



BEEF & VEAL MARKET SITUATION



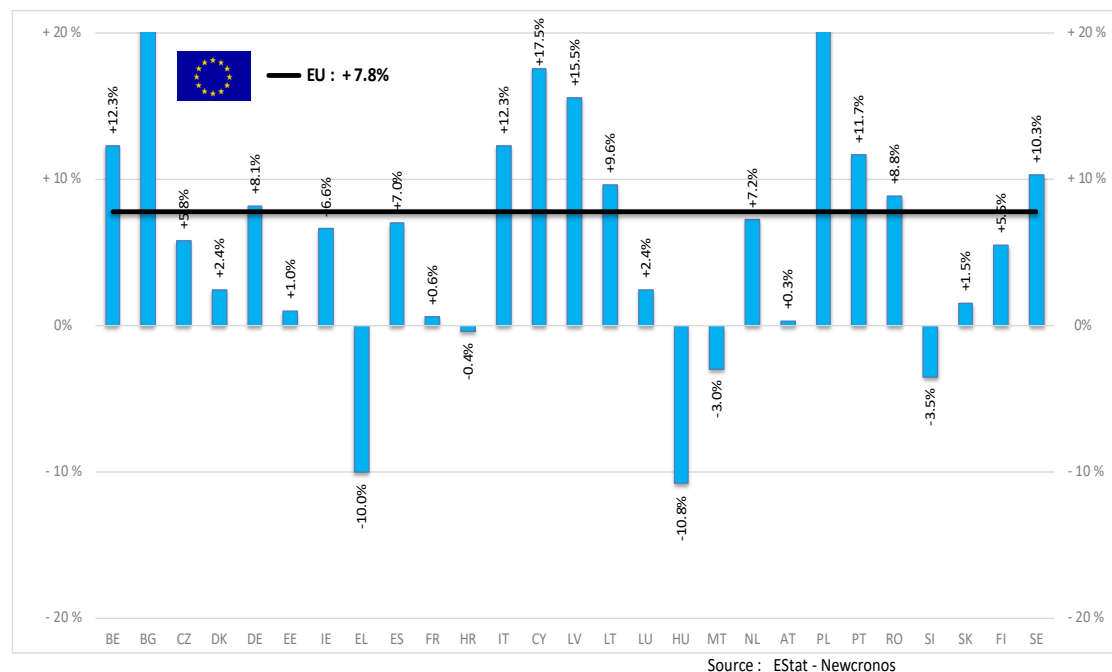
GREX 23 May 2024

PRODUCTION

% EVOLUTION HEADS

HEADS	Jan-Feb 24/23
	EU
Bull	+10.1%
Bullock	+8.2%
Cow	+8.4%
Heifer	+11.3%
Calve	+5.7%
Young cattle	-6.0%
Meat of bovine animals	+7.8%

Estimates for last month of period :

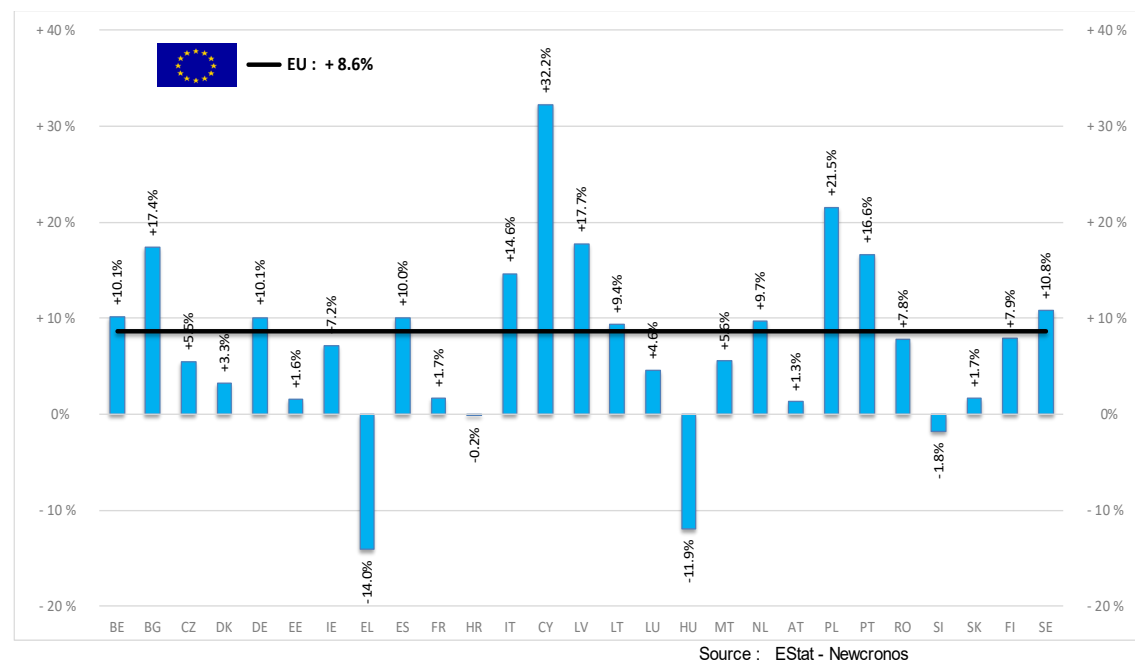


PRODUCTION

% EVOLUTION TONNES

TONNES	Jan-Feb 24/23
	EU
Bull	+9.7%
Bullock	+7.7%
Cow	+8.7%
Heifer	+11.6%
Calve	+7.9%
Young cattle	-5.1%
Meat of bovine animals	+8.6%

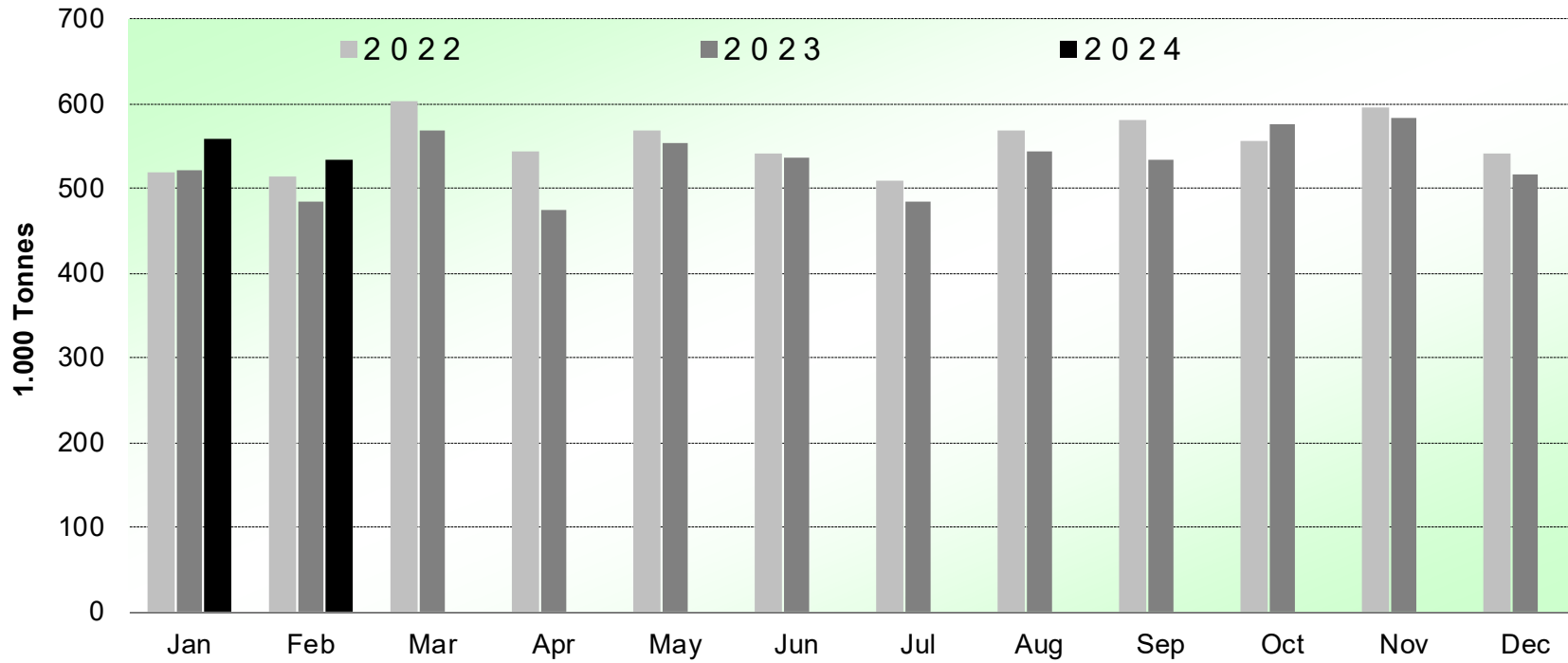
Estimates for last month of period :



PRODUCTION

HISTORIC TONNES

Beef & Veal Production (EU Slaughtering) - Tonnes



Source : EStat-Newcronos

PRICES CARCASSES

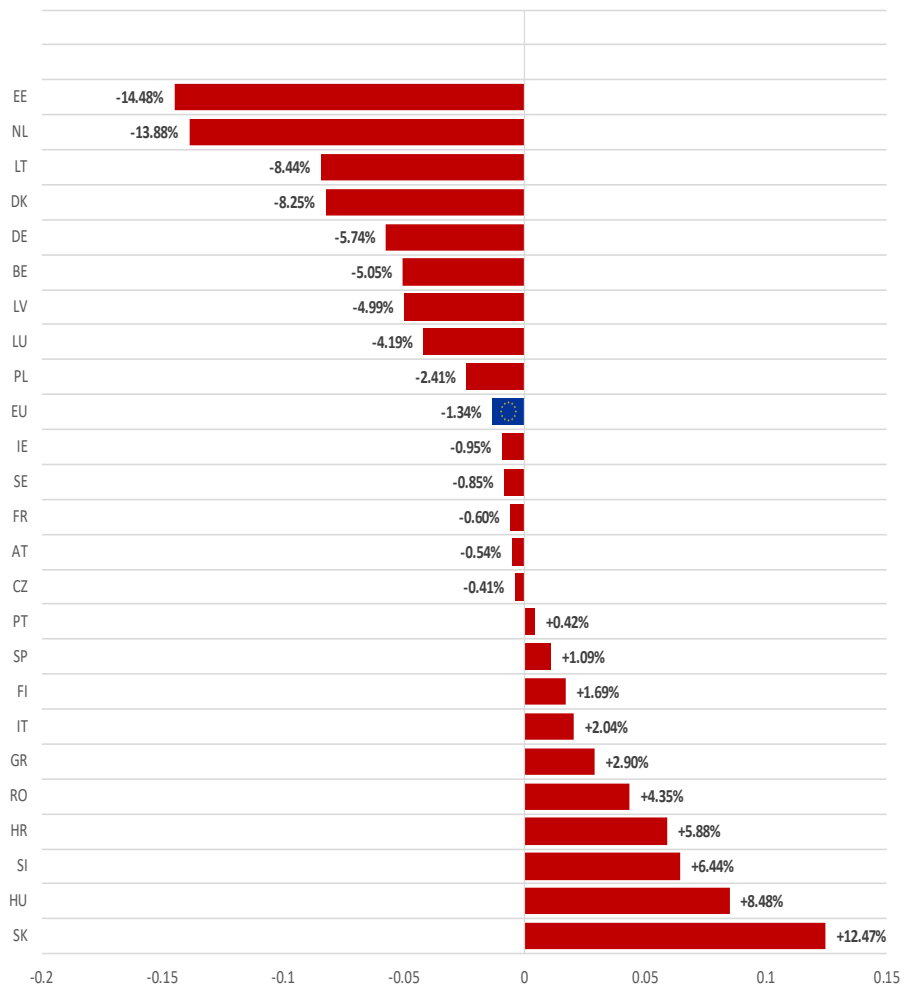
Dashboard

EU Prices week		19	Evolution since last week	Evolution since last month	Evolution since last year
Carcasse	Average A/C/Z-R3	502.8	- 0.4%	- 0.6%	- 0.8%
	Young Bovines (Z)	507.8	+ 0.4%	+ 0.8%	- 1.4%
	Young Bulls (A)	496.3	- 0.7%	- 1.2%	- 0.5%
	Steers (C)	531.7	- 0.1%	+ 0.2%	- 1.6%
	Cows (D)	420.2	+ 0.4%	+ 2.2%	- 3.1%
	Heifers (E)	513.2	+ 0.2%	+ 0.5%	- 1.3%
	Calves slaughtered <8M	613.1	+ 0.2%	- 1.0%	- 3.2%
Live Animals	Male Calves Dairy Type	134.6	+ 4.2%	+ 15.4%	- 1.5%
	Male Calves Beef Type	264.7	+ 1.4%	+ 5.0%	- 0.2%
	Young Store Cattle	3.45	+ 0.4%	- 0.2%	+ 3.5%
	Yearling Male Store Cattle	3.97	+ 1.1%	+ 3.5%	+ 5.6%
	Yearling Female Store Cattle	3.03	+ 0.5%	+ 0.7%	+ 2.7%

Sources : MSs notifications (Regulation (EU) 1182/2017 and 1184/2017)

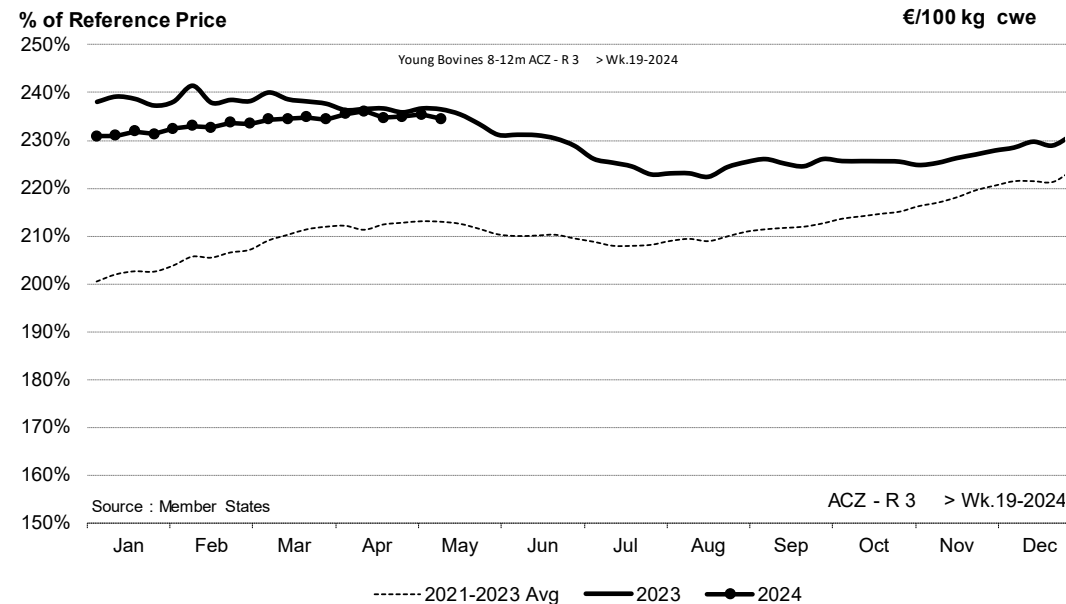
PRICES CARCASSES

EU ACZ R3 Price Comparison between average monthly price May 2023 - April 2024 compared to May 2022 - April 2023



EU EVOLUTION A/C/Z.R3

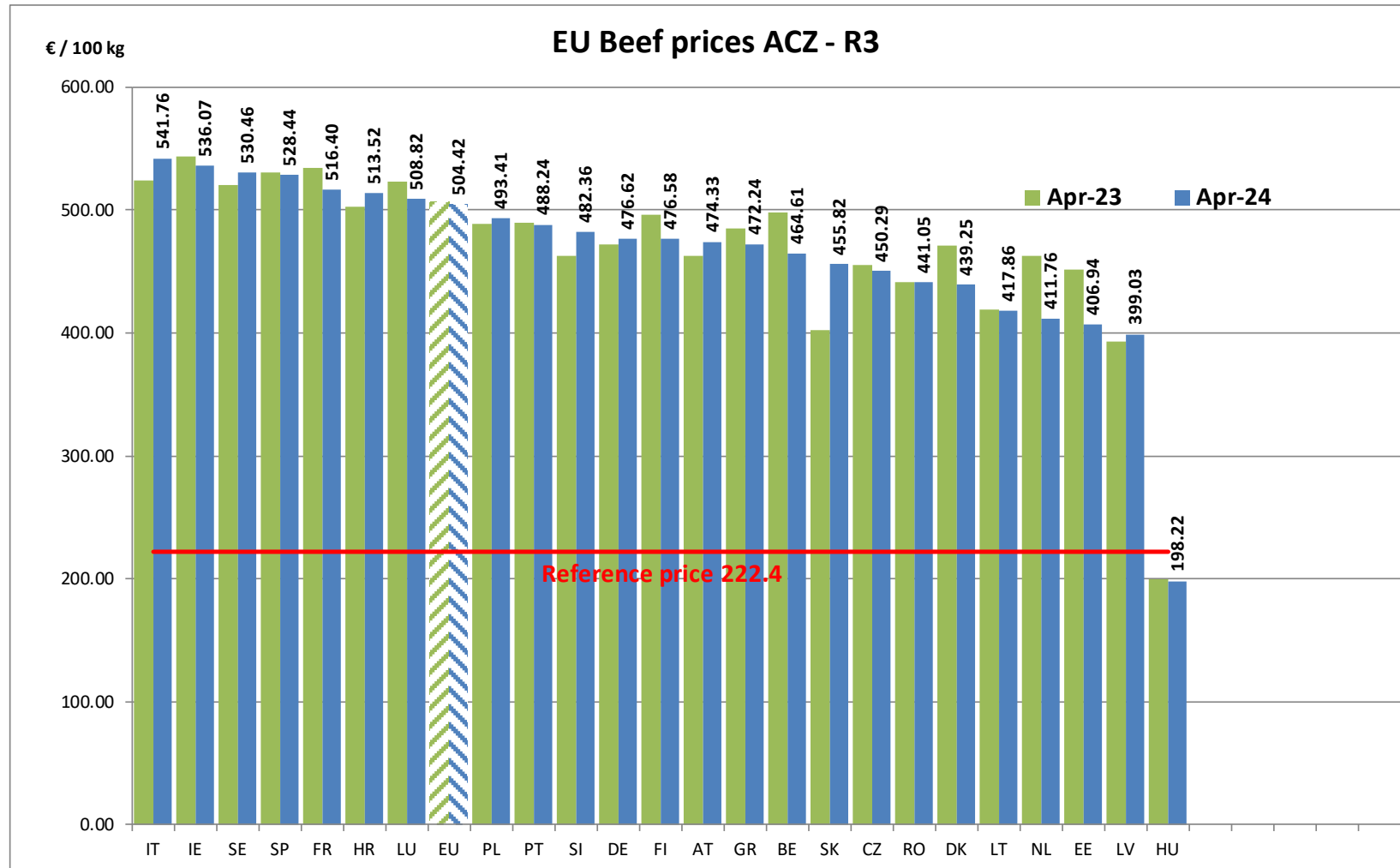
ACZ - R 3 > Wk.19-2024



Price in week 19 :	502.80	Average price in April 2024 :	504.47
% change y/y :	- 0.83%	% change y/y :	- 0.48%
% Ref. Price in wk 0 :	228.0%		

PRICES CARCASSES

EU EVOLUTION A/C/Z.R3

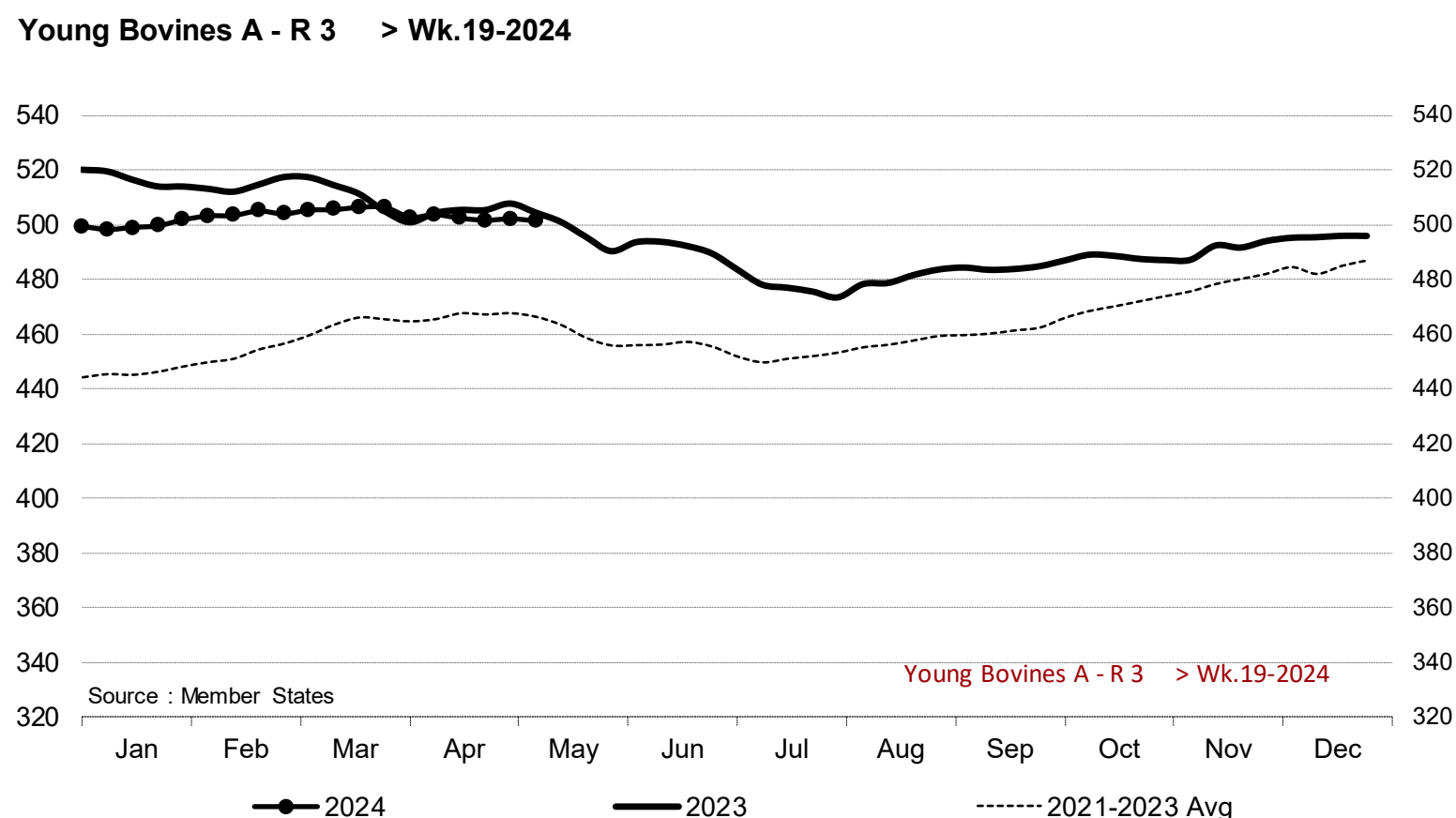


23 May 2024

PRICES CARCASSES

EU EVOLUTION YOUNG BULL – A.R3

Young Bovines A - R 3 > Wk.19-2024



Source : Member States

Young Bovines A - R 3 > Wk.19-2024

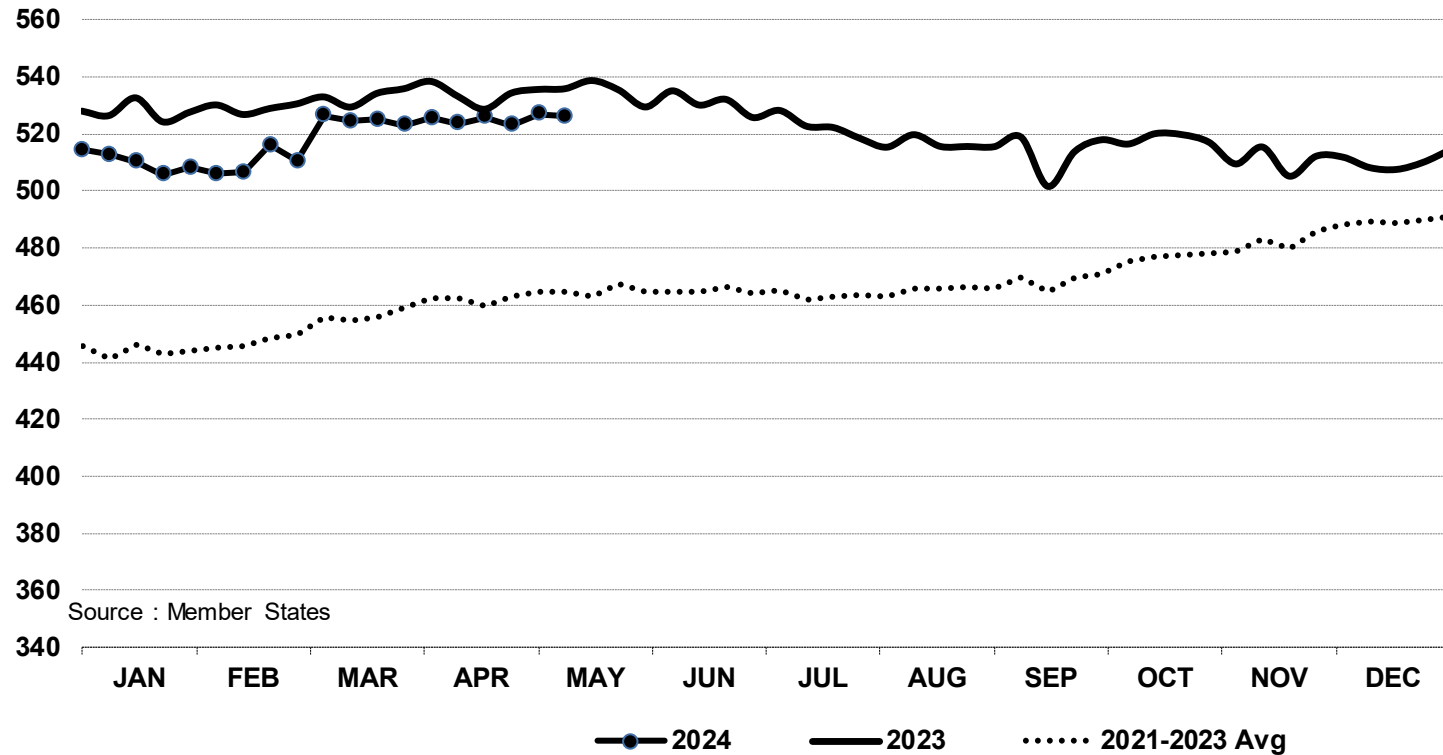
Price in week 19 :	501.39	Average price in April 2024 :	502.64
% change y/y :	- 0.6%	% change y/y :	- 0.3%

PRICES CARCASSES

E.U. EVOLUTION YOUNG BOVINE 8-12M- Z.R3

In € / 100 kg

Young Bovines 8-12m Z - R 3 > Wk.19-2024



Price in week 19 : **526.31** 11/04/2024

% change y/y : **- 1.8%**

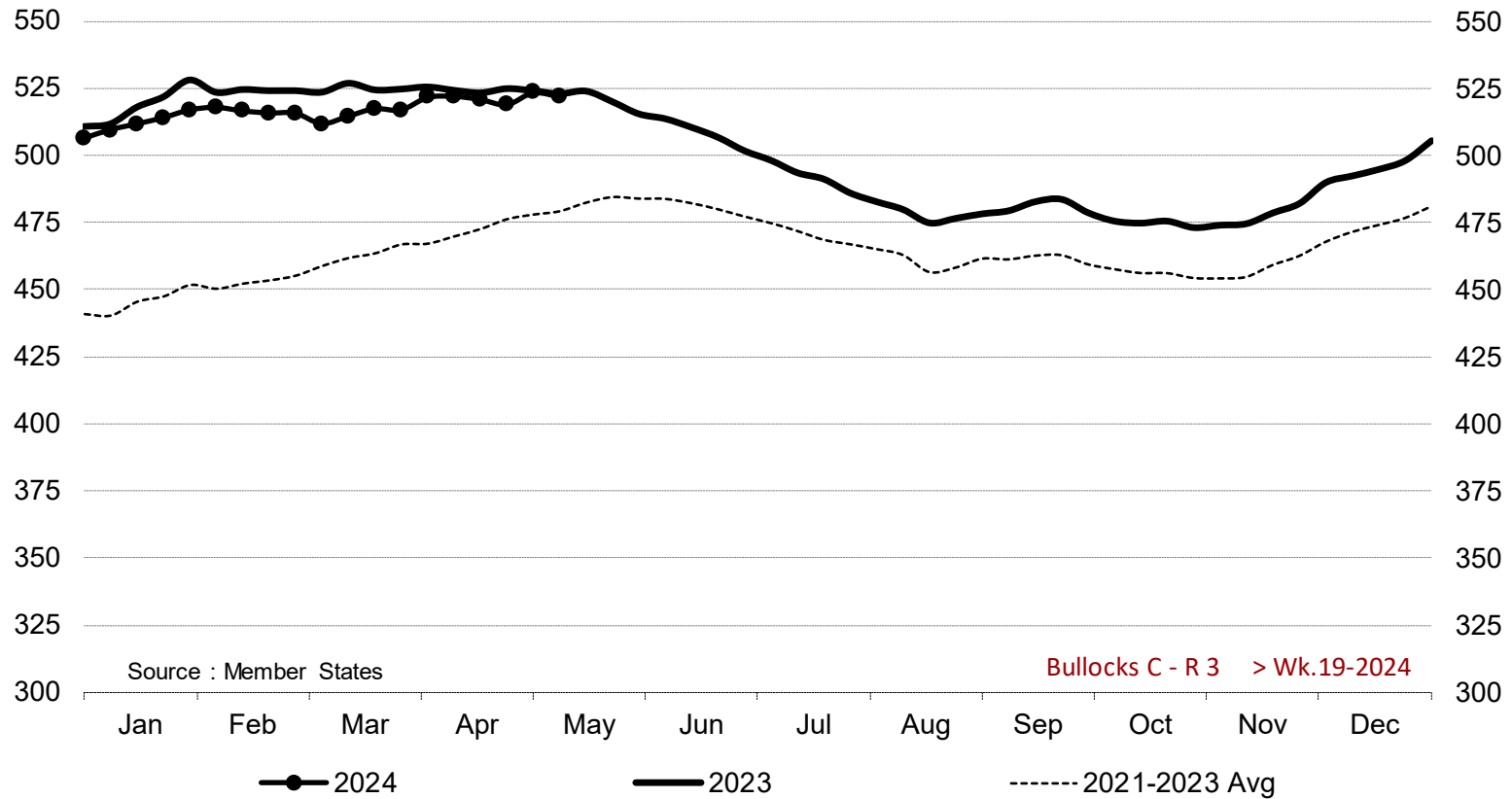
Average price in April 2024 : **524.75**

% change y/y : **- 1.7%**

PRICES CARCASSES

E.U. EVOLUTION STEER – C.R3

Bullocks C - R 3 > Wk.19-2024



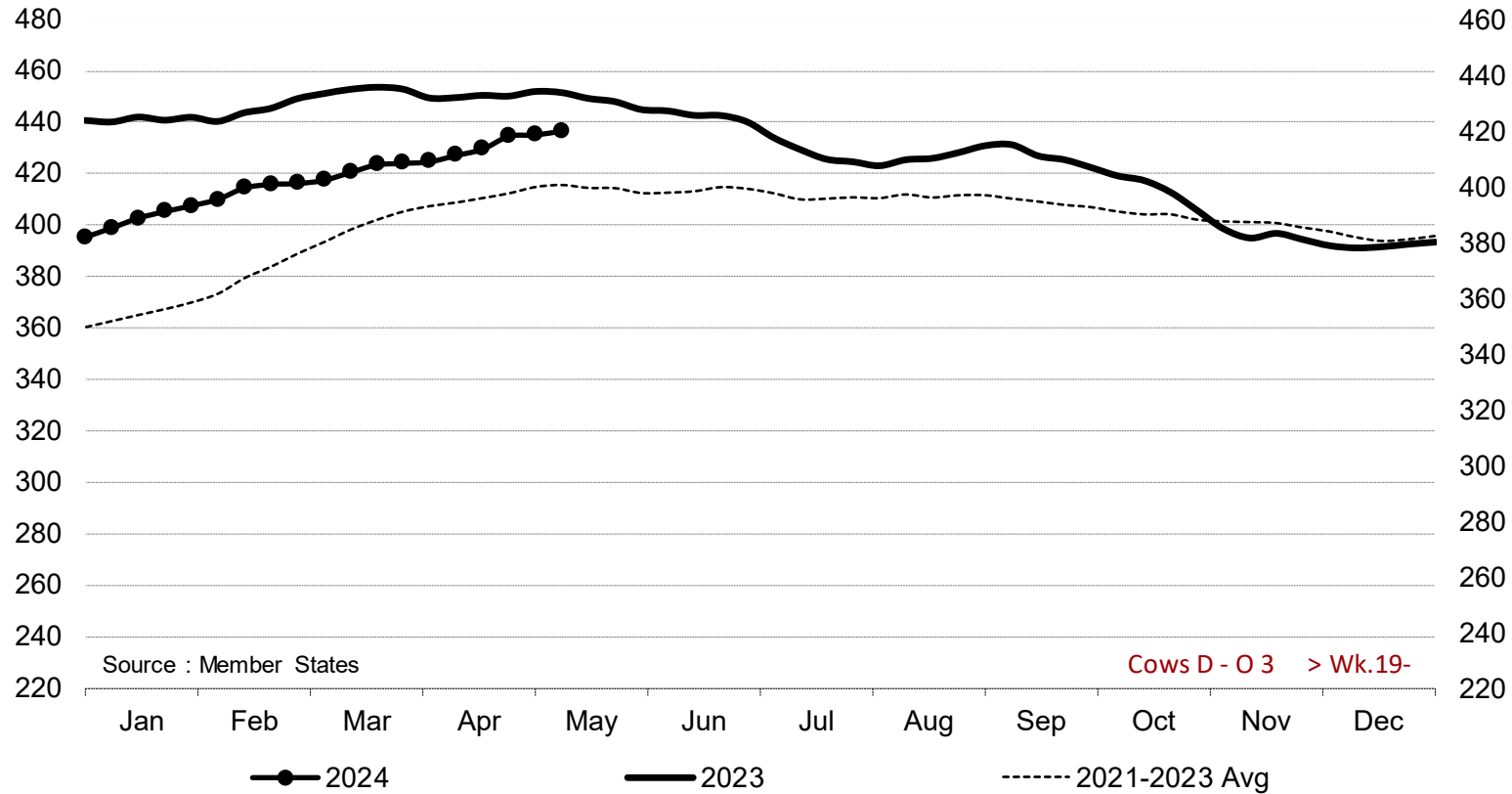
Price in week 19 : **521.96**
% change y/y : **- 0.2%**

Average price in April 2024 : **521.13**
% change y/y : **- 0.6%**

PRICES CARCASSES

E.U. EVOLUTION
COW – D.03

Cows D - O 3 > Wk.19-2024



Source : Member States

Cows D - O 3 > Wk.19-

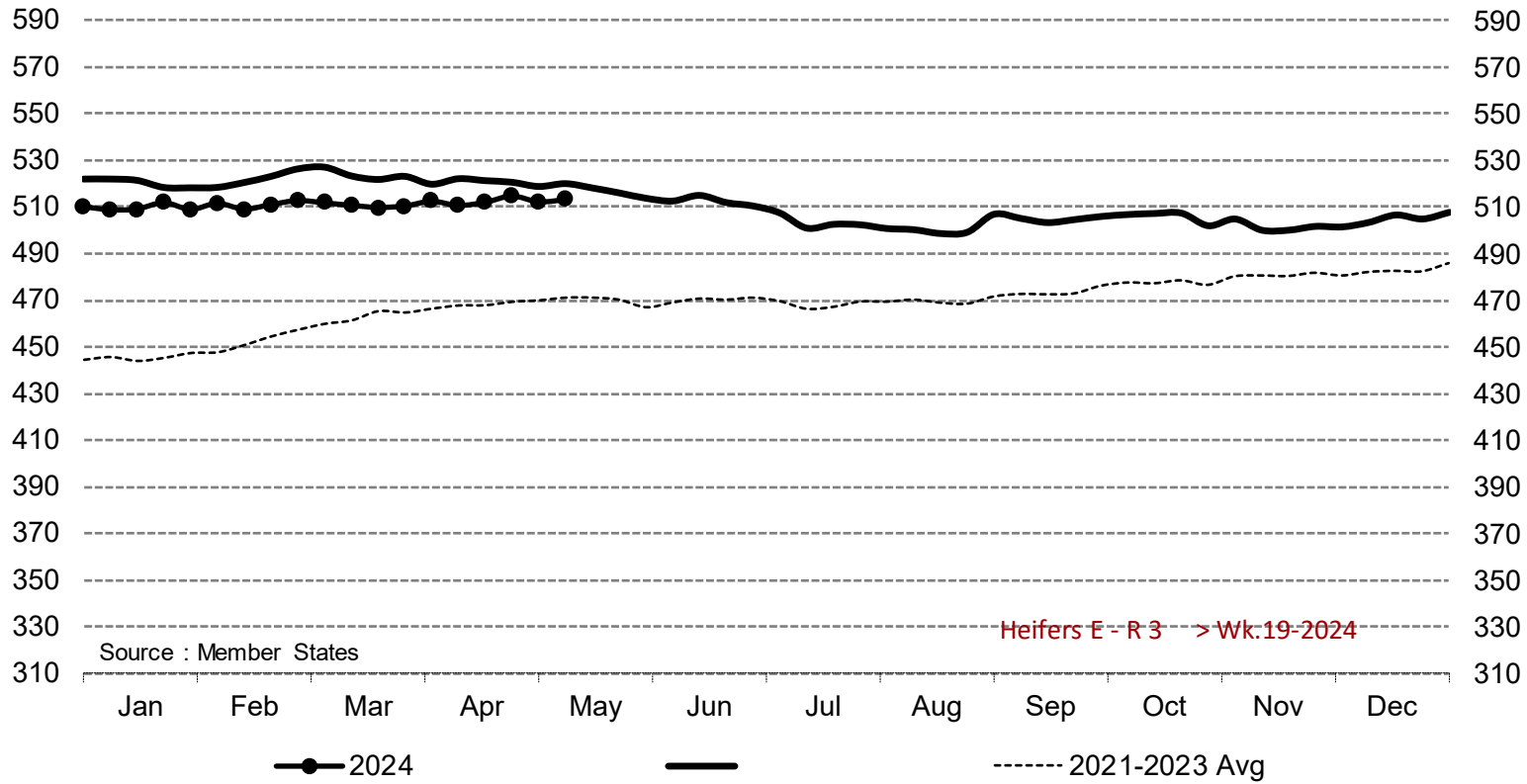
Price in week 19 : **420.21**
% change y/y : **- 3.1%**

Average price in April 2024 : **413.46**
% change y/y : **- 4.4%**

PRICES CARCASSES

EU EVOLUTION HEIFER - E.R3

Heifers E - R 3 > Wk.19-2024

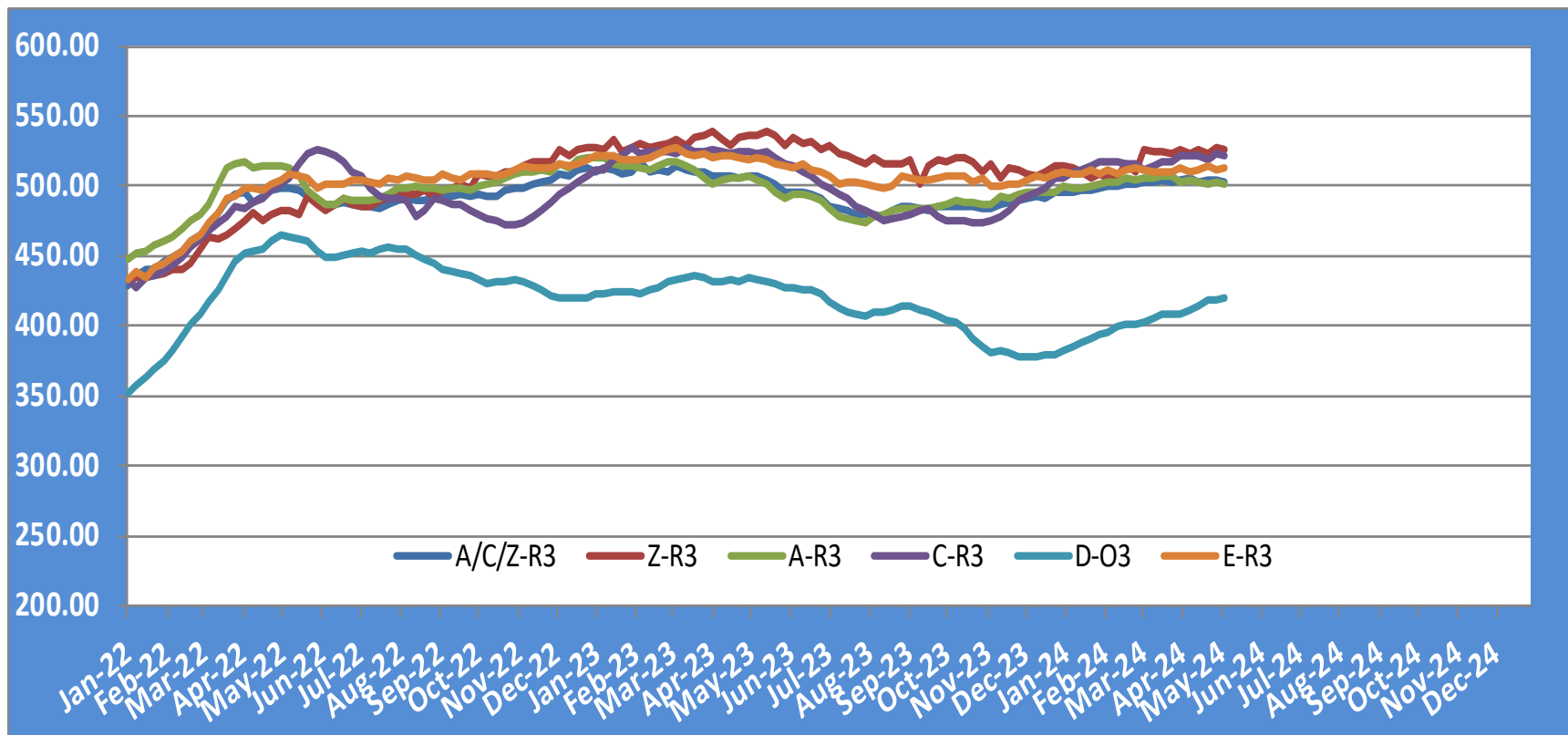


Price in week 19 : **513.25**
% change y/y : **- 1.3%**

Average price in April 2024 : **512.42**
% change y/y : **- 1.7%**

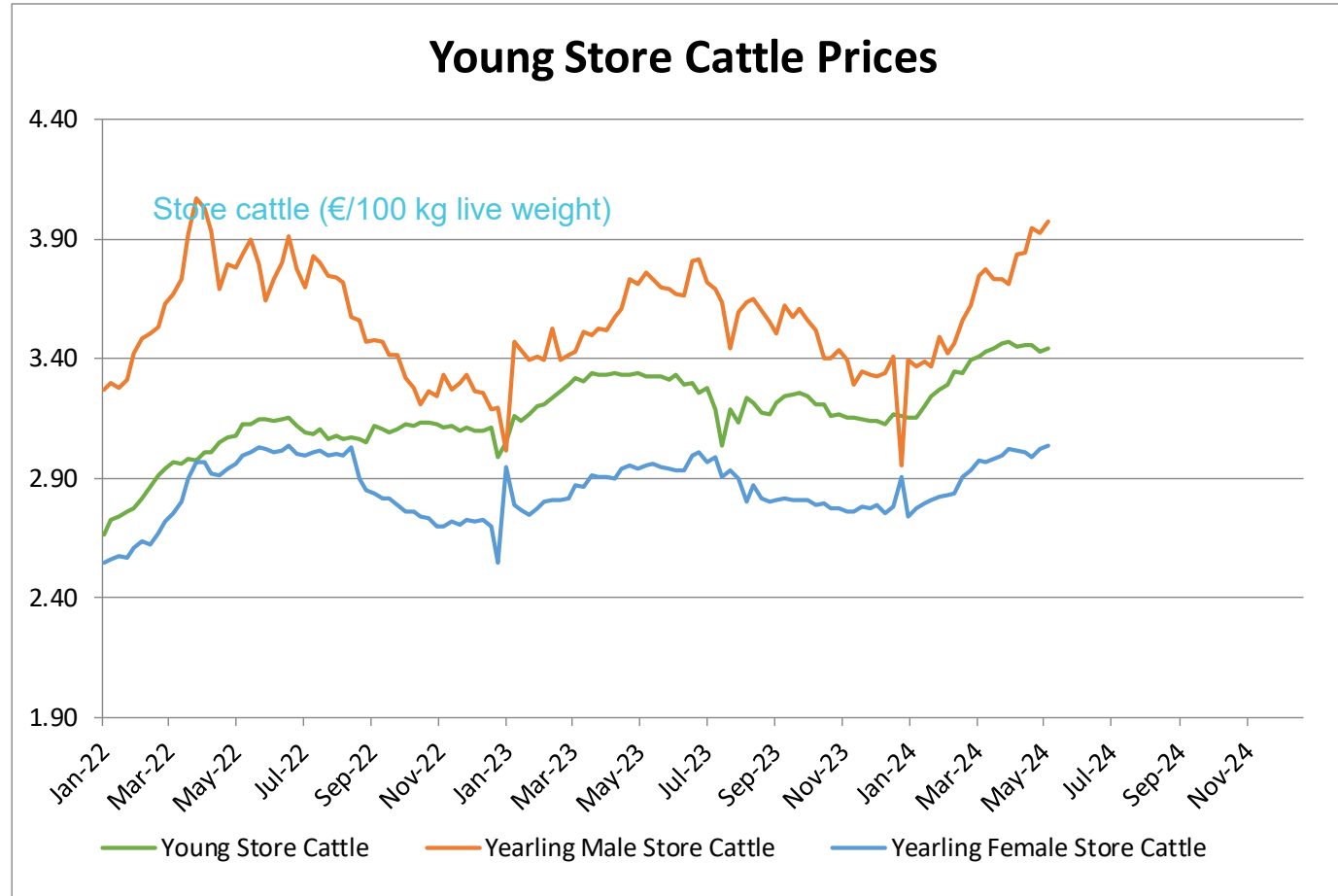
PRICES CARCASSES

EU EVOLUTION ALL CAT GLOBAL VIEW



PRICES LIVE BOVINES

EU EVOLUTION STORE CATTLE



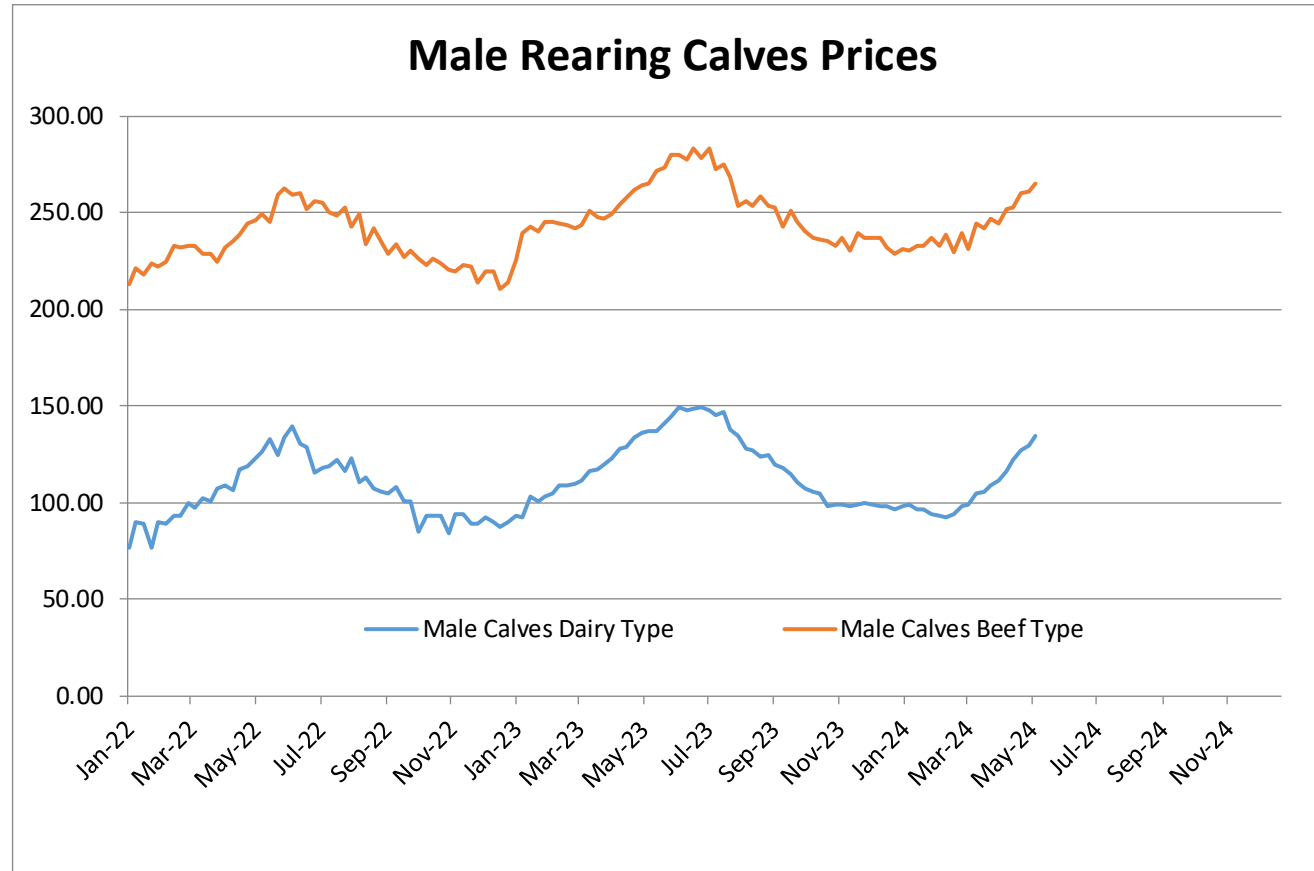
Young Store Cattle Price in	Week 19	3.45	Yearling Male Store Cattle Price	3.97
	Change y/y	+3.5%	Change y/y	+5.6%
Yearling Female Store Cattle Price		3.03		
	Change y/y	+2.7%		

23 May 2024

PRICES LIVE BOVINES

EU EVOLUTION Male Calves – 8D4W

Male calves aged between 8 days and 4 weeks (€/head)



Male Rearing Calves Beef type

Price in Week 19 **264.75**
Change y/y -0.2%

Male Rearing Calves Dairy type

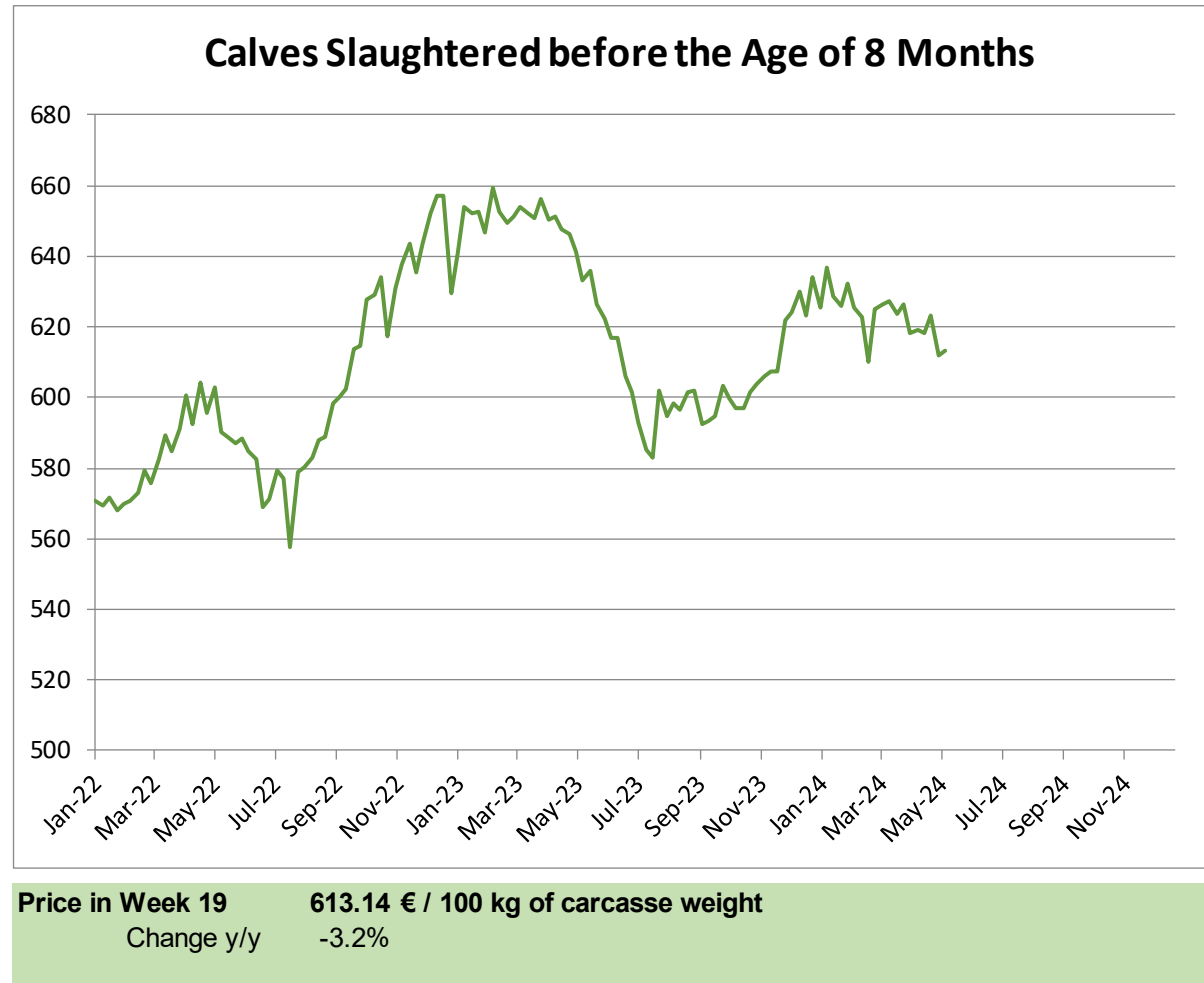
Price in Week 19 **134.68**
Change y/y -1.5%

23 May 2024

PRICES LIVE BOVINES

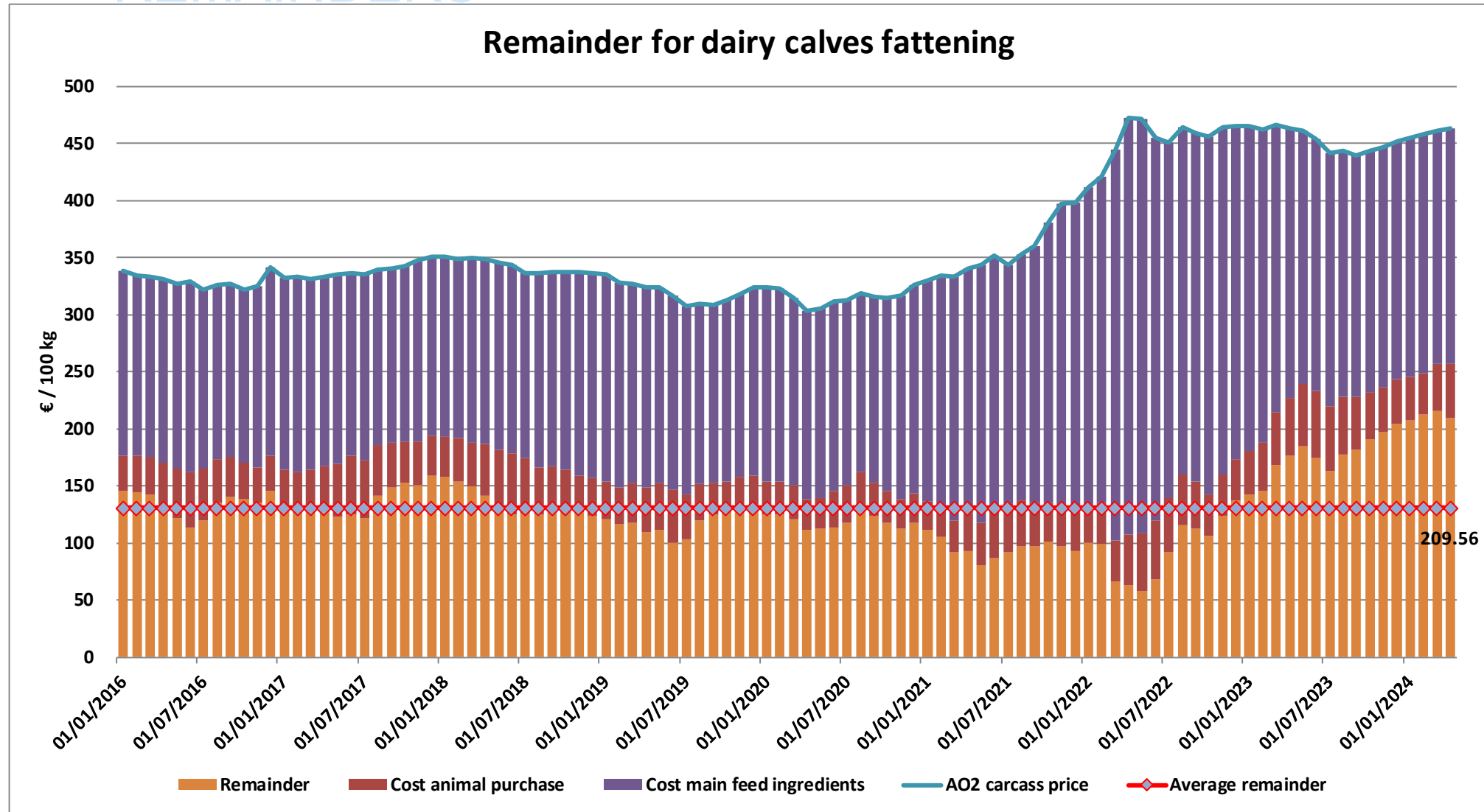
EU EVOLUTION Butcher Calves

Calves slaughtered before the age of less than 8 months
(€/100 kg cw)

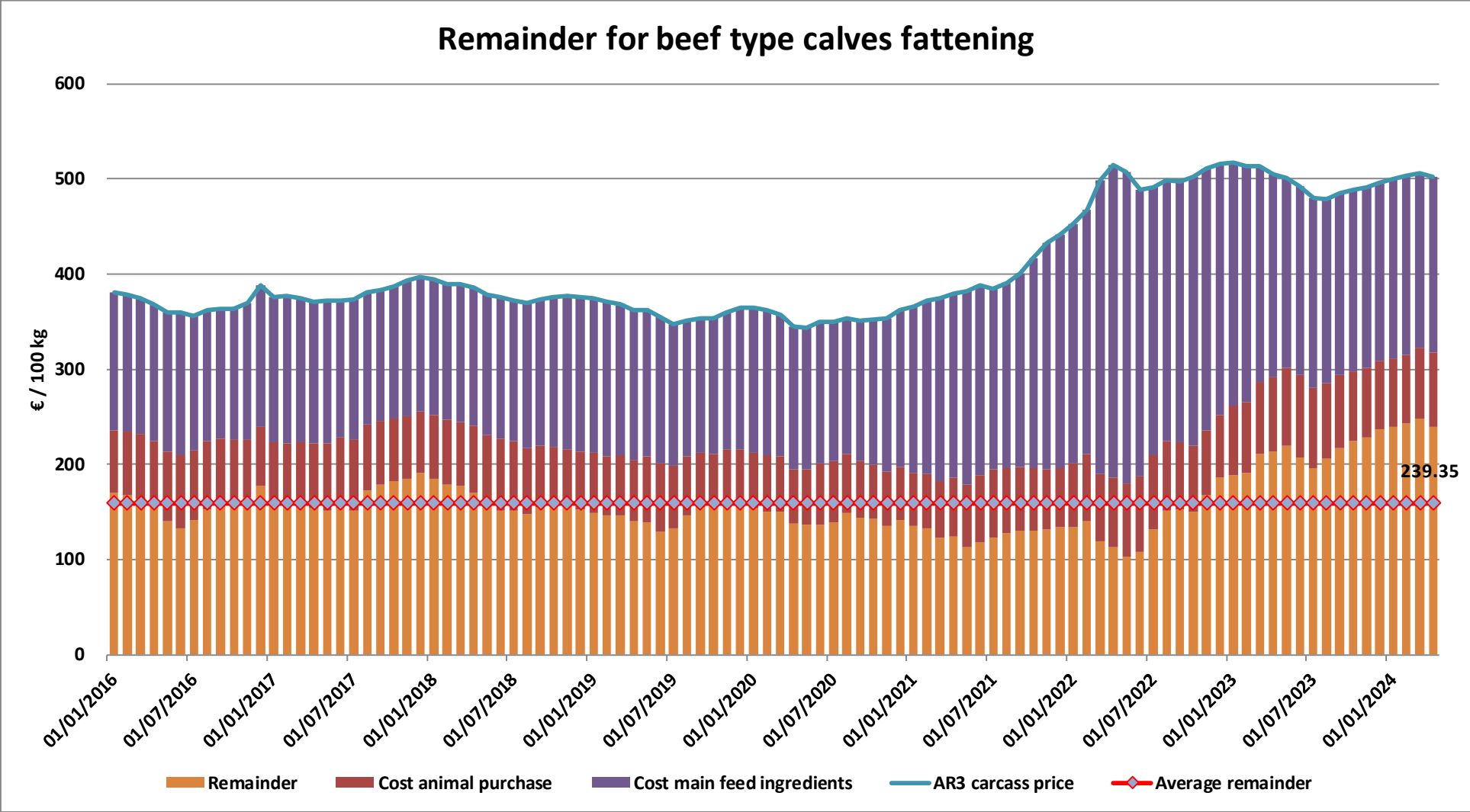


23 May 2024

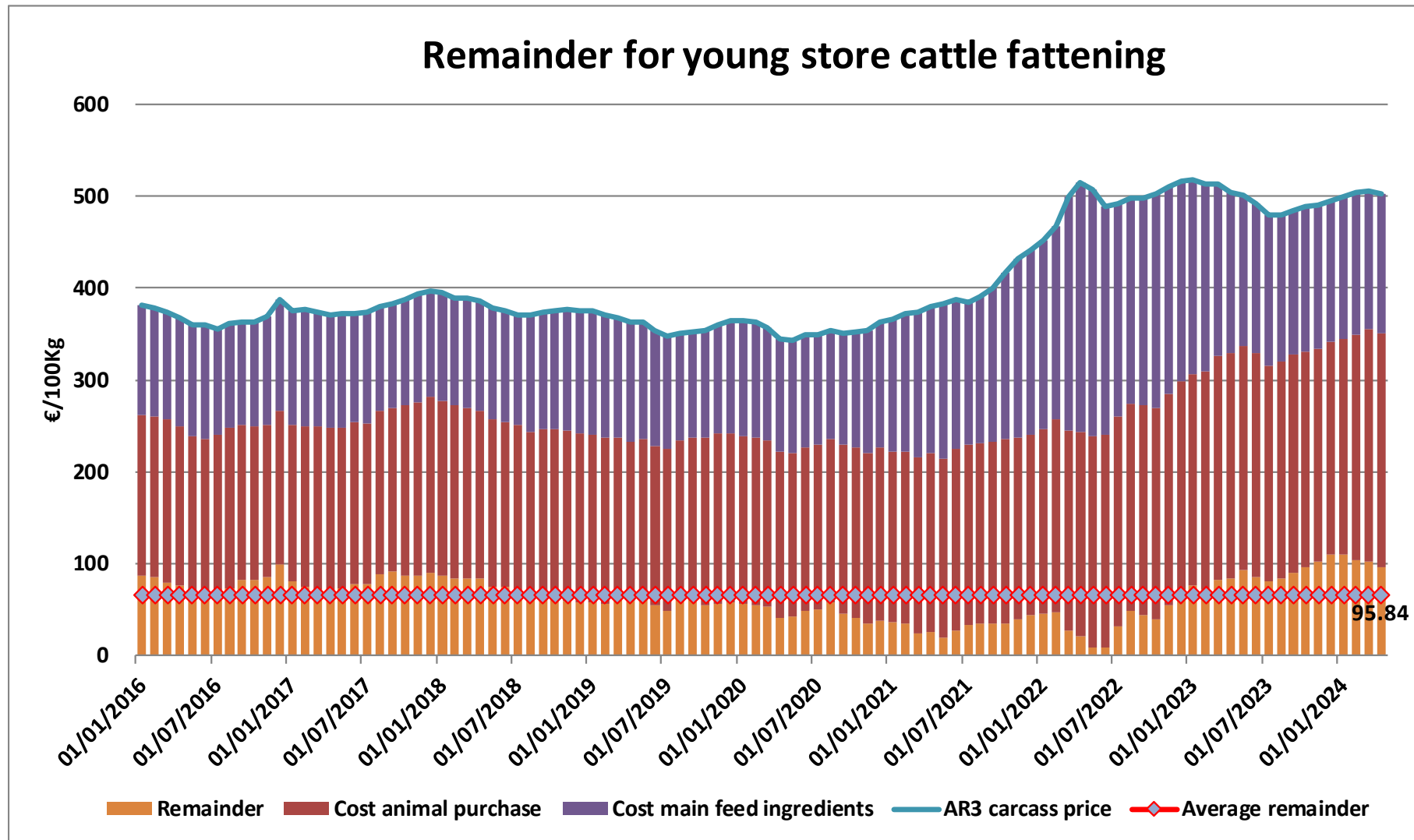
REMAINDERS



REMAINDERS



REMAINDERS



TRADE

EU EXPORTS

Beef & Live Animals

EU Exports of Beef and Live Animals (excluding fats): Trade figures (COMEXT – tonnes cwe)

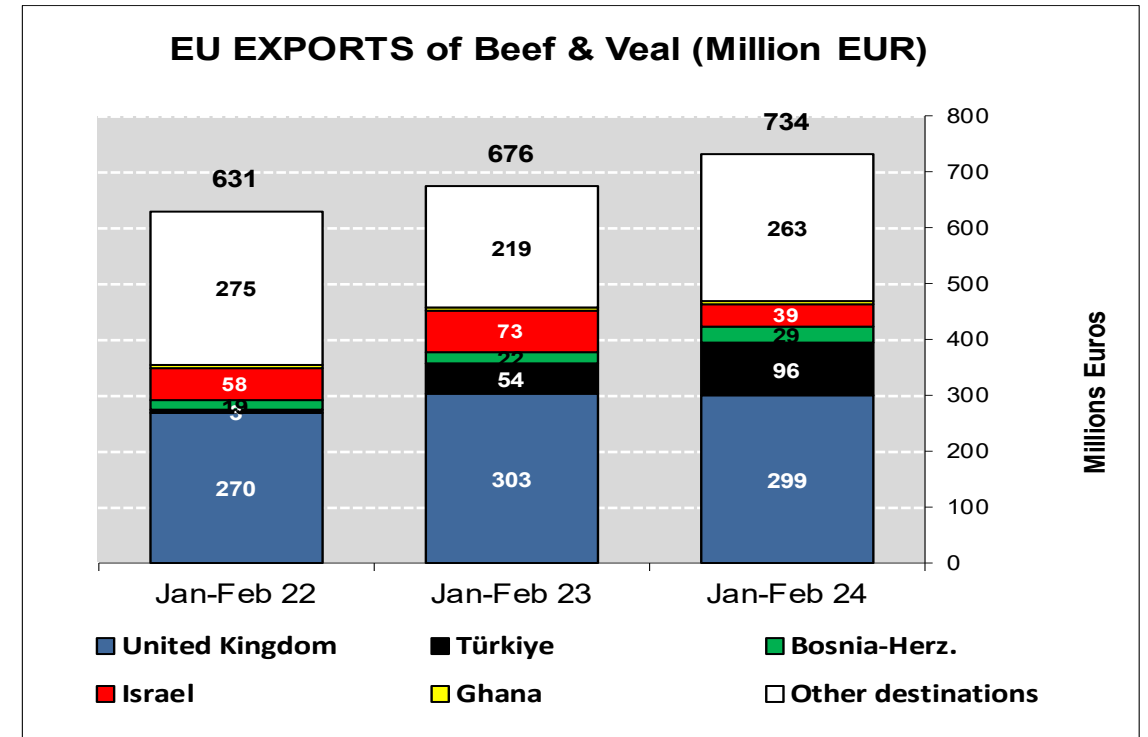
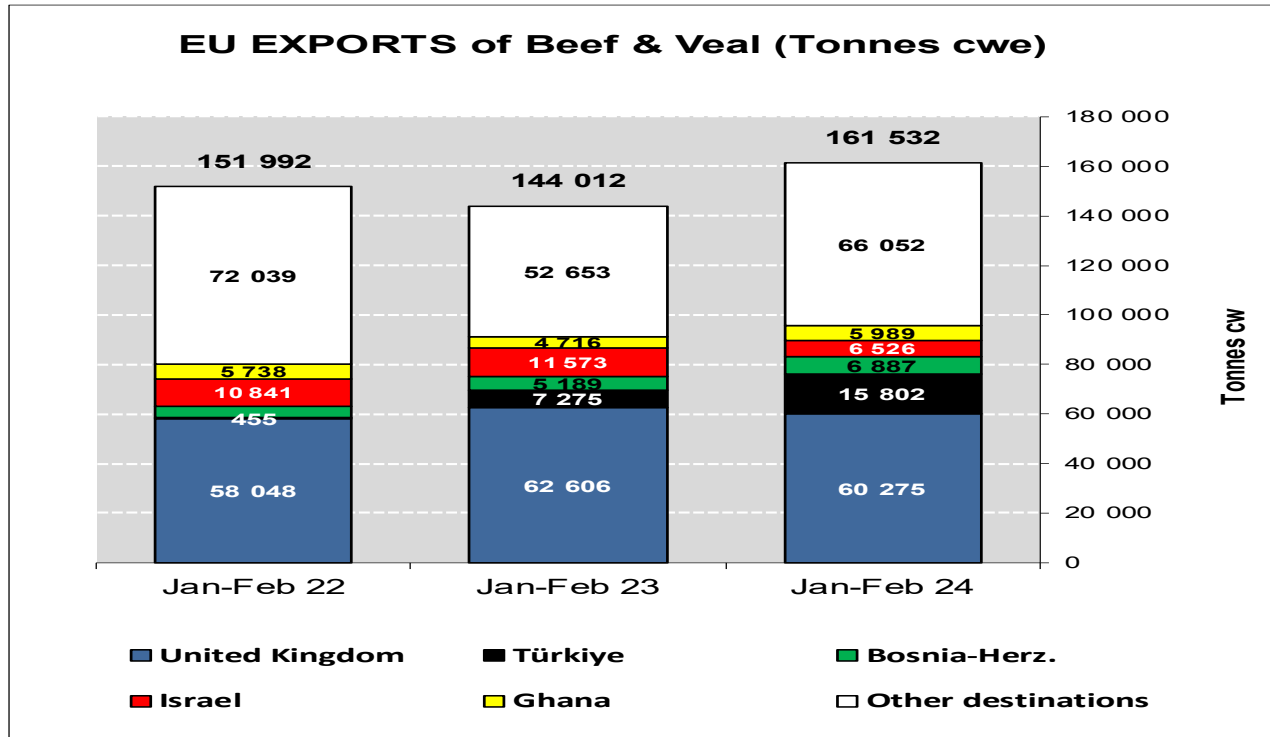
Destinations	2020		2021		2022		2023		Jan-Feb 24		Compared to Jan-Feb 23
	tonnes	%	tonnes	%	tonnes	%	tonnes	%	tonnes	%	
United Kingdom	450 514	39.5%	344 633	33.4%	366 332	38.9%	363 711	38.1%	60 275	37.3%	- 3.7%
Türkiye	22 338	2.0%	14 953	1.5%	14 168	1.5%	90 187	9.5%	15 802	9.8%	+ 117.2%
Bosnia-Herz.	34 896	3.1%	40 504	3.9%	38 796	4.1%	45 196	4.7%	6 887	4.3%	+ 32.7%
Israel	56 139	4.9%	66 022	6.4%	63 618	6.7%	45 069	4.7%	6 526	4.0%	- 43.6%
Ghana	47 344	4.2%	47 618	4.6%	32 171	3.4%	33 786	3.5%	5 989	3.7%	+ 27.0%
Lebanon	33 709	3.0%	19 527	1.9%	21 026	2.2%	21 402	2.2%	4 912	3.0%	+++
Ivory Coast	32 433	2.8%	29 187	2.8%	29 882	3.2%	30 141	3.2%	4 834	3.0%	- 4.3%
Kosovo	10 391	0.9%	16 478	1.6%	17 069	1.8%	22 677	2.4%	4 084	2.5%	+ 67.4%
Hong Kong	56 713	5.0%	44 769	4.3%	10 570	1.1%	21 614	2.3%	4 072	2.5%	+ 12.7%
Philippines	33 650	3.0%	34 671	3.4%	29 922	3.2%	18 605	2.0%	3 587	2.2%	+ 89.0%
Switzerland	26 223	2.3%	28 717	2.8%	24 958	2.6%	19 359	2.0%	2 841	1.8%	- 26.0%
Canada	20 450	1.8%	20 670	2.0%	19 928	2.1%	15 985	1.7%	2 604	1.6%	+ 19.3%
Chile	8 664	0.8%	9 915	1.0%	9 159	1.0%	10 195	1.1%	2 443	1.5%	+ 111.2%
Algeria	39 396	3.5%	24 111	2.3%	25 459	2.7%	11 124	1.2%	2 378	1.5%	- 23.1%
Morocco	10 049	0.9%	11 868	1.2%	8 273	0.9%	25 635	2.7%	2 372	1.5%	+ 23.7%
Angola	1 918	0.2%	7 600	0.7%	8 070	0.9%	8 390	0.9%	2 254	1.4%	+ 90.0%
<i>Other Destinations</i>	<i>254 624</i>	<i>22.3%</i>	<i>269 734</i>	<i>26.2%</i>	<i>223 095</i>	<i>23.7%</i>	<i>170 655</i>	<i>17.9%</i>	<i>29 672</i>	<i>18.4%</i>	
Total	1 139 450		1 030 978		942 496		953 730		161 532		
% change			- 10%		- 9%		+ 1%		+ 12.2%		

TRADE

EU Exports of Beef and Live Animals:
(Excl Fats) Trade figures (COMEXT)

EU EXPORTS

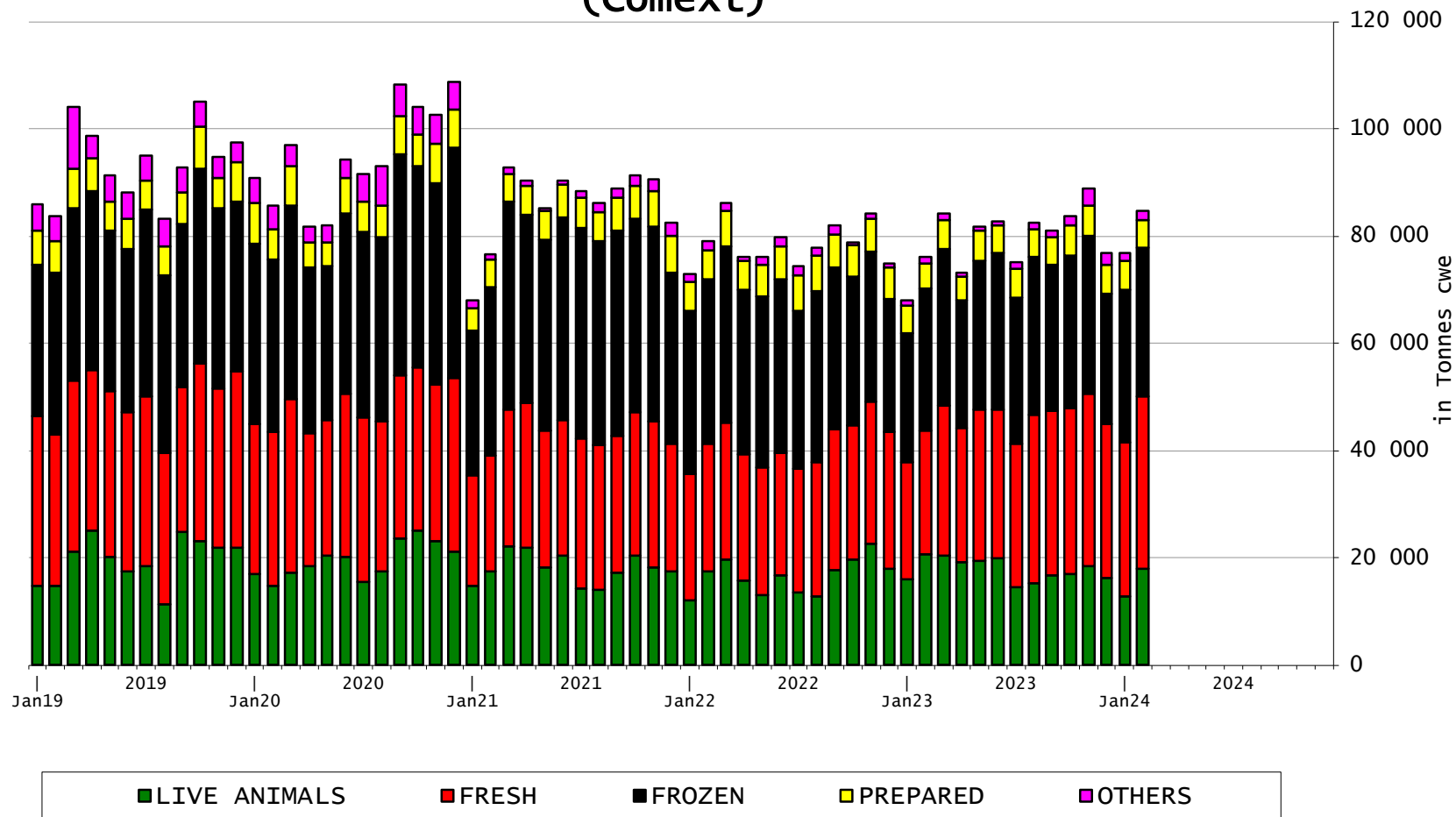
Beef & Live Animals (Excl Fats)



TRADE

EU EXPORTS Beef Products

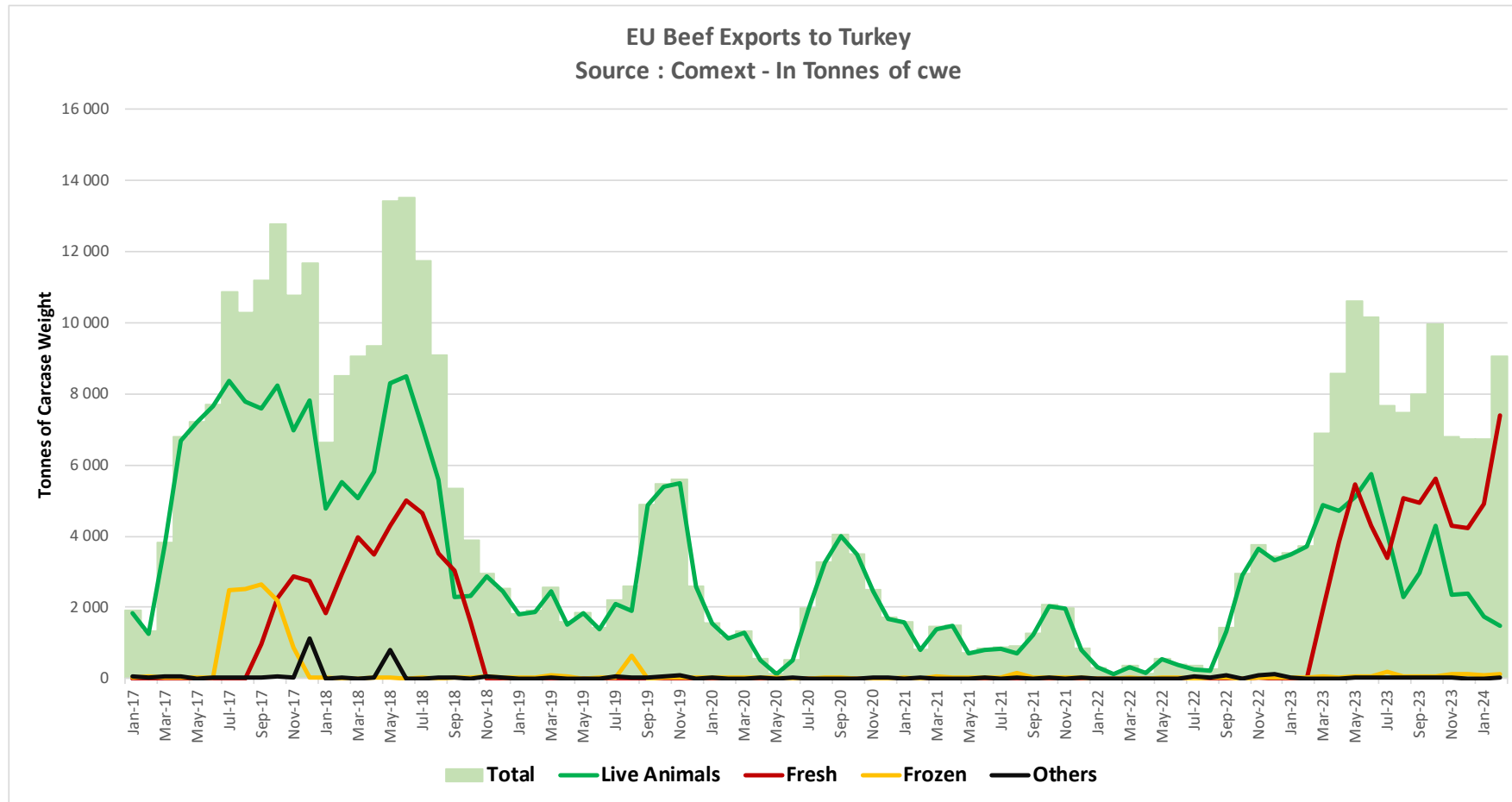
EU Exports of BEEF products (Comext)



TRADE

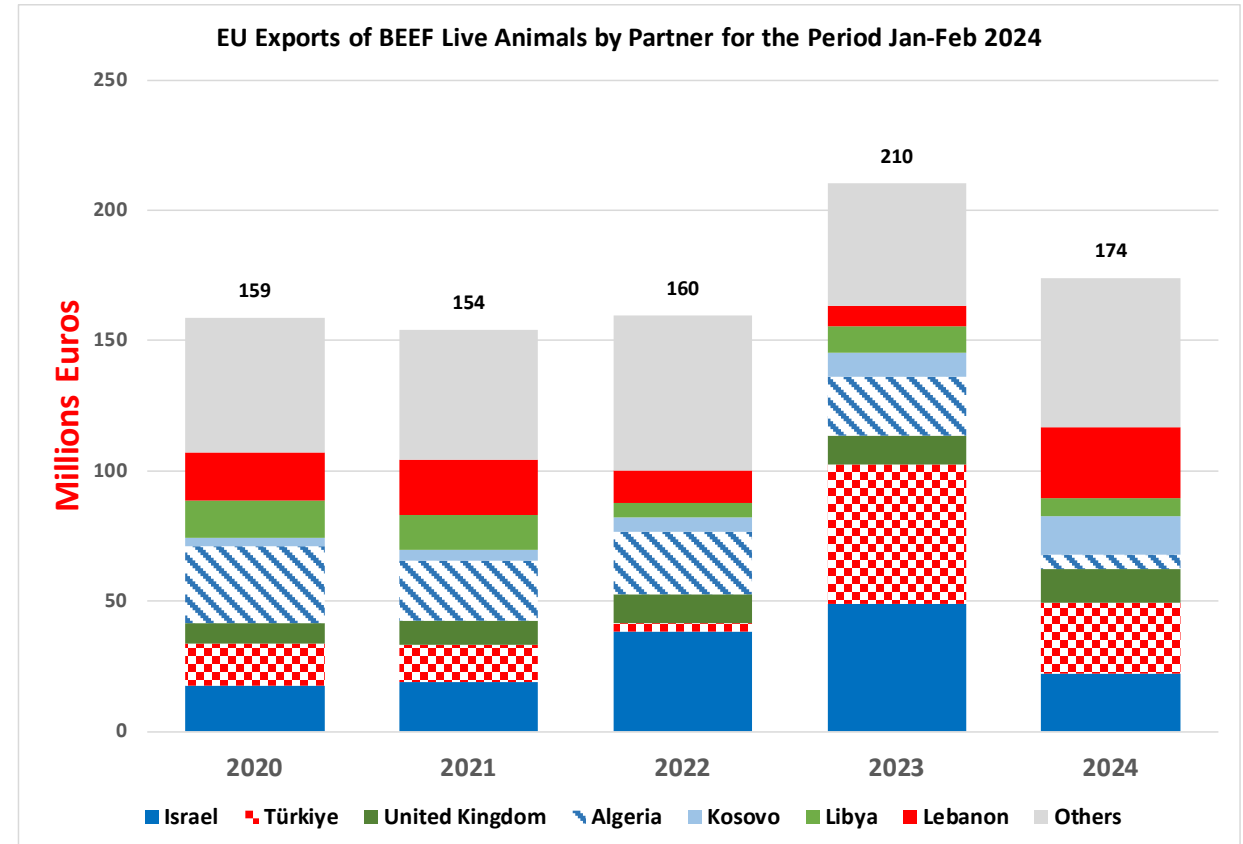
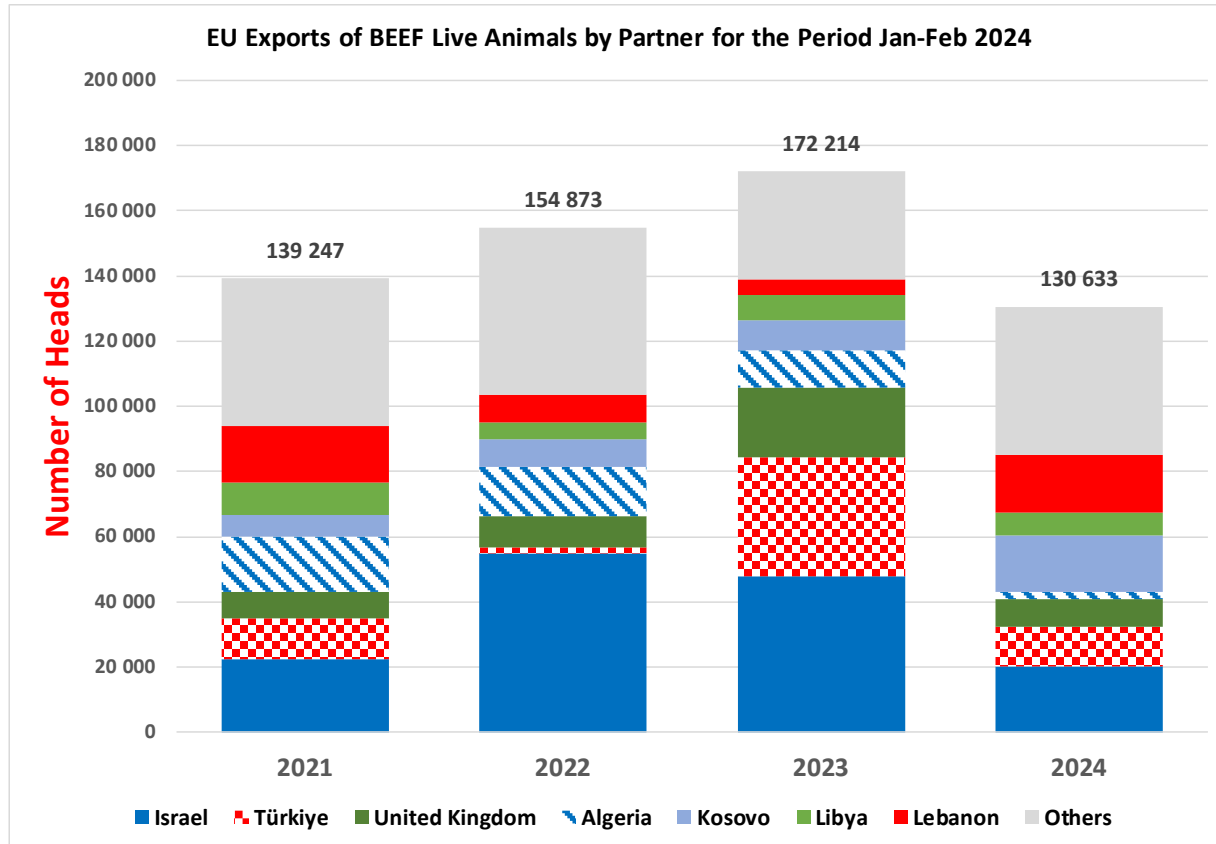
EU EXPORTS Beef to TURKEY

EU Beef Exports to TURKEY
Trade figures (COMEXT data) *tonnes cwe*



TRADE

EU EXPORTS Live Animals



TRADE

EU IMPORTS Beef & Live Animals

EU Imports of Beef and Live Animals (Excl Fats): Trade Figures (COMEXT – tonnes cwe)

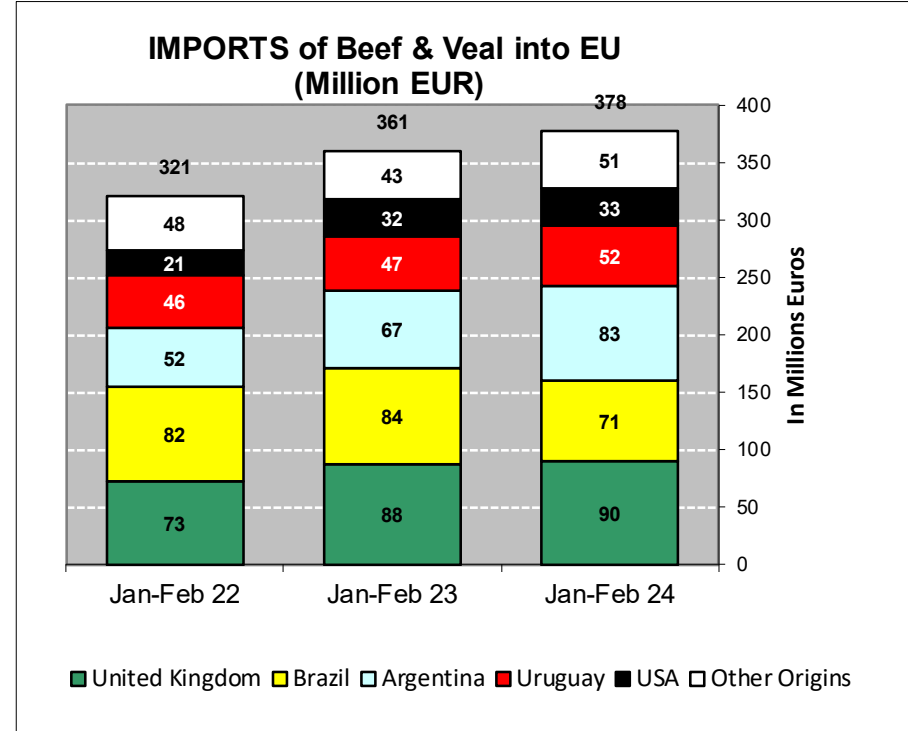
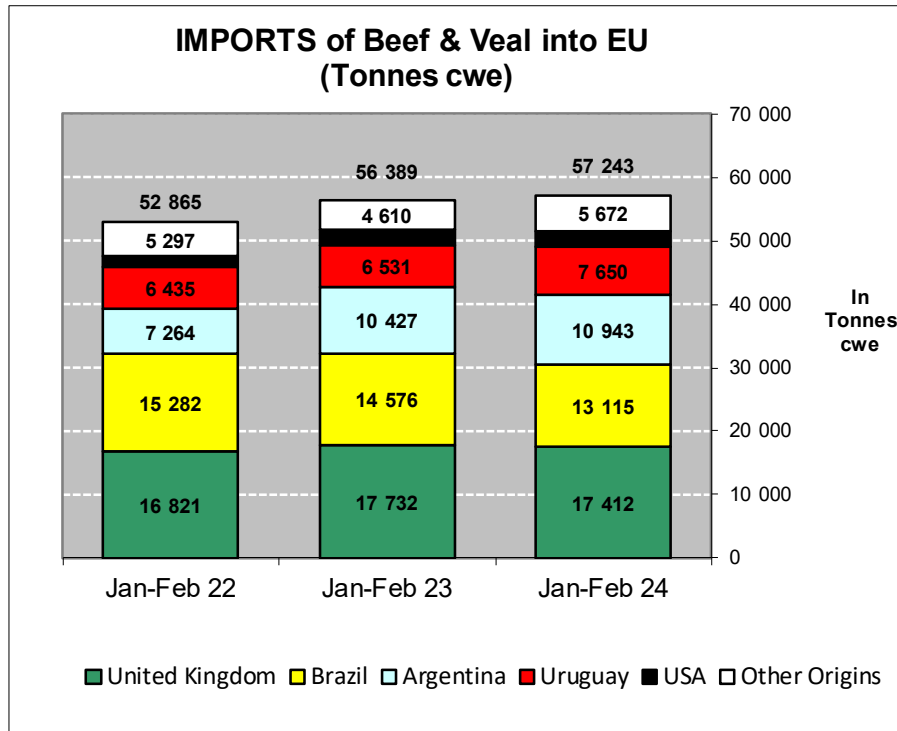
Origins	2020		2021		2022		2023		Jan-Feb 24		Compared to Jan-Feb 23
	tonnes	%	tonnes	%	tonnes	%	tonnes	%	tonnes	%	
United Kingdom	120 743	35.1%	87 596	28.3%	118 767	33.0%	106 915	30.5%	17 412	30.4%	- 1.8%
Brazil	84 139	24.4%	81 737	26.4%	86 512	24.0%	86 800	24.7%	13 115	22.9%	- 10.0%
Argentina	56 421	16.4%	52 300	16.9%	62 584	17.4%	63 064	18.0%	10 943	19.1%	+ 4.9%
Uruguay	34 611	10.0%	42 669	13.8%	37 619	10.5%	41 565	11.8%	7 650	13.4%	+ 17.1%
USA	16 532	4.8%	14 910	4.8%	17 269	4.8%	18 281	5.2%	2 451	4.3%	- 2.4%
Australia	11 058	3.2%	8 925	2.9%	8 385	2.3%	7 727	2.2%	1 173	2.0%	+ 5.6%
Namibia	1 445	0.4%	1 996	0.6%	5 168	1.4%	7 577	2.2%	1 021	1.8%	+ 13.5%
Paraguay	4 234	1.2%	3 933	1.3%	5 404	1.5%	4 768	1.4%	810	1.4%	+ 24.3%
Botswana	788	0.2%	331	0.1%	928	0.3%	1 610	0.5%	740	1.3%	+++
New Zealand	6 116	1.8%	4 380	1.4%	5 202	1.4%	4 518	1.3%	654	1.1%	+ 11.0%
Switzerland	4 187	1.2%	4 714	1.5%	4 730	1.3%	3 627	1.0%	652	1.1%	+ 9.7%
Canada	1 550	0.5%	1 816	0.6%	2 172	0.6%	1 483	0.4%	242	0.4%	- 9.2%
Japan	789	0.2%	1 478	0.5%	2 143	0.6%	834	0.2%	122	0.2%	+ 50.6%
Norway	335	0.1%	571	0.2%	704	0.2%	670	0.2%	105	0.2%	- 7.7%
Serbia	931	0.3%	963	0.3%	1 058	0.3%	812	0.2%	90	0.2%	- 49.5%
Chile	168	0.0%	238	0.1%	378	0.1%	365	0.1%	29	0.0%	- 49.9%
<i>Other Destinations</i>	357	0.1%	710	0.2%	961	0.3%	352	0.1%	34	0.1%	
Total	344 403		309 267		359 985		350 968		57 243		
% change			- 10%		+ 16%		- 3%		+ 1.5%		

TRADE

EU Imports of Beef and Live Animals (Excl Fats):
Trade Figures (COMEXT)

EU IMPORTS

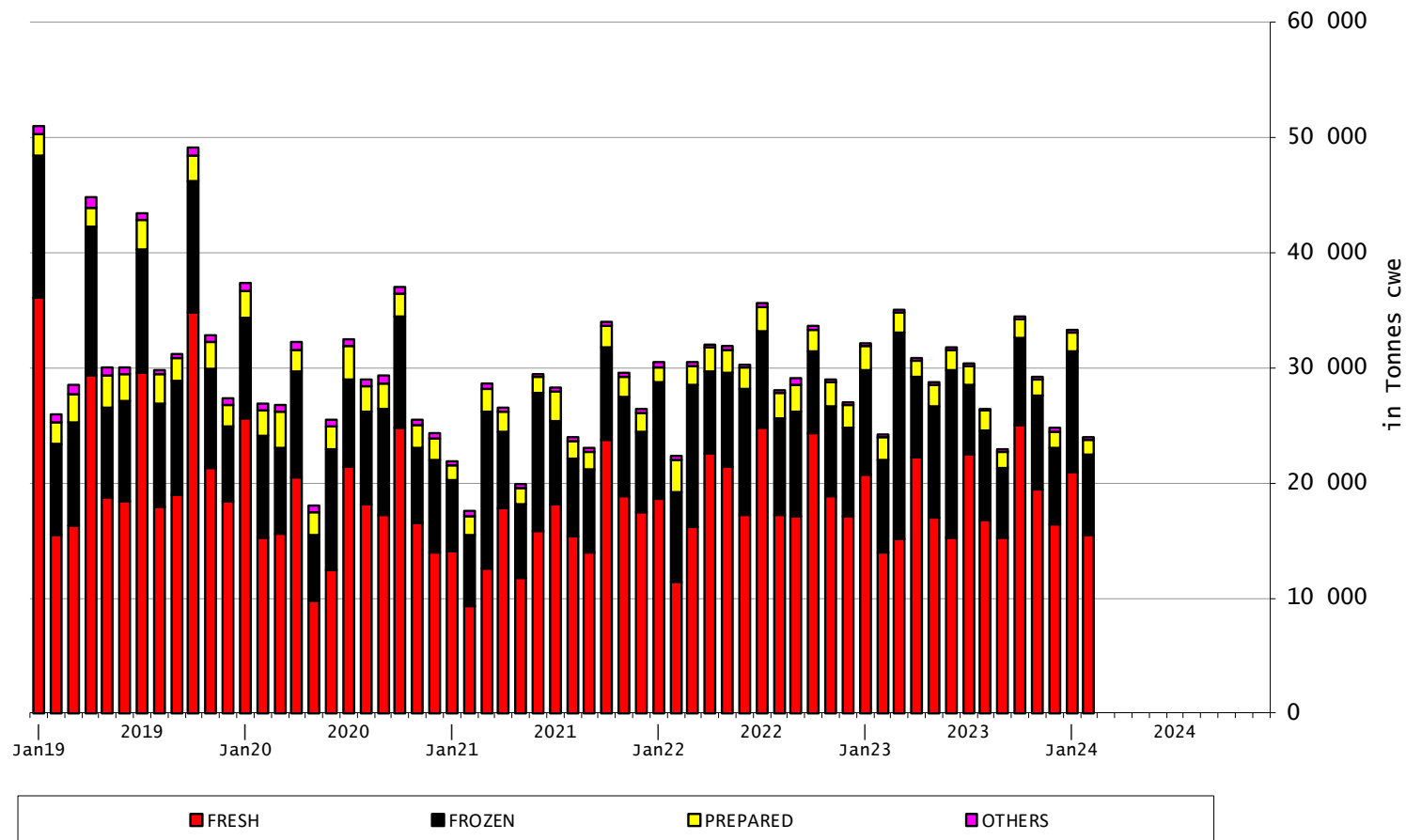
Beef & Live Animals (Excl Fats)



TRADE

EU IMPORTS Beef Products

EU Imports of BEEF products



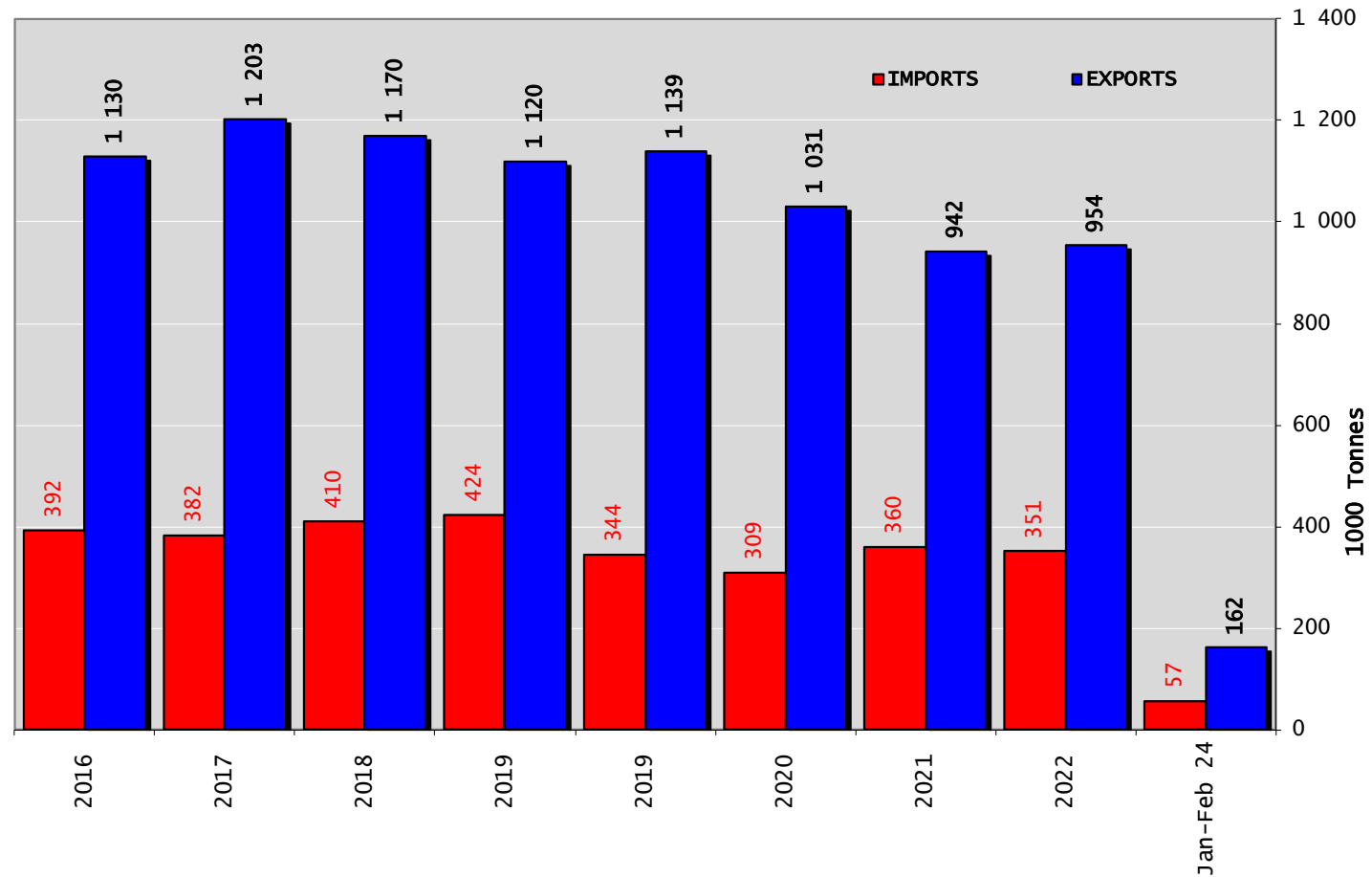
23 May 2024

TRADE

EUTRADE BALANCE

Beef & Live Animals

Trade Balance of Beef Products and Live Animals

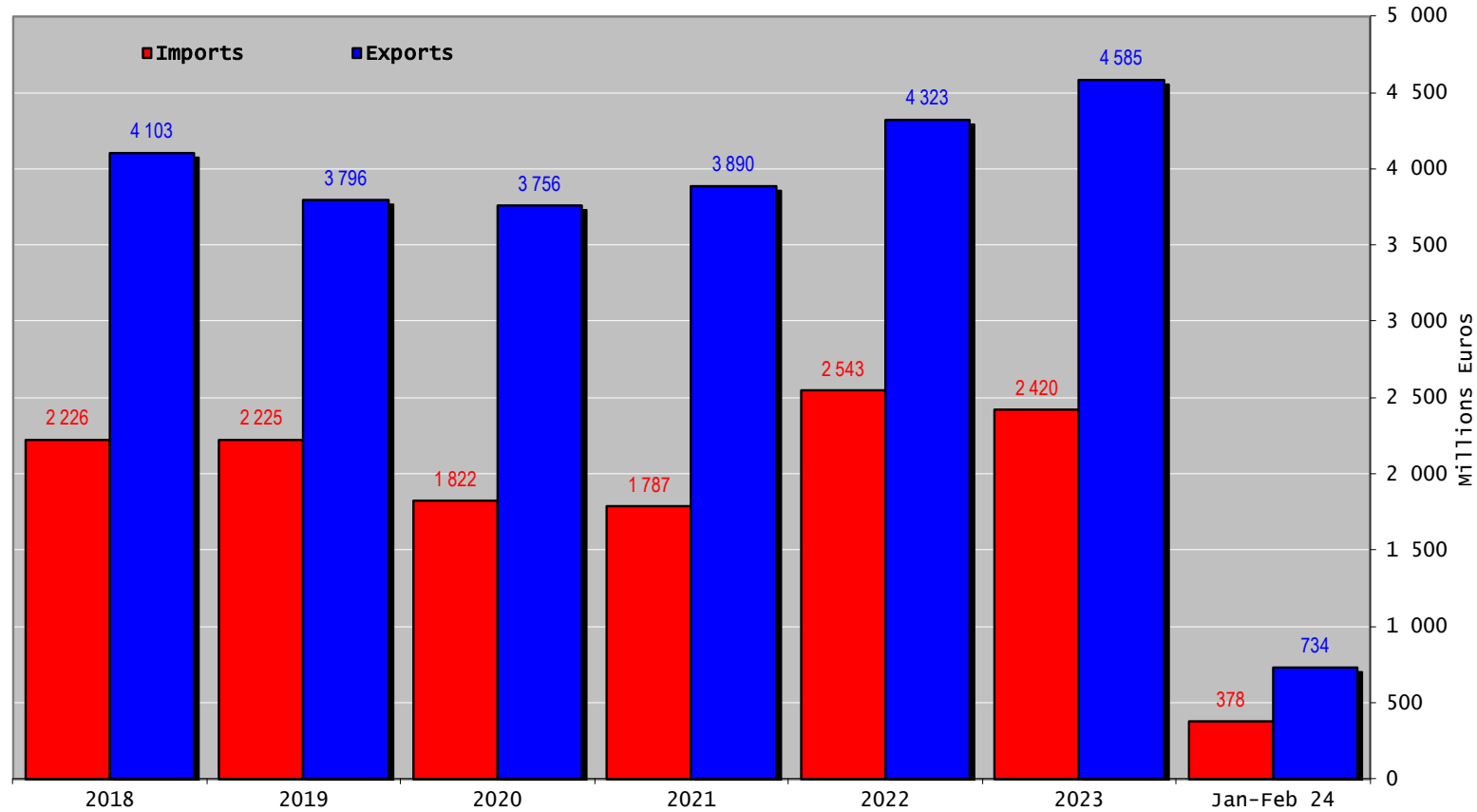


TRADE

EU TRADE BALANCE

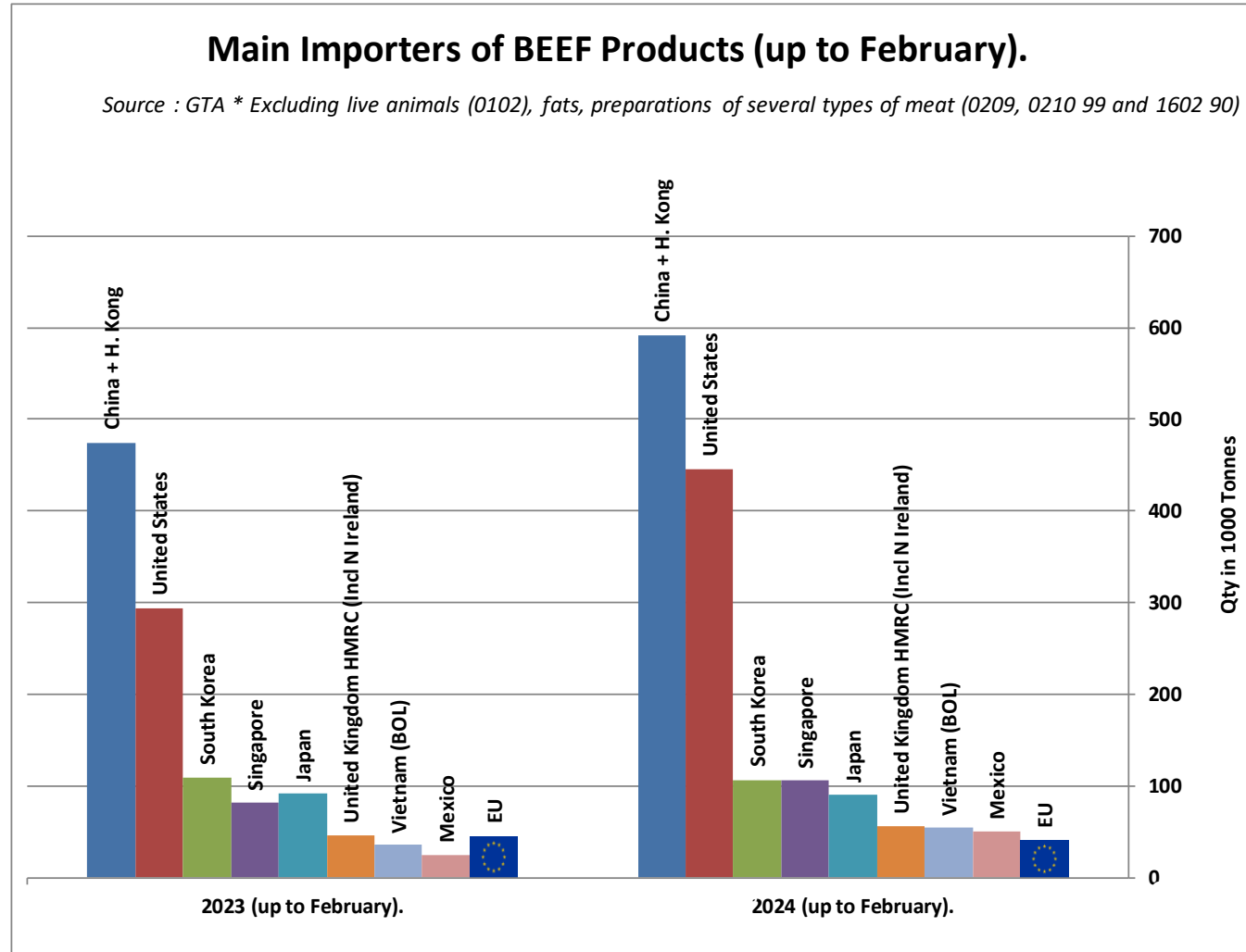
Beef & Live Animals

Trade Balance of Beef Products and Live Animals



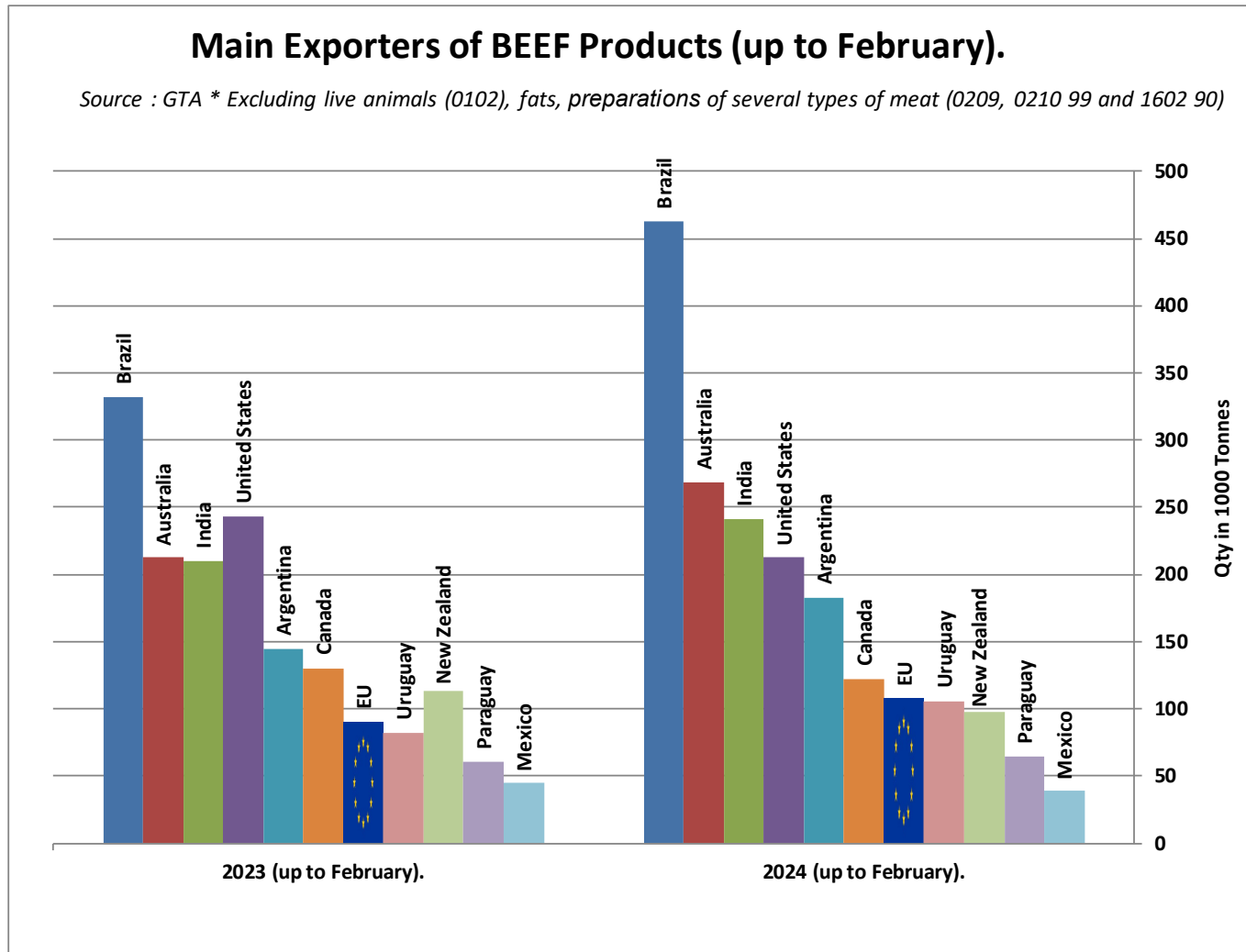
WORLD BEEF MARKET

E.U. + UK IMPORTS BEEF MAIN IMPORTERS



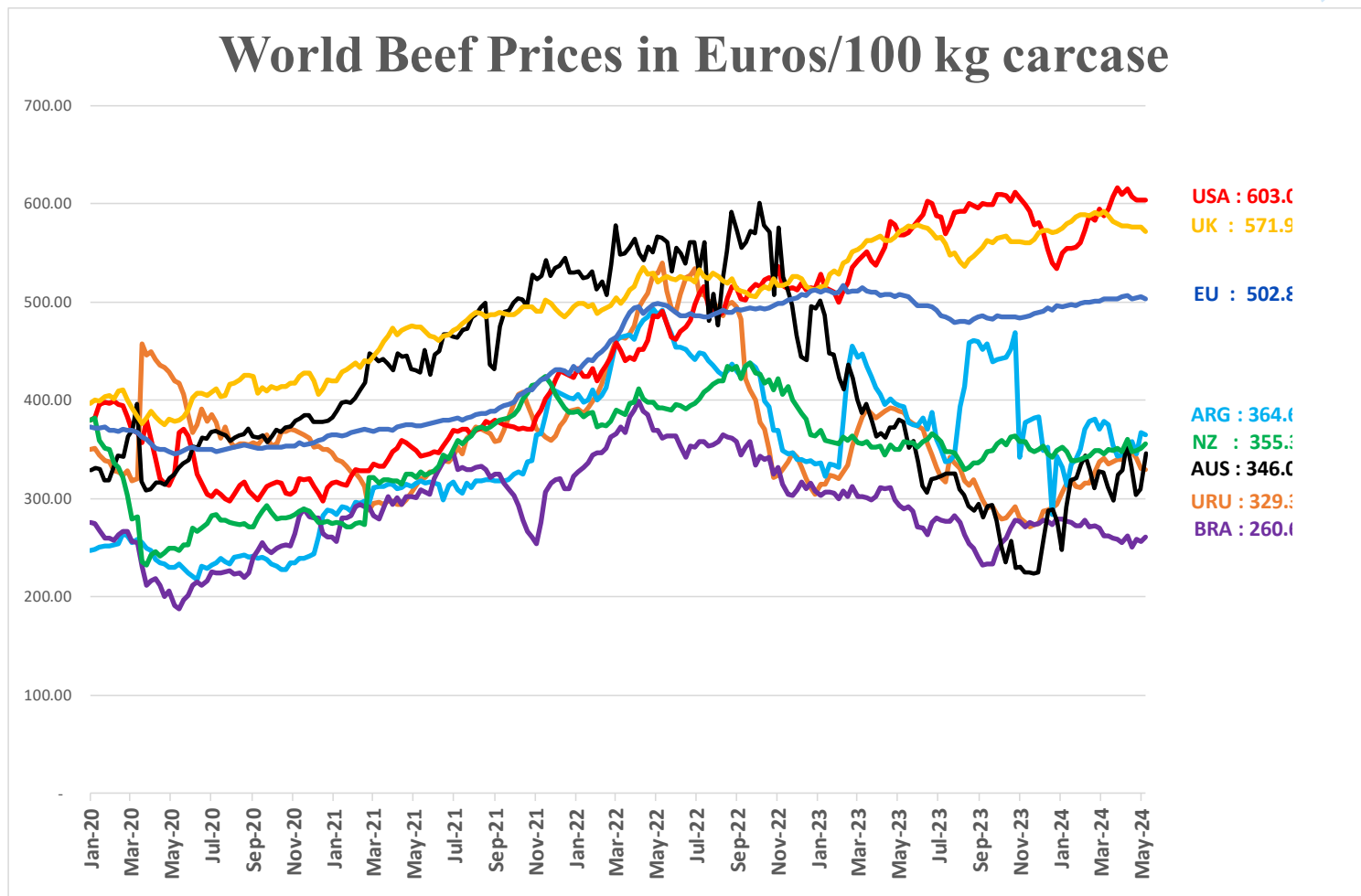
WORLD BEEF MARKET

E.U. + UK EXPORTS BEEF MAIN EXPORTERS



WORLD BEEF MARKET

STEER PRICES EU, US, AUS, NZ



USA, AUS, URU, ARG, NZ, BRA [World Beef Report](#)
GB <https://ahdb.org.uk/beef/gb-deadweight-cattle-prices-by-region>
EU [Member States Communication](#)

23 May 2024

THANK YOU VERY MUCH

More Information at:

EU Market Observatory

https://ec.europa.eu/agriculture/market-observatory/meat_en

And

Agri-FOOD data portal:

<http://agridata.ec.europa.eu/>

Thank you



© European Union 2020

Unless otherwise noted the reuse of this presentation is authorised under the [CC BY 4.0](https://creativecommons.org/licenses/by/4.0/) license. For any use or reproduction of elements that are not owned by the EU, permission may need to be sought directly from the respective right holders.

Slide xx: [element concerned](#), source: [e.g. Fotolia.com](#); Slide xx: [element concerned](#), source: [e.g. iStock.com](#)

