

Common Agricultural Policy: Key graphs & figures

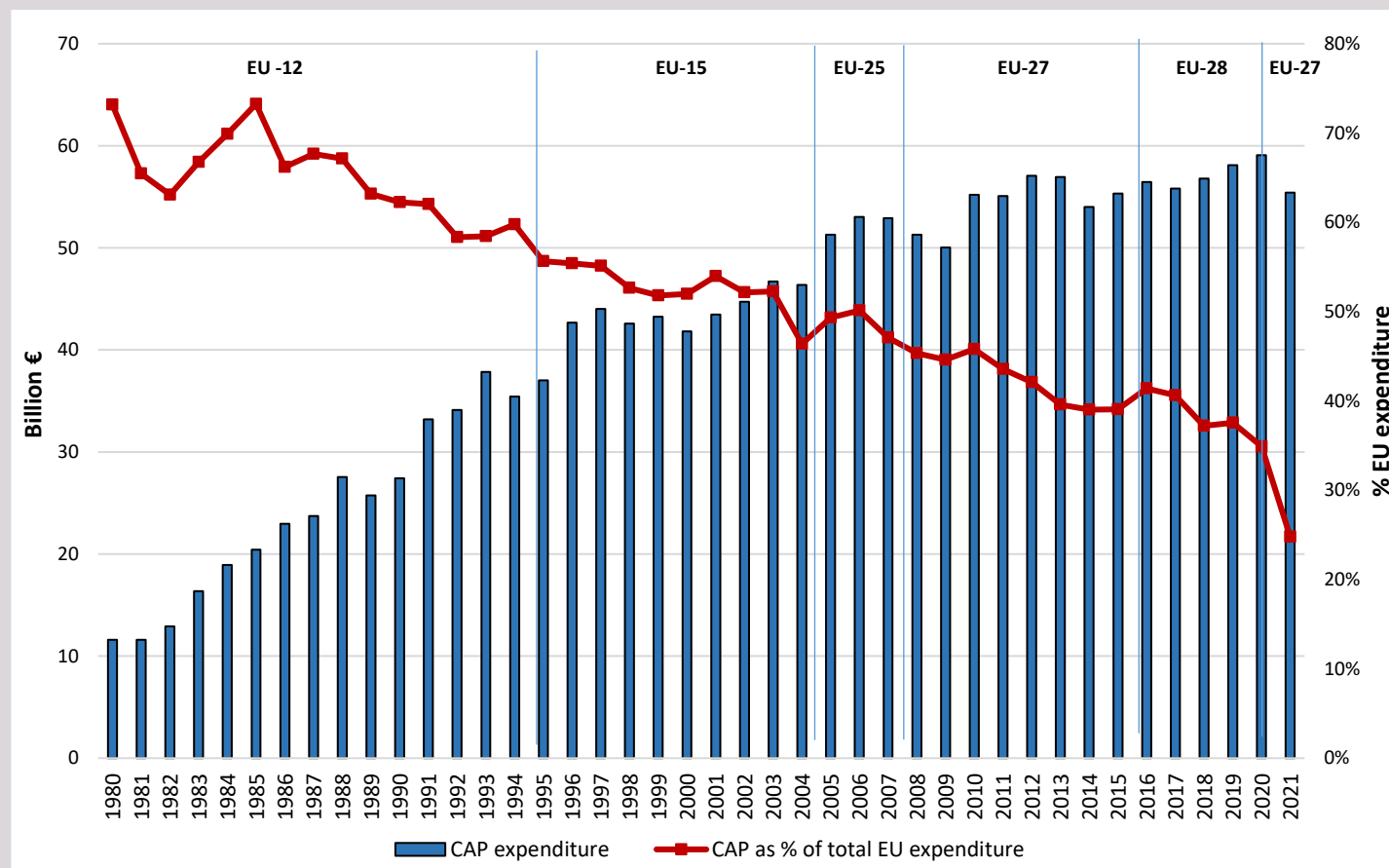
Graph 1

October 2022

CAP expenditure in the total EU expenditure

This graph shows the development of expenditure of the Common Agricultural Policy (CAP) over the years as a share of the EU budget. The share has decreased over the past 40 years, from 65.5% in 1980 to slightly less than 25% in 2021. This decrease has taken place despite the successive EU enlargements. The downward trend in the CAP's share of EU spending is mainly due to CAP reforms and the growing share of other EU policies in EU expenditure. The stronger decrease in 2021 is due to Brexit.

CAP expenditure in total EU expenditure (current prices)



Sources: CAP expenditure: European Commission, DG Agriculture and Rural Development (Financial Report).
EU expenditure: European Commission, DG BUDG