



European  
Commission

June 2021

## Statistical Factsheet

# EUROPEAN UNION



### CONTENTS

Key figures EU-27_2020	1
1. POPULATION & ECONOMY	2-5
2. FINANCIAL ASPECTS	6-8
3. ECONOMIC ACCOUNTS	9-16
4. AGRICULTURAL TRADE	17-20
5. FARM STRUCTURE	21-23

Country	Share in EU27_2020		
	GDP	Population	Rural population
	2020	2020	2020
Belgium	3.4%	2.6%	1.1%
Bulgaria	0.5%	1.6%	1.0%
Czechia	1.6%	2.4%	2.4%
Denmark	2.3%	1.3%	1.8%
Germany	25.0%	18.6%	14.0%
Estonia	0.2%	0.3%	0.6%
Ireland	2.8%	1.1%	3.0%
Greece	1.2%	2.4%	3.6%
Spain	8.4%	10.6%	1.7%
France	17.1%	15.0%	20.2%
Croatia	0.4%	0.9%	1.9%
Italy	12.4%	13.3%	6.3%
Cyprus	0.2%	0.2%	:
Latvia	0.2%	0.4%	0.4%
Lithuania	0.4%	0.6%	0.2%

Country	Share in EU27_2020		
	GDP	Population	Rural population
	2020	2020	2020
Luxembourg	0.5%	0.1%	:
Hungary	1.0%	2.2%	1.9%
Malta	0.1%	0.1%	:
Netherlands	6.0%	3.9%	0.1%
Austria	2.8%	2.0%	3.8%
Poland	3.9%	8.5%	14.6%
Portugal	1.5%	2.3%	3.4%
Romania	1.6%	4.3%	11.0%
Slovenia	0.3%	0.5%	1.3%
Slovakia	0.7%	1.2%	2.2%
Finland	1.8%	1.2%	2.3%
Sweden	3.5%	2.3%	1.0%

: no rural areas according to the EU urban-rural typology

Sources: European Commission(Ameco), Eurostat(Online Data Table: demo\_pjan, urt\_pjanagg)

Updated: June 2021

# European Union

## 1.1. POPULATION AND ECONOMY

### Population and gross domestic product: main data

EU Member States	Population		GDP at current prices		GDP in PPS (**)	
	Total population	Rural population (*)	Nominal GDP (million EUR)	GDP per capita (EUR)	Nominal GDP (million PPS)	GDP per capita (PPS)
	2020	2020	2020	2020	2020	2020
Belgium	11 522 440	979 680	451 177	38 438	401 800	34 800
Bulgaria	6 951 482	900 963	60 643	8 486	112 700	16 300
Czechia	10 693 939	2 266 457	213 660	19 444	296 500	27 700
Denmark	5 822 763	1 645 387	311 725	51 889	231 500	39 700
Germany	83 166 711	12 990 603	3 332 230	40 173	3 024 700	36 400
Estonia	1 328 976	587 531	27 167	20 324	34 100	25 600
Ireland	4 964 440	2 823 690	366 506	70 373	314 300	63 100
Greece	10 718 565	3 350 055	165 830	15 438	205 300	19 200
Spain	47 332 614	1 576 603	1 121 698	23 281	1 204 000	25 400
France	67 320 216	18 819 365	2 278 947	33 437	2 070 700	30 600
Croatia	4 058 165	1 724 293	49 283	11 987	76 600	18 900
Italy	59 641 488	5 885 082	1 651 595	27 084	1 653 900	27 500
Cyprus	888 005	:	20 841	23 660	23 800	26 800
Latvia	1 907 675	412 347	29 334	15 205	40 300	21 200
Lithuania	2 794 090	228 493	48 930	17 339	72 300	25 900
Luxembourg	626 108	:	64 143	95 670	50 400	79 900
Hungary	9 769 526	1 813 276	135 925	13 703	217 900	22 300
Malta	514 564	:	12 824	24 162	14 900	29 000
Netherlands	17 407 585	105 192	798 674	44 858	675 500	38 700
Austria	8 901 064	3 574 669	375 562	42 293	332 300	37 300
Poland	37 958 138	13 542 173	523 033	13 396	866 900	22 600
Portugal	10 295 909	3 172 862	202 466	19 222	237 200	23 000
Romania	19 328 838	10 255 681	218 166	11 097	408 000	21 100
Slovenia	2 095 861	1 218 053	46 297	21 901	55 000	26 100
Slovakia	5 457 873	2 036 437	91 555	16 424	120 300	22 000
Finland	5 525 292	2 169 107	237 467	42 283	187 400	33 900
Sweden	10 327 589	925 377	472 262	45 387	379 600	36 700

<b>EU27_2020</b>	<b>447 319 916</b>	<b>93 003 376</b>	<b>13 307 940</b>	<b>29 355</b>	<b>13 307 900</b>	<b>29 700</b>
------------------	--------------------	-------------------	-------------------	---------------	-------------------	---------------

Sources: Eurostat(Online Data Table: demo\_pjan, urt\_pjanaggr3) European Commission(AMECO)

: no rural areas according to the EU urban-rural typology

Updated: June 2021

(\*) Population living in predominantly rural regions, according to a revised urban-rural typology that classifies NUTS 3 regions based on the share of population in rural grid cells (see [ec.europa.eu/eurostat/statistics-explained/index.php/Urban-rural\\_typology](https://ec.europa.eu/eurostat/statistics-explained/index.php/Urban-rural_typology)).

(\*\*) PPS = Purchasing power standards. GDP in PPS eliminates differences in price levels between countries.

## 1.2. POPULATION AND ECONOMY

### Importance of rural areas

Urban/rural typology		Territory (total area) (km <sup>2</sup> )	Population (persons)	Gross Value Added (Million EUR)
		2016	2020	2018
EU27_2020	Predominantly rural	1 882 884	93 003 376	1 850 581
	Intermediate regions	1 930 008	174 075 939	4 090 511
	Predominantly urban	412 235	180 240 601	6 139 113
	<b>Total</b>	<b>4 225 127</b>	<b>447 319 916</b>	<b>12 080 205</b>
	Predominantly rural	44.6%	20.8%	15.3%
Intermediate regions	45.7%	38.9%	33.9%	
Predominantly urban	9.8%	40.3%	50.8%	

Sources: European Commission, Eurostat(Online Data Table: urt\_pjanagr3, urt\_d3area, urt\_10r\_3gva)

Updated: June 2021

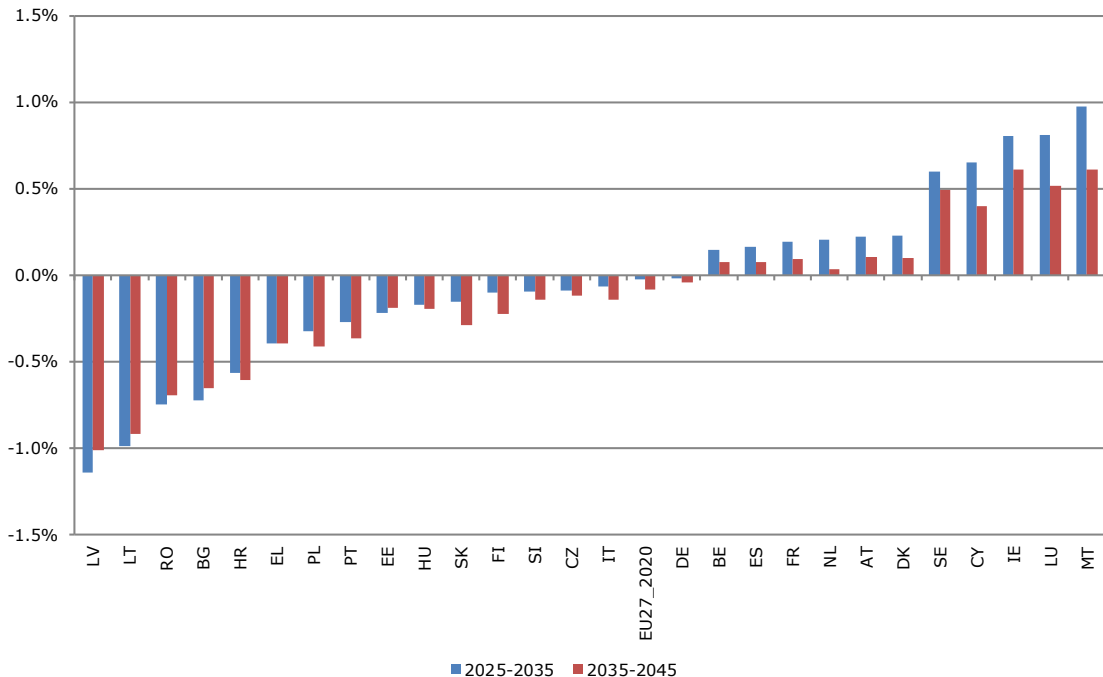
See the urban-rural typology of regions at [https://ec.europa.eu/eurostat/statistics-explained/index.php?title=Glossary:Urban-rural\\_typology](https://ec.europa.eu/eurostat/statistics-explained/index.php?title=Glossary:Urban-rural_typology)

Degree of urbanisation		Share of land	Share of population
		2018	2018
EU27_2020	Rural areas	76.1%	26.1%
	Towns and suburbs	19.8%	34.2%
	Cities	4.1%	39.7%

Source: Eurostat, GISCO

Note: Based on 2011 population grid, LAU 2018 delineation and NUTS 2016.

### Projected annual growth rates of population



Source: Eurostat(Online Data Table: proj\_19np)

Updated: June 2021

# European Union

## 1.3. POPULATION AND ECONOMY

### Real GDP growth rate

EU Member States	% change over previous year									
	2013	2014	2015	2016	2017	2018	2019	2020	2021(f)	2022(f)
Belgium	0.5%	1.6%	2.0%	1.3%	1.6%	1.8%	1.7%	-8.4%	4.1%	3.5%
Bulgaria	0.3%	1.9%	4.0%	3.8%	3.5%	3.1%	3.7%	-5.1%	2.6%	3.7%
Czechia	0%	2.3%	5.4%	2.5%	5.2%	3.2%	2.3%	-6.9%	3.1%	4.5%
Denmark	0.9%	1.6%	2.3%	3.2%	2.8%	2.2%	2.8%	-3.9%	3.5%	2.4%
Germany	0.4%	2.2%	1.5%	2.2%	2.6%	1.3%	0.6%	-5.6%	3.5%	2.6%
Estonia	1.3%	3.0%	1.8%	3.2%	5.5%	4.4%	5.0%	-4.6%	3.4%	3.5%
Ireland	1.2%	8.6%	25.2%	2.0%	9.1%	8.5%	5.6%	-2.3%	2.9%	2.6%
Greece	-2.7%	0.7%	-0.4%	-0.5%	1.3%	1.6%	1.9%	-9.0%	5.0%	3.5%
Spain	-1.4%	1.4%	3.8%	3.0%	3.0%	2.4%	2.0%	-12.4%	5.4%	4.8%
France	0.6%	1.0%	1.1%	1.1%	2.3%	1.8%	1.5%	-9.4%	5.8%	3.1%
Croatia	-0.4%	-0.3%	2.4%	3.5%	3.4%	2.8%	2.9%	-9.6%	5.7%	3.7%
Italy	-1.8%	0.0%	0.8%	1.3%	1.7%	0.9%	0.3%	-9.9%	4.1%	2.8%
Cyprus	-6.6%	-1.8%	3.2%	6.4%	5.2%	5.2%	3.1%	-6.2%	3.7%	3.0%
Latvia	2.3%	1.1%	4.0%	2.4%	3.3%	4.0%	2.1%	-5.6%	4.9%	3.5%
Lithuania	3.6%	3.5%	2.0%	2.5%	4.3%	3.9%	4.3%	-2.2%	3.0%	2.6%
Luxembourg	3.7%	4.3%	4.3%	4.6%	1.8%	3.1%	2.3%	-4.5%	3.9%	2.7%
Hungary	1.9%	4.2%	3.8%	2.1%	4.3%	5.4%	4.6%	-6.4%	4.0%	4.5%
Malta	5.5%	7.6%	9.6%	3.9%	8.0%	5.2%	4.9%	-7.3%	3.0%	6.2%
Netherlands	-0.1%	1.4%	2.0%	2.2%	2.9%	2.4%	1.7%	-5.3%	2.2%	1.9%
Austria	0.0%	0.7%	1.0%	2.0%	2.4%	2.6%	1.4%	-7.1%	4.1%	2.5%
Poland	1.1%	3.4%	4.2%	3.1%	4.8%	5.4%	4.5%	-3.6%	3.3%	3.5%
Portugal	-0.9%	0.8%	1.8%	2.0%	3.5%	2.8%	2.2%	-9.3%	5.4%	3.5%
Romania	3.8%	3.6%	3.0%	4.7%	7.3%	4.5%	4.2%	-5.2%	3.3%	3.8%
Slovenia	-1.0%	2.8%	2.2%	3.2%	4.8%	4.4%	3.2%	-7.1%	5.1%	3.8%
Slovakia	0.7%	2.6%	4.8%	2.1%	3.0%	3.8%	2.3%	-7.5%	4.7%	4.3%
Finland	-0.9%	-0.4%	0.5%	2.8%	3.3%	1.5%	1.1%	-4.3%	2.9%	2.2%
Sweden	1.2%	2.7%	4.5%	2.1%	2.6%	2.0%	1.3%	-3.4%	3.3%	2.4%
European Union (EU27)	<b>0.0%</b>	<b>1.6%</b>	<b>2.3%</b>	<b>2.0%</b>	<b>2.8%</b>	<b>2.1%</b>	<b>1.5%</b>	<b>-7.4%</b>	<b>4.1%</b>	<b>3.0%</b>

Source: European Commission, Directorate General for Economic and Financial Affairs

f: forecasts.

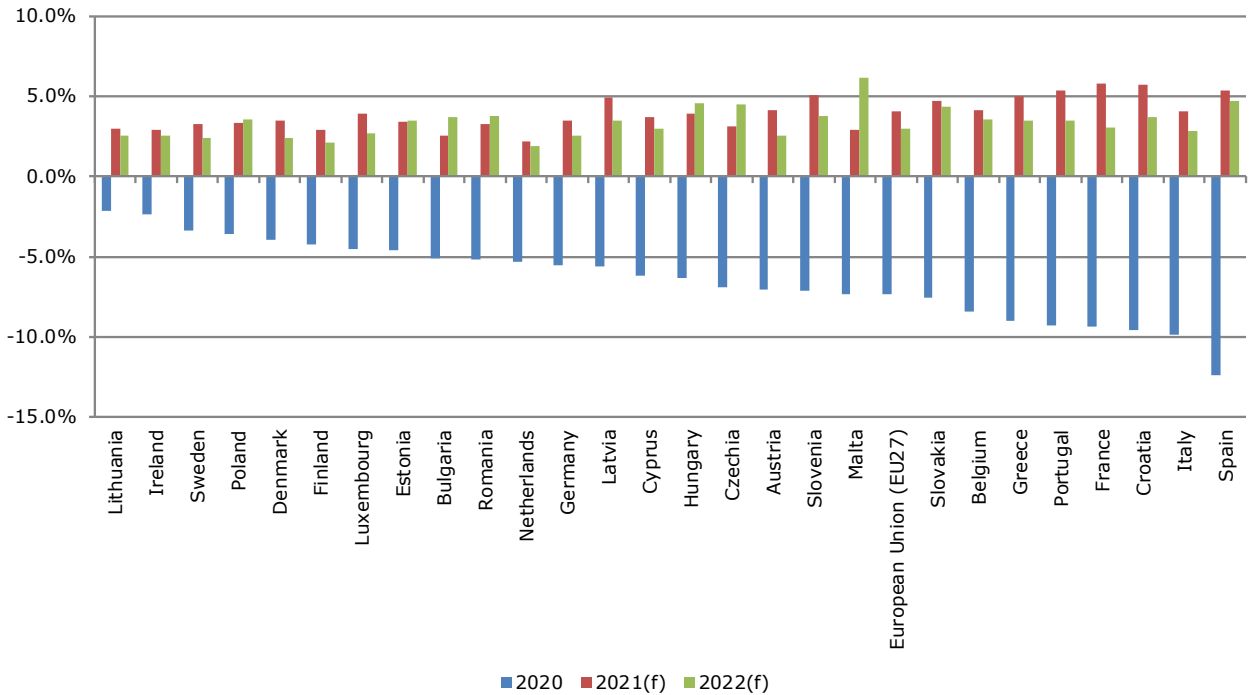
Updated: June 2021

Note: Gross domestic product at 2015 reference levels (Ameco: OVGD)

# European Union

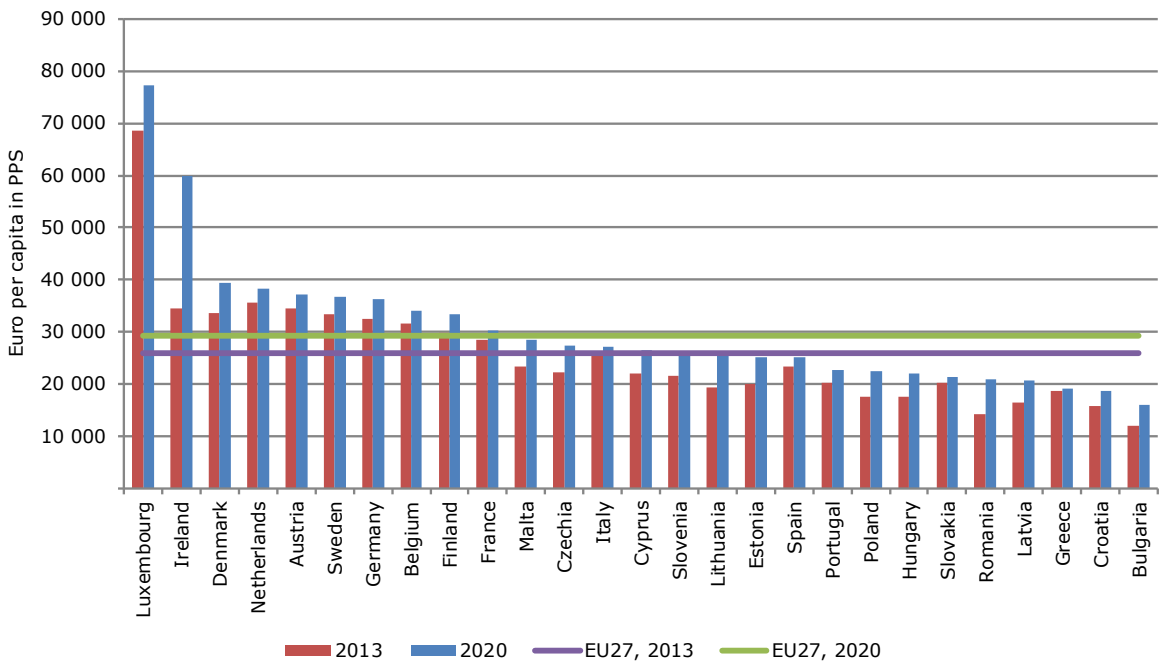
## 1.4. POPULATION AND ECONOMY

### Real GDP growth rate over previous rate



f: Forecast

### Evolution of GDP per capita in PPS



## 2.1. AGRICULTURE: FINANCIAL ASPECTS

### CAP expenditure

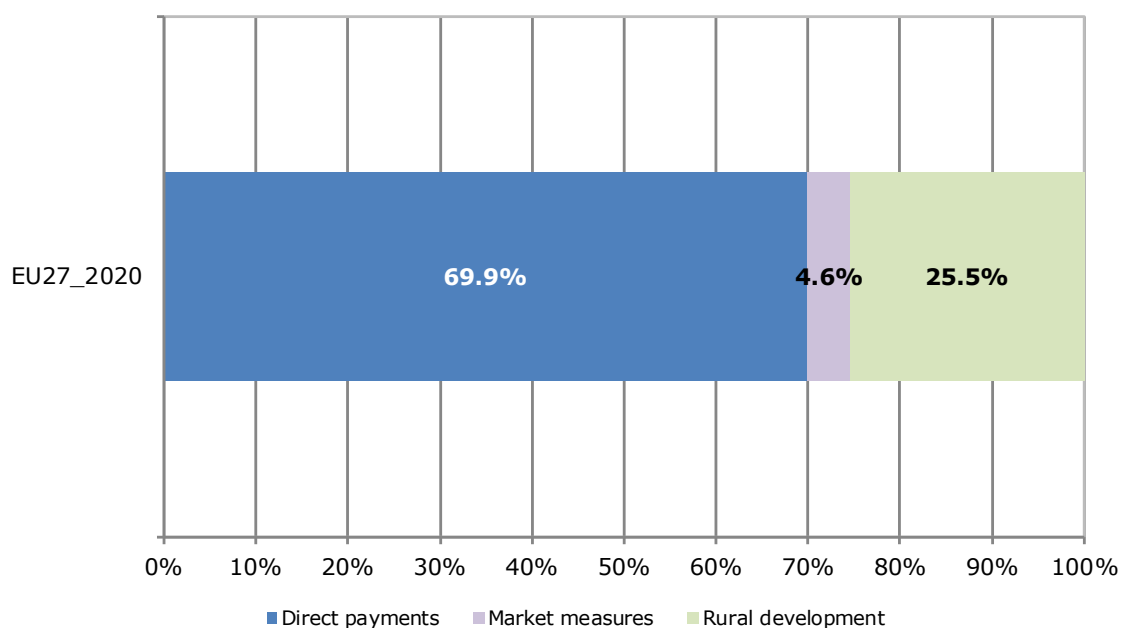
Measures	2020		
	1 000 EUR		
Decoupled direct aids	32 335 053	59.1%	84.6%
Other direct aids	5 477 600	10.0%	14.3%
Reimbursement of direct aids in relation to financial discipline	421 959	0.8%	1.1%
<b>Direct payments (Total)</b>	<b>38 234 612</b>	<b>69.9%</b>	<b>100.0%</b>
Cereals	0	0.0%	0.0%
Olive oil	35 136	0.1%	1.4%
Fruit and vegetables	865 703	1.6%	34.3%
Wine sector	1 056 621	1.9%	41.9%
Promotion	76 105	0.1%	3.0%
Other plant products/measures	227 749	0.4%	9.0%
Milk and milk products	926	0.0%	0.0%
Beef and veal	49 532	0.1%	2.0%
Pigmeat, eggs, poultry and other	49 408	0.1%	2.0%
School schemes*	159 259	0.3%	6.3%
<b>Market measures (Total)</b>	<b>2 520 441</b>	<b>4.6%</b>	<b>100%</b>
<b>Rural development (Total)</b>	<b>13 919 080</b>	<b>25.5%</b>	<b>100%</b>
<b>TOTAL</b>	<b>54 674 132</b>	<b>100.0%</b>	

Note: Expenditure in commitments for direct payments and market measures; ceilings of support for rural development.

\*Programme implementation based on school years; reimbursement possible in the next financial year

Source: European Commission, Directorate General for Agriculture and Rural Development

Updated: June 2021



# European Union

## 2.2. AGRICULTURE: FINANCIAL ASPECTS

### CAP expenditure by Member State in 2020

EU Member States	Direct payments	Market measures	Rural development	Total
	1 000 EUR	1 000 EUR	1 000 EUR	1 000 EUR
Belgium	481 836	60 758	102 723	<b>645 317</b>
Bulgaria	781 855	18 386	338 990	<b>1 139 231</b>
Czechia	855 832	16 537	321 615	<b>1 193 984</b>
Denmark	814 070	12 212	151 589	<b>977 871</b>
Germany	4 768 123	117 256	1 394 589	<b>6 279 967</b>
Estonia	142 536	1 476	129 177	<b>273 189</b>
Ireland	1 201 194	59 338	312 570	<b>1 573 102</b>
Greece	1 982 609	59 445	698 261	<b>2 740 315</b>
Spain	5 125 093	599 856	1 183 394	<b>6 908 343</b>
France	6 909 823	550 551	1 987 740	<b>9 448 114</b>
Croatia	317 338	13 061	282 343	<b>612 741</b>
Italy	3 599 133	677 514	1 501 763	<b>5 778 411</b>
Cyprus	48 125	5 922	18 881	<b>72 929</b>
Latvia	277 306	3 048	161 492	<b>441 846</b>
Lithuania	480 492	3 344	264 151	<b>747 987</b>
Luxembourg	32 841	556	14 511	<b>47 909</b>
Hungary	1 266 719	40 211	486 663	<b>1 793 593</b>
Malta	5 117	344	13 859	<b>19 320</b>
Netherlands	666 190	22 583	147 976	<b>836 749</b>
Austria	691 597	22 298	567 266	<b>1 281 161</b>
Poland	3 402 201	25 553	1 187 301	<b>4 615 055</b>
Portugal	680 228	107 898	582 456	<b>1 370 581</b>
Romania	1 912 461	65 671	1 139 927	<b>3 118 059</b>
Slovenia	133 869	7 022	120 721	<b>261 611</b>
Slovakia	447 758	11 255	214 525	<b>673 538</b>
Finland	523 450	6 473	344 777	<b>874 699</b>
Sweden	686 818	11 875	249 819	<b>948 511</b>
EU27_2020	38 234 612	2 520 441	13 919 080	<b>54 674 132</b>

Note: Expenditure in commitments for direct payments and market measures; ceilings of support for rural development from EU budget only.

Sources: European Commission, Directorate General for Agriculture and Rural Development.

Updated: June 2021

## 2.3. AGRICULTURE: FINANCIAL ASPECTS

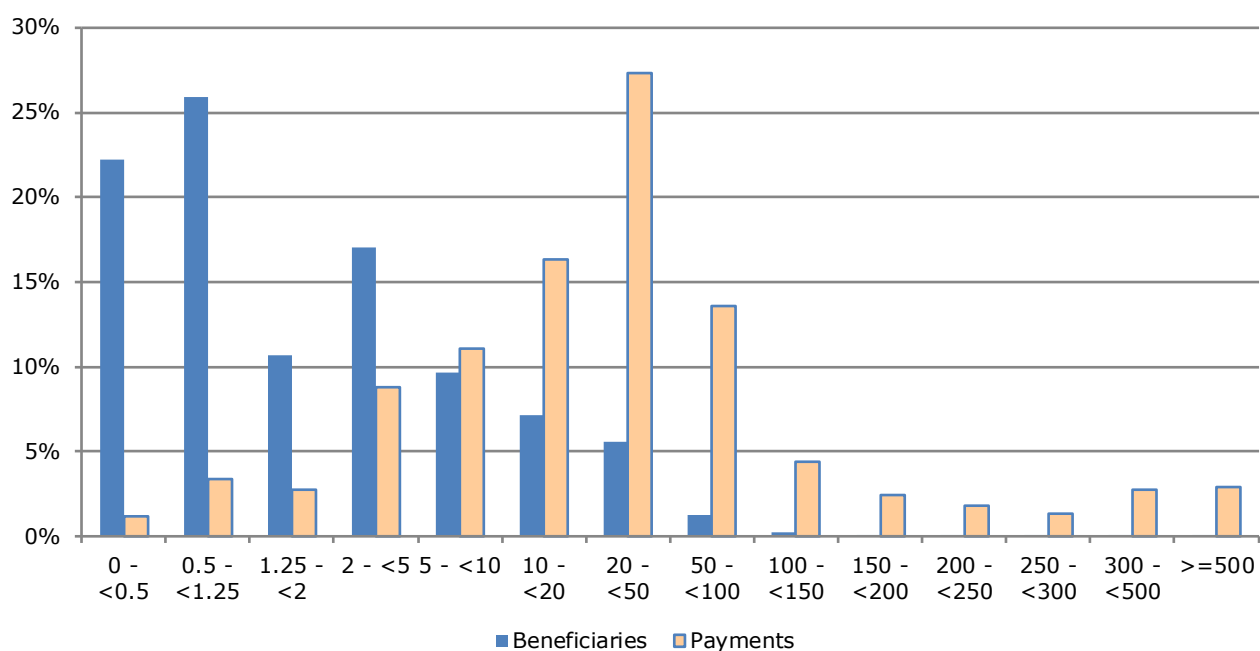
### Distribution of direct aids to producers in financial year 2019\*

Size-class of aid (all direct payments)	Financial year 2019			
	Beneficiaries		Payments in EUR	
	x 1 000	% of total	x 1 000	% of total
< 0 €	2	0.0%	- 2 308	0.0%
≥ 0 and < 500 €	1 368	22.2%	447 566	1.2%
≥ 500 and < 1 250 €	1 595	25.9%	1 282 783	3.4%
≥ 1 250 and < 2 000 €	660	10.7%	1 049 320	2.7%
≥ 2 000 and < 5 000 €	1 051	17.1%	3 357 392	8.8%
≥ 5 000 and < 10 000 €	596	9.7%	4 223 279	11.1%
≥ 10 000 and < 20 000 €	439	7.1%	6 221 012	16.3%
≥ 20 000 and < 50 000 €	342	5.5%	10 436 020	27.3%
≥ 50 000 and < 100 000 €	78	1.3%	5 199 637	13.6%
≥ 100 000 and < 150 000 €	14	0.2%	1 689 877	4.4%
≥ 150 000 and < 200 000 €	5	0.1%	917 808	2.4%
≥ 200 000 and < 250 000 €	3	0.0%	682 657	1.8%
≥ 250 000 and < 300 000 €	2	0.0%	501 592	1.3%
≥ 300 000 and < 500 000 €	3	0.0%	1 045 106	2.7%
≥ 500 000 €	1	0.0%	1 110 404	2.9%
<b>Total</b>	<b>6 158</b>	<b>100%</b>	<b>38 162 145</b>	<b>100%</b>

\*Notes:

- Figures for financial year 2020 will become available during the second half of 2021.
- Negative values represent beneficiaries that in total reimbursed money to the EAGF (recoveries, corrections, etc.)

### Distribution of direct aid by size-class of aid in EU27-2020 (1 000 EUR)



Source: European Commission, Directorate General for Agriculture and Rural Development

Updated: June 2021

Note: In order to protect the anonymity of the beneficiaries, numbers less than 10 have been made invisible in this table



## 3.1. AGRICULTURE: ECONOMIC ACCOUNTS

### Agricultural output

Output components (real prices)	2018	2019	2020 (e)	
	Million EUR		Million EUR	% of total
<b>Cereals</b>	<b>41 243</b>	<b>42 191</b>	<b>40 782</b>	<b>21.0%</b>
<i>Wheat and spelt</i>	19 394	20 041	18 962	9.7%
<i>Rye and meslin</i>	823	998	1 127	0.6%
<i>Barley</i>	7 544	7 786	7 411	3.8%
<i>Oats and summer cereal mixtures</i>	1 228	1 250	1 443	0.7%
<i>Grain maize</i>	9 985	9 621	9 467	4.9%
<i>Rice</i>	654	706	689	0.4%
<i>Other cereals</i>	1 616	1 788	1 683	0.9%
<b>Industrial crops</b>	<b>17 940</b>	<b>16 580</b>	<b>16 555</b>	<b>8.5%</b>
<i>Oil seeds and oleaginous fruits</i>	9 356	8 514	9 016	4.6%
<i>Protein crops</i>	1 101	1 113	1 093	0.6%
<i>Raw tobacco</i>	528	524	496	0.3%
<i>Sugar beet</i>	2 660	2 619	1 718	0.9%
<i>Other industrial crops</i>	4 296	3 810	4 232	2.2%
<b>Forage plants</b>	<b>20 459</b>	<b>22 173</b>	<b>21 963</b>	<b>11.3%</b>
<b>Vegetables and horticultural products</b>	<b>49 318</b>	<b>51 996</b>	<b>51 645</b>	<b>26.5%</b>
<b>Potatoes</b>	<b>10 958</b>	<b>12 834</b>	<b>10 811</b>	<b>5.6%</b>
<b>Fruits</b>	<b>27 929</b>	<b>25 433</b>	<b>27 351</b>	<b>14.1%</b>
<b>Wine</b>	<b>25 278</b>	<b>20 671</b>	<b>19 985</b>	<b>10.3%</b>
<b>Olive oil</b>	<b>4 523</b>	<b>5 143</b>	<b>3 465</b>	<b>1.8%</b>
<b>Other crop products</b>	<b>2 082</b>	<b>2 126</b>	<b>1 972</b>	<b>1.0%</b>
<b>Crop output</b>	<b>199 731</b>	<b>199 148</b>	<b>194 529</b>	<b>57.9%</b>
<b>Animals</b>	<b>83 639</b>	<b>86 470</b>	<b>83 374</b>	<b>59.0%</b>
<i>Cattle</i>	26 782	25 548	24 482	17.3%
<i>Pigs</i>	32 014	36 231	35 205	24.9%
<i>Equines</i>	1 013	962	864	0.6%
<i>Sheep and goats</i>	3 545	3 472	3 505	2.5%
<i>Poultry</i>	18 145	18 091	17 275	12.2%
<i>Other animals</i>	2 141	2 166	2 042	1.4%
<b>Animal products</b>	<b>60 204</b>	<b>59 047</b>	<b>57 998</b>	<b>41.0%</b>
<i>Milk</i>	48 806	48 609	47 728	33.8%
<i>Eggs</i>	8 769	8 197	8 083	5.7%
<i>Other animal products</i>	2 629	2 242	2 187	1.5%
<b>Animal output</b>	<b>143 843</b>	<b>145 517</b>	<b>141 372</b>	<b>42.1%</b>
<b>Agricultural goods output</b>	<b>343 574</b>	<b>344 665</b>	<b>335 901</b>	<b>100.0%</b>

Source: Eurostat, (Online Data Table: aact\_eaa04) Economic Accounts for Agriculture (Production value at basic price), Chain linked volumes (2010), million euro

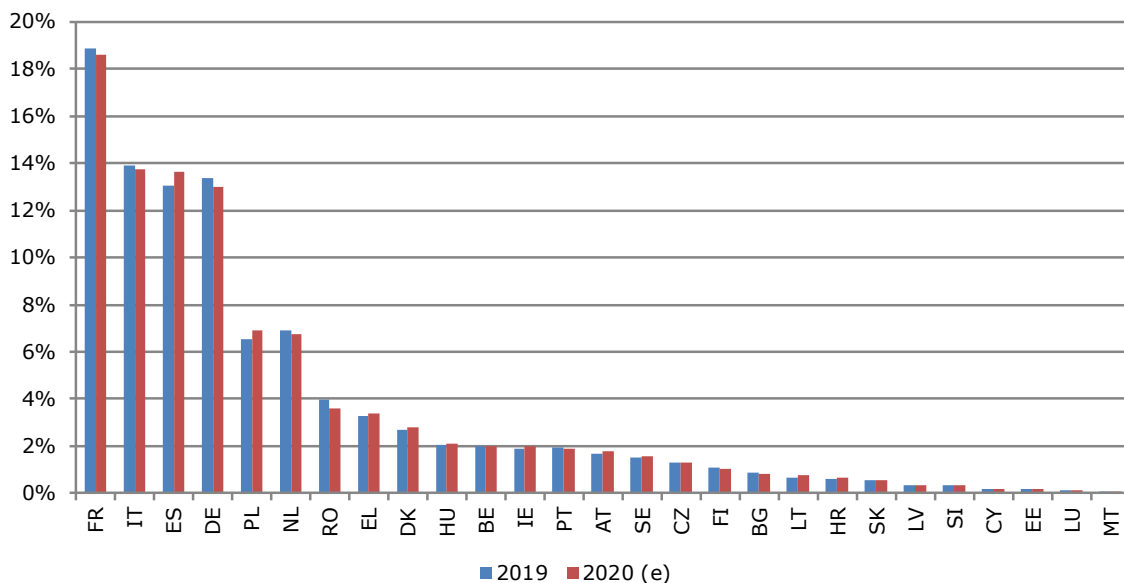
e: Estimation

Updated: June 2021

## 3.2. AGRICULTURE: ECONOMIC ACCOUNTS

### Agricultural industry output (\*)

Agricultural industry contribution to the EU27\_2020 total agricultural output, %



Source: Eurostat, Economic Accounts for Agriculture (values at current producer prices). Updated: December 2014.

(\*) The output of the agricultural industry comprises the output of agricultural production and the output of non-agricultural secondary activities that are inseparable from the principal agricultural activity.

Source: Eurostat (Online Data Table: aact\_eaa04), Real Prices

Updated: June 2021

### Agricultural input

Input components (real prices)	2018	2019	2020 (e)	2019/2018	2020 (e) / 2019
	Million EUR			% change	
Seeds and planting stock	11 125	11 440	11 172	2.8%	-2.3%
Energy	24 934	24 439	21 838	-2.0%	-10.6%
Fertilisers and soil improvers	13 850	13 931	13 123	0.6%	-5.8%
Plant protection products	10 408	10 252	9 961	-1.5%	-2.8%
Veterinary expenses	5 470	5 409	5 465	-1.1%	1.0%
Feedingstuffs	81 872	80 665	80 507	-1.5%	-0.2%
Maintenance of materials	12 865	12 886	12 952	0.2%	0.5%
Maintenance of buildings	4 250	4 301	4 320	1.2%	0.4%
Agricultural services	16 147	16 149	16 104	0.0%	-0.3%
Other goods and services	30 578	30 574	30 095	0.0%	-1.6%
<b>Total intermediate consumption</b>	<b>214 870</b>	<b>213 242</b>	<b>208 673</b>	<b>-0.8%</b>	<b>-2.1%</b>
<b>Fixed capital consumption</b>	<b>52 951</b>	<b>53 393</b>	<b>52 875</b>	<b>0.8%</b>	<b>-1.0%</b>

Source: Eurostat(Online Data Table: aact\_eaa04), Economic Accounts for Agriculture (Production value at basic price), Chain linked volumes (2010) e: Estimations

Updated: June 2021

## 3.3. AGRICULTURE: ECONOMIC ACCOUNTS

### Agricultural income

Values at real prices	2018	2019	2020 (e)	2019/2018	2020 (e) /2019
	Million EUR			% change	
<b>Output of the agricultural "industry":</b>	<b>376 285</b>	<b>377 184</b>	<b>367 334</b>	<b>0.2%</b>	<b>-2.6%</b>
<b>Crop output</b>	<b>199 731</b>	<b>199 148</b>	<b>194 529</b>	-0.3%	-2.3%
<b>Animal output:</b>	<b>143 843</b>	<b>145 517</b>	<b>141 372</b>	1.2%	-2.8%
Animals	199 731	199 148	194 529	-0.3%	-2.3%
Animal products	60 204	59 047	57 998	-1.9%	-1.8%
<b>Agricultural services</b>	<b>18 054</b>	<b>18 141</b>	<b>17 909</b>	0.5%	-1.3%
<b>Secondary activities</b>	<b>14 657</b>	<b>14 379</b>	<b>13 523</b>	-1.9%	-5.9%
<b>Intermediate consumption</b>	<b>214 870</b>	<b>213 242</b>	<b>208 673</b>	<b>-0.8%</b>	<b>-2.1%</b>
<b>Gross value added at basic prices</b>	<b>161 415</b>	<b>163 943</b>	<b>158 661</b>	<b>1.6%</b>	<b>-3.2%</b>
- Consumption of fixed capital	52 951	53 393	52 875	0.8%	-1.0%
- Taxes	4 237	4 313	4 323	1.8%	0.2%
+ Subsidies	45 702	45 447	44 165	-0.6%	-2.8%
<b>= Factor income</b>	<b>149 928</b>	<b>151 684</b>	<b>145 627</b>	<b>1.2%</b>	<b>-4.0%</b>

<b>Agricultural income* (2010=100)</b>	<b>124.5</b>	<b>128.8</b>	<b>127.2</b>	<b>3.4%</b>	<b>-1.2%</b>
--	--------------	--------------	--------------	-------------	--------------

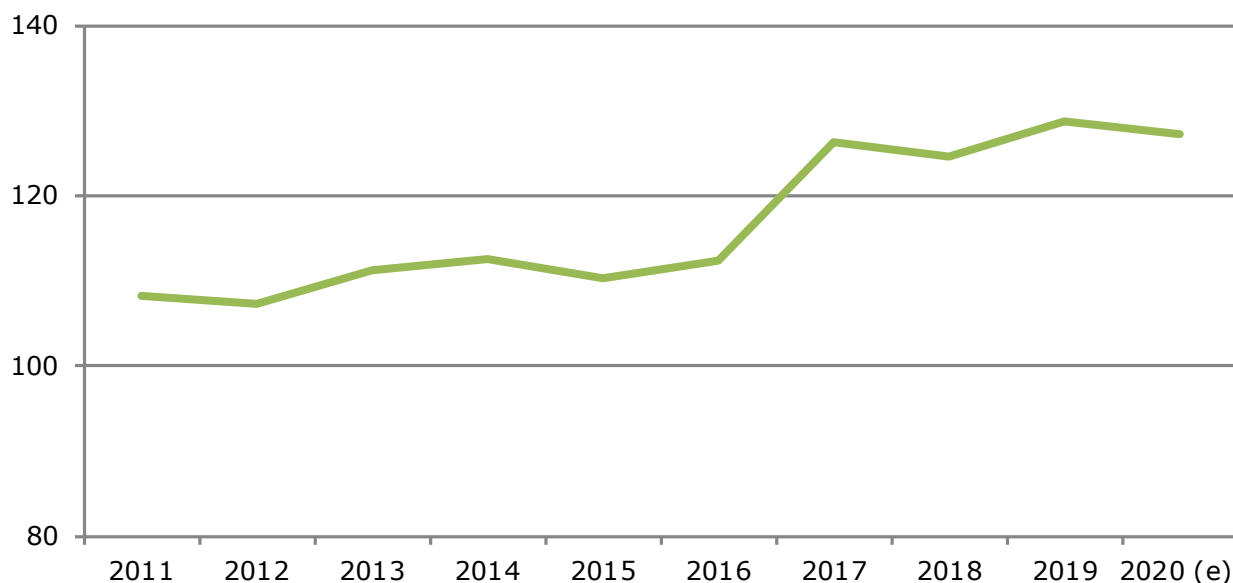
Source: Eurostat(Online Data Table: aact\_eaa04, aact\_eaa06), Economic Accounts for Agriculture (Production value at basic price)

Updated: June 2021

\*Indicator A: See definition at Page 12

e: Estimations

### Evolution of agricultural income, Indicator A (2010 = 100)



Source: Eurostat(Online Data Table: aact\_eaa06), Economic Accounts for Agriculture e:Estimations

Updated: June 2021

## 3.4. AGRICULTURE: ECONOMIC ACCOUNTS

### Evolution of agricultural income

**Indicator A:** Index of the real income of factors in agriculture per annual work unit (AWU). This measure corresponds to the real net value added at factor cost of agriculture per total AWU.

Indicator A (2010=100)	2011	2012	2013	2014	2015	2016	2017	2018	2019	2020 (e)
Belgium	89.34	109.4	87.67	83.71	92.74	82.49	88.98	79.1	91.86	84.16
Bulgaria	115.64	133.37	162.01	173.46	158.97	189.45	223.76	221.89	250.38	246.21
Czechia	134.84	133.73	135.08	155.37	137.98	155.74	151.09	144.75	150.92	150.26
Denmark	112.38	153.5	106.69	109.21	69.52	67.08	106.01	90.33	105.8	106.43
Germany	118.14	105.61	122.84	116.96	82.64	87.21	118.18	85.09	117.53	100.4
Estonia	124.39	143.43	132.74	123.76	100.41	63.04	106.32	82.19	108.91	112.62
Ireland	127.98	115.05	118.93	122.67	119.41	122.83	151.98	134.8	135.49	140.68
Greece	89.07	91.51	84.21	89.9	96.32	85.67	98.35	96.9	106.74	114.38
Spain	101.19	102.74	112.88	118.57	125.24	135.84	134.51	132.14	127.94	144.6
France	104.58	105.27	89.54	101.83	107.16	93.42	108.85	123.95	115.99	107.12
Croatia	95.5	81.72	90.47	78.28	105.76	117.67	117.8	125.29	132.47	150
Italy	117.23	124.18	146.62	134.46	130.75	127.27	130.83	146.74	141.03	134.14
Cyprus	74.93	103.56	102.59	94.84	122.73	122.82	123.38	118.58	121.64	126.35
Latvia	95.82	115.29	103.99	115.62	131.17	119.57	147.7	131.24	166.22	177.98
Lithuania	125.89	156.77	138.44	125.76	135.36	112.72	140.4	105.41	138.4	180.23
Luxembourg	99.81	105.25	90.66	118.81	98.97	90.64	114.76	122.86	118.25	118.34
Hungary	149.33	137.9	151.68	161.15	152.58	162.89	165.25	170.05	183.06	204.24
Malta	87.85	83.01	80.16	78.89	93.59	68.83	62.93	83.52	82.55	83.43
Netherlands	85.56	92.3	103.64	99.53	101.64	102.4	112.57	93.79	95.73	90.83
Austria	114.14	107.39	95.05	88.96	84.22	94.97	106.15	100.48	94.69	99.84
Poland	113.77	106.22	114.81	95.64	96.9	124.41	142.89	133.77	139.92	141.44
Portugal	86.03	92.44	105.94	107.16	116.36	125.7	131	131.03	138.82	134.12
Romania	129.06	96.13	113.56	123.94	116.22	119.99	136.01	138.37	139.97	120.65
Slovenia	114.01	90.72	91.14	103.21	114.1	104.45	97.5	135.56	120.16	127.5
Slovakia	118.62	133.62	130.25	143.33	142.84	173.43	205.69	201.55	189.13	193.49
Finland	86.38	88.29	86.21	83.02	67.92	76.41	80.67	80.37	90.06	91.61
Sweden	102.88	102.18	92.5	101.48	107.14	97.46	115.91	91.97	107.04	110.43
European Union - 27 countries (from 2020)	<b>108.28</b>	<b>107.27</b>	<b>111.25</b>	<b>112.6</b>	<b>110.36</b>	<b>112.42</b>	<b>126.27</b>	<b>124.54</b>	<b>128.8</b>	<b>127.2</b>

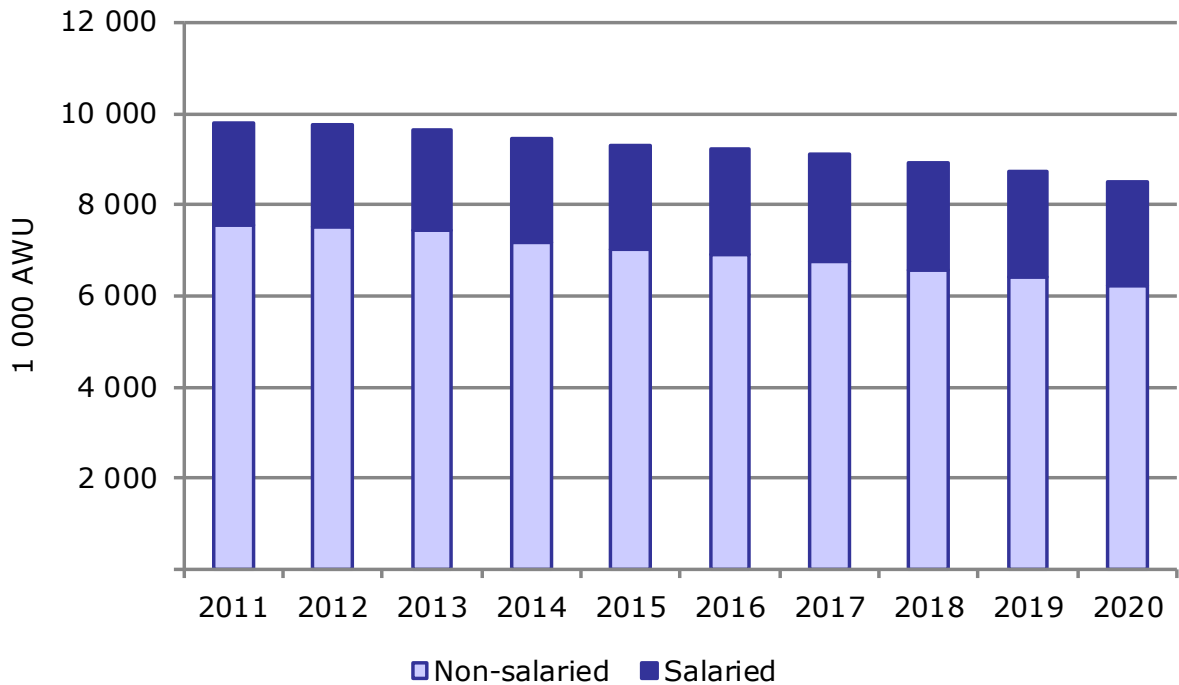
Source: Eurostat(Online Data Table: aact\_eaa06), Economic Accounts for Agriculture

e: Estimations

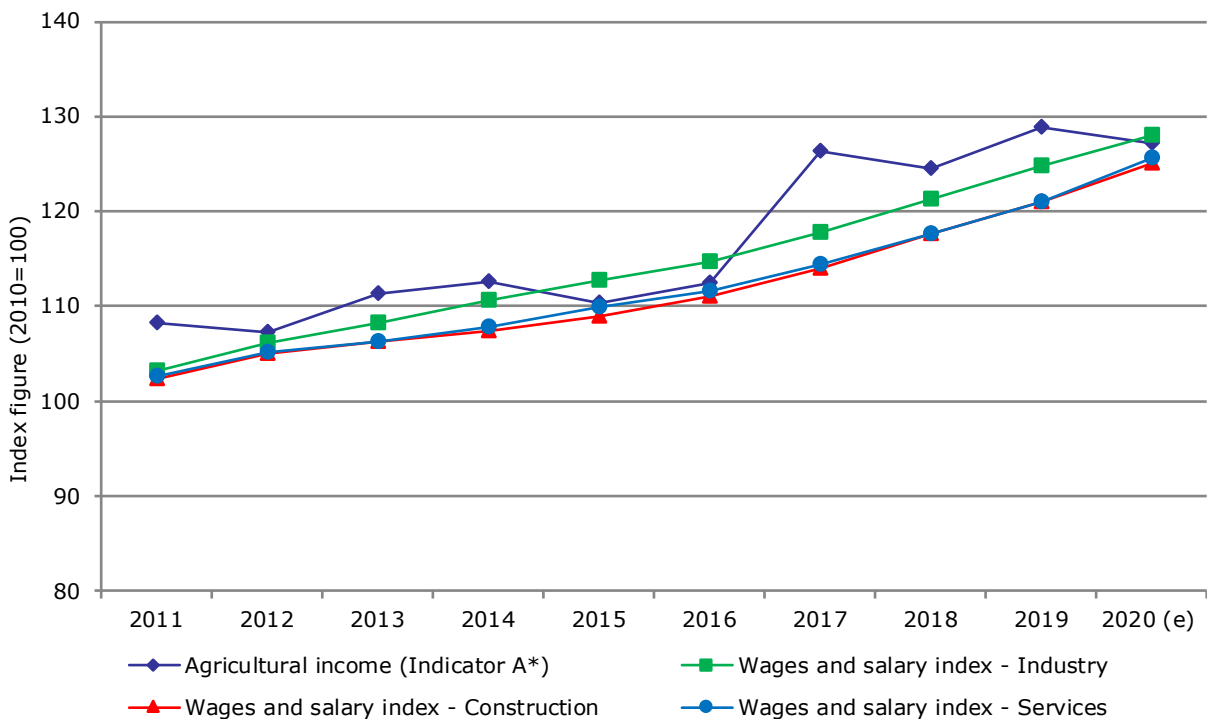
Updated: June 2021

## 3.5. AGRICULTURE: ECONOMIC ACCOUNTS

### Evolution of agricultural labour input



### Evolution of agricultural income compared to wages and salaries in other sectors of the economy



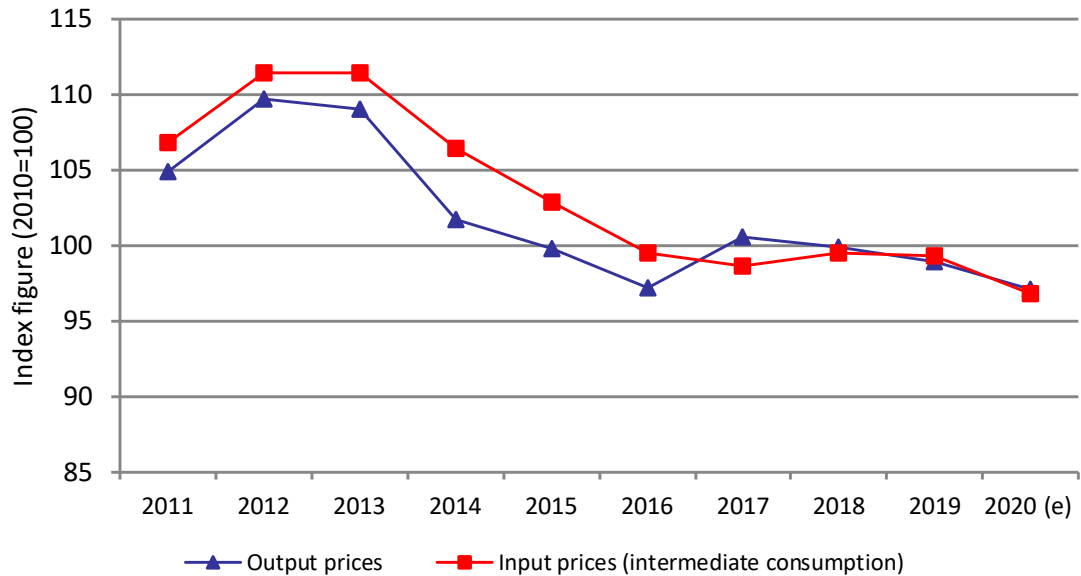
Source: Eurostat(Online Data Table: aact\_ali01, aact\_eaa06)

Updated: June 2021

(\*) Indicator A - see definition on page 12

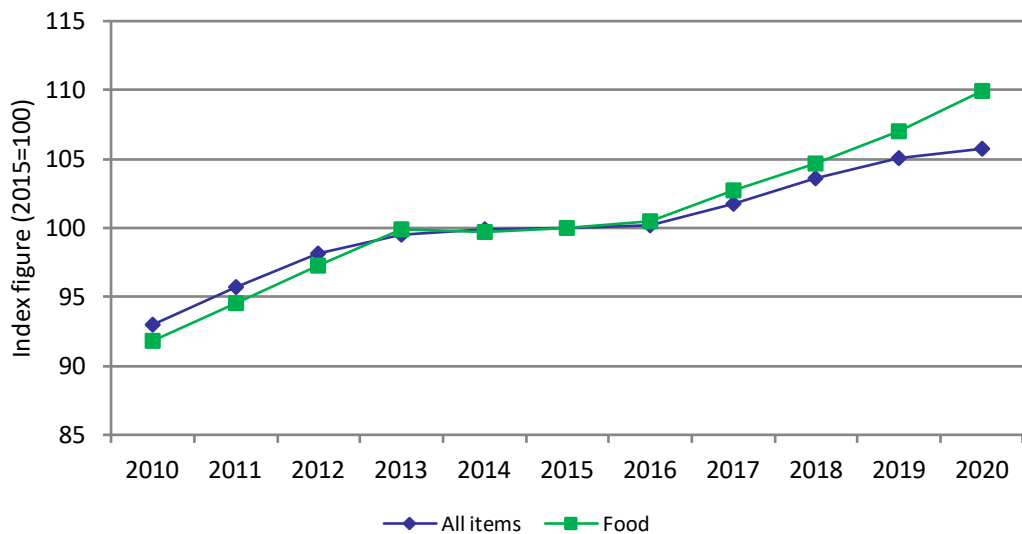
## 3.6. AGRICULTURE: ECONOMIC ACCOUNTS

### Evolution of agricultural input and output prices



Source: Eurostat (Online Data Table: aact\_eaa05)

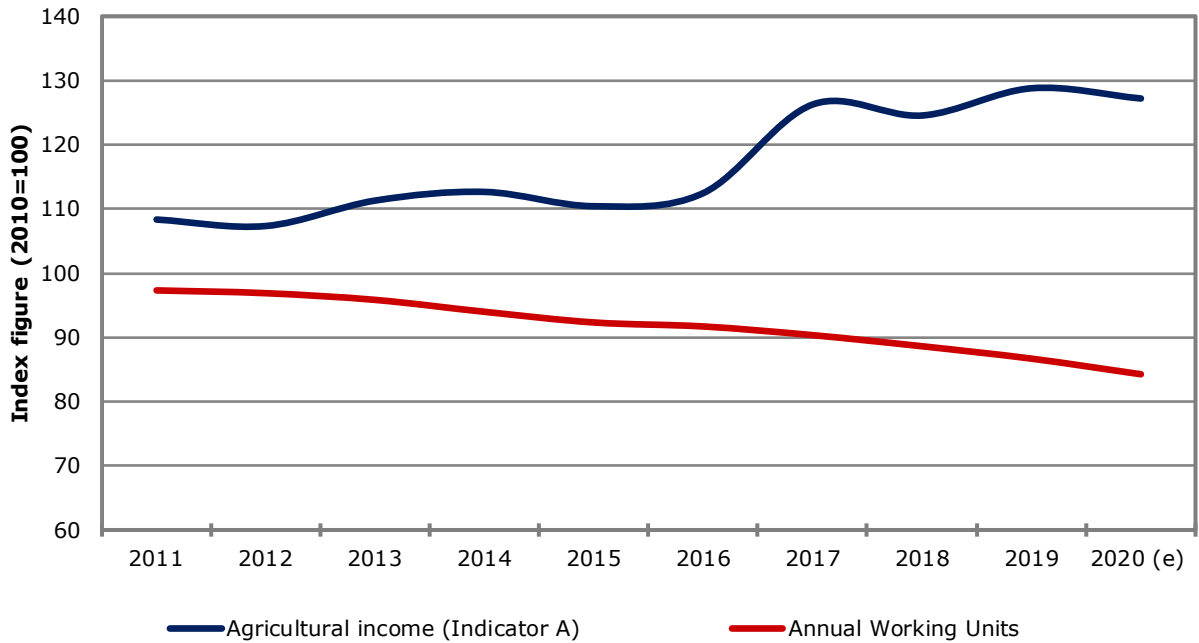
### Evolution of harmonized indices of consumer prices



Source: Eurostat(Online Data Table: prc\_hicp\_aind)

Updated: June 2021

### Farms' income and labour development index

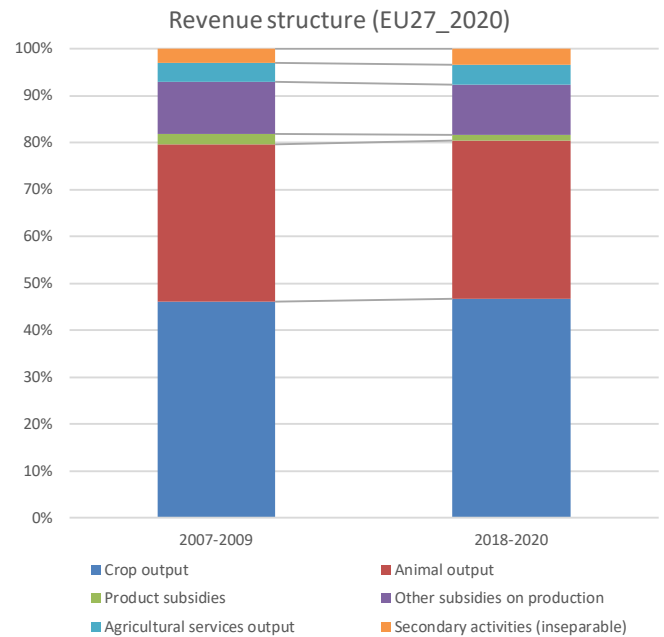
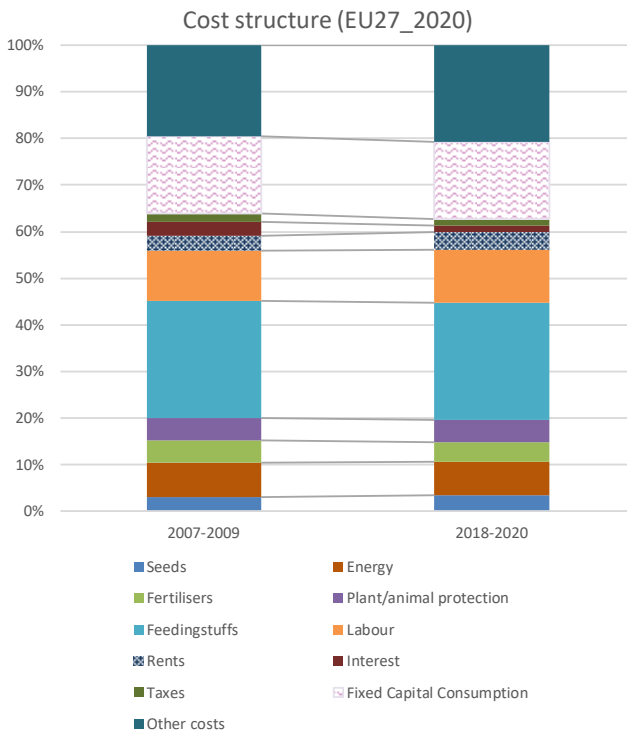
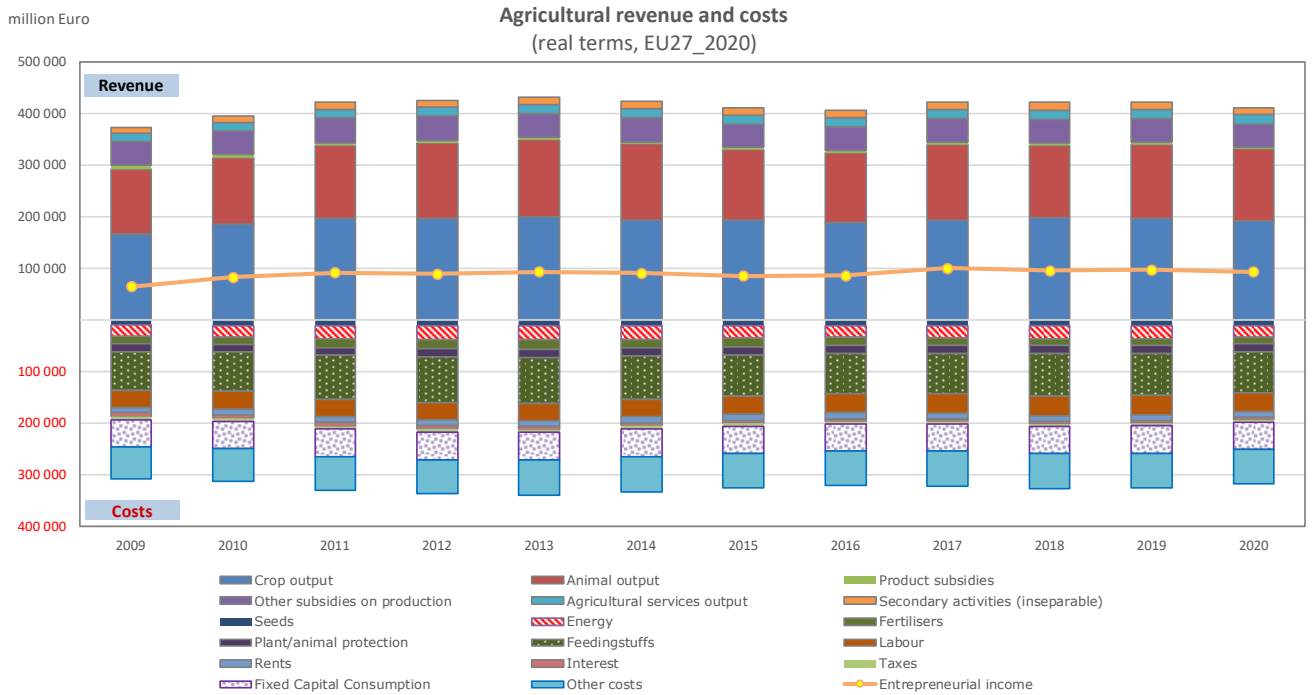


Source: Eurostat (Online Data Table: aact\_eaa06, aact\_ali01)

Updated: June 2021

## 3.8. AGRICULTURE: ECONOMIC ACCOUNTS

### Agricultural income (real terms)





## 4.1. AGRICULTURAL TRADE: EXTERNAL TRADE

### Agriculture trade between EU countries and the rest of the world (external trade)

By category of product	2020		% change 2020/2019
	Million EUR	% of total agricultural products	
<b>Exports</b>			
Commodities	31 271	17.0%	9.1%
Other primary products	38 915	21.1%	6.1%
Processed	38 008	20.6%	-2.2%
Food preparations	42 438	23.0%	3.9%
Beverages	16 178	8.8%	-8.8%
Non Edible	17 565	9.5%	-7.2%
<b>Total agricultural products</b>	<b>184 375</b>	<b>100.0%</b>	<b>1.4%</b>
as % of total exports	9.5%		
<b>Imports</b>			
Commodities	47 303	38.8%	0.6%
Other primary products	32 904	27.0%	1.9%
Processed	12 133	9.9%	0.7%
Food preparations	11 837	9.7%	0.3%
Beverages	4 968	4.1%	-11.6%
Non Edible	12 910	10.6%	0.3%
<b>Total agricultural products</b>	<b>122 055</b>	<b>100.0%</b>	<b>0.3%</b>
as % of total imports	7.1%		
<b>Balance</b>			
Commodities	-16 032		
Other primary products	6 011		
Processed	25 875		
Food preparations	30 601		
Beverages	11 210		
Non Edible	4 655		
<b>Total agricultural products</b>	<b>62 320</b>		

Source: DG Agriculture and Rural Development, based on Comext data.

Updated: June 2021

## 4.2. AGRICULTURAL TRADE: INTRA-EU TRADE

### Evolution of agricultural trade among EU countries (internal trade)

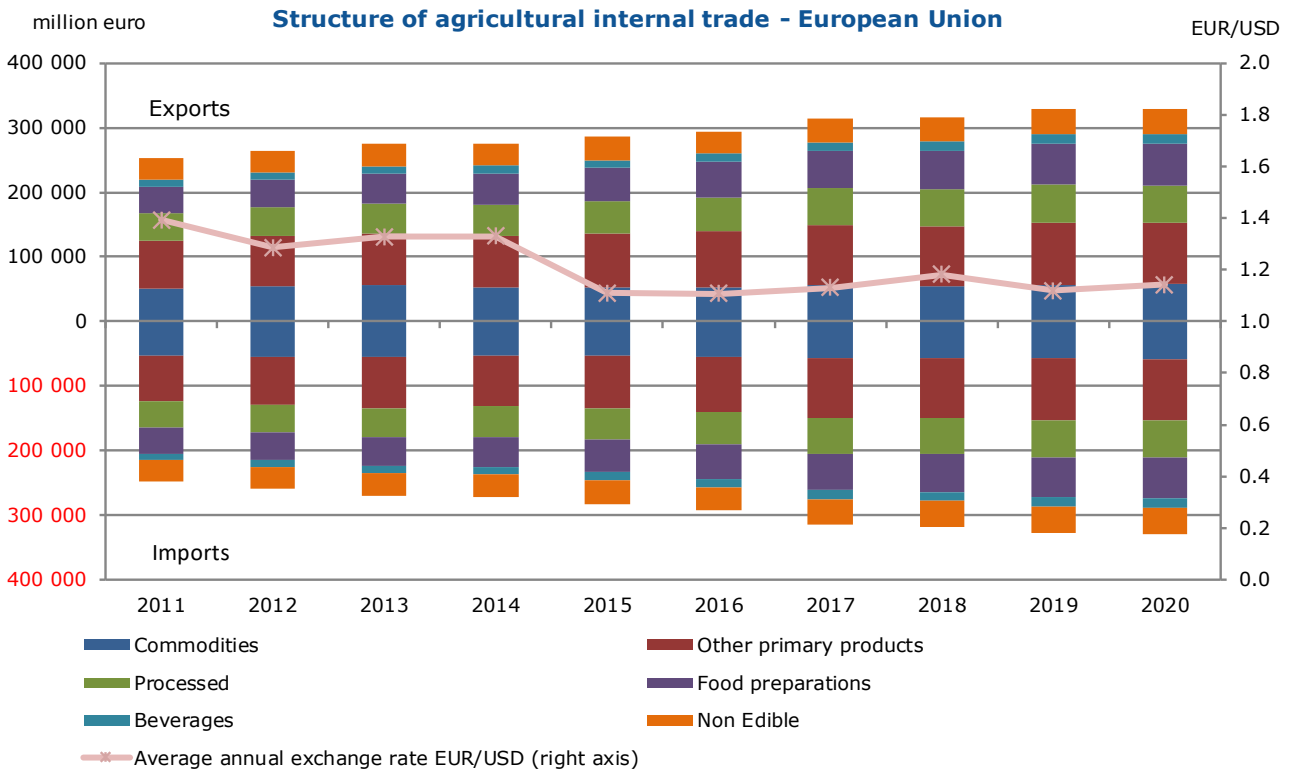
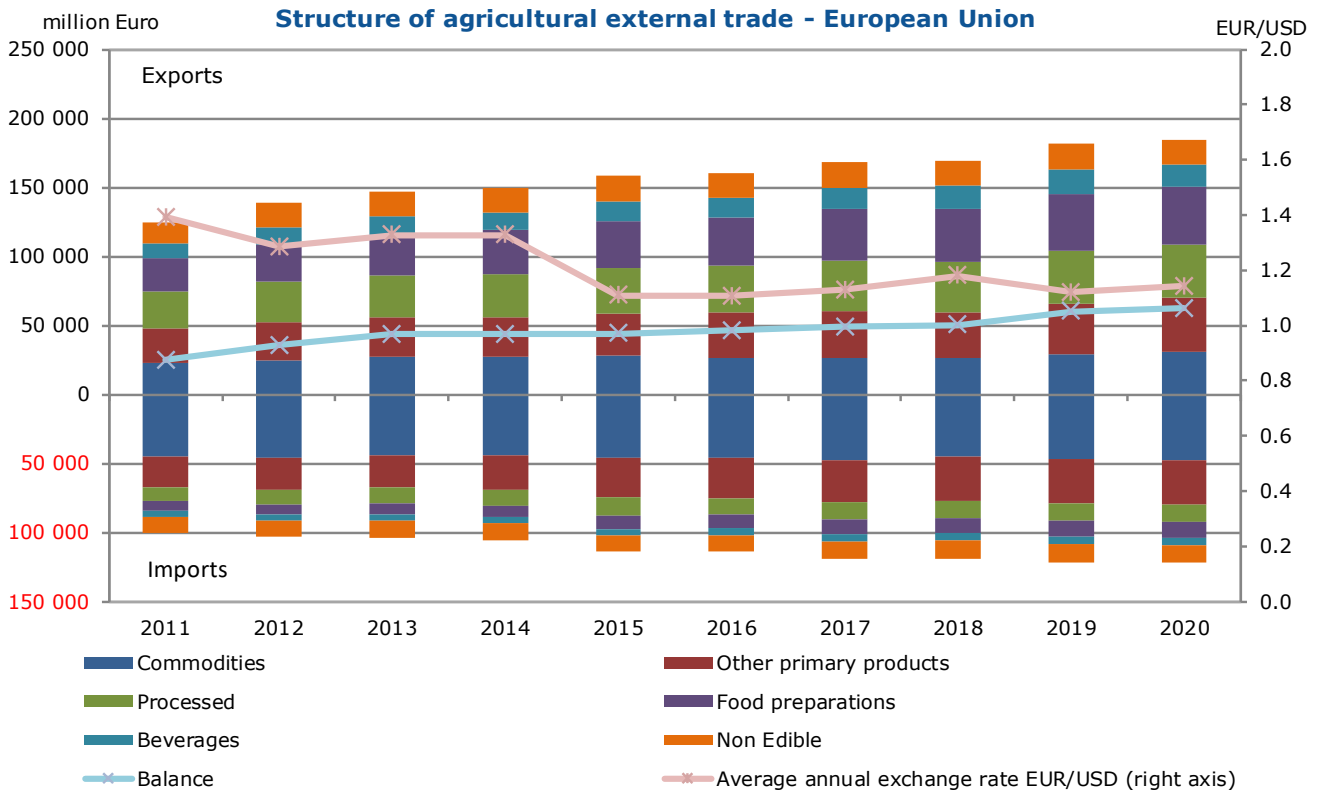
By category of product	2020		% change 2020/2019
	Million EUR	% of total agricultural products	
<b>Exports</b>			
Commodities	58 246	17.7%	4.0%
Other primary products	93 590	28.4%	-2.4%
Processed	59 127	17.9%	-0.6%
Food preparations	64 656	19.6%	2.5%
Beverages	14 745	4.5%	-5.0%
Non Edible	39 388	11.9%	2.3%
<b>Total agricultural products</b>	<b>329 752</b>	<b>100.0%</b>	<b>0.4%</b>
as % of total exports	11.6%		

Source: DG Agriculture and Rural Development, based on Comext data.

Updated: June 2021

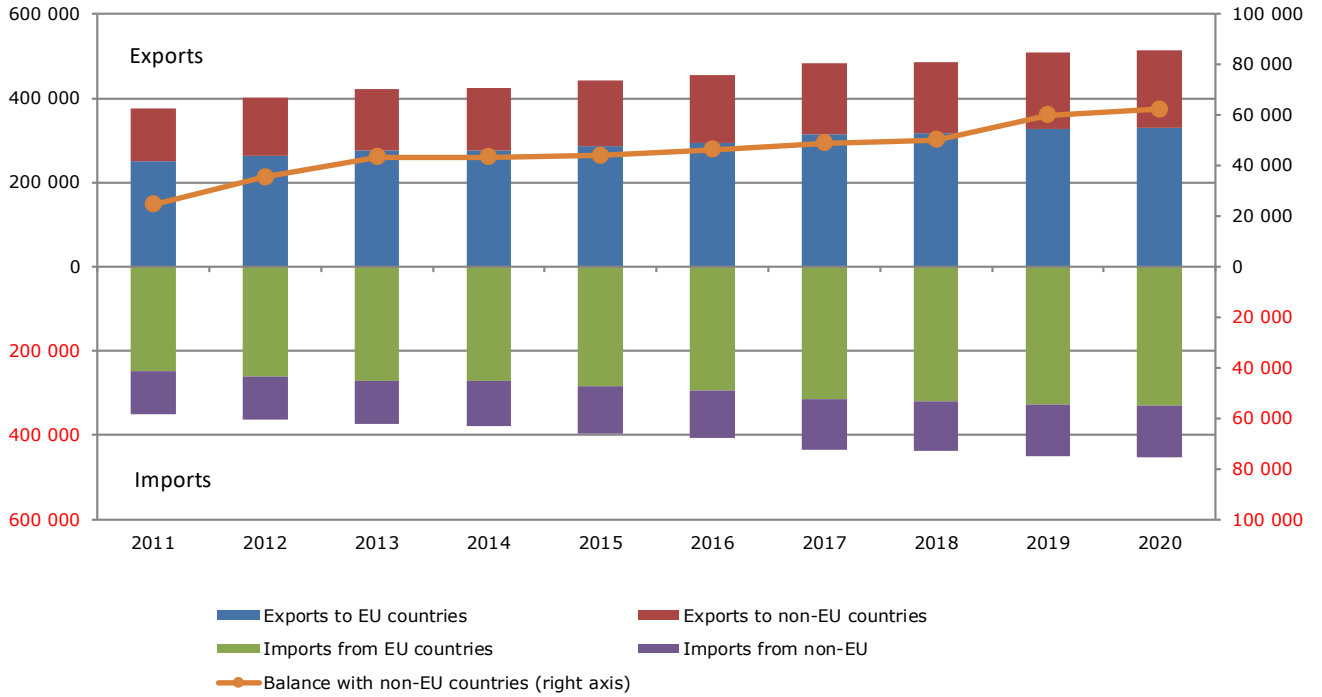
# European Union

## 4.3. AGRICULTURAL TRADE: STRUCTURE



## 4.3. AGRICULTURAL TRADE: STRUCTURE

Evolution of agricultural trade of the EU-27 (in million euro)



## 6.1. FARM STRUCTURE

### Structure of agricultural holdings (EU27\_2020)

Holdings		2007		2010		2013		2016				
		Total	%	Change over previous period	Total	%	Change over previous period	Total	%			
By UAA (*)	< 5 ha	9 664 590	71.2%	-12.3%	8 473 570	70.3%	-15.4%	7 171 860	67.3%	-4.5%	6 848 560	66.6%
	5-10 ha	1 555 000	11.4%	-15.6%	1 311 960	10.9%	-4.7%	1 250 240	11.7%	-0.9%	1 238 580	12.0%
	10-20 ha	972 190	7.2%	-8.7%	888 070	7.4%	-3.2%	859 730	8.1%	-2.5%	838 500	8.2%
	20-30 ha	383 540	2.8%	-4.9%	364 740	3.0%	-2.1%	357 060	3.4%	-3.4%	345 040	3.4%
	30-50 ha	380 330	2.8%	-1.5%	374 700	3.1%	-2.8%	364 310	3.4%	-2.1%	356 620	3.5%
	50-100 ha	359 350	2.6%	0.4%	360 930	3.0%	-1.3%	356 210	3.3%	-1.7%	350 030	3.4%
	> 100 ha	266 860	2.0%	7.4%	286 620	2.4%	3.2%	295 760	2.8%	3.3%	305 380	3.0%
By economic size (**)	< 4 000 €	8 626 810	63.5%	-14.6%	7 371 030	61.1%	-18.6%	6 002 740	56.3%	-5.9%	5 649 210	54.9%
	4 000-7 999 €	1 748 610	12.9%	-13.9%	1 506 090	12.5%	-4.7%	1 435 210	13.5%	-4.3%	1 373 360	13.4%
	8 000-14 999 €	1 023 810	7.5%	-6.5%	957 290	7.9%	-0.9%	949 150	8.9%	-0.4%	945 560	9.2%
	15 000-24 999 €	600 440	4.4%	-2.8%	583 600	4.8%	-1.2%	576 870	5.4%	1.8%	587 330	5.7%
	25 000-49 999 €	595 520	4.4%	1.2%	602 830	5.0%	1.3%	610 960	5.7%	-1.6%	601 100	5.8%
	50 000-99 999 €	440 870	3.2%	0.7%	443 940	3.7%	0.9%	448 140	4.2%	-0.9%	444 130	4.3%
	100 000-249 999 €	363 020	2.7%	6.4%	386 430	3.2%	1.4%	391 920	3.7%	3.1%	404 240	3.9%
	250 000-499 999 €	120 890	0.9%	12.7%	136 270	1.1%	12.4%	153 120	1.4%	12.9%	172 880	1.7%
> 500 000 €	61 920	0.5%	18.2%	73 210	0.6%	19.0%	87 150	0.8%	20.4%	104 940	1.0%	
By LSU (***)	0	5 085 560	37.4%	5.2%	5 349 310	44.4%	-13.8%	4 610 620	43.3%	3.2%	4 756 260	46.3%
	0-5	6 484 440	47.7%	-23.7%	4 945 620	41.0%	-10.2%	4 439 310	41.7%	-9.7%	4 009 010	39.0%
	5-10	612 590	4.5%	-21.8%	479 180	4.0%	-14.1%	411 490	3.9%	-10.8%	367 070	3.6%
	10-15	267 300	2.0%	-14.4%	228 680	1.9%	-10.0%	205 700	1.9%	-7.6%	190 040	1.8%
	15-20	172 190	1.3%	-11.8%	151 800	1.3%	-9.9%	136 820	1.3%	-4.5%	130 600	1.3%
	20-50	460 780	3.4%	-8.5%	421 770	3.5%	-7.3%	390 770	3.7%	-5.0%	371 190	3.6%
	50-100	254 490	1.9%	-8.7%	232 320	1.9%	-8.4%	212 800	2.0%	-4.8%	202 520	2.0%
	100-500	218 720	1.6%	2.0%	223 160	1.9%	-2.2%	218 300	2.0%	2.8%	224 480	2.2%
	> 500	25 750	0.2%	11.8%	28 780	0.2%	2.3%	29 440	0.3%	7.1%	31 530	0.3%
By age of holder	< 35 years	851 820	5.1%	6.3%	905 300	7.5%	-29.6%	637 220	6.0%	-17.2%	527 690	5.1%
	35-44 years	2 053 710	14.0%	-2.3%	2 006 440	16.6%	-18.6%	1 634 190	15.3%	-11.6%	1 443 970	14.0%
	45-54 years	3 097 940	22.9%	-11.6%	2 739 370	22.7%	-10.9%	2 440 770	22.9%	-3.5%	2 354 750	22.9%
	55-64 years	3 067 230	25.0%	-7.7%	2 831 070	23.5%	-7.0%	2 632 560	24.7%	-2.4%	2 569 730	25.0%
	> 64 years	4 464 940	32.8%	-19.9%	3 578 460	29.7%	-7.5%	3 310 500	31.1%	1.9%	3 372 920	32.8%
<b>Total</b>	<b>13 581 820</b>		<b>-11.2%</b>	<b>12 060 500</b>		<b>-11.7%</b>	<b>10 655 250</b>		<b>-3.5%</b>	<b>10 282 700</b>		
UAA (ha)	157 377 190		1.0%	158 963 800		-1.1%	157 286 910		-0.4%	156 665 280		
average farm size (ha UAA per holding)	12.6		4.8%	13.2		12.0%	14.8		3.2%	15.2		

Source: Eurostat (Online Data Table: ef\_m\_farmleg), Farm Structure Survey 2010, 2013 and 2016.

Approximately 1/3 of the reported farms number change between years 2007 and 2016 is due to the change of statistical survey threshold or coverage in Member States, in particular for Czechia, Germany, Greece, Poland and Slovakia (2010), Italy (2013).

Updated: June 2021

(\*) UAA = Utilized agricultural area.

(\*\*) Economic size: The standard output of an agricultural product (crop or livestock), abbreviated as SO, is the average monetary value of the agricultural output at farm-gate price, in euro per hectare or per head of livestock. There is a regional SO coefficient for each product, as an average value over a reference period. The sum of all the SO per hectare of crop and per head of livestock in a farm is a measure of its overall economic size, expressed in euro.

(\*\*\*) LSU = Livestock units. A LSU is equivalent to a dairy cow. The number of animals (heads) is converted into LSU using a set of coefficients reflecting the feed requirements of the different animal categories.

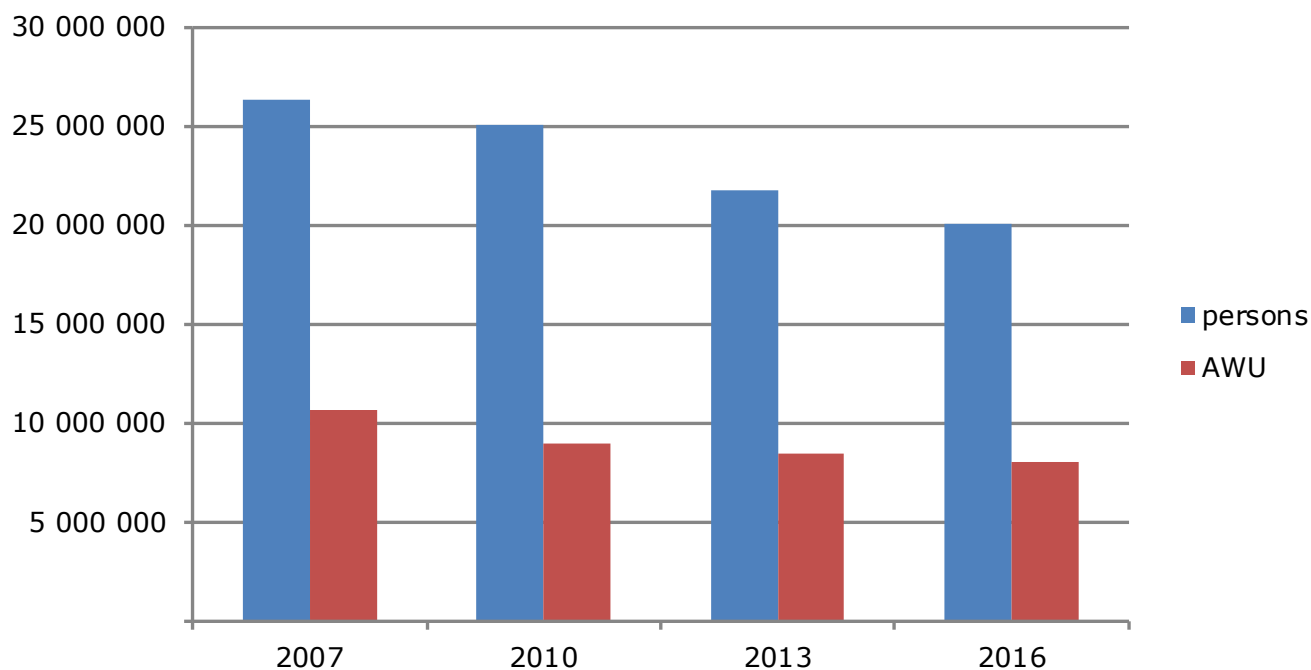
## 6.2. FARM STRUCTURE

### Structure of the farm labour force

	Holders	Members of the holder's family	total family labour force	Regular non family labour force	Non regular non family labour force	total non-family labour force
<b>2013</b>						
persons:	10 224 920	9 653 350	<b>19 878 250</b>	1 895 780	Data not available	
of which women:	30.2%	57.7%	<b>43.6%</b>	35.4%		
AWUs (*):	4 079 610	3 009 490	<b>7 089 110</b>	1 386 640	756 090	<b>2 142 730</b>
<b>2016</b>						
persons:	9 860 600	8 126 560	<b>17 987 160</b>	2 040 380	Data not available	
of which women:	30.7%	55.0%	<b>41.7%</b>	26.5%		
AWUs:	4 005 020	2 644 290	<b>6 649 310</b>	1 482 070	778 620	<b>2 260 690</b>
<b>Total farm labour force (persons)</b>			<b>2016</b>	20 046 160		
<b>Total farm labour force (AWUs)</b>			<b>2016</b>	8 826 310		

\* AWUs = Annual work units. An AWU is equivalent to a worker employed on a full time basis for one year.

### Evolution of the regular agricultural labour force



## 6.3. FARM STRUCTURE

### Livestock and holdings with livestock in 2016

	Livestock unit (LSU)	Head (animal)	Thousand heads (animals)	Holding*	Percent structure	
					Livestock unit (LSU)	Holding*
<b>Livestock</b>	<b>118 088 610</b>	<b>:</b>	<b>:</b>	<b>5 595 490</b>	<b>100%</b>	<b>100%</b>
Live horses, asses, mules and hinnies	2 086 930	2 608 670	:	671 270	2%	12%
Live bovine animals	57 456 670	79 389 640	:	1 927 580	49%	34%
Live swine	31 917 320	138 990 420	:	1 955 630	27%	35%
Live sheep	6 331 000	63 310 140	:	715 950	5%	13%
Live goats	1 139 850	11 398 420	:	378 950	1%	7%
Live poultry	19 083 400	:	1 549 670	3 972 850	16%	71%
Rabbits, breeding females	73 420	3 670 760	:	236 430	0%	4%
Bees (hives)	:	7 022 700	:	146 170	:	3%
Other animals	:	:	:	45 440	:	1%

\*note that holdings can keep various animals at the same time so the number of holdings with "Livestock" is less than the sum of groups of holdings with particular animals

### Number of holdings with livestock herds by size class of livestock units, in 2016

ANIMALS/holdings*	Less than 5 LSU	From 5 to 9.9 LSU	From 10 to 14.9 LSU	From 15 to 19.9 LSU	From 20 to 49.9 LSU	From 50 to 99.9 LSU	From 100 to 499.9 LSU	500 LSU or over
<b>Livestock</b>	<b>4 009 010</b>	<b>367 070</b>	<b>190 040</b>	<b>130 600</b>	<b>371 190</b>	<b>202 520</b>	<b>224 480</b>	<b>31 530</b>
Live horses, asses, mules and hinnies	397 930	94 750	38 860	24 940	62 250	26 750	23 830	1 940
Live bovine animals	795 960	262 320	138 270	96 960	286 480	167 610	169 390	10 660
Live swine	1 537 460	142 970	57 580	34 560	80 950	32 460	52 120	17 540
Live sheep	369 150	97 560	51 980	34 950	93 710	40 400	26 530	1 700
Live goats	242 020	38 910	20 990	14 620	38 390	15 020	8 600	490
Live poultry	3 460 910	193 290	78 400	47 770	107 010	36 070	38 930	10 500
Rabbits, breeding females	193 800	17 950	7 010	3 960	8 630	3 010	1 920	100

\*note that holdings can keep various animals at the same time so the number of holdings with "Livestock" is less than the sum of groups of holdings with particular animals

### Number of livestock units in livestock herds by size classes of livestock units, in 2016

ANIMALS/LSU	Less than 5 LSU	From 5 to 9.9 LSU	From 10 to 14.9 LSU	From 15 to 19.9 LSU	From 20 to 49.9 LSU	From 50 to 99.9 LSU	From 100 to 499.9 LSU	500 LSU or over
<b>Livestock</b>	<b>4 283 520</b>	<b>2 602 150</b>	<b>2 322 790</b>	<b>2 256 340</b>	<b>11 832 220</b>	<b>14 373 240</b>	<b>44 007 670</b>	<b>36 410 690</b>
Live horses, asses, mules and hinnies	488 140	252 970	166 560	141 550	514 060	258 920	202 990	37 470
Live bovine animals	1 468 250	1 460 050	1 401 200	1 427 720	8 099 390	10 930 850	27 137 550	5 531 390
Live swine	767 480	303 090	221 870	181 780	787 540	1 049 830	9 779 280	18 823 280
Live sheep	392 480	388 910	393 000	389 260	1 837 800	1 429 280	1 373 630	126 510
Live goats	123 380	83 330	81 010	75 060	372 200	224 430	166 220	13 410
Live poultry	1 023 300	107 830	52 980	35 890	206 750	469 920	5 337 840	11 801 260
Rabbits, breeding females	20 440	5 930	6 020	3 910	14 440	9 800	7 240	740

Source: Eurostat online data tables ef\_m\_farmleg, ef\_lsk\_main.

Updated: September 2021

The data extracted in June 2021, for the most recent data see sources

This document does not necessarily represent the official views of the European Commission  
© European Union, 2021 - Reproduction authorised provided the source is acknowledged

Contact: DG Agriculture and Rural Development, Farm Economics Unit

Tel: +32-2-29 75471 / E-mail: [Agri-C3@ec.europa.eu](mailto:Agri-C3@ec.europa.eu)