

#EU  
AgriFood  
Days

# AGRICULTURAL OUTLOOK

*Sowing the Future of EU Agriculture*



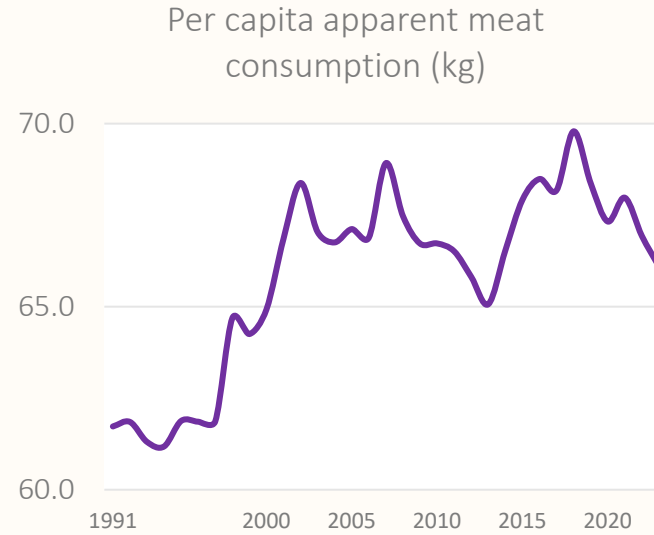
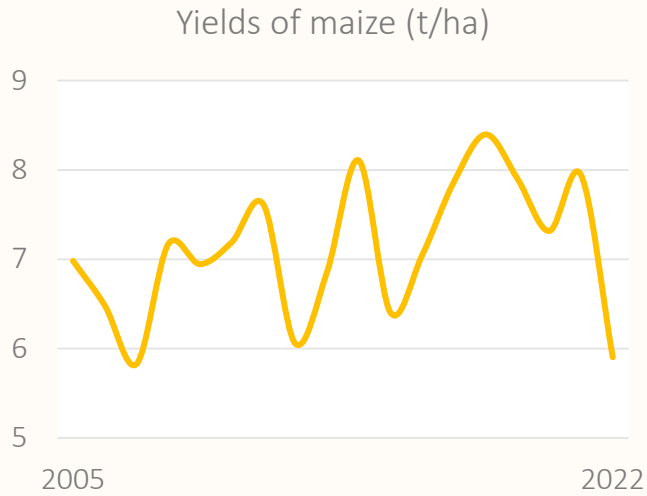
Where we are, where we are heading to?  
Presentation of the 2023 Medium-term Outlook report



European  
Commission



# What trends could we observe?



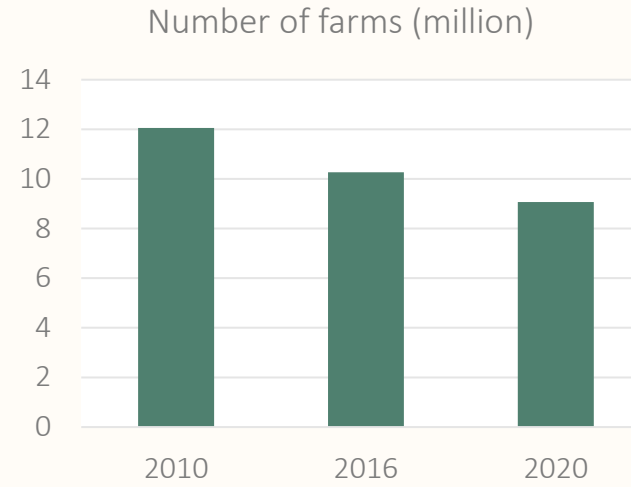
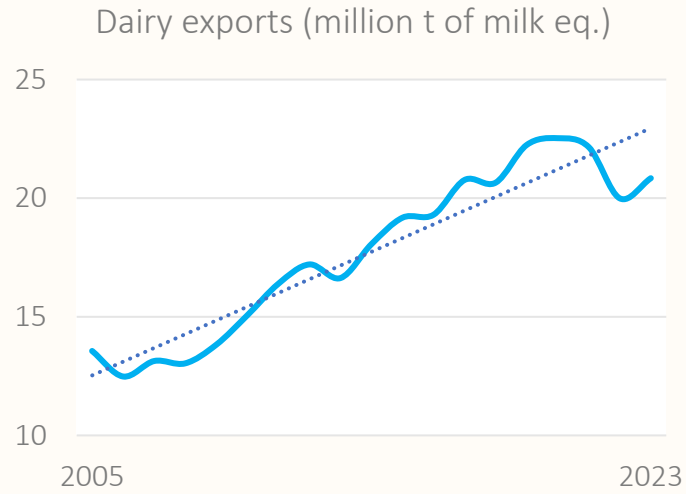
Frequent and more severe impacts of climate change

Changing consumer preferences, concerns and habits





# What trends could we observe?



Dynamically changing global trade and macroeconomic environment

Evolving structure of EU farming sector



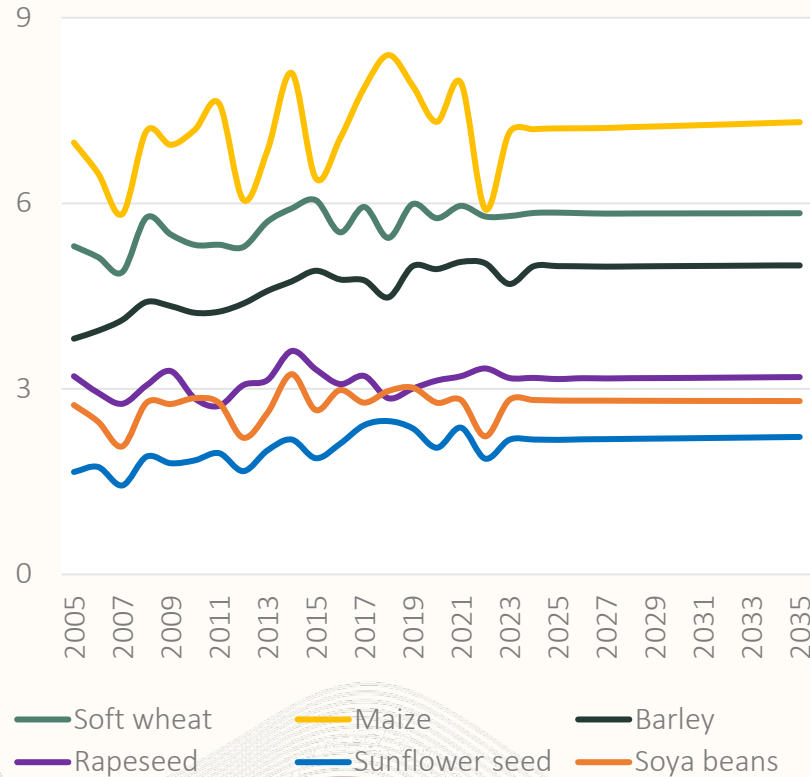
# How could EU crop production change?



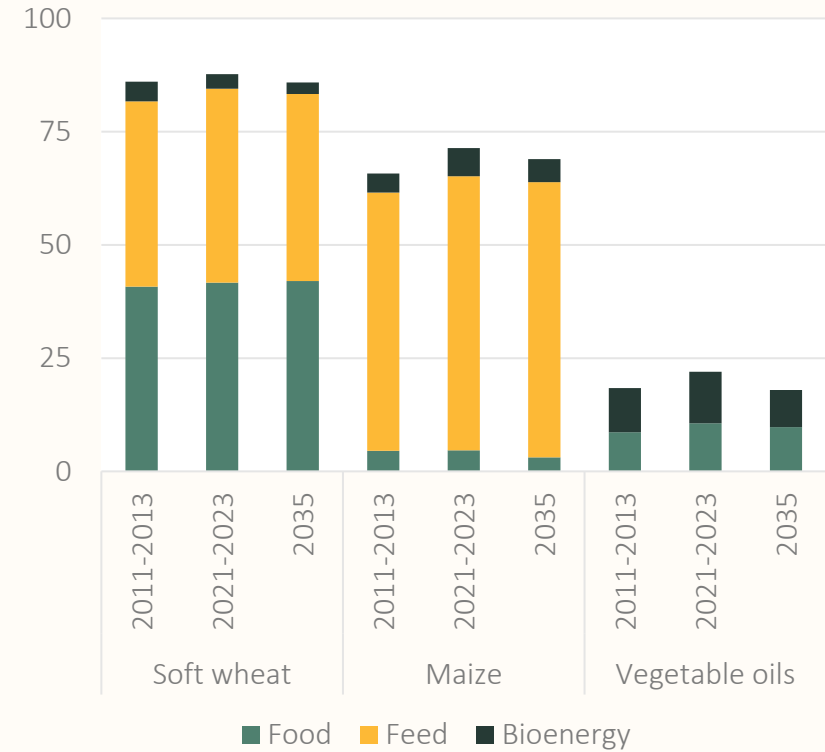


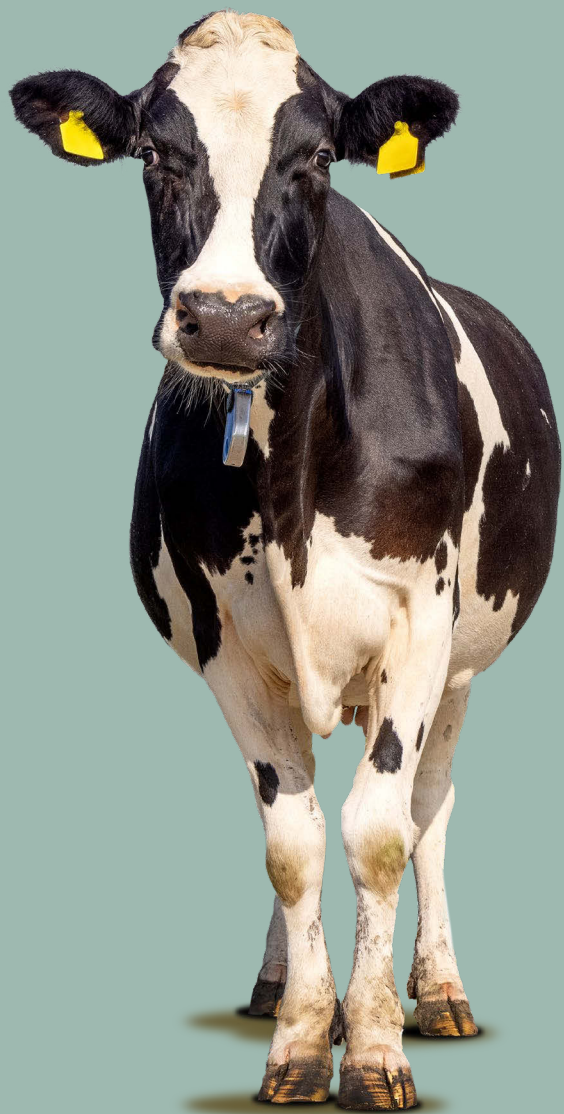
# Changing productivity and demand patterns

Average yields of selected crops (t/ha)



Uses of selected crops/products (million t)



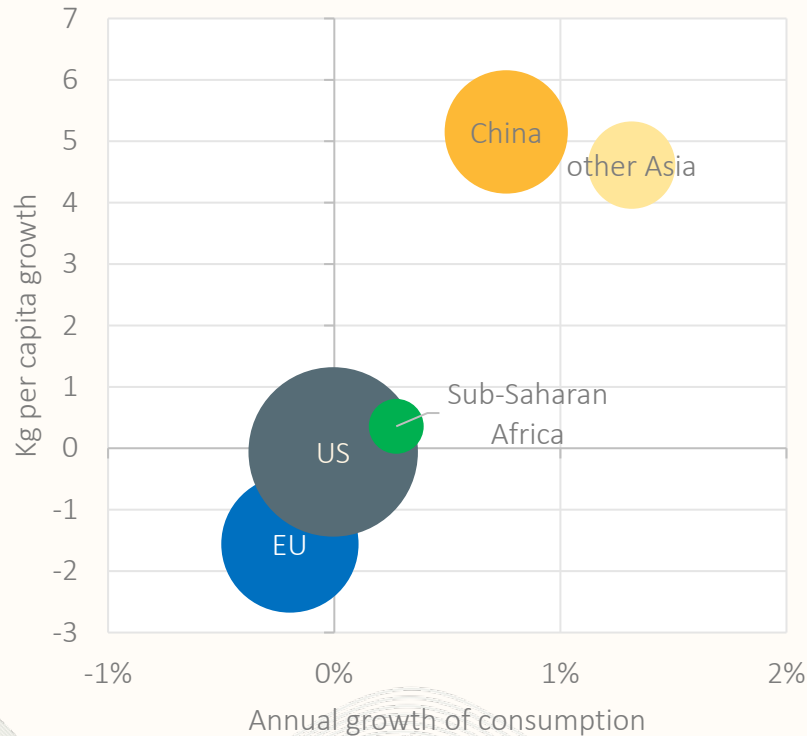


How could EU demand  
for animal products  
evolve?

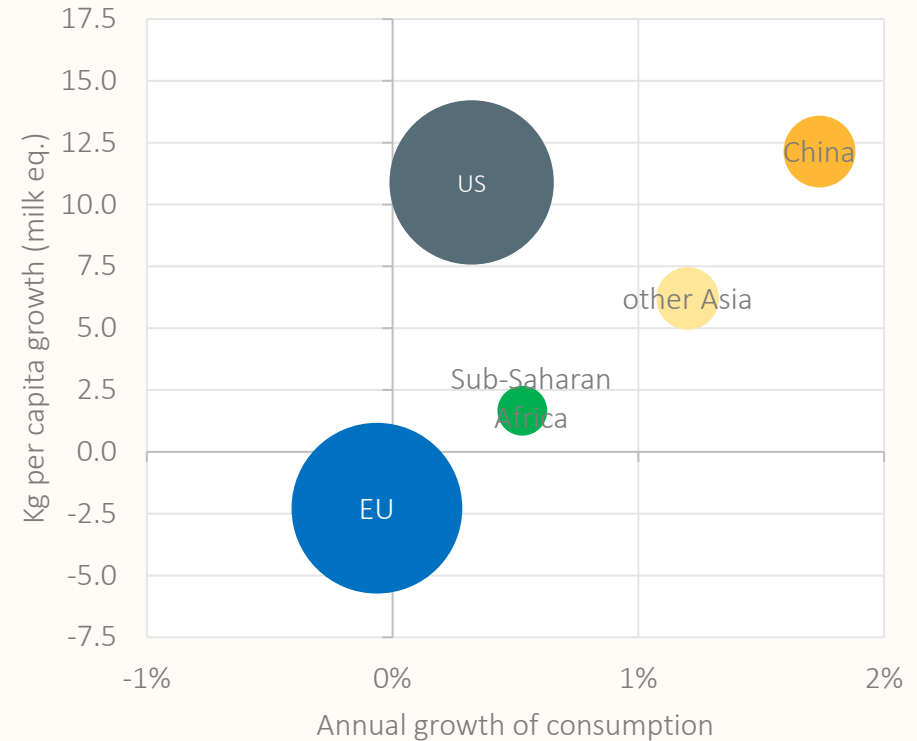


# Mature EU consumption compared to other markets

*Meat per capita consumption*



*Dairy per capita consumption*



\*Sizes of bubbles correspond to per capita consumption in 2021-2023  
 \*\* other Asia represent Asian countries except China and Japan



# What about EU trade?

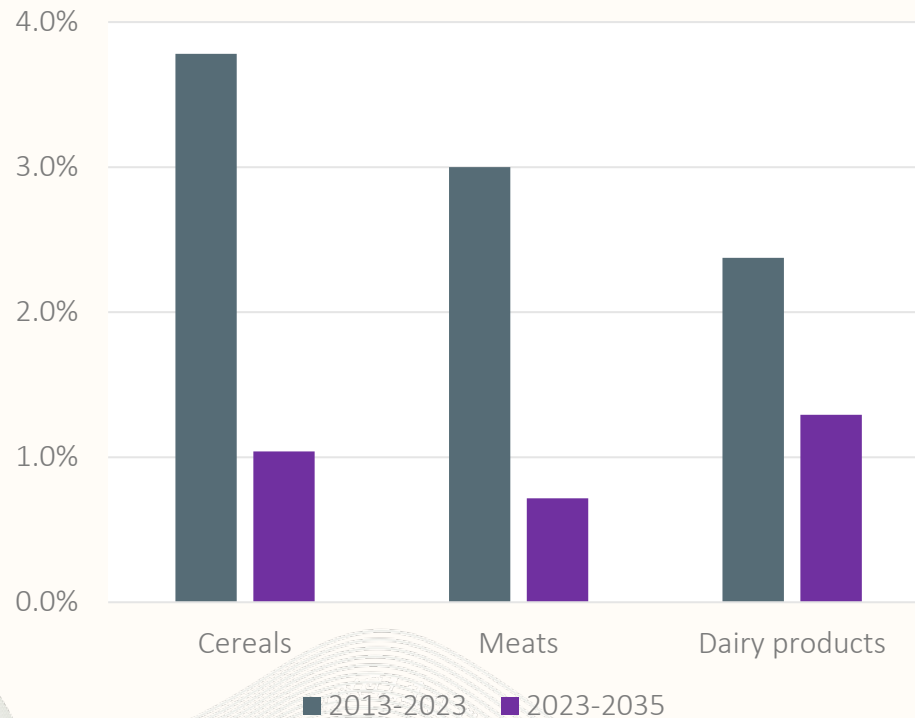




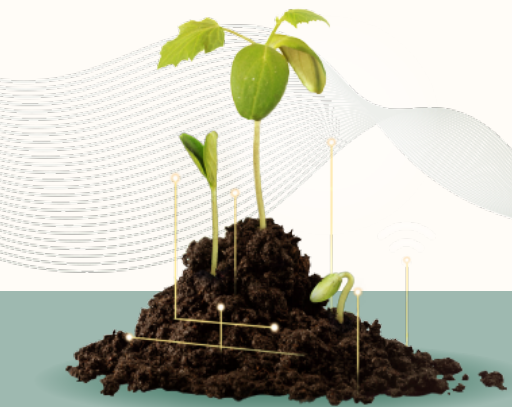
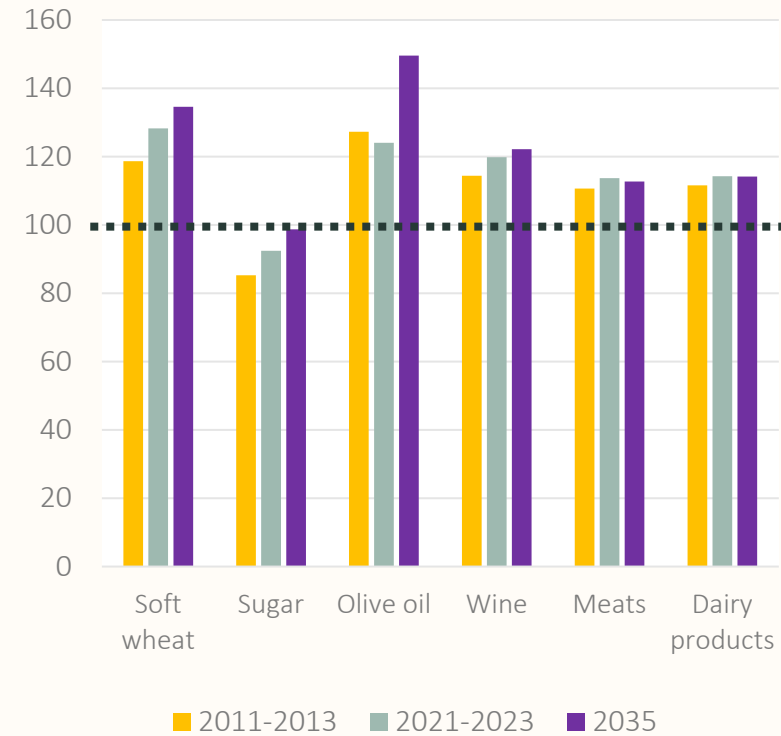


# EU continues contributing to global food demand

*Annual change in global imports of selected agricultural commodities*



*Self-sufficiency rates of selected agricultural commodities (%)*



#EU  
AgriFood  
Days

# AGRICULTURAL OUTLOOK

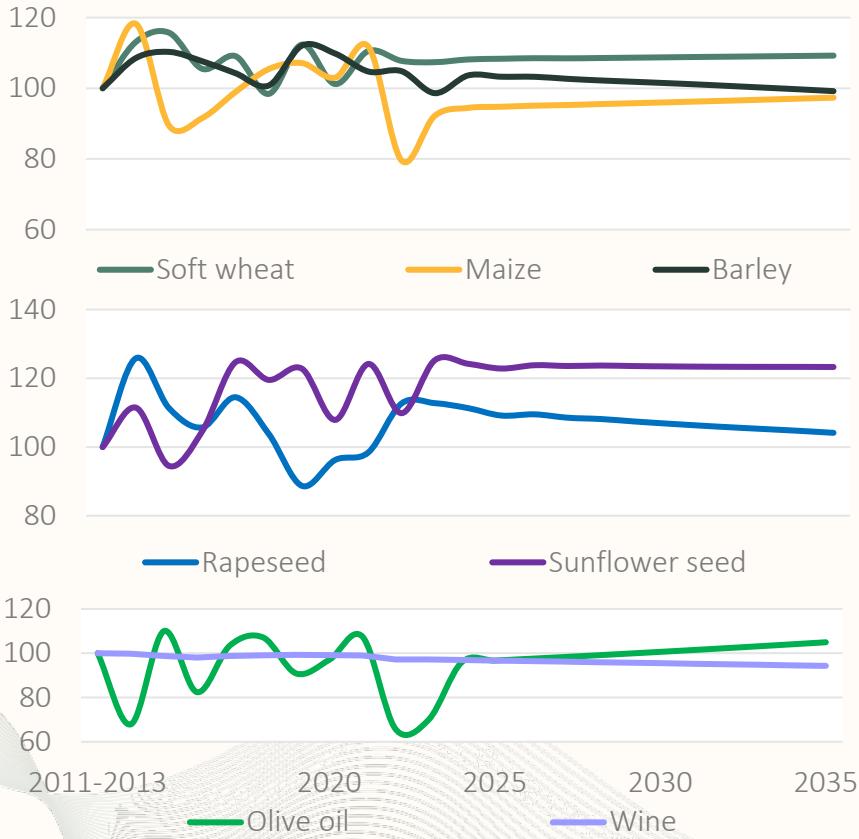
*Sowing the Future of EU Agriculture*



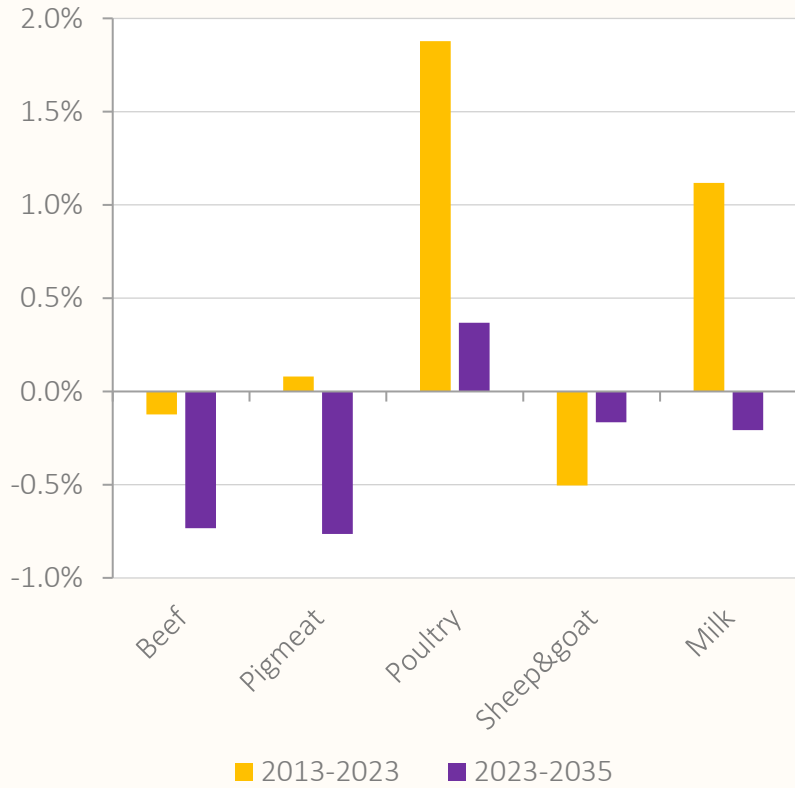


# Production copes with challenges while embraces opportunities

*Trends in crop production  
(2011-2013=100)*



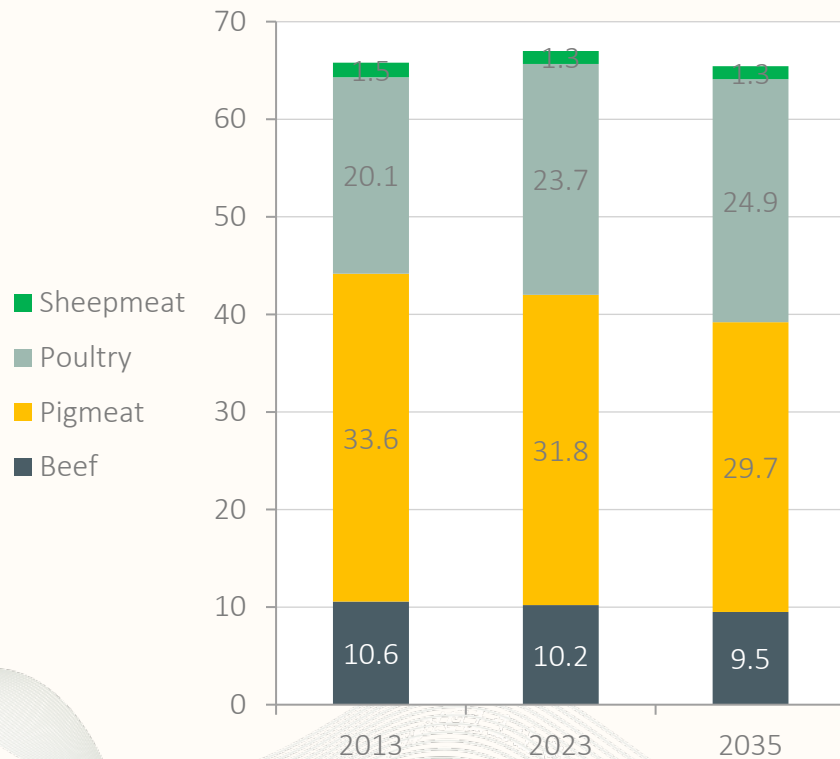
*Trends in animal production  
(2011-2013=100)*



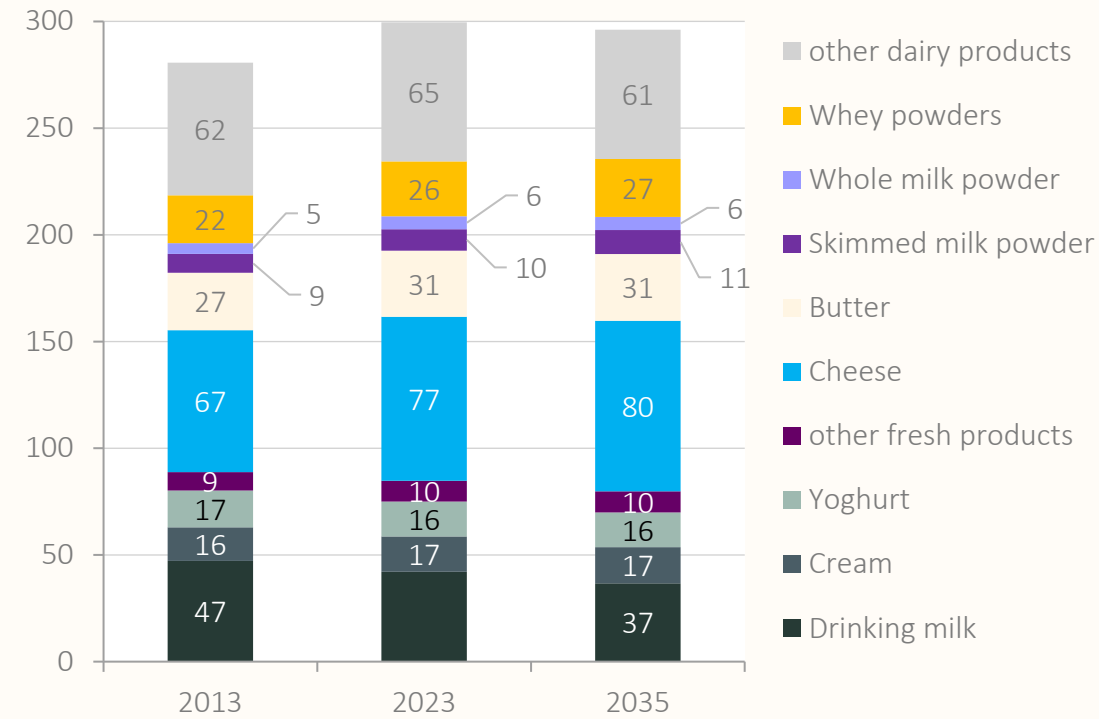


# Differentiation of demand reflects consumer habits and concerns

Per capita meat consumption (kg)



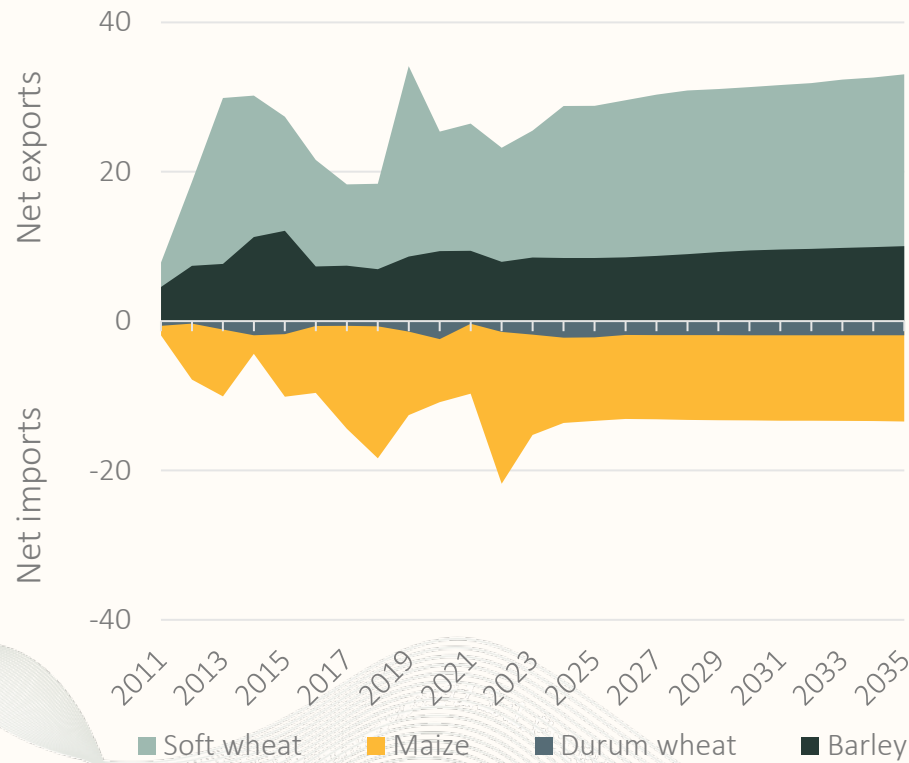
Per capita consumption of dairy products (kg of milk equivalent)





# Further trade opportunities for the EU

Net trade of cereals (million t)



Exports of meats by type (1 000 t)

