



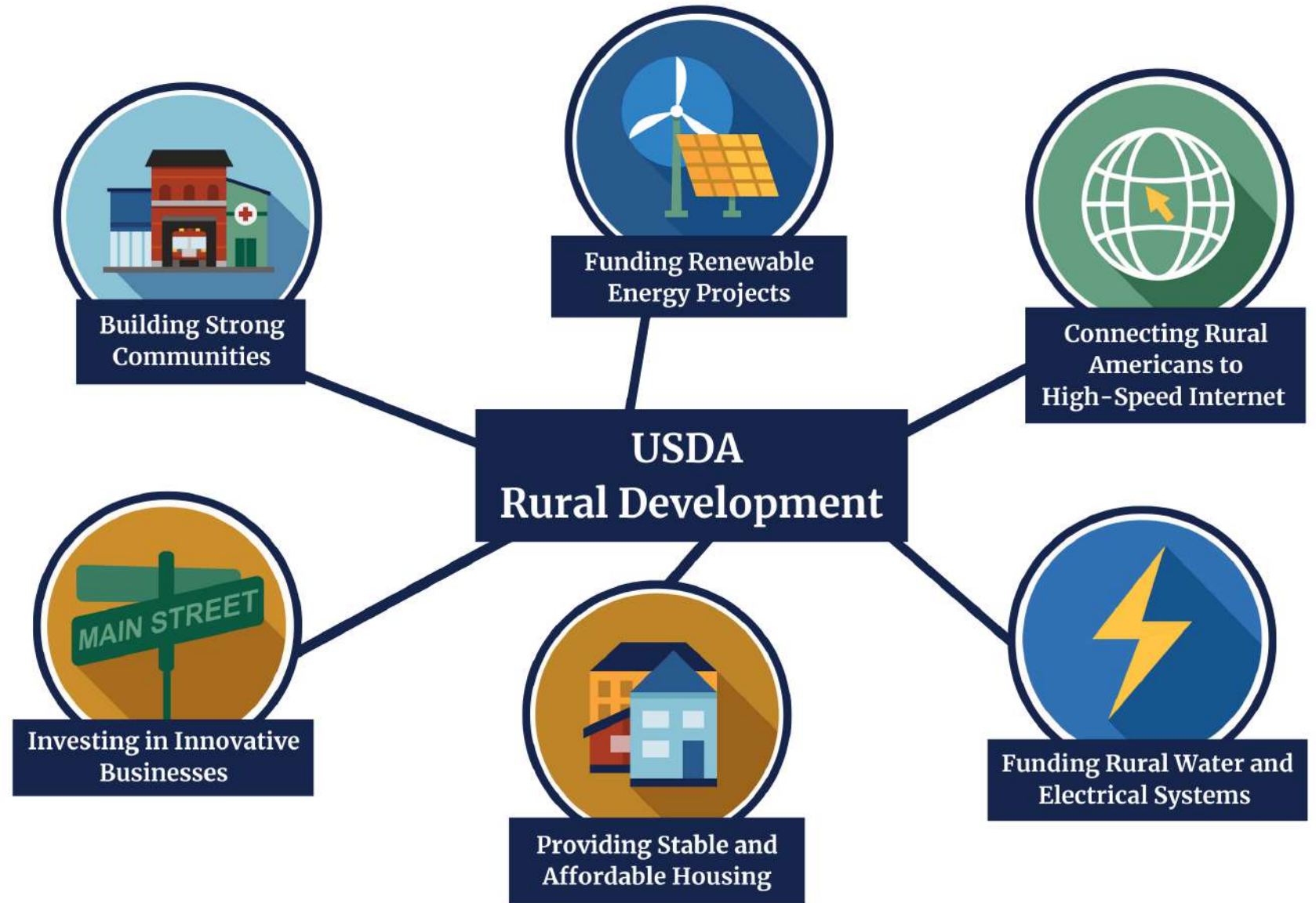
USDA Rural Development Overview

Presented by Sarah Dietch

Chief of Staff, Rural Development

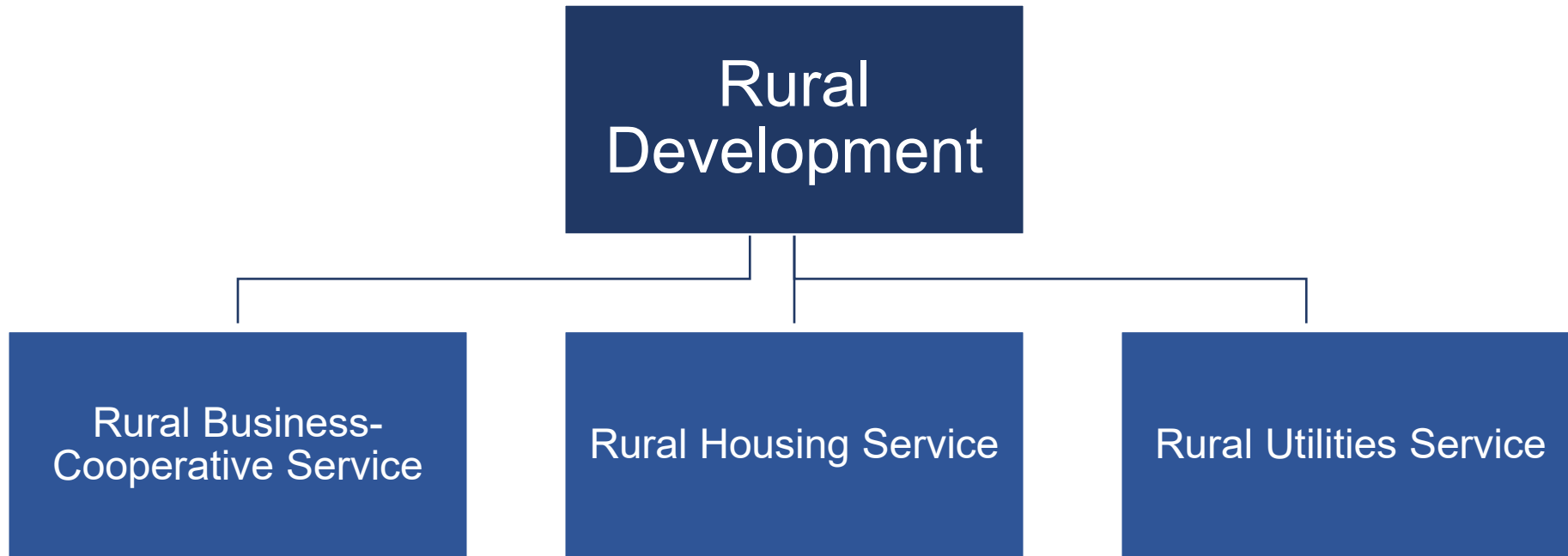
USDA Rural Development

Together, America
Prosper



Our programs help rural people thrive and when rural people thrive, America thrives.

Rural Development Offices

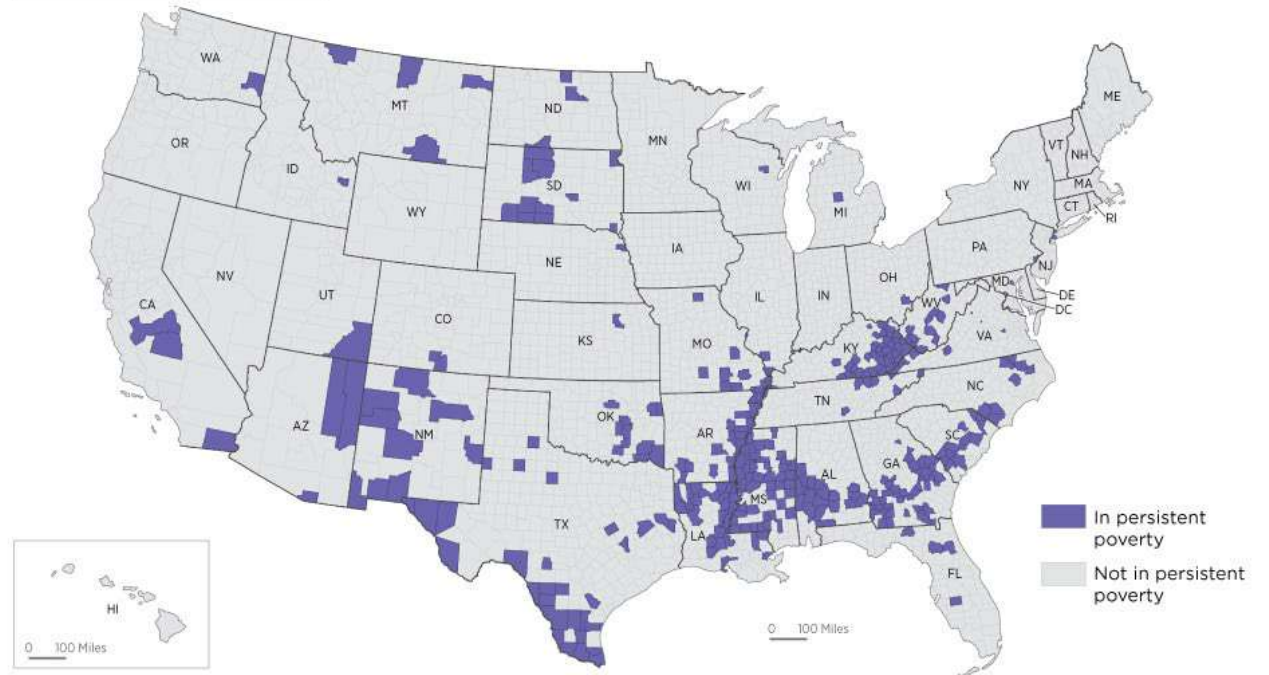


Landscape of Rural America

- **U.S. is a vast and socially and geographically diverse nation.**
 - Third-largest land area.
 - Third-largest population.
- **Rural America is not monolithic.**
 - Scopes of action must vary according to location.
 - People need to be reached where they are.



Figure 1.
Counties in Persistent Poverty: 1989 to 2015-2019



Source: U.S. Census Bureau, 1990 and 2000 Censuses and 2005-2009 and 2015-2019 American Community Survey, 5-year estimates.



Key Considerations

The landscape of rural America has changed.

- 40% of farmers are small or mid-sized.
- Over 50% have negative income.
- Farmers are unable to make ends meet.
- Additional non-farming incomes required.

Rural Communities are no longer agriculture-based.

- Only 1 out of 5 rural jobs are now ag-based.
- Small towns and formerly ag-based communities require new income streams.
- Producers need access to new markets (bioproducts, fertilizer, biofuels) and supply chains.

RD Mission and Priorities

- Ensure USDA programs are delivered efficiently, effectively, and with integrity and a focus on customer service.
- Facilitate rural prosperity and economic development.

Rural Development: Key Priorities | Rural Development (usda.gov)

- **Addressing Climate Change and Environmental Justice**
Reducing climate pollution and increasing resilience to the impacts of climate change through economic support to rural communities.
- **Advancing Racial Justice, Place-Based Equity, and Opportunity**
Ensuring all rural residents have equitable access to RD programs and benefits from RD funded projects.
- **Creating More and Better Market Opportunities**
Assisting rural communities recover economically through more and better market opportunities and through improved infrastructure.

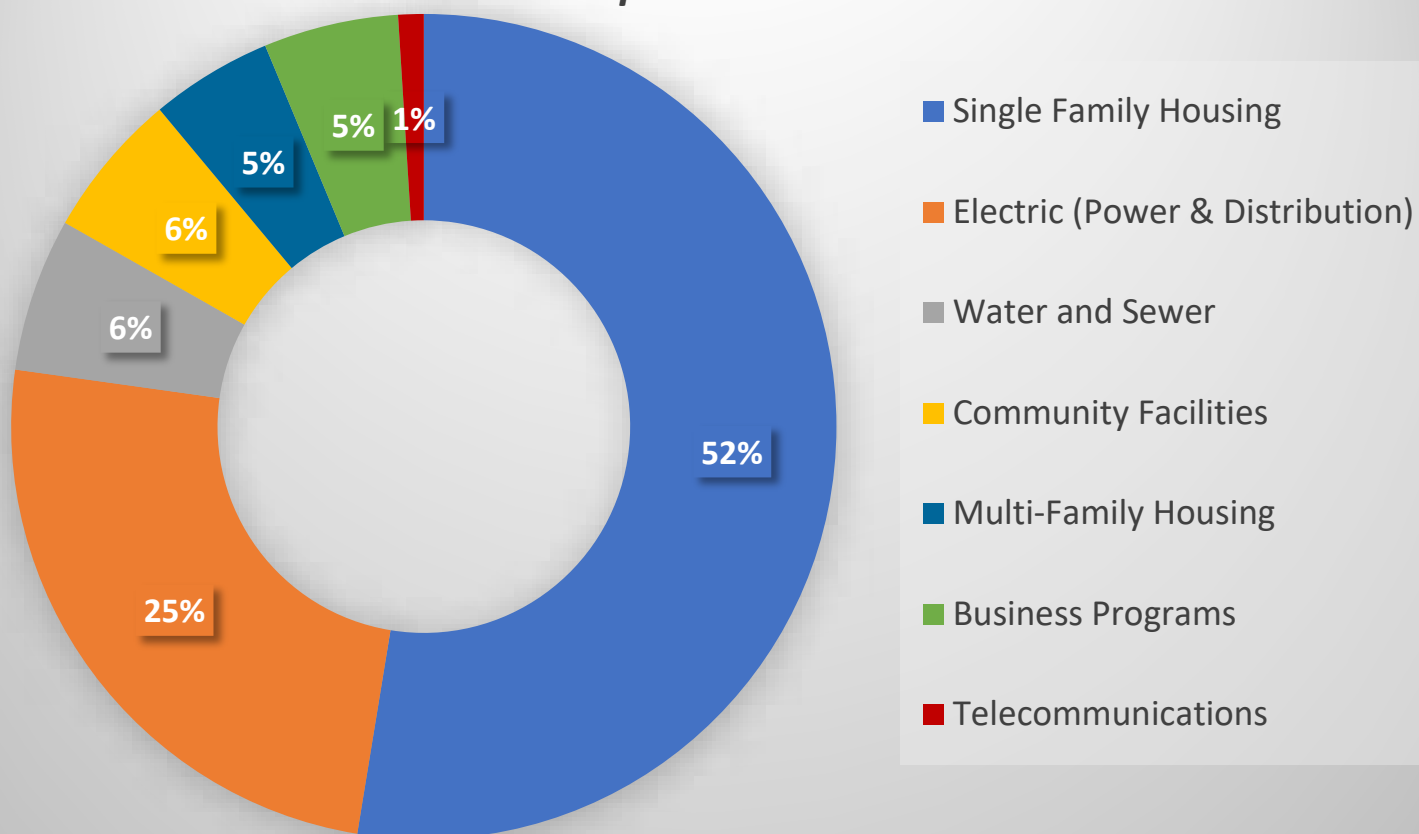
We will be incorporating these priorities into the work we do across the Agency and with our partners to incentivize strategic engagement and investment



Rural Development Investments and Portfolio

- \$32-38 billion in new investments annually
- 70+ Programs
- Recent Supplemental Funding
 - American Rescue Plan Act (ARPA)
 - Infrastructure Investment and Jobs Act (IIJA)
 - Inflation Reduction Act (IRA)
- Current Loan and Guarantee Portfolio
 - 1.1 million borrowers
 - 1.12 million loans
 - \$234.6 billion in loans and guarantees
 - 37, 276 projects
 - 3.3% delinquency >90 days
 - 1.38% of outstanding commercial principle
 - 4.6% of outstanding residential principle

USDA Rural Development Portfolio
April 2024



Rural Business-Cooperative Service (RBCS)

Business & Industry Loan Guarantees

Value Added Producer Grant

Rural Economic Development
Loan and Grant (REDLG)

Fertilizer Production Expansion
Program

Higher Blends Infrastructure
Incentive Program

Intermediary Relending Program

Meat and Poultry Intermediary
Lending Program

Rural Business Development
Grants



Energy Programs

- Advanced Biofuel Payment Program
- Biorefinery, Renewable Chemical, and Biobased Product Manufacturing Assistance Program
- Repowering Assistance Program
- Rural Energy for America Program (REAP)
- Energy Audits & Renewable Energy Development Grants
- Renewable Energy Systems & Energy Efficiency Improvement Loans & Grants



Rural Housing Service (RHS)



Single-Family Housing

Multi-Family Housing

Community Facilities

- Hospitals, health clinics
- Schools
- Daycares
- Fire houses, first responder vehicles and equipment
- Community centers and more.

Rural Utilities Service (RUS)



Electric Programs

Telecommunications
Programs

Water and Environmental
Programs