

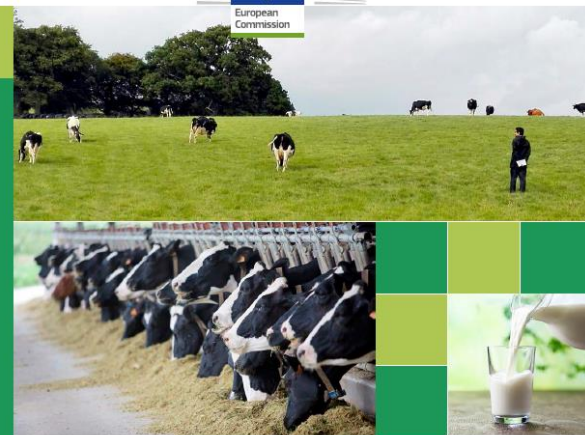


# Welfare of cattle on Dairy farms

Civil Dialogue Group on Animal Products –  
Milk  
20 February 2018

Patrick Caruana  
Directorate-General for Health and  
Food Safety  
Unit F2 – Animals  
Grange, Ireland

Health and  
Food Safety



DG Health and  
Food Safety

OVERVIEW REPORT

**Welfare of Cattle  
on Dairy Farms**

Health and  
Food Safety

# Audits in 2016 on effectiveness of Member States' measures

- So that owners or keepers take all reasonable steps to ensure the welfare of animals under *their care and to ensure that those animals are not caused any unnecessary pain, suffering or injury.*

Art 3 Dir 98/58/EC

- (...) In accordance with established experience and scientific knowledge, comply with the Annex.

Art 4 Dir 98/58/EC

**Ensure welfare  
standards on  
1.7 million farms  
23.5 million dairy  
cows**



# Annex to Directive 98/58/EC

- *Staffing*
- *Inspection*
- *Record Keeping*
- *Freedom of Movement*
- *Buildings and Accommodation*
- *Automatic and mechanical equipment*
- *Feed, water and other substances*
- *Mutilations*
- *Breeding procedures*



	WHO uses them?	HOW are they being used?	What are the results (TRENDS)?
Indicators related to MASTITIS			
Indicators related to LAMENESS			
Indicators related to REPRODUCTIVE diseases/issues			
Indicators related to METABOLIC diseases			
OTHER Indicators			



European  
Commission

# Overview from the audits





# Official Controls

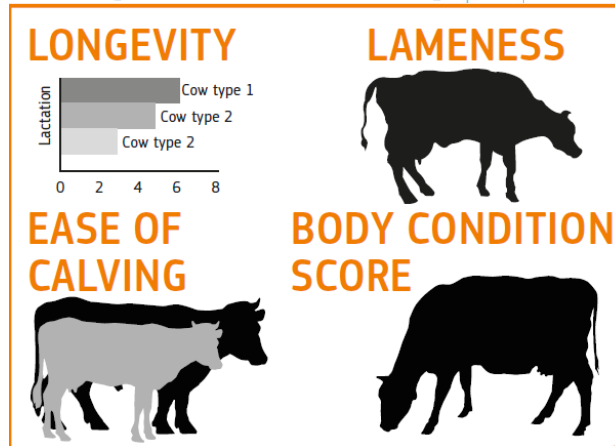
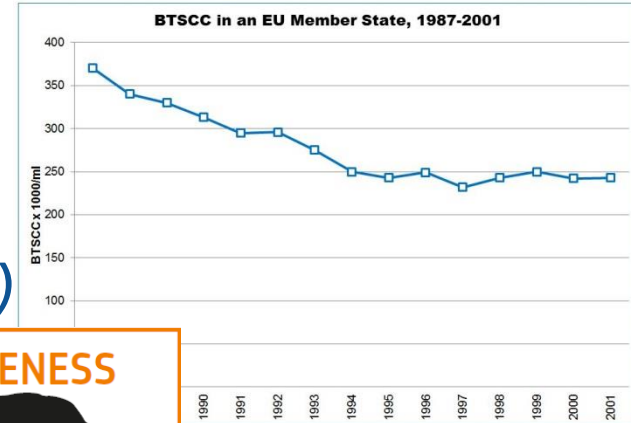
- *Follow the Annex to Directive 98/58/EC thus focusing mostly on resource-based measures*
- *Risk analysis selection criteria are set-up for cross-compliance purposes*
- *Farms checked annually (1% - 5%)*
- *Impact on the animals?*



European  
Commission

# Animal-based indicators

- *Somatic Cell Count (Mastitis)*
- *Body Condition Score (Metabolic)*
- *Lameness*
- *Ease of calving*
- *Longevity*

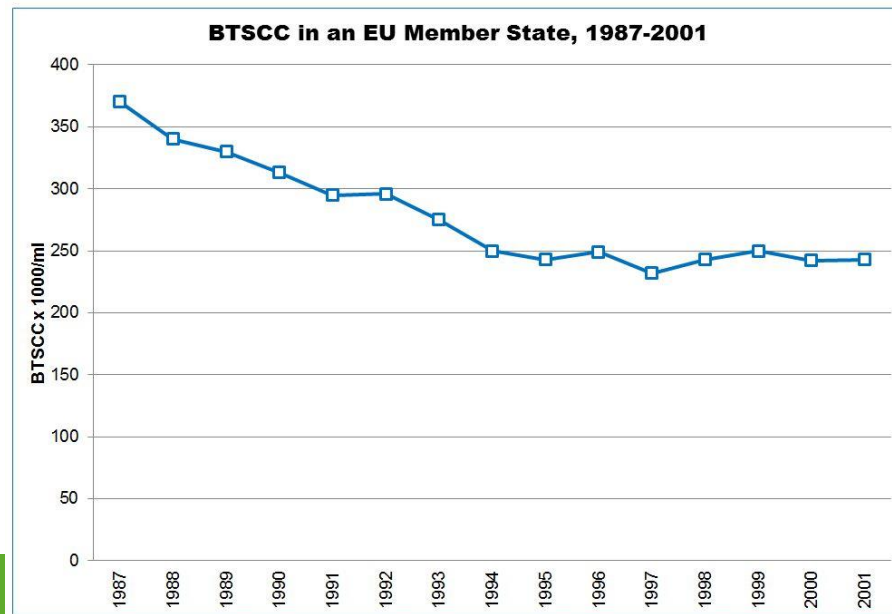






European  
Commission

# Somatic cell count as an indicator



LAB RESULTS		
26.01.2017	BUTTER FAT	
26.01.2017	LACTOSE	4.34
26.01.2017	SOMATIC CELL COUNT	4.92
26.01.2017	MILK UREA	142000
26.01.2017	PROTEIN	23
		3.34



European  
Commission

# Monitoring indicators

	WHO uses them?	HOW are they being used?	What are the results (TRENDS)?
Indicators related to MASTITIS			
Indicators related to LAMENESS			
Indicators related to REPRODUCTIVE diseases/issues			
Indicators related to METABOLIC diseases			
OTHER Indicators			

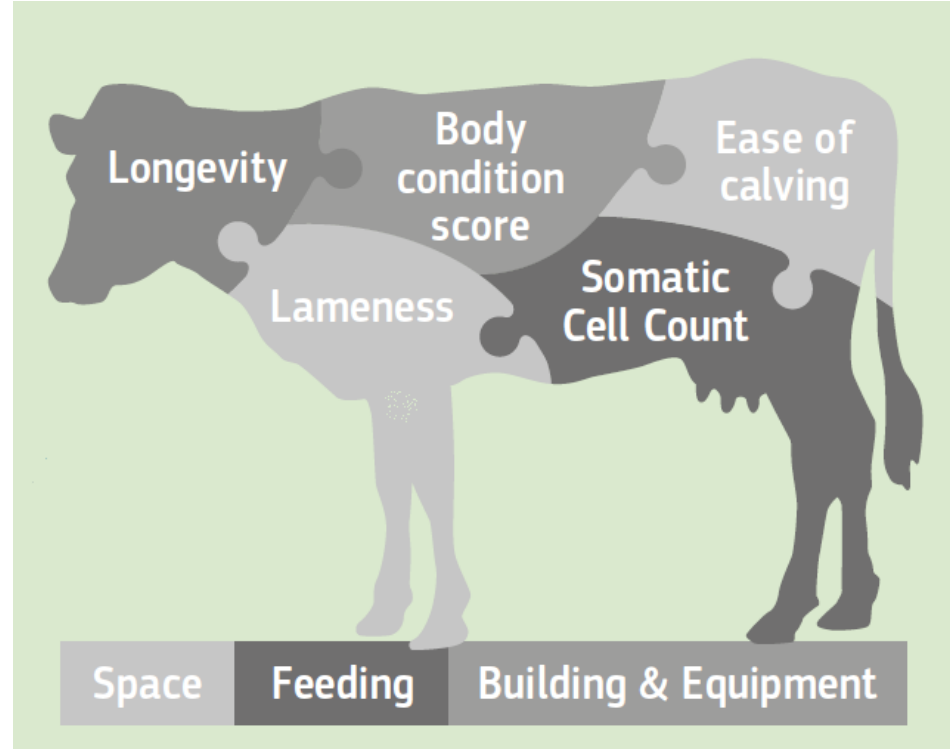




European  
Commission

# Good Practices - 1

- *Using animal-based indicators at inspection to evaluate animal welfare requirements*

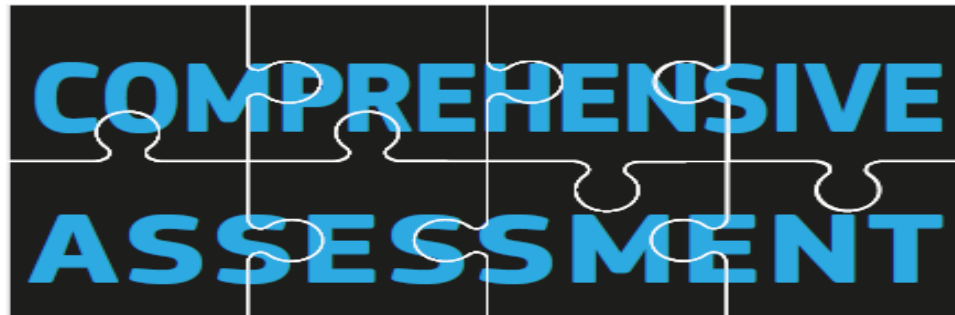




European  
Commission

## Good Practices - 2

- *Sharing of data (somatic cell count, calving intervals, longevity, milk production) between dairy processors, farmers and competent authorities*



Health and  
Food Safety



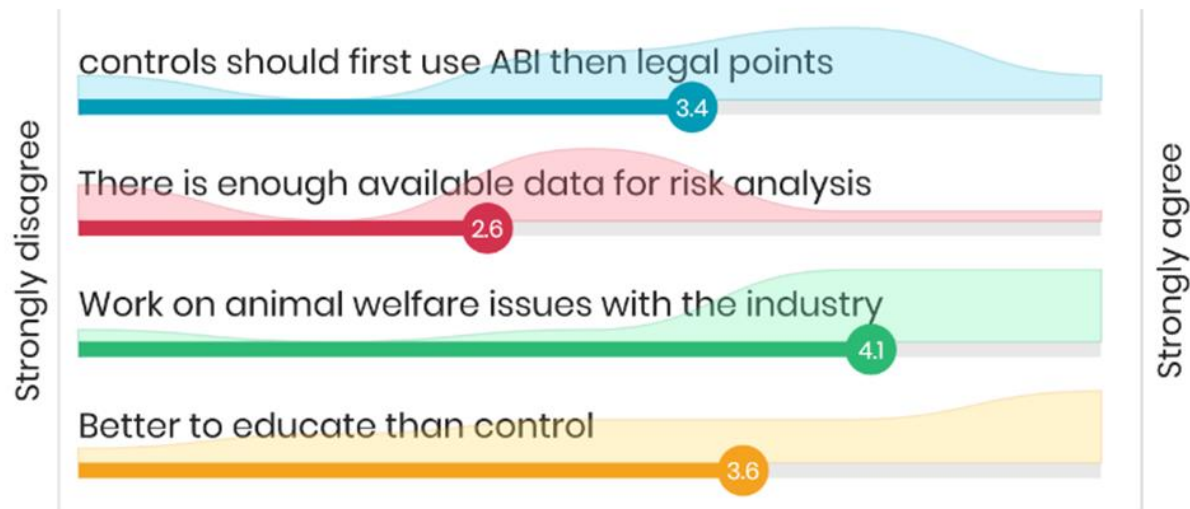
European  
Commission

## Good Practices - 3

- *Developing a national strategy for the dairy sector*
- *Adoption of animal-based welfare parameters in breeding indexes*
- *Use of RDF for restructuring dairy farms*  
*(Also, positive feedback on farmer discussion groups)*

# Conclusions at the end of workshop

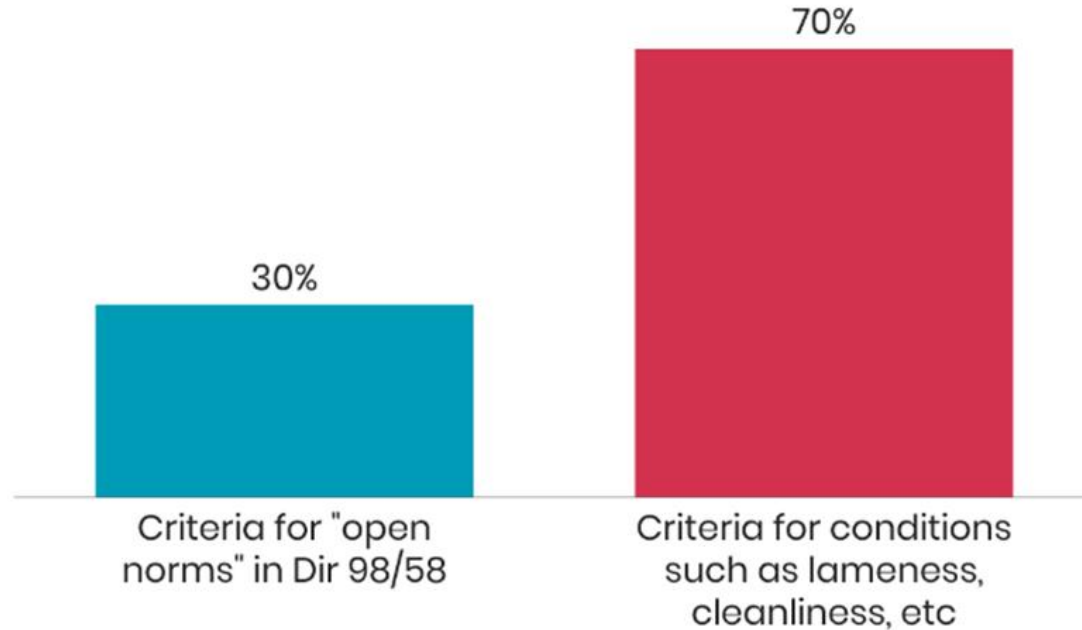
Do you agree?





European  
Commission

**Which is the priority for you to develop? "Open norms" such as adequate space, suitable buildings etc**



# Links

- Overview report

[http://ec.europa.eu/food/audits-analysis/overview\\_reports/details.cfm?rep\\_id=117](http://ec.europa.eu/food/audits-analysis/overview_reports/details.cfm?rep_id=117)

- Audit reports

[http://ec.europa.eu/food/audits-analysis/audit\\_reports/index.cfm](http://ec.europa.eu/food/audits-analysis/audit_reports/index.cfm)