

Copa-Cogeca:
The united voice of farmers and their
cooperatives in the European Union

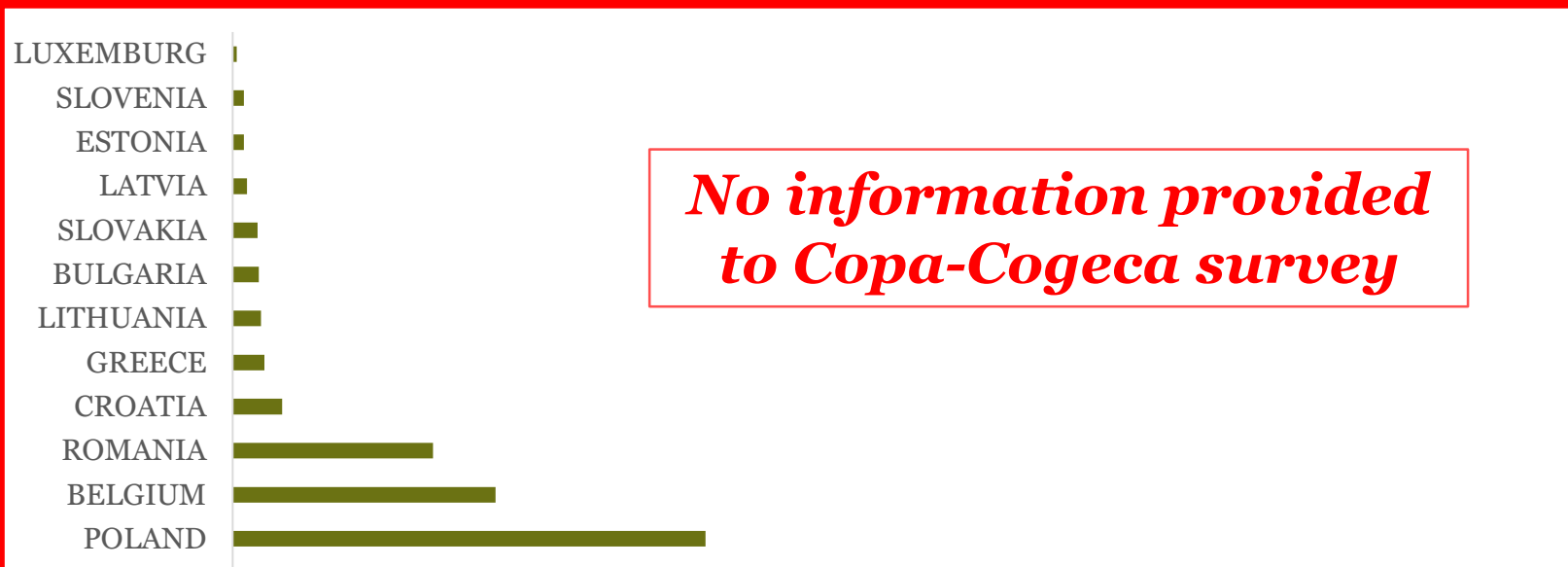
The actions of farmers and agro-cooperatives to reduce tail-biting and prevent routine tail-docking of pigs



Margareta Åberg
Vice-Chair of Copa and Cogeca Working Party on
Pigmeat

Miguel Angel Higuera
Chair of Copa Cogeca Working Party on Animal
Health and Welfare

Copa-Cogeca Survey

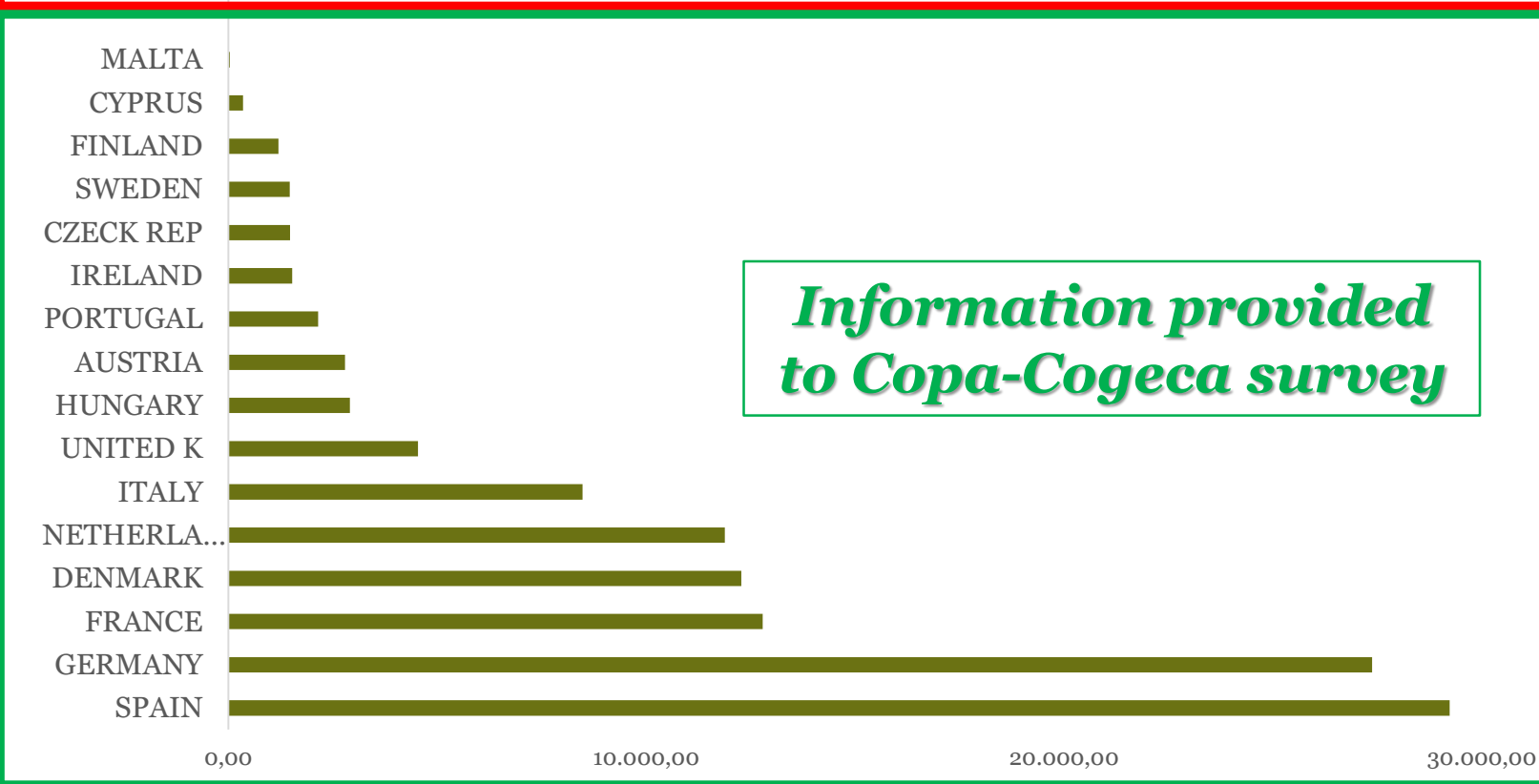


COUNTRIES:

Non reporting countries: 12

Reporting countries: 16

Participation: 57,14%



PIG POPULATION:

Non reporting pigs: $26,7 * 10^6$

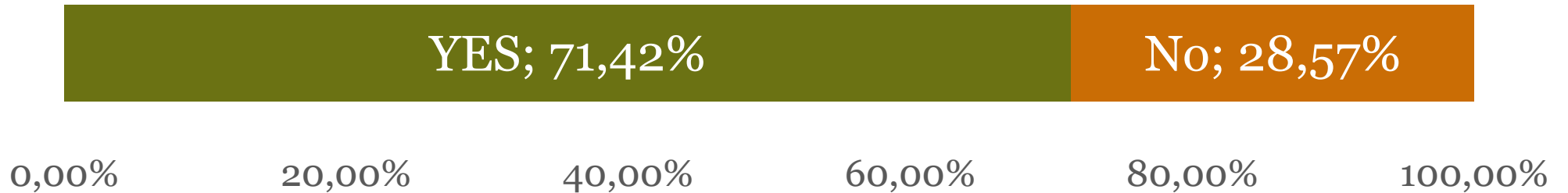
Reporting pigs: $120,4 * 10^6$

Share: 81,84%

1.- Are your members aware of Commission Recommendation (EU) 2016/336 and the accompanying Commission Staff Working Document?

%

Answers: 87,5%



3.- Does your country specific subsidies/funds allocated to farmers to implement more requirements that Directive 120/2008?

%

Answers: 93,75%

YES; 26,66%

No; 73,34%

0%

20%

40%

60%

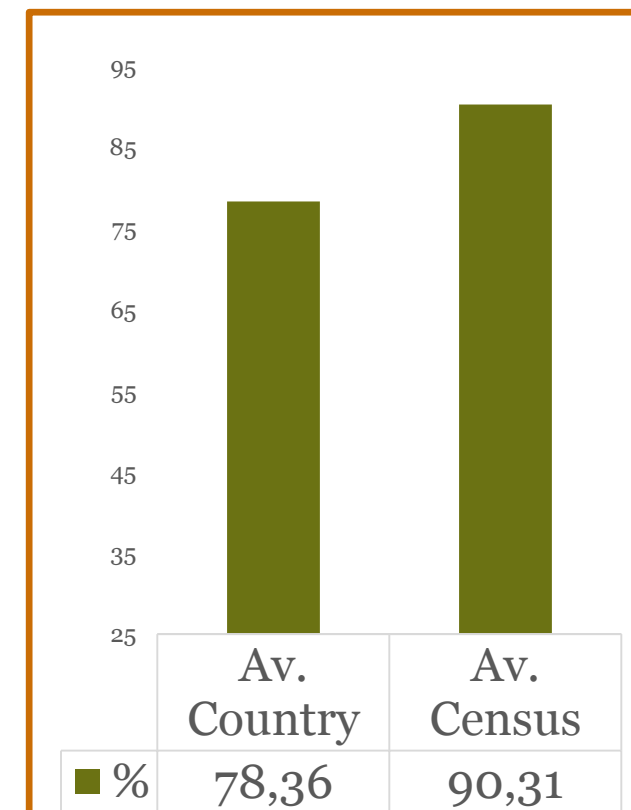
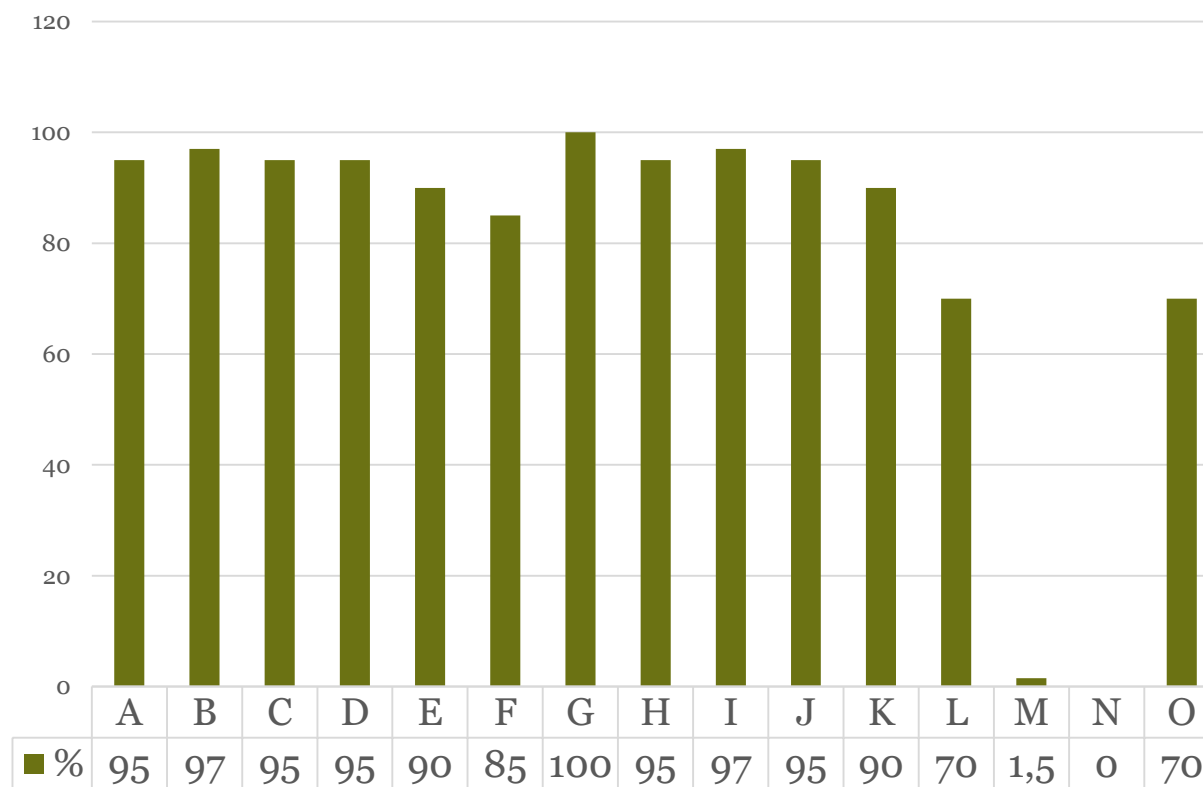
80%

100%

7.- Prevalence of tail docking in your country?

%

Answers: 93,33%



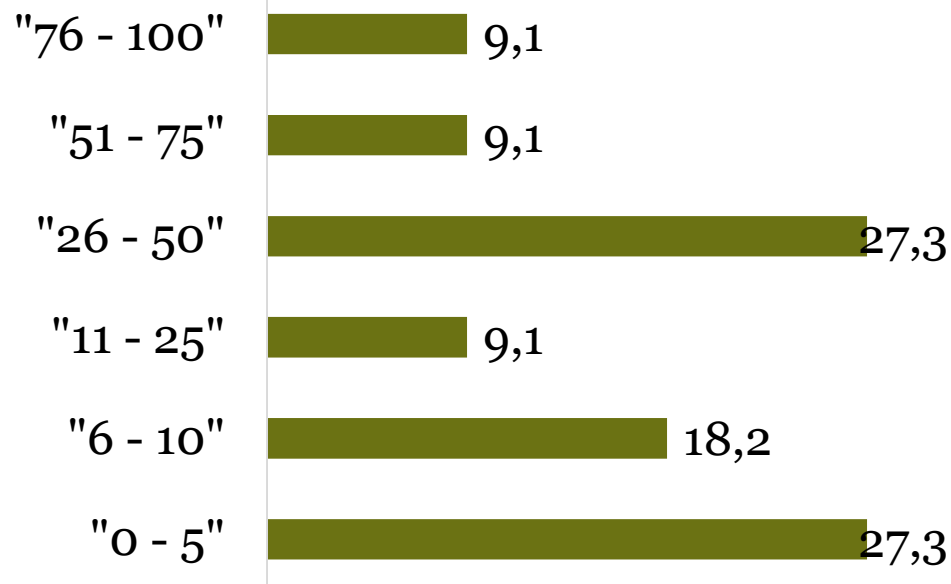
8.- Tail biting on entire tails:

Prevalence:

Answers: 68,75%

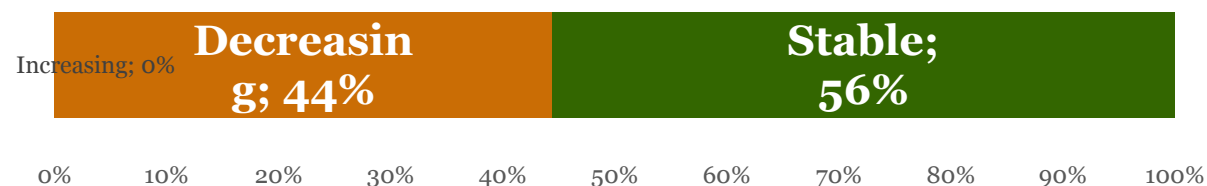
Av. Countries: 28,5%

Av. Census: 46,3%



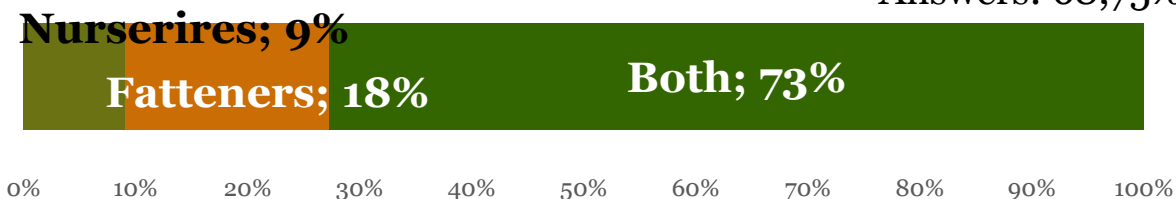
Evolution:

Answers: 56,25%



Location (nursery, Fattening, Both)

Answers: 68,75%



9.- Tail biting on docked tails:

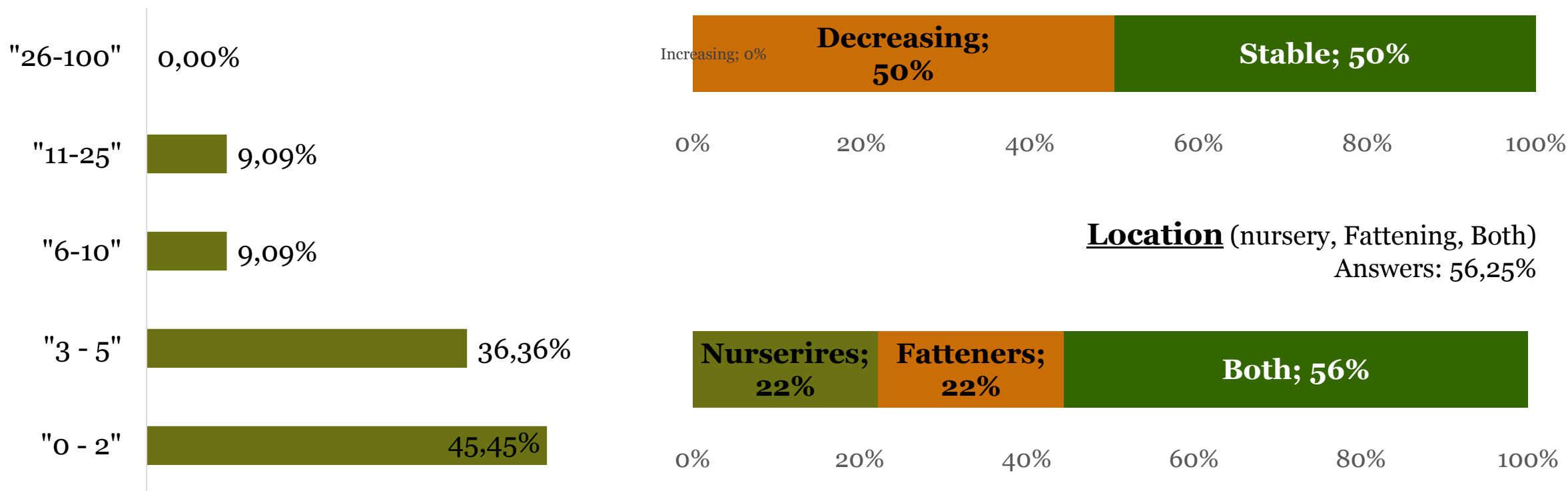
Prevalence:

Answers: 66,33%

Av. Countries: 5,2%

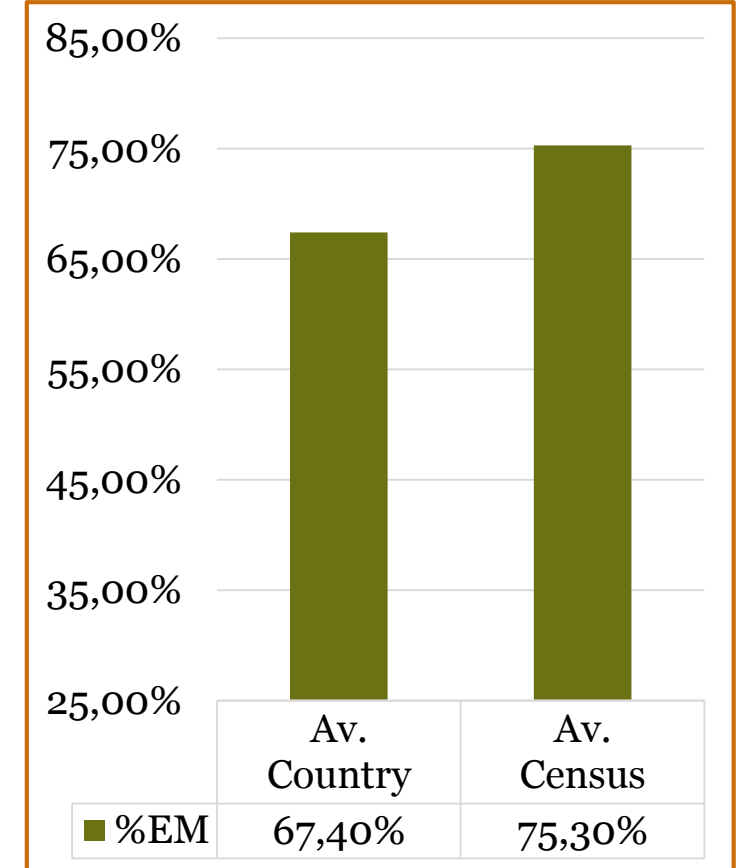
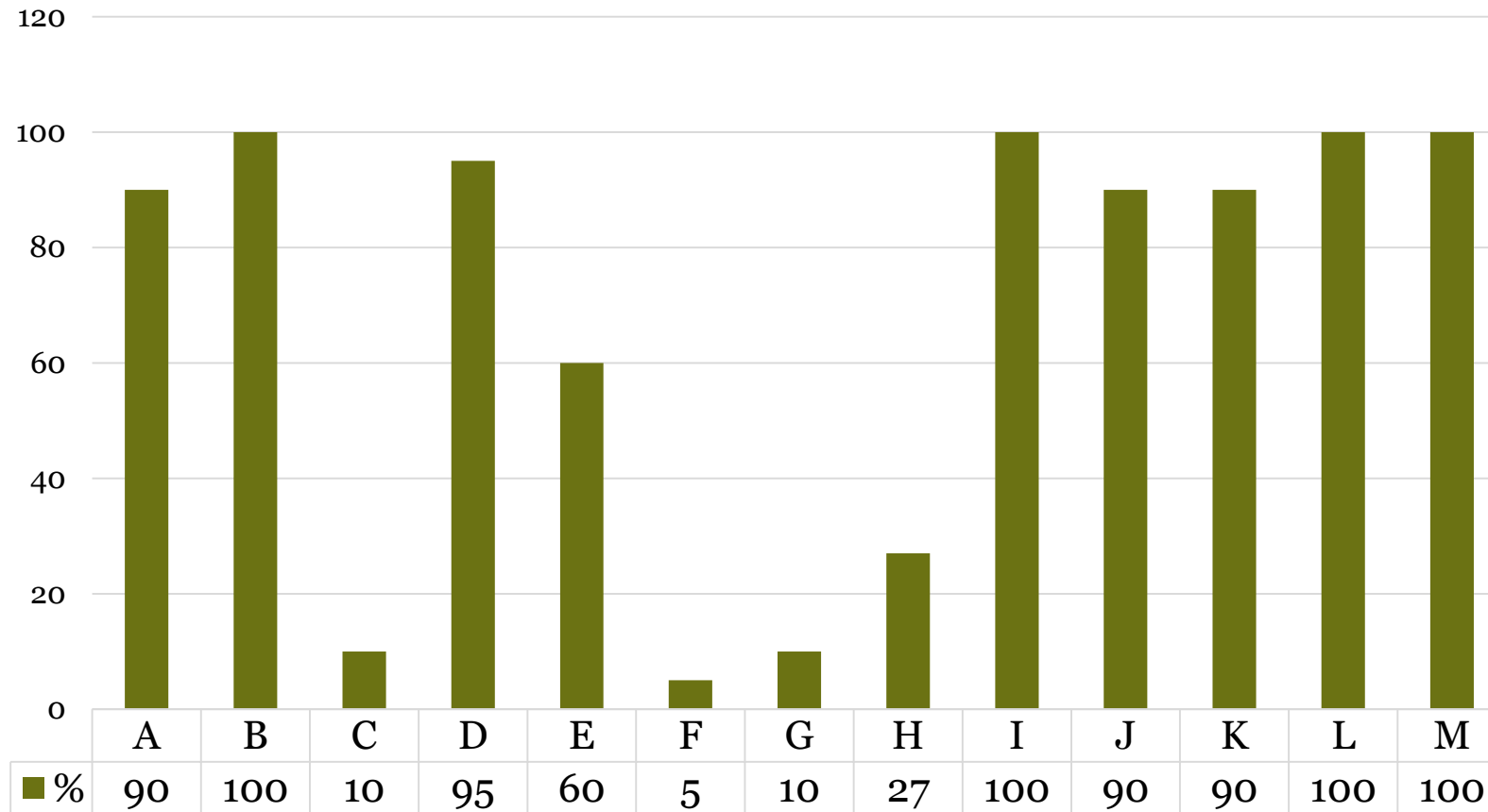
Evolution:

Answers: 50,0%



12.- What is the estimated prevalence of farms with suitable enrichment material? :

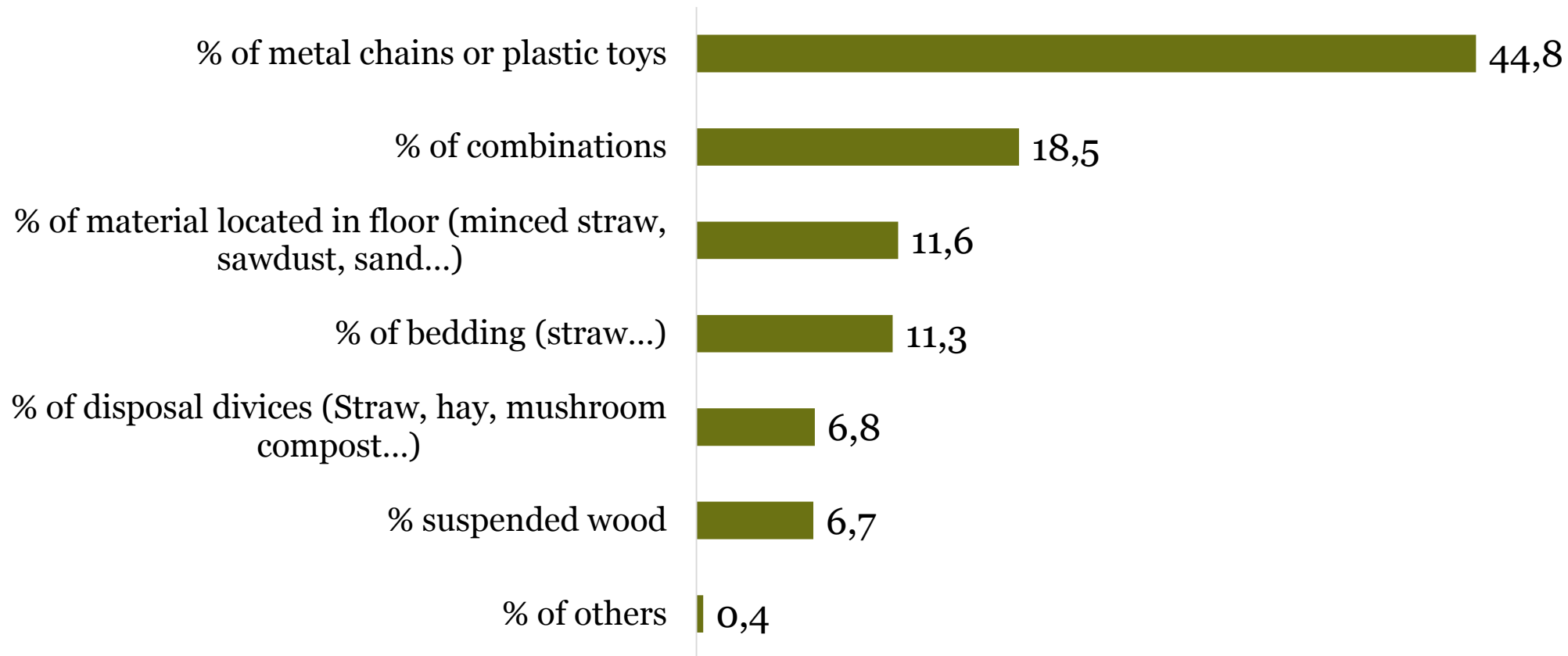
Answers: 81,25%



13.- Enrichment material used in nurseries:

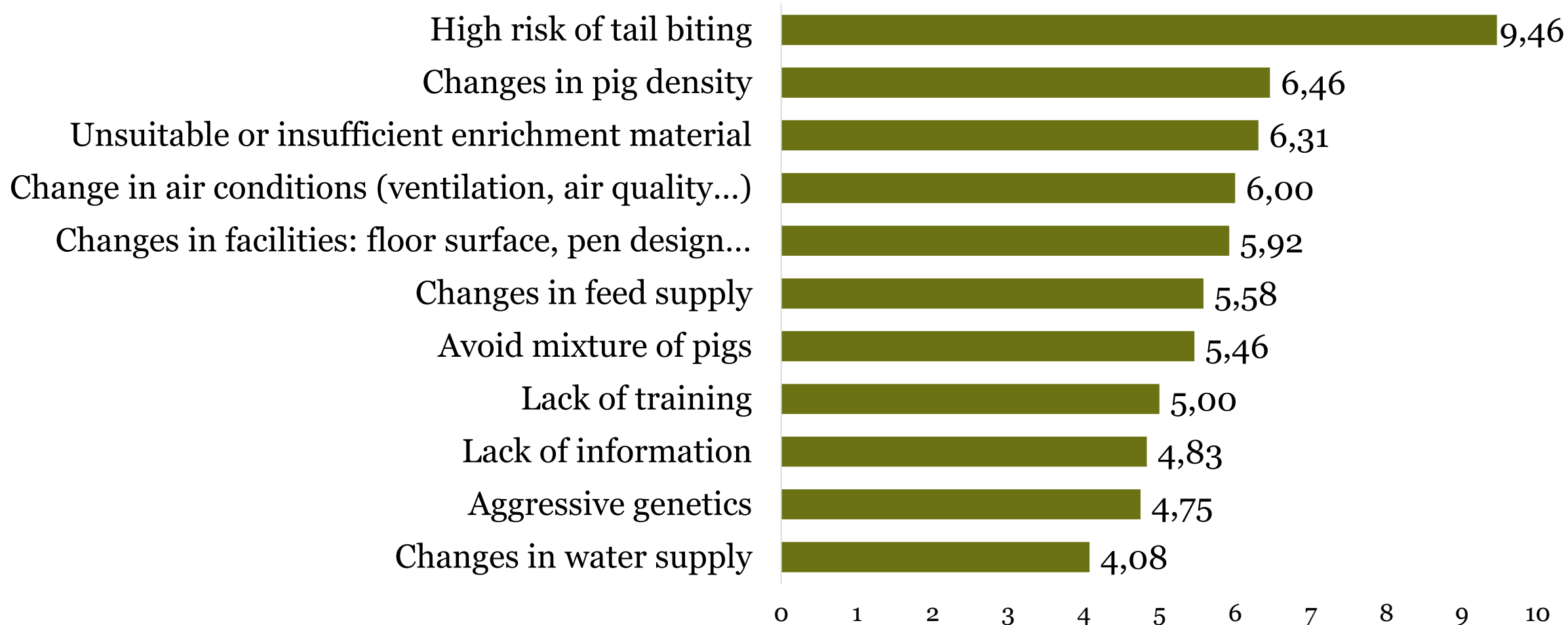
Answers: 81,25%

%



14.- What are the main challenges farmers are facing to avoid tail docking? 1 to 10 (1 less importance, 10 much importance)

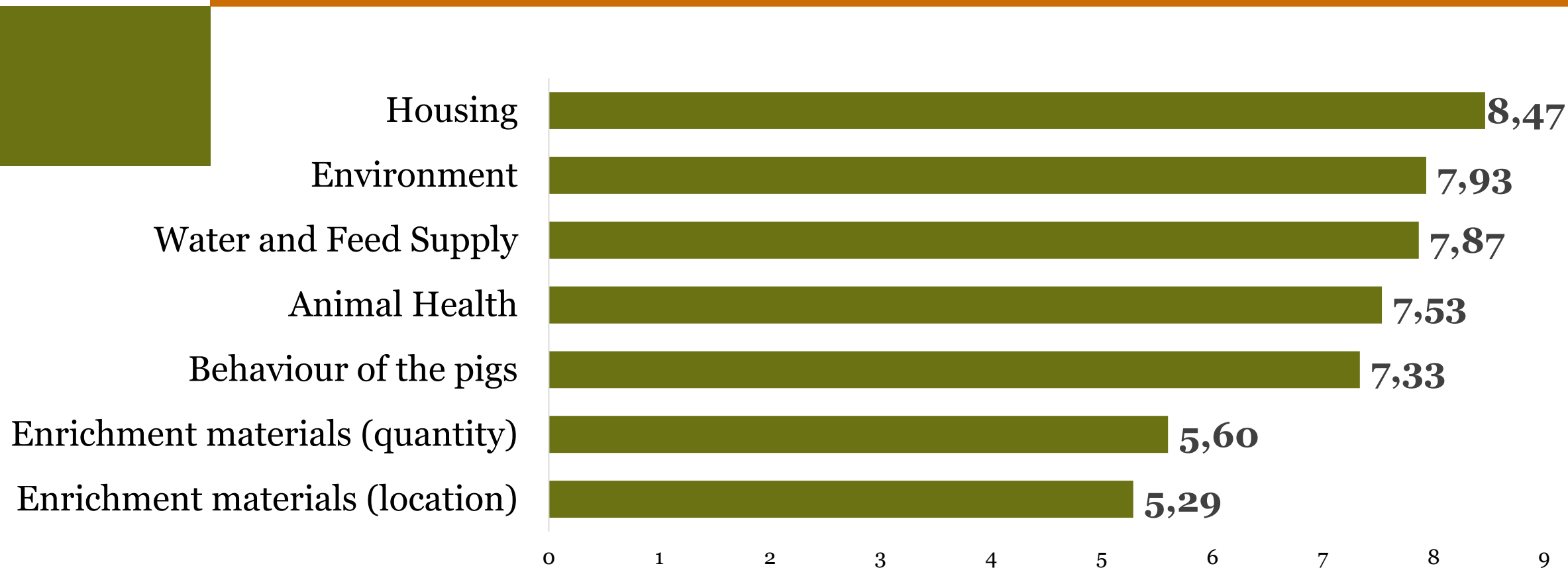
Answers: 87.5%



Other: Animal Health; Aids for farmers; Interest from consumers

15.- From a farmer point of view what are the key factors to prevent tail biting. 1 to 10 (1 less importance, 10 much importance)

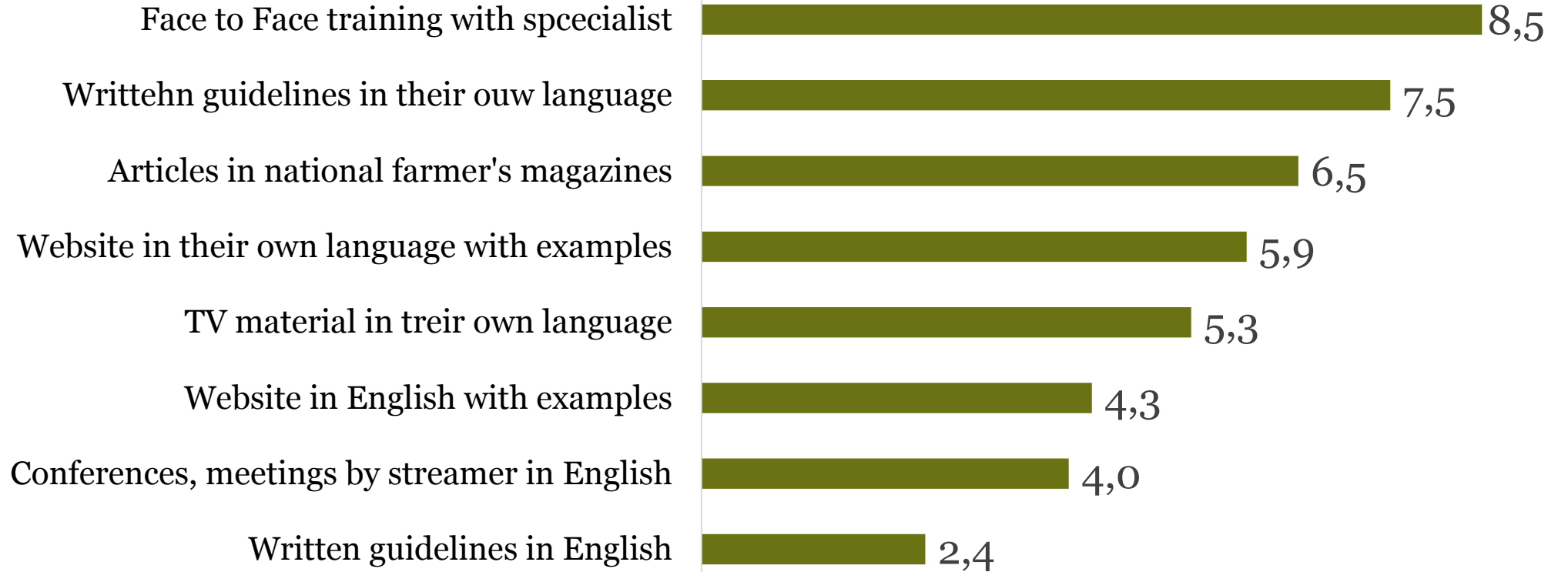
Answers: 100%



Others: Stocking density; spotting and removing of biters

19.- For communication proposal. What are the most effective ways to arrive to farmers. 1 to 10 (1 less importance, 10 much importance)

Answers: 100%

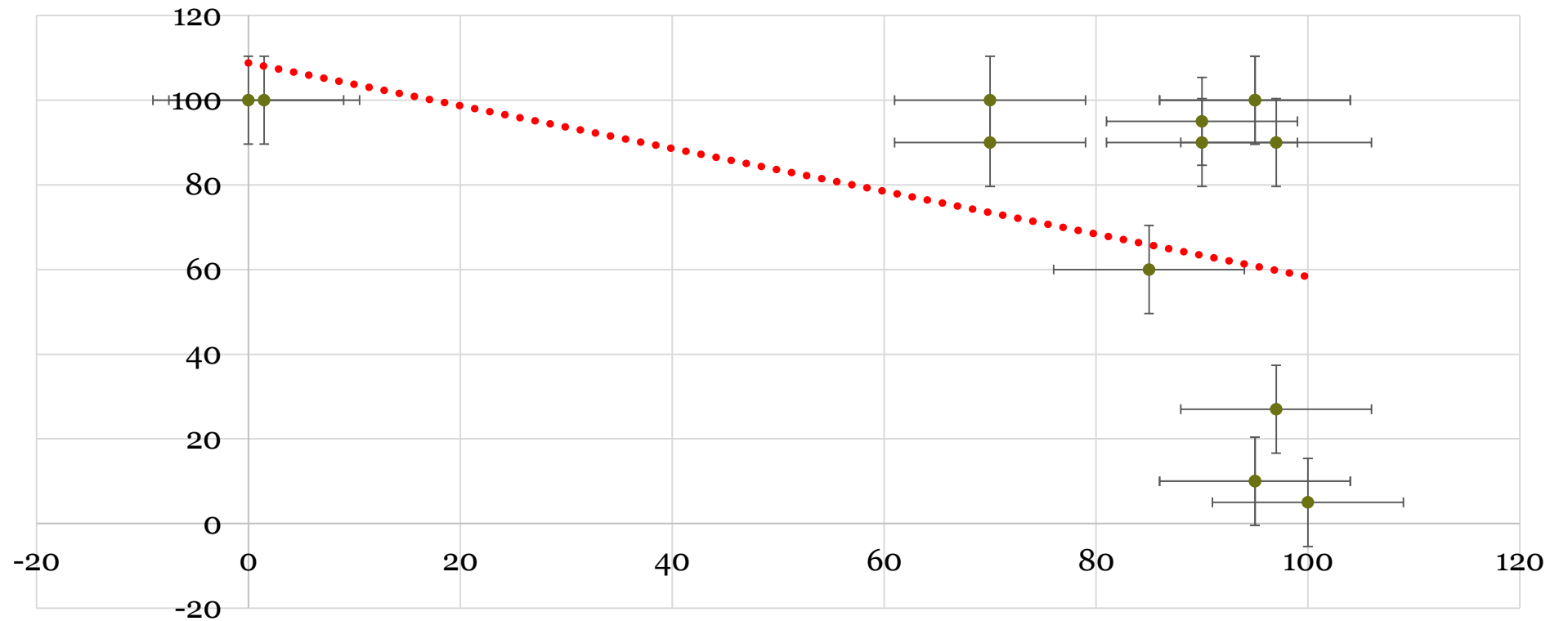


Other: Sharing knowledge between farmers; examples from the same country; Adviser for good and best practices

Correlation between Tail Docking and Use of suitable Enrichment Material

% of suitable E M

Correlation T D and Use of suitable E M



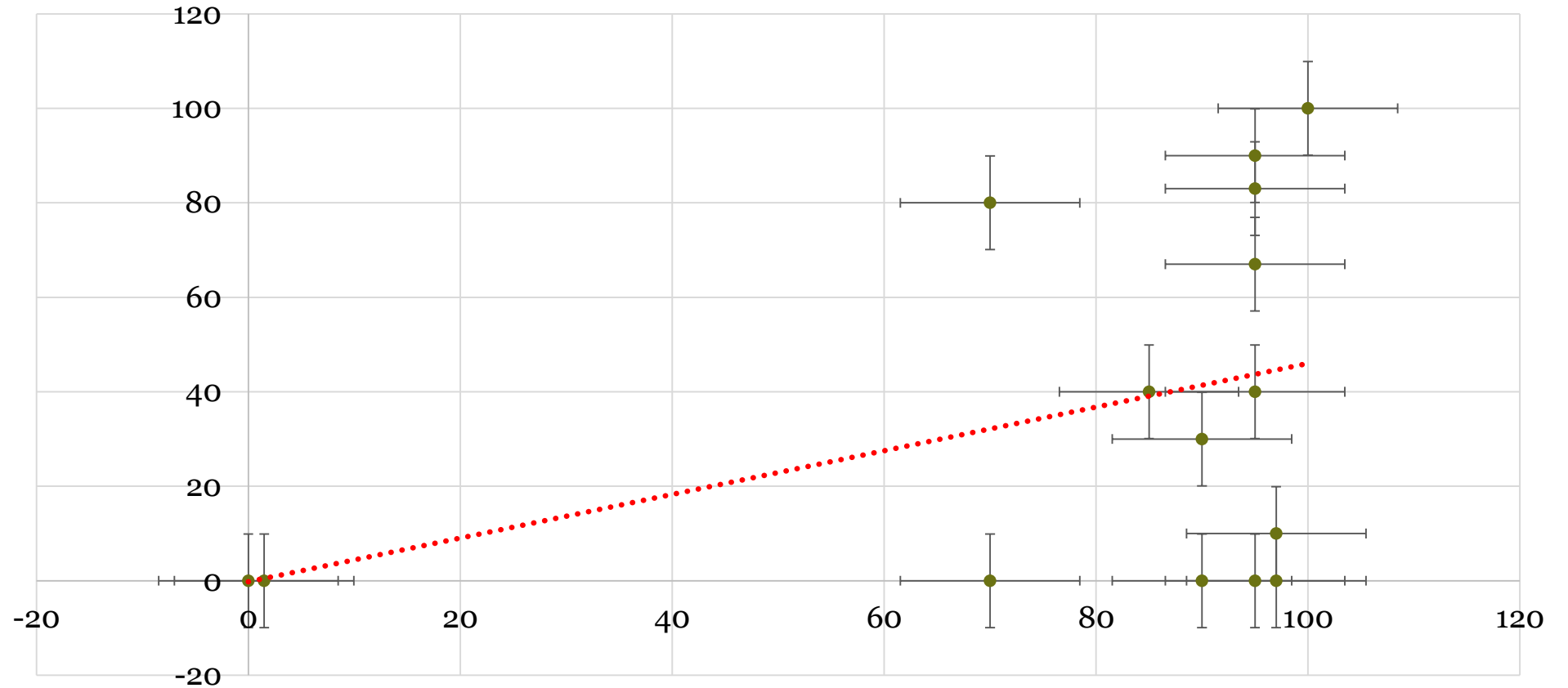
% of Tail Docking

European farmers

European agricultural cooperatives

Correlation between Tail Docking and Use of metal chains and/or toys

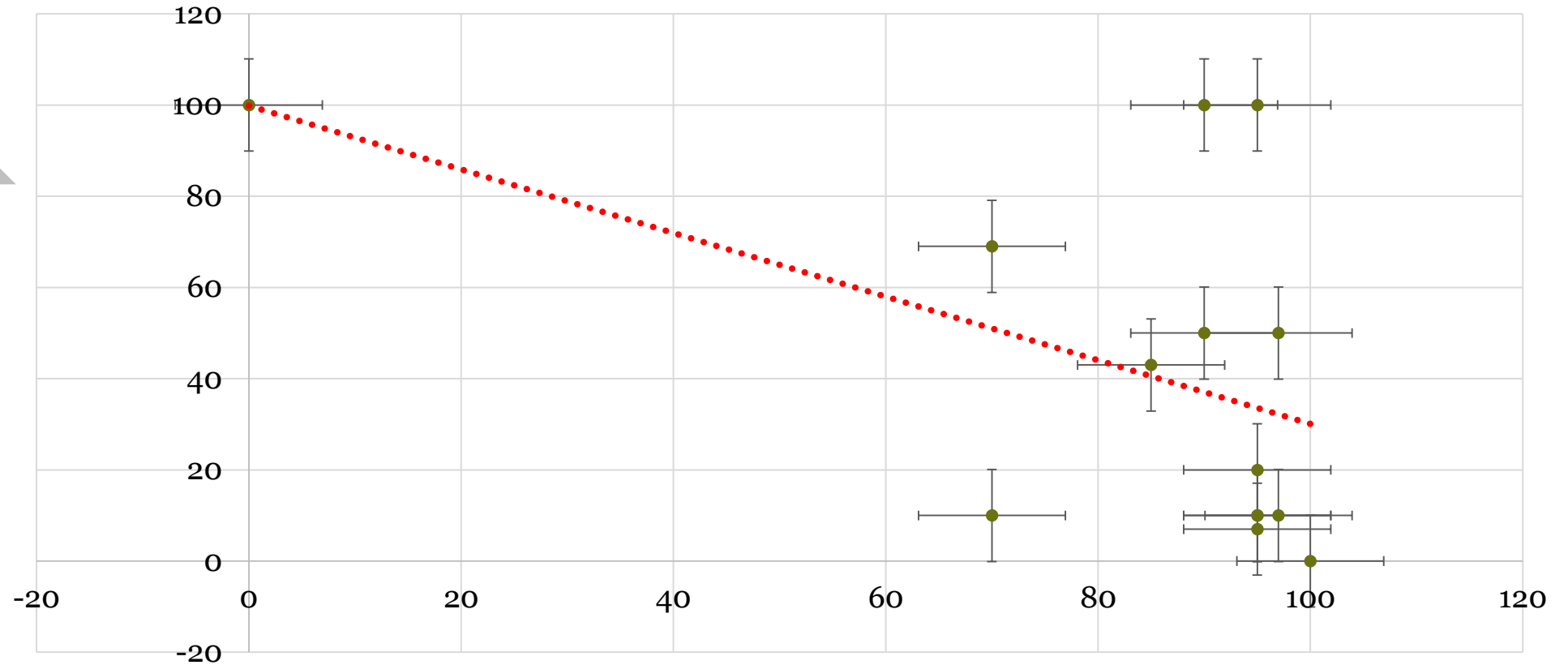
% Tail Docking



% of use of metal chains &/or plastic toys

Correlation between Tail Docking and Use of bedding and/or materials in the floor and/or combination of different materials

% use different EM



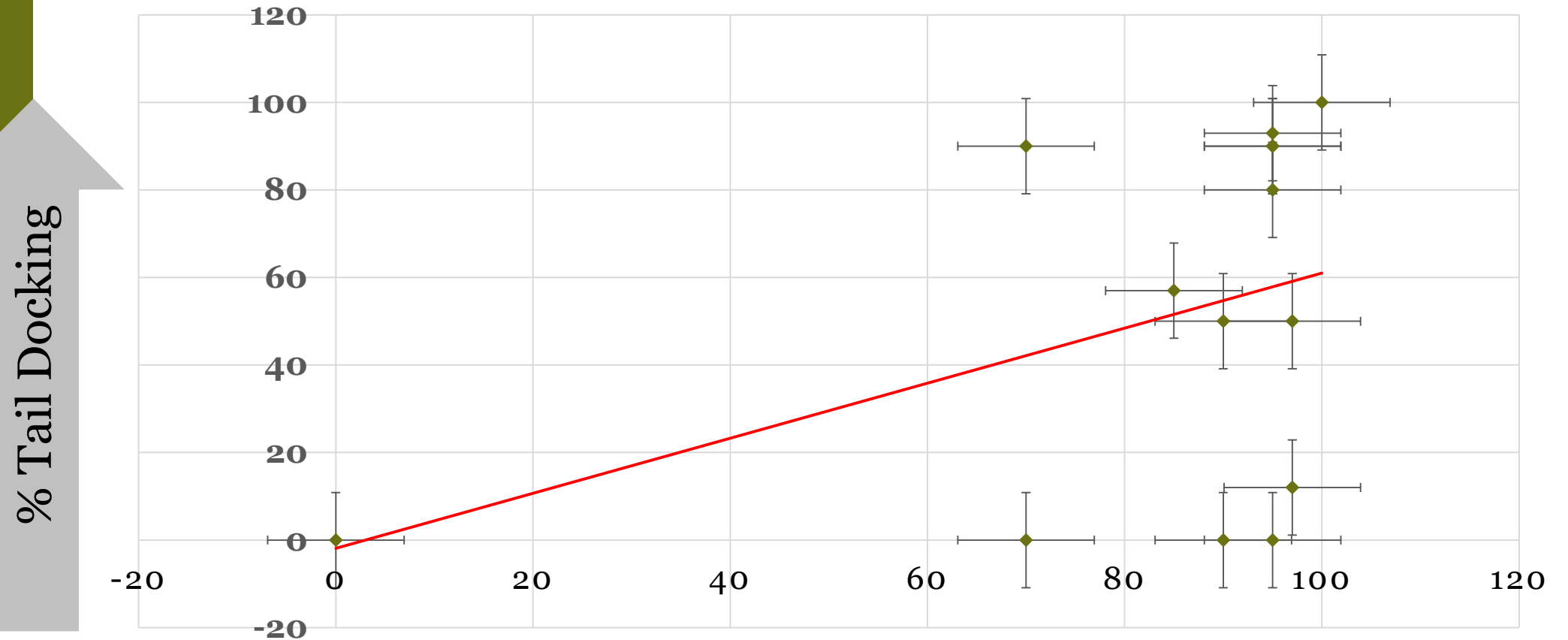
% of Tail Docking

European farmers

European agricultural cooperatives

a

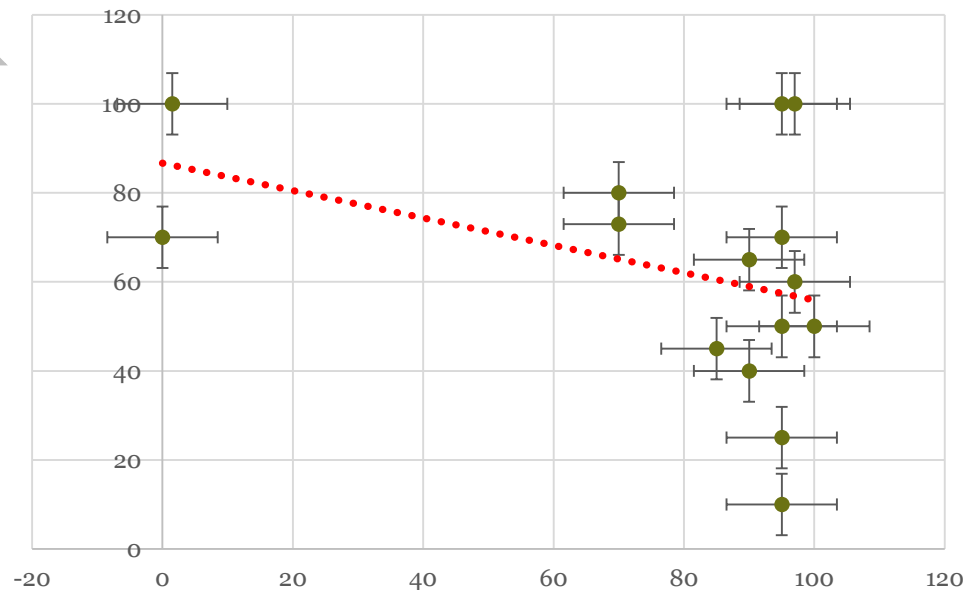
Correlation between Tail Docking and Use of metal chains and/or suspended wood and/or disposal devices



% of use of chain + wood + devices

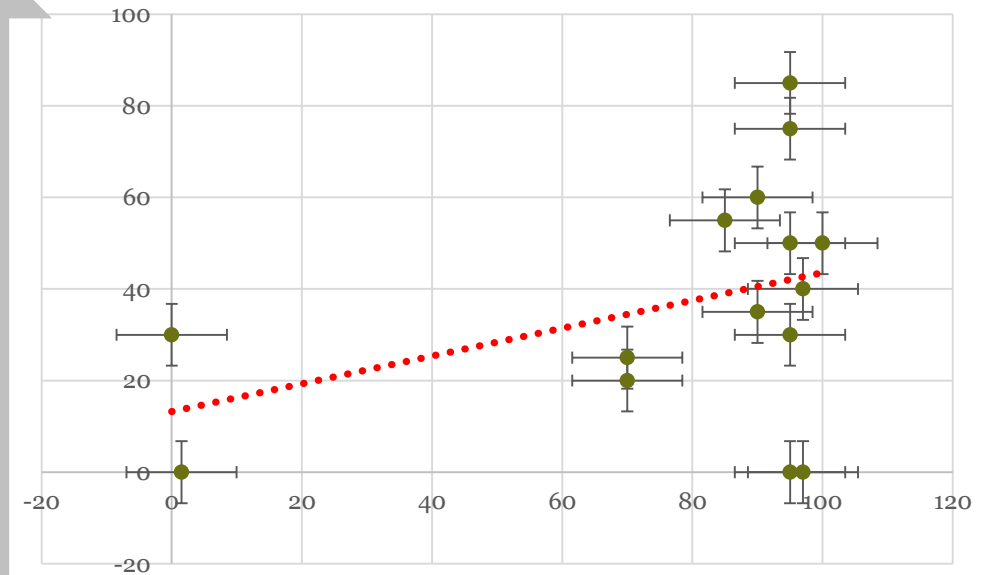
Correlation between Tail Docking and floor surface: concrete + mix floor vs slatted floor

% of concrete and mix floor



% Tail Docking

% of slatted floor

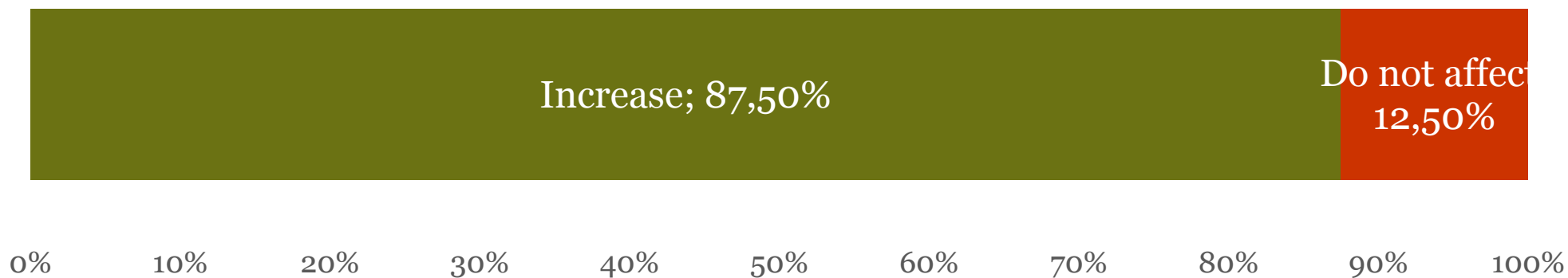


% Tail Docking

20.- The measures implemented to prevent tail biting and avoid tail docking: “increase”, “reduce” or “not affect” the production cost

Answers: 100%

%



Decrease: 0%
Increase: 87,5%
Do not affect: 12,50%

21.- Placing in the market products coming from pig with entire tail:

Answers: 100%

%

Consumers will pay more for pig meat and pork products

29,40%

Consumers are not going to pay more

58,82%

I really do not know if consumer are aware about tail docking

11,76%

0,00%

25,00%

50,00%

75,00%

Conclusions

- It is important to **support initiatives** to develop AW production in EU
- Involve farmers in the early stages of development of workable and more effective **solutions**
- farmers must be given sufficient **flexibility** to implement new management system (scientific evidence)
- Additional **research** are needed
- **Enforcement** of existing animal welfare legislation → avoid distortion of competence
- TRADE. Ensure coherence with **trade police** → Imported products must to respect the same welfare standards than UE farmers

Thanks for listening



Follow us on



@Copacogeca

@Copacogecameat

#dynamicagri

www.copa-cogeca.eu