



Canada Milk Class 7

Brussels, 17 October 2017

Canadian Dairy Policy



Milk supply
management

CDC

Production
controls
(quota)

Administered
pricing

Import
controls

Pricing



Milk

**Provincial
marketing
boards**

Milk components

Milk Classes



CAN\$/kg

Canadian Dairy Product Classes

		Example Prices, BC July 2007		
		BF	Protein	OS
1a	milk and milk beverages, including egg nog, cordials, cultured milk and concentrated milk to be reconstituted as fluid milk	5.3000	6.2932	6.2932
1b(i)	cream with butterfat content not less than 5%	5.3000	7.4370	7.4370
1b(ii)	fresh cream with a butterfat content of 32% and higher used to make fresh baked goods	3.7911	3.6084	3.6084
1c	new 1(a) and 1(b) fluid products approved by the provincial authorities during an introductory period.	5.3000	5.6819	5.6819
1d	1(a) and 1(b) fluid products marketed outside the ten signatory provinces but within the boundaries of Canada	7.2333	5.0553	5.0553
2	ice cream, ice cream mix, yogurt, kefir, sour cream, milk shake mixes and other frozen dairy products, fudge, puddings, soup mixes, caffeinated and Indian sweets	7.2333	5.4013	5.4013
3a	cheeses other than those identified in Class 3(b), cheese curds other than stirred	7.2333	12.6330	0.8428
3b	cheddar cheese, stirred curd, cream cheese, creamy cheese bases, cheddar and cheddar-type cheeses sold fresh	7.2333	12.4025	0.8282
4a	butter and butteroil, all types of powder, concentrated milk used as an ingredient in the food industry, all other products not classified elsewhere	7.2333	5.0219	5.0219
4a(i)	milk components for the manufacture of rennet casein, meal replacement products, medical and sports recovery drinks and infant food formulations	7.2333	1.7000	1.7000
4b	condensed and concentrated milk	7.2333	5.0219	5.0219
4c	new industrial products approved by provincial authorities for an introductory period	7.2333	4.3370	4.3370
4d	unexplained inventory and plant losses	7.2333	5.0219	5.0219
4d(i)	2% transport shrinkage (Western Milk Pool only)	7.2333	5.0219	5.0219
4m	milk components for marginal markets (e.g., animal feeds)	1.2500	1.2500	1.2500
5a	cheese ingredients for further processing	3.7911	6.7118	1.4423
5b	all other dairy products for further processing	3.7911	3.6084	3.6084
5c	dairy products for further processing by confectioners	3.3740	2.0000	2.0000
5d	planned exports of products within WTO commitments	1.9000	1.9000	1.9000



Eligible components, products and ingredients:

- (a) skim milk components in liquid and dry form, in any concentration, derived by any process, including **MPC and MPI**;
- (b) **skim-milk powder**;
- (c) whole milk powder;
- (d) edible **casein** and edible **caseinate** powders;
- (e) yogurt powders, sour cream powders, and partly-skimmed milk powder and blended milk powders with a maximum milk fat content of 4%;
- (f) rennet casein (dry or curd) used in the manufacture of non-standardized final products in the processed cheese category.

Class 7



MILKingredients.ca



Canadian Dairy
Commission

Commission
canadienne du lait

Special Milk Class Prices

Prices for 5abc

Milk Class	Butterfat (\$/Kg)	Protein (\$/Kg)	Other Solids (\$/Kg)
5(a)	7.7335 -7.6%	4.3472 6.6%	0.6261 -10.0%
5(b)	7.7335 -7.6%	1.8287 -5.8%	1.8287 -5.8%
5(c)	8.3310 -1.9%	1.4091 -8.9%	1.4091 -8.9%

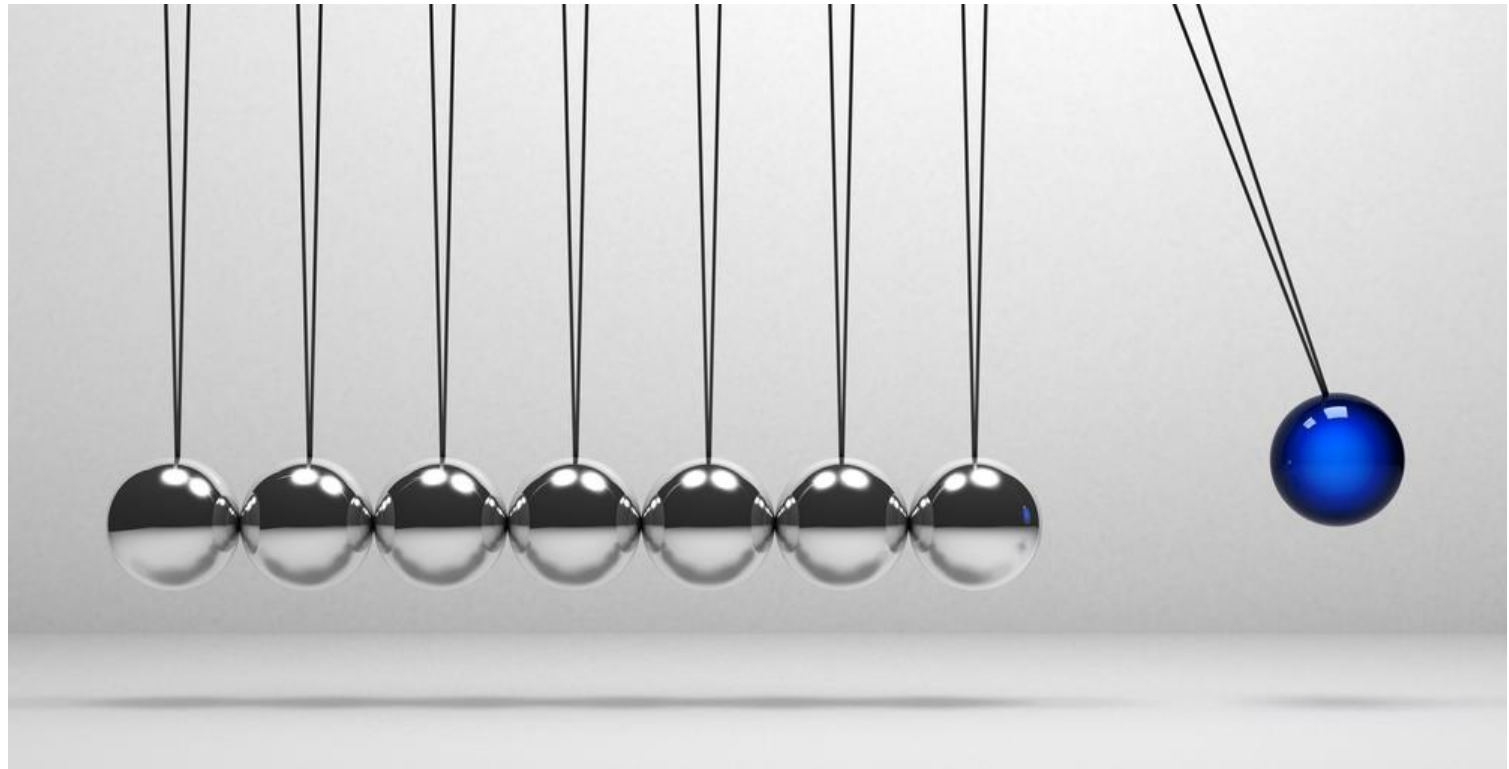
**Prices in effect during the month of November 2017*

Prices for Class 7 Prices

Milk Class	Butterfat (\$/Kg)	Protein (\$/Kg)	Other Solids (\$/Kg)
7	7.3851	1.4314	1.4314

**Prices in effect from 01 September 2017 to 30 September 2017*

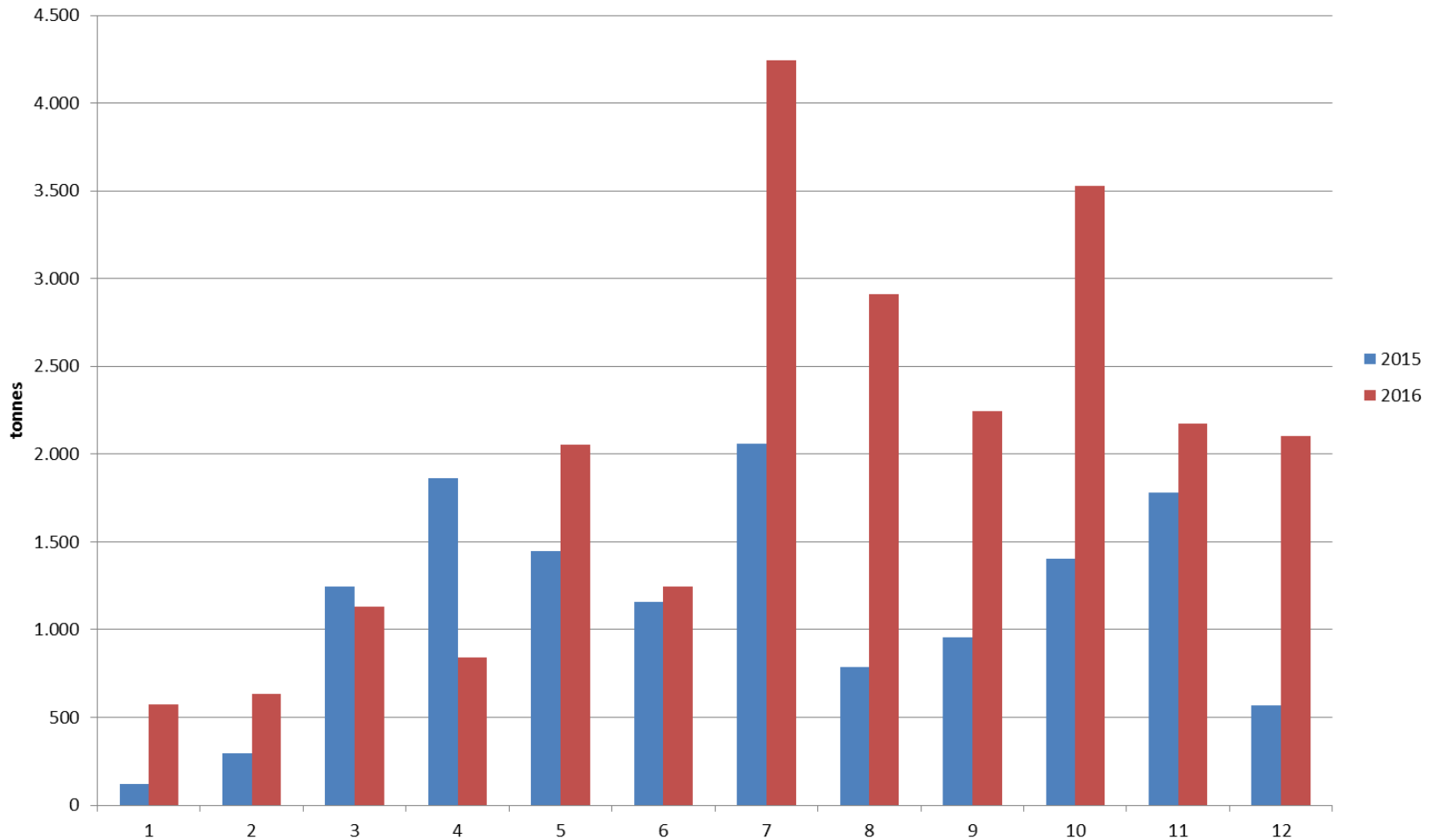
Impact?



Canada SMP exports



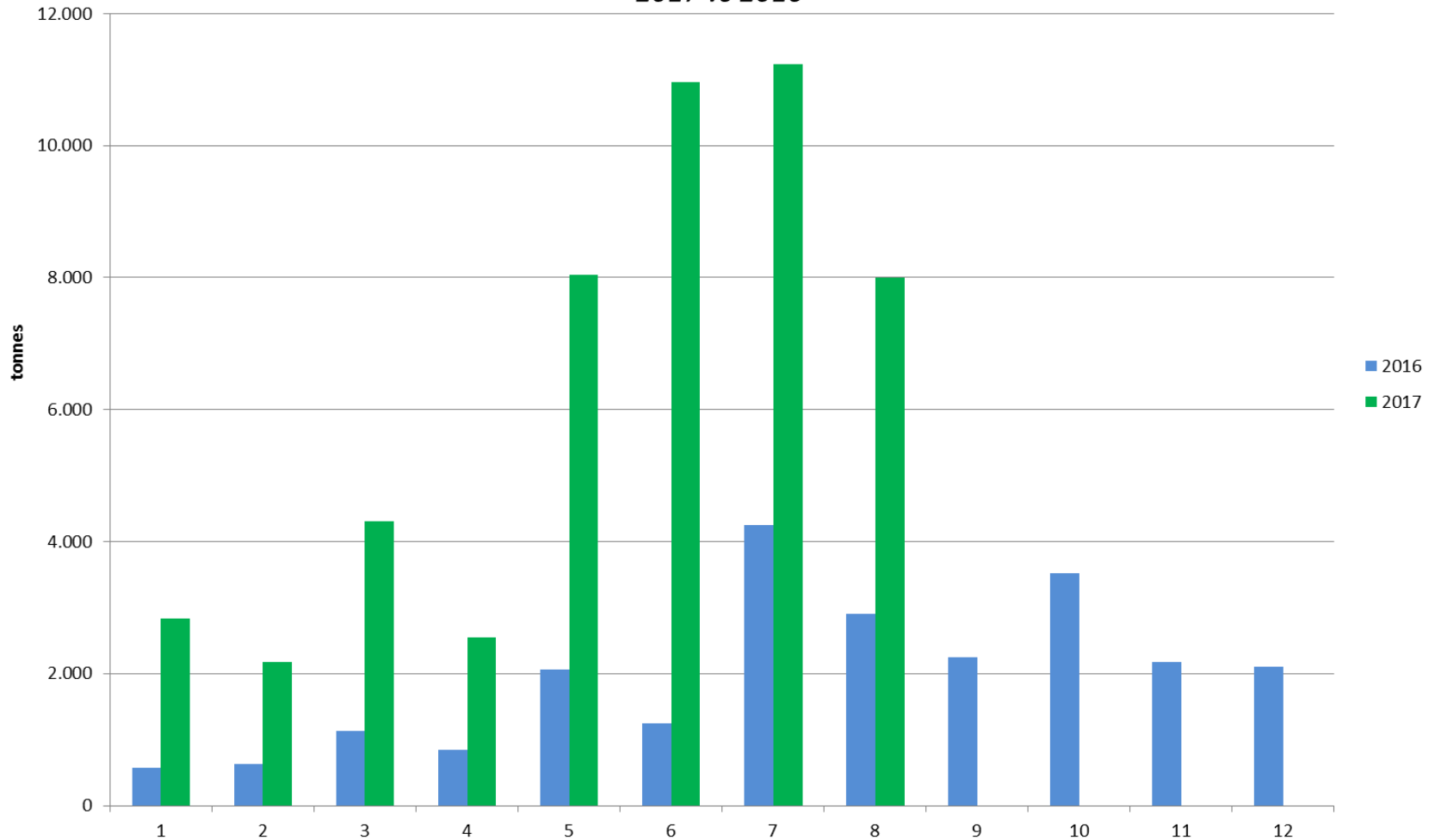
Canada SMP exports 2016 vs 2015



Canada SMP exports



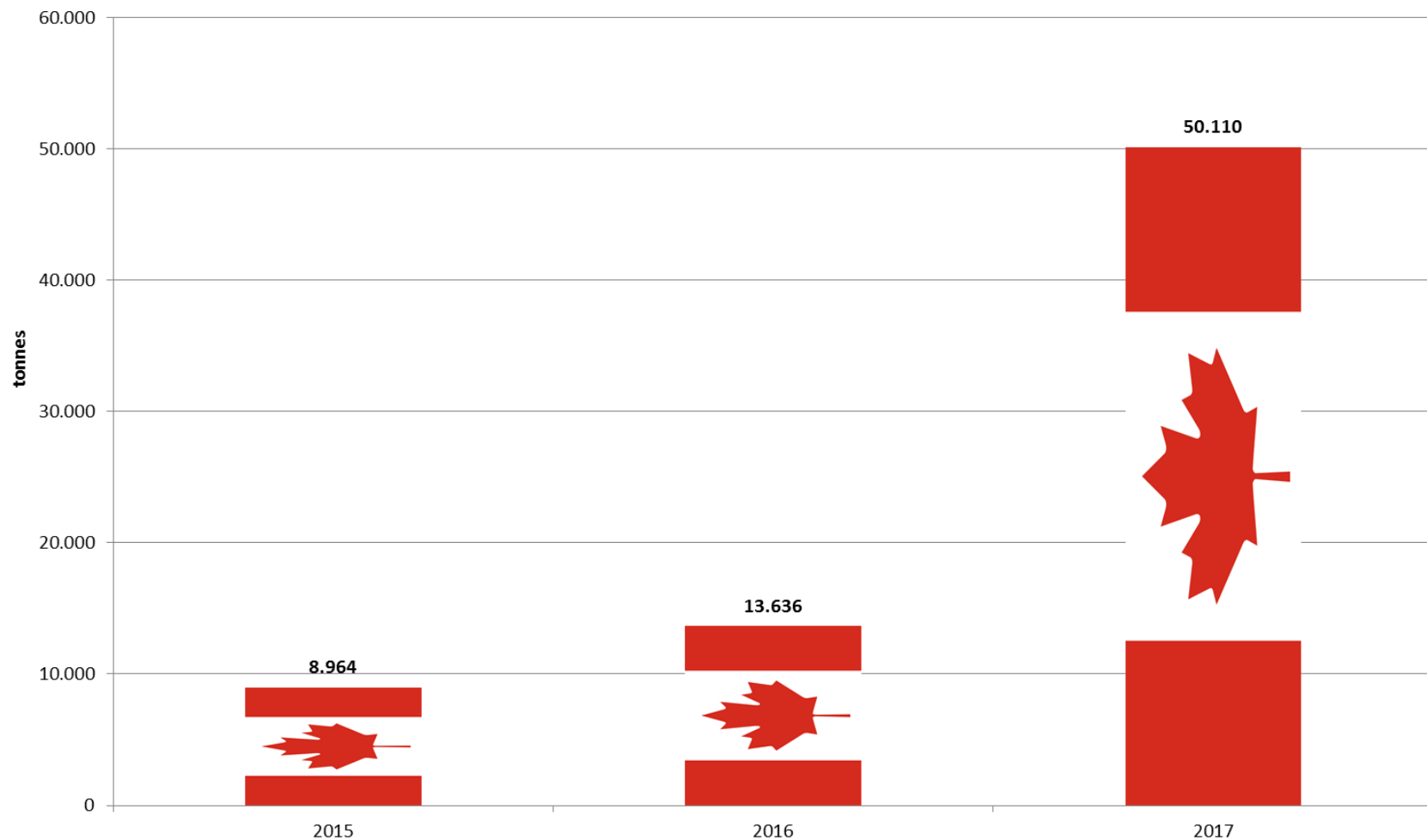
Canada SMP exports
2017 vs 2016



Canada SMP exports



Canada SMP exports *Cumulated Jan-Aug*



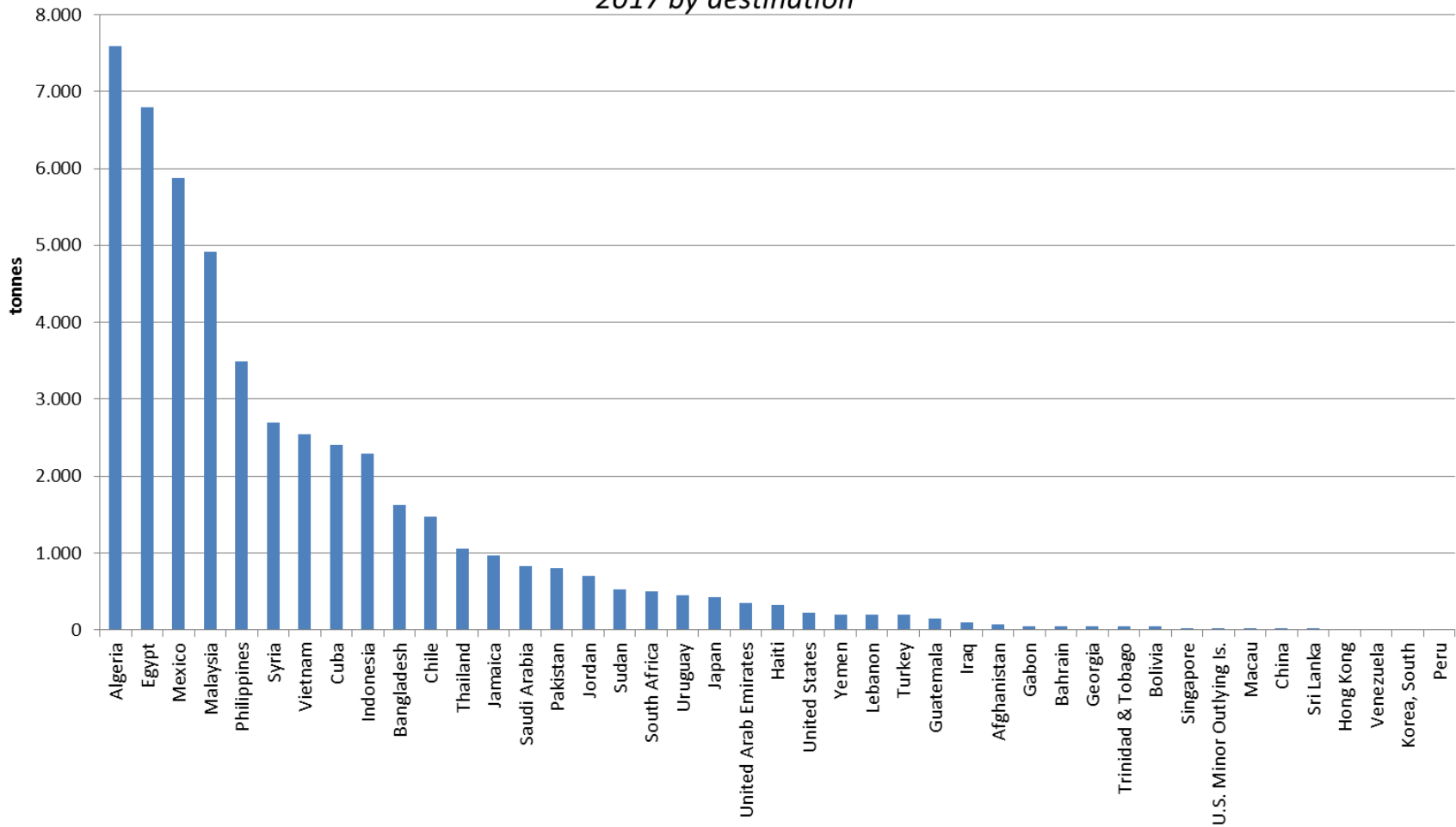
Canada SMP exports



Flow Prod Reporting Country

Sum of Q_T

Canada SMP exports 2017 by destination



Partner Country

Canada MPC imports



Subheading 0404 90 includes '**milk permeate**' which is a product with generally a milky smell obtained from milk by ultrafiltration or other processing techniques.

Subheading 3504 00 10 covers concentrated **milk proteins** with a protein content of more than 85 % by weight, calculated on the dry matter

