

PRICE DASHBOARD

No 122 – July 2022 edition

This price dashboard provides a monthly summary of price data for the most representative agricultural inputs, agricultural products and consumer food prices, at EU and world level. Although not all the products are comparable at both EU and world level, this document is intended to give an indication on the most recent price developments.

Date of publication: 23.08.2022

AGRICULTURAL COMMODITY PRICES – July 2022

Agricultural Commodity	EUROPEAN UNION 27			WORLD			
	Monthly average	Annual change	Monthly change	Monthly average		Annual change	Monthly change
CEREALS ⁽¹⁾	EUR/T	%	%	USD/T	EUR/T	%	%
Soft wheat	346	68.5%	-10.8%	311 ⁽²⁾	305	23.7%	-18.2%
Durum wheat	516	87.7%	-0.4%	383 ⁽³⁾	376	31.5%	-16.7%
Maize	325	24.6%	-3.5%	306	301	9.8%	-8.8%
Barley	299	51.3%	-13.6%	319	313	50.5%	-15.2%
MEAT							
Beef	4,911	27.8%	0.4%	5,840	5,738	4.6%	-2.4%
Pork	1,931	25.8%	2.5%	2,721 ⁽⁶⁾	2,673 ⁽⁶⁾	13.3%	4.9%
Poultry	2,595	26.7%	-0.2%	3,545	3,483	52.1%	-3.8%
DAIRY							
Butter	7,180	81.3%	-0.9%	5,629	5,530	24.9%	-7.1%
Cheese	4,567	43.6%	4.9%	5,150	5,059	23.2%	-3.9%
SMP	3,870	54.6%	-4.0%	3,913	3,844	21.1%	-8.3%
WMP	4,992	57.6%	-3.0%	3,829	3,762	-2.6%	-5.7%
OILSEEDS							
Soya beans	:	:	:	618 ⁽⁵⁾	607	7.9%	-8.4%
Rapeseed	666 ⁽⁵⁾	26.2%	-10.3%	:	:	:	:
SUGAR							
White sugar	456 ⁽⁴⁾⁽⁵⁾	14.9%	0.9%	549	533	23.6%	-2.3%
RICE (milled)							
Japonica	1,240	64.2%	0.0%	1,490	1,464	35.5%	2.8%
Indica	1,030	39.2%	6.4%	402	395	2.3%	-5.3%

Notes:

Changes in world prices are based on prices expressed in USD.

1) EU cereal quotations: soft wheat and barley (delivered Rouen), durum wheat (Port-La-Nouvelle/La Palice) and maize (Bordeaux).

2-3) US Soft Red Winter Wheat and US Hard Red Winter Wheat.

4) Figures for previous month.

5) Preliminary price.

6) World pork price is represented by US, as it is the biggest world exporter after the EU.

For any comments and questions please contact us at the e-mail address AGRI-A2@ec.europa.eu

FOOD PRICE INDICES – July 2022

European Union, Eurostat index, 2005=100

EU-27 consumer food prices, index 2005=100	Monthly average	Annual change	Monthly change
FOOD	156.6	13.2%	1.0%
Bread and cereals	160.2	15.3%	1.7%
Meat	154.7	13.5%	1.0%
Milk, cheese and eggs	157.1	17.3%	3.3%
Fats and oils	197.8	31.6%	2.1%
Sugar	134.6	7.7%	1.6%

FAO index, 2002-2004=100

FAO food prices, index 2002-2004=100	Monthly average	Annual change	Monthly change
FOOD	140.9	13.1%	-8.6%
Cereals	147.3	16.6%	-11.5%
Meat	124.0	8.7%	-0.5%
Dairy	146.4	25.4%	-2.5%
Fats and oils	171.1	10.1%	-19.2%
Sugar	112.8	3.0%	-3.8%

World Bank index, 2010=100

World Bank commodity prices, index 2010=100	Monthly average	Annual change	Monthly change
FOOD	138.6	13.4%	-8.5%
Oils and meals	135.3	7.3%	-13.1%
Grains	144.8	18.0%	-8.3%
Other food	137.3	17.6%	-1.9%

AGRICULTURAL INPUT PRICES

Agricultural input index 2010=100	Monthly average	Annual change	Monthly change
ENERGY	168.6	71.5%	-1.3%
Crude oil, Brent (USD/bbl)	108.9	46.4%	-9.3%
Crude oil, WTI (USD/bbl)	99.9	37.8%	-12.9%
Natural gas, Europe (USD/mmbtu)	51.3	310.3%	53.0%
Natural gas, US (USD/mmbtu)	7.3	90.8%	-5.4%
FERTILIZERS	213.1	67.8%	-3.7%
Phosphate rock (USD/mt)	320.0	156.0%	11.3%
Diammonium phosphate (USD/mt)	784.0	27.9%	0.0%
Potassium chloride (USD/mt)	562.5	177.8%	0.0%
Triple superphosphate (USD/mt)	736.0	32.6%	-1.4%
Urea (USD/mt)	601.0	36.1%	-12.9%

Please refer to Annex 1 and 2 for detailed data and graphs on EU price developments (for agricultural commodities and food) and commodity world quotations, as well as a description of the data used and their sources.

Annex 1

Agricultural commodity prices

Chart 1. Monthly and annual changes in agricultural commodity prices in EU-27
(%, July 2022 compared to June 2022 and to July 2021)

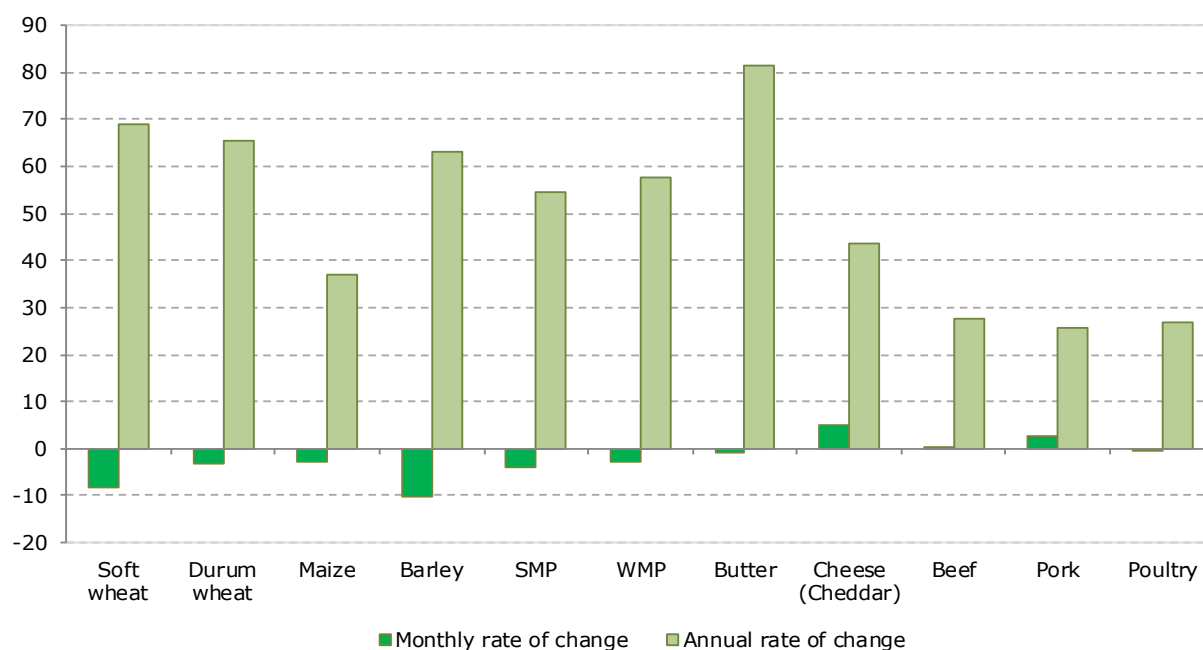


Table 1. Monthly changes in agricultural commodity prices in EU-27
(%, July 2022 compared to June 2022)

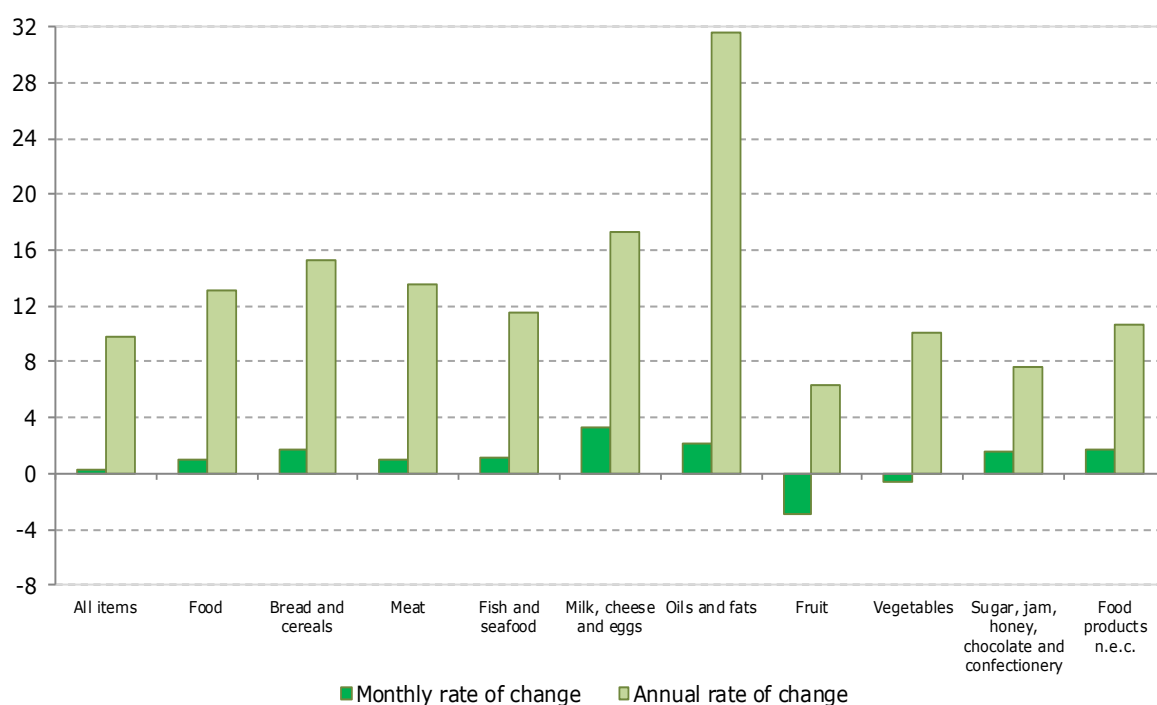
	Soft wheat	Durum wheat	Maize	Barley	SMP	WMP	Butter	Cheese (Cheddar)	Beef	Pork	Poultry
EU 27	-8.3	-3.3	-2.9	-10.0	-4.0	-3.0	-0.9	4.9	0.4	2.5	-0.2
Belgium	-1.2		-4.8	-13.7	-1.9	-4.4	-2.7		1.4	1.7	-2.4
Bulgaria	-10.2		-7.2	-9.1						2.0	-0.5
Czechia	-3.1				8.3	15.2	7.9		-2.3	1.2	1.0
Denmark			0.0	0.0					4.8	1.0	
Germany	-11.5		-7.6	-16.7	-3.5	-2.0	-2.9		4.3	1.8	0.7
Estonia	-14.8			-17.3			-0.6			1.0	
Ireland				-10.6	-1.3	-0.2	2.3	6.3	-5.7	5.4	2.8
Greece	6.1	-6.9	-1.9	-2.8					-4.9	5.8	-12.6
Spain	-6.7	-3.3	-4.3	-7.7			2.0		-0.1	-0.4	5.6
France	-11.3	-0.9	-5.8	-15.7					-0.3	6.8	0.6
Croatia	-12.1		-5.5	-7.2					-1.6	1.3	4.2
Italy	-8.4	-6.3	-0.5	-0.7			-1.0		-1.1		-3.9
Cyprus			-0.6	-5.8						-0.7	0.1
Latvia	-23.1			-19.8					6.0	3.3	
Lithuania	-6.3			-22.6					-6.0	5.4	-1.9
Luxembourg										2.3	
Hungary	-3.1		1.8	-5.7						3.4	3.4
Malta									2.4	0.5	0.0
Netherlands			-4.7	-12.3	-6.1	-7.1	-2.0		-1.2	4.0	0.0
Austria	-3.7	1.0	-3.3	-10.8					0.9	2.1	1.6
Poland	-8.2		-3.7	-14.4	-0.7	2.9	-0.1		-4.7	1.0	-4.3
Portugal	-2.7	6.6	-13.4	-9.1					-1.6	4.1	-0.2
Romania	-6.5		-7.2	1.5					3.6	3.2	-1.0
Slovenia	-10.9		4.9						0.3	1.3	1.4
Slovakia	-7.1		9.4				-0.3		-0.1	3.6	1.9
Finland	-11.4			-12.2					2.5	2.1	1.2
Sweden	-7.1								1.4	3.4	-0.4

**Table 2. Annual changes in agricultural commodity prices in EU-27
(%, July 2022 compared to July 2021)**

	Soft wheat	Durum wheat	Maize	Barley	SMP	WMP	Butter	Cheese (Cheddar)	Beef	Pork	Poultry
EU 27	69.1	65.4	37.1	63.2	54.6	57.6	81.3	43.6	27.8	25.8	26.7
Belgium	55.5		24.4	42.9	55.9	55.7	82.8		38.2	31.6	25.9
Bulgaria	80.1		43.5	79.1						10.7	36.7
Czechia	75.5			61.3	54.6	54.2	53.2		25.9	24.4	37.7
Denmark									48.0	5.4	
Germany	57.1		26.5	45.5	59.0	63.7	79.5		23.3	27.5	29.0
Estonia	104.0			67.1			68.9			14.7	
Ireland				48.0	55.0	55.9	87.3	62.8	17.8	17.9	13.2
Greece	92.6	82.9	79.6	60.7					4.3	28.0	-13.7
Spain	62.8	60.2	35.8	64.0			78.3		33.4	21.7	37.9
France	68.2		20.3	52.0					34.3	27.3	27.7
Croatia	68.3		43.2	58.8					32.1	22.2	35.5
Italy	64.9	57.8	37.9	58.6			82.9		26.1		26.5
Cyprus			42.8	72.1						11.5	3.3
Latvia	54.5			57.7					26.2	35.9	
Lithuania	85.7			58.6					41.2	39.3	21.0
Luxembourg										27.4	
Hungary	84.6		39.3	68.5						28.9	44.5
Malta											38.5
Netherlands			40.8	56.4					37.8	22.6	0.0
Austria	61.9	76.5	23.3	59.4					20.3	22.2	23.7
Poland	59.1		33.7	45.2	50.6	60.0	77.7		34.7	33.9	22.6
Portugal	78.6	99.3	27.3	60.7					25.4	27.2	46.0
Romania	84.0		42.4	78.6					24.3	36.7	36.2
Slovenia	66.9		55.1						29.6	18.4	23.2
Slovakia	72.4		46.0	76.5			49.7		33.3	33.1	33.4
Finland	65.4			79.4					25.8	32.9	11.0
Sweden	64.8								12.6	19.1	30.1

Food consumer prices

**Chart 2. Monthly and annual changes in food consumer prices in EU-27
(%, July 2022 compared to June 2022 and to July 2021)**



**Table 3. Monthly changes in food consumer prices in EU-27
(%, July 2022 compared to June 2022)**

	All items	Food	Bread and cereals	Meat	Fish and seafood	Milk, cheese and eggs	Oils and fats	Fruit	Vegetables	Sugar, jam, honey, chocolate and confectionery	Food products n.e.c.
European Union 27	0.2	1.0	1.7	1.0	1.1	3.3	2.1	-2.9	-0.6	1.6	1.7
Belgium	-0.6	13	16	18	-11	2.9	17	-13	-0.4	2.4	16
Bulgaria	0.8	0.1	-4.3	0.5	-0.4	2.2	0.6	2.4	-18	2.7	0.6
Czechia	13	14	12	17	3.1	2.1	6.5	-0.1	-2.7	16	0.2
Denmark	12	3.4	2.7	2.0	4.3	6.1	13.4	11	3.0	16	2.7
Germany	0.8	2.2	2.4	0.5	14	8.0	13	-0.8	0.9	0.5	2.8
Estonia	2.1	19	2.6	11	0.8	2.2	2.7	0.4	3.1	17	2.4
Ireland	0.4	16	2.1	2.0	0.3	3.5	19	0.1	0.4	19	10
Greece	-1.6	-10	14	12	0.5	17	2.7	-15.1	0.8	0.1	17
Spain	-0.6	0.2	14	11	0.9	16	-0.9	-5.7	0.2	10	13
France	0.3	10	11	15	11	2.1	2.7	-16	0.0	0.8	13
Croatia	14	2.2	13	3.3	2.9	6.3	3.3	-0.6	-2.7	0.4	2.6
Italy	-11	0.1	17	0.4	0.8	2.0	11	-6.6	-12	15	12
Cyprus	17	16	15	0.5	2.1	19	4.9	0.6	2.3	2.9	0.1
Latvia	2.2	16	3.6	2.4	-0.6	13	4.1	-2.0	-12	0.9	3.2
Lithuania	0.8	0.6	3.2	13	15	16	2.1	-3.3	-5.5	0.4	2.0
Luxembourg	-13	0.8	11	0.2	-0.6	18	3.0	-14	2.7	13	0.4
Hungary	2.4	4.3	111	2.7	3.4	4.8	3.5	-0.7	-2.2	5.3	5.2
Malta	0.9	18	13	0.8	0.0	4.7	2.2	2.2	2.4	0.6	0.4
Netherlands	2.2	15	13	0.3	13	2.7	5.2	-0.6	18	3.1	19
Austria	0.6	0.7	0.5	0.3	12	10	0.4	-0.5	0.6	2.5	14
Poland	0.4	0.4	16	0.7	18	2.3	2.5	-19	-5.5	2.8	17
Portugal	0.0	0.8	11	0.8	0.4	11	-3.1	13	2.6	12	-0.6
Romania	0.5	0.8	10	0.8	11	17	3.6	16	-18	12	11
Slovenia	0.9	0.2	0.7	0.7	12	0.9	12	-2.6	-14	10	15
Slovakia	0.6	14	3.3	15	19	17	3.9	-15	-3.6	19	2.8
Finland	0.2	14	2.8	0.2	2.0	3.2	2.2	-15	13	2.4	0.5
Sweden	-0.2	3.3	2.4	15	6.5	5.8	8.4	-15	4.3	2.8	3.3

**Table 4. Annual changes in food consumer prices in EU-27
(%, July 2022 compared to July 2021)**

	All items	Food	Bread and cereals	Meat	Fish and seafood	Milk, cheese and eggs	Oils and fats	Fruit	Vegetables	Sugar, jam, honey, chocolate and confectionery	Food products n.e.c.
European Union 27	9.8	13.2	15.3	13.5	11.6	17.3	31.6	6.4	10.1	7.7	10.7
Belgium	10.4	10.0	11.7	9.6	10.8	13.8	21.2	4.2	6.8	7.6	8.7
Bulgaria	14.9	24.9	28.8	20.6	16.1	29.3	44.2	115	210	24.1	27.2
Czechia	17.3	20.3	25.4	21.6	9.9	22.4	53.1	4.2	7.7	15.0	18.0
Denmark	9.6	15.6	14.3	18.0	15.9	24.5	49.3	6.6	10.8	6.2	9.2
Germany	8.5	14.5	14.9	18.3	11.5	23.8	44.4	3.2	7.7	4.1	10.9
Estonia	23.2	20.3	22.4	21.2	39.3	27.2	31.2	6.7	11.0	12.5	24.4
Ireland	9.6	8.1	9.6	11.1	5.4	13.4	17.0	2.6	3.0	3.9	6.0
Greece	11.3	13.0	16.7	16.6	3.5	16.4	27.1	-0.2	13.3	5.0	9.3
Spain	10.7	13.9	17.9	10.9	10.8	17.3	28.6	13.6	13.9	7.9	14.0
France	6.8	7.3	7.6	8.8	10.9	7.9	21.2	2.8	5.1	4.3	5.4
Croatia	12.7	19.0	25.4	18.4	16.0	27.1	25.4	5.6	11.9	13.5	16.3
Italy	8.4	10.3	12.5	8.6	9.3	10.0	21.4	8.5	10.4	7.7	7.2
Cyprus	10.6	8.6	13.8	12.0	11.6	8.2	32.3	-8.4	6.6	7.4	8.3
Latvia	21.3	24.7	28.7	20.1	22.9	33.5	36.0	13.2	12.4	25.9	26.0
Lithuania	20.9	29.8	32.8	21.8	19.4	44.1	42.9	7.5	36.0	17.4	30.6
Luxembourg	9.3	8.0	9.6	10.6	8.2	8.3	15.9	-0.4	5.9	4.6	4.5
Hungary	14.7	29.7	44.4	25.8	24.6	41.0	32.3	13.2	15.8	16.3	29.0
Malta	6.8	12.7	13.0	15.5	15.0	15.1	21.4	9.8	5.8	8.5	7.7
Netherlands	11.6	12.3	9.2	16.1	12.5	17.3	31.4	6.7	9.0	9.4	9.4
Austria	9.4	12.1	11.2	14.0	10.7	17.4	25.1	5.0	12.5	3.8	8.5
Poland	14.2	14.6	19.2	17.3	17.7	19.7	37.8	9.3	6.4	10.9	9.6
Portugal	9.4	14.3	16.1	17.7	12.9	13.5	33.9	4.3	14.7	6.0	10.1
Romania	13.0	17.0	23.9	13.2	15.9	16.3	42.3	5.3	21.4	12.6	10.9
Slovenia	11.7	13.3	15.8	14.3	7.9	14.9	32.7	15.2	6.8	4.8	10.1
Slovakia	12.8	19.9	23.4	20.1	12.4	21.8	52.4	7.0	12.6	12.2	20.0
Finland	8.0	12.0	10.7	16.6	24.7	15.6	16.1	6.1	13.5	7.1	5.5
Sweden	8.3	14.0	13.6	17.2	16.1	21.4	25.1	6.4	14.4	5.6	10.1

Chart 3. Cereals/bread and cereals based products: EU agricultural market and consumer price developments
(January 2000 until July 2022, 2000=100)

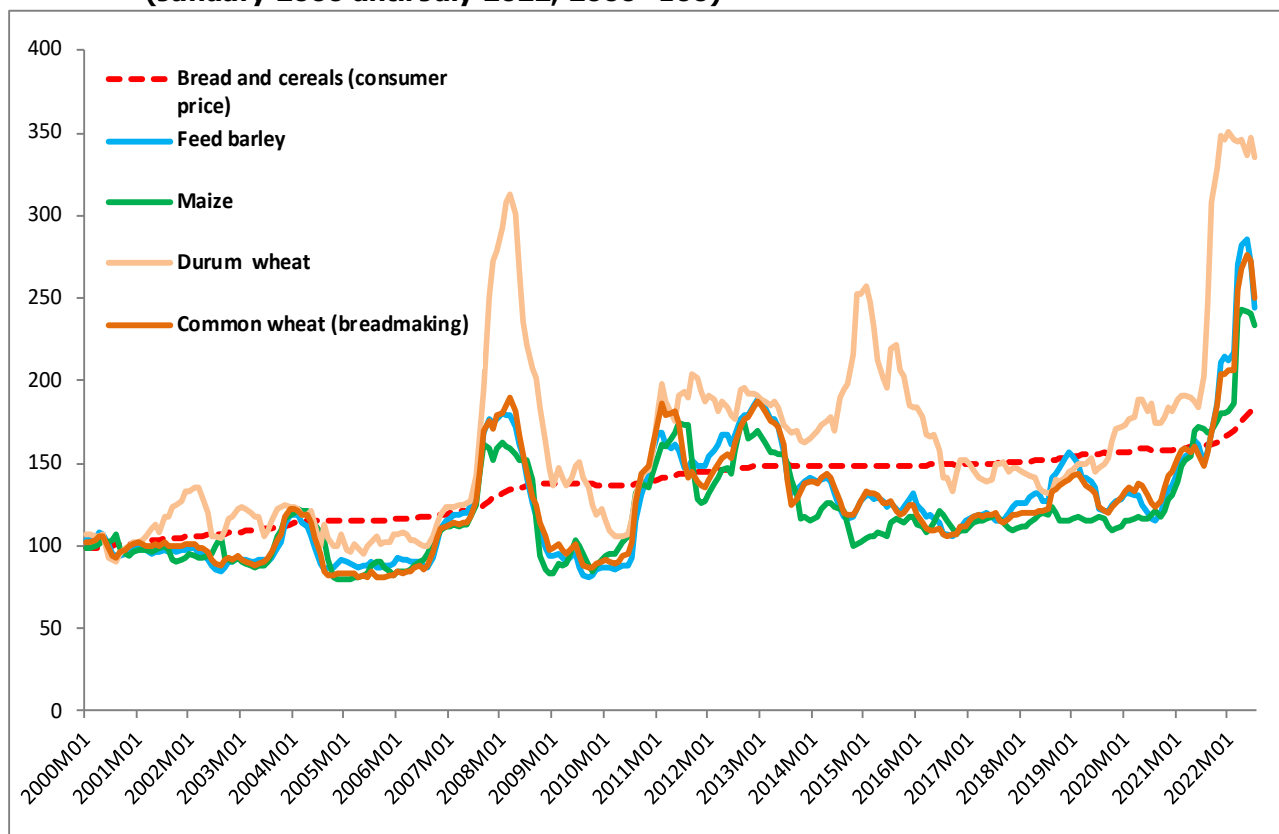
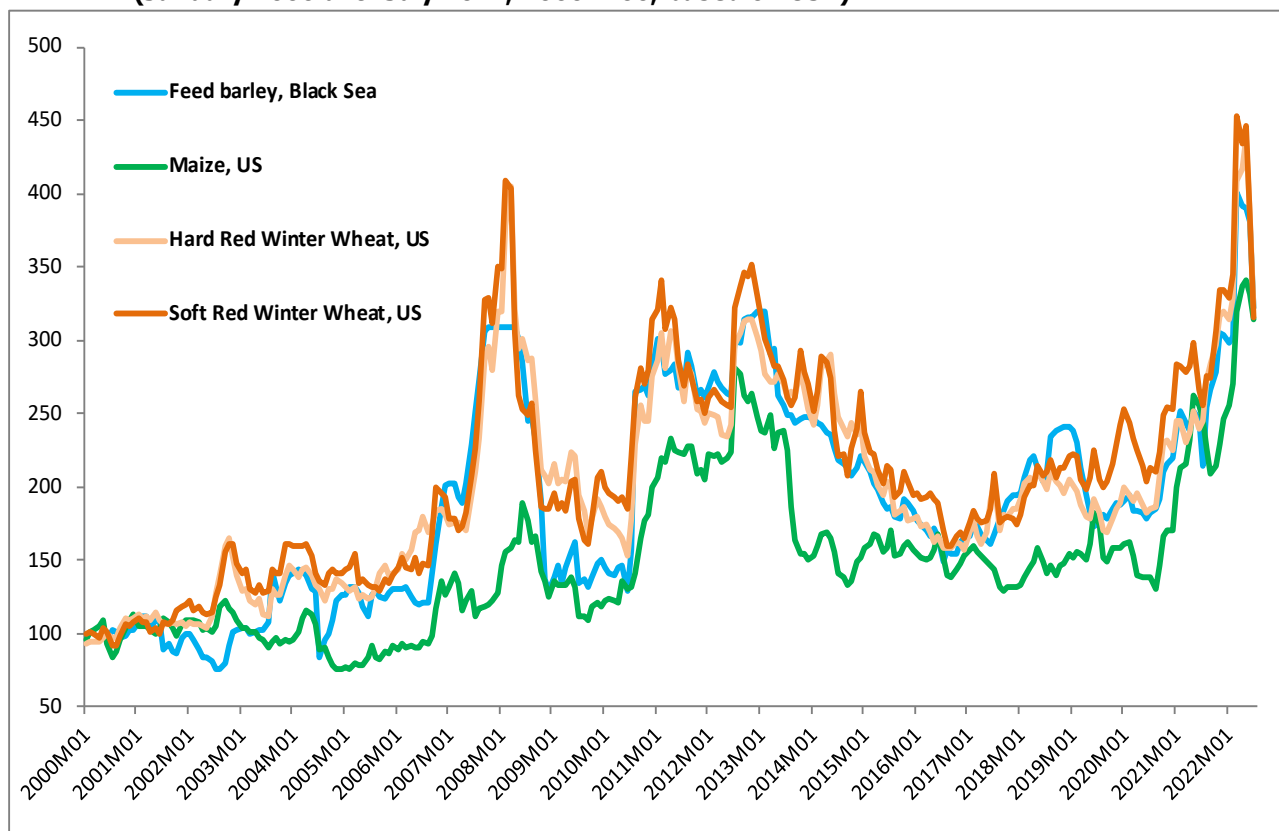
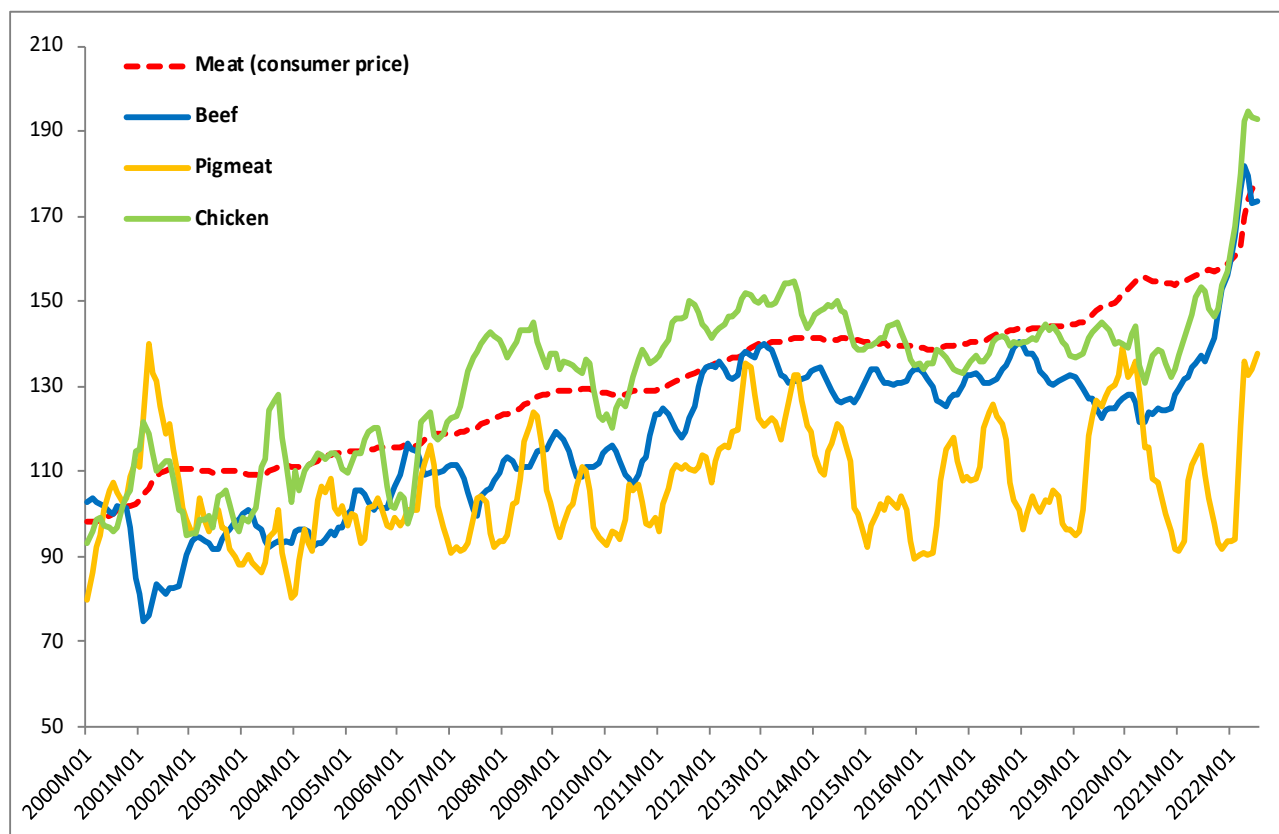


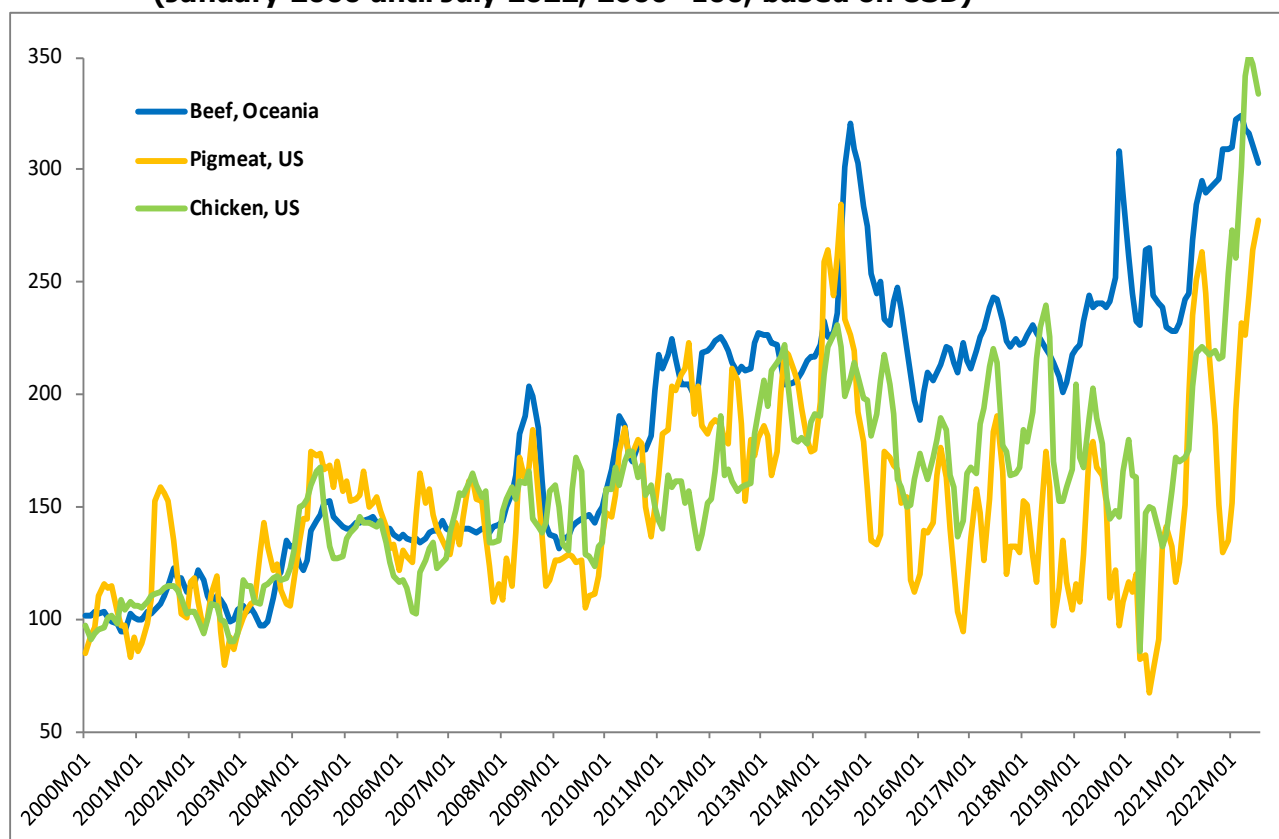
Chart 4. Cereals: international price developments
(January 2000 until July 2022, 2000=100, based on USD)



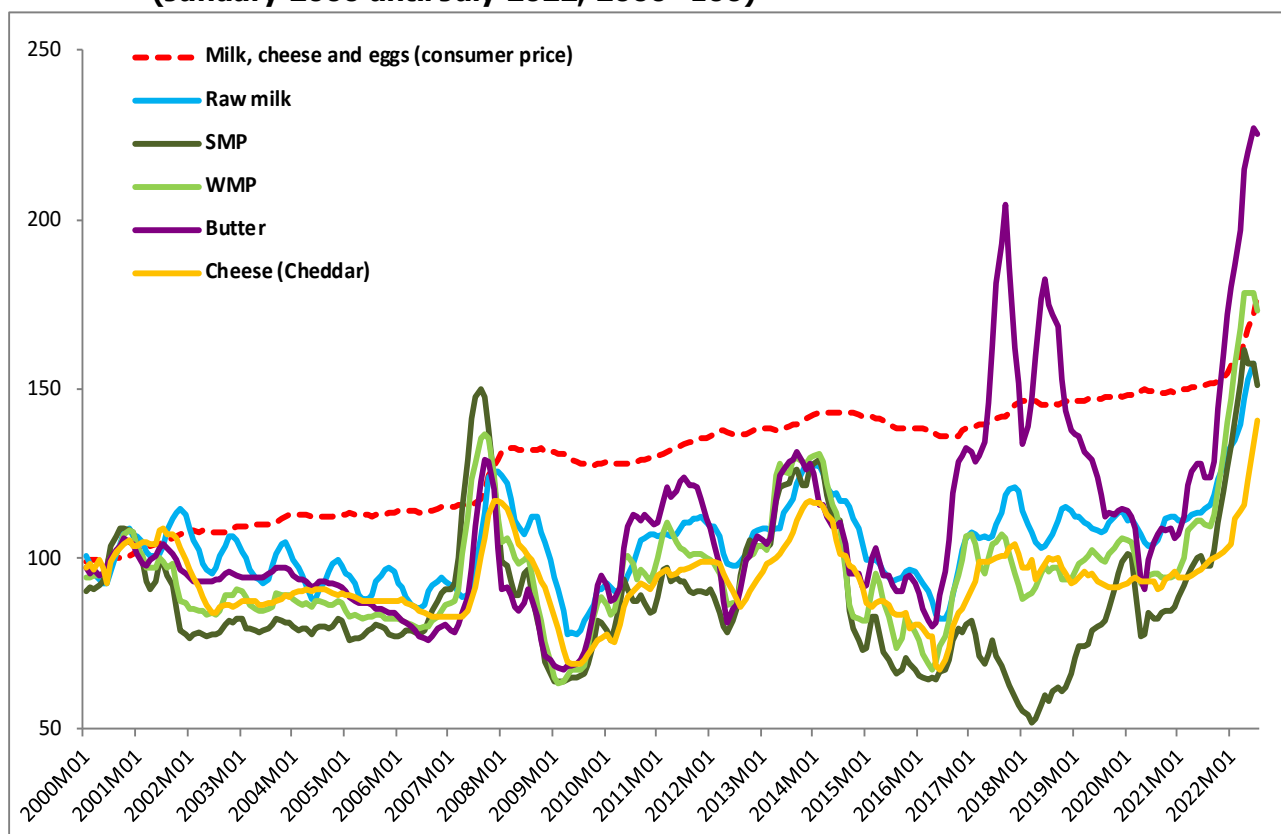
**Chart 5. Meat: EU agricultural market and consumer price developments
(January 2000 until July 2022, 2000=100)**



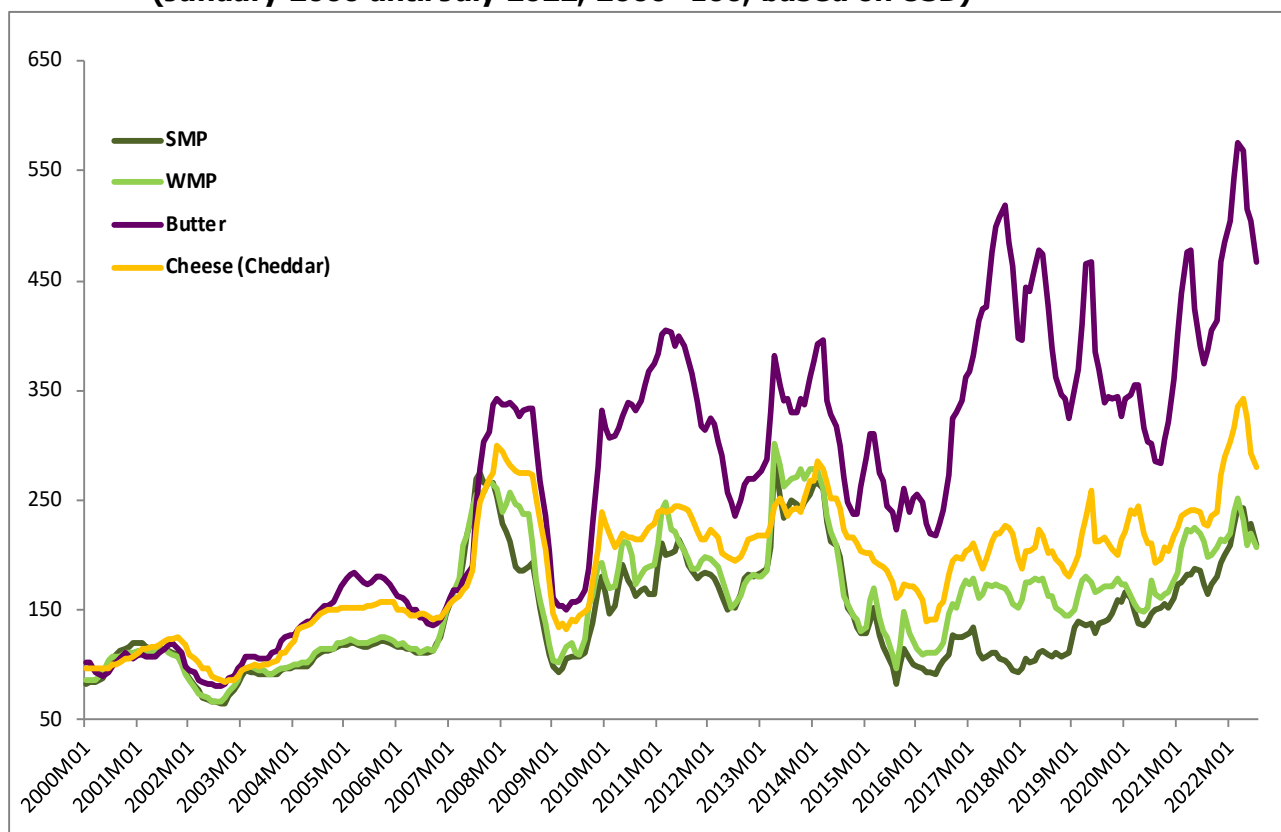
**Chart 6. Meat: international price developments
(January 2000 until July 2022, 2000=100, based on USD)**



**Chart 7. Dairy: EU agricultural market and consumer price developments
(January 2000 until July 2022, 2000=100)**



**Chart 8. Dairy: international price developments (Oceania)
(January 2000 until July 2022, 2000=100, based on USD)**



Annex 2

Description of the price series used

PRICES IN ABSOLUTE TERMS

European Union

Unless stated otherwise, all EU prices are averages for the current composition of 27 Member States, including prices before the date of the withdrawal of the UK from the EU.

A monthly average of absolute prices for plant, dairy and animal representative products (including their description) is published and available on the internet at: http://ec.europa.eu/agriculture/markets-and-prices/price-monitoring/monthly-prices/index_en.htm

As regards the cereal sector, representative market prices are used when comparing EU and World prices in page 1: Rouen (soft wheat and barley), Port-La-Nouvelle (durum wheat) and Bordeaux (maize).

EU pigmeat prices class E - change in definition following the implementation of the new single CMO regulation (as of 01.01.2014, more than 55% but less than 60% lean meat compared to 55% or more lean meat, until the before mentioned date) and a new class, S, became compulsory to cover pig carcasses with more than 60% lean meat.

Dairy - prices are based on MS notifications on the basis of which the EU weighted averages are calculated.

Rice - Japonica Italy and Indica Italy (DG Agriculture and Rural Development data based on EU Member States communications)

Sugar - white sugar (DG Agriculture and Rural Development based on EU sugar producers and refiners communications)

Rapeseed - CIF Hamburg, Europe "00" (USDA, OilWorld)

Sources: DG Agriculture and Rural Development (data communicated by EU Member States) and USDA Report on Oilseeds: World, markets and trade available at <https://apps.fas.usda.gov/psdonline/circulars/oilseeds.pdf>.

World

Wheat - US No.2, Hard Red Winter ord. Prot, US Fob Gulf (International Grain Council) and US No.2, Soft Red Winter Wheat, US Gulf (USDA)

Barley - Black Sea Feed fob (International Grain Council)

Maize - US no 2 Yellow Corn, export price fob Gulf (USDA)

Soya beans (US), c.i.f. Rotterdam (USDA, OilWorld)

Beef meat - Meat, beef (Australia/New Zealand), chucks and cow forequarters, frozen boneless, 85% chemical lean, c.i.f. U.S. port (East Coast), ex-dock, beginning November 2002; previously cow forequarters (World Bank)

Poultry meat - DG Agriculture and Rural Development calculation based on USDA weekly quotations for fresh chicken grade A, Chicago

Pigmeat - DG Agriculture and Rural Development calculation based on USDA weekly quotations for US "National Negotiated Swine. Weighted Average Price, Negotiated Carcass"

Butter - Oceania, indicative export prices, f.o.b. (AHDB calculated average of mid-point of price ranges reported bi-weekly, Dairy Market News, USDA)

Cheddar Oceania, indicative export prices, f.o.b. (AHDB average of mid-point of price ranges reported bi-weekly, Dairy Market News, USDA)

SMP Oceania, indicative export prices, f.o.b. (AHDB average of mid-point of price ranges reported bi-weekly, Dairy Market News, USDA)

WMP Oceania, indicative export prices, f.o.b. (AHDB average of mid-point of price ranges reported bi-weekly, Dairy Market News, USDA)

Rice - Japonica US Medium California 4% and Indica Thai Milled 5% Broken ("Creed market report"), simple average of weekly quotations

Sugar - London white sugar 05, nearby (closing), average of daily quotations (London International Financial Futures and Options Exchange)

Sources for world prices: World Bank (Commodity Price Data, Pink Sheet), FAO, USDA, OilWorld

<https://www.fao.org/giews/food-prices>

<https://www.worldbank.org/en/research/commodity-markets>.

AGRICULTURAL INPUT PRICES

Energy - Crude oil, UK Brent 38` API and US, West Texas Intermediate (WTI) 40` API; Natural gas (Europe) average import border price and a spot price component, beginning April 2010 including UK and Natural Gas (U.S.), spot price at Henry Hub, Louisiana.

Fertilizers - Diammonium phosphate, spot, f.o.b. US Gulf, Phosphate rock, f.o.b. North Africa, Potassium chloride (muriate of potash), spot, f.o.b. Vancouver, TSP (triple superphosphate), spot, import US Gulf, Urea, (Ukraine), f.o.b. Black Sea.

Source for input prices: World Bank (Commodity Price Data, Pink Sheet)

<https://www.worldbank.org/en/research/commodity-markets>.

FOOD PRICE INDICES

1. EU consumer food price indices

The EU consumer food price index measures the change over time of the prices of consumer goods and services acquired by households. The food products included in this index are those purchased for consumption at home and include the following categories: "bread and cereals", "meat", "milk, cheese and eggs", "oils and fats", and "sugar, jam, honey, chocolate and confectionery".

A detailed description of its composition can be found on Eurostat website at:

https://ec.europa.eu/eurostat/cache/metadata/en/prc_hicp_esms.htm.

2. FAO food price index

The FAO Food Price Index is a measure of the monthly change in international prices of a basket of food commodities. It consists of the average of five commodity group price indices (representing 55 quotations), weighted with the average export shares of each of the groups for 2002-2004.

A detailed description of its composition can be found at:

<http://www.fao.org/worldfoodsituation/foodpricesindex/en/>

3. World Bank food price index

The World Bank calculates commodity price indices for low and middle income countries (2010=100, 2002-2004 export value weights). The food index includes fats and oils, grains and other food (meat, sugar, etc) items.

A detailed description of its composition can be found at:

<http://www.worldbank.org/en/research/commodity-markets>