



BEEF & VEAL MARKET SITUATION



CDG Animal products – Beef and veal

8 March 2024

LIVESTOCK

JUNE SURVEY

EU EVOLUTION TOTAL BOVINE

May/Jun 1000 Hd	TOT LIVESTOCK				%Var 2023 2022	BOVINE < 1 Year				%Var 2023 2022	BOVINE 1-2 Year				%Var 2023 2022	BOVINE > 2 Year				%Var 2023 2022
	2020	2021	2022	2023		2020	2021	2022	2023		2020	2021	2022	2023		2020	2021	2022	2023	
BE	2.388	2.353	2.241	2.281	+1,8%	716	712	656	677	+3,2%	471	473	463	456	-1,5%	1.201	1.169	1.121	1.148	+2,4%
BG																				
CZ																				
DK	1.517	1.503	1.484	1.454	-2,1%	517	517	510	498	-2,4%	291	287	290	281	-2,9%	709	699	684	674	-1,4%
DE	11.423	11.176	10.986	10.937	-0,5%	3.410	3.398	3.296	3.260	-1,1%	2.683	2.591	2.620	2.595	-0,9%	5.330	5.188	5.071	5.082	+0,2%
EE																				
IE	7.314	7.359	7.396	7.341	-0,7%	2.117	2.146	2.134	2.074	-2,8%	1.807	1.910	1.949	1.922	-1,4%	3.390	3.303	3.313	3.346	+1,0%
EL																				
ES	6.715	6.923	6.754	6.529	-3,3%	2.488	2.634	2.569	2.410	-6,2%	930	973	902	926	+2,6%	3.297	3.316	3.283	3.192	-2,7%
FR	18.200	17.863	17.416	17.039	-2,2%	5.144	5.134	4.949	4.838	-2,2%	3.249	3.158	3.144	3.077	-2,2%	9.808	9.571	9.323	9.125	-2,1%
HR																				
IT	6.116	6.174	6.087	5.975	-1,8%	1.746	1.762	1.725	1.663	-3,6%	1.458	1.476	1.475	1.439	-2,4%	2.912	2.936	2.887	2.873	-0,5%
CY																				
LV																				
LT																				
LU																				
HU																				
MT																				
NL	3.766	3.732	3.766	3.749	-0,5%	1.558	1.523	1.546	1.506	-2,6%	446	479	493	506	+2,6%	1.762	1.729	1.726	1.736	+0,6%
AT	1.844	1.846	1.842	1.826	-0,9%	588	596	592	574	-3,1%	416	413	422	426	+0,9%	841	838	828	826	-0,2%
PL	6.344	6.401	6.444	6.354	-1,4%	1.729	1.789	1.916	1.855	-3,2%	1.796	1.856	1.674	1.670	-0,2%	2.819	2.756	2.855	2.828	-0,9%
PT	1.751	1.723	1.680	1.608	-4,3%	557	550	554	511	-7,9%	264	252	229	229	+0,2%	929	922	897	868	-3,3%
RO	1.915	1.864	1.852	1.833	-1,0%	418	386	379	370	-2,3%	217	207	220	224	+1,8%	1.280	1.271	1.254	1.239	-1,2%
SI																				
SK																				
FI																				
SE	1.453	1.453	1.449	1.444	-0,3%	462	465	458	458	+0,2%	362	369	374	371	-1,0%	629	619	617	615	-0,3%
EU	70.747	70.371	69.398	68.369	-1,5%	21.451	21.612	21.285	20.695	-2,8%	14.389	14.444	14.255	14.122	-0,9%	34.907	34.315	33.858	33.552	-0,9%

Source : EStat Newcronos

EU %Var is calculated considering only countries available in 2022 AND 2023

LIVESTOCK

JUNE SURVEY

EU EVOLUTION
TOTAL BOVINE

May/Jun 1000 Hd	TOTAL COWS				%Var 2023 2022	DAIRY COWS				%Var 2023 2022	OTHER COWS				%Var 2023 2022
	2020	2021	2022	2023		2020	2021	2022	2023		2020	2021	2022	2023	
BE	954	937	902	918	+1,7%	544	539	527	541	+2,7%	409	399	375	377	+0,4%
BG															
CZ															
DK	653	647	634	625	-1,4%	567	565	557	553	-0,7%	86	82	77	72	-6,7%
DE	4.609	4.517	4.430	4.399	-0,7%	3.969	3.892	3.817	3.775	-1,1%	640	626	612	623	+1,8%
EE															
IE	2.551	2.545	2.541	2.519	-0,9%	1.568	1.605	1.627	1.647	+1,2%	983	940	913	872	-4,5%
EL															
ES	2.927	2.987	2.951	2.878	-2,5%	810	828	816	791	-3,1%	2.117	2.159	2.135	2.087	-2,2%
FR	7.442	7.315	7.159	6.960	-2,8%	3.403	3.331	3.266	3.167	-3,0%	4.039	3.984	3.893	3.793	-2,6%
HR															
IT	2.130	2.161	2.130	2.123	-0,3%	1.844	1.852	1.821	1.798	-1,3%	286	309	309	325	+5,1%
CY															
LV															
LT															
LU															
HU															
MT															
NL	1.651	1.627	1.623	1.628	+0,3%	1.593	1.571	1.571	1.576	+0,3%	58	56	53	52	-1,4%
AT	716	715	710	704	-0,8%	523	531	549	546	-0,6%	193	184	161	158	-1,6%
PL	2.468	2.388	2.208	2.160	-2,2%	2.218	2.113	2.072	2.027	-2,2%	250	276	136	133	-1,7%
PT	757	757	742	718	-3,2%	239	236	227	224	-1,2%	517	521	515	494	-4,0%
RO	1.160	1.148	1.135	1.111	-2,1%	1.145	1.133	1.119	1.091	-2,4%	15	15	16	20	+23,5%
SI															
SK															
FI															
SE	510	512	510	506	-0,7%	303	302	297	295	-0,5%	207	210	213	211	-1,0%
EU	28.528	28.256	27.674	27.249	-1,5%	18.727	18.497	18.266	18.031	-1,3%	9.801	9.760	9.409	9.218	-2,0%

Source : EStat Newcronos

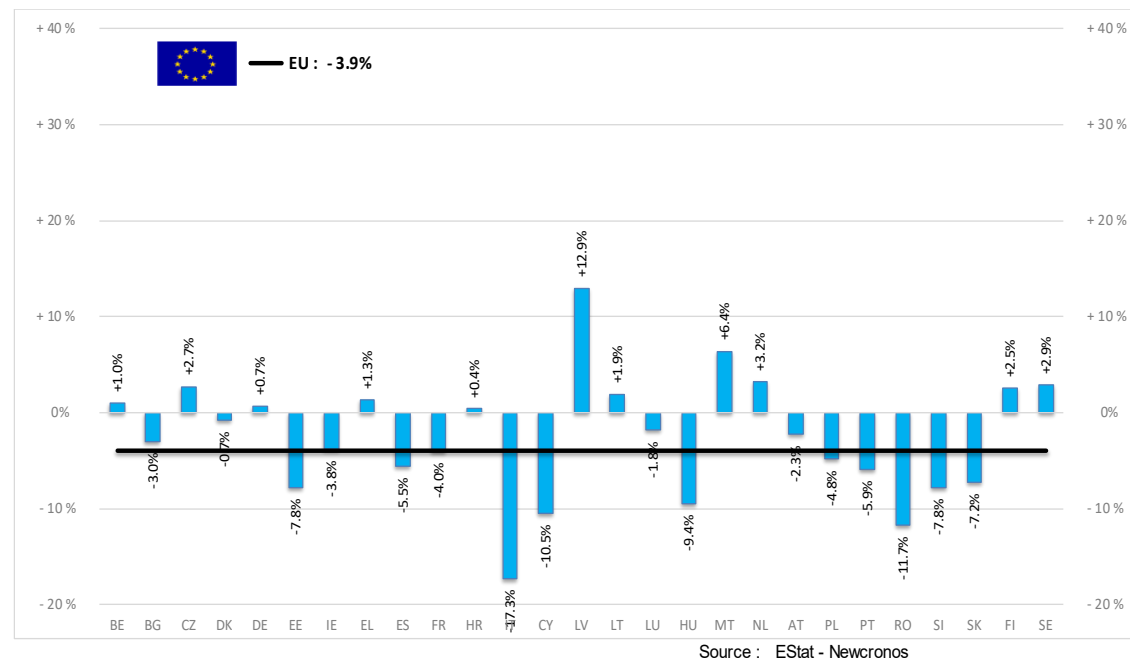
EU %Var is calculated considering only countries available in 2022 AND 2023

PRODUCTION % EVOLUTION

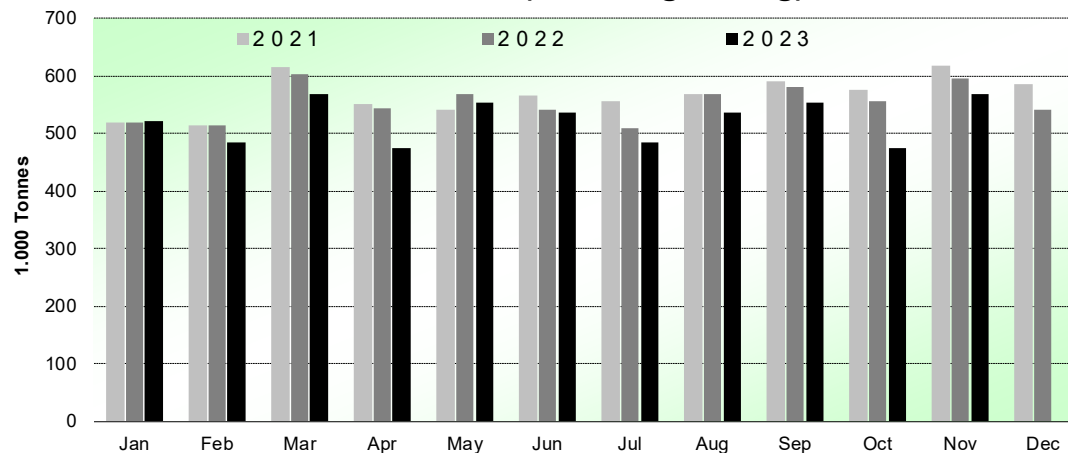
HEADS	Jan-Nov 23/22	TONNES	Jan-Nov 23/22
	EU		EU
Bull	-3.5%	Bull	-3.4%
Bullock	-3.1%	Bullock	-4.0%
Cow	-3.4%	Cow	-3.8%
Heifer	-3.0%	Heifer	-4.6%
Calve	-2.7%	Calve	-3.7%
Young cattle	-4.4%	Young cattle	-5.9%
Meat of bovine animals	-3.3%	Meat of bovine animals	-3.9%

Estimates for last month of period :

Estimates for last month of period :



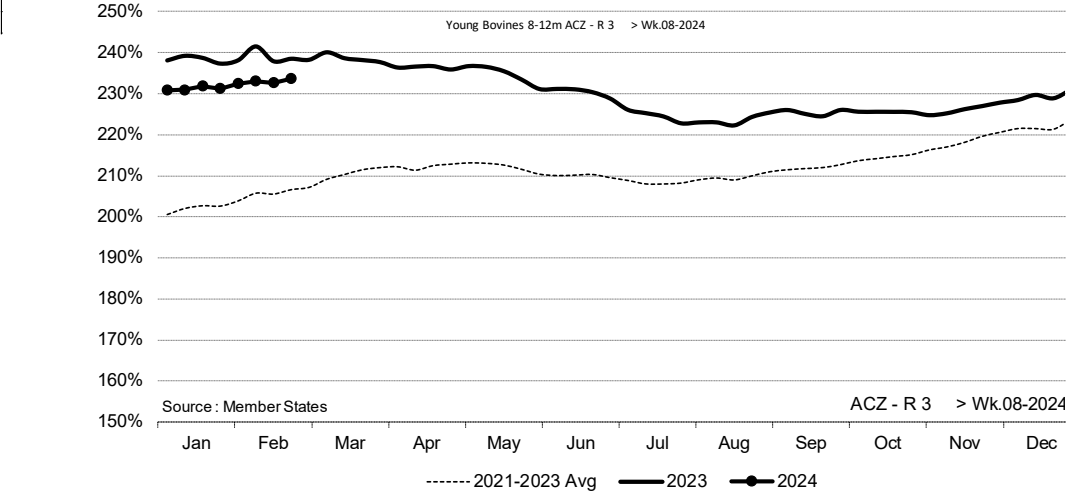
Beef & Veal Production (EU Slaughtering) - Tonnes



Source : EStat-Newcronos

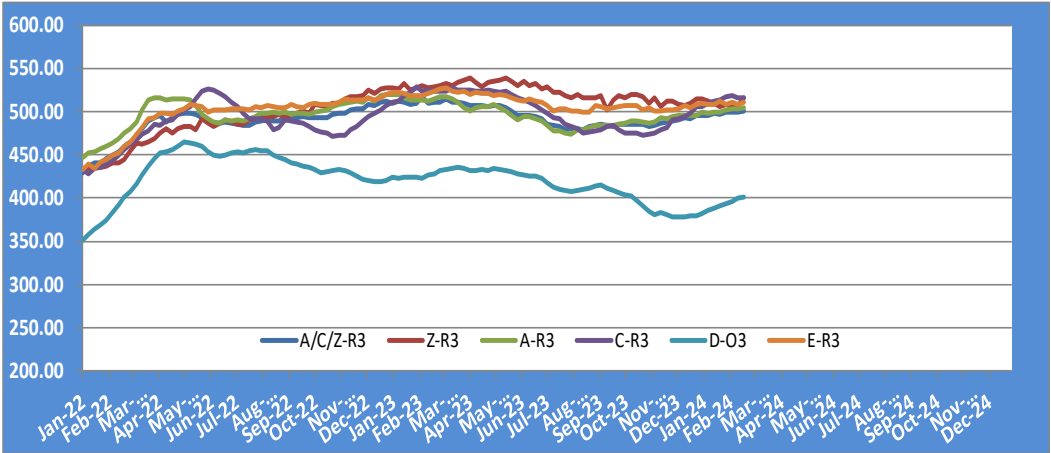
PRICES CARCASSES

EVOLUTION A/C/Z.R3



Price in week 08 :	501.19	Average price in January 2024 :	496.56
% change y/y :	- 1.91%	% change y/y :	- 2.76%
% Ref. Price in wk 0 :	229.7%		

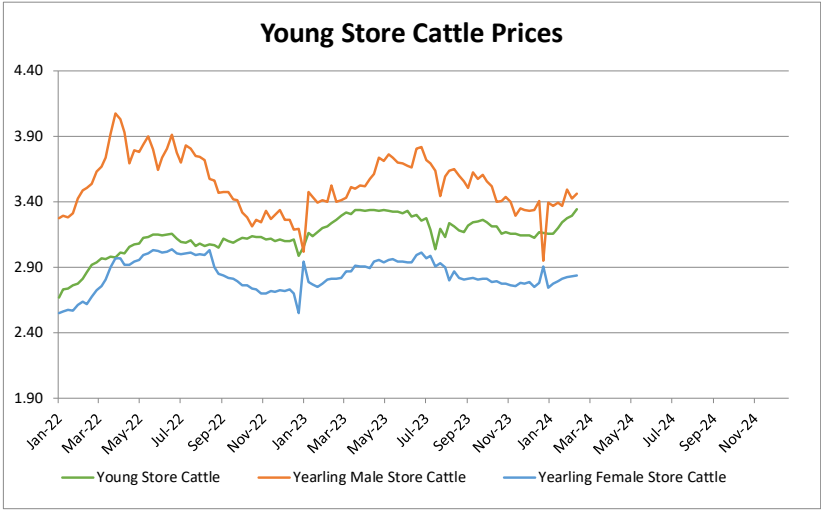
EU EVOLUTION All CAT GLOBAL VIEW



Sources : MSs notifications (Regulation (EU) 1182/2017 and 1184/2017

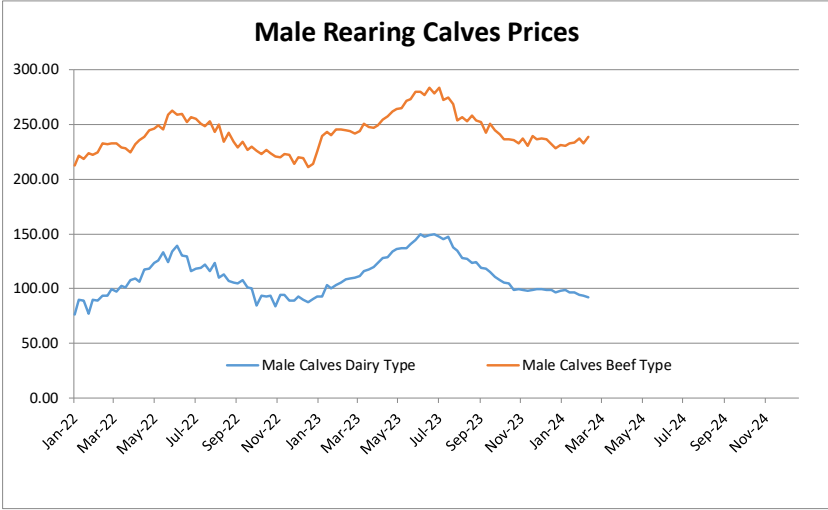
PRICES LIVE BOVINES AND CALVES

Store cattle (€/100 kg live weight)



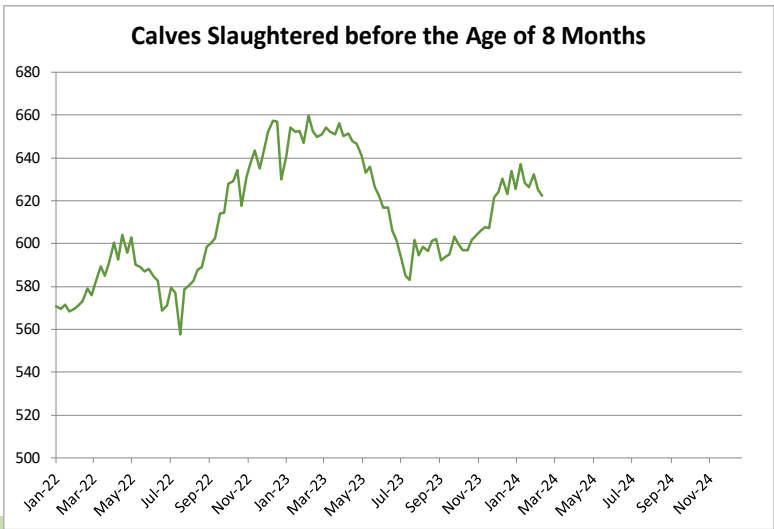
Young Store Cattle Price in	Week 8	3.34	Yearling Male Store Cattle Price	3.56
	Change y/y	+2.3%	Change y/y	+4.8%
Yearling Female Store Cattle Price		2.90		
	Change y/y	+3.3%		

Male calves aged between 8 days and 4 weeks (€/head)



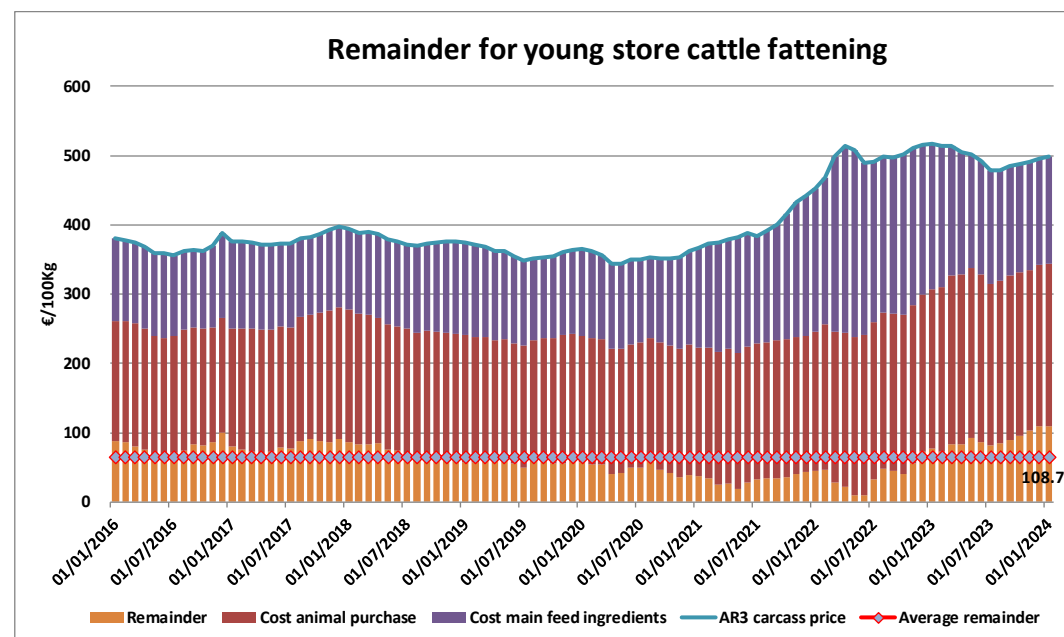
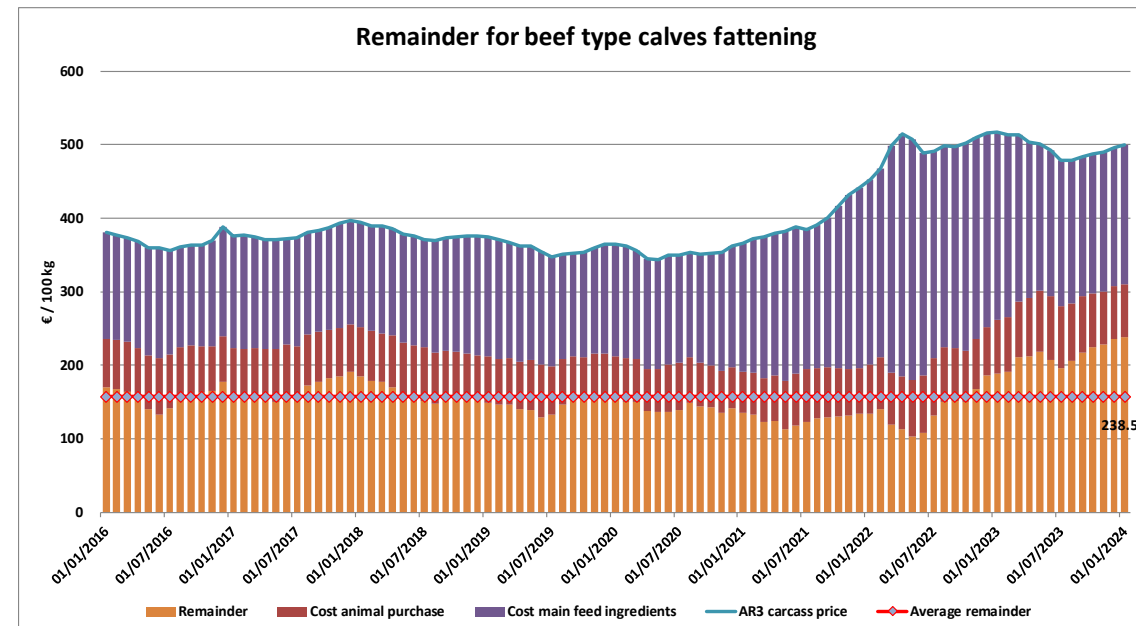
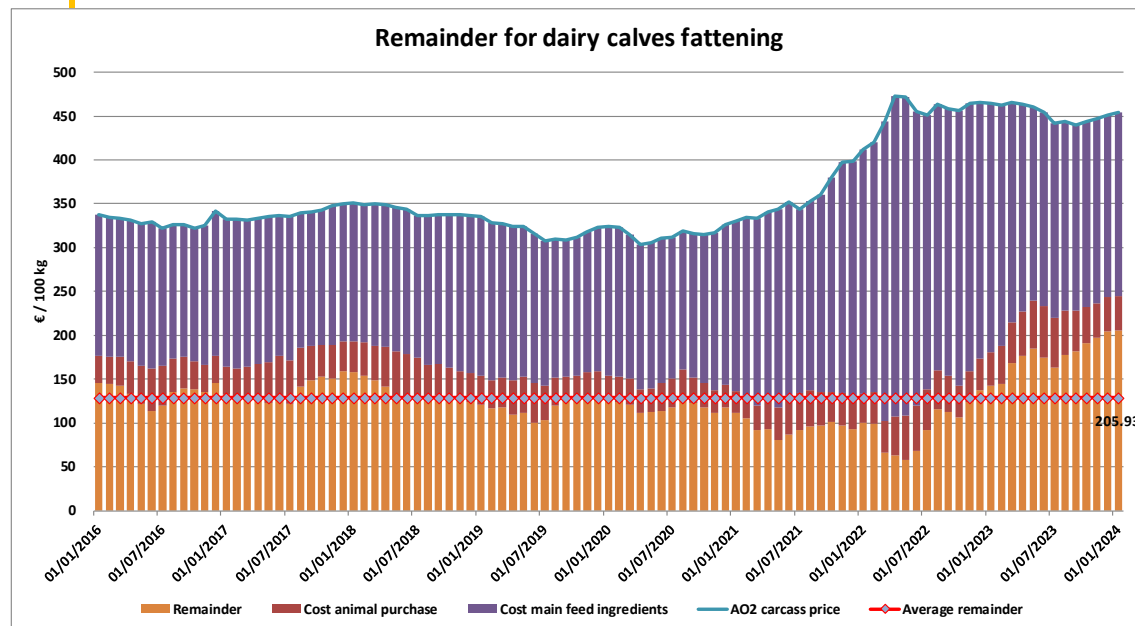
Male Rearing Calves Beef type	Male Rearing Calves Dairy type
Price in Week 8	Price in Week 8
229.81	93.43
Change y/y	Change y/y
-5.7%	-14.4%

Calves slaughtered less than 8 months (€/100 kg cw)



Price in Week 8	609.93 € / 100 kg of carcasse weight
Change y/y	-6.1%

REMAINDERS



EU Exports of Beef and Live Animals (excluding fats):

In Tons of Carcase Weight

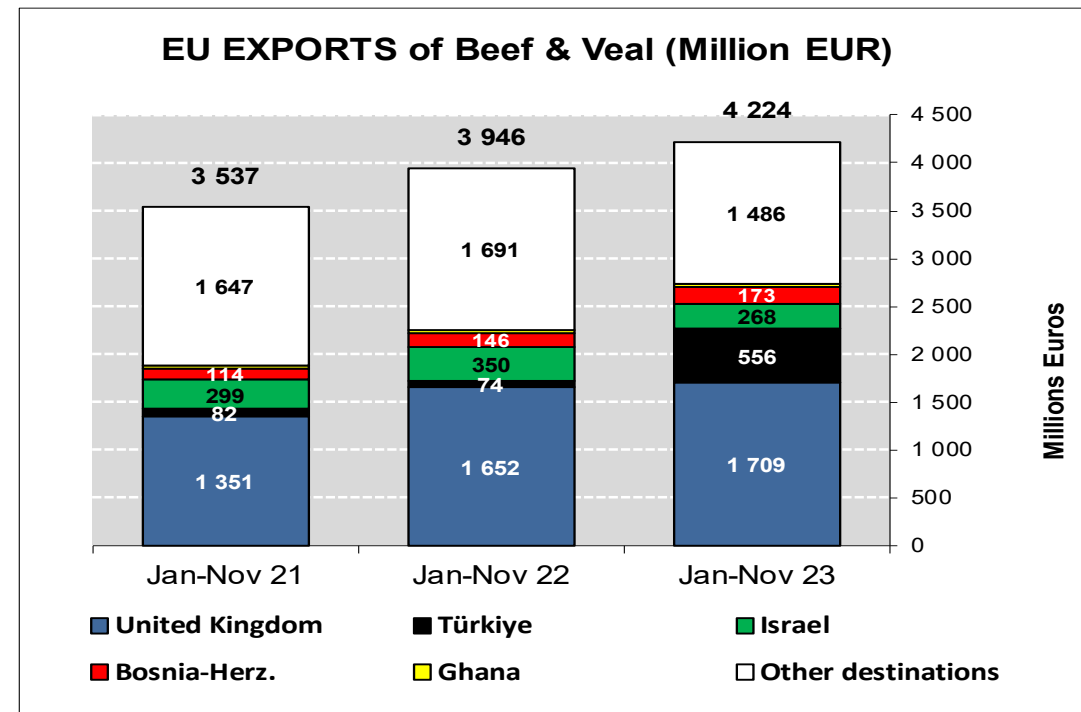
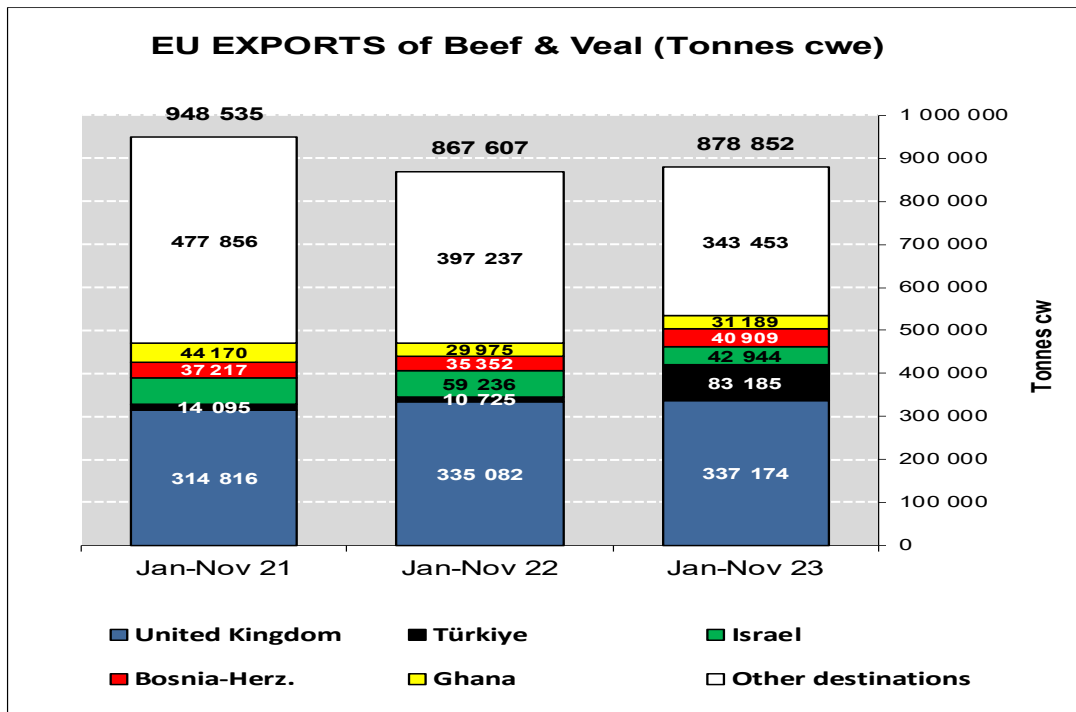
	2021		2022		Jan to Nov 2023		Compared to Jan to Nov 2022
	Tons	% Extra EU	Tons	% Extra EU	Tons	% Extra EU	
United Kingdom	344.633	33,4%	366.330	38,9%	337.174	38,4%	+0,6%
Türkiye	14.953	1,5%	14.168	1,5%	83.185	9,5%	+++
Israel	66.022	6,4%	63.618	6,7%	42.944	4,9%	-27,5%
Bosnia-Herz.	40.504	3,9%	38.796	4,1%	40.909	4,7%	+15,7%
Ghana	47.618	4,6%	32.171	3,4%	31.189	3,5%	+4,0%
Ivory Coast	29.187	2,8%	29.882	3,2%	27.777	3,2%	+0,9%
Morocco	11.868	1,2%	8.273	0,9%	24.743	2,8%	+++
Hong Kong	44.769	4,3%	10.570	1,1%	20.835	2,4%	+++
Kosovo	16.478	1,6%	17.069	1,8%	19.578	2,2%	+29,4%
Lebanon	19.527	1,9%	21.026	2,2%	18.973	2,2%	-7,9%
Switzerland	28.717	2,8%	24.958	2,6%	18.198	2,1%	-22,5%
Other Destinations	366.701	35,6%	315.634	33,5%	213.348	24,3%	-27,1%
Extra-EU	1.030.978		942.495		878.852		+1,3%
% Change				-8,6%			

In Thousand Euros

	2021		2022		Jan to Nov 2023		Compared to Jan to Nov 2022
	1 000 EUR	% Extra EU	1 000 EUR	% Extra EU	1 000 EUR	% Extra EU	
United Kingdom	1.495.332	38,4%	1.813.304	41,9%	1.709.347	40,5%	+3,5%
Türkiye	86.382	2,2%	101.973	2,4%	555.585	13,2%	+++
Israel	328.295	8,4%	377.934	8,7%	267.798	6,3%	-23,4%
Bosnia-Herz.	126.443	3,3%	161.208	3,7%	173.000	4,1%	+18,2%
Ghana	47.987	1,2%	35.528	0,8%	32.398	0,8%	-3,4%
Ivory Coast	25.645	0,7%	25.506	0,6%	23.890	0,6%	+1,6%
Morocco	60.639	1,6%	49.671	1,1%	147.063	3,5%	+++
Hong Kong	118.737	3,1%	33.184	0,8%	43.241	1,0%	+37,8%
Kosovo	43.776	1,1%	60.757	1,4%	80.973	1,9%	+52,1%
Lebanon	80.664	2,1%	110.119	2,5%	104.284	2,5%	-3,3%
Switzerland	171.272	4,4%	188.944	4,4%	138.624	3,3%	-21,2%
Other Destinations	1.304.359	33,5%	1.365.187	31,6%	948.261	22,4%	-24,2%
Extra-EU	3.889.531		4.323.316		4.224.464		+7,0%
% Change				+11,2%			

TRADE

EU EXPORTS Beef & Live Animals



EU Imports of Beef and Live Animals (Excl Fats):

In Tons of Carcase Weight

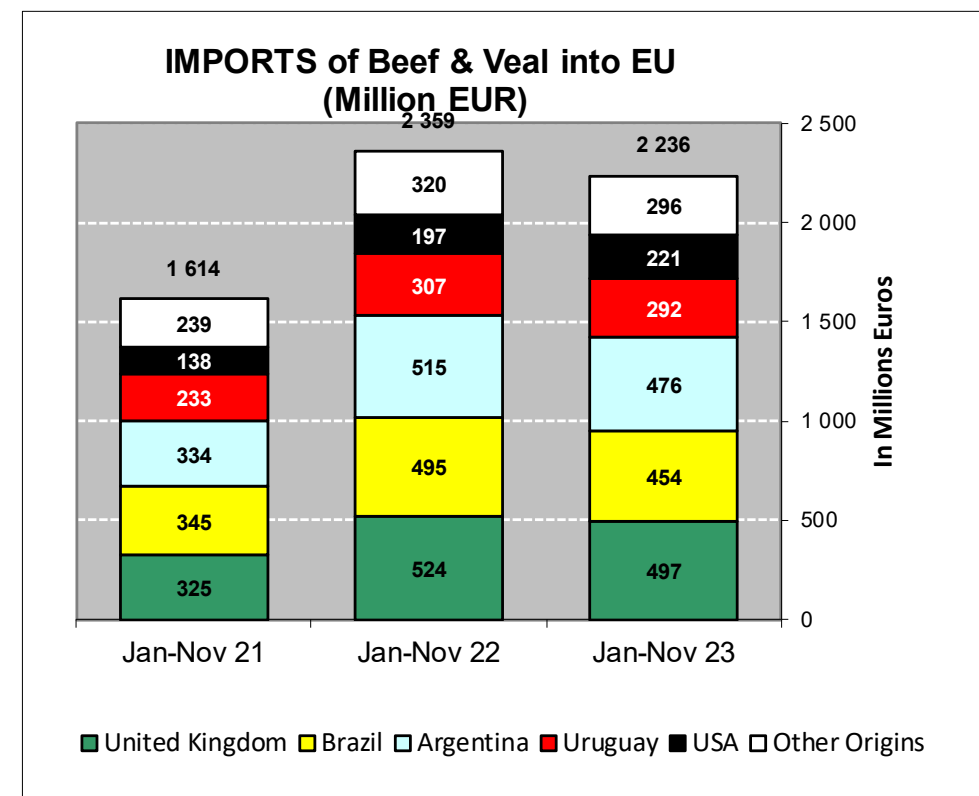
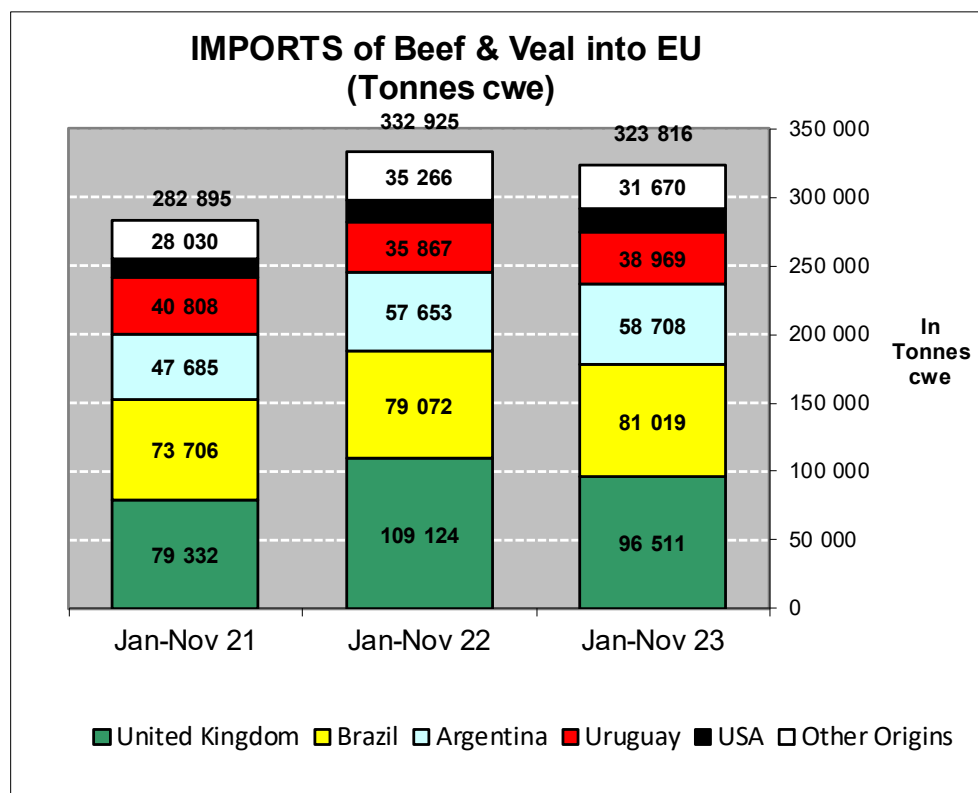
	2021		2022		Jan to Nov 2023		Compared to Jan to Nov 2022
	Tons	% Extra EU	Tons	% Extra EU	Tons	% Extra EU	
United Kingdom	87.599	28,3%	118.767	33,0%	96.511	29,8%	-11,6%
Brazil	81.737	26,4%	86.512	24,0%	81.019	25,0%	+2,5%
Argentina	52.300	16,9%	62.584	17,4%	58.708	18,1%	+1,8%
Uruguay	42.669	13,8%	37.619	10,5%	38.969	12,0%	+8,6%
USA	14.910	4,8%	17.269	4,8%	16.939	5,2%	+6,2%
Australia	8.925	2,9%	8.385	2,3%	7.561	2,3%	-8,1%
Namibia	1.996	0,6%	5.168	1,4%	6.721	2,1%	+41,9%
Paraguay	3.933	1,3%	5.404	1,5%	4.463	1,4%	-12,3%
New Zealand	4.380	1,4%	5.202	1,4%	4.233	1,3%	-14,1%
Switzerland	4.714	1,5%	4.730	1,3%	3.277	1,0%	-23,6%
Canada	1.816	0,6%	2.172	0,6%	1.393	0,4%	-32,5%
Other Destinations	4.290	1,4%	6.173	1,7%	4.022	1,2%	-32,2%
Extra-EU	309.270		359.985		323.816		-2,7%
% Change			+16,4%				

In Thousand Euros

	2021		2022		Jan to Nov 2023		Compared to Jan to Nov 2022
	1 000 EUR	% Extra EU	1 000 EUR	% Extra EU	1 000 EUR	% Extra EU	
United Kingdom	360.516	20,2%	572.017	22,5%	496.719	22,2%	-5,2%
Brazil	387.194	21,7%	542.417	21,3%	453.658	20,3%	-8,4%
Argentina	376.658	21,1%	550.724	21,7%	475.899	21,3%	-7,7%
Uruguay	246.910	13,8%	321.251	12,6%	291.818	13,1%	-5,0%
USA	156.708	8,8%	214.772	8,4%	221.481	9,9%	+12,2%
Australia	90.481	5,1%	101.737	4,0%	88.199	3,9%	-10,7%
Namibia	6.902	0,4%	24.570	1,0%	35.137	1,6%	+57,6%
Paraguay	20.419	1,1%	35.579	1,4%	26.118	1,2%	-22,8%
New Zealand	31.669	1,8%	50.277	2,0%	43.895	2,0%	-6,6%
Switzerland	53.477	3,0%	55.346	2,2%	37.572	1,7%	-24,6%
Canada	18.559	1,0%	21.880	0,9%	18.545	0,8%	-9,2%
Other Destinations	37.331	2,1%	52.847	2,1%	46.968	2,1%	-2,5%
Extra-EU	1.786.824		2.543.417		2.236.009		-5,2%
% Change			+42,3%				

TRADE

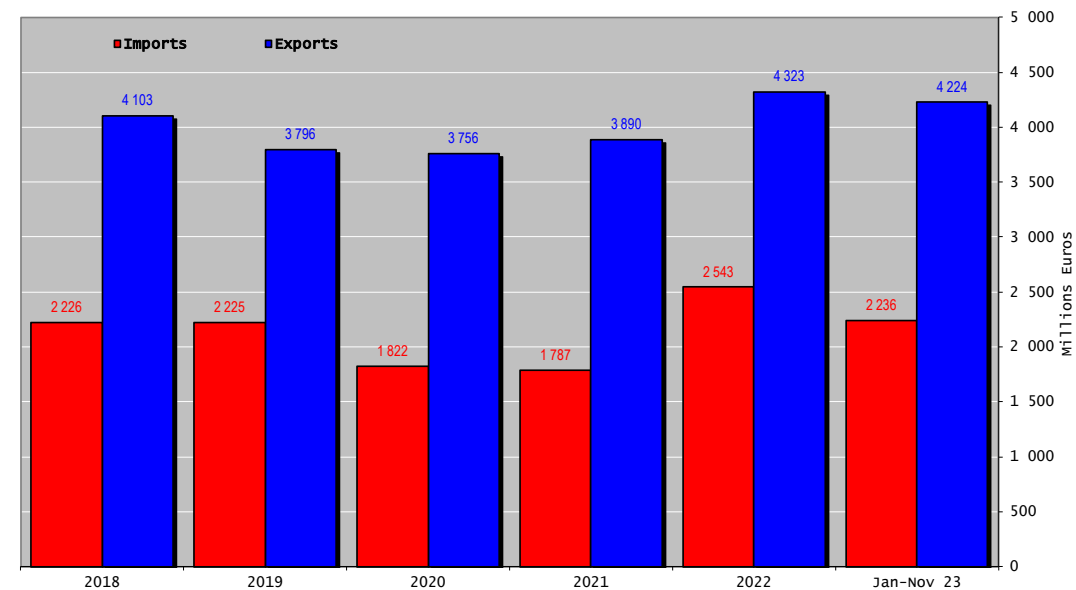
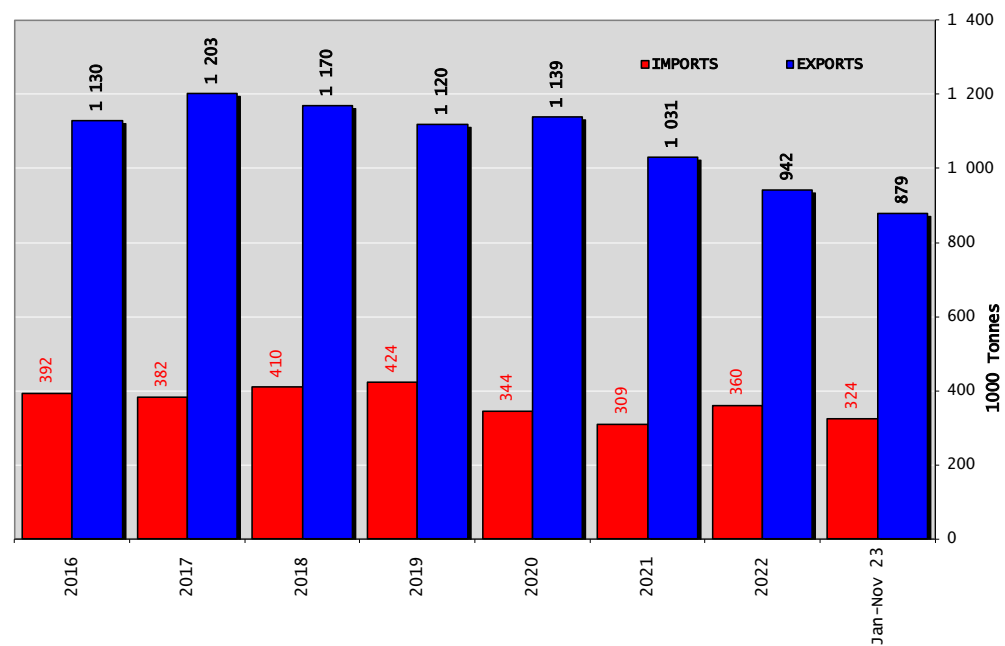
EU IMPORTS Beef & Live Animals



TRADE

EU TRADE BALANCE

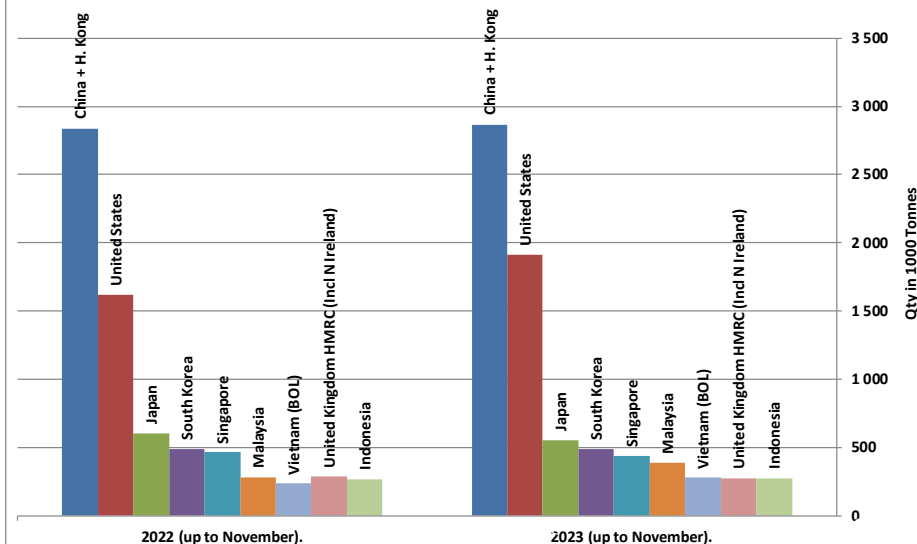
Beef & Live Animals Trade Balance of Beef Products and Live Animals



WORLD BEEF MARKET

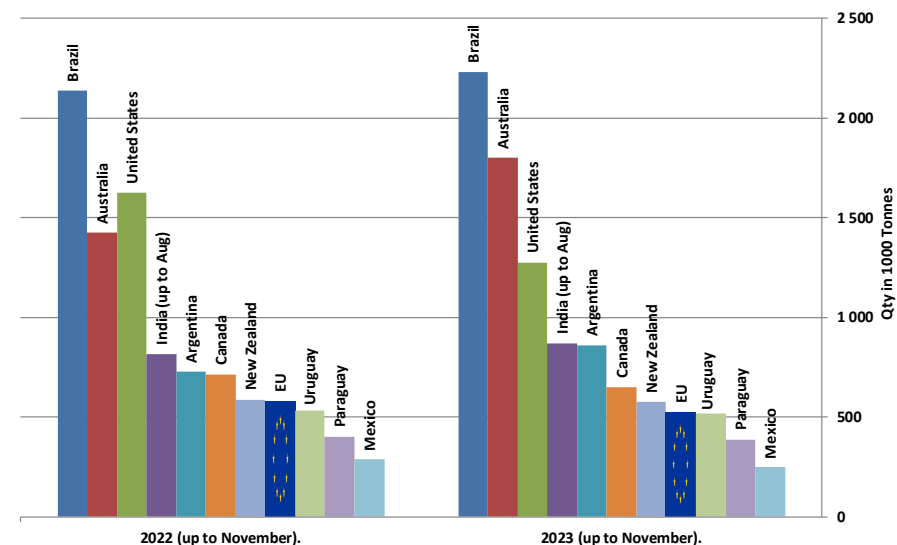
Main Importers of BEEF Products (up to November).

Source : GTA * Excluding live animals (0102), fats, preparations of several types of meat (0209, 0210 99 and 1602 90)

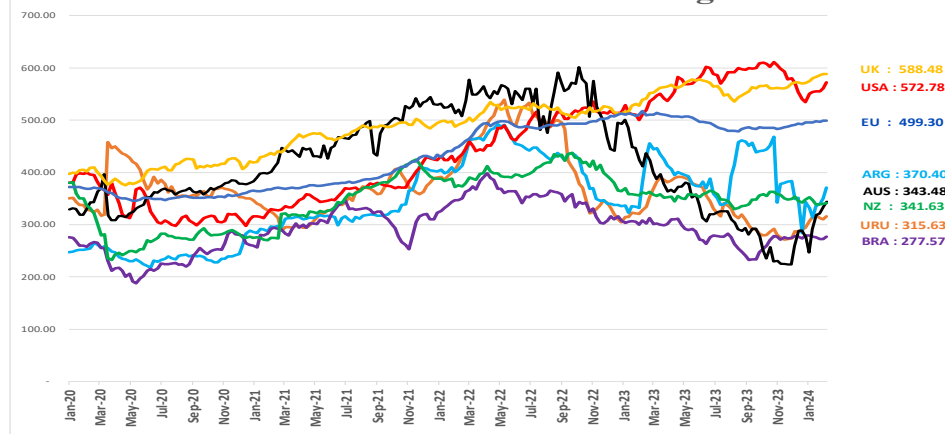


Main Exporters of BEEF Products (up to November).

Source : GTA * Excluding live animals (0102), fats, preparations of several types of meat (0209, 0210 99 and 1602 90)



World Beef Prices in Euros/100 kg carcase



THANK YOU VERY MUCH

More Information at:

EU Market Observatory

https://ec.europa.eu/agriculture/market-observatory/meat_en

And

Agri-FOOD data portal:

<http://agridata.ec.europa.eu/>

Thank you



© European Union 2020

Unless otherwise noted the reuse of this presentation is authorised under the [CC BY 4.0](https://creativecommons.org/licenses/by/4.0/) license. For any use or reproduction of elements that are not owned by the EU, permission may need to be sought directly from the respective right holders.

Slide xx: **element concerned**, source: **e.g. Fotolia.com**; Slide xx: **element concerned**, source: **e.g. iStock.com**

