



# Sweetener Markets

## Long-term analysis at MS-level

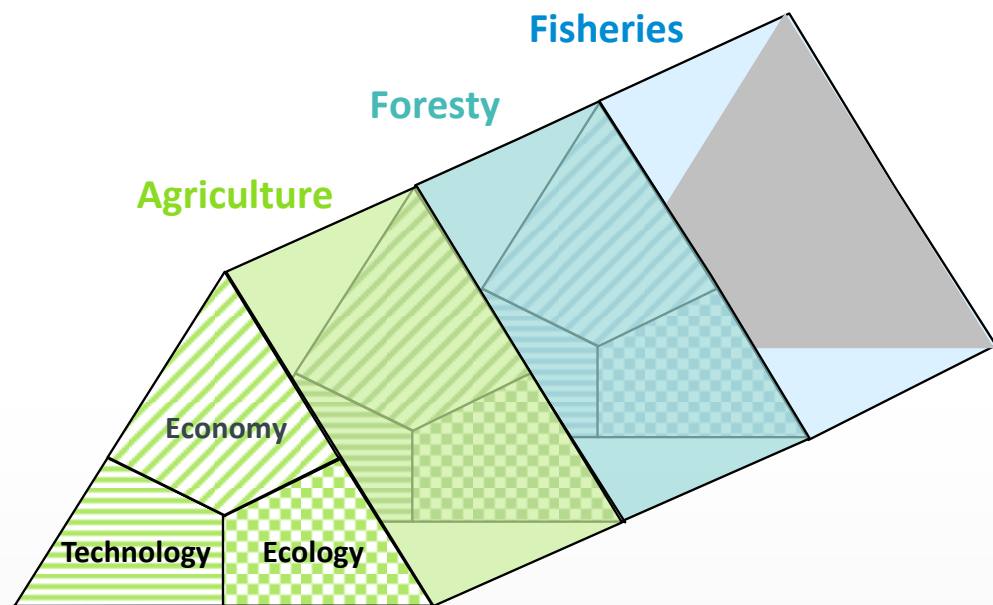
**Marlen Haß** (Thuenen Institute)

Brussels, 19 March 2019



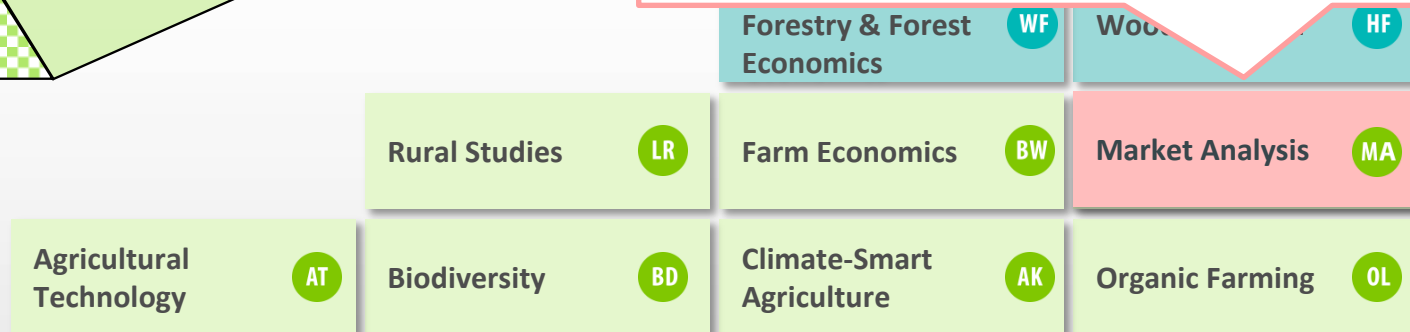
# Thuenen Institute: Federal Research Institute for Rural Areas, Fishery and Forestry

## Fields, Forests, Seas – shaping life basics

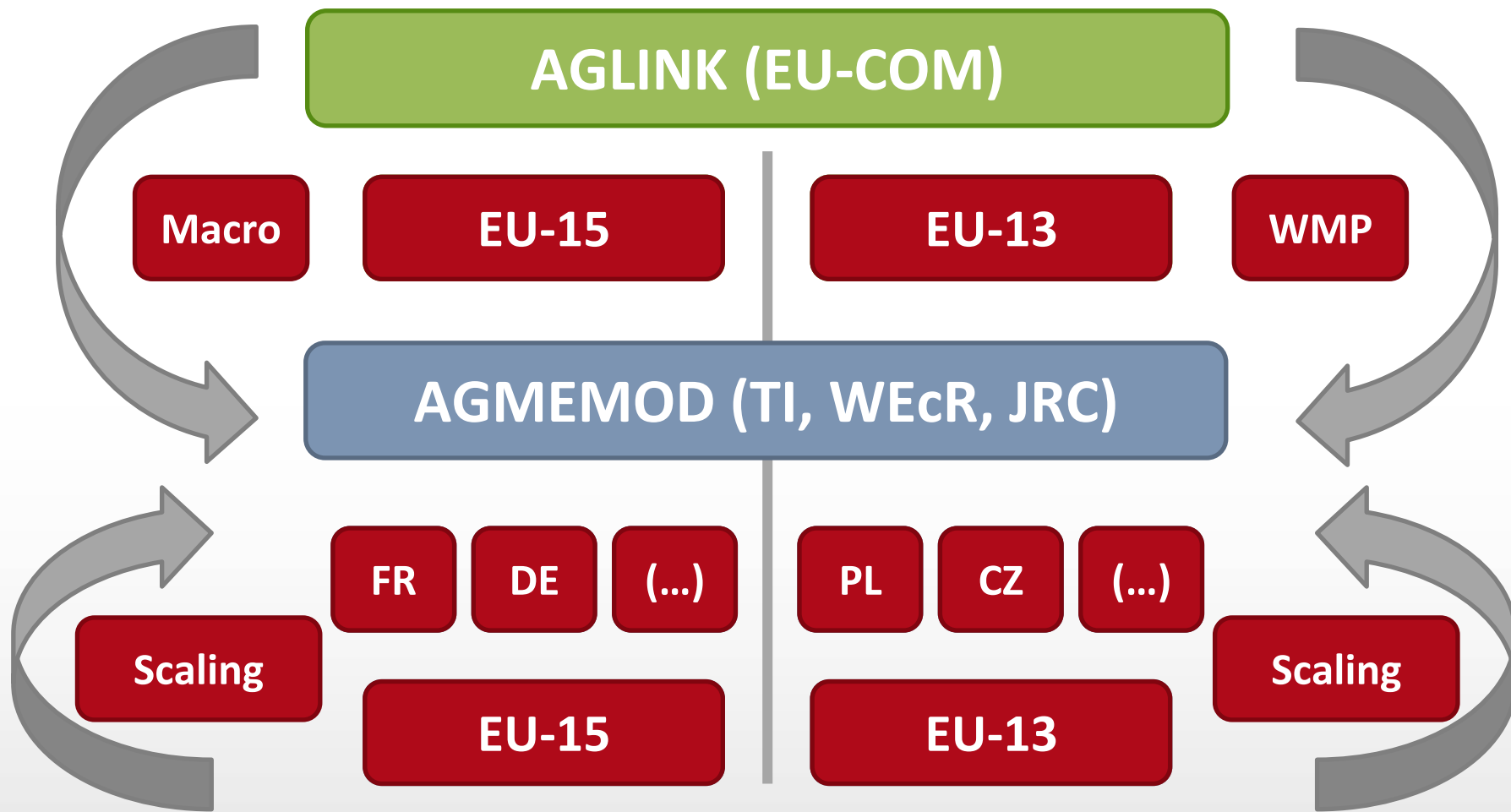


### Fields of Activity:

- Model-based Policy Impact Assessment
- Analysis of Agricultural and Food Sectors
- International Agricultural Trade & Food Security
- Consumer Research

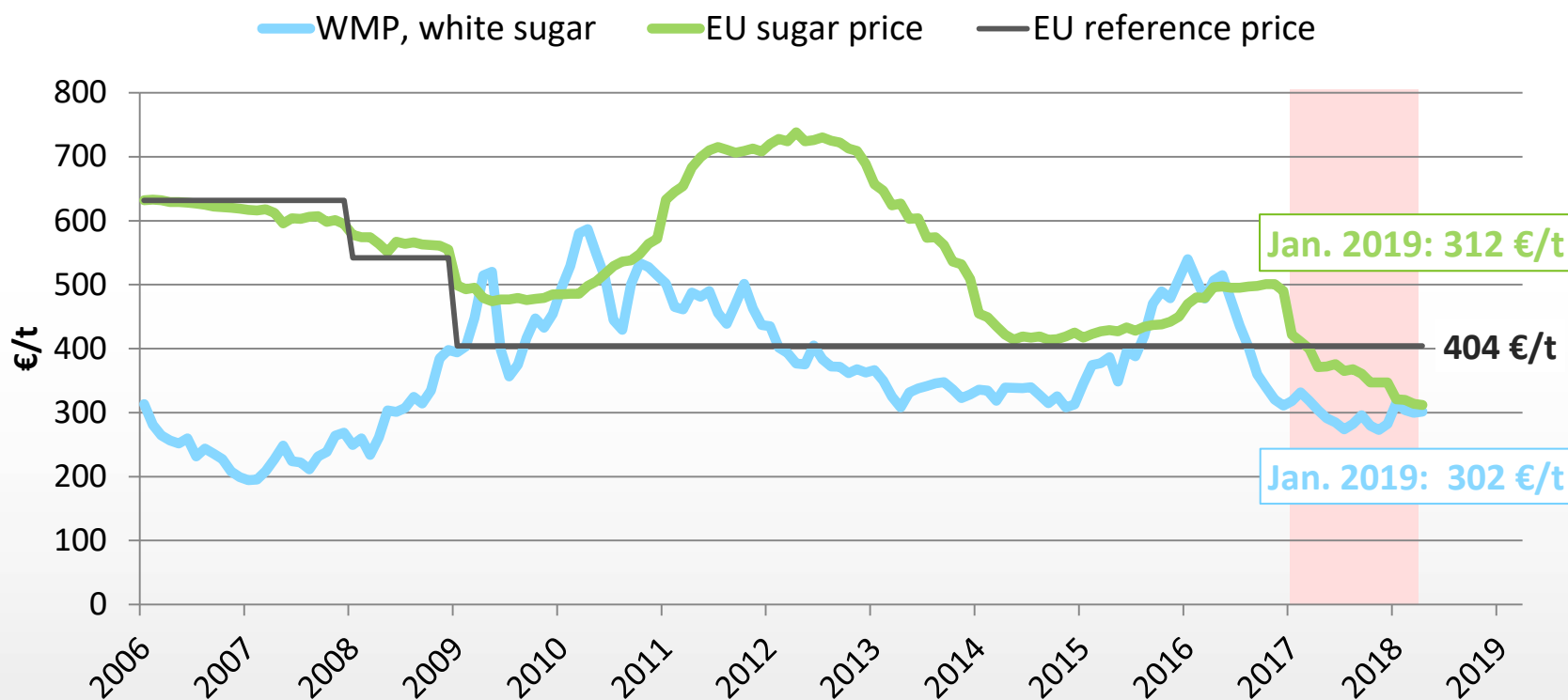


# EU-Outlook Project



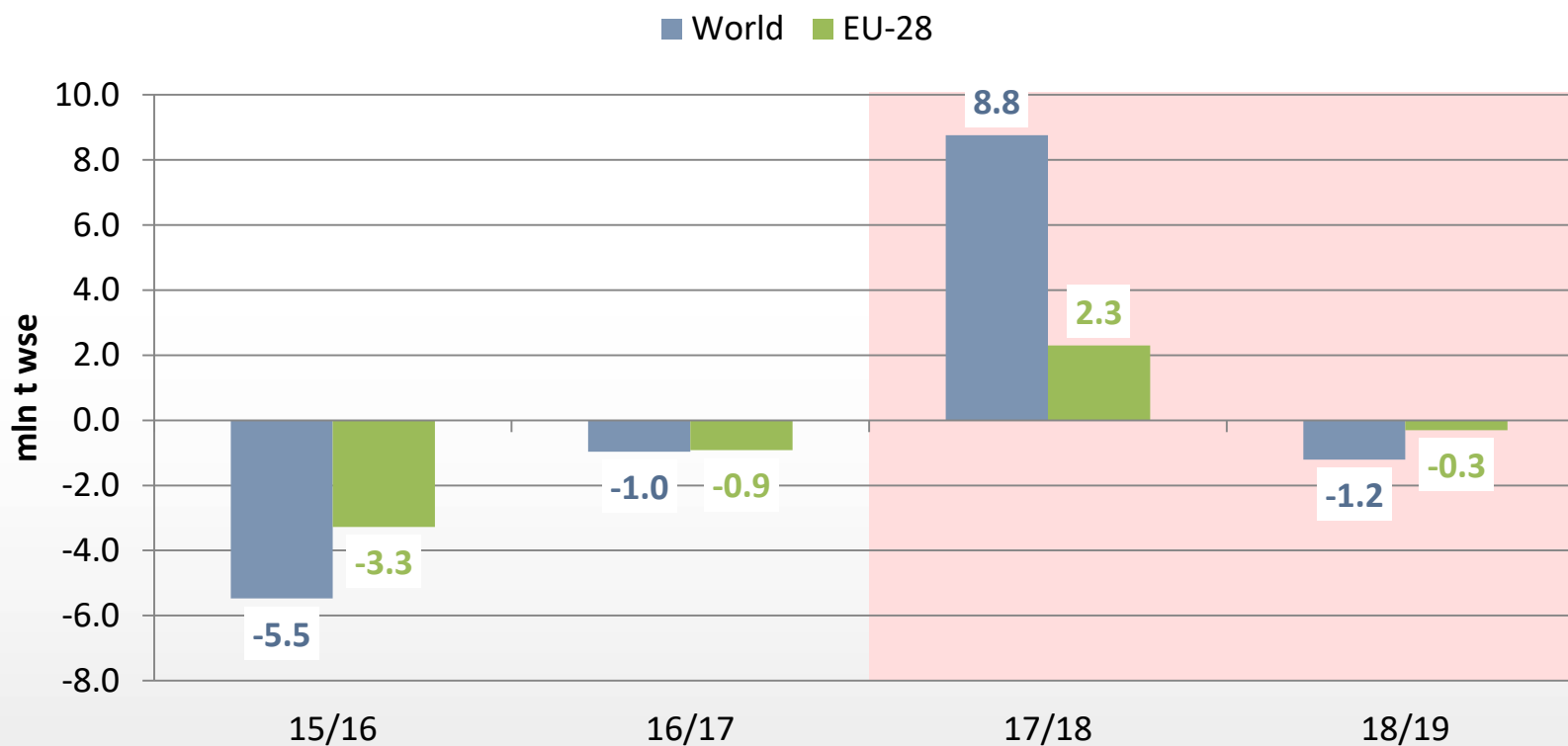
# Current market situation:

## Price development



# Current market situation:

## Surplus / Deficit

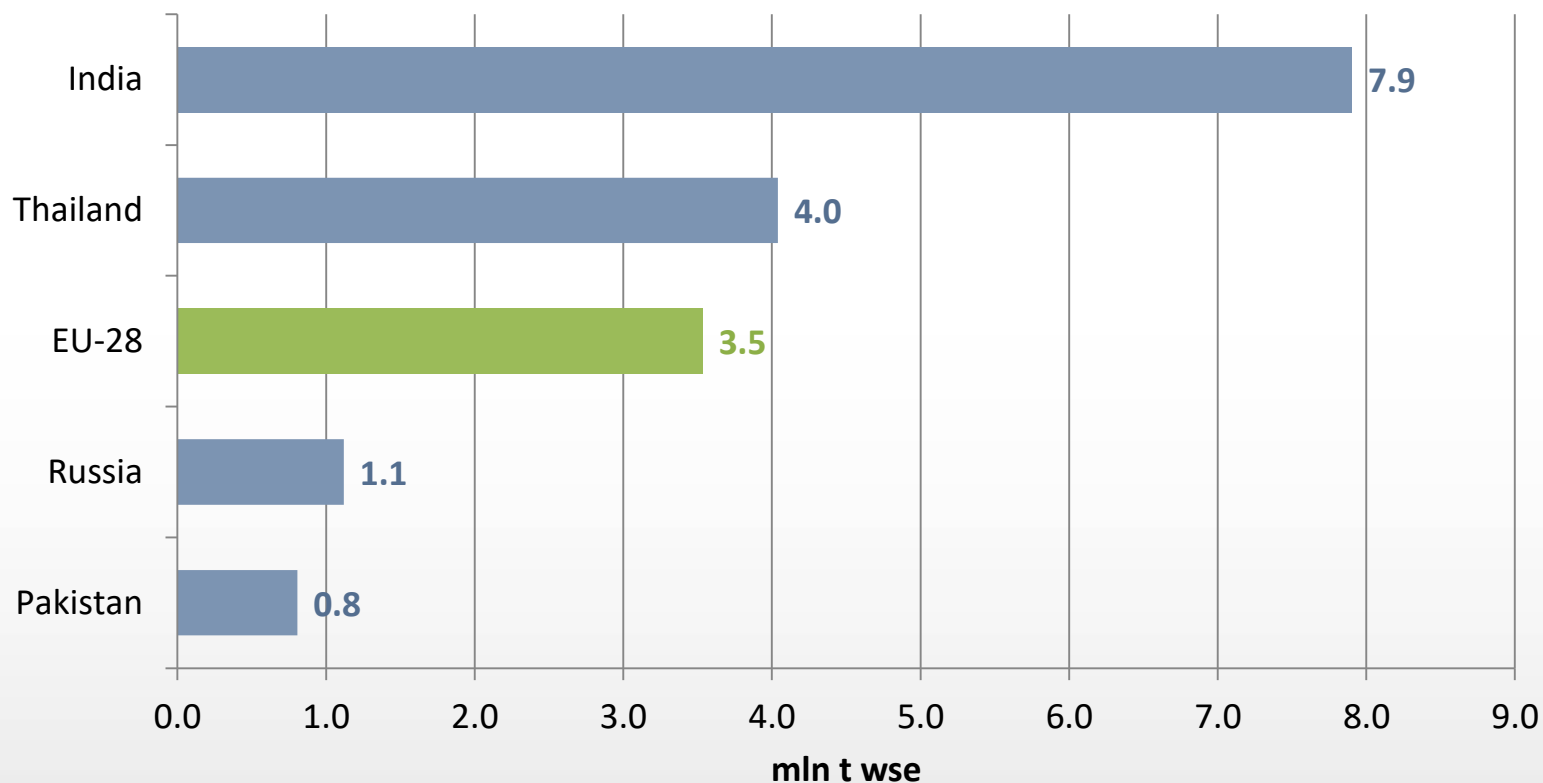


Year 15/16 refers to 10/2015-09/2016.

Source: F.O. Licht (2018): 4. World Sugar Balance 2009/10 - 2018/19. F.O.Licht's International Sugar and Sweetener Report 150 (36), Supplement.

# Current market situation:

## Change in Production, 17/18 vs 3y avg

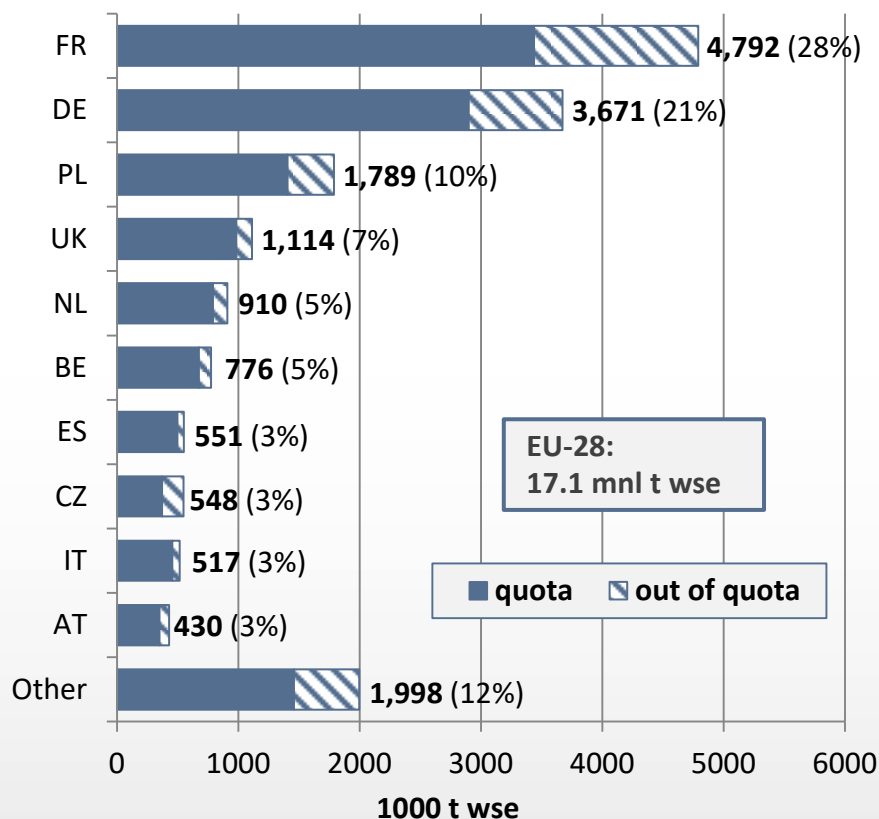


Year 17/18 refers to 10/2017-09/2018.

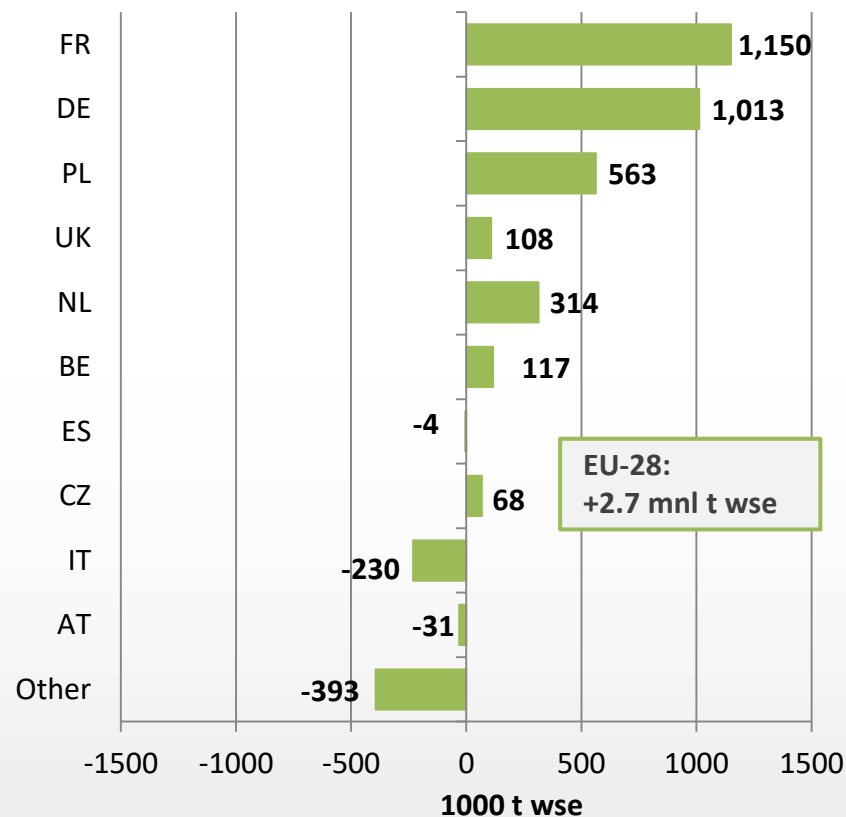
Source: F.O. Licht (2018): 4. World Sugar Balance 2009/10 - 2018/19. F.O.Licht's International Sugar and Sweetener Report 150 (36), Supplement.

# Sugar: Change in Production

Ø 2014-16<sup>1)</sup>



Ø 2017-18 vs. Ø 2014-16

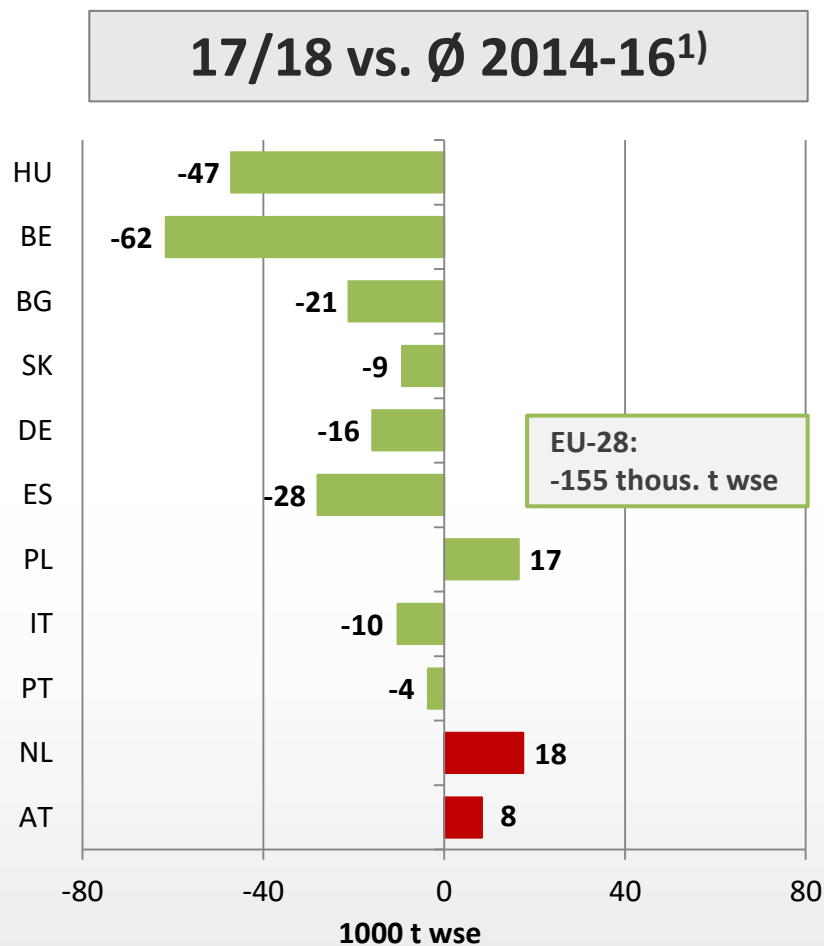
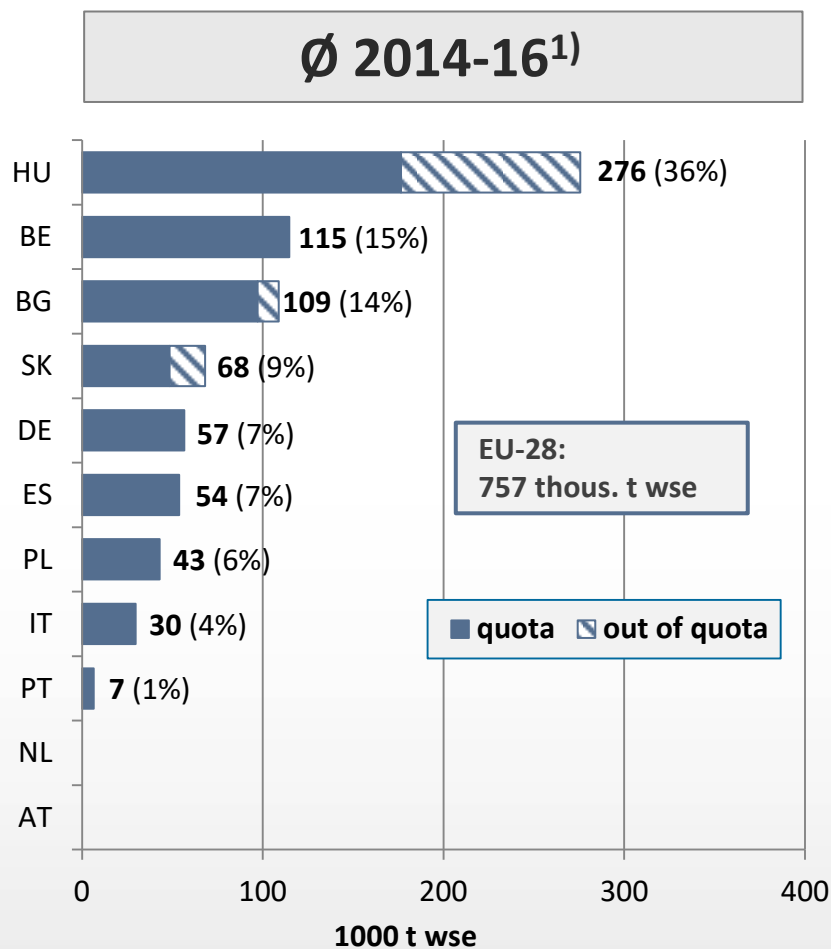


1) Year 2014 refers to 10/2014-09/2015.

( ) Share in EU production; wse: white sugar equivalent; including ethanol.

Source: EU-COM (2018): Balance Sheet (Updated: 20 December 2018) . Online: [https://ec.europa.eu/agriculture/market-observatory/sugar/balance-sheets\\_en](https://ec.europa.eu/agriculture/market-observatory/sugar/balance-sheets_en)

# Isoglucose: Change in Production



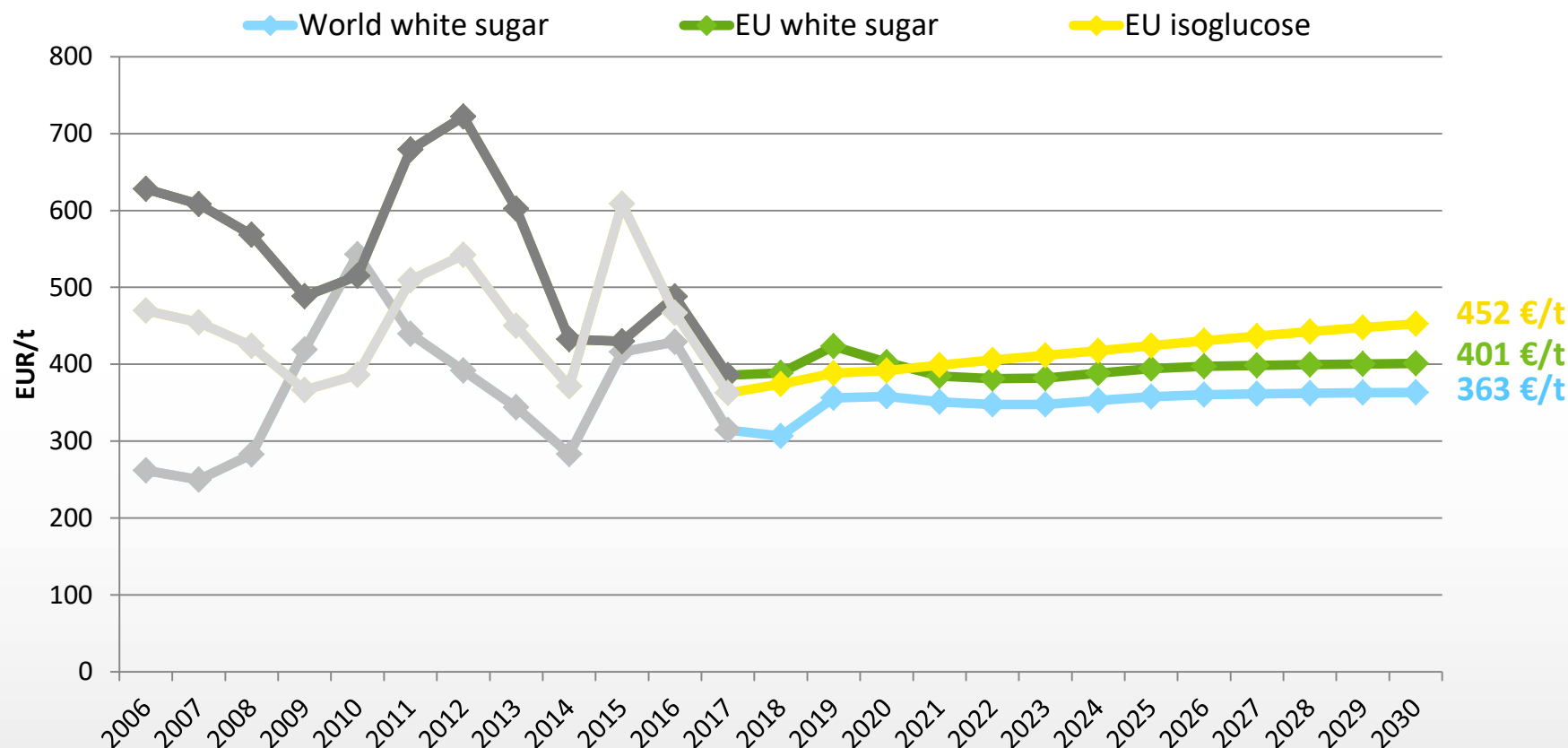
1) Year 2014 refers to 10/2014-09/2015.

() Share in EU production; wse: white sugar equivalent.

Source: EU-COM (2018): Balance Sheet (Updated: 25 January 2018). Online: [https://ec.europa.eu/agriculture/market-observatory/sugar/balance-sheets\\_en](https://ec.europa.eu/agriculture/market-observatory/sugar/balance-sheets_en)



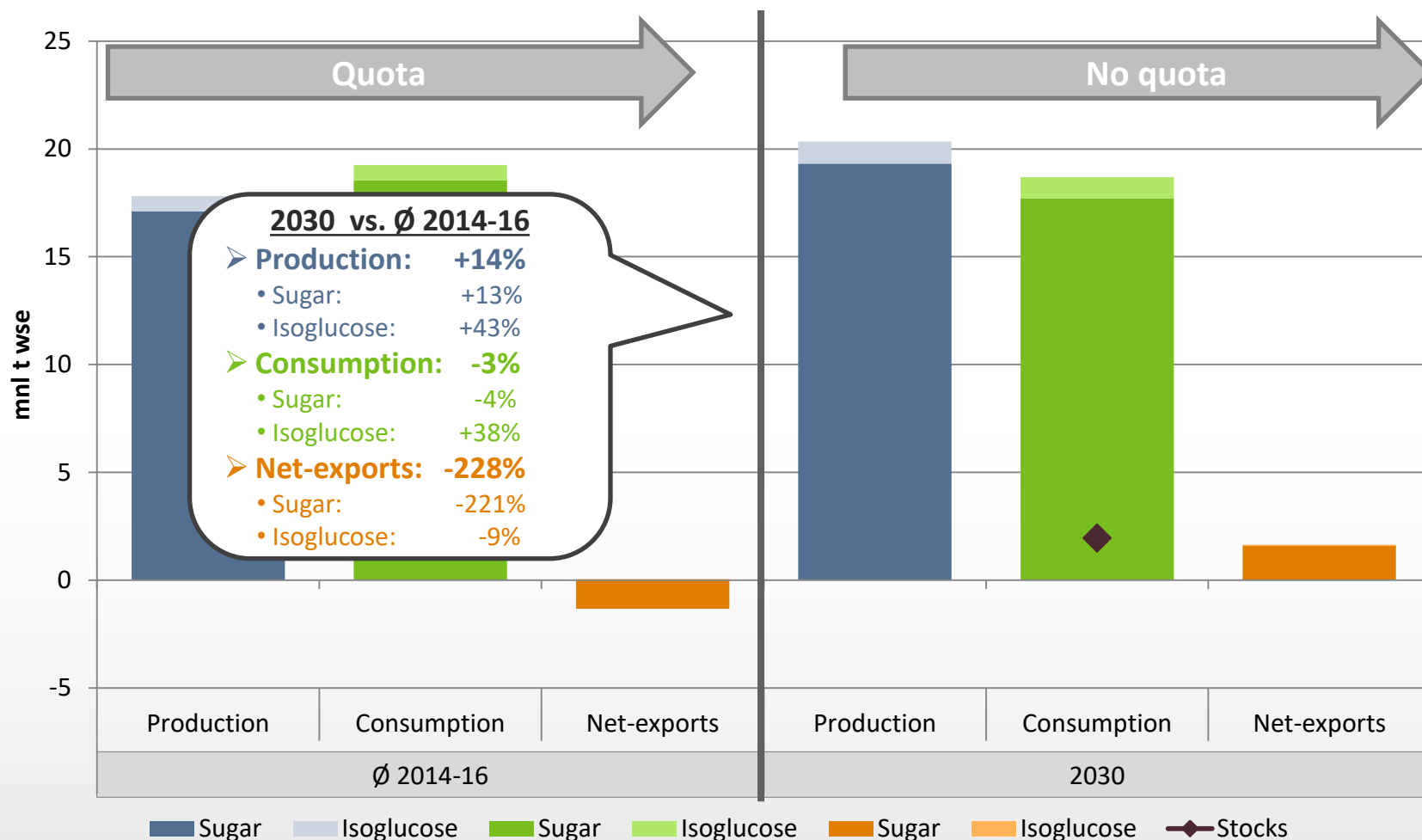
# EU-Outlook: Price development



Year 2006 refers to 10/2006-09/2007.

Source: EU-COM (2018): EU Agricultural outlook for the agricultural markets and income 2018-2030. Online: [https://ec.europa.eu/agriculture/markets-and-prices/medium-term-outlook\\_en](https://ec.europa.eu/agriculture/markets-and-prices/medium-term-outlook_en)

# EU-Outlook: EU Sweetener Balance

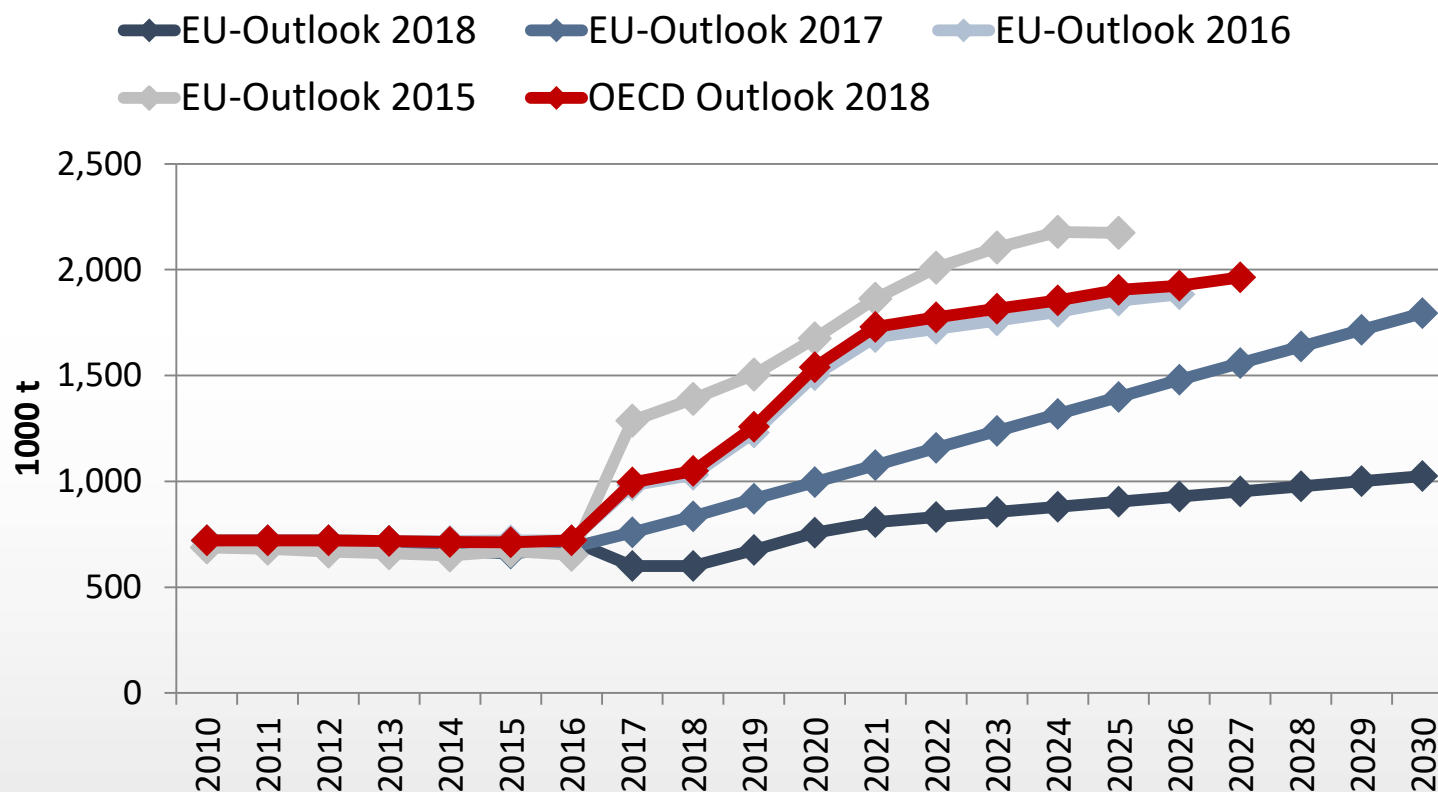


Year 2017 refers to 10/2017-09/2018

Source: EU-COM (2017): EU Agricultural outlook for the agricultural markets and income 2017-2030. Online: [https://ec.europa.eu/agriculture/markets-and-prices/medium-term-outlook\\_en](https://ec.europa.eu/agriculture/markets-and-prices/medium-term-outlook_en)

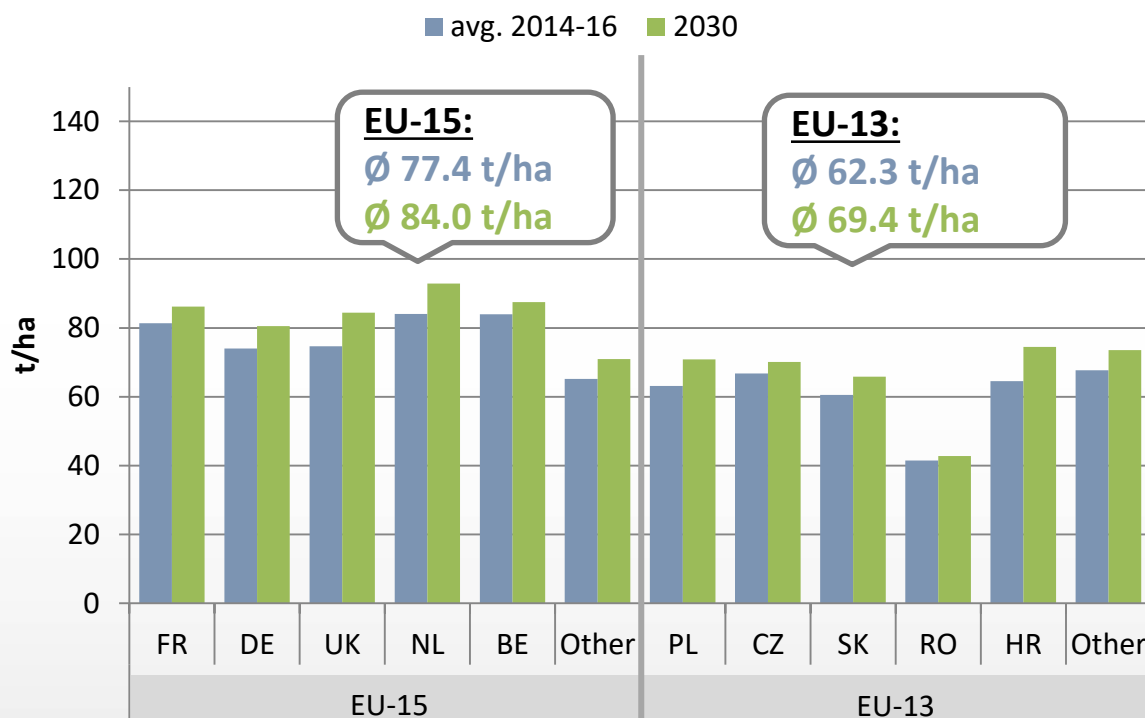
# EU-Outlook: Comparison of Projections

## EU Isoglucose Production



# Sugar Beet Yields at MS-level

## Yields, avg. 2014-16 and 2030



Preliminary AGMEMOD simulation results based on version AGMEMOD-V8.2-01Mar19\_OL2019CV.

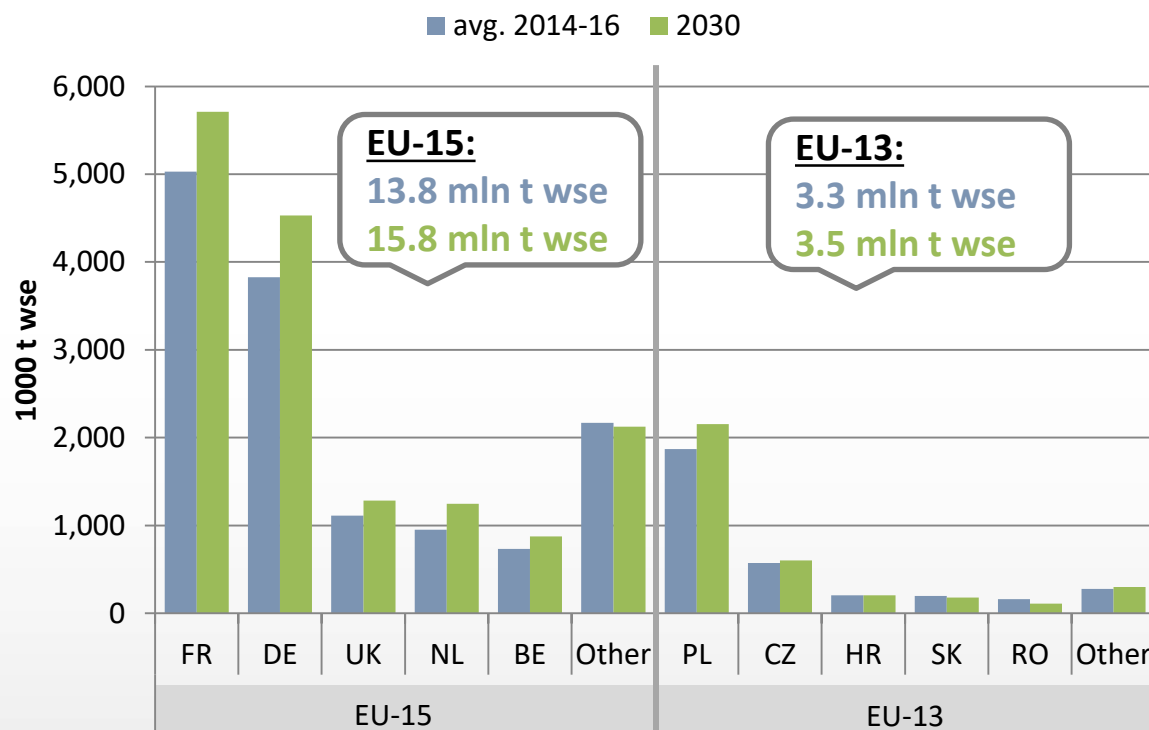
## Key findings:

- Higher yields in the EU-15 compared to the EU-13
- Overall increase in yields
- Stronger growth in the EU-13 (0.7% p.a.) compared to the EU-15 (0.5% p.a.)
- EU-13 average remains below EU-15 average

➔ Application ban on neonics not taken into account!

# Sugar Production at MS-level

## Production, avg. 2014-16 and 2030



Preliminary AGMEMOD simulation results based on version AGMEMOD-V8.2-01Mar19\_OL2019CV.

## Key findings:

- Sugar production is concentrated in the EU-15  
→ Market share: ca. 80%
- **EU-15:**  
→ All large producers increase production
- **EU-13:**  
→ Main increase in PL, some growth also in other MS (CZ, LT)

# Sugar Production at MS-level

## Change in Production, 2030 vs avg. 2014-16



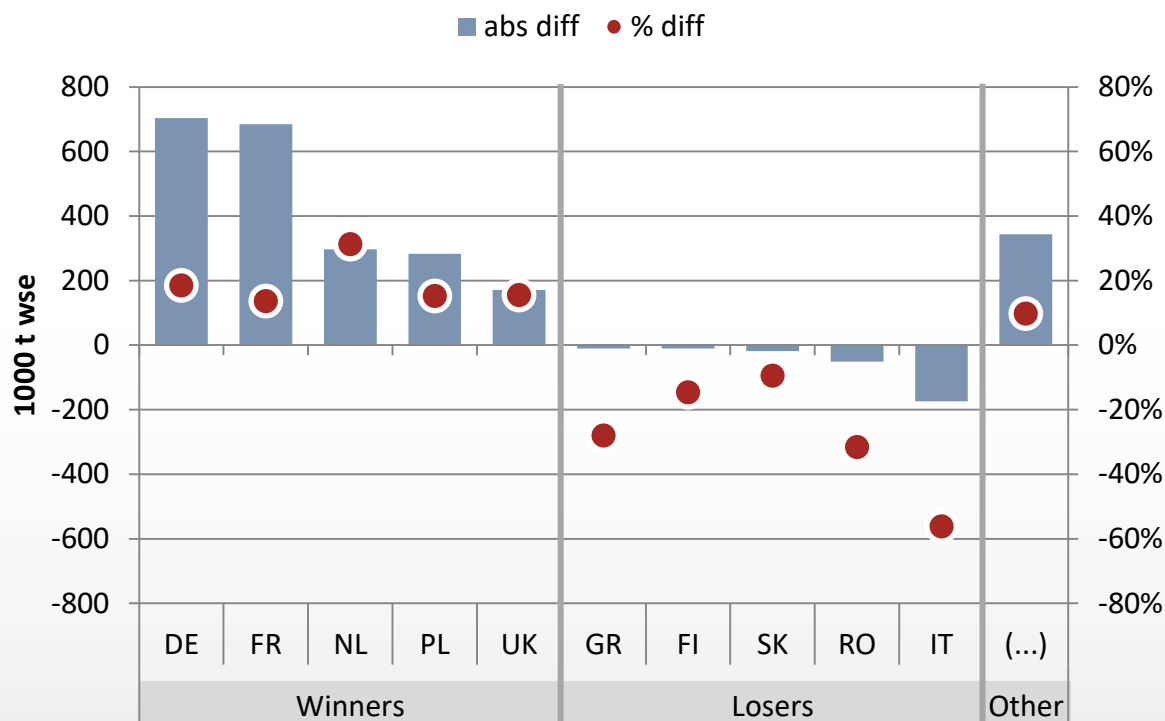
Preliminary AGMEMOD simulation results based on version AGMEMOD-V8.2-01Mar19\_OL2019CV.

## Key findings:

- **EU-15: +2.0 mln t (+14.1%)**
  - DE and FR contribute most to the overall increase
  - Decline in some smaller sugar producing MS
- **EU-13: +0.3 mln (+8.1%)**
  - Largest increase in PL
  - Substantial decline in SK and RO

# Sugar Production at MS-level

## Change in Production, 2030 vs avg. 2014-16



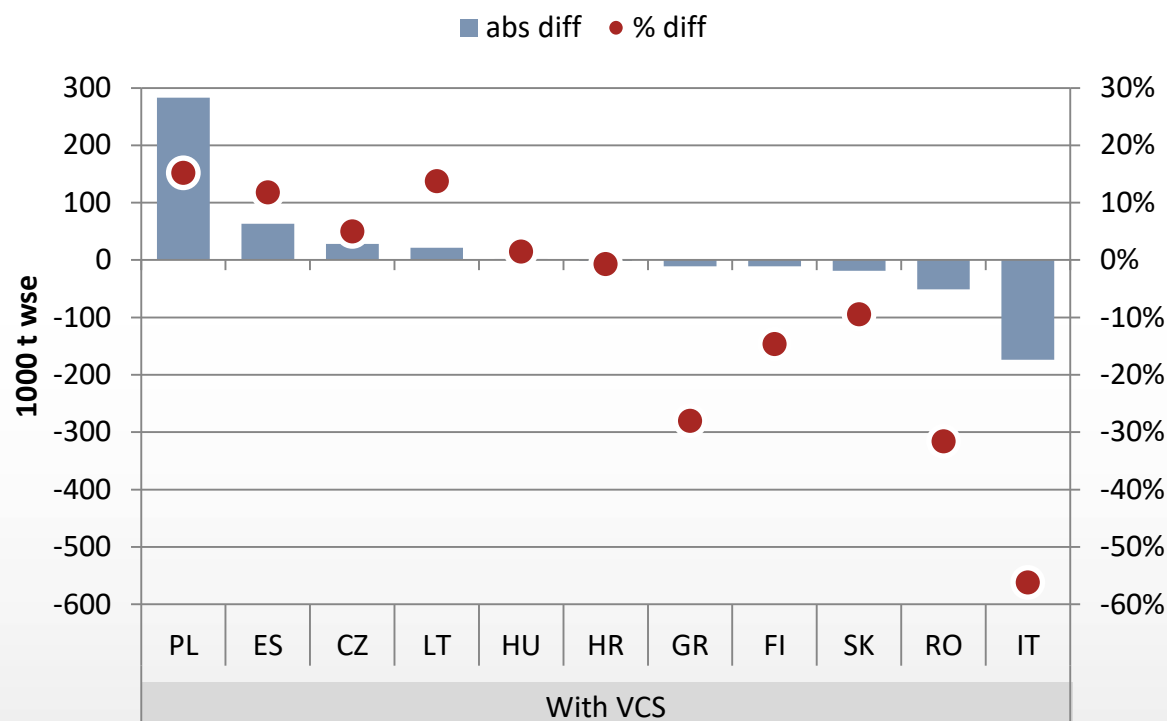
Preliminary AGMEMOD simulation results based on version AGMEMOD-V8.2-01Mar19\_OL2019CV.

### Key findings:

- **Winners: +2.7 Mio t (+16.1%)**  
→ Mainly large sugar producers increase production
- **Losers: -0.3 Mio (-34.0%)**  
→ Decline in production of up to 56%, despite VCS

# Sugar Production at MS-level

## Change in Production, 2030 vs avg. 2014-16



Preliminary AGMEMOD simulation results based on version AGMEMOD-V8.2-01Mar19\_OL2019CV.

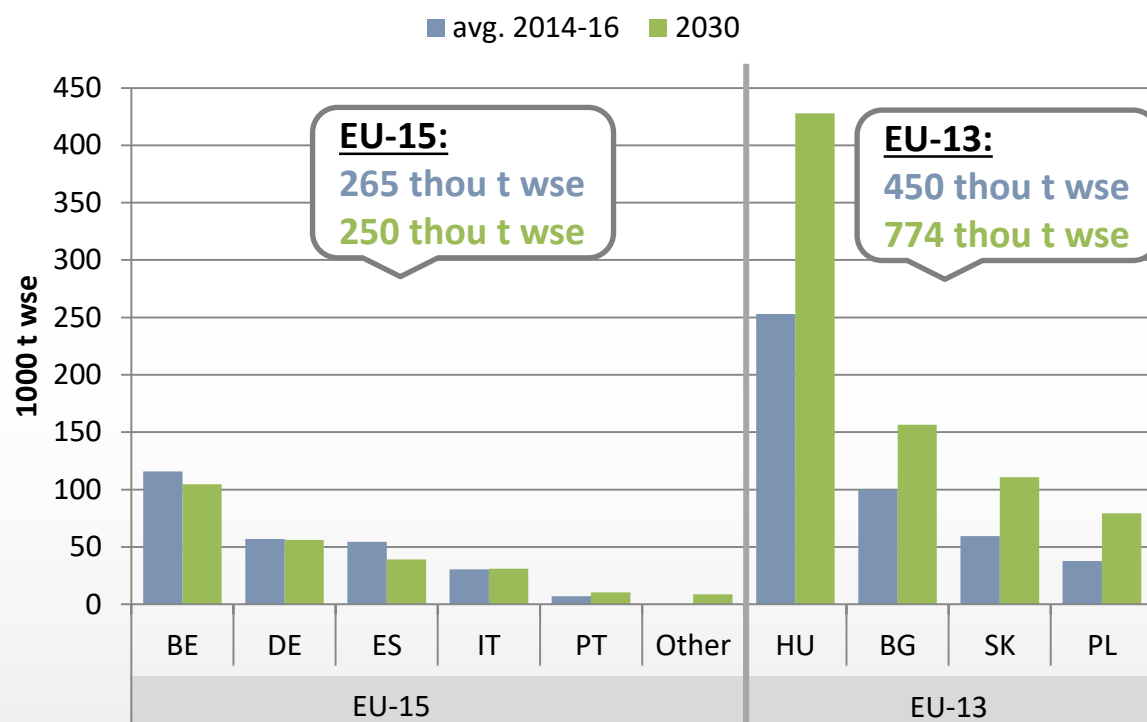
## Key findings:

- **VCS MS: +132 thou t (+3.1%)**
  - Mainly small sugar producers pay VCS
  - On average rather stable production in VCS MS, but large differences among countries
  - Some MS increase production and might be competitive without VCS
  - Other MS don't seem to be competitive, despite VCS



# Isoglucose Production at MS-level

## Production, avg. 2014-16 and 2030



Preliminary AGMEMOD simulation results based on version AGMEMOD-V8.2-01Mar19\_OL2019CV.

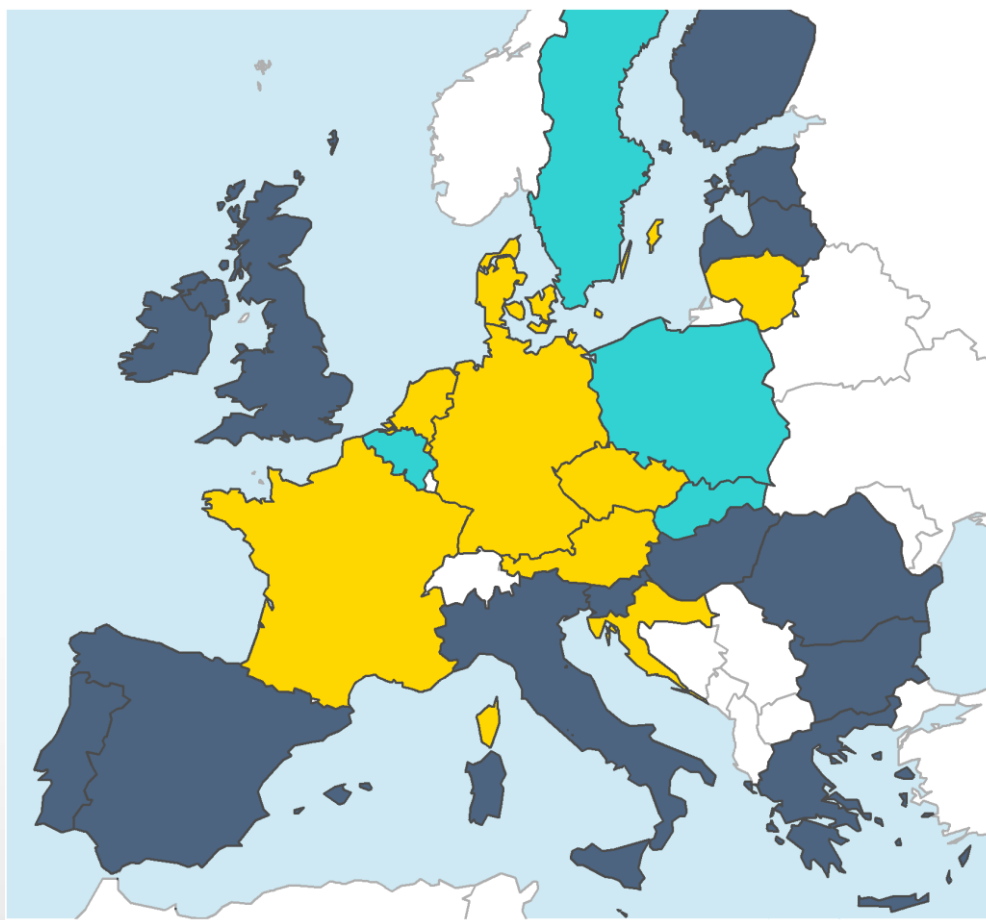
## Key findings:

- Isoglucose production is concentrated in the EU-13
  - Market share: 63% (Ø2014-16)
  - Market share: 76% (2030)
- **EU-15:**
  - Overall decline in production
  - Market entry of AT in 2017, but no further growth
- **EU-13:**
  - All producers substantially increase production

# Sugar – Net Trade Ø 2014-16

## Key findings:

- **Net-Exporters:**  
Centre Europe
- **Net-Importers:**  
South Europe
- **Balanced:**  
North-East Europe



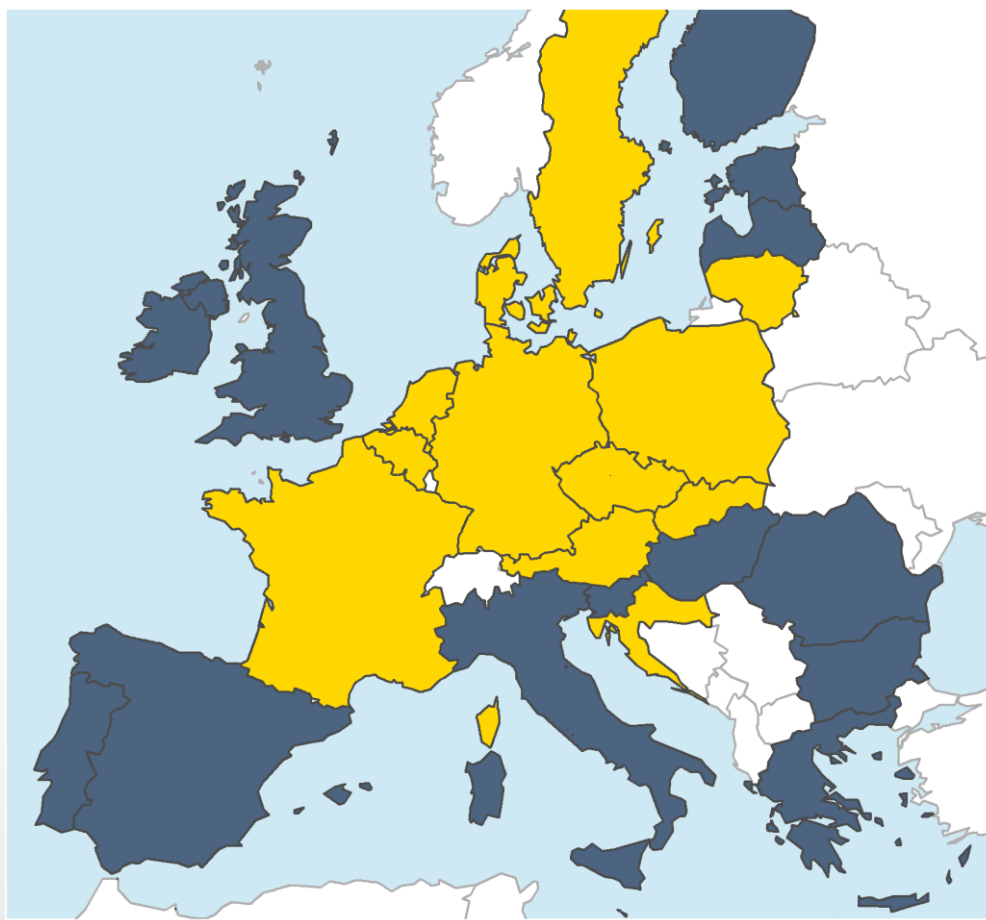
Preliminary AGMEMOD simulation results based on version AGMEMOD-V8.2-01Mar19\_OL2019CV.

1) Net-Trade Volume  
< 10 % of Production

# Sugar – Net Trade 2030

## Key findings:

- **Switch:**  
**Balanced** →  
**Net-Exporter:**  
PL, SE, SK, BE



Preliminary AGMEMOD simulation results based on version AGMEMOD-V8.2-01Mar19\_OL2019CV.

Net-Exporters



Net-Importers



Balanced<sup>1)</sup>



Not available



1) Net-Trade Volume  
< 10 % of Production

# Sweetener: Projection highlights

## ■ Production:

- Overall growth in production over the projection period

- **Sugar:** growth mainly in the EU-15-MS
- **Isoglucose:** growth mainly in the EU-13-MS

- Some countries substantially reduce production

- **Sugar:** IT, GR, FI, RO, SK ➤ **Isoglucose:** ES, BE

## ■ Consumption:

- Overall decline in sweetener consumption, but growth of isoglucose consumption
- Substitution of sugar by isoglucose mainly in the EU-13-MS

## ■ Trade:

- EU-28 becomes and remains net-exporter of sweetener
- **Sugar:** PL, SE, SK, BE switch from balanced market to net-export position
- **Isoglucose:** BE and ES change their net trade position

# Thanks for your attention!

**Contact:**

Marlen Haß

Thuenen-Institute of Market Analysis

Bundesallee 63

38116 Braunschweig (Germany)

email: [marlen.hass@thuenen.de](mailto:marlen.hass@thuenen.de)

phone: 0531-596-5322

