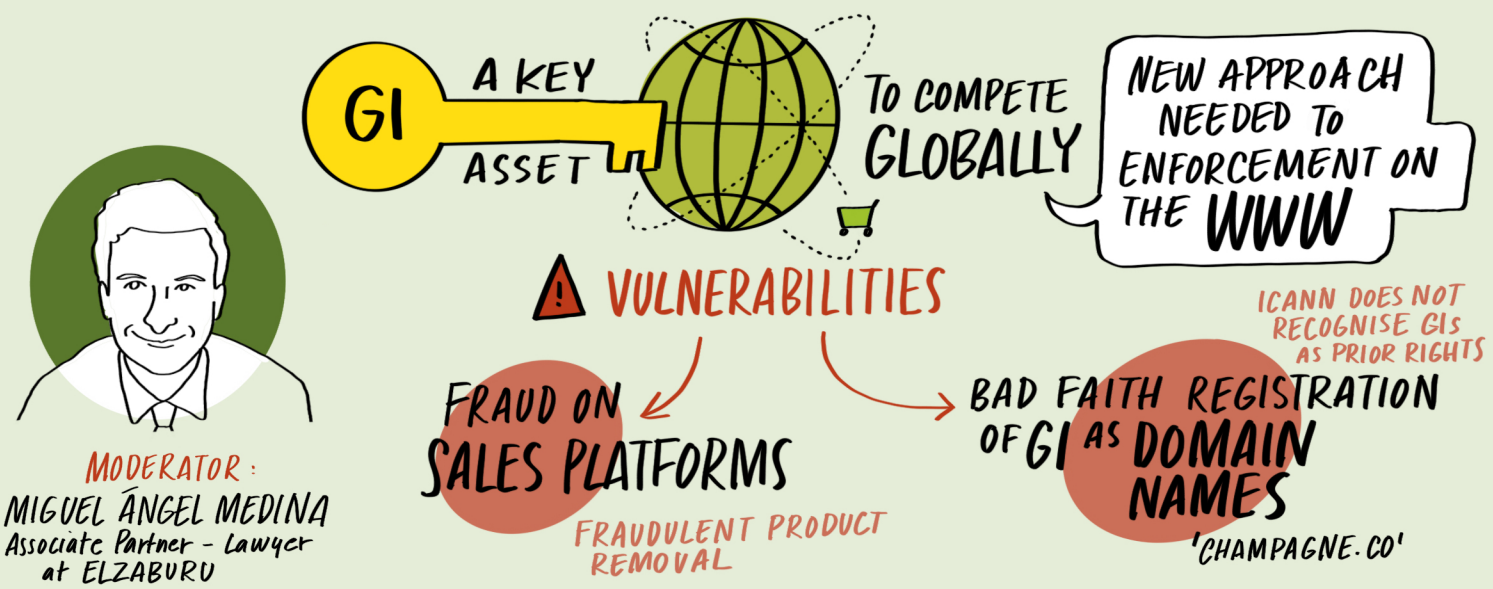
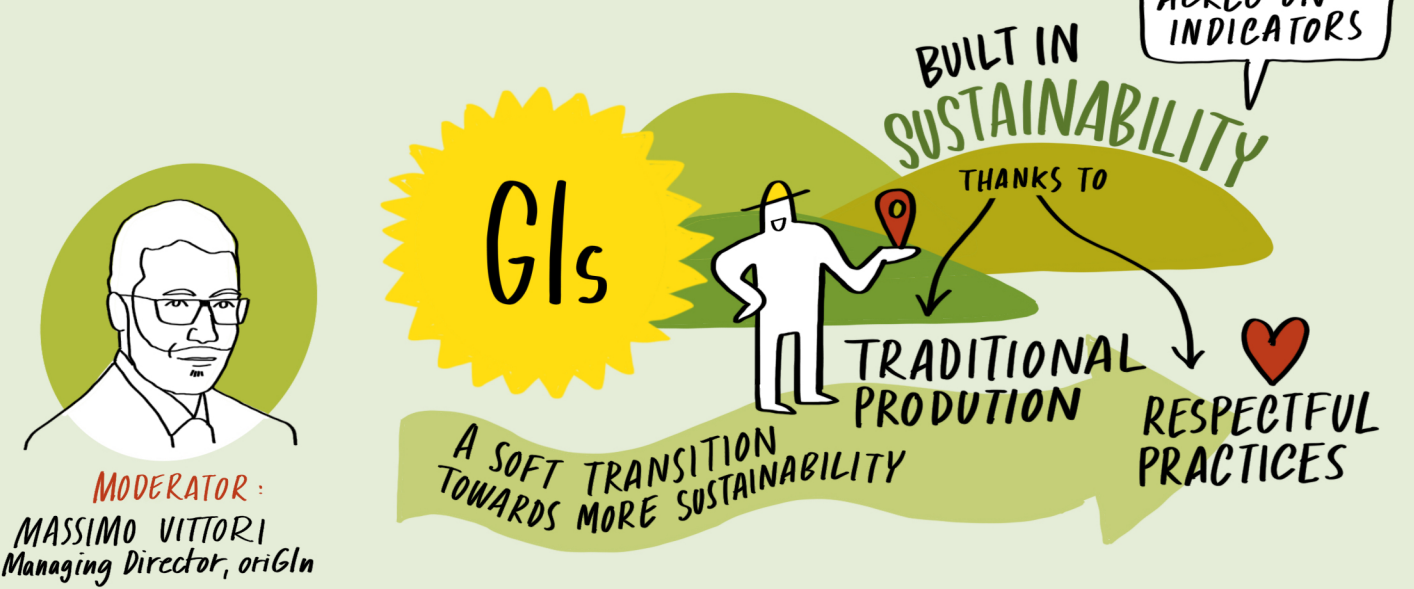


## PANEL 2.1 - CONTROLS & ENFORCEMENT: DNS & INTERNET



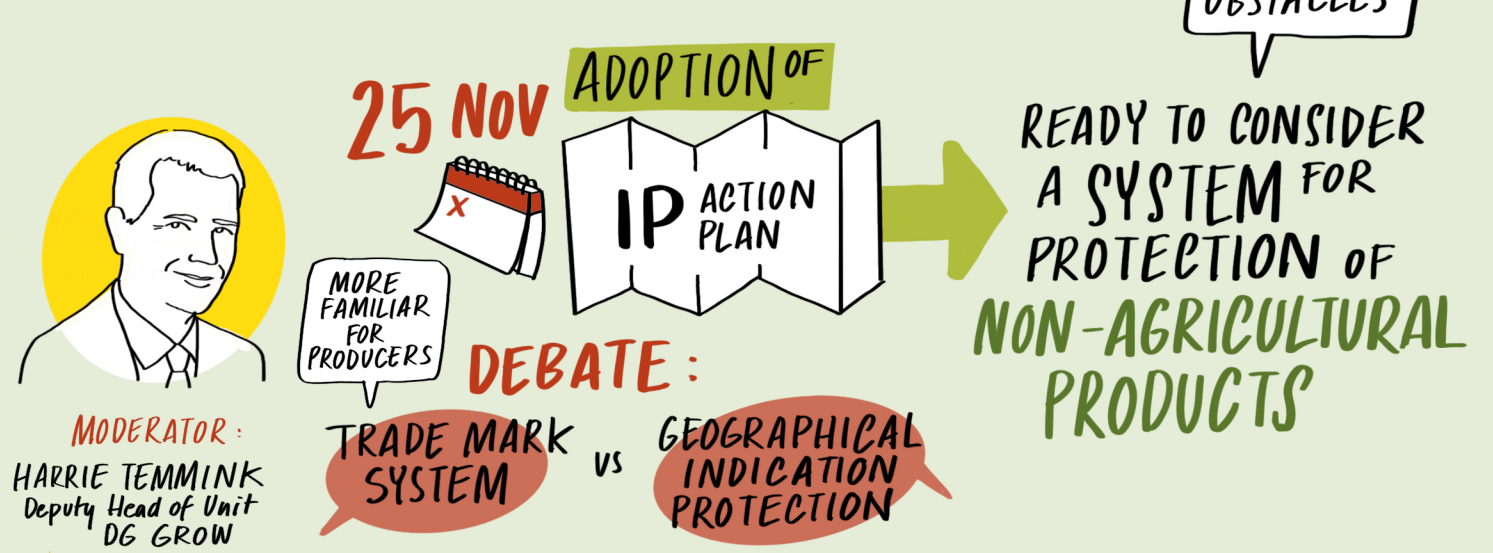
**MODERATOR:**  
MIGUEL ÁNGEL MEDINA  
Associate Partner - Lawyer  
at ELZABURU

## PANEL 2.2 - SUSTAINABILITY: ISSUES



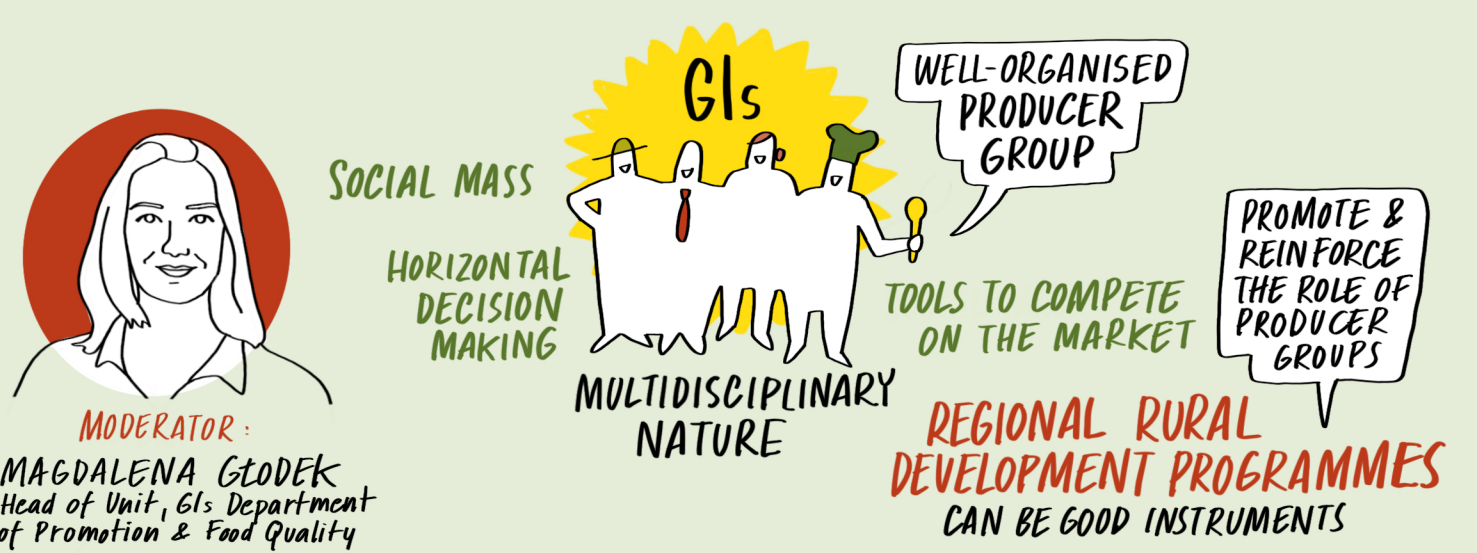
**MODERATOR:**  
MASSIMO VITTORI  
Managing Director, oriGIn

## PANEL 2.3 - NON-AGRICULTURAL GIS: ISSUES



**MODERATOR:**  
HARRIE TEMMINK  
Deputy Head of Unit  
DG GROW

## PANEL 2.4 - INCREASING ATTRACTIVENESS OF GIS: ISSUES



**MODERATOR:**  
MAGDALENA GLODEK  
Head of Unit, GIS Department  
of Promotion & Food Quality