



European  
Commission

June 2021

## Statistical Factsheet

# Latvia



### CONTENTS

Main figures	1
1. KEY DATA	2
2. POPULATION & ECONOMY	3-4
3. FINANCIAL ASPECTS	5-6
4. ECONOMIC ACCOUNTS	7-13
5. AGRICULTURAL TRADE	14-15
6. FARM STRUCTURE	16-18

Main figures - Year 2020		
Population (1 <sup>st</sup> January)	1 907 675	persons
Area*	64 586	km <sup>2</sup>
Currency	EUR	euro
Nominal GDP at current prices	29 334	million EUR
GDP per capita at current prices	15 205	EUR
GDP per capita at purchasing power	21 200	PPS
Harmonised index of consumer prices	0.3%	change over previous year
Unemployment rate	8.3	% of labour force
Exports (goods & services)	16 770	million EUR (current prices)
Imports (goods & services)	16 510	million EUR (current prices)
Balance (goods & services)	260	million EUR (current prices)
Exports of agricultural products	3 057	million EUR (current prices)
Imports of agricultural products	3 011	million EUR (current prices)
Current account balance	2.3	% of GDP
General government balance	-7.4	% of GDP
General government gross debt	47.5	% of GDP

Sources: European Commission, Eurostat (Online Data Table: urt\_d3area, urt\_pjanaggr3), and Directorate General for Economic and Financial Affairs.

\*Data refer to the year 2016

(e) Estimation

Updated: June 2021

## 1. KEY DATA

Macroeconomics				
<b>Population</b>				
<b>Total population (number of persons), of which:</b>	<b>2020</b>	<b>1 907 675</b>	<b>0.4%</b>	<b>of EU27_2020</b>
in predominantly rural regions	2020	21.6%	20.8%	in EU27_2020
in intermediate regions	2020	45.5%	38.9%	in EU27_2020
in predominantly urban regions	2020	32.9%	40.3%	in EU27_2020
<b>Population in Predominantly rural regions (Persons)</b>	<b>2020</b>	<b>412 347</b>	<b>0.4%</b>	<b>of EU27_2020</b>
<b>GDP (current basic prices)</b>				
Total (million EUR)	2020	29 334	0.2%	of EU27_2020
GDP per capita (EUR/person)	2020	15 205	29 355	in EU27_2020
GDP per capita (PPS/person)	2020	21 200	29 700	in EU27_2020
Real GDP growth rate (% change over previous year)	2020	-5.6%	-7.4%	in EU27_2020
<b>Gross value added</b>				
Agriculture, forestry and fishing (% of total GVA)	2020	4.3%	1.9%	in EU27_2020
<b>Financial aspects</b>				
<b>Common Agricultural Policy expenditure</b>				
<b>Total expenditure (million EUR), of which:</b>	<b>2020</b>	<b>442</b>	<b>0.8%</b>	<b>of EU27_2020</b>
Direct payments (%)	2020	62.8%	69.9%	in EU27_2020
Market measures (%)	2020	0.7%	4.6%	in EU27_2020
Rural development (%)	2020	36.5%	25.5%	in EU27_2020
<b>Economic accounts of agriculture</b>				
<b>Agricultural output (current basic prices)</b>				
<b>Agricultural output (million EUR), of which:</b>	<b>2020 (e)</b>	<b>1 554</b>	<b>0.4%</b>	<b>of EU27_2020</b>
<b>Crop output, of which:</b>		<b>64.6%</b>	<b>0.5%</b>	<b>of EU27_2020</b>
Cereals (including seeds)		37.8%	1.3%	of EU27_2020
Industrial crops		12.9%	1.1%	of EU27_2020
Forage plants		5.6%	0.3%	of EU27_2020
Vegetables and horticultural products		4.0%	0.1%	of EU27_2020
Potatoes		3.0%	0.4%	of EU27_2020
Fruits		0.9%	0.0%	of EU27_2020
Wine		0.0%	0.0%	of EU27_2020
Olive oil		0.0%	0.0%	of EU27_2020
<b>Animal output, of which:</b>		<b>33.7%</b>	<b>0.3%</b>	<b>of EU27_2020</b>
Cattle		2.9%	0.2%	of EU27_2020
Pigs		4.4%	0.2%	of EU27_2020
Sheep and goats		0.2%	0.1%	of EU27_2020
Poultry		3.7%	0.3%	of EU27_2020
Milk		18.6%	0.5%	of EU27_2020
Eggs		2.9%	0.5%	of EU27_2020
Gross value added at current prices (million EUR)	2020 (e)	592	0.3%	of EU27_2020
<b>Agricultural input (current basic prices)</b>				
Total intermediate consumption (million EUR)	2020 (e)	1 090	0.5%	of EU27_2020
<b>Agricultural income (real prices)</b>				
Agricultural Income*(% change over previous year, 2010=100)	2020 (e)	7.1%	-1.2%	in EU27_2020
<b>Farm structure</b>				
<b>Holdings</b>				
<b>Total (No), of which:</b>	<b>2016</b>	<b>69 930</b>	<b>0.7%</b>	<b>of EU27_2020</b>
UAA < 5 ha (%)	2016	35.2%	66.6%	in EU27_2020
Economic size < 4 000 €	2016	69.8%	54.9%	in EU27_2020
Holder < 35 years (%)	2016	4.8%	5.1%	in EU27_2020
Holder > 64 years (%)	2016	30.2%	32.8%	in EU27_2020
UAA per holding (ha)	2016	27.6	15.2	in EU27_2020
<b>Labour force</b>				
AWU (No)	2016	76 860	0.9%	of EU27_2020
Female farm holders (%)	2016	45.4%	30.7%	in EU27_2020
Male farm holders (%)	2016	54.6%	68.8%	in EU27_2020
Agriculture in % of total employment	2020	7.3%	4.0%	in EU27_2020

Sources: European Commission(Ameco), Eurostat(Online Data Table: urt\_pjanaggr3, aact\_eaa01, ef\_m\_farmleg, ef\_m\_farmang, ef\_if\_main, lfsa\_egan2) and Directorate General for Agriculture and Rural Development.

\*Indicator A- See definition at page 10

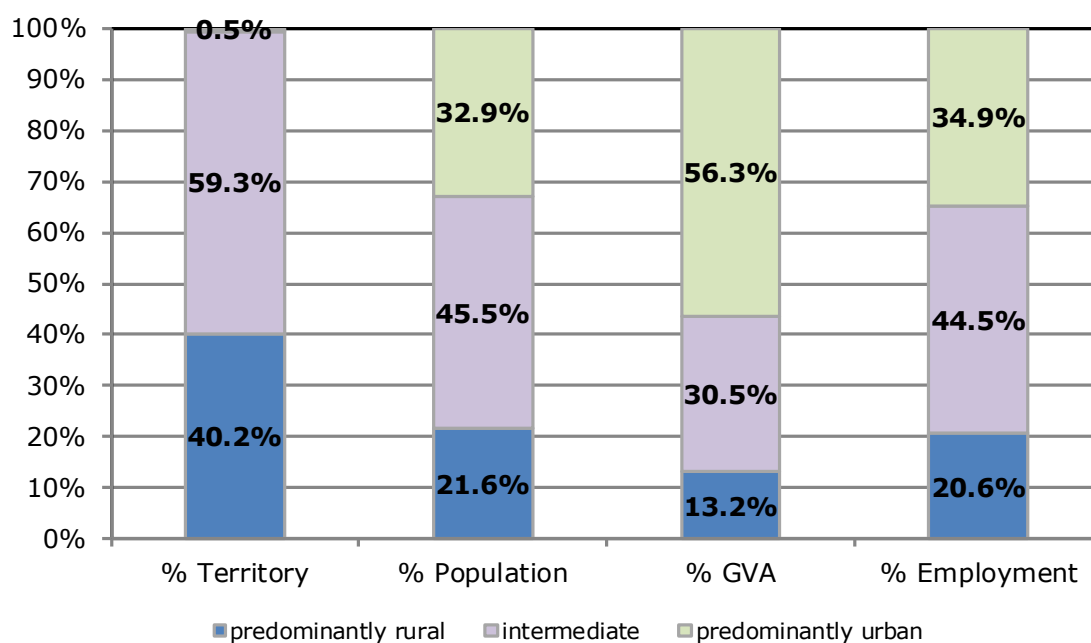
## 2. POPULATION AND ECONOMY

### Importance of rural areas

	Territory (km <sup>2</sup> )	Population (persons)	GVA (Million EUR)	Employment (persons)
Year	2016	2020	2018	2019
Predominantly Rural Regions	25 992	412 347	3 329	179 400
Intermediate Regions	38 290	867 841	7 701	387 300
Predominantly Urban Regions	304	627 487	14 232	303 700
<b>Total</b>	<b>64 586</b>	<b>1 907 675</b>	<b>25 262</b>	<b>870 400</b>

Source: Eurostat (Online Data Table: urt\_d3area, urt\_pjanagr3, urt\_10r\_3gva, urt\_lfe3emp)

Updated: June 2021



Degree of urbanisation	Share of land (%)	Share of population (%)
	2018	2018
Rural areas	87.8%	36.4%
Towns and suburbs	11.4%	21.2%
Cities	0.8%	42.3%

Source: Eurostat, GISCO

\*Based on 2011 population grid, LAU 2018 delineation and NUTS 2016.

## 2. POPULATION AND ECONOMY

### Economic forecast

Indicators	2013	2014	2015	2016	2017	2018	2019	2020	2021(f)	2022(f)
<b>GDP</b>										
In million EUR (current prices)	22 968	23 614	24 561	25 360	26 962	29 143	30 421	29 334	31 022	33 585
Per capita (in PPS; current prices)	16 500	17 100	17 900	18 500	19 600	20 900	21 500	21 200	22 300	24 100
<b>% change over previous period</b>										
GDP growth at constant prices (2015=100)	2.3%	1.1%	4.0%	2.4%	3.3%	4.0%	2.1%	-5.6%	4.9%	3.5%
GDP deflator (2015=100)	1.0%	1.7%	0.0%	0.9%	3.0%	3.9%	2.4%	1.0%	1.3%	1.4%
Harmonised index of consumer prices	0.0%	0.7%	0.2%	0.1%	2.9%	2.6%	2.7%	0.3%	1.3%	1.8%
Exports (goods and services)	0.7%	6.2%	3.0%	4.0%	6.4%	4.3%	2.1%	-7.5%	4.2%	4.0%
Imports (goods and services)	-0.1%	2.9%	1.6%	3.6%	8.6%	6.4%	3.0%	-8.6%	6.0%	5.2%
<b>Net exports of goods and services (million EUR)</b>	<b>- 995</b>	<b>- 695</b>	<b>- 424</b>	<b>83</b>	<b>- 175</b>	<b>- 230</b>	<b>- 255</b>	<b>260</b>	<b>- 90</b>	<b>- 436</b>
<b>% of total employment</b>										
Unemployment rate	11.9	10.8	9.9	9.6	8.7	7.4	6.3	8.3	8.0	7.5
<b>% of GDP</b>										
Current account balance	-2.8	-1.6	-0.6	1.6	1.3	-0.3	-0.6	2.3	1.2	0.1
General government balance	-1.2	-1.6	-1.4	0.2	-0.8	-0.8	-0.6	-7.4	-3.5	-3.3
General government gross debt	40.0	41.6	37.1	40.4	39.0	37.1	36.9	47.5	45.9	45.5

Source: European Commission, Directorate General for Economic and Financial Affairs

Updated: June 2021

f: forecast

## 3.1. AGRICULTURE: FINANCIAL ASPECTS

### CAP expenditure

Measures	2020		2020	
	1 000 EUR		% of total	% of heading
Decoupled direct aids	227 756		51.5%	82.1%
Other direct aids	46 877		10.6%	16.9%
Additional amounts of aid	0		0.0%	0.0%
Reimbursement of direct aids in relation to financial discipline	2 673		0.6%	1.0%
<b>Direct payments (Total)</b>	<b>277 306</b>		<b>62.8%</b>	<b>100.0%</b>
Olive oil	0		0.0%	0.0%
Textile plants	0		0.0%	0.0%
Fruit and vegetables	603		0.1%	19.8%
Wine sector			0.0%	0.0%
Promotion	576		0.1%	18.9%
Other plant products/measures			0.0%	0.0%
Milk and milk products			0.0%	0.0%
Beef and veal	50		0.0%	1.6%
Sheepmeat and goatmeat	0		0.0%	0.0%
Pigmeat, eggs, poultry and other	205		0.0%	6.7%
School schemes*	1 614		0.4%	53.0%
<b>Market measures (Total)</b>	<b>3 048</b>		<b>0.7%</b>	<b>100%</b>
<b>Rural development (Total)</b>	<b>161 492</b>		<b>36.5%</b>	<b>100%</b>
<b>TOTAL</b>	<b>441 846</b>		<b>100.0%</b>	

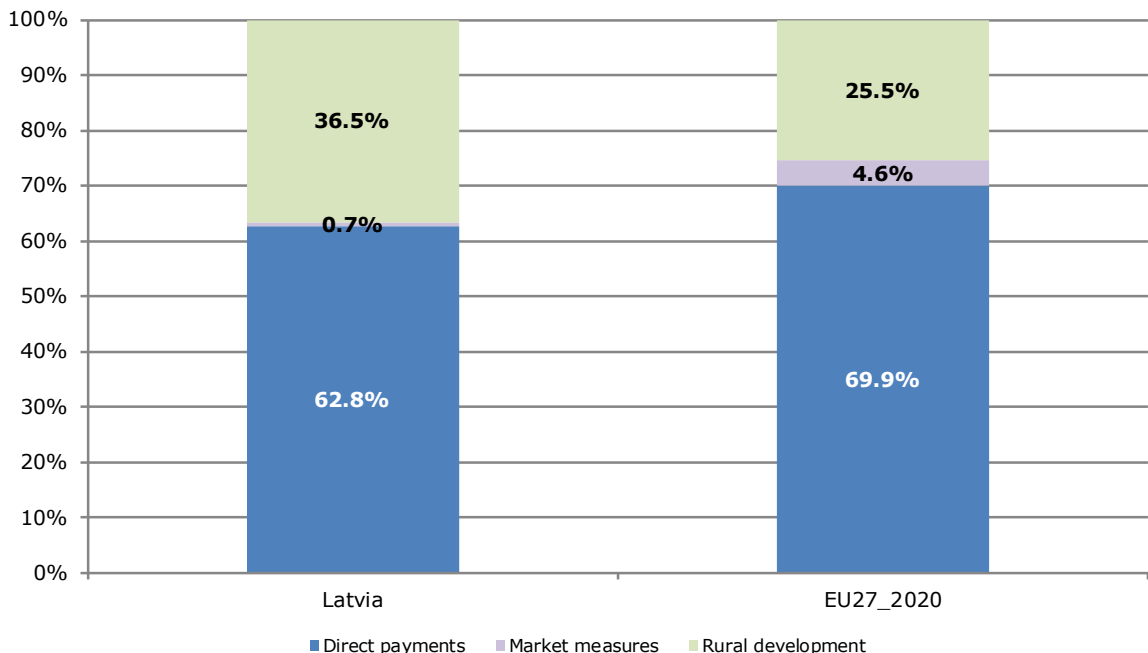
Note: Expenditure in commitments for direct payments and market measures; ceilings of support for rural development. Negative values represent beneficiaries that in total reimbursed money to the EAGF (recoveries, corrections, etc.)

\* Programme implementation based on school years; reimbursement possible in the next financial year

Source: European Commission, Directorate General for Agriculture and Rural Development

Updated: June 2021

### Distribution of CAP expenditure



## 3.2. AGRICULTURE: FINANCIAL ASPECTS

### Distribution of direct aids to the producers

Size-class of aid (all direct payments)	Financial year 2019*			
	Beneficiaries		Payments in EUR	
	x 1 000	% of total	x 1 000	% of total
< 0 €	-	0.00%		0.0%
≥ 0 and < 500 €	8.55	14.83%	2 621	1.0%
≥ 500 and < 1 250 €	27.00	46.84%	18 463	7.3%
≥ 1 250 and < 2 000 €	6.44	11.18%	10 187	4.0%
≥ 2 000 and < 5 000 €	7.61	13.20%	23 674	9.4%
≥ 5 000 and < 10 000 €	3.38	5.87%	23 716	9.4%
≥ 10 000 and < 20 000 €	2.25	3.90%	31 927	12.6%
≥ 20 000 and < 50 000 €	1.60	2.77%	49 097	19.4%
≥ 50 000 and < 100 000 €	0.54	0.93%	37 277	14.8%
≥ 100 000 and < 150 000 €	0.13	0.22%	15 875	6.3%
≥ 150 000 and < 200 000 €	0.06	0.10%	10 273	4.1%
≥ 200 000 and < 250 000 €	0.04	0.06%	8 251	3.3%
≥ 250 000 and < 300 000 €	0.02	0.04%	6 038	2.4%
≥ 300 000 and < 500 000 €	0.03	0.05%	10 125	4.0%
≥ 500 000 €	0.01	0.01%	5 071	2.0%
<b>Total</b>	<b>57.64</b>	<b>100%</b>	<b>252 595</b>	<b>100%</b>

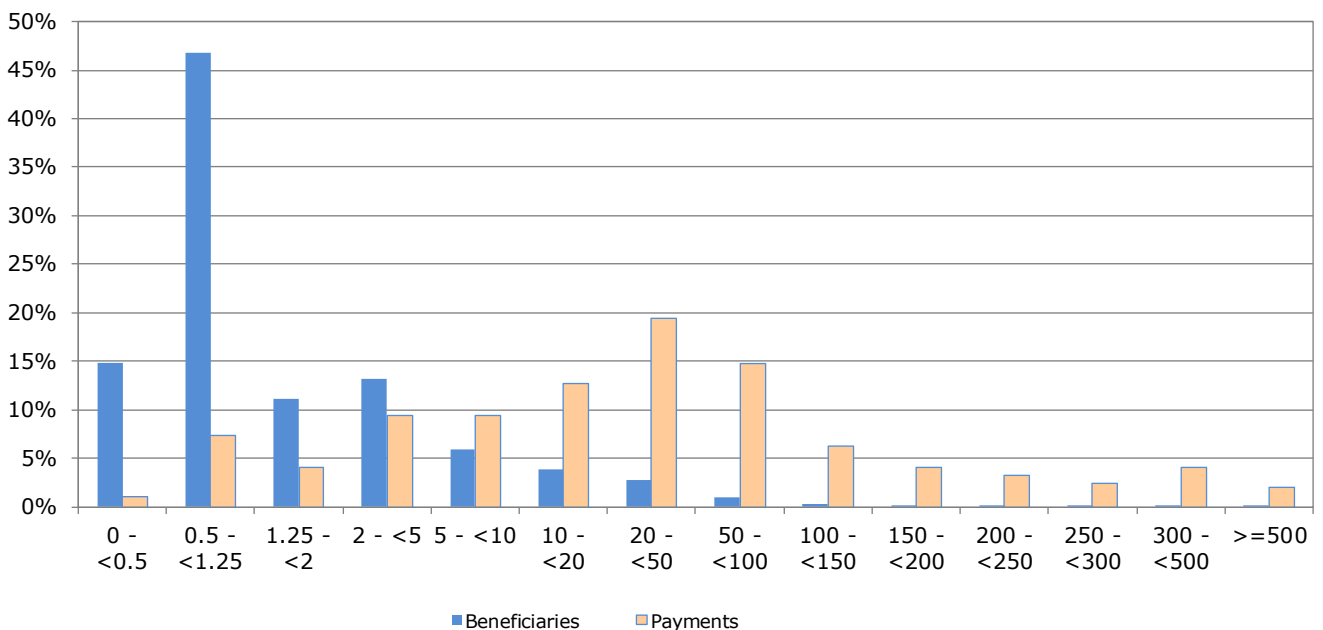
Source: European Commission, Directorate General for Agriculture and Rural Development.

\* Figures for financial year 2020 will become available during the second half of 2021. Negative values represent beneficiaries that in total reimbursed money to the EAGF (recoveries, corrections, etc.)

Note: In order to protect the anonymity of the beneficiaries, numbers less than 10 have been made invisible in this table.

Updated: June 2021

#### Indicative figures on the distribution of direct aid by size-class of aid (1 000 EUR)



## 4.1. AGRICULTURE: ECONOMIC ACCOUNTS

### Agricultural output

Output components (real prices)	2018	2019	2020 (e)		
	Million EUR		Million EUR	% of total	% of EU27_2020
<b>Cereals:</b>	<b>285</b>	<b>396</b>	<b>457</b>	<b>38.5%</b>	<b>1.1%</b>
Wheat and spelt	207	310	363	31%	1.9%
Rye and meslin	9	17	15	1%	1.3%
Barley	40	34	35	3%	0.5%
Oats and summer cereal mixtures	22	27	33	3%	2.3%
Grain maize		0	0	0%	0.0%
Rice		0	0	0%	0.0%
Other cereals	6	7	11	1%	0.6%
<b>Industrial crops:</b>	<b>89</b>	<b>140</b>	<b>156</b>	<b>13.1%</b>	<b>0.9%</b>
Oil seeds and oleaginous fruits	67	118	129	11%	1.4%
Protein crops	19	19	25	2%	2.3%
Raw tobacco		0	0	0%	0.0%
Sugar beet		0	0	0%	0.0%
Other industrial crops	3	2	2	0%	0.0%
<b>Forage plants</b>	<b>54</b>	<b>65</b>	<b>67</b>	<b>5.7%</b>	<b>0.3%</b>
<b>Vegetables and horticultural products</b>	<b>51</b>	<b>66</b>	<b>49</b>	<b>4.1%</b>	<b>0.1%</b>
<b>Potatoes</b>	<b>45</b>	<b>60</b>	<b>36</b>	<b>3.1%</b>	<b>0.3%</b>
<b>Fruits</b>	<b>11</b>	<b>10</b>	<b>10</b>	<b>0.9%</b>	<b>0.0%</b>
<b>Wine</b>		<b>0</b>	<b>0</b>	<b>0%</b>	<b>0.0%</b>
<b>Olive oil</b>		<b>0</b>	<b>0</b>	<b>0%</b>	<b>0.0%</b>
<b>Other crop products</b>	<b>2</b>	<b>6</b>	<b>5</b>	<b>0%</b>	<b>0.3%</b>
<b>Crop output</b>	<b>538</b>	<b>742</b>	<b>781</b>	<b>65.8%</b>	<b>0.4%</b>
<b>Animals:</b>	<b>136</b>	<b>140</b>	<b>135</b>	<b>11.4%</b>	<b>0.2%</b>
Cattle	40	36	35	2.9%	0.1%
Pigs	54	60	53	4.4%	0.2%
Equines	0	0	0	0.0%	0.0%
Sheep and goats	3	3	3	0.2%	0.1%
Poultry	38	40	44	3.7%	0.3%
Other animals	0	0	0	0.0%	0.0%
<b>Animal products:</b>	<b>276</b>	<b>275</b>	<b>272</b>	<b>22.9%</b>	<b>0.5%</b>
Milk	224	229	224	18.9%	0.5%
Eggs	32	33	35	2.9%	0.4%
Other animal products	20	13	13	1.1%	0.6%
<b>Animal output</b>	<b>412</b>	<b>415</b>	<b>407</b>	<b>34.2%</b>	<b>0.3%</b>
<b>Agricultural goods output</b>	<b>949</b>	<b>1 156</b>	<b>1 188</b>	<b>100.0%</b>	<b>0.4%</b>

(e) 2020 data are estimates and may still change.

Updated: June 2021

Source: Eurostat(Online Data Table: aact\_eaa04), Economic Accounts for Agriculture (Production value at basic price).

## 4.2. AGRICULTURE: ECONOMIC ACCOUNTS

### Agricultural input

Input components (real prices)	2018	2019	2020 (e)	2019/2018	2020 (e) /2019
	Million EUR			% Change	
Seeds and planting stock	38	41	39	8.1%	-4.5%
Energy	136	138	127	1.7%	-8.0%
Fertilisers and soil improvers	105	114	116	8.6%	1.7%
Plant protection products	56	59	67	5.9%	13.9%
Veterinary expenses	10	10	9	-4.7%	-1.9%
Feedingstuffs	201	210	205	4.5%	-2.0%
Maintenance of materials	69	67	68	-2.2%	0.6%
Maintenance of buildings	14	13	14	-6.2%	6.1%
Agricultural services	20	21	21	5.1%	-0.3%
Other goods and services	140	159	165	13.9%	3.7%
<b>Total intermediate consumption</b>	<b>804</b>	<b>848</b>	<b>848</b>	<b>5.5%</b>	<b>0.0%</b>
<b>Fixed capital consumption</b>	<b>109</b>	<b>119</b>	<b>127</b>	<b>9.1%</b>	<b>7.0%</b>

(e) 2020 data are estimates and may still change.

Source: Eurostat(Online Data Table: aact\_eaa04), Economic Accounts for Agriculture (Production value at basic price)

Updated: June 2021

### Agricultural income

By category of product (real prices)	2018	2019	2020 (e)	2019/2018	2020 (e) /2019
	Million EUR			% Change	
<b>Output of the agricultural "industry":</b>	<b>1 083</b>	<b>1 280</b>	<b>1 309</b>	<b>18.2%</b>	<b>2.2%</b>
Crop output	538	742	781	37.9%	5.4%
Animal output:	412	415	407	0.7%	-1.8%
<i>Animals</i>	136	140	135	3.0%	-3.1%
<i>Animal products</i>	276	275	272	-0.5%	-1.2%
Agricultural services	20	21	21	5.1%	-0.3%
Secondary activities	114	103	100	-9.4%	-3.5%
<b>- Intermediate consumption</b>	<b>804</b>	<b>848</b>	<b>848</b>	<b>5.5%</b>	<b>0.0%</b>
<b>= Gross value added at basic prices</b>	<b>279</b>	<b>432</b>	<b>461</b>	<b>54.9%</b>	<b>6.7%</b>
- Consumption of fixed capital	109	119	127	9.1%	7.0%
- Taxes	16	16	16	-5.3%	3.0%
+ Subsidies	266	231	238	-13.5%	3.3%
<b>= Factor income</b>	<b>420</b>	<b>528</b>	<b>555</b>	<b>25.7%</b>	<b>5.2%</b>
<b>Agricultural income* (2010=100)</b>	<b>131.2</b>	<b>166.2</b>	<b>178.0</b>	<b>26.7%</b>	<b>7.1%</b>

(e) 2020 data are estimates and may still change.

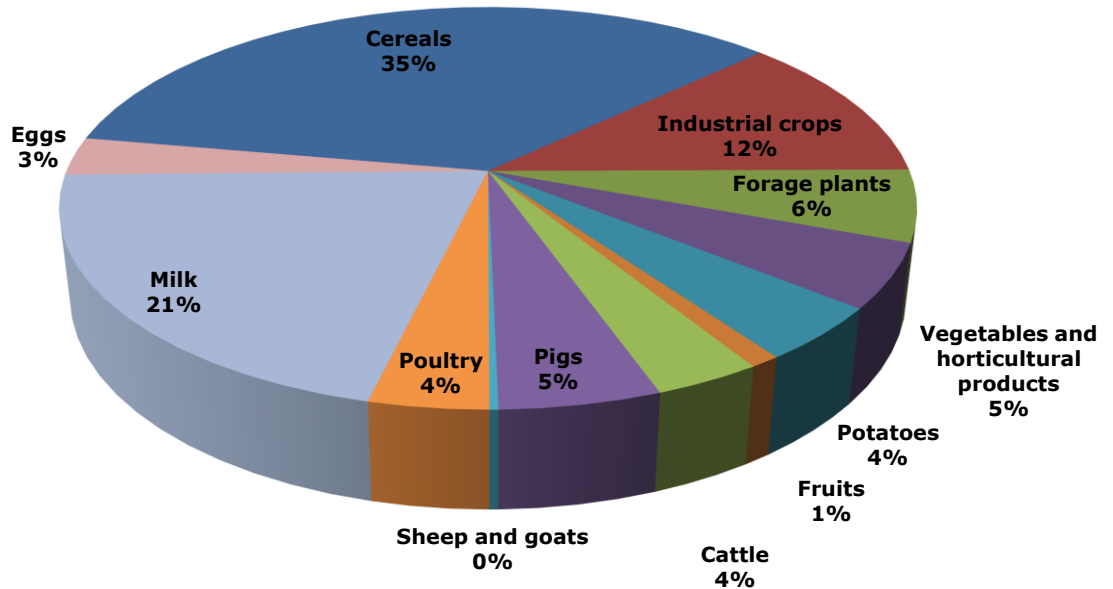
Updated: June 2021

Source: Eurostat(Online Data Table: aact\_eaa04 aact\_eaa06), Economic Accounts for Agriculture (Production value at basic price, Real Values, Index, 2010=100)

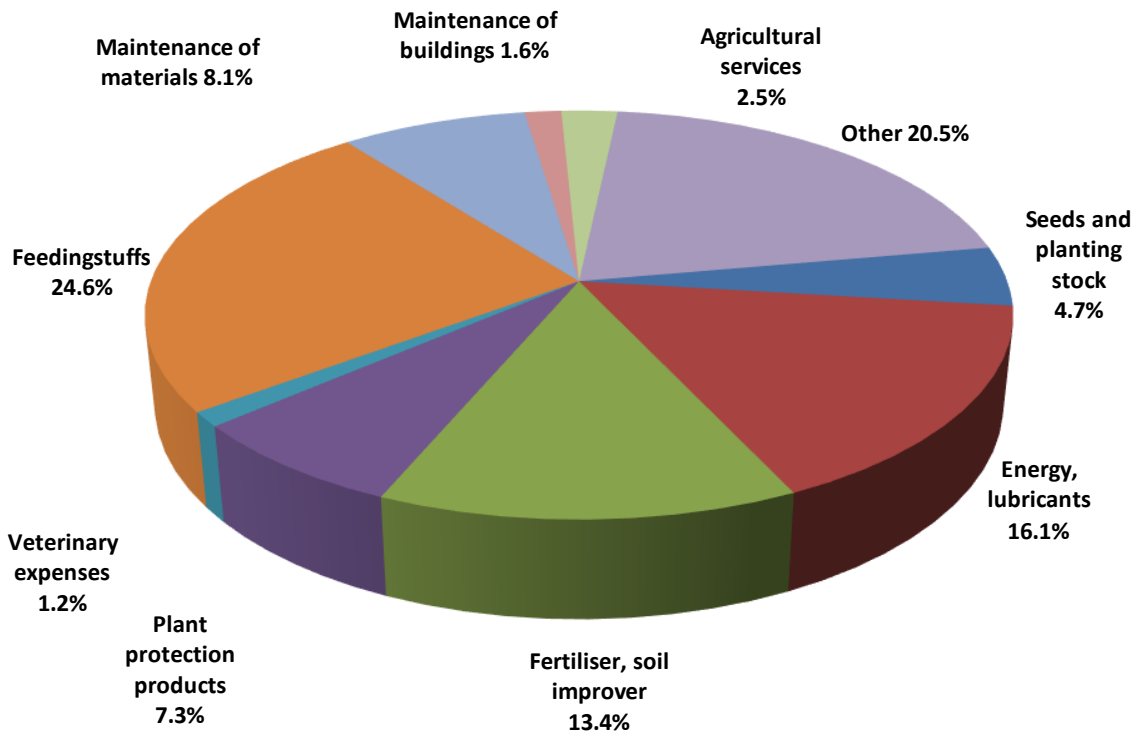


## 4.3. AGRICULTURE: ECONOMIC ACCOUNTS

### Output components (2018-2020 average)



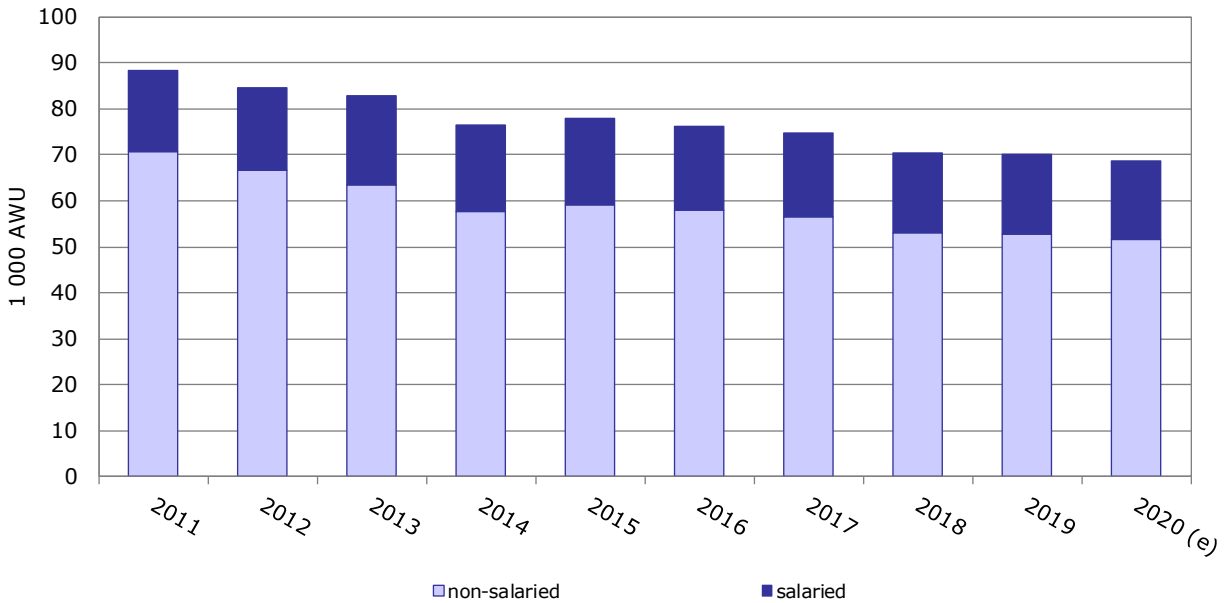
### Intermediate consumption (2018-2020 average)



Source: Eurostat (Online Data Table: aact\_eaa04) , Economic Accounts for Agriculture (values at real basic price)

## 4.4. AGRICULTURE: ECONOMIC ACCOUNTS

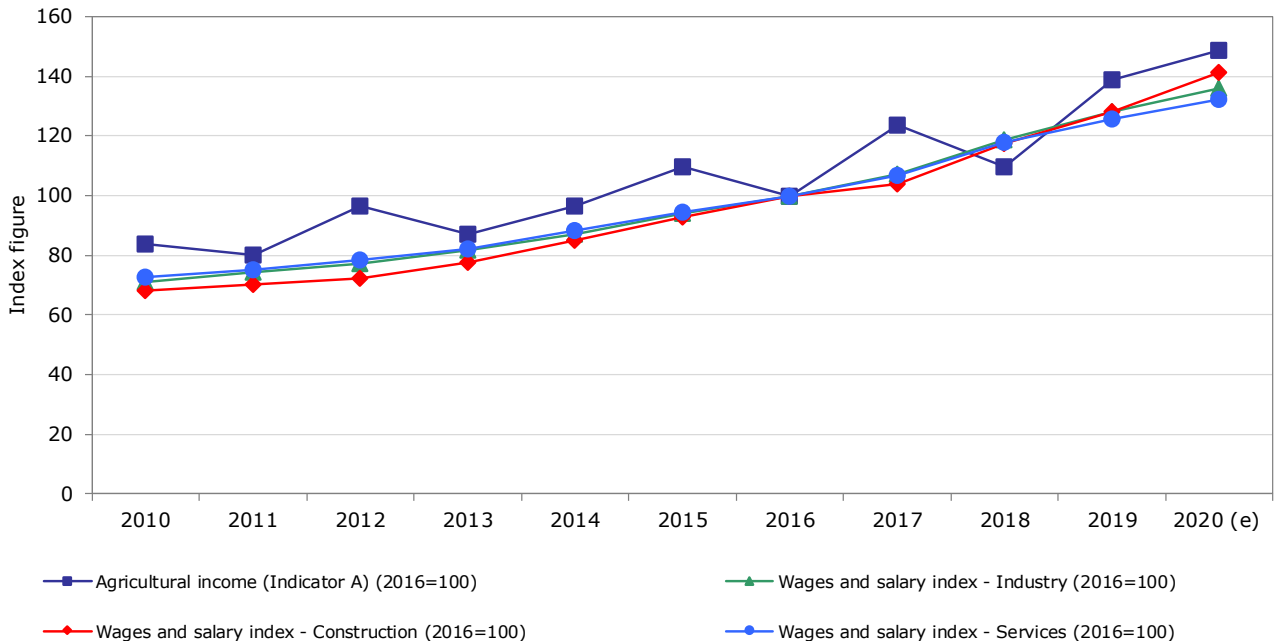
### Evolution of agricultural labour input



Source: Eurostat(Online Data Table: aact\_ali01)

Updated: June 2021

### Evolution of agricultural income (\*) compared to wages



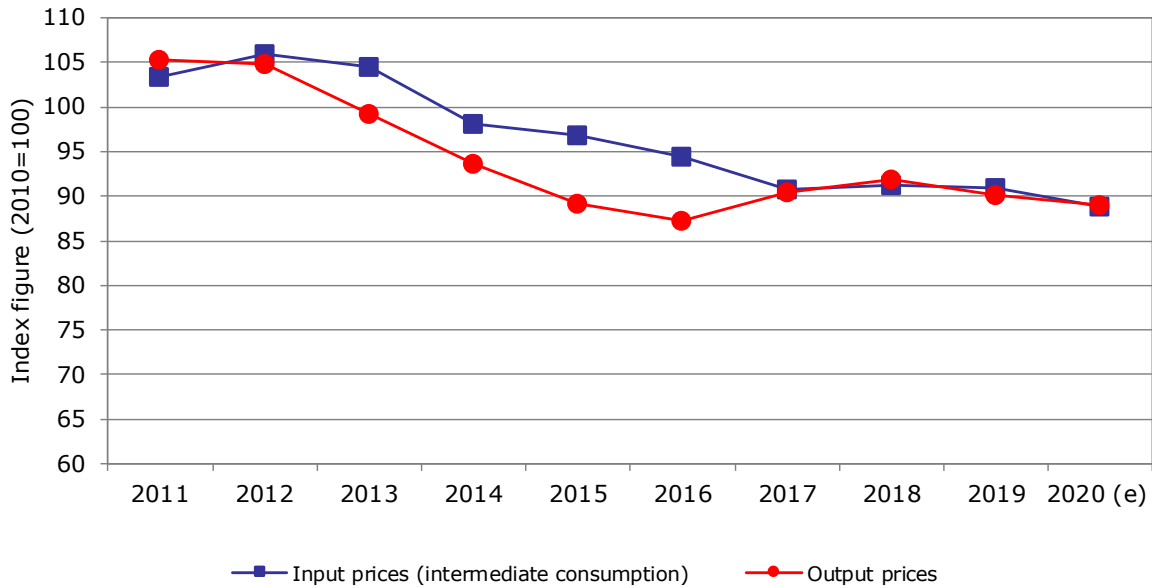
Source: Eurostat(Online Data Table: aact\_eaa06, lc\_lci\_r2\_a)

Updated: June 2021

(\*) The so-called indicator A is the real net value added at factor cost of agriculture per annual work unit (AWU). The net value added at factor cost (factor income) is calculated by subtracting the consumption of fixed capital from gross value added at basic prices and adding the value of subsidies less taxes. The AWU is defined as the work volume corresponding to one full-time employed worked.

## 4.5. AGRICULTURE: ECONOMIC ACCOUNTS

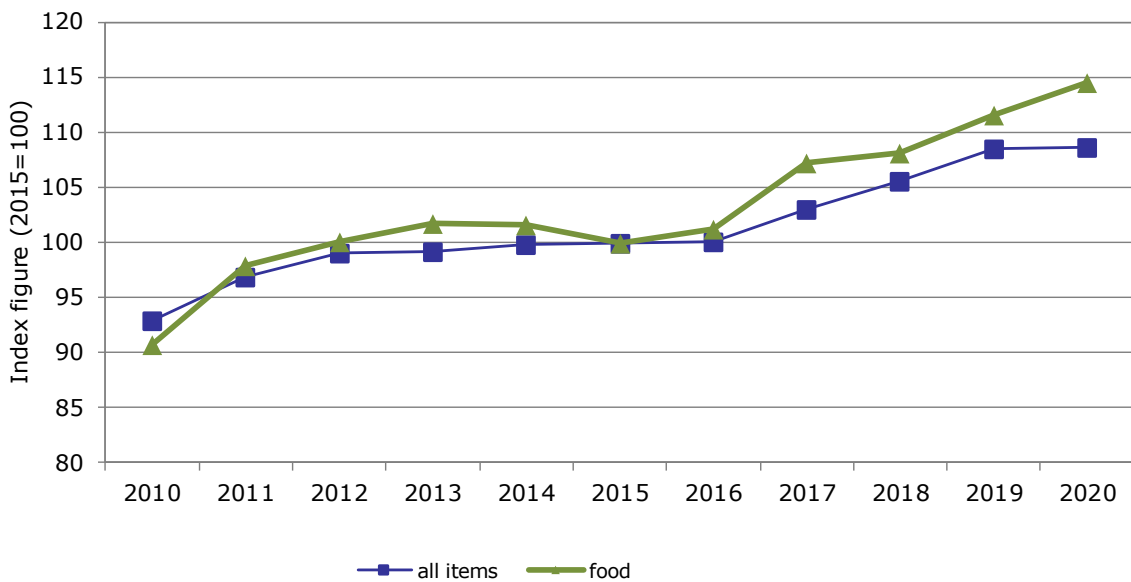
### Evolution of agricultural input and output prices



Source: Eurostat(Online data table: aact\_eaa05)

Updated: June 2021

### Evolution of harmonised indices of consumer prices

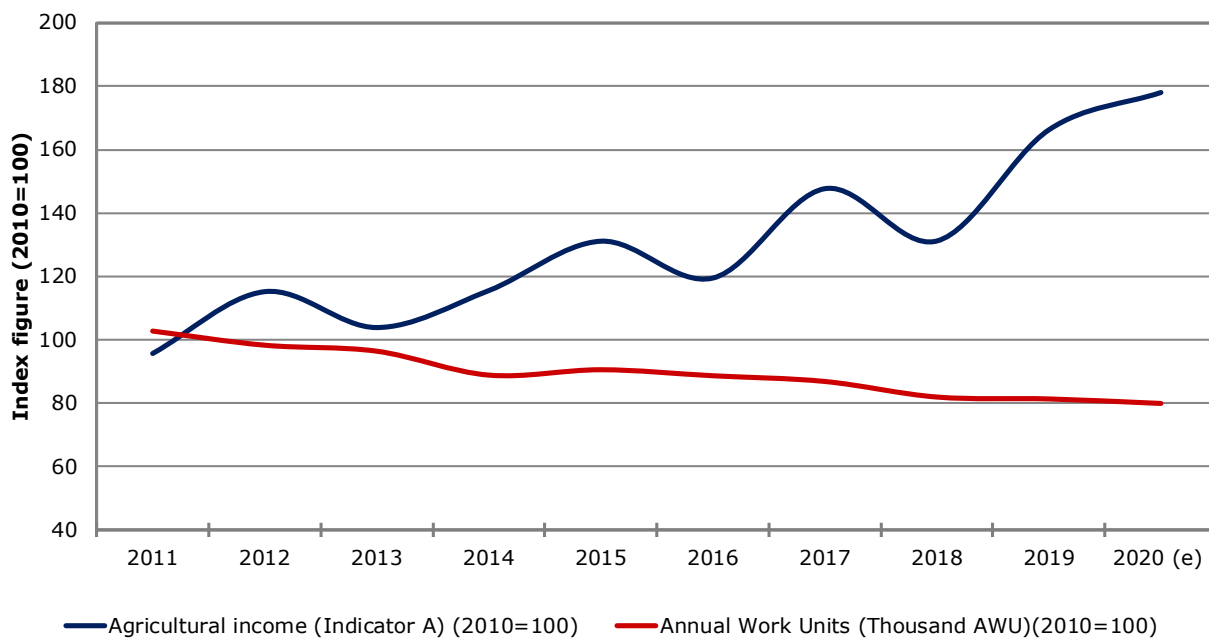


Source: Eurostat(Online Data Table: prc\_hicp\_aind)

Updated: June 2021

## 4.6. AGRICULTURE: ECONOMIC ACCOUNTS

### Farms' income and labour development index (real terms)

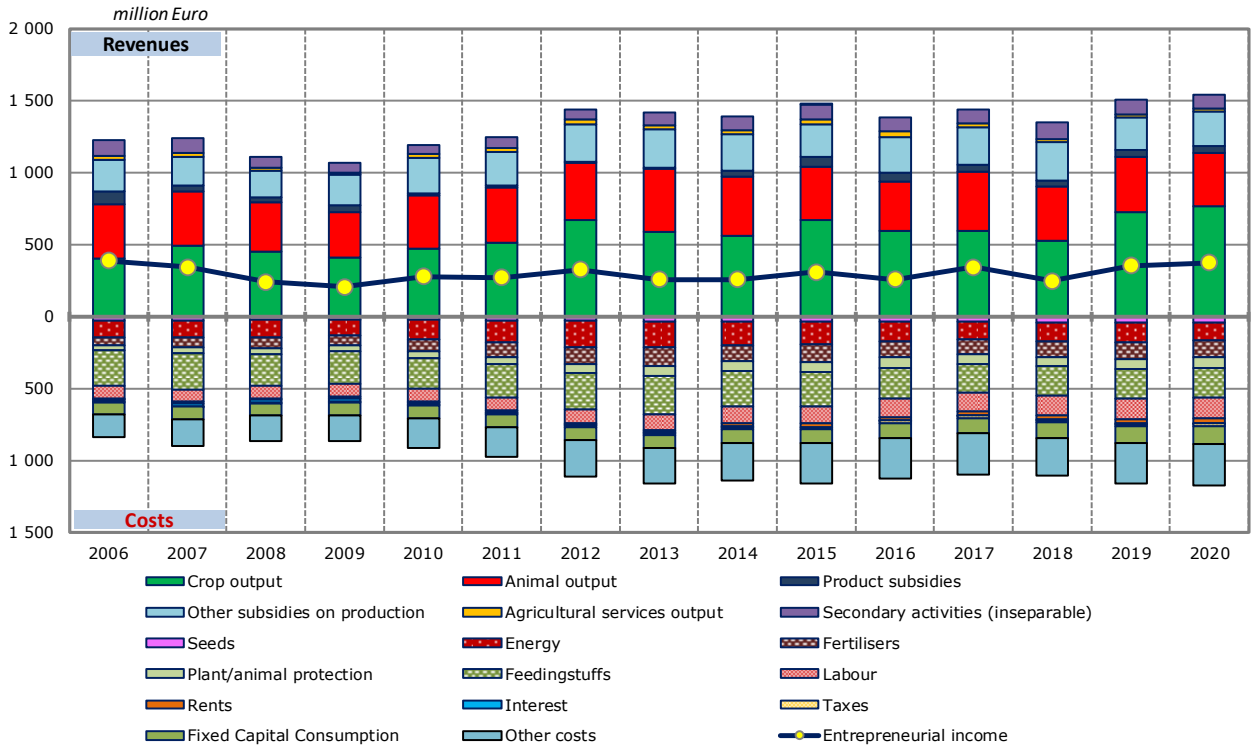


Source: Eurostat(Online Data Table: aact\_eaa06, aact\_ali01) and DG Agriculture and Rural Development

Updated: June 2021

## 4.7. AGRICULTURE: ECONOMIC ACCOUNTS

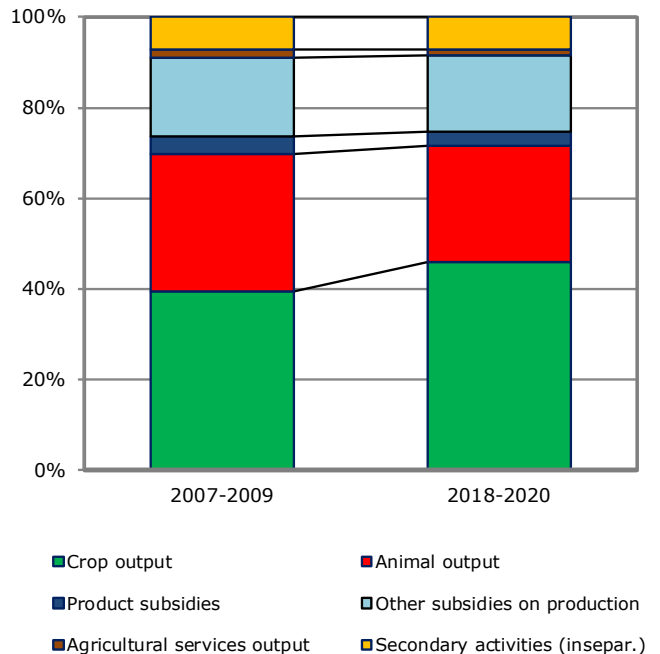
### Agricultural income (real prices)



#### Cost Structure



#### Revenue Structure



## 5.1. AGRICULTURAL TRADE

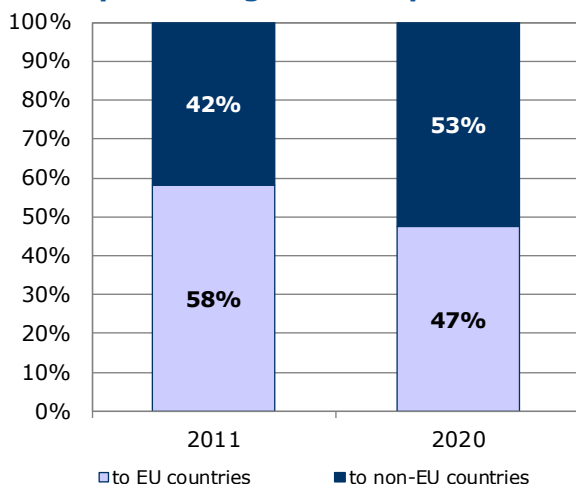
### Agricultural trade in 2020

By category of product	Total trade	Trade with EU countries		Trade with non-EU countries	
	Million EUR	Million EUR	% change 2020/2019	Million EUR	% change 2020/2019
<b>Exports</b>					
Commodities	1 001	396	3.5%	605	35.8%
Other primary products	485	415	4.9%	70	4.2%
Processed products	491	194	-4.6%	297	1.4%
Food preparations	320	236	9.8%	84	11.1%
Beverages	573	69	-22.5%	503	-9.9%
Non edible	188	139	6.0%	49	-6.2%
<b>Total agricultural products</b>	<b>3 057</b>	<b>1 449</b>	<b>0.4%</b>	<b>1 608</b>	<b>0.3%</b>
as % of total exports	21.6%	16.5%		30.1%	
<b>Imports</b>					
Commodities	501	412	20.4%	89	-17.7%
Other primary products	589	516	-2.9%	73	26.7%
Processed products	577	542	3.9%	35	7.6%
Food preparations	457	407	3.5%	50	7.4%
Beverages	540	326	-10.6%	214	22.9%
Non edible	348	315	22.5%	33	4.2%
<b>Total agricultural products</b>	<b>3 011</b>	<b>2 517</b>	<b>4.5%</b>	<b>494</b>	<b>9.62%</b>
as % of total imports	18.8%	20.7%		12.9%	
<b>Balance</b>					
Commodities	501	- 15		516	
Other primary products	- 104	- 101		- 3	
Processed products	- 87	- 348		262	
Food preparations	- 136	- 170		34	
Beverages	32	- 257		289	
Non edible	- 160	- 176		16	
<b>Total agricultural products</b>	<b>47</b>	<b>-1 068</b>		<b>1 114</b>	

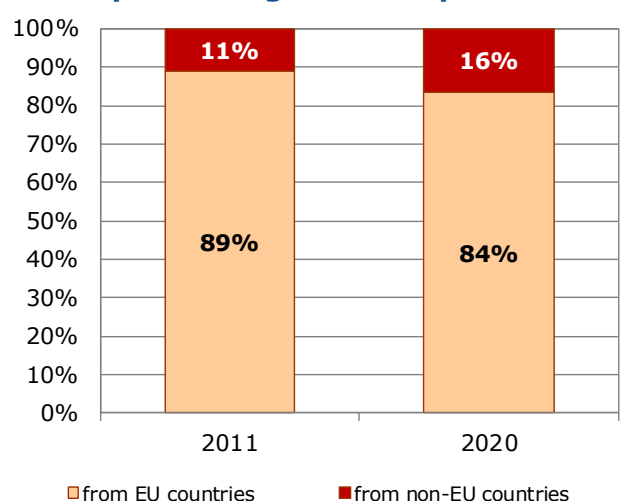
Source: Directorate General for Agriculture and Rural Development, based on COMEXT data

Updated: June 2021

#### Exports of agricultural products

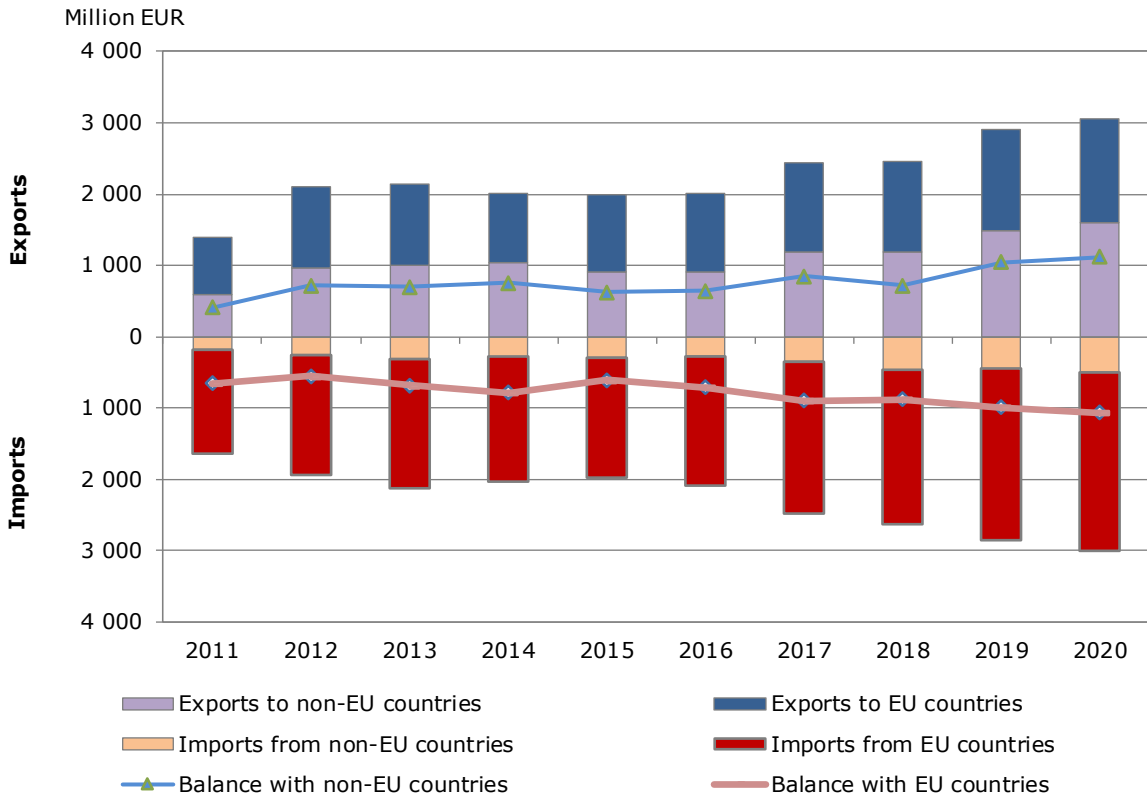


#### Imports of agricultural products

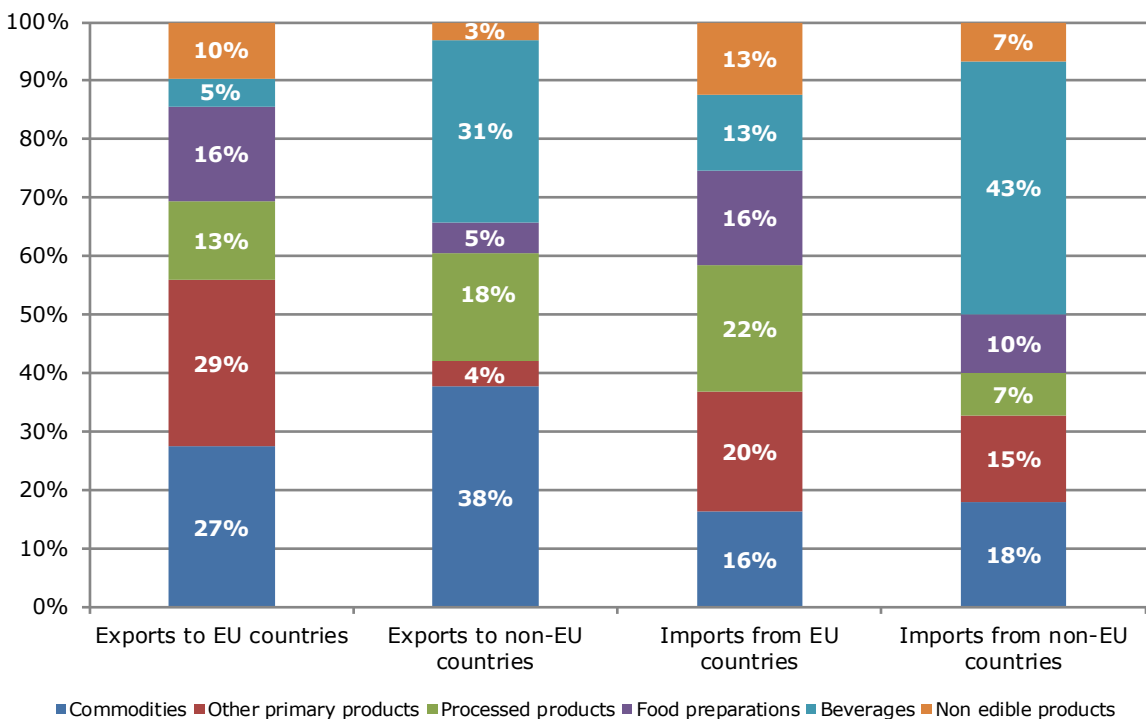


## 5.2. AGRICULTURAL TRADE

### Evolution of agricultural trade with EU and non-EU countries



### Structure of agricultural exports and imports



## 6.1. FARM STRUCTURE

### Structure of agricultural holdings

Holdings		2010		2016	
		Total	%	Total	%
By UAA (*)	< 5 ha	28 300	33.9%	24 610	35.2%
	5-10 ha	22 660	27.2%	15 880	22.7%
	10-20 ha	17 490	21.0%	14 560	20.8%
	20-30 ha	5 670	6.8%	4 990	7.1%
	30-50 ha	3 950	4.7%	3 760	5.4%
	50-100 ha	2 740	3.3%	2 890	4.1%
	> 100 ha	2 570	3.1%	3 250	4.6%
By economic size (**)	< 4 000 €	60 700	72.8%	44 690	63.9%
	< 8 000 €	10 500	12.6%	9 050	12.9%
	< 15 000 €	5 080	6.1%	5 800	8.3%
	< 25 000 €	2 710	3.2%	3 390	4.8%
	< 50 000 €	2 180	2.6%	3 190	4.6%
	< 100 000 €	1 120	1.3%	1 790	2.6%
	< 250 000 €	730	0.9%	1 240	1.8%
	< 500 000 €	230	0.3%	460	0.7%
=/> 500 000 €	160	0.2%	320	0.5%	
By LSU (***)	0	35 210	42.2%	26 280	37.6%
	0-5	36 320	43.6%	32 760	46.8%
	5-10	5 490	6.6%	4 280	6.1%
	10-15	2 000	2.4%	1 890	2.7%
	15-20	1 160	1.4%	1 090	1.6%
	20-50	2 060	2.5%	2 220	3.2%
	50-100	660	0.8%	840	1.2%
	100-500	390	0.5%	500	0.7%
	> 500	80	0.1%	90	0.1%
By age of holder	< 35 years	4 540	5.4%	3 360	4.8%
	35-44 years	14 260	17.1%	8 910	12.7%
	45-54 years	22 470	26.9%	17 880	25.6%
	55-64 years	17 320	20.8%	18 670	26.7%
	> 64 years	24 810	29.8%	21 110	30.2%
	not applicable	:	:	:	:
<b>Total</b>	<b>83 400</b>	<b>100%</b>	<b>69 930</b>	<b>100%</b>	
UAA in 1 000 ha	1 796		1 931		
UAA (ha) per holding	21.5		28		

Source: Eurostat (Online Data Table: ef\_m\_farmleg), Farm Structure Survey

Updated: June 2021

(\*) UAA = Utilised agricultural area.

(\*\*) Economic size: The standard output of an agricultural product (crop or livestock), abbreviated as SO, is the average monetary value of the agricultural output at farm-gate price, in euro per hectare or per head of livestock. There is a regional SO coefficient for each product, as an average value over a reference period (5 years, except for the SO 2004 coefficient calculated using the average of 3 years). The sum of all the SO per hectare of crop and per head of livestock in a farm is a measure of its overall [economic size](#), expressed in euro.

(\*\*\*) LSU = Livestock units. A LSU is equivalent to a dairy cow. The number of animals (heads) is converted into LSU using a set of coefficients reflecting the feed requirements of the different animal categories.



## 6.2. FARM STRUCTURE

### Structure of farm labour force

2016			
Family labour force		Non family labour force	
persons:	141 250	Data not available	
of which women:	48.4%		
AWUs (*):	61 890	AWUs:	13 820
Holders	Family members	Regular non family labour force	Non regular non family labour force
persons:	persons:	persons:	Data not available
69 790	71 460	21 380	
of which women:	of which women:	of which women:	
45.4%	51.3%	37.8%	
AWUs:	AWUs:	AWUs:	AWUs:
33 380	28 510	13 820	1 150
<b>Total farm labour force (persons)</b>		162 630	
<b>Total farm labour force (AWUs)</b>		76 860	

Source: Eurostat(Online Data Table: ef\_lf\_main), Farm Structure Survey

Updated: June 2021

\* AWUs = Annual work units. An AWU is equivalent to a worker employed on a full time basis for one year.

## 6.3. FARM STRUCTURE

### Structure of farm livestock

#### Livestock and holdings with livestock in 2016

	Livestock unit (LSU)	Head (animal)	Thousand heads (animals)	Holding*	Percent structure	
					Livestock unit (LSU)	Holding*
<b>Livestock</b>	<b>498 640</b>	<b>:</b>	<b>:</b>	<b>44 970</b>	<b>100%</b>	<b>100%</b>
Live horses, asses, mules and hinnies	6 720	8 410	:	3 230	1%	7%
Live bovine animals	325 010	434 670	:	24 140	65%	54%
Live swine	94 750	361 090	:	11 500	19%	26%
Live sheep	13 000	130 050	:	3 730	3%	8%
Live goats	1 410	14 080	:	2 100	0%	5%
Live poultry	56 640	:	4 650	27 490	11%	61%
Rabbits, breeding females	1 100	54 770	:	760	0%	2%
Bees (hives)	:	89 490	:	2 600	:	6%
Other animals	:	:	:	:	:	:

\*note that holdings can keep various animals at the same time so the number of holdings with "Livestock" is less than the sum of groups of holdings with particular animals

#### Number of holdings with livestock herds by size class of livestock units, in 2016

ANIMALS/holdings*	Less than 5 LSU	From 5 to 9.9 LSU	From 10 to 14.9 LSU	From 15 to 19.9 LSU	From 20 to 49.9 LSU	From 50 to 99.9 LSU	From 100 to 499.9 LSU	500 LSU or over
<b>Livestock</b>	<b>32 760</b>	<b>4 280</b>	<b>1 890</b>	<b>1 090</b>	<b>2 220</b>	<b>840</b>	<b>500</b>	<b>90</b>
Live horses, asses, mules and hinnies	2 230	420	170	100	170	90	50	10
Live bovine animals	14 110	3 860	1 740	1 010	2 090	810	480	50
Live swine	6 840	2 000	910	490	860	260	110	30
Live sheep	2 350	610	240	150	260	90	30	:
Live goats	1 690	210	60	30	70	20	10	:
Live poultry	22 130	2 430	1 000	590	970	270	100	10
Rabbits, breeding females	430	140	60	30	70	20	10	0

\*note that holdings can keep various animals at the same time so the number of holdings with "Livestock" is less than the sum of groups of holdings with particular animals

#### Number of livestock units in livestock herds by size classes of livestock units, in 2016

ANIMALS/LSU	Less than 5 LSU	From 5 to 9.9 LSU	From 10 to 14.9 LSU	From 15 to 19.9 LSU	From 20 to 49.9 LSU	From 50 to 99.9 LSU	From 100 to 499.9 LSU	500 LSU or over
<b>Livestock</b>	<b>43 780</b>	<b>30 150</b>	<b>23 130</b>	<b>18 790</b>	<b>68 730</b>	<b>58 880</b>	<b>90 700</b>	<b>164 470</b>
Live horses, asses, mules and hinnies	2 370	860	690	410	1 200	700	430	70
Live bovine animals	27 060	22 980	18 760	15 680	60 260	54 800	84 130	41 340
Live swine	5 040	2 600	1 560	1 070	2 660	1 240	3 710	76 870
Live sheep	2 430	2 100	1 490	1 270	3 050	1 530	1 130	:
Live goats	710	260	90	70	180	90	:	:
Live poultry	5 840	1 160	490	270	1 310	380	1 010	:
Rabbits, breeding females	340	180	50	20	90	140	:	0

Source: Eurostat online data tables ef\_m\_farmleg, ef\_lsk\_main.

Updated: September 2021

The data extracted in June and September 2021, for the most recent data see sources

This document does not necessarily represent the official views of the European Commission  
© European Union, 2020 - Reproduction authorised provided the source is acknowledged

Contact: DG Agriculture and Rural Development, Farm Economics Unit

Tel: +32-2-29 75471 / E-mail: [Agri-C3@ec.europa.eu](mailto:Agri-C3@ec.europa.eu)