

# The EU school fruit, vegetables and milk scheme



## Annual monitoring report

2017/2018 school year

*Country:* **GERMANY - Rhineland-Palatinate**

*Received on:* **30-01-2019**

Information by the country's competent authorities. The report is sent to, but not approved by, the Commission that may make comments.

Non-mandatory information, nevertheless recommended for the quality of the report, in grey.

Figures on budget execution (31 December 2018) are preliminary: corrections are possible and payments may still be made.

# 1. Budget execution

## 1.1. Expenditure for the supply/distribution of products (EUR)

	School fruit and vegetables			School milk			Total	
	Fresh	Processed	Total fruits and vegetables	Drinking milk and lactose-free versions	Cheese, curd, yoghurt and other milk products with no added flavouring, fruit, nuts or cocoa	Milk products with added flavouring, fruit, nuts or cocoa		Total milk and milk products
<b>EU aid</b>	1.585.083		<b>1.585.083</b>	358.926			<b>358.926</b>	<b>1.944.009</b>
<b>National Funds</b>	1.339.664		<b>1.339.664</b>	407.850			<b>407.850</b>	<b>1.747.514</b>
<i>of which: Public</i>								
<i>of which: Private</i>								
<b>Comments</b>				<i>Since not all schools wanted delivery on a weekly basis or higher frequency, not all earmarked funds were used</i>				

## 1.2. Expenditure for the educational measures (EUR)

	On school fruit and vegetables	On school milk	Total
<b>EU aid</b>			
<b>National Funds</b>			
<i>of which: Public</i>			
<i>of which: Private</i>			
<b>Comments</b>			

## 1.3. Expenditure for information, monitoring and evaluation (EUR)

	On school fruit and vegetables	On school milk	Total
<b>EU aid</b>			
<b>National Funds</b>			
<i>of which: Public</i>			
<i>of which: Private</i>			
<b>Comments</b>			

## 2.1 Participating children

	Participating children		
	Number of children	Number of children who participated in the school fruit and vegetables part	Number of children who participated in the school milk part
<b>Nurseries/Pre-schools</b>	288.197	285.477	73.033
<i>Of which: Nurseries</i>			
<i>Of which: Pre-schools</i>			
<b>Primary schools</b>	146.196	146.081	30.263
<b>Secondary schools</b>			
<b>Total</b>	<b>434.393</b>	<b>431.558</b>	<b>103.296</b>
<b>Comments</b>	2835 children received school milk and not school fruit and vegetables. They have been added to the total number of children who received school fruit and vegetables.		out of the 30263 pupils in primary schools, 8431 are in schools for special educational needs

## 2.2 Number of children in the target group

	Number of children in the target group set out in the strategy
<b>Nurseries/Pre-schools</b>	
<i>Of which: Nurseries</i>	
<i>Of which: Pre-schools</i>	
<b>Primary schools</b>	
<b>Secondary schools</b>	
<b>Total</b>	
<b>Comments</b>	



## 2.3 Total number of children

	Number of children eligible for the EU school fruit, vegetables and milk scheme
<b>Nurseries/Pre-schools</b>	
<i>Of which: Nurseries</i>	
<i>Of which: Pre-schools</i>	
<b>Primary schools</b>	
<b>Secondary schools</b>	
<b>Total</b>	
<b>Comments</b>	



### 3.1 Participating schools

	Participating schools		
	Number of schools	Number of schools that participated in the school fruit and vegetables part	Number of schools that participated in the school milk part
<b>Nurseries/Pre-schools</b>	2.090	2.058	1.036
<i>Of which: Nurseries</i>			
<i>Of which: Pre-schools</i>			
<b>Primary schools</b>	1.077	1.076	262
<b>Secondary schools</b>			
<b>Total</b>	<b>3.167</b>	<b>3.134</b>	<b>1.298</b>
<b>Comments</b>	33 educational establishments received school milk and not school fruit and vegetables.		The 262 primary schools include 85 special needs schools

### 3.2 Number of schools in the target group

	Number of schools in the target group	School fruit and vegetables part of the scheme	School milk part of the scheme
<b>Nurseries/Pre-schools</b>			
<i>Of which: Nurseries</i>			
<i>Of which: Pre-schools</i>			
<b>Primary schools</b>			
<b>Secondary schools</b>			
<b>Total</b>			
<b>Comments</b>			

### 3.3 Total number of schools

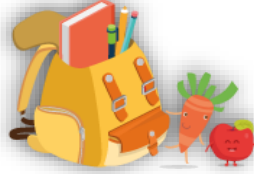
<b>Nurseries/Pre-schools</b>	
<i>Of which: Nurseries</i>	
<i>Of which: Pre-schools</i>	
<b>Primary schools</b>	
<b>Secondary schools</b>	
<b>Total</b>	
<b>Comments</b>	



## 4.1 Products supplied/distributed to schoolchildren and, if applicable, tasted by schoolchildren as part of educational measures

### 4.1.1 Fresh fruit

	List
Apples	✓
Apricots	✓
Aromatic Herbs	
Avocados	✓
Bananas	✓
Berries	✓
Cherries	✓
Citrus Fruit	✓
Figs	✓
Grapes	✓
Guavas/Mangoes	✓
Kiwis	✓
Melons	✓
Nuts	
Peaches/Nectarines	✓
Pears	✓
Pineapples	✓
Plums	✓
Quinces	✓
Strawberries	✓
Watermelons	✓
Comments	<i>delivered in the school year</i>

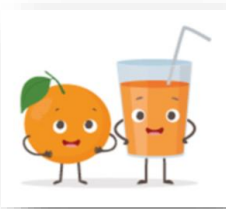


### 4.1.2 Fresh vegetables

	List
Artichokes	
Asparagus	
Aubergines	
Beet	✓
Broccoli	
Cabbages	
Carrots	✓
Cauliflowers	
Celery	
Chicory	
Courgettes	
Cucumbers	✓
Fennel	
Kohlrabi	✓
Kale	
Garlic	
Gherkins	✓
Leeks	
Lettuce	
Mushrooms	
Onions	
Parsnips	
Peas	
Peppers	✓
Pulses	
Pumpkins	✓
Radishes	✓
Rutabagas	
Salad beetroot	
Salsifis	
Spinach	
Tomatoes	✓
Turnips	✓
Comments	<i>delivered in the school year</i>

### 4.1.3 Processed fruit and vegetables

	List
Fruit Juices	
Fruit Purées/Compotes	
Jams/Marmalades	
Dried Fruits	
Vegetable Juices	
Vegetables Soups	
Other:	
Comments	



#### 4.1.4 Milk and milk products

	List
Drinking milk or lactose-free versions	✓
Cheese and curd	
Plain yoghurt	
Milk products without added sugar, flavouring, fruit, nuts or cocoa	
Milk products without fruit juice, naturally flavoured	
Milk products with fruit juice, naturally flavoured or non-flavoured	
Milk-based drinks with cocoa, with fruit juice or naturally flavoured	
Fermented or non-fermented milk products with fruit, naturally flavoured or non-flavoured	
Comments	



#### 4.1.5 Other agricultural products that children tasted as part of educational measures

	List
Table olives	
Olive oil	
Honey	
Other:	
Comments	



#### 4.1.a) Priorities for the choice of school fruit, vegetables and milk

	Yes/No	Comments
Local/regional purchasing	Yes	
Organic products	Yes	
Short supply chains	Yes	
Quality schemes	Yes	
Fair trade	No	
Other:	No	

#### 4.2 Average size of portion of school fruit, vegetables and milk (Kg/Lt)

	School fruit and vegetables	School milk
Kg	0,10	
Liters		0,25
Comments	Portion size are 80-120 grams	

#### 4.3 Average cost of portion of school fruit, vegetables and milk (EUR)

	School fruit and vegetables	School milk
EU aid	0,29	0,28
National aid (private/public)		
Comments	<i>Rounded value since each of the 139 lots has different portion prices; the average value is calculated on the total portions supplied and the total amount of aid (value = 0,285)</i>	<i>Aid for a maximum of 0,25 litres of milk per child and per delivery week. Average price calculated at 28 cents per portion (0,25 l)</i>

#### 4.3.a Average cost of portion of apples in bulk (EUR)

	Portion of apples in bulk
EU aid	
National aid (private/public)	
Comments	

#### 4.3.b Average cost of portion of drinking milk (EUR)

	Portion of drinking milk
EU aid	0,28
National aid (private/public)	0,28
Comments	

#### 4.4. Frequency of supply/distribution of school fruit, vegetables and milk

	School fruit and vegetables	School milk
Once per week	✓	✓
Twice per week		
Three times per week		
Four times per week		
Daily		
Other:		
Comments	<i>In social hotspots and special needs schools, school fruit and vegetables delivered twice per week</i>	



#### 4.5. Duration of supply/distribution of fruit, vegetables and milk

	School fruit and vegetables	School milk
≤ 2 weeks		
> 2 and ≤ 4 weeks		
> 4 and ≤ 12 weeks		
> 12 and ≤ 24 weeks		
> 24 and ≤ 36 weeks	✓	✓
Entire school year		
Other: please specify under comments		
Comments	28.08.2018-22-06-2018	

#### 4.6. Quantities of school fruit, vegetables and milk supplied/distributed and, if applicable, of other agricultural products that children tasted under educational measures

##### 4.6.1 Fresh fruit and vegetables

		Quantity	Comments
Fresh fruit and vegetables	Quantity in kg	1.025.261	Total 10252614 portions of fruit and vegetables. The weight was calculated on the basis of the portions delivered and the mean value of 100 grams per portion, as the portion weight is in the range of 80-120 grams
Of which: Fruit	Quantity in kg		
Of which: Vegetables	Quantity in kg		

##### 4.6.2 Processed fruit and vegetables

		Quantity	Comments
Processed fruit and vegetables	Quantity in kg		
	Quantity in litres		
Of which: Fruit juices	Quantity in litres		
Of which: Fruit purees/compotes	Quantity in kg		
Of which: Dried fruits	Quantity in kg		
Of which: Vegetable juices	Quantity in litres		
Of which: Vegetable soups	Quantity in litres		
Of which: Other	Quantity in kg		

##### 4.6.3 Milk and milk products

		Quantity	Comments
Drinking milk and lactose-free versions	Quantity in litres	643.526	Maximum amount of support not used as not everywhere deliveries took place weekly or more than once per week. Maximum amount of aid for 0,25 litres of milk per child and per delivery week; average price 28 cents per portion (0,25 l)
Cheese and curd	Quantity in kg		
Plain yoghurt	Quantity in kg		
Milk products without added sugar, flavouring, fruit, nuts or cocoa	Quantity in kg		
Milk products without fruit juice, naturally flavoured	Quantity in kg		
Milk products with fruit juice, naturally flavoured or non-flavoured	Quantity in kg		
Milk-based drinks with cocoa, with fruit juice or naturally flavoured	Quantity in litres		
Milk products with fruit, naturally flavoured or non-flavoured	Quantity in kg		

##### 4.6.4 Other agricultural products

		Quantity	Comments
Olive/olive oil	Quantity in kg		
	Quantity in litres		
Honey	Quantity in kg		
Others:	Quantity in kg		



### 5.1 Educational measures carried out

		Number of schoolchildren	Comments
Type of measure	School gardens	52.000	
	Visits to farms, dairies, famers' markets and similar activities	39.515	
	Tasting classes, cooking workshops, other	82.348	
	Lessons, lectures, workshops	122.175	
	Other activities: competitions, games, themed periods ...		

### 5.2 Theme(s) of the educational measures carried out

		Yes/No	Comments
Theme(s)	Reconnection of children to agriculture	No	
	Healthy eating habits	No	
	Local food chains	No	
	Organic	No	
	Sustainable production	No	
	Food waste	No	
	Other: please specify under comments	No	



## 6. Communication activities carried out

		Yes/No	Comments
Activity carried out/tool used	Poster at school premises	Yes	<i>The official EU school programme poster shall be clearly visible and legible, on a permanent basis, at the main entrance of the establishment.</i>
	Poster at other relevant places	No	
	Dedicated website(s)	No	
	Informative graphic material	No	
	Information and awareness campaign (TV, radio, social media)	No	
	Others (e.g. networking activities)	No	



## 7. Authorities and stakeholders involved

			Name	Involved in Planning	Involved in Implementation	Involved in Monitoring	Involved in Evaluation	How
Public authority/ Private stakeholder	Agriculture	Authority	MWLWW (Ministry of Economic Affairs, Transport, Agriculture and Viticulture)	Yes	Yes	Yes	Yes	Responsible for the (administrative) implementation of the support measure.
		Stakeholder	n/a	No	No	No	No	
	Health and Nutrition	Authority	MUEEF (Ministry for the Environment, Energy, Food and Forestry)	Yes	Yes	No	Yes	The Ministry of the Environment, Energy, Food and Forestry is responsible for the conceptual development of the programme and thus for preparing the strategy referred to in Article 23 (8) of Regulation (EU) No 1308/2013. This includes responsibility for carrying out the evaluation.
		Stakeholder	n/a	No	No	No	No	
	Education	Authority	Ministerium für Bildung (Ministry of Education)	Yes	Yes	No	No	Involved in the planning and implementation of the accompanying educational measures
		Stakeholder	n/a	No	No	No	No	
	Other	Authority	n/a	No	No	No	No	
		Stakeholder	Verbraucherberatungen und sonstige Bildungs- und Beratungseinrichtungen (Consumer advice and other educational and advisory services)	Yes	No	No	No	Nutritional support as accompanying measures under the EU school scheme: learning on the farm, with agricultural operators; Food and Nutrition Experts in 'ABC der Lebensmittel', Networking Office for School Food, with the implementation of the nationwide days of food and school meals; learning content around milk for nurseries and schools.