



European
Commission

Civil Dialogue Group

Arable Crops

28th April 2015

RICE MARKET

*DG Agriculture and Rural Development
European Commission
AGRI/C/4*



Agriculture
and Rural
Development

CONTENTS

1. World Rice Market

2. EU Rice Market

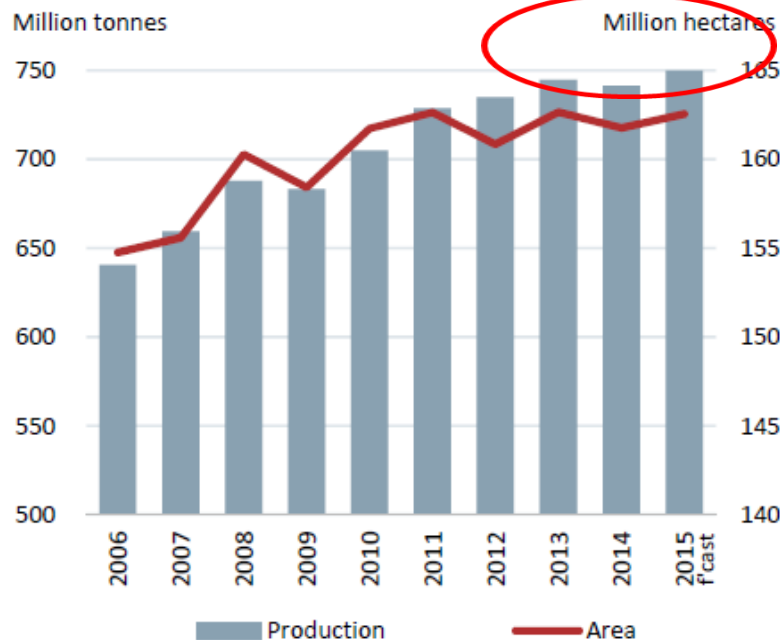
- EU Rice Demand
- EU Rice Supply
- EU Rice Prices

1. World Rice Market

World Rice Market 2014: high supply and high demand

(Source FAO Rice Market Monitor April 2015)

Global Rice Paddy Production and Area



GLOBAL RICE MARKET SUMMARY

	2012-13	2013-14	2014-15	2014-15/ 2013-14
		est.	f'cast	Var
	million tonnes, milled eq			%
Production	490.1	496.6	494.4	-0.5
Supply	690.6	714.6	717.4	0.4
Utilization	476.4	491.2	499.4	1.7
Food use	401.2	409.2	414.6	1.3
Feed use	13.3	14.0	14.4	2.8
Other uses	62.0	68.0	70.3	3.4
Trade ^{1/}	37.2	42.4	41.3	-2.5
Ending stocks ^{2/}	176.7	181.0	176.6	-2.4

World Rice Market Forecast: high supply and high demand to stay

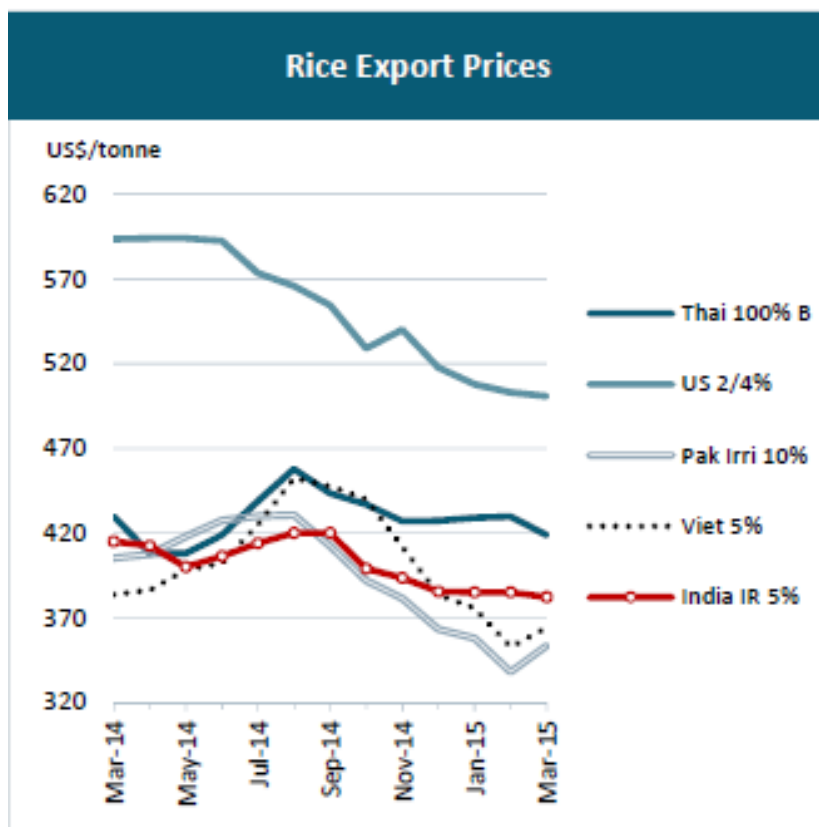
(Source: International Grains Council IGC)

Rice: Medium term supply and demand summary

	13/14	14/15	15/16	16/17	17/18	18/19	19/20	y/y change		
	est.	f'cast	proj.	proj.	proj.	proj.	proj.	previous five year average*	15/16	average 16/17- 19/20
Yield (t/ha)	3.0	3.0	3.0	3.0	3.0	3.1	3.1	1.0%	1.0%	0.8%
Area (m ha)	160	161	161	162	162	162	162	0.6%	0.3%	0.2%
Production (m t)	476	476	482	487	492	497	501	1.6%	1.3%	1.0%
Consumption (m t)	477	481	486	490	494	497	500	1.9%	0.9%	0.7%
Trade (Jan/Dec, m t)	40	41	41	42	43	43	44	5.5%	0.6%	2.0%
Stocks (m t)	109	103	100	97	95	94	95
y/y change	- 1	- 5	- 3	- 3	- 2	- 1	+ 1
major exporters**	39	34	30	28	26	25	24

Notes: *2009/10-2014/15, ** India, Pakistan, Thailand, US, Vietnam. Figures for production, consumption, trade and stocks are milled basis.

World market prices: downward trend (US \$/tonne, milled, FoB)



FAO Rice Price Indices						
	All	Indica		Japonica	Aromatic	
		Higher quality	Lower quality			
	2002-2004 = 100					
2011	242	232	250	258	220	
2012	231	225	241	235	222	
2013	233	219	226	230	268	
2014	235	207	201	266	255	
2014	March	238	207	199	270	264
	April	237	205	198	268	264
	May	235	207	199	262	264
	June	236	209	202	263	265
	July	239	212	206	265	265
	August	242	215	213	263	271
	September	239	207	208	265	272
	October	235	203	204	260	268
	November	233	199	200	289	211
	December	224	195	191	283	187
2015	January	222	194	189	279	189
	February	220	189	186	276	196
	March	219	189	187	272	195
2014	Jan.-Mar.	234	210	198	257	263
2015	Jan.-Mar.	220	191	187	276	193
% Change		-5.8	-9.2	-5.4	7.0	-26.6

2. EU Rice Market

- EU Rice Supply
- EU Rice Demand
- EU Rice Prices

EU Rice Balance Sheet (March 2015)

	2010/11			2011/12			2012/13			2013/14			2014/15 est		
	Japonica	Indica	TOTAL	Japonica	Indica	TOTAL	Japonica	Indica	TOTAL	Japonica	Indica	TOTAL	Japonica	Indica	TOTAL
Beginning stocks															
<i>Private</i>	226	277	503	197	274	471	237	257	494	285	255	540	191	281	471
<i>Intervention</i>	-	-	-	-	-	-	-	-	-	-	-	-	-	-	-
Total beginning stocks	226	277	503	197	274	471	237	257	494	285	255	540	191	281	471
Usable production	1,125	723	1,847	1,180	705	1,885	1,205	685	1,890	1,077	693	1,770	1,089	548	1,637
<i>Area ('000 ha)</i>	306	171	477	320	158	478	321	146	467	280	146	425	290	124	414
<i>Agronomic yield (t/ha, on paddy basis)</i>	6.2	7.1	6.5	6.2	7.5	6.6	6.5	7.8	6.9	6.4	7.8	6.9	6.3	7.3	6.6
<i>Milling yield (%)</i>	59%	60%	59%	59%	60%	59%	57%	61%	58%	60%	61%	61%	60%	61%	60%
Imports (from third countries)	69	911	980	76	793	869	81	856	937	92	967	1,059	90	1,050	1,140
TOTAL SUPPLY	1,420	1,910	3,330	1,452	1,772	3,224	1,523	1,798	3,321	1,454	1,915	3,369	1,370	1,878	3,249
Domestic uses															
<i>Human consumption / Industrial uses / Animal feed</i>	1,008	1,584	2,592	1,031	1,472	2,503	1,069	1,503	2,573	1,046	1,583	2,629	973	1,579	2,553
<i>Seed ***</i>	32	19	51	36	21	57	36	19	55	34	22	56	37	19	56
Total domestic uses	1,039	1,604	2,643	1,067	1,493	2,560	1,106	1,522	2,628	1,079	1,605	2,685	1,010	1,598	2,609
Exports (to third countries)	183	33	217	148	22	170	133	21	153	183	29	212	229	30	250
TOTAL USE	1,223	1,637	2,860	1,215	1,515	2,730	1,238	1,542	2,781	1,263	1,635	2,897	1,230	1,628	2,859
Final stocks ****															
<i>Private</i>	197	274	471	237	257	494	285	255	540	191	281	471	140	250	390
<i>Intervention</i>	-	-	-	-	-	-	-	-	-	-	-	-	-	-	-
Total final stocks	197	274	471	237	257	494	285	255	540	191	281	471	140	250	390
Change in stocks	-29	-3	-33	40	-17	23	48	-1	46	-94	25	-69	-51	-31	-81
Change in public stocks	-	-	-	-	-	-	-	-	-	-	-	-	-	-	-

2013/14 closed, 2014/15 still estimated (stocks and uses) - see details @ http://ec.europa.eu/agriculture/cereals/balance-sheets/index_en.htm

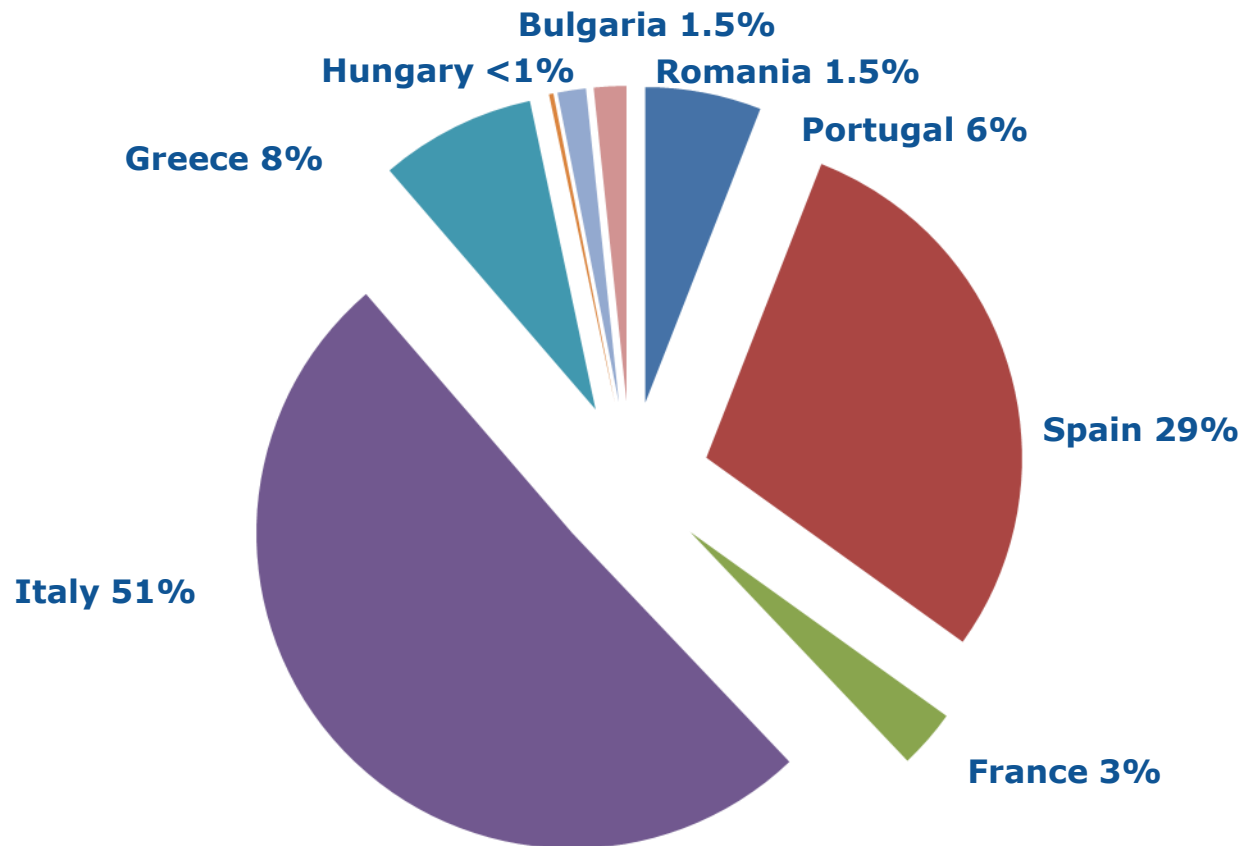
EU Rice Supply

	2012/13			2013/14			2014/15 fc		
	Jap.	Ind.	TOTAL	Jap.	Ind.	TOTAL	Jap.	Ind.	TOTAL
Beginning stocks	237	257	494	285	255	540	182	273	455
Production *	1,205	685	1,890	1,077	693	1,770	1,089	548	1,637
% Japonica vs Indica	64%	36%		61%	39%		67%	33%	
Area ('000 ha)	321	146	467	280	146	425	290	124	414
Imports	81	856	937	92	967	1,059	90	1,050	1,140
TOTAL SUPPLY	1,523	1,798	3,321	1,454	1,915	3,369	1,361	1,871	3,232

* ALL VOLUMES IN MILLED EQ.

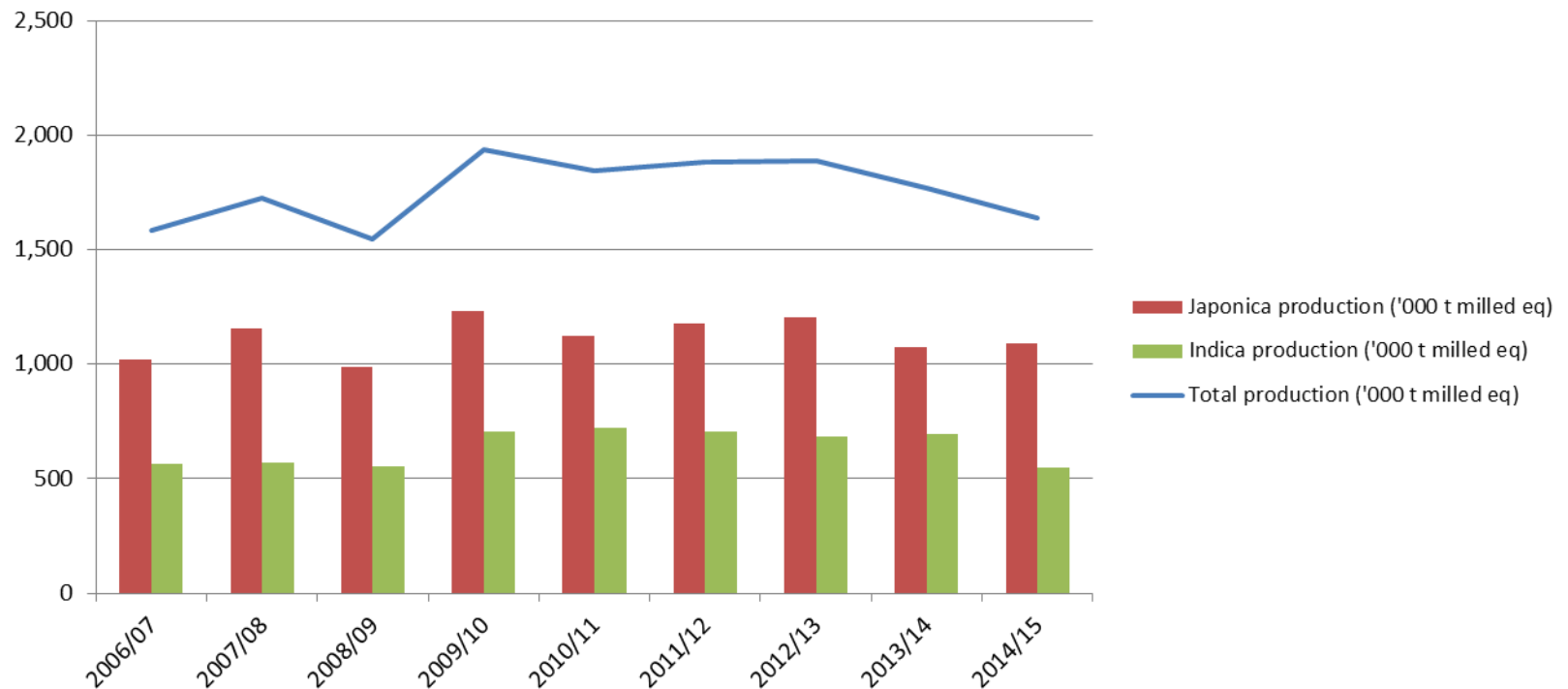
Stable Japonica production
Lower Indica production
Higher Imports
Same trends expected in 2015

EU Rice Production / Member State



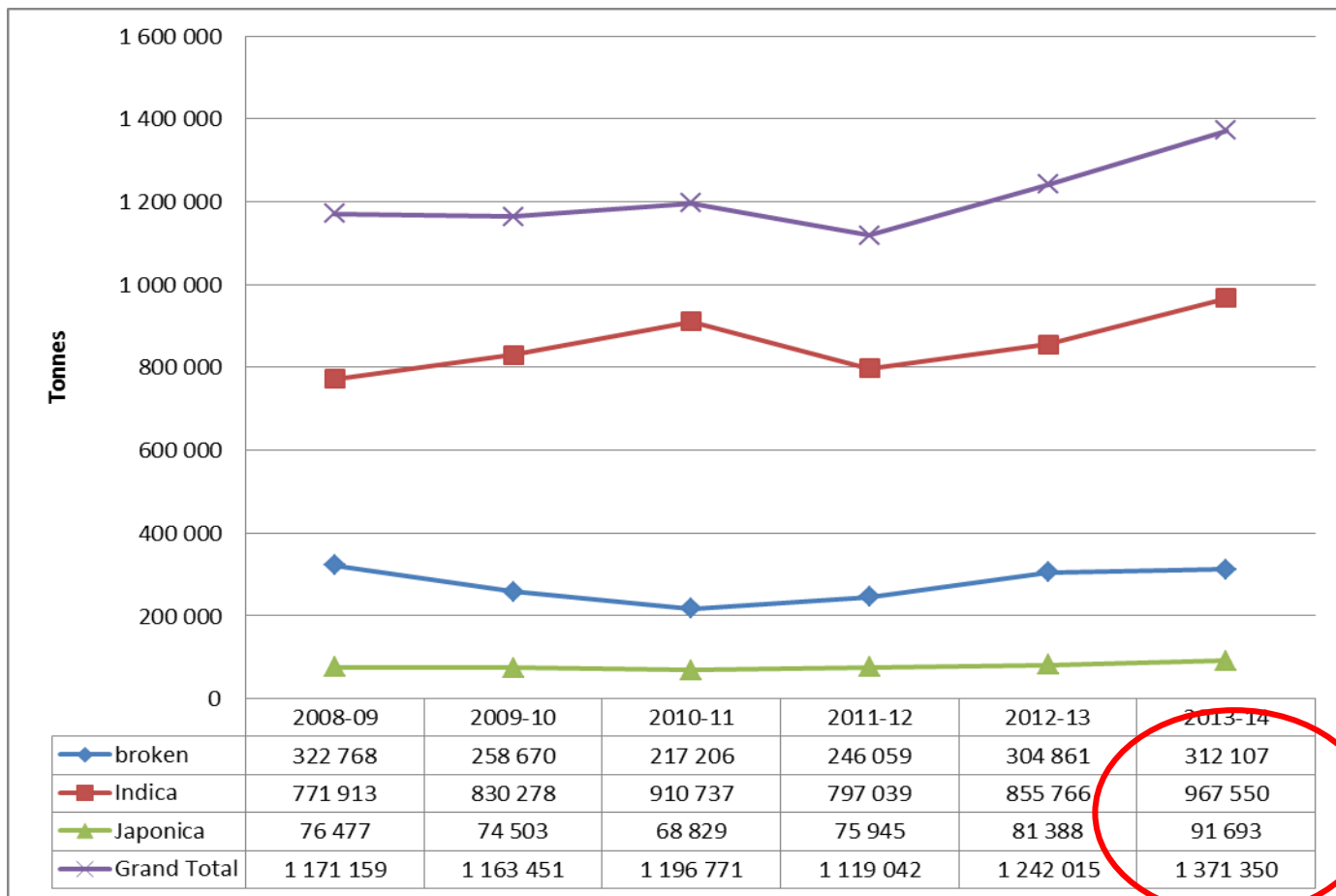
Total EU Paddy Rice Production 2014/15:
2,728 Million tonnes
(1,637 Million tonnes in milled eq.)

EU Japonica and Indica Production



<i>Japonica %</i>	65%	67%	64%	64%	61%	63%	64%	61%	67%
--------------------------	------------	------------	------------	------------	------------	------------	------------	------------	------------

Total EU Rice Imports:
approx. 1 Mio. Tonnes (milled eq.), mainly Indica
+ 300 000 tonnes of broken



EU Rice Demand

	2011/12			2012/13			2013/14		
	Jap.	Ind.	TOTAL	Jap.	Ind.	TOTAL	Jap.	Ind.	TOTAL
Domestic uses	1067	1493	2560	1106	1522	2628	1079	1605	2685
Exports	148	22	170	133	21	153	183	29	212
TOTAL USE	1215	1515	2730	1238	1542	2781	1263	1635	2897
Final stocks	237	257	494	285	255	540	191	281	471

Strong demand, both for domestic uses and exports

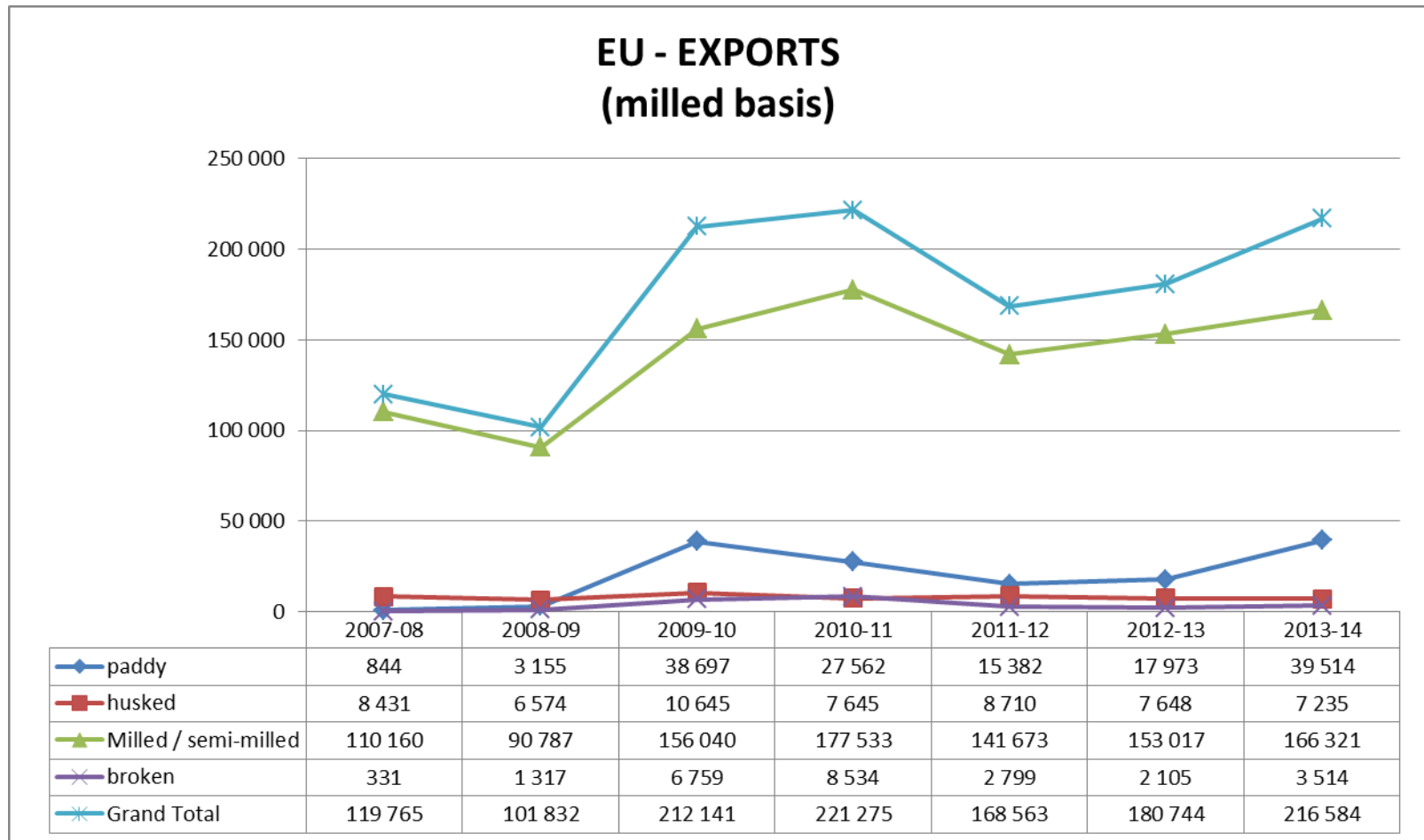
Final Stocks: - 13% in 2013/14

Total EU Rice Use : + 4.5% in 2013/14

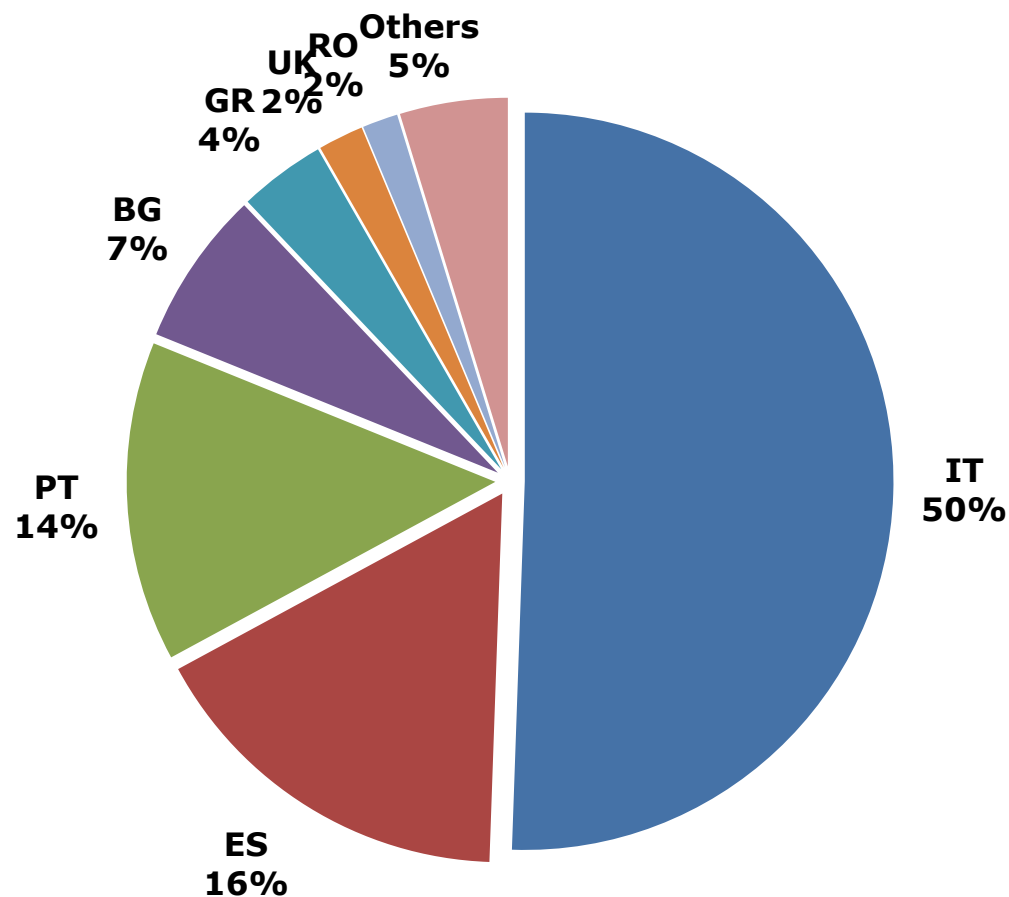
(incl. + 38% in EU Rice Exports)

Same trends expected in 2015

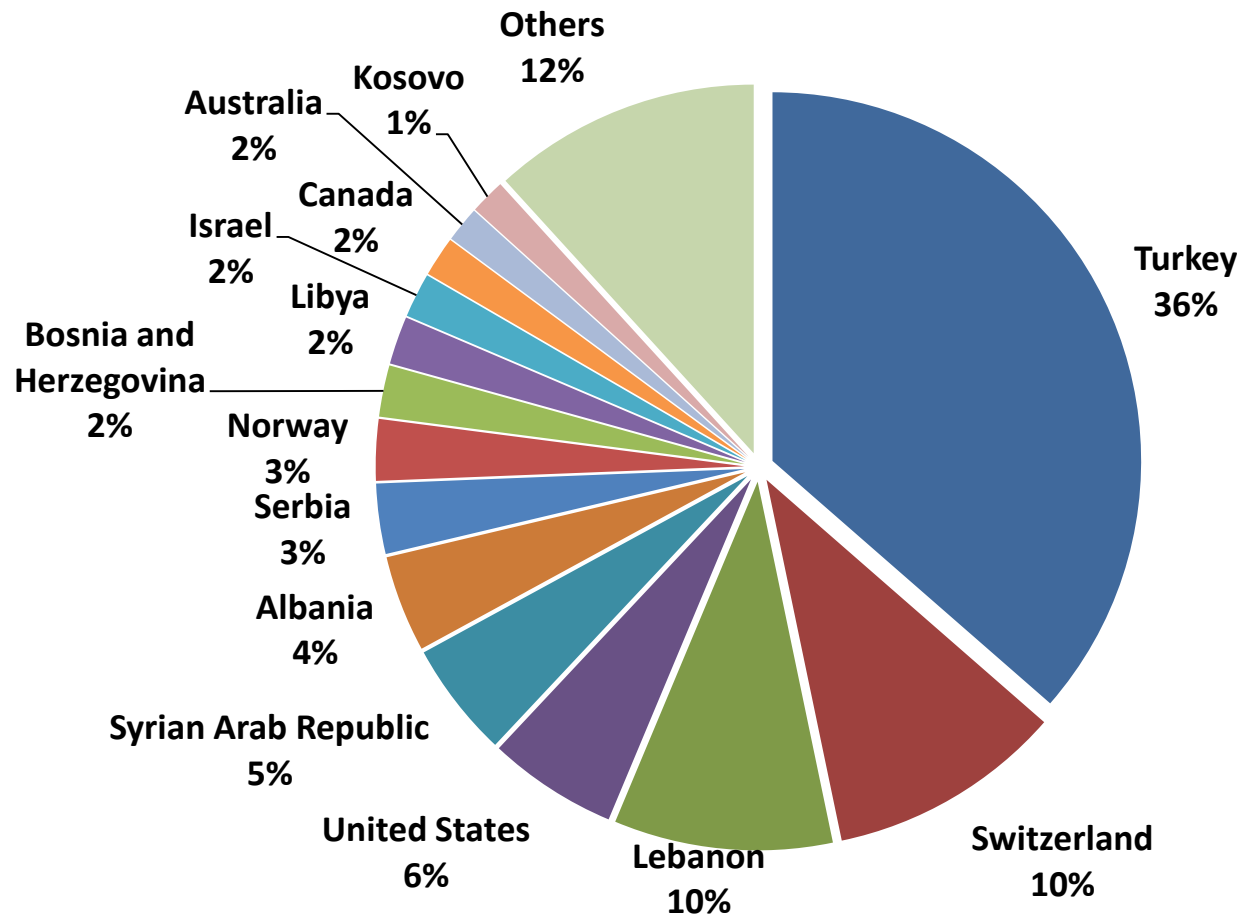
EU Rice Exports: increasing since 2011/12



EU Rice 2013/14 Exports (216 584 tonnes) : origin



EU Rice 2013/14 Exports (216 584 tonnes) : destinations

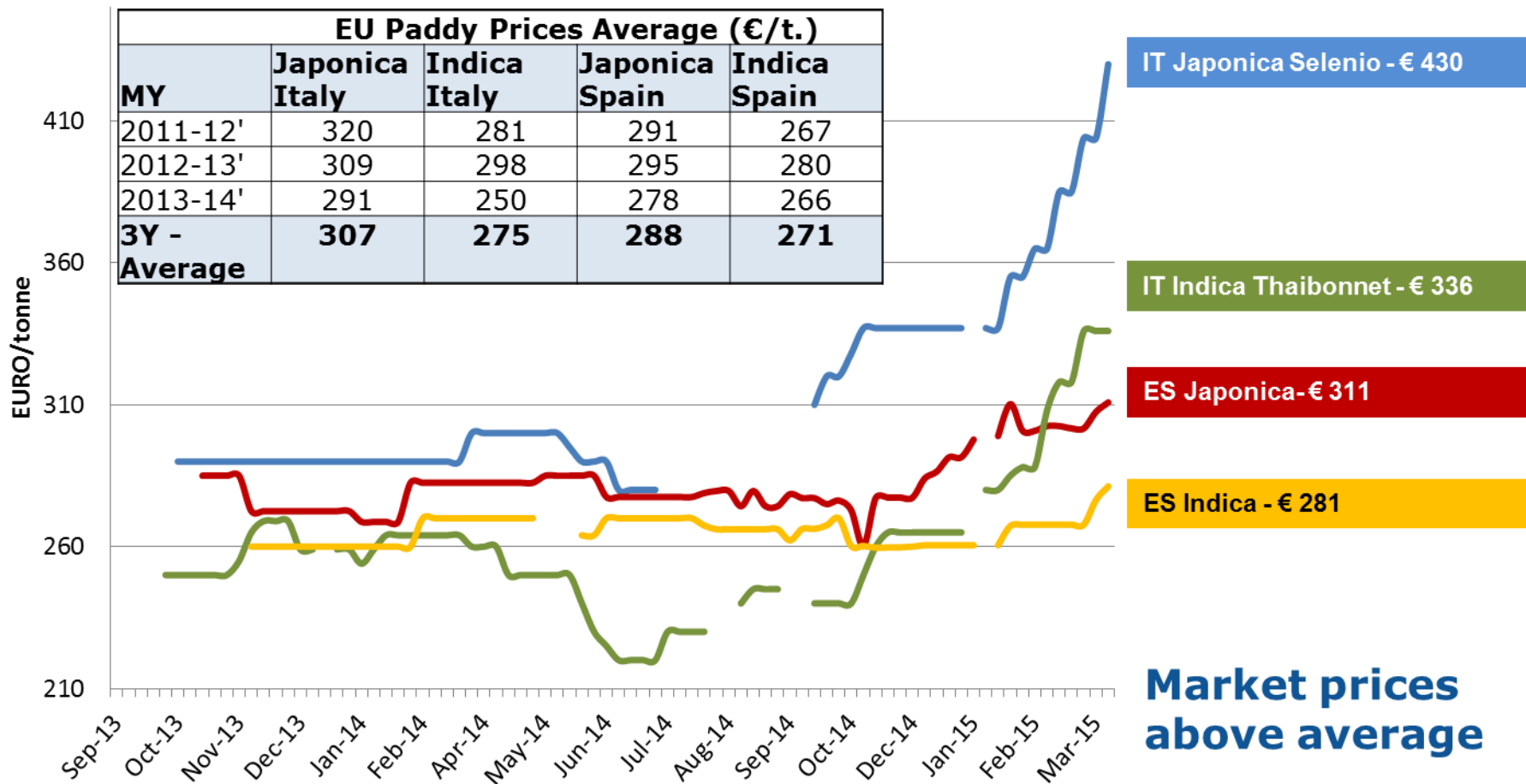


EU Rice Exports : still increasing in 2014/15

(export licences requested as mid-April)

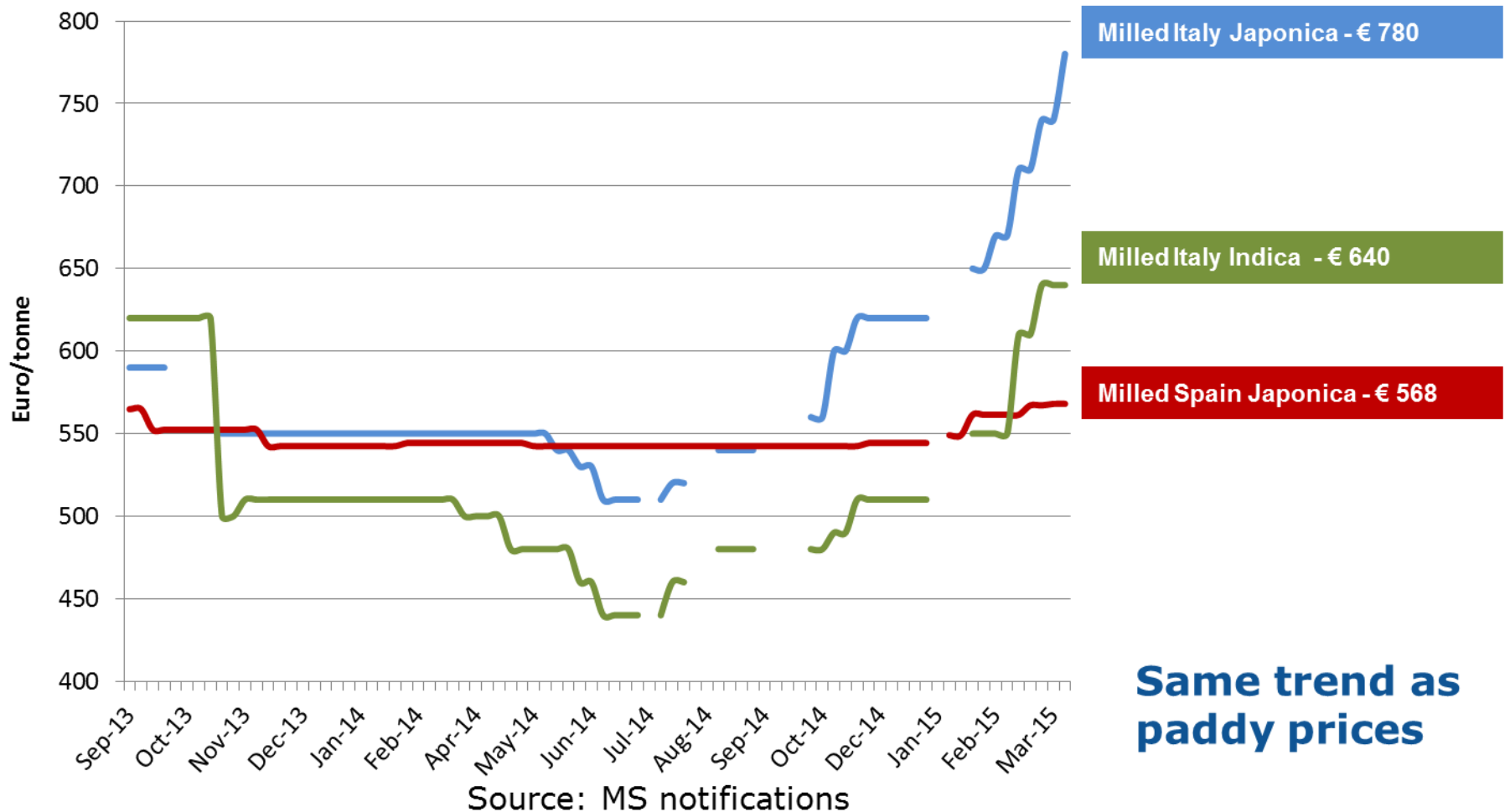
	2014/15 (until 21/04/15)	2013/14 (until 22/04/14)	2014/15 vs 2013/14
Husked	12348	6849	+ 80%
Japonica	11045	5490	
Indica	1303	1359	
Semi-milled	451	500	- 1%
Japonica	397	408	
Indica	54	92	
Milled	162412	129430	+ 25%
Japonica	140199	107704	
Indica	22213	21726	
Total (milled eq.)	171446	134712	+ 27%
Japonica	148282	111962	+ 32%
Indica	23164	22750	+ 1%

EU Paddy Rice Prices: Strong increase over last 6 months



Source: MS notifications

EU Milled Rice Prices



Key Messages

- **Global Market: prices decrease** (high supply, large stocks)
- **EU Trade: increase of EU rice imports and exports** (slight increase for imports, strong increase for exports)
- **EU Market: tight supply/demand** and **strong prices on EU rice market** (both for Japonica and Indica), prices above average levels

The background of the slide is a vibrant, high-resolution photograph of a rural landscape. It shows a lush green field in the foreground, with a dense line of trees in the middle ground. The sky is a deep, dramatic blue with some lighter clouds, suggesting a late afternoon or early morning setting. The overall mood is peaceful and natural.

Thank you for your attention!

Market presentation available:

http://ec.europa.eu/agriculture/cereals/presentations/index_en.htm