



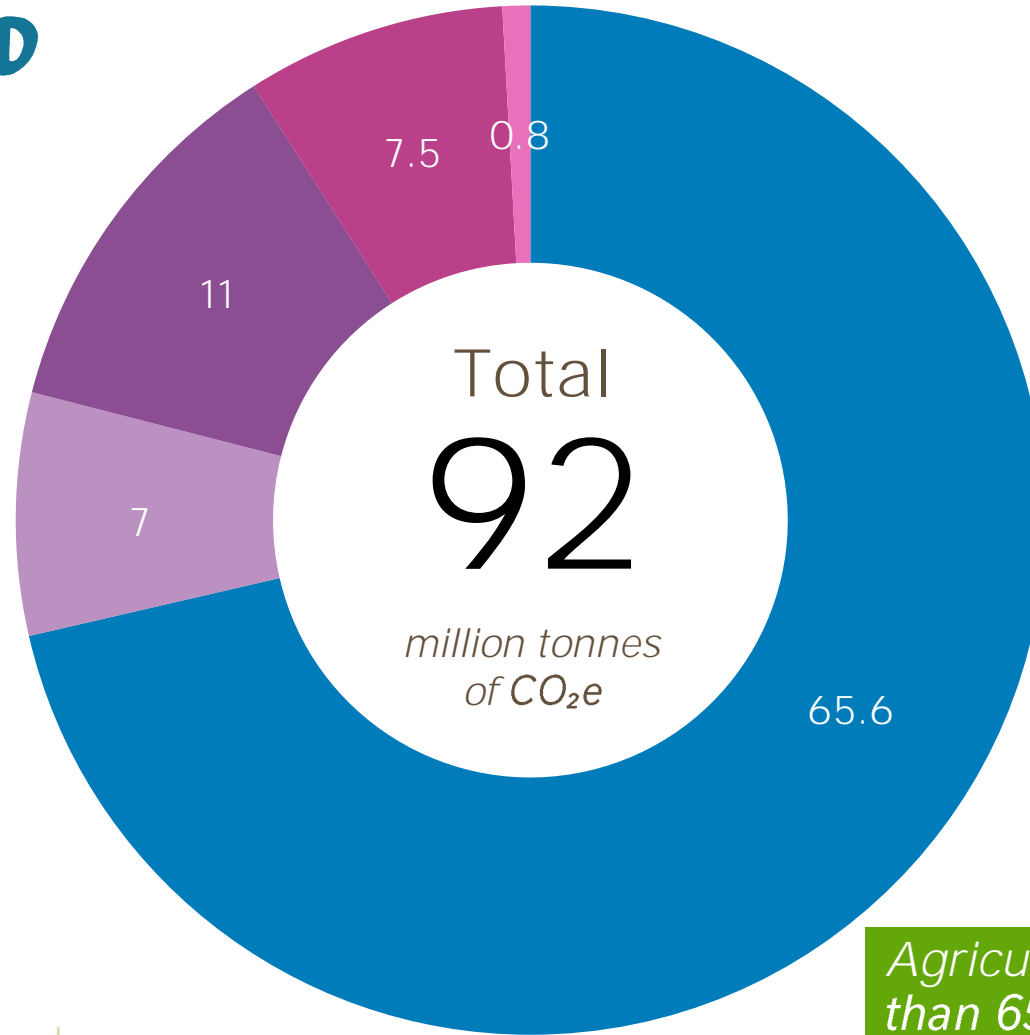
Nestlé Good food, Good life

NESTLÉ'S NET ZERO ROADMAP **ACCELERATE, TRANSFORM, REGENERATE**



EMISSIONS COVERED BY OUR PLEDGE

Million tonnes of CO₂e, in 2018



Scope 3		
Sourcing our ingredients	65.6	58%
Dairy and livestock	34.2	
Soil and forests	25.0	
Other	6.4	
Scope 1,2 & 3		
Manufacturing our products	7.0	6%
Scope 3		
Packaging our products	11.0	10%
Scope 3		
Managing logistics	7.5	7%
Scope 3		
Travel & employee commuting	0.8	1%



Agriculture commodities account for more than 65.6% of Nestlé carbon footprint... Without fixing our upstream supply chain we will not deliver on our commitments - neutrality by 2050

OUR FOCUS ON AGRICULTURE – IMPROVE SOIL HEALTH AND RESTORE BIODIVERSITY



Regenerative agricultural practices

14 million tons of ingredients by 2030



Reforestation program

200 million trees by 2030

LEGISLATION TO ENABLE THE TRANSITION – TECHNICAL & FINANCIAL SUPPORT TO FARMERS

Create a tangible Future

Pilot Close gaps with R&D - innovate Train, Teach, Promote



Create a conducive environment

Agricultural Policies Debottleneck restrictions Onboard society - acceptance



Scale

Access to capital Startups leveraging innovation Reward transformation



SAI Platform

Sustainable agriculture for
a better world

Robert Erhard
SAI Platform President
December 2020

Connecting, collaborating, and building



**Building industry
solutions**



Theme leadership



Collaborative action

Our members



Affiliate members



*In SAI Platform statutes: 'Active members'

SAI Platform participating groups

The Dairy Working Group



A pre-competitive and trustworthy cooperation between dairy buyers and processors on sustainability



Our focus is to drive development and push the sustainability agenda



Represent

30%

of the dairy traded volumes

Building the **Sustainable Dairy Partnership**, an example of the industry collaborating together and developing an overarching solution to common challenges.

Collaborative Industry approach in building a common model

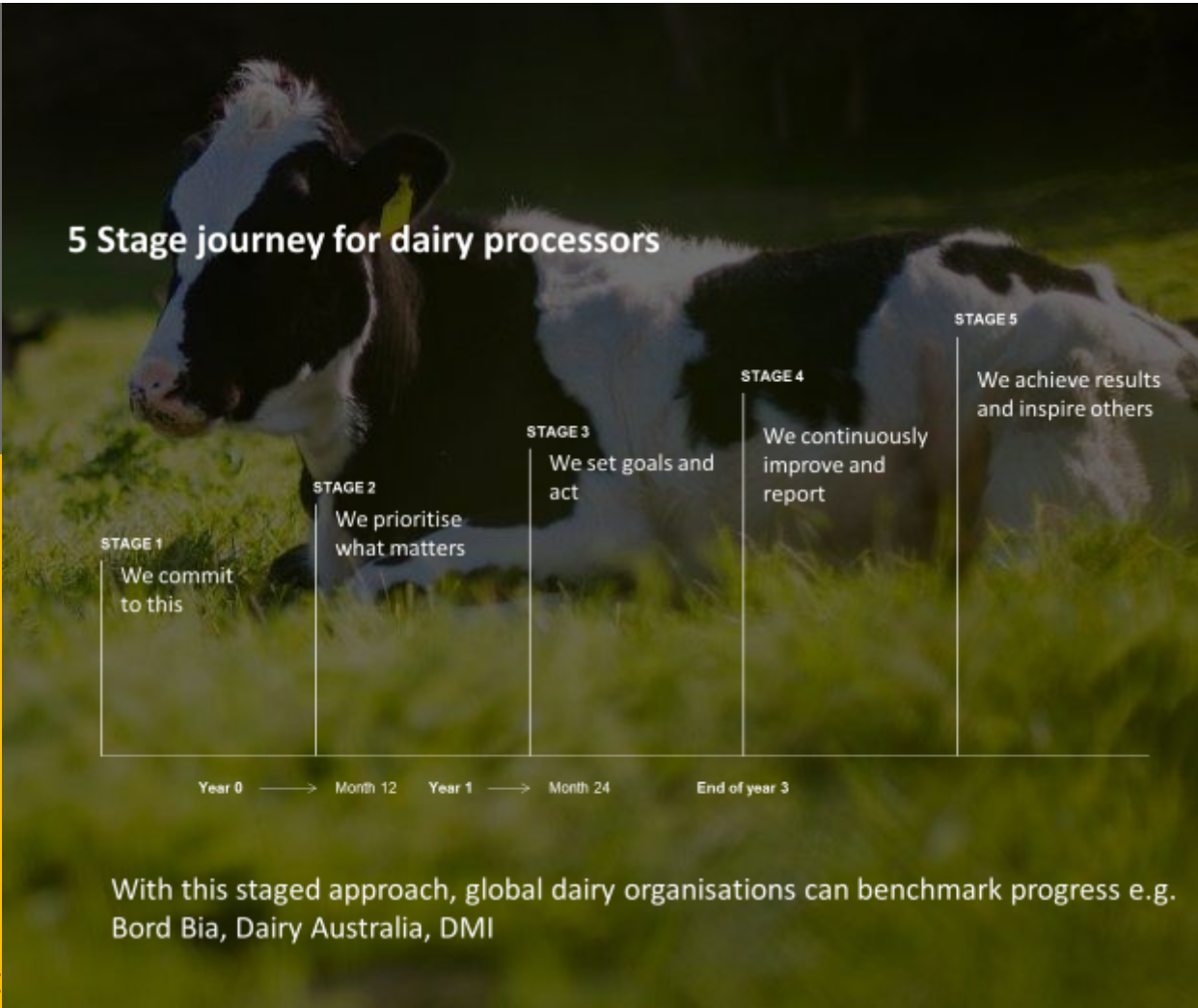


GLOBAL DAIRY PLATFORM



Dairy Sustainability Framework

- Greenhouse Gas Emissions (CO₂ icon)
- Soil (shovel icon)
- Working Conditions (checkmark icon)
- Soil Nutrients (plant icon)
- Biodiversity (leaves icon)
- Water (water drop icon)
- Product Safety & Quality (thumbs up icon)
- Animal Care (cow icon)
- Rural Economies (house and tree icon)
- Waste (recycling icon)
- Market Development (zigzag icon)

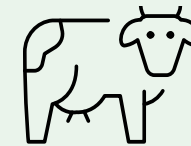


The European Roundtable for Beef Sustainability

The ERBS is a multi-stakeholder roundtable to address the sustainability challenges of the European beef industry.

ERBS mission

All aspects of the beef value chain are recognised for delivering measurable positive impacts and continuous improvement towards key sustainability priorities



Animal welfare and health



Greenhouse Gas



Animal medicines



Farm management



The beef communities are globally linked



- Current roundtables & initiatives
- No roundtable structure
- Newest development



United Kingdom

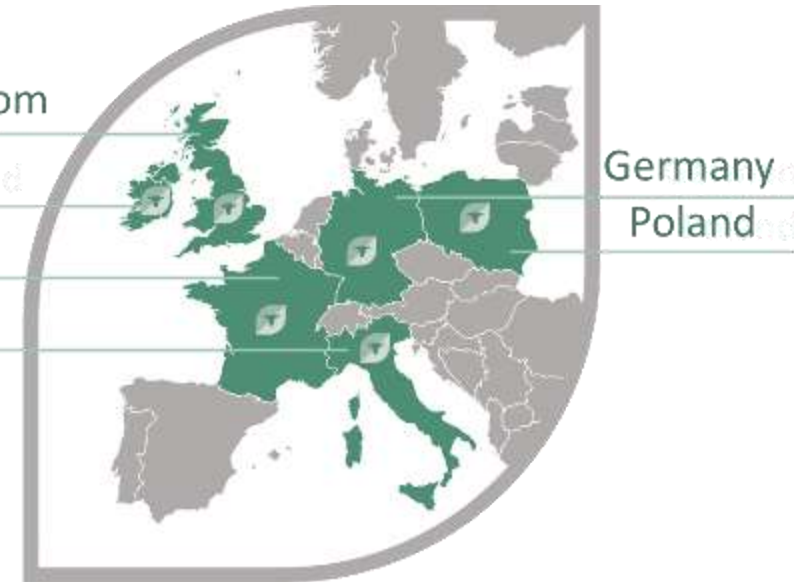
Ireland of Ireland

France

Italy

Germany

Poland



A landscape photograph of a field with a dark green brushstroke overlay. The text is centered on the brushstroke.

Call for strong collaboration between
Policy makers + Industries + Farmers