

**Commission proposal for  
a Regulation on the protection of  
animals during transport  
with a focus on small ruminants**



# Why now?

- **Council Regulation 1/2005 is almost 20 years and remains unchanged**
- **The scientific and technological progress evolved a lot**
- **Challenges with the implementation – i.e. export to third countries, different interpretation etc.**
- **Need for more sustainable food production identified under the EU Farm to Fork Strategy**
- **Need to improve animal welfare during transport**

# The process to prepare the proposal

- Evaluation of the current legislation (Fitness Check)
- EFSA scientific opinions on animal welfare during transport
- Wide public consultation on the policy options
- Meetings with all stakeholders involved
- External Study supporting the Impact Assessment
- Economic modelling done by JRC
- Dedicated sub-group on animal transport under the EU Platform on AW
- Commission Staff Working Document on the Impact Assessment
- [https://food.ec.europa.eu/animals/animal-welfare/animal-welfare-practice/animal-welfare-during-transport\\_en](https://food.ec.europa.eu/animals/animal-welfare/animal-welfare-practice/animal-welfare-during-transport_en)

# Our objectives

## General objectives:

- Sustainable agricultural and food production;
- Latest scientific and technological advances;
- Simple and clear rules – easy to enforce;
- Higher level of protection of animals;
- High societal demands;
- Smooth functioning of the internal market.

## Specific objectives:

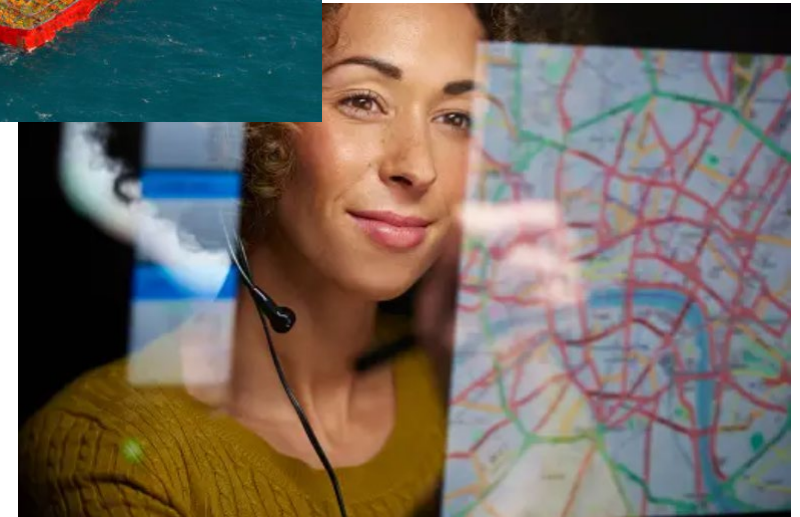
- Limited journey times;
- Increased space allowance;
- Improved transport of vulnerable animals;
- Better protection from extreme temperatures;
- Wider digitalisation and improved traceability;
- Stricter requirements for export;
- Strengthens official controls.

# What is covered?

- Focusing mostly on most commonly transported animal species;
- Addition of provisions on **aquatic animals** and **dogs and cats**;
- Three layers of regulation
  - **Included with detailed provisions** (farm animals, aquatic animals, cats and dogs...)
  - **Included with general provisions** (transhumance, 50km radius, animals for the purposes of participating in training, exhibitions, competitions, cultural events, circuses, and equestrian sport and leisure activities)
  - **Excluded** (CITES, zoos, vet practice, no economic activity, ornamental fish, direct deliveries of aquatic animals to food businesses supplying the final consumer)
- Derogations (animals in scientific projects)

# Digitalisation and traceability

- Journey log fully digitalised
- All documents will be digital and in TRACES to
- Mobile application will be created to facilitate administrative tasks on route
- Positioning of means of transport



# Journey times



## New simplified approach

Short journeys - 9 h (to slaughterhouse max 9 h, derogation upon decision of CA)

Long journeys – 21 h + 24 h rest + 21 h

Transport of unweaned animals - 8 h (without feeding) and 19 h (with feeding)

Transport of poultry and rabbits - 12 h (incl. loading and unloading)

Transport at extreme temperatures

Journeys including transport by sea (livestock and ro-ro vessels)



# Transport of unweaned animals



## Journey time:

- Without feeding system: 8h
- With feeding system is installed and used: 9h-1h-9h

Animals must be fed every 9 h

Time spent at sea does not count as journey time

Approval of feeding system



# Increased space allowance

- Uniform for all means of transport
- Calculated using allometric equation

$$A = kW^{(2/3)}$$

A=area per animal [m<sup>2</sup> or cm<sup>2</sup> for transport of birds and rabbits in containers], W=live weight [kg], k= “k-value”

- **Species-specific (k-value for poultry is 290);**

# Transport in extreme temperatures

Journey times depend on temperature forecast at departure, destination, control post and exit point or BCP

- **Cold:**

- $< 0^{\circ}\text{C}$ : **Protection from windchill**
- $< -5^{\circ}\text{C}$ : **Protection from windchill and journey time max 9h**

- **Heat:**

- $25\text{-}30^{\circ}\text{C}$ : **Journey between 10am and 9pm limited to 9h**
- $>30^{\circ}\text{C}$ : **Only journeys between 9pm and 10am allowed**
- $>30^{\circ}\text{C}$  by night: **Only journeys between 9pm and 10am allowed and 20% more space allowance**



# Transport by sea



**Paris Memorandum of Understanding on Port State Control**

Only vessels flying white or gray flag according to flag performance rating



**Official veterinarian on board of the first journey**



**Animals to be loaded only to vessels with ship risk profile as “low risk” or “standard risk”**



**Acceptance of documentation from TC authorities**

Attestation

Prerequisite for approval of journey log if animals are to be transported by sea

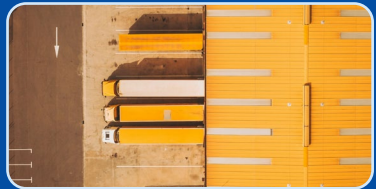
# Export and import



## **Export to third countries:**

EU rules must be respected until the place of destination in the third country.

- Organisers to be authorised for transports to TC
- Checks in TC to be performed by certification bodies;
- Control posts in TC to be approved;



## **Import from third countries:**

EU rules or equivalent must be respected until the place of destination in the EU.



## **Transit through the EU:**

EU rules apply except provisions on journey times

# More harmonised approach on sanctions

A new approach

- Better defined aggravating circumstances
- List of 'Serious infringements'
- Administrative financial penalty expressed according to the value of the consignment
- List of 'Other measures'

# Procedural provisions

- Commission shall publish a monitoring report:
  - after 5 years, based on TRACES data and MS info
- Amendment of Annexes
  - Delegated acts to update technical rules in Annex I, Chapter I, II, V and VII and Annex II
  - Implementing acts to update template (i.e. journey logs in Annex III and attestations in Annex IV)
  - 5 years period and Committee Procedure



# Other provisions



- Stricter national measures at departure are allowed only on the territory of the MS concerned or for direct export
- Mobile application developed by the Commission (5 years after adoption)
- Reporting and evaluation of this Regulation (10 years after adoption)
- Derogation for MS with outermost regions (under certain conditions)



# Transitional and final provisions

- Entry into force – it shall apply 2 years from the date of entry into force
- 3 years transition for:
  - sanctions: serious infringements and other not related to poultry;
- 5 years transition for:
  - Means of transport by road equipped with position system
  - Data protection
  - Journey times requirements
  - Import and export requirements
  - Space allowances



# Feedback

- Commission's Portal « **Have your say** »:
- [https://ec.europa.eu/info/law/better-regulation/have-your-say/initiatives/13613-Animal-welfare-protection-of-animals-during-transport\\_en?\\_jtsuid=56965170662130660138454](https://ec.europa.eu/info/law/better-regulation/have-your-say/initiatives/13613-Animal-welfare-protection-of-animals-during-transport_en?_jtsuid=56965170662130660138454)
- Feedback was open until 12 April.
- More than 5000 contributions received
- Analysis is ongoing

**Thank you for your attention!**