



Xylella fastidiosa

- State of play -

MEETING OF THE «CDG HOS – OLIVES SECTOR»

13 November 2020

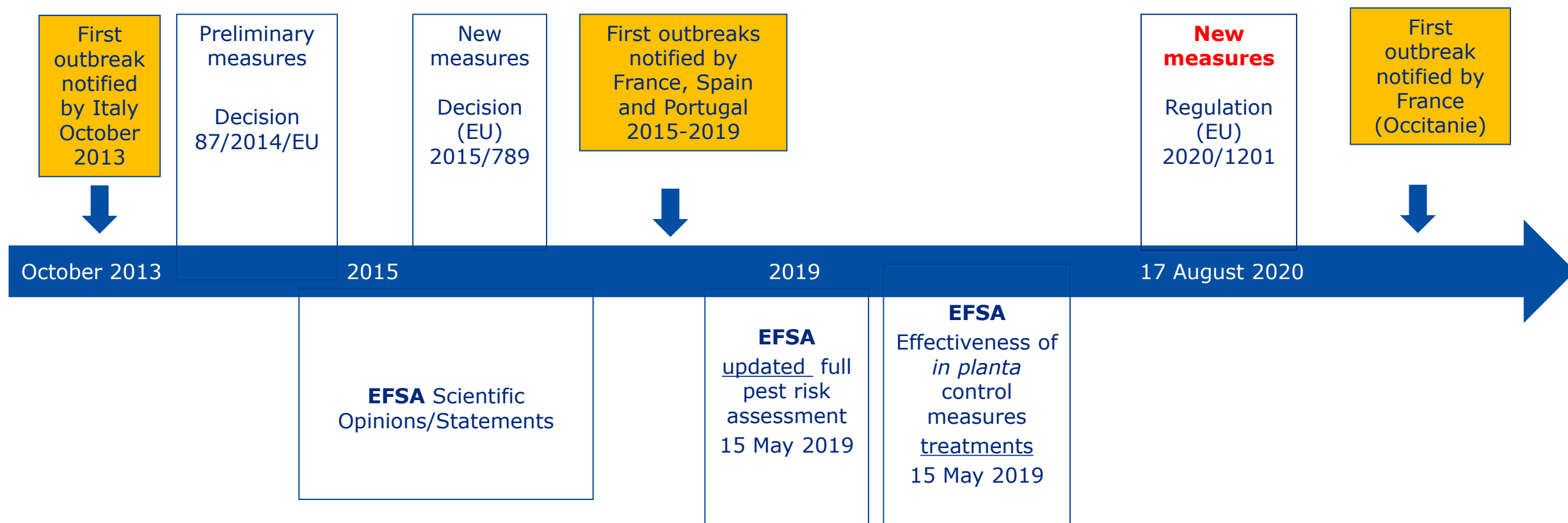
*Unit G1, Plant Health
DG Health and Food Safety*

Overview

1. Regulatory updates

2. EU outbreak situation

EU measures hand in hand with scientific developments



Regulation (EU) 2020/1201* in force since 17 August 2020:

WHAT'S NEW?

(*) NOTE: the presentation is only focused on the major changes. For a full assessment of the new legislation, please consult the legislation online

<https://eur-lex.europa.eu/legal-content/EN/TXT/?uri=CELEX:32020R1201>

MEASURES APPLICABLE TO ALL MEMBER STATES

1. Contingency plans

- Rules detailing identification of owners, notification of felling orders, access to private properties
- Minimum resources to be made available and how to make them available in case of confirmed/suspected case

2. Annual survey activities

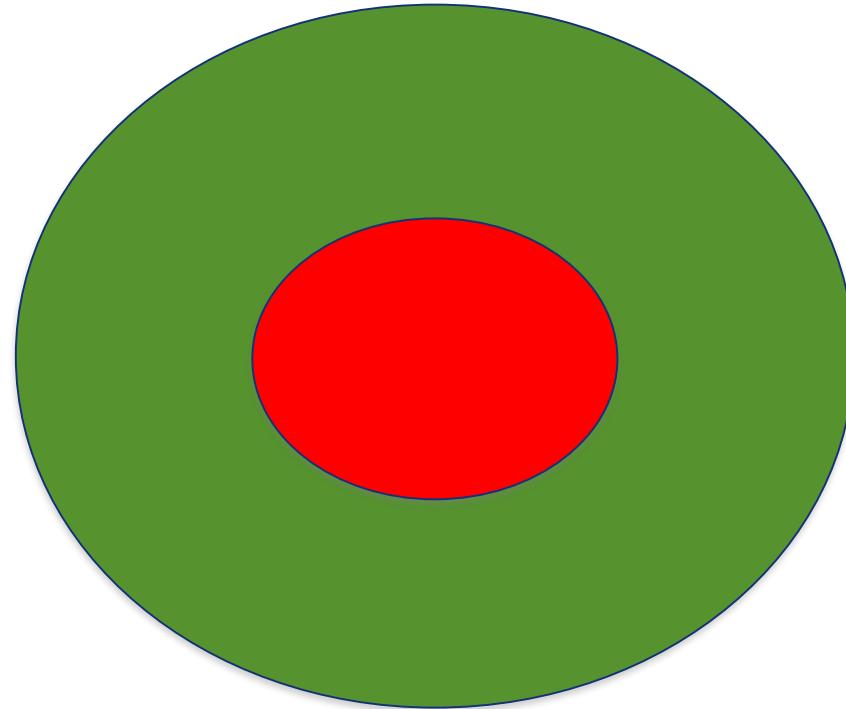
- From January 2023 - EFSA Guidelines for statistically sound and risk-based surveys
- Molecular tests listed in Annex IV (no derogation for nurseries outside demarcated areas)

DEMARCATED AREA

BUFFER ZONE

- 1 km Isolated case
- 2,5 km Eradication
- 5 km Containment

INFECTED ZONE



Demarcated Areas established in the EU

- **FRANCE**

- Corsica – containment (*multiplex*)
- PACA – eradication (*multiplex and pauca*)
- Occitanie – eradication (*multiplex*)

- **PORTUGAL**

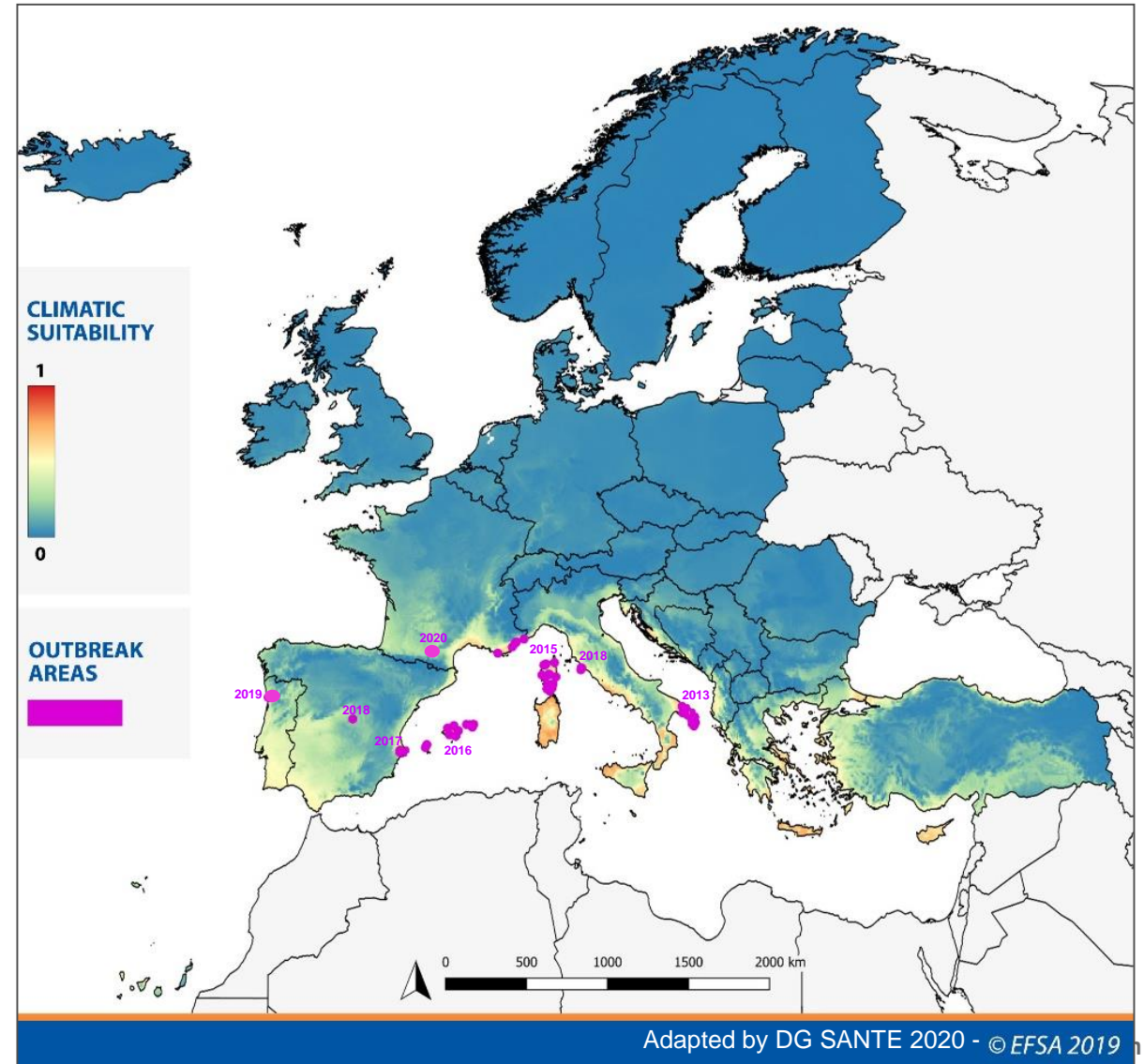
- Porto - eradication (*multiplex*)

- **ITALY**

- Apulia – containment (*pauca*)
- Apulia – eradication (*pauca*)
- Tuscany – eradication (*multiplex*)

- **SPAIN**

- Alicante – eradication (*multiplex*)
- Madrid – eradication (*multiplex*)
- Balearic Islands – containment (*pauca, multiplex and fastidiosa*)



MEASURES APPLICABLE IN DEMARCATED AREAS

Eradication measures

1. More targeted felling:

- Felling limited only to those specified plants found infected in the demarcated area concerned
- Preventing felling for those specified plants located in the 50 m radius

2. Vector control activities: further strengthened

3. Surveillance:

- EFSA Guidelines for statistically sound and risk-based surveys
- Molecular tests (Annex IV) only

Containment measures

1. More targeted felling:

- Felling limited only to infected plants located in the last 5 km infected zone adjacent to buffer zone, and
- ... in proximity of historical sites

2. Vector control activities: further strengthened

3. Surveillance (only in some parts of the infected zone):

- EFSA Guidelines for statistically sound and risk-based surveys
- Molecular tests (Annex IV) only

Planting of specified plants

Planting of specified plants in infected zone is possible if:

- **GENERAL CONDITION** - Those plants are grown under insect-proof facilities
- **CONTAINMENT** - Those plants, preferably resistant/tolerant, are planted in the infected zone, but not in proximity (within 5 km) of the buffer zone
- **ERADICATION** - If those plant species have never been found infected in the demarcated area concerned for at least 2 years

Movement of specified plants

- 1. GENERAL CONDITION** - Restrictions limited to specified plants of the subspecies identified in the demarcated area (e.g. *pauca*, *multiplex*, *fastidiosa*)
- 2. DEROGATION I** - Possibility to move specified plants out of demarcated areas if they spend 3 years in pest free production site
- 3. DEROGATION II** - More flexible approach for specified plants never detected as infected species in the demarcated area concerned (e.g. Apulia: Citrus; Alicante: Olive)

Import – third countries

1. Host plants under strict import restrictions
2. Pest free status to be confirmed by third countries that Xf has been surveyed on the basis of sampling and molecular testing (Annex IV)
3. From January 2023 - EFSA Guidelines for statistically sound and risk-based surveys also applied to third countries

Take-home messages

1. Eradication of Xylella from the Union territory, or preventing its further spread (active containment) when eradication is no possible, remains the EU priority
2. New legislation builds up on latest EFSA scientific evidence and technical information/experience from the different outbreak area
3. Ensuring more targeted and quicker actions in the Xylella control strategy

Thank you for your attention

Useful links – background

1. DG SANTE website on Xylella

https://ec.europa.eu/food/plant/plant_health_biosecurity/legislation/emergency_measures/xylella-fastidiosa_en

2. EFSA website on Xylella <https://www.efsa.europa.eu/en/topics/topic/xylella-fastidiosa>