



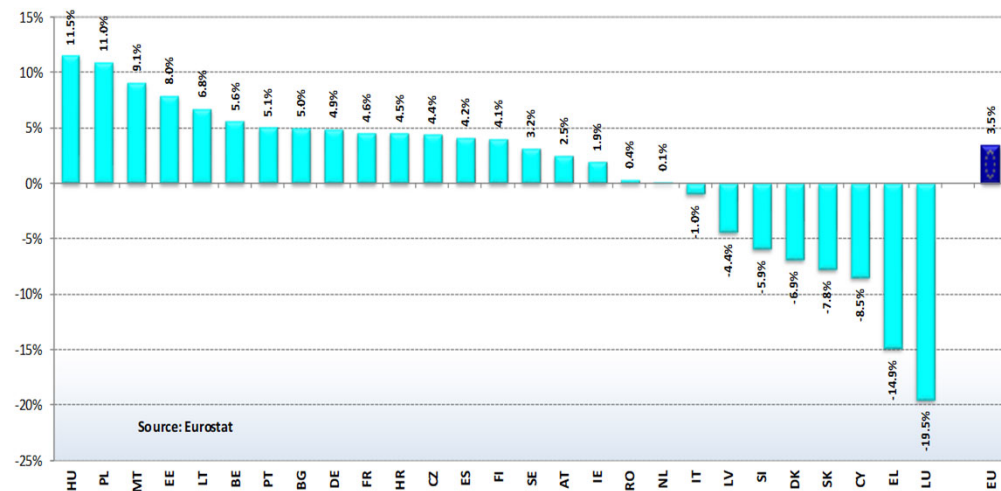
Meat Market Observatory 4 June 2024

Pigmeat market situation

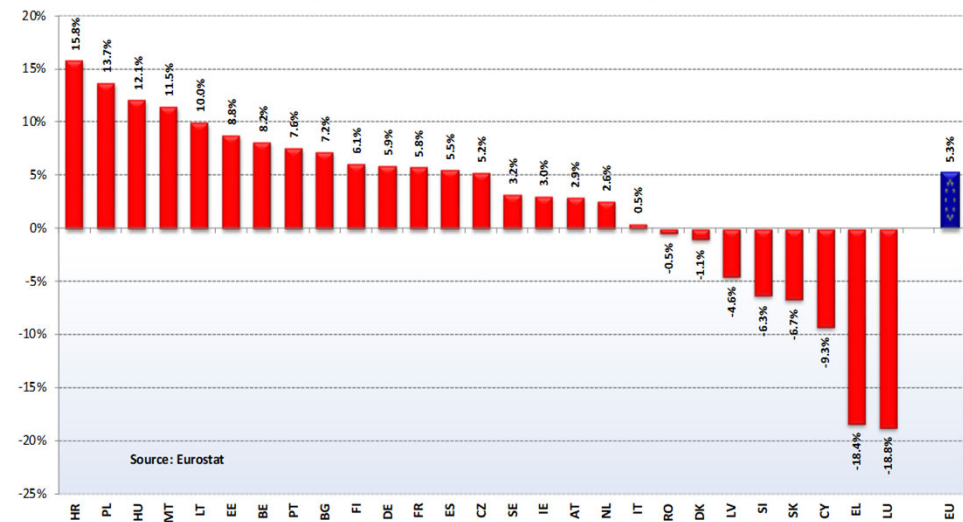
PRODUCTION

% EVOLUTION IN HEADS and TONNES

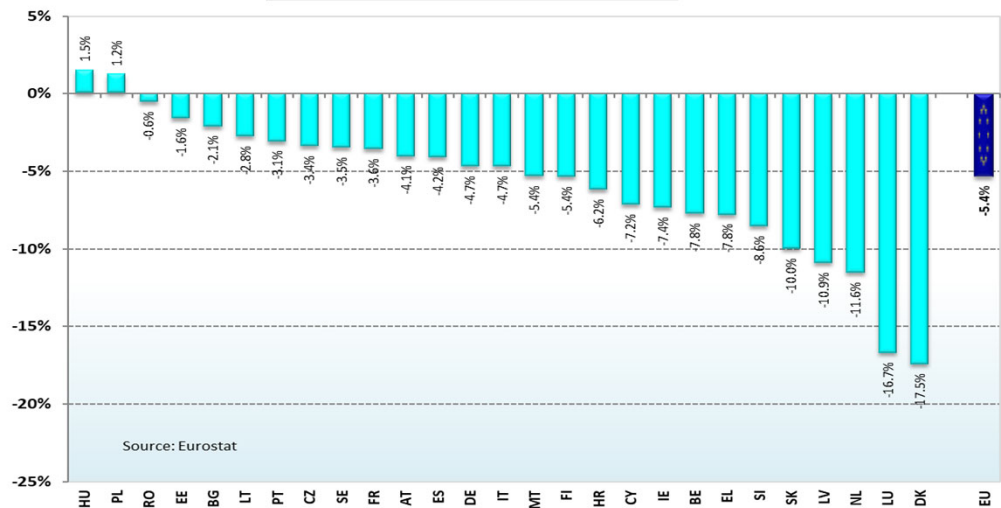
Change in Pig Slaughter ('000 Heads)
2024/2023 (up to February)



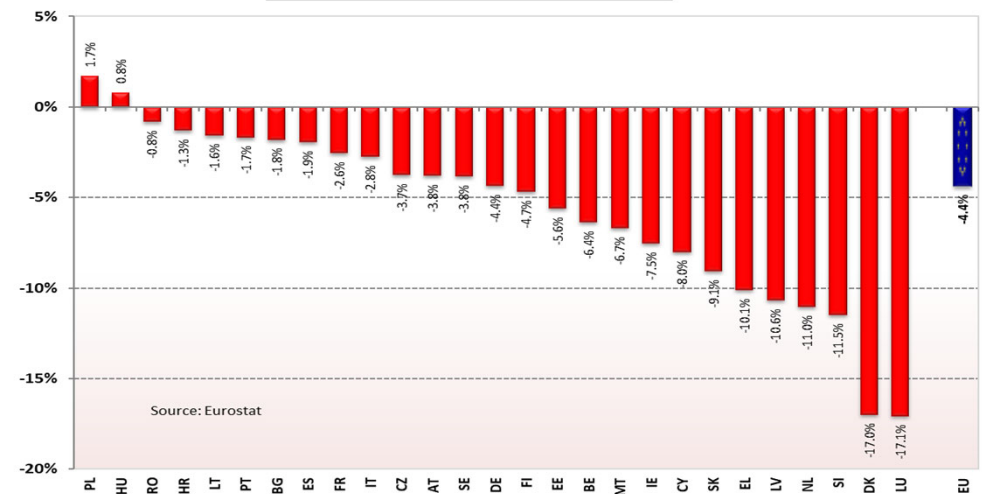
Change in Pig Slaughter ('000 tonnes)
2024/2023 (up to February)



Change in Pig Slaughter ('000 Heads)
Mar 23 - Feb 24 / Mar 22 - Feb 23



Change in Pig Slaughter ('000 tonnes)
Mar 23 - Feb 24 / Mar 22 - Feb 23



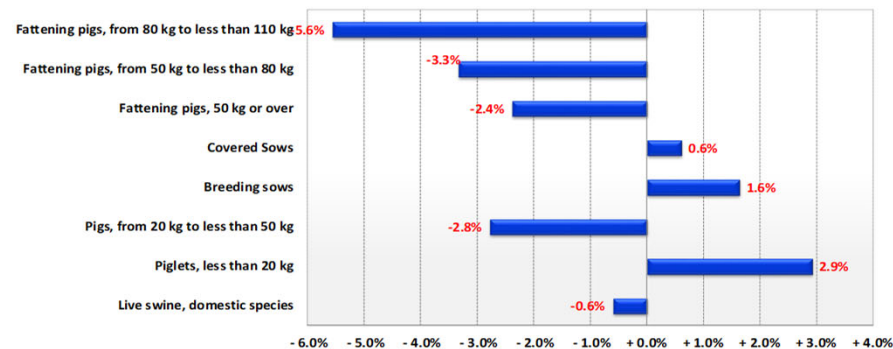
DECEMBER SURVEY (1000 Heads)

Pig population - Livestock survey December 2023



Source: Eurostat

Change in pig population - Livestock survey December 2023 compared to December 2022



Source: Eurostat

DECEMBER SURVEY (1000 Heads)



Pig population/Livestock survey - annual data

(In 1 000 heads)

Source : Eurostat annual data (apro_mt_lspig)

	Live swine, domestic species				% Var 2023 2022	Piglets, live weight of under 20 kg				% Var 2023 2022	Breeding pigs				% Var 2023 2022	Breeding sows, live weight 50 kg or over				% Var 2023 2022	Covered sows				% Var 2023 2022
	2021	2022	2023			2021	2022	2023			2021	2022	2023			2021	2022	2023			2021	2022	2023		
BE	6 042	5 751	5 404	- 6.0%		1 623	1 593	1 489	- 6.5%		389	368	352	- 4.4%		386	365	349	- 4.4%		314	300	287	- 4.4%	
BG	695	602	727	+ 20.8%		155	125	164	+ 31.0%		68	61	81	+ 32.8%		66	60	80	+ 33.2%		39	39	45	+ 15.0%	
CZ	1 493	1 329	1 362	+ 2.5%		468	417	377	- 9.7%		128	117	121	+ 3.1%		126	116	120	+ 3.2%		80	73	74	+ 2.0%	
DK	13 152	11 541	11 368	- 1.5%		4 608	4 118	4 142	+ 0.6%		1 245	1 128	1 142	+ 1.2%		1 235	1 118	1 133	+ 1.3%		777	698	704	+ 0.9%	
DE	23 762	21 366	21 224	- 0.7%		6 991	6 368	6 411	+ 0.7%		1 602	1 416	1 415	- 0.0%		1 583	1 401	1 400	- 0.1%		1 130	1 009	1 005	- 0.4%	
EE	308	269	272	+ 1.1%		104	93	97	+ 4.1%		26	23	24	+ 5.4%		26	23	24	+ 5.7%		21	18	18	- 3.8%	
EL	759	742	737	- 0.6%		192	186	185	- 0.6%		110	101	103	+ 1.1%		104	98	99	+ 1.2%		58	49	48	- 2.0%	
ES	34 454	34 073	34 452	+ 1.1%		9 639	9 760	10 889	+ 11.6%		2 712	2 690	2 827	+ 5.1%		2 685	2 659	2 804	+ 5.4%		1 759	1 753	1 808	+ 3.2%	
FR	12 941	12 183	11 794	- 3.2%		4 731	4 417	4 332	- 1.9%		941	880	860	- 2.3%		928	869	852	- 2.0%		647	606	596	- 1.6%	
HR	972	945	847	- 10.4%		272	231	239	+ 3.5%		107	87	87	+ 0.0%		104	85	85	+ 0.0%		38	33	39	+ 18.2%	
IE	1 714	1 570	1 408	- 10.4%		483	419	363	- 13.3%		146	127	127	- 0.6%		145	127	126	- 0.6%		101	88	81	- 8.6%	
IT	8 408	8 739	9 171	+ 4.9%		1 384	1 688	1 680	- 0.5%		573	717	673	- 6.1%		551	693	649	- 6.3%		464	571	536	- 6.1%	
CY	361	331	310	- 6.4%		128	116	112	- 3.5%		31	27	27	- 1.9%		31	27	26	- 2.4%		26	23	23	+ 0.5%	
LV	327	308	289	- 6.0%		59	57	52	- 8.1%		40	36	36	- 0.0%		40	36	36	+ 0.1%		15	14	14	- 2.0%	
LT	574	517	488	- 5.7%		116	98	98	+ 0.5%		45	40	40	- 0.7%		44	39	39	- 0.4%		36	31	31	+ 0.9%	
LU	78	66	65	- 1.8%		12	9	9	- 2.8%		3	3	3	+ 29.2%		3	2	3	+ 29.8%		2	2	2	+ 27.2%	
HU	2 726	2 558	2 608	+ 1.9%		703	661	693	+ 4.8%		243	230	234	+ 1.5%		241	227	232	+ 1.9%		156	151	158	+ 4.9%	
MT	40	30	36	+ 21.1%		10	7	9	+ 27.8%		4	4	3	- 26.6%		4	4	3	- 27.2%		3	3	2	- 26.8%	
NL	10 872	10 706	10 471	- 2.2%		4 773	4 444	4 542	+ 2.2%		918	892	921	+ 3.3%		910	888	915	+ 3.0%		567	561	565	+ 0.7%	
AT	2 786	2 650	2 516	- 5.0%		655	636	605	- 4.8%		228	212	207	- 2.4%		224	208	204	- 2.3%		158	147	145	- 1.4%	
PL	10 242	9 624	9 770	+ 1.5%		2 145	1 891	2 007	+ 6.1%		665	603	674	+ 11.9%		654	593	663	+ 11.9%		434	405	456	+ 12.8%	
PT	2 221	2 183	2 175	- 0.4%		817	797	832	+ 4.4%		234	230	224	- 2.5%		230	225	220	- 2.3%		157	152	148	- 2.8%	
RO	3 620	3 329	3 200	- 3.9%		609	522	502	- 3.9%		306	289	278	- 3.7%		299	285	274	- 3.7%		183	174	167	- 3.7%	
SI	216	202	196	- 3.0%		42	47	43	- 9.2%		15	14	13	- 3.0%		14	13	13	- 2.5%		8	8	8	- 1.9%	
SK	453	381	403	+ 5.8%		178	145	166	+ 14.9%		38	37	36	- 4.8%		37	36	35	- 1.3%		17	20	20	- 2.3%	
FI	1 094	998	978	- 1.9%		339	302	295	- 2.1%		94	85	83	- 2.5%		93	85	83	- 2.5%		68	62	60	- 2.7%	
SE	1 373	1 416	1 326	- 6.3%		371	365	334	- 8.5%		122	120	106	- 11.5%		121	119	105	- 11.6%		80	79	71	- 10.4%	
EU	141 681	134 410	133 597	- 0.6%		41 608	39 512	40 666	+ 2.9%		11 035	10 537	10 695	+ 1.5%		10 883	10 400	10 569	+ 1.6%		7 338	7 067	7 110	+ 0.6%	

LIVESTOCK

EU EVOLUTION

TOTAL PIG

DECEMBER SURVEY (1000 Heads)



Pig population/Livestock survey - annual data (In 1 000 heads)

	Sows covered for the first time				% Var 2023 2022	Sows, not covered				% Var 2023 2022	Gilts not yet covered				% Var 2023 2022	Pigs, from 20 kg to less than 50 kg				% Var 2023 2022	Fattening pigs, live weight 50 kg or over				% Var 2023 2022
	2021	2022	2023			2021	2022	2023			2021	2022	2023			2021	2022	2023			2021	2022	2023		
BE	54	54	51	-4.3%		72	65	62	-4.3%		36	33	32	-4.2%		1 213	1 128	1 066	-5.5%		2 816	2 663	2 498	-6.2%	
BG	6	3	14	+299.1%		26	21	35	+67.8%		5	7	12	+78.6%		197	162	172	+6.2%		274	254	311	+22.3%	
CZ	18	19	18	-0.1%		47	43	46	+5.3%		21	21	22	+5.8%		329	294	332	+12.8%		568	500	533	+6.5%	
DK	192	174	174	+0.0%		458	420	429	+2.1%		215	203	209	+3.0%		4 032	3 571	3 527	-1.2%		3 267	2 724	2 557	-6.1%	
DE	181	157	165	+4.8%		454	392	395	+0.7%		195	159	166	+4.3%		4 173	3 866	3 832	-0.9%		10 996	9 716	9 566	-1.5%	
EE	3	3	2	-13.7%		5	4	6	+47.3%		4	3	5	+42.0%		59	51	46	-9.5%		119	103	106	+2.6%	
EL	17	13	14	+11.8%		46	49	51	+4.5%		11	12	12	+0.0%		180	174	175	+0.7%		276	281	274	-2.2%	
ES	276	284	329	+15.9%		926	907	995	+9.8%		358	343	395	+15.1%		8 016	7 820	7 139	-8.7%		14 087	13 803	13 597	-1.5%	
FR	114	107	108	+1.0%		281	264	256	-2.8%		110	100	103	+2.9%		1 961	1 817	1 765	-2.9%		5 309	5 068	4 837	-4.5%	
HR	8	7	7	+0.0%		66	52	46	-11.5%		15	7	10	+42.9%		162	153	147	-3.9%		431	474	374	-21.1%	
IE	21	16	18	+13.6%		44	38	45	+17.7%		17	14	15	+7.9%		423	387	369	-4.5%		663	638	549	-13.9%	
IT	81	104	96	-7.7%		87	121	114	-5.8%		42	45	49	+8.9%		1 611	1 556	1 761	+13.2%		4 839	4 778	5 057	+5.8%	
CY	4	4	4	-15.0%		5	4	3	-18.1%		3	3	2	-24.0%		73	66	61	-8.3%		128	122	110	-9.2%	
LV	4	4	4	-1.8%		25	22	22	+1.4%		16	15	15	+3.2%		98	94	90	-4.1%		129	121	111	-8.3%	
LT	6	6	6	+9.9%		9	9	8	-4.9%		6	6	7	+3.6%		152	143	143	+0.3%		261	237	207	-12.7%	
LU	0	0	0	+50.0%		1	1	1	+36.0%		0	0	0	+40.9%		21	20	19	-5.7%		42	35	34	-1.6%	
HU	36	35	34	-3.5%		85	76	73	-4.1%		37	45	44	-1.3%		585	539	528	-2.0%		1 195	1 128	1 153	+2.2%	
MT	0	0	0	-26.3%		0	0	0	-26.1%		0	0	0	-26.1%		10	7	9	+27.8%		16	11	15	+27.7%	
NL	107	112	109	-2.7%		343	327	349	+6.7%		145	147	145	-1.4%		1 549	1 543	1 460	-5.4%		3 632	3 827	3 548	-7.3%	
AT	23	20	20	+0.6%		66	62	59	-4.5%		22	21	20	-1.9%		728	681	642	-5.6%		1 175	1 122	1 062	-5.3%	
PL	70	65	77	+20.0%		220	188	207	+10.1%		42	47	50	+4.7%		3 041	2 788	2 836	+1.7%		4 391	4 342	4 253	-2.1%	
PT	31	29	31	+6.7%		72	73	72	-1.2%		25	26	26	-0.3%		418	401	395	-1.5%		752	756	724	-4.2%	
RO	41	57	54	-4.1%		116	111	107	-3.7%		38	38	36	-4.2%		716	704	675	-4.1%		1 988	1 814	1 745	-3.8%	
SI	2	1	2	+26.5%		6	5	5	-3.4%		2	1	1	+10.6%		40	31	33	+7.3%		119	110	107	-3.2%	
SK	2	4	4	+10.2%		20	15	15	+0.0%		7	6	6	-13.4%		72	65	74	+15.0%		165	134	127	-5.5%	
FI	14	12	12	-3.0%		25	23	22	-1.8%		15	14	13	-1.0%		256	231	227	-1.7%		405	380	373	-1.8%	
SE	58	29	24	-17.1%		41	39	34	-14.2%		26	23	22	-3.6%		330	360	330	-8.3%		550	571	556	-2.6%	
EU	1 368	1 318	1 378	+4.6%		3 545	3 331	3 459	+3.8%		1 414	1 340	1 418	+5.8%		30 445	28 650	27 854	-2.8%		58 594	55 711	54 382	-2.4%	

DG AGRI E3
4 June 2024

DECEMBER SURVEY (1000 Heads)



Pig population/Livestock survey - annual data (In 1 000 heads)

	Fattening pigs, from 50 kg to less than 80 kg				% Var 2023 2022	Fattening pigs, from 80 kg to less than 110 kg				% Var 2023 2022	Fattening pigs, live weight 110 kg or over				% Var 2023 2022	Breeding boars				% Var 2023 2022
	2021	2022	2023			2021	2022	2023			2021	2022	2023			2021	2022	2023		
BE	1 298	1 257	1 179	- 6.2%		1 222	1 117	1 047	- 6.2%		296	289	271	- 6.2%		3	3	3	- 4.8%	
BG	170	124	157	+ 26.7%		99	127	149	+ 17.4%		5	3	5	+ 43.5%		2	1	1	+ 3.7%	
CZ	268	228	243	+ 6.4%		231	206	236	+ 14.2%		69	66	54	- 17.3%		2	1	1	- 11.2%	
DK	2 608	2 174	2 042	- 6.1%		652	544	510	- 6.1%		7	6	5	- 16.7%		10	10	9	- 10.0%	
DE	4 832	4 247	4 226	- 0.5%		4 815	4 306	4 174	- 3.1%		1 349	1 164	1 166	+ 0.2%		19	15	15	+ 2.7%	
EE	55	52	48	- 8.7%		45	37	42	+ 11.6%		19	14	16	+ 21.2%		0	0	0	- 22.7%	
EL	140	130	129	- 0.9%		102	113	109	- 3.2%		35	37	36	- 3.8%		6	4	4	- 2.7%	
ES	5 311	5 557	5 135	- 7.6%		6 172	6 070	5 644	- 7.0%		2 604	2 176	2 818	+ 29.5%		28	31	23	- 26.1%	
FR	2 418	2 254	2 153	- 4.5%		2 133	2 073	1 956	- 5.6%		758	741	728	- 1.8%		12	11	8	- 28.6%	
HR	169	115	128	+ 11.3%		120	164	78	- 52.4%		142	195	168	- 13.8%		3	2	2	+ 0.0%	
IE	339	318	277	- 12.8%		282	276	234	- 15.0%		42	44	38	- 15.0%		1	1	1	+ 9.3%	
IT	1 329	1 272	1 480	+ 16.4%		1 383	1 383	1 307	- 5.5%		2 128	2 123	2 270	+ 6.9%		22	24	23	- 4.2%	
CY	65	62	58	- 6.7%		60	57	51	- 9.5%		3	3	1	- 61.5%		0	0	0	+ 52.0%	
LV	72	68	62	- 8.7%		54	50	46	- 7.8%		3	3	3	- 9.1%		0	0	0	- 10.8%	
LT	132	141	128	- 9.6%		107	75	68	- 9.4%		23	21	11	- 45.9%		0	0	0	- 31.8%	
LU	19	14	13	- 2.8%		15	12	16	+ 31.3%		8	9	5	- 47.4%		0	0	0	+ 0.0%	
HU	467	449	467	+ 4.1%		471	437	469	+ 7.3%		258	242	217	- 10.5%		2	3	2	- 29.6%	
MT	10	7	9	+ 27.8%		5	4	5	+ 27.6%		1	1	1	+ 29.0%		0	0	0	- 9.1%	
NL	1 587	1 630	1 503	- 7.8%		1 439	1 559	1 434	- 8.0%		606	637	611	- 4.1%		8	4	6	+ 50.0%	
AT	537	519	505	- 2.7%		484	455	431	- 5.4%		153	147	126	- 14.6%		4	4	3	- 5.7%	
PL	2 069	1 956	1 865	- 4.7%		1 794	1 816	1 701	- 6.3%		528	570	687	+ 20.5%		11	10	11	+ 11.8%	
PT	405	410	417	+ 1.7%		294	300	268	- 10.9%		53	46	39	- 13.9%		5	5	4	- 12.4%	
RO	554	509	492	- 3.4%		663	624	601	- 3.7%		771	681	652	- 4.2%		7	5	4	- 4.3%	
SI	30	32	26	- 18.4%		34	31	29	- 9.1%		55	47	52	+ 11.0%		1	0	0	- 16.3%	
SK	69	66	58	- 11.7%		66	47	47	+ 1.4%		30	21	21	- 1.2%		1	2	0	- 73.6%	
FI	185	172	170	- 1.0%		161	151	148	- 2.5%		60	56	55	- 2.5%		1	1	1	- 8.5%	
SE	230	232	226	- 2.9%		218	226	221	- 2.3%		101	113	110	- 2.7%		1	2	2	- 1.3%	
EU	25 368	23 996	23 195	- 3.3%		23 121	22 260	21 021	- 5.6%		10 105	9 454	10 166	+ 7.5%		151	138	124	- 9.6%	

PIG PRICES

EU EVOLUTION

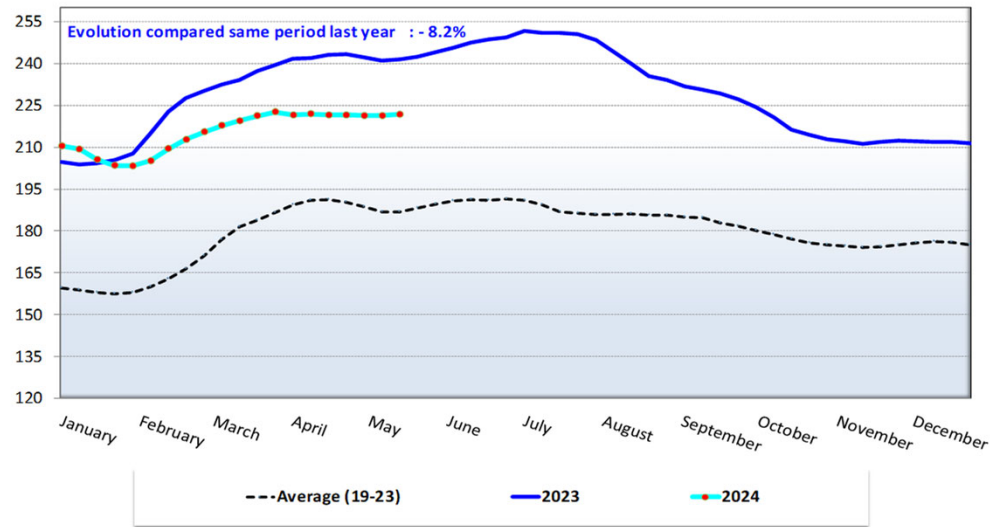
EU Prices	Week 20		Evolution since last week	Evolution since last month	Evolution since last year
Average (S-E)	221.7	€/100 kg carcass weight	+ 0.2%	+ 0.1%	- 8.2%
Class S	222.6		+ 0.2%	- 0.0%	- 8.4%
Class E	219.8		+ 0.3%	+ 0.4%	- 7.8%
Piglet	84.2	€/head	- 1.7%	- 5.5%	- 5.1%

PRICES CARCASSES AND PIGLETS

EU EVOLUTION

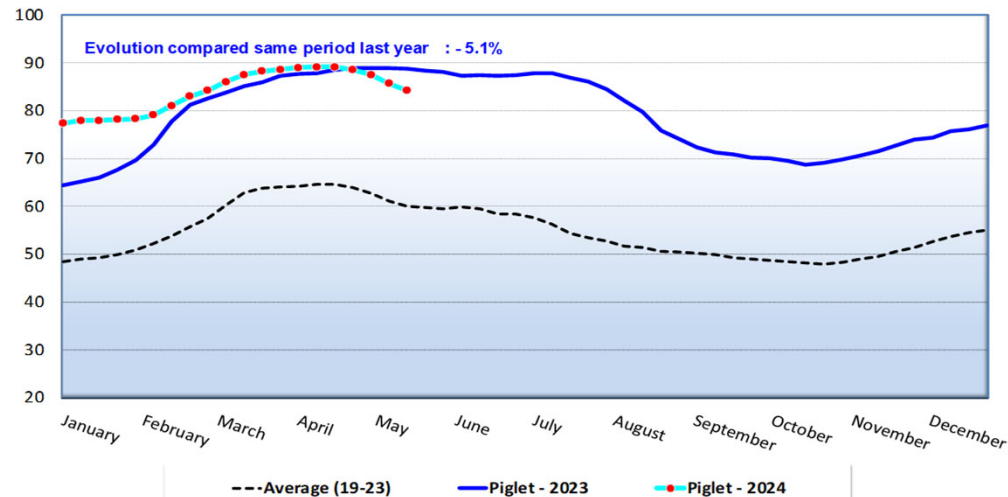
Evolution of the EU pig carcass prices (average class E & S)

Week 20 latest price ==> 2 21.73 EUR/100 kg/cw



Evolution of the EU average piglet prices
(€/head)

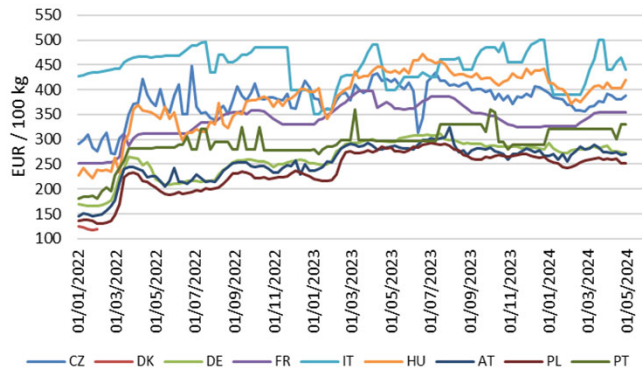
Week 20 latest price ==> 84.23 EUR/head



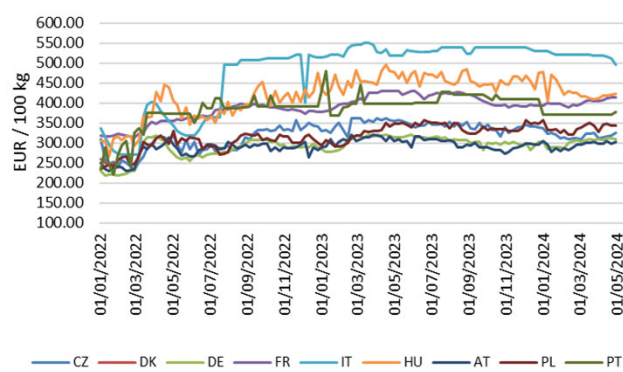
PRICES CUTS

EVOLUTION

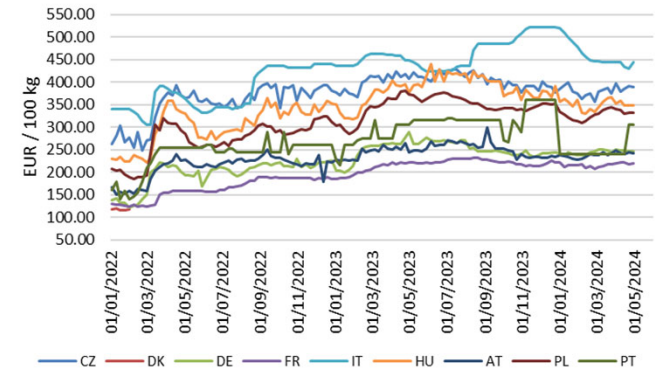
Ham



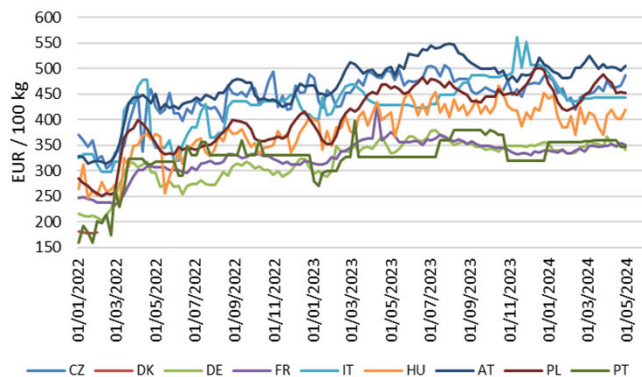
Belly



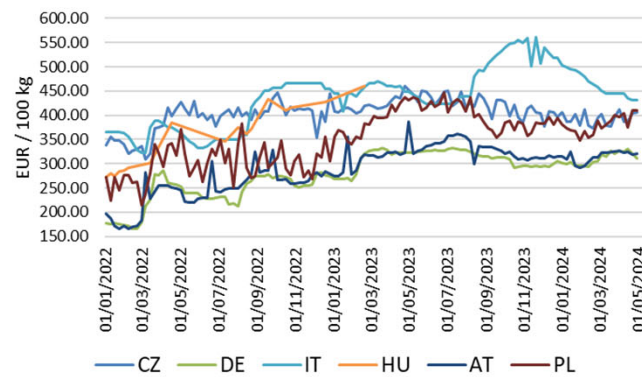
Shoulder



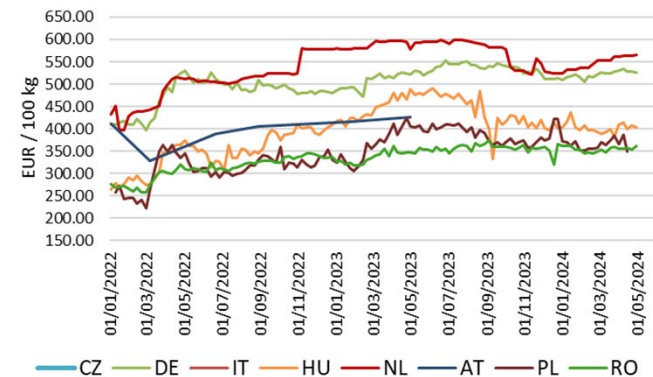
Loin



Minced meat

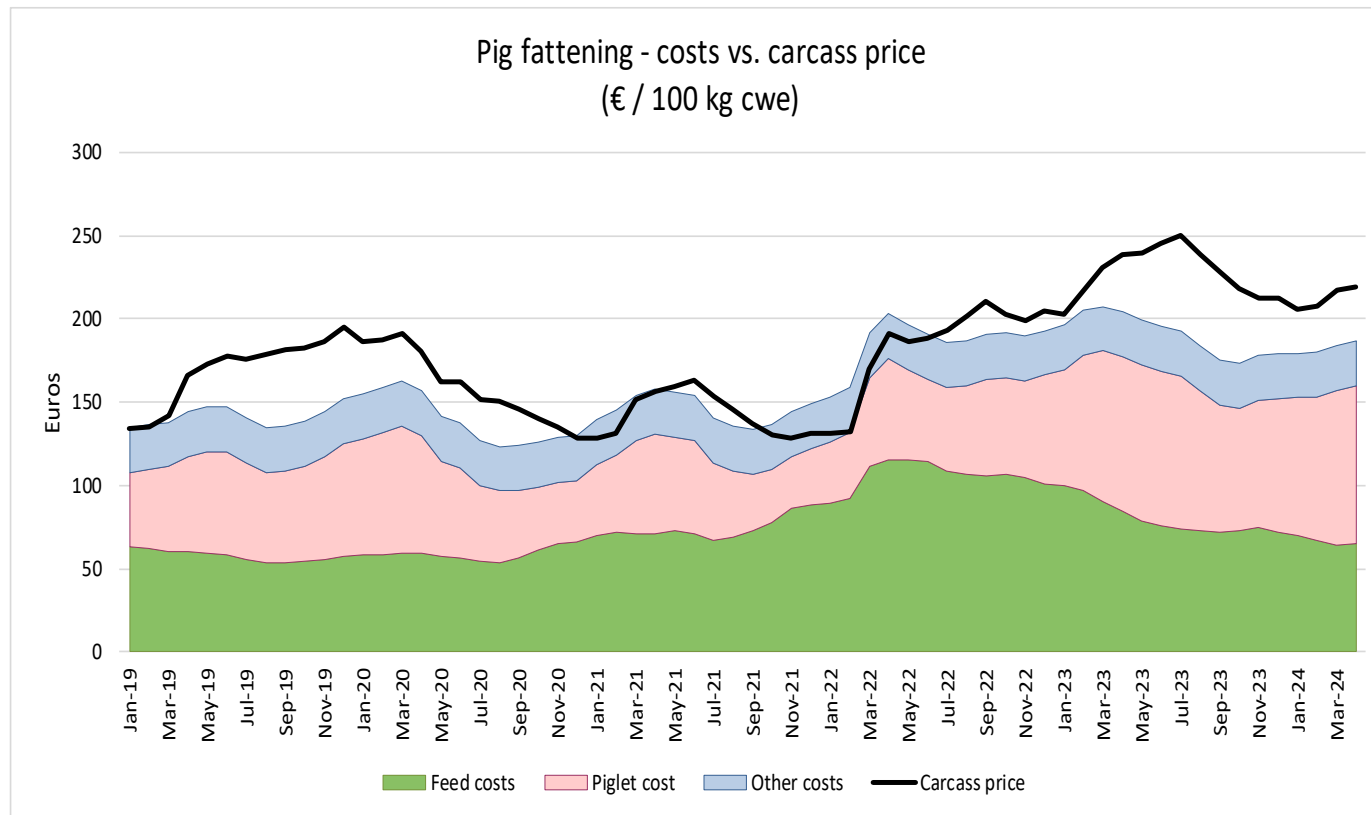


Minced meat - Retail



REMAINDER PIG

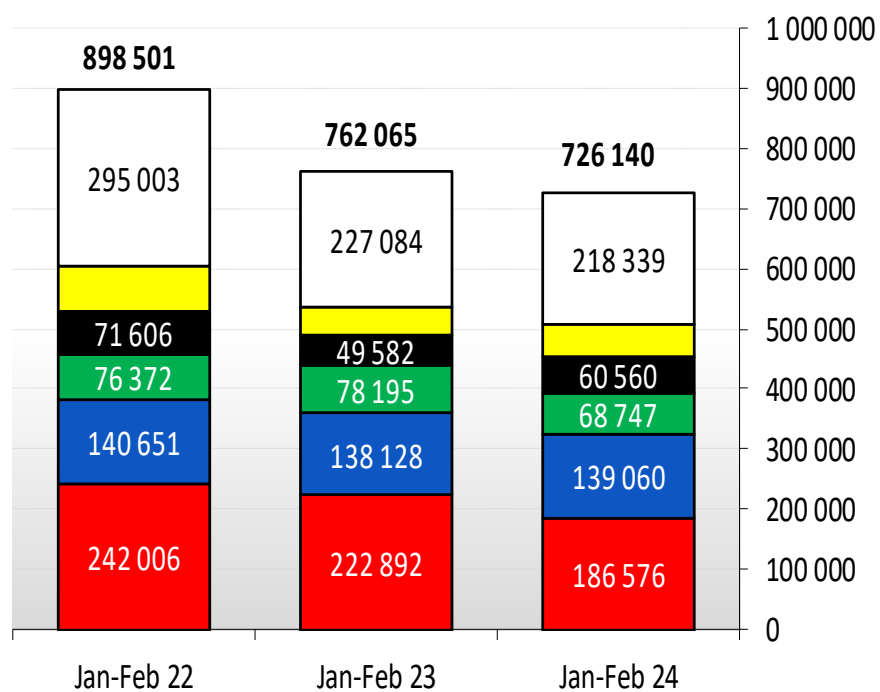
EU EVOLUTION



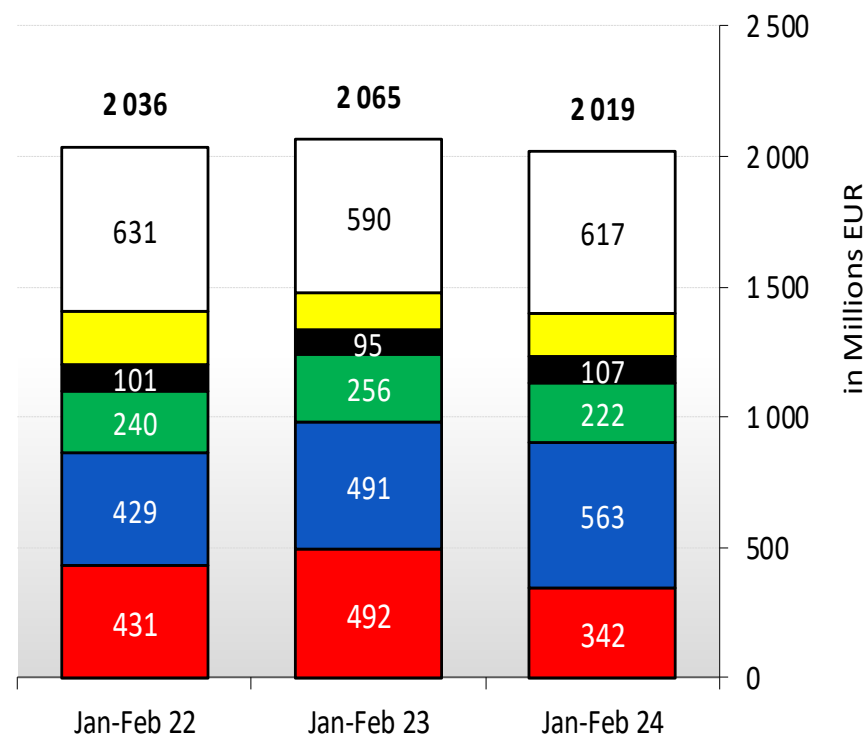
EU exports of selected PIG products Trade figures (COMEXT – tonnes carcass weight)

EU EXPORTS of PIG Meat (Tonnes carc. weight)

Tons (cw)



EU EXPORTS of PIG Meat (Millions EUR)



EU exports of selected PIG products: Trade figures (COMEXT – tonnes carcass weight)

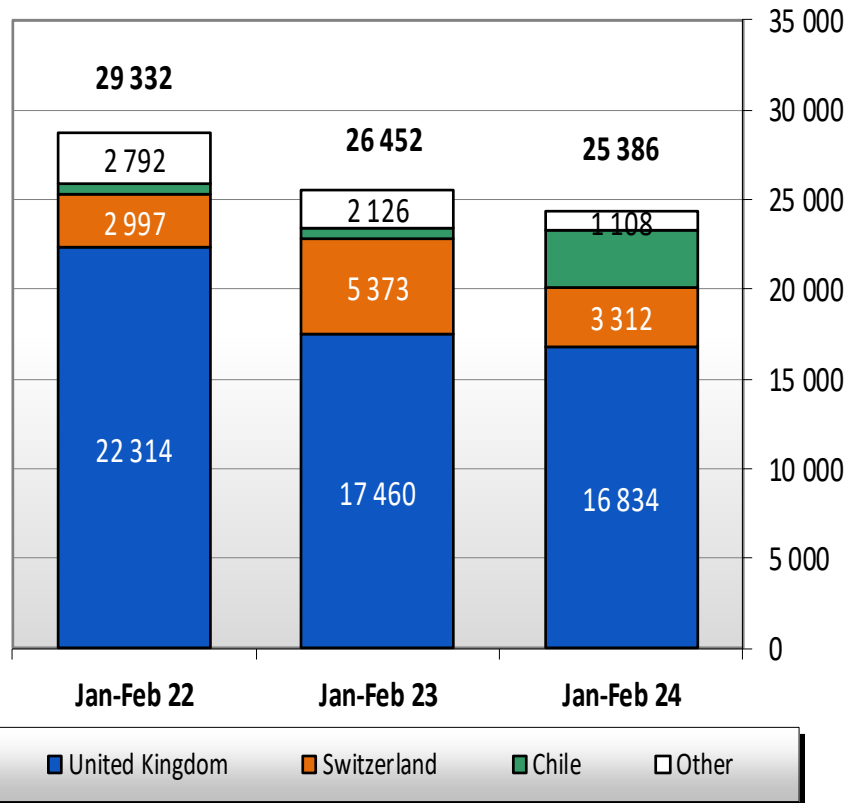
	2020		2021		2022		2023		Jan-Feb 24		Compared to Jan-Feb 23
	tonnes	%	tonnes	%	tonnes	%	tonnes	%	tonnes	%	
China	3 337 529	52.3%	2 574 644	41.5%	1 553 366	29.2%	1 157 717	27.3%	186 576	25.7%	- 16.3%
United Kingdom	963 955	15.1%	921 136	14.9%	888 495	16.7%	897 447	21.2%	139 060	19.2%	+ 0.7%
Japan	360 071	5.6%	380 327	6.1%	466 535	8.8%	355 828	8.4%	68 747	9.5%	- 12.1%
Philippines	152 947	2.4%	350 650	5.7%	428 843	8.1%	289 401	6.8%	60 560	8.3%	+ 22.1%
South Korea	195 115	3.1%	284 447	4.6%	320 292	6.0%	242 584	5.7%	52 859	7.3%	+ 14.5%
Vietnam	96 366	1.5%	131 706	2.1%	89 650	1.7%	118 536	2.8%	28 139	3.9%	+++
USA	104 388	1.6%	144 399	2.3%	135 555	2.6%	102 028	2.4%	21 538	3.0%	+ 35.8%
Australia	83 887	1.3%	133 836	2.2%	157 372	3.0%	94 217	2.2%	18 153	2.5%	- 19.9%
Ivory Coast	59 578	0.9%	90 159	1.5%	100 219	1.9%	79 579	1.9%	13 545	1.9%	- 11.7%
Serbia	54 453	0.9%	63 389	1.0%	86 560	1.6%	78 394	1.9%	12 010	1.7%	+ 23.6%
Hong Kong	283 590	4.4%	153 858	2.5%	78 451	1.5%	67 060	1.6%	12 009	1.7%	- 6.1%
Malaysia	14 846	0.2%	16 220	0.3%	38 648	0.7%	55 121	1.3%	10 172	1.4%	+ 9.9%
Taiwan	40 945	0.6%	78 457	1.3%	82 172	1.5%	60 811	1.4%	9 935	1.4%	- 29.6%
Congo	36 383	0.6%	44 981	0.7%	53 710	1.0%	53 231	1.3%	7 284	1.0%	+ 9.5%
Ukraine	82 619	1.3%	95 511	1.5%	104 095	2.0%	52 553	1.2%	6 373	0.9%	- 38.4%
New Zealand	33 263	0.5%	48 867	0.8%	46 134	0.9%	30 190	0.7%	4 695	0.6%	- 18.6%
Singapore	35 545	0.6%	34 128	0.6%	36 156	0.7%	33 333	0.8%	4 478	0.6%	- 17.4%
Other Destinations	448 125	7.0%	653 368	10.5%	649 056	12.2%	466 229	11.0%	70 009	9.6%	
Extra-EU	6 383 604		6 200 083		5 315 312		4 234 259		726 140		
% change			- 3%		- 14%		- 20%		- 4.7%		

EU exports of selected PIG products: Trade figures (COMEXT – million €)

	2020		2021		2022		2023		Jan-Feb 24		Compared
	Millions €	%	Millions €	%	Millions €	%	Millions €	%	Millions €	%	to Jan-Feb 23
United Kingdom	2,914,369	19.3%	2,865,808	19.7%	3,076,089	22.2%	3,577,252	29.3%	562,952	27.9%	+ 14.7%
China	7,107,036	47.0%	5,292,336	36.4%	3,451,223	25.0%	2,457,585	20.1%	342,159	16.9%	- 30.5%
Japan	1,289,036	8.5%	1,285,851	8.9%	1,520,482	11.0%	1,164,109	9.5%	222,398	11.0%	- 13.0%
South Korea	594,690	3.9%	917,208	6.3%	973,239	7.0%	807,513	6.6%	168,074	8.3%	+ 19.0%
USA	457,905	3.0%	635,941	4.4%	677,762	4.9%	581,777	4.8%	117,547	5.8%	+ 39.5%
Philippines	218,588	1.4%	570,810	3.9%	806,188	5.8%	573,518	4.7%	106,607	5.3%	+ 12.7%
Australia	238,539	1.6%	357,279	2.5%	400,769	2.9%	285,823	2.3%	52,446	2.6%	- 17.5%
Serbia	111,329	0.7%	114,591	0.8%	191,488	1.4%	225,915	1.8%	34,826	1.7%	+ 31.5%
Vietnam	113,617	0.8%	156,062	1.1%	116,879	0.8%	139,377	1.1%	31,343	1.6%	+ 98.0%
Hong Kong	456,427	3.0%	281,409	1.9%	192,433	1.4%	178,448	1.5%	29,584	1.5%	- 8.2%
Taiwan	97,079	0.6%	160,587	1.1%	187,995	1.4%	171,258	1.4%	29,027	1.4%	- 18.3%
Malaysia	41,407	0.3%	40,935	0.3%	93,672	0.7%	151,410	1.2%	28,852	1.4%	+ 21.7%
Canada	131,811	0.9%	197,281	1.4%	227,737	1.6%	165,419	1.4%	26,886	1.3%	- 13.5%
Switzerland	150,140	1.0%	147,480	1.0%	145,717	1.1%	147,142	1.2%	23,207	1.1%	+ 18.0%
Ukraine	95,313	0.6%	115,824	0.8%	175,512	1.3%	104,280	0.9%	15,236	0.8%	- 16.0%
New Zealand	93,912	0.6%	116,208	0.8%	116,506	0.8%	92,545	0.8%	14,538	0.7%	- 10.7%
Singapore	106,455	0.7%	90,422	0.6%	103,244	0.7%	102,413	0.8%	13,260	0.7%	- 20.4%
Other Destinations	893,753	5.9%	1,180,891	8.1%	1,375,210	9.9%	1,300,686	10.6%	200,087	9.9%	
Total to Third Countries	15,111,407		14,526,922		13,832,146		12,226,471		2,019,030		
% change			- 4%		- 5%		- 12%		- 2.2%		

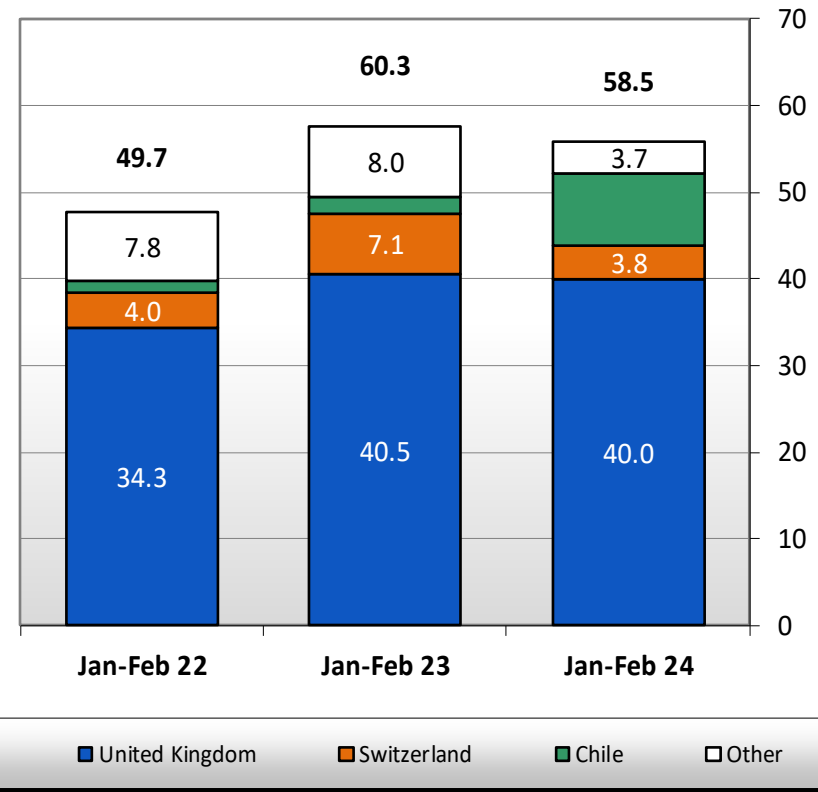
EU imports of selected PIG products Trade figures (COMEXT – tonnes carcass weight)

IMPORTS of PIG Meat into EU (Tonnes c. weight)



EU*: without UK

IMPORTS of PIG Meat into EU (Millions EUR)



EU*: without UK

EU imports of selected PIG products

Trade figures (COMEXT – tonnes carcass weight)

	2020		2021		2022		2023		Jan-Feb 24		Compared
	tonnes	%	tonnes	%	tonnes	%	tonnes	%	tonnes	%	to Jan-Feb 23
United Kingdom	176 896	82.1%	110 253	71.9%	139 841	76.1%	109 751	66.3%	16 834	66.3%	- 3.6%
Switzerland	19 296	9.0%	19 957	13.0%	19 147	10.4%	23 704	14.3%	3 312	13.0%	- 38.4%
Chile	2 320	1.1%	2 302	1.5%	4 859	2.6%	14 415	8.7%	3 099	12.2%	+++
Norway	5 426	2.5%	5 679	3.7%	4 701	2.6%	4 900	3.0%	1 032	4.1%	+ 18.9%
Other Origins	11 602	5.4%	15 108	9.9%	15 282	8.3%	12 802	7.7%	1 108	4.4%	
Extra-EU	215 540		153 298		183 831		165 571		25 386		
% change			- 29%		+ 20%		- 10%		- 4.0%		

EU imports of selected PIG products

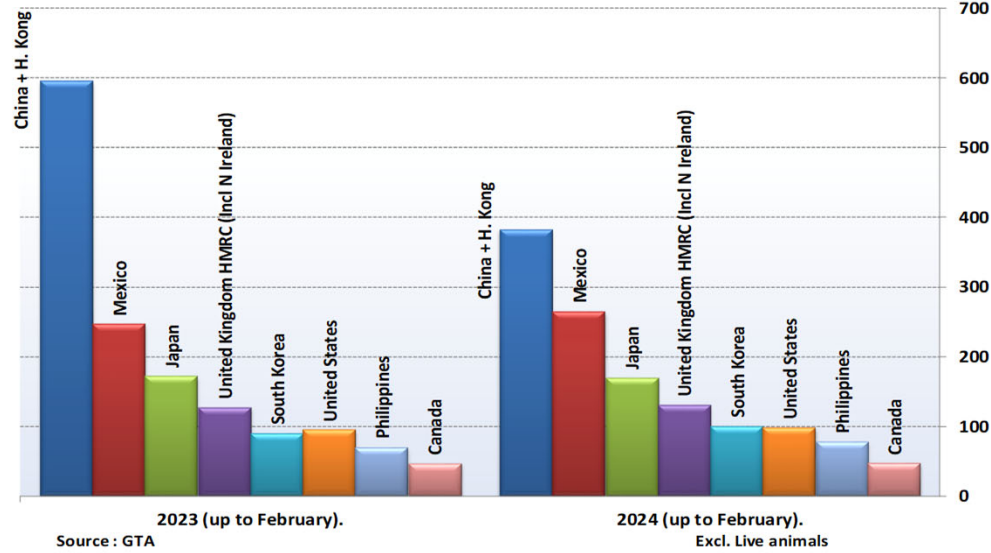
Trade figures (COMEXT – thousand €)

	2020		2021		2022		2023		Jan-Feb 24		Compared
	Thousand eur	%	Thousand eur	%	Thousand eur	%	Thousand eur	%	Thousand eur	%	to Jan-Feb 23
United Kingdom	341,436	82.2%	208,513	71.0%	266,520	71.6%	277,021	68.3%	40,017	68.4%	- 1.3%
Switzerland	20,007	4.8%	21,304	7.2%	25,443	6.8%	31,690	7.8%	3,764	6.4%	- 46.7%
Chile	6,465	1.6%	5,750	2.0%	12,319	3.3%	37,191	9.2%	8,373	14.3%	+++
Norway	12,603	3.0%	15,254	5.2%	13,027	3.5%	13,142	3.2%	2,611	4.5%	- 5.5%
Other Origins	34,659	8.3%	43,043	14.6%	54,889	14.7%	46,381	11.4%	3,713	6.3%	
Total from Third Countries	415,170		293,864		372,199		405,425		58,478		
% change			- 29%		+ 27%		+ 9%		- 3.0%		

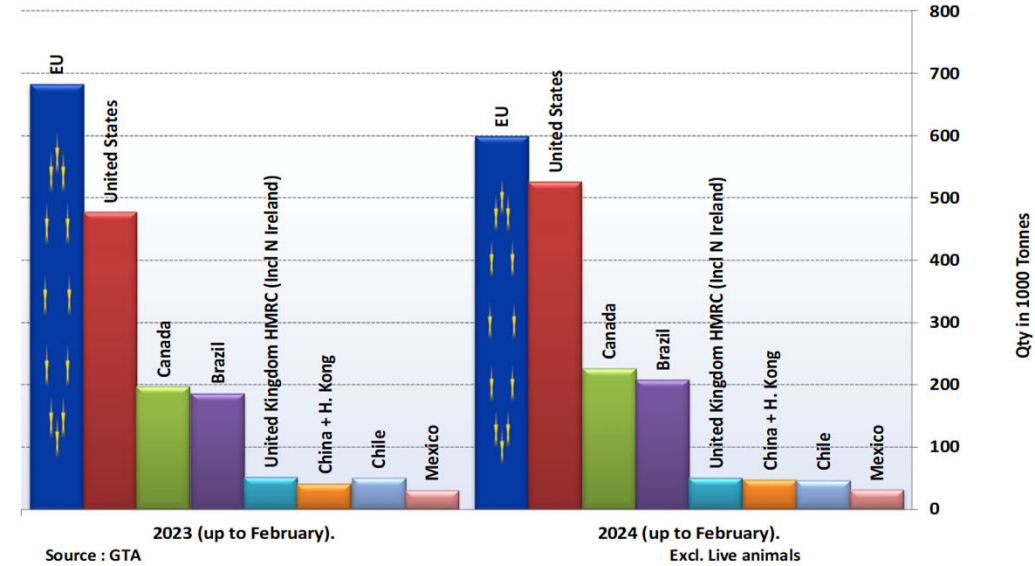
WORLD PIG MARKET

IMPORTS PIG MAIN IMPORTERS

Main Importers of PIG Products (up to February).



Main Exporters of PIG Products (up to February).



World weekly average Pig prices 2020 - 2022 in Euro / 100 kg carcass weight (EU, Brazil, USA and Canada)



DG AGRI E3
4 June 2024

Follow market updates via the Meat Market Observatory

http://ec.europa.eu/agriculture/market-observatory/meat/index_en.htm > Pigmeat

and check the latest data on the Agri-Food Data Portal:

http://agridata.ec.europa.eu/extensions/DataPortal/agricultural_markets.html > Pigmeat