



BEEF & VEAL MARKET SITUATION



Meat market observatory 22 February 2024

LIVESTOCK

JUNE SURVEY

EU EVOLUTION
TOTAL BOVINE

May/Jun 1000 Hd	TOT LIVESTOCK				%Var 2023 2022	BOVINE < 1 Year				%Var 2023 2022	BOVINE 1-2 Year				%Var 2023 2022	BOVINE > 2 Year				%Var 2023 2022
	2020	2021	2022	2023		2020	2021	2022	2023		2020	2021	2022	2023		2020	2021	2022	2023	
BE	2,388	2,353	2,241	2,281	+1.8%	716	712	656	677	+3.2%	471	473	463	456	-1.5%	1,201	1,169	1,121	1,148	+2.4%
BG																				
CZ																				
DK	1,517	1,503	1,484	1,454	-2.1%	517	517	510	498	-2.4%	291	287	290	281	-2.9%	709	699	684	674	-1.4%
DE	11,423	11,176	10,986	10,937	-0.5%	3,410	3,398	3,296	3,260	-1.1%	2,683	2,591	2,620	2,595	-0.9%	5,330	5,188	5,071	5,082	+0.2%
EE																				
IE	7,314	7,359	7,396	7,341	-0.7%	2,117	2,146	2,134	2,074	-2.8%	1,807	1,910	1,949	1,922	-1.4%	3,390	3,303	3,313	3,346	+1.0%
EL																				
ES	6,715	6,923	6,754	6,529	-3.3%	2,488	2,634	2,569	2,410	-6.2%	930	973	902	926	+2.6%	3,297	3,316	3,283	3,192	-2.7%
FR	18,200	17,863	17,416	17,039	-2.2%	5,144	5,134	4,949	4,838	-2.2%	3,249	3,158	3,144	3,077	-2.2%	9,808	9,571	9,323	9,125	-2.1%
HR																				
IT	6,116	6,174	6,087	5,975	-1.8%	1,746	1,762	1,725	1,663	-3.6%	1,458	1,476	1,475	1,439	-2.4%	2,912	2,936	2,887	2,873	-0.5%
CY																				
LV																				
LT																				
LU																				
HU																				
MT																				
NL	3,766	3,732	3,766	3,749	-0.5%	1,558	1,523	1,546	1,506	-2.6%	446	479	493	506	+2.6%	1,762	1,729	1,726	1,736	+0.6%
AT	1,844	1,846	1,842	1,826	-0.9%	588	596	592	574	-3.1%	416	413	422	426	+0.9%	841	838	828	826	-0.2%
PL	6,344	6,401	6,444	6,354	-1.4%	1,729	1,789	1,916	1,855	-3.2%	1,796	1,856	1,674	1,670	-0.2%	2,819	2,756	2,855	2,828	-0.9%
PT	1,751	1,723	1,680	1,608	-4.3%	557	550	554	511	-7.9%	264	252	229	229	+0.2%	929	922	897	868	-3.3%
RO	1,915	1,864	1,852	1,833	-1.0%	418	386	379	370	-2.3%	217	207	220	224	+1.8%	1,280	1,271	1,254	1,239	-1.2%
SI																				
SK																				
FI																				
SE	1,453	1,453	1,449	1,444	-0.3%	462	465	458	458	+0.2%	362	369	374	371	-1.0%	629	619	617	615	-0.3%
EU	70,747	70,371	69,398	68,369	-1.5%	21,451	21,612	21,285	20,695	-2.8%	14,389	14,444	14,255	14,122	-0.9%	34,907	34,315	33,858	33,552	-0.9%

Source : EStat Newcronos

EU %Var is calculated considering only countries available in 2022 AND 2023

LIVESTOCK

JUNE SURVEY

EU EVOLUTION TOTAL BOVINE

May/Jun 1000 Hd	TOTAL COWS				%Var 2023 2022	DAIRY COWS				%Var 2023 2022	OTHER COWS				%Var 2023 2022
	2020	2021	2022	2023		2020	2021	2022	2023		2020	2021	2022	2023	
BE	954	937	902	918	+1.7%	544	539	527	541	+2.7%	409	399	375	377	+0.4%
BG															
CZ															
DK	653	647	634	625	-1.4%	567	565	557	553	-0.7%	86	82	77	72	-6.7%
DE	4,609	4,517	4,430	4,399	-0.7%	3,969	3,892	3,817	3,775	-1.1%	640	626	612	623	+1.8%
EE															
IE	2,551	2,545	2,541	2,519	-0.9%	1,568	1,605	1,627	1,647	+1.2%	983	940	913	872	-4.5%
EL															
ES	2,927	2,987	2,951	2,878	-2.5%	810	828	816	791	-3.1%	2,117	2,159	2,135	2,087	-2.2%
FR	7,442	7,315	7,159	6,960	-2.8%	3,403	3,331	3,266	3,167	-3.0%	4,039	3,984	3,893	3,793	-2.6%
HR															
IT	2,130	2,161	2,130	2,123	-0.3%	1,844	1,852	1,821	1,798	-1.3%	286	309	309	325	+5.1%
CY															
LV															
LT															
LU															
HU															
MT															
NL	1,651	1,627	1,623	1,628	+0.3%	1,593	1,571	1,571	1,576	+0.3%	58	56	53	52	-1.4%
AT	716	715	710	704	-0.8%	523	531	549	546	-0.6%	193	184	161	158	-1.6%
PL	2,468	2,388	2,208	2,160	-2.2%	2,218	2,113	2,072	2,027	-2.2%	250	276	136	133	-1.7%
PT	757	757	742	718	-3.2%	239	236	227	224	-1.2%	517	521	515	494	-4.0%
RO	1,160	1,148	1,135	1,111	-2.1%	1,145	1,133	1,119	1,091	-2.4%	15	15	16	20	+23.5%
SI															
SK															
FI															
SE	510	512	510	506	-0.7%	303	302	297	295	-0.5%	207	210	213	211	-1.0%
EU	28,528	28,256	27,674	27,249	-1.5%	18,727	18,497	18,266	18,031	-1.3%	9,801	9,760	9,409	9,218	-2.0%

Source : EStat Newcronos

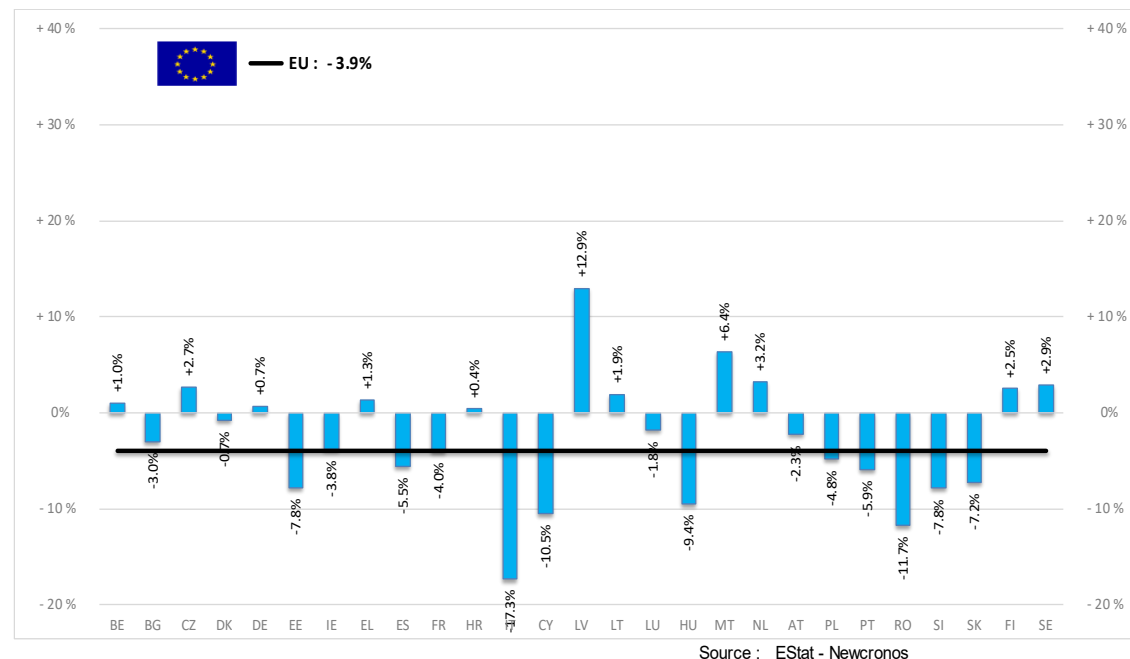
EU %Var is calculated considering only countries available in 2022 AND 2023

PRODUCTION % EVOLUTION

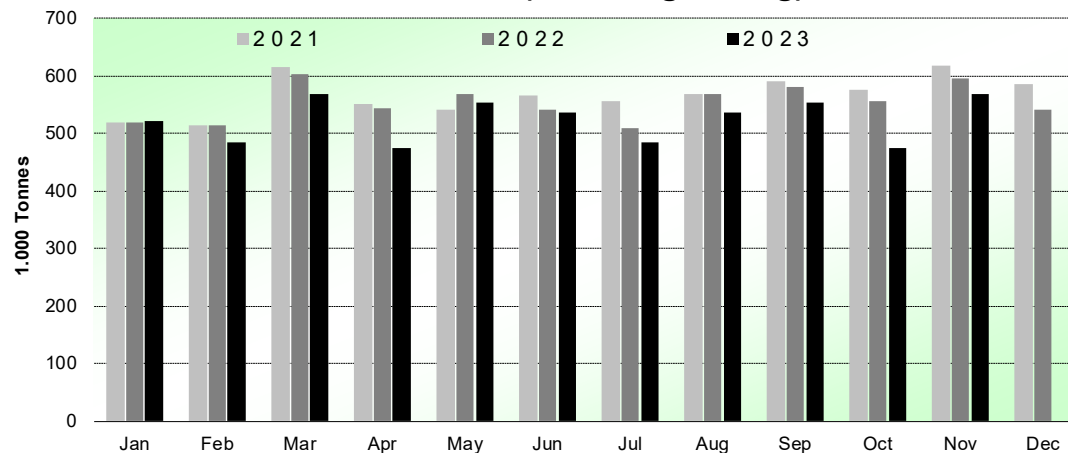
HEADS	Jan-Nov 23/22	TONNES	Jan-Nov 23/22
	EU		EU
Bull	-3.5%	Bull	-3.4%
Bullock	-3.1%	Bullock	-4.0%
Cow	-3.4%	Cow	-3.8%
Heifer	-3.0%	Heifer	-4.6%
Calve	-2.7%	Calve	-3.7%
Young cattle	-4.4%	Young cattle	-5.9%
Meat of bovine animals	-3.3%	Meat of bovine animals	-3.9%

Estimates for last month of period :

Estimates for last month of period :



Beef & Veal Production (EU Slaughtering) - Tonnes



PRICES CARCASSES

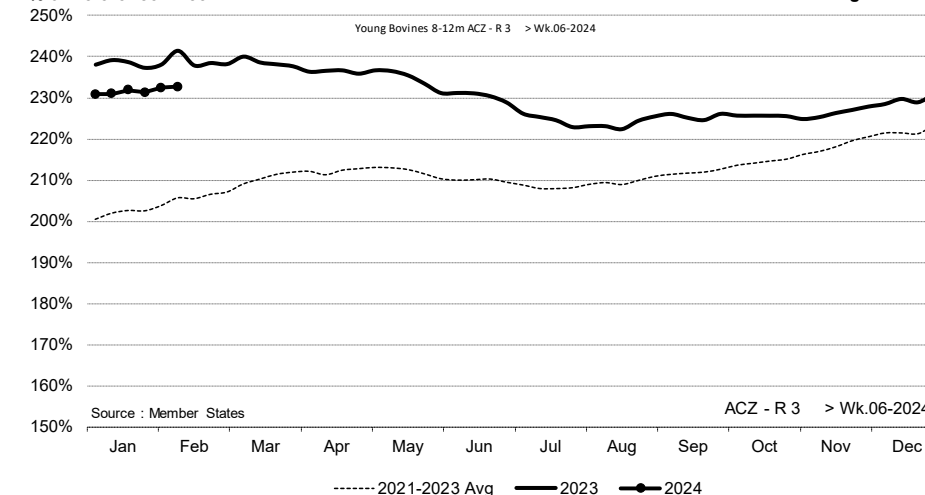
EU Prices week		6	Evolution since last week		Evolution since last month	Evolution since last year
Carcasse	Average A/C/Z-R3	499.3	€/100 kg	+ 0.1%	+ 0.7%	- 3.4%
	Young Bovines (Z)	489.6		+ 0.4%	- 0.2%	- 11.5%
	Young Bulls (A)	496.4		+ 0.0%	+ 0.8%	- 1.4%
	Steers (C)	528.1		- 0.0%	+ 1.7%	- 2.0%
	Cows (D)	395.5		+ 0.6%	+ 2.7%	- 6.5%
	Heifers (E)	510.5		+ 0.4%	+ 0.4%	- 1.5%
Live Animals	Calves slaughtered <8M	625.3	€/head	- 1.1%	- 1.8%	- 5.2%
	Male Calves Dairy Type	93.17		- 0.9%	- 6.0%	- 11.5%
	Male Calves Beef Type	232.7		- 1.8%	+ 1.0%	- 5.1%
	Young Store Cattle	3.29		+ 0.6%	+ 4.5%	+ 2.6%
	Yearling Male Store Cattle	3.42		- 1.9%	+ 1.6%	+ 0.8%
	Yearling Female Store Cattle	2.83		+ 0.2%	+ 2.0%	+ 0.9%

Sources : MSs notifications (Regulation (EU) 1182/2017 and 1184/2017)

EVOLUTION A/C/Z.R3

ACZ - R 3 > Wk.06-2024

% of Reference Price



Price in week 06 : 499.30

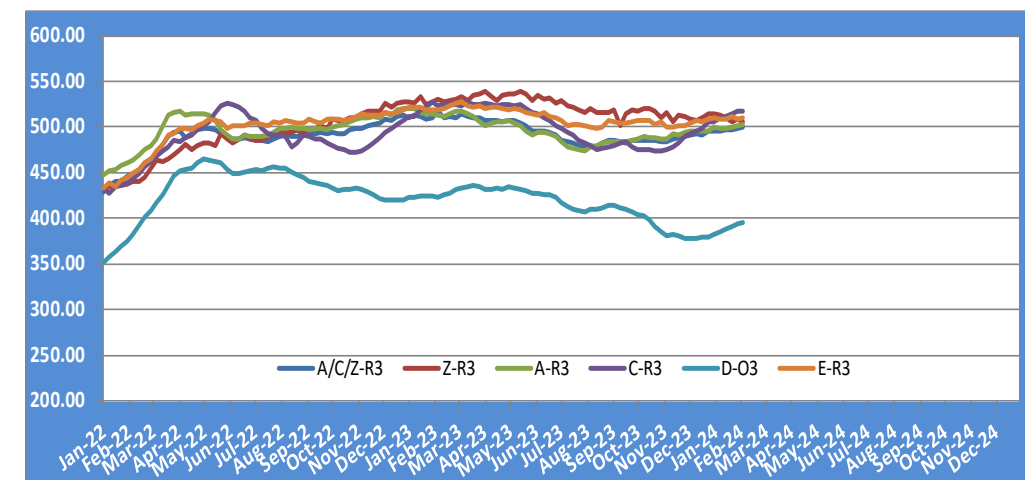
% change y/y : - 3.42%

% Ref. Price in wk 0 : 232.5%

Average price in January 2024 : 496.56

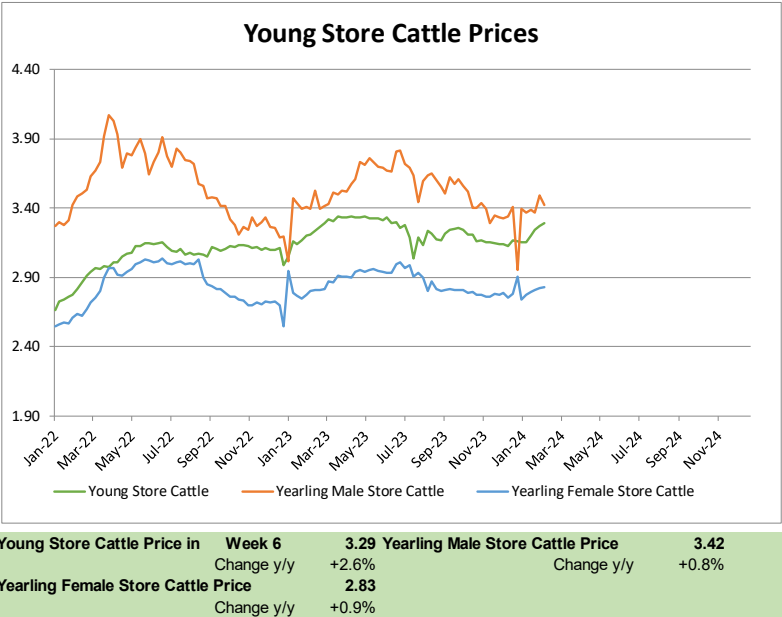
% change y/y : - 2.76%

EU EVOLUTION All CAT GLOBAL VIEW

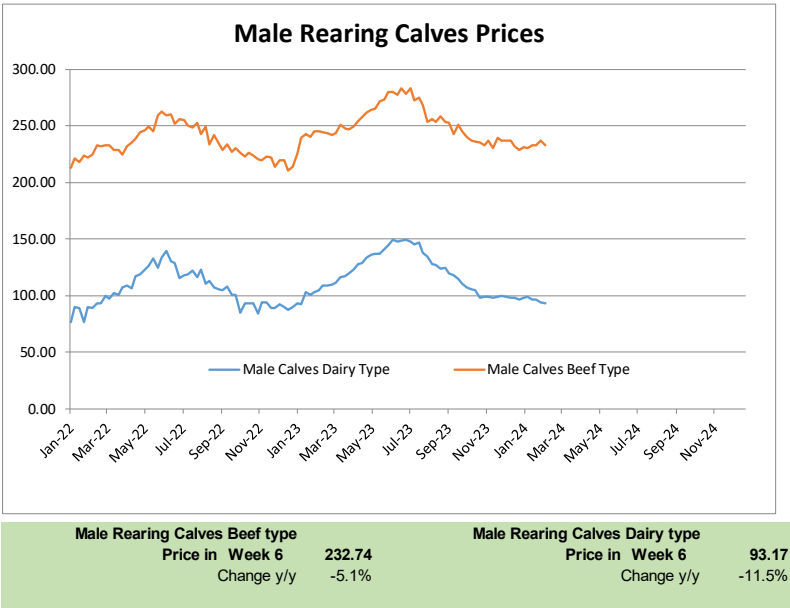


PRICES LIVE BOVINES AND CALVES

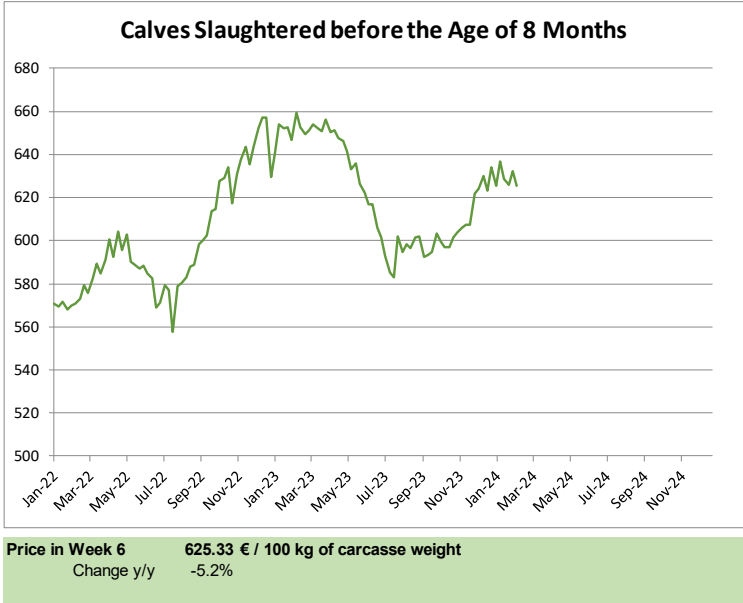
Store cattle (€/100 kg live weight)



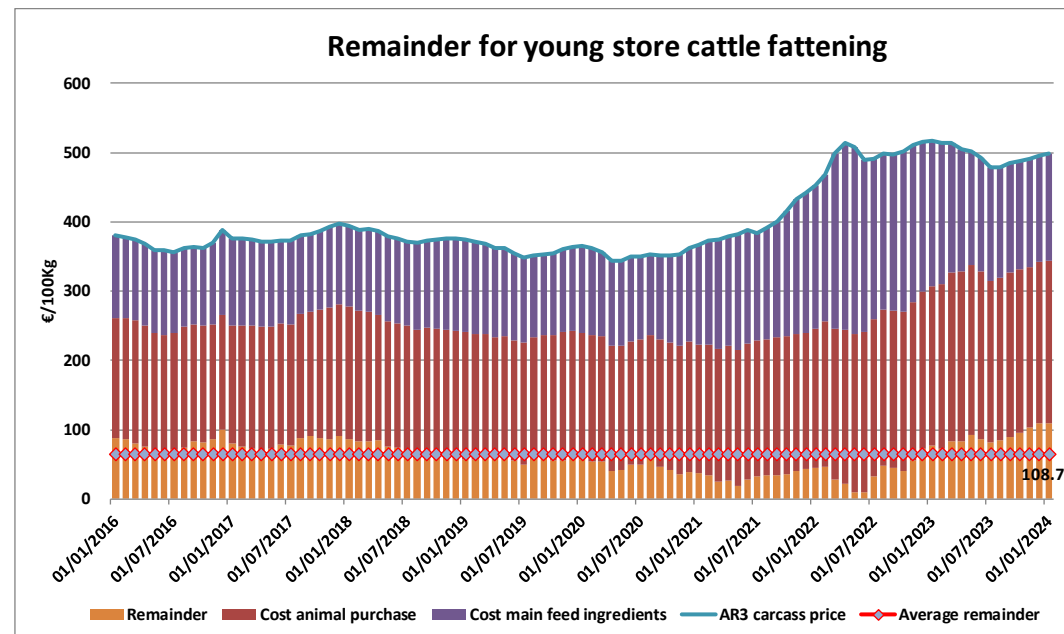
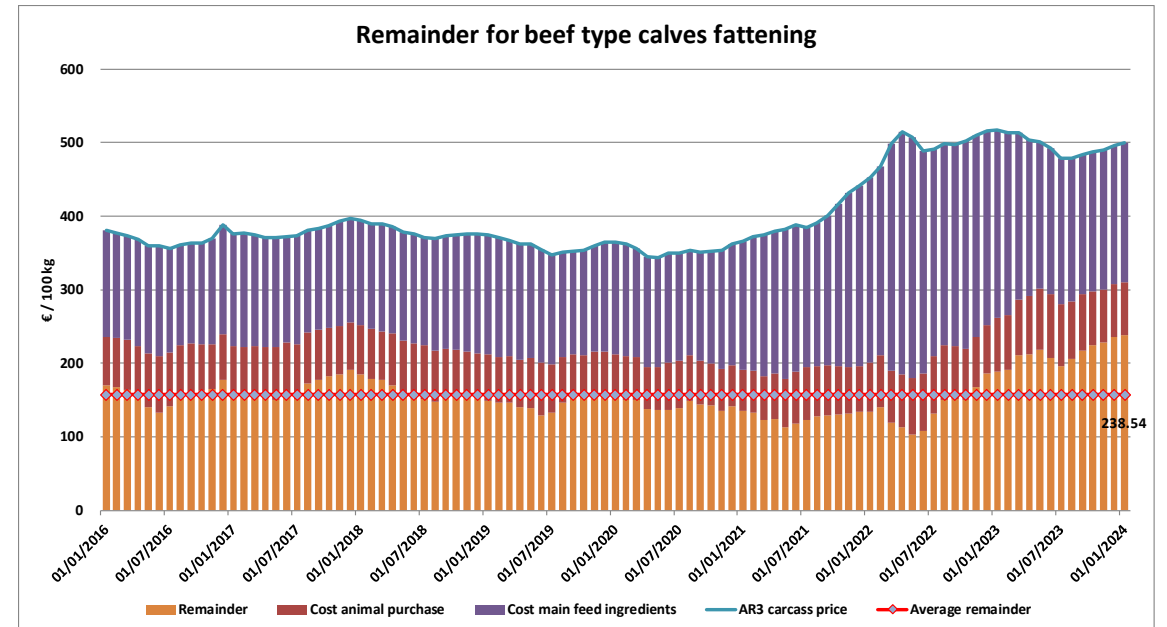
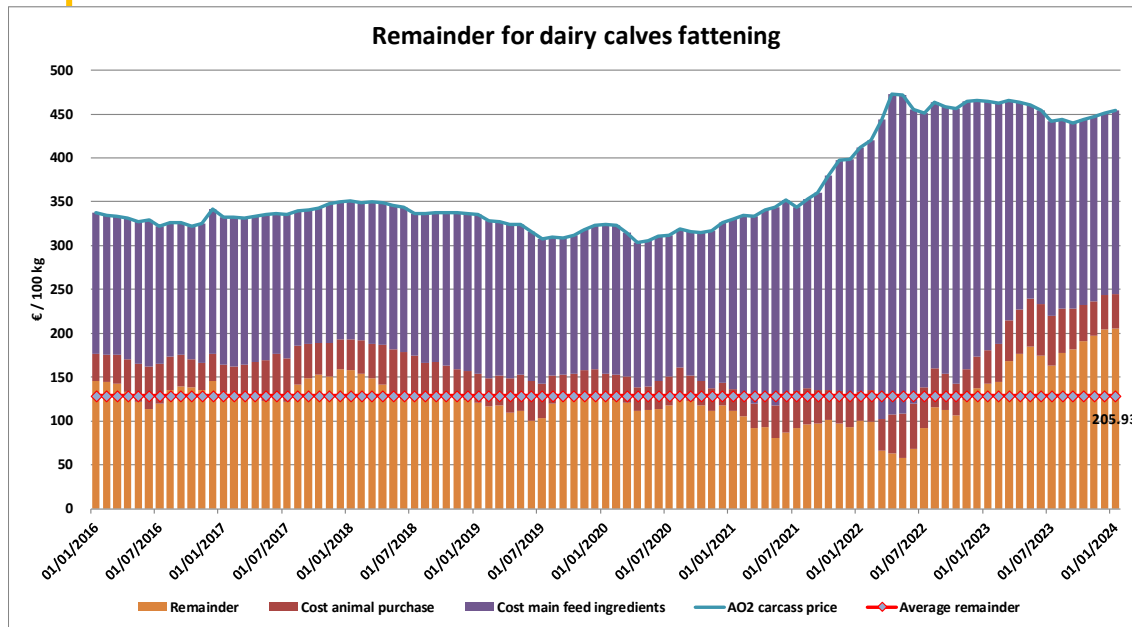
Male calves aged between 8 days and 4 weeks (€/head)



Calves slaughtered less than 8 months (€/100 kg cw)



REMAINDERS



EU Exports of Beef and Live Animals (excluding fats):

In Tons of Carcase Weight

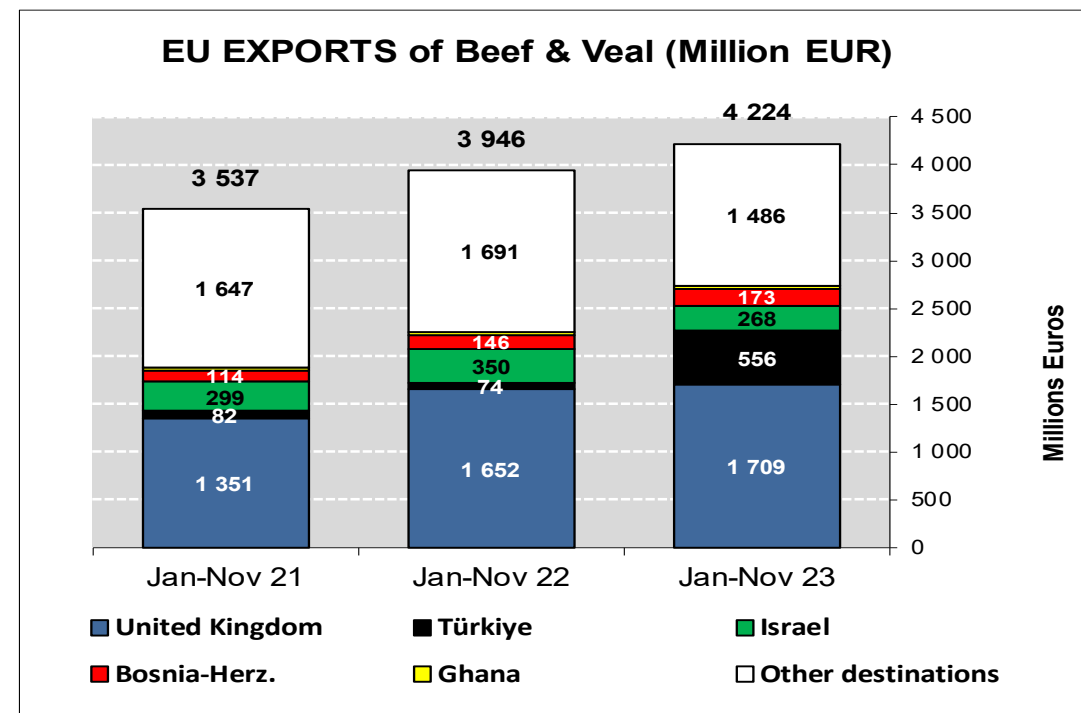
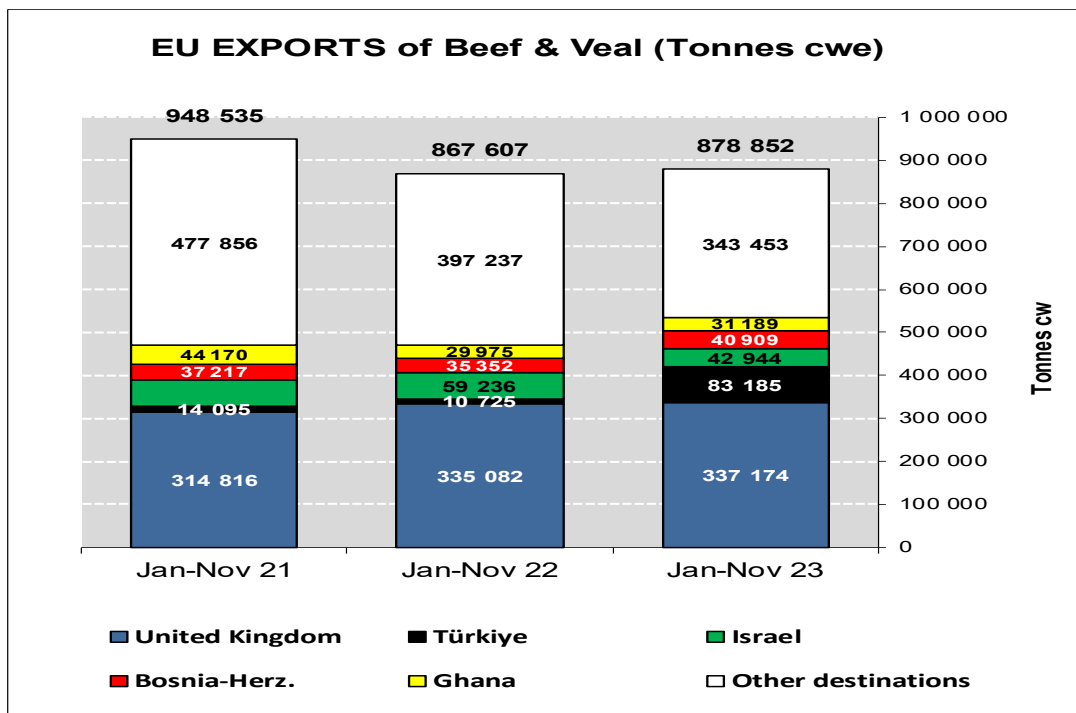
	2021		2022		Jan to Nov 2023		Compared to Jan to Nov 2022
	Tons	% Extra EU	Tons	% Extra EU	Tons	% Extra EU	
United Kingdom	344.633	33,4%	366.330	38,9%	337.174	38,4%	+0,6%
Türkiye	14.953	1,5%	14.168	1,5%	83.185	9,5%	+++
Israel	66.022	6,4%	63.618	6,7%	42.944	4,9%	-27,5%
Bosnia-Herz.	40.504	3,9%	38.796	4,1%	40.909	4,7%	+15,7%
Ghana	47.618	4,6%	32.171	3,4%	31.189	3,5%	+4,0%
Ivory Coast	29.187	2,8%	29.882	3,2%	27.777	3,2%	+0,9%
Morocco	11.868	1,2%	8.273	0,9%	24.743	2,8%	+++
Hong Kong	44.769	4,3%	10.570	1,1%	20.835	2,4%	+++
Kosovo	16.478	1,6%	17.069	1,8%	19.578	2,2%	+29,4%
Lebanon	19.527	1,9%	21.026	2,2%	18.973	2,2%	-7,9%
Switzerland	28.717	2,8%	24.958	2,6%	18.198	2,1%	-22,5%
Other Destinations	366.701	35,6%	315.634	33,5%	213.348	24,3%	-27,1%
Extra-EU	1.030.978		942.495		878.852		+1,3%
% Change				-8,6%			

In Thousand Euros

	2021		2022		Jan to Nov 2023		Compared to Jan to Nov 2022
	1 000 EUR	% Extra EU	1 000 EUR	% Extra EU	1 000 EUR	% Extra EU	
United Kingdom	1.495.332	38,4%	1.813.304	41,9%	1.709.347	40,5%	+3,5%
Türkiye	86.382	2,2%	101.973	2,4%	555.585	13,2%	+++
Israel	328.295	8,4%	377.934	8,7%	267.798	6,3%	-23,4%
Bosnia-Herz.	126.443	3,3%	161.208	3,7%	173.000	4,1%	+18,2%
Ghana	47.987	1,2%	35.528	0,8%	32.398	0,8%	-3,4%
Ivory Coast	25.645	0,7%	25.506	0,6%	23.890	0,6%	+1,6%
Morocco	60.639	1,6%	49.671	1,1%	147.063	3,5%	+++
Hong Kong	118.737	3,1%	33.184	0,8%	43.241	1,0%	+37,8%
Kosovo	43.776	1,1%	60.757	1,4%	80.973	1,9%	+52,1%
Lebanon	80.664	2,1%	110.119	2,5%	104.284	2,5%	-3,3%
Switzerland	171.272	4,4%	188.944	4,4%	138.624	3,3%	-21,2%
Other Destinations	1.304.359	33,5%	1.365.187	31,6%	948.261	22,4%	-24,2%
Extra-EU	3.889.531		4.323.316		4.224.464		+7,0%
% Change				+11,2%			

TRADE

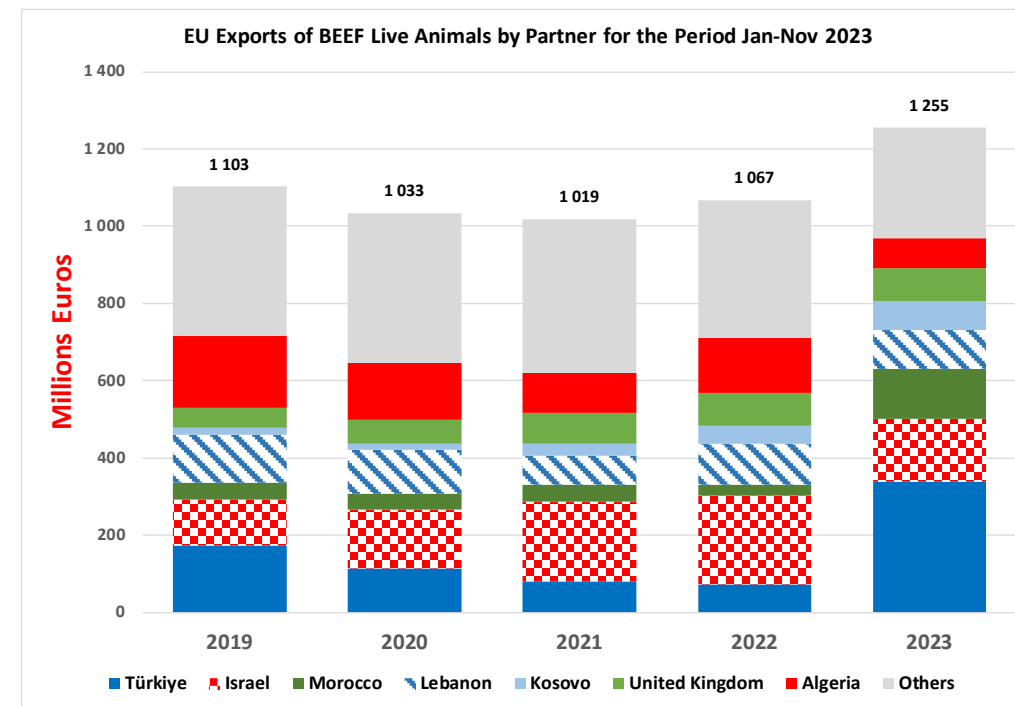
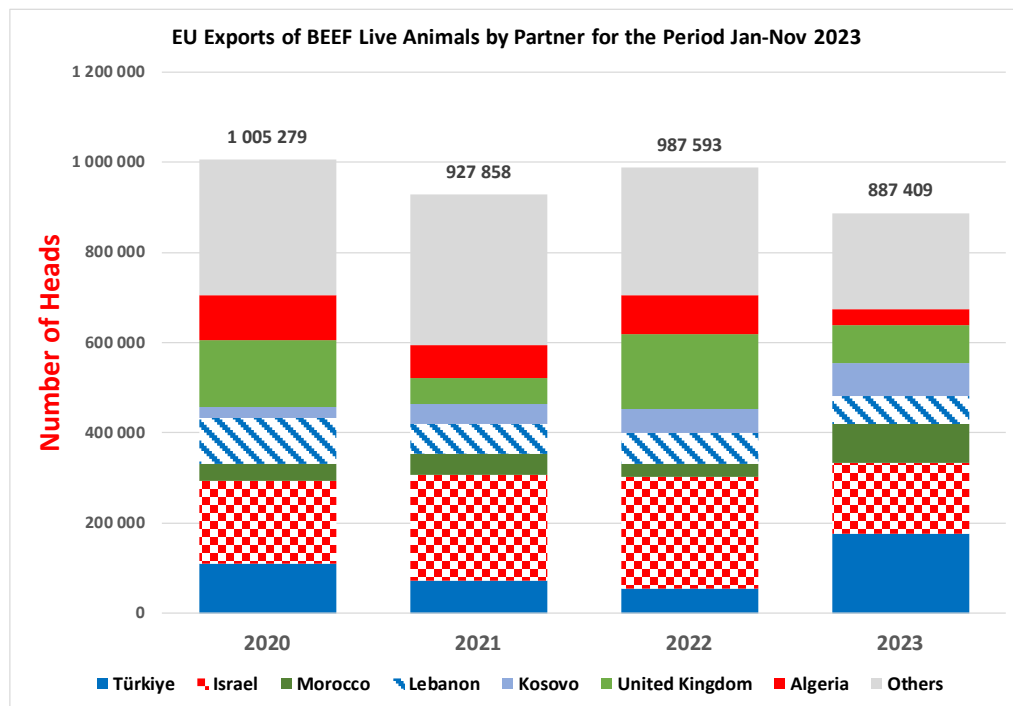
EU EXPORTS Beef & Live Animals



TRADE

EU EXPORTS

Live Animals



EU Imports of Beef and Live Animals (Excl Fats):

In Tons of Carcase Weight

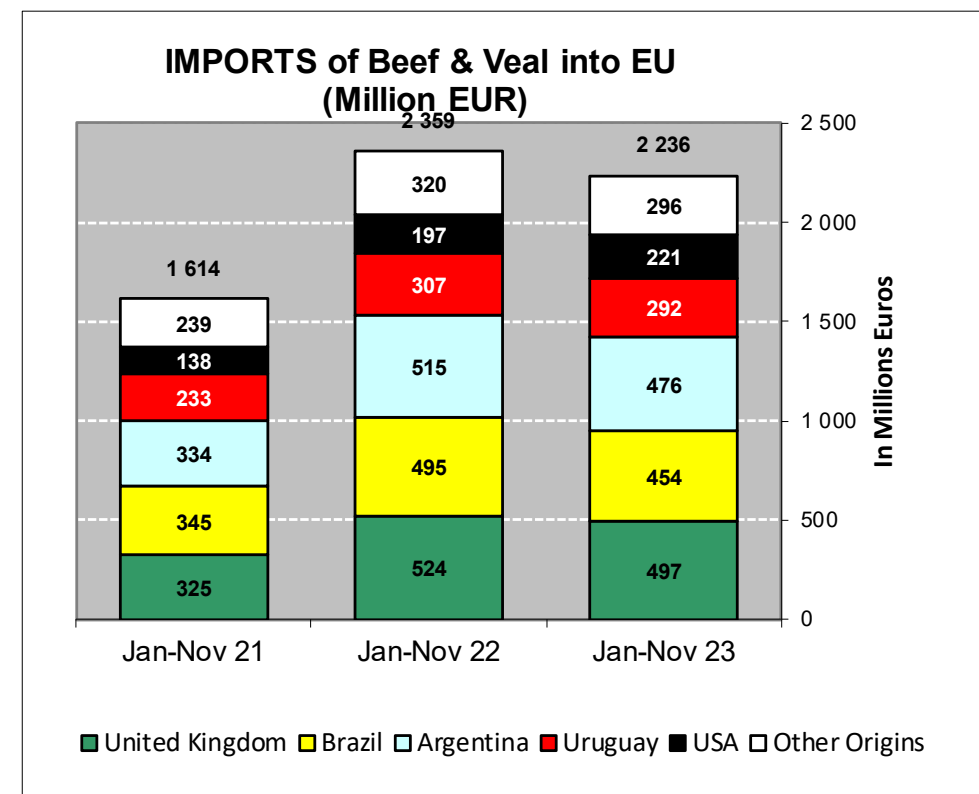
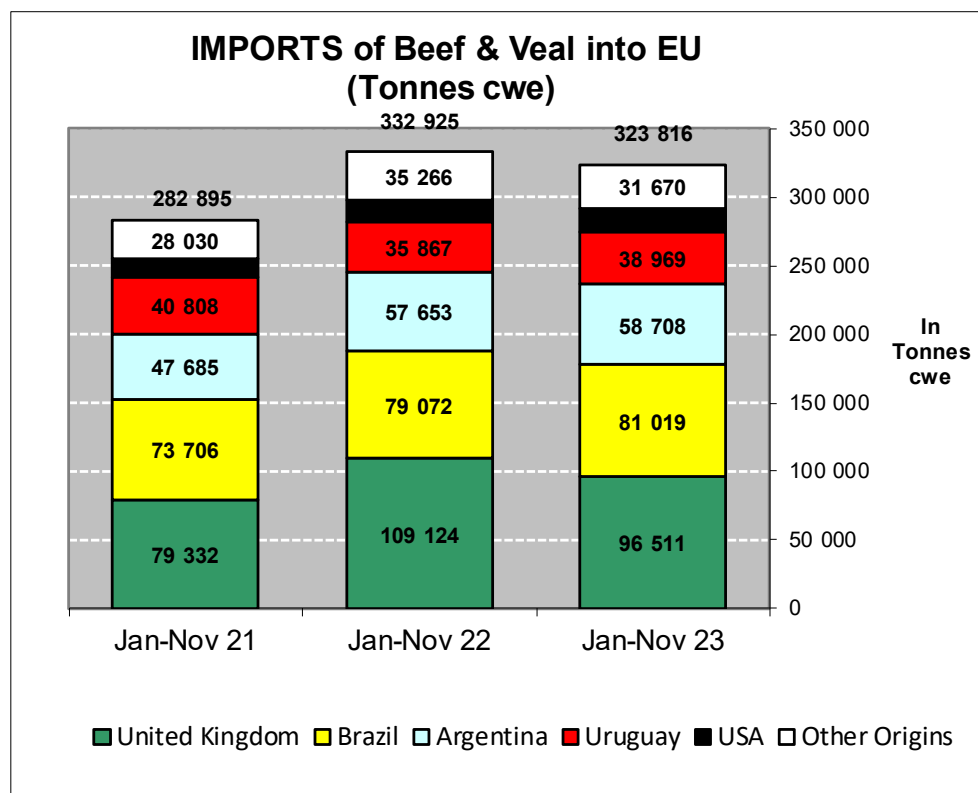
	2021		2022		Jan to Nov 2023		Compared to Jan to Nov 2022
	Tons	% Extra EU	Tons	% Extra EU	Tons	% Extra EU	
United Kingdom	87.599	28,3%	118.767	33,0%	96.511	29,8%	-11,6%
Brazil	81.737	26,4%	86.512	24,0%	81.019	25,0%	+2,5%
Argentina	52.300	16,9%	62.584	17,4%	58.708	18,1%	+1,8%
Uruguay	42.669	13,8%	37.619	10,5%	38.969	12,0%	+8,6%
USA	14.910	4,8%	17.269	4,8%	16.939	5,2%	+6,2%
Australia	8.925	2,9%	8.385	2,3%	7.561	2,3%	-8,1%
Namibia	1.996	0,6%	5.168	1,4%	6.721	2,1%	+41,9%
Paraguay	3.933	1,3%	5.404	1,5%	4.463	1,4%	-12,3%
New Zealand	4.380	1,4%	5.202	1,4%	4.233	1,3%	-14,1%
Switzerland	4.714	1,5%	4.730	1,3%	3.277	1,0%	-23,6%
Canada	1.816	0,6%	2.172	0,6%	1.393	0,4%	-32,5%
Other Destinations	4.290	1,4%	6.173	1,7%	4.022	1,2%	-32,2%
Extra-EU	309.270		359.985		323.816		-2,7%
% Change			+16,4%				

In Thousand Euros

	2021		2022		Jan to Nov 2023		Compared to Jan to Nov 2022
	1 000 EUR	% Extra EU	1 000 EUR	% Extra EU	1 000 EUR	% Extra EU	
United Kingdom	360.516	20,2%	572.017	22,5%	496.719	22,2%	-5,2%
Brazil	387.194	21,7%	542.417	21,3%	453.658	20,3%	-8,4%
Argentina	376.658	21,1%	550.724	21,7%	475.899	21,3%	-7,7%
Uruguay	246.910	13,8%	321.251	12,6%	291.818	13,1%	-5,0%
USA	156.708	8,8%	214.772	8,4%	221.481	9,9%	+12,2%
Australia	90.481	5,1%	101.737	4,0%	88.199	3,9%	-10,7%
Namibia	6.902	0,4%	24.570	1,0%	35.137	1,6%	+57,6%
Paraguay	20.419	1,1%	35.579	1,4%	26.118	1,2%	-22,8%
New Zealand	31.669	1,8%	50.277	2,0%	43.895	2,0%	-6,6%
Switzerland	53.477	3,0%	55.346	2,2%	37.572	1,7%	-24,6%
Canada	18.559	1,0%	21.880	0,9%	18.545	0,8%	-9,2%
Other Destinations	37.331	2,1%	52.847	2,1%	46.968	2,1%	-2,5%
Extra-EU	1.786.824		2.543.417		2.236.009		-5,2%
% Change			+42,3%				

TRADE

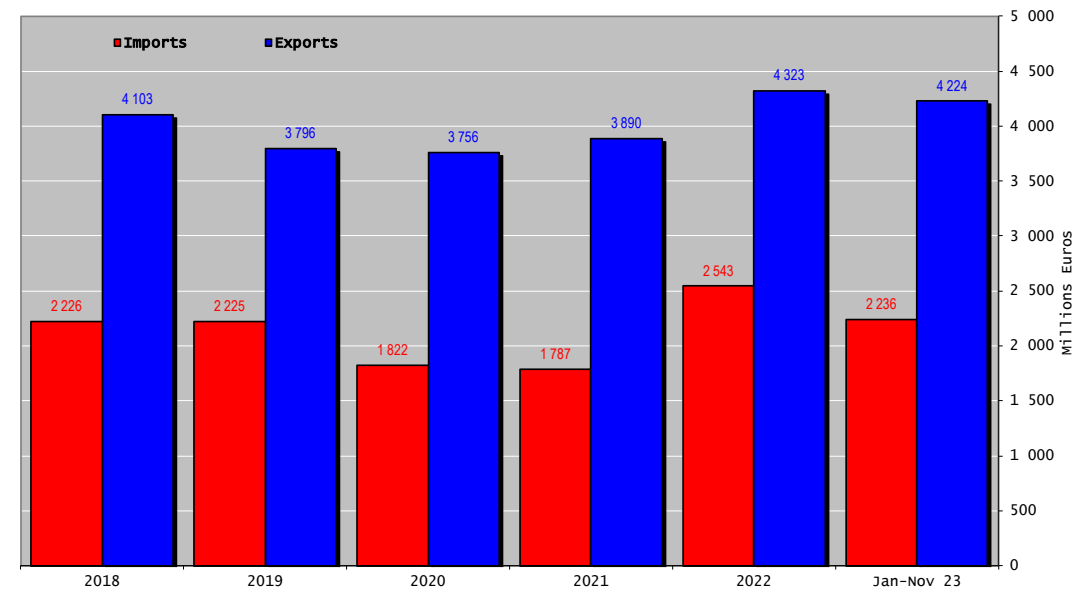
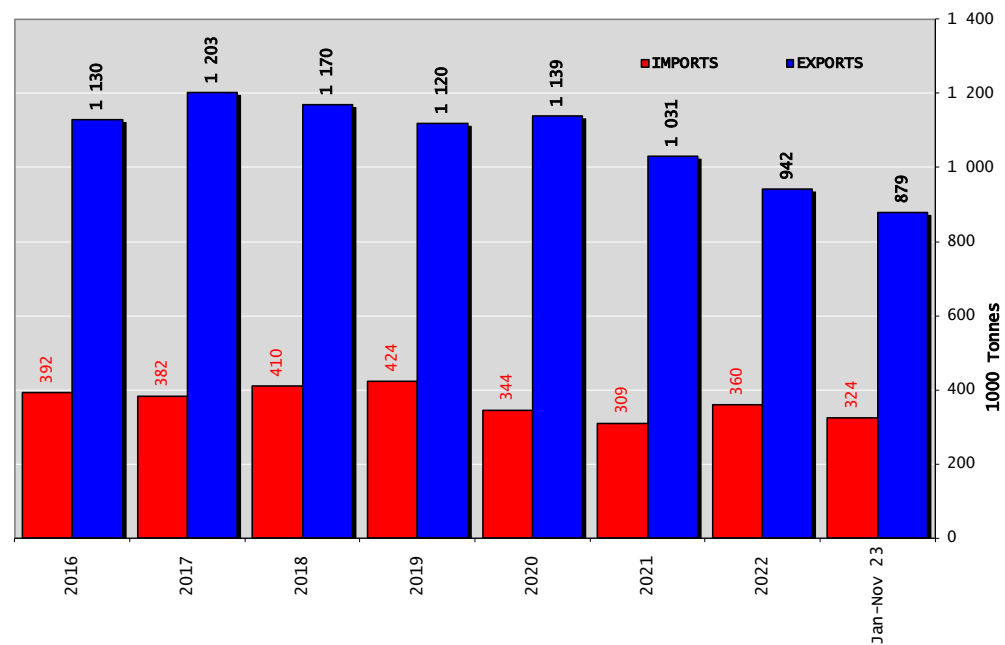
EU IMPORTS Beef & Live Animals



TRADE

EU TRADE BALANCE

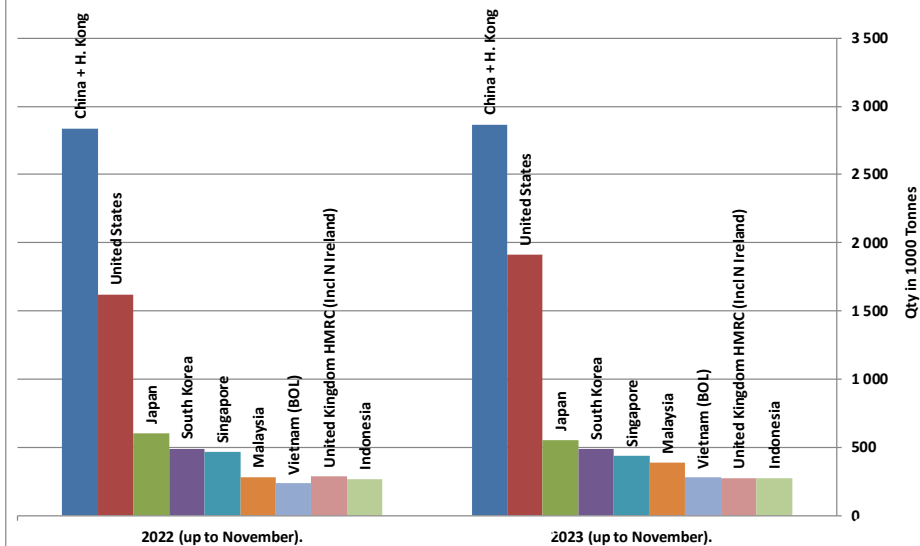
Beef & Live Animals Trade Balance of Beef Products and Live Animals



WORLD BEEF MARKET

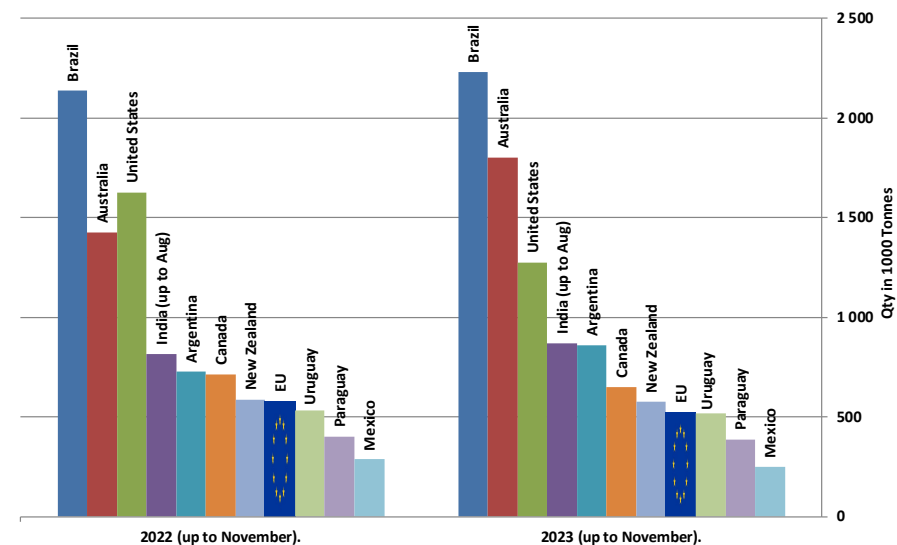
Main Importers of BEEF Products (up to November).

Source : GTA * Excluding live animals (0102), fats, preparations of several types of meat (0209, 0210 99 and 1602 90)

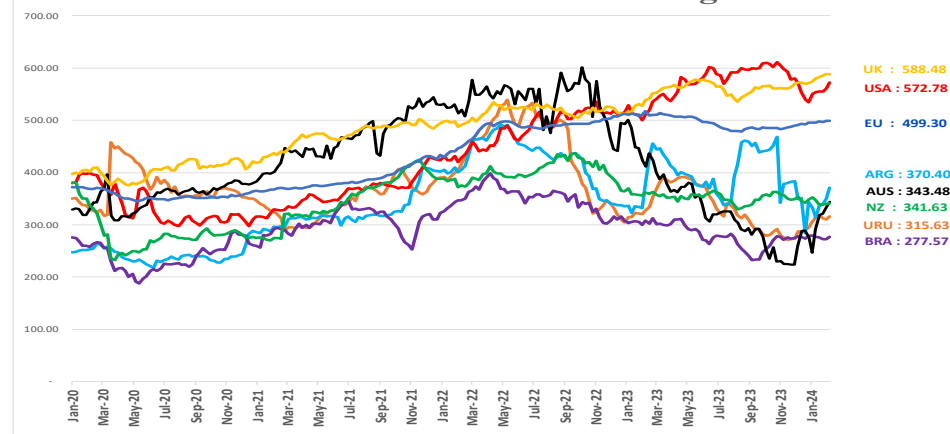


Main Exporters of BEEF Products (up to November).

Source : GTA * Excluding live animals (0102), fats, preparations of several types of meat (0209, 0210 99 and 1602 90)



World Beef Prices in Euros/100 kg carcase



THANK YOU VERY MUCH

More Information at:

EU Market Observatory

https://ec.europa.eu/agriculture/market-observatory/meat_en

And

Agri-FOOD data portal:

<http://agridata.ec.europa.eu/>

Thank you



© European Union 2020

Unless otherwise noted the reuse of this presentation is authorised under the [CC BY 4.0](https://creativecommons.org/licenses/by/4.0/) license. For any use or reproduction of elements that are not owned by the EU, permission may need to be sought directly from the respective right holders.

Slide xx: **element concerned**, source: **e.g. Fotolia.com**; Slide xx: **element concerned**, source: **e.g. iStock.com**

