

The EU school fruit, vegetables and milk scheme



Annual monitoring report

2021/2022 school year

Country: **Germany**

Generated on: **20/06/2023**

Information by the country's competent authorities. The report is sent to, but not approved by, the Commission that may make comments.

Non-mandatory information, nevertheless recommended for the quality of the report, in grey.

Figures on budget execution (31 December 2021) are preliminary: corrections are possible and payments may still be made.

1. Budget execution

1.1. Expenditure for the supply/distribution of products (EUR)

	School fruit and vegetables			School milk			Total	
	Fresh	Processed	Total fruits and vegetables	Drinking milk and lactose-free versions	Cheese, curd, yoghurt and other milk products with no added flavouring, fruit, nuts or cocoa	Milk products with added flavouring, fruit, nuts or cocoa		Total milk and milk products
EU aid	19 022 361	0	19 022 361	5 770 492	1 362 795	0	7 133 287	26 155 648
National Funds	14 018 067	0	14 018 067	2 858 900	988 548	0	3 847 448	17 865 515
<i>of which: Public</i>			0				0	0
<i>of which: Private</i>			0				0	0
Comments	Zu den fakultativen Feldern haben nicht alle BL Angaben gemacht; Anmerkungen von den BL BB, BE, BW; RP,SH	Anmerkungen siehe SL, SN		Zu den fakultativen Feldern haben nicht alle BL Angaben gemacht; Anmerkungen von den BL BB, BE;BW, MV, NW, RP, SL	Zu den fakultativen Feldern haben nicht alle BL Angaben gemacht; Anmerkungen von den BL BW, NW, SN	Anmerkungen von dem BL SN		

1.2. Expenditure for the educational measures (EUR)

	On school fruit and vegetables	On school milk	Total
EU aid	27 065	11 195	38 260
National Funds	328 108	179 631	507 739
<i>of which: Public</i>			
<i>of which: Private</i>			
Comments			

1.3. Expenditure for information, monitoring and evaluation (EUR)

	On school fruit and vegetables	On school milk	Total
EU aid			0
National Funds			0
<i>of which: Public</i>			
<i>of which: Private</i>			
Comments	Nicht alle BL haben hierzu Angaben gemacht; Anmerkungen von den BL BW, NW, SH	Nicht alle BL haben hierzu Angaben gemacht; Anmerkungen von den BL BW, NW	

2.1 Participating children

	Participating children		
	Number of children	Number of children who participated in the school fruit and vegetables part	Number of children who participated in the school milk part
Nurseries/Pre-schools	1 201 776		
<i>Of which: Nurseries</i>	7 116		
<i>Of which: Pre-schools</i>			
Primary schools	1 500 396		
Secondary schools	60 711		
Total	2 762 883		
Comments	<i>Zu den fakultativen Feldern haben nicht alle BL Angaben gemacht; Anmerkungen von den BL BB, BE, BW, BY, NI, NW, RP, SH, SL, SN, ST, TH</i>	<i>Nicht alle BL haben hierzu Angaben gemacht; Anmerkungen von den BL NW, RP, ST</i>	<i>Nicht alle BL haben hierzu Angaben gemacht; Anmerkungen von den BL RP, SH, TH</i>

2.2 Number of children in the target group

	Number of children in the target group set out in the strategy
Nurseries/Pre-schools	
<i>Of which: Nurseries</i>	
<i>Of which: Pre-schools</i>	
Primary schools	
Secondary schools	
Total	
Comments	<i>Nicht alle BL haben hierzu Angaben gemacht; Anmerkungen von den BL NW, SL, TH</i>



2.3 Total number of children

	Number of children eligible for the EU school fruit, vegetables and milk scheme
Nurseries/Pre-schools	
<i>Of which: Nurseries</i>	
<i>Of which: Pre-schools</i>	
Primary schools	
Secondary schools	
Total	
Comments	<i>Nicht alle BL haben hierzu Angaben gemacht; Anmerkungen von den BL NI, NW, SL, TH</i>



3.1 Participating schools

	Participating schools		
	Number of schools	Number of schools that participated in the school fruit and vegetables part	Number of schools that participated in the school milk part
Nurseries/Pre-schools	15 551		
<i>Of which: Nurseries</i>			
<i>Of which: Pre-schools</i>			
Primary schools	8 617		
Secondary schools	264		
Total	24 432		
Comments	<i>Zu den fakultativen Feldern haben nicht alle BL Angaben gemacht; Anmerkungen von den BL BB, BE, BW, BY, NW, RP, SL, SN, TH</i>	<i>Nicht alle BL haben hierzu Angaben gemacht; Anmerkungen von den BL RP, SH</i>	<i>Nicht alle BL haben hierzu Angaben gemacht; Anmerkungen von den BL NW, RP, SH, TH</i>

3.2 Number of schools in the target group

	Number of educational establishments in the target group set out in the strategy
Nurseries/Pre-schools	
<i>Of which: Nurseries</i>	
<i>Of which: Pre-schools</i>	
Primary schools	
Secondary schools	
Total	
Comments	<i>Nicht alle BL haben hierzu Angaben gemacht; Anmerkungen von NW, SL</i>

3.3 Total number of schools

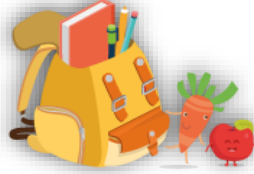
Nurseries/Pre-schools	
<i>Of which: Nurseries</i>	
<i>Of which: Pre-schools</i>	
Primary schools	
Secondary schools	
Total	
Comments	<i>Nicht alle BL haben hierzu Angaben gemacht; Anmerkungen von NI, NW, SL</i>



4.1 Products supplied/distributed to schoolchildren and, if applicable, tasted by schoolchildren as part of educational measures

4.1.1 Fresh fruit

	List
Apples	✓
Apricots	✓
Aromatic Herbs	
Avocados	✓
Bananas	✓
Berries	✓
Cherries	✓
Citrus Fruit	✓
Figs	✓
Grapes	✓
Guavas/Mangoes	✓
Kiwis	✓
Melons	✓
Nuts	
Peaches/Nectarines	✓
Pears	✓
Pineapples	✓
Plums	✓
Quinces	✓
Strawberries	✓
Watermelons	✓
Comments	

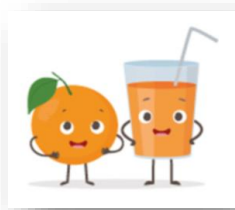


4.1.2 Fresh vegetables

	List
Artichokes	✓
Asparagus	✓
Aubergines	✓
Beet	✓
Broccoli	✓
Cabbages	✓
Carrots	✓
Cauliflowers	✓
Celery	✓
Chicory	✓
Courgettes	✓
Cucumbers	✓
Fennel	✓
Kohlrabi	✓
Kale	✓
Garlic	✓
Gherkins	✓
Leeks	✓
Lettuce	✓
Mushrooms	✓
Onions	✓
Parsnips	✓
Peas	✓
Peppers	✓
Pulses	✓
Pumpkins	✓
Radishes	✓
Rutabagas	✓
Salad beetroot	✓
Salsifis	✓
Spinach	✓
Tomatoes	✓
Turnips	✓
Comments	Anmerkungen von BW, BY

4.1.3 Processed fruit and vegetables

	List
Fruit Juices	
Fruit Purées/Compotes	
Jams/Marmalades	
Dried Fruits	
Vegetable Juices	
Vegetables Soups	
Other:	
Comments	Anmerkungen von dem BL SL



4.1.4 Milk and milk products

	List
Drinking milk or lactose-free versions	✓
Cheese and curd	✓
Plain yoghurt	✓
Milk products without added sugar, flavouring, fruit, nuts or cocoa	✓
Milk products without fruit juice, naturally flavoured	
Milk products with fruit juice, naturally flavoured or non-flavoured	
Milk-based drinks with cocoa, with fruit juice or naturally flavoured	
Fermented or non-fermented milk products with fruit, naturally flavoured or non-flavoured	
Comments	Anmerkungen von den BL BB, BE, SL



4.1.5 Other agricultural products that children tasted as part of educational measures

	List
Table olives	
Olive oil	
Honey	
Other:	
Comments	



4.1.a) Priorities for the choice of school fruit, vegetables and milk

	Yes/No	Comments
Local/regional purchasing	Yes	Nicht alle BL haben hierzu Angaben
Organic products	Yes	Nicht alle BL haben hierzu Angaben
Short supply chains	Yes	
Quality schemes	Yes	Nicht alle BL haben hierzu Angaben
Fair trade	Yes	Nicht alle BL haben hierzu Angaben
Other:	Yes	Nicht alle BL haben hierzu Angaben

4.2 Average size of portion of school fruit, vegetables and milk (Kg/Lt)

	School fruit and vegetables	School milk
Kg	0.10	0.13
Liters	0.00	0.23
Comments	Anmerkungen von den BL BB, BE, HB, MV, NI, RP	Anmerkungen von den BL BB, BE, BW, BY, HB, NI, NW, RP, SN

4.3 Average cost of portion of school fruit, vegetables and milk (EUR)

	School fruit and vegetables	School milk
EU aid	0.33	0.31
National aid (private/public)		
Comments	<i>Zeile 1: Anmerkungen von den BL BB, BE, BY, BW, HB, NI, RP, SH, SL, ST; Zeile 2: Zu den fakultativen Feldern haben nicht alle BL Angaben gemacht; Anmerkungen zu fakultativen Angaben von BY</i>	<i>Zeile1: Anmerkungen von den BL BB, BE, BW, BY, HB, HE, NI, NW, RP, SH, SN, ST; Zeile 2: Zu den fakultativen Feldern haben nicht alle BL Angaben gemacht; Anmerkungen zu fakultativen Angaben von BY</i>

4.3.a Average cost of portion of apples in bulk (EUR)

	Portion of apples in bulk
EU aid	
National aid (private/public)	
Comments	<i>Nicht alle BL haben hierzu Angaben gemacht; Anmerkung von den BL NW, SL</i>

4.3.b Average cost of portion of drinking milk (EUR)

	Portion of drinking milk
EU aid	
National aid (private/public)	
Comments	<i>Nicht alle BL haben hierzu Angaben gemacht; Anmerkung von BL NW</i>



4.4. Frequency of supply/distribution of school fruit, vegetables and milk

	School fruit and vegetables	School milk
Once per week		
Twice per week		
Three times per week		
Four times per week		
Daily		
Other:	✓	✓
Comments	<i>siehe Berichte der BL; Anmerkungen von den BL BB, BE, BY, HB, HE, NI, RP, TH</i>	<i>Siehe Berichte der BL; Anmerkungen von den BL BB, BE, BY, HB, HE, NI, SL, TH</i>

4.5. Duration of supply/distribution of fruit, vegetables and milk

	School fruit and vegetables	School milk
≤ 2 weeks		
> 2 and ≤ 4 weeks		
> 4 and ≤ 12 weeks		
> 12 and ≤ 24 weeks		
> 24 and ≤ 36 weeks		
Entire school year		
Other: please specify under comments	✓	✓
Comments	<i>Siehe Berichte der BL; nicht alle BL haben hierzu Angaben gemacht; Anmerkungen von den BL HB, NI, NW, RP, SN, TH;</i>	<i>Siehe Berichte der BL; nicht alle BL haben hierzu Angaben gemacht; Anmerkungen von den BL HB, HE, NI, NW, RP, SN, TH</i>

4.5.a. Supplied/distributed portions

	School fruit and vegetables	School milk
Number of portions supplied/distributed per child	46	39
Comments	<i>Anmerkungen von den BL BB, BE, BW, HB, NI, NW, RP, SH, SN, ST, TH</i>	<i>Anmerkungen von den BL BB, BE, BW, HB, HE, NI, NW, RP, SH, SL, SN, ST, TH</i>

4.6. Quantities of school fruit, vegetables and milk supplied/distributed and, if applicable, of other agricultural products that children tasted under educational measures

4.6.1 Fresh fruit and vegetables

		Quantity	Of which organic products	Comments
Fresh fruit and vegetables	Quantity in kg	7 141 654		Anmerkungen von den BL BW, BY, MV, RP, SH, TH; Spalte 2 nicht alle BL haben hierzu Angaben gemacht
Of which: Fruit	Quantity in kg			Nicht alle BL haben hierzu Angaben gemacht; Anmerkungen von dem BL TH
Of which: Vegetables	Quantity in kg			Nicht alle BL haben hierzu Angaben gemacht; Anmerkungen von dem BL TH

4.6.2 Processed fruit and vegetables

		Quantity	Of which organic products	Comments
Processed fruit and vegetables	Quantity in kg	0	0	
	Quantity in litres	0	0	
Of which: Fruit juices	Quantity in litres	0	0	
Of which: Fruit purees/compotes	Quantity in kg	0	0	
Of which: Jams/Marmalades	Quantity in kg	0	0	
Of which: Dried fruits	Quantity in kg	0	0	
Of which: Vegetable juices	Quantity in litres	0	0	
Of which: Vegetable soups	Quantity in litres	0	0	
Of which: Other	Quantity in kg	0	0	

4.6.3 Milk and milk products

		Quantity	Of which organic products	Comments
Drinking milk and lactose-free versions	Quantity in litres	6 329 142		Anmerkungen von den BL BB, BE, BW, BY, HE, MV, NW, RP, SH, TH
Cheese and curd	Quantity in kg	86 527		Anmerkungen von BW
Plain yoghurt	Quantity in kg	525 921		Anmerkungen von den BL BW, NW
Milk products without added sugar, flavouring, fruit, nuts or cocoa	Quantity in kg	699		
	Quantity in litres	0		
Milk products without fruit juice, naturally flavoured	Quantity in kg	0		
Milk products with fruit juice, naturally flavoured or non-flavoured	Quantity in kg	0		
Milk-based drinks with cocoa, with fruit juice or naturally flavoured	Quantity in litres	0		
Milk products with fruit, naturally flavoured or non-flavoured	Quantity in kg	0		

4.6.4 Other agricultural products

		Quantity	Of which organic products	Comments
Olive/olive oil	Quantity in kg	0	0	
	Quantity in litres	0	0	
Honey	Quantity in kg	0	0	
Others:	Quantity in kg	0	0	

5.1 Educational measures carried out

		Number of schoolchildren	Comments
Type of measure	School gardens	403 154	Anmerkungen von den BL BY, HB, NI, RP, ST, TH
	Visits to farms, dairies, famers' markets and similar activities	325 137	Anmerkungen von den BL BY, HB, NI, ST, TH
	Tasting classes, cooking workshops, other	677 550	Anmerkungen von den BL BY, HB, NI, TH
	Lessons, lectures, workshops	2 036 536	Anmerkungen von den BL BB, BY, HB, NI, NW, ST, TH
	Other activities: competitions, games, themed periods ...	707 181	Anmerkungen von den BL BB, BE, BW, HB, HE, NI, SL, ST, TH

5.2 Theme(s) of the educational measures carried out

		Yes/No	Comments
Theme(s)	Reconnection of children to agriculture	Yes	Nicht alle BL haben hierzu Angaben gemacht; Anmerkungen von den BL HB, NI, RP
	Healthy eating habits	Yes	Nicht alle BL haben hierzu Angaben gemacht; Anmerkungen von den BL HB, NI, RP
	Local food chains	Yes	Nicht alle BL haben hierzu Angaben gemacht; Anmerkungen von den BL HB, NI, RP
	Organic	Yes	Nicht alle BL haben hierzu Angaben gemacht; Anmerkungen von den BL RP
	Sustainable production	Yes	Nicht alle BL haben hierzu Angaben gemacht; Anmerkungen von den BL RP
	Food waste	Yes	Nicht alle BL haben hierzu Angaben gemacht; Anmerkungen von den BL HB, NI, RP
	Other: please specify under comments	Yes	Nicht alle BL haben hierzu Angaben gemacht; Anmerkungen von den BL BW, HB, NI



6. Communication activities carried out

		Yes/No	Comments
Activity carried out/tool used	Poster at school premises	Yes	Anmerkungen der BL BB, BE, BW, HB, HE, MV, NI, RP, SN, TH
	Poster at other relevant places	Yes	Anmerkungen der BL NW
	Dedicated website(s)	Yes	Anmerkungen der BL BB, BE, BW, BY, HB, HE, NI, NW, RP, SH, SL, SN, TH
	Informative graphic material	Yes	Anmerkungen der BL BB, BE, BW, BY, HB, HE, NI, NW, RP, SH, SL, SN, TH
	Information and awareness campaign (TV, radio, social media)	Yes	Anmerkungen der BL SH, SL
	Others (e.g. networking activities)	Yes	Anmerkungen der BL BB, BE, HE, SH, ST



7. Authorities and stakeholders involved

		Name	Involved in Planning	Involved in Implementation	Involved in Monitoring	Involved in Evaluation	Responsible for implementation / supervision / advice (if yes, please specify for which of those under comments)	Member of Steering / Consultative or Coordination / Monitoring Committee (if yes, please specify which committee or group under comments)	Participation in regular meetings	Events (conferences/seminars, workshops ...) (if yes, please specify which event/s under comments)	Surveys or other information / communication activities, including through web and social media (if yes, please specify which activity/ies under comments)	Other (if yes, please specify under comments)	Comments	
Public authority/ Private stakeholder	Agriculture	Authority	siehe Berichte der BL	Yes	Yes	Yes	Yes	Yes	Yes	Yes	Yes	Yes	Ja/Nein: Siehe Berichte der BL; Anmerkungen von allen BL bis auf HB	
		Stakeholder	siehe Berichte der BL	Yes	Yes	Yes	Yes	Yes	Yes	Yes	Yes	Yes	Yes	Ja/Nein: Siehe Berichte der BL; Anmerkungen von den BL BB, BE, HB, HE, NI, NW, SH, SL, SN, ST, TH
	Health and Nutrition	Authority	siehe Berichte der BL	Yes	Yes	Yes	Yes	Yes	Yes	Yes	Yes	Yes	Yes	Ja/Nein: Siehe Berichte der BL; Anmerkungen von den BL BW, BY, HE, NI, NW, RP, SH, ST, TH
		Stakeholder	siehe Berichte der BL	Yes	Yes	Yes	Yes	Yes	Yes	Yes	Yes	Yes	Yes	Ja/Nein: Siehe Berichte der BL; Anmerkungen von den BL BB, HB, NW, SH, SL, ST, TH
	Education	Authority	siehe Berichte der BL	Yes	Yes	Yes	Yes	Yes	Yes	Yes	Yes	Yes	Yes	Ja/Nein: Siehe Berichte der BL; Anmerkungen von den BL BB, BE, BW, BY, HB, MV, NI, NW, RP, SH, SL, SN, ST, TH
		Stakeholder	siehe Berichte der BL	Yes	Yes	Yes	Yes	Yes	Yes	Yes	Yes	Yes	Yes	Ja/Nein: Siehe Berichte der BL; Anmerkungen von den BL BB, BE, BW, BY, HB, MV, NI, NW, RP, SH, SL, SN, ST, TH
	Other	Authority	siehe Berichte der BL	Yes	Yes	Yes	Yes	Yes	Yes	Yes	Yes	Yes	Yes	Ja/Nein: Siehe Berichte der BL; Anmerkungen von den BL BB, BE, BW, BY, HB, HE, TH
		Stakeholder	siehe Berichte der BL	Yes	Yes	Yes	Yes	Yes	Yes	Yes	Yes	Yes	Yes	Ja/Nein: Siehe Berichte der BL; Anmerkungen von den BL HE, RP, SH, SN, TH