



# **Animal Feed Market Situation**

## **Civil Dialogue Group on Animal Products Pig Meat Sector**

***14 November 2019***

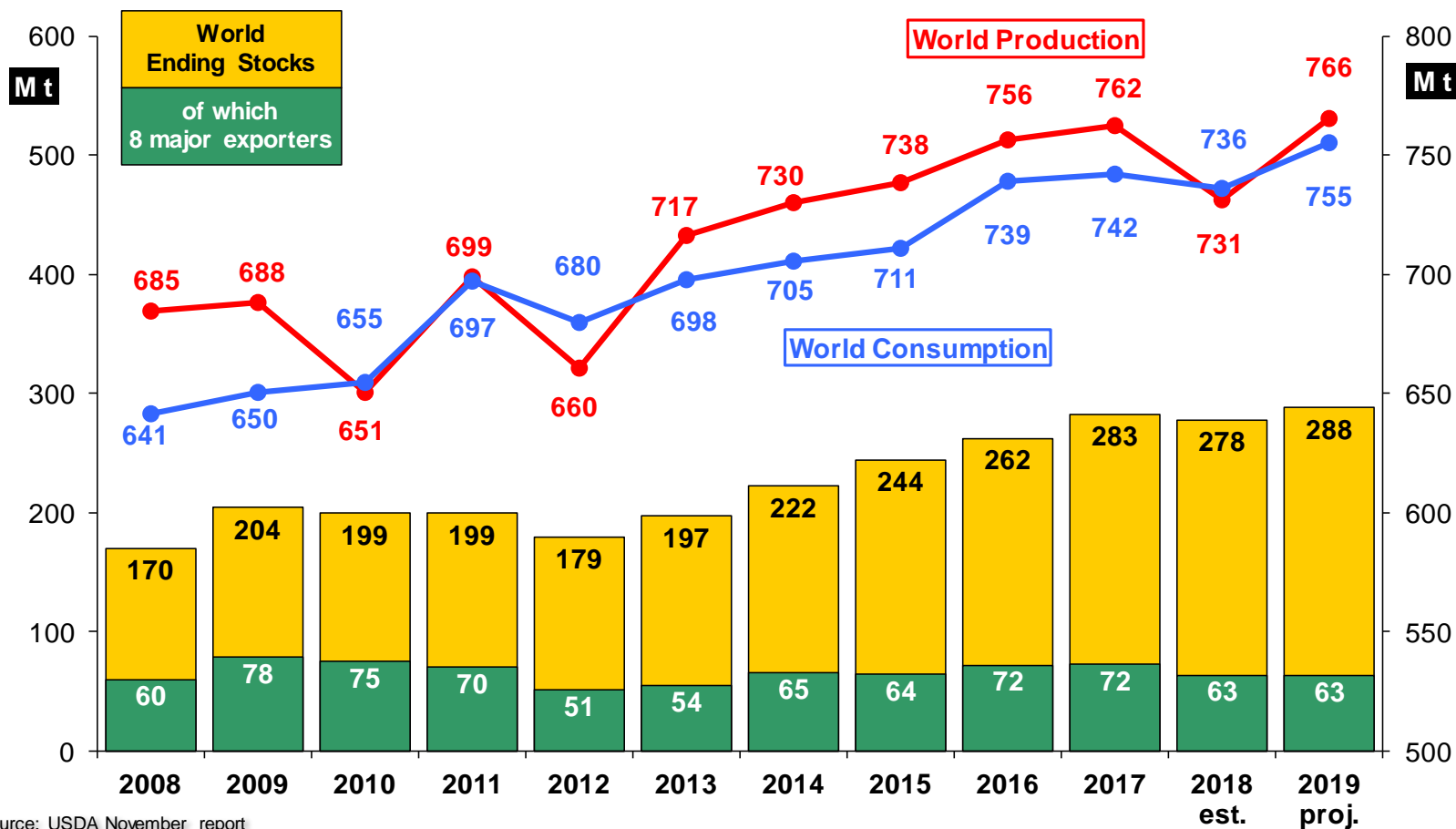
**DG AGRI G.4.**

# World Cereals Forecasts and Prices



European  
Commission

## World wheat: USDA



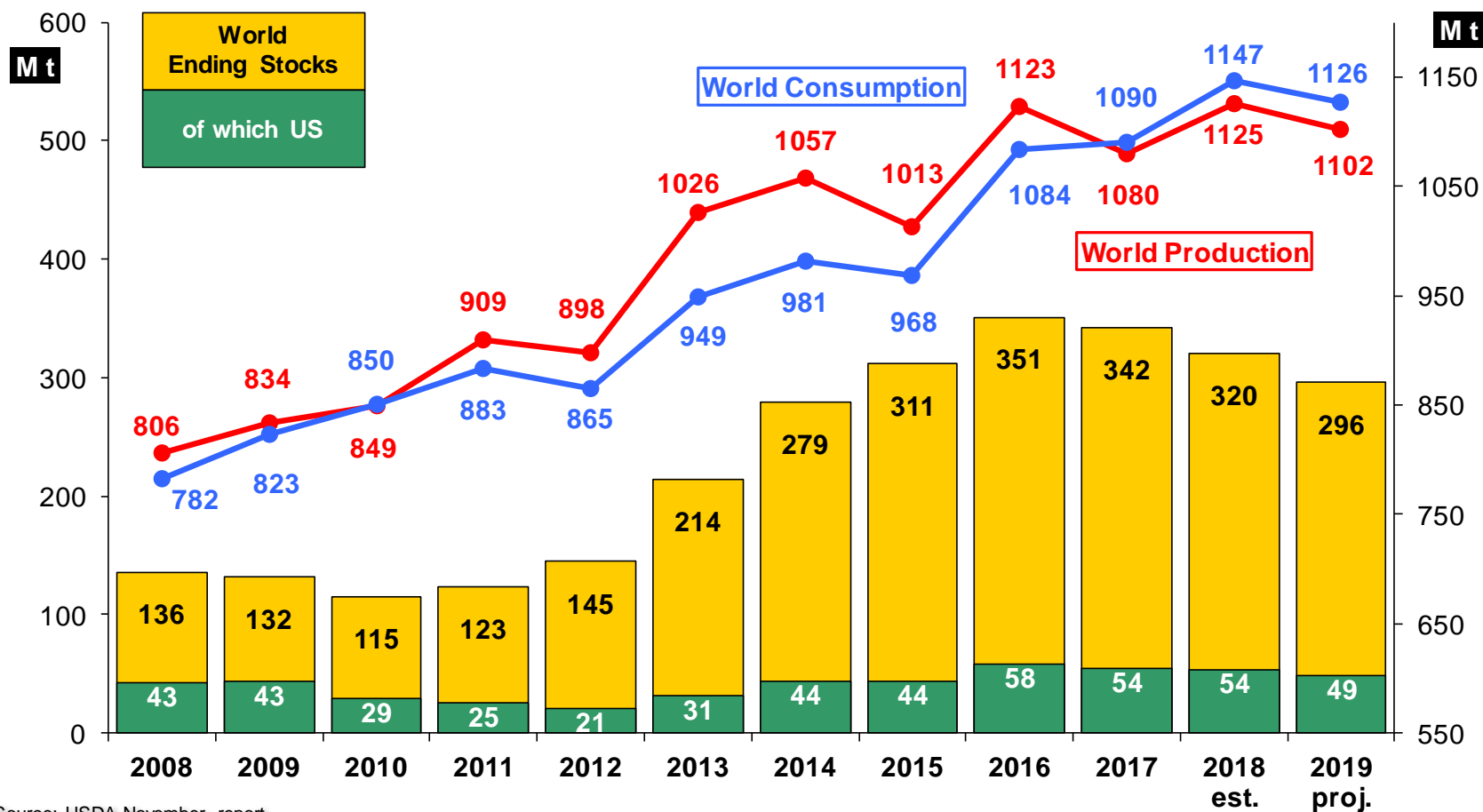
Source: USDA November report

## USDA 2019/20 Supply and Demand Estimates (WASDE – 594 of 8 November 2019)

**Wheat production forecasts in selected countries** (*all wheat; million tonnes*)

	2019/20	Share of total	2018/19	y/y change (%)
<b>EU-28</b>	<b>153.0</b>	20.0%	136.9	+11.8%
<b>USA</b>	<b>52.3</b>	6.8%	51.3	+1.9%
<b>Canada</b>	<b>33.0</b>	4.3%	32.2	+2.5%
<b>Russia</b>	<b>74.0</b>	9.7%	71.7	+3.2%
<b>Ukraine</b>	<b>29.0</b>	3.8%	25.1	+15.7%
<b>Australia</b>	<b>17.2</b>	2.2%	17.3	-0.6%
<b>Argentina</b>	<b>20.0</b>	2.6%	19.5	+2.6%
<b>China</b>	<b>132.0</b>	17.2%	131.4	+0.4%
<b>India</b>	<b>102.2</b>	13.3%	99.9	+2.3%
<b>World</b>	<b>765.6</b>	<b>100.0%</b>	<b>731.3</b>	<b>+4.7%</b>

## World maize: USDA



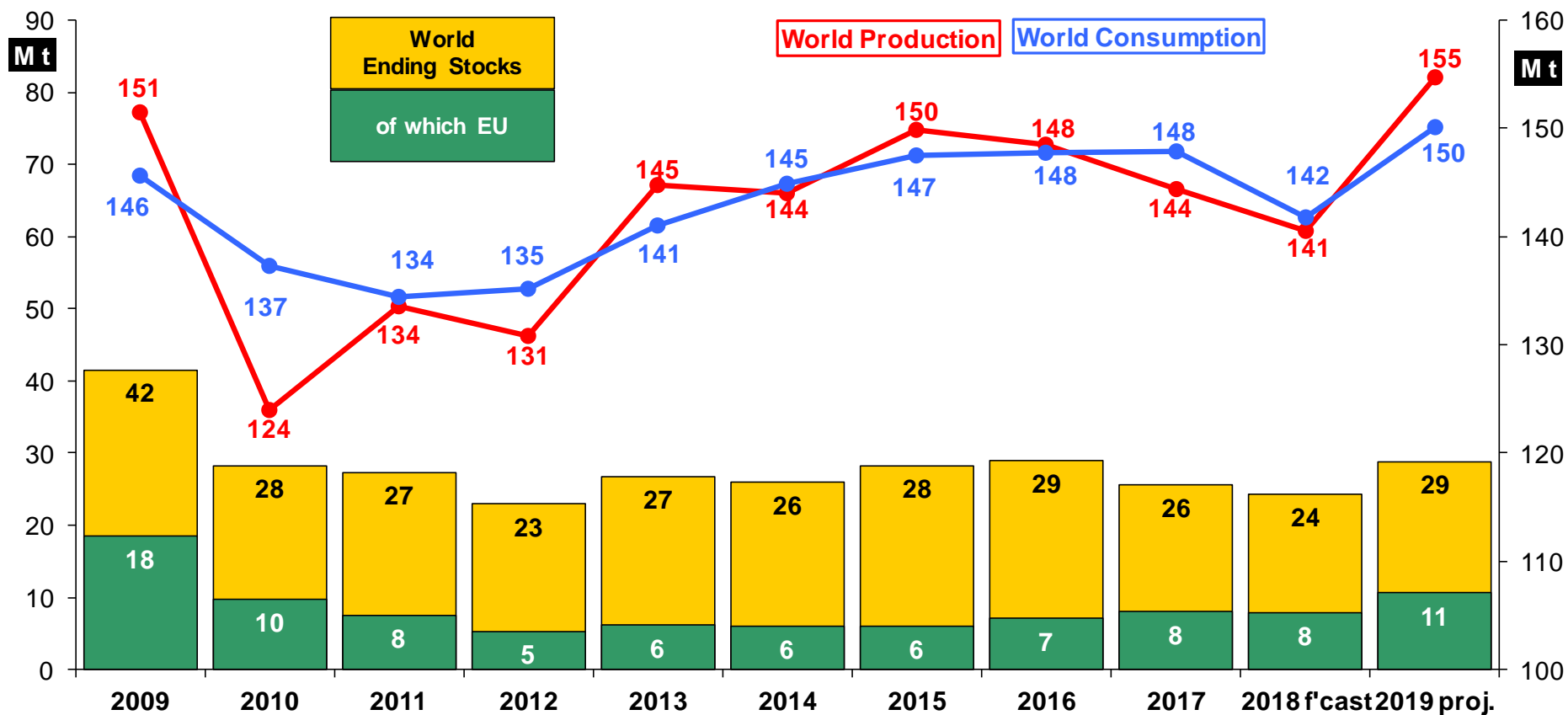
Source: USDA November report

## USDA 2019/20 Supply and Demand Estimates (WASDE – 594 of 8 November 2019)

### Maize production forecasts in selected countries (*million tonnes*)

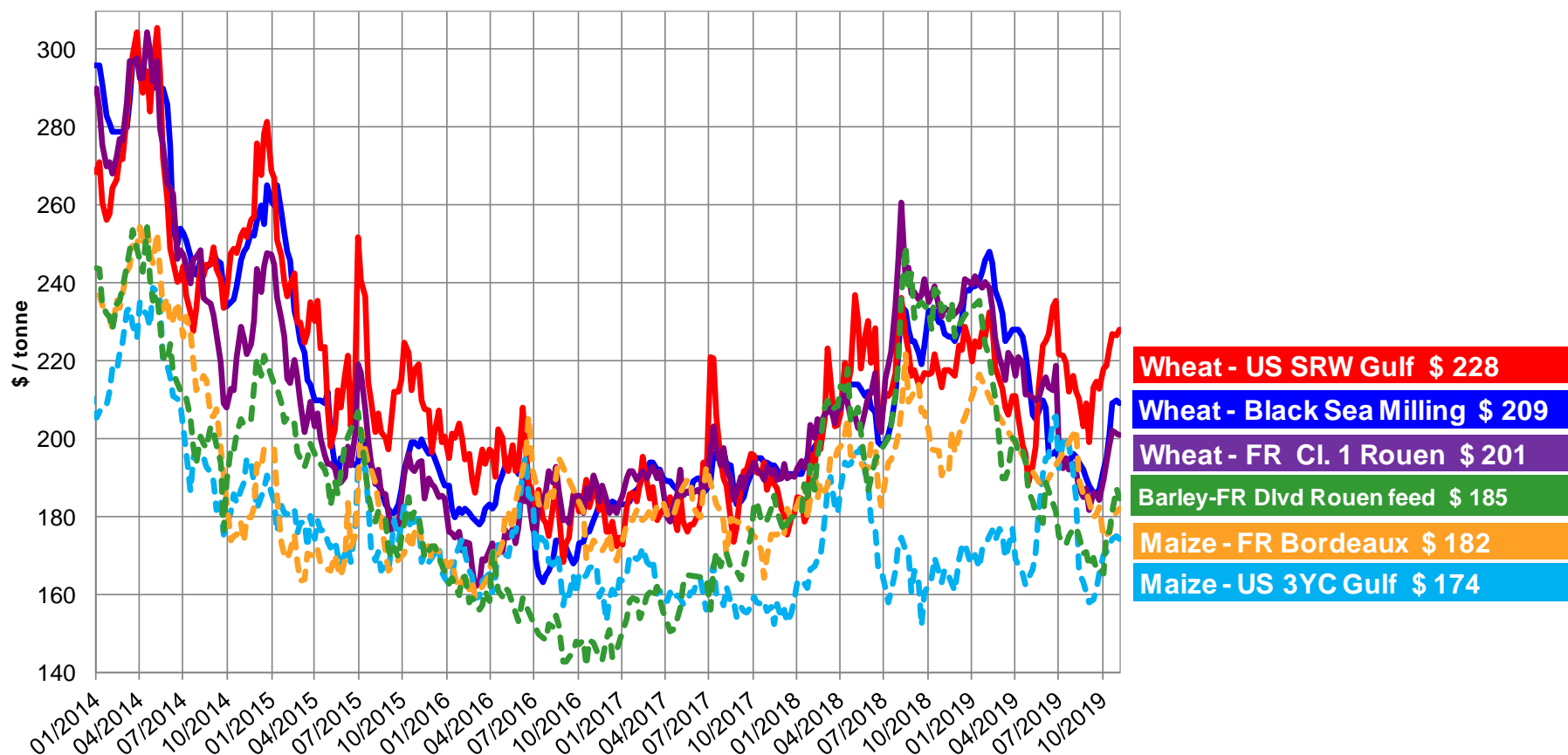
	2019/20	Share of total	2018/19	y/y change (%)
<b>EU-28</b>	<b>64.6</b>	5.9%	64.2	+0.5%
<b>USA</b>	<b>347.0</b>	31.5%	366.3	-5.3%
<b>Ukraine</b>	<b>35.5</b>	3.2%	35.8	-0.9%
<b>Russia</b>	<b>14.0</b>	1.3%	11.4	+22.6%
<b>Brazil</b>	<b>101.0</b>	9.2%	101.0	+0.0%
<b>Argentina</b>	<b>50.0</b>	4.5%	51.0	-2.0%
<b>China</b>	<b>254.0</b>	23.0%	257.3	-1.3%
<b>South Africa</b>	<b>14.0</b>	1.3%	11.8	+19.1%
<b>World</b>	<b>1,102.2</b>	<b>100%</b>	<b>1,125.0</b>	<b>-2.0%</b>

## World barley: IGC



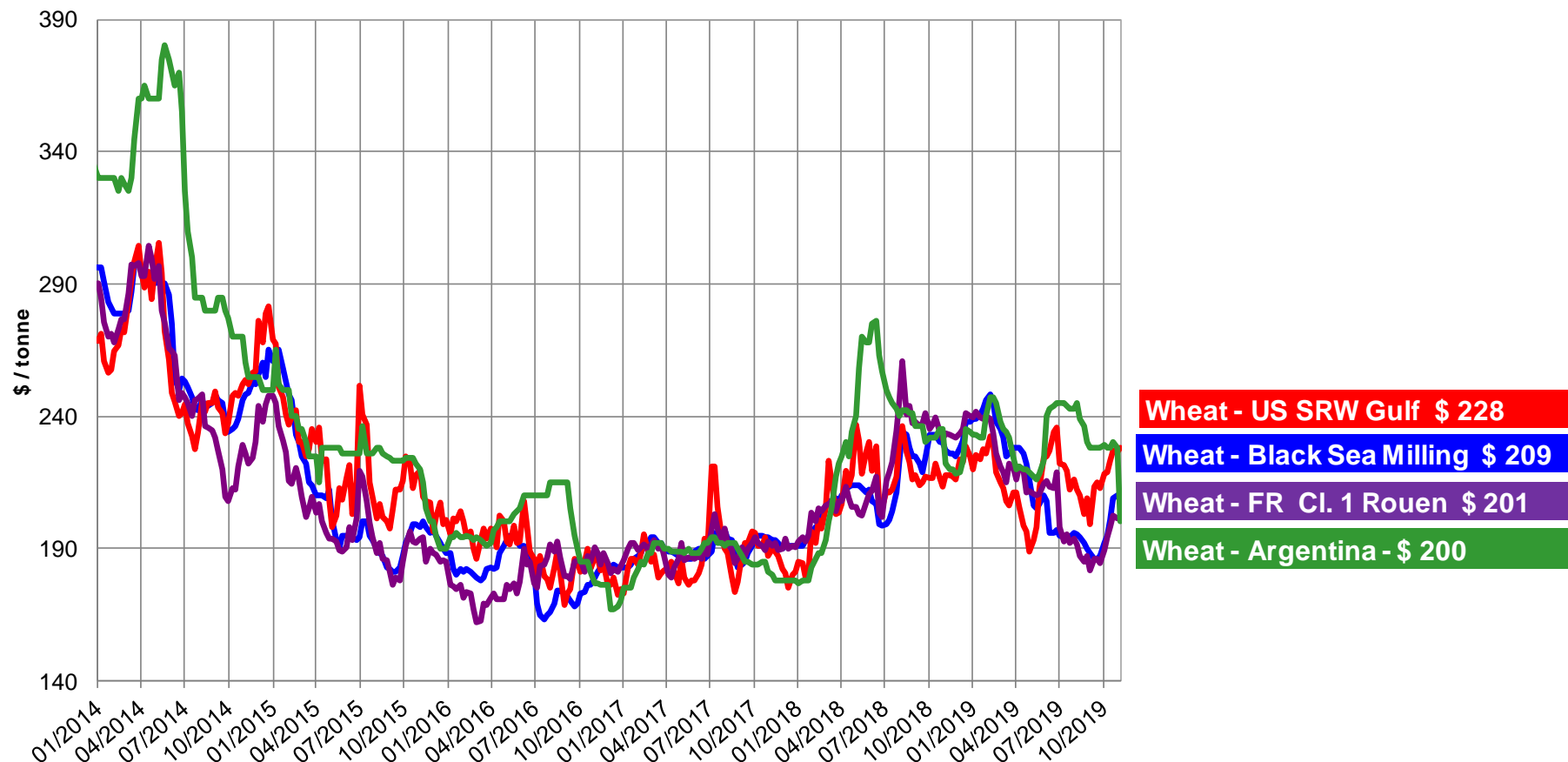
Source: IGC October report

## World cereal prices (\$/t)

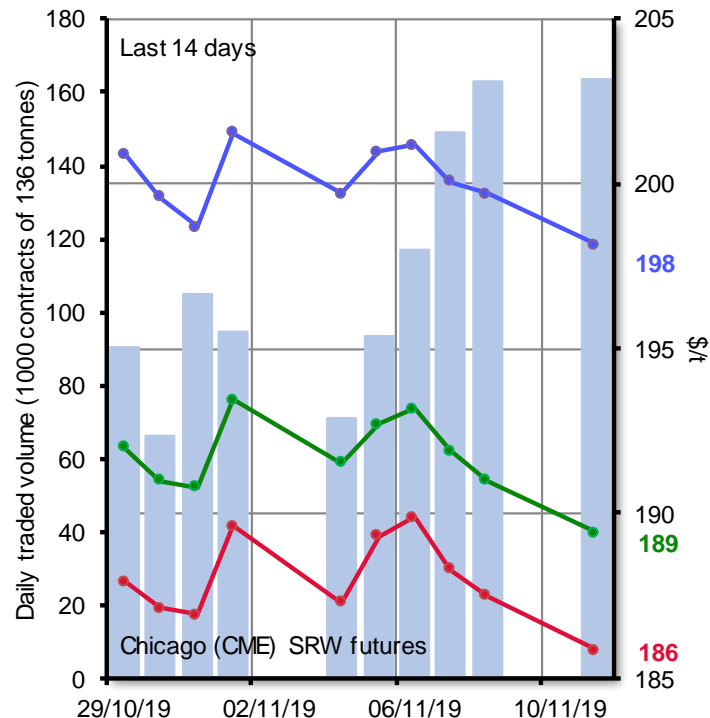
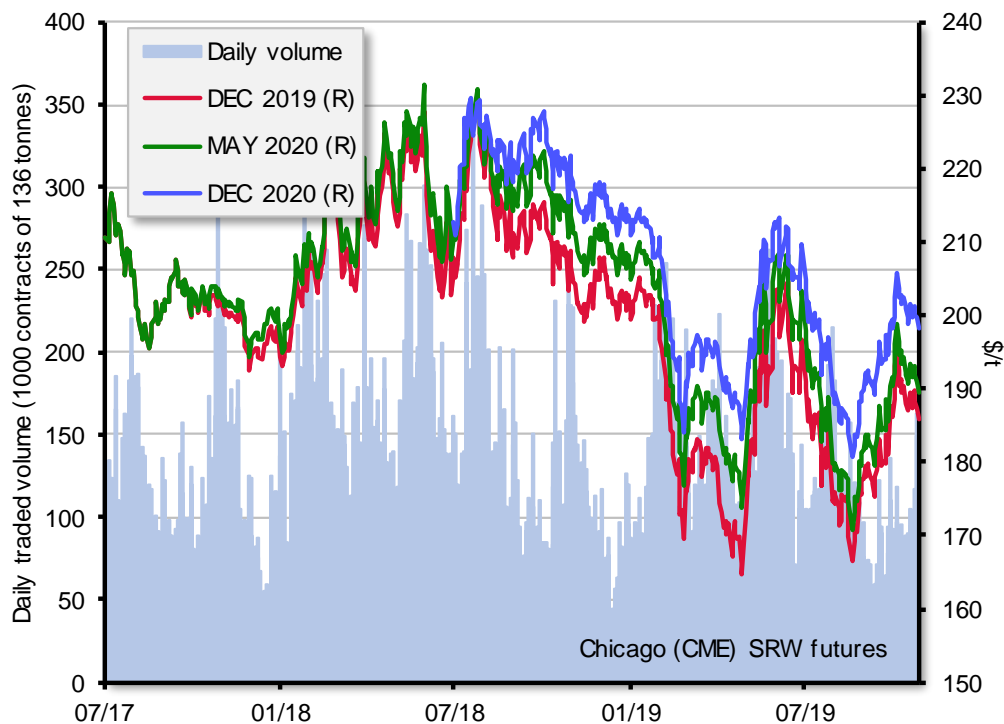




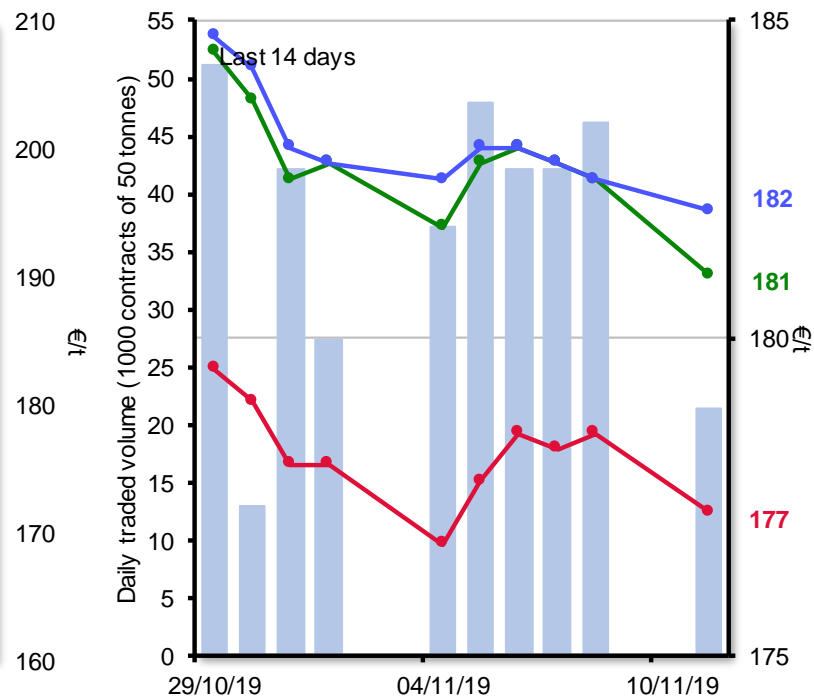
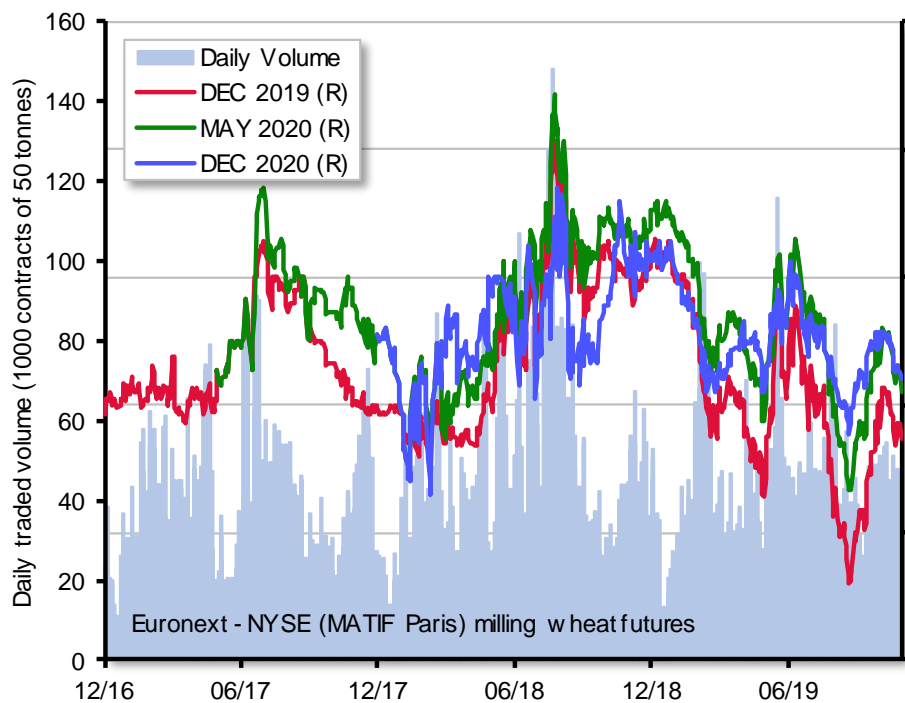
## World common wheat prices (\$/t)



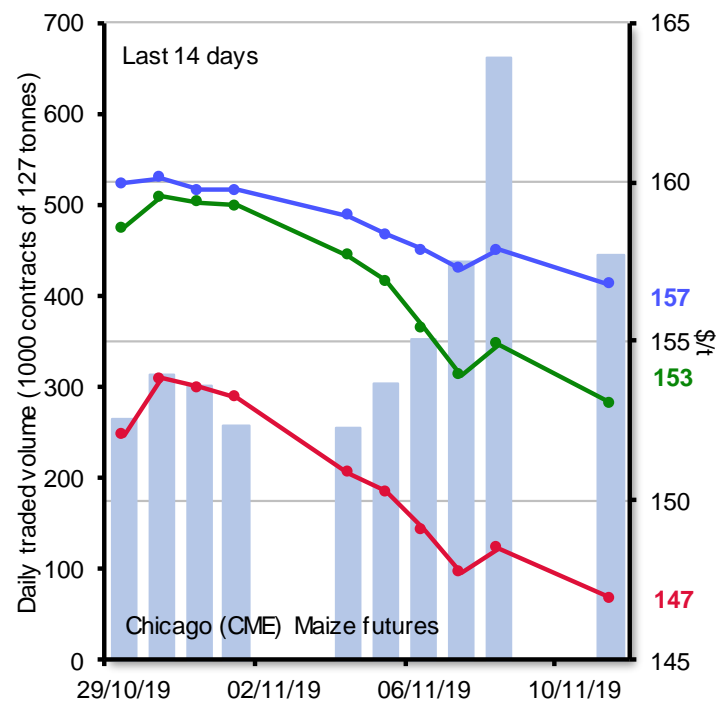
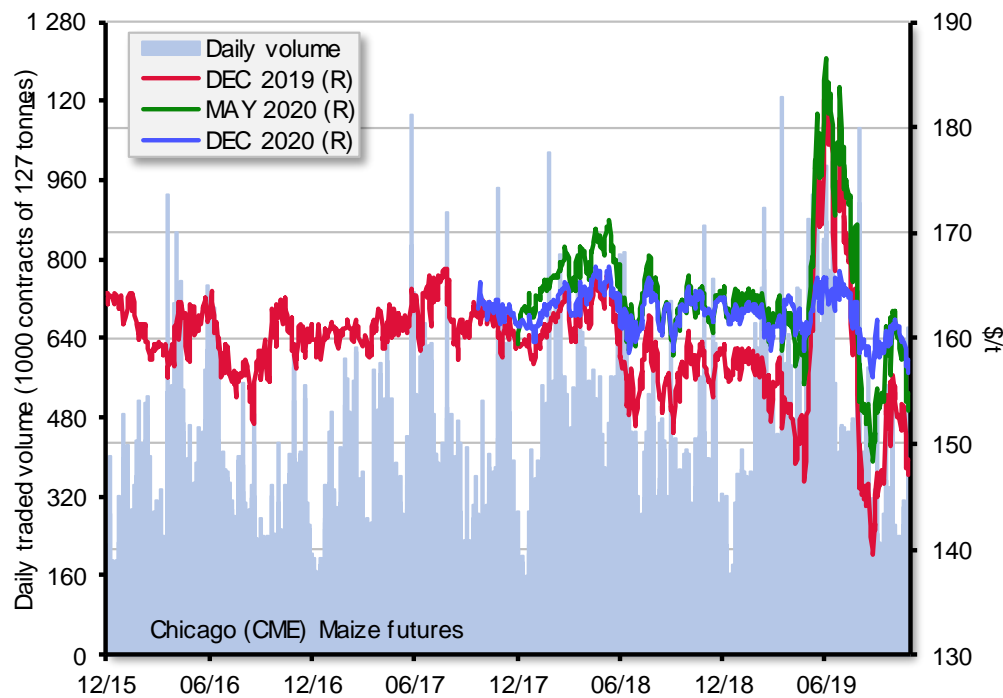
## US CME SRW wheat futures



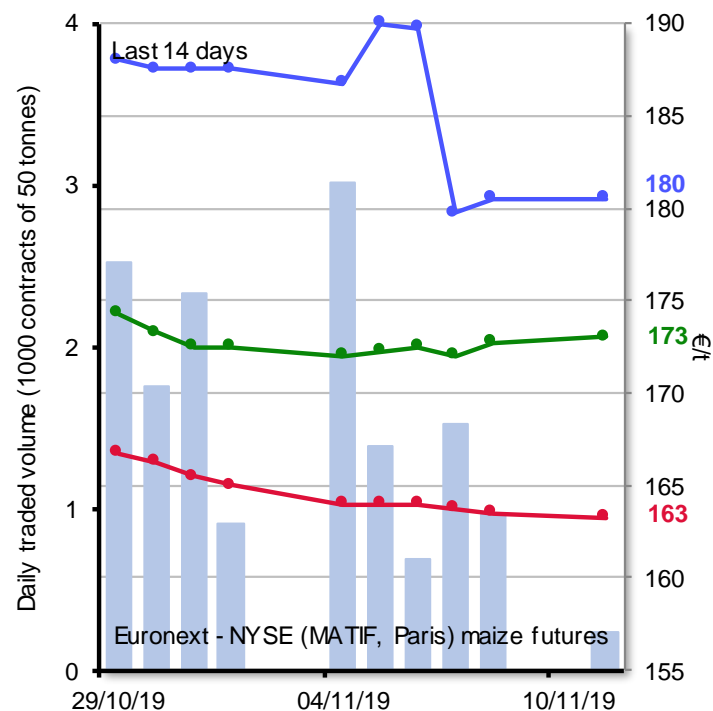
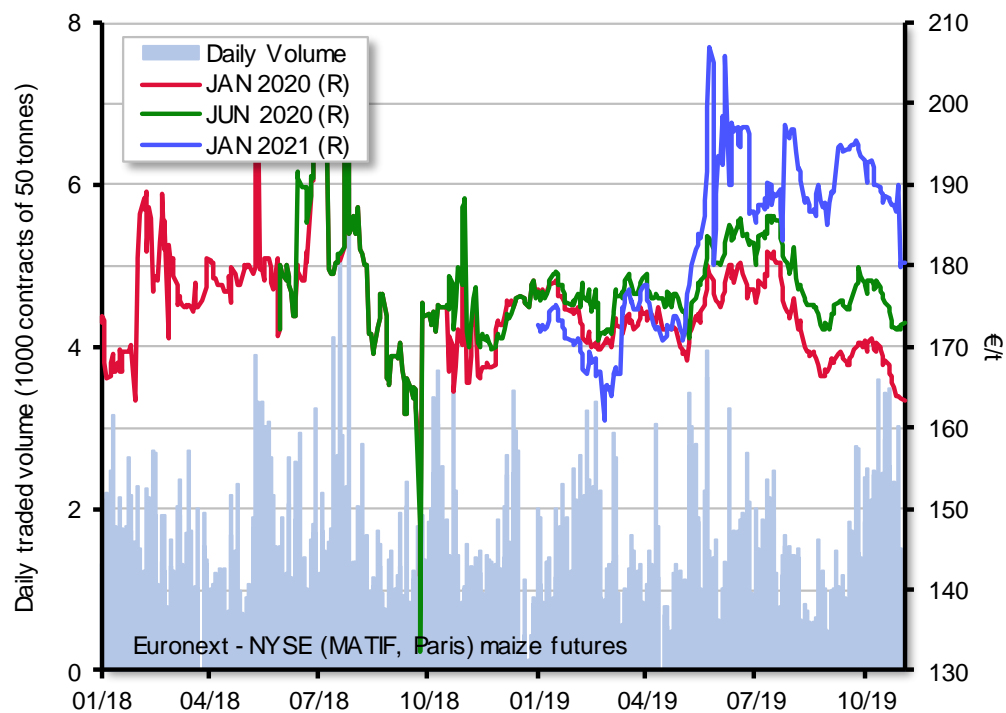
# EU Milling Wheat Futures



## CME maize futures



## EU maize futures



# **EU Cereals Balance Sheet and Forecasts**

**Marketing year 2018/19**

# EU 28 Cereals Balance Sheet

Thousand metric tonnes

LAST UPDATED: 31/10/2019	2018/19 (estimate)									
	Common wheat	Barley	Durum wheat	Maize	Rye	Sorghum	Oats	Triticale	Others	TOTAL CEREALS
<b>Beginning stocks</b>	<b>17.574</b>	<b>4.039</b>	<b>2.659</b>	<b>19.888</b>	<b>355</b>	<b>372</b>	<b>363</b>	<b>1.352</b>	<b>974</b>	<b>47.575</b>
Usable production	128.520	56.003	8.675	69.076	6.131	797	7.669	9.636	3.666	290.174
Area (thousand ha)	23.019	12.281	2.481	8.300	1.940	151	2.758	2.613	1.539	55.081
Yield (tonnes/ha)	5,6	4,6	3,5	8,3	3,2	5,3	2,8	3,7	2,4	5,3
Imports (from third countries)	4.083	140	1.345	24.229	298	758	14	4	127	30.997
<b>Total supply</b>	<b>150.177</b>	<b>60.182</b>	<b>12.678</b>	<b>113.193</b>	<b>6.784</b>	<b>1.927</b>	<b>8.046</b>	<b>10.991</b>	<b>4.767</b>	<b>368.745</b>
Total domestic use	116.862	46.971	9.456	84.682	6.373	1.274	7.720	9.887	4.613	287.837
Human consumption	48.011	362	8.048	4.879	3.000	155	1.149	52	23	65.679
Seed	4.787	2.131	473	402	403	29	450	500	100	9.274
Industrial uses	11.165	9.078	95	12.400	1.300		102	445	200	34.784
of which bioethanol/biofuel	4.665	437		6.500	700			344	14	12.659
Animal feed	52.000	35.000	800	66.400	1.600	1.090	5.950	8.800	4.250	175.890
Losses	900	400	40	600	70		70	90	40	2.210
Exports (to third countries)	21.433	7.981	925	3.491	207	7	106	1	10	34.162
<b>Total use</b>	<b>138.295</b>	<b>54.952</b>	<b>10.380</b>	<b>88.173</b>	<b>6.580</b>	<b>1.281</b>	<b>7.826</b>	<b>9.888</b>	<b>4.623</b>	<b>321.999</b>
<b>Ending stocks**</b>	<b>11.882</b>	<b>5.230</b>	<b>2.298</b>	<b>25.020</b>	<b>204</b>	<b>646</b>	<b>220</b>	<b>1.103</b>	<b>144</b>	<b>46.746</b>
<b>Change in stocks**</b>	<b>-5.692</b>	<b>1.191</b>	<b>-360</b>	<b>5.132</b>	<b>-151</b>	<b>274</b>	<b>-143</b>	<b>-249</b>	<b>-830</b>	<b>-829</b>

\* Marketing year: from July to June

\*\* At the end of the marketing year



## EU BALANCE SHEET 2018/19

- Production forecast: below average (290.2 million t; -5% y/y)
  - + Floods and drought impact
  - + Soft wheat and barley: respectively - 9% and -4% y/y
  - + Maize: +7% y/y
- Total imports reached a new record, mostly due to maize
- Slight increase of the total exports y/y



# **EU Cereals Balance Sheet, Forecasts & Prices**

**Marketing year 2019/20**

# EU 28- 2019 Production Forecasts

## EVOLUTION OF THE EU CEREALS USABLE PRODUCTION

Million tonnes	2017/2018	2018/2019	2019/2020 Sept fcst	2019/2020 Oct fcst	% change 2018/2019
<b>TOTAL</b>	<b>305,3</b>	<b>290,2</b>	<b>312,3</b>	<b>315,6</b>	8,8
Soft wheat	142,0	128,5	145,0	147,0	14,4
Durum wheat	8,7	8,7	7,8	7,8	-10,3
Barley	58,3	56,0	61,4	62,4	11,4
Maize	64,8	69,1	66,5	66,6	-3,6
Rye	7,2	6,1	8,2	8,3	36,1
Oats	8,1	7,7	7,7	7,7	0,0

Sources : DG AGRI - G4

# EU 28 Cereals Balance Sheet

Thousand metric tonnes

LAST UPDATED: 31/10/2019	2019/20 (forecast)									
	Common wheat	Barley	Durum wheat	Maize	Rye	Sorghum	Oats	Triticale	Others	TOTAL CEREALS
<b>Beginning stocks</b>	11.882	5.230	2.298	25.020	204	646	220	1.103	144	46.746
Usable production	147.010	62.416	7.775	66.580	8.338	941	7.720	10.866	3.914	315.560
<i>Area (thousand ha)</i>	23.896	12.237	2.315	8.853	2.215	190	2.657	2.742	1.374	56.479
<i>Yield (tonnes/ha)</i>	6,2	5,1	3,4	7,5	3,8	4,9	2,9	4,0	2,8	5,6
Imports (from third countries)	3.379	600	2.000	17.000	80	259	4		154	23.476
<b>Total supply</b>	<b>162.271</b>	<b>68.245</b>	<b>12.073</b>	<b>108.600</b>	<b>8.622</b>	<b>1.845</b>	<b>7.944</b>	<b>11.969</b>	<b>4.212</b>	<b>385.782</b>
Total domestic use	118.138	50.285	9.436	83.418	6.905	746	7.470	9.931	3.658	289.987
Human consumption	48.147	363	8.071	4.881	3.069	156	1.152	52	23	65.913
Seed	4.891	2.165	430	430	456	40	445	539	293	9.691
Industrial uses	11.600	9.156	95	12.507	1.311		103	449	202	35.423
<i>of which bioethanol/biofuel</i>	5.000	437		6.800	700			344	14	13.295
Animal feed	52.600	38.200	800	65.000	2.000	550	5.700	8.800	3.100	176.750
Losses	900	400	40	600	70		70	90	40	2.210
Exports (to third countries)	26.000	9.000	900	3.500	154	4	187	2	8	39.755
<b>Total use</b>	<b>144.138</b>	<b>59.285</b>	<b>10.336</b>	<b>86.918</b>	<b>7.060</b>	<b>750</b>	<b>7.656</b>	<b>9.932</b>	<b>3.666</b>	<b>329.743</b>
<b>Ending stocks**</b>	<b>18.133</b>	<b>8.960</b>	<b>1.737</b>	<b>21.682</b>	<b>1.562</b>	<b>1.095</b>	<b>288</b>	<b>2.037</b>	<b>546</b>	<b>56.039</b>
<b>Change in stocks**</b>	6.251	3.730	-562	-3.338	1.358	449	68	934	402	9.293

\* Marketing year: from July to June

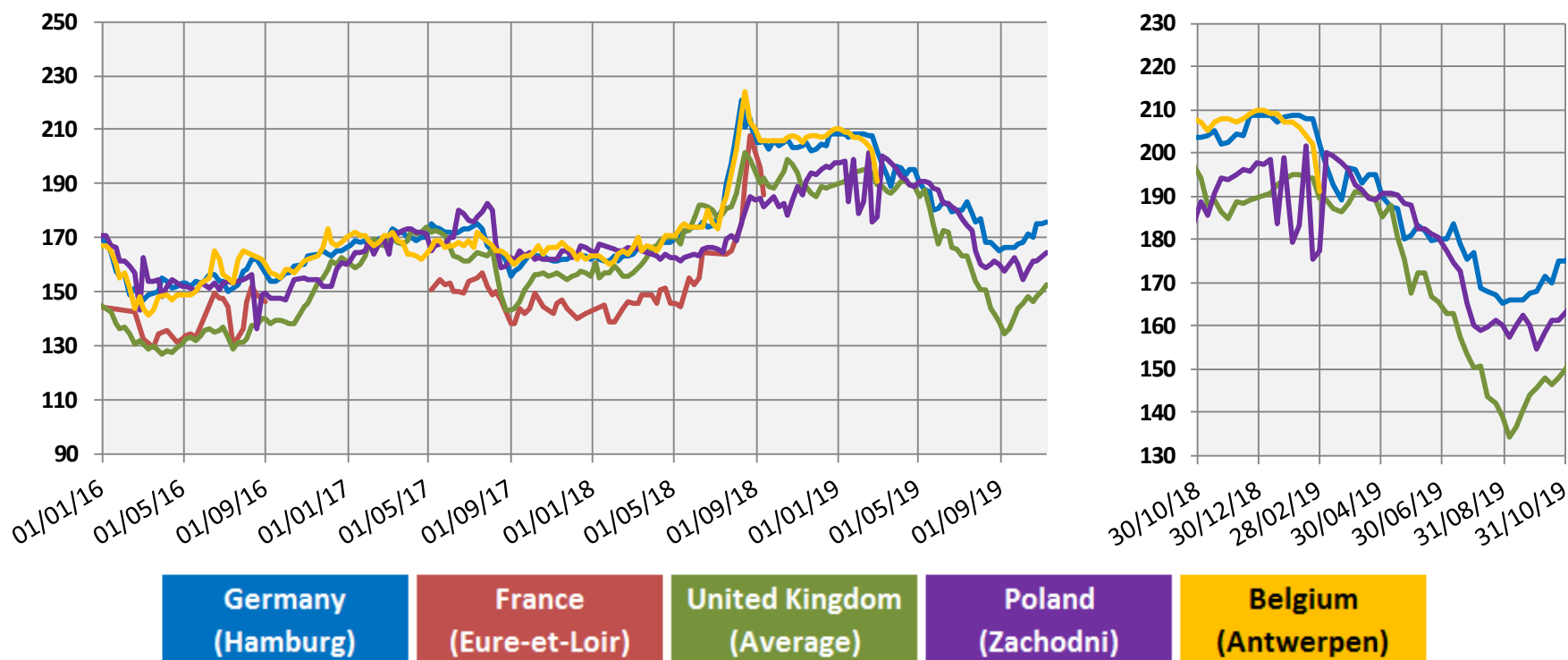
\*\* At the end of the marketing year



## **EU BALANCE SHEET 2019/20**

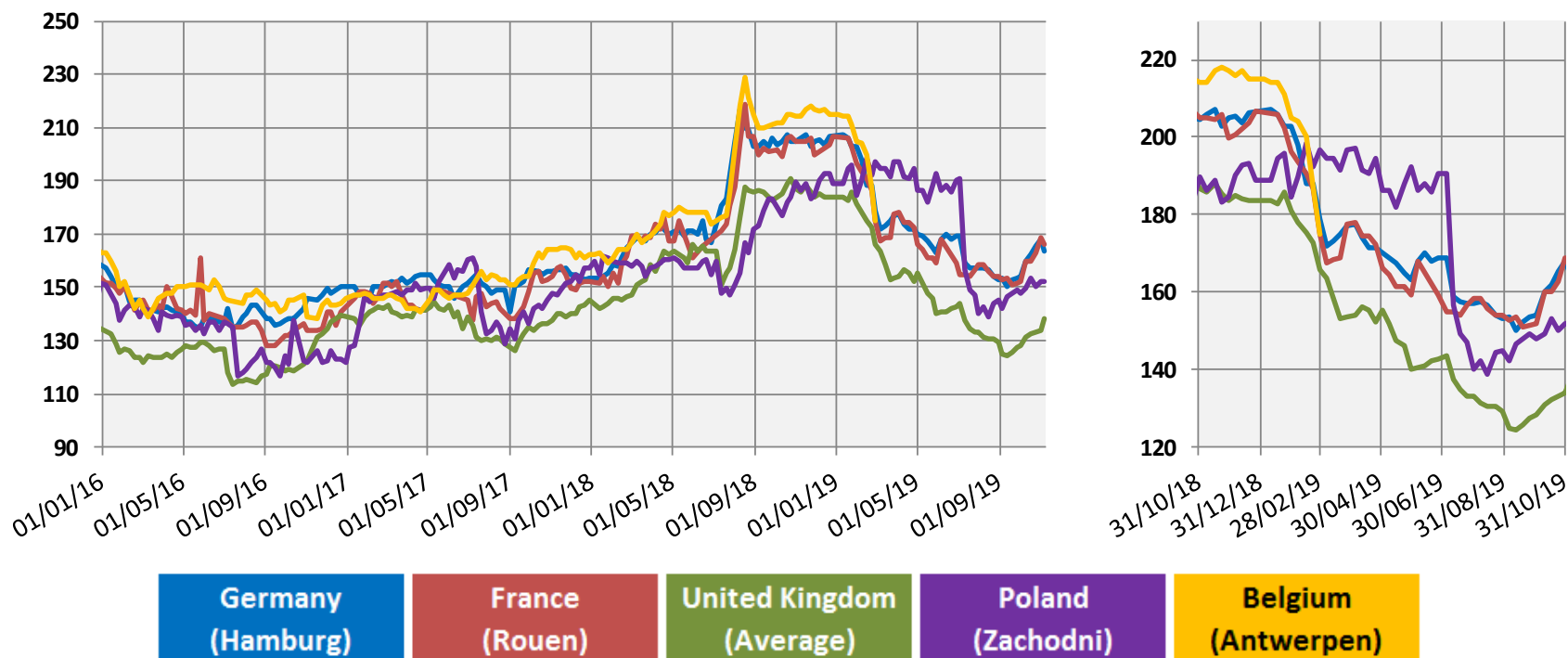
- Production forecast: above average (315.6m t; + 8.8% y/y)
  - Increase of total EU cereals area (56.6m ha; +2.8% y/y)
  - Recovery of soft wheat and barley production
  - Good quality milling wheat at EU level
- Decrease of total imports, in particular for maize
- Recovery of total exports, in particular for soft wheat
- Increase of total ending stocks

## EU Market prices for feed wheat (€/tonne)



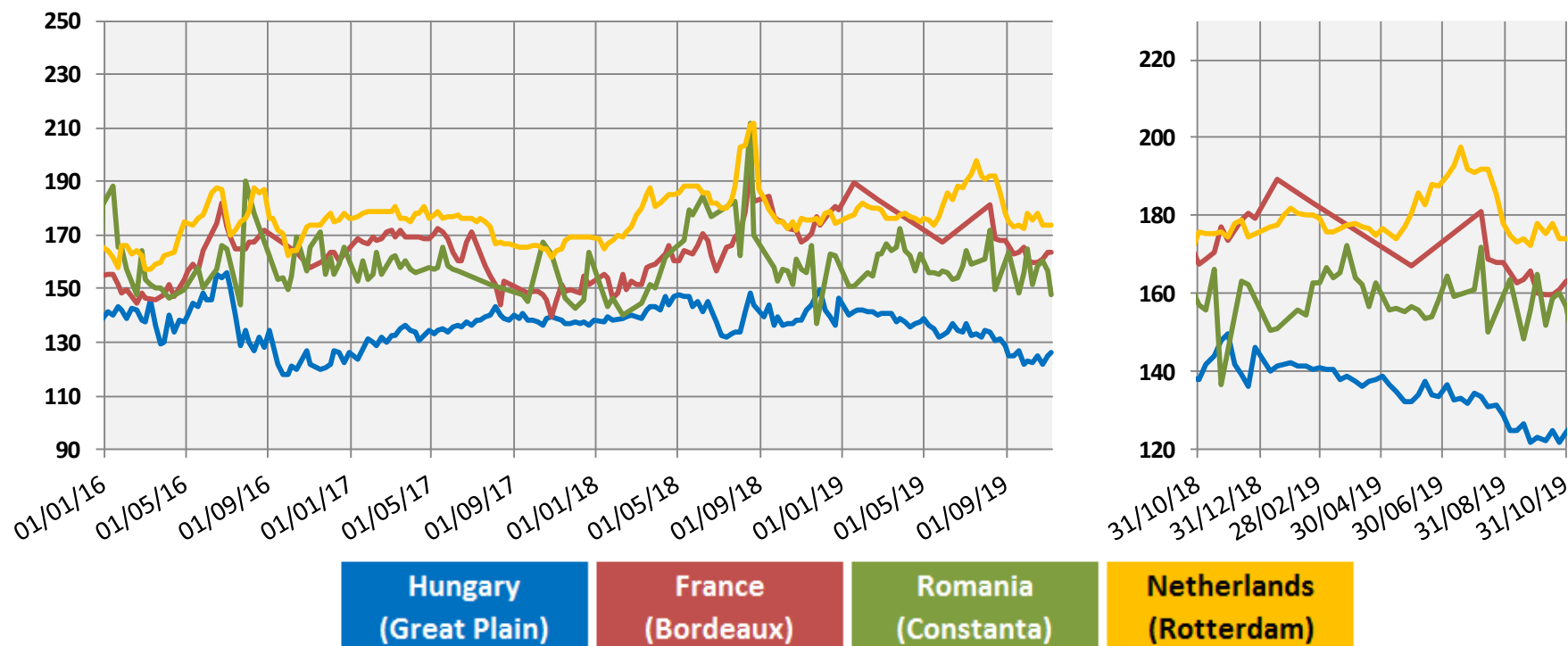
Source: Member States notification - Commission Implementing Regulation (EU) 2017/1185 Art.11, Annex I Point 1

## EU Market prices for feed barley (€/tonne)



Source: Member States notification - Commission Implementing Regulation (EU) 2017/1185 Art.11, Annex I Point 1

## EU Market prices for maize (€/tonne)

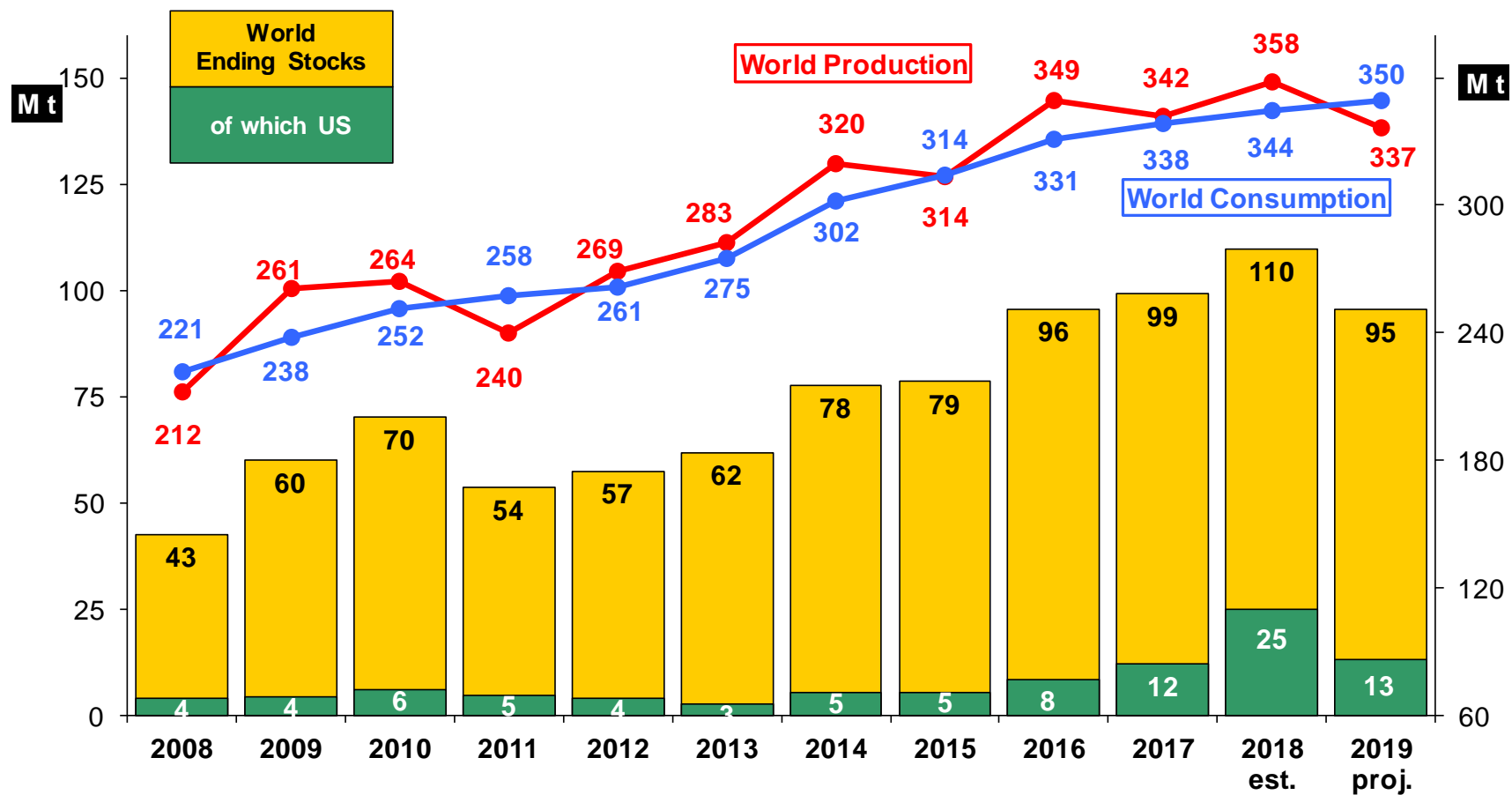


Source: Member States notification - Commission Implementing Regulation (EU) 2017/1185 Art.11, Annex I Point 1

# World Oilseeds Forecasts and Prices

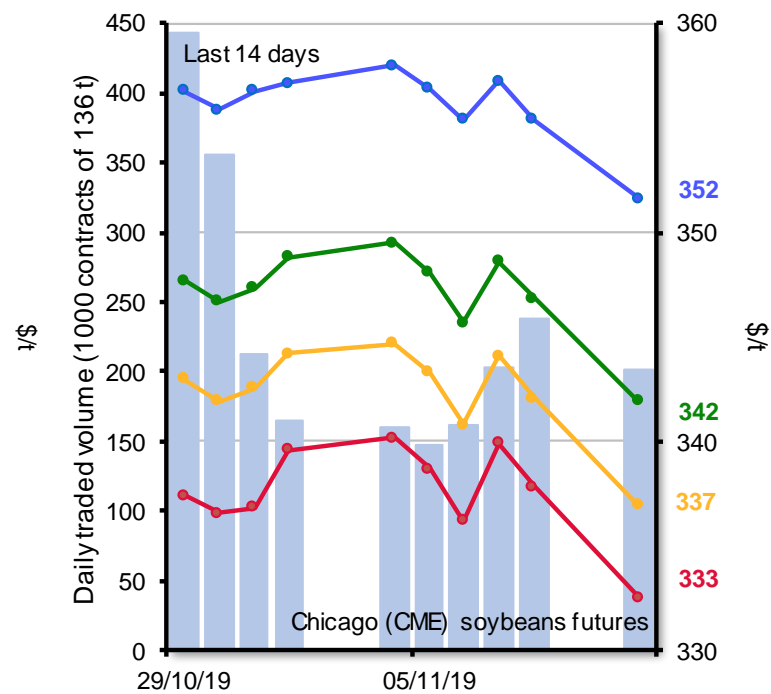
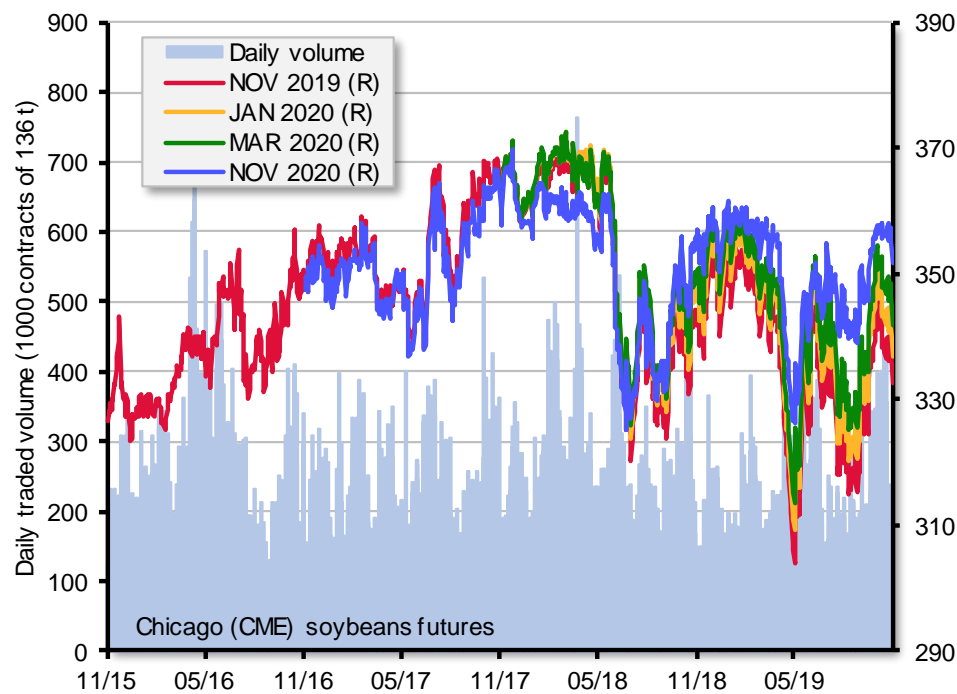


## World soya: USDA

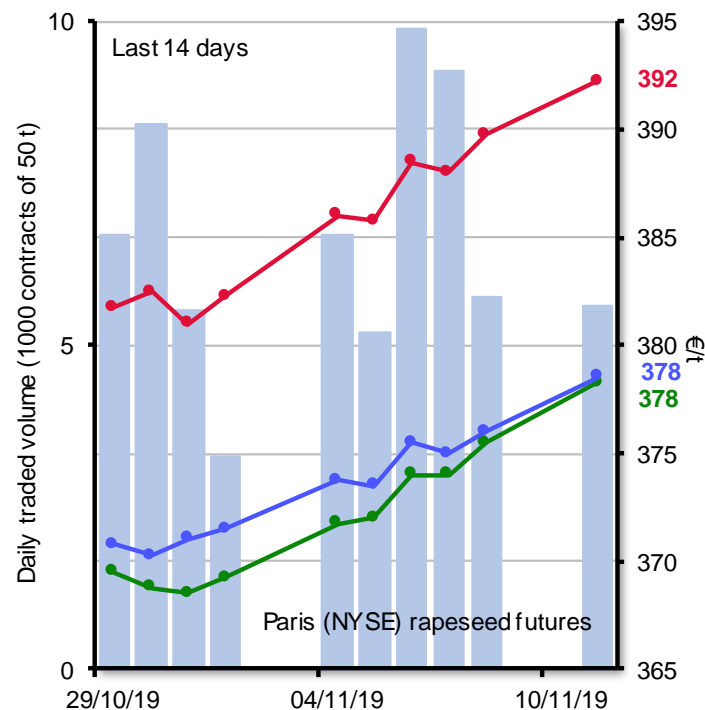
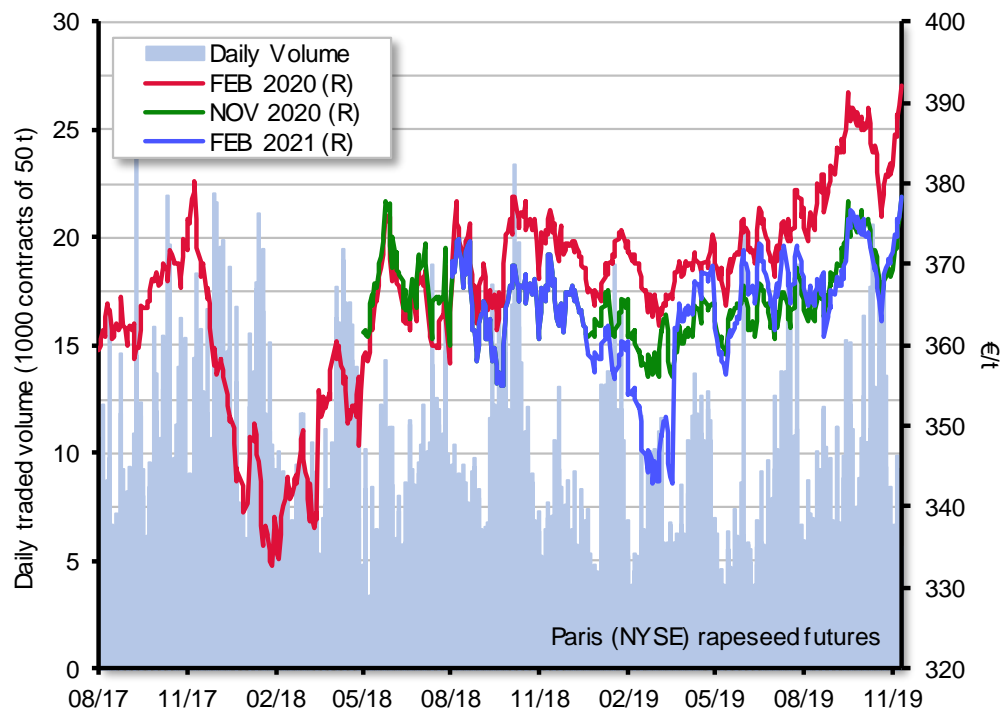


Source: USDA November report

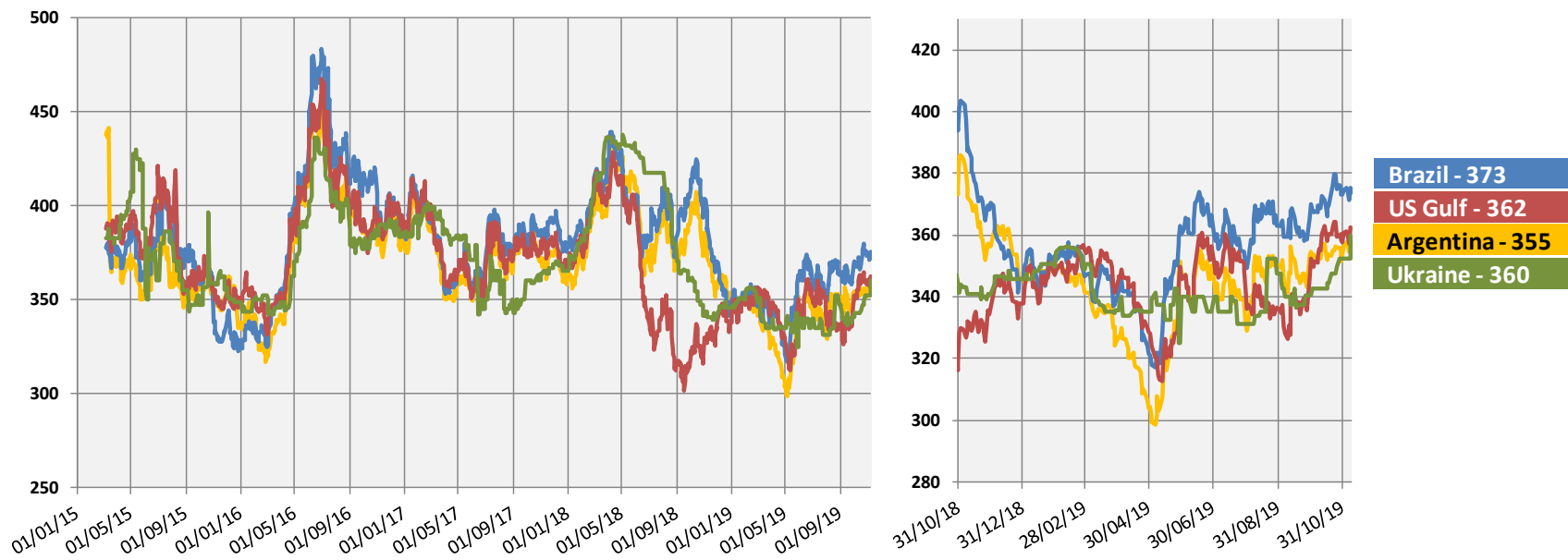
## CME soya futures



# NYSE Euronext rapeseed futures

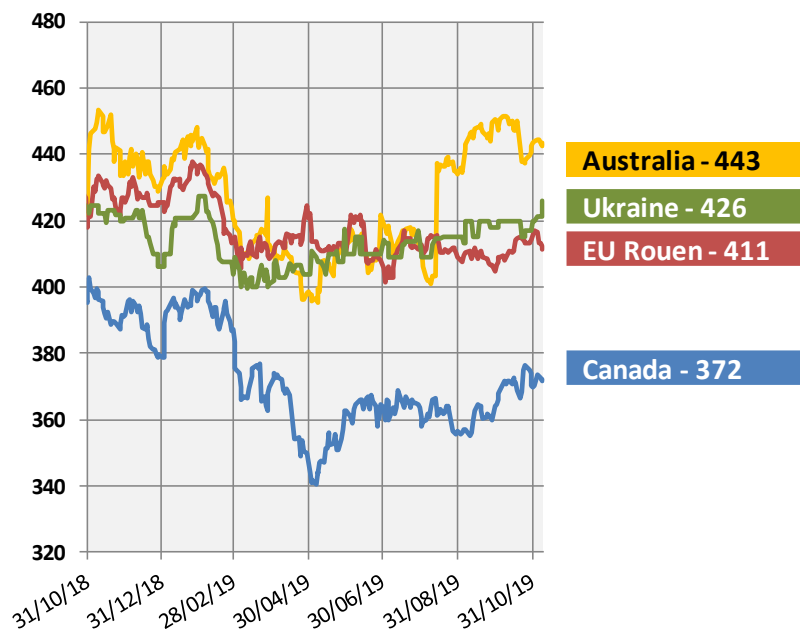
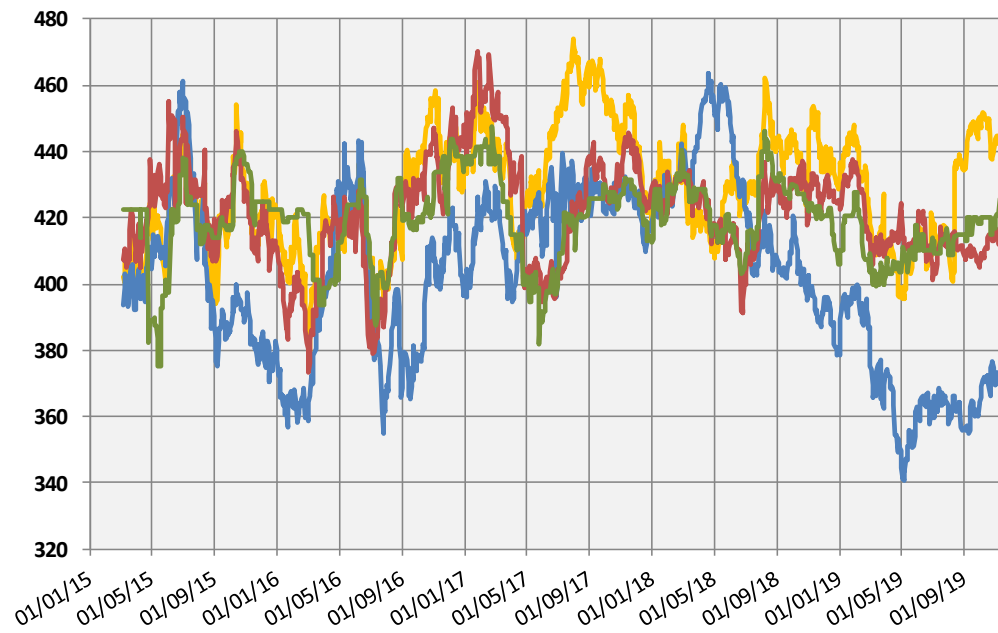


## World export prices for soya beans - (\$/tonne)



Source: International Grains Council

## World export prices for rapeseed - (\$/tonne)



Source: International Grains Council

# **EU Oilseeds Balance Sheet and Forecasts**

**Marketing year 2019/20**

# EU Oilseeds

## EU OILSEEDS AREA

Million ha	AVG 5 yrs trimmed	2018/19	2019/20 September	2019/20 October	change year on year	change on 5yrs AVG
Rapeseed	6,67	6,90	5,61	<b>5,64</b>	-18,3%	-15,4%
Sunflower	4,20	4,03	4,35	<b>4,35</b>	8,1%	3,6%
Soya Beans	0,89	0,96	1,00	<b>0,99</b>	4,1%	11,3%
<b>TOTAL</b>	<b>11,76</b>	<b>11,88</b>	<b>10,96</b>	<b>10,99</b>	<b>-8%</b>	<b>-7%</b>

Sources : EC - DG AGRI

## EU OILSEEDS PRODUCTION

Million tonnes	AVG 5 yrs trimmed	2018/19	2019/20 September	2019/20 October	change 2018/19	change AVG 5yrs
Rapeseed	21,31	20,01	16,93	<b>16,77</b>	-16,2%	-21,3%
Sunflower	9,33	9,97	9,95	<b>9,84</b>	-1,3%	5,5%
Soya Beans	2,51	2,83	2,86	<b>2,94</b>	3,7%	17,2%
<b>TOTAL</b>	<b>32,88</b>	<b>32,82</b>	<b>29,73</b>	<b>29,55</b>	<b>-10,0%</b>	<b>-10,9%</b>

Sources : EC - DG AGRI

## EU rapeseed (MS)

### Rapeseed

Production Million tonnes	AVG 5 yrs trimmed	2018/19	2019/20 September	2019/20 October	change year on year	%change 5yrs trimmed
<b>TOTAL EU</b>	<b>21,31</b>	<b>20,04</b>	<b>16,93</b>	<b>16,77</b>	<b>-16,3%</b>	<b>-21,3%</b>
France	5,21	4,95	3,54	<b>3,54</b>	-29%	-32%
Germany	4,62	3,68	2,87	<b>2,85</b>	-23%	-39%
Poland	2,54	2,18	2,39	<b>2,29</b>	5%	-10%
UK	2,23	2,07	1,71	<b>1,77</b>	-15%	-21%
Czech Republic	1,34	1,41	1,19	<b>1,16</b>	-18%	-14%
Romania	1,32	1,61	0,69	<b>0,69</b>	-57%	-48%
Others	4,04	4,14	4,54	<b>4,48</b>	8%	11%

Sources : DG AGRI G.4



# EU oilseeds balance sheet

Thousand metric tonnes

OILSEED	2018/19 est				2019/20 fc			
LAST UPDATED: 31/10/2019	Rapeseed	Soybean	Sunflower	TOTAL	Rapeseed	Soybean	Sunflower	TOTAL
<b>Beginning stocks</b>	<b>2.287</b>	<b>2.296</b>	<b>937</b>	<b>5.520</b>	<b>1.520</b>	<b>2.140</b>	<b>891</b>	<b>4.551</b>
Usable production	20.015	2.833	9.973	32.820	16.769	2.938	9.842	29.549
Area (thousand ha)	6.901	956	4.026	11.882	5.641	995	4.350	10.986
Yield (tonnes/ha)	2,9	3,0	2,5	2,8	3,0	3,0	2,3	2,7
Imports (from third countries)	4.232	15.076	521	19.830	6.000	15.100	513	21.613
<b>Total supply</b>	<b>26.534</b>	<b>20.205</b>	<b>11.431</b>	<b>58.170</b>	<b>24.289</b>	<b>20.178</b>	<b>11.246</b>	<b>55.713</b>
Domestic use	24.924	17.907	10.014	52.846	23.189	18.911	9.918	52.018
of which crushing	24.030	15.843	8.907	48.780	22.348	16.599	8.855	47.803
Exports (to third countries)	89	158	526	772	100	167	503	770
<b>Total use</b>	<b>25.014</b>	<b>18.065</b>	<b>10.540</b>	<b>53.619</b>	<b>23.289</b>	<b>19.078</b>	<b>10.421</b>	<b>52.788</b>
<b>Ending stocks</b>	<b>1.520</b>	<b>2.140</b>	<b>891</b>	<b>4.551</b>	<b>1.000</b>	<b>1.100</b>	<b>825</b>	<b>2.925</b>
Change in stocks	-767	-156	-46	-969	-520	-1.040	-66	-1.626



**Thank you for your attention!**

**Presentations & Balance sheets  
available at:**

**[http://ec.europa.eu/agriculture/cereals/index\\_en.htm](http://ec.europa.eu/agriculture/cereals/index_en.htm)**

**EU Crops Market Observatory**

**[https://ec.europa.eu/agriculture/market-observatory/crops\\_en](https://ec.europa.eu/agriculture/market-observatory/crops_en)**