



# **Civil Dialog Group on "Wine"**

**Tuesday, October 10<sup>th</sup> 2017**

## **4. European wine market:**

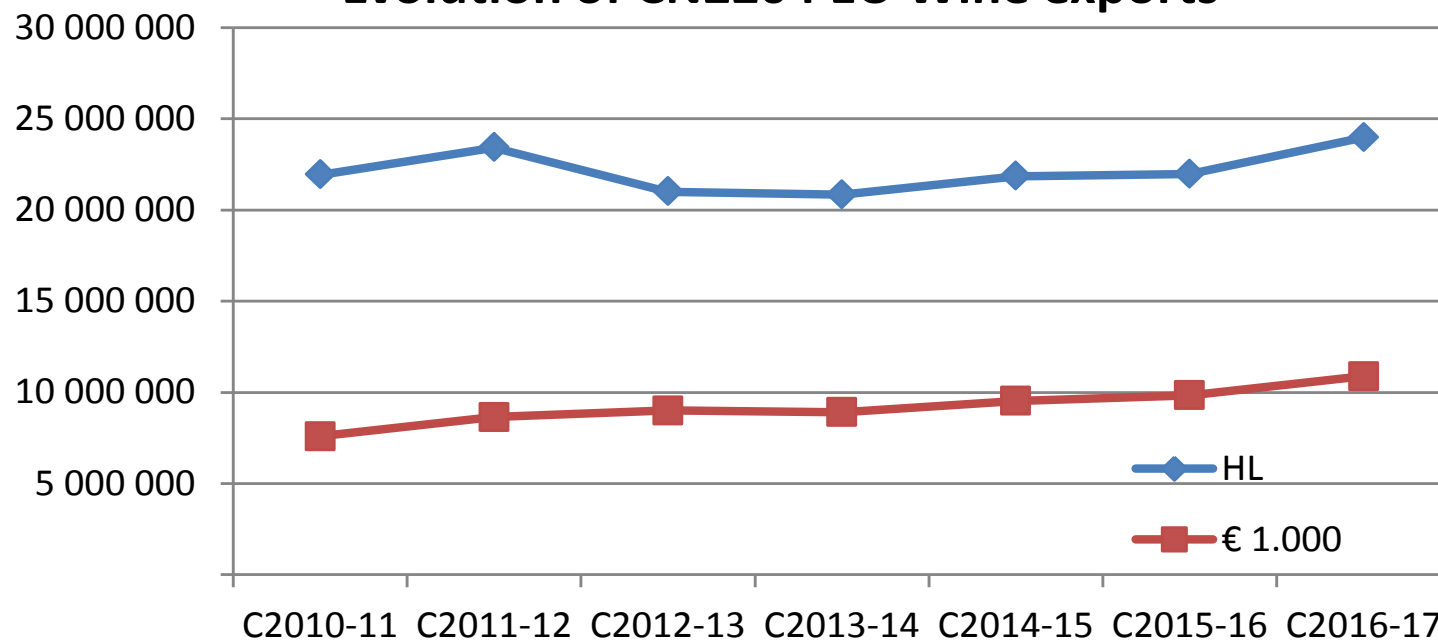
**Exchange on the latest information on**

**harvest estimations**

**9h50 – 10h35**

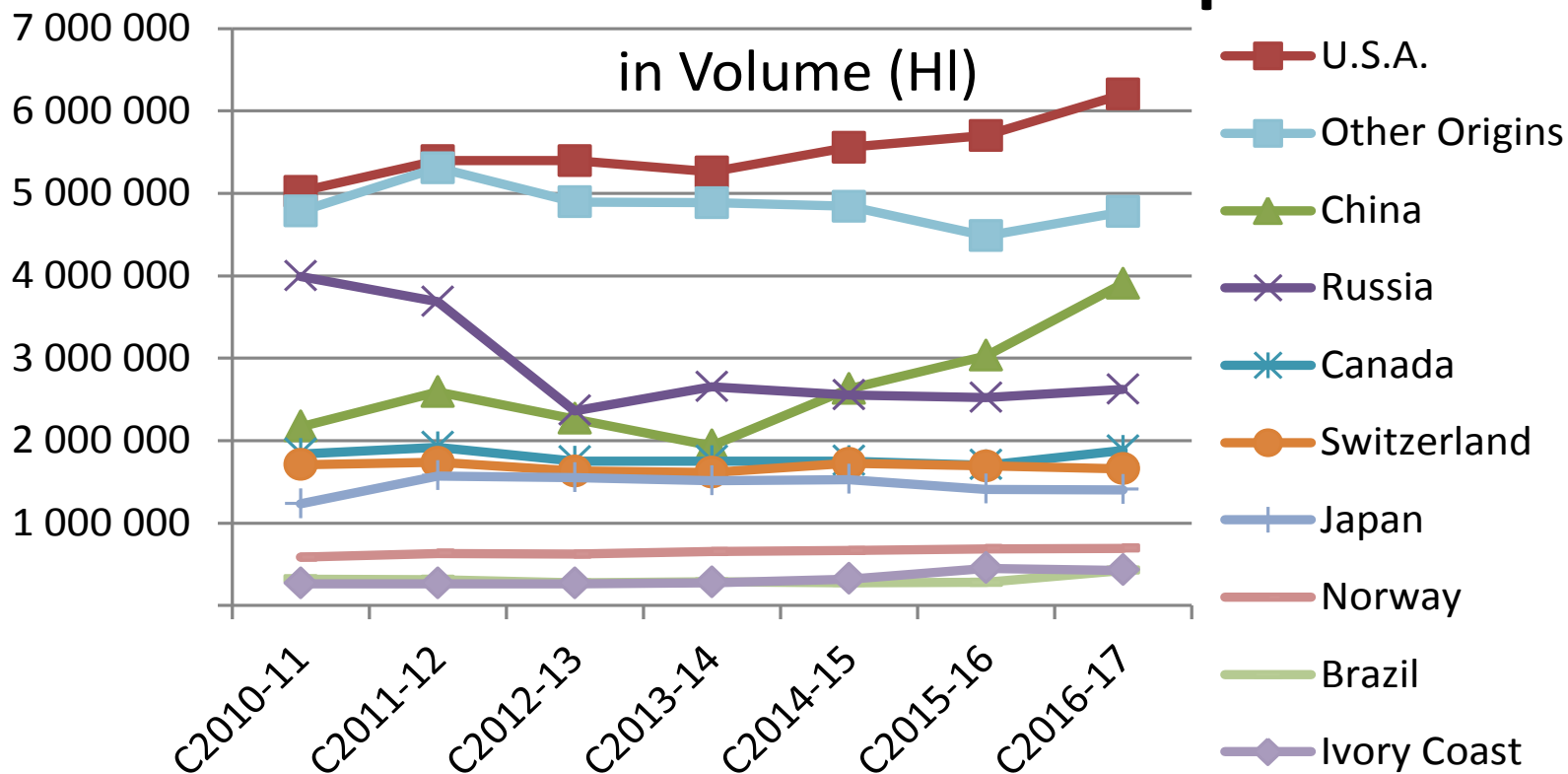
**Guy Duren  
DG AGRI-G2**

## Evolution of CN2204 EU Wine exports



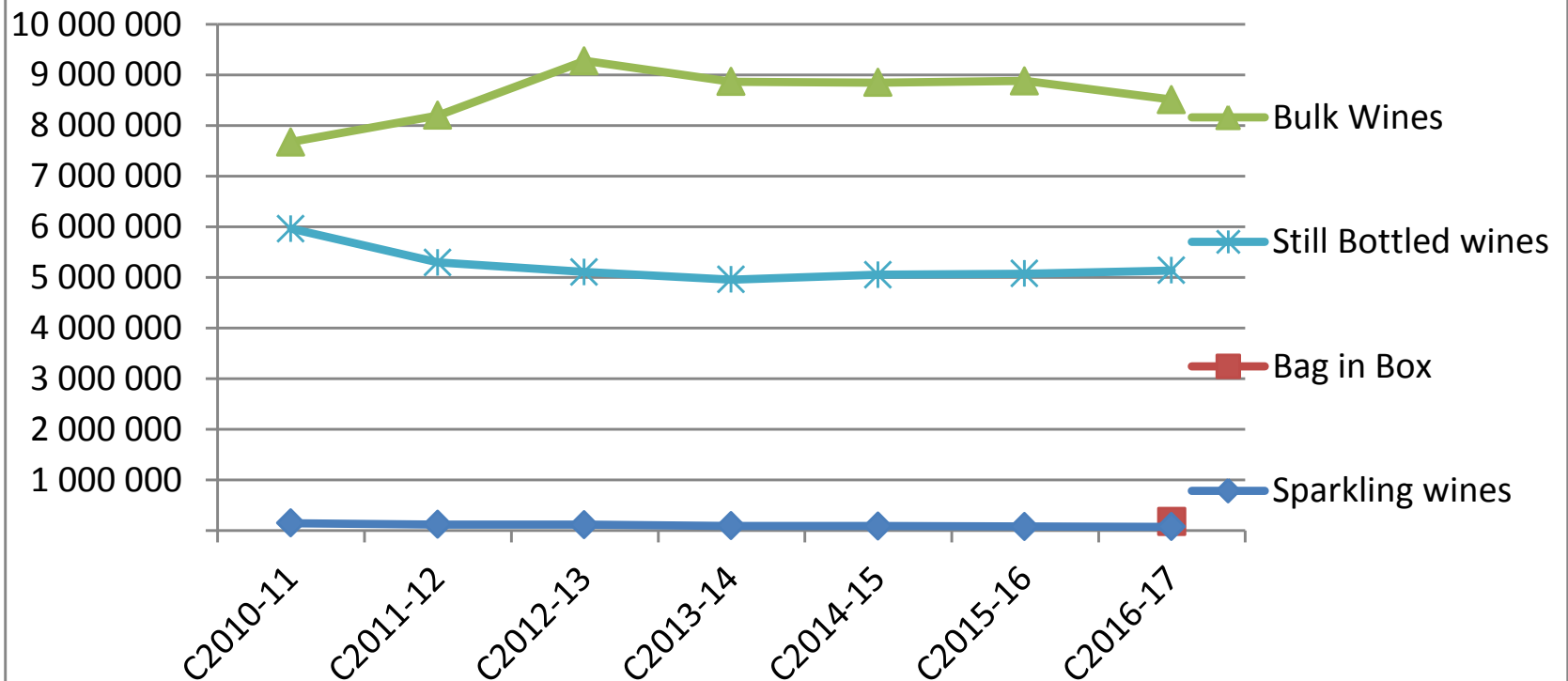
Source: EC-EUROSTAT COMEXT external trade DataBases

## Evolution of CN2204 EU-28 Exports




Source: EC-EUROSTAT COMEXT external trade DataBases

## Evolution of CN2204 EU wine import in HL



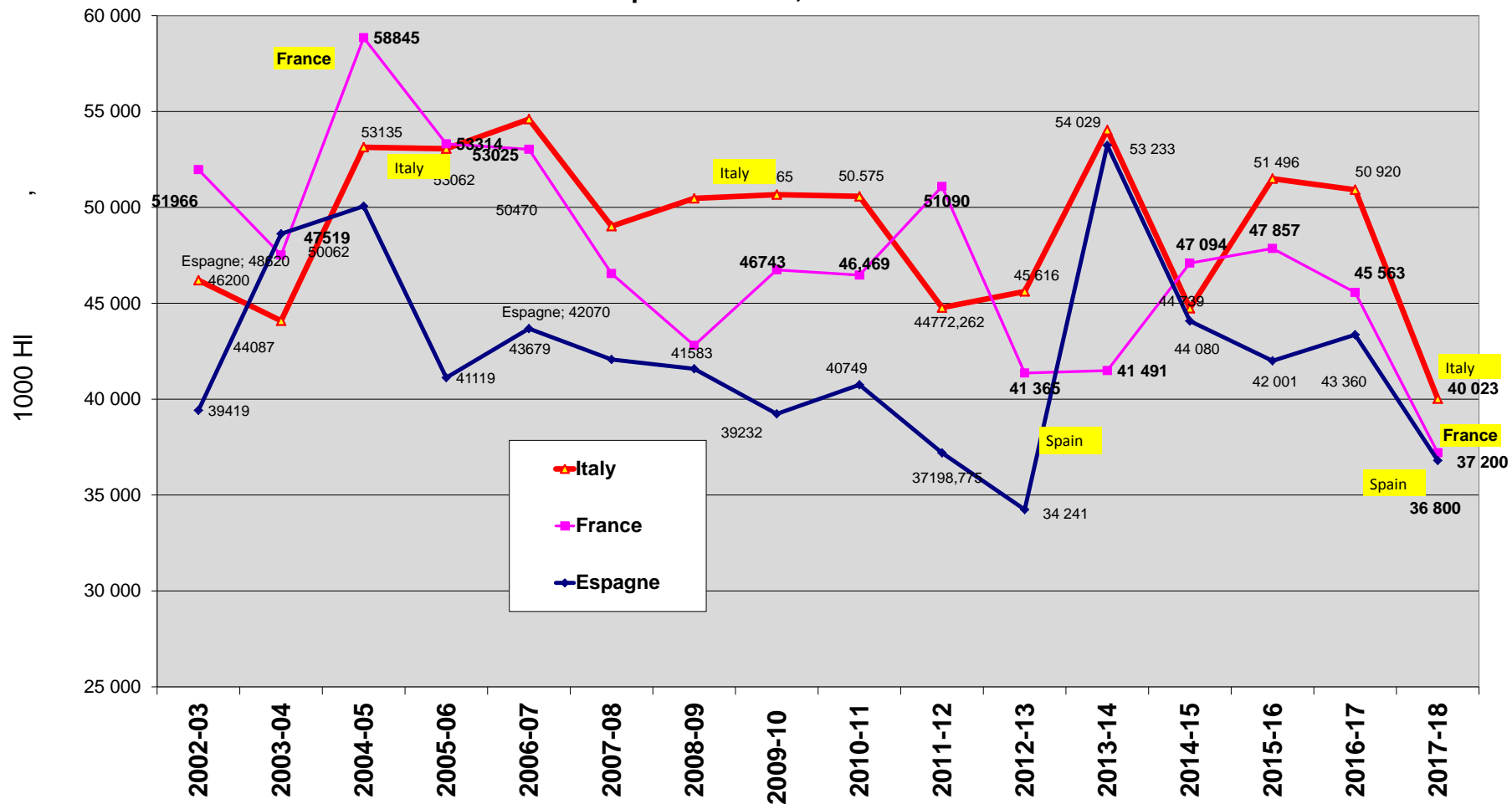
Source: EC-EUROSTAT COMEXT external trade DataBases

# Extreme weather pushes EU wine harvest to historical low in 2017

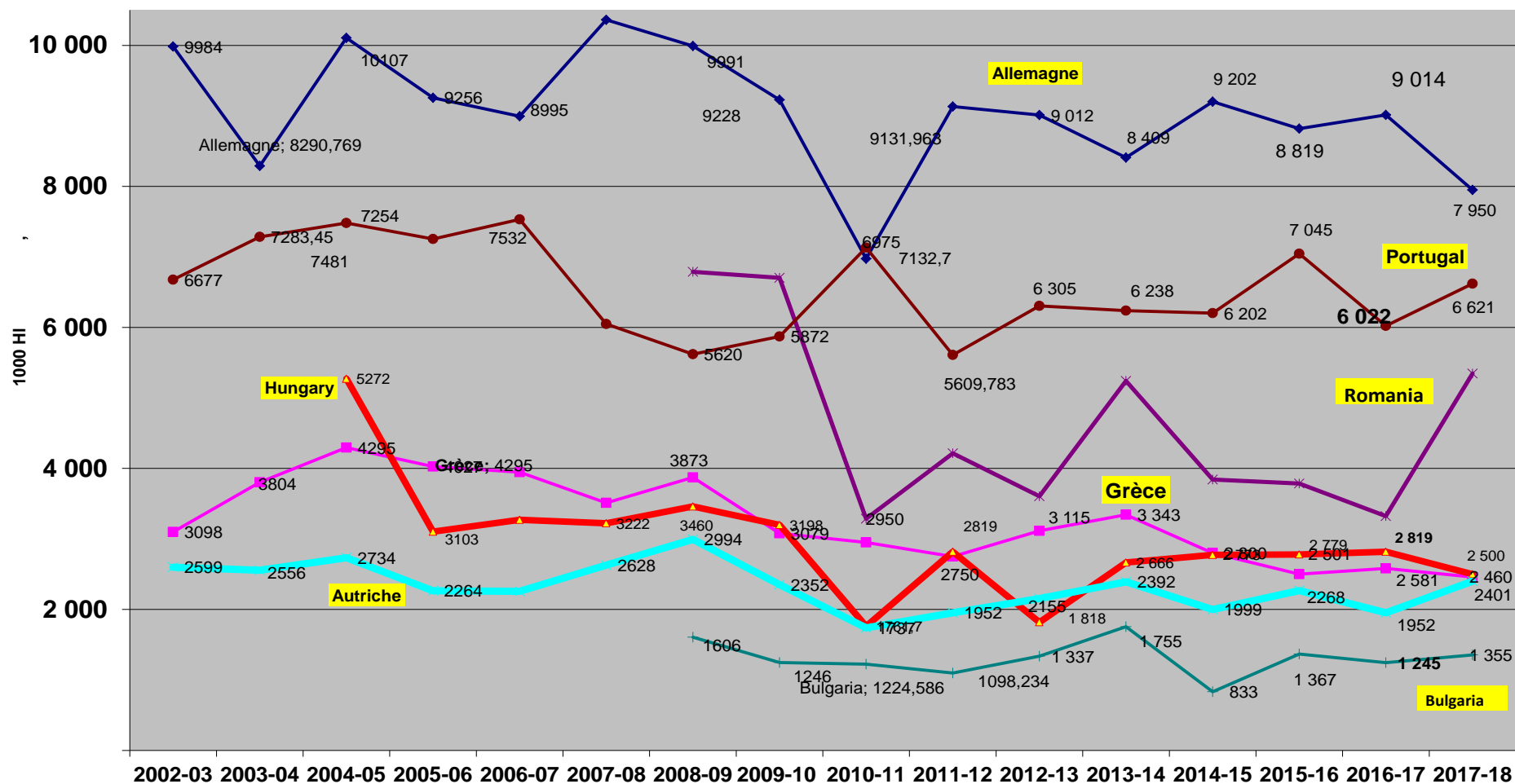
	Campaign 2016-17	5 year Average (AVG5)	2017-2018		
			in 1000 HL	Versus 2016/17	Versus AVG5
Bulgaria	1 245	1 307	1 355	+9%	+4%
Czech Republic	631	595	645	+2%	+8%
Germany	9 014	8 891	7 950	-12%	-11%
Greece	2 581	2 868	2 460	-5%	-14%
Spain	43 360	43 383	36 800	-15%	-15%
France	45 563	44 674	37 200	-18%	-17%
Croatia	773	1 030	608	-21%	-41%
Italy	50 920	49 360	40 023	-21%	-19%
Cyprus	81	95	99	+22%	+4%
Luxembourg	83	101	90	+8%	-11%
Hungary	2 819	2 571	2 500	-11%	-3%
Austria	1 952	2 153	2 401	+23%	+12%
Portugal	6 022	6 362	6 621	+10%	+4%
Romania	3 323	3 960	5 346	+61%	+35%
Slovenia	739	767	586	-21%	-24%
Slovakia	315	334	301	-4%	-10%
U.K.	38	37	30	-21%	-18%
other MS	36	33	36 <sup>4)</sup>	=	+9%
<b>Total EU-28</b>	<b>169 495</b>	<b>168 522</b>	<b>145 100</b>	<b>-14,4%</b>	<b>-14%</b>

## Total EU28 Wine Must Production evolution - SPAIN, FRANCE & ITALY

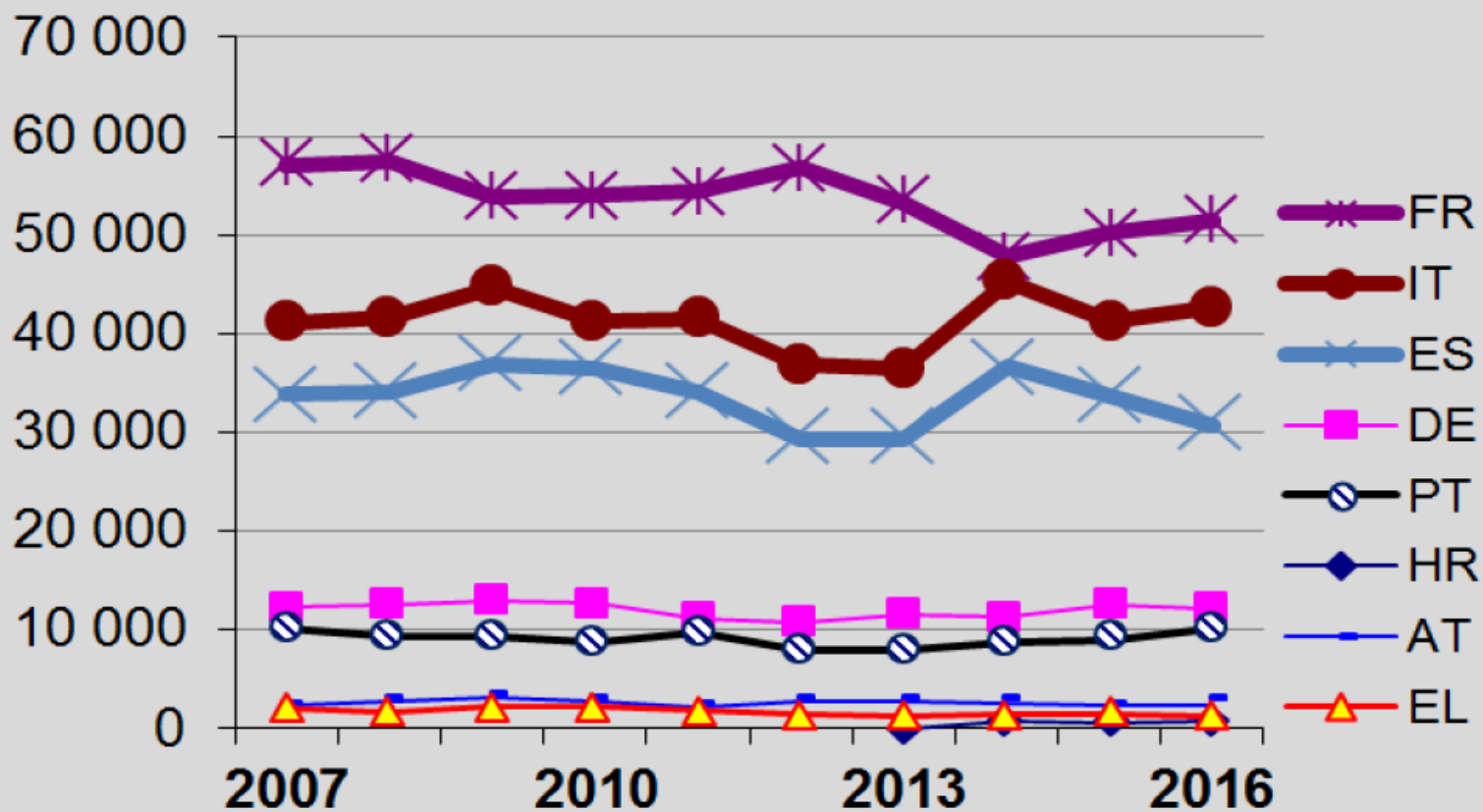
Situation September 29th, 2017



## Total Wine Must Production evolution - GERMANY, RUMANIA, PORTUGAL, HUNGARY, GREECE , AUSTRIA & BULGARIA Situation September 2017



## Opening Stocks by MS (1000 hl)



Source: Member state communication following Art. 19 §1b of Regulation (EU) 2009/436, elaborated by DG AGRI G.2

- **Thank you very much for your attention !**
- **Time for questions and discussion**



GJD

[https://ec.europa.eu/agriculture/sites/agriculture/files/dashboards/wine-dashboard\\_en.pdf](https://ec.europa.eu/agriculture/sites/agriculture/files/dashboards/wine-dashboard_en.pdf)