



# BEEF & VEAL MARKET SITUATION



CMO Committee  
06 April 2017

# LIVESTOCK

# EU EVOLUTION TOTAL BOVINE

JUNE SURVEY



May/Jun	TOT LIVESTOCK				%Var 2016 2015	BOVINE < 1 Year				%Var 2016 2015	BOVINE 1-2 Year				%Var 2016 2015	BOVINE > 2 Year				%Var 2016 2015
1000 Hd	2013	2014	2015	2016		2013	2014	2015	2016		2013	2014	2015	2016		2013	2014	2015	2016	
BE	2 433	2 521	2 531	2 470	-2.4%	689	734	744	728	-2.1%	495	506	504	493	-2.2%	1 248	1 282	1 283	1 248	-2.7%
BG																				
CZ																				
DK	1 603	1 585	1 568	1 583	+1.0%	523	528	524	547	+4.4%	328	318	316	307	-2.8%	752	739	728	730	+0.3%
DE	12 587	12 702	12 653	12 563	-0.7%	3 849	3 874	3 846	3 805	-1.1%	3 011	3 004	3 002	2 983	-0.6%	5 727	5 824	5 805	5 775	-0.5%
EE																				
IE	6 903	6 926	6 964	7 221	+3.7%	1 968	1 878	2 042	2 126	+4.1%	1 811	1 767	1 705	1 853	+8.7%	3 123	3 280	3 216	3 242	+0.8%
EL																				
ES	5 822	6 008	6 234	6 445	+3.4%	2 026	2 172	2 281	2 404	+5.4%	801	795	898	899	+0.1%	2 995	3 041	3 055	3 142	+2.9%
FR	19 179	19 286	19 463	19 559	+0.5%	5 497	5 530	5 603	5 638	+0.6%	3 529	3 476	3 540	3 561	+0.6%	10 153	10 280	10 319	10 362	+0.4%
HR																				
IT	6 053	6 197	6 146	6 183	+0.6%	1 587	1 703	1 670	1 702	+1.9%	1 480	1 445	1 370	1 502	+9.7%	2 986	3 049	3 107	2 979	-4.1%
CY																				
LV																				
LT																				
LU																				
HU																				
MT																				
NL	4 000	4 068	4 134	4 244	+2.7%	1 616	1 643	1 624	1 691	+4.1%	624	634	672	630	-6.3%	1 759	1 791	1 838	1 923	+4.7%
AT	1 939	1 937	1 950	1 933	-0.9%	604	613	622	605	-2.7%	435	424	437	441	+0.8%	900	901	891	887	-0.5%
PL	5 860	5 920	5 961	5 939	-0.4%	1 586	1 609	1 669	1 728	+3.6%	1 422	1 433	1 529	1 576	+3.1%	2 852	2 879	2 763	2 635	-4.6%
PT																				
RO	2 054	2 069	2 078	2 081	+0.2%	478	479	477	481	+0.9%	236	236	235	240	+2.3%	1 340	1 354	1 366	1 360	-0.4%
SI																				
SK																				
FI																				
SE	1 506	1 493	1 476	1 489	+0.9%	468	472	466	475	+2.0%	381	370	372	375	+0.8%	657	651	638	639	+0.1%
UK	9 843	9 837	9 919	10 019	+1.0%	2 808	2 801	2 912	2 984	+2.5%	2 474	2 384	2 380	2 449	+2.9%	4 561	4 652	4 626	4 587	-0.8%
EU	79 781	80 550	81 076	81 730	+0.8%	23 698	24 035	24 481	24 915	+1.8%	17 027	16 792	16 959	17 308	+2.1%	39 055	39 722	39 635	39 509	-0.3%

Source : EStat Newcronos

EU %Var is calculated considering only countries available in 2015 AND 2016

6 April 2017

Agriculture  
and Rural  
Development

# LIVESTOCK

# EU EVOLUTION TOTAL BOVINE

JUNE SURVEY



European  
Commission

May/Jun 1000 Hd	TOTAL COWS				%Var 2016 2015	DAIRY COWS				%Var 2016 2015	OTHER COWS				%Var 2016 2015
	2013	2014	2015	2016		2013	2014	2015	2016		2013	2014	2015	2016	
BE	1 007	971	987	971	-1.6%	510	522	524	522	-0.4%	498	449	463	449	-3.0%
BG															
CZ															
DK	678	664	661	669	+1.2%	576	563	561	572	+2.0%	102	101	99	97	-2.0%
DE	4 896	4 981	4 969	4 957	-0.2%	4 223	4 311	4 287	4 272	-0.3%	673	670	682	685	+0.4%
EE															
IE	2 313	2 355	2 372	2 502	+5.5%	1 163	1 226	1 296	1 398	+7.9%	1 150	1 129	1 076	1 104	+2.6%
EL															
ES	2 595	2 716	2 678	2 810	+4.9%	823	876	853	827	-3.0%	1 772	1 840	1 825	1 983	+8.7%
FR	7 682	7 759	7 809	7 838	+0.4%	3 545	3 615	3 606	3 576	-0.8%	4 137	4 144	4 203	4 263	+1.4%
HR															
IT	2 381	2 382	2 375	2 245	-5.5%	1 989	2 053	2 061	1 948	-5.5%	392	329	314	297	-5.4%
CY															
LV															
LT															
LU															
HU															
MT															
NL	1 637	1 655	1 702	1 811	+6.4%	1 553	1 572	1 622	1 743	+7.5%	84	82	80	68	-15.4%
AT	769	770	762	755	-0.9%	524	534	540	536	-0.6%	245	236	222	218	-1.8%
PL	2 531	2 479	2 444	2 332	-4.6%	2 361	2 310	2 279	2 146	-5.8%	170	169	165	186	+12.6%
PT															
RO	1 222	1 224	1 233	1 228	-0.4%	1 208	1 207	1 216	1 216	-0.0%	13	17	17	12	-29.4%
SI															
SK															
FI															
SE	539	531	523	525	+0.4%	346	344	338	331	-2.2%	193	186	184	194	+5.1%
UK	3 393	3 411	3 472	3 490	+0.5%	1 782	1 841	1 895	1 895	idem	1 611	1 569	1 576	1 594	+1.1%
EU	31 642	31 899	31 987	32 132	+0.5%	20 603	20 976	21 078	20 981	-0.5%	11 040	10 922	10 907	11 150	+2.2%

Source : EStat Newcronos

EU %Var is calculated considering only countries available in 2015 AND 2016

6 April 2017

Agriculture  
and Rural  
Development

# LIVESTOCK

# EU EVOLUTION TOTAL BOVINE

DECEMBER SURVEY



European  
Commission

Dec 1000 Hd	TOTAL LIVESTOCK				%Var 2016 2015	BOVINE < 1 Year				%Var 2016 2015	BOVINE 1-2 Year				%Var 2016 2015	BOVINE > 2 Year				%Var 2016 2015
	2013	2014	2015	2016		2013	2014	2015	2016		2013	2014	2015	2016		2013	2014	2015	2016	
BE	2 441	2 477	2 503	2 499	-0.2%	718	745	749	748	-0.1%	490	490	493	491	-0.4%	1 234	1 243	1 261	1 259	-0.2%
BG	586	562	561	571	+1.8%	150	121	109	120	+10.2%	62	65	64	63	-1.0%	374	376	388	388	-0.0%
CZ	1 332	1 373	1 366	1 340	-2.0%	390	413	403	397	-1.6%	300	311	309	295	-4.6%	642	649	654	648	-0.9%
DK	1 583	1 553	1 566	1 554	-0.8%	528	534	538	540	+0.4%	319	307	302	298	-1.3%	736	713	726	715	-1.5%
DE	12 686	12 742	12 635	12 467	-1.3%	3 878	3 909	3 836	3 795	-1.1%	3 015	3 011	2 993	2 960	-1.1%	5 793	5 823	5 806	5 712	-1.6%
EE	261	265	256	249	-3.0%	71	73	70	68	-3.6%	54	54	53	50	-4.6%	137	138	133	131	-2.1%
IE	6 309	6 243	6 422	6 613	+3.0%	1 893	1 886	2 026	2 077	+2.5%	1 714	1 649	1 660	1 778	+7.1%	2 701	2 709	2 737	2 759	+0.8%
EL	653	659	582	580	-0.3%	167	176	154	151	-1.9%	129	119	103	107	+3.9%	357	365	325	324	-0.3%
ES	5 802	6 079	6 183	6 255	+1.2%	2 068	2 302	2 325	2 360	+1.5%	735	746	786	795	+1.1%	2 999	3 031	3 072	3 099	+0.9%
FR	19 129	19 271	19 406	19 004	-2.1%	5 453	5 546	5 618	5 138	-8.5%	3 441	3 418	3 461	3 493	+0.9%	10 235	10 307	10 327	10 372	+0.4%
HR	442	441	455	462	+1.5%	145	132	148	154	+4.1%	92	88	88	89	+1.1%	205	221	219	219	idem
IT	6 249	6 125	6 156	6 315	+2.6%	1 680	1 654	1 678	1 745	+4.0%	1 457	1 366	1 379	1 448	+5.0%	3 112	3 106	3 099	3 122	+0.7%
CY	57	60	59			21	22	21			9	10	9			27	28	29		
LV	406	422	419	412	-1.6%	109	118	114	113	-0.5%	75	75	76	73	-4.8%	222	229	229	227	-1.1%
LT	714	737	723	695	-3.9%	187	192	185	179	-3.2%	144	149	152	142	-6.3%	383	395	385	373	-3.2%
LU	198	201	201	202	+0.9%	55	54	54	54	+1.2%	45	47	45	44	-0.5%	98	100	102	104	+1.3%
HU	782	802	821	838	+2.1%	212	219	220	232	+5.5%	179	176	180	173	-3.9%	393	407	421	434	+3.1%
MT	15	15	15	14	-4.4%	4	4	4	4	-6.9%	4	3	4	3	-12.6%	7	7	7	7	+1.2%
NL	4 090	4 169	4 315	4 294	-0.5%	1 653	1 676	1 707	1 666	-2.4%	627	657	660	644	-2.4%	1 810	1 836	1 948	1 985	+1.9%
AT	1 958	1 961	1 958	1 954	-0.2%	627	629	624	632	+1.2%	435	432	439	432	-1.6%	897	899	894	890	-0.4%
PL	5 590	5 660	5 763	5 985	+3.9%	1 409	1 450	1 617	1 718	+6.2%	1 372	1 445	1 532	1 637	+6.9%	2 809	2 765	2 614	2 630	+0.6%
PT	1 471	1 549	1 606	1 635	+1.8%	425	487	510	499	-2.1%	211	214	240	267	+11.0%	834	848	856	869	+1.6%
RO	2 022	2 069	2 092	2 058	-1.7%	454	463	475	466	-1.9%	238	254	261	257	-1.8%	1 331	1 352	1 357	1 335	-1.6%
SI	461	468	484	489	+1.0%	144	148	153	155	+1.7%	123	122	129	131	+1.1%	194	198	202	203	+0.3%
SK	468	466	457	449	-1.7%	133	130	130	131	+1.0%	98	93	91	85	-6.4%	238	243	236	233	-1.3%
FI	903	907	903	887	-1.8%	302	307	308	302	-1.9%	224	223	221	218	-1.3%	378	378	374	367	-2.0%
SE	1 444	1 436	1 428	1 436	+0.5%	469	473	467	468	+0.2%	342	334	342	344	+0.6%	632	629	619	624	+0.8%
UK	9 682	9 693	9 816	9 942	+1.3%	2 803	2 842	2 967	3 046	+2.7%	2 411	2 332	2 372	2 468	+4.0%	4 468	4 520	4 477	4 429	-1.1%
EU	87 734	88 406	89 152	89 199	+0.1%	26 148	26 705	27 209	26 958	-0.8%	18 342	18 189	18 445	18 786	+1.9%	43 246	43 514	43 498	43 458	-0.0%

Source : EStat Newcronos

EU %Var is calculated considering only countries available in 2015 AND 2016

6 April 2017

Agriculture  
and Rural  
Development

# LIVESTOCK

DECEMBER SURVEY



European  
Commission

# EU EVOLUTION COWS

Dec 1000 Hd	TOTAL COWS				%Var 2016 2015	DAIRY COWS				%Var 2016 2015	OTHER COWS				%Var 2016 2015
	2013	2014	2015	2016		2013	2014	2015	2016		2013	2014	2015	2016	
BE	945	956	974	987	+1.3%	516	519	529	530	+0.2%	429	436	445	457	+2.6%
BG	353	351	359	365	+1.7%	313	302	283	280	-1.2%	40	49	76	86	+12.4%
CZ	553	566	566	561	-1.0%	375	372	369	367	-0.5%	178	194	197	193	-1.9%
DK	664	643	664	657	-1.1%	567	547	570	565	-0.9%	97	96	94	92	-2.1%
DE	4 941	4 969	4 966	4 887	-1.6%	4 268	4 296	4 285	4 218	-1.6%	673	674	681	670	-1.7%
EE	118	118	116	114	-1.4%	98	96	91	86	-4.7%	20	23	25	28	+10.8%
IE	2 168	2 169	2 293	2 337	+1.9%	1 082	1 128	1 240	1 295	+4.5%	1 085	1 041	1 053	1 042	-1.1%
EL	289	305	274	269	-1.8%	130	135	111	113	+1.8%	159	169	163	156	-4.3%
ES	2 633	2 669	2 763	2 780	+0.6%	844	845	844	820	-2.9%	1 789	1 824	1 919	1 960	+2.2%
FR	7 804	7 841	7 872	7 856	-0.2%	3 697	3 699	3 661	3 630	-0.8%	4 106	4 142	4 211	4 225	+0.3%
HR	181	180	171	167	-2.3%	168	159	152	147	-3.3%	13	21	19	20	+5.3%
IT	2 410	2 398	2 386	2 365	-0.9%	2 075	2 069	2 057	2 060	+0.2%	335	329	329	305	-7.5%
CY	25	25	26			25	25	26			0	0	0		
LV	194	200	201	199	-1.3%	165	166	162	154	-5.2%	29	34	39	45	+15.0%
LT	345	351	343	333	-2.9%	316	314	301	286	-4.9%	29	37	43	47	+11.0%
LU	78	75	77	80	+3.2%	48	47	49	52	+5.8%	30	29	28	28	-1.3%
HU	345	359	368	379	+3.0%	250	255	251	242	-3.6%	96	104	117	137	+17.1%
MT	6	7	7	7	+1.7%	6	7	6	6	+2.0%	1	0	0	0	-11.5%
NL	1 683	1 694	1 802	1 864	+3.4%	1 597	1 610	1 717	1 794	+4.5%	86	84	85	70	-17.6%
AT	766	768	758	757	-0.3%	530	538	534	540	+1.1%	237	230	224	217	-3.4%
PL	2 442	2 403	2 303	2 334	+1.4%	2 299	2 248	2 134	2 161	+1.2%	143	155	169	174	+2.9%
PT	677	697	719	724	+0.7%	231	234	243	239	-1.8%	446	463	476	485	+1.9%
RO	1 187	1 207	1 207	1 189	-1.6%	1 169	1 188	1 191	1 173	-1.5%	18	18	17	16	-4.2%
SI	166	168	170	171	+0.9%	110	108	113	108	-4.4%	56	60	57	64	+11.4%
SK	199	202	200	195	-2.1%	145	143	139	133	-4.6%	54	59	60	62	+3.6%
FI	338	340	339	333	-1.9%	282	283	282	275	-2.4%	56	57	57	57	+0.5%
SE	522	517	513	514	+0.2%	346	344	337	326	-3.2%	175	173	176	188	+6.7%
UK	3 371	3 419	3 469	3 490	+0.6%	1 817	1 883	1 918	1 920	+0.1%	1 554	1 536	1 551	1 570	+1.2%
EU	35 401	35 596	35 907	35 913	+0.1%	23 468	23 559	23 595	23 519	-0.2%	11 934	12 037	12 312	12 393	+0.7%

6 April 2017

Source : EStat Newcronos

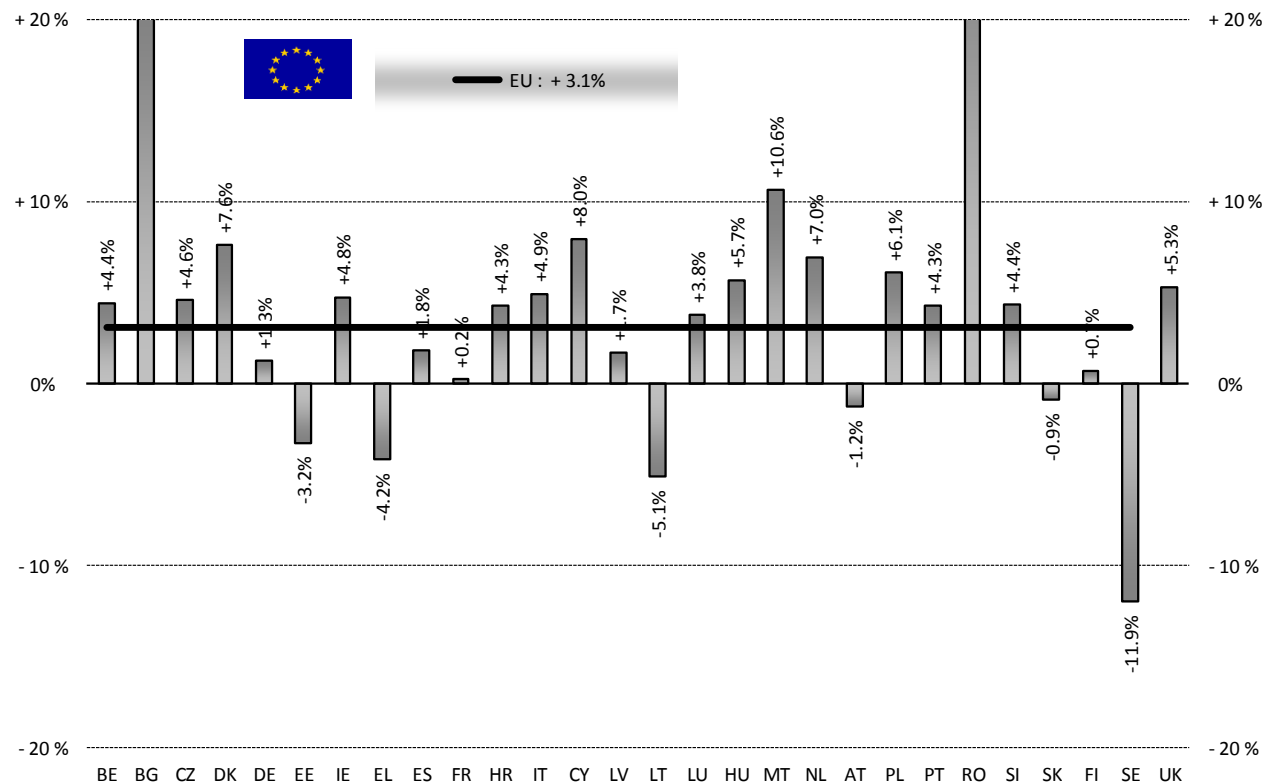
Agriculture  
and Rural  
Development

EU %Var is calculated considering only countries available in 2015 AND 2016



HEADS	Jan-Dec 15/16	
	EU15	EU28
Bull	-1.7%	-1.2%
Bullock	+0.8%	+0.8%
Cow	+6.2%	+7.0%
Heifer	+5.7%	+6.1%
Calve	+2.4%	+2.3%
Young cattle	+0.8%	+1.6%
Meat of bovine animals	+2.7%	+3.1%

Estimates for last month of period :



Source : EStat - Newcronos

6 April 2017

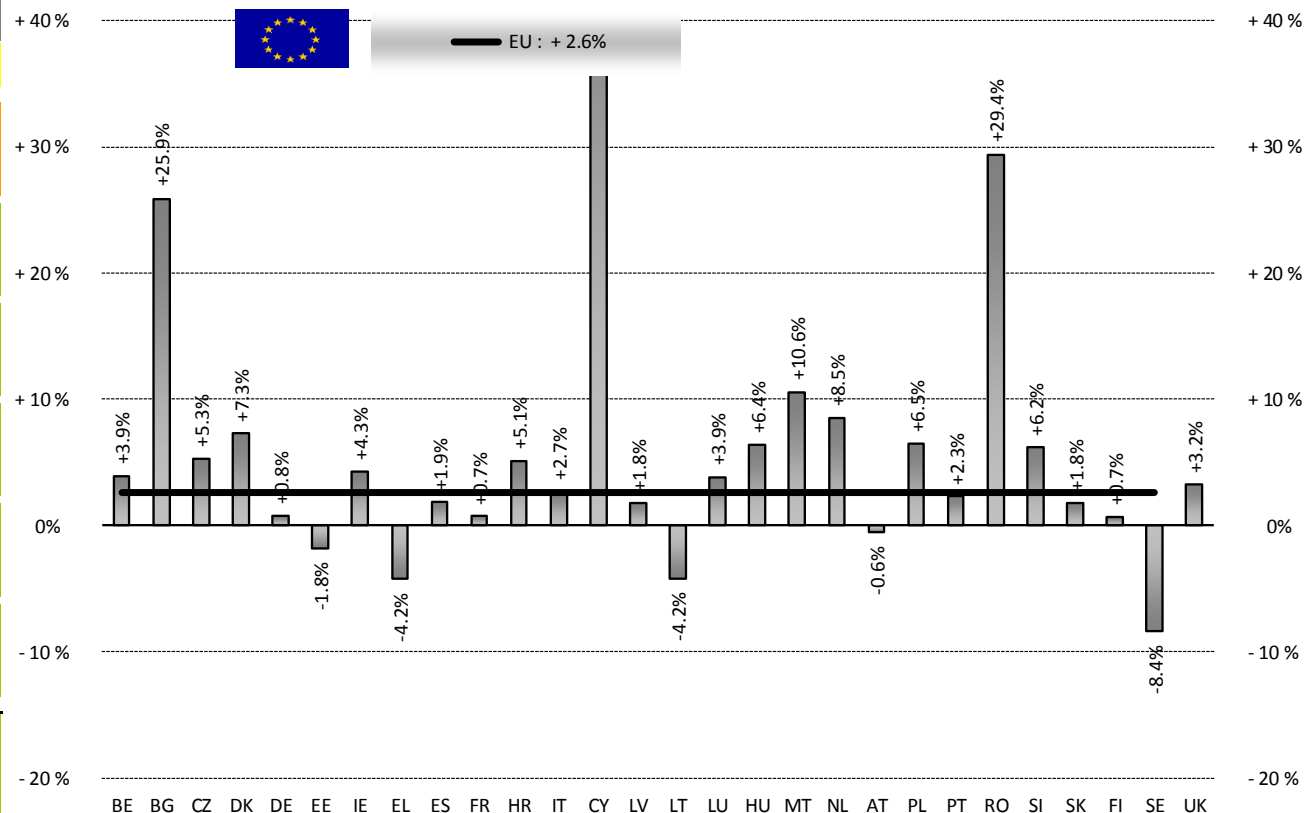
# PRODUCTION

# % EVOLUTION TONNES



TONNES	Jan-Dec 15/16	
	EU15	EU28
Bull	-1.5%	-0.9%
Bullock	+0.8%	+0.7%
Cow	+5.1%	+5.8%
Heifer	+4.6%	+5.1%
Calve	+3.1%	+3.1%
Young cattle	+1.0%	+2.0%
Meat of bovine animals	+2.1%	+2.6%

Estimates for last month of period :

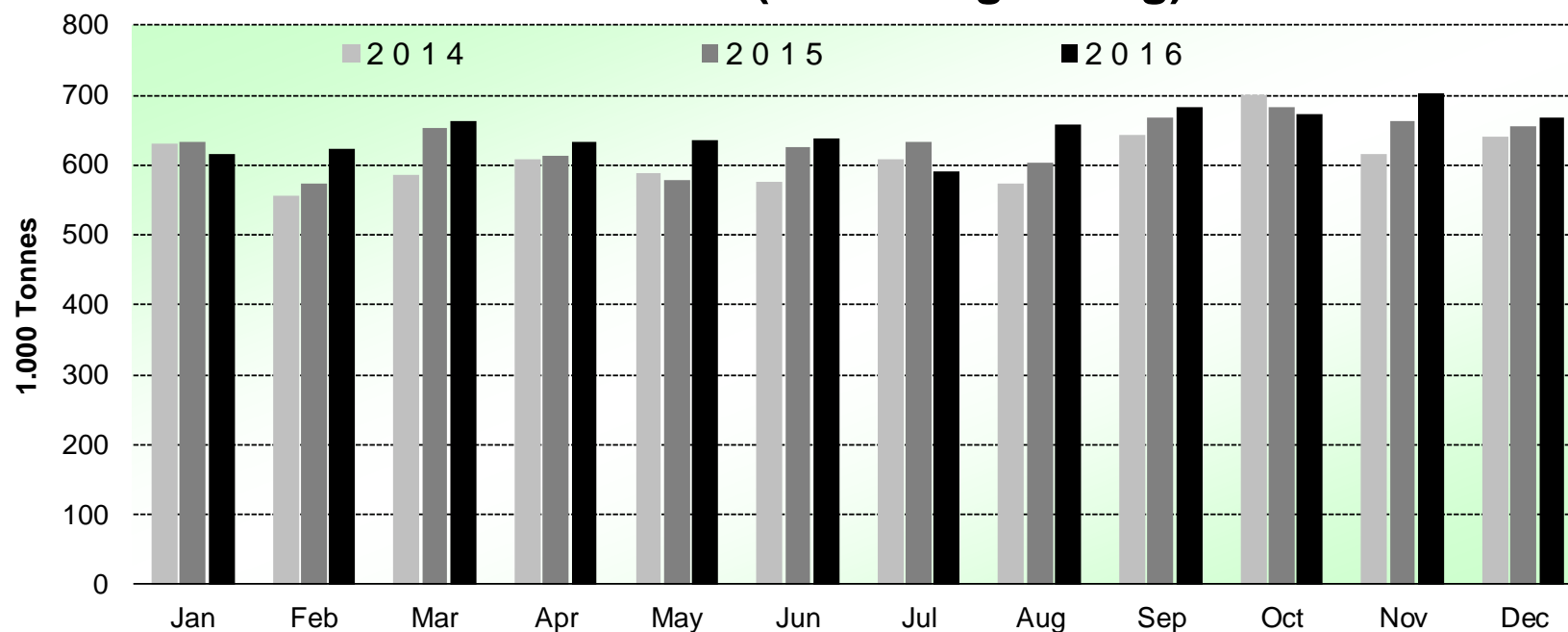


Source : EStat - Newcronos

6 April 2017



## Beef & Veal Production (E28 Slaughtering) - Tonnes



Source : EStat-Newcronos

6 April 2017



# PRICES CARCASSES

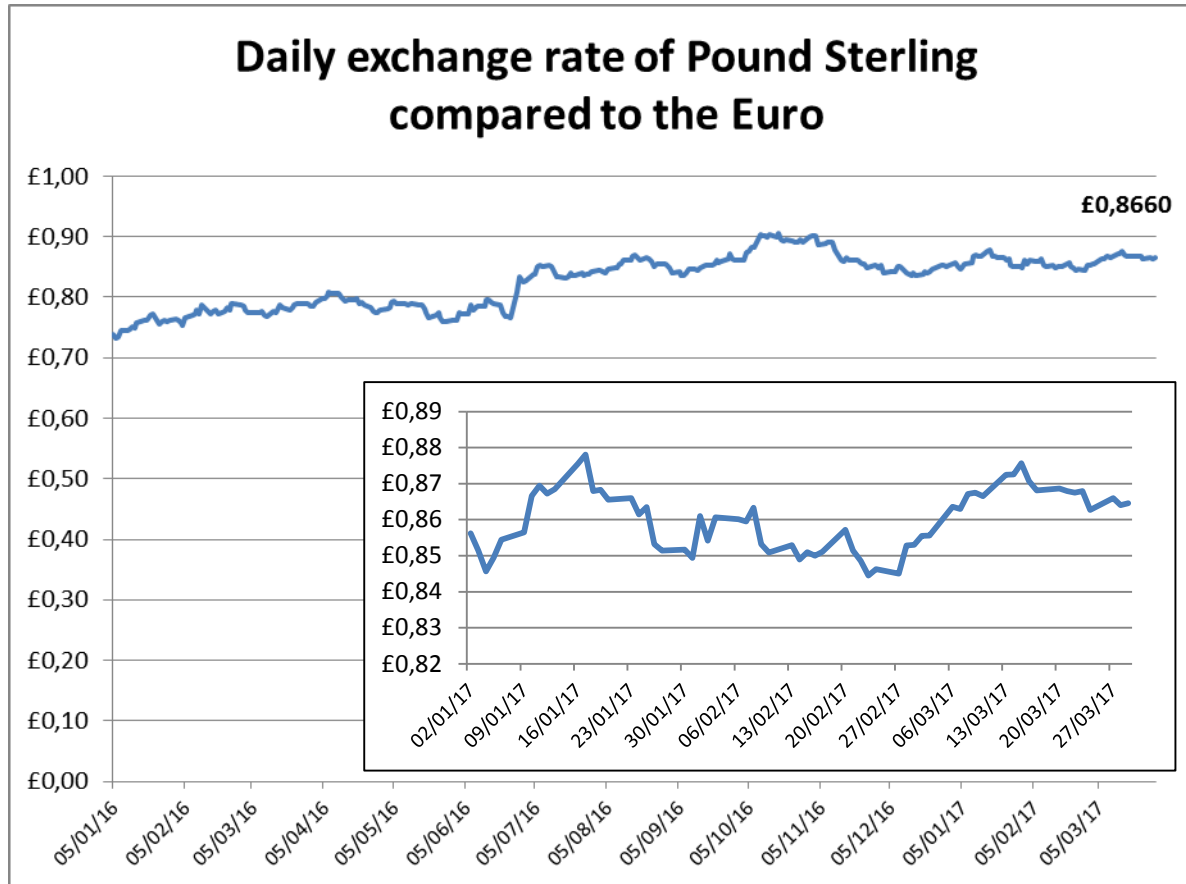
## Dashboard



EU Prices week		12	Evolution since last week		Evolution since last month	Evolution since last year
Carcasse	Average A/C/Z -R3	371.0	€/100 kg	- 0.4%	- 1.2%	- 0.1%
	Young Bovines (Z)	381.2		- 0.1%	- 1.6%	- 0.1%
	Young Bulls (A)	371.		- 0.6%	- 1.1%	+ 0.5%
	Steers (C)	394.8		+ 0.6%	- 0.8%	- 1.3%
	Cows (D)	281.6		+ 0.3%	+ 1.1%	+ 2.6%
	Heifers (E)	382.0		- 0.1%	- 0.1%	- 0.2%
Live Animals	Male Calves Dairy Type	95.70	€/head	+ 5.1%	+ 12.8%	+ 13.4%
	Male Calves Beef Type	215.7		+ 2.8%	+ 2.2%	+ 2.8%
	Young Store Cattle	2.42	€/kg	+ 0.4%	+ 1.8%	+ 0.4%
	Yearling Male Store Cattle	2.29		- 0.7%	- 1.3%	- 2.3%
	Yearling Female Store Cattle	2.30		- 1.0%	+ 0.4%	+ 0.3%
	Calves slaughtered <8M	521.9	€/100	- 0.1%	- 0.8%	- 3.2%

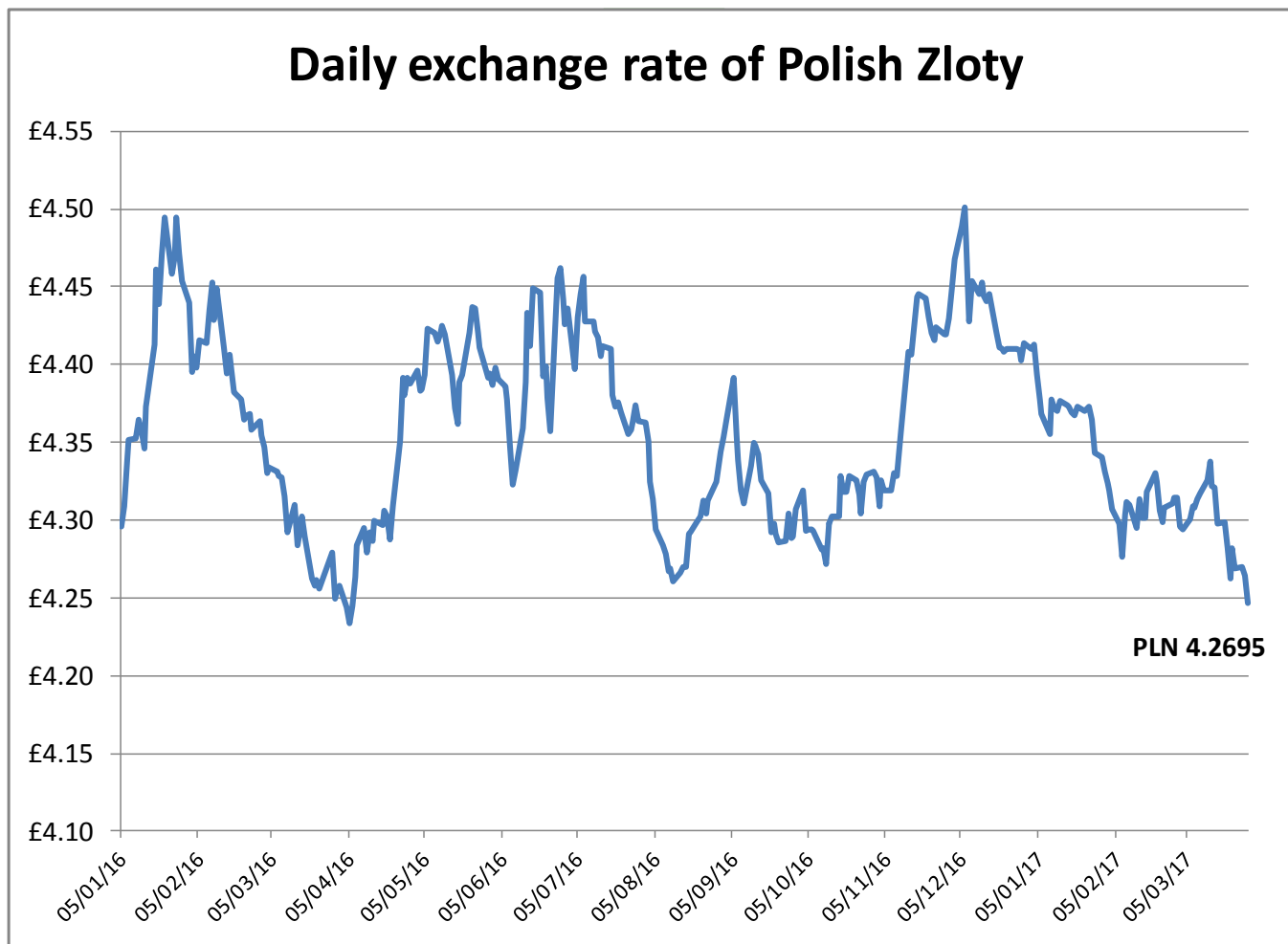
Sources : MSs notifications (Regulation (EC) 1249/2008 and 807/2013)

6 April 2017



Source : ECB

6 April 2017



Source : ECB

6 April 2017

# PRICES CARCASSES

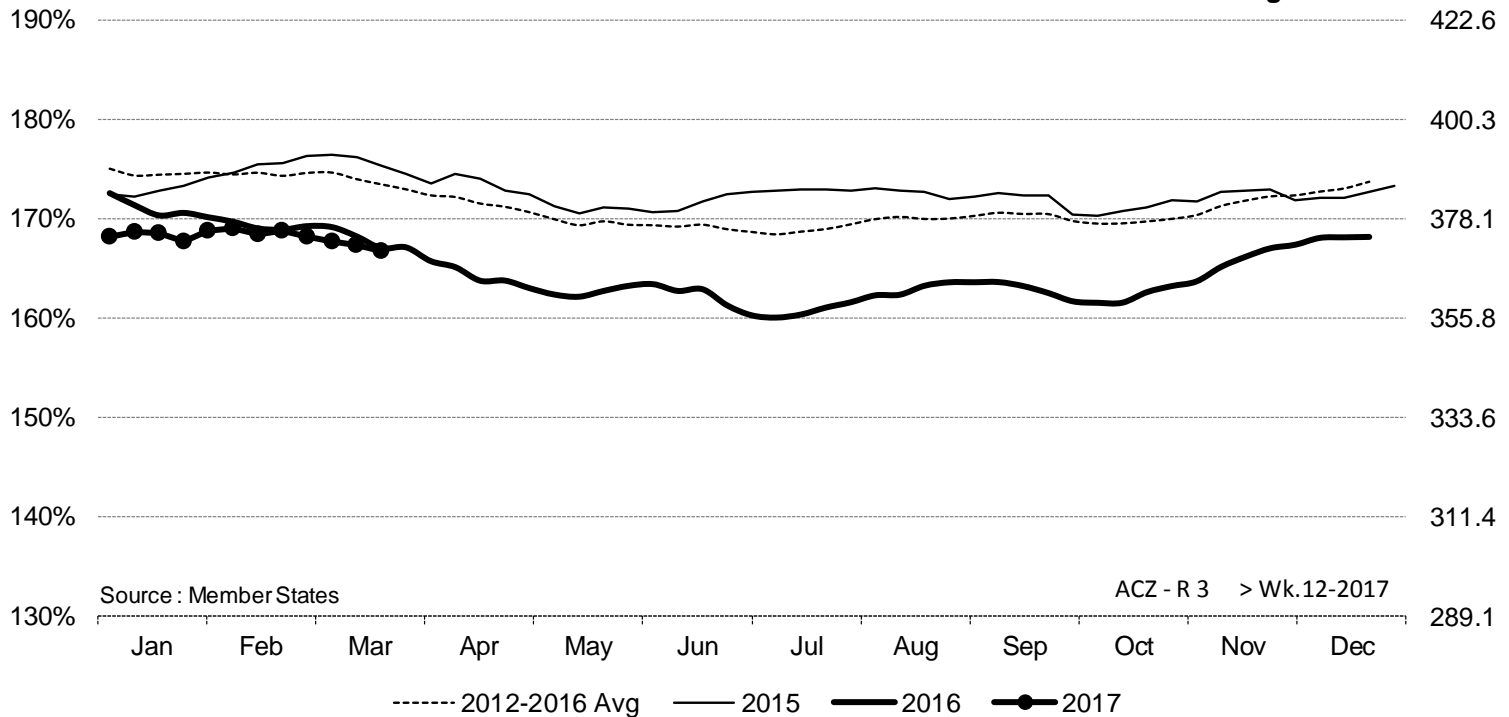


# EU EVOLUTION A/C/Z.R3

ACZ - R 3 > Wk.12-2017

% of Reference Price

€/100 kg cwe



Price in week 12 : **371.06**

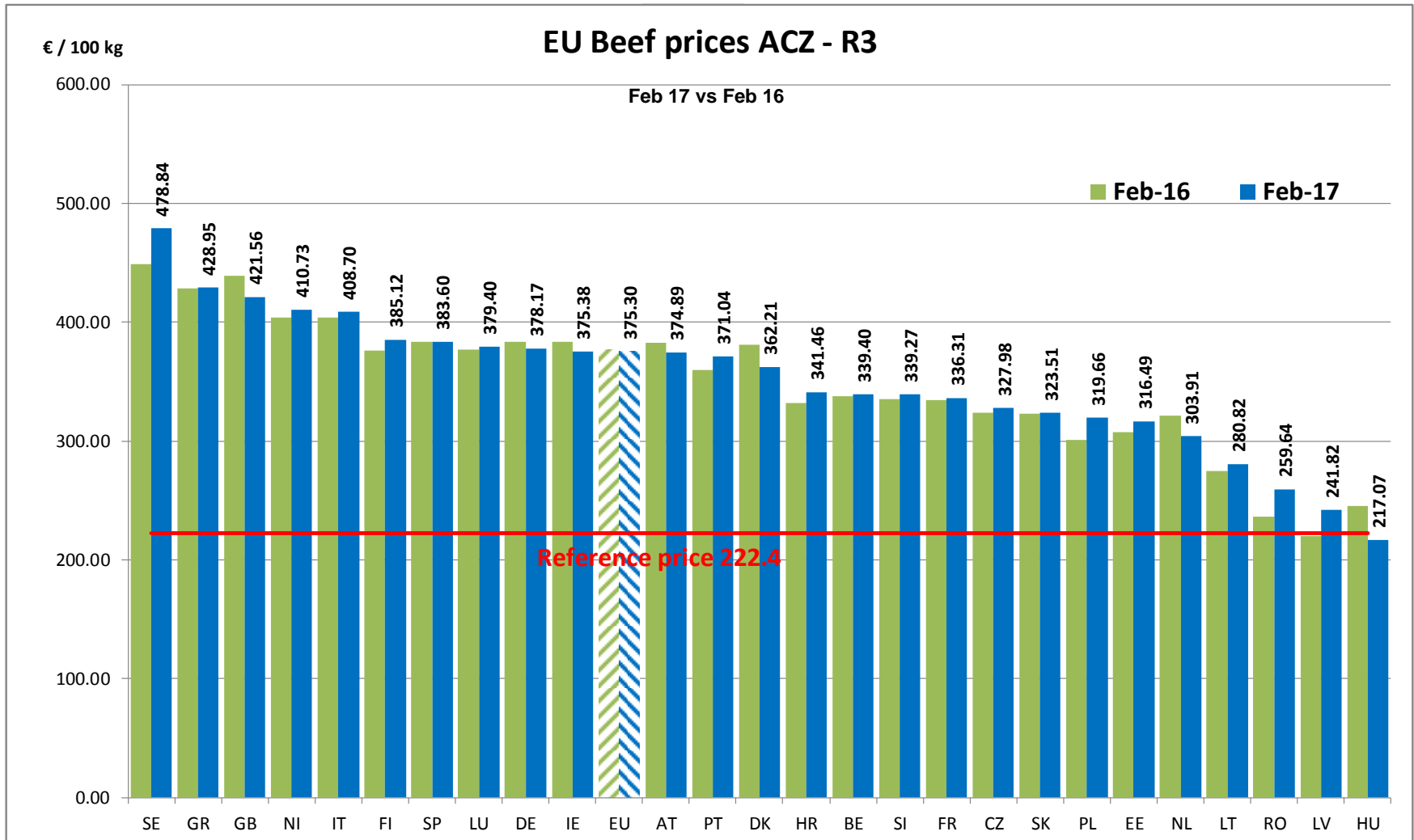
% change y/y : **- 0.1%**

% Ref. Price in wk 12 : **166.8%**

Average price in February 2017 : **376.92**

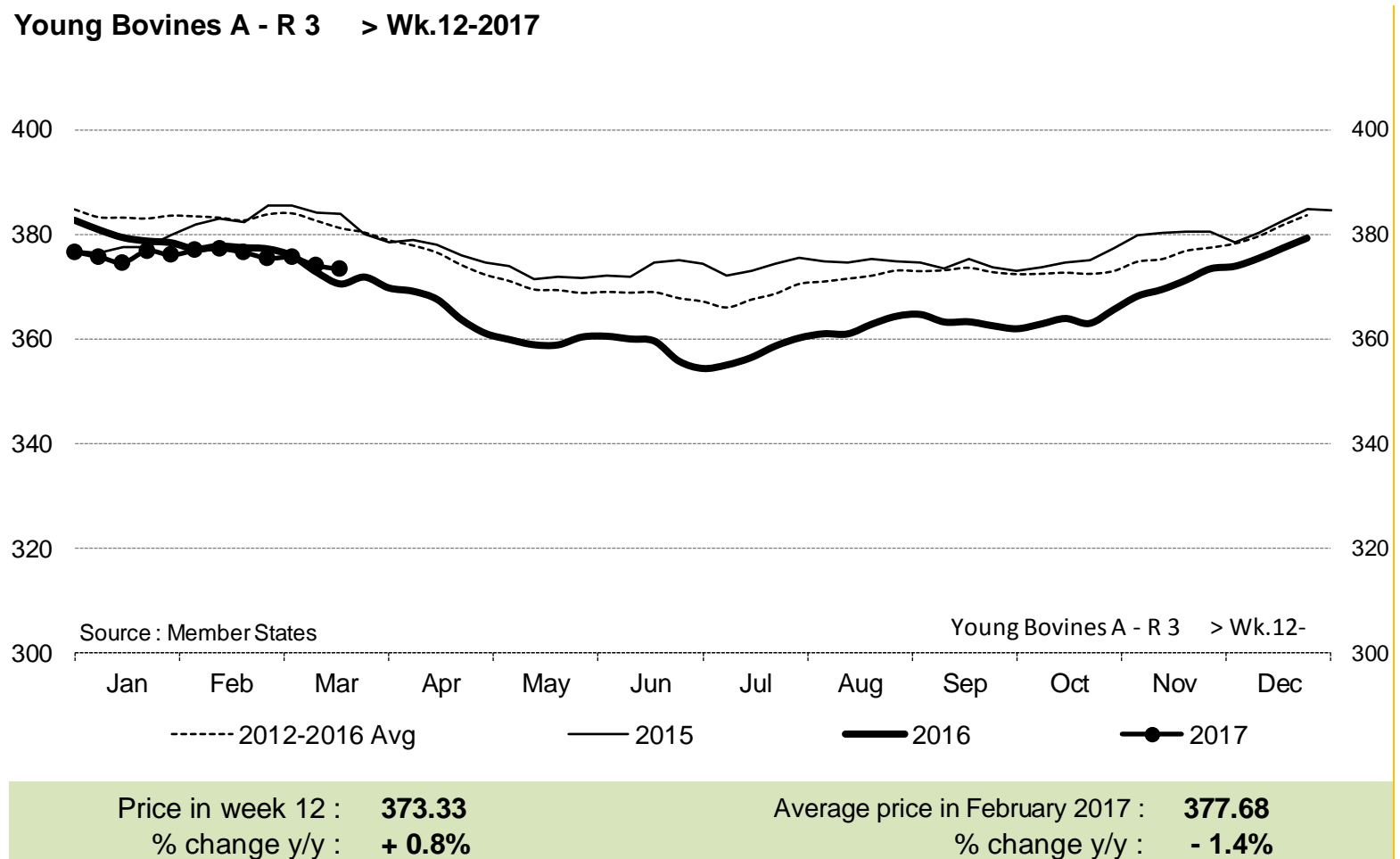
% change y/y : **- 3.4%**

6 April 2017



6 April 2017

## Young Bovines A - R 3 > Wk.12-2017



6 April 2017

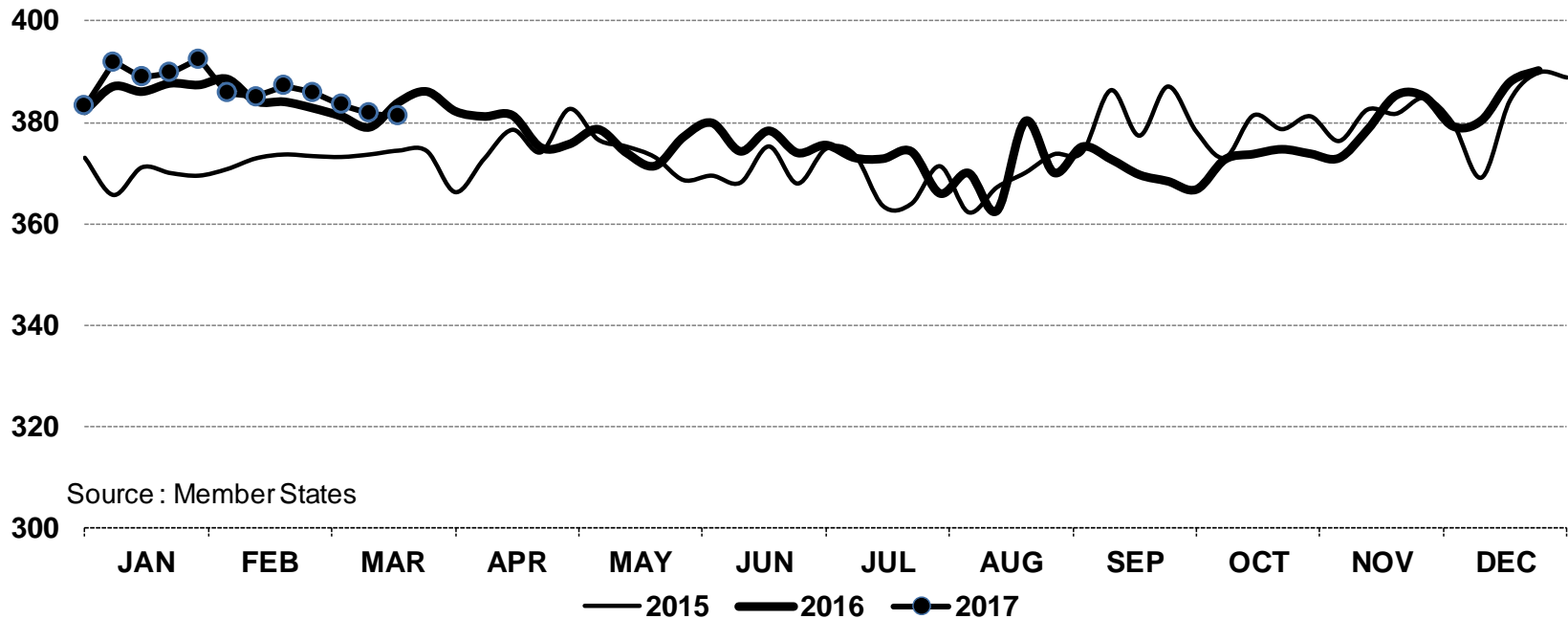
# PRICES CARCASSES



# E.U. EVOLUTION YOUNG BOVINE 8-12M- Z.R3

In € / 100 kg

Young Bovines 8-12m Z - R 3 > Wk.12-2017



Price in week 12 : **381.23**  
% change y/y : **- 0.7%**

Average price in February 2017 : **385.94**  
% change y/y : **+ 3.6%**

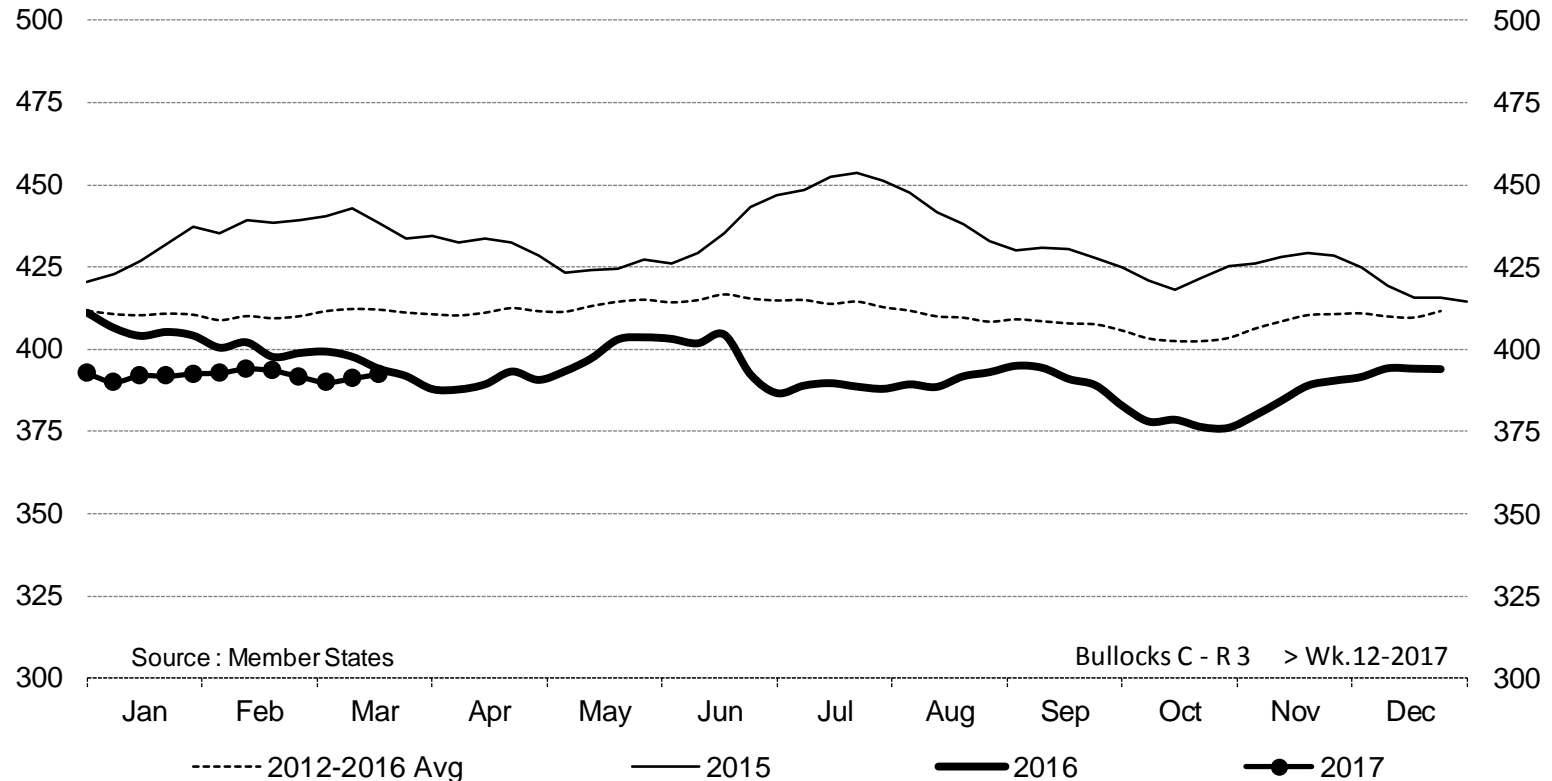
6 April 2017

# PRICES CARCASSES



# E.U. EVOLUTION STEER – C.R3

## Bullocks C - R 3 > Wk.12-2017



Price in week 12 : **392.45**  
% change y/y : **- 0.4%**

Average price in February 2017 : **401.01**  
% change y/y : **- 8.4%**

6 April 2017

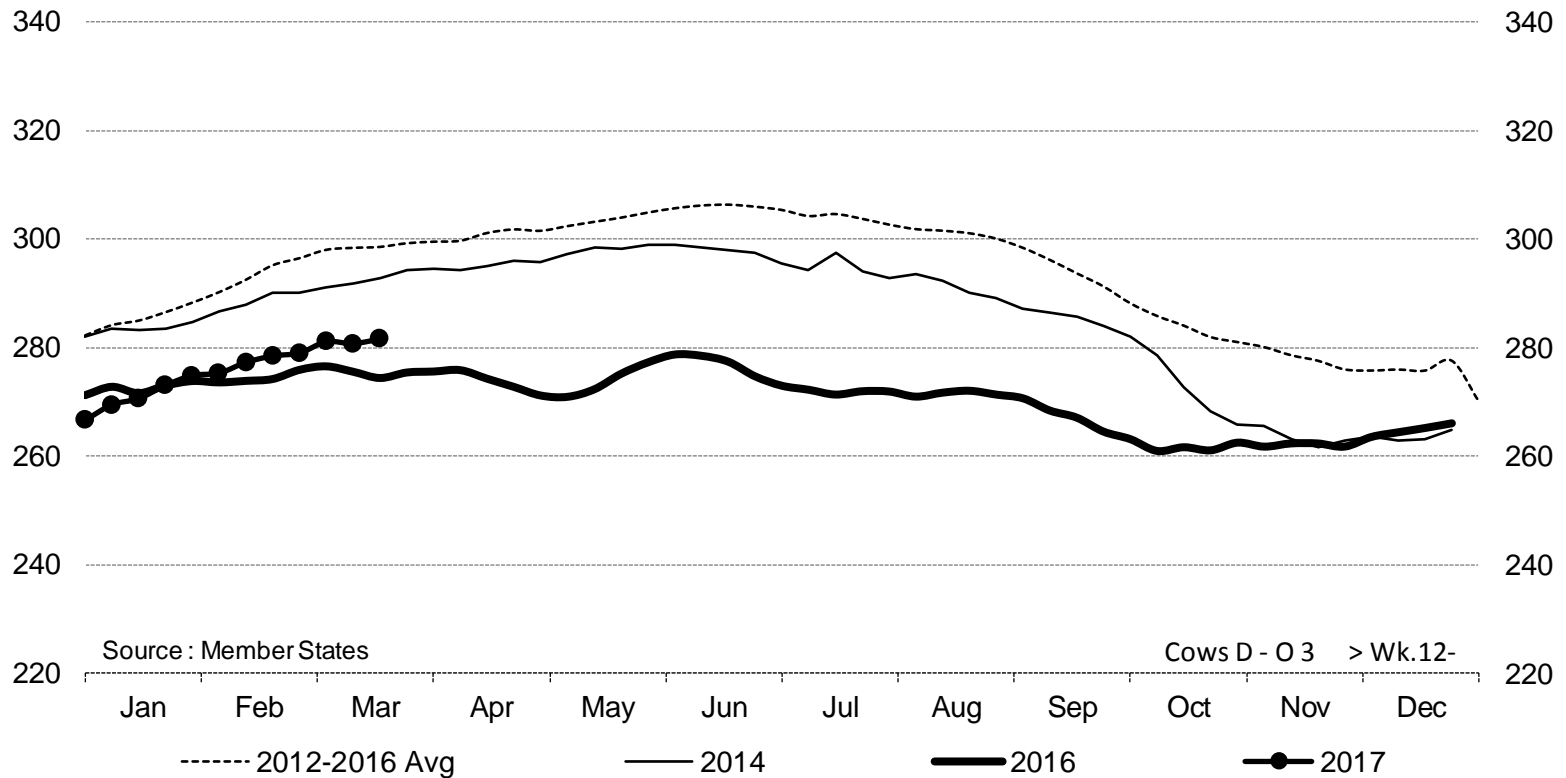


# PRICES CARCASSES



E.U. EVOLUTION  
COW – D.O3

Cows D - O 3 > Wk.12-2017

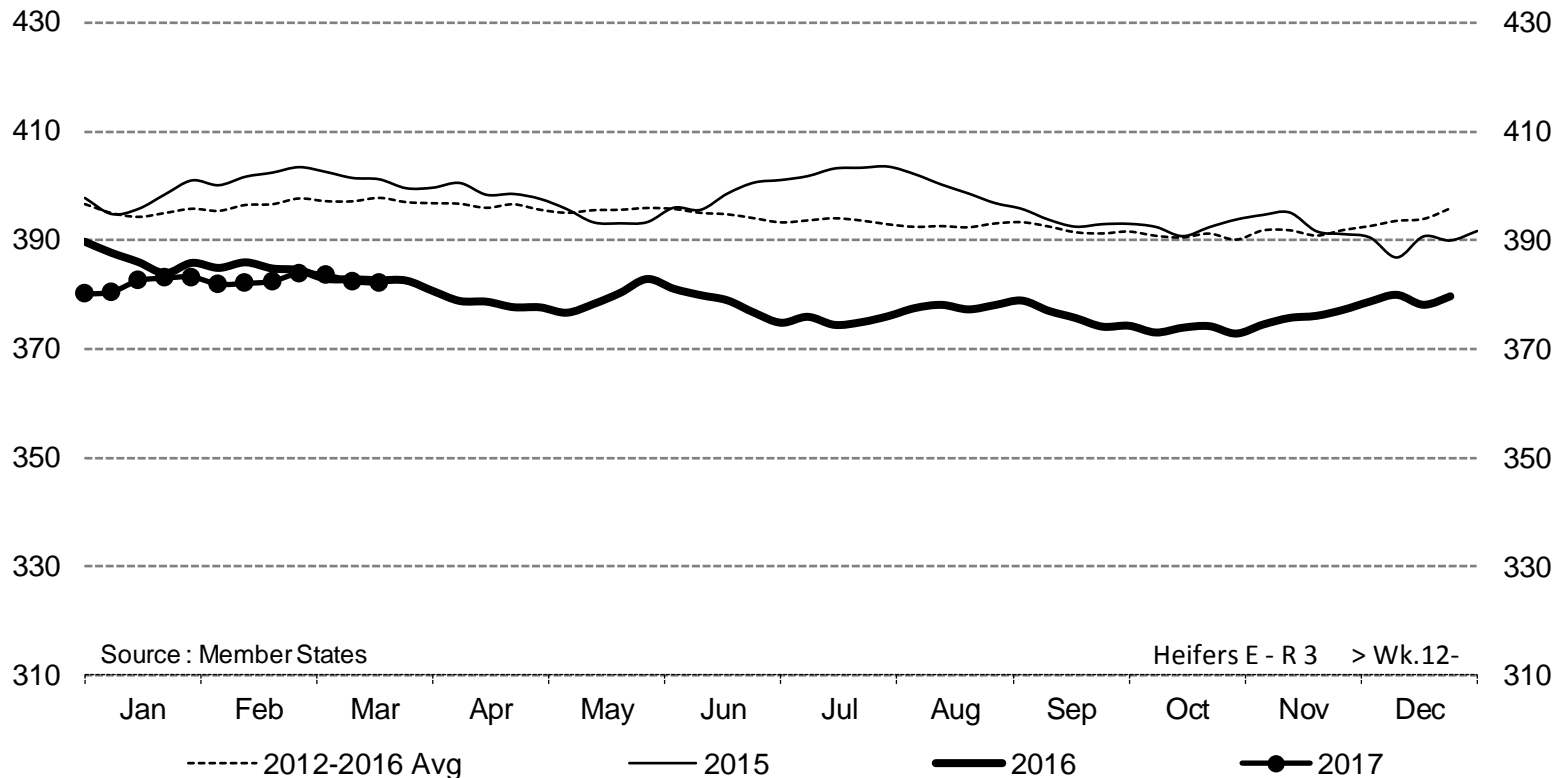


Price in week 12 : **281.61**  
% change y/y : **+ 2.6%**

Average price in February 2017 : **273.98**  
% change y/y : **- 3.5%**

6 April 2017

## Heifers E - R 3 > Wk.12-2017

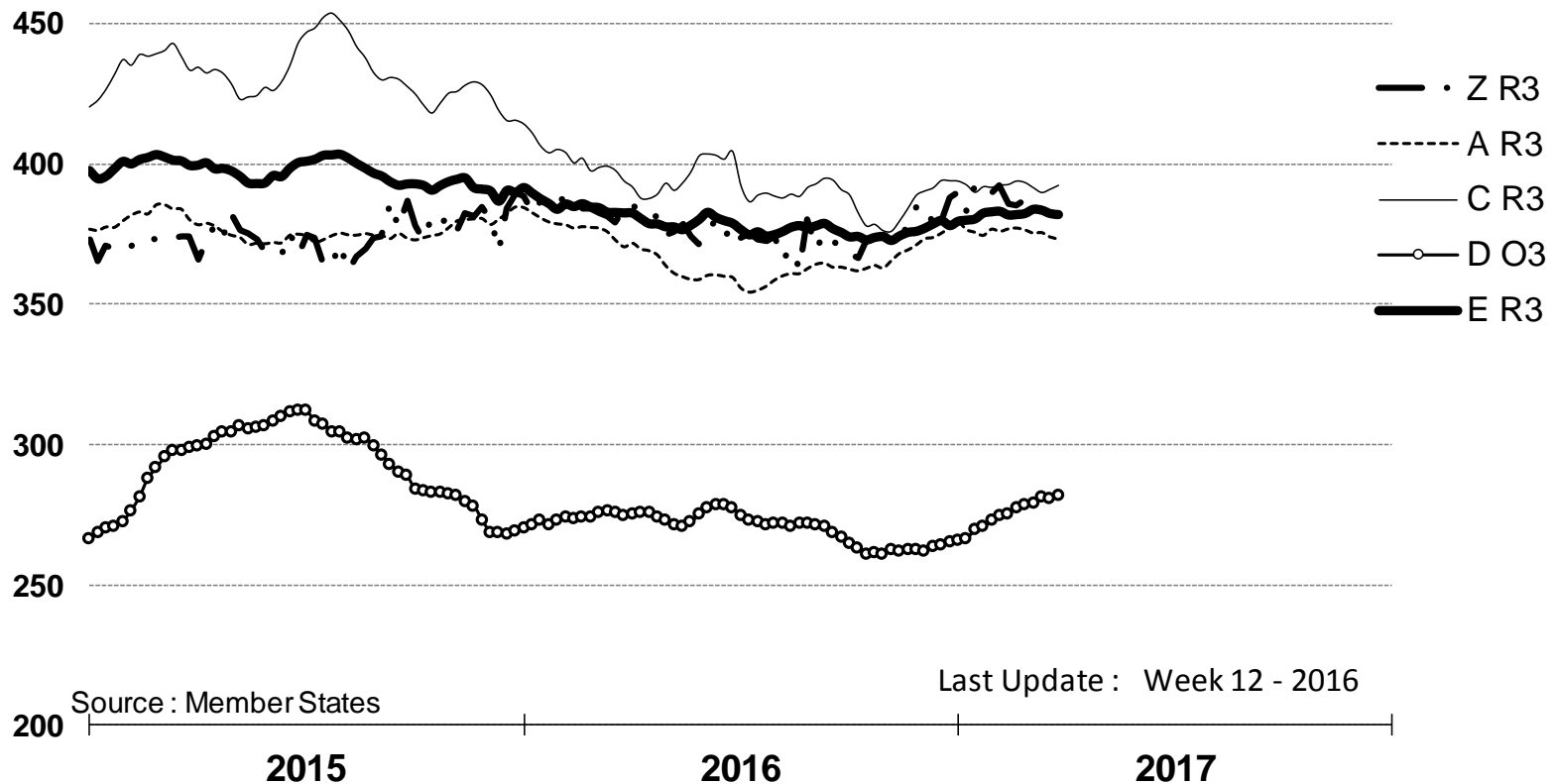


6 April 2017

# PRICES CARCASSES

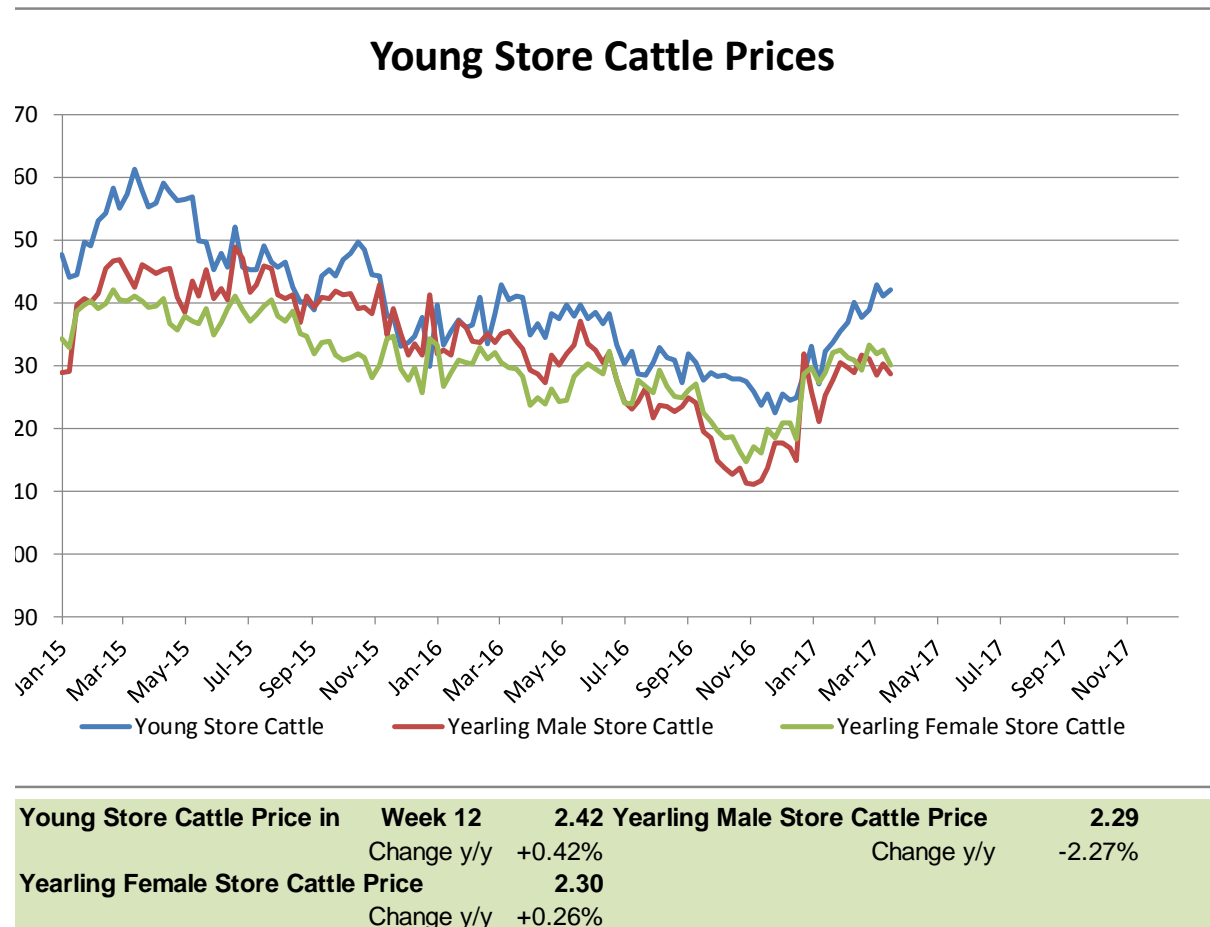


# EU EVOLUTION All CAT GLOBAL VIEW



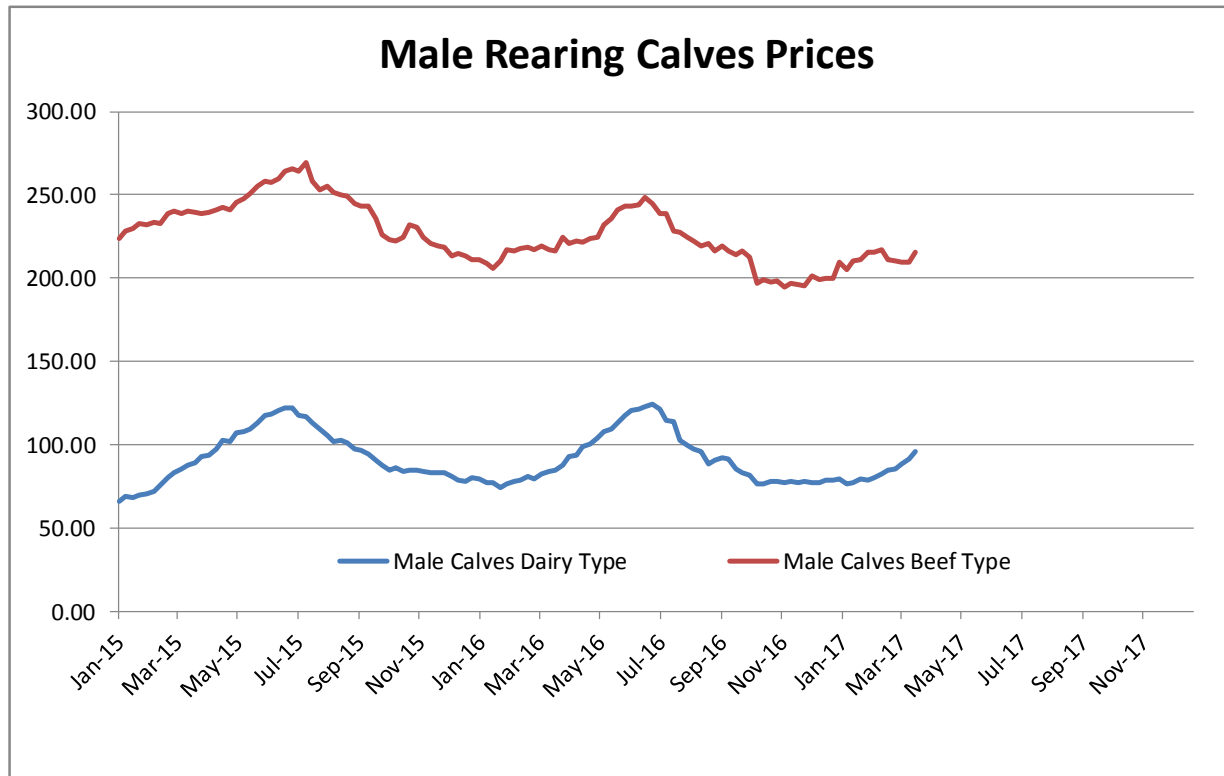
6 April 2017

## Store cattle (€/100 kg live weight)



6 April 2017

### Male calves aged between 8 days and 4 weeks (€/head)



#### Male Rearing Calves Beef type

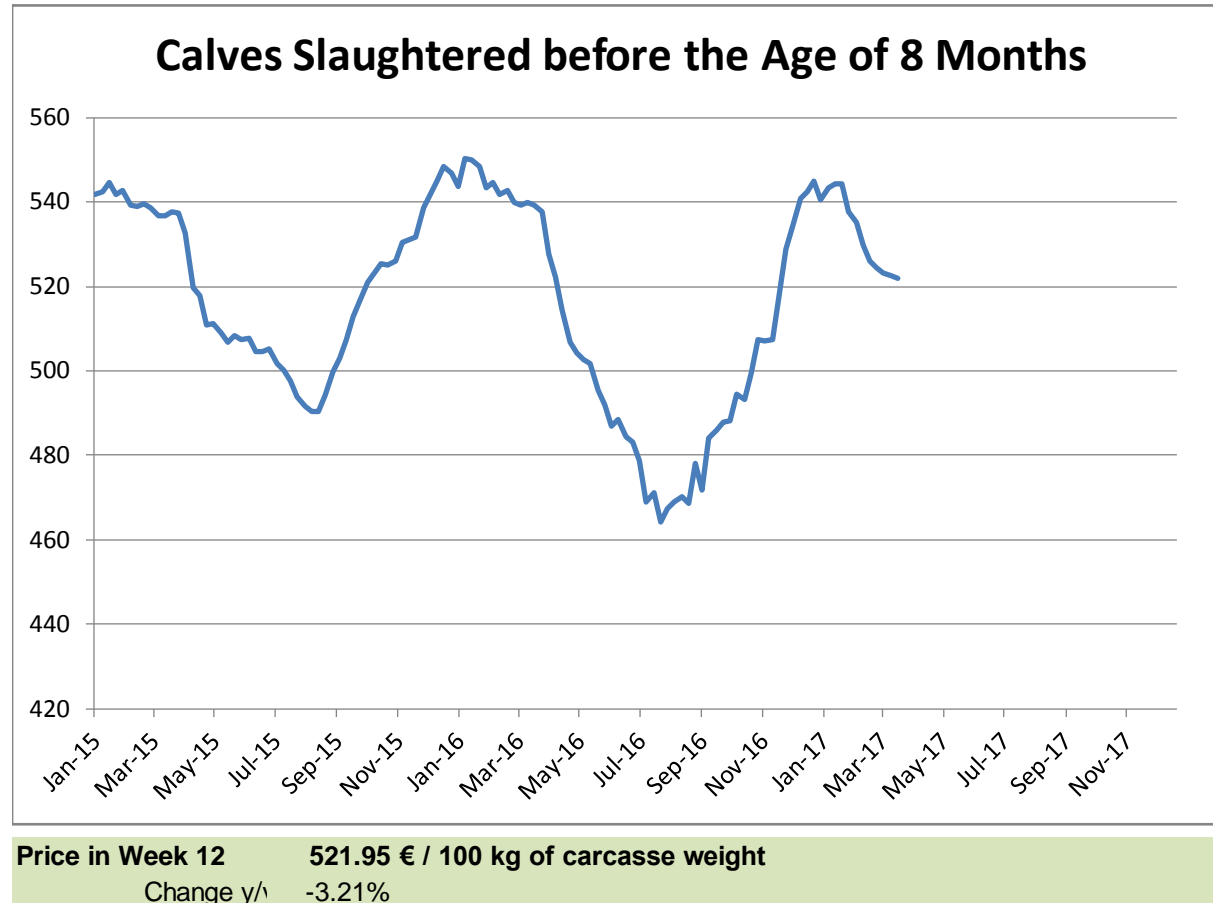
Price in Week 12 **215.73**  
Change y/y -0.20%

#### Male Rearing Calves Dairy type

Price in Week 12 **95.70**  
Change y/y +13.38%

6 April 2017

## Calves slaughtered before the age of less than 8 months (€/100 kg cw)

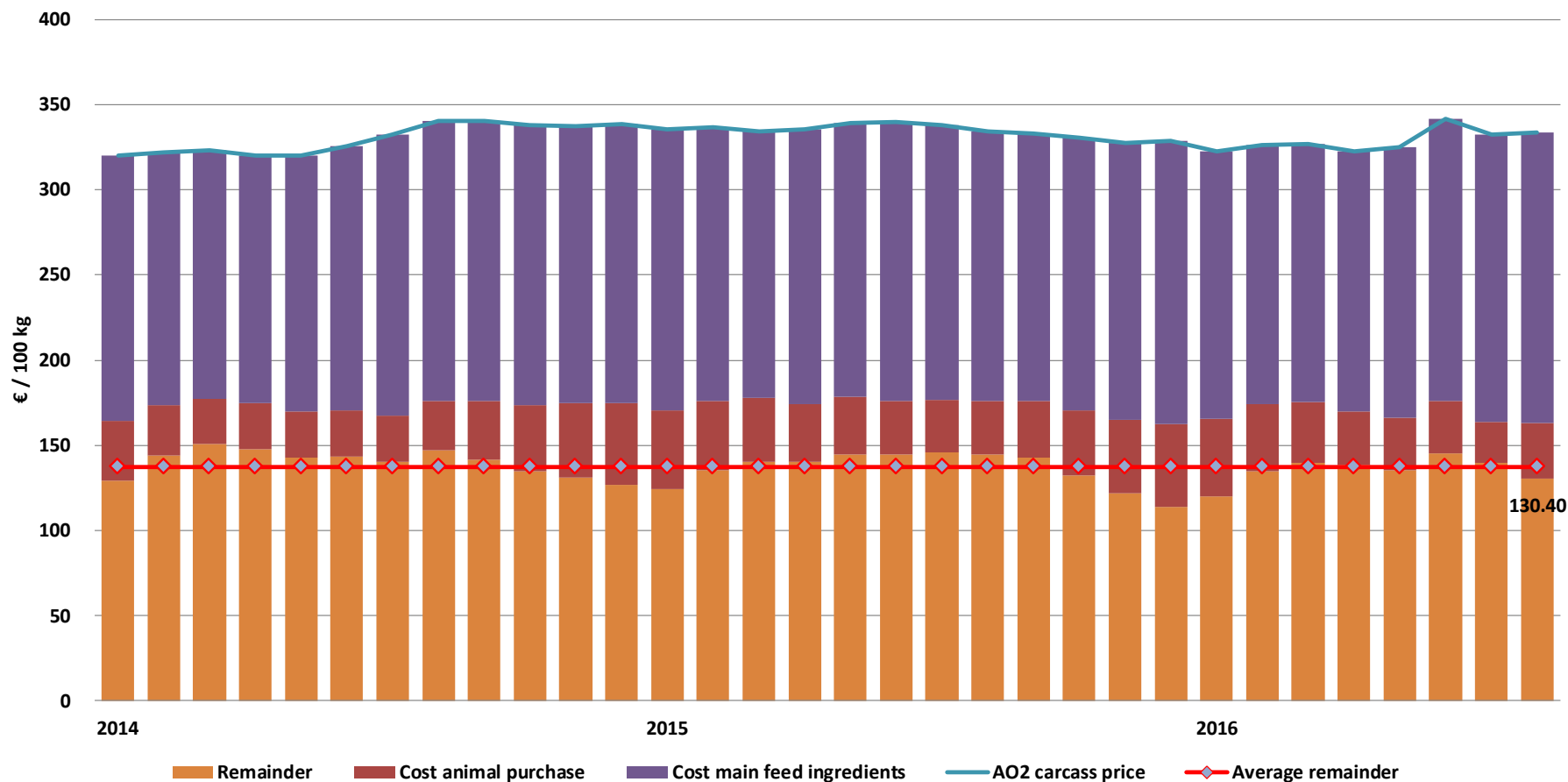


6 April 2017

# REMAINDERS



## Remainder for dairy calves fattening

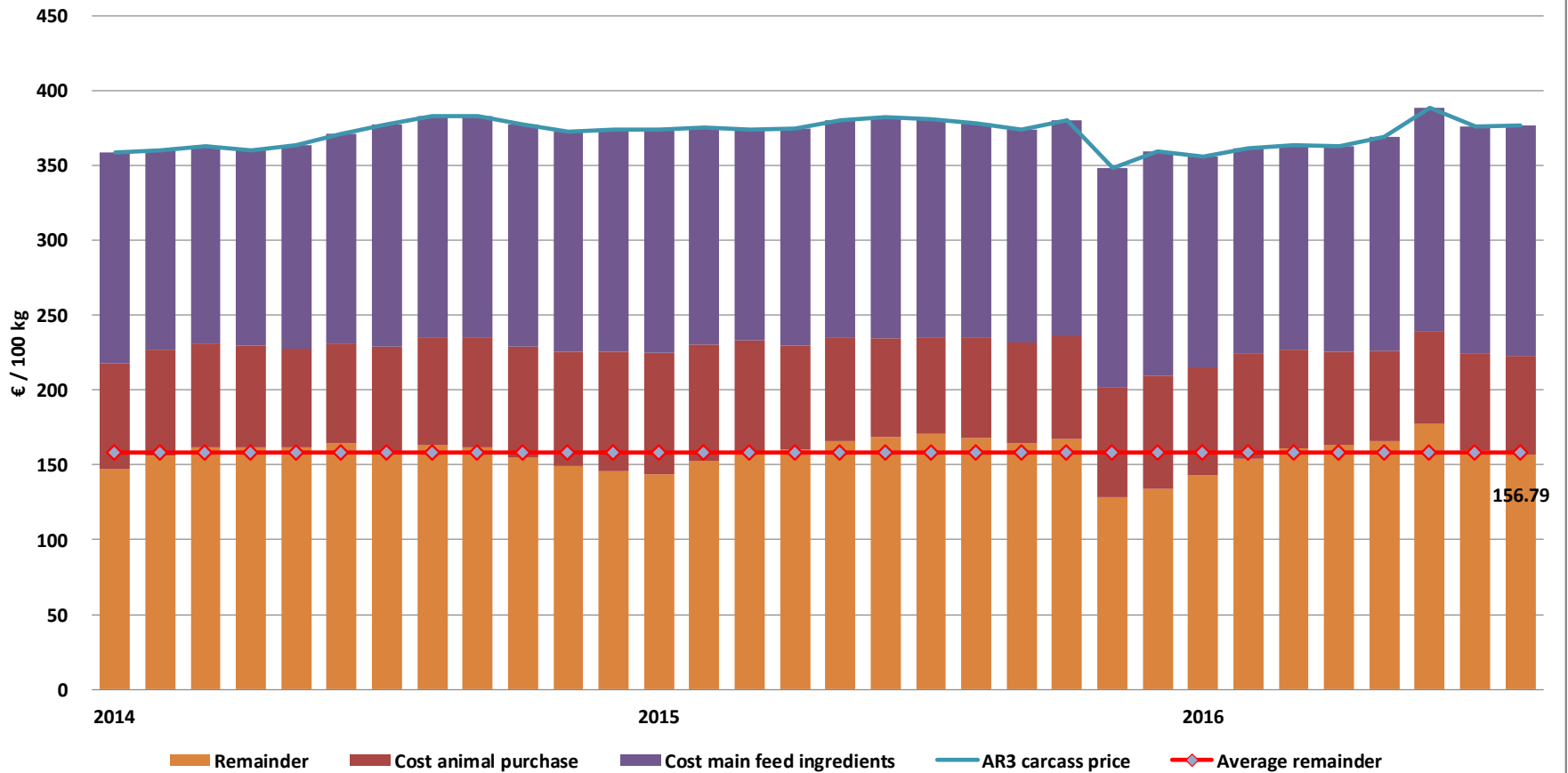


6 April 2017

# REMAINDERS



## Remainder for beef type calves fattening



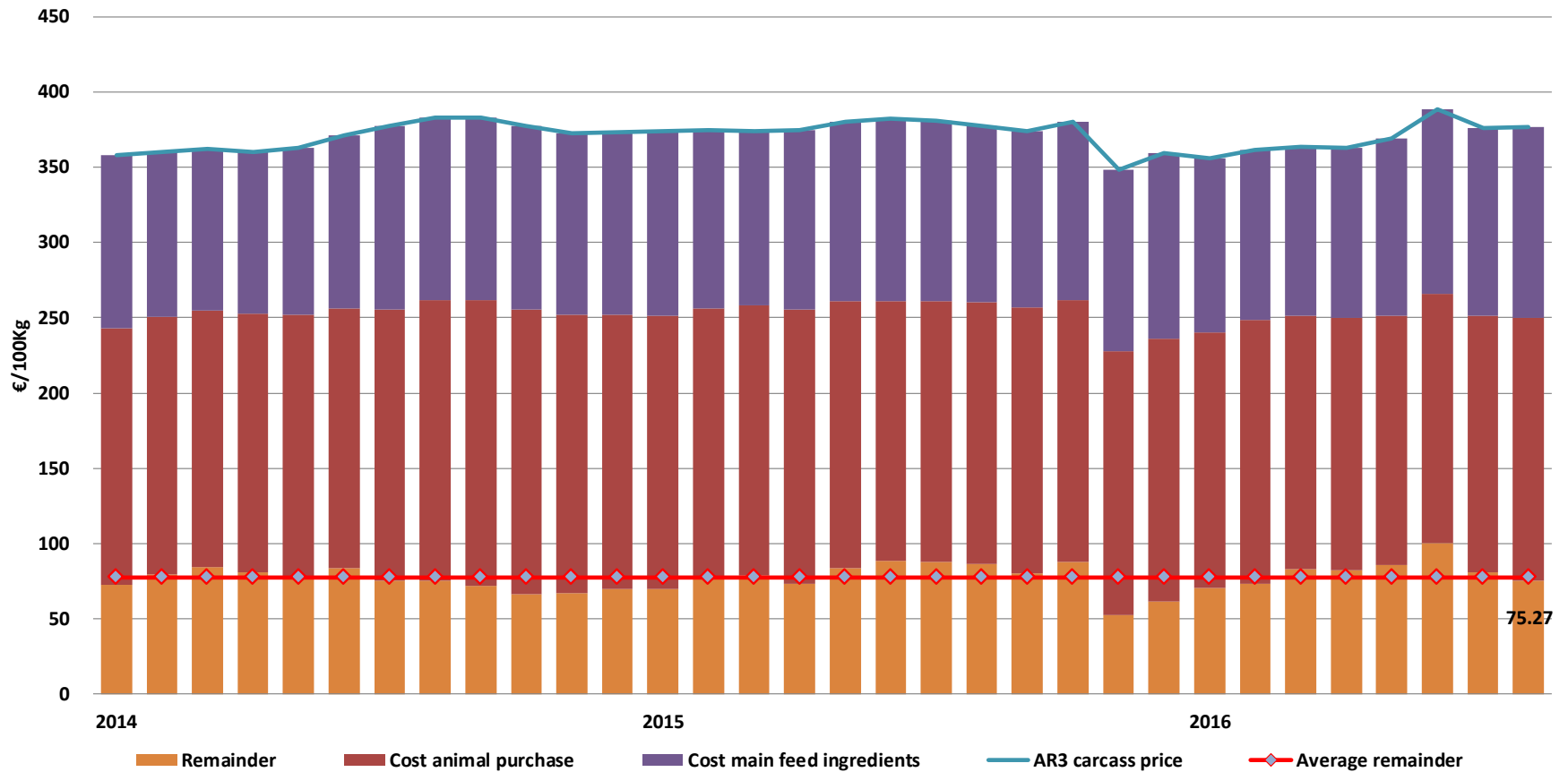
6 April 2017



# REMAINDERS



## Remainder for young store cattle fattening



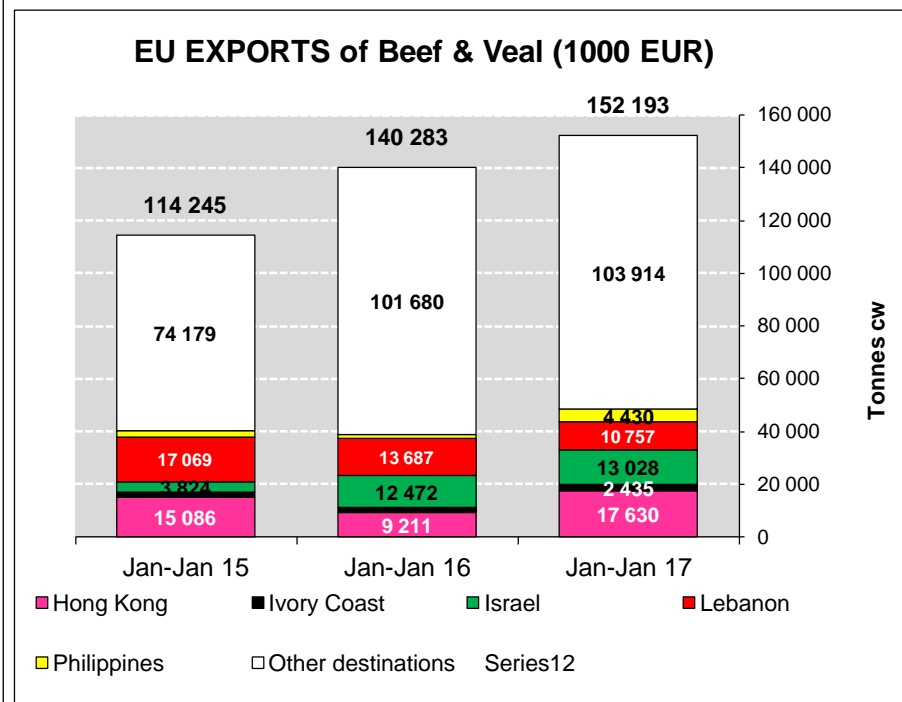
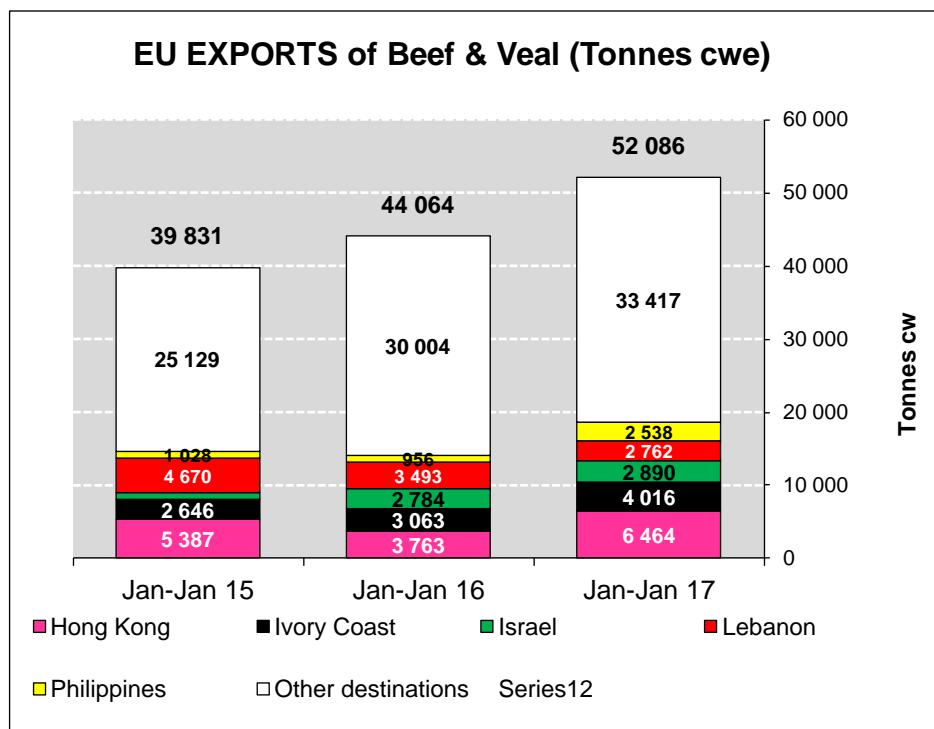
6 April 2017



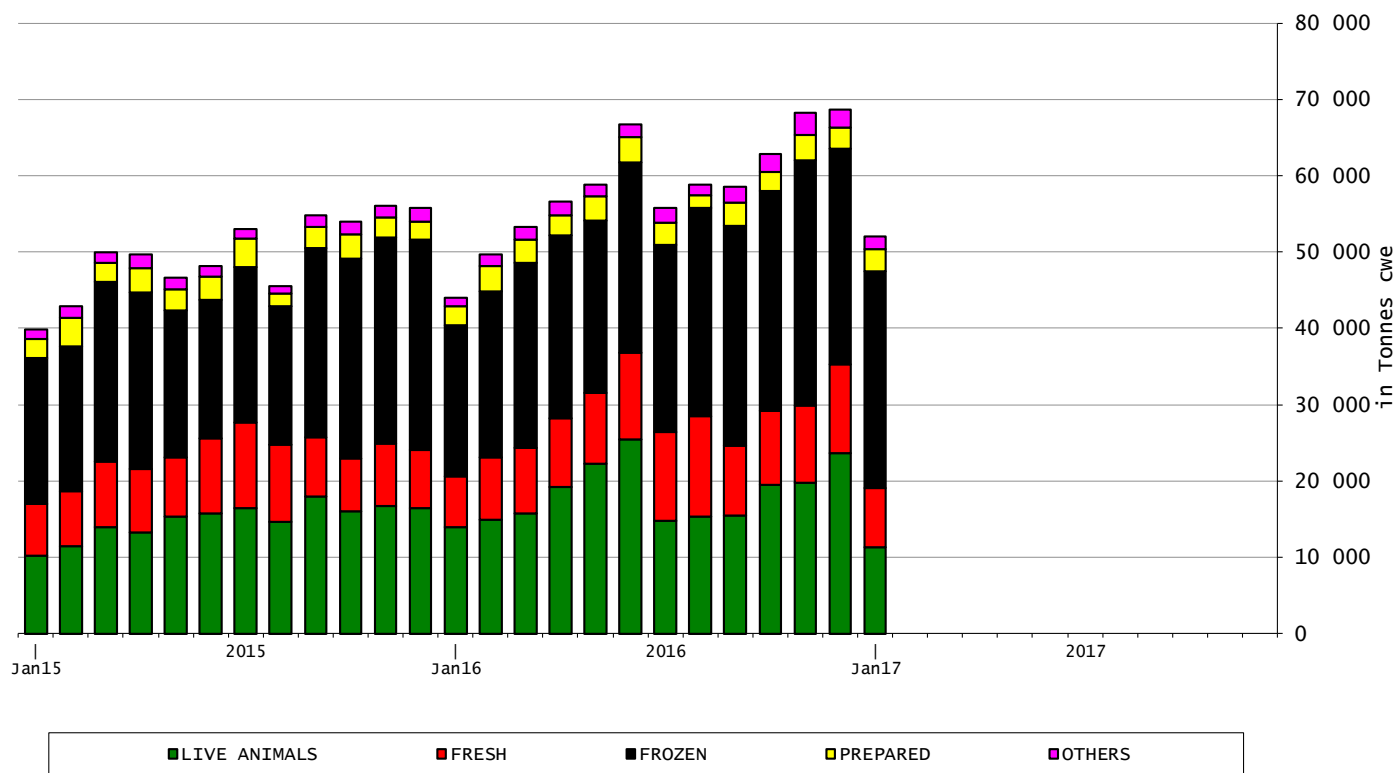
## EU exports of beef and live animals (1): Trade figures (COMEXT – tonnes cwe)

Destinations	2013		2014		2015		2016		Jan-Jan 17		Compared to Jan-Jan 16
	tonnes	%	tonnes	%	tonnes	%	tonnes	%	tonnes	%	
Hong Kong	28 573	6.3%	65 112	11.6%	45 198	7.6%	58 350	8.3%	6 464	12.4%	+ 71.8%
Ivory Coast	21 619	4.8%	28 839	5.2%	35 742	6.0%	36 713	5.2%	4 016	7.7%	+ 31.1%
Israel	9 378	2.1%	8 353	1.5%	18 851	3.2%	41 678	5.9%	2 890	5.5%	+ 3.8%
Lebanon	24 007	5.3%	37 984	6.8%	50 288	8.4%	47 061	6.7%	2 762	5.3%	- 20.9%
Philippines	2 730	0.6%	11 839	2.1%	13 053	2.2%	24 247	3.5%	2 538	4.9%	+ 165.3%
Bosnia-Herz.	24 068	5.3%	34 104	6.1%	39 928	6.7%	38 929	5.5%	2 453	4.7%	+ 19.6%
Vietnam	3 175	0.7%	6 410	1.1%	11 627	1.9%	22 252	3.2%	2 254	4.3%	+ 31.0%
Libya	17 778	3.9%	14 280	2.6%	19 691	3.3%	29 503	4.2%	2 221	4.3%	+ 52.1%
Ghana	40 878	9.0%	33 255	5.9%	37 364	6.3%	35 351	5.0%	2 181	4.2%	- 4.1%
Algeria	25 911	5.7%	18 499	3.3%	16 085	2.7%	25 004	3.6%	2 061	4.0%	+ 44.6%
Switzerland	26 347	5.8%	26 634	4.8%	26 019	4.4%	25 670	3.7%	1 979	3.8%	+ 20.1%
Turkey	5 086	1.1%	8 098	1.4%	57 504	9.6%	71 198	10.1%	1 929	3.7%	- 46.1%
Russia	72 281	16.0%	96 928	17.3%	13 546	2.3%	16 450	2.3%	1 911	3.7%	+ 142.5%
Norway	10 222	2.3%	7 879	1.4%	19 123	3.2%	18 375	2.6%	1 364	2.6%	- 26.1%
Angola	10 589	2.3%	14 587	2.6%	9 643	1.6%	13 549	1.9%	1 121	2.2%	+++
China	7 228	1.6%	8 244	1.5%	6 027	1.0%	11 345	1.6%	945	1.8%	+ 108.6%
For.JRep.Mac	10 577	2.3%	11 370	2.0%	12 561	2.1%	11 781	1.7%	798	1.5%	+ 13.1%
Other Destinations	112 091	24.8%	126 824	22.7%	164 060	27.5%	174 881	24.9%	12 200	23.4%	
Extra-EU	452 537		559 238		596 310		702 337		52 086		
% change			+ 24%		+ 7%		+ 18%		+ 18.2%		

## EU exports of beef and live animals: Trade figures (COMEXT)



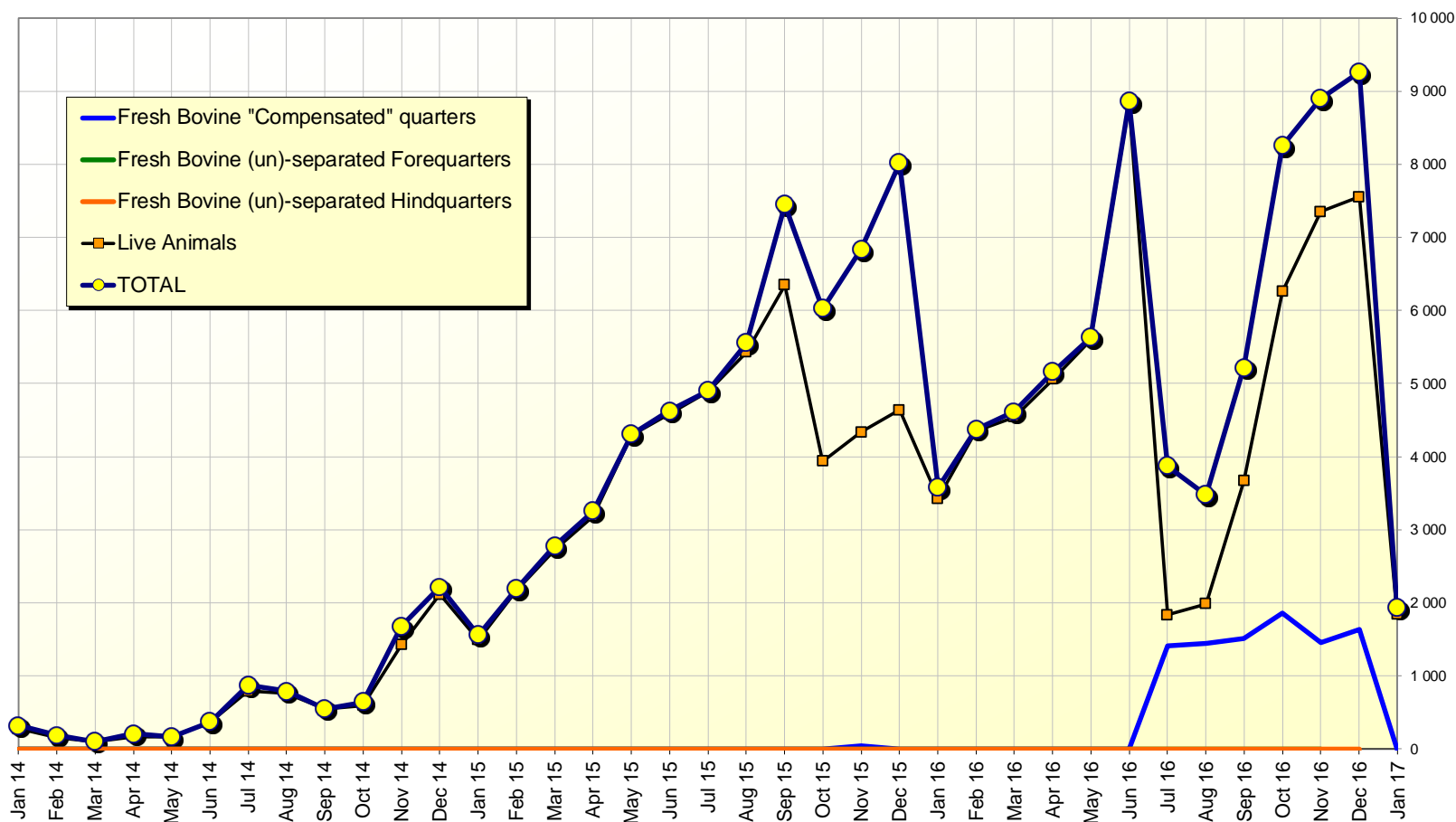
## EU-28 Exports of BEEF products





European  
Commission

## EU beef Exports to TURKEY Trade figures (COMEXT data) *tonnes cwe*

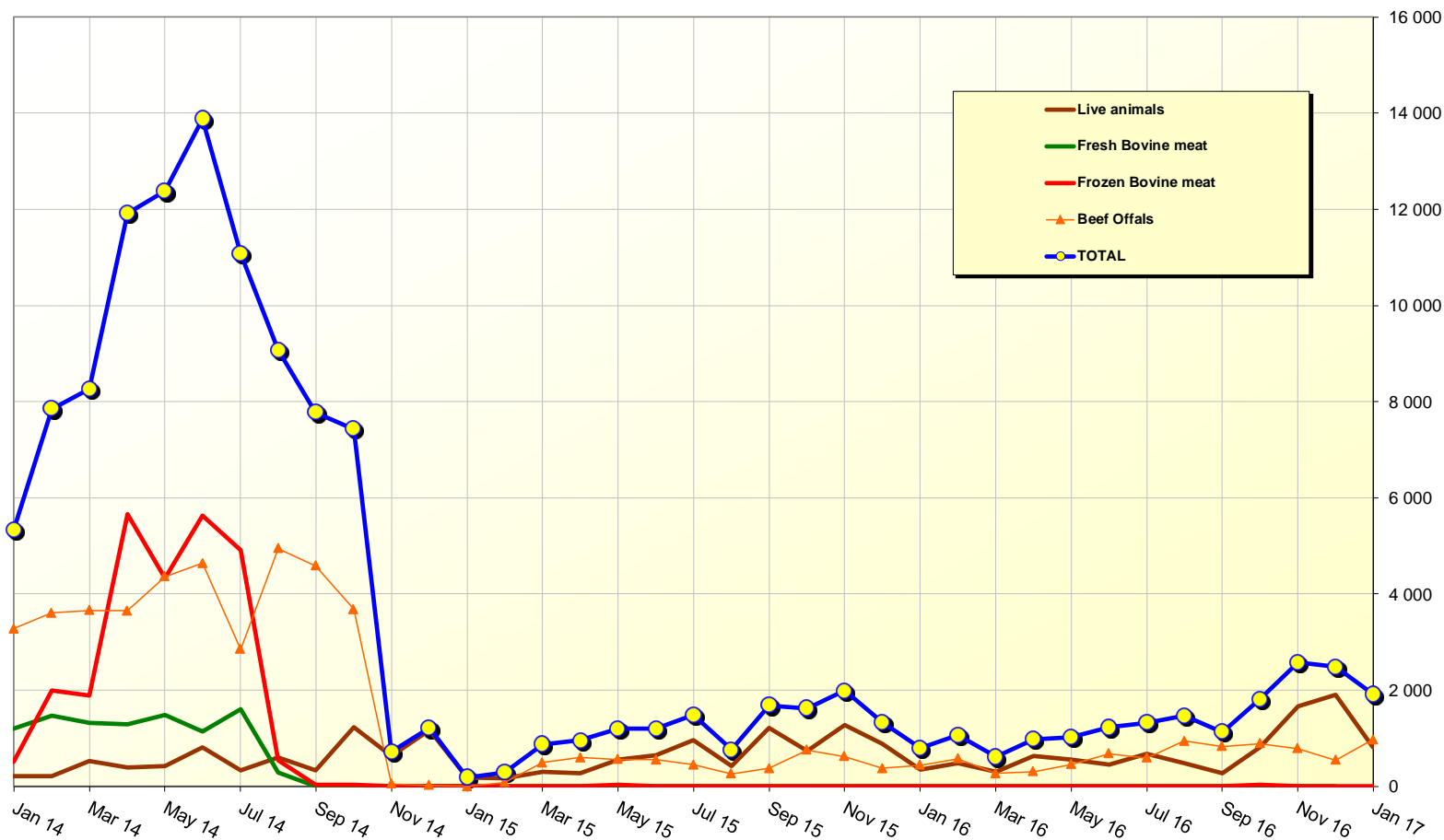


6 April 2017



European  
Commission

## EU beef Exports to RUSSIA Trade figures (COMEXT data) *tonnes cwe*

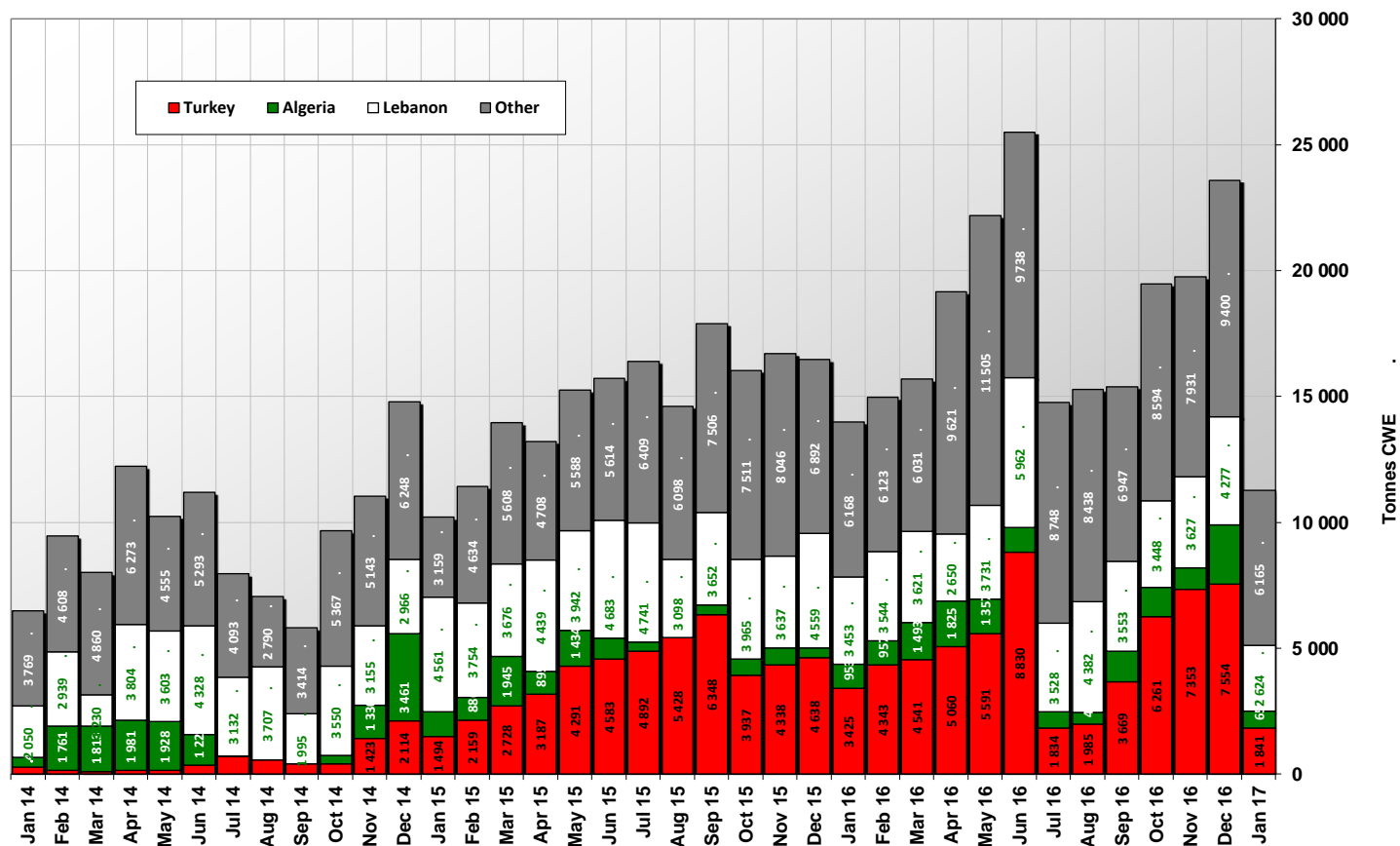


6 April 2017



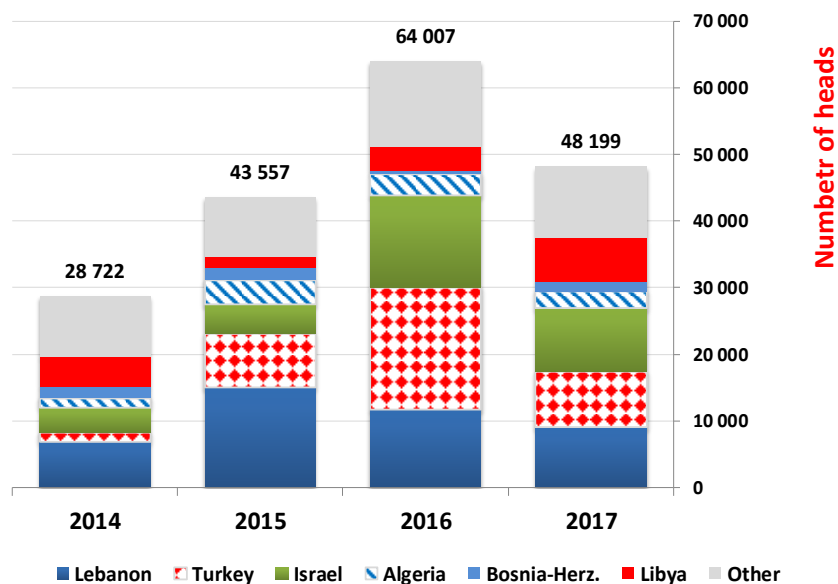
## EU-28 Exports of LIVE Bovine Animals

(Source COMEXT - Tonnes cwe)

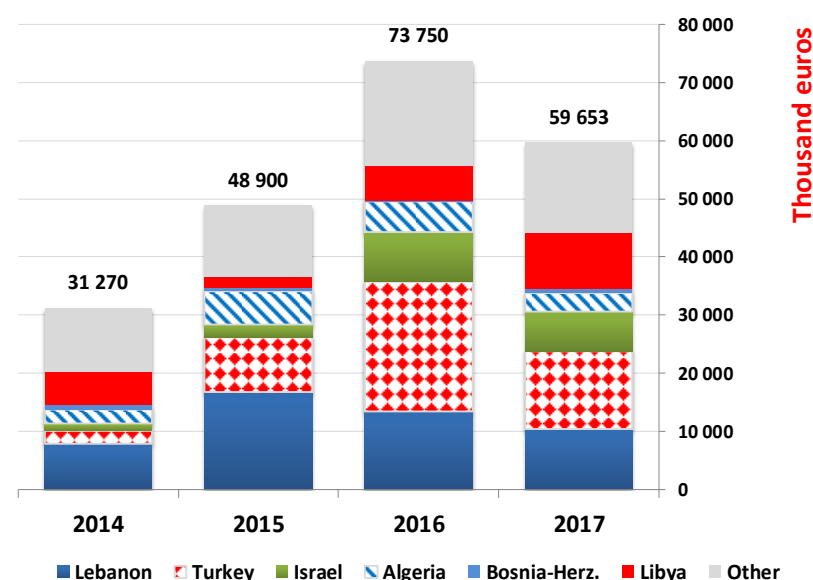


6 April 2017

EU Exports of BEEF live animals by partner for the period Jan-Jan 2017



EU Exports of BEEF live animals by partner for the period Jan-Jan 2017







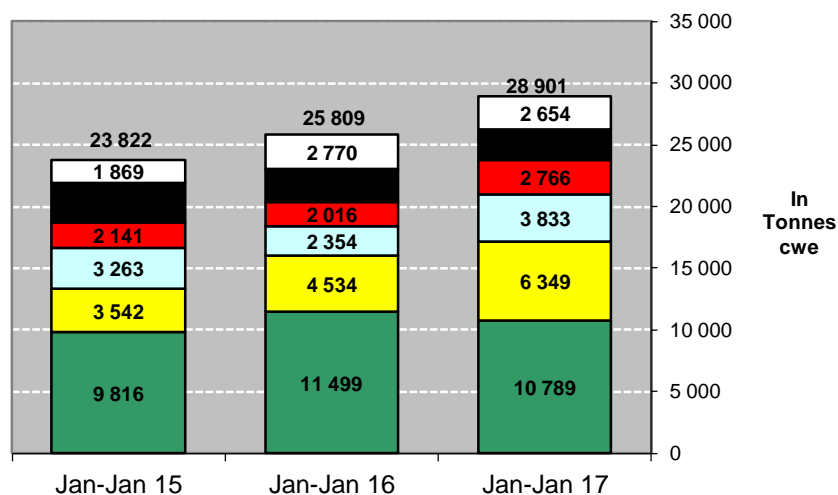
## EU imports of beef and live animals (1): Trade figures (COMEXT – tonnes cwe)

Origins	2013		2014		2015		2016		Jan-Jan 17		Compared to Jan-Jan 16
	tonnes	%	tonnes	%	tonnes	%	tonnes	%	tonnes	%	
Brazil	145 435	43.5%	144 259	43.4%	136 803	42.3%	140 592	42.1%	10 789	37.3%	- 6.2%
Uruguay	51 377	15.4%	49 043	14.8%	46 287	14.3%	56 652	17.0%	6 349	22.0%	+ 40.1%
Argentina	47 976	14.3%	42 074	12.7%	42 149	13.0%	43 521	13.0%	3 833	13.3%	+ 62.9%
USA	22 297	6.7%	23 234	7.0%	24 132	7.5%	20 533	6.1%	2 766	9.6%	+ 37.2%
Australia	28 074	8.4%	32 653	9.8%	30 884	9.6%	27 749	8.3%	2 510	8.7%	- 4.8%
New Zealand	13 827	4.1%	14 432	4.3%	11 380	3.5%	9 902	3.0%	706	2.4%	- 7.5%
Botswana	6 280	1.9%	6 424	1.9%	9 258	2.9%	9 382	2.8%	458	1.6%	- 7.4%
Switzerland	4 284	1.3%	5 456	1.6%	5 090	1.6%	5 498	1.6%	452	1.6%	- 2.6%
Namibia	11 113	3.3%	9 994	3.0%	12 112	3.7%	10 685	3.2%	449	1.6%	+ 20.4%
Paraguay	0	0.0%	0	0.0%	1 915	0.6%	5 947	1.8%	317	1.1%	- 34.5%
Ukraine	0	0.0%	570	0.2%	20	0.0%	317	0.1%	69	0.2%	+++
Turkey	0	0.0%	0	0.0%	40	0.0%	62	0.0%	38	0.1%	+++
Serbia	619	0.2%	425	0.1%	439	0.1%	557	0.2%	37	0.1%	+ 18.7%
Algeria	0	0.0%	0	0.0%	21	0.0%	0	0.0%	33	0.1%	+++
Chile	537	0.2%	875	0.3%	713	0.2%	602	0.2%	30	0.1%	- 41.5%
Egypt									28	0.1%	+++
Canada	965	0.3%	780	0.2%	428	0.1%	425	0.1%	21	0.1%	- 55.2%
Other Origins	1 845	0.6%	2 143	0.6%	1 375	0.4%	1 559	0.5%	16	0.1%	
Extra-EU	334 630		332 362		323 043		333 981		28 901		
% change			- 1%		- 3%		+ 3%		+ 12.0%		

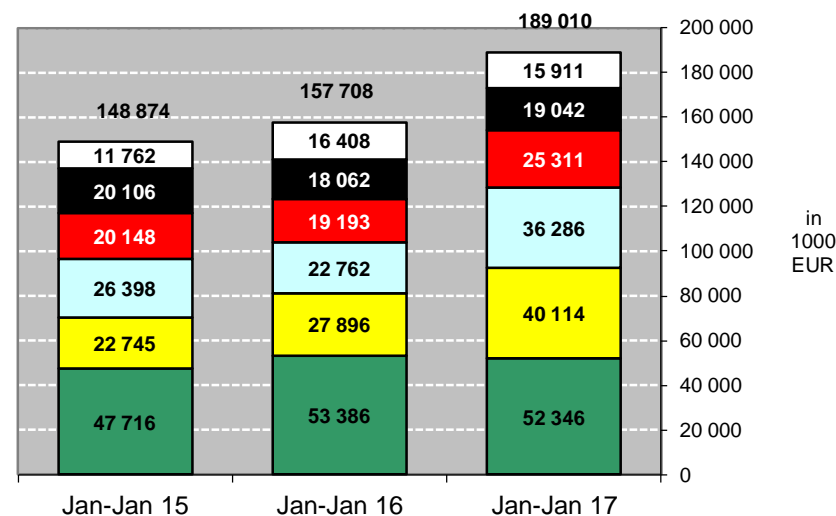
6 April 2017

## EU imports of beef and live animals (2): Trade figures (COMEXT)

**IMPORTS of Beef & Veal into EU (Tonnes cwe)**

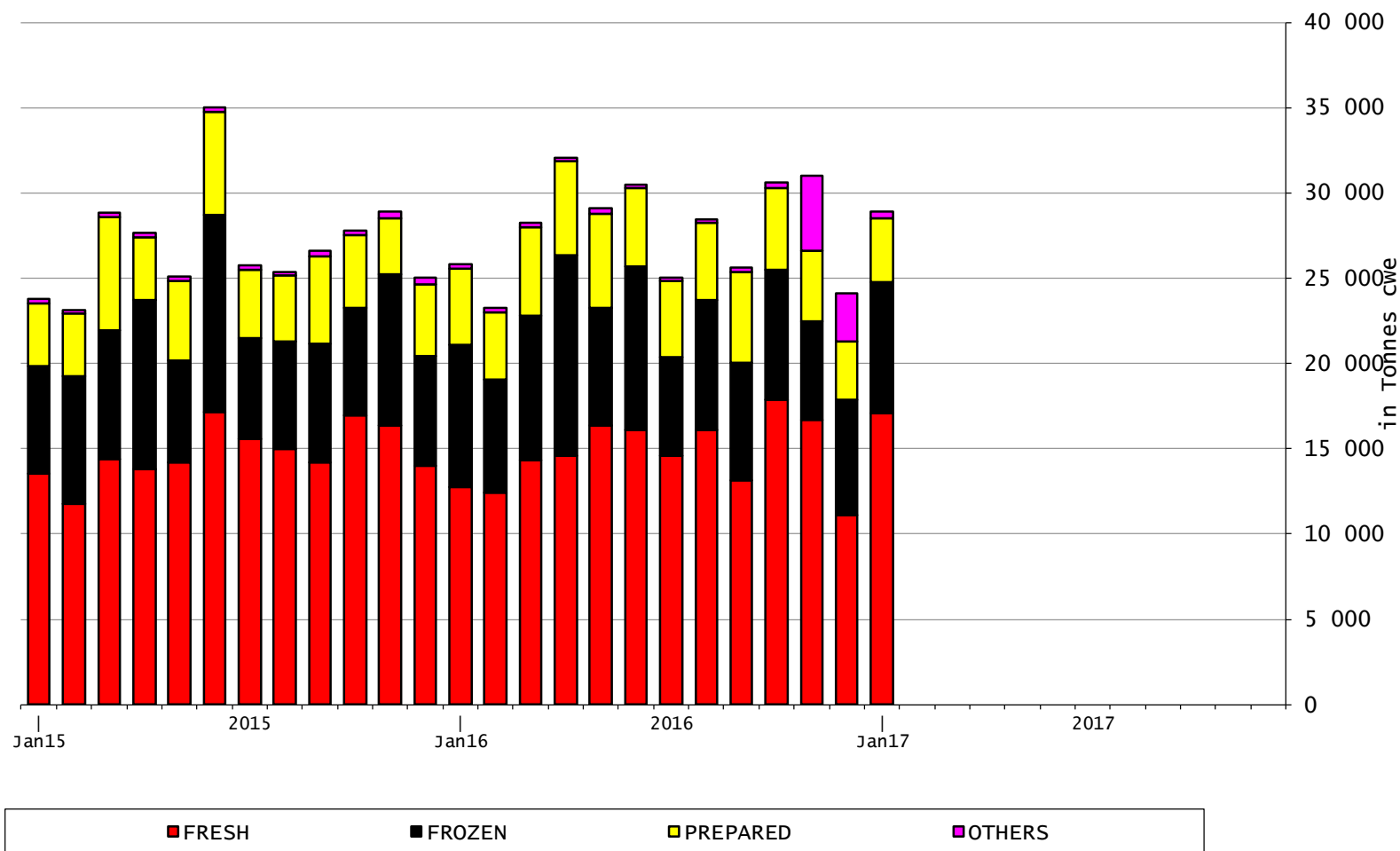


**IMPORTS of Beef & Veal into EU (1000 EUR)**





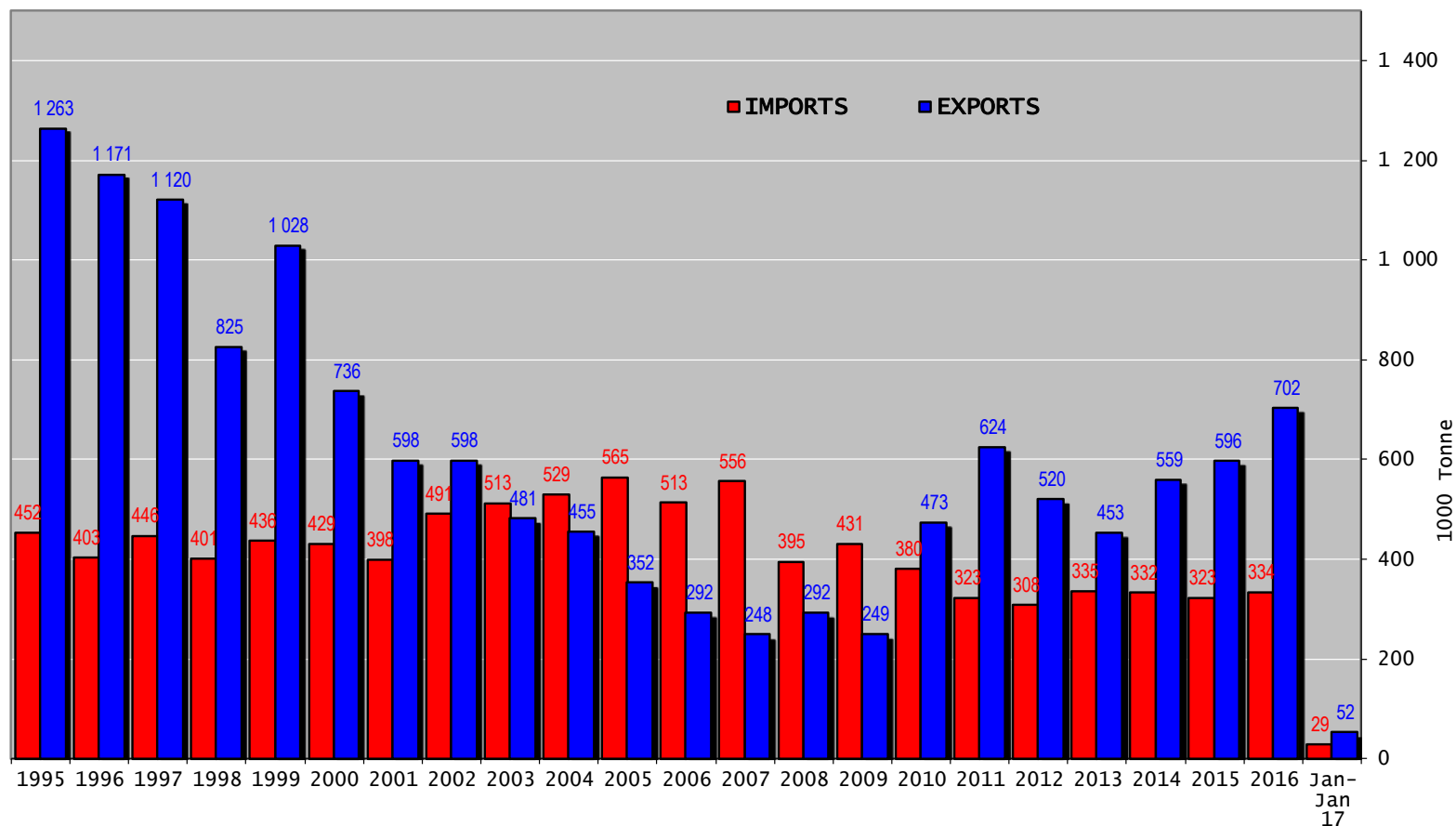
## EU-28 Imports of BEEF products



6 April 2017



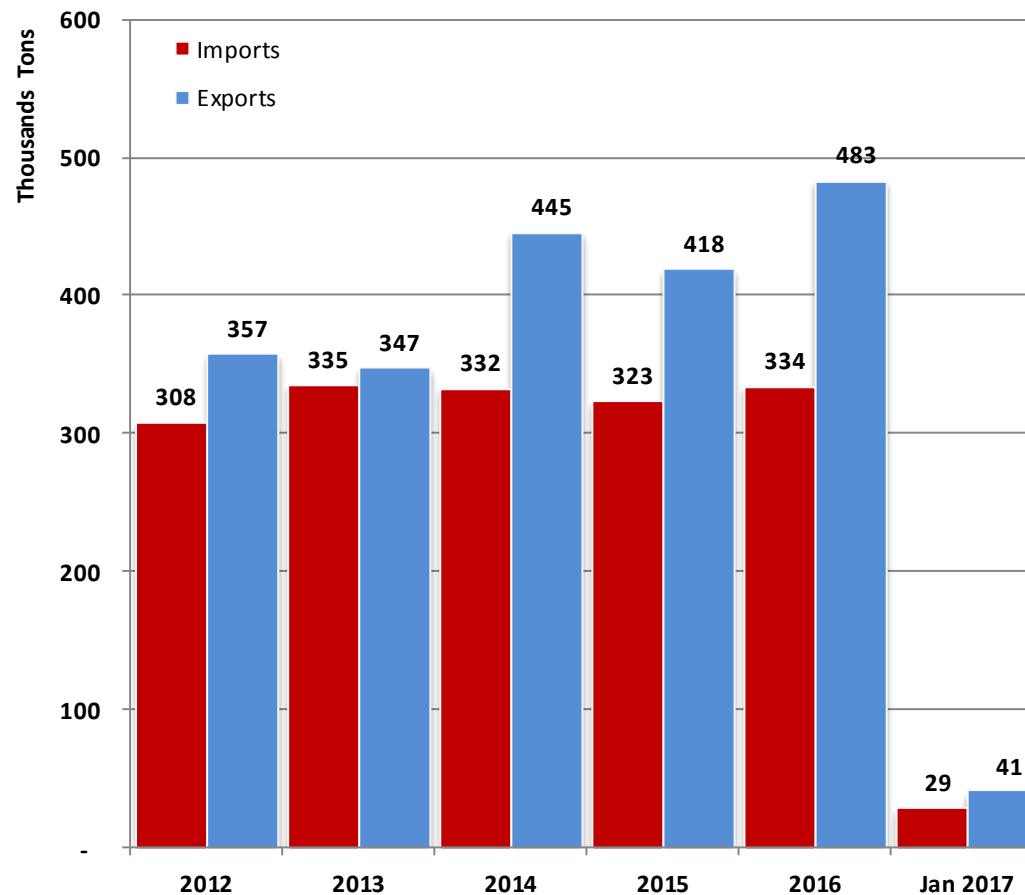
### Trade balance of beef and live animals



6 April 2017



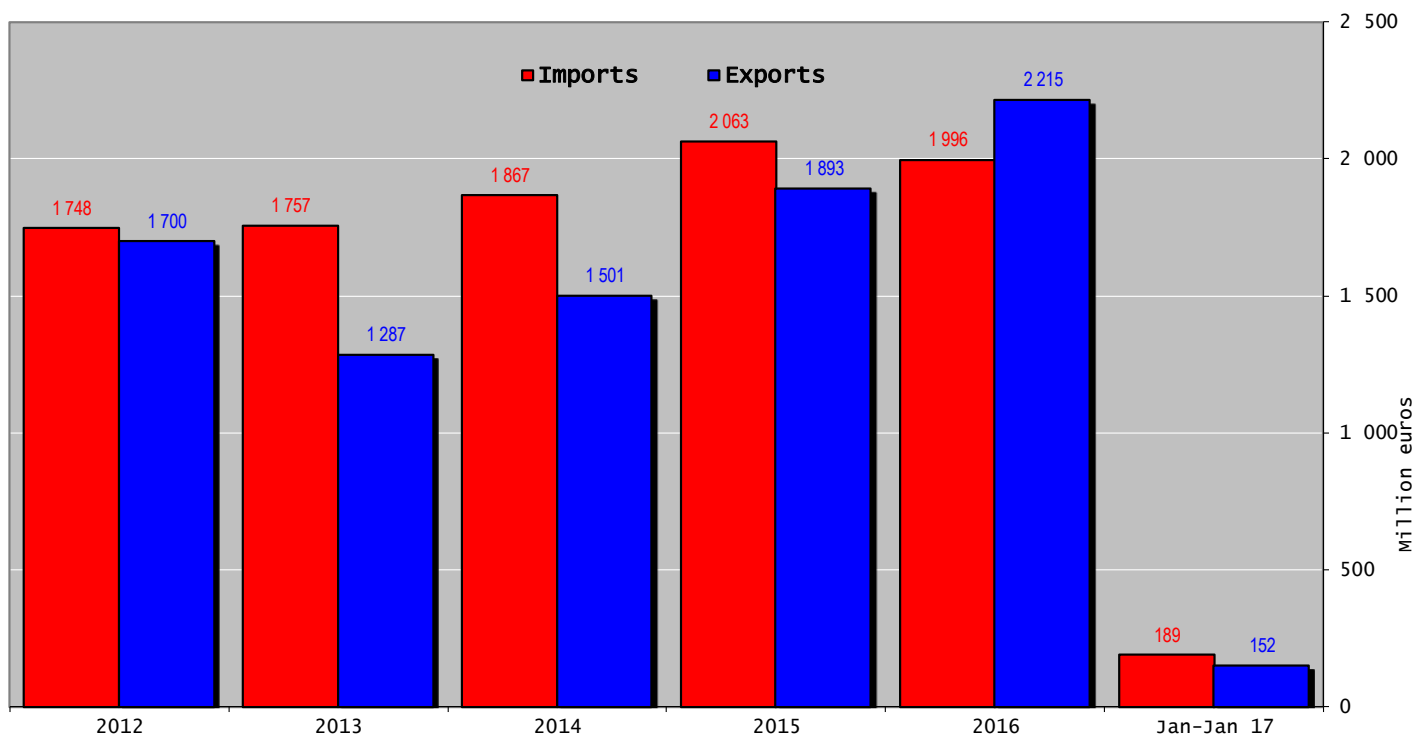
### EU Trade of Beef Products (except Live Animals)



6 April 2017



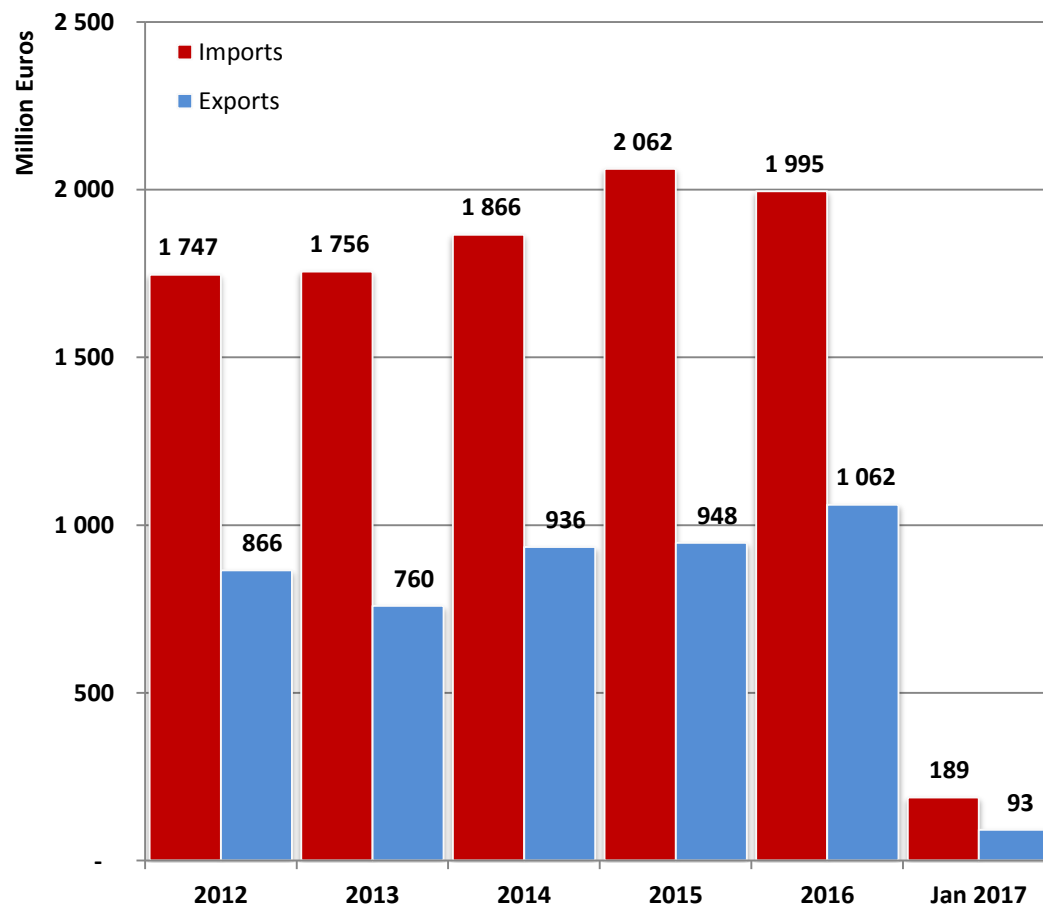
## Trade balance of beef and live animals



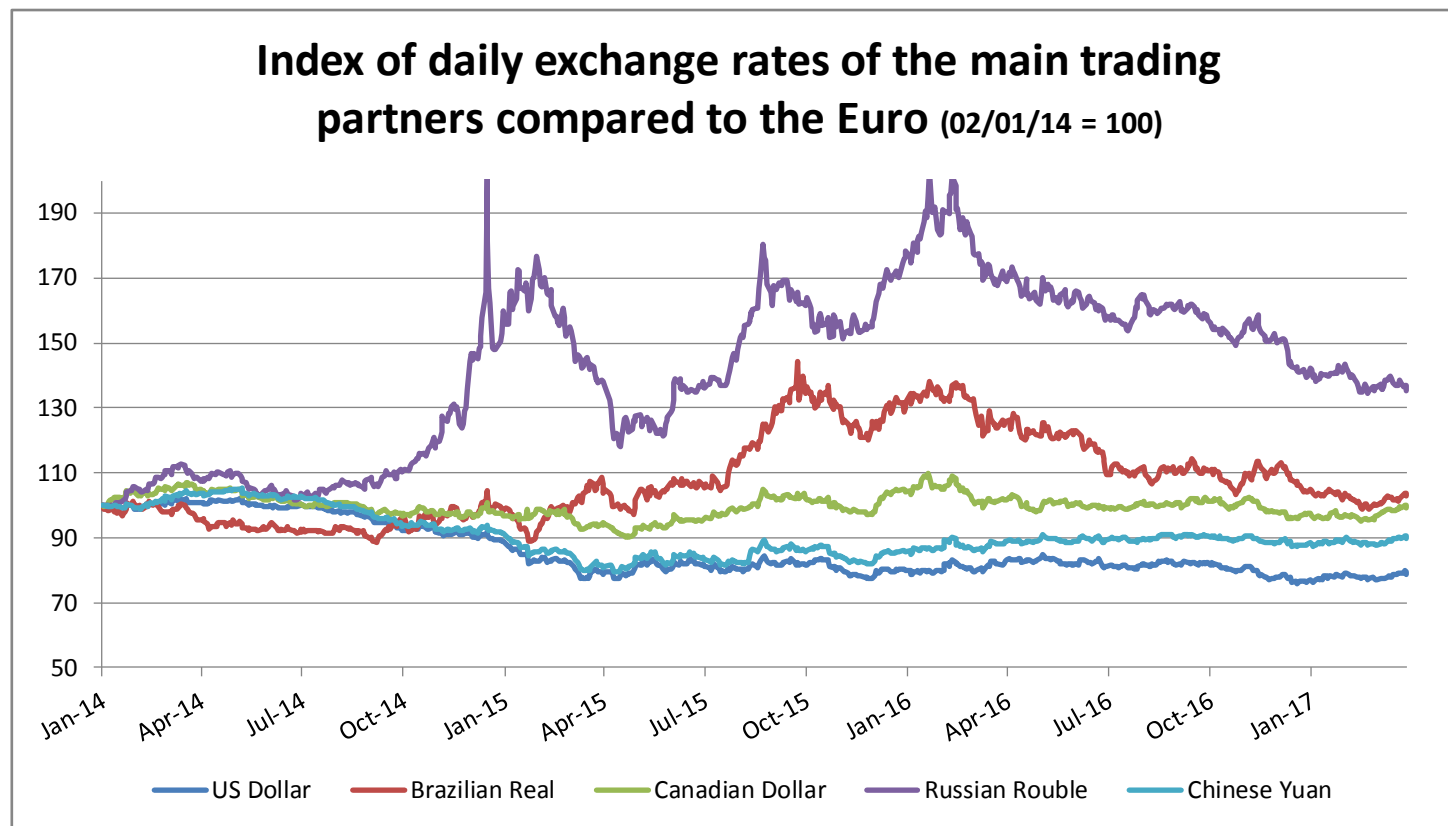
6 April 2017



### EU Trade of Beef Products (except Live Animals)



6 April 2017



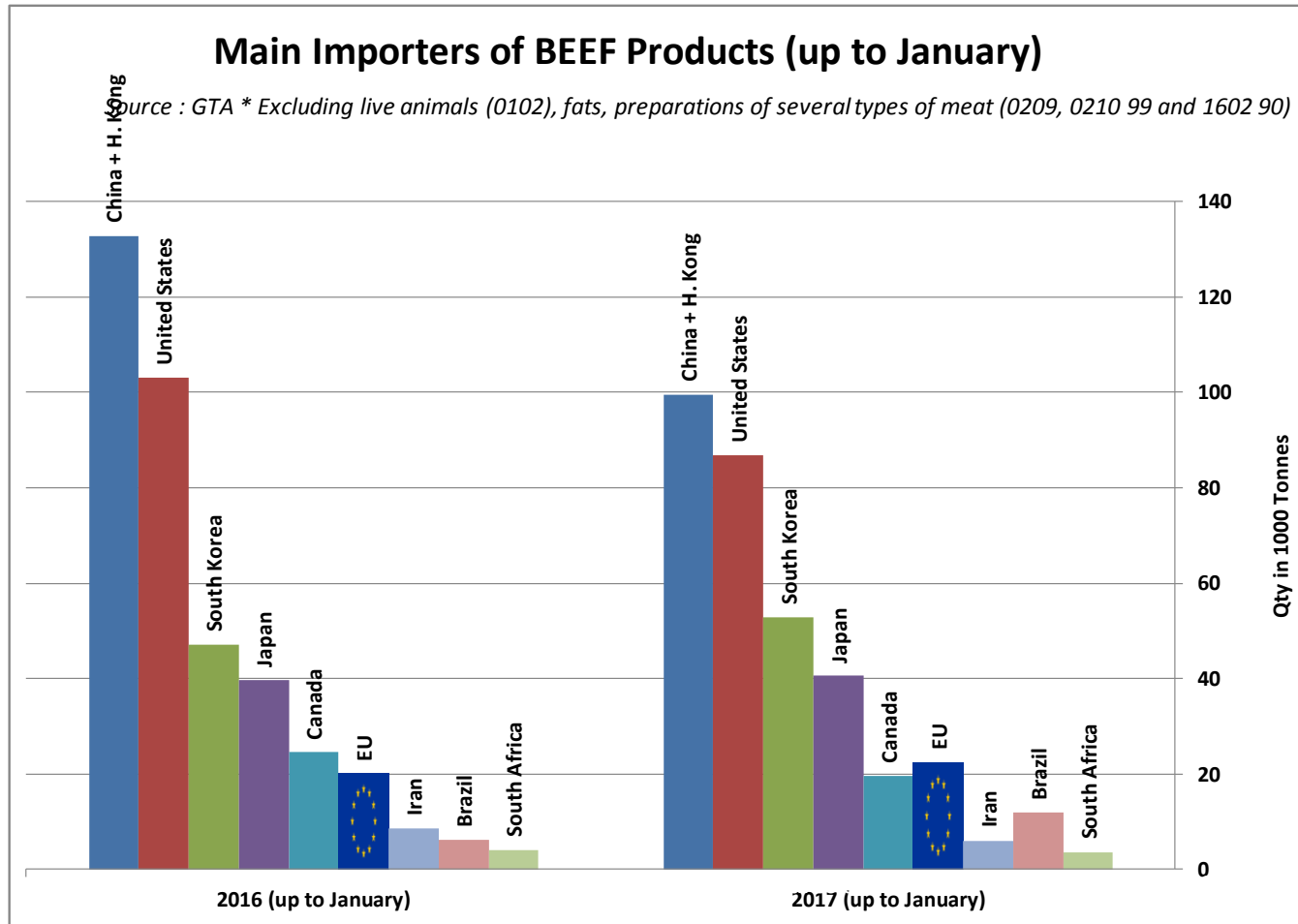
Source : ECB

6 April 2017



Source : GTA

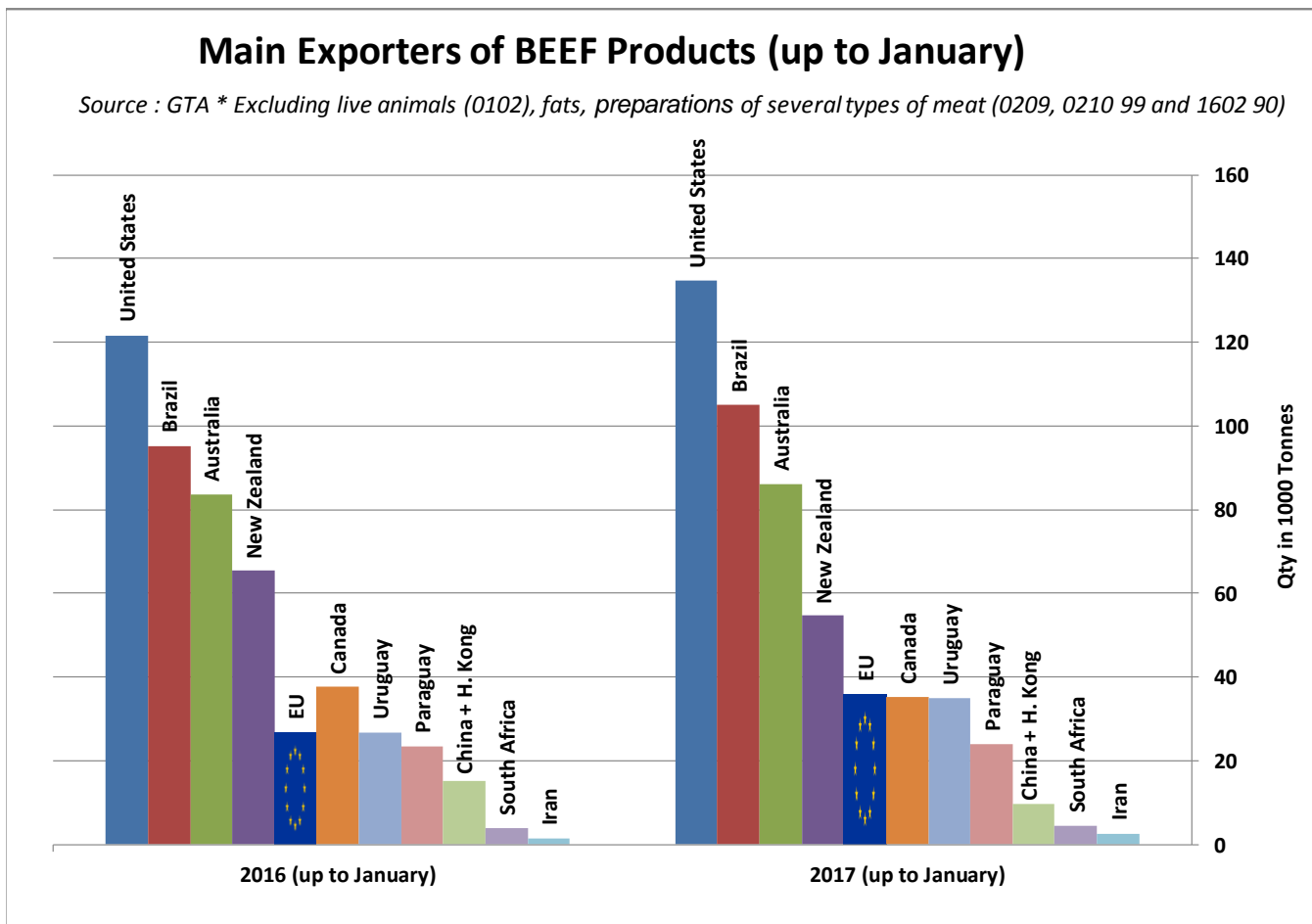
\* Excluding live animals (0102), fats, preparations of several types of meat (0209, 0210 99 and 1602 90)



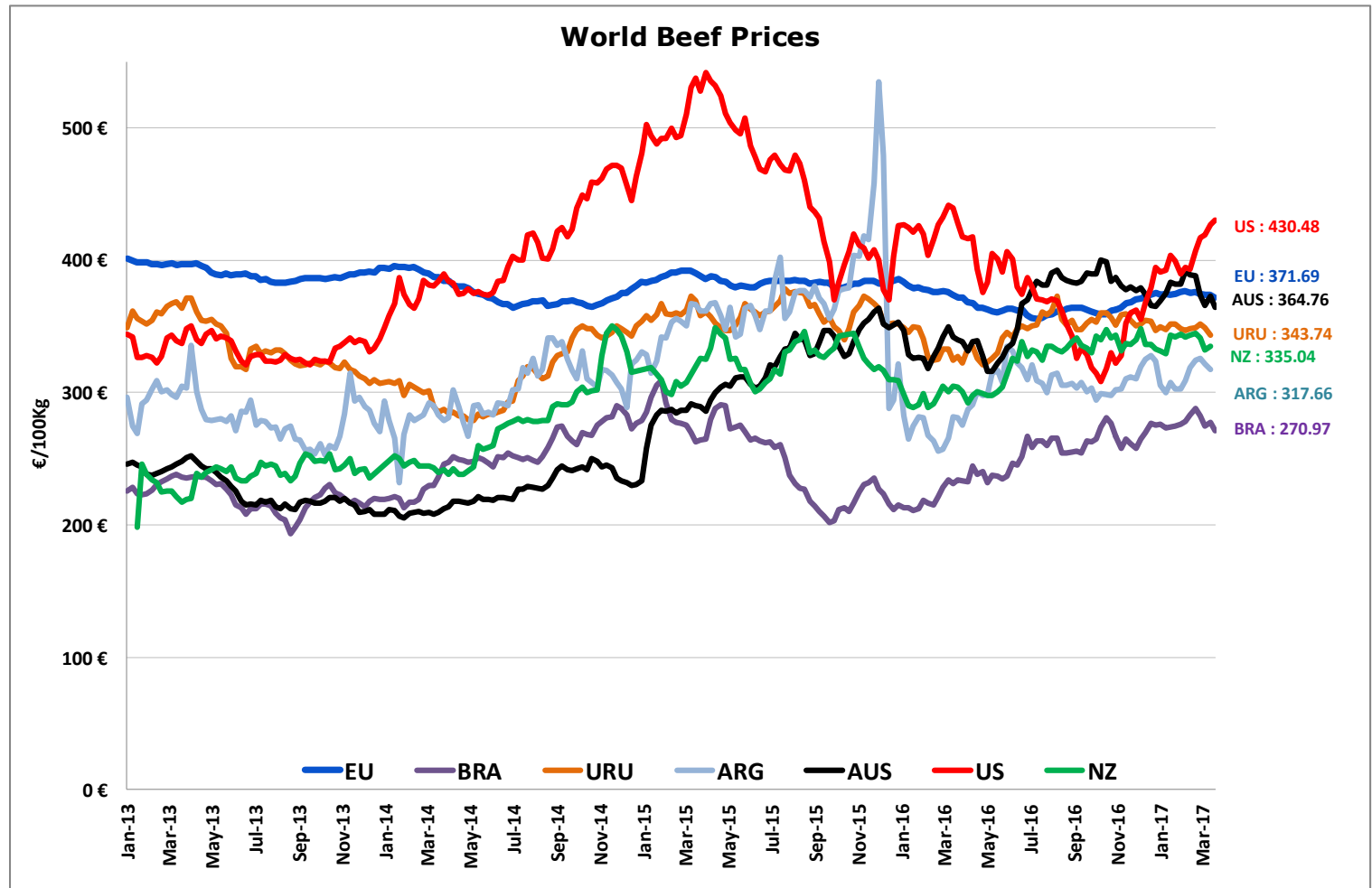
6 April 2017

Source : GTA

\* Excluding live animals (0102), fats, preparations of several types of meat (0209, 0210 99 and 1602 90)



6 April 2017



BR  
NZ

<http://www.pecuaria.com.br/cotacoes.php>

[http://www.abc-consorcio.com.ar/Estadisticas/detalle/117/precios\\_comparativos\\_del\\_novillo.html](http://www.abc-consorcio.com.ar/Estadisticas/detalle/117/precios_comparativos_del_novillo.html)

6 April 2017

# High Quality Beef Import Quotas



Hilton Quota		Regulation (EU) N° 593/2013								
		Quantity allocated (Tons)	2013/2014		2014/2015		2015/2016		2016/2017*	
			Use		Use		Use		Use	
09.4001	Australia	2 250								
09.4004	Argentina	200	15.71	7.86%	9.46	4.73%	12.21	6.11%	6.71	3.36%
09.4450	Argentina	29 500	23 663.86	80.22%	22 867.03	77.52%	22 350.61	75.76%	15 614.07	52.93%
09.4451	Australia	7 150	7 138.89	99.84%	6 815.93	95.33%	6 749.85	94.40%	3 205.03	44.83%
09.4452	Uruguay	6 300	6 278.75	99.66%	6 280.98	99.70%	6 249.09	99.19%	4 988.62	79.18%
09.4453	Brazil	10 000	4 078.92	40.79%	7 989.89	79.90%	9 289.17	92.89%	7 117.65	71.18%
09.4454	New Zealand	1 300	1 299.61	99.97%	1 299.45	99.96%	1 299.95	100.00%	808.16	62.17%
09.4002	Canada/US	11 500	431.80	3.75%	353.46	3.07%	292.16	2.54%	377.90	3.29%
09.4455	Paraguay	1 000		0.00%	12.13	1.21%	915.63	91.56%	633.08	63.31%
Total Beef		66 750	42 891.83	64.26%	45 618.87	68.34%	47 146.46	70.63%	32 744.51	49.06%
Total Buffalo		2 450	15.71	0.64%	9.46	0.39%	12.21	0.50%	6.71	0.27%
Total		69 200	42 907.54	62.01%	45 628.33	65.94%	47 158.67	68.15%	32 751.22	47.33%

\* up to 28/02/2017

6 April 2017

# High Quality Beef Import Quotas



European  
Commission  
Regulation (EU) No 481/2012

## Quota erga omnes

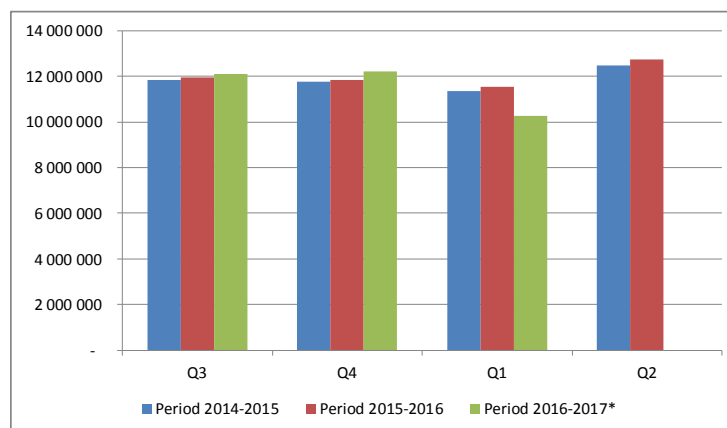
	2013-Q3	2013-Q4	2014-Q1	2014-Q2	TOTAL
Period 2013-2014	10 198 942	10 493 437	10 191 527	10 282 860	41 166 765
Available	12 050 000	12 050 000	12 050 000	12 050 000	48 200 000
Use	84.64%	87.08%	84.58%	85.33%	85.41%

	2014-Q3	2014-Q4	2015-Q1	2015-Q2	TOTAL
Period 2014-2015	11 842 700	11 745 231	11 353 830	12 457 389	47 399 150
Available	12 050 000	12 050 000	12 050 000	12 050 000	48 200 000
Use	98.28%	97.47%	94.22%	103.38%	98.34%
Available after transfer	12 050 000	12 257 300	12 562 069	13 258 240	
	98.28%	95.82%	90.38%	93.96%	

	2015-Q3	2015-Q4	2016-Q1	2016-Q2	TOTAL
Period 2015-2016	11 965 843	11 851 187	11 528 823	12 736 406	48 082 260
Available	12 050 000	12 050 000	12 050 000	12 050 000	48 200 000
Use	99.30%	98.35%	95.67%	105.70%	99.76%
Available after transfer	12 050 000	12 134 157	12 332 969	12 854 146	
	99.30%	97.67%	93.48%	99.08%	

	2016-Q3	2016-Q4	2017-Q1	2017-Q2	TOTAL
Period 2016-2017*	12 092 468	12 197 542	10 262 763	-	34 552 774
Available	12 050 000	12 050 000	12 050 000	12 050 000	48 200 000
Use	100.35%	101.22%	85.17%	0.00%	71.69%
Available after transfer	12 050 000	12 007 532	11 859 989	13 647 226	
	100.35%	101.58%	86.53%	0.00%	

\* Until 31.03.2017



6 April 2017

# Forecast Summary



	2015	2016	2017	2018
<b>EU.15 PRODUCTION</b> ( 1000T )	+ 2.57% 6 806	+ 2.17% 6 953	- 0.35% 6 929	+ 0.00% 6 940
<b>EU.15 CONSUMPTION</b> ( 1000T )	+ 1.85% 6 747	+ 0.65% 6 791	- 0.38% 6 765	- 0.52% 6 730
<b>BALANCE</b>	59	163	164	210
<b>EU.13 PRODUCTION</b> ( 1000T )	+ 12.43% 777	+ 7.17% 833	+ 0.63% 838	+ 1.92% 854
<b>EU.13 CONSUMPTION</b> ( 1000T )	- 3.26% 417	+ 17.98% 492	- 3.24% 476	- 1.96% 466
<b>BALANCE</b>	360	341	362	388
<b>EU.28 PRODUCTION</b> ( 1000T )	+ 3.50% 7 583	+ 2.68% 7 786	- 0.25% 7 766	+ 0.36% 7 794
<b>EU.28 CONSUMPTION</b> ( 1000T )	+ 1.54% 7 163	+ 1.66% 7 282	- 0.58% 7 240	- 0.61% 7 196
<b>BALANCE</b>	420	504	526	598
<b>EU - CARCASS PRICES</b>	2015	2016	2017	2018
<b>ADULT MALE BOVINES</b> ( €/100 kg )	+ 3.5% 386.5	- 3.98% 371.1	+ 1.25% 375.8	+ 0.75% 378.6
<b>COWS</b> ( €/100 kg )	- 1.1% 283.6	- 5.50% 268.0	+ 1.73% 272.6	+ 0.51% 274.0

Sources : EStat New Cronos, Member States

Agriculture  
and Rural  
Development

6 April 2017