



# Fit for 55

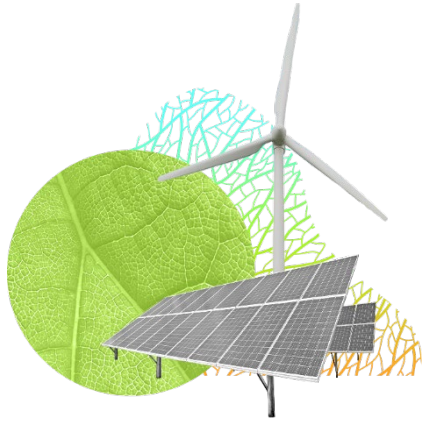
Revision of the Land Use, Land Use Change and Forestry  
(LULUCF) Regulation, and carbon removals post-2030

## Summary of the new agreement

*DG CLIMA C3 team, 17 Mar 2023*

*esp. Valeria Forlin, Rene Colditz, Florian Claeys, Ivana Novotna, Johan Nielsen, **Simon** Kay, Christian Holzleitner*

# A green transition: Protecting nature and increasing Europe's natural carbon sink

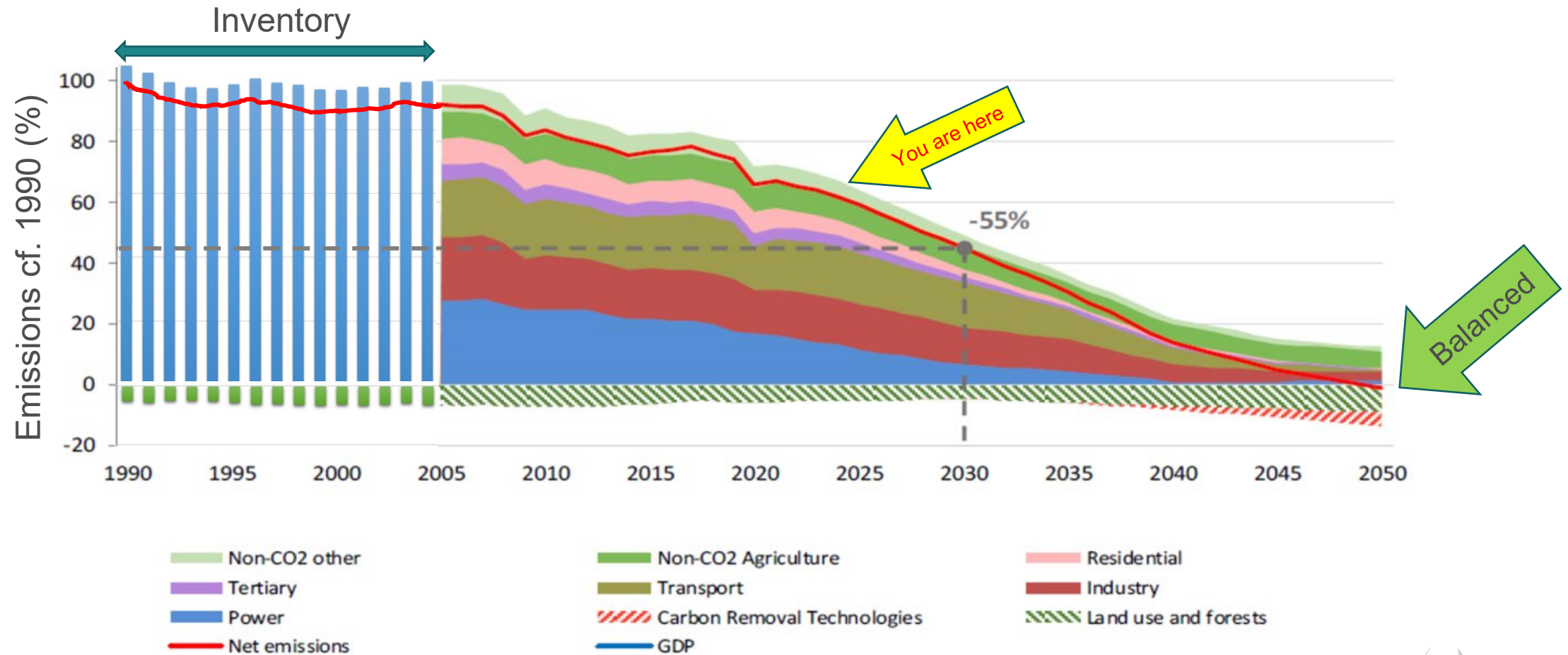


- **Land use, Forestry and Agriculture**
- Set higher ambitions for the enhancing Europe's natural carbon removals
- Strengthen sustainability criteria for bioenergy
- Incentivise good practices in biomass

Proposals adopted through the ordinary legislative procedure, see:

[https://www.europarl.europa.eu/infographic/legislative-procedure/index\\_en.html](https://www.europarl.europa.eu/infographic/legislative-procedure/index_en.html)

# Pathway to climate neutrality: Climate Law



# How many carbon removals?

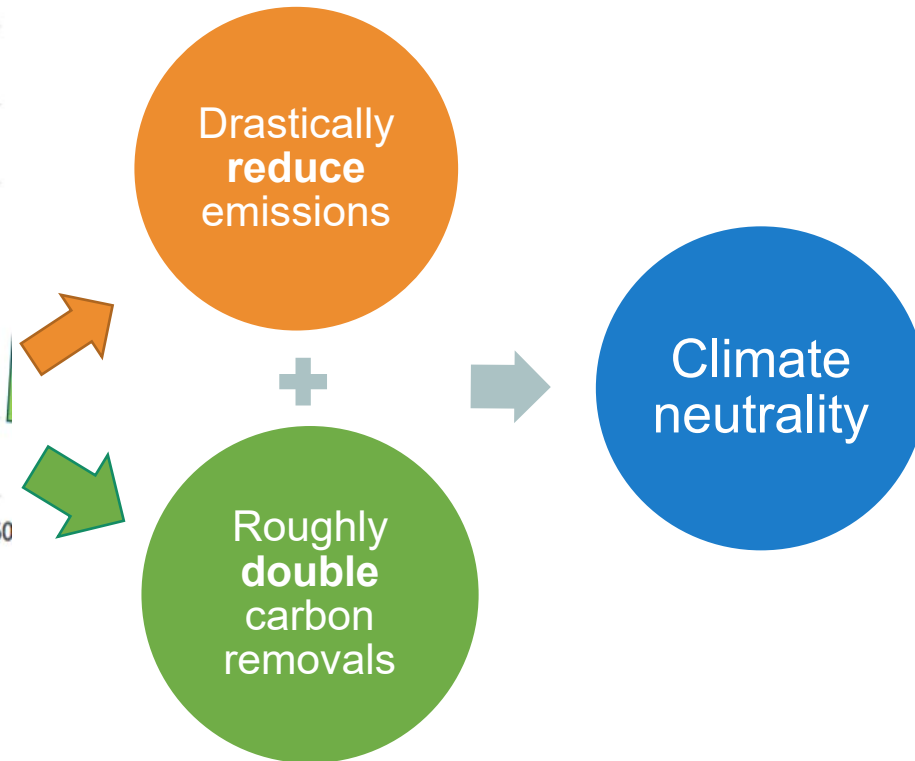
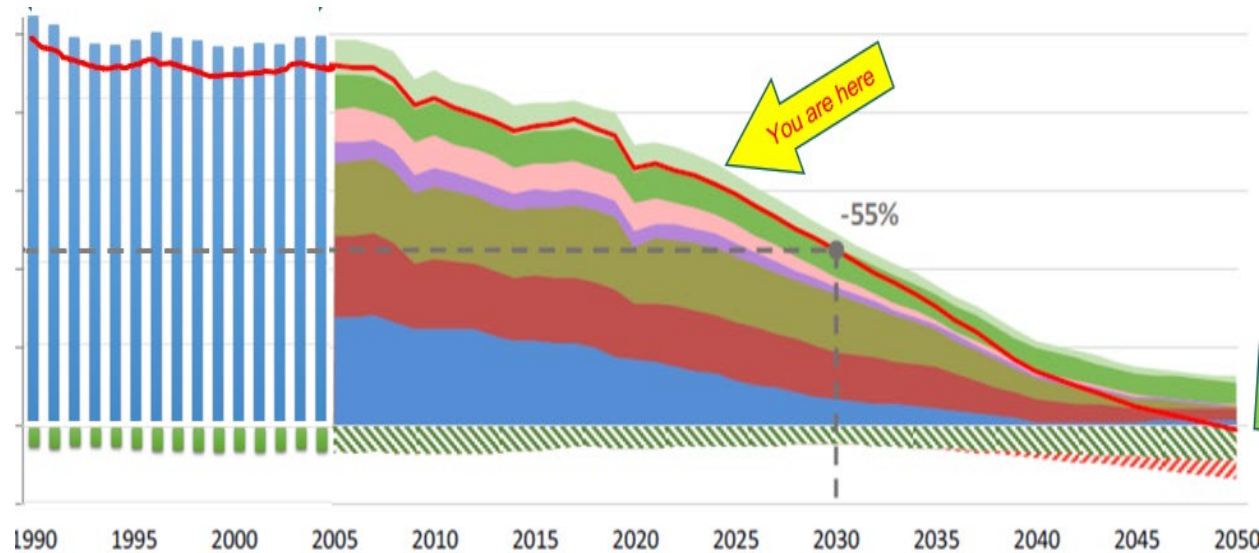
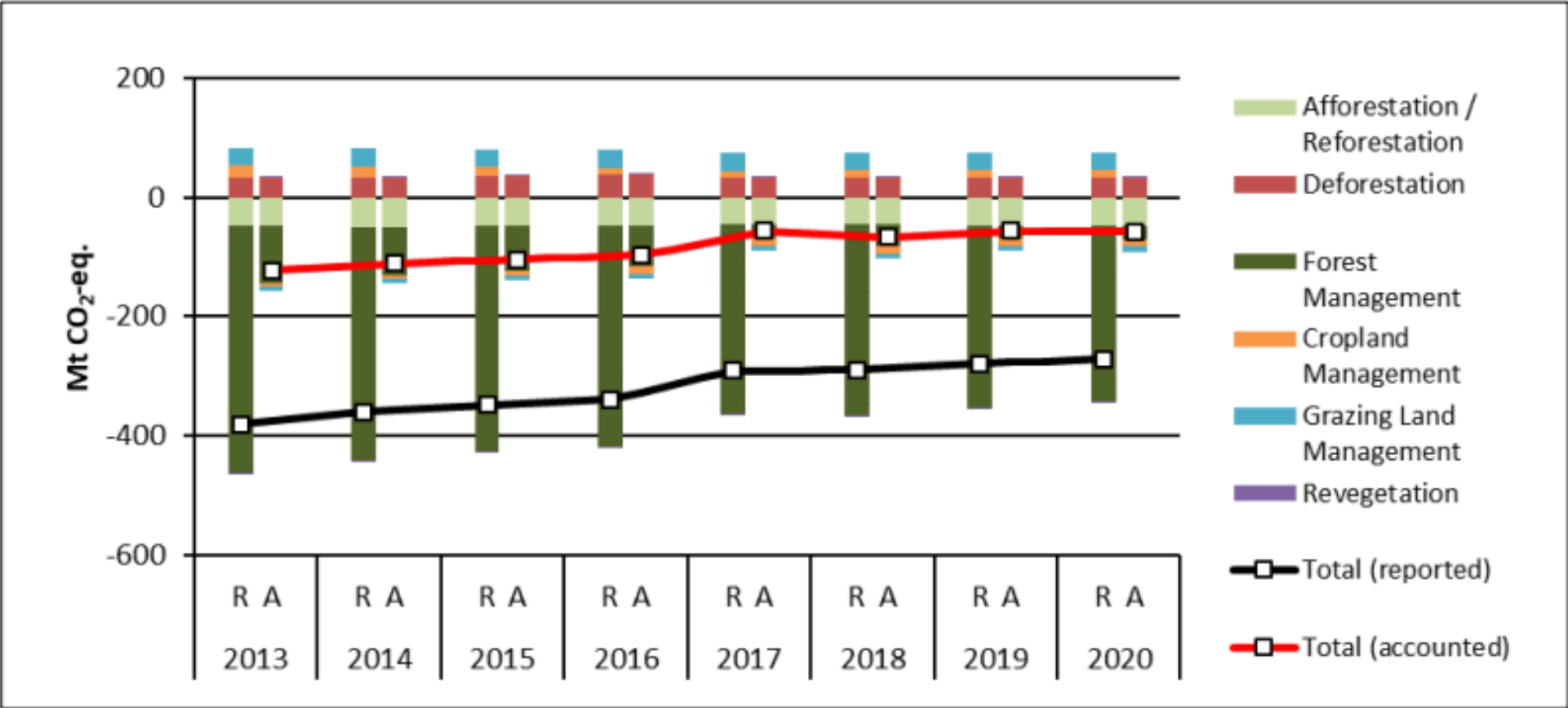


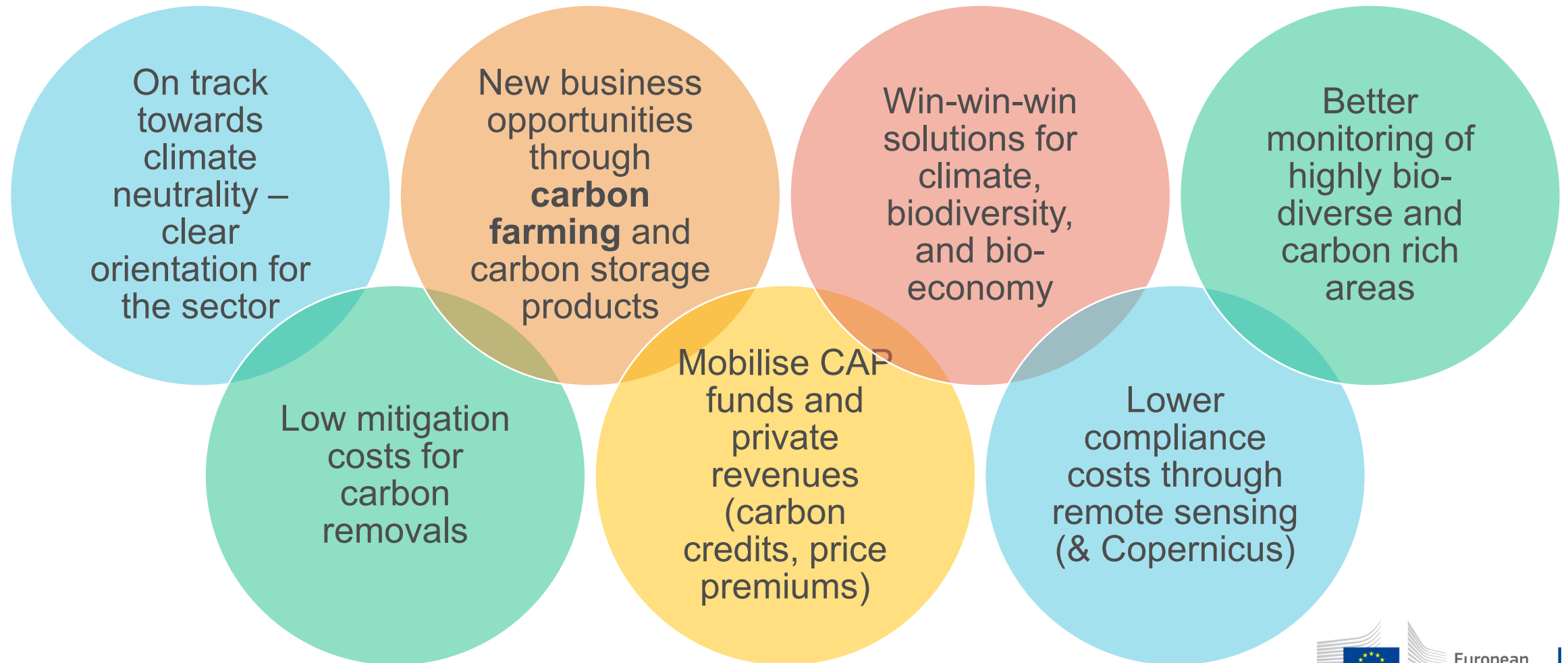


Figure 11: Reported (R) and preliminary accounted (A) emissions and removals under the Kyoto Protocol, second commitment period, EU-27<sup>56</sup>

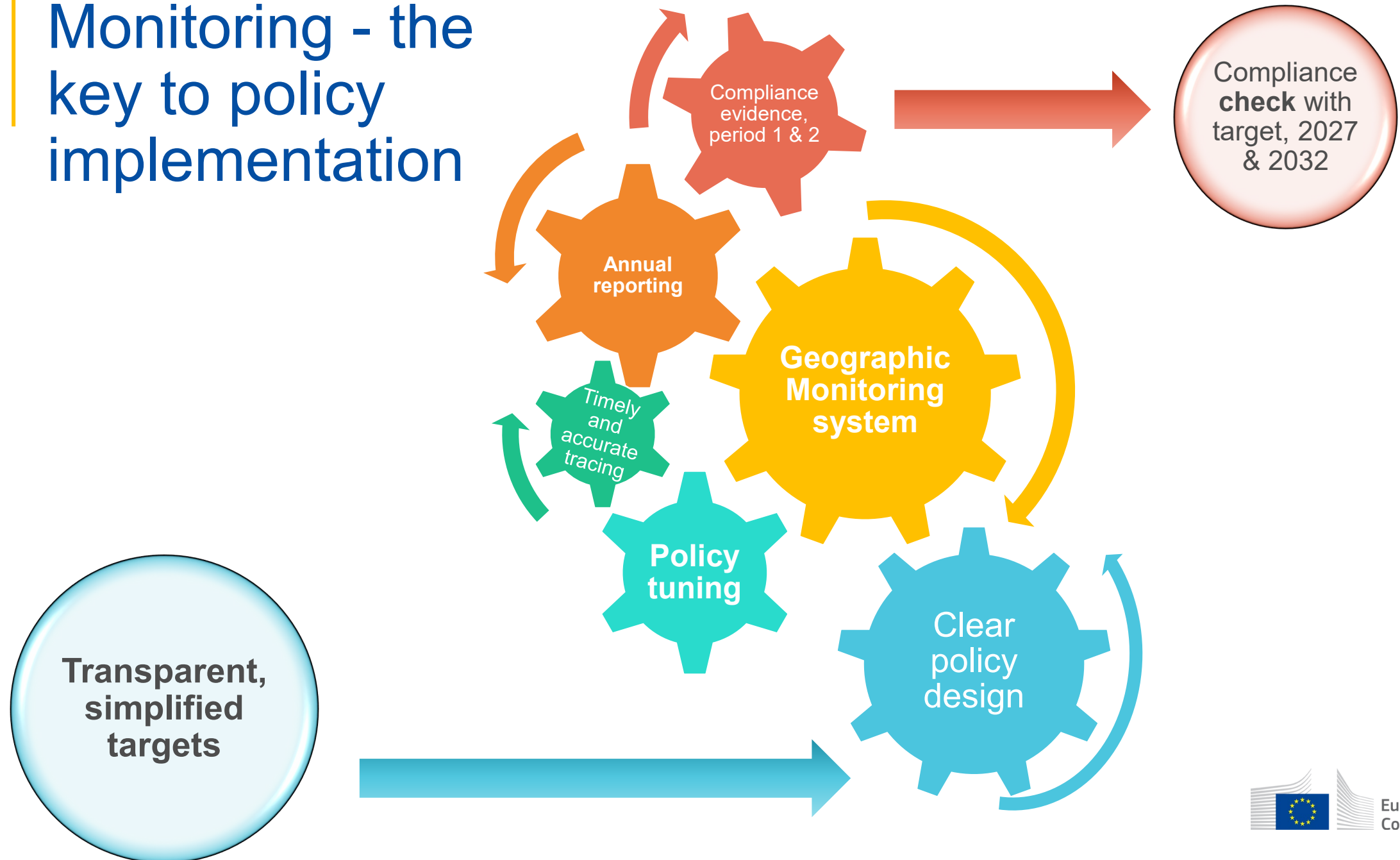


Ref: Climate Action Progress Report, 2022

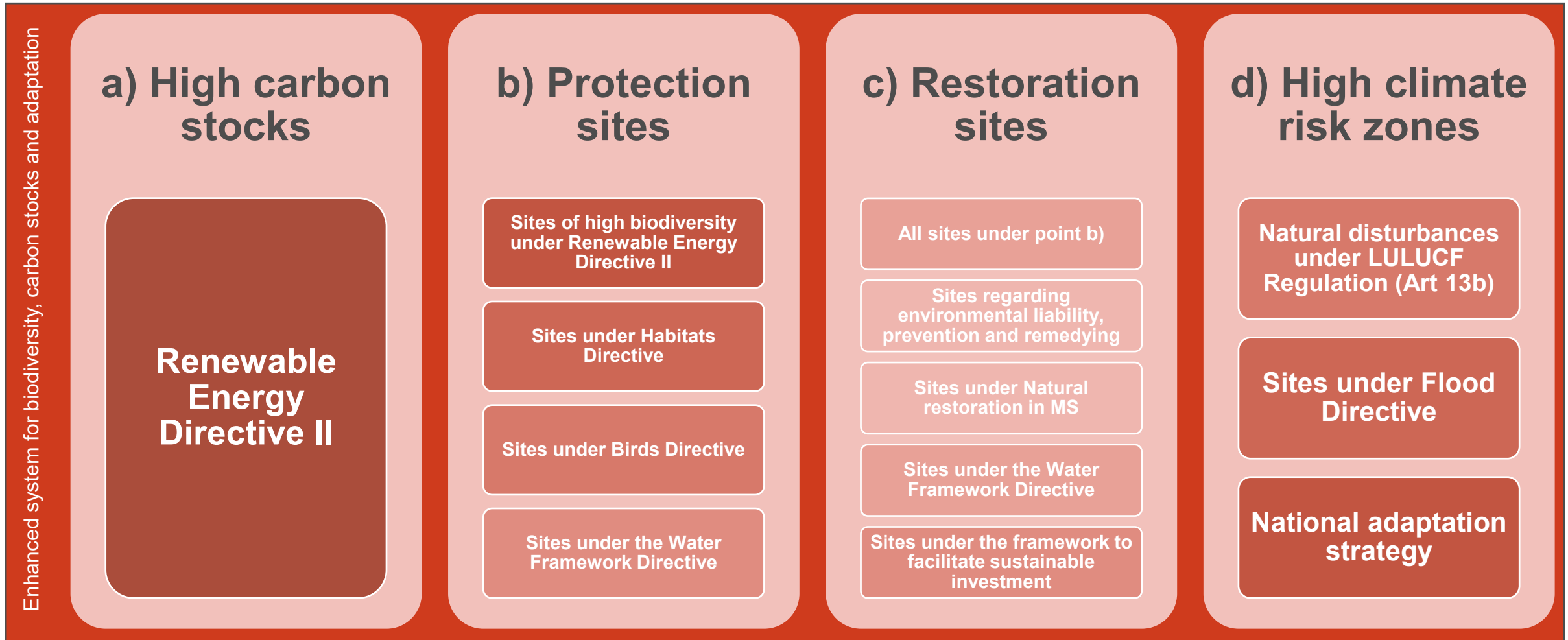
# Environmental benefits *and* opportunities



# Monitoring - the key to policy implementation

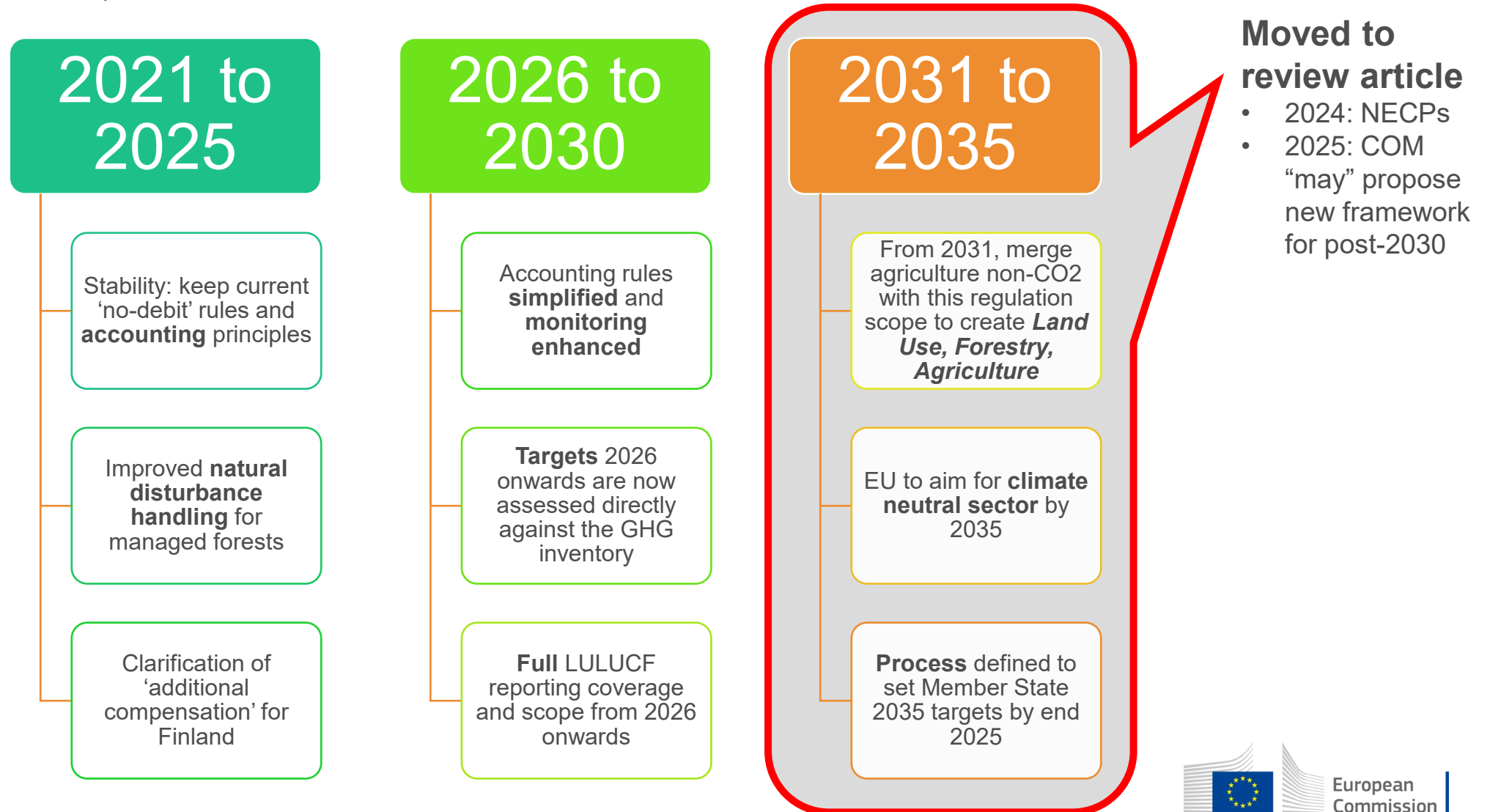


# Enhanced LULUCF monitoring system





# Regulatory stability, transition to reporting-based approach, and climate-neutral framework



# The 2030 target allocation

European Union



Member State



# The 2030 target allocation (see Annex IIa)

Member State	LULUCF E/R av. 16-18 [Mt]	Man. land area av. 16-18 [km <sup>2</sup> ]	Man. land area av. 16-18 [%]	Relative target 2030 [Mt]	End-point 2030 [Mt]	Member State	LULUCF E/R av. 16-18 [Mt]	Man. land area av. 16-18 [km <sup>2</sup> ]	Man. land area av. 16-18 [%]	Relative target 2030 [Mt]	End-point 2030 [Mt]
Belgium	-1.0	30,528	0.8	-0.3	-1.4	Lithuania	-4.0	63,061	1.6	-0.7	-4.6
Bulgaria	-8.6	111,002	2.7	-1.2	-9.7	Luxembourg	-0.4	2,586	0.1	0.0	-0.4
Czechia	-0.4	78,869	2.0	-0.8	-1.2	Hungary	-4.8	89,425	2.2	-0.9	-5.7
Denmark	5.8	42,053	1.0	-0.4	5.3	Malta	0.0	201	0.0	0.0	0.0
Germany	-27.1	357,901	8.9	-3.8	-30.8	Netherlands	5.0	41,530	1.0	-0.4	4.5
Estonia	-2.1	41,358	1.0	-0.4	-2.5	Austria	-4.8	83,870	2.1	-0.9	-5.6
Ireland	4.4	59,432	1.5	-0.6	3.7	Poland	-34.8	312,713	7.7	-3.3	-38.1
Greece	-3.2	110,500	2.7	-1.2	-4.4	Portugal	-0.4	92,393	2.3	-1.0	-1.4
Spain	-38.3	506,510	12.5	-5.3	-43.6	Romania	-23.3	228,299	5.7	-2.4	-25.7
France	-27.4	638,602	15.8	-6.7	-34.0	Slovenia	0.1	20,273	0.5	-0.2	-0.1
Croatia	-4.9	56,594	1.4	-0.6	-5.5	Slovakia	-6.3	48,095	1.2	-0.5	-6.8
Italy	-32.6	301,336	7.5	-3.2	-35.8	Finland	-14.9	275,408	6.8	-2.9	-17.8
Cyprus	-0.3	6,018	0.1	-0.1	-0.4	Sweden	-43.4	377,027	9.3	-4.0	-47.3
Latvia	0.0	61,059	1.5	-0.6	-0.6	Total	-267.7	4,036,645	100.0	-42.3	-310.0

# Thank you! Questions?

See the LULUCF Impact Assessment: <https://europa.eu/!NG7K6U>

upgrade amendment proposal: <https://europa.eu/!jPjNFP>

Carbon Removal Certification proposal: <https://europa.eu/!8mGymM>



© European Union 2023

Unless otherwise noted the reuse of this presentation is authorised under the [CC BY 4.0](https://creativecommons.org/licenses/by/4.0/) license. For any use or reproduction of elements that are not owned by the EU, permission may need to be sought directly from the respective right holders.