

EU Market Situation for Poultry

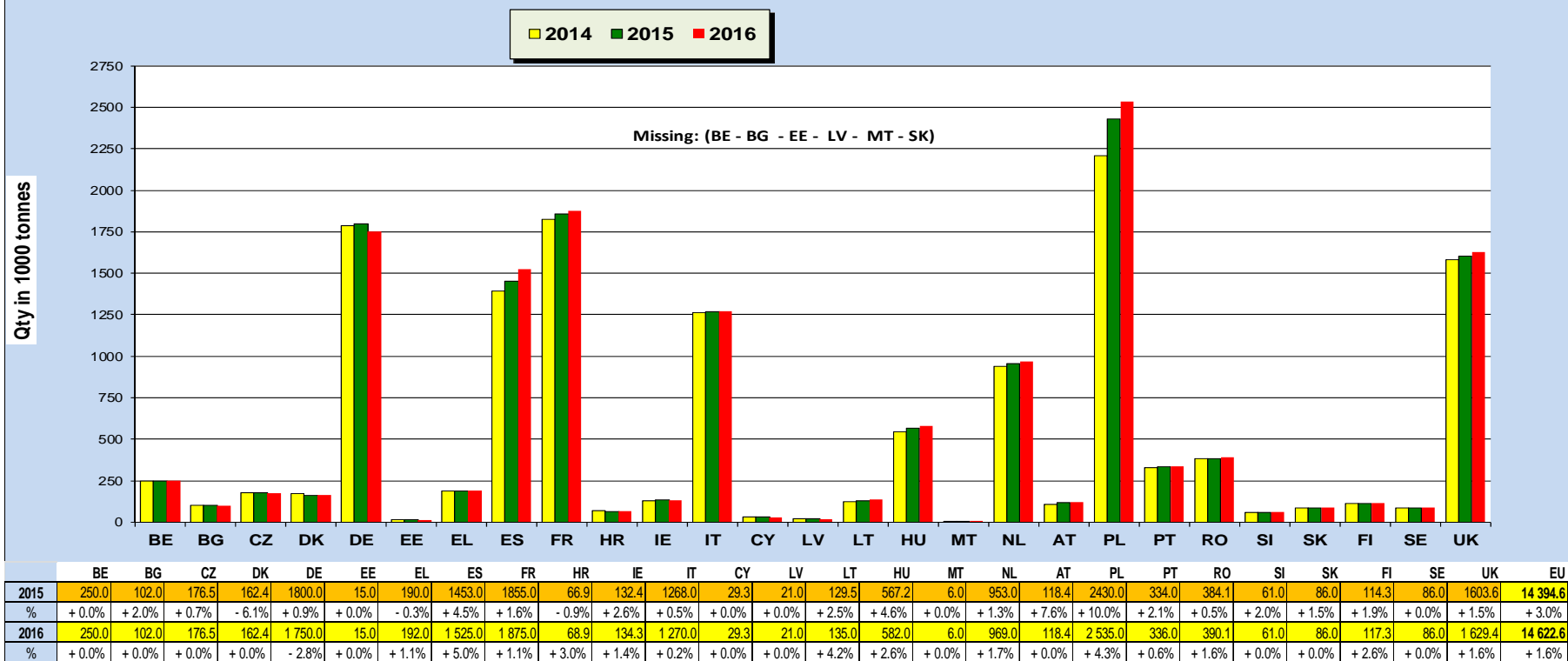
Civil Dialogue Group

07 October 2015



Experts EU production forecast of Poultry Meat

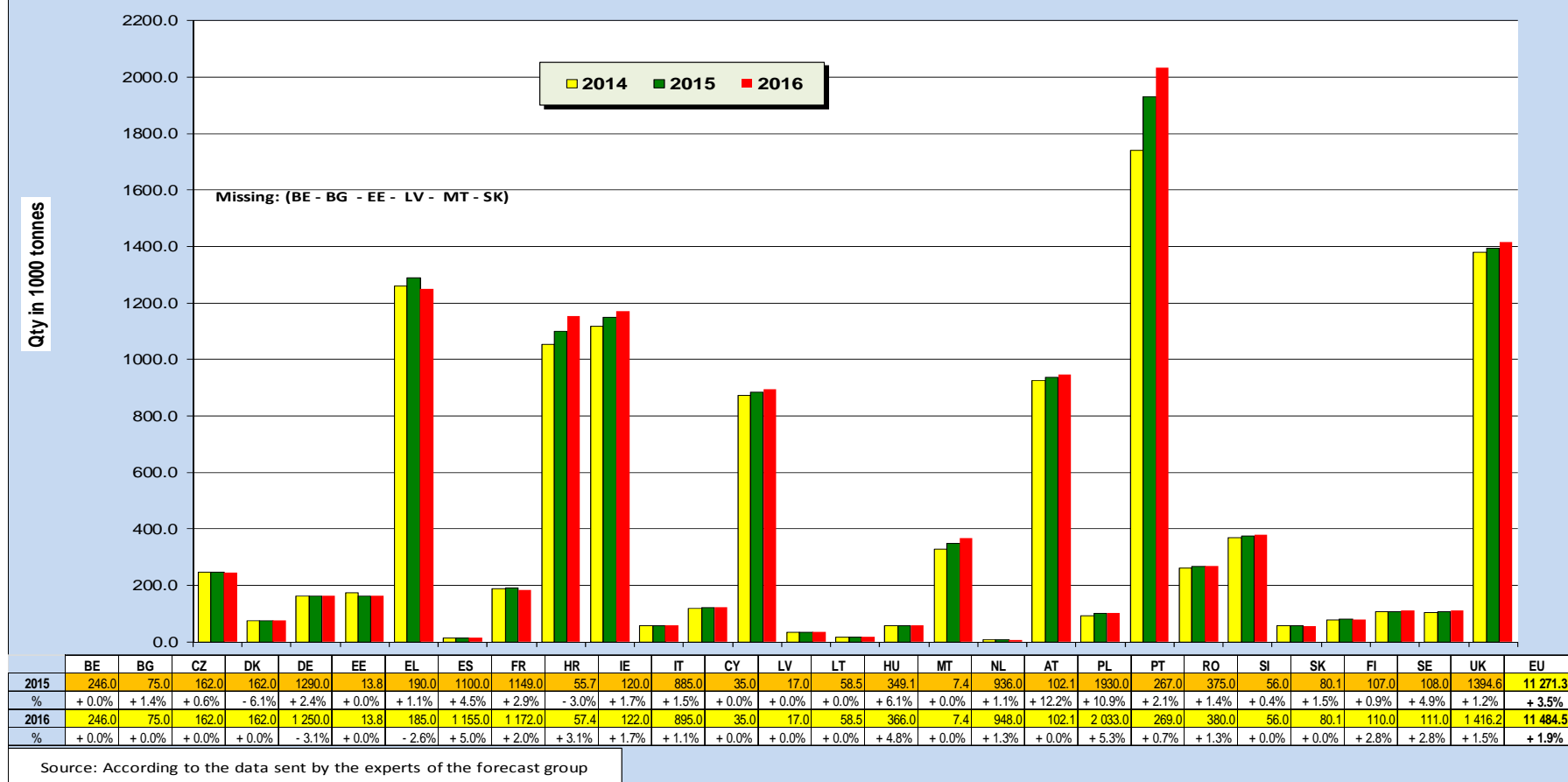
2015: 14 394.6 th T (+ 3.0 %) & 2016: 14 622 thT (+ 1.6 %)



Source: According to the data sent by the experts of the forecast group

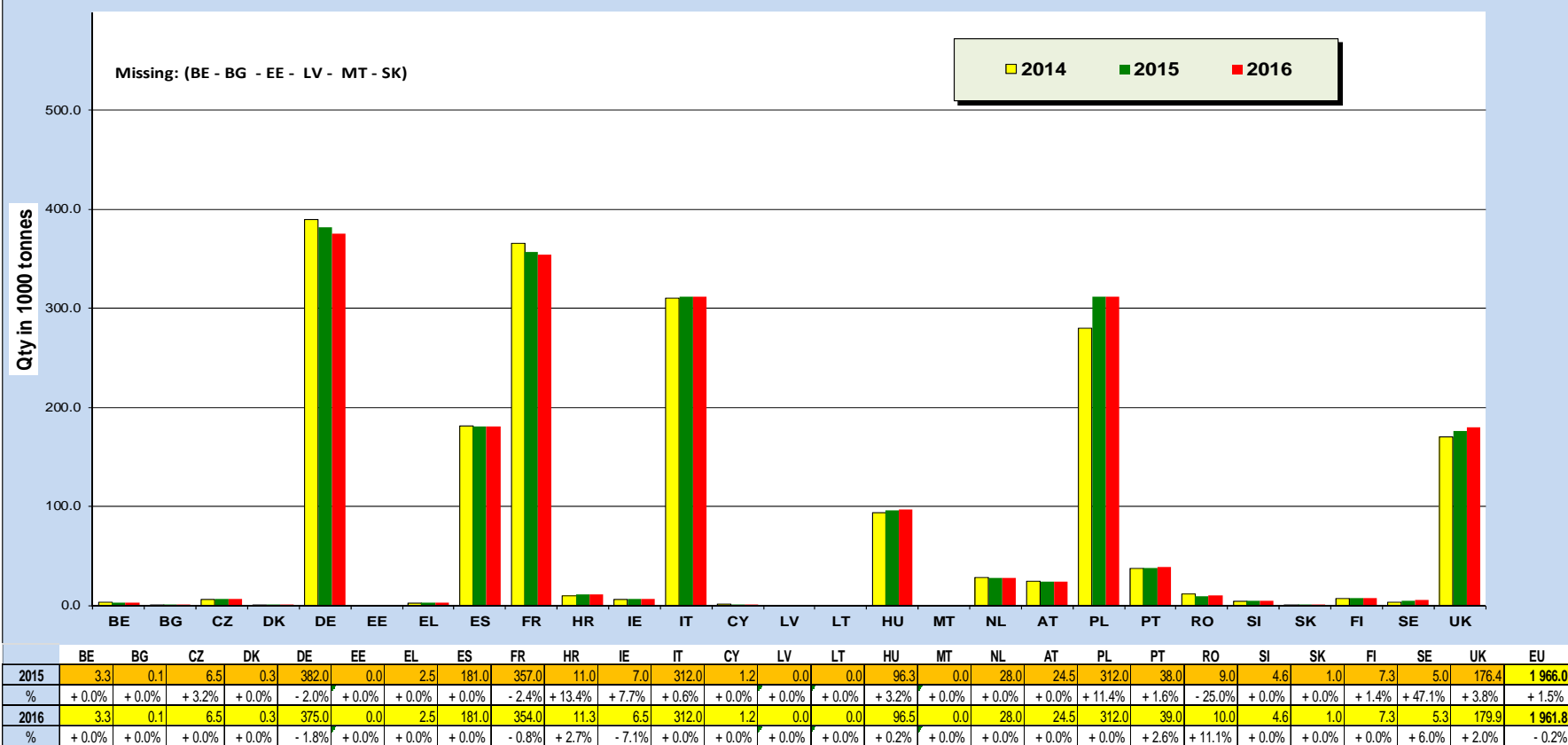
Experts EU production forecast of Broiler Meat

2015: 11 271.3 th T (+3,5 %) & 2016: 11 484.5 thT (+1,9 %)



Experts EU production forecast of Turkey Meat

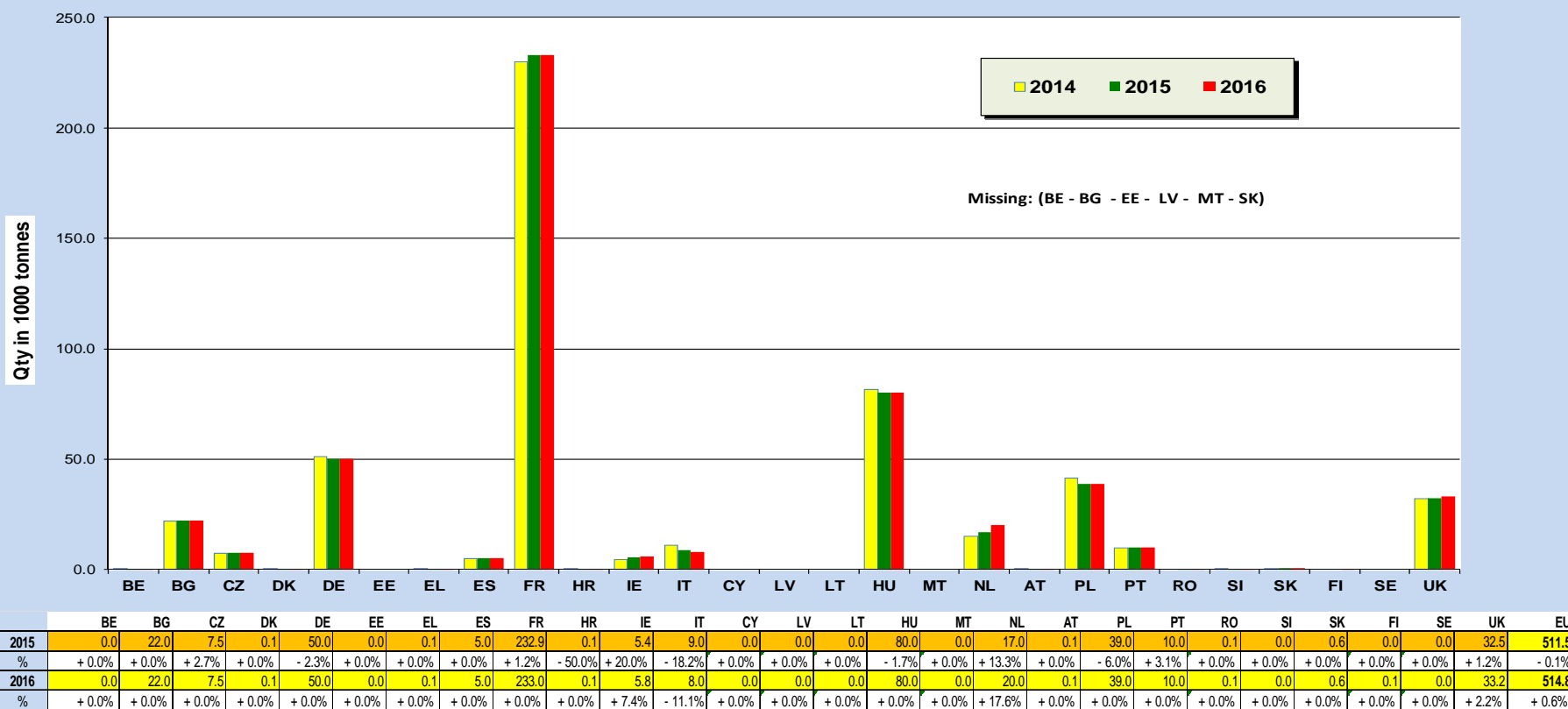
2015: 1 966.0 th T (+ 1.5 %) & 2016: 1 961.8 th T (- 0.2 %)



Source: According to the data sent by the experts of the forecast group

Experts EU production forecast of Duck Meat

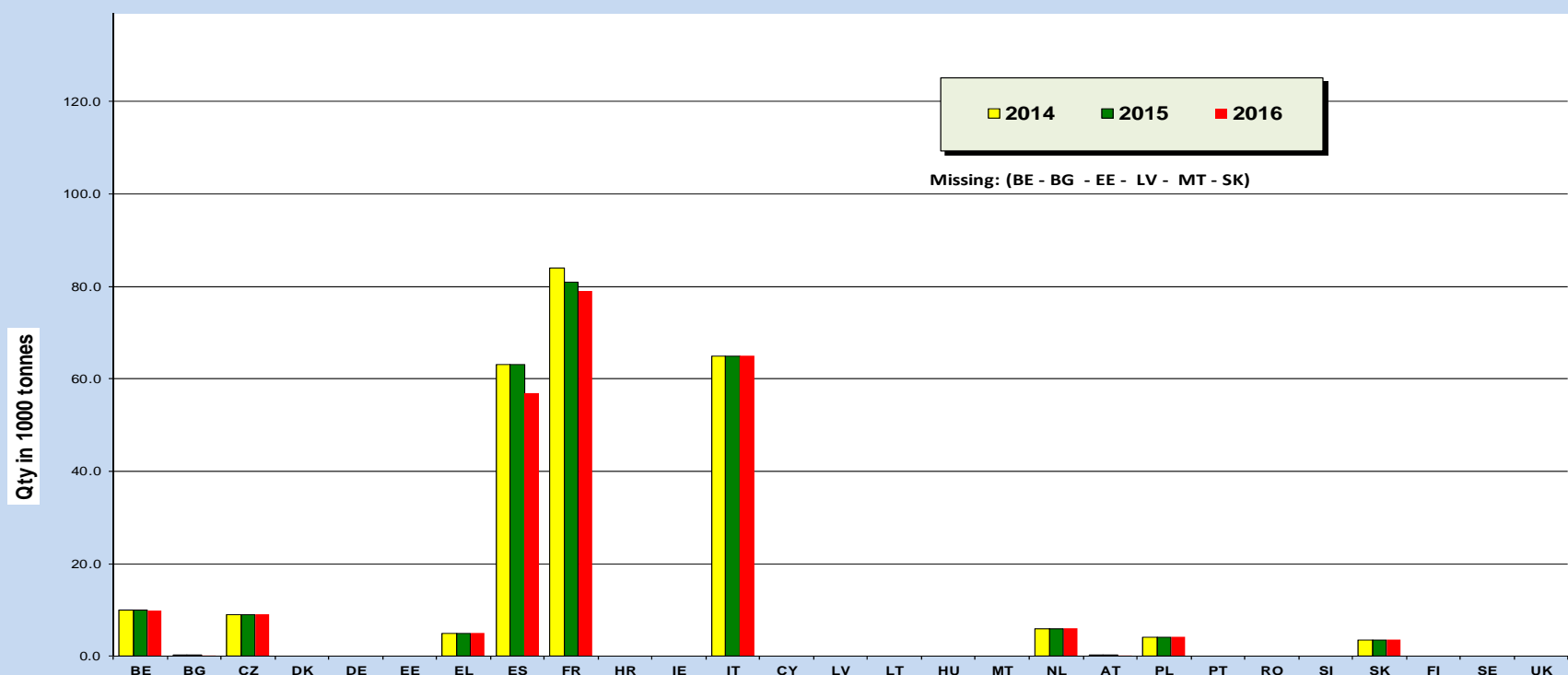
2015: 511.5 th T (- 0.1 %) & 2016: 514.8 thT (+ 0.6 %)



Source: According to the data sent by the experts of the forecast group

Experts EU production forecast of Rabbit Meat

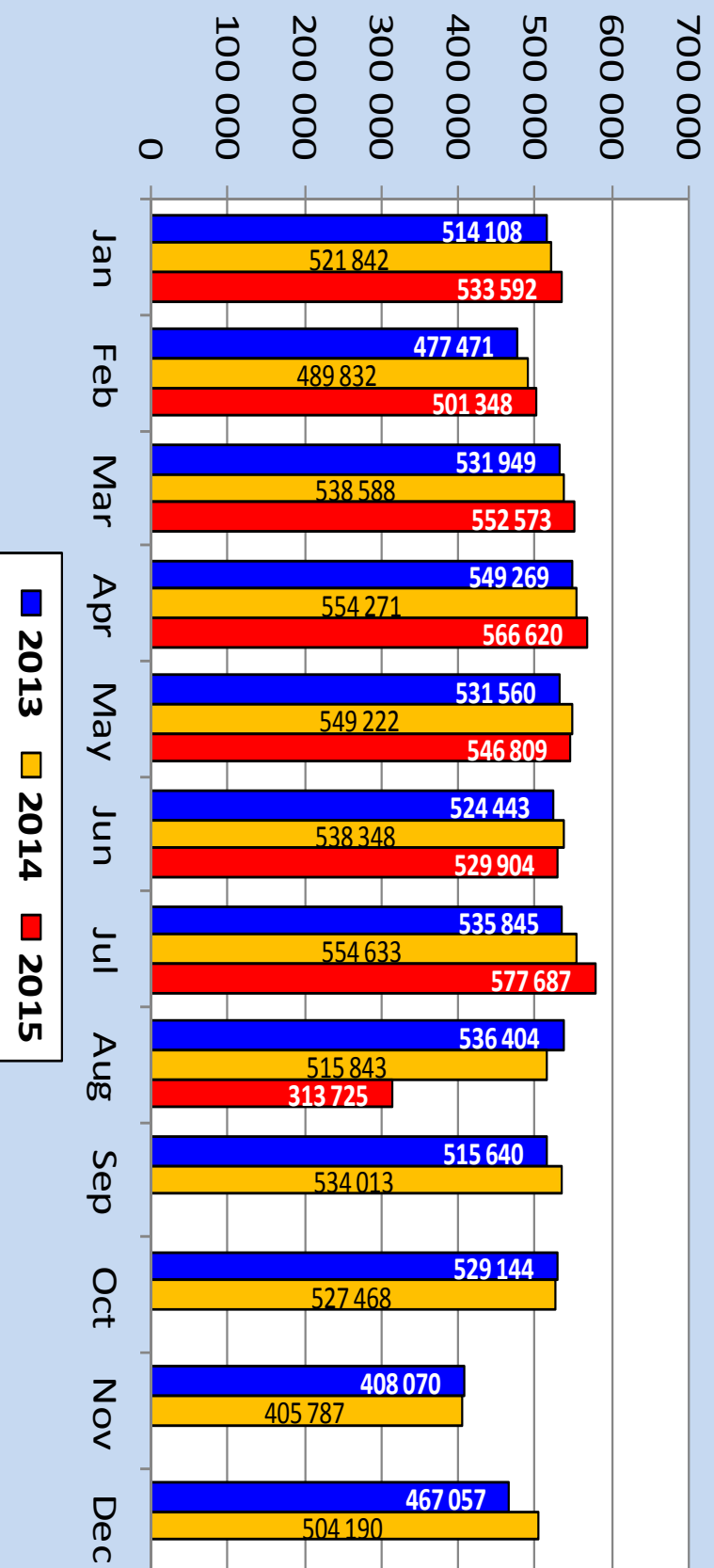
2015: 247 th T (- 1.2 %) & 2016: 239 th T (- 3.2 %)



| | BE | BG | CZ | DK | DE | EE | EL | ES | FR | HR | IE | IT | CY | LV | LT | HU | MT | NL | AT | PL | PT | RO | SI | SK | FI | SE | UK | EU |
|------|--------|--------|--------|--------|--------|--------|--------|--------|--------|--------|--------|--------|--------|--------|--------|--------|--------|--------|--------|--------|--------|--------|--------|--------|--------|--------|--------|--------|
| 2015 | 10.0 | 0.0 | 9.0 | 0.0 | 0.0 | 0.0 | 5.0 | 63.0 | 81.0 | 0.0 | 0.0 | 65.0 | 0.0 | 0.0 | 0.0 | 0.0 | 0.0 | 6.0 | 0.2 | 4.2 | 0.0 | 0.0 | 0.0 | 3.6 | 0.0 | 0.0 | 0.0 | 247.0 |
| % | + 0.0% | + 0.0% | + 0.0% | + 0.0% | + 0.0% | + 0.0% | + 0.0% | + 0.0% | - 3.6% | + 0.0% | + 0.0% | + 0.0% | + 0.0% | + 0.0% | + 0.0% | + 0.0% | + 0.0% | + 0.0% | + 0.0% | + 0.0% | + 0.0% | + 0.0% | + 0.0% | + 0.0% | + 0.0% | + 0.0% | + 0.0% | - 1.2% |
| 2016 | 10.0 | 0.0 | 9.0 | 0.0 | 0.0 | 0.0 | 5.0 | 57.0 | 79.0 | 0.0 | 0.0 | 65.0 | 0.0 | 0.0 | 0.0 | 0.0 | 0.0 | 6.0 | 0.2 | 4.2 | 0.0 | 0.0 | 0.0 | 3.6 | 0.0 | 0.0 | 0.0 | 239.0 |
| % | + 0.0% | + 0.0% | + 0.0% | + 0.0% | + 0.0% | + 0.0% | + 0.0% | - 9.5% | - 2.5% | + 0.0% | + 0.0% | + 0.0% | + 0.0% | + 0.0% | + 0.0% | + 0.0% | + 0.0% | + 0.0% | + 0.0% | + 0.0% | + 0.0% | + 0.0% | + 0.0% | + 0.0% | + 0.0% | + 0.0% | + 0.0% | - 3.2% |

Source: According to the data sent by the experts of the forecast group

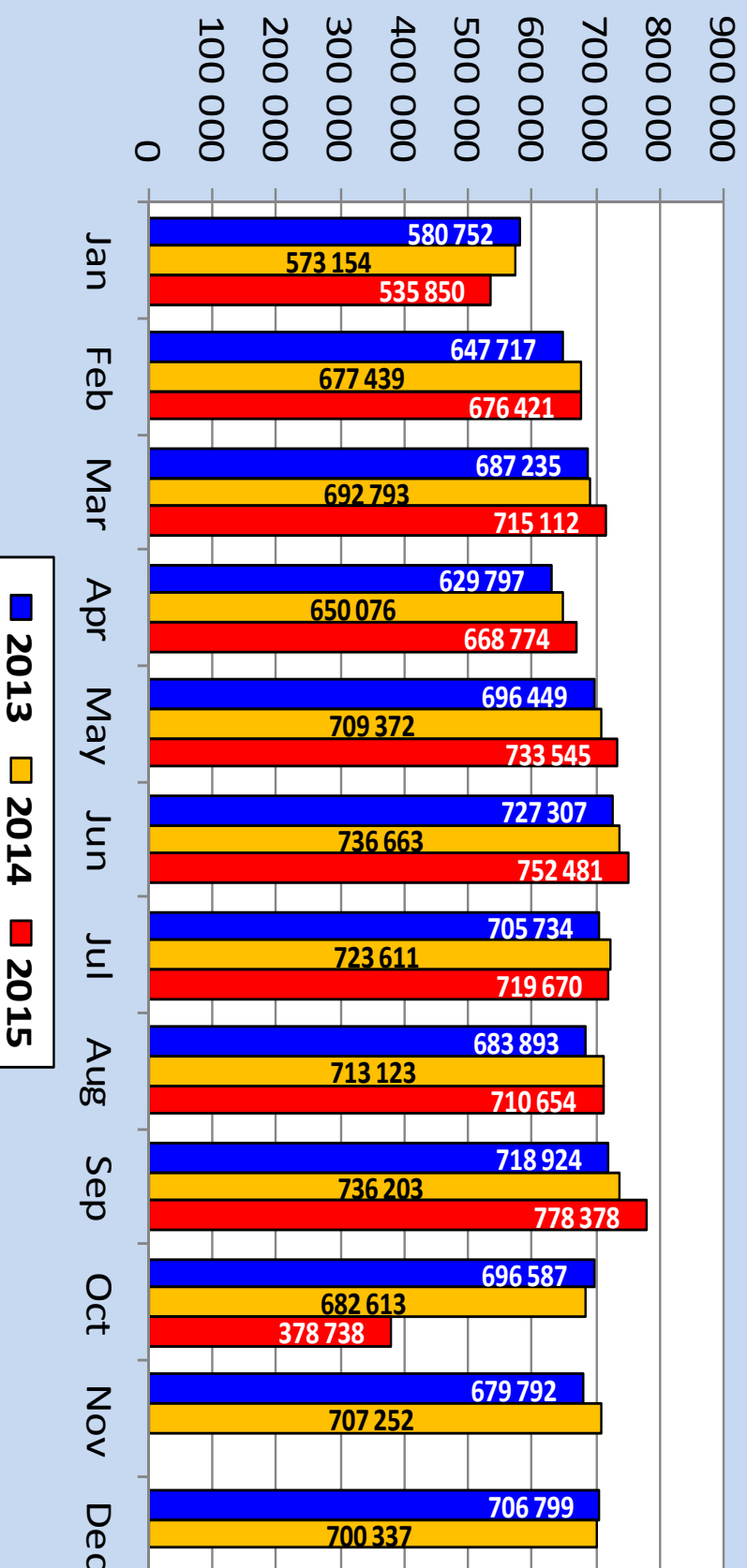
Placings of broiler chicks (1 000 pieces)



Parameters for the calculation of the estimated production of broilers

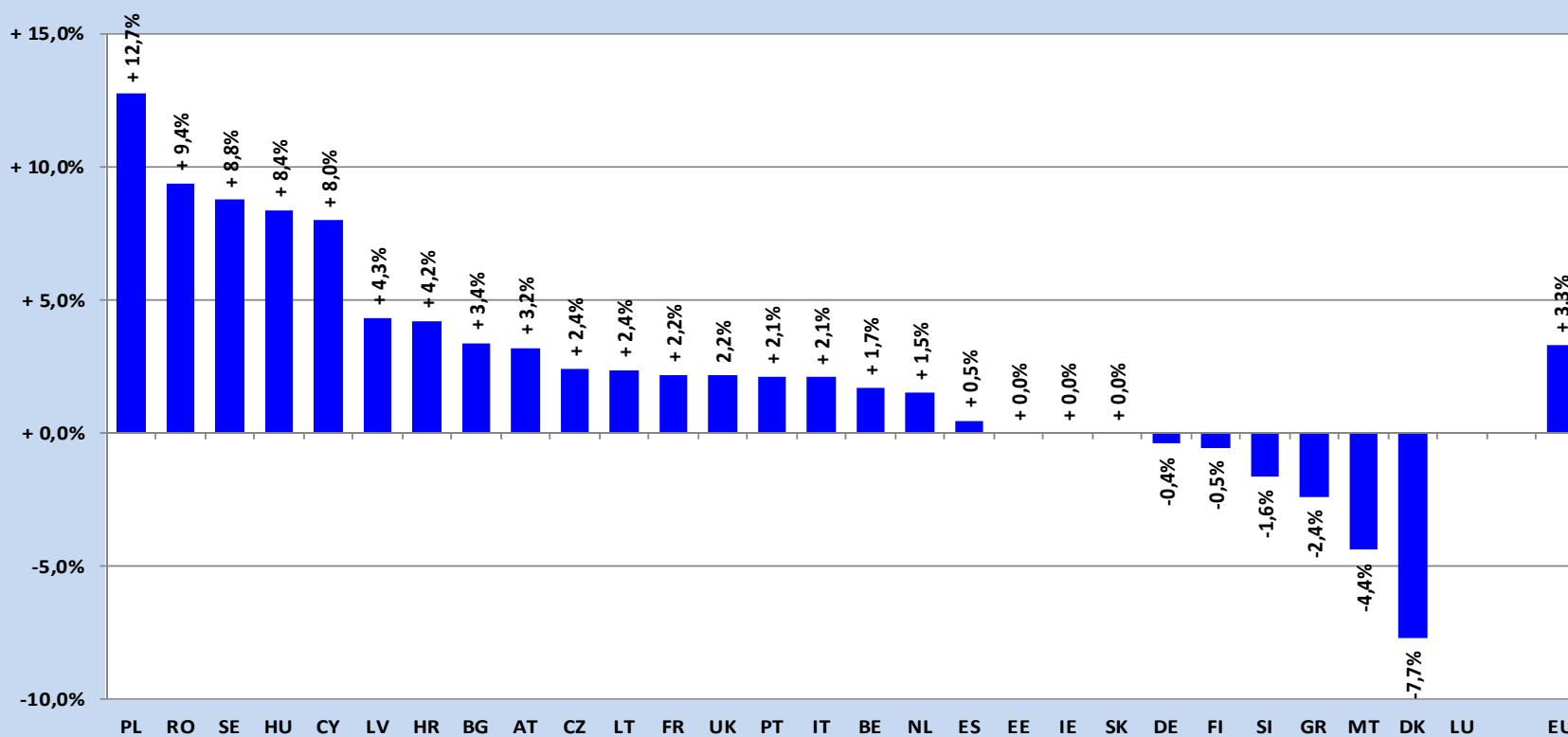
| | BE | BG | CZ | DK | DE | EE | GR | ES | FR | HR | IE | IT | CY | LV | LT | LU | HU | MT | NL | AT | PL | PT | RO | SI | SK | FI | SE | UK |
|--|------|-------|-------|-------|-------------------------------|-------------------|-------|-------|-------|-------|-------|-------|-------|-------|-------|------|-------|------|-------|-------|-------|-------|-------|-------|-------|-------|-------|-------|
| Parameter | 2013 | | | | | | | | | | | | | | | | | | | | | | | | | | | |
| National Average Live weight (kg) at Slaughter | 2,40 | 2,10 | 1,90 | 2,10 | 2,11 | 2,39 | 2,40 | 2,66 | 2,02 | 1,99 | 2,04 | 2,60 | 2,64 | 2,10 | 2,44 | 2,40 | 2,33 | 2,55 | 2,23 | 1,83 | 2,44 | 1,85 | 2,20 | 2,20 | 2,12 | 2,34 | 1,91 | 2,23 |
| National Average Carcass yield (%) | 68% | 73,0% | 74,0% | 75,0% | 70,0% | 71,0% | 75,0% | 70,2% | 67,0% | 69,4% | 71,7% | 70,1% | 77,0% | 74,4% | 75,1% | 68% | 70,1% | | 74,0% | 66,0% | 75,0% | 69,9% | 72,4% | 70,5% | 72,5% | 72,5% | 75,0% | 69,0% |
| National Average Mortality (%) | 2,0% | 4,3% | 4,0% | 2,5% | 3.0-3.5% (l.w) 4.0% (h.w.) | 2,5% - 3,0% | 6,0% | 5,2% | 4,2% | 3,7% | 2,9% | 5,0% | 3,2% | 3,3% | 5,0% | 2,0% | 4,2% | 6,5% | 3,5% | 4,2% | 4,2% | 2,6% | 2,5% | 3,9% | 3,5% | 3,5% | | 4,8% |
| National Average Period of rearing (days) | 40,0 | 51* | 35,0 | 35,0 | 30 - 38 | 37 - 40 | 45,0 | 43,5 | 37,7 | 35,0 | 36,9 | 35/46 | 47,4 | 37,1 | 40,0 | 40,0 | 41,5 | 45,0 | 41,0 | 35,00 | 42,0 | 37,8 | 41,0 | 37,7 | 38,5 | 37,0 | | 42,0 |

Forecast and Production of broiler (In tonnes)

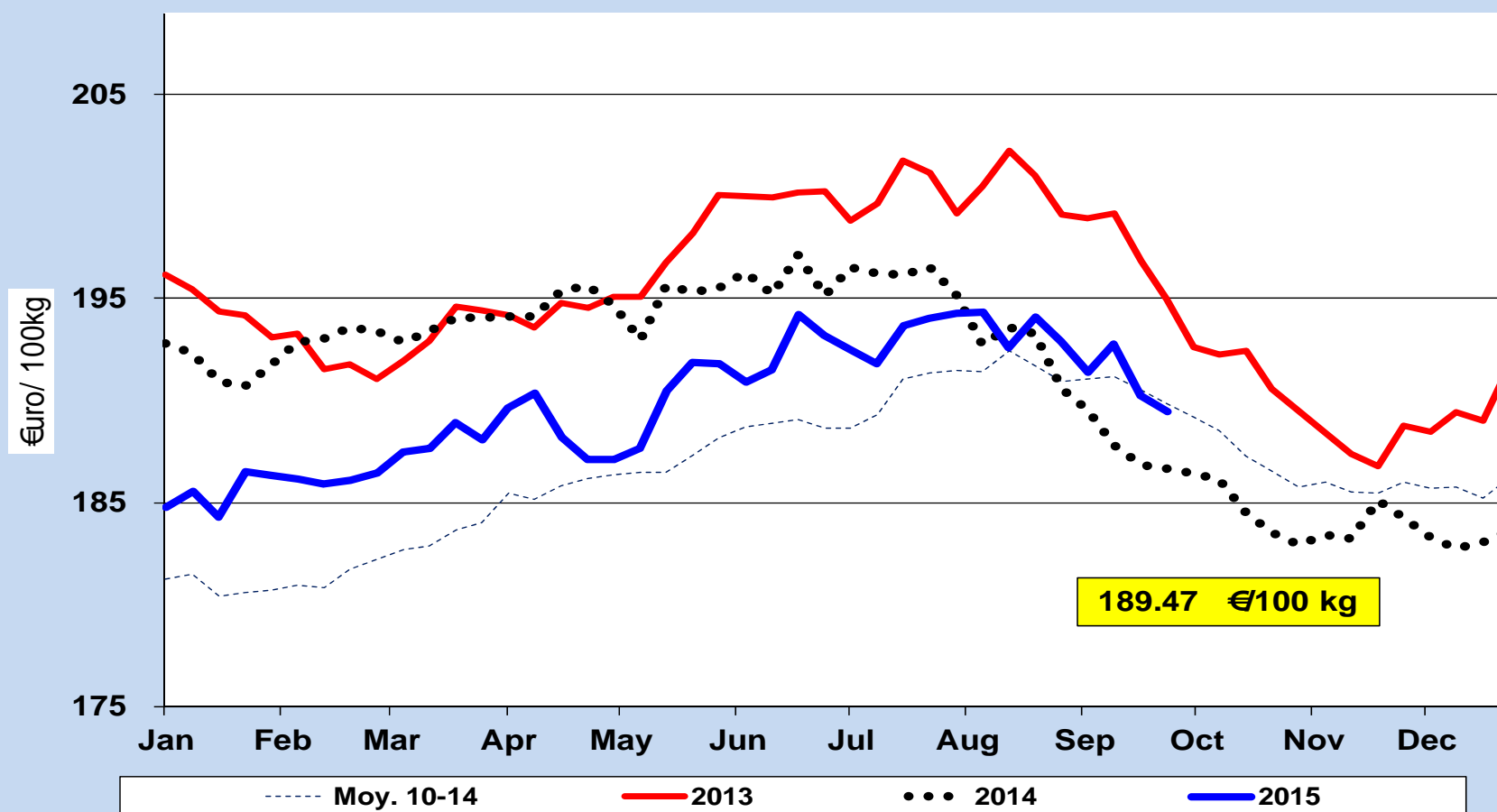


Change in **Poultry** slaughter

Jan.-June 2015 compared with Jan.-June 2014

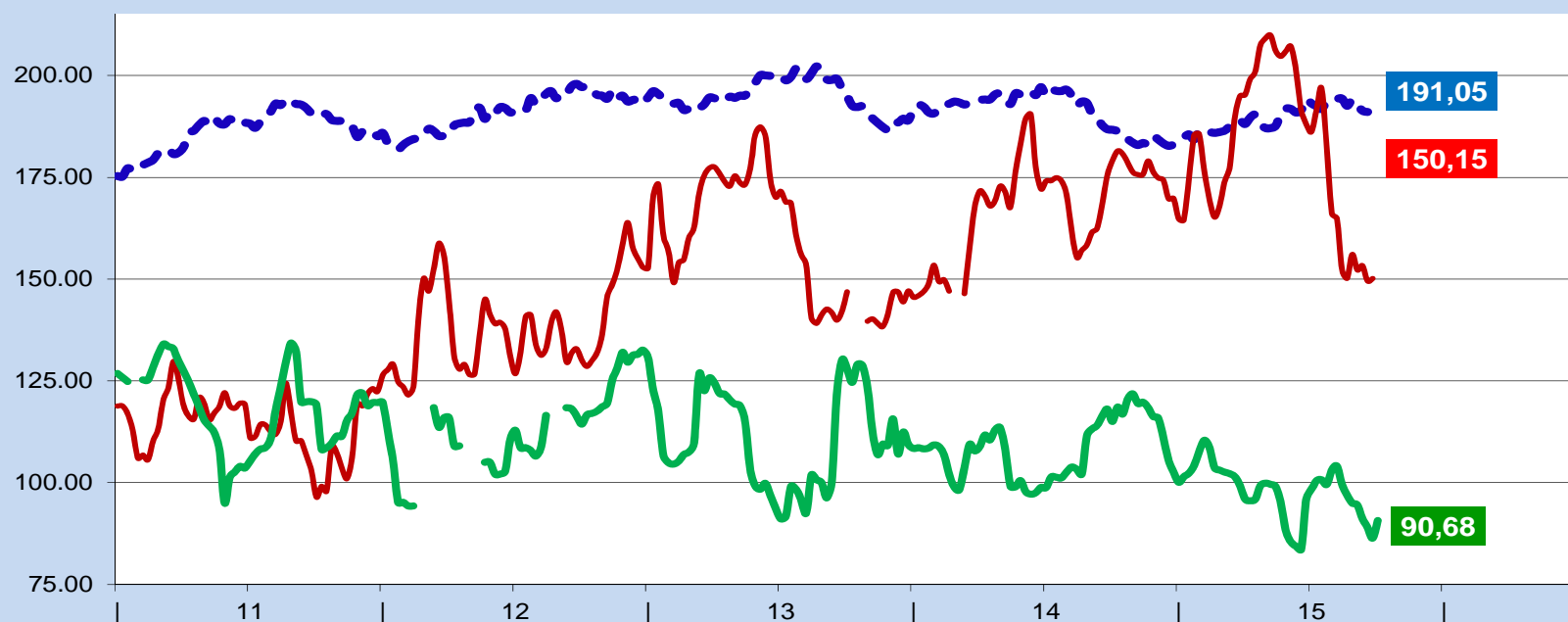


Evolution of the weekly EU average price for **Broiler**



Source: MSs weekly communications

Broiler prices in EU, USA and Brazil in €/100kg

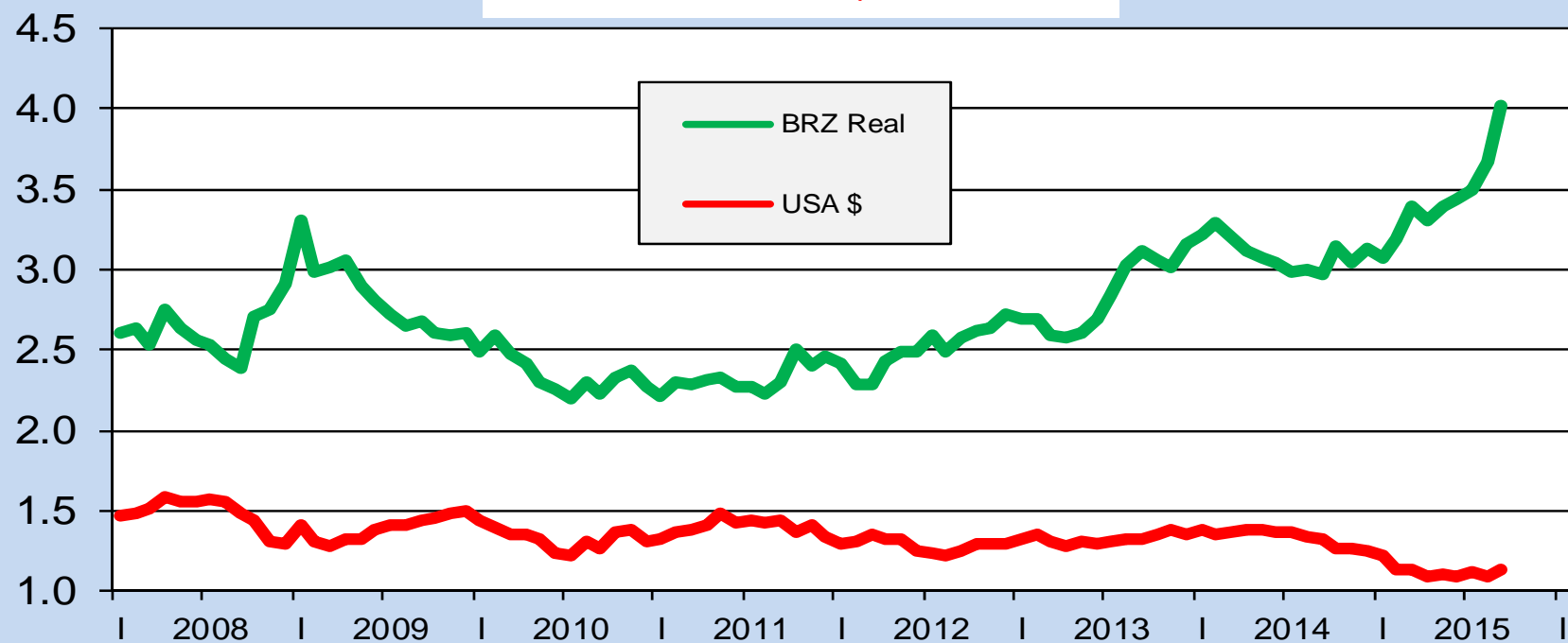


EU = weighted avg of MS prices Broiler 65%
 US = weekly USDA prices Fresh chicken grade A ,Chicago
 BR = avg of prices in main producing states (Ave world.com.br)

—•— EU broiler
 — US broiler €/100
 — BR Broil €/100 (Ave world)

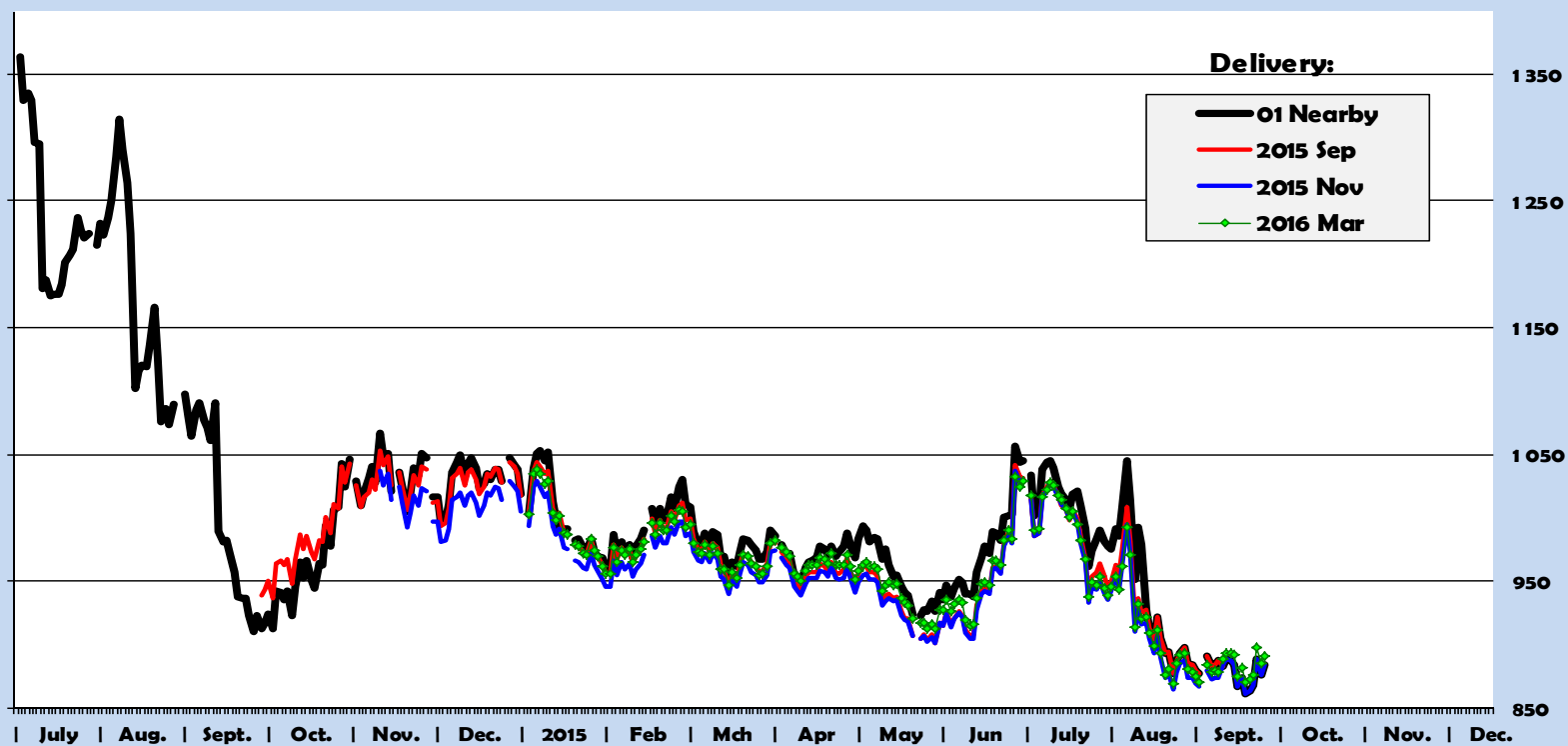
€uro Exchange rate

1 Euro =US\$ / BRZ Real/

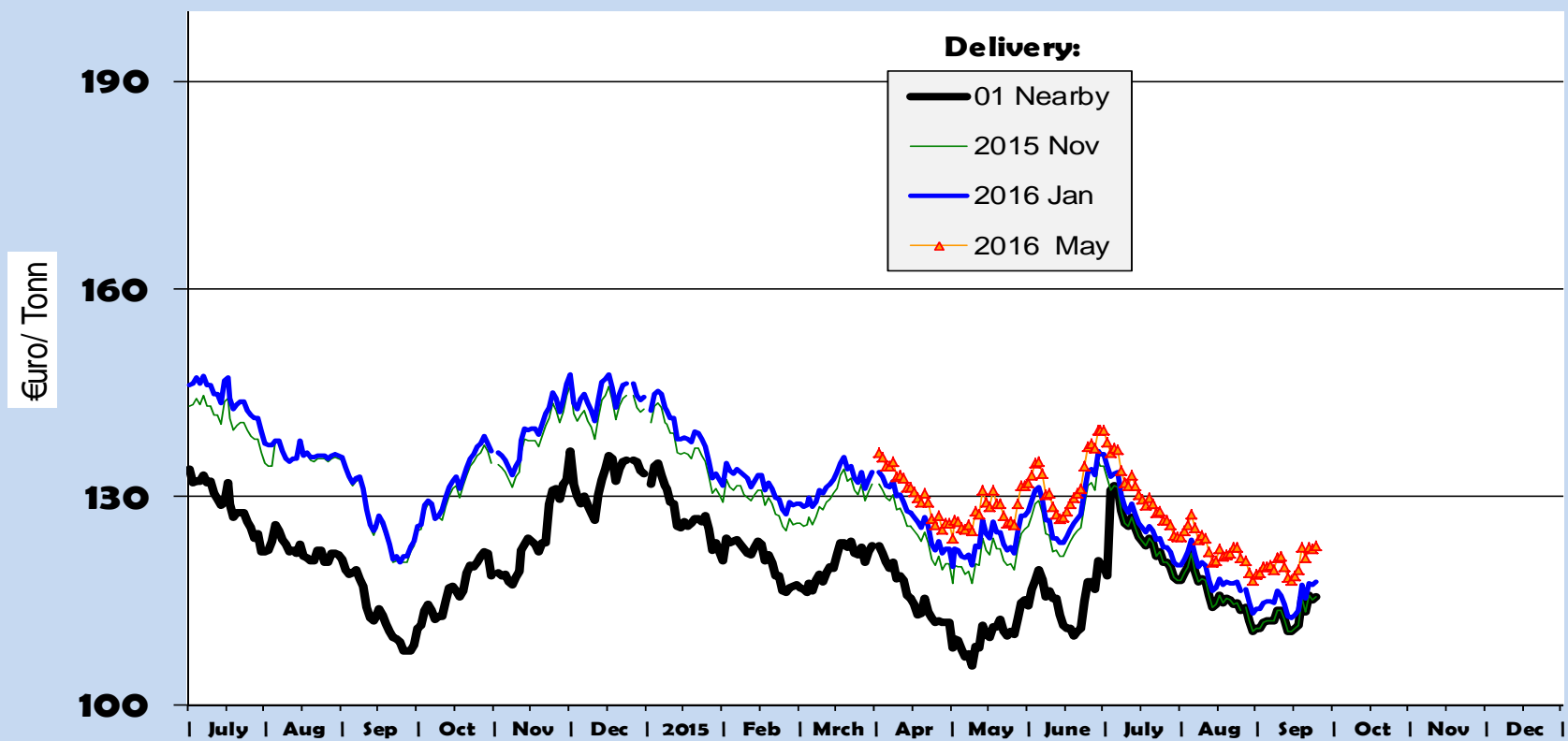


source:<http://europa.eu.int/comm/budget/inforeuro/fr/index.htm>

Futures for Soybeans in US\$/ Bushel (nearby = 2013 & 2014)

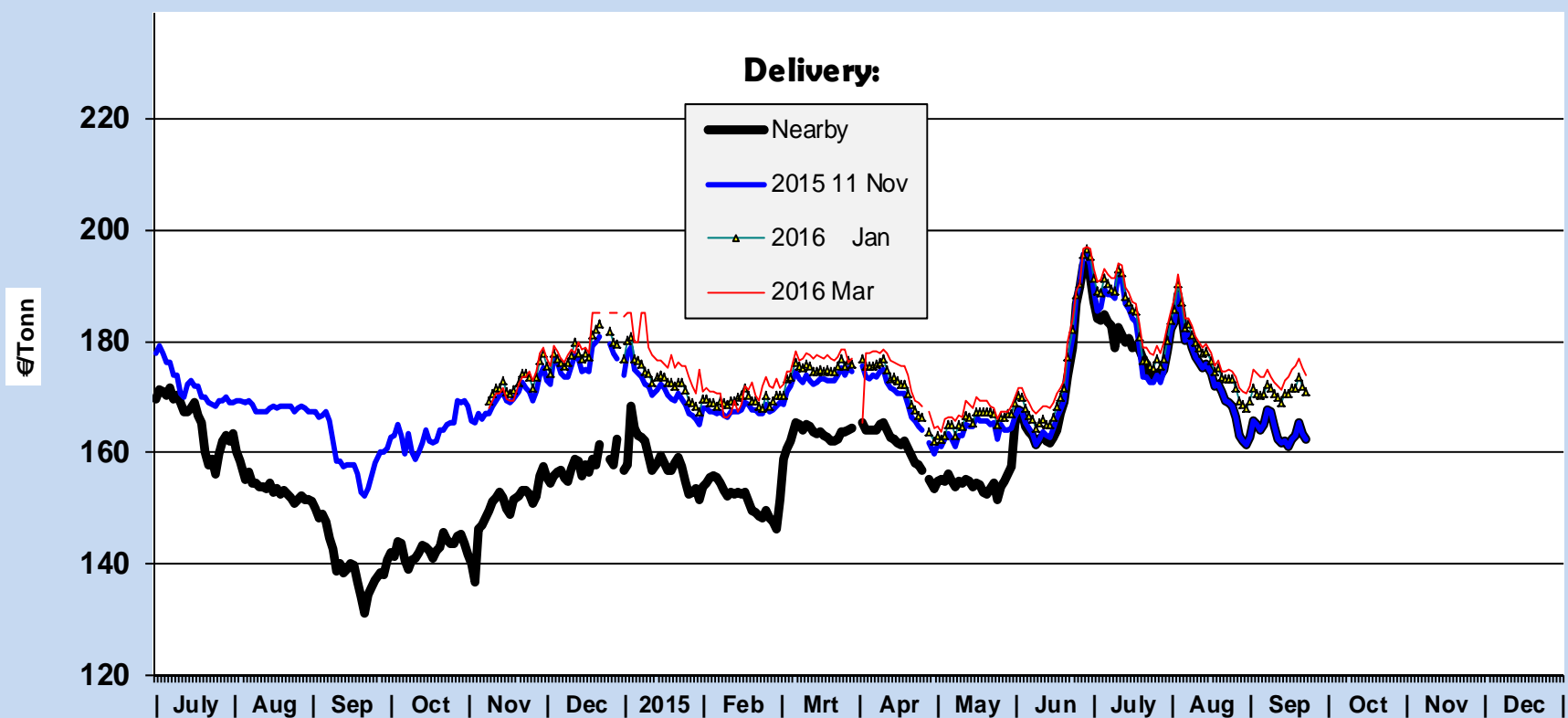


Futures for Feed wheat EU (Euronext) (Nearby = 2014 & 2015)

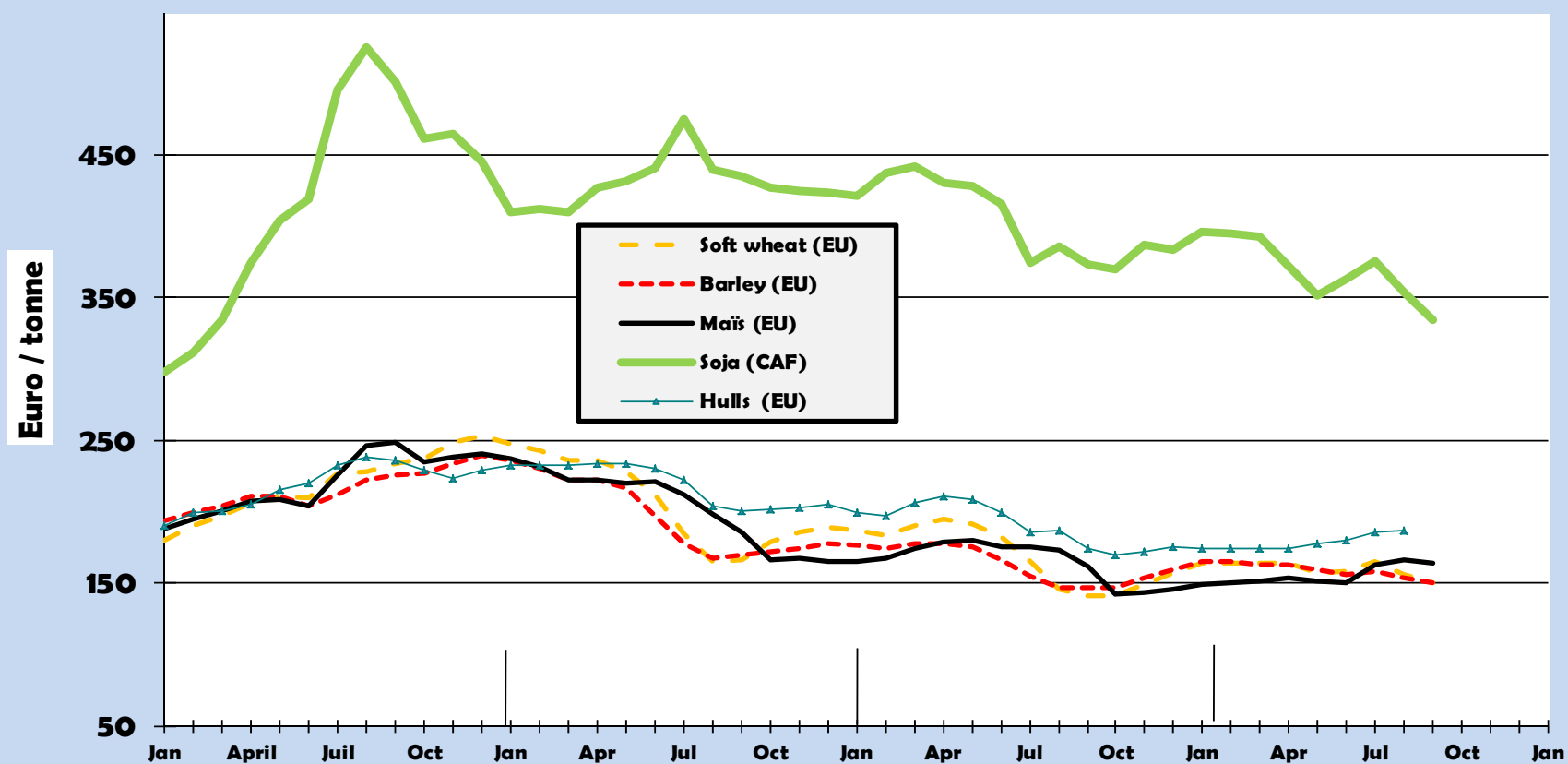


Futures for Maize EU (Euronext)

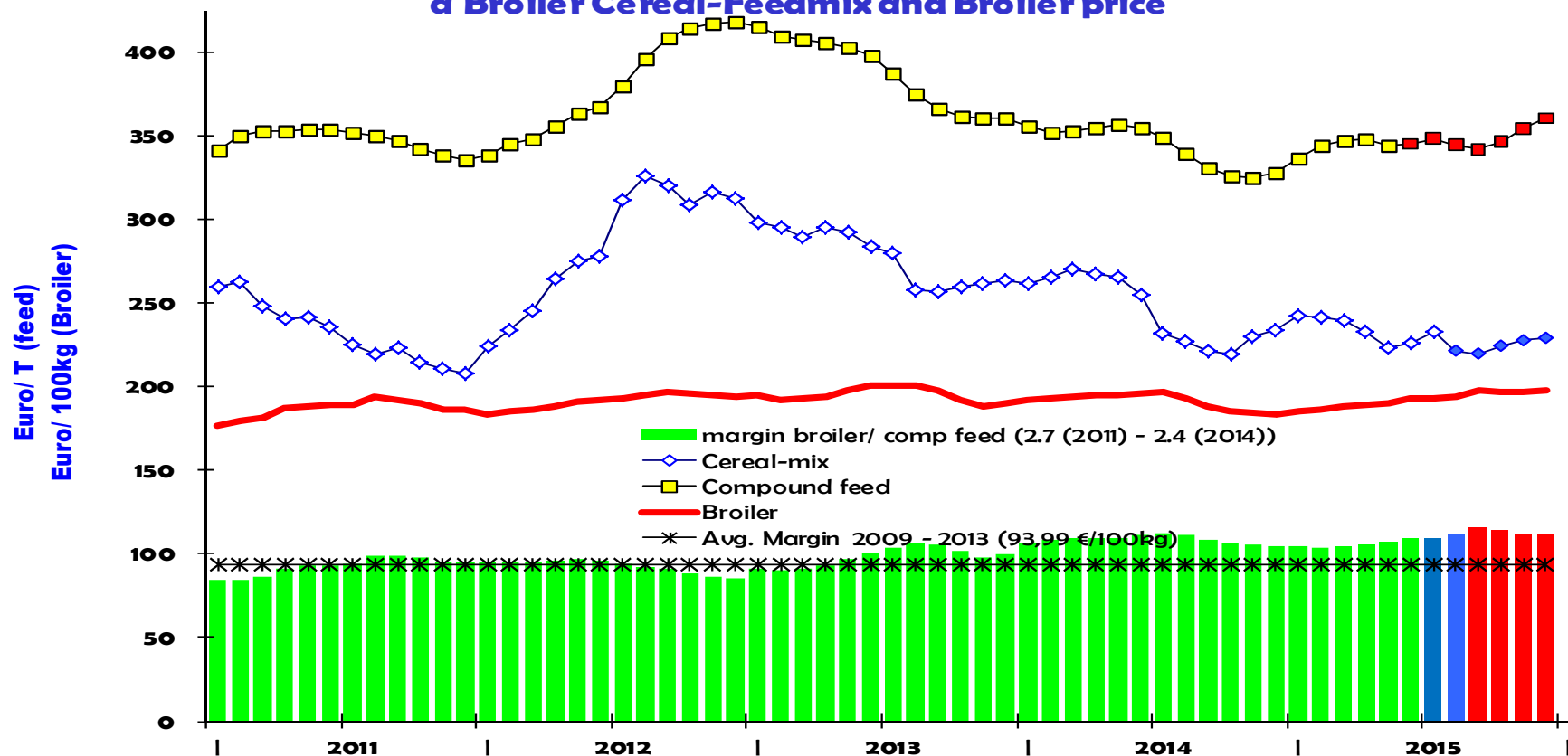
(Nearby = 2014 - 2015)



Price of Basic Ingredients 2012 - 2015

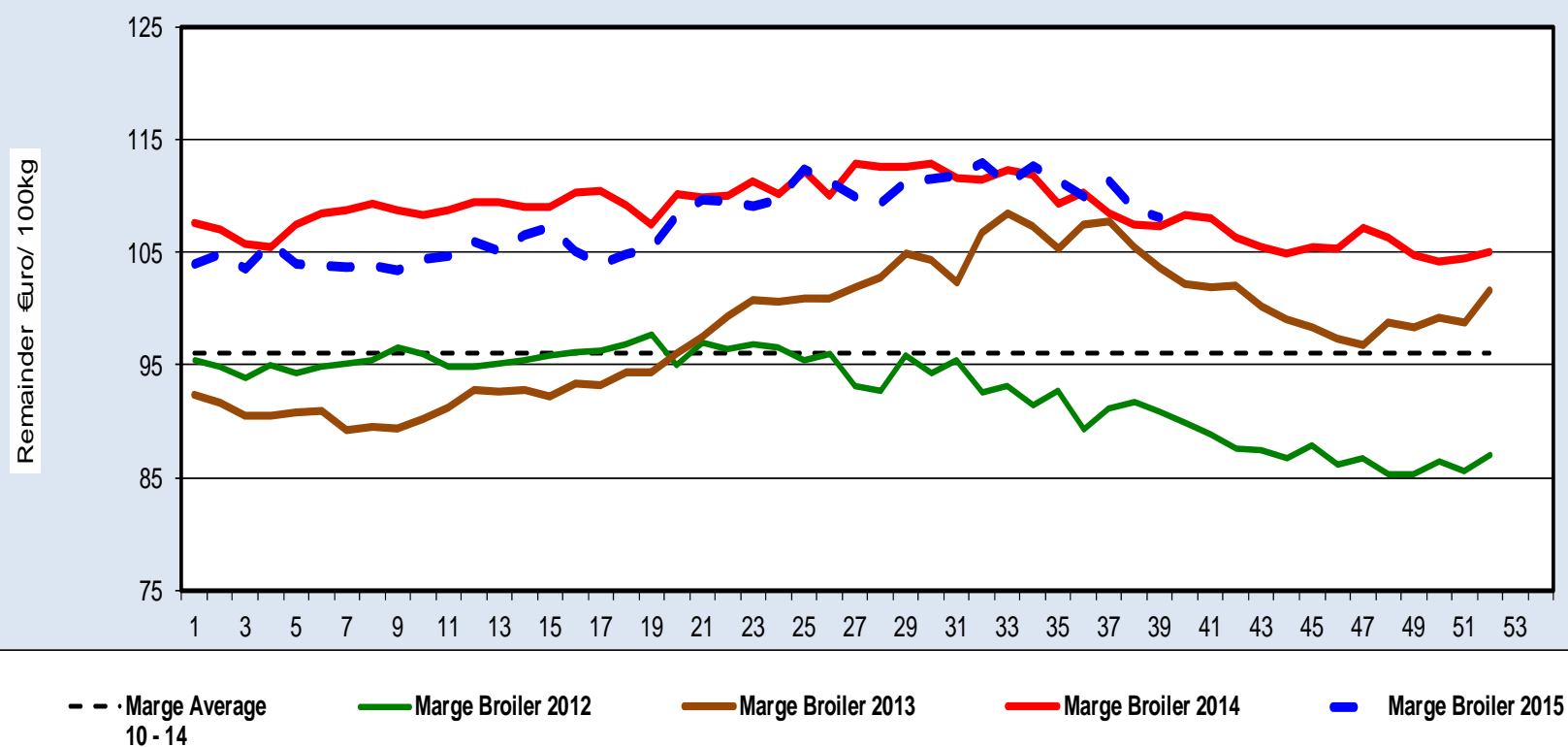


Price development of Compound feed for Broilers, a Broiler Cereal-Feedmix and Broiler price



NB. Comp. Feed 2014 =Forecast as from February 2015.
Cereal mix and Poultry = Forecast as from June 2015.

100KG Broiler minus feedcost for Broilers
feedconversionrate = 2,7 (2011) - 2,4 (2014)





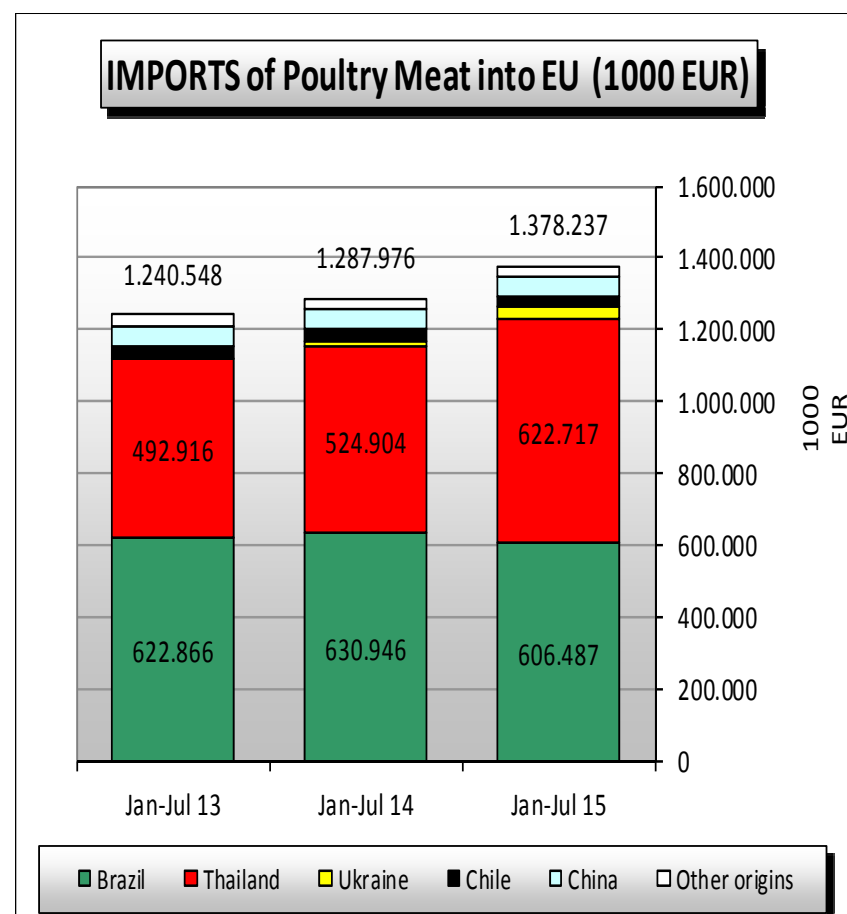
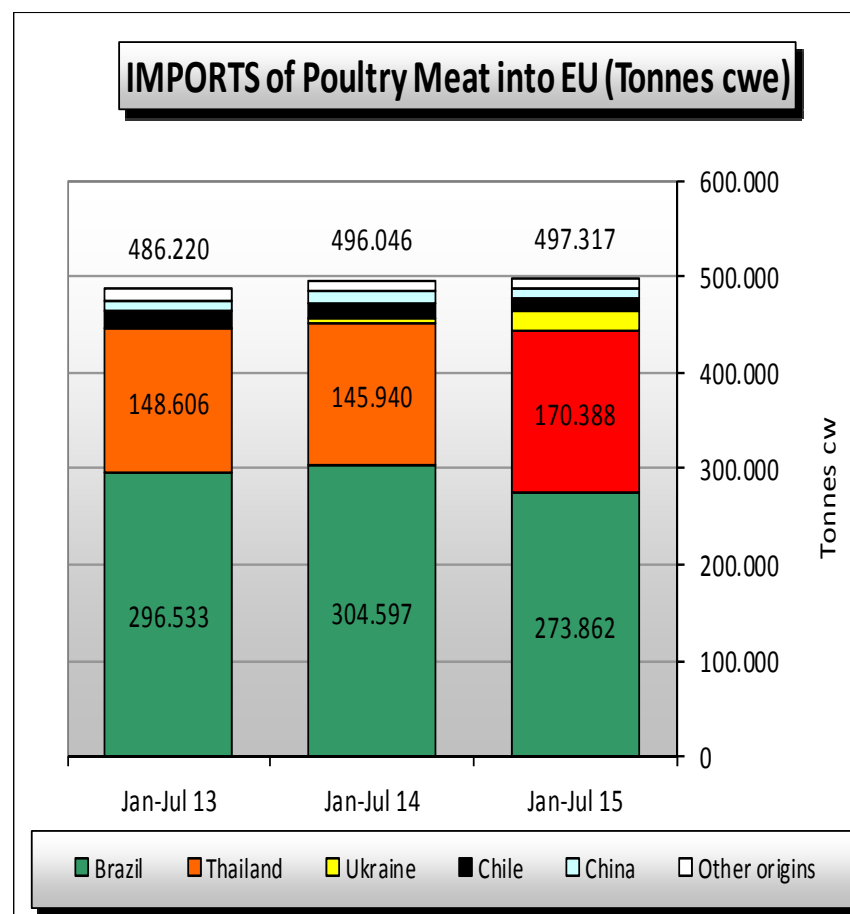
TRADE

*Agriculture
and Rural
Development*

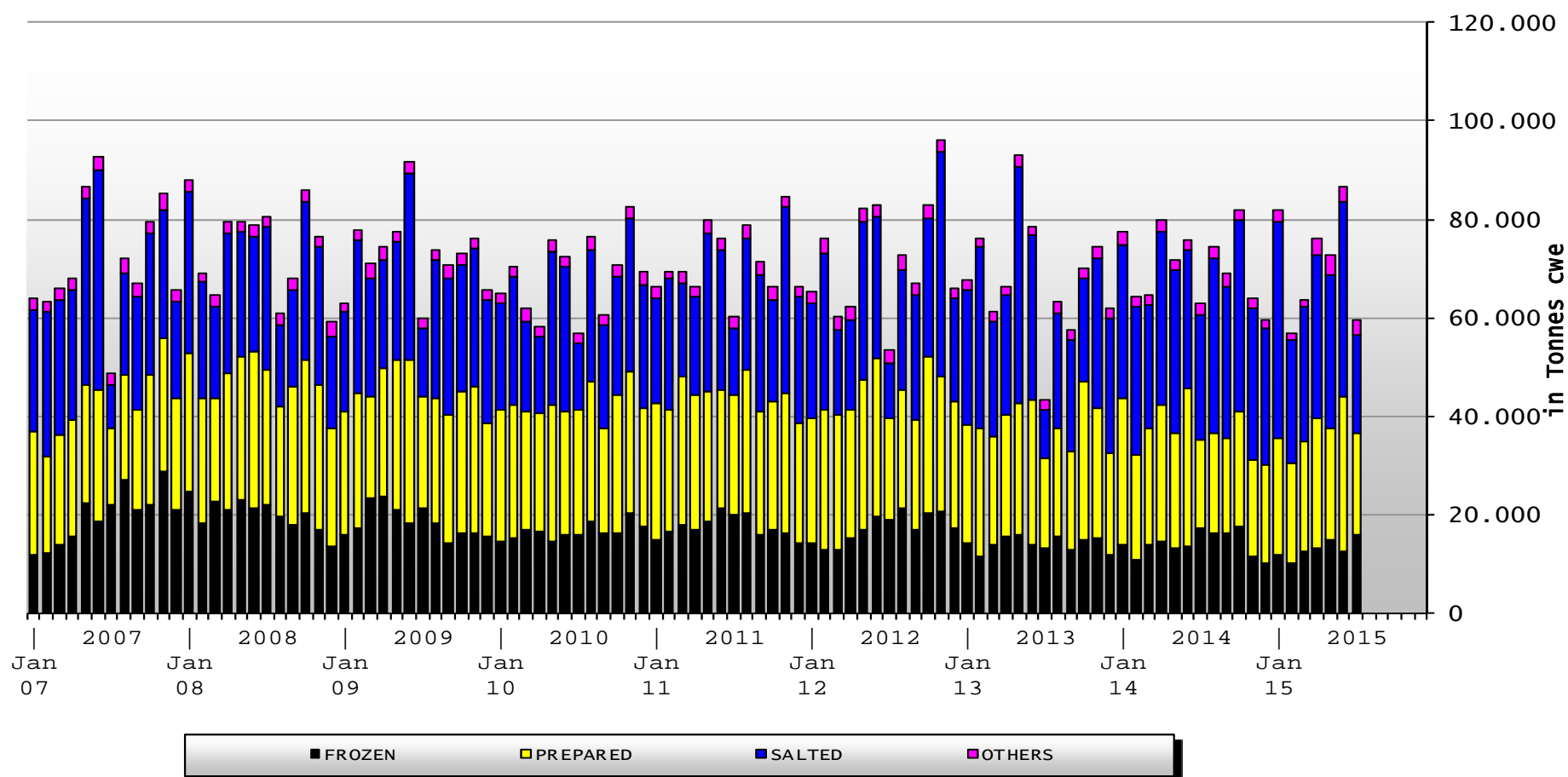
Imports of Poultry meat from selected origins

| | 2011 | | 2012 | | 2013 | | 2014 | | Jan-Jul 15 | Compared to Jan-Jul 14 |
|-------------|---------|-------|---------|-------|---------|-------|---------|-------|---------------|---------------------------|
| | tonnes | % | tonnes | % | tonnes | % | tonnes | % | tonnes % | |
| Brazil | 615.832 | 71,9% | 583.449 | 67,3% | 514.339 | 63,2% | 500.569 | 59,7% | 273.862 55,1% | - 10% |
| Thailand | 155.788 | 18,2% | 197.962 | 22,8% | 228.238 | 28,0% | 250.338 | 29,9% | 170.388 34,3% | + 17% |
| Ukraine | 31 | 0,0% | | | 276 | 0,0% | 19.928 | 2,4% | 20.972 4,2% | +++ |
| Chile | 44.433 | 5,2% | 42.192 | 4,9% | 30.515 | 3,7% | 25.801 | 3,1% | 11.572 2,3% | - 28% |
| China | 13.874 | 1,6% | 15.698 | 1,8% | 18.145 | 2,2% | 19.703 | 2,4% | 10.440 2,1% | - 14% |
| Argentina | 15.700 | 1,8% | 13.766 | 1,6% | 10.783 | 1,3% | 10.993 | 1,3% | 5.206 1,0% | - 15% |
| Switzerland | 1.253 | 0,1% | 3.817 | 0,4% | 3.817 | 0,5% | 4.234 | 0,5% | 1.523 0,3% | - 43% |
| USA | 129 | 0,0% | 352 | 0,0% | 193 | 0,0% | 43 | 0,0% | 861 0,2% | +++ |
| Others | 10.051 | 1,2% | 9.968 | 1,1% | 7.525 | 0,9% | 6.326 | 0,8% | 2.493 0,5% | |
| EXTRA EU 28 | 857.092 | | 867.203 | | 813.832 | | 837.935 | | 497.317 | |
| % change | | | + 1% | | - 6% | | + 3% | | + 0,3% | |

EU Poultry meat Imports



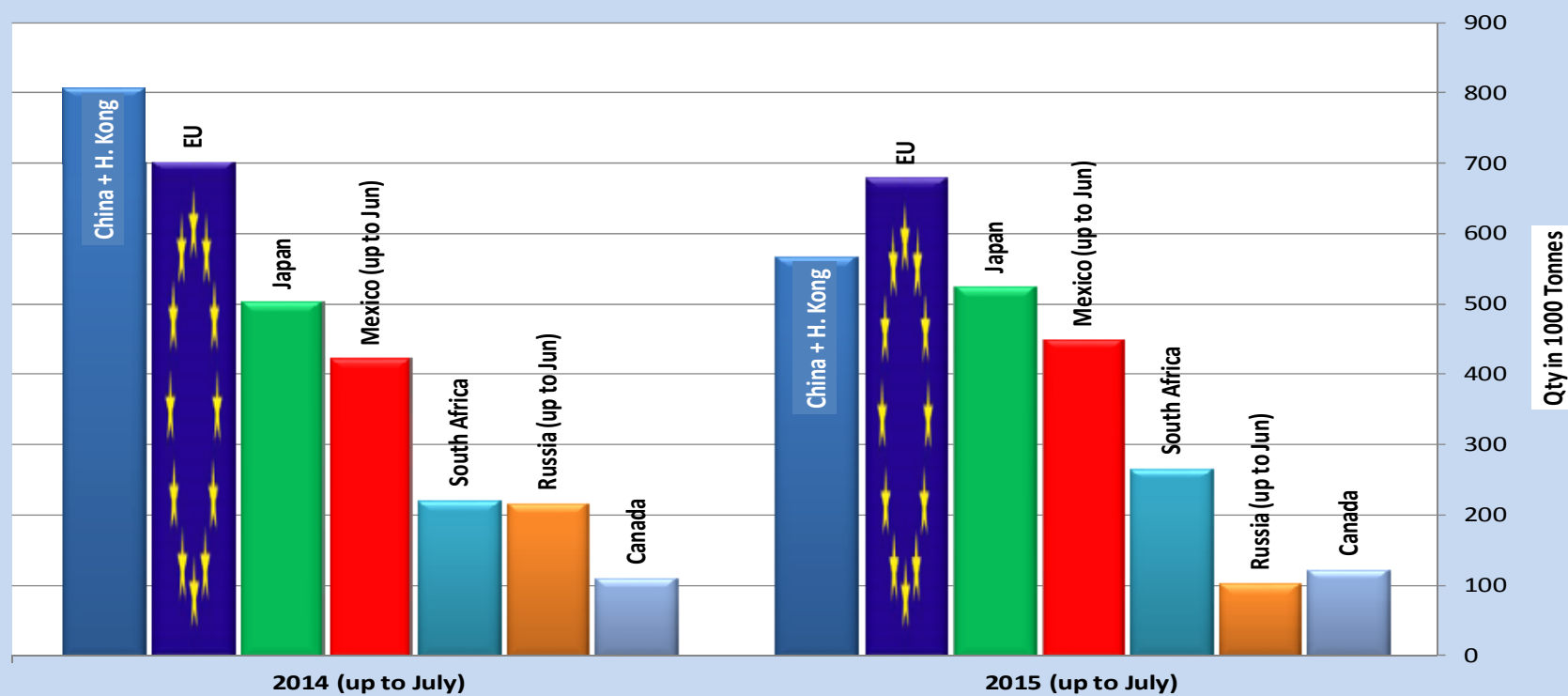
Imports of selected Poultry products



Main Importers of POULTRY Products (up to July)

Source : GTA & Eurostat

(excl.: live animals)



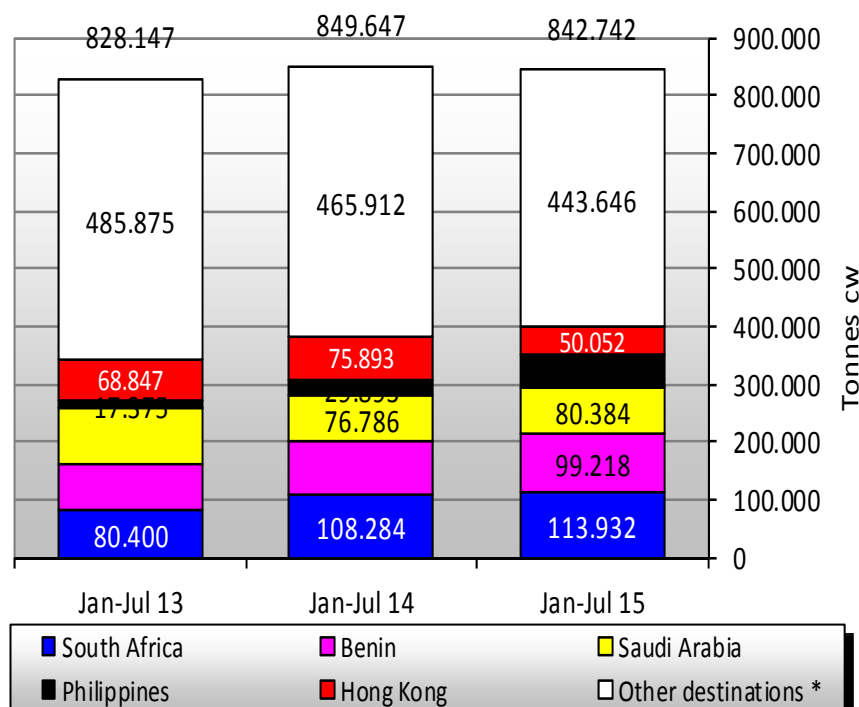


Exports of Poultry Meat to Selected Destinations

| | 2011 | | 2012 | | 2013 | | 2014 | | Jan-Jul 15 | | Compared to Jan-Jul 14 |
|--------------------|-----------|-------|-----------|-------|-----------|-------|-----------|-------|------------|-------|---------------------------|
| | tonnes | % | tonnes | % | tonnes | % | tonnes | % | tonnes | % | |
| South Africa | 94.083 | 6,7% | 131.832 | 9,2% | 158.510 | 11,1% | 203.414 | 13,5% | 113.932 | 13,5% | + 5% |
| Benin | 126.213 | 8,9% | 139.817 | 9,8% | 139.247 | 9,8% | 163.793 | 10,9% | 99.218 | 11,8% | + 7% |
| Saudi Arabia | 151.520 | 10,7% | 149.310 | 10,4% | 154.775 | 10,9% | 123.559 | 8,2% | 80.384 | 9,5% | + 5% |
| Philippines | 30.341 | 2,1% | 30.764 | 2,2% | 35.674 | 2,5% | 57.621 | 3,8% | 55.510 | 6,6% | + 86% |
| Hong Kong | 189.151 | 13,4% | 126.072 | 8,8% | 117.152 | 8,2% | 136.088 | 9,0% | 50.052 | 5,9% | - 34% |
| Ukraine | 81.687 | 5,8% | 103.427 | 7,2% | 75.966 | 5,3% | 80.208 | 5,3% | 41.365 | 4,9% | + 20% |
| Ghana | 68.978 | 4,9% | 69.156 | 4,8% | 75.216 | 5,3% | 56.883 | 3,8% | 40.522 | 4,8% | + 39% |
| Congo (Dem. Rep.) | 29.972 | 2,1% | 34.231 | 2,4% | 28.625 | 2,0% | 33.723 | 2,2% | 22.278 | 2,6% | + 18% |
| Gabon | 25.601 | 1,8% | 26.298 | 1,8% | 25.070 | 1,8% | 29.409 | 2,0% | 20.739 | 2,5% | + 27% |
| For.JRep.Mac | 24.790 | 1,8% | 32.747 | 2,3% | 36.530 | 2,6% | 33.552 | 2,2% | 19.216 | 2,3% | - 3% |
| Russia | 115.136 | 8,1% | 113.134 | 7,9% | 95.179 | 6,7% | 68.325 | 4,5% | 576 | 0,1% | - 99% |
| Other Destinations | 476.174 | 33,7% | 473.766 | 33,1% | 484.421 | 34,0% | 517.311 | 34,4% | 298.950 | 35,5% | |
| Extra-EU 28 | 1.413.647 | | 1.430.554 | | 1.426.365 | | 1.503.885 | | 842.742 | | |
| % change | | | + 1% | | - 0% | | + 5% | | - 0,8% | | |

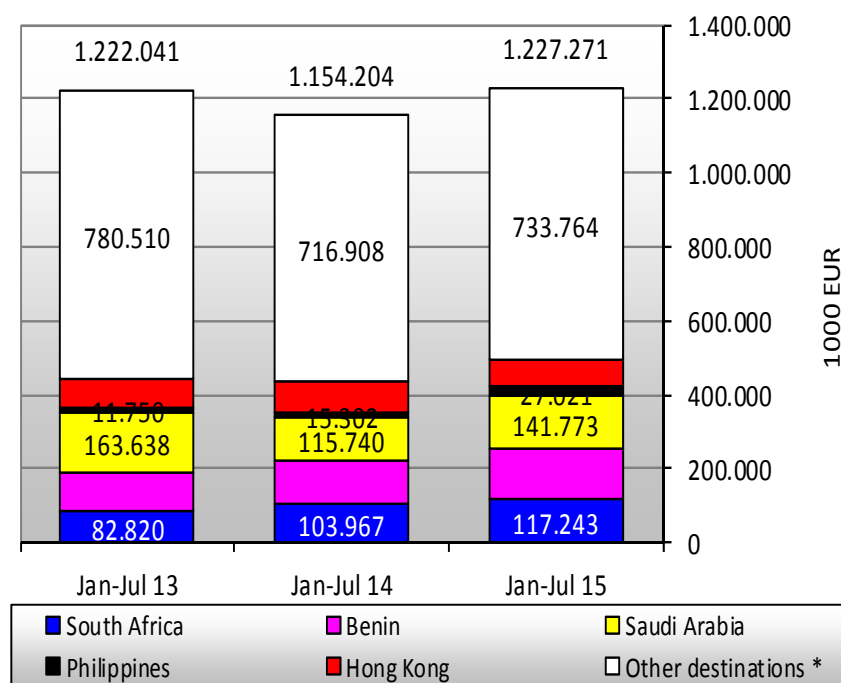
EU Poultry meat Export

EU EXPORTS of Poultry Meat (Tonnes cwe)



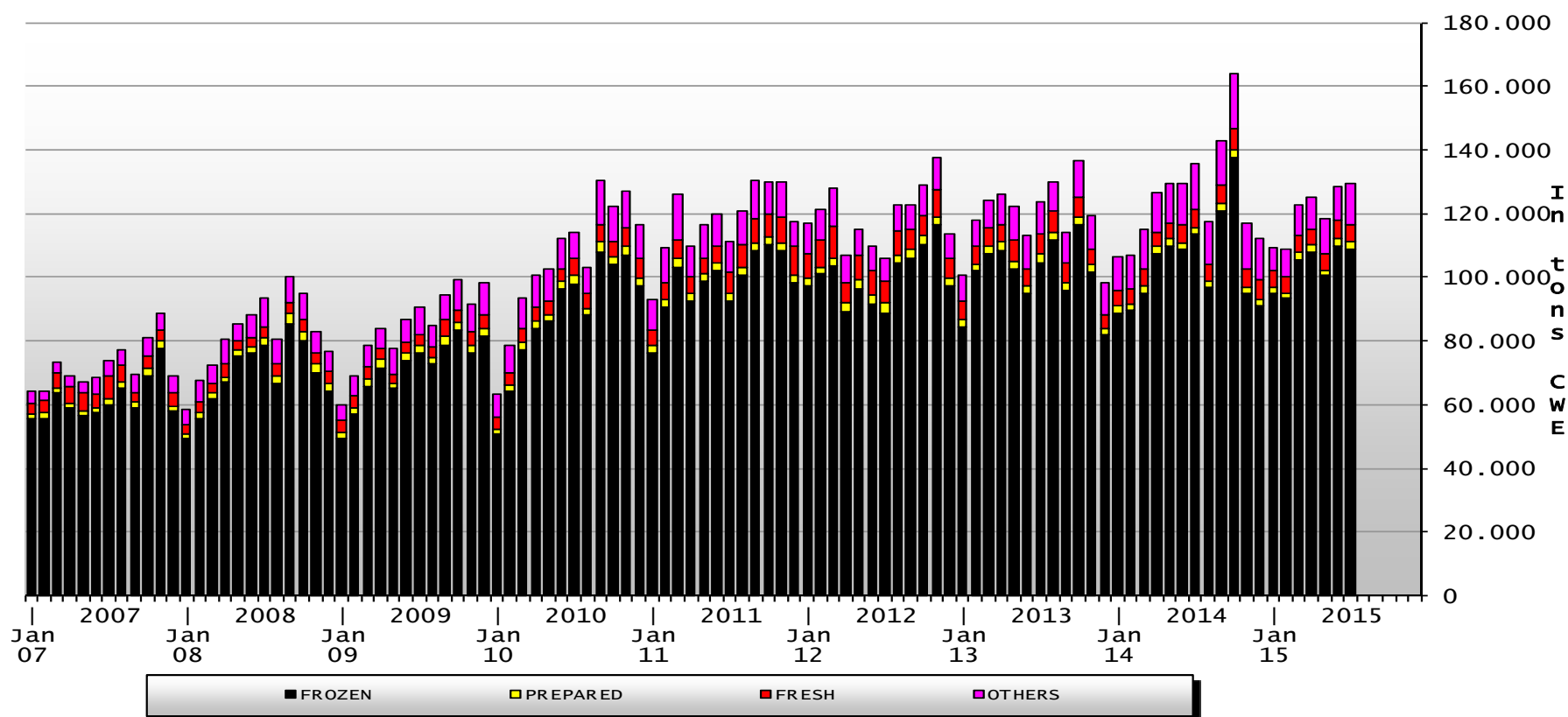
* countries trading less than 42 000 Tons

EU EXPORTS of Poultry Meat (1000 EUR)

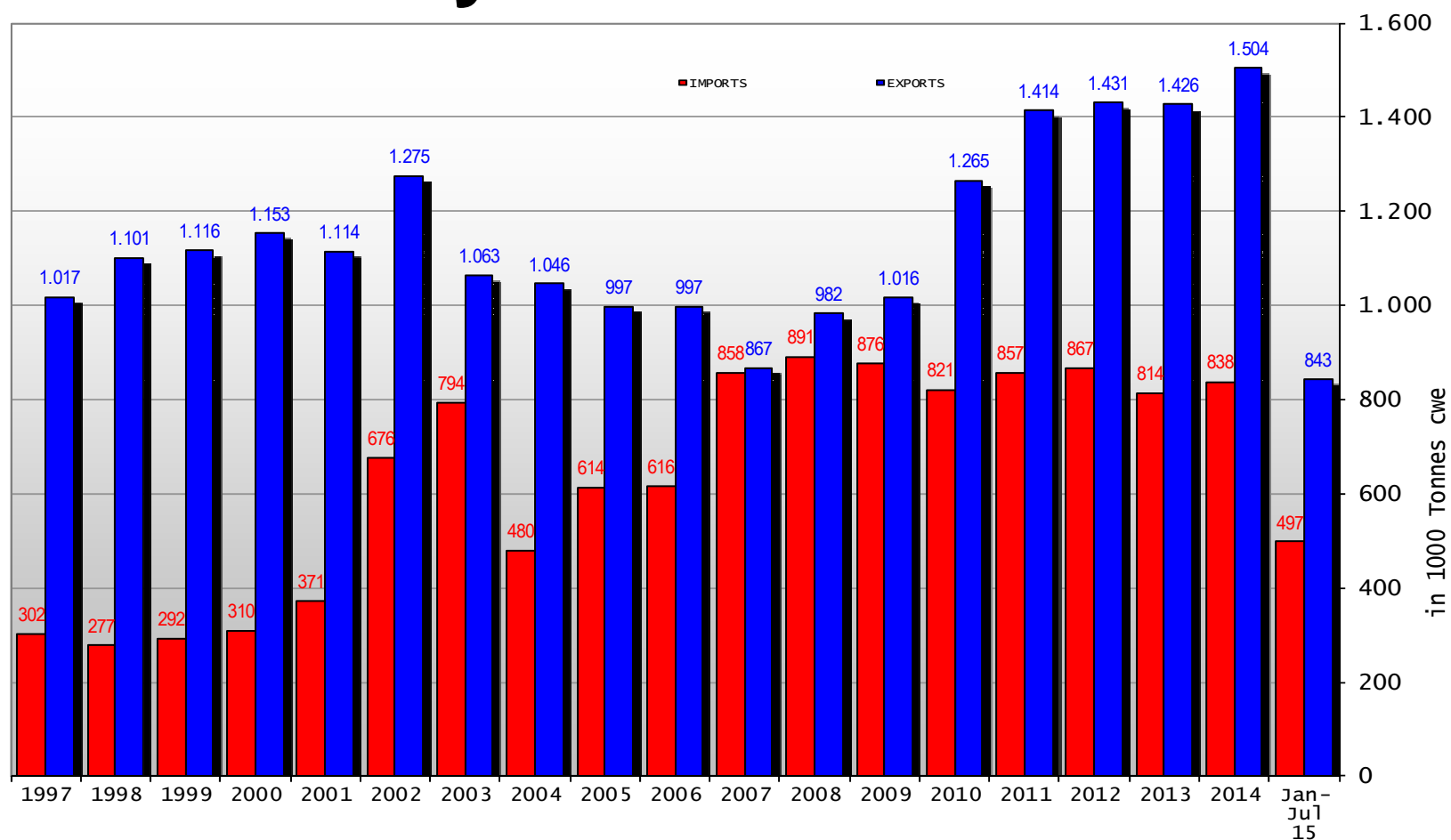


* countries trading less than 83 000 ('000 EUR)

Exports of selected Poultry products



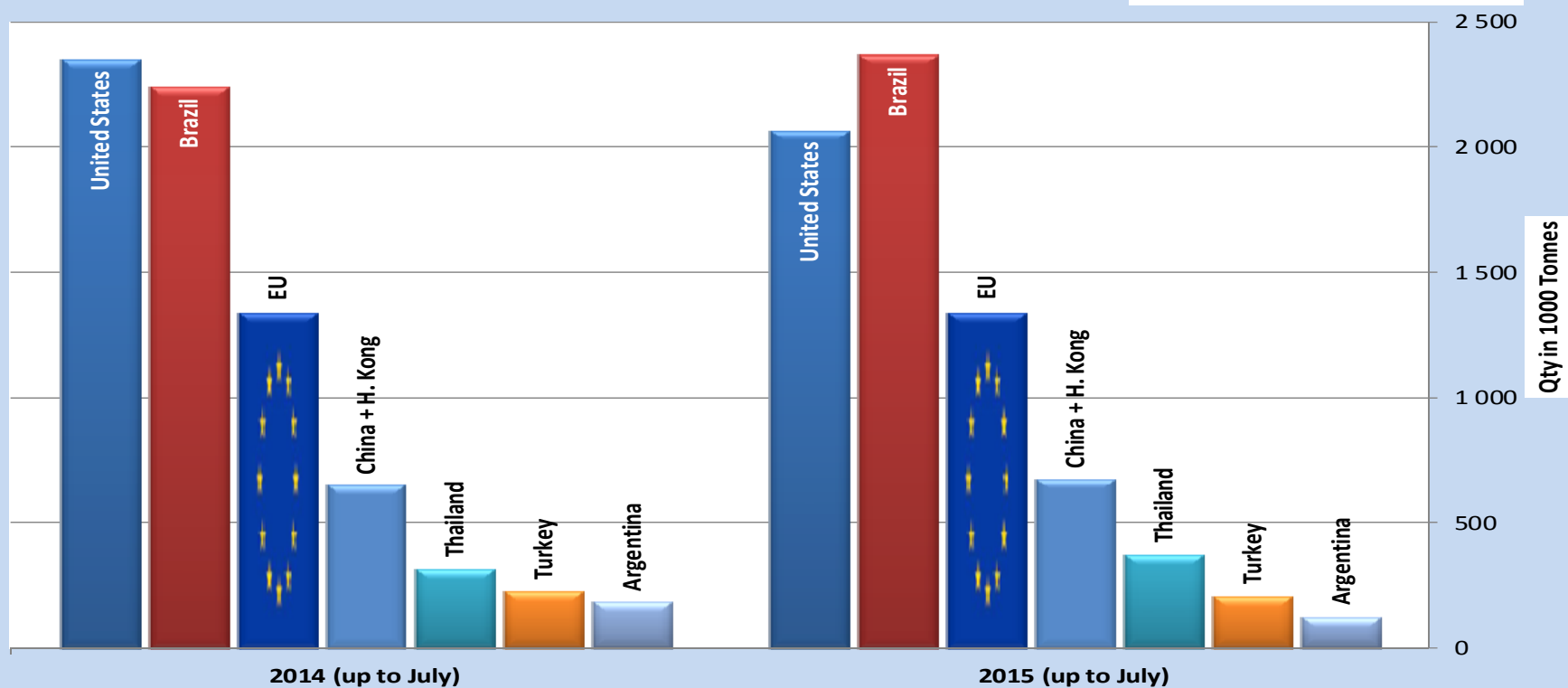
EU Poultry meat Trade Balance



Main Exporters of POULTRY Products (up to July)

Source : GTA & Eurostat

(excl. live animals)





Where to find data:

- http://ec.europa.eu/agriculture/markets/index_en.htm
- **Click on link: Poultry**
- **Click on link: Presentations and prices**
(righthand side under: in this chapter)
- **Choose the item (link) you want**