

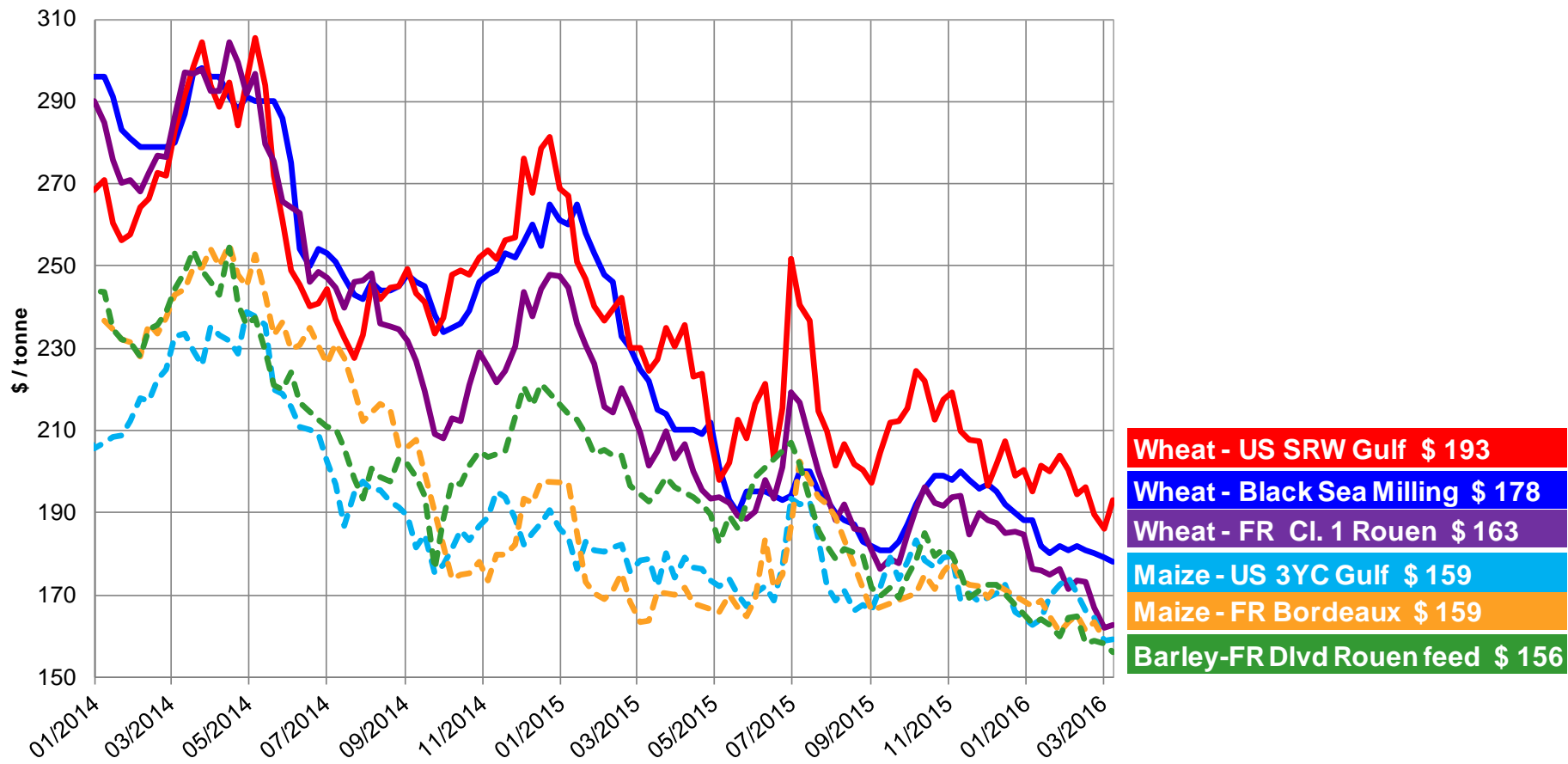


EU Market Situation for Eggs

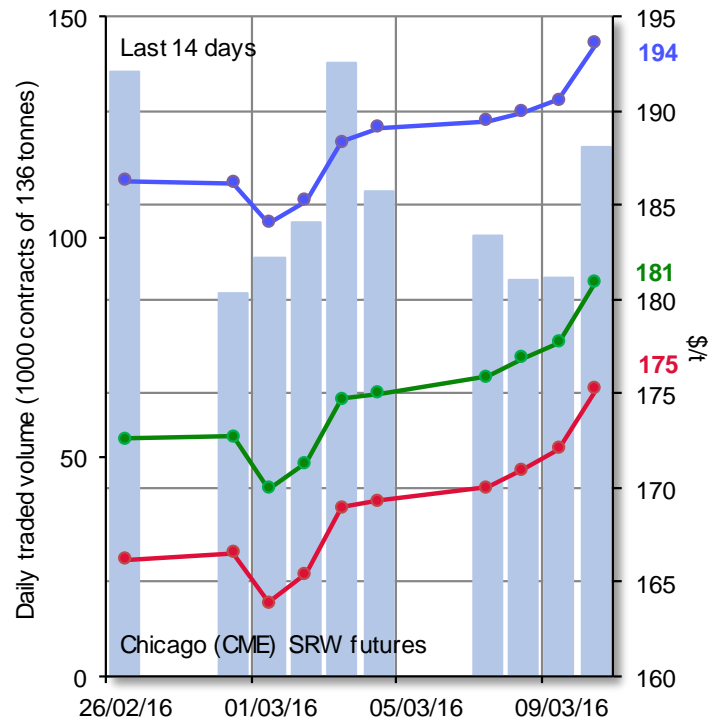
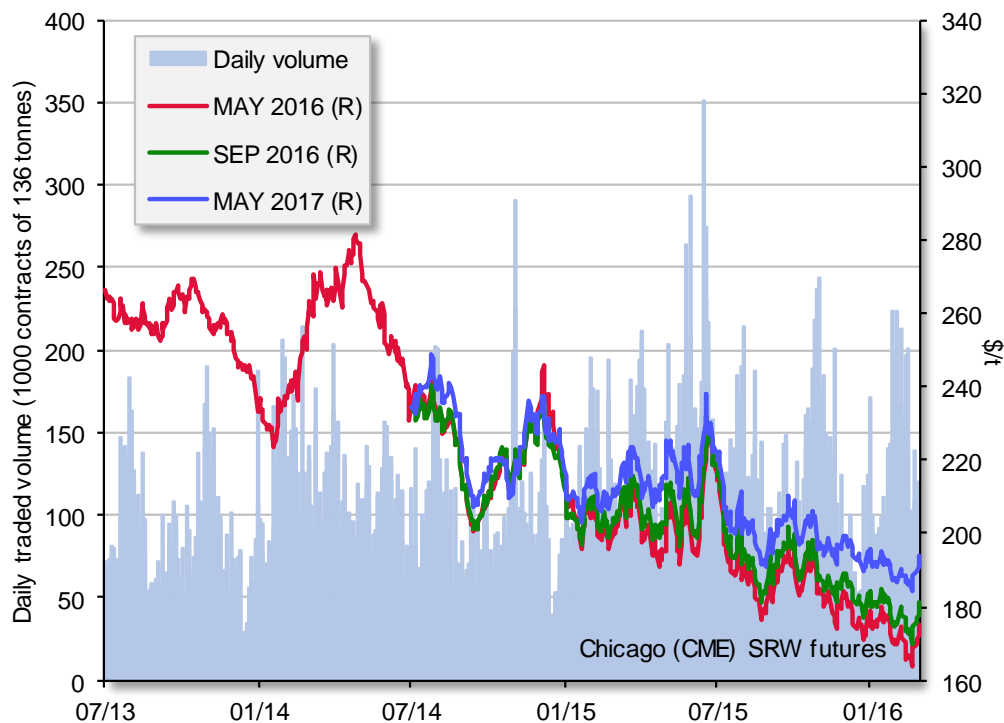
Civil Dialogue Group

16 March 2016

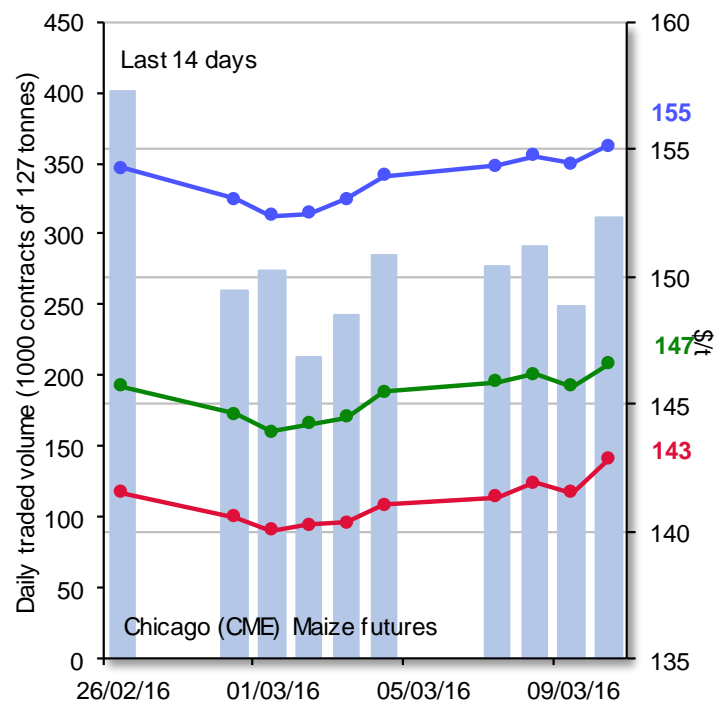
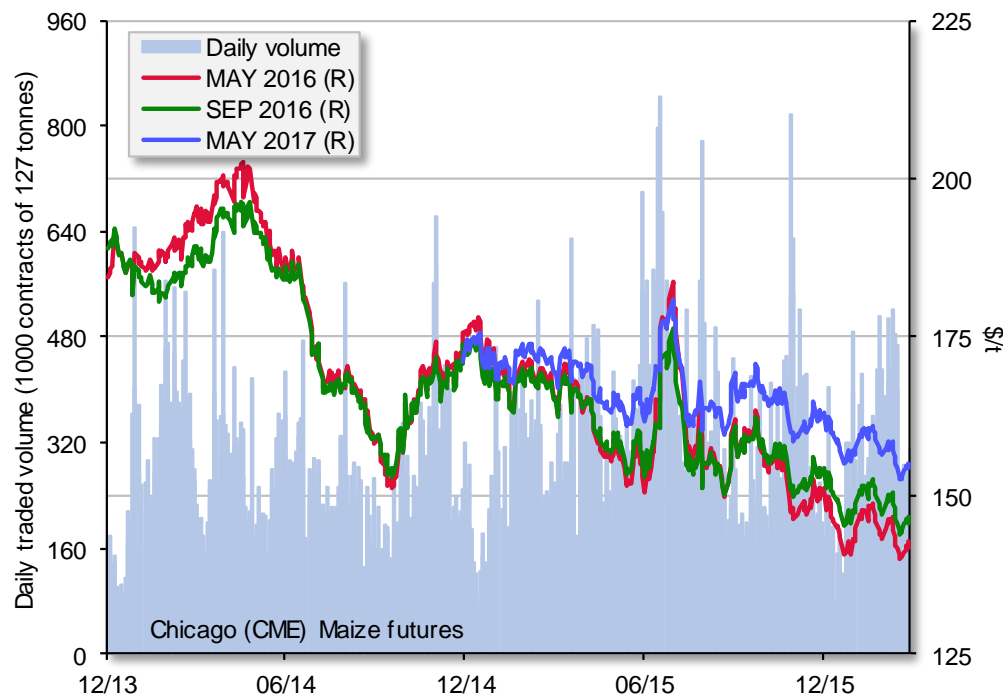
World cereal prices (\$/t)



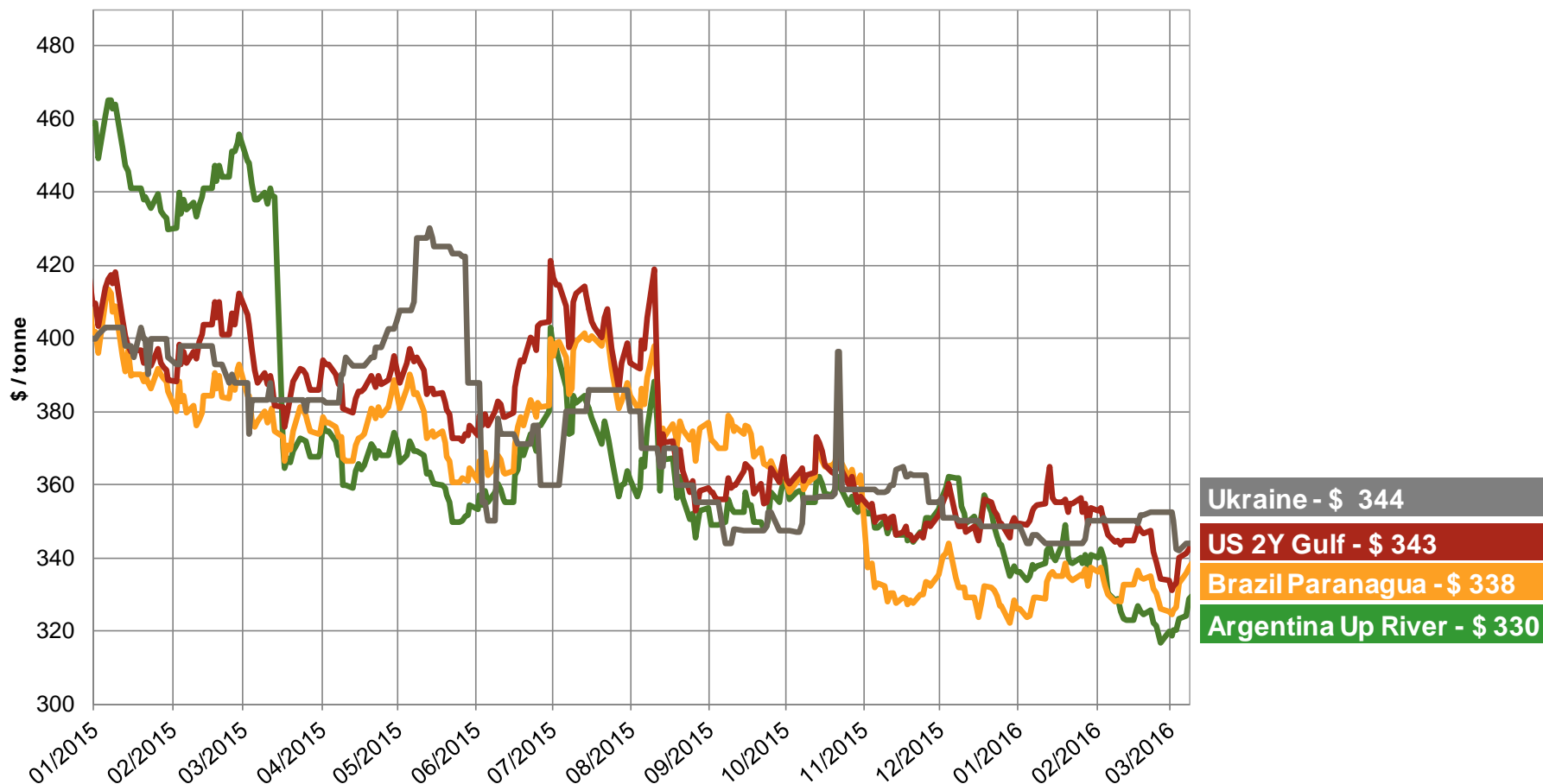
US CME SRW wheat futures



CME maize futures



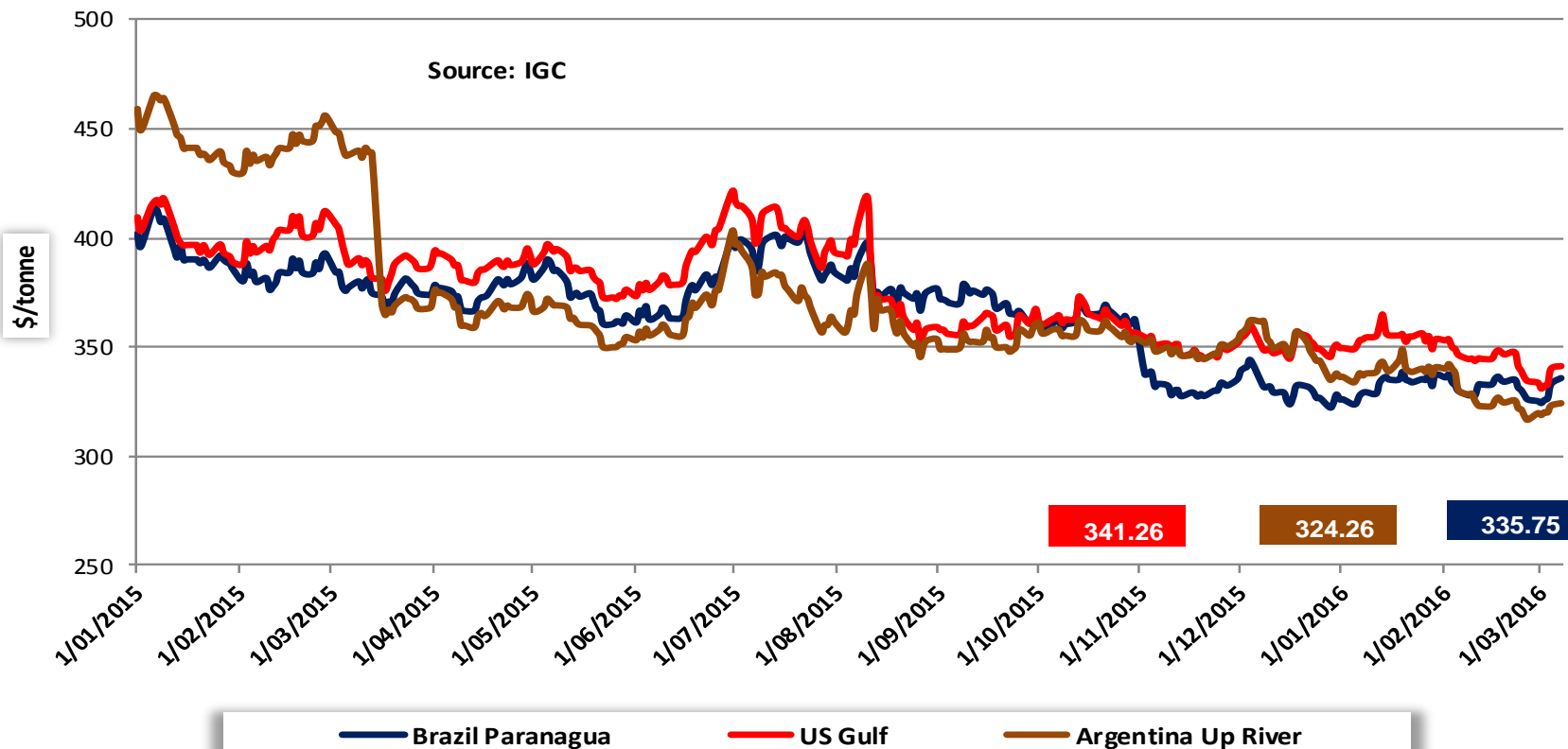
Soyabeans export prices \$/ton (fob)



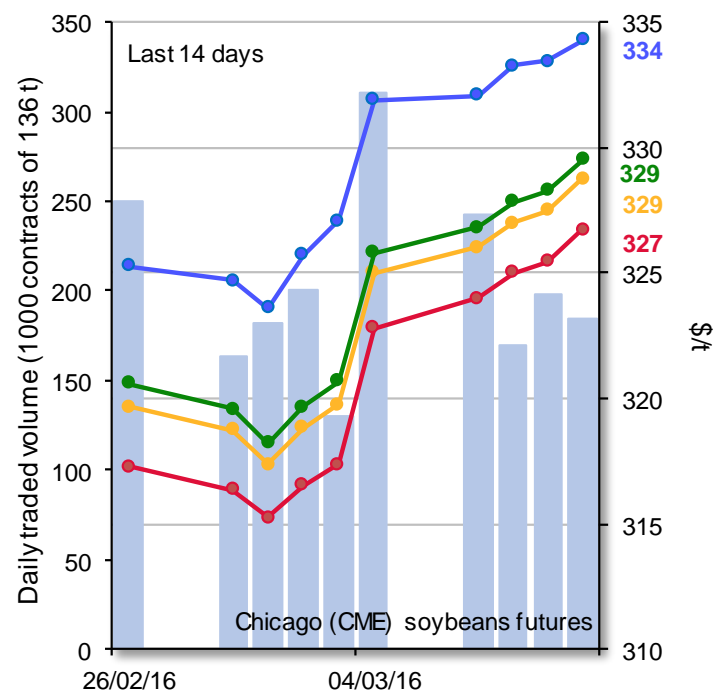
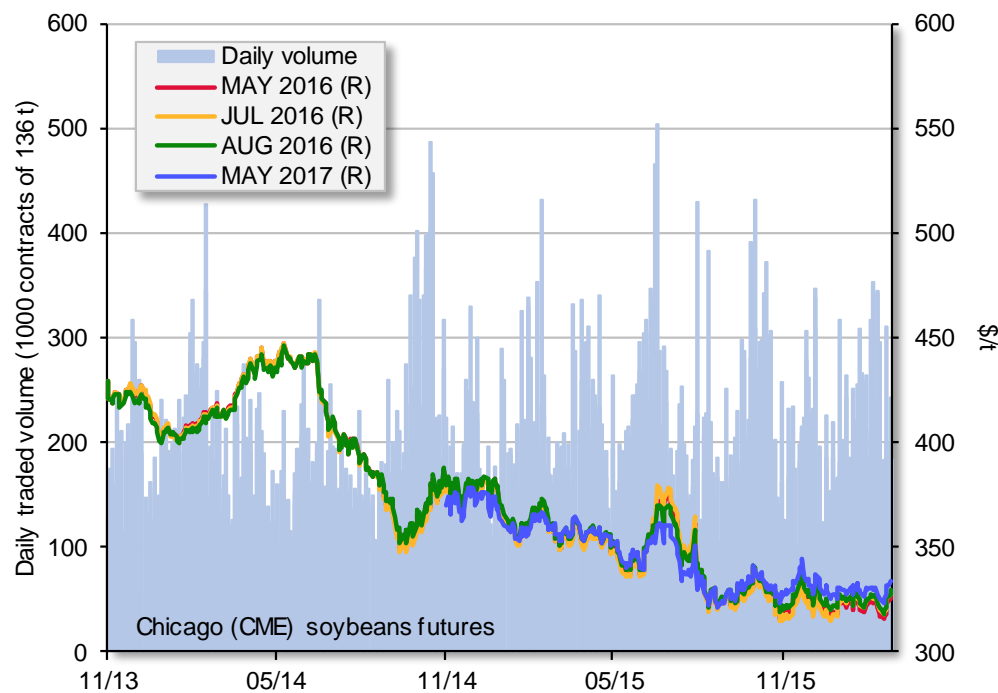
Soyameal world quotations

US\$/tonne

Source: IGC

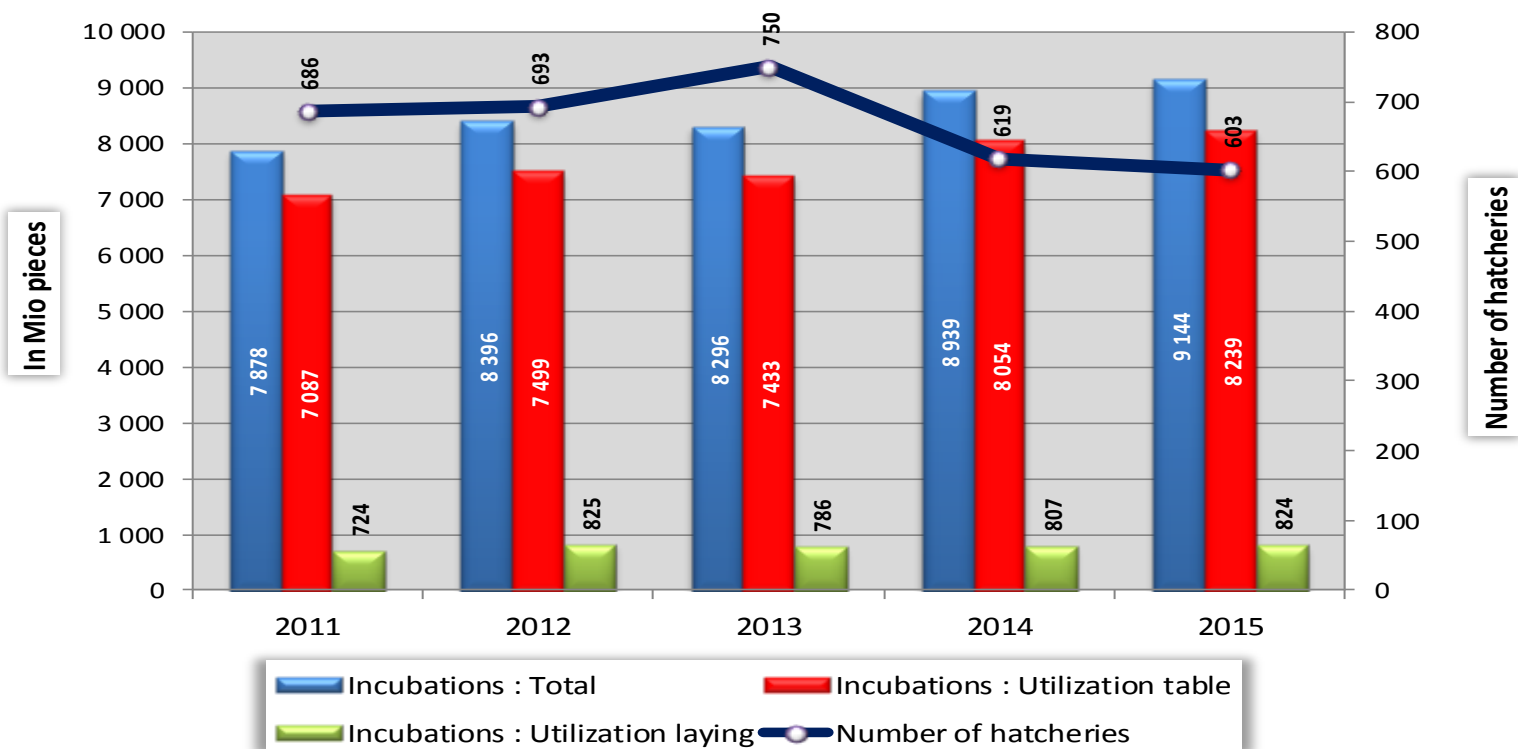


CME soya futures

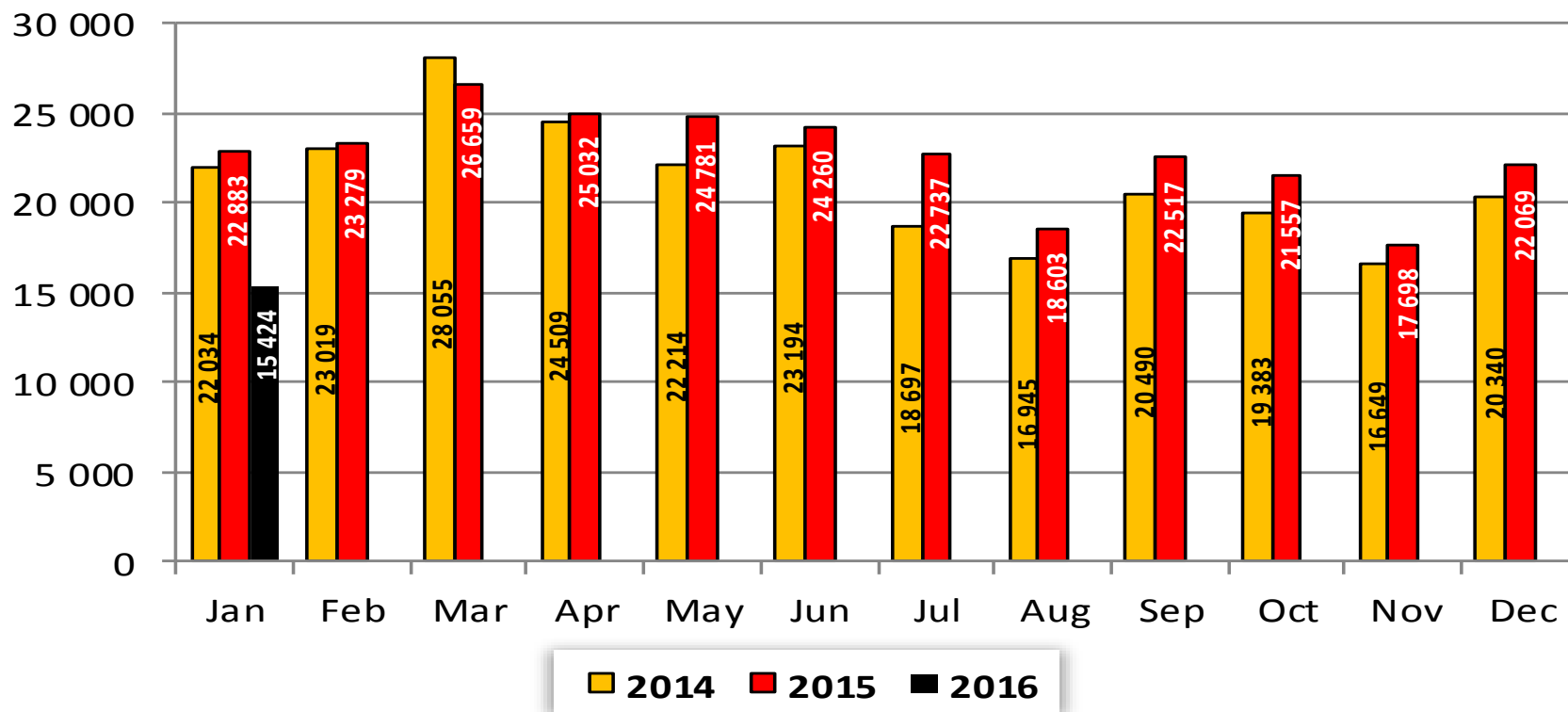


EU Capacity of and incubations by hatcheries

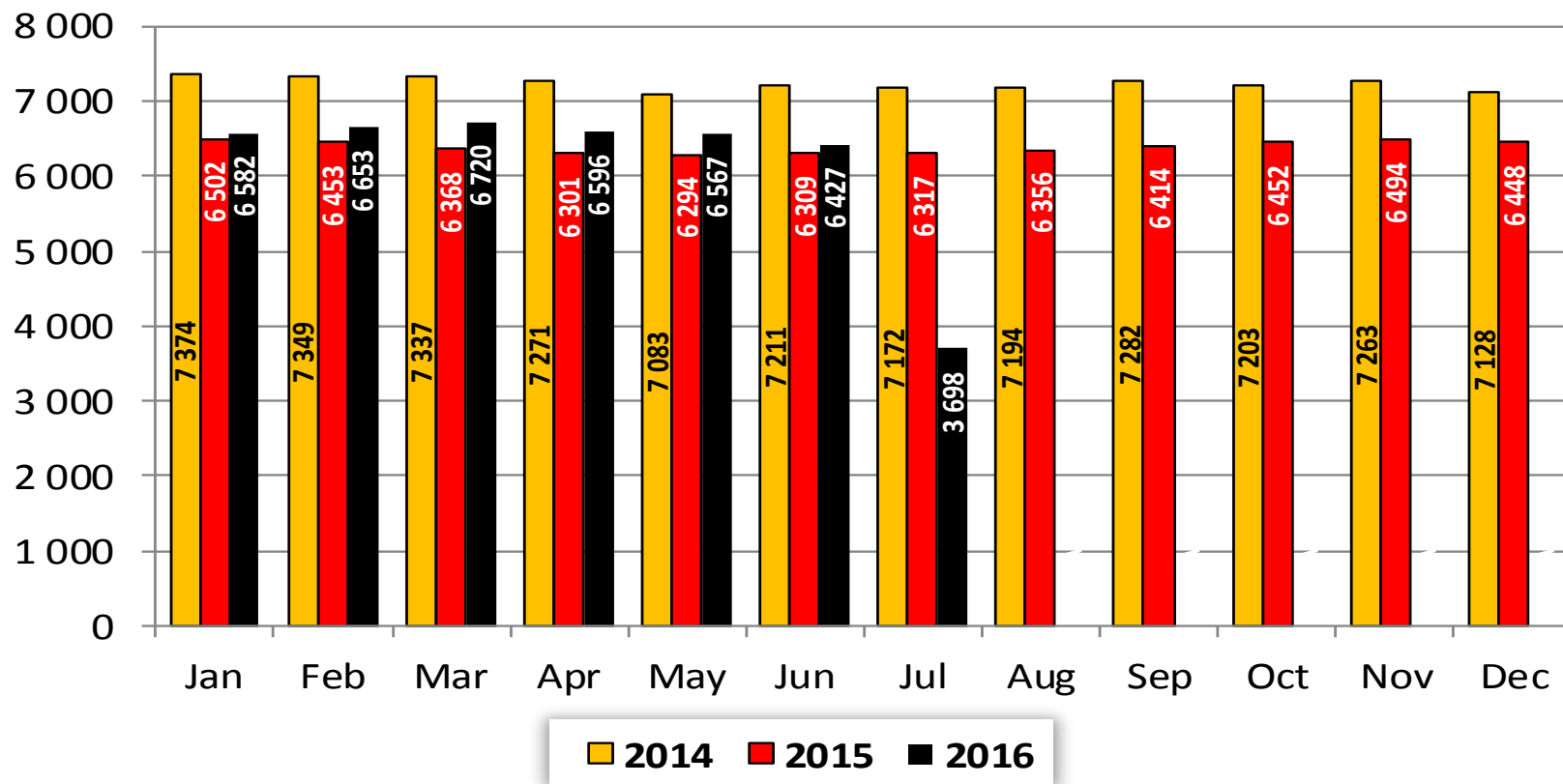
In 2015 - hatching of eggs for layers is 9% of the total
(2015 -> FR - IT - CY -NL -> same data as last year)



Placings of laying chicks (1 000 pieces)

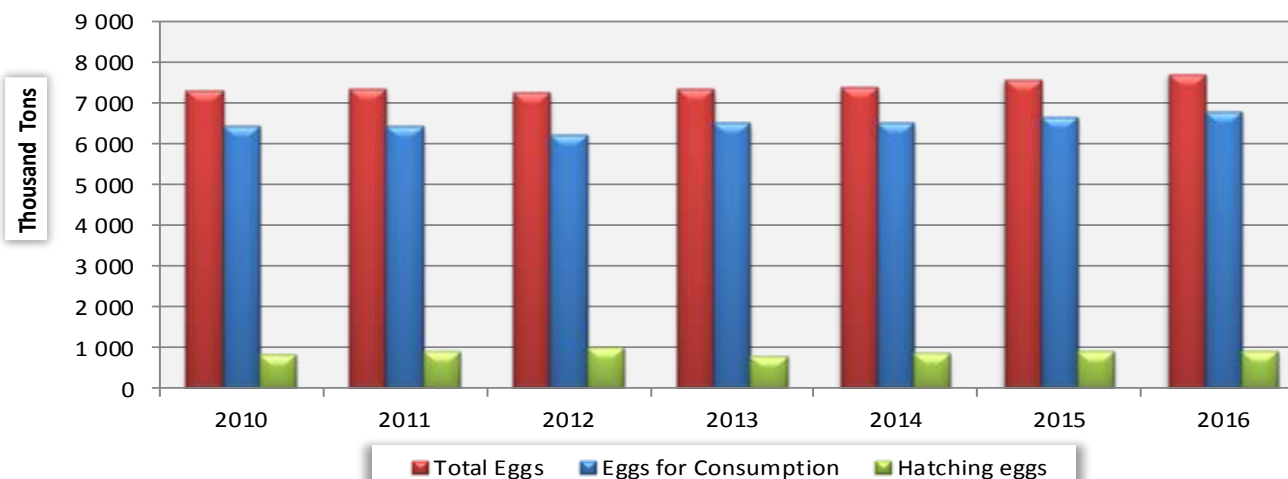


Forecast and Production of **eggs in shell** (Mio pieces)



Experts EU production forecast on Eggs

(Missing data (BE-AT-CY) No expert (BG-EE-LV-MT-SK))

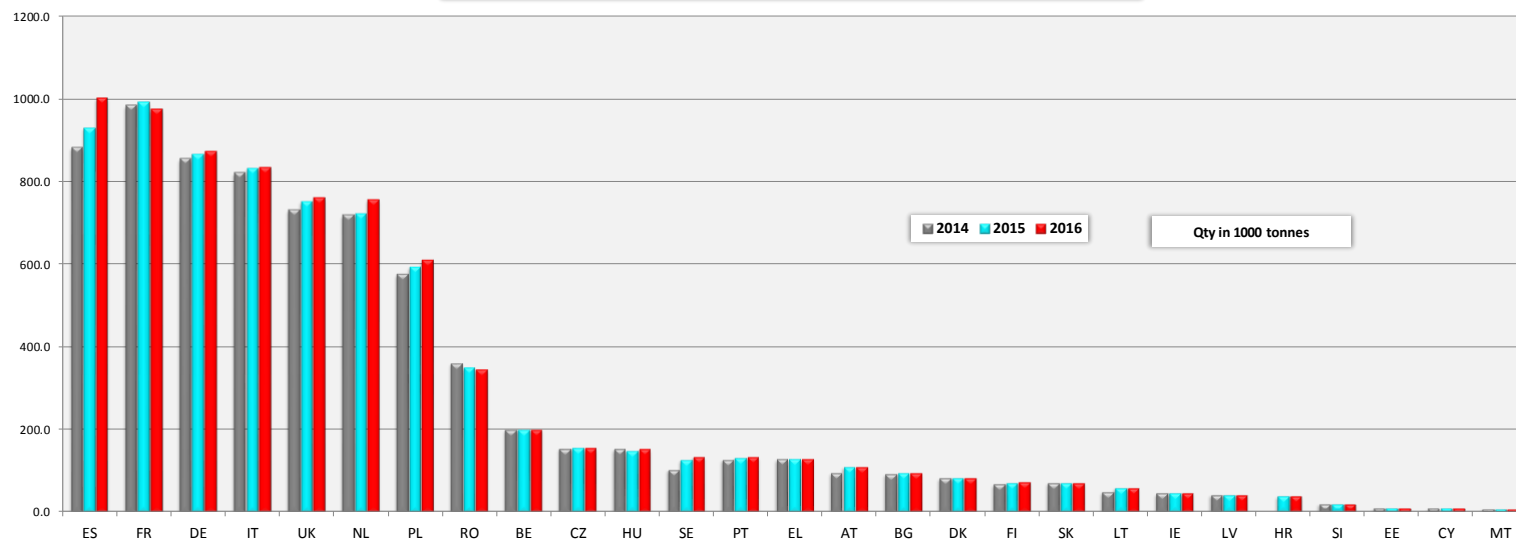


	2010	2011	2012	2013	2014	2015	2016	% 2015/2014	% 2016/2015
Total Eggs	7 297	7 333	7 256	7 341	7 375	7 578	7 713	+ 2.7%	+ 1.8%
Eggs for Consumption	6 462	6 433	6 240	6 509	6 509	6 670	6 797	+ 2.5%	+ 1.9%
Hatching eggs	835	900	1 016	812	867	908	916	+ 4.7%	+ 0.9%
% of hatching eggs on total eggs	11.4%	12.3%	14.0%	11.1%	11.8%	12.0%	11.9%		

Experts EU production forecast of Total Eggs

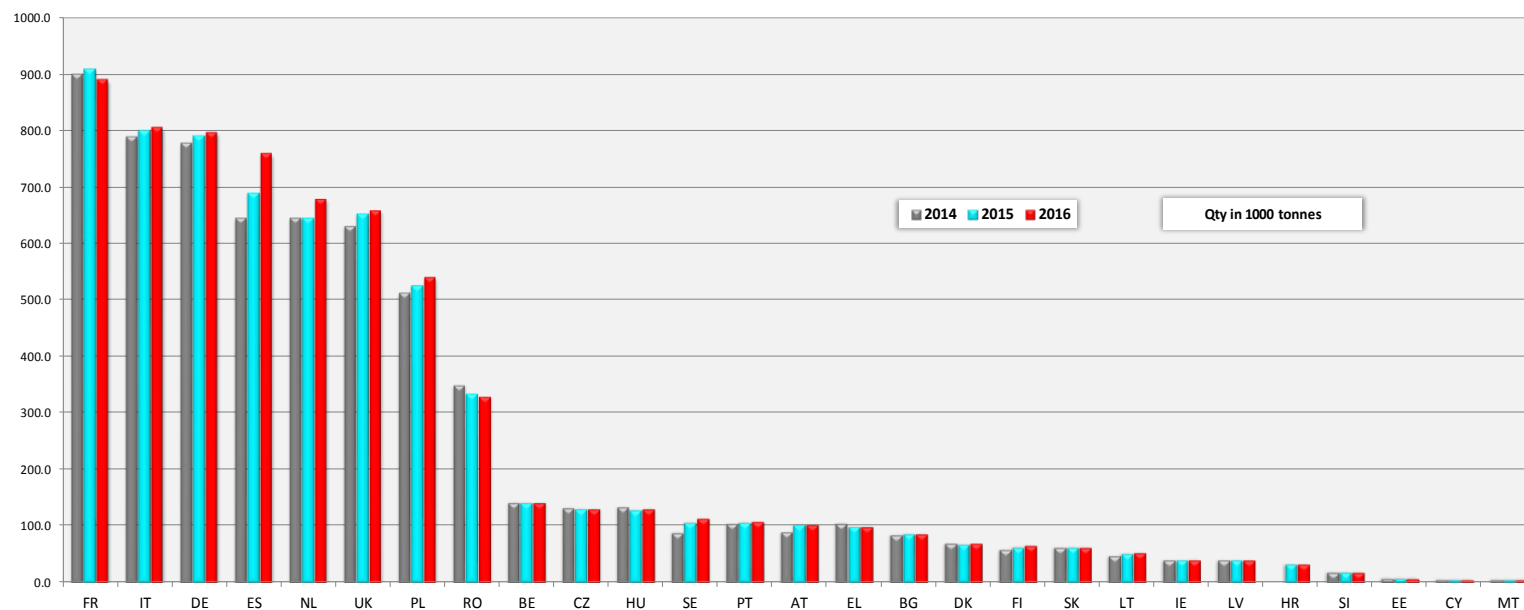
(Eggs in shell + Hatching Eggs)

(Thousands Pieces - 2015 = **121 248** & 2016 = **123 403**)



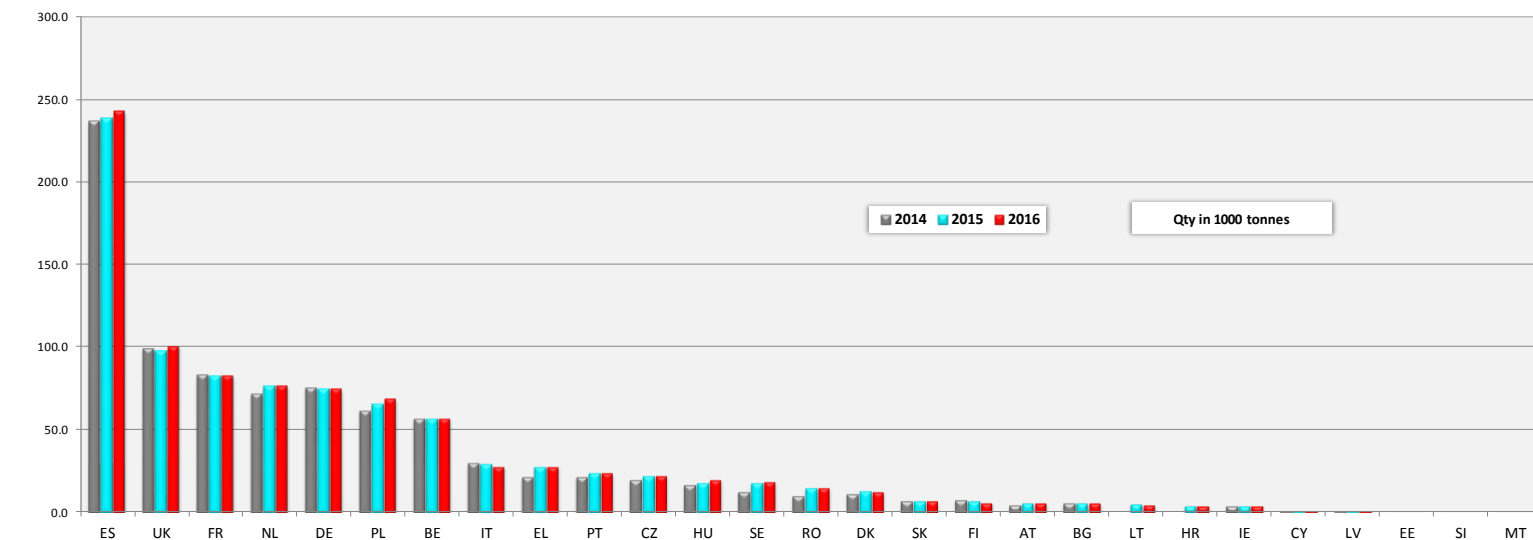
	ES	FR	DE	IT	UK	NL	PL	RO	BE	CZ	HU	SE	PT	EL	AT	BG	DK	FI	SK	LT	IE	LV	HR	SI	EE	CY	MT	EU
2015	928.9	991.0	865.0	830.0	751.2	722.0	593.0	350.0	200.0	154.3	148.2	126.0	132.0	128.0	110.0	94.0	82.0	71.4	71.0	58.6	45.0	42.2	38.5	20.4	9.8	8.4	7.1	7 578.0
15/14	+5.3%	+0.8%	+1.3%	+1.2%	+2.8%	+0.6%	+3.1%	-2.8%	+0.0%	+0.2%	-2.6%	+22.3%	+3.9%	+0.0%	+15.5%	+2.2%	+0.0%	+6.4%	+0.4%	+21.1%	+0.0%	+0.0%	+0.0%	+0.0%	+0.0%	+0.0%	+0.0%	+2.7%
2016	1 001.7	973.0	872.0	833.0	759.5	756.0	609.0	345.0	200.0	154.5	152.0	134.0	133.0	128.0	110.0	94.0	83.0	73.0	71.0	58.6	46.0	42.2	38.5	20.4	9.8	8.4	7.1	7 712.7
16/15	+7.8%	-1.8%	+0.8%	+0.4%	+1.1%	+4.7%	+2.7%	-1.4%	+0.0%	+0.1%	+2.6%	+6.3%	+0.8%	+0.0%	+0.0%	+0.0%	+1.2%	+2.2%	+0.0%	+0.0%	+2.2%	+0.0%	+0.0%	+0.0%	+0.0%	+0.0%	+0.0%	+1.8%

Experts EU production forecast of Eggs for consumption



	FR	IT	DE	ES	NL	UK	PL	RO	BE	CZ	HU	SE	PT	AT	EL	BG	DK	FI	SK	LT	IE	LV	HR	SI	EE	CY	MT	EU
2015	908.0	800.0	790.0	690.0	645.0	652.9	527.0	335.0	143.0	132.0	130.0	108.0	108.0	104.0	100.0	88.0	68.9	64.2	63.9	53.0	41.0	41.1	34.1	20.0	9.2	7.1	6.9	6 670.3
15/14	+1.0%	+1.3%	+1.5%	+7.0%	-0.2%	+3.4%	+2.7%	-4.3%	+0.0%	-1.5%	-3.7%	+20.0%	+2.9%	+15.2%	-5.7%	+2.3%	-2.1%	+8.4%	+0.3%	+9.5%	+0.0%	+0.0%		+0.0%	+0.0%	+0.0%	+0.0%	+2.5%
2016	890.0	805.0	797.0	759.0	679.0	658.6	540.0	330.0	143.0	132.0	132.0	115.0	109.0	104.0	100.0	88.0	70.0	66.7	63.9	54.0	42.0	41.1	34.1	20.0	9.2	7.1	6.9	6 796.6
16/15	-2.0%	+0.6%	+0.9%	+10.0%	+5.3%	+0.9%	+2.5%	-1.5%	+0.0%	+0.0%	+1.5%	+6.5%	+0.9%	+0.0%	+0.0%	+0.0%	+1.6%	+3.9%	+0.0%	+1.9%	+2.4%	+0.0%	+0.0%	+0.0%	+0.0%	+0.0%	+0.0%	+1.9%

Experts EU production forecast of Hatching Eggs (Thousands Pieces - 2015 = 14 523 & 2016 = 14 658)

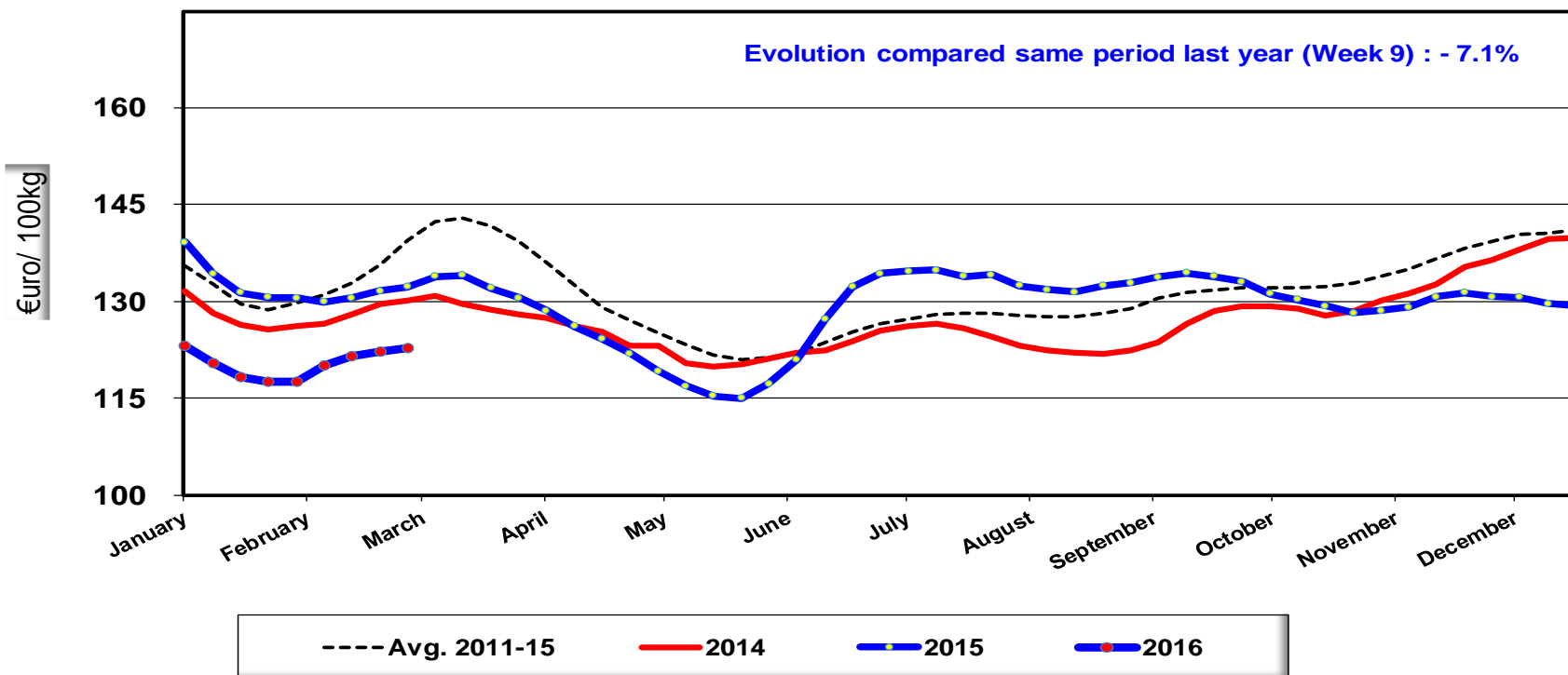


	ES	UK	FR	NL	DE	PL	BE	IT	EL	PT	CZ	HU	SE	RO	DK	SK	FI	AT	BG	LT	HR	IE	CY	LV	EE	SI	MT	EU
2015	238.9	98.3	83.0	77.0	75.0	66.0	57.0	28.0	28.0	24.0	22.3	18.2	18.0	15.0	13.1	7.1	7.2	6.0	6.0	5.6	4.4	4.0	1.3	1.1	0.6	0.4	0.2	907.7
15/14	+0.8%	-1.0%	-1.2%	+6.9%	-1.3%	+6.5%	+0.0%	+9.1%	+27.3%	+9.1%	+11.5%	+5.8%	+38.5%	+50.0%	+12.9%	+1.4%	-8.9%	+22.4%	+0.0%			+0.0%	+0.0%	+0.0%	+0.0%	+0.0%	+0.0%	+4.7%
2016	242.7	100.9	83.0	77.0	75.0	69.0	57.0	22.5	28.0	24.0	22.5	20.0	19.0	15.0	13.0	7.1	6.3	6.0	6.0	4.6	4.4	4.0	1.3	1.1	0.6	0.4	0.2	916.1
16/15	+1.6%	+2.6%	+0.0%	+0.0%	+0.0%	+4.5%	+0.0%	+9.9%	+0.0%	+0.0%	+0.9%	+9.9%	+5.6%	+0.0%	-0.8%	+0.0%	-12.5%	+0.0%	+0.0%	-17.9%	+0.0%	+0.0%	+0.0%	+0.0%	+0.0%	+0.0%	+0.0%	+0.9%

Evolution of the weekly EU average price for **Class A eggs** in packing stations

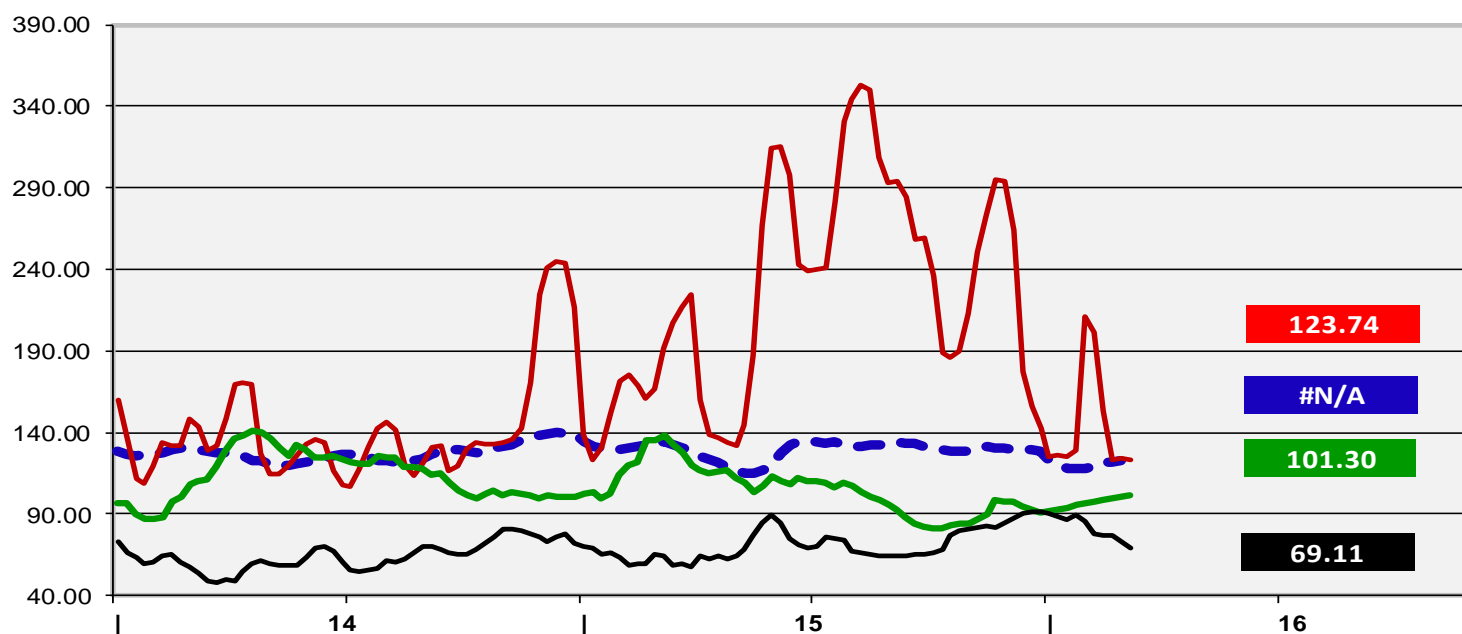
Latest price (Week 9) : 122.84 EUR/100 kg

Evolution compared same period last year (Week 9) : - 7.1%



Source: MSs notifications (Regulation (EC) 546/2003)

Egg prices of EU, USA, Brazil and India in €/100kg



Sources:

EU = weighted average of MS prices - Average class L&M

US = weekly USDA prices - Eggs grade A, Chicago

BR = average of prices in main producing states - (noticiasagricolas.com.br)

IN = average of NECC prices in available Production Centres - (e2necc.com)

- - - EU egg Euro
 - - - US egg Euro
 - - - BR Egg Euro
 - - - IN NECC Euro

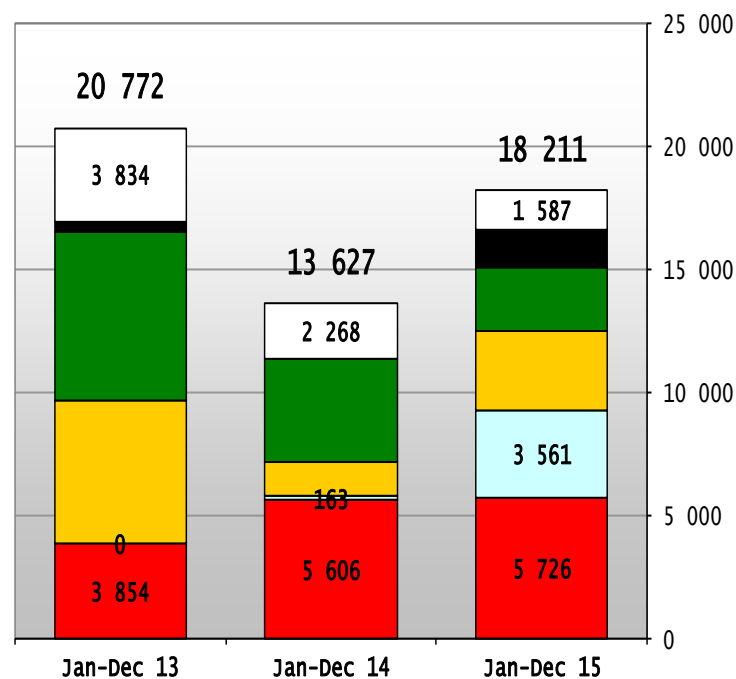
EU Imports of Eggs:

Trade Figures (*Comext – tonnes egg equiv.*) not incl. Hatching eggs

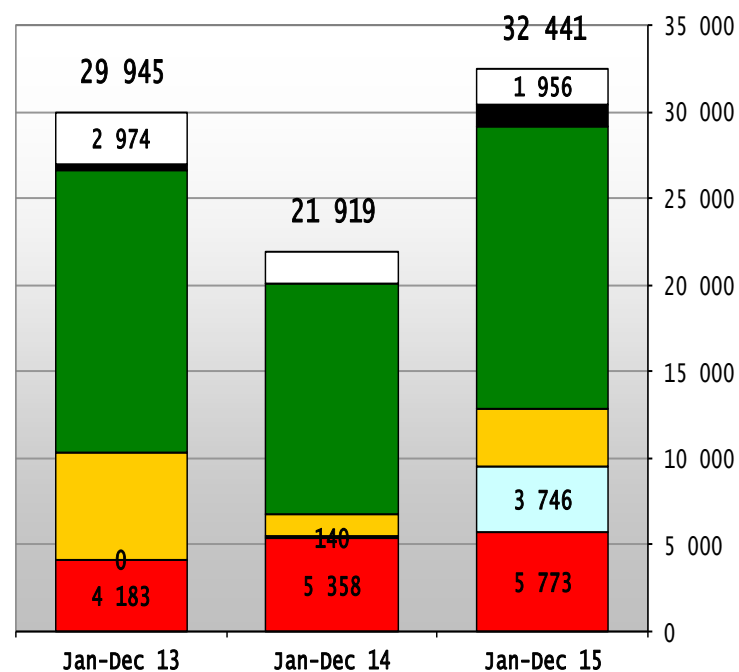
	2011		2012		2013		2014		Jan-Dec 15	Compared to Jan-Dec 14	
	tonnes	%	tonnes	%	tonnes	%	tonnes	%	tonnes		%
India	1 554	7.5%	3 658	9.7%	3 855	18.7%	5 606	42.3%	5 726	31.4%	+ 2.2%
Ukraine	0	0.0%	0	0.0%	0	0.0%	163	1.2%	3 561	19.6%	+++
Argentina	8 113	39.0%	10 159	26.9%	5 835	28.4%	1 433	10.8%	3 232	17.7%	+ 125%
USA	5 956	28.6%	15 179	40.2%	6 861	33.4%	3 930	29.7%	2 550	14.0%	- 39%
Albania	1 303	6.3%	2 321	6.2%	387	1.9%	0	0.0%	1 554	8.5%	+++
Switzerland	343	1.6%	333	0.9%	355	1.7%	610	4.6%	583	3.2%	- 19%
Others	3 533	0.2%	6 073	0.0%	3 269	0.0%	1 498	0.0%	1 004	5.5%	
EXTRA EU 28	20 801		37 722		20 563		13 240		18 211		
% change			+ 81%		- 45%		- 36%		+ 33.6%		

EU Egg Imports

**Total EU Import of Eggs - not incl. Hatching eggs
(Tonnes eggs equiv)**



**Total EU Import of Eggs - not incl. Hatching eggs
(1000 EUR)**



■ India ■ Ukraine ■ Argentina ■ USA ■ Albania ■ Other destinations

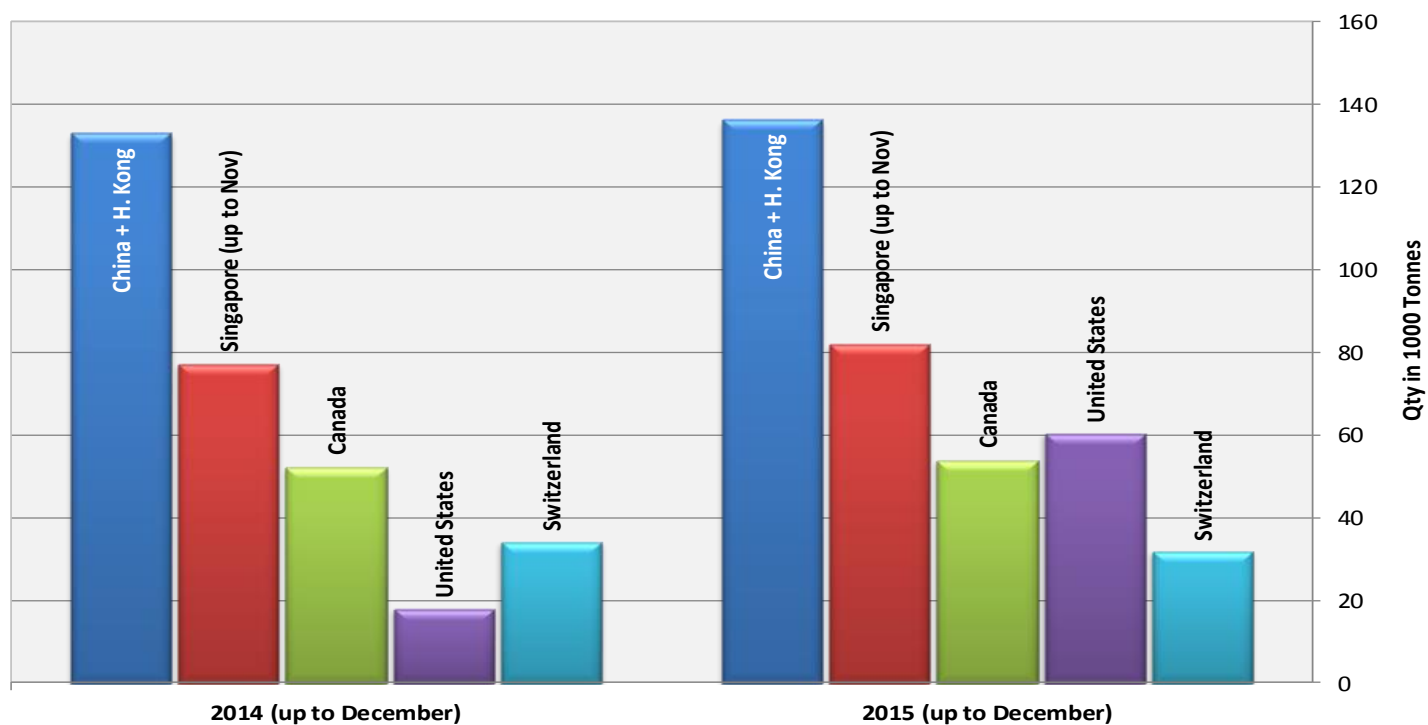
MAIN IMPORTERS



Main Importers of EGGS Products (up to December)

Source : GTA & Eurostat

(excl. Eggs for hatching)

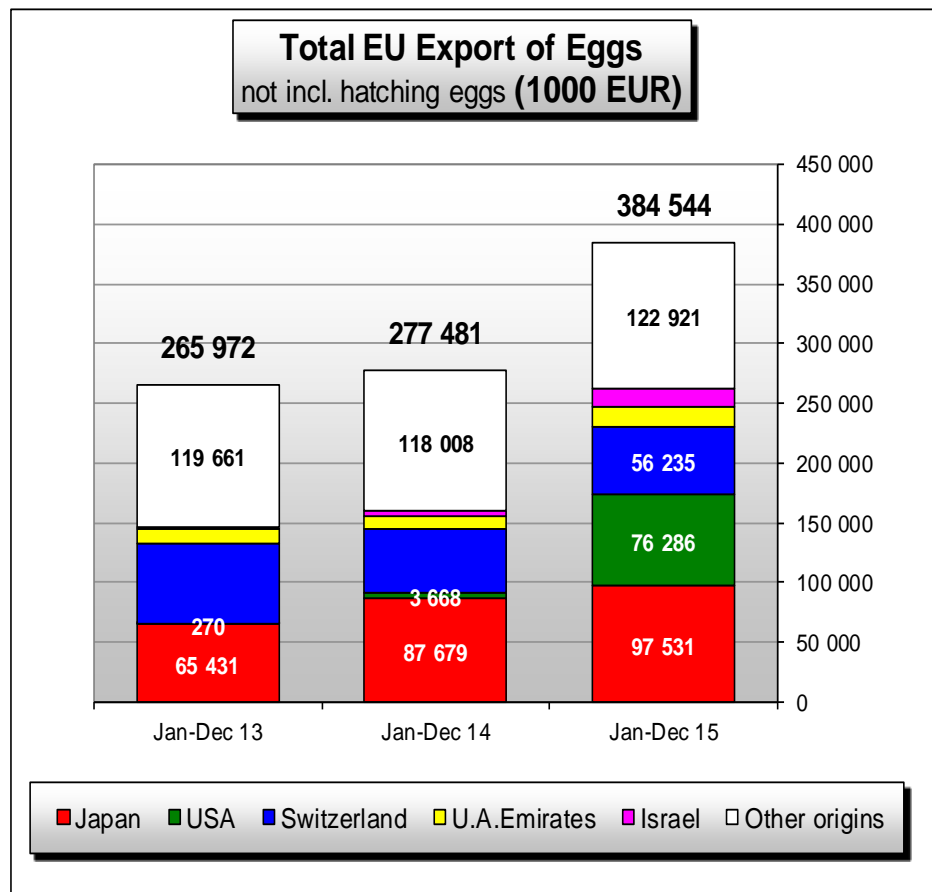
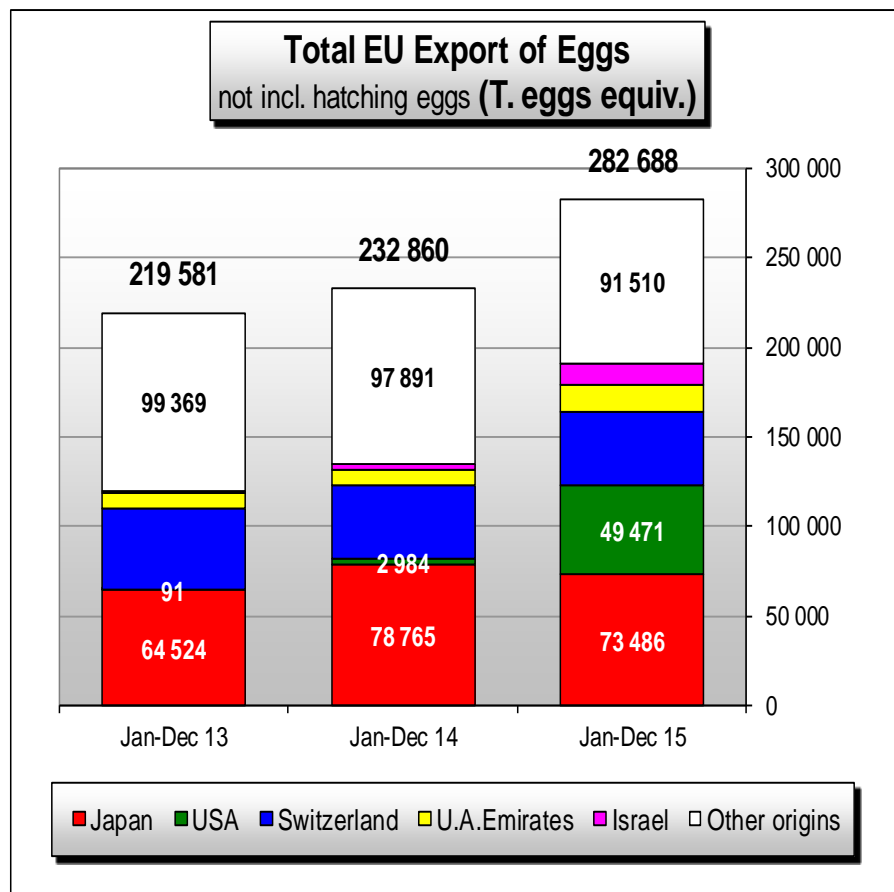


EU Exports of Eggs:

Trade Figures (*Comext – tonnes egg equiv.*) not incl. Hatching eggs

	2011		2012		2013		2014		Jan-Dec 15		Compared to Jan-Dec 14
	tonnes	%	tonnes	%	tonnes	%	tonnes	%	tonnes	%	
Japan	66 354	31%	66 935	36%	64 522	30%	78 765	34%	73 486	26%	- 6.7%
USA	636	0%	180	0%	98	0%	3 020	1%	49 471	18%	+++
Switzerland	42 163	19%	41 888	23%	41 991	20%	39 379	17%	41 562	15%	+ 0%
U.A.Emirates	8 261	4%	1 676	1%	10 449	5%	8 118	4%	15 116	5%	+ 84%
Israel	2 654	1%	1 060	1%	936	0%	3 491	2%	11 544	4%	+++
Angola	17 524	8%	17 110	9%	12 905	6%	16 077	7%	8 819	3%	- 48%
Secr.Extra	1 148	1%	2 634	1%	8 260	4%	3 325	1%	5 649	2%	+ 69%
Thailand	7 251	3%	6 406	3%	5 913	3%	4 939	2%	5 147	2%	+ 4%
Hong Kong	5 354	2%	409	0%	314	0%	2 379	1%	4 150	1%	+ 57%
Taiwan	7 939	4%	4 624	2%	3 411	2%	3 445	2%	4 083	1%	+ 18%
Russia	4 947	2%	5 982	3%	10 538	5%	7 659	3%	3 853	1%	- 50%
Others	52 844	24%	36 868	20%	55 299	26%	57 866	25%	59 809	21%	
EXTRA EU 28	217 075		185 771		214 636		228 464		282 688		
% change			- 14%		+ 16%		+ 6%		+ 21.4%		

EU Egg Exports



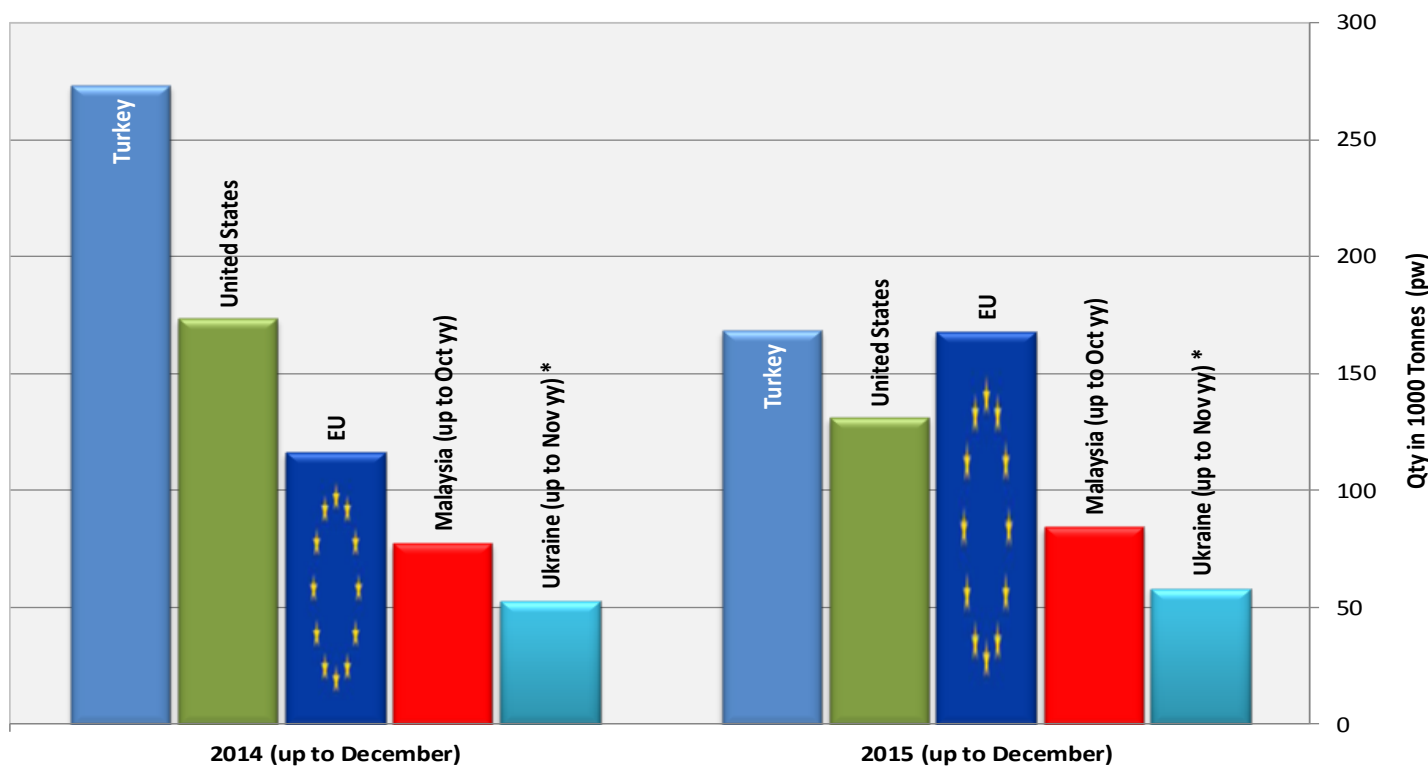
MAIN EXPORTERS



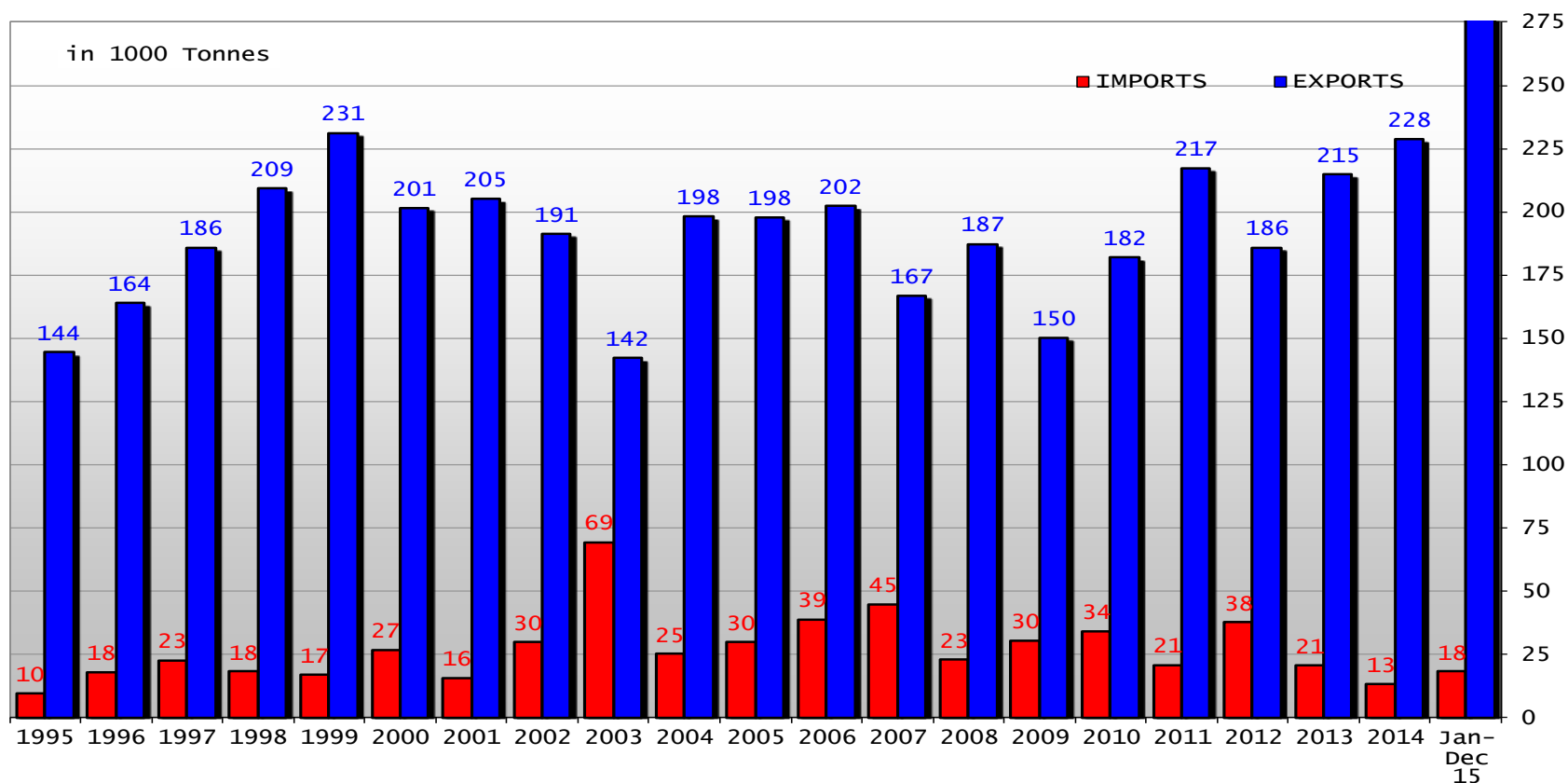
Main Exporters of EGGS Products (up to December)

Source : GTA & Eurostat

(excl. Eggs for hatching)



EU Egg Trade Balance (not including Hatching eggs)



Where to find data:

- http://ec.europa.eu/agriculture/markets/index_en.htm
- Click on link: Eggs
- Click on link: Presentations and prices
(righthand side under: in this chapter)
- Choose the item (link) you want