

The Signpost Programme: Farmers for Climate Action

Tom O'Dwyer,
Head of Signpost Programme,
Teagasc





40

7700

MADRID

SIGNPOST
Farmers for Climate Action

Target 25% reduction in greenhouse gases (GHGs) from agriculture by 2030

Paris Agreement
Limit temperature rise to
<1.5°C

EU Green Deal
Climate neutral by
2050

Climate Action Plan
↓51%
by 2030

Agriculture's percentage of national emissions
37%

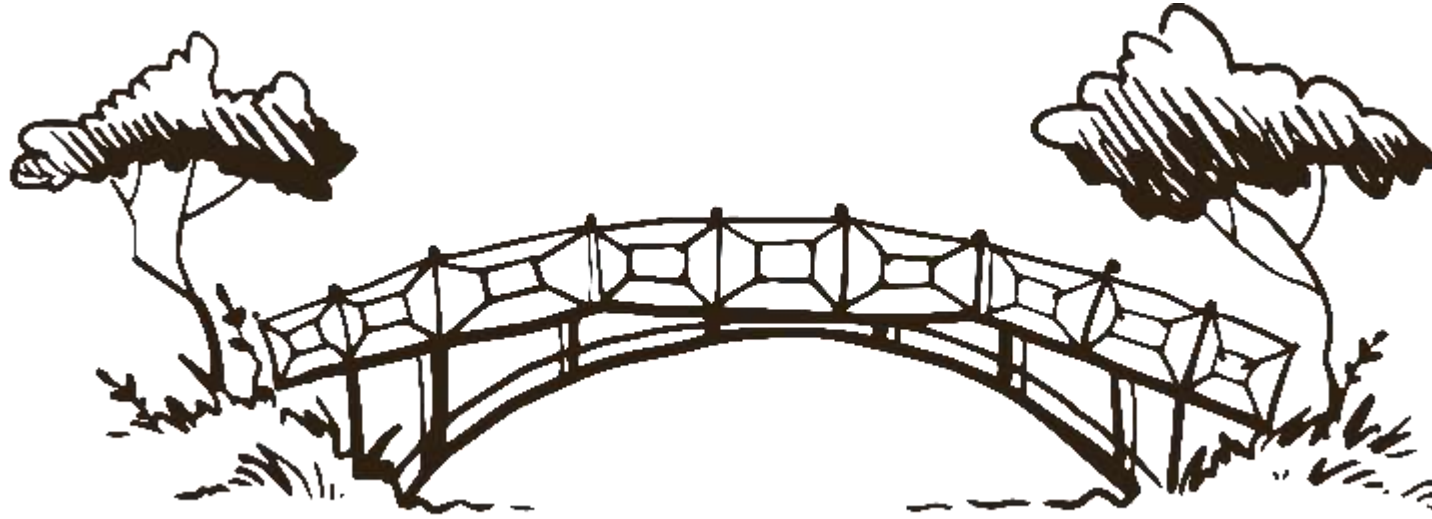
Agriculture GHG emissions
↓25%
by 2030

Irish food and drink exports 2021
€13.5bn

Number of farmers
137,000



Science to Practice: The Signpost Programme



Knowledge producer

- Environmental and production research
- Marginal Abatement Cost Curve (MACC)
- Future research

Knowledge broker

- The Signpost Programme team

Knowledge user

- Advisers and other actors
- Farmers



First time whole of industry programme with 62 partners

Partners



Government, State Agencies and Sponsors



Supporters



Signpost Farmers



Signpost Advisory Programme



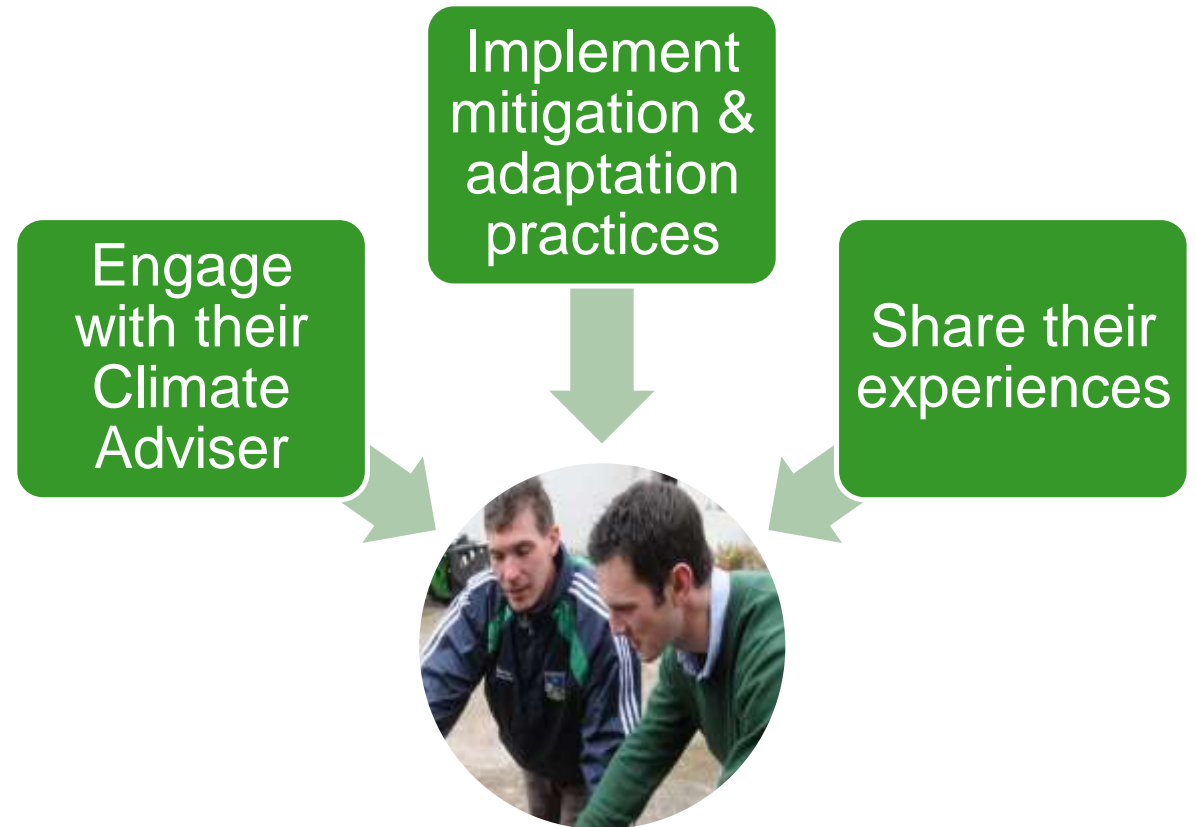
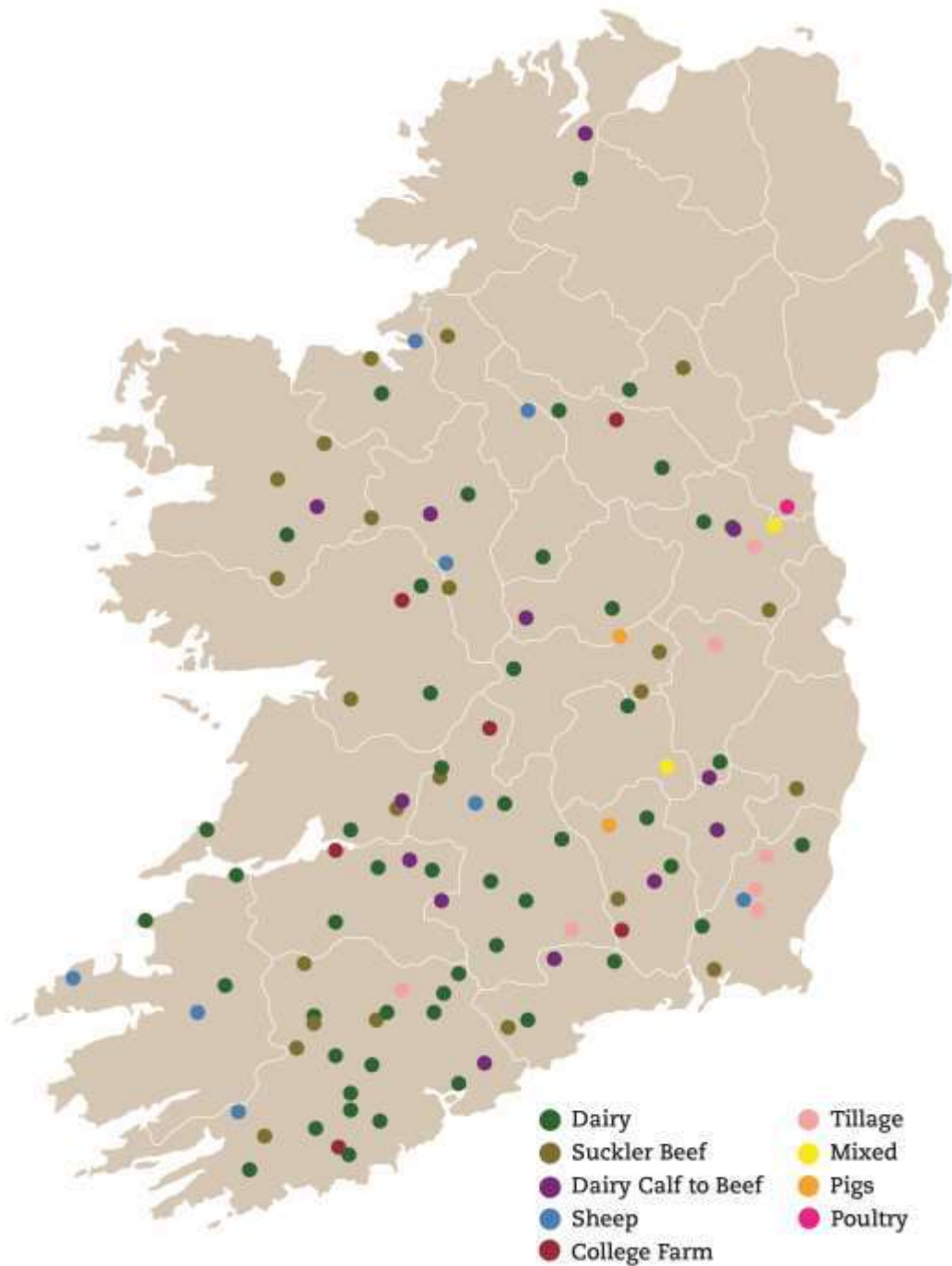
**National Agricultural Soil
Carbon Observatory (NASCO)**



New

Signpost Farmers





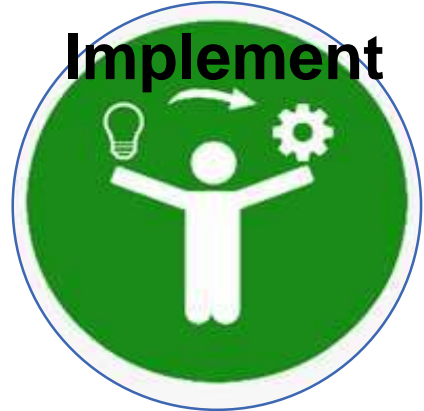
Farmer to farmer learning



NEW
Sustainability Digital Platform



Research proven practices



Continuous Improvement

Signpost Beef Farm Sustainability Performance 2021

35 beef farmers – source: Teagasc National Farm Survey



429 tonnes CO₂-eq* per farm
9.2kg CO₂-eq per kg liveweight (IPCC)+



*Carbon dioxide equivalent. +Intergovernmental Panel on Climate Change.

Gaseous Emission					
Code	Issue	Current	Target in Year 1	Target in 3 Years	Action
General Measure					
GE1	Use of Protected Urea - Proportion of Total Chemical N as Protected Urea	30-40% N	>50% of N	>50% of N	I am committed to maximising t emissions. I will call my Merchant to orde
GE2	Soil Nutrient Management for Improved N Efficiency	Follow Plan reasonably well	Follow Plan reasonably well	Follow plan closely	I am committed to following m emissions. I will implement my NMP with
GE3	Lime Status - Mineral Soils - Proportion of soils with pH at or above 6.2	0-25% above 6.2	25-50% above 6.2	75 -90% above 6.2	I am committed to implement m I will apply lime to all mineral s
GE4	P Index on High Output Pasture - Proportions of soils with P index 3 or 4	50-75% Index 3 or 4	50-75% Index 3 or 4	75-90% Index 3 or 4	I am committed to correcting k
GE5	Are you using LESS for Slurry application	Dribble Bar	Dribble Bar	Dribble Bar	I am committed to applying all emissions from my farm. I will use the Dribble Bar for a
GE6	Slurry Spread timing- % of Slurry spread before 15 May	25-50%	25-50%	50-75%	silage ground is too wet in sp
GE7	Proportion of Clover in Sward	Low -But Managing for Clover	Low -But Managing for Clover	Moderate - 10-20% sward	I am committed to having over GHG emissions from my farm I will improve soil fertility befo the availability of P. Then imp I will incorporate clover seed.
GE8	Managing my farm for Grazing Season Length	Using Autumn and Spring Grass Planner to improve Grazing season length	Using Autumn and Spring Grass Planner to improve Grazing season length	Using Autumn and Spring Grass Planner to improve Grazing season length	I am committed to optimising th from my farm. I will apply N or Slurry when s growth I will use on/off grazing to get
GE9	My Grazing Management	Grass Measuring on Pasturebase	Grass Measuring on Pasturebase	Grass Measuring on Pasturebase	I will improve grazing infrastru I will avoid damage to grazing I will measure grass on Pastu
GE10	Animal Health - My strategy for the year ahead	Implement a comprehensive Vet led health plan with best practice vaccination/screening/preventative medicine and treatments	Implement a comprehensive Vet led health plan with best practice vaccination/screening/preventative medicine and treatments	Implement a comprehensive Vet led health plan with best practice vaccination/screening/preventative medicine and	I am committed to prepare anc to minimise GHG emissions fr I will implement effective Vacc I will use the EBI sub-index fo

Focus on mitigation actions...

...to achieve reductions in GHG emissions

In summary

- ✓ Network of demonstration farmers established
- ✓ Baseline performance measured
- ✓ Farm specific, tailored plans developed
- ✓ Messages shared with other farmers

A good start...with lots more to do





Thank You.

Email:

tom.odwyer@teagasc.ie

signpost@teagasc.ie

LinkedIn:

www.linkedin.com/in/tomodwyer-teagasc

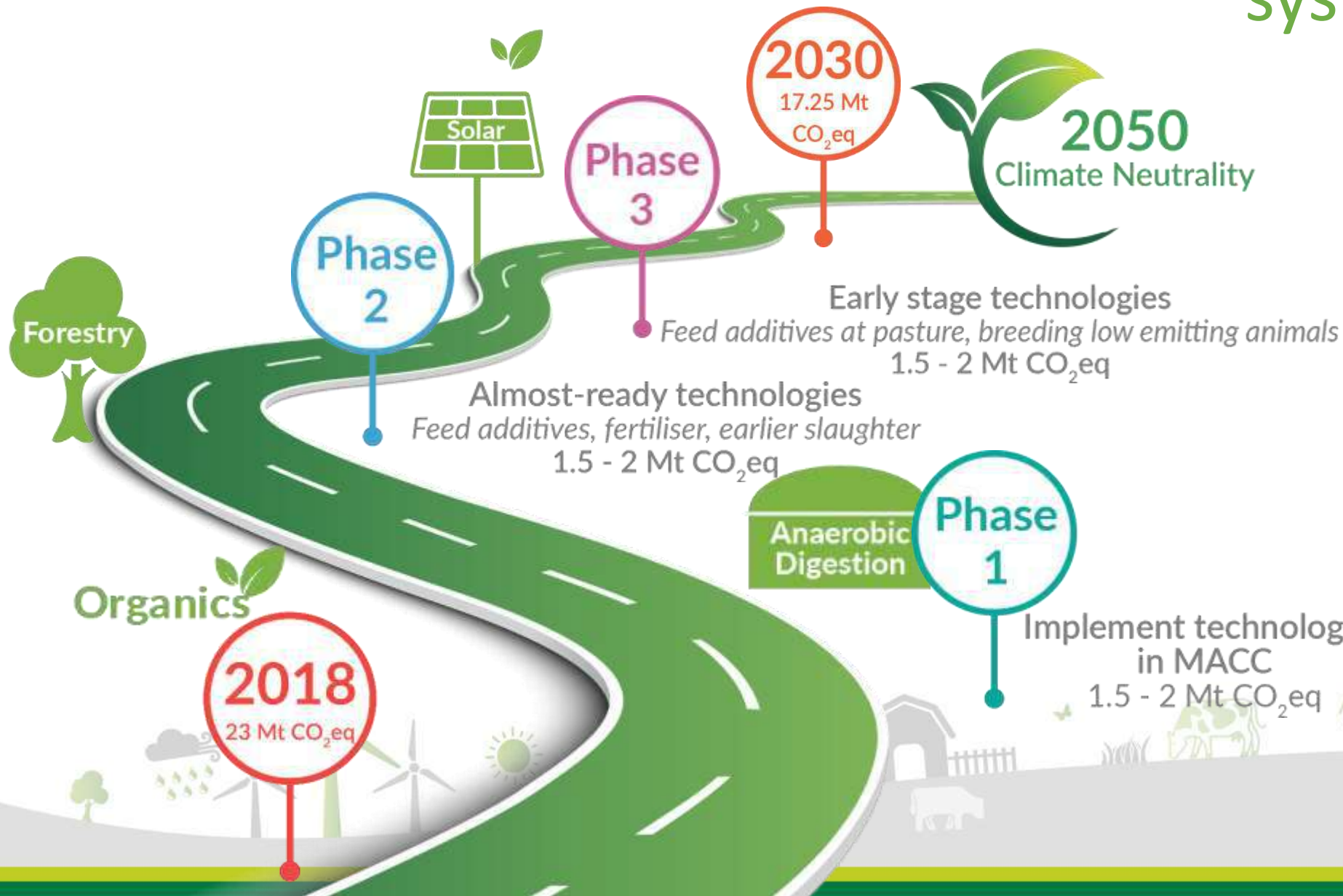
Twitter:

@TeagascSignpost

Web:

www.teagasc.ie/signpost

Is there a roadmap through technology, efficiency and system change?



- Yes, it is possible...but will be challenging
- Must make the first step (Phase 1) now
- 2 key roles for Teagasc
 - Develop more technologies
 - Support farmers with adoption