



European
Commission

Rural Development Key facts and

Christiane Kirketerp de Viron
DG Agriculture and Rural
Development



Agriculture
and Rural
Development

What will the RDPs achieve?

Result-orientated policy

Quantitative targets set in each RDP for each focus area

These targets represent outcome only of actions directly programmed under the stated objective

The values given do not include secondary contributions to other focus areas

Example:

The target value for non-agricultural jobs created under Focus Areas 6a and b does not include new jobs created as a direct/indirect effect of actions under other Focus Areas (e.g. farm viability or renewable energy)

Targets for Knowledge Transfer & Innovation

3.9 million training places
3.9% of expenditure on
knowledge transfer, advice
and cooperation
15 250 Co-operation Projects



Targets for farm viability and competitiveness



335 000 agricultural holdings with RDP support for investments in restructuring or modernisation (2.8% of holdings)



175 500 agricultural holdings with RDP supported business development plan/investments for young farmers (1.5% of holdings)

Targets for promoting food chain organisation

300 000 agricultural holdings receiving support for participating in quality schemes, local markets and short supply circuits, and producer groups/ organisations

645 000 agricultural holdings participating in risk management schemes



Targets for Biodiversity



17.7% of agricultural land and
3.45% of forest area under
management contracts supporting
biodiversity and/or landscape

Targets for Water management

15% of agricultural land and
4.3% of forestry land under management contracts
to improve water management



Targets for soil management

14.3% of agricultural land and
3.6% of forestry land under management
contracts to improve soil management
and/or prevent erosion

Targets linked to climate change and resource efficiency

7.6% of agricultural land under management contracts targeting reduction of GHG and/or ammonia emissions

2% of Livestock Units concerned by investments in live-stock management in view of reducing GHG and/or ammonia emissions



15% of irrigated land switching to more efficient irrigation systems

€ 2.8 billion total investment in energy efficiency

€ 2.7 billion invested in renewable energy production

4% of agricultural and forestry land under management to foster carbon sequestration/conservation



Target for Job Creation

117 500 non-agricultural new jobs directly created, of which:
73 000 in relation to diversification actions and creation and development of small enterprises
44 500 through LEADER groups



Targets for local development

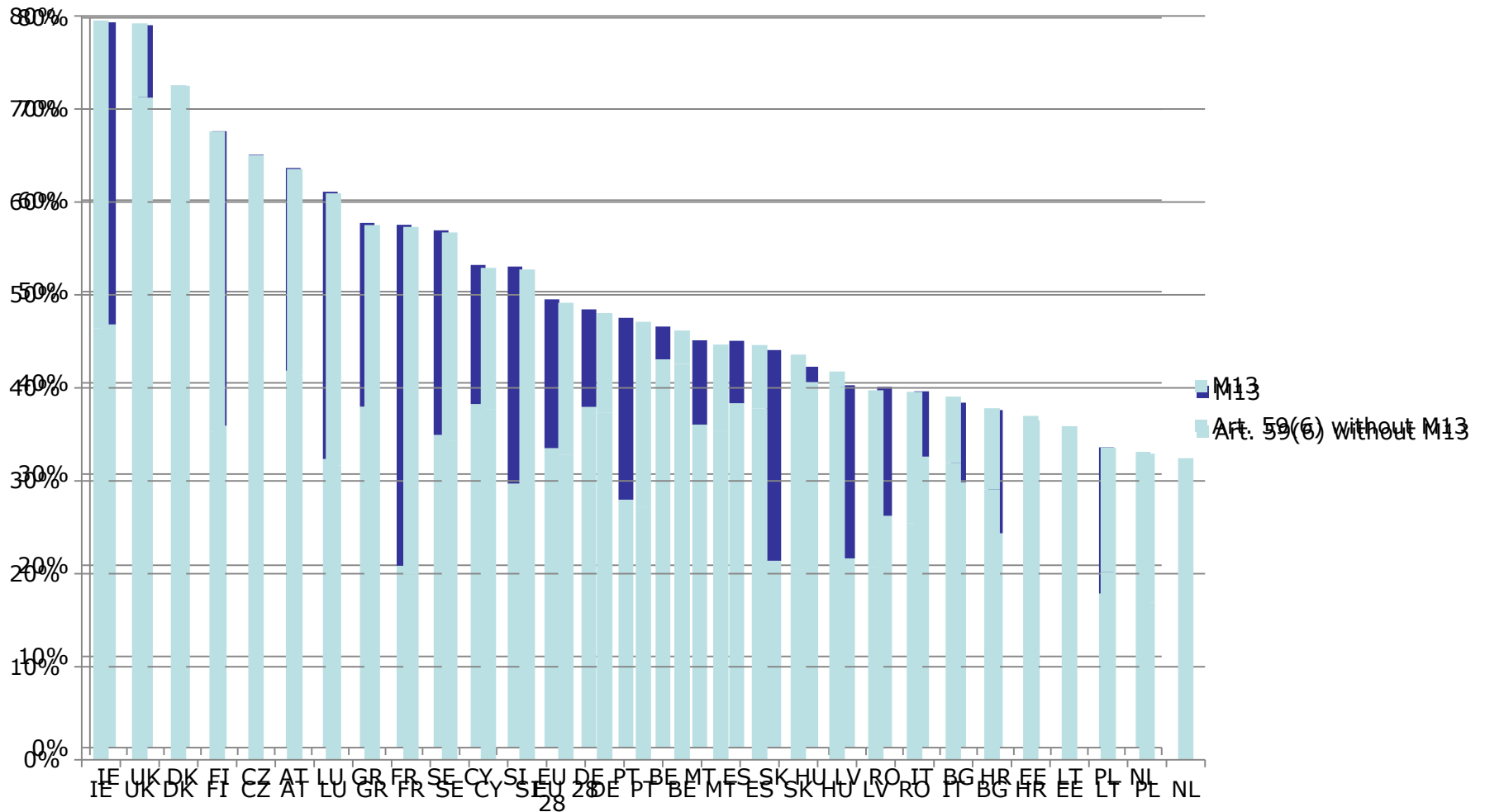
51 million rural citizens benefitting from improved services

153 million rural citizens coming under a local development strategy

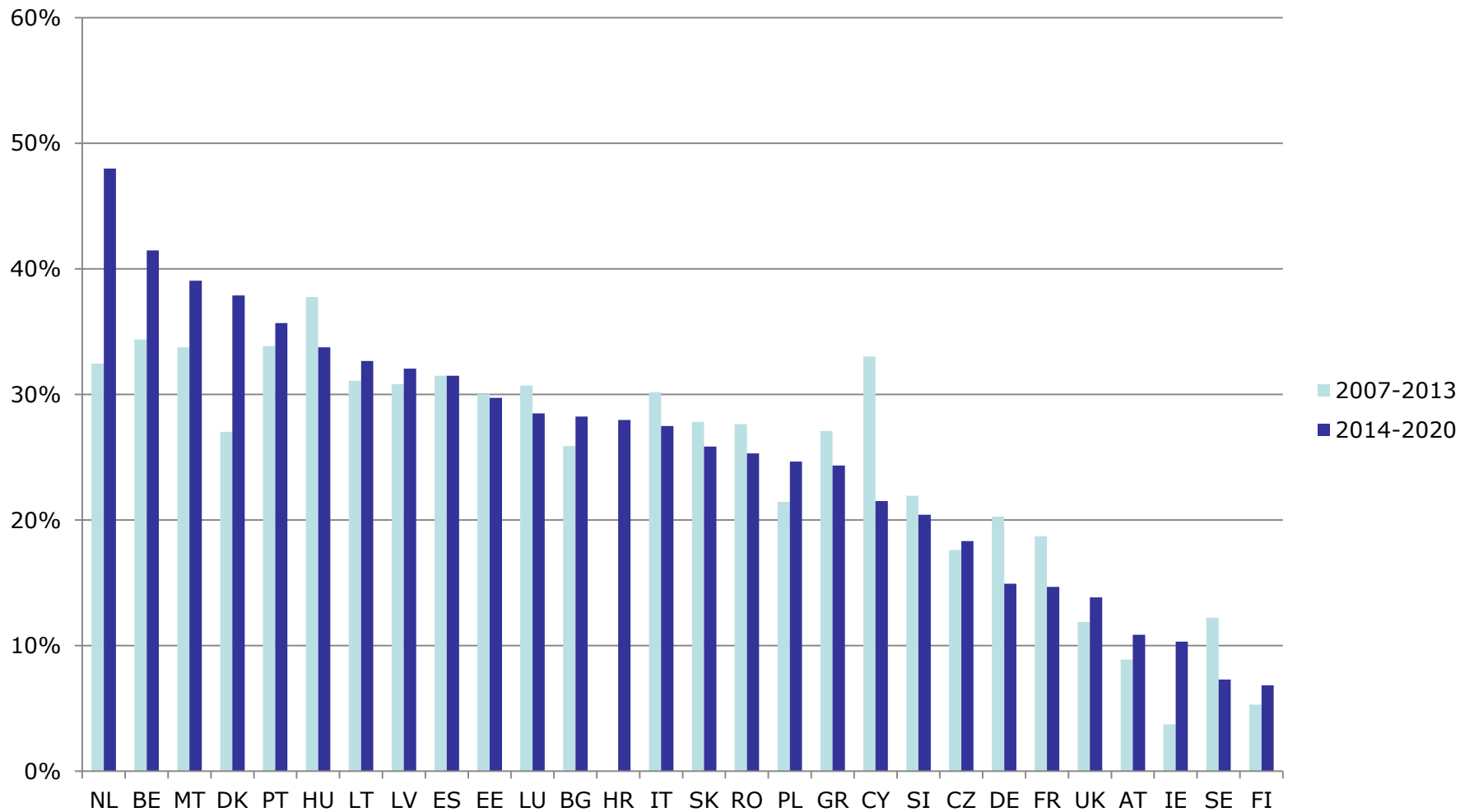
18 million rural citizens benefitting from improved access to ICT services and infrastructure



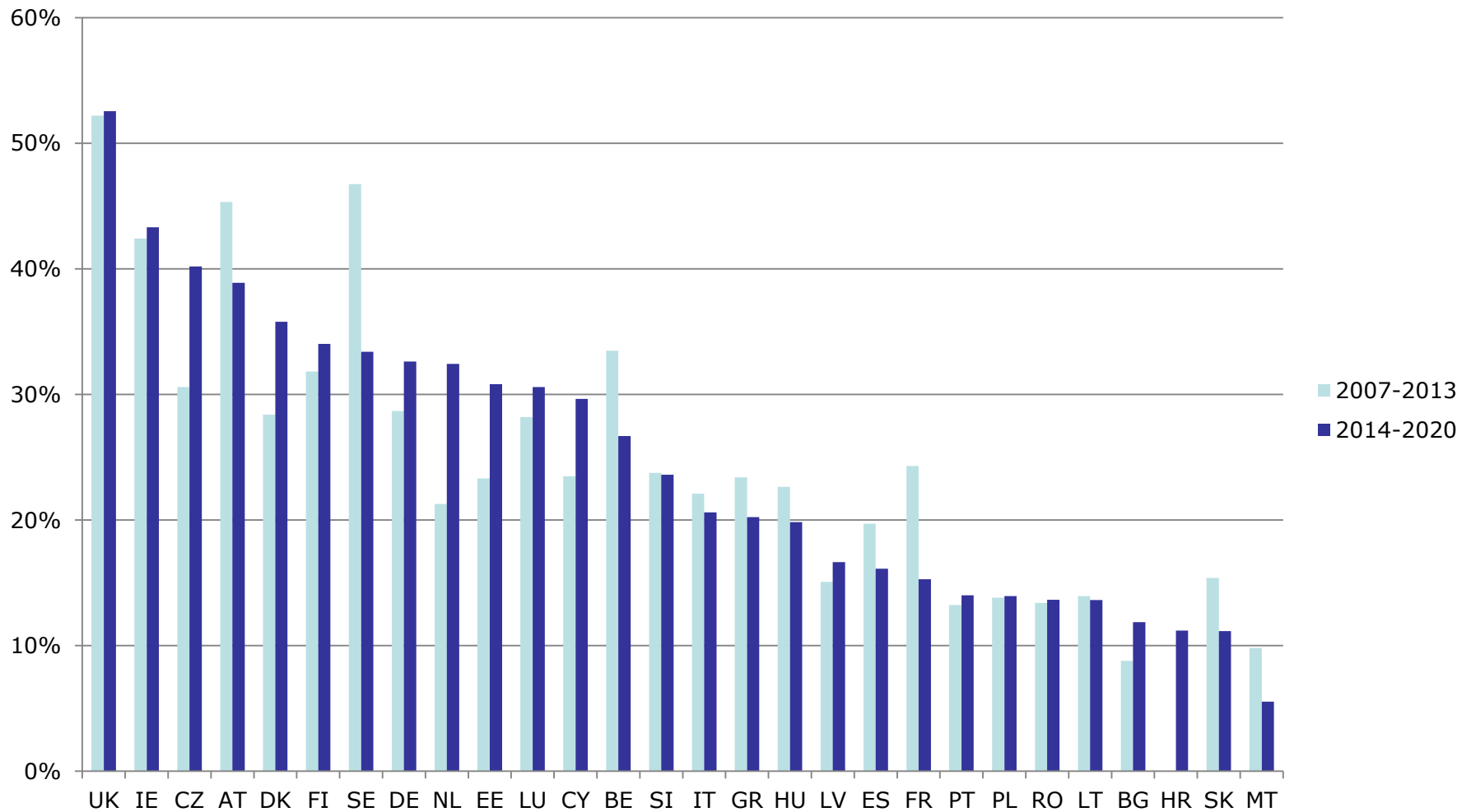
Minimum expenditure: Environment/Climate



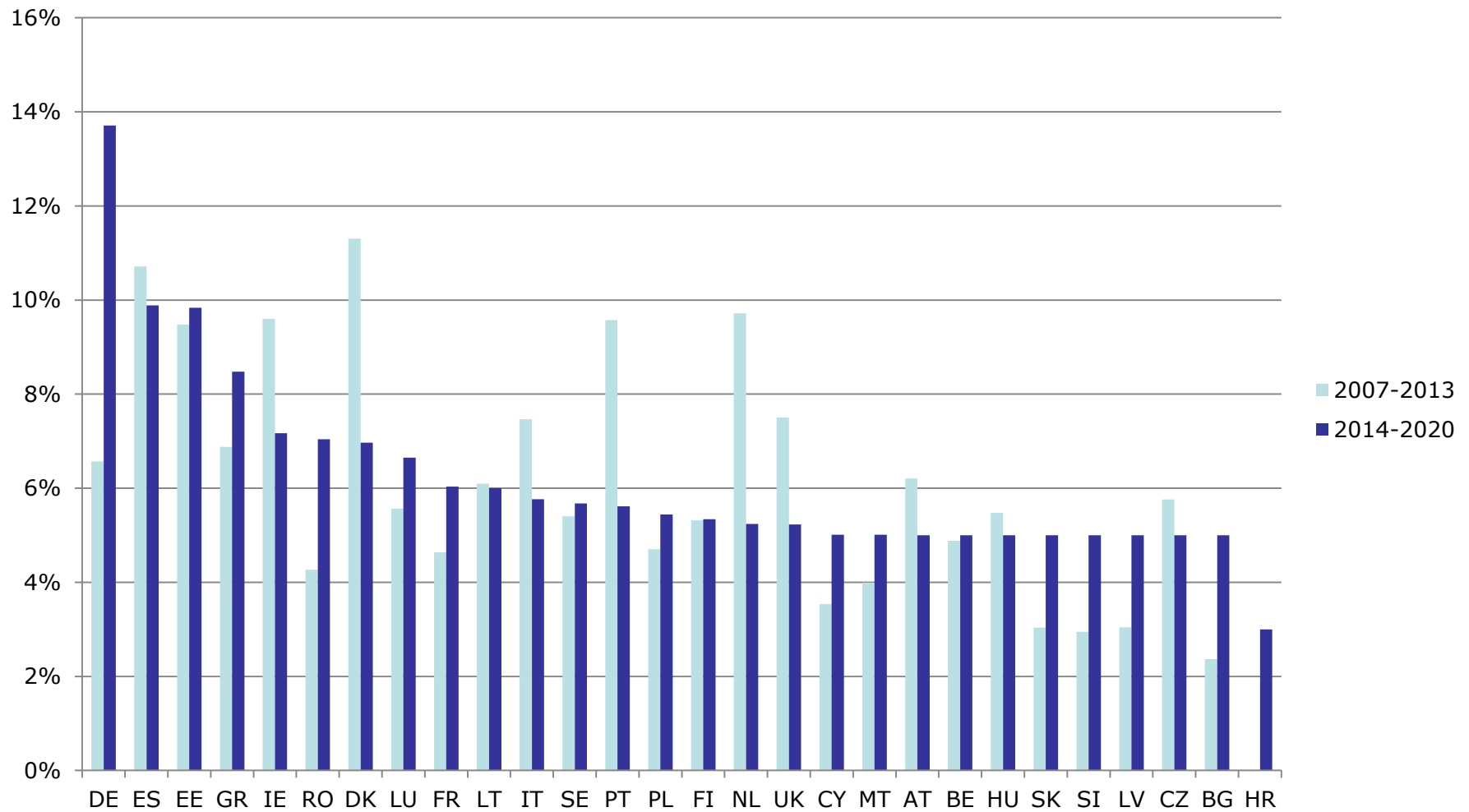
Investments



Agri-environment



Leader



Thank you for your attention