



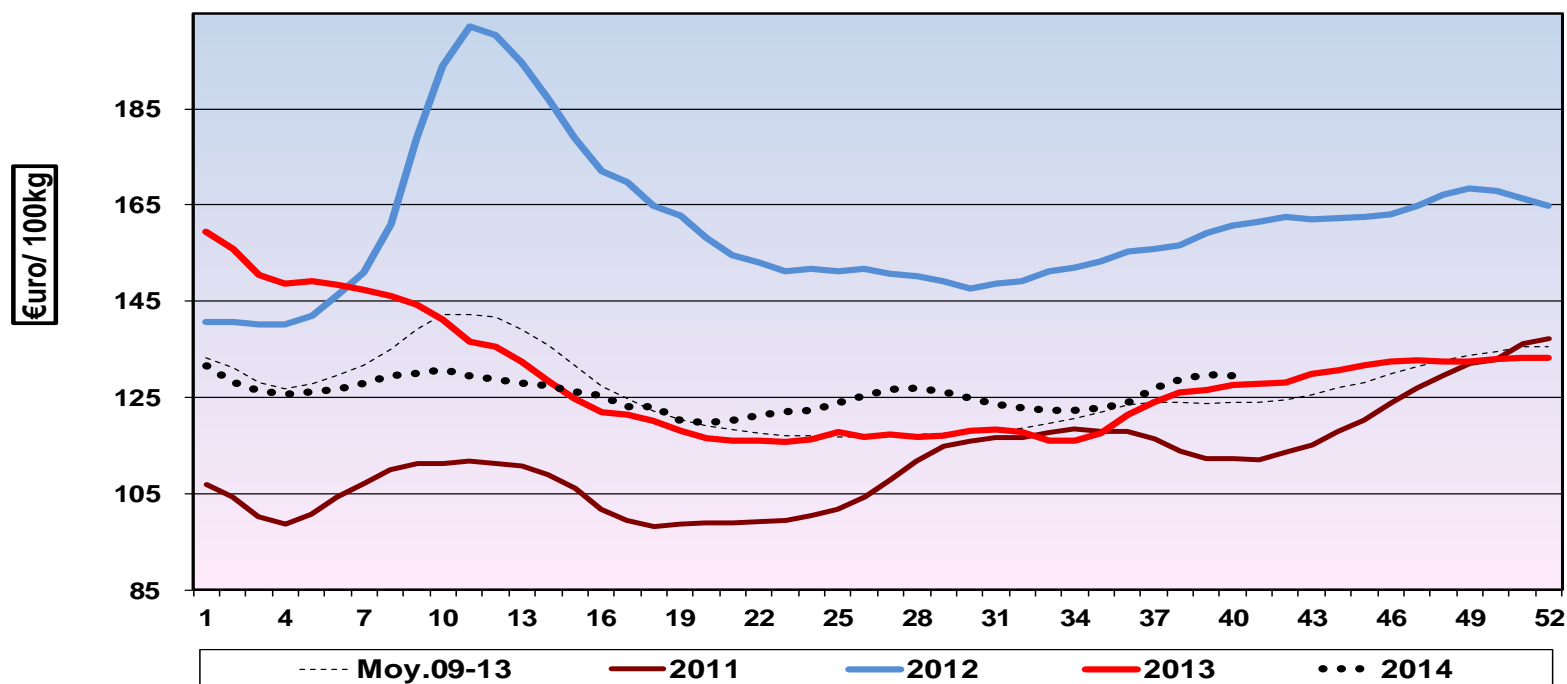
# **EU Market Situation for Eggs**

**Civil Dialog Group**

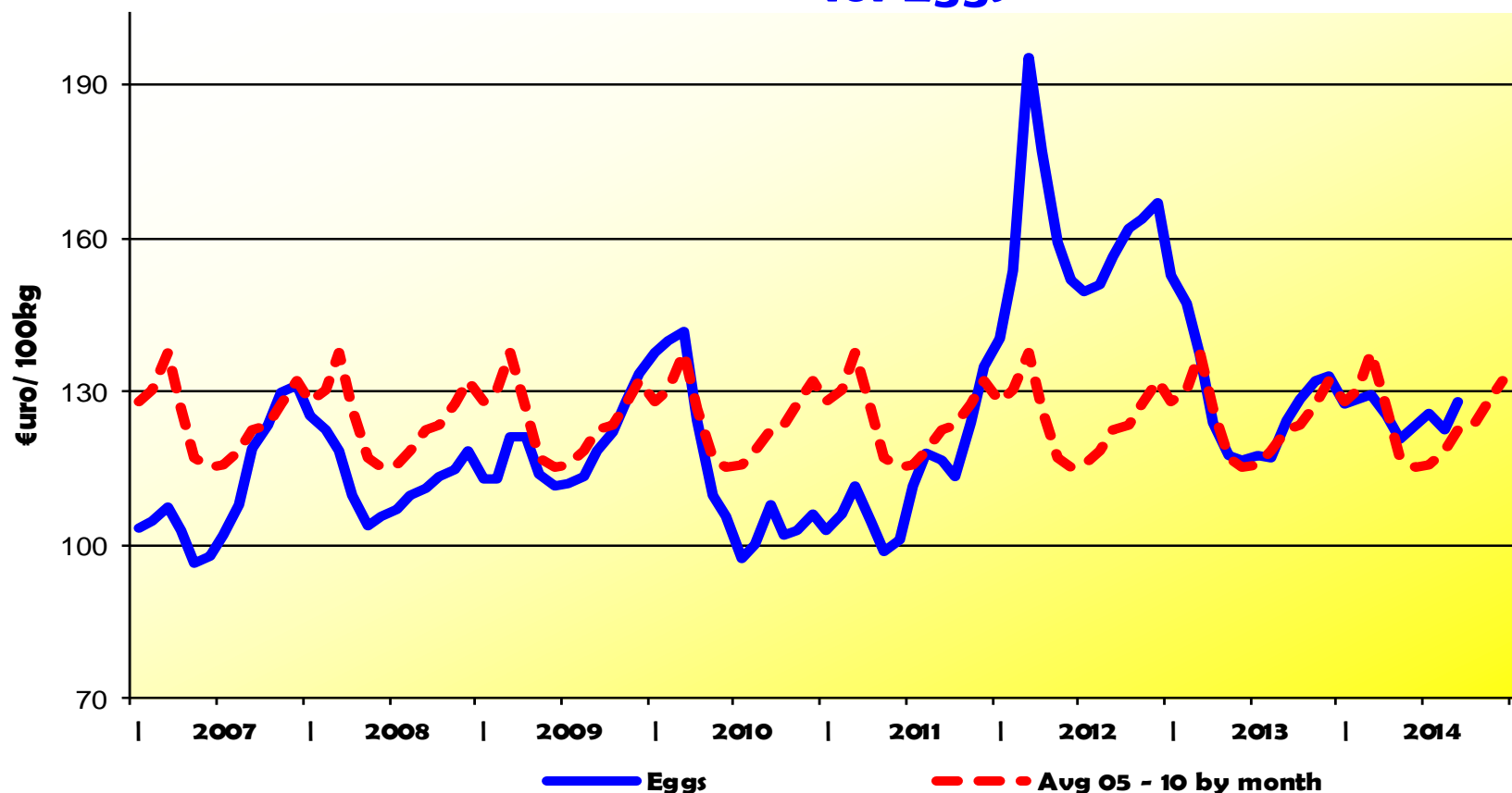
**9 October 2014**

## Evolution of the weekly EU average price for Class A eggs in packing stations

[http://ec.europa.eu/agriculture/poultry/presentations/index\\_en.htm](http://ec.europa.eu/agriculture/poultry/presentations/index_en.htm)



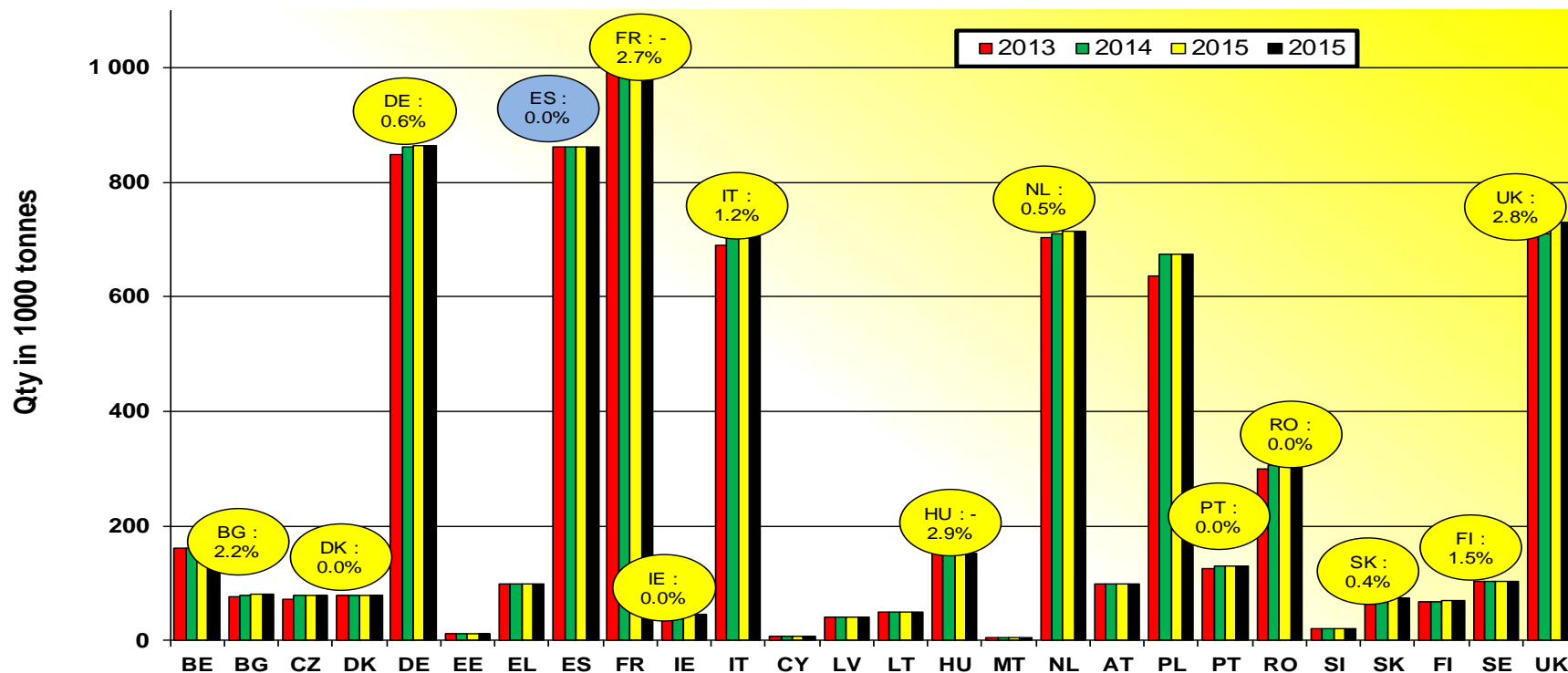
## Development of the Community average market price for Eggs



## Experts EU production forecast of Total Eggs

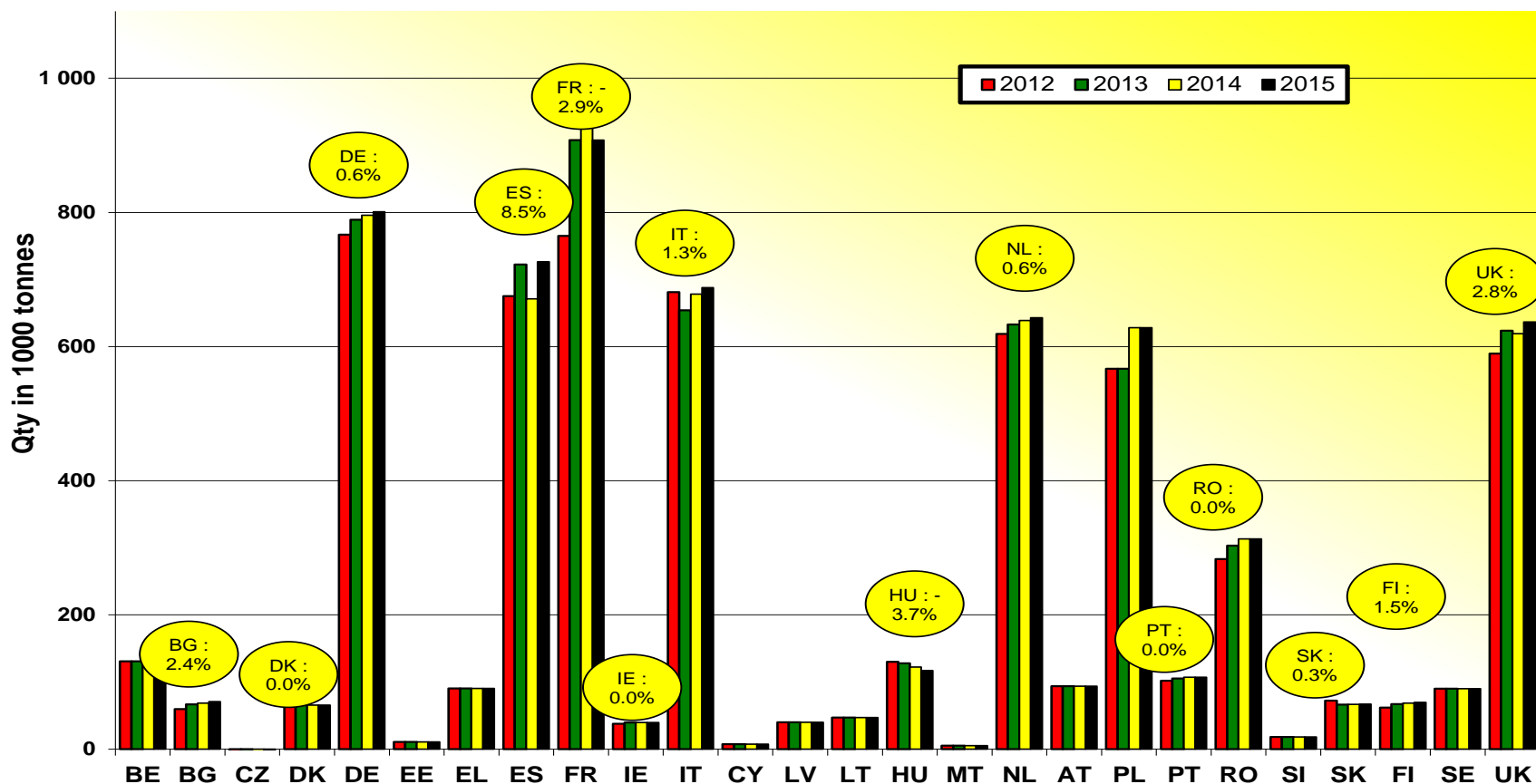
(Eggs in shell + Hatching Eggs)

2014: 7 436.2 Th T (+ 1.4%) & 2015: 7 447.4 ThT (+ 0.2%)



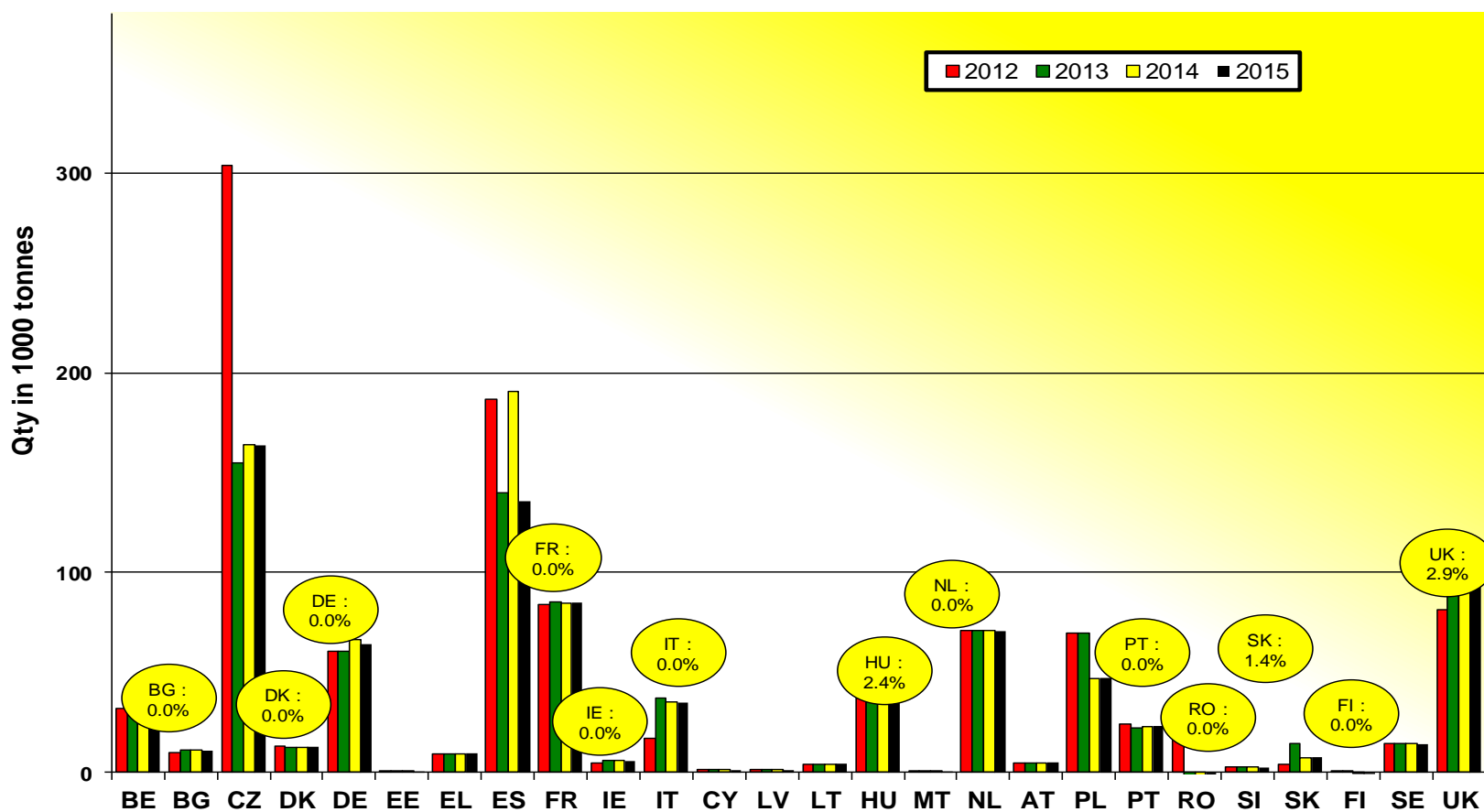
## Experts EU production forecast of Eggs for consumption

2014: 6 596.7 Th T (+ 1.2 %) & 2015: 6 659.5 Th T (+ 0.5 %)

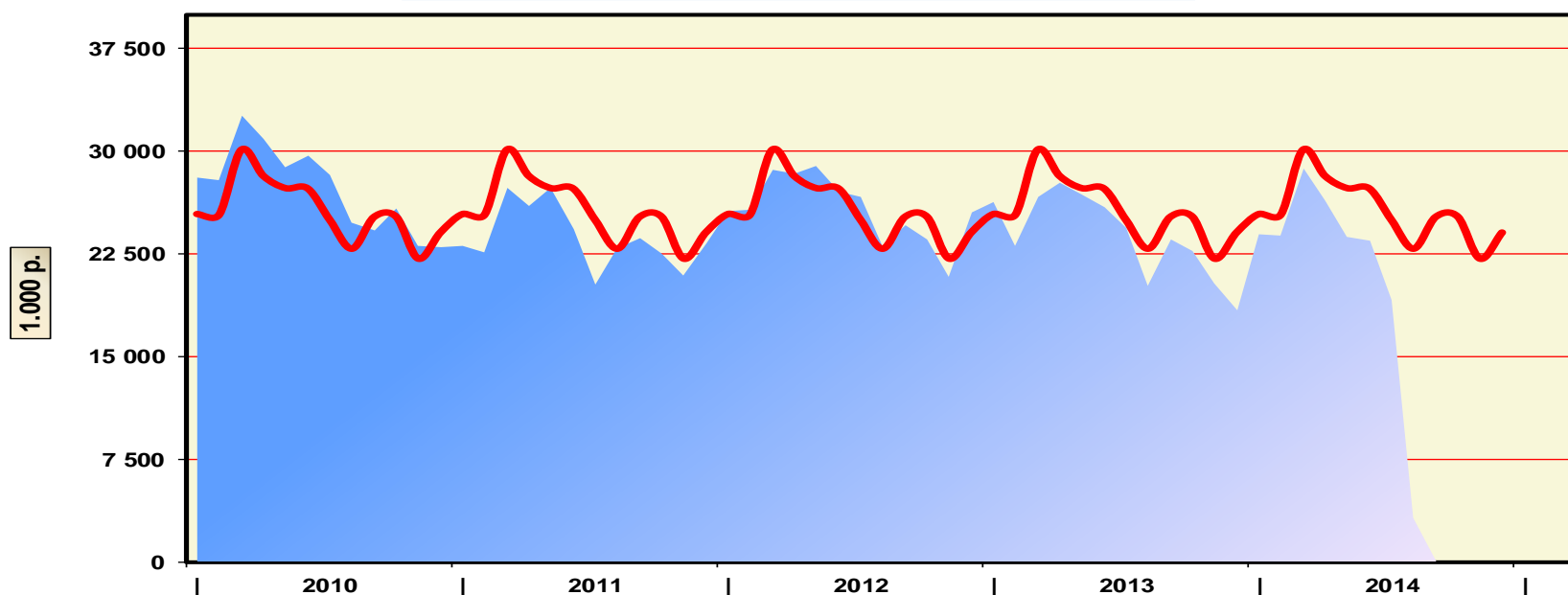


## Experts EU production forecast of Hatching Eggs

2014: 839.5 Th T (+3.4 %) & 2015: 842.9 Th T (+ 0.4 %)



## Placings of Laying chicks (1 000 pieces) compared to the baseline trend (baseline= monthly avg 2010 - 2013)

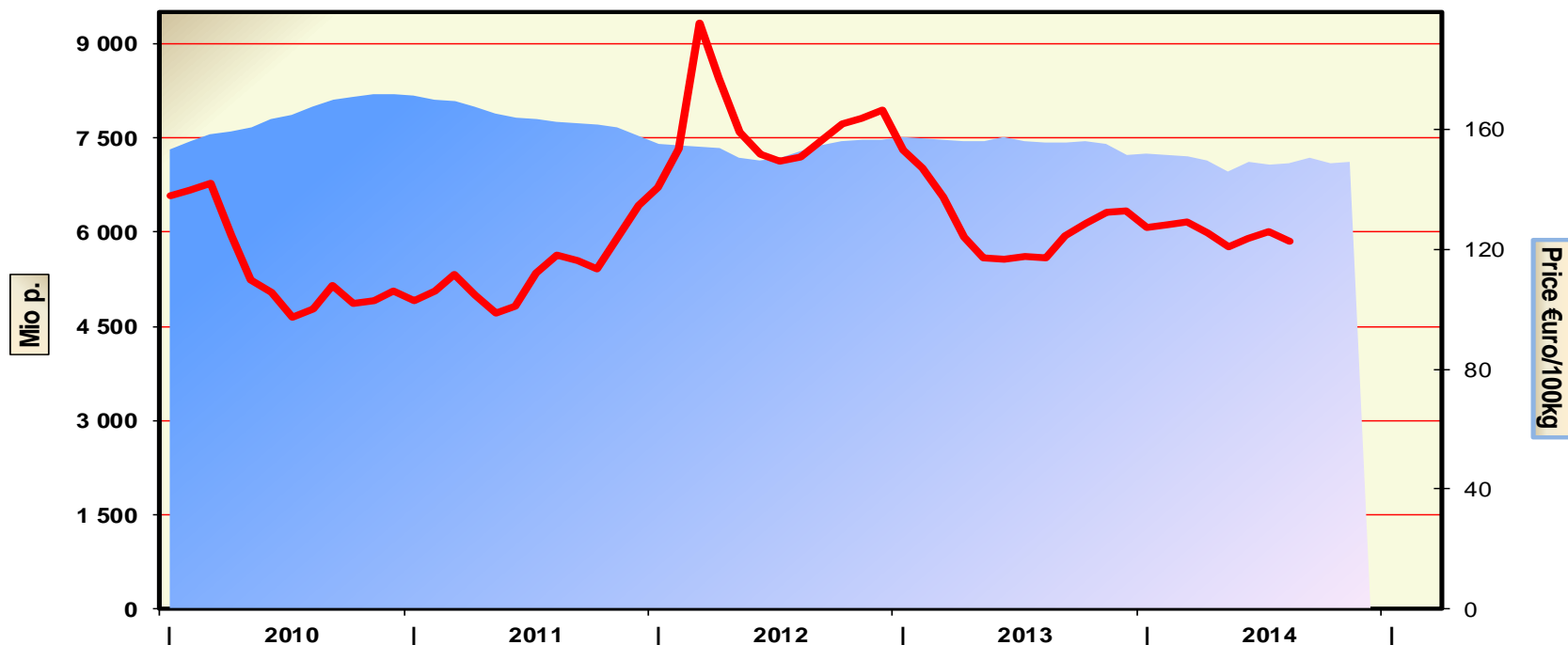


	Jan.	Feb.	March	April	May	June	July	Aug.	Sept.	Oct.	Nov.	Dec.
<b>2013</b>	26.225	23.042	26.777	27.539	26.832	25.923	24.550	20.098	23.553	22.822	20.108	21.000
<b>2014</b>	23.987	24.067	28.769	26.264	23.647	23.348	18.453					

Placings Laying Hens

(baseline= monthly avg 2010 - 2013) - laying chicks

## Production forecast of eggs in shell (Mio p). compared to the price development



	Jan.	Feb.	March	April	May	June	July	Aug.	Sep.	Oct.	Nov.	Dec.
<b>2013</b>	7.519	7.497	7.474	7.458	7.443	7.529	7.446	7.420	7.424	7.442	7.412	7.238
<b>2014</b>	7.262	7.234	7.219	7.147	6.971	7.125	7.093	7.116	7.194	7.107	7.053	



## TECHNICAL PARAMETERS FOR THE CALCULATION OF THE ESTIMATED STOCK LAYING HENS + EGG PRODUCTION

MEMBER STATE:	Member state
RESPONSIBLE CONTACT POINT:	Organisation or Ministry
Contacts' name	
E-Mail address	
Date of notification:	Date

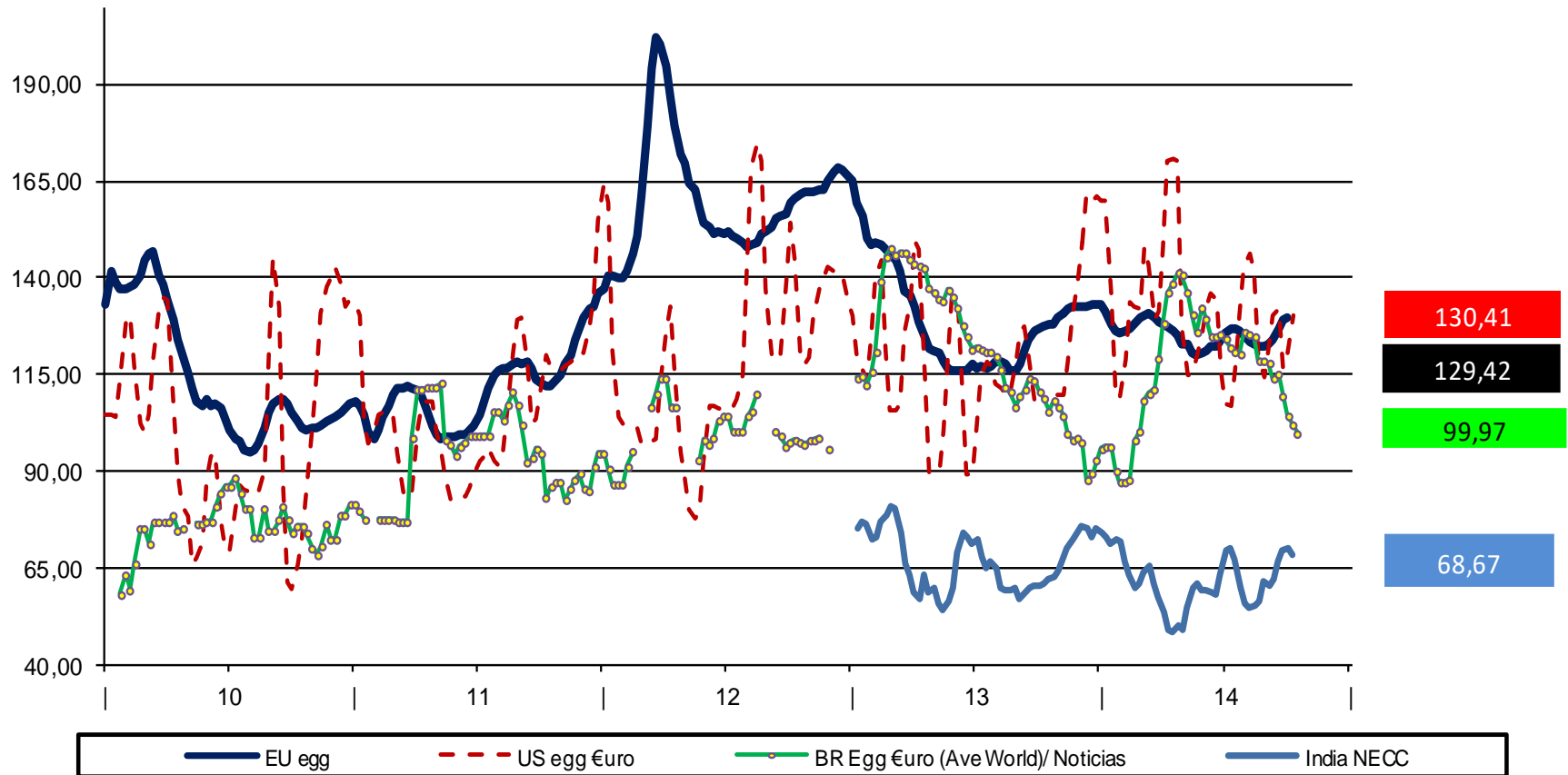
N° of months/N° de mois		13	12	11	10	9	8	7	6	5	4	3	2	1								
Total lay eggs/ponte	319,8	21,3	22,5	23,7	24,6	25,5	26,4	27,1	27,4	27,7	28,0	28,0	27,1	10,6								
Percentage/Pourcentage	70%																					
Death-rate/Mortalité	4%																					
N° of months/N° de mois		21	20	19	18	17	16	15	14	13	12	11	10	9	8	7	6	5	4	3	2	1
Total lay eggs/ponte	460,6	19,2	20,4	21,3	23,1	23,4	24,3	24,6	22,5	4,6	1,2	23,7	24,6	25,5	26,4	27,1	27,4	27,7	28,0	28,0	27,1	10,6
Percentage/Pourcentage	30%																					
Death-rate/Mortalité	9-11%																					

or

N° of months/N° de mois		13	12	11	10	9	8	7	6	5	4	3	2	1	
Total lay eggs/ponte	331,1	21,2	22,5	23,5	24,5	25,3	26,2	27,0	27,9	28,6	29,1	29,4	29,0	16,9	
Percentage/Pourcentage	100%														
Death-rate/Mortalité	5%														

**NB. The data given in these tables are an example and are not necessarily reflecting a MSS' reality. Each MS can have/ has different figures.**

## Egg prices of EU, USA, Brazil and India in €/100kg



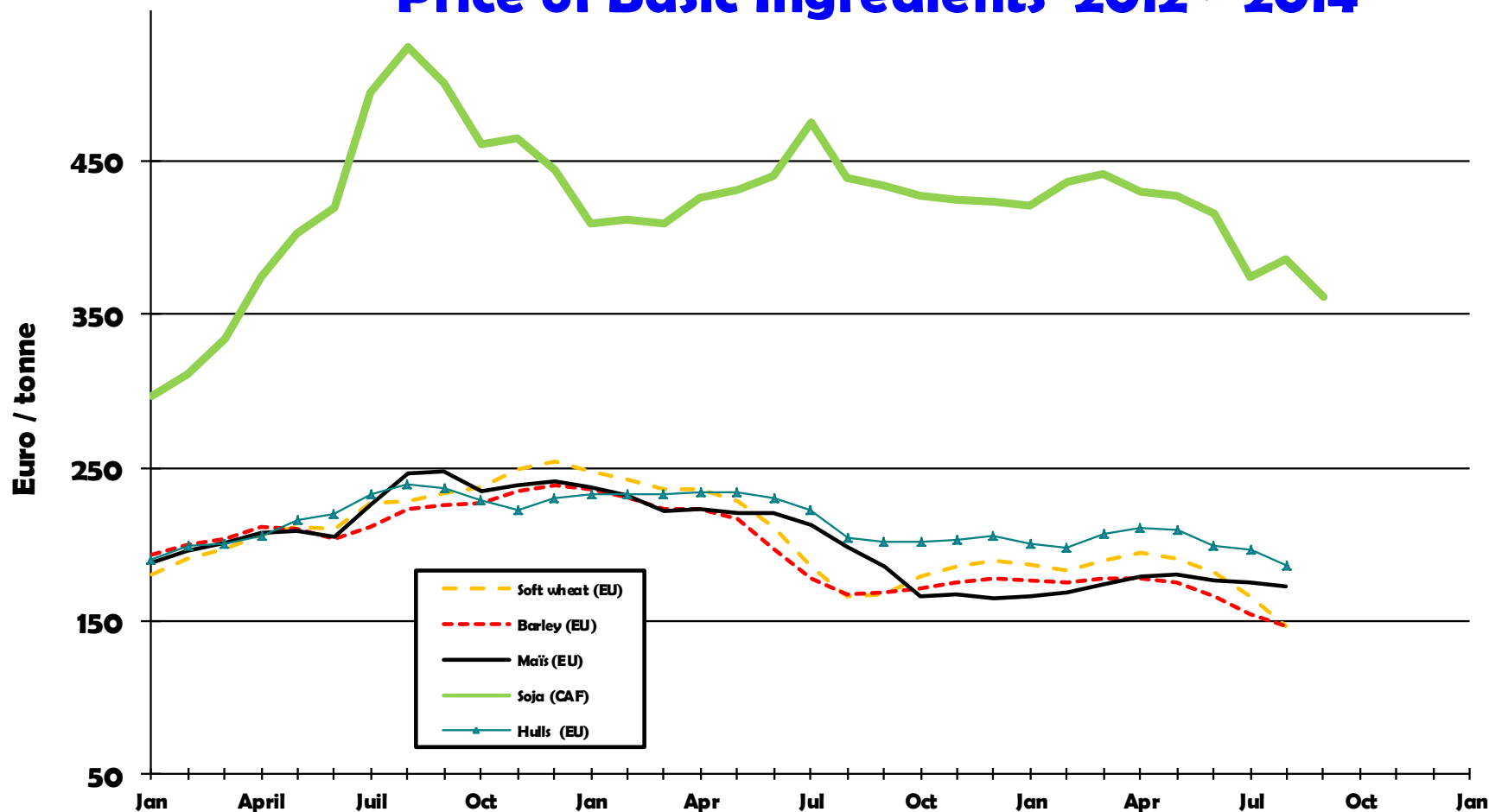
- *Used sites:*
- <http://feedstuffs.com/storyList.aspx?c=49&cn=Livestock and Poultry> (needs Login) USA compilation of USDA prices for eggs, meats and feed products see example below
- <http://www.noticiasagricolas.com.br/cotacoes/granjeiros> (Brazil)
- <http://www.e2necc.com/> (India)

### Livestock & Poultry Cash Market Comparisons

Livestock and meat (\$)	Sept. 24	Sept. 17	6 months ago	Year ago
Steers, Choice, carcass, 550-700 lb., cwt., Omaha	239.13	245.51	241.76	193.59
Steers, Choice, 1,050-1,200 lb., cwt. Okla/Texas	N/A	161.50A	150.00	124.00
Feeder Steers, 600-700 lb., cwt., Oklahoma City	248.50A	246.25A	193.50A	166.00A
Lean Hogs, Carcass, Iowa-Minn. 167-187 lb.(1)	103.61	99.79	120.93	93.59
Feeder Pigs, 40 lb. National Direct Delivered(2)	81.54	79.95	118.10	59.93
SEW Pigs, 10 lb., National direct delivered (per head)	61.72	60.57	91.50	42.11
Choice Beef, cutout, cwt.	239.11	244.88	239.25	193.60
Pork Loin, 185 lb. 51-52% lean, cutout, cwt.(3)	134.34	127.44	133.61	104.95
Hog Corn Ratio	36.16	31.82	27.56	20.2
Steer Corn Ratio	53.45	49.09	28.87	27.2
<b>Poultry and eggs (cents)</b>				
Chickens, Grade A, Fresh lb. Chicago	103.95a	102.71a	107.21a	90.00a
Hen Turkeys, Grade A, Frozen, lb., Chicago	114.00Aa	113.00Aa	104.00Aa	101.00Aa
Young Tom Turkeys, Grade A, Frozen lb. Chicago	114.00Aa	112.62Aa	103.50Aa	102.00Aa
Eggs, Grade A, Large, doz., Chicago	106.50	104.50	141.50	100.50

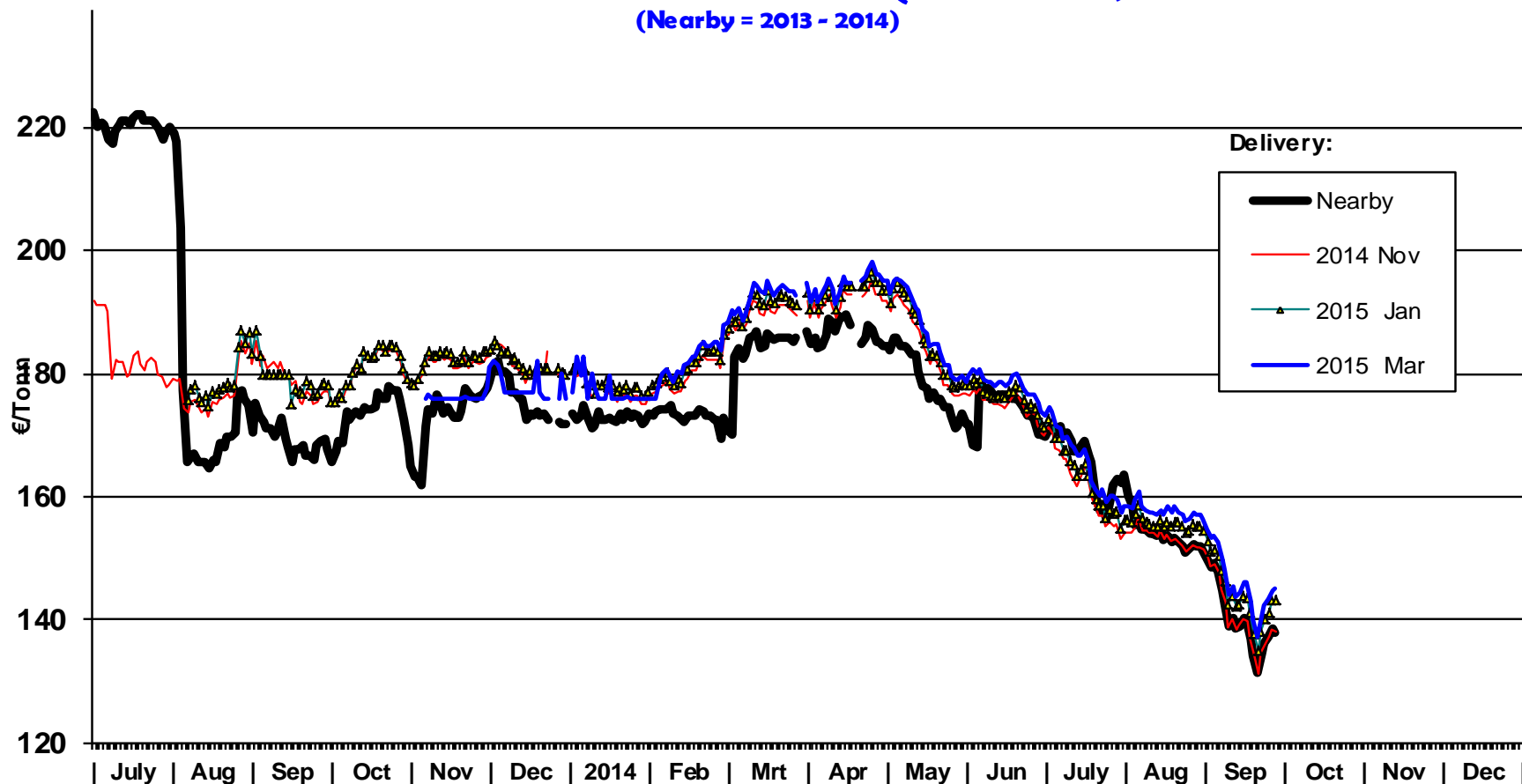
(1) Replaces live hogs; live hogs are 0.755 of quote. (2) Replaces Sioux Falls, 50-60 lb. (3) National FOB plant; replaces national daily carlot.  
 A: average      N/A: not available      a: offered      b: sales      Livestock, meat, poultry and egg prices from USDA.

## Price of Basic Ingredients 2012 - 2014

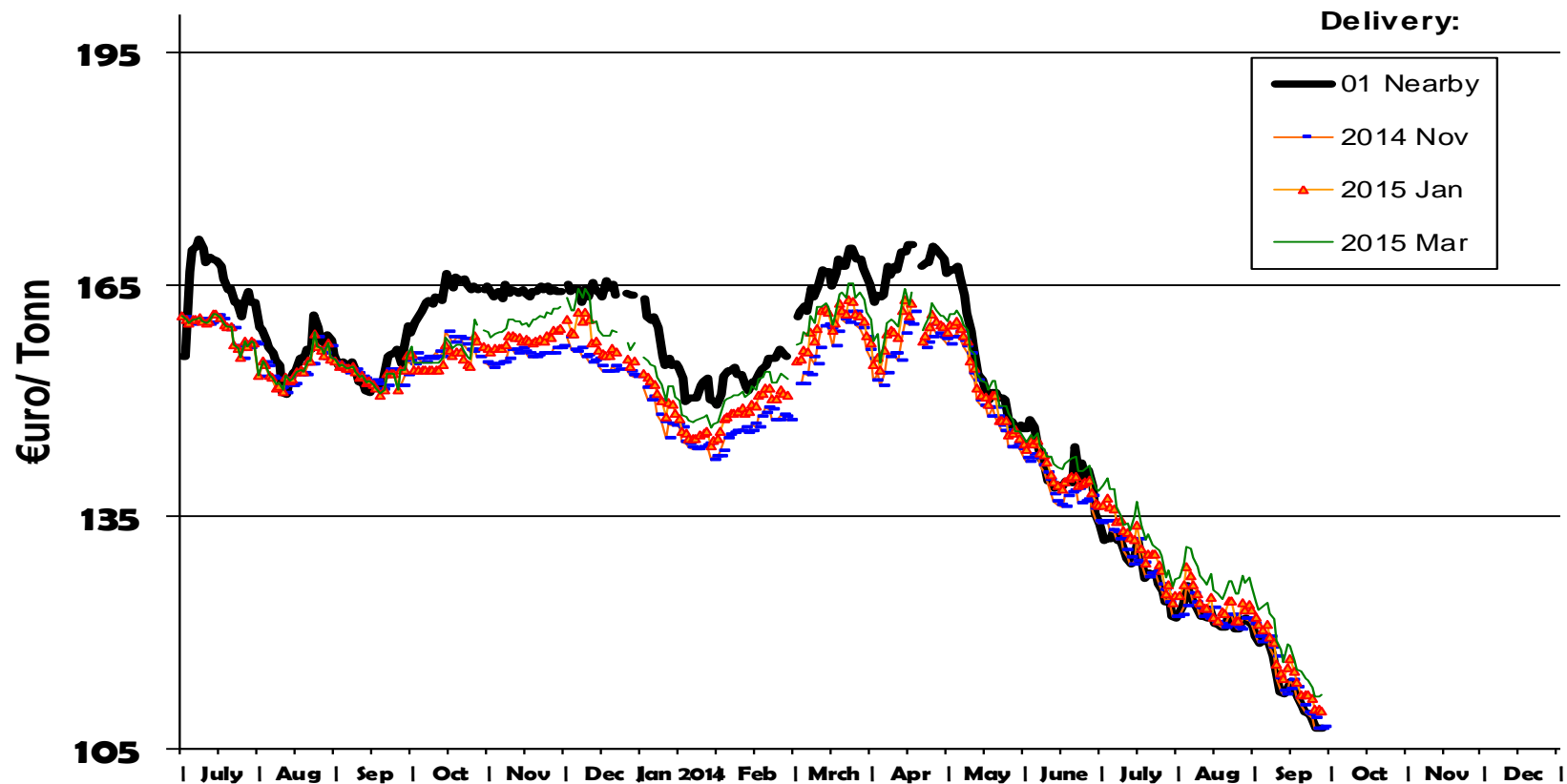


## Futures for Maize EU (Euronext)

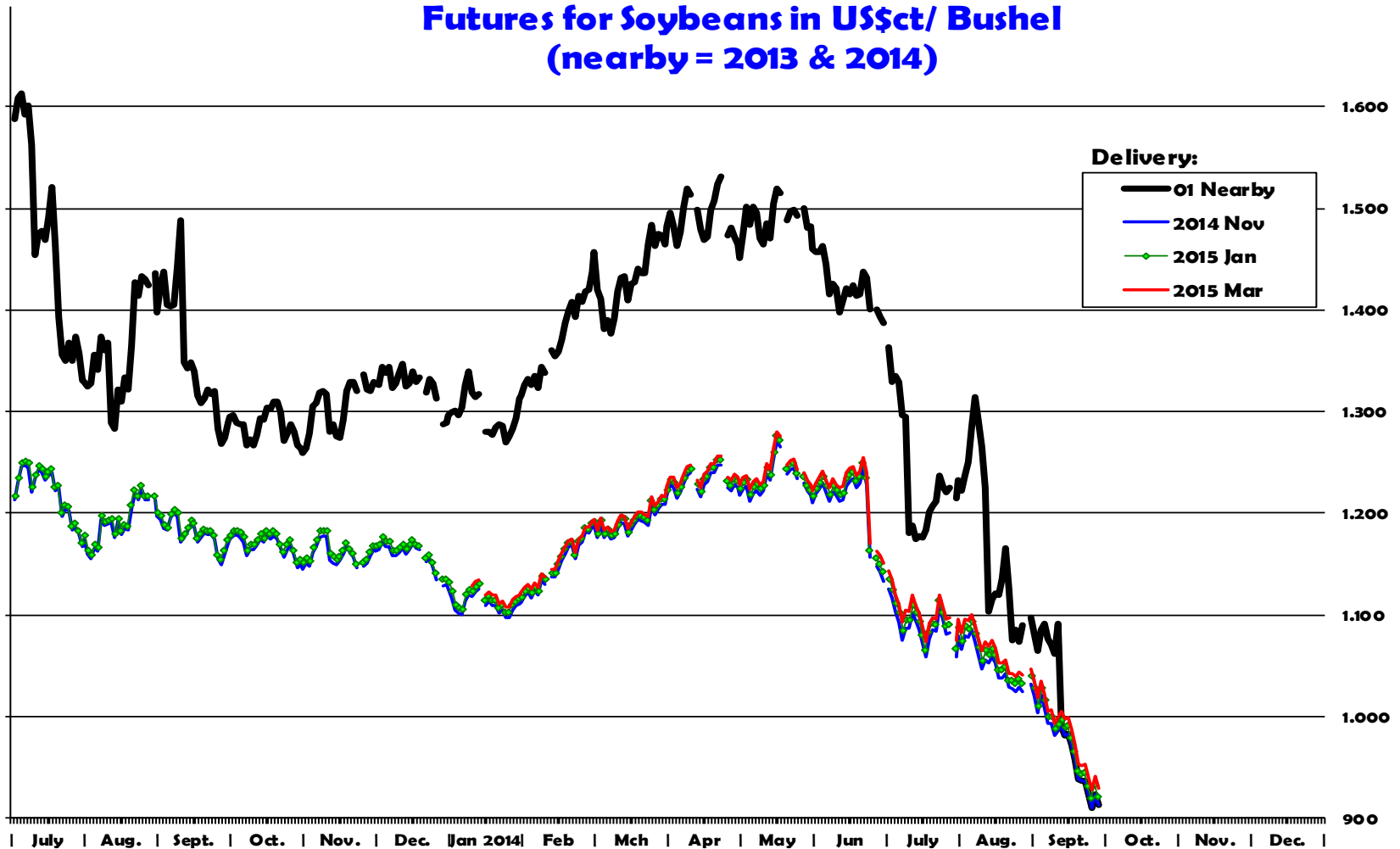
(Nearby = 2013 - 2014)



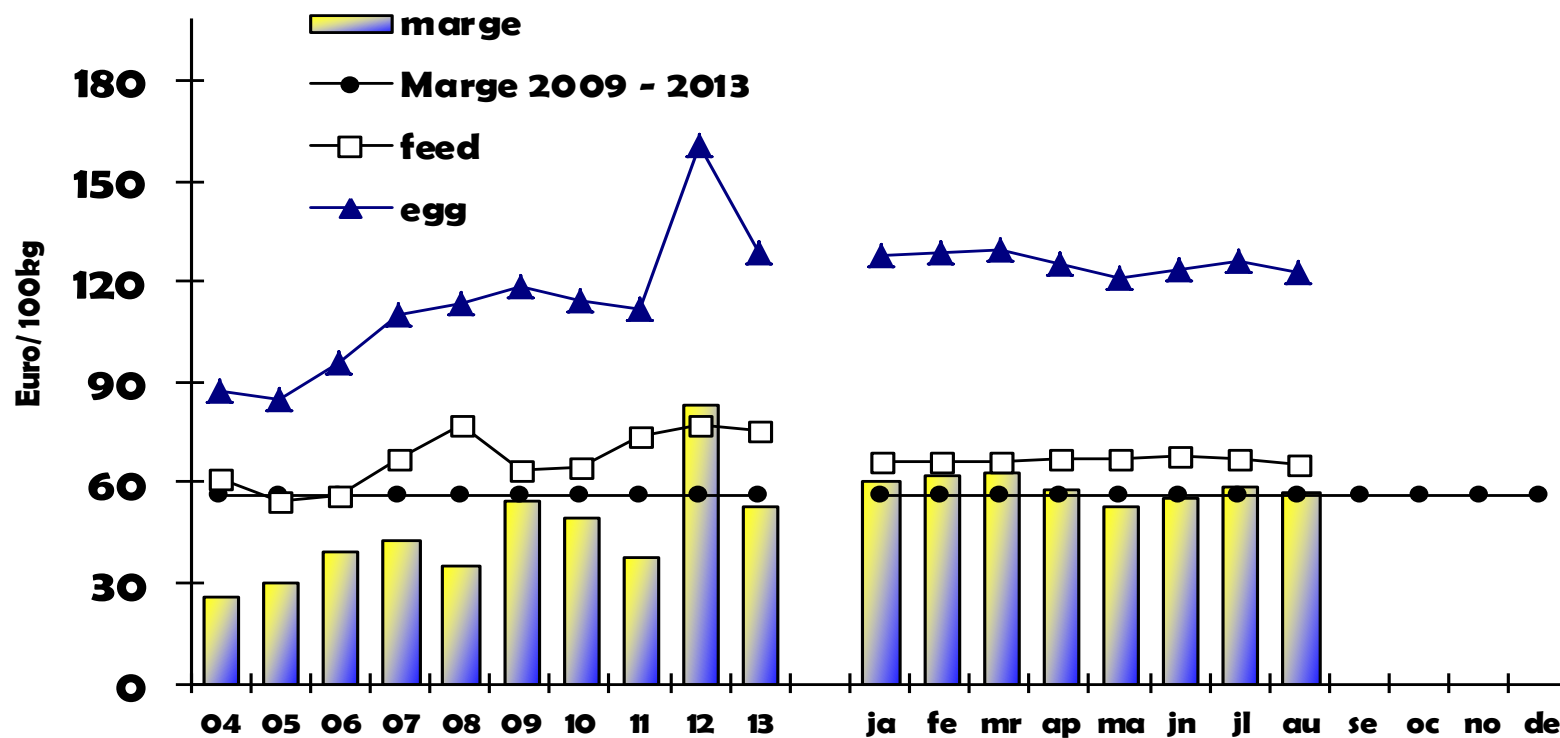
## Futures for Feed wheat EU (Euronext) (Nearby = 2013 & 2014)



## Futures for Soybeans in US\$/ Bushel (nearby = 2013 & 2014)

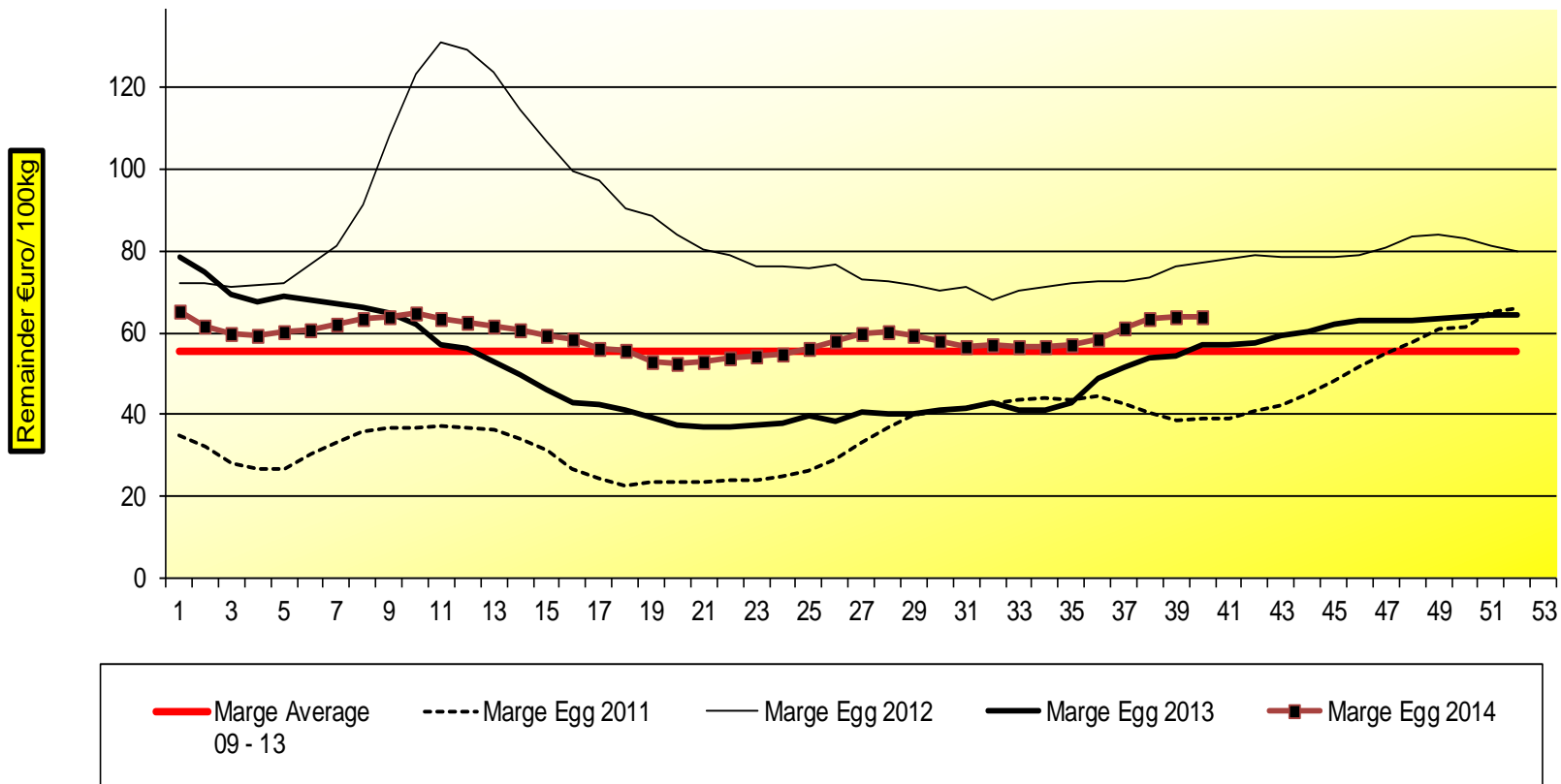


## Margin between Feed cost and Egg price in Egg production





# 100KG Egg minus feedcost for Laying Hens feedconversionrate = 2,7(2009) - 2,2(2014)



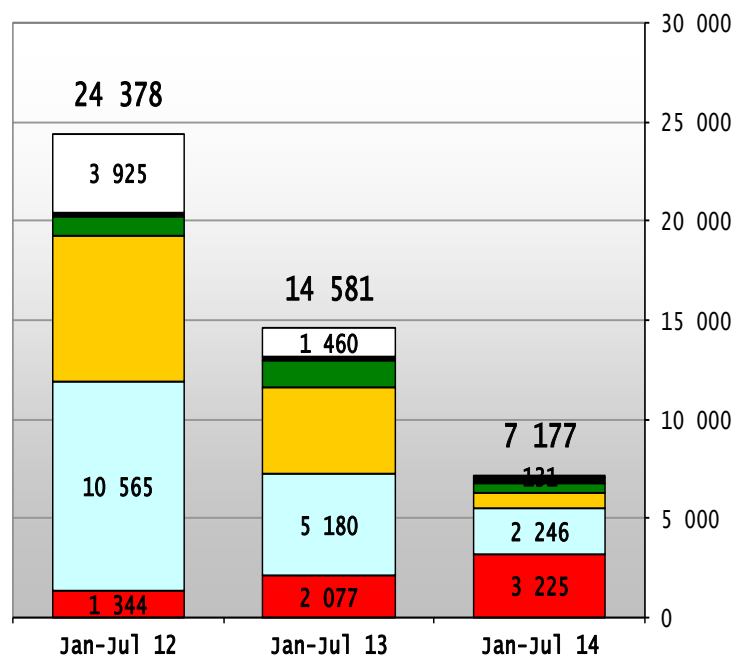
# EU Imports of Eggs:

**Trade Figures (*Comext – tonnes egg equiv.*) not incl. Hatching eggs**

	2010		2011		2012		2013		Jan-Jul 14	Compared to Jan-Jul 13	
	tonnes	%	tonnes	%	tonnes	%	tonnes	%	tonnes		%
India	3.211	9,4%	1.554	7,5%	3.657	9,7%	3.856	18,9%	3.225	44,9%	+ 55,3%
USA	14.009	40,9%	5.960	28,6%	15.183	40,2%	6.853	33,5%	2.246	31,3%	- 57%
Argentina	7.937	23,2%	8.115	39,0%	10.162	26,9%	5.734	28,0%	781	10,9%	- 82%
Norway	1.722	5,0%	1.502	7,2%	1.474	3,9%	1.969	9,6%	514	7,2%	- 62%
Switzerland	337	1,0%	342	1,6%	332	0,9%	355	1,7%	280	3,9%	+ 88%
Israel	941	2,7%	547	2,6%	1.393	3,7%	349	1,7%	100	1,4%	- 55%
Others	6.087	0,2%	2.787	0,0%	5.528	0,0%	1.338	0,0%	32	0,4%	
EXTRA EU 28	34.244		20.806		37.729		20.454		7.177		
% change			- 39%		+ 81%		- 46%		- 50,8%		

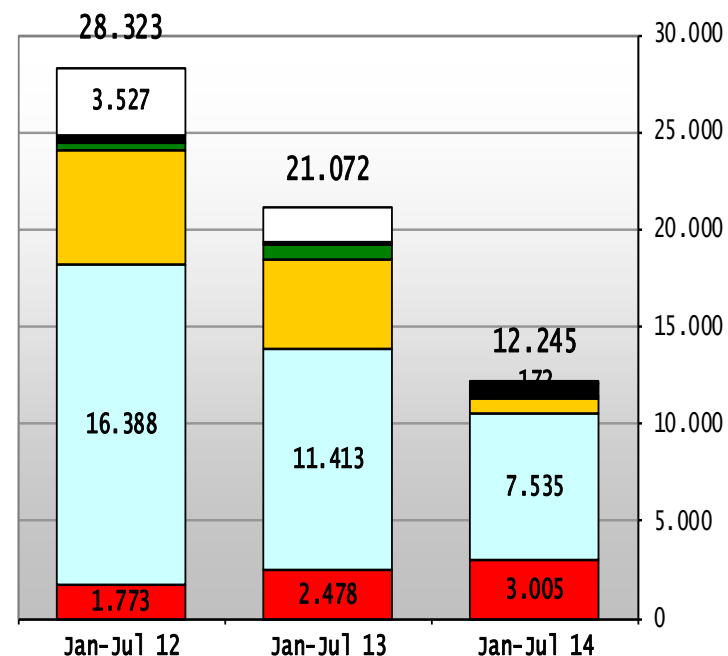
# EU Egg Imports

**Total EU Import of Eggs - not incl. Hatching eggs  
(Tonnes eggs equiv)**



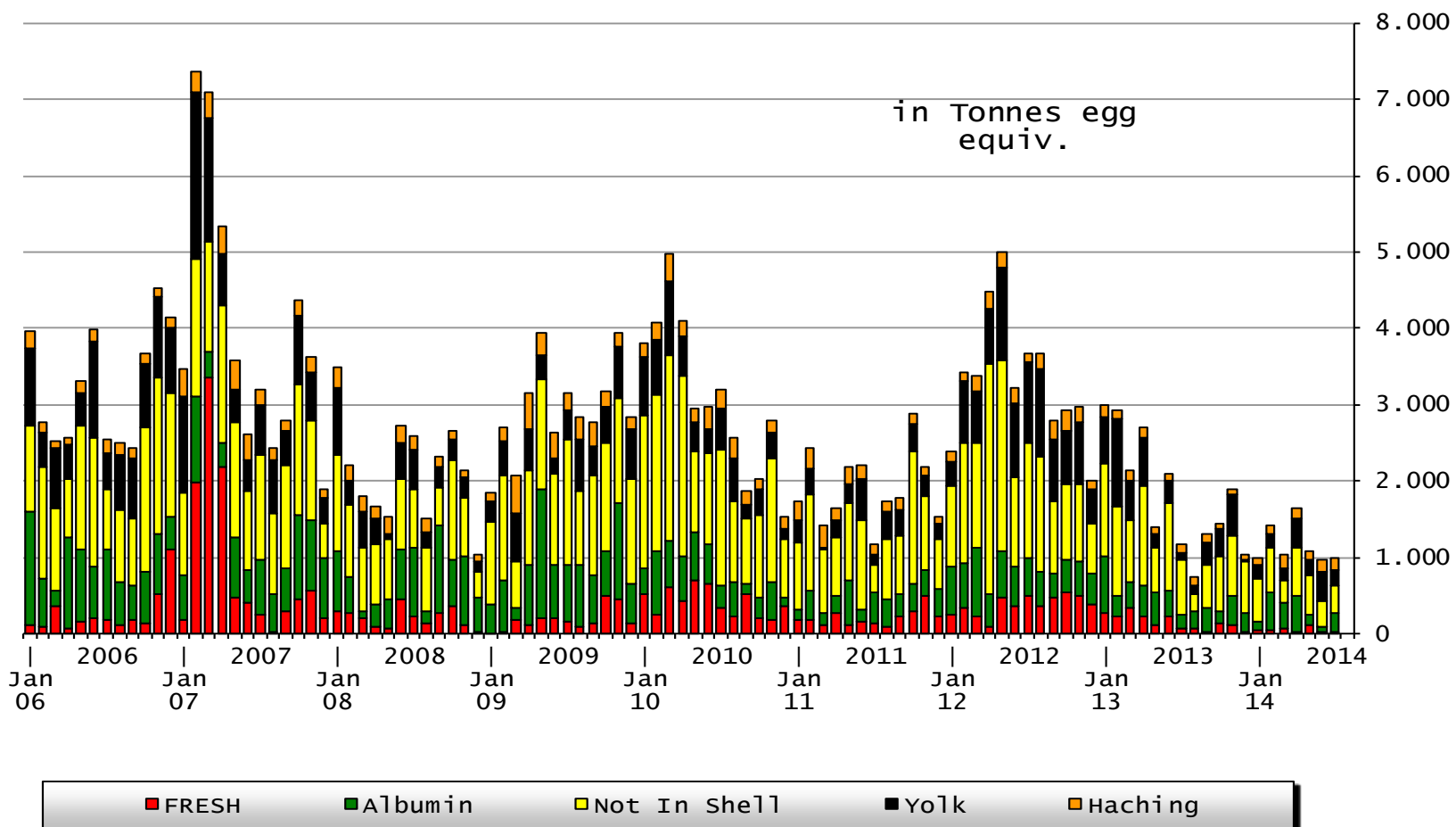
■ India ■ USA ■ Argentina ■ Norway ■ Switzerland ■ Other destinations

**Total EU Import of Eggs - not incl. Hatching eggs  
(1000 EUR)**



■ India ■ USA ■ Argentina ■ Norway ■ Switzerland ■ Other destinations

## EU-27/28 Imports of selected EGGS products (including Hatching eggs)



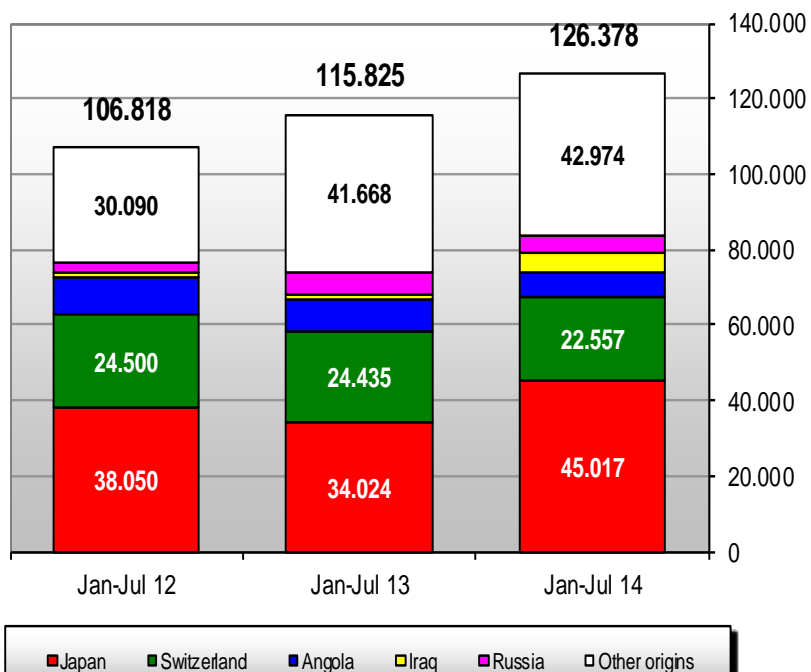
# EU Exports of Eggs:

**Trade Figures (Comext – tonnes egg equiv.) not incl. Hatching eggs**

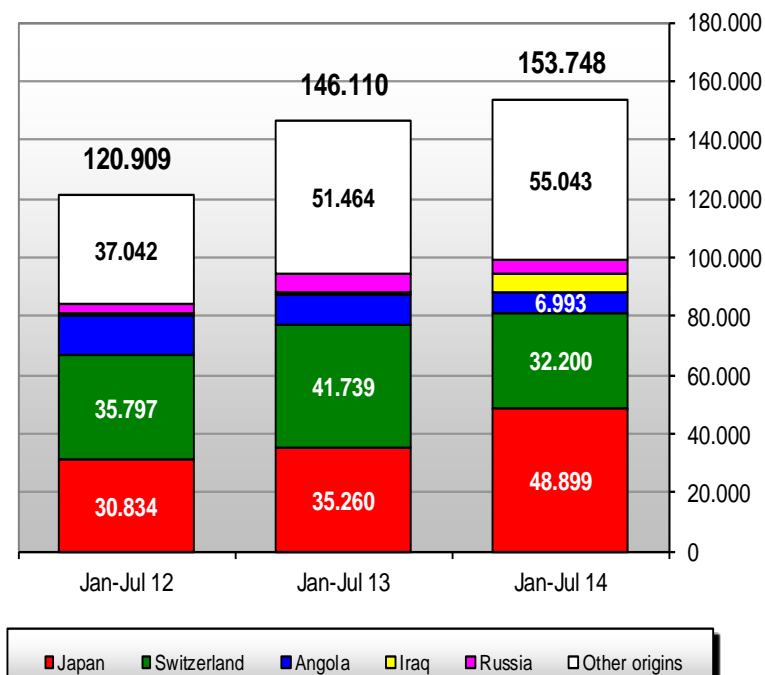
	2010		2011		2012		2013		Jan-Jul 14		Compared to Jan-Jul 13
	tonnes	%	tonnes	%	tonnes	%	tonnes	%	tonnes	%	
Japan	52.923	29%	66.357	31%	66.938	36%	64.527	30%	45.017	36%	+ 32,3%
Switzerland	45.072	25%	42.168	19%	41.893	23%	42.086	20%	22.557	18%	- 8%
U.A.Emirates	5.888	3%	8.262	4%	1.674	1%	10.450	5%	3.982	3%	- 13%
Iraq	20	0%	1.552	1%	1.139	1%	7.741	4%	5.210	4%	+++
Russia	5.293	3%	4.947	2%	5.982	3%	10.539	5%	4.034	3%	- 35%
Angola	10.414	6%	17.524	8%	17.109	9%	12.906	6%	6.586	5%	- 23%
Equat. Guinea	1.487	1%	1.945	1%	1.632	1%	2.215	1%	1.495	1%	- 2%
Secr.Extra	2.164	1%	1.148	1%	2.638	1%	8.262	4%	1.885	1%	- 50%
Taiwan	7.145	4%	7.941	4%	4.626	2%	3.412	2%	1.703	1%	- 27%
Thailand	6.180	3%	7.254	3%	6.409	3%	5.919	3%	3.001	2%	- 14%
Israel	1.308	1%	2.654	1%	1.060	1%	936	0%	1.628	1%	+++
Others	43.825	24%	55.353	25%	34.694	19%	45.623	21%	29.280	23%	
EXTRA EU 28	181.719		217.105		185.793		214.617		126.378		
% change			+ 19%		- 14%		+ 16%		+ 9,1%		

# EU Egg Exports

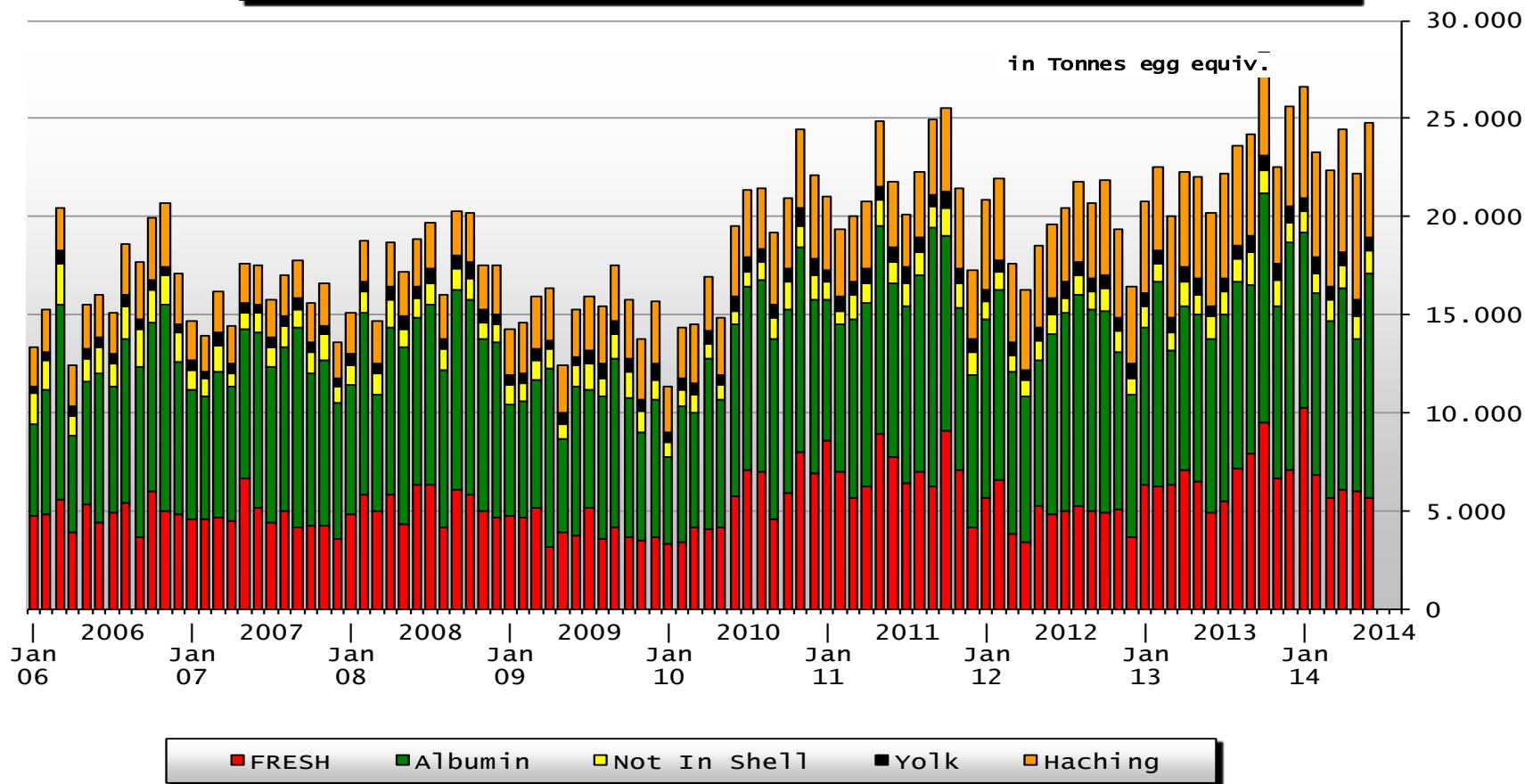
**Total EU Export of Eggs**  
not incl. hatching eggs (T. eggs equiv.)



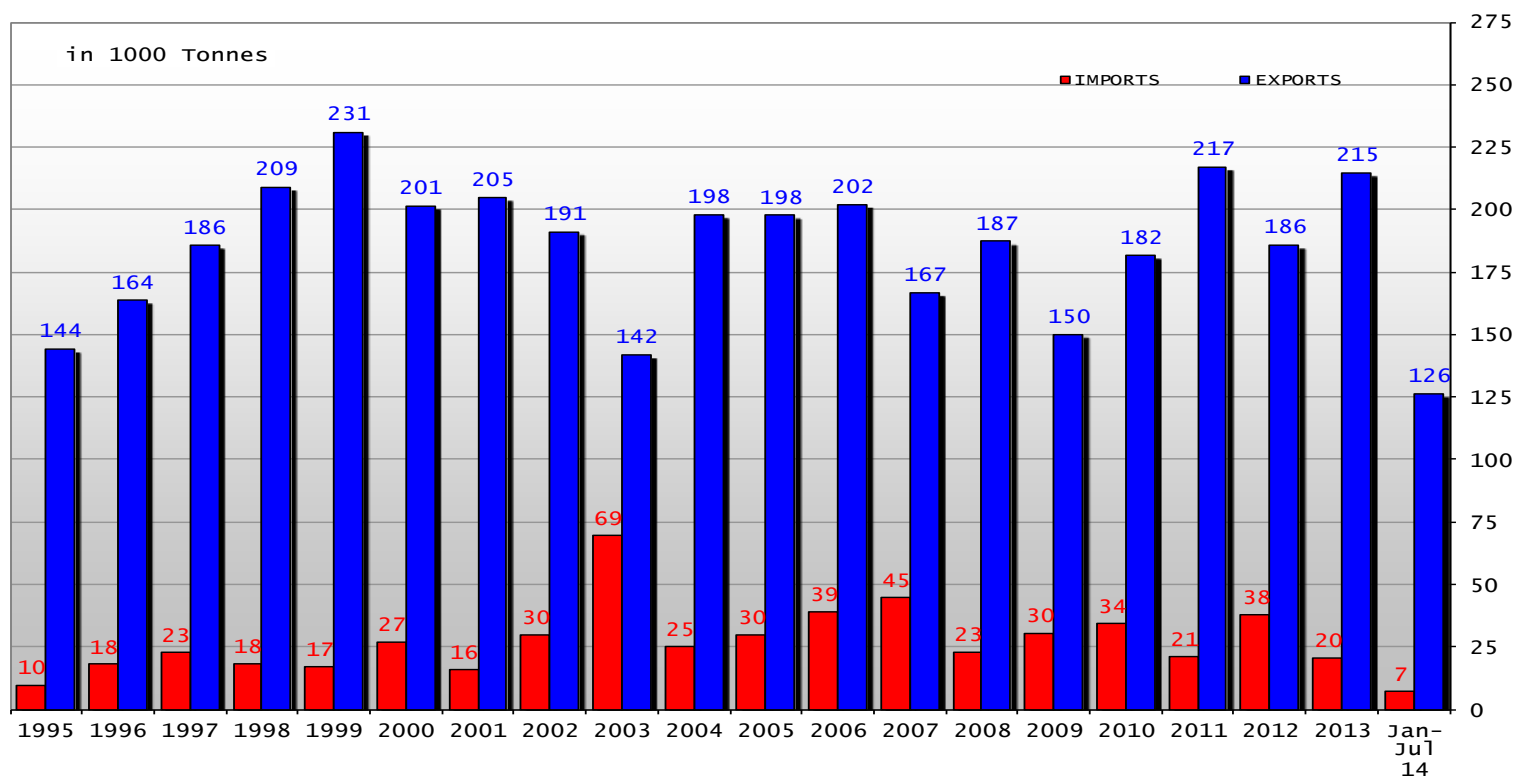
**Total EU Export of Eggs**  
not incl. hatching eggs (1000 EUR)



## EU-27/28 Exports of selected EGGS products (including Hatching eggs)



# EU Egg Trade Balance (not including Hatching eggs)

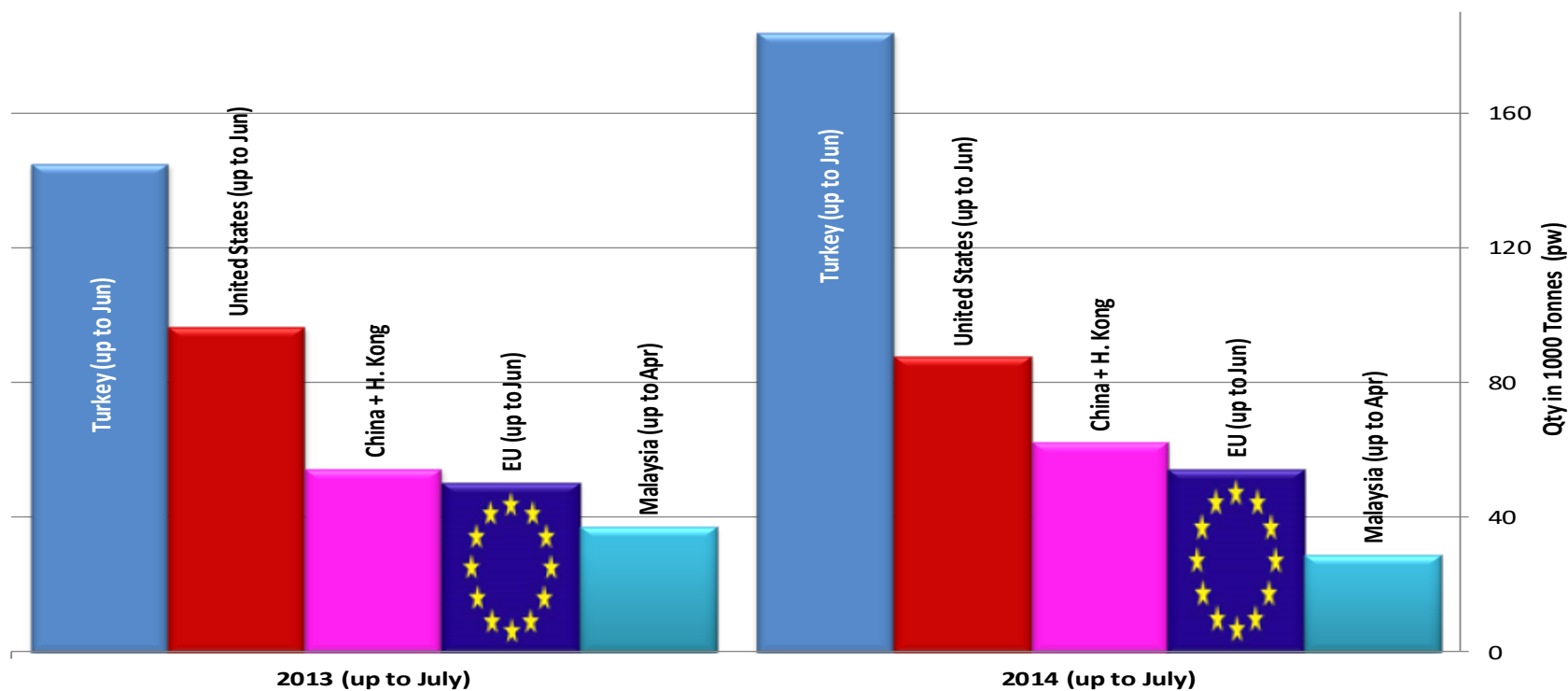




## Main Exporters of EGGS Products (up to July)

Source : GTA & Eurostat

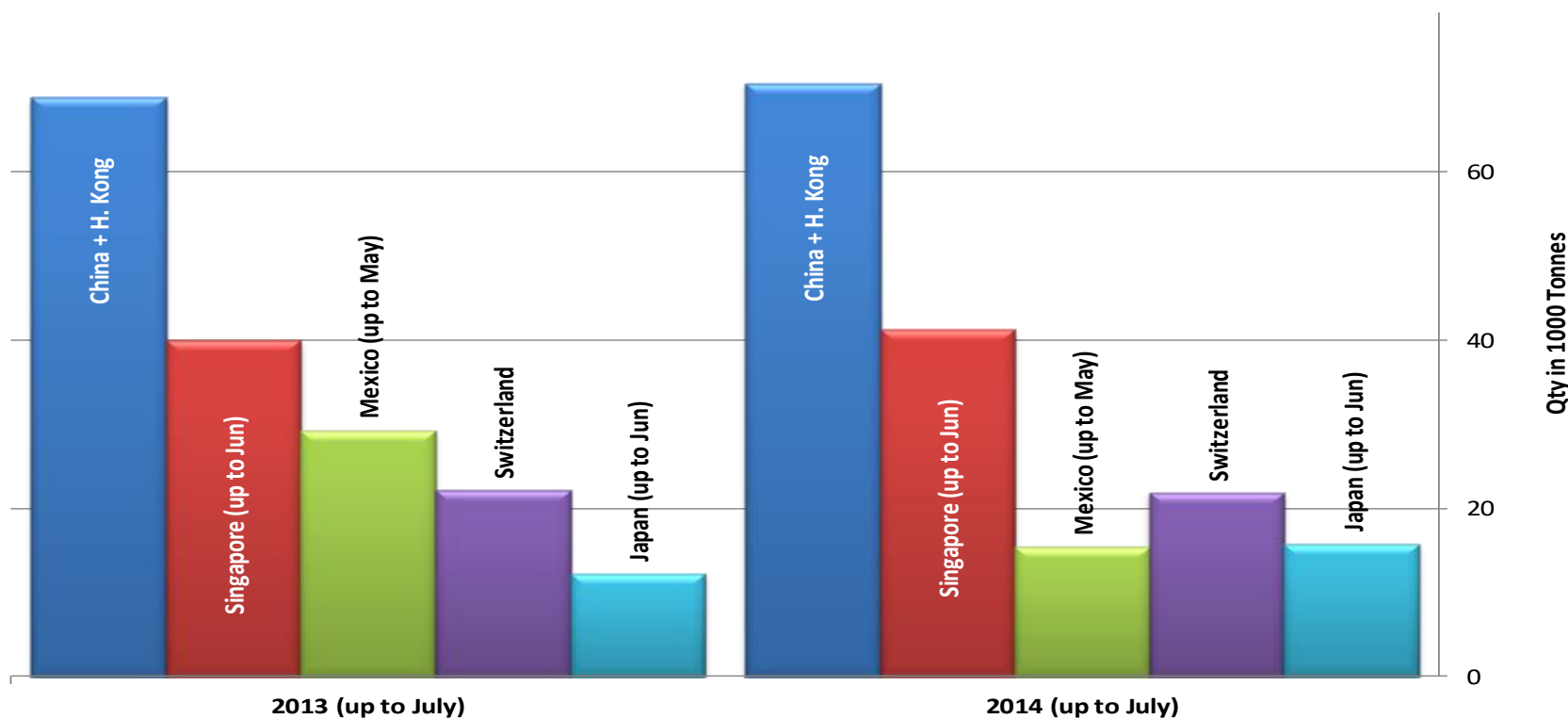
(excl. Eggs for hatching)



## Main Importers of EGGS Products (up to July)

Source : GTA & Eurostat

(excl. Eggs for hatching)



## Where to find data:

- [http://ec.europa.eu/agriculture/markets/index\\_en.htm](http://ec.europa.eu/agriculture/markets/index_en.htm)
- Click on link: Eggs
- Click on link: Presentations and prices  
*(righthand side under: in this chapter)*
- Choose the item (link) you want