



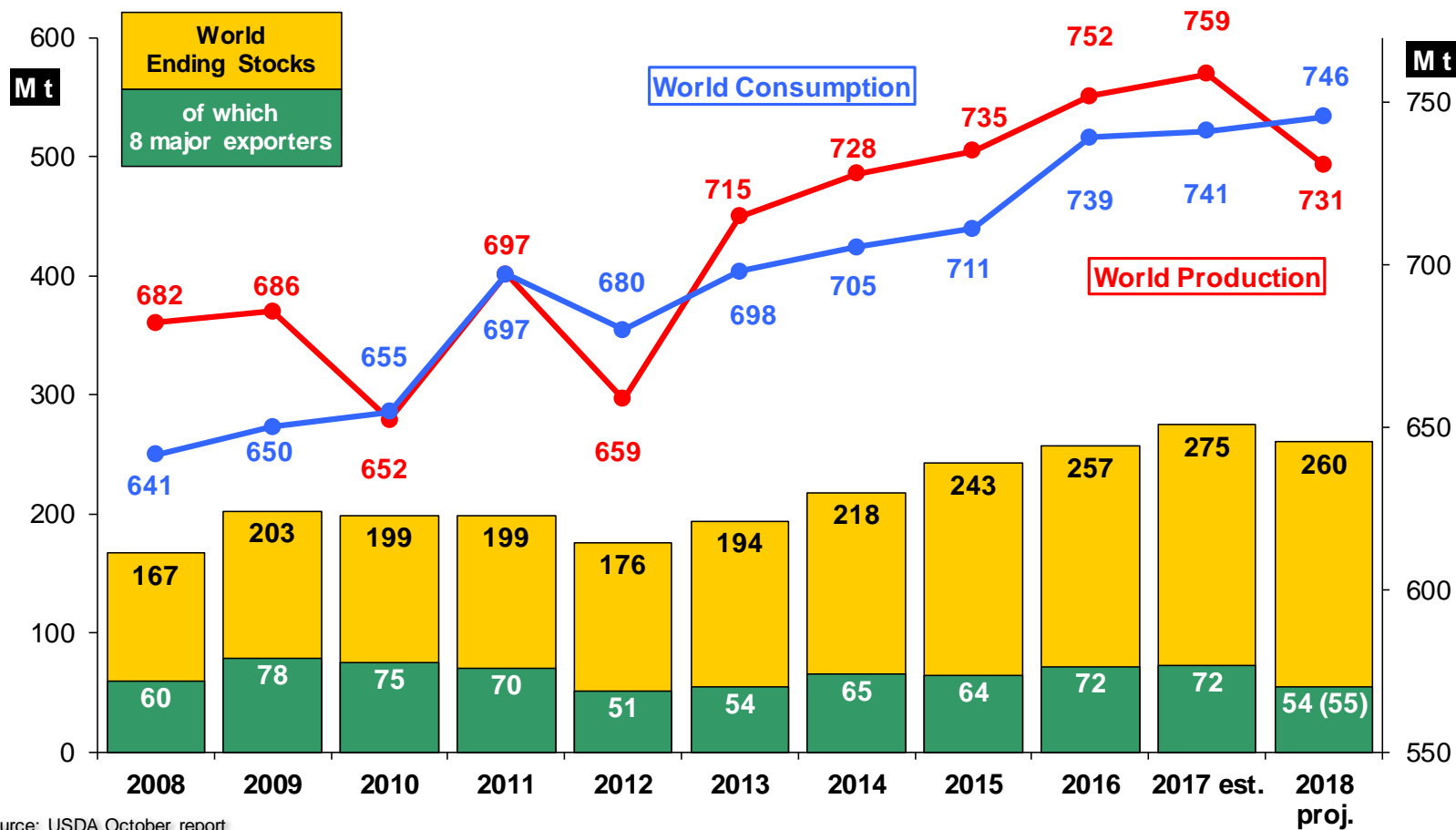
Market Situation of Feed

**DG AGRI G.4.
Civil Dialogue Group on Animal Products
Pig Meat Sector**

19 October 2018

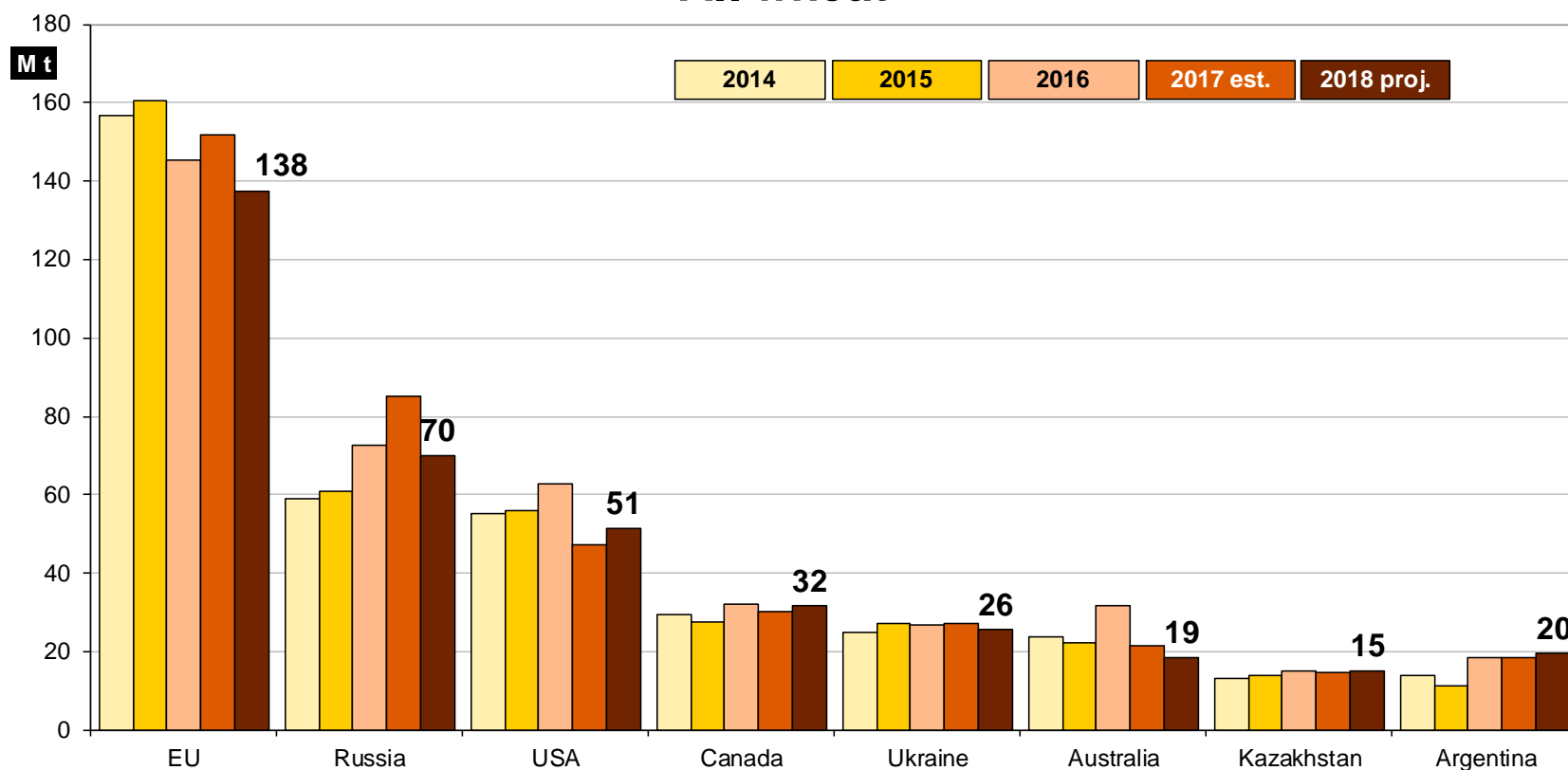
World Cereals Forecasts and Prices

World wheat: USDA

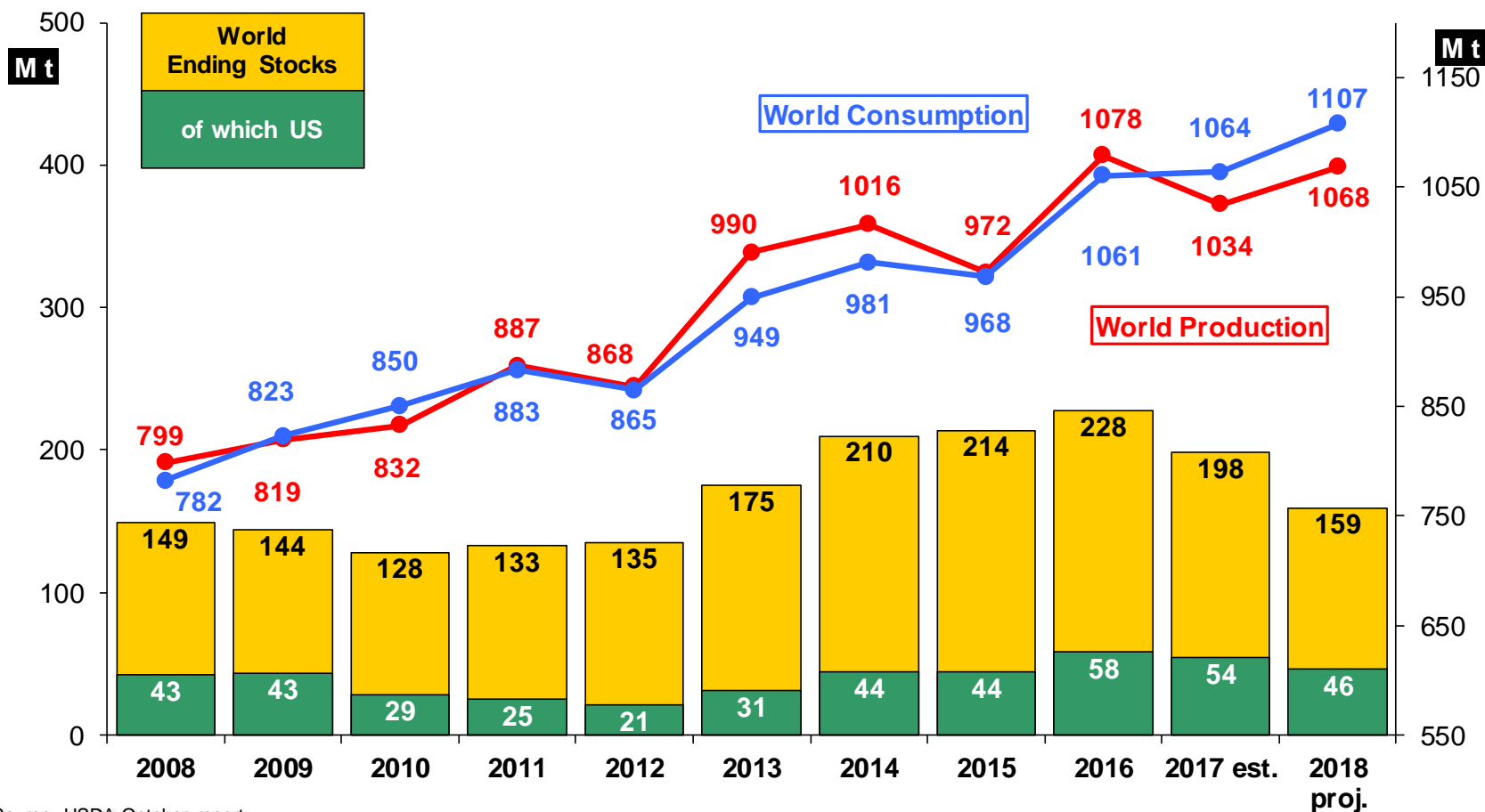


USDA: Wheat production forecast

All wheat



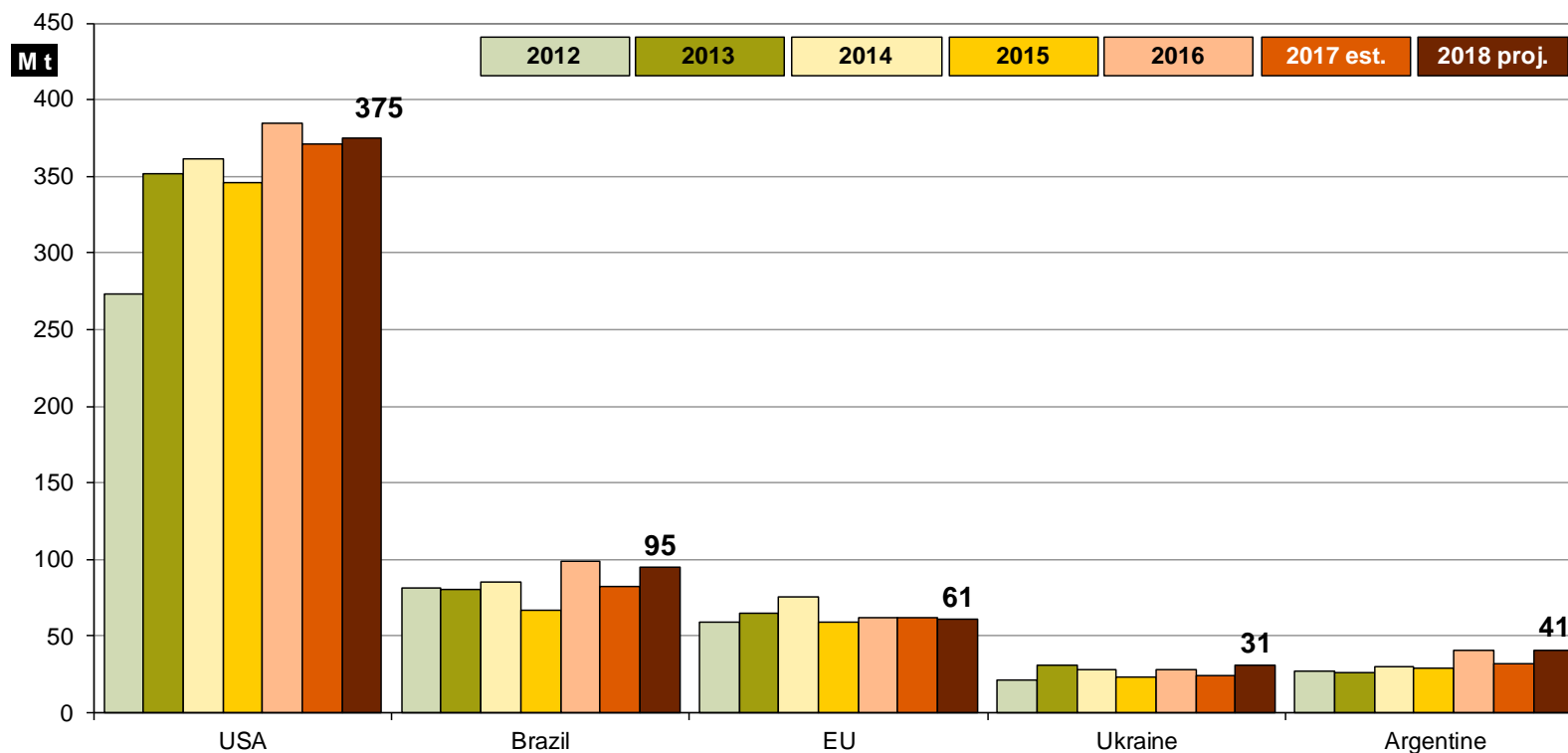
World maize: USDA



Source: USDA October report

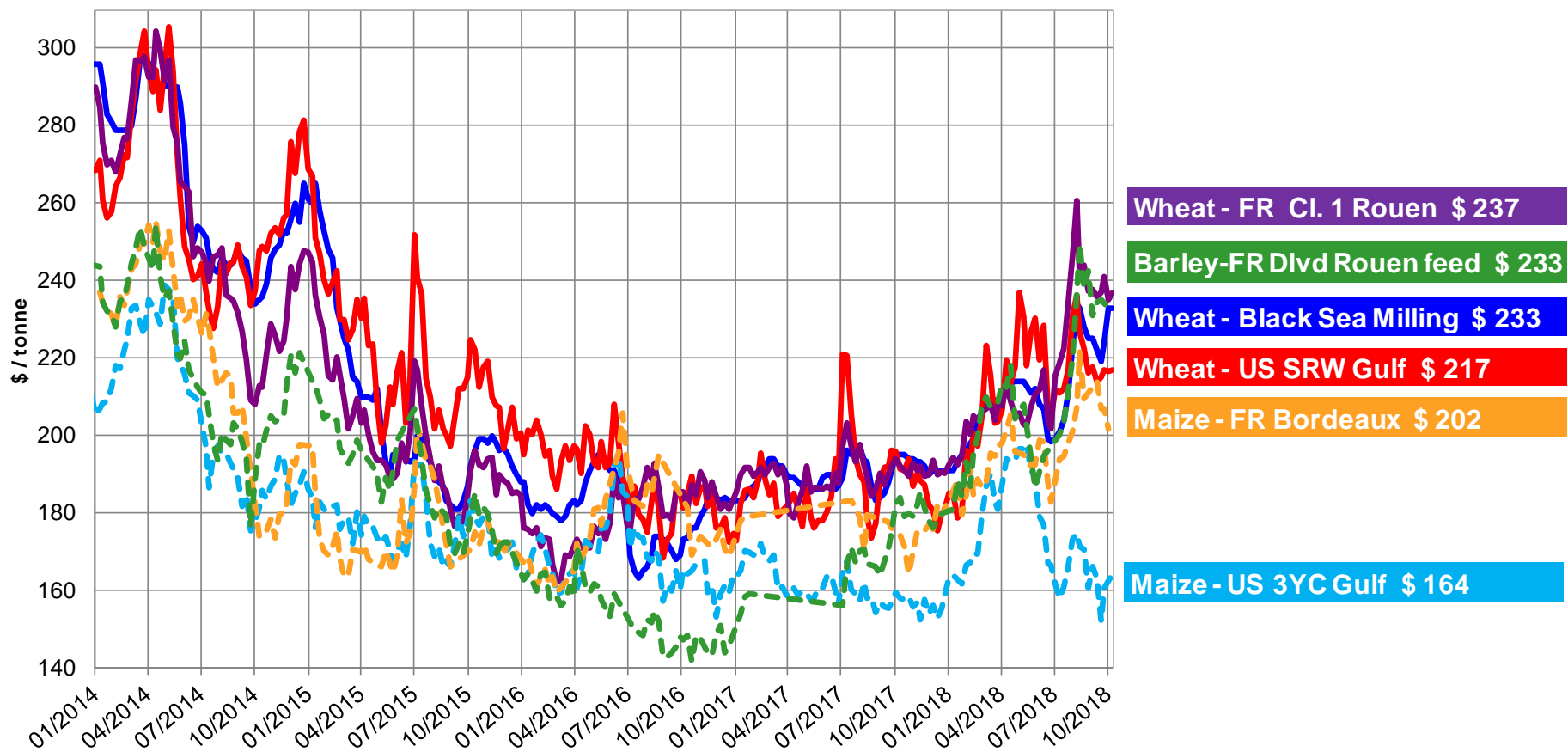
USDA: maize production forecast

Maize

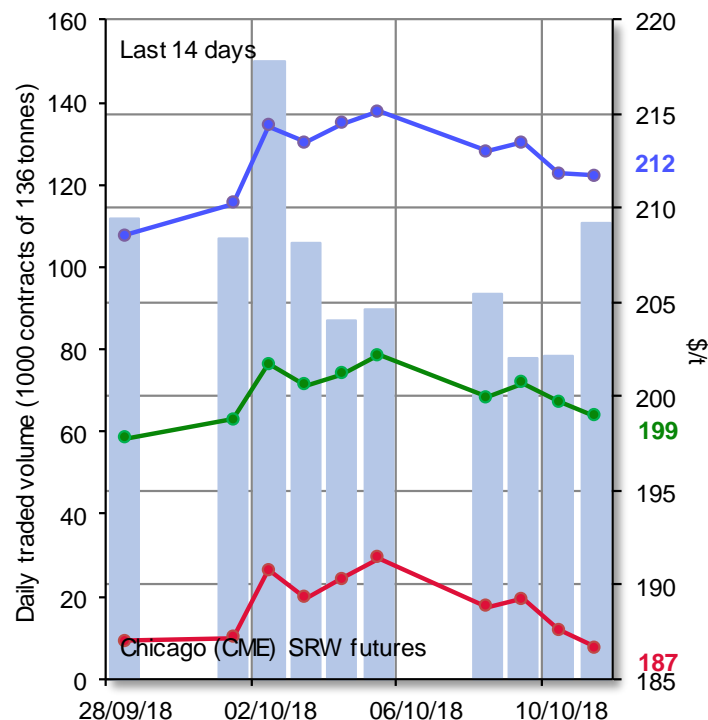
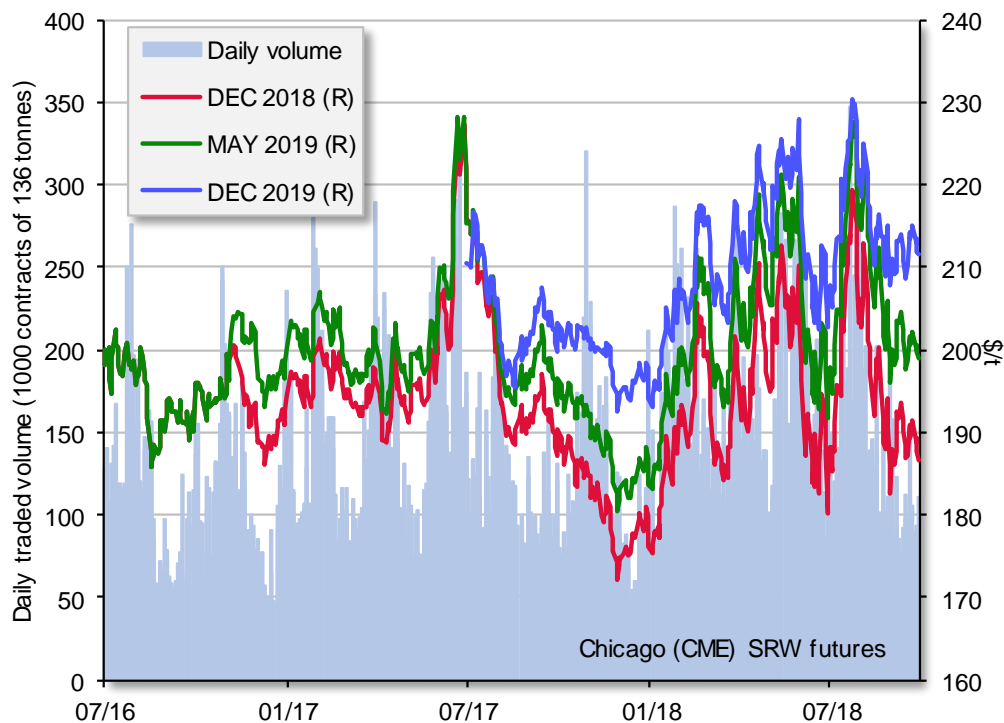


Source: USDA October report

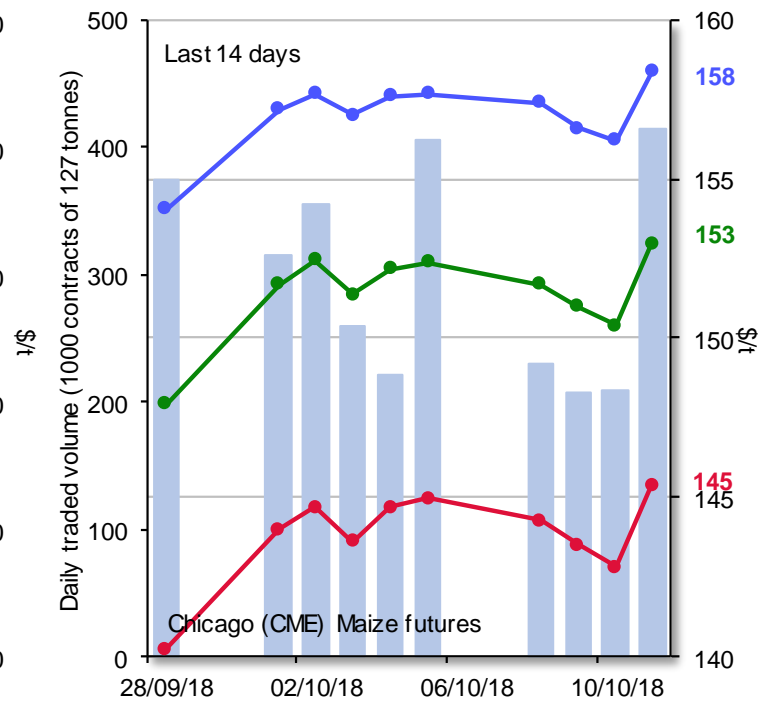
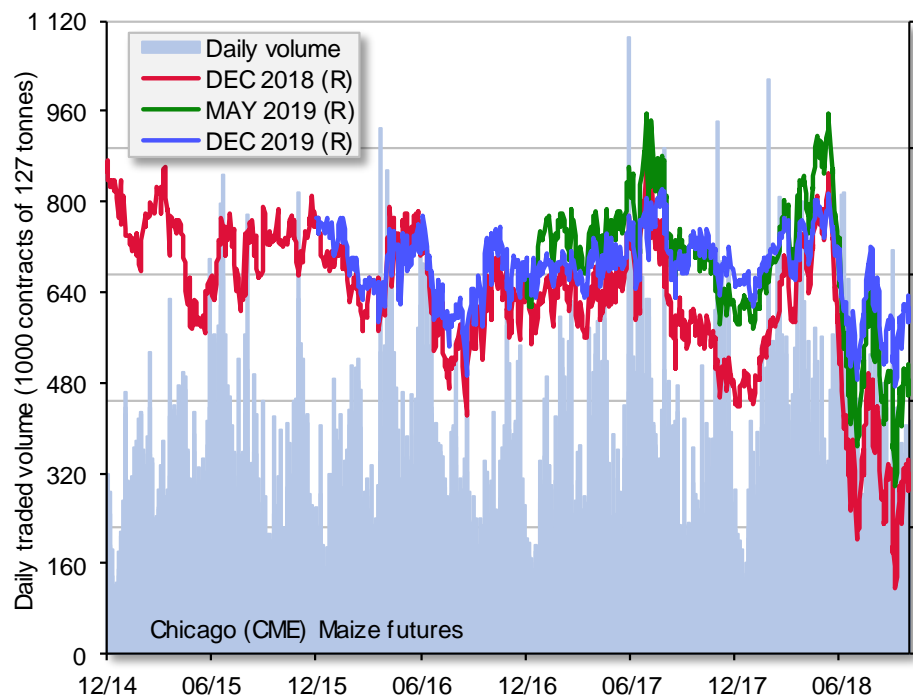
World cereal prices (\$/t)



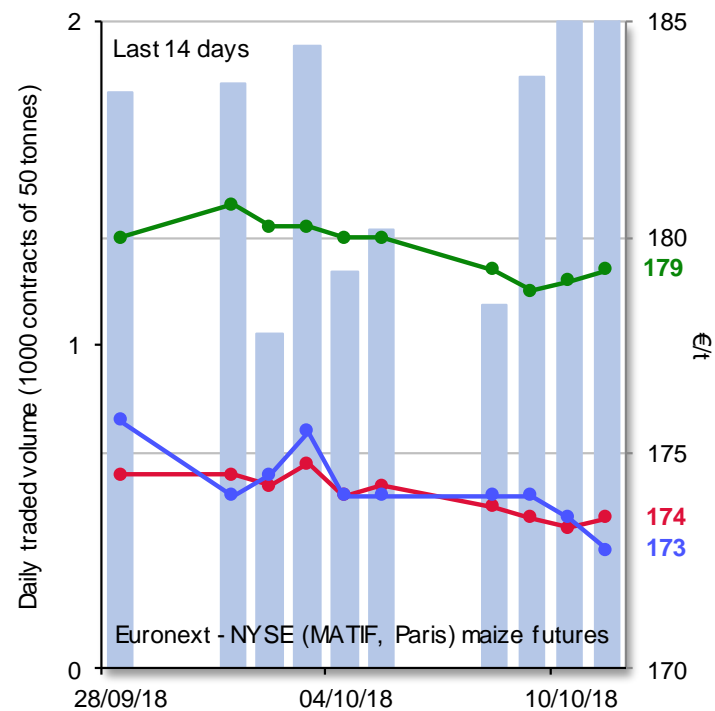
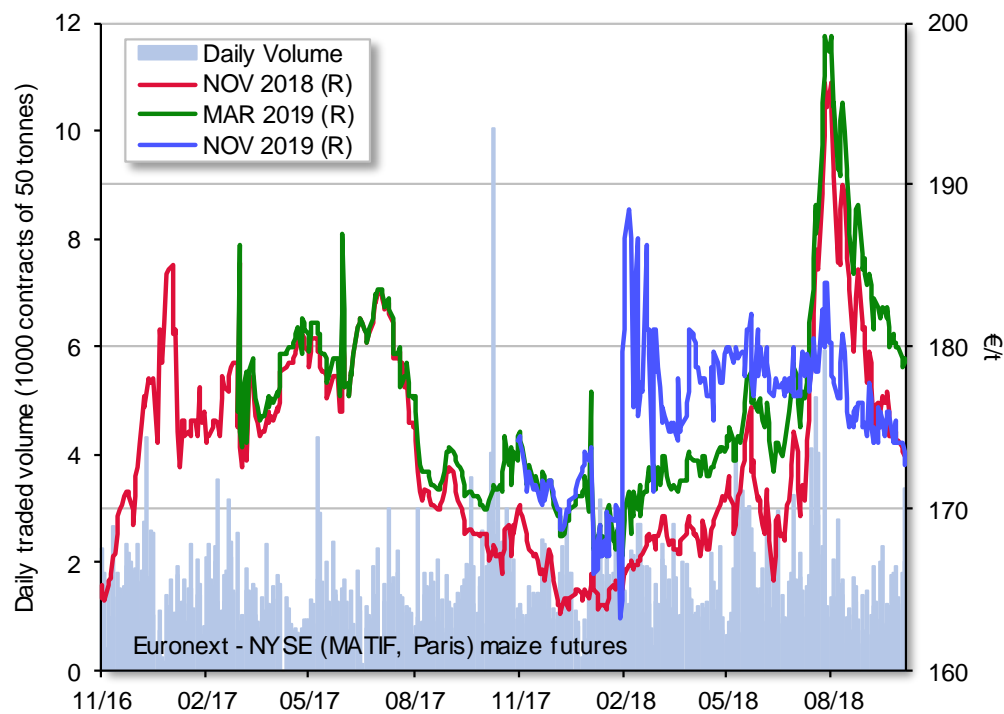
US CME SRW wheat futures



CME maize futures



EU maize futures



EU Cereals Balance Sheet and Forecasts

Marketing year 2018/19

EU 28- 2018 Production Forecasts

EVOLUTION OF THE EU CEREALS USABLE PRODUCTION					
Million tonnes	2016/2017	2017/2018	2018/2019 Aug fcst	2018/2019 Sept fcst	% change 2017/2018
TOTAL	296,7	307,0	287,1	284,3	-7,4
Soft wheat	133,9	142,0	128,8	128,7	-9,4
Durum wheat	9,6	9,3	8,8	8,6	-7,5
Barley	59,4	58,6	56,2	56,4	-3,8
Maize	62,8	65,5	64,2	61,9	-5,5
Rye	7,2	7,2	6,5	6,3	-12,5
Oats	8,0	8,1	8,1	7,8	-3,7

Sources : DG AGRI - G4

EU 28 Cereals Balance Sheet

Thousand metric tonnes

LAST UPDATED: 30/08/2018	2018/19 (forecast)									
	Common wheat	Barley	Durum wheat	Maize	Rye	Sorghum	Oats	Triticale	Others	TOTAL CEREALS
Beginning stocks	18.101	4.821	2.900	24.086	597	373	449	1.155	938	53.419
Usable production	128.733	56.375	8.557	61.875	6.286	766	7.793	9.624	4.340	284.347
<i>Area (thousand ha)</i>	22.915	12.529	2.491	8.205	1.953	148	2.767	2.544	1.595	55.147
<i>Yield (tonnes/ha)</i>	5,6	4,5	3,4	7,5	3,2	5,2	2,8	3,8	2,7	5,2
Imports (from third countries)	4.000	500	2.057	16.000	150	163	5		158	23.032
Total supply	150.834	61.696	13.514	101.961	7.032	1.302	8.246	10.779	5.435	360.798
Total domestic use	118.822	48.973	9.690	77.807	6.576	875	7.722	10.631	4.486	285.581
Human consumption	48.134	363	8.056	5.400	3.000	156	1.152	52	23	66.336
Seed	4.788	2.131	500	407	406	29	449	543	71	9.324
Industrial uses	10.800	9.078	95	11.700	1.300		102	445	102	33.621
<i>of which bioethanol/biofuel</i>	4.665	437		6.500	700			344	14	12.659
Animal feed	54.200	37.000	1.000	59.700	1.800	690	5.950	9.500	4.250	174.090
Losses	900	400	40	600	70		70	90	40	2.210
Exports (to third countries)	20.000	8.000	1.169	2.671	147	3	208	2	8	32.207
Total use	138.822	56.973	10.859	80.478	6.722	877	7.930	10.632	4.494	317.789
Ending stocks**	12.011	4.723	2.654	21.483	310	425	316	146	941	43.010
Change in stocks**	-6.090	-98	-246	-2.603	-287	51	-133	-1.008	4	-10.409

* Marketing year: from July to June

** At the end of the marketing year



EU BALANCE SHEET 2018/19

- Further decrease of total EU cereals area:
 - (55.1 million ha; -0.6% y/y)
- Production forecast:
 - below average (283.4 million tonnes; -7.4% y/y)
 - milling wheat quality satisfactory (except in South East)
 - Malting barley quality disappointing (North & Central EU)
- Slight decrease of the total exports y/y: 1.3 million tonnes
- Decrease of ending stocks y/y: 10 million tonnes

EU cereals trade 2018/19 (update of Situation at 08/10/2018)

- **Imports:** 6m t (5.5m t last year; 3.8m t two years ago)

➤ 1.15m t soft wheat	↑ +35% y/y
➤ 0.15m t durum wheat	↓ -73% y/y
➤ 4.5m t maize	↑ +20% y/y
➤ 0.06m t barley	↓ -78% y/y

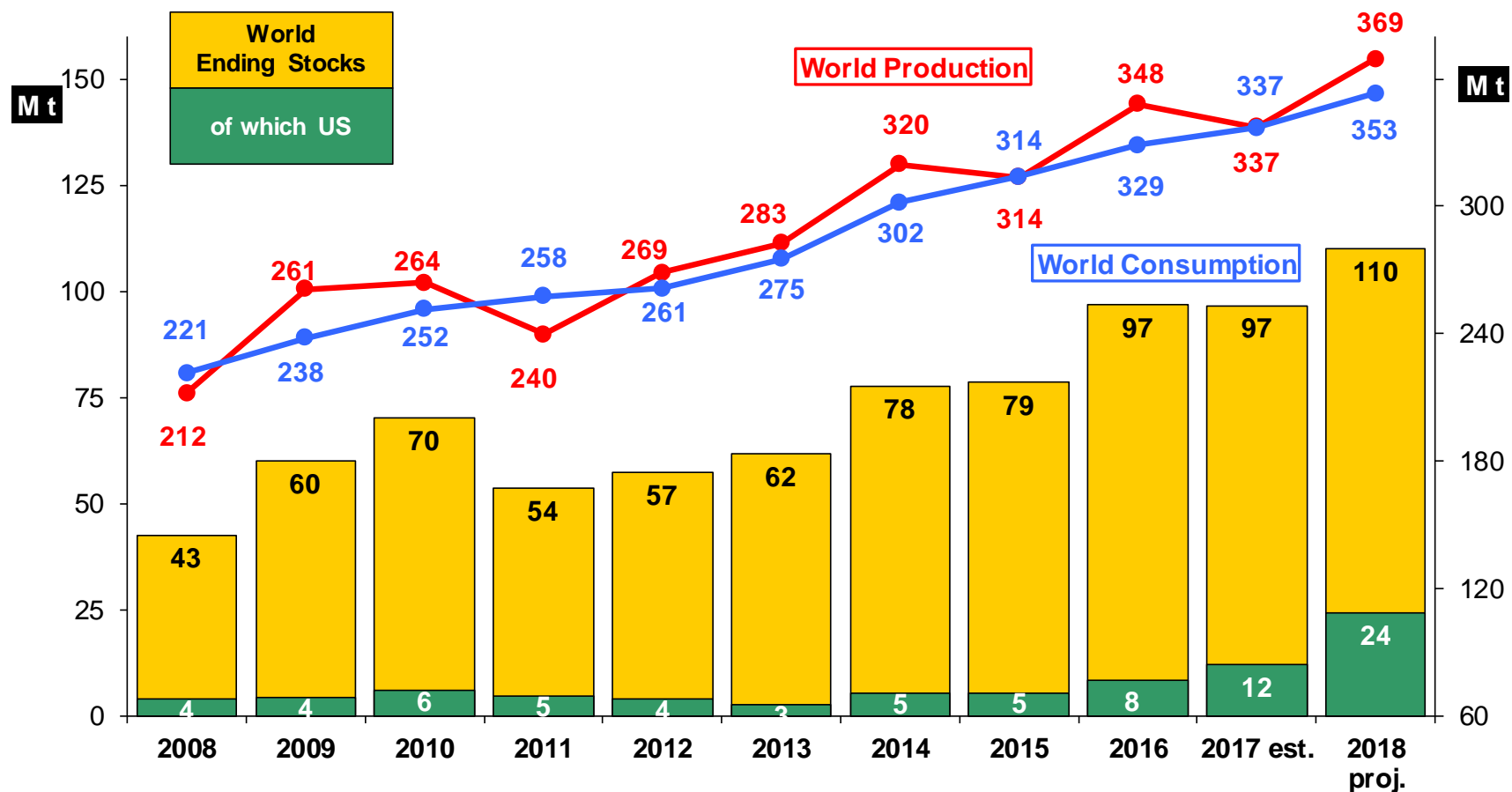
- **Exports:** 7.3m t (9.3m t last year; 11.2m t two years ago)

➤ 4.7m t soft wheat	↓ -25% y/y
➤ 1.5m t barley	↓ -11% y/y
➤ 0.15m t durum wheat	↓ -29% y/y
➤ 0.18m t maize	↓ -30% y/y

- So far, the EU is a net cereal exporter of 1.3m t, against 3.8m t last year and 7.4m t two years ago.

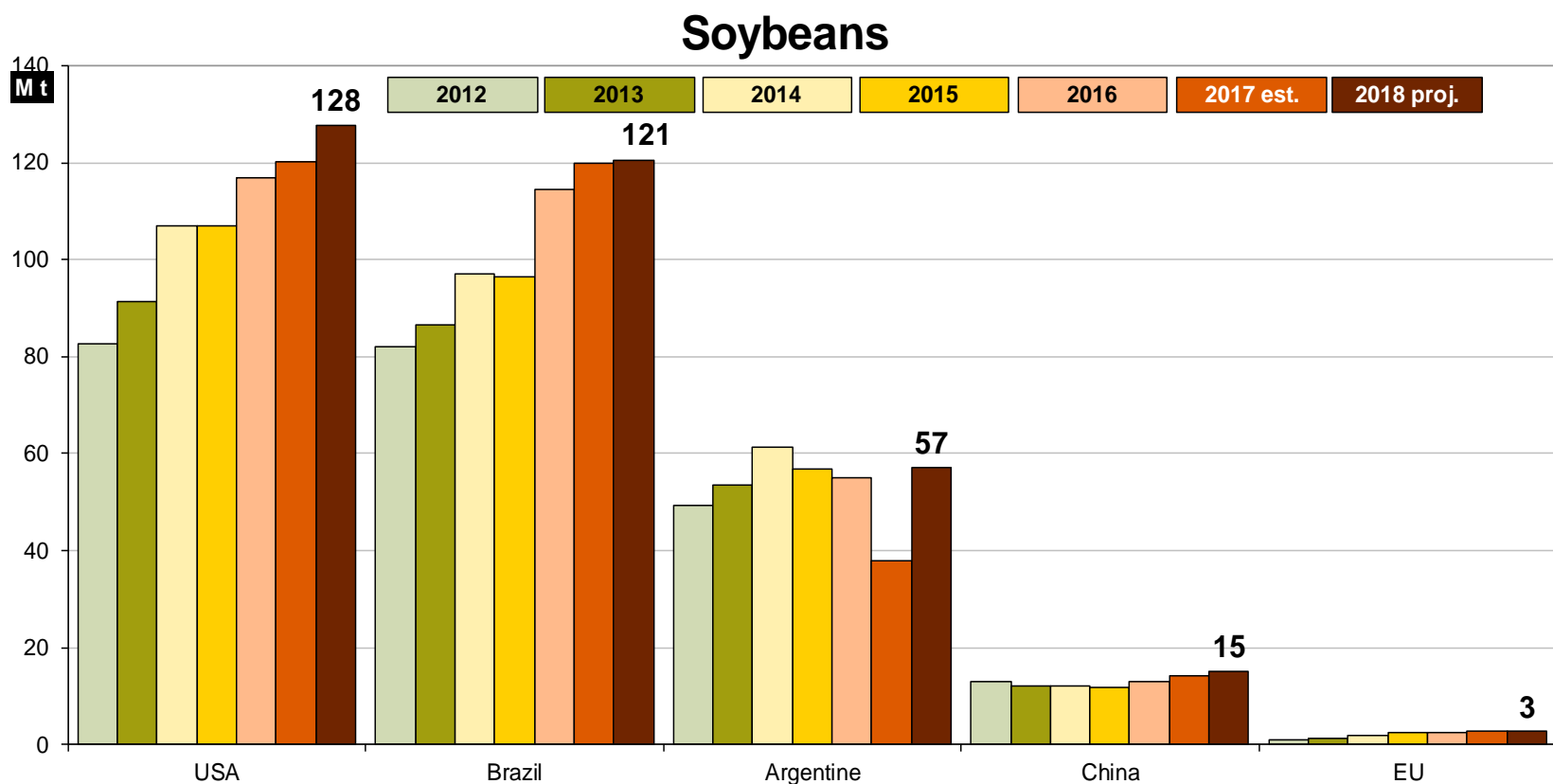
World Oilseeds Forecasts and Prices

World soya: USDA



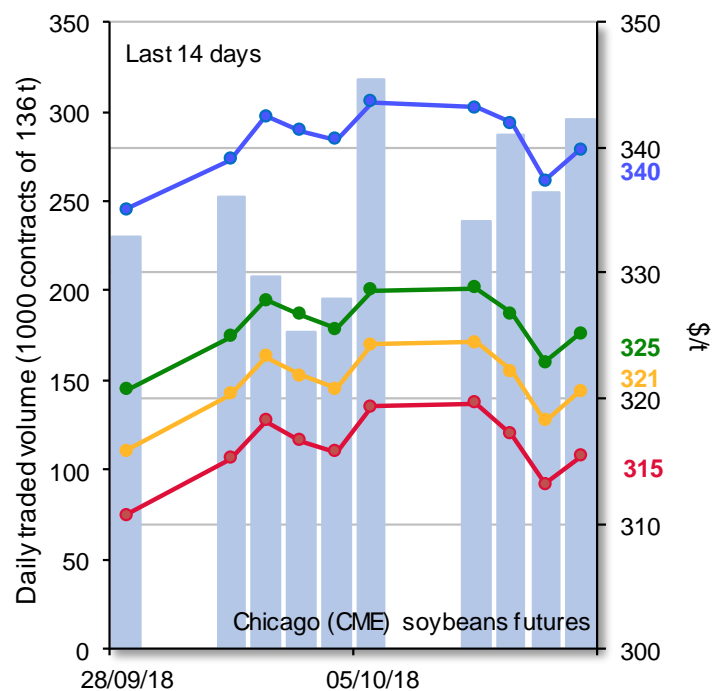
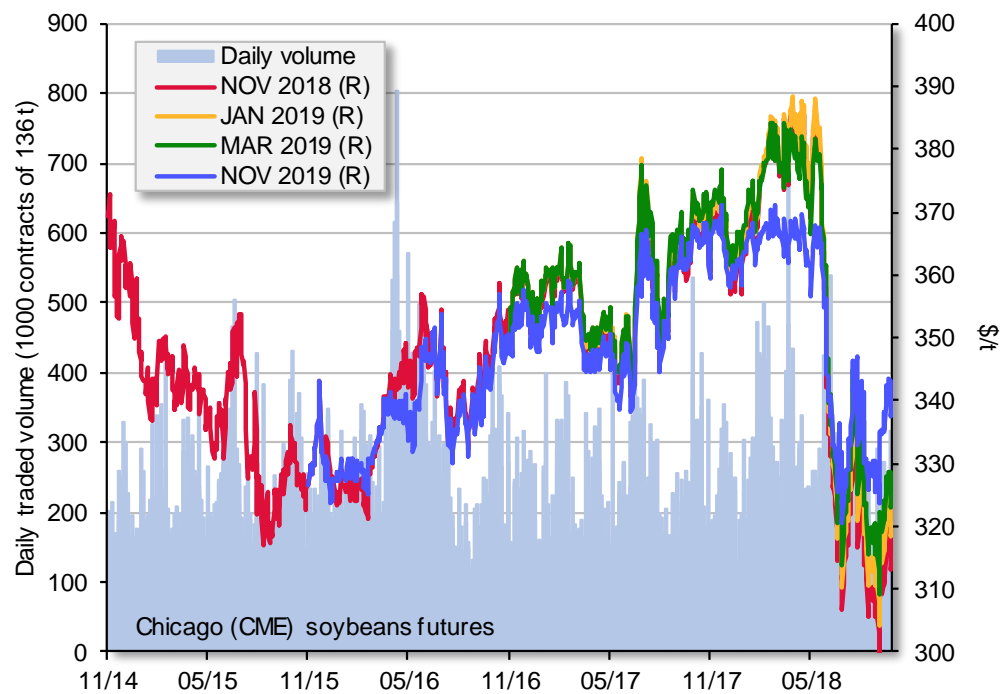
Source: USDA October report

USDA: soybeans production forecast

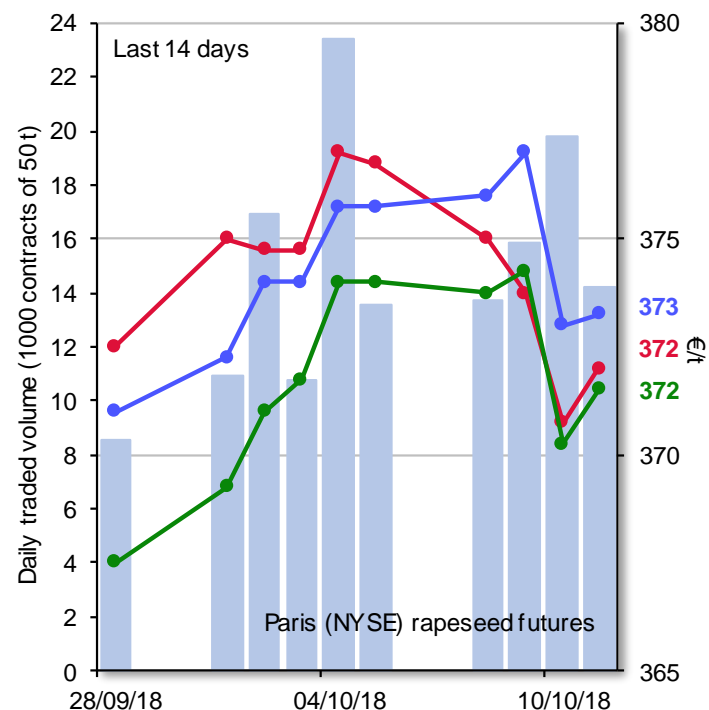
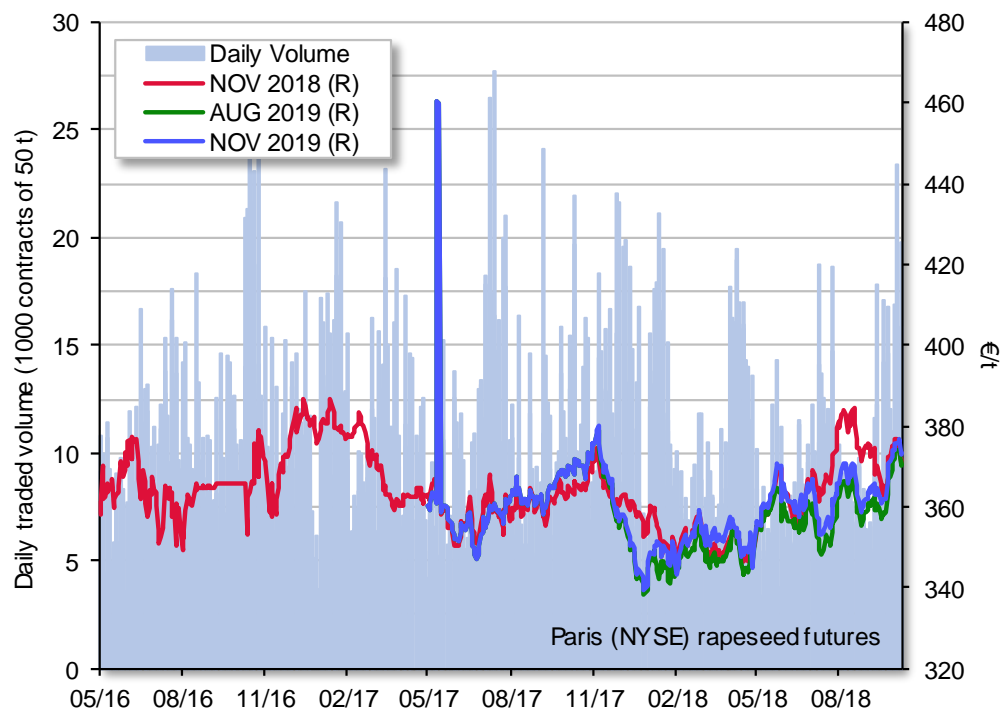


Source: USDA October report

CME soya futures



NYSE Euronext rapeseed futures





Thank you for your attention!

**Presentations & Balance sheets
available at:**

http://ec.europa.eu/agriculture/cereals/index_en.htm

EU Crops Market Observatory

https://ec.europa.eu/agriculture/market-observatory/crops_en