

EU Pigmeat Market Situation

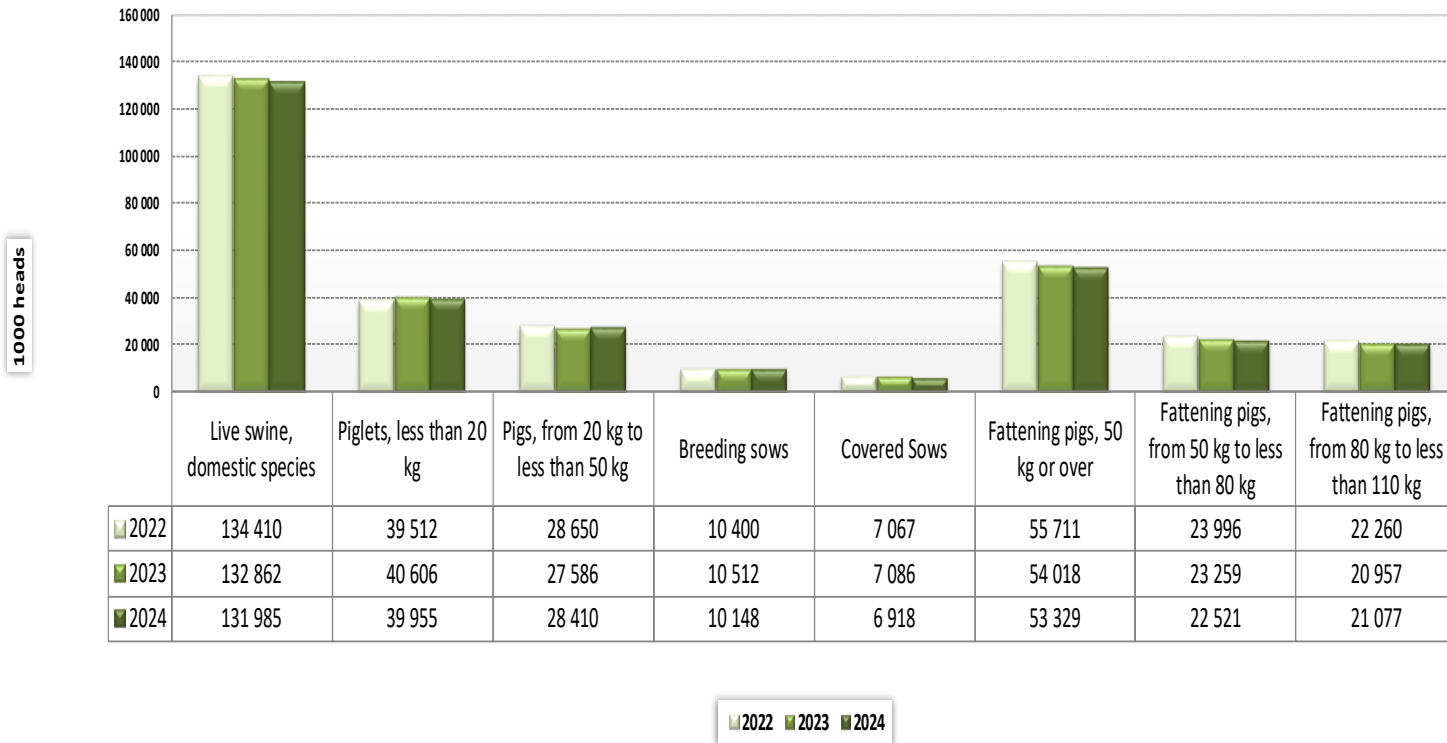
16 April 2025



LIVESTOCK

DECEMBER SURVEY (1000 heads)

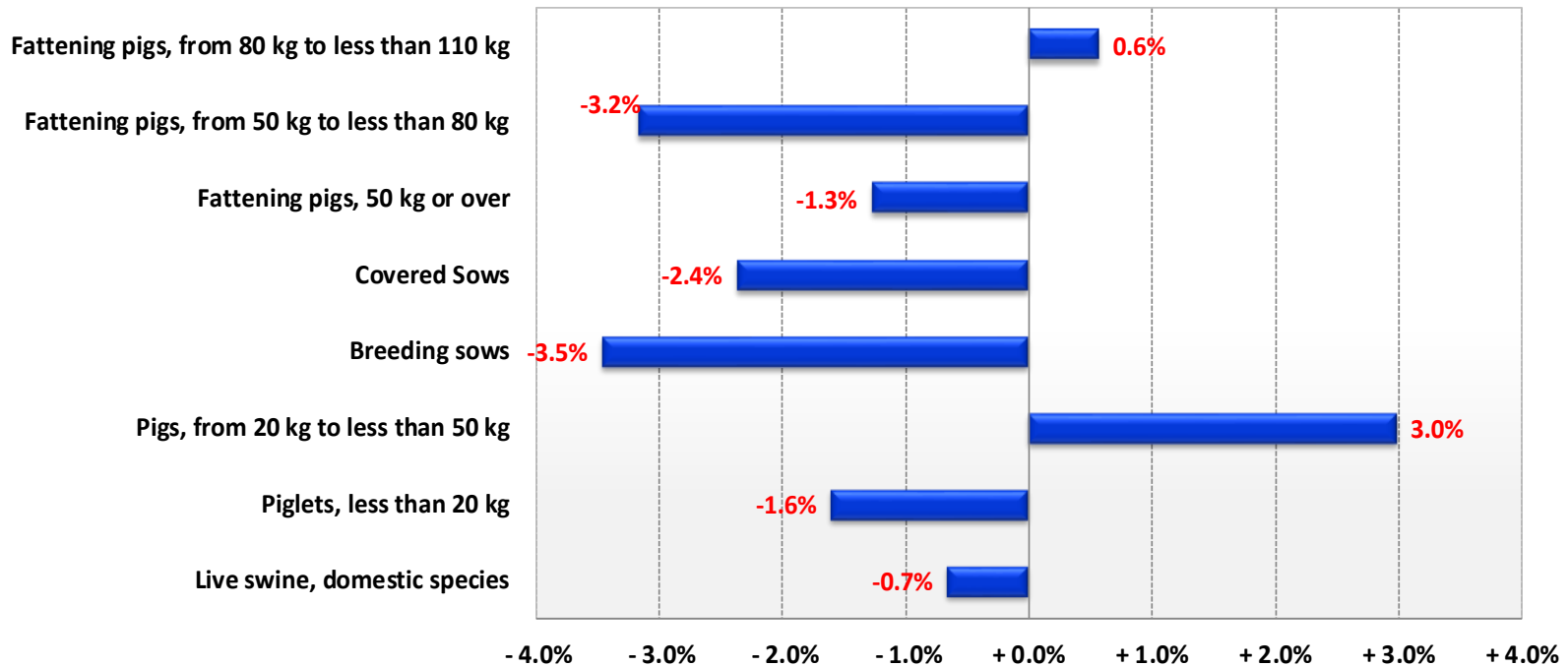
Pig population - Livestock survey December 2024



Source: Eurostat

LIVESTOCK DECEMBER SURVEY (1000 heads)

Change in pig population - Livestock survey December 2024 compared to December 2023



Source: Eurostat

LIVESTOCK DECEMBER SURVEY (1000 heads)



Pig population/Livestock survey - annual data (In 1 000 heads)

Source : Eurostat annual data (apro_mt_Isplg)

	Live swine, domestic species			% Var 2024 2023	Piglets, live weight of under 20 kg			% Var 2024 2023	Breeding pigs			% Var 2024 2023	Breeding sows, live weight 50 kg or over			% Var 2024 2023	Covered sows			% Var 2024 2023
	2022	2023	2024		2022	2023	2024		2022	2023	2024		2022	2023	2024		2022	2023	2024	
BE	5 751	5 380	5 375	- 0.1%	1 593	1 485	1 504	+ 1.3%	368	354	345	- 2.5%	365	350	342	- 2.1%	300	287	279	- 2.9%
BG	602	725	701	- 3.3%	125	164	176	+ 7.5%	61	80	71	- 11.6%	60	80	70	- 11.6%	39	45	47	+ 4.0%
CZ	1 329	1 362	1 422	+ 4.4%	417	377	399	+ 5.8%	117	121	126	+ 4.0%	116	120	125	+ 3.8%	73	74	76	+ 2.8%
DK	11 541	11 368	11 583	+ 1.9%	4 118	4 142	4 269	+ 3.1%	1 128	1 142	1 169	+ 2.4%	1 118	1 133	1 159	+ 2.3%	698	704	719	+ 2.1%
DE	21 366	21 224	21 184	- 0.2%	6 368	6 411	6 280	- 2.0%	1 416	1 415	1 419	+ 0.3%	1 401	1 400	1 396	- 0.3%	1 009	1 005	1 002	- 0.3%
EE	269	275	284	+ 3.1%	93	98	93	- 5.0%	23	24	24	- 3.0%	23	24	23	- 3.0%	18	18	18	+ 1.5%
EL	742	788	796	+ 1.0%	186	222	213	- 4.2%	101	96	101	+ 5.2%	98	81	86	+ 5.9%	49	49	46	- 5.8%
ES	34 073	33 803	34 517	+ 2.1%	9 760	10 731	9 866	- 8.1%	2 690	2 790	2 637	- 5.5%	2 659	2 766	2 611	- 5.6%	1 753	1 783	1 770	- 0.7%
FR	12 183	11 794	11 715	- 0.7%	4 417	4 332	4 316	- 0.4%	880	860	844	- 1.9%	869	852	836	- 1.8%	606	596	581	- 2.5%
HR	945	853	876	+ 2.7%	231	228	253	+ 11.0%	87	87	92	+ 5.7%	85	85	90	+ 5.9%	33	37	38	+ 2.7%
IE	1 570	1 408	1 474	+ 4.7%	419	363	386	+ 6.4%	127	127	122	- 3.6%	127	126	121	- 3.5%	88	81	81	+ 0.1%
IT	8 739	9 171	7 820	- 14.7%	1 688	1 680	1 879	+ 11.9%	717	673	615	- 8.6%	693	649	597	- 8.0%	571	536	487	- 9.2%
CY	331	310	310	+ 0.0%	116	112	114	+ 2.6%	27	27	26	- 4.2%	27	26	25	- 4.0%	23	23	23	- 1.2%
LV	308	290	300	+ 3.5%	57	53	58	+ 9.0%	36	37	37	+ 1.6%	36	36	37	+ 1.7%	14	14	14	- 1.0%
LT	517	497	500	+ 0.7%	98	98	100	+ 2.0%	40	40	40	- 0.6%	39	40	39	- 0.5%	31	31	31	- 1.4%
LU	66	65	65	- 0.6%	9	9	8	- 14.8%	3	3	3	- 1.8%	2	3	3	+ 1.9%	2	2	2	- 0.9%
HU	2 558	2 608	2 802	+ 7.5%	661	693	732	+ 5.6%	230	234	251	+ 7.3%	227	232	248	+ 7.2%	151	158	168	+ 5.9%
MT	30	36	37	+ 4.0%	7	9	9	+ 4.9%	4	3	2	- 7.5%	4	3	2	- 7.8%	3	2	2	- 8.0%
NL	10 706	10 375	10 182	- 1.9%	4 444	4 498	4 577	+ 1.8%	892	917	789	- 14.0%	888	910	783	- 14.0%	561	563	496	- 11.9%
AT	2 650	2 516	2 534	+ 0.7%	636	605	615	+ 1.5%	212	207	205	- 1.2%	208	204	201	- 1.1%	147	145	140	- 3.4%
PL	9 624	9 770	9 078	- 7.1%	1 891	2 007	1 780	- 11.3%	603	674	610	- 9.5%	593	663	600	- 9.6%	405	456	411	- 9.9%
PT	2 183	2 181	2 180	- 0.1%	797	834	811	- 2.8%	230	225	225	+ 0.1%	225	221	220	- 0.1%	152	149	149	+ 0.2%
RO	3 329	3 154	3 268	+ 3.6%	522	610	637	+ 4.5%	289	277	289	+ 4.2%	285	273	284	+ 4.2%	174	169	175	+ 3.8%
SI	202	196	232	+ 18.5%	47	43	48	+ 13.2%	14	13	16	+ 17.0%	13	13	15	+ 16.7%	8	8	9	+ 19.2%
SK	381	403	414	+ 2.7%	145	166	180	+ 8.3%	37	36	41	+ 13.9%	36	35	40	+ 14.2%	20	20	21	+ 5.1%
FI	998	984	975	- 0.9%	302	304	297	- 2.1%	85	85	83	- 1.9%	85	84	83	- 1.9%	62	61	60	- 2.1%
SE	1 416	1 326	1 360	+ 2.6%	365	334	354	+ 5.9%	120	106	111	+ 4.3%	119	105	109	+ 4.4%	79	71	74	+ 4.7%
EU	134 410	132 862	131 985	- 0.7%	39 512	40 606	39 955	- 1.6%	10 537	10 651	10 290	- 3.4%	10 400	10 512	10 148	- 3.5%	7 067	7 086	6 918	- 2.4%



LIVESTOCK DECEMBER SURVEY (1000 heads)



Pig population/Livestock survey - annual data (In 1 000 heads)

	Sows covered for the first time			% Var 2024 2023	Sows, not covered			% Var 2024 2023	Gilts not yet covered			% Var 2024 2023	Pigs, from 20 kg to less than 50 kg			% Var 2024 2023	Fattening pigs, live weight 50 kg or over			% Var 2024 2023
	2022	2023	2024		2022	2023	2024		2022	2023	2024		2022	2023	2024		2022	2023	2024	
BE	54	51	51	- 0.3%	65	63	63	+ 1.2%	33	34	31	- 8.9%	1 128	940	1 006	+ 6.9%	2 663	2 601	2 521	- 3.1%
BG	3	14	10	- 30.6%	21	34	23	- 32.0%	7	12	13	+ 11.9%	162	171	185	+ 8.1%	254	309	268	- 13.2%
CZ	19	18	20	+ 7.7%	43	46	48	+ 5.5%	21	22	24	+ 8.1%	294	332	336	+ 1.4%	500	533	561	+ 5.3%
DK	174	174	179	+ 2.9%	420	429	440	+ 2.6%	203	209	216	+ 3.3%	3 571	3 527	3 636	+ 3.1%	2 724	2 557	2 509	- 1.9%
DE	157	165	163	- 1.2%	392	395	394	- 0.3%	159	166	170	+ 2.4%	3 866	3 832	3 749	- 2.2%	9 716	9 566	9 736	+ 1.8%
EE	3	2	3	+ 23.5%	4	6	5	- 15.9%	3	5	4	- 11.8%	51	45	53	+ 16.5%	103	107	114	+ 6.3%
EL	13	20	19	- 5.0%	49	33	40	+ 23.4%	12	9	10	+ 13.3%	174	178	185	+ 3.9%	281	291	297	+ 1.9%
ES	284	314	278	- 11.5%	907	983	841	- 14.5%	343	391	320	- 18.2%	7 820	7 112	8 617	+ 21.2%	13 803	13 171	13 397	+ 1.7%
FR	107	108	108	- 0.0%	264	256	256	- 0.2%	100	103	105	+ 1.6%	1 817	1 765	1 674	- 5.2%	5 068	4 837	4 881	+ 0.9%
HR	7	7	7	+ 0.0%	52	48	52	+ 8.3%	7	11	12	+ 9.1%	153	147	141	- 4.1%	474	391	390	- 0.3%
IE	16	18	17	- 3.2%	38	45	41	- 9.9%	14	15	16	+ 9.2%	387	369	373	+ 1.1%	638	549	592	+ 7.9%
IT	104	96	91	- 5.7%	121	114	110	- 3.1%	45	49	45	- 8.5%	1 556	1 761	1 222	- 30.6%	4 778	5 057	4 104	- 18.8%
CY	4	4	3	- 10.9%	4	3	3	- 23.5%	3	2	2	- 34.0%	66	61	62	+ 2.1%	122	110	106	- 3.6%
LV	4	4	4	- 1.1%	22	22	23	+ 3.3%	15	15	16	+ 5.4%	94	90	87	- 4.0%	121	110	119	+ 7.6%
LT	6	6	6	- 5.4%	9	8	8	+ 3.0%	6	7	7	+ 0.3%	143	139	135	- 3.3%	237	220	226	+ 2.8%
LU	0	0	0	+ 3.0%	1	1	1	- 3.9%	0	0	0	- 19.4%	20	19	18	- 1.0%	35	34	35	+ 3.6%
HU	35	34	33	- 2.4%	76	73	81	+ 10.0%	45	44	43	- 2.7%	539	528	585	+ 10.8%	1 128	1 153	1 235	+ 7.1%
MT	0	0	0	- 7.1%	0	0	0	- 8.8%	0	0	0	- 8.8%	7	9	10	+ 5.0%	11	15	15	+ 5.0%
NL	112	108	90	- 16.7%	327	348	287	- 17.5%	147	144	108	- 25.0%	1 543	1 454	1 446	- 0.6%	3 827	3 506	3 370	- 3.9%
AT	20	20	20	- 3.5%	62	59	62	+ 4.6%	21	20	21	+ 4.1%	681	642	628	- 2.3%	1 122	1 062	1 088	+ 2.4%
PL	65	77	69	- 11.3%	188	207	188	- 9.0%	47	50	42	- 15.4%	2 788	2 836	2 616	- 7.7%	4 342	4 253	4 072	- 4.3%
PT	29	31	32	+ 3.7%	73	72	71	- 0.7%	26	26	26	- 2.5%	401	395	365	- 7.6%	756	727	778	+ 7.1%
RO	57	39	41	+ 3.8%	111	104	109	+ 4.9%	38	44	47	+ 6.8%	704	565	589	+ 4.2%	1 814	1 703	1 753	+ 3.0%
SI	1	2	2	+ 10.5%	5	5	6	+ 12.8%	1	1	2	+ 9.6%	31	33	48	+ 42.4%	110	107	121	+ 13.2%
SK	4	4	5	+ 27.3%	15	15	19	+ 25.8%	6	6	7	+ 22.3%	65	74	71	- 5.2%	134	127	123	- 3.1%
FI	12	12	12	- 2.0%	23	23	22	- 1.2%	14	14	13	- 0.6%	231	229	227	- 0.8%	380	367	368	+ 0.2%
SE	29	24	22	- 10.5%	39	34	35	+ 3.7%	23	22	22	+ 1.6%	360	330	347	+ 5.3%	571	556	549	- 1.4%
EU	1 318	1 353	1 283	- 5.2%	3 331	3 428	3 230	- 5.8%	1 340	1 421	1 322	- 7.0%	28 650	27 586	28 410	+ 3.0%	55 711	54 018	53 329	- 1.3%



LIVESTOCK DECEMBER SURVEY (1000 heads)



Pig population/Livestock survey - annual data (In 1 000 heads)

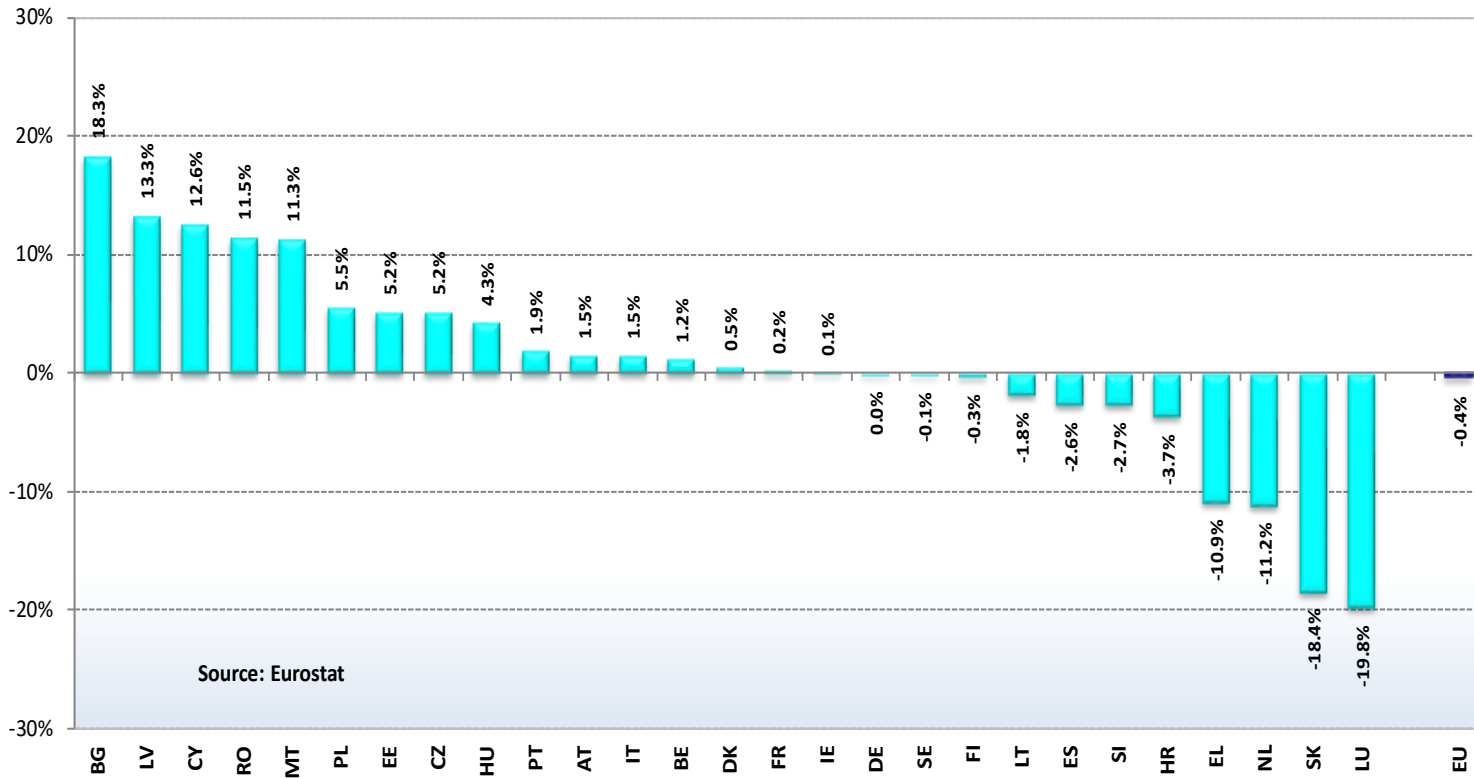
	Fattening pigs, from 50 kg to less than 80 kg			% Var 2024 2023	Fattening pigs, from 80 kg to less than 110 kg			% Var 2024 2023	Fattening pigs, live weight 110 kg or over			% Var 2024 2023	Breeding boars			% Var 2024 2023
	2022	2023	2024		2022	2023	2024		2022	2023	2024		2022	2023	2024	
BE	1 257	1 156	1 136	- 1.7%	1 117	1 140	1 083	- 5.1%	289	305	302	- 1.0%	3	4	3	- 33.8%
BG	124	156	137	- 12.4%	127	149	127	- 15.0%	3	4	5	+ 26.6%	1	1	1	- 12.0%
CZ	228	243	257	+ 5.8%	206	236	237	+ 0.4%	66	54	68	+ 24.3%	1	1	1	+ 27.0%
DK	2 174	2 042	2 002	- 1.9%	544	510	501	- 1.9%	6	5	6	+ 20.0%	10	9	10	+ 11.1%
DE	4 247	4 226	4 352	+ 3.0%	4 306	4 174	4 187	+ 0.3%	1 164	1 166	1 197	+ 2.6%	15	15	0	- 100.0%
EE	52	48	78	+ 62.9%	37	42	30	- 27.5%	14	17	5	- 72.4%	0	0	0	- 4.0%
EL	130	137	143	+ 4.1%	113	108	108	+ 0.6%	37	46	46	- 1.9%	4	15	15	+ 1.4%
ES	5 557	5 258	5 107	- 2.9%	6 070	5 482	6 044	+ 10.3%	2 176	2 431	2 246	- 7.6%	31	24	25	+ 7.1%
FR	2 254	2 153	2 184	+ 1.4%	2 073	1 956	1 963	+ 0.3%	741	728	734	+ 0.9%	11	8	7	- 6.0%
HR	115	134	117	- 12.7%	164	86	93	+ 8.1%	195	171	180	+ 5.3%	2	2	2	+ 0.0%
IE	318	277	295	+ 6.6%	276	234	242	+ 3.4%	44	38	55	+ 45.5%	1	1	1	- 13.8%
IT	1 272	1 480	902	- 39.1%	1 383	1 307	894	- 31.6%	2 123	2 270	2 309	+ 1.7%	24	23	18	- 21.7%
CY	62	58	55	- 5.5%	57	51	50	- 2.3%	3	1	1	+ 46.0%	0	0	0	- 18.4%
LV	68	62	66	+ 7.5%	50	45	49	+ 7.5%	3	3	4	+ 10.0%	0	0	0	- 6.1%
LT	141	128	118	- 7.6%	75	68	79	+ 17.4%	21	25	29	+ 16.4%	0	0	0	- 2.6%
LU	14	13	14	+ 3.2%	12	16	14	- 11.4%	9	5	7	+ 59.0%	0	0	0	+ 0.0%
HU	449	467	508	+ 8.7%	437	469	471	+ 0.5%	242	217	256	+ 18.0%	3	2	2	+ 15.8%
MT	7	9	9	+ 5.0%	4	5	5	+ 5.0%	1	1	1	+ 4.5%	0	0	0	+ 0.0%
NL	1 630	1 489	1 438	- 3.4%	1 559	1 413	1 362	- 3.6%	637	605	571	- 5.6%	4	6	6	+ 0.0%
AT	519	505	513	+ 1.5%	455	431	442	+ 2.5%	147	126	133	+ 5.9%	4	3	3	- 7.5%
PL	1 956	1 865	1 716	- 8.0%	1 816	1 701	1 683	- 1.0%	570	687	672	- 2.2%	10	11	10	- 6.8%
PT	410	418	408	- 2.5%	300	269	325	+ 20.9%	46	40	46	+ 15.2%	5	4	5	+ 11.1%
RO	509	457	475	+ 3.9%	624	622	642	+ 3.1%	681	623	637	+ 2.1%	5	4	4	+ 2.3%
SI	32	26	44	+ 69.9%	31	29	35	+ 24.2%	47	52	41	- 20.9%	0	0	1	+ 24.4%
SK	66	58	47	- 18.7%	47	47	46	- 3.7%	21	21	30	+ 41.6%	2	0	0	- 10.6%
FI	172	167	168	+ 0.6%	151	146	145	- 0.1%	56	54	54	- 0.1%	1	1	1	- 1.3%
SE	232	226	231	+ 2.3%	226	221	219	- 0.9%	113	110	99	- 10.0%	2	2	2	- 0.7%
EU	23 996	23 259	22 521	- 3.2%	22 260	20 957	21 077	+ 0.6%	9 454	9 803	9 731	- 0.7%	138	138	119	- 13.8%



PRODUCTION

% EVOLUTION IN HEADS

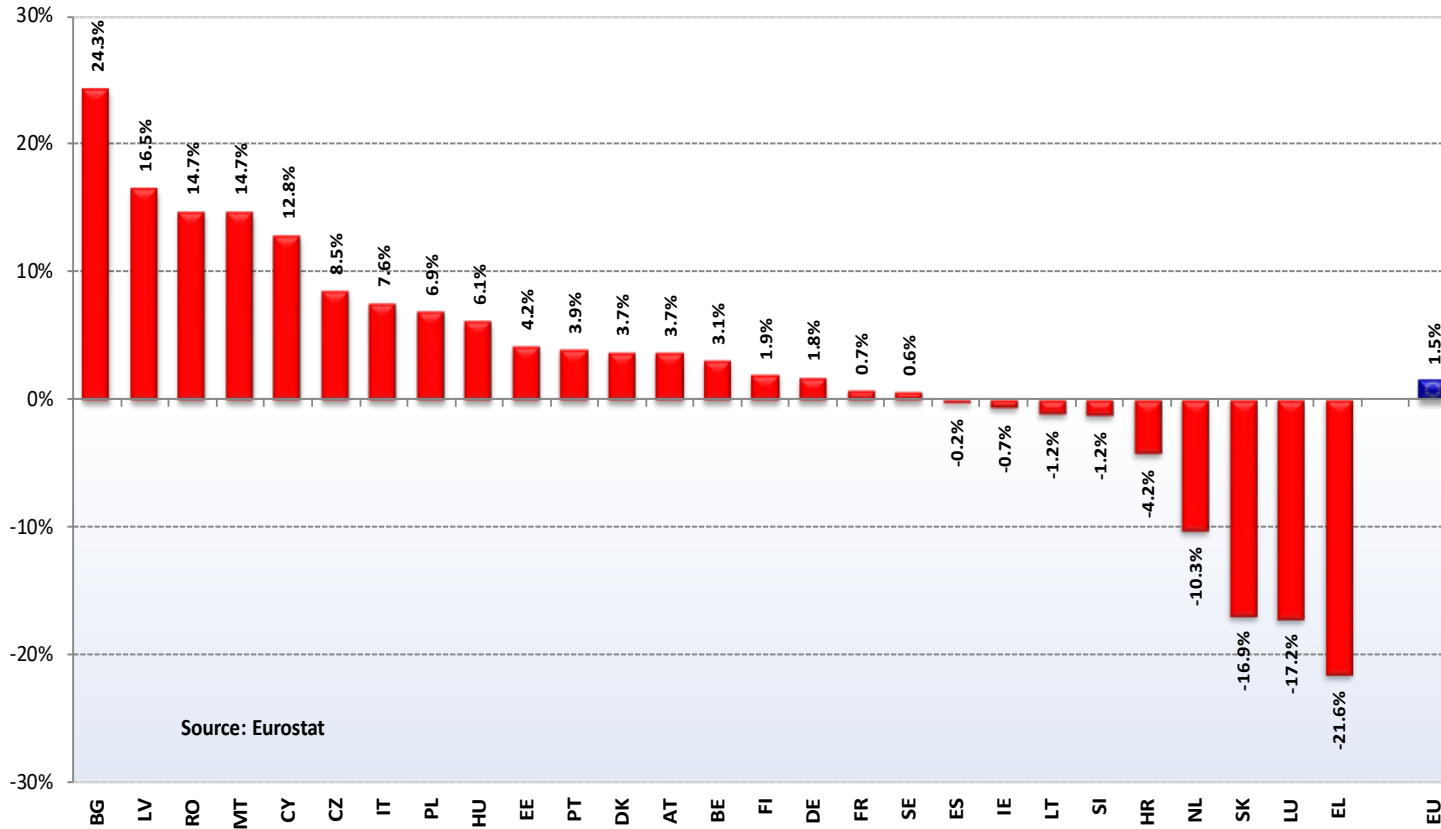
Change in Pig Slaughter ('000 Heads)
2025/2024 (up to January)



PRODUCTION

% EVOLUTION IN TONNES

Change in Pig Slaughter ('000 tonnes)
2025/2024 (up to January)



PRICES

EU Prices	Week 14	Evolution since last week	Evolution since last month	Evolution since last year
Average (S-E)	202.1	+ 3.7%	+ 8.0%	- 8.8%
Class S	203.8	+ 3.3%	+ 7.5%	- 8.5%
Class E	198.6	+ 4.6%	+ 9.0%	- 9.2%
Piglet	79.3	+ 1.5%	+ 8.5%	- 10.9%

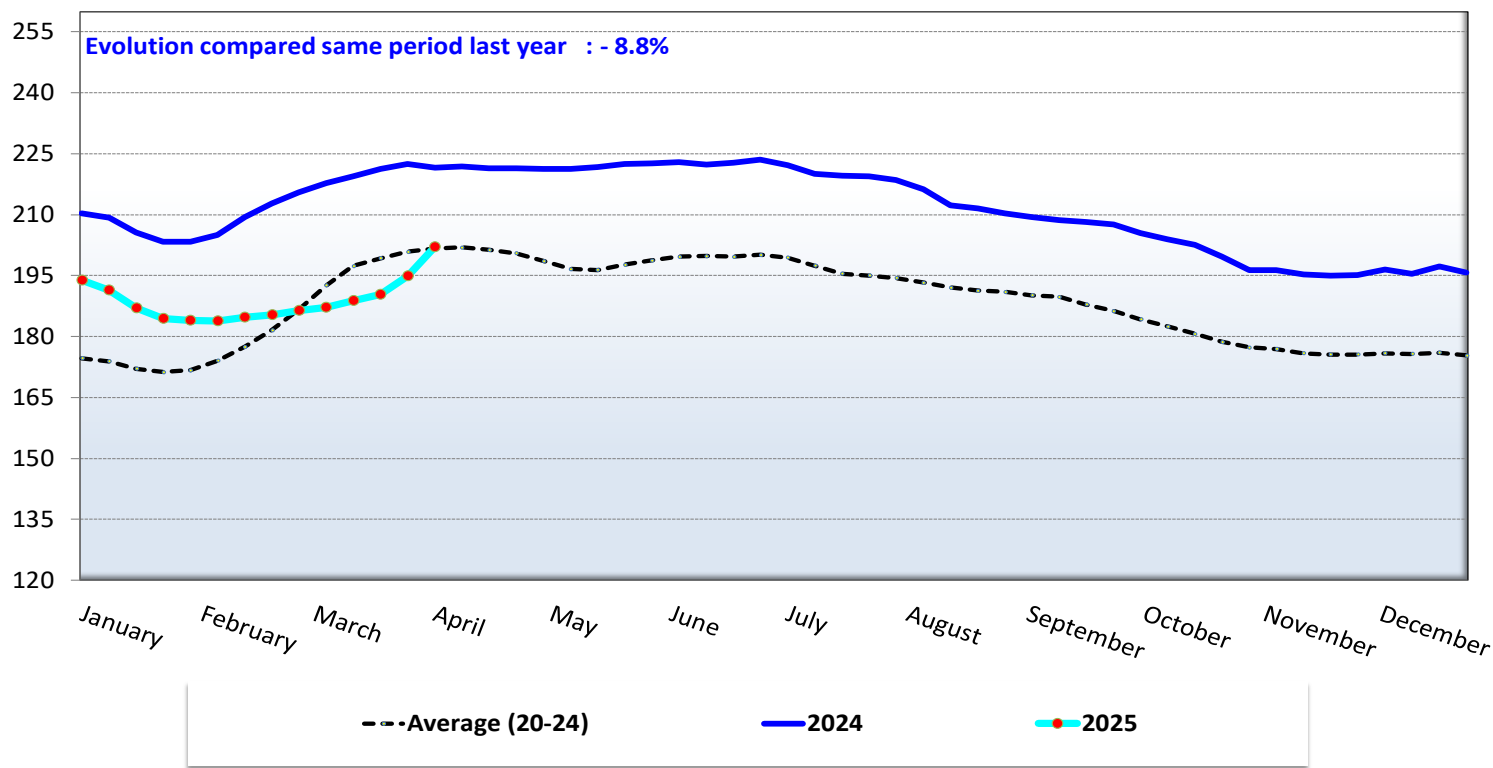
€/100 kg carcass weight

€/head

CARCASS PRICES

Evolution of the EU pig carcass prices (average class E & S)

Week 14 latest price ==> 202.08 EUR/100 kg/cw



CARCASS PRICES

Classe E

	Mar-2024	Mar-2025
BG	255.53	257.68
SE	229.59	253.15
MT	225.37	245.15
PT	236.03	223.69
GR	243.04	211.52
IE	199.60	205.75
FI	213.39	205.11
ES	217.50	204.76
AT	236.59	198.98
SK	232.76	196.29
SI	231.55	194.04
LV	237.98	191.11
PL	220.39	185.45
FR	213.13	184.94
LT	226.30	184.22
CY	255.73	182.51
DE	230.82	182.02
CZ	214.41	178.48
HU	223.56	175.68
EE	c	175.34
BE	212.90	174.53
HR	211.00	166.33
DK	187.47	165.71
NL	184.19	156.29
RO	227.47	146.45
EU	217.40	185.01

Classe S

	Mar-2024	Mar-2025
SE	233.60	256.82
MT	226.33	248.23
PT	234.96	222.38
FI	221.34	214.23
ES	225.03	213.21
SI	250.04	212.45
GR	243.04	211.52
AT	246.86	209.55
IE	199.97	206.04
FR	221.35	192.00
PL	222.62	187.99
LT	223.67	185.42
LV	230.52	185.21
DE	234.21	184.88
CZ	219.02	183.06
BE	219.52	180.31
HU	228.55	178.90
SK	224.46	177.51
DK	191.06	169.91
HR	222.33	164.81
NL	185.33	157.43
RO	229.95	147.68
EU	220.84	192.78

Classe R

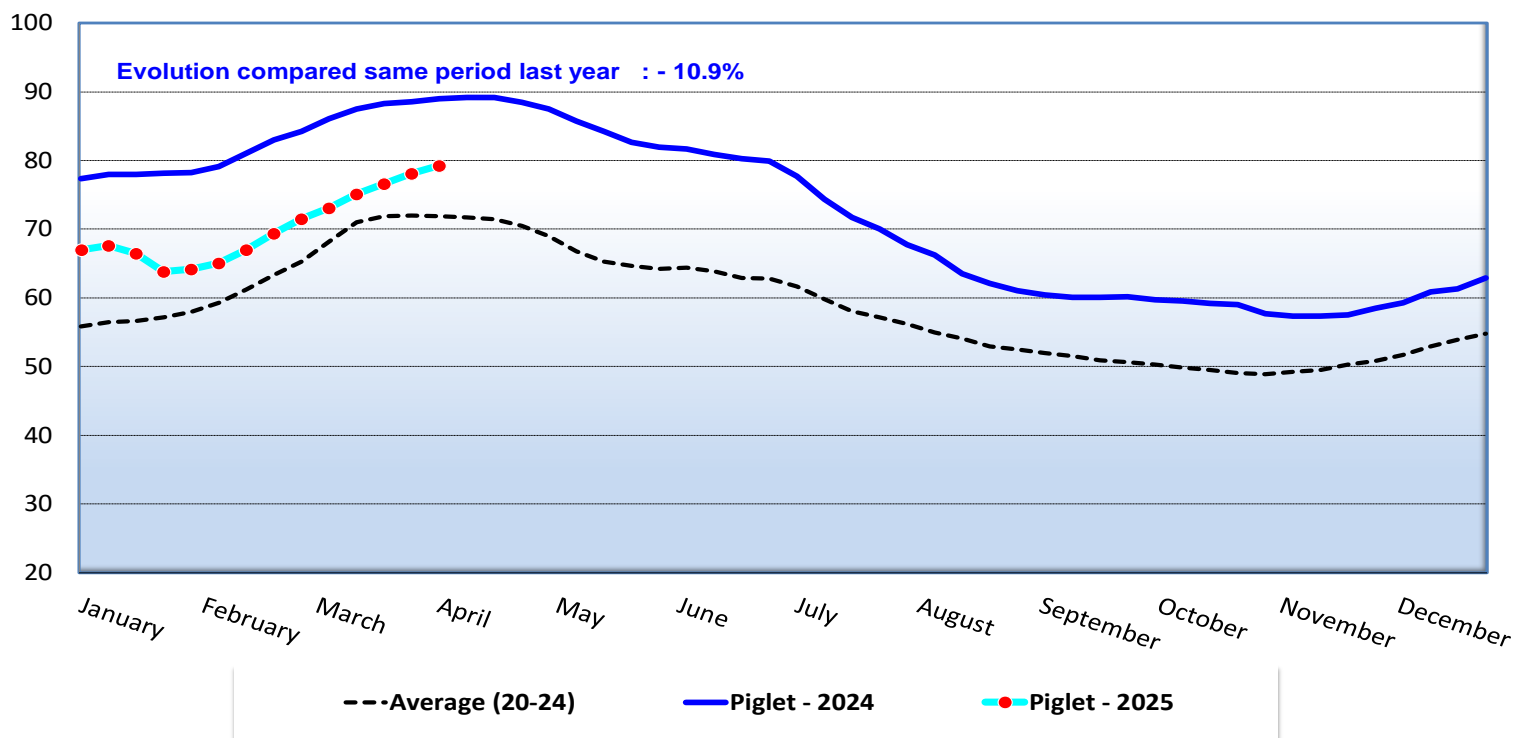
	Mar-2024	Mar-2025
IT	254.22	213.55
GR	243.04	211.52
ES	224.40	210.93
SK	216.65	185.41
LT	219.38	177.62
DE	202.99	154.42
CZ	183.37	148.82
EU	248.99	209.47



PIGLET PRICES

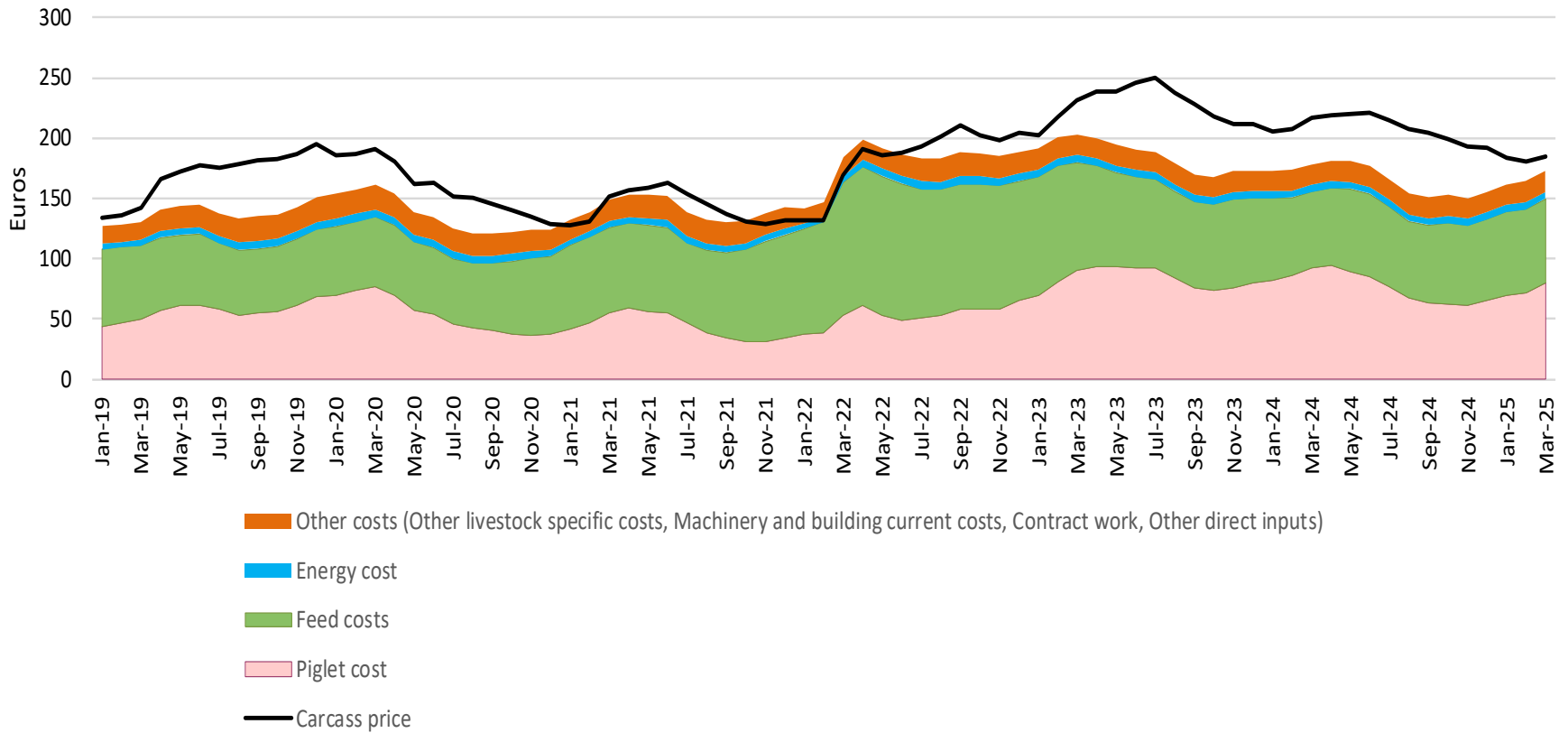
Evolution of the EU average piglet prices
(€/head)

Week 14 latest price ==> 79.26 EUR/head



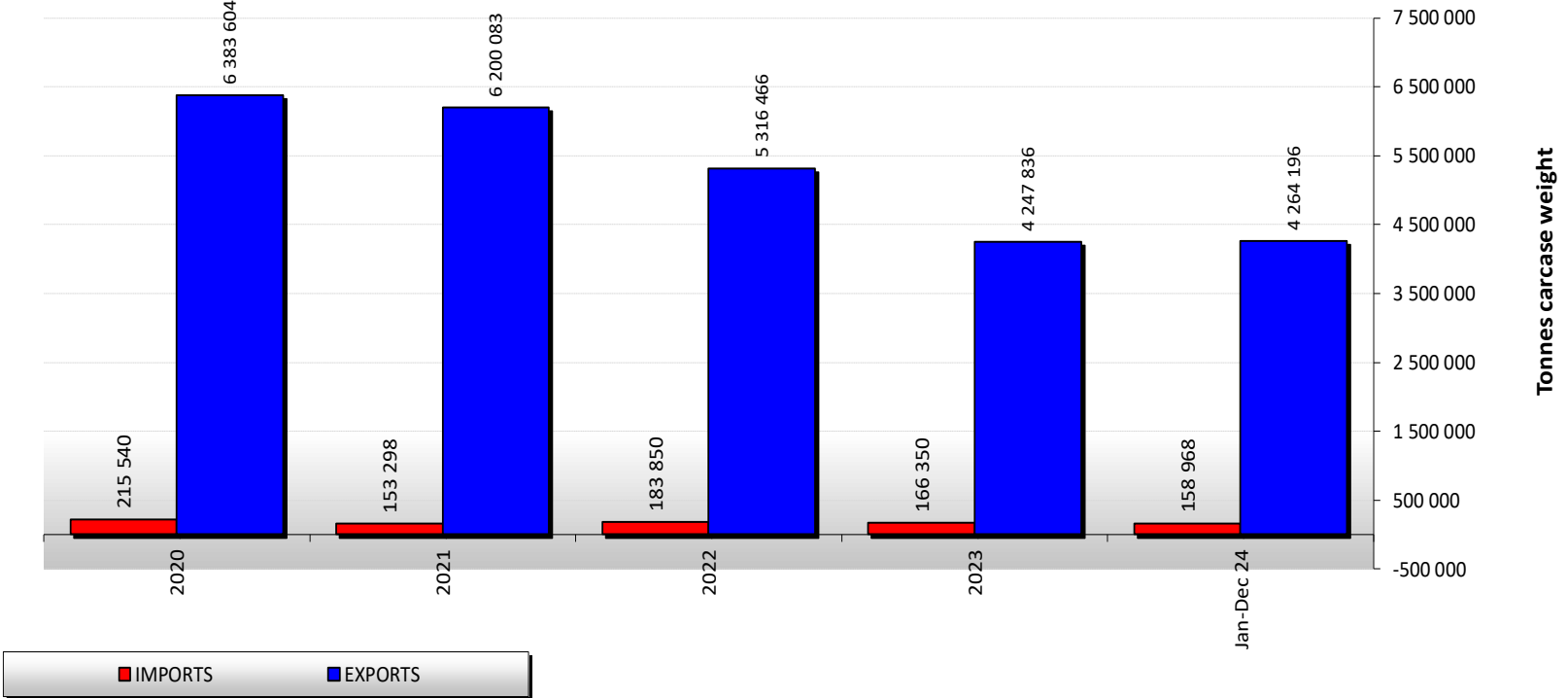
PIG FATTENING – COSTS VS. CARCASS PRICE

Pig fattening - costs vs. carcass price
(€ / 100 kg cwe)



EU TRADE BALANCE

EU Trade of PIG products (Quantity)

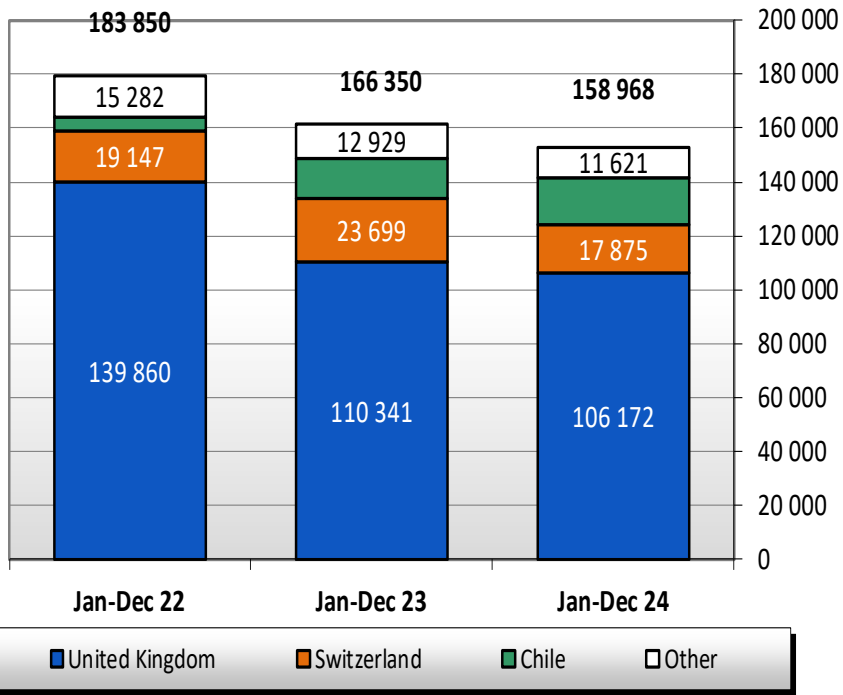


EU imports of selected PIG products (COMEXT – tonnes carcass weight)

	2020		2021		2022		2023		Jan-Dec 24		Compared to Jan-Dec 23
	tonnes	%	tonnes	%	tonnes	%	tonnes	%	tonnes	%	
United Kingdom	176 896	82.1%	110 253	71.9%	139 860	76.1%	110 341	66.3%	106 172	66.8%	- 3.8%
Switzerland	19 296	9.0%	19 957	13.0%	19 147	10.4%	23 699	14.2%	17 875	11.2%	- 24.6%
Chile	2 320	1.1%	2 302	1.5%	4 859	2.6%	14 472	8.7%	17 357	10.9%	+ 19.9%
Norway	5 426	2.5%	5 679	3.7%	4 702	2.6%	4 910	3.0%	5 943	3.7%	+ 21.0%
<i>Other Origins</i>	11 602	5.4%	15 108	9.9%	15 282	8.3%	12 929	7.8%	11 621	7.3%	
Extra-EU	215 540		153 298		183 850		166 350		158 968		
% change			- 29%		+ 20%		- 10%		- 4.4%		

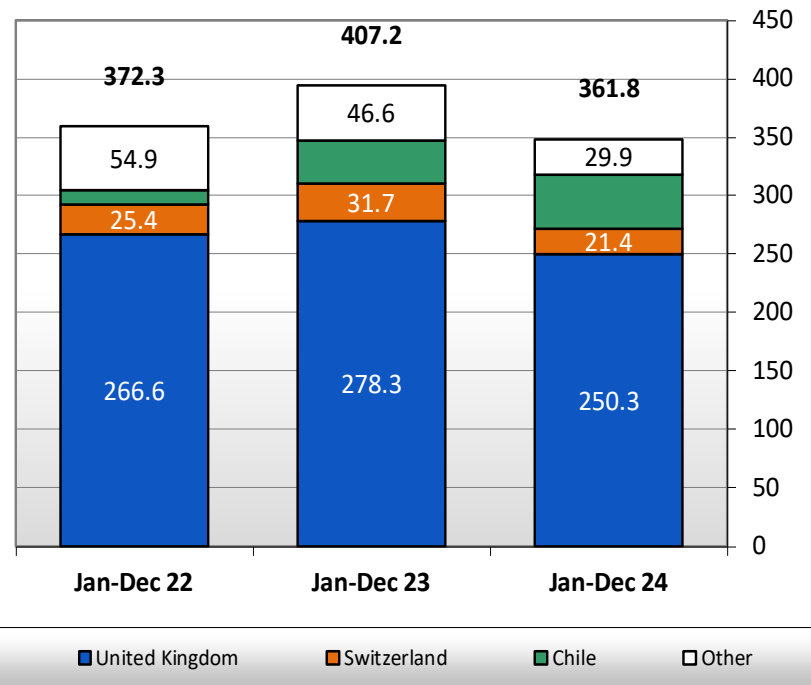
EU imports of selected PIG products (COMEXT – tonnes carcass weight)

IMPORTS of PIG Meat into EU (Tonnes c. weight)



EU*: without UK

IMPORTS of PIG Meat into EU (Millions EUR)



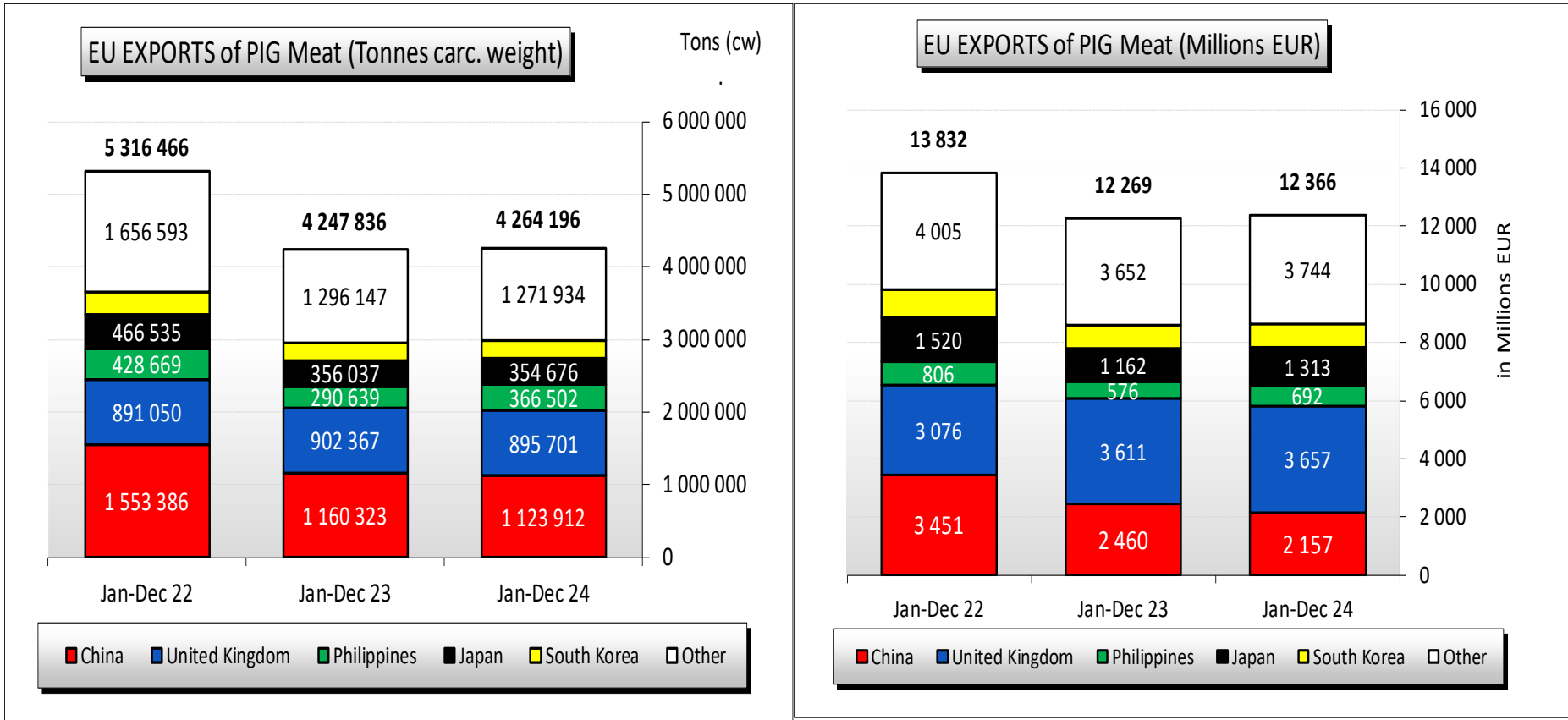
EU*: without UK



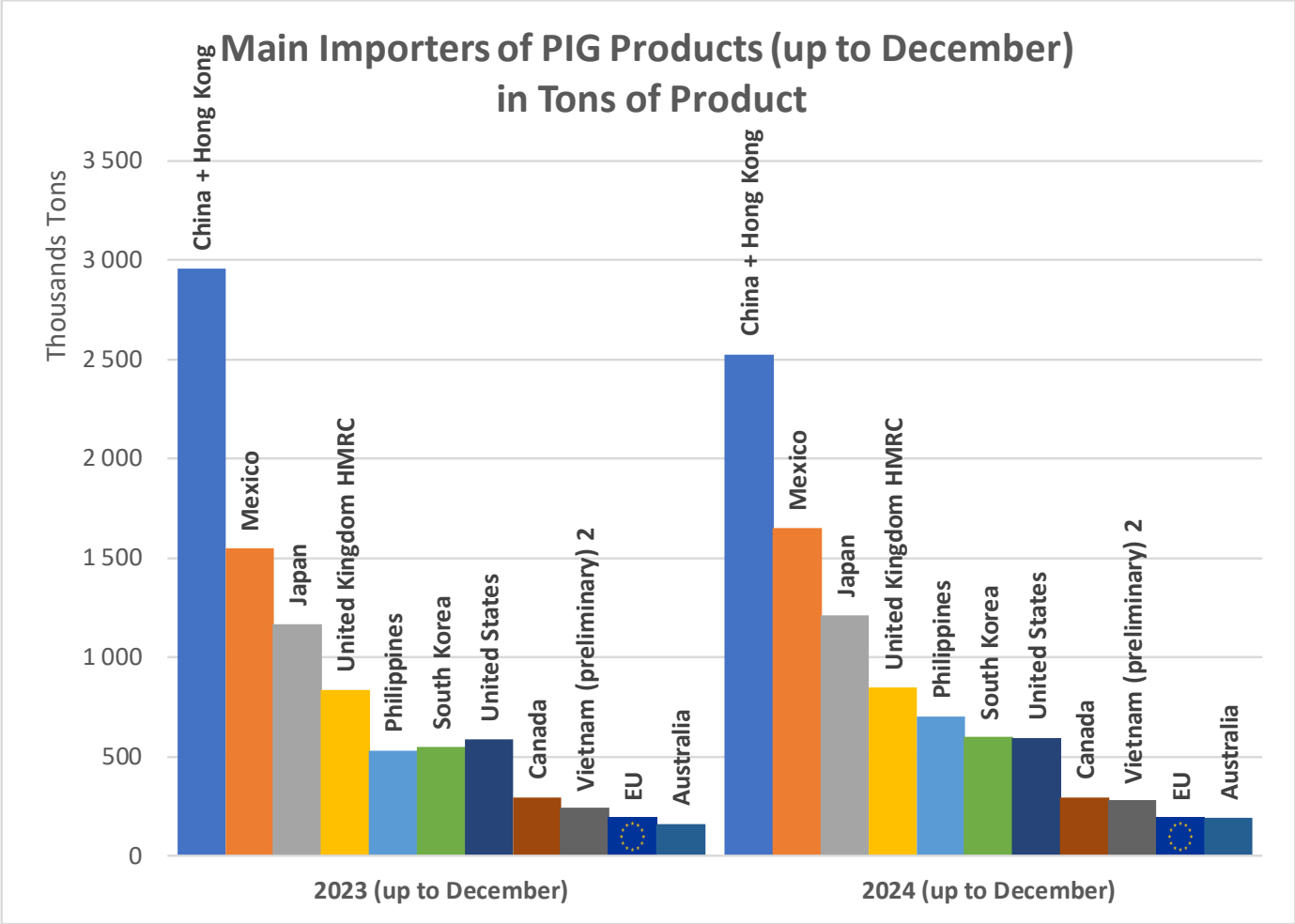
EU exports of selected PIG products (COMEXT – tonnes carcass weight)

	2020		2021		2022		2023		Jan-Dec 24		Compared to Jan-Dec 23
	tonnes	%	tonnes	%	tonnes	%	tonnes	%	tonnes	%	
China	3 337 529	52.3%	2 574 644	41.5%	1 553 386	29.2%	1 160 323	27.3%	1 123 912	26.4%	- 3.1%
United Kingdom	963 955	15.1%	921 136	14.9%	891 050	16.8%	902 367	21.2%	895 701	21.0%	- 0.7%
Philippines	152 947	2.4%	350 650	5.7%	428 669	8.1%	290 639	6.8%	366 502	8.6%	+ 26.1%
Japan	360 071	5.6%	380 327	6.1%	466 535	8.8%	356 037	8.4%	354 676	8.3%	- 0.4%
South Korea	195 115	3.1%	284 447	4.6%	320 233	6.0%	242 323	5.7%	251 471	5.9%	+ 3.8%
Vietnam	96 366	1.5%	131 706	2.1%	89 650	1.7%	118 400	2.8%	136 414	3.2%	+ 15.2%
USA	104 388	1.6%	144 399	2.3%	135 555	2.5%	102 008	2.4%	113 870	2.7%	+ 11.6%
Australia	83 887	1.3%	133 836	2.2%	157 372	3.0%	94 497	2.2%	99 761	2.3%	+ 5.6%
Ivory Coast	59 578	0.9%	90 159	1.5%	100 219	1.9%	80 824	1.9%	86 823	2.0%	+ 7.4%
Serbia	54 453	0.9%	63 389	1.0%	86 530	1.6%	78 315	1.8%	80 522	1.9%	+ 2.8%
Congo	36 383	0.6%	44 981	0.7%	53 710	1.0%	53 427	1.3%	57 329	1.3%	+ 7.3%
Hong Kong	283 590	4.4%	153 858	2.5%	78 469	1.5%	68 429	1.6%	52 772	1.2%	- 22.9%
Taiwan	40 945	0.6%	78 457	1.3%	82 172	1.5%	61 030	1.4%	49 685	1.2%	- 18.6%
Malaysia	14 846	0.2%	16 220	0.3%	38 438	0.7%	55 351	1.3%	47 984	1.1%	- 13.3%
New Zealand	33 263	0.5%	48 867	0.8%	46 134	0.9%	30 168	0.7%	36 580	0.9%	+ 21.3%
Singapore	35 545	0.6%	34 128	0.6%	36 215	0.7%	33 302	0.8%	31 650	0.7%	- 5.0%
Bosnia-Herz.	19 035	0.3%	23 142	0.4%	27 039	0.5%	28 771	0.7%	29 669	0.7%	+ 3.1%
<i>Other Destinations</i>	<i>511 709</i>	<i>8.0%</i>	<i>725 736</i>	<i>11.7%</i>	<i>725 089</i>	<i>13.6%</i>	<i>491 625</i>	<i>11.6%</i>	<i>448 874</i>	<i>10.5%</i>	
Extra-EU	6 383 604		6 200 083		5 316 466		4 247 836		4 264 196		
% change			- 3%		- 14%		- 20%		+ 0.4%		

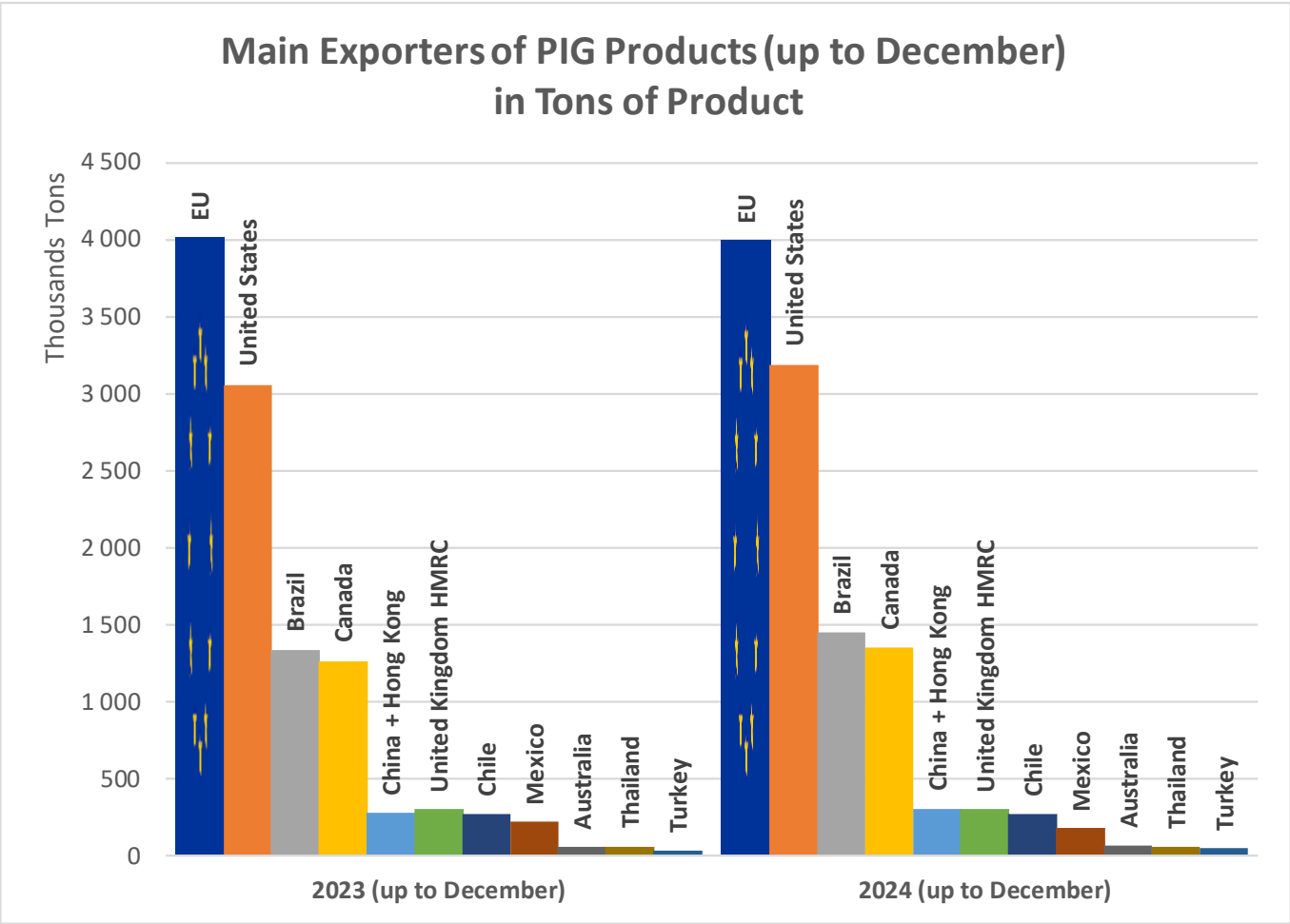
EU exports of selected PIG products (COMEXT – tonnes carcass weight)



WORLD PIGMEAT MAIN IMPORTERS

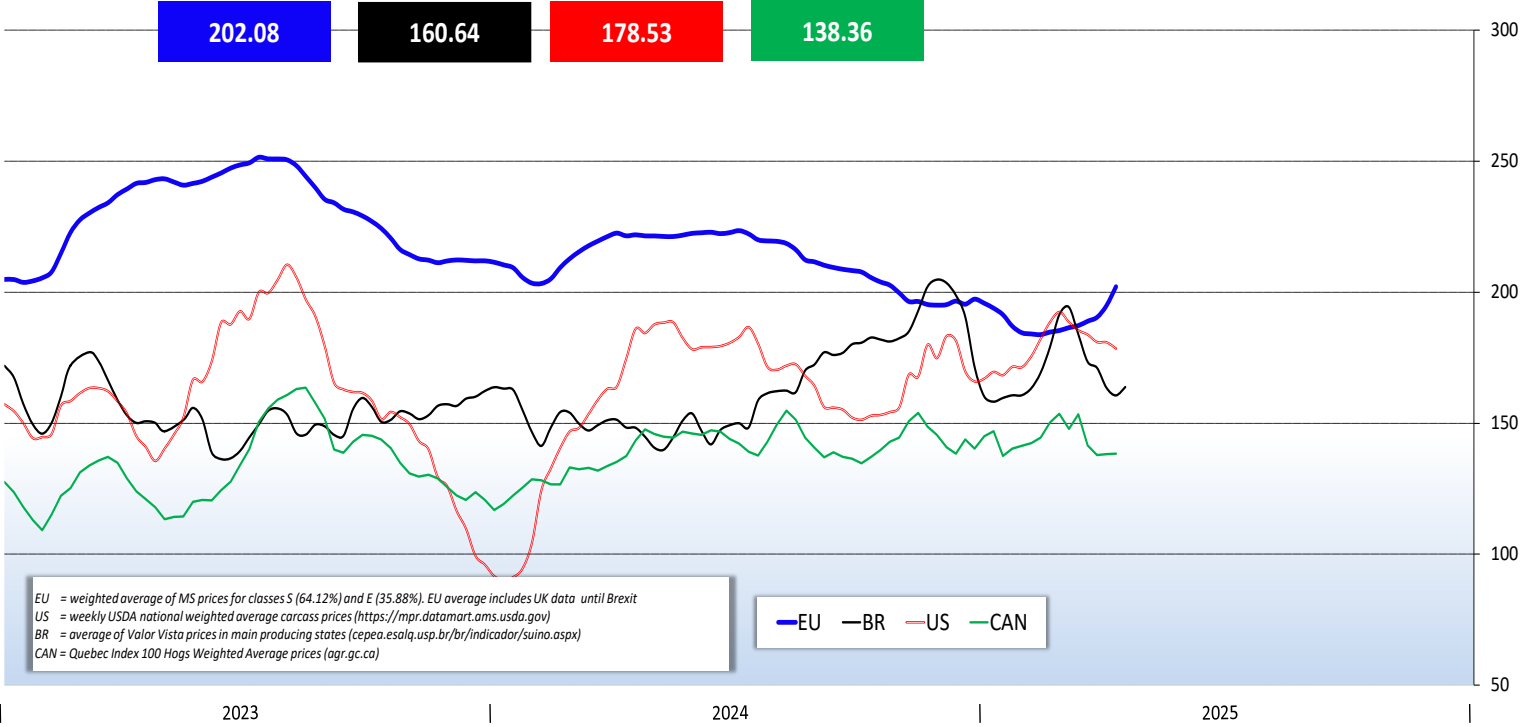


WORLD PIGMEAT MAIN EXPORTERS



WORLD PIGMEAT PRICES

World weekly average Pig prices 2023 - 2025 in Euro / 100 kg carcass weight (EU, Brazil, USA and Canada)



Follow market updates via the Meat Market Observatory:

http://ec.europa.eu/agriculture/market-observatory/meat/index_en.htm

> Pigmear

and check the latest data on the Agri-Food Data Portal:

http://agridata.ec.europa.eu/extensions/DataPortal/agricultural_markets.html

> Pigmear



Thank you



© European Union 2025

Unless otherwise noted the reuse of this presentation is authorised under the [CC BY 4.0](https://creativecommons.org/licenses/by/4.0/) license. For any use or reproduction of elements that are not owned by the EU, permission may need to be sought directly from the respective right holders.

