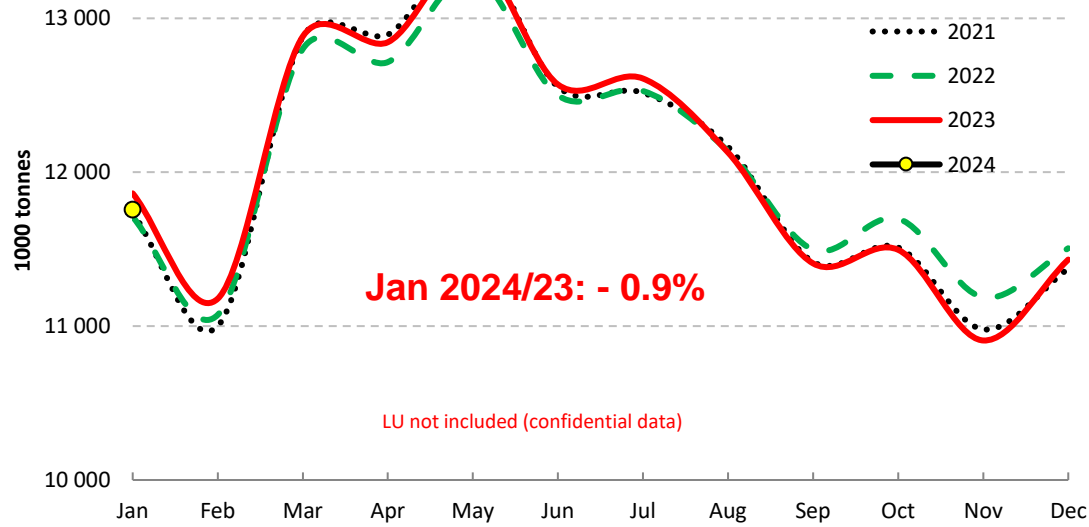


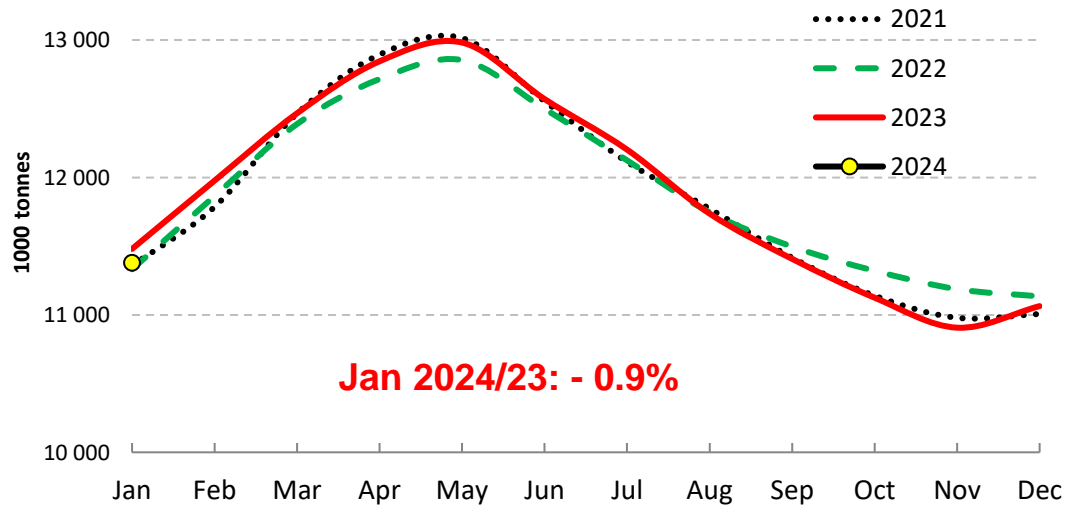
EU Cow's Milk collected

EU - Cows' milk collected



Source: Estat (Newcronos) - MS notifications - CLAL(IT)

EU - Cows' milk collected (30 days months)

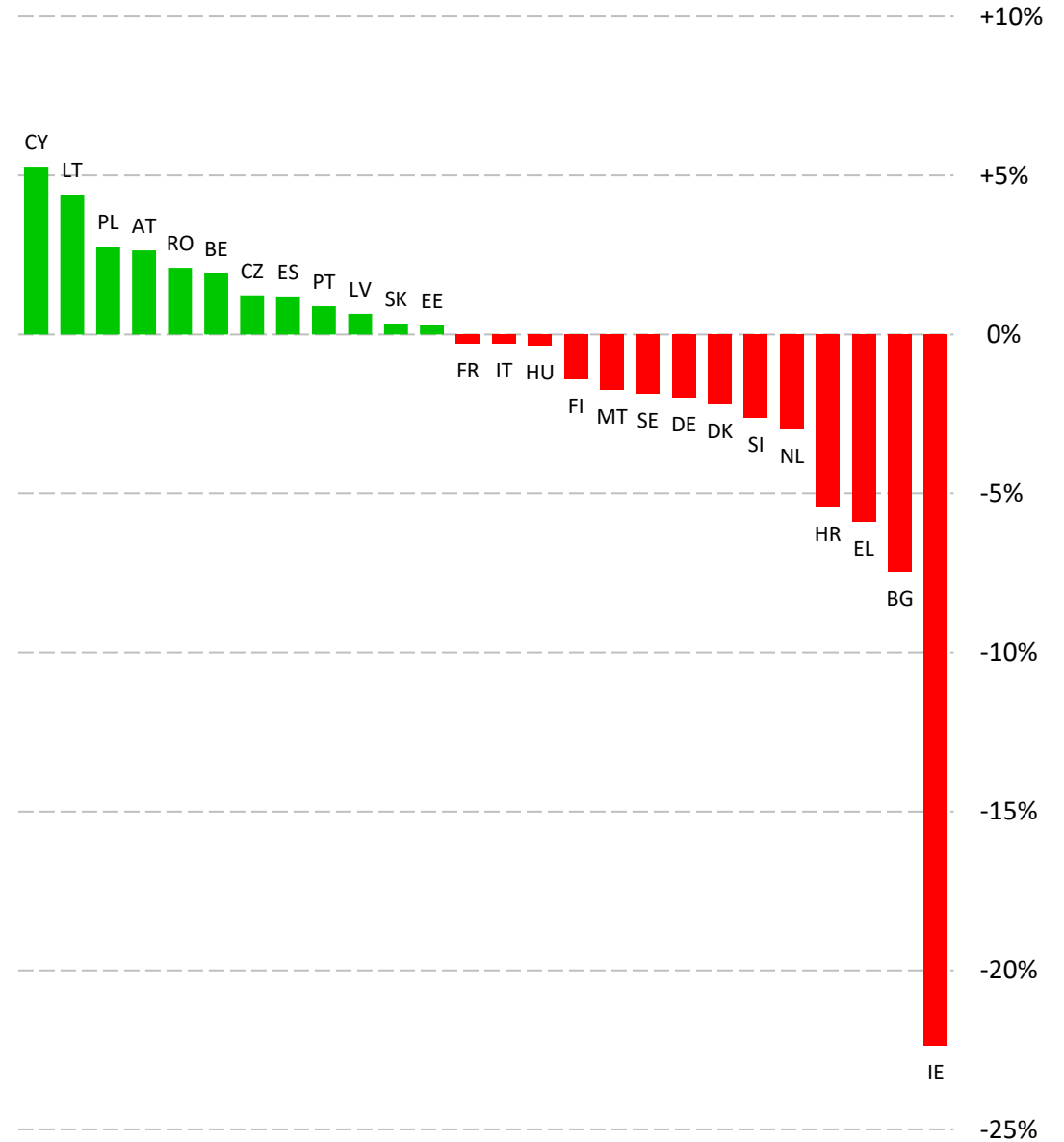


Source: Estat (Newcronos) - MS notifications-CALAL(IT)

Rem: not including LU (confidential data)

Cows' milk collected

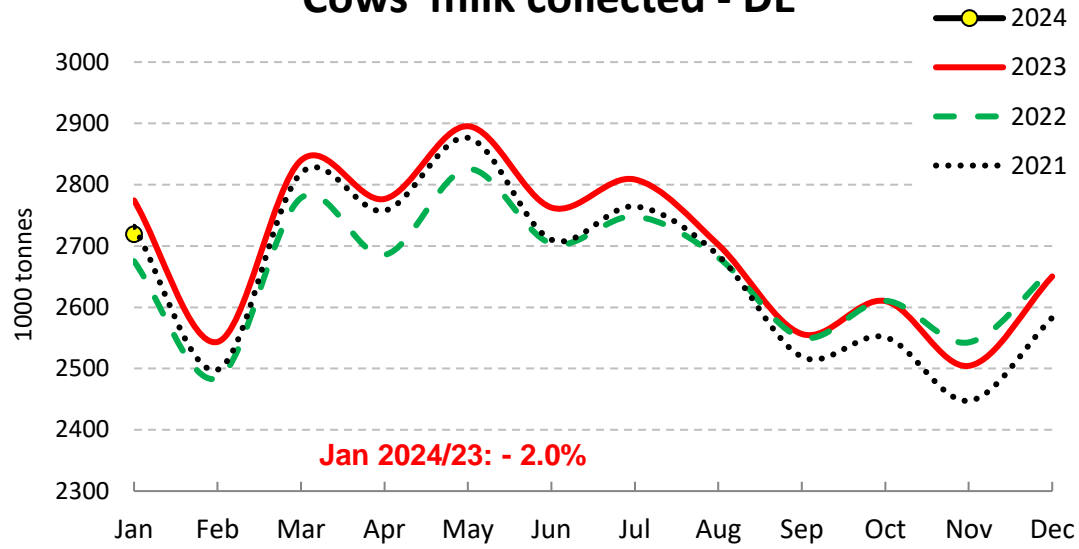
2024/23 Jan-Jan (y/y % chg)



Source: Estat (Newcronos) - MS notifications-CLAL(IT)

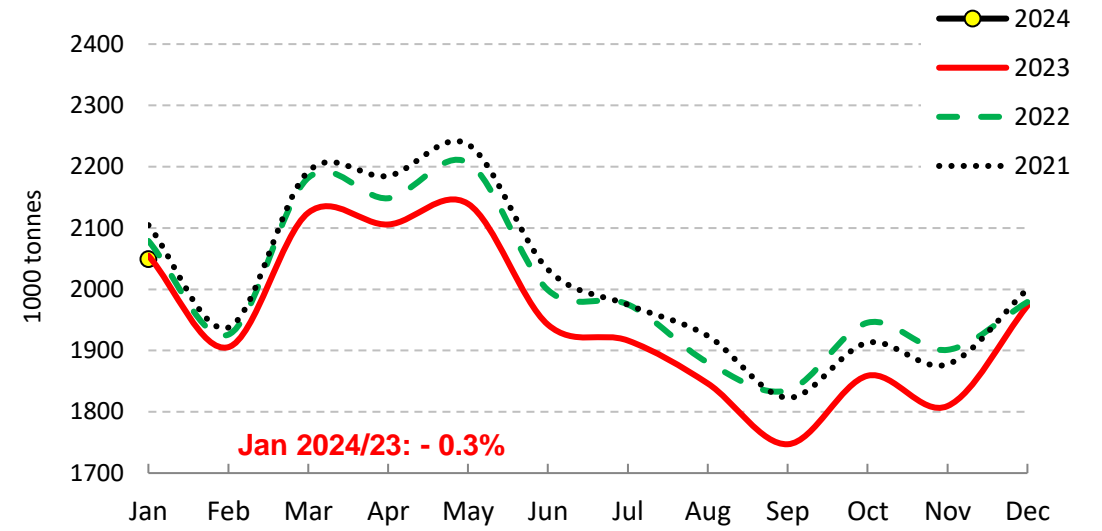
EU Cows' milk collected - MAIN PRODUCERS (1/2)

Cows' milk collected - DE



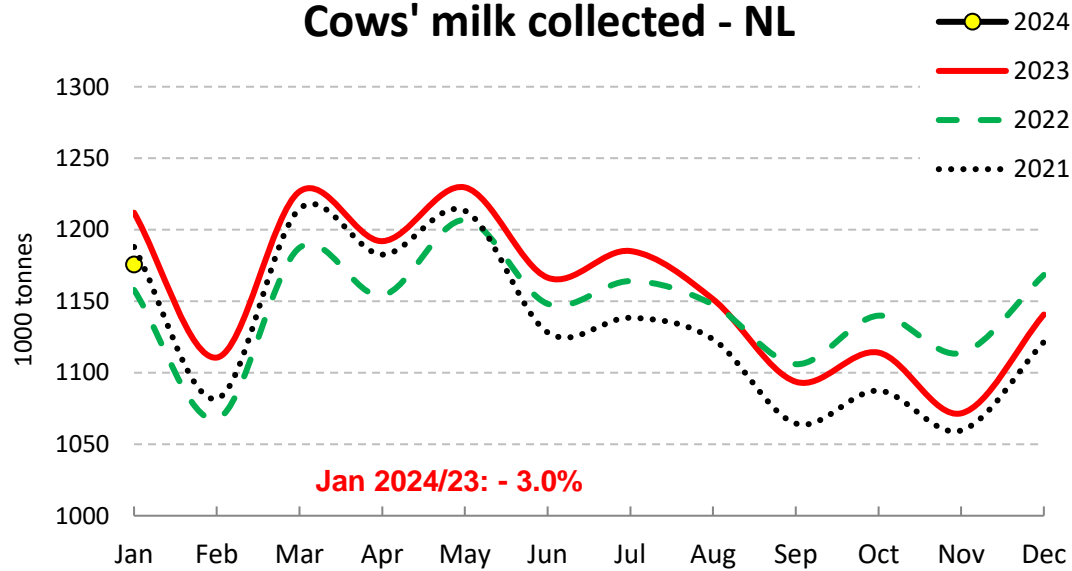
Source : Estat, Newcronos

Cows' milk collected - FR



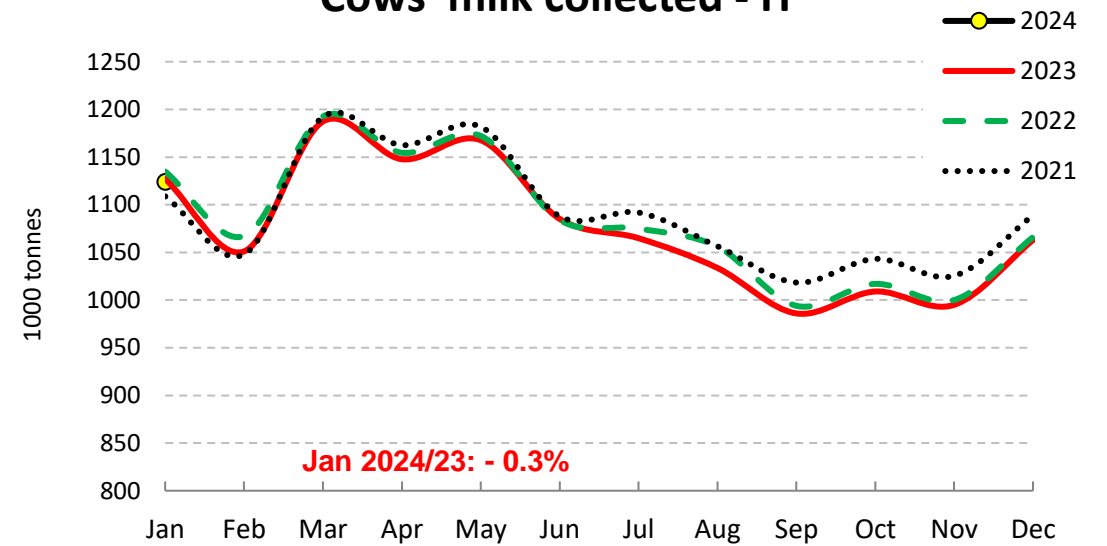
Source : Estat, Newcronos

Cows' milk collected - NL



Source : Estat, Newcronos

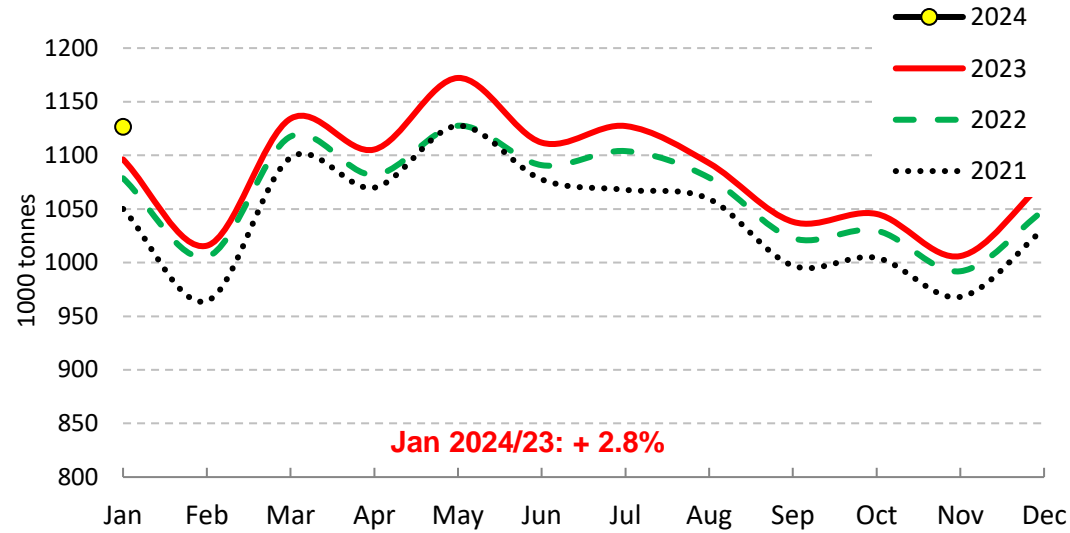
Cows' milk collected - IT



Source: Estat, Newcronos, CLAL

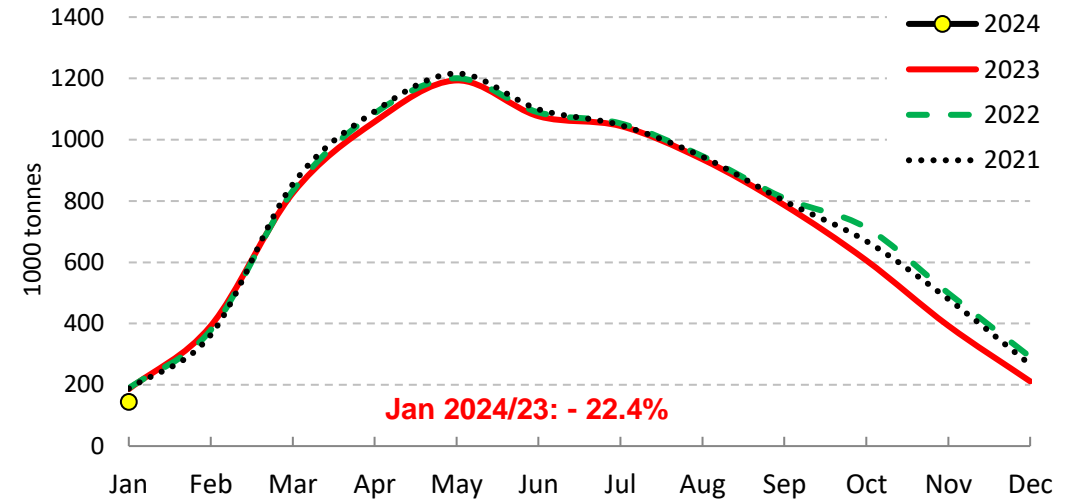
EU Cows' milk collected - MAIN PRODUCERS (2/2)

Cows' milk collected - PL



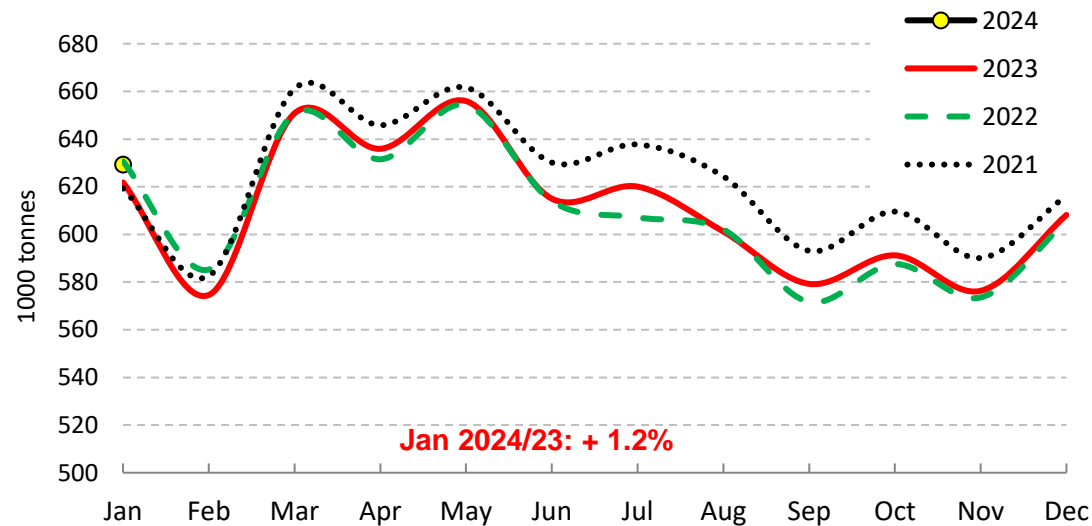
Source : Estat, Newcronos , AGEA

Cows' milk collected - IE



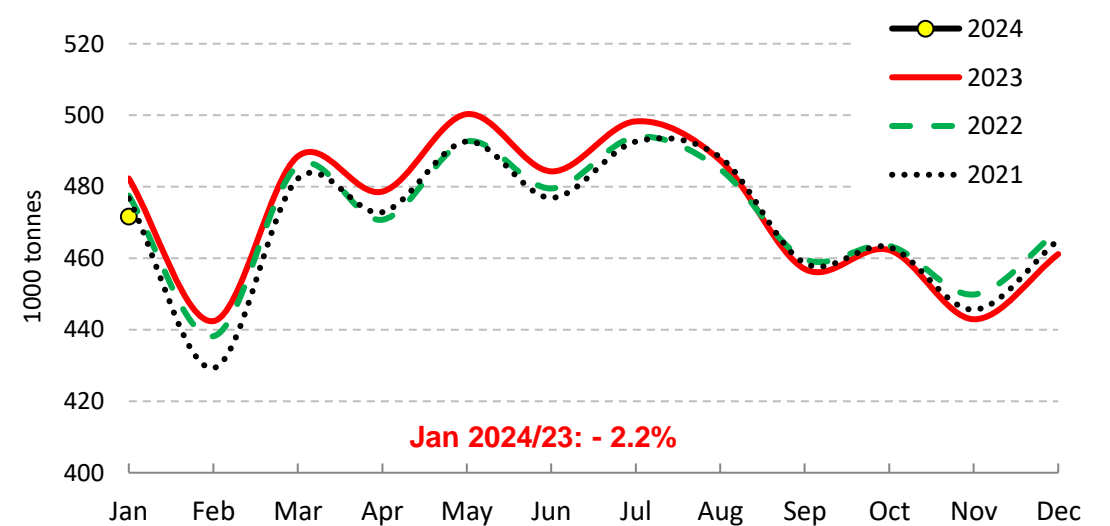
Source : Estat, Newcronos

Cows' milk collected - ES



Source : Estat, Newcronos

Cows' milk collected - DK



Source : Estat, Newcronos

EU Cow's Milk collected

comparison of the last available month with the same month of the previous year

Jan 24 compared to Jan 23				
Rank	evolution in %		evolution in 1000 Tons	
	MS	%	MS	Tons
1.	CY	+ 5.3%	PL	+ 30
2.	LT	+ 4.4%	BE	+ 8
3.	PL	+ 2.8%	AT	+ 7
4.	AT	+ 2.6%	ES	+ 7
5.	RO	+ 2.1%	LT	+ 5
6.	BE	+ 1.9%	CZ	+ 3
7.	CZ	+ 1.2%	RO	+ 2
8.	ES	+ 1.2%	PT	+ 1
9.	PT	+ 0.9%	CY	+ 1
10.	LV	+ 0.6%	LV	+ 0
11.	SK	+ 0.3%	SK	+ 0
12.	EE	+ 0.3%	EE	+ 0
13.	FR	- 0.3%	MT	- 0
14.	IT	- 0.3%	HU	- 1
15.	HU	- 0.4%	SI	- 1
16.	FI	- 1.1%	HR	- 2
17.	MT	- 1.7%	FI	- 3
18.	SE	- 1.9%	IT	- 3
19.	DE	- 2.0%	EL	- 3
20.	DK	- 2.2%	BG	- 4
21.	SI	- 2.6%	SE	- 4
22.	NL	- 3.0%	FR	- 6
23.	HR	- 5.4%	DK	- 11
24.	EL	- 5.9%	NL	- 36
25.	BG	- 7.5%	IE	- 42
26.	IE	- 22.4%	DE	- 55
EU		- 0.9%	EU	- 104

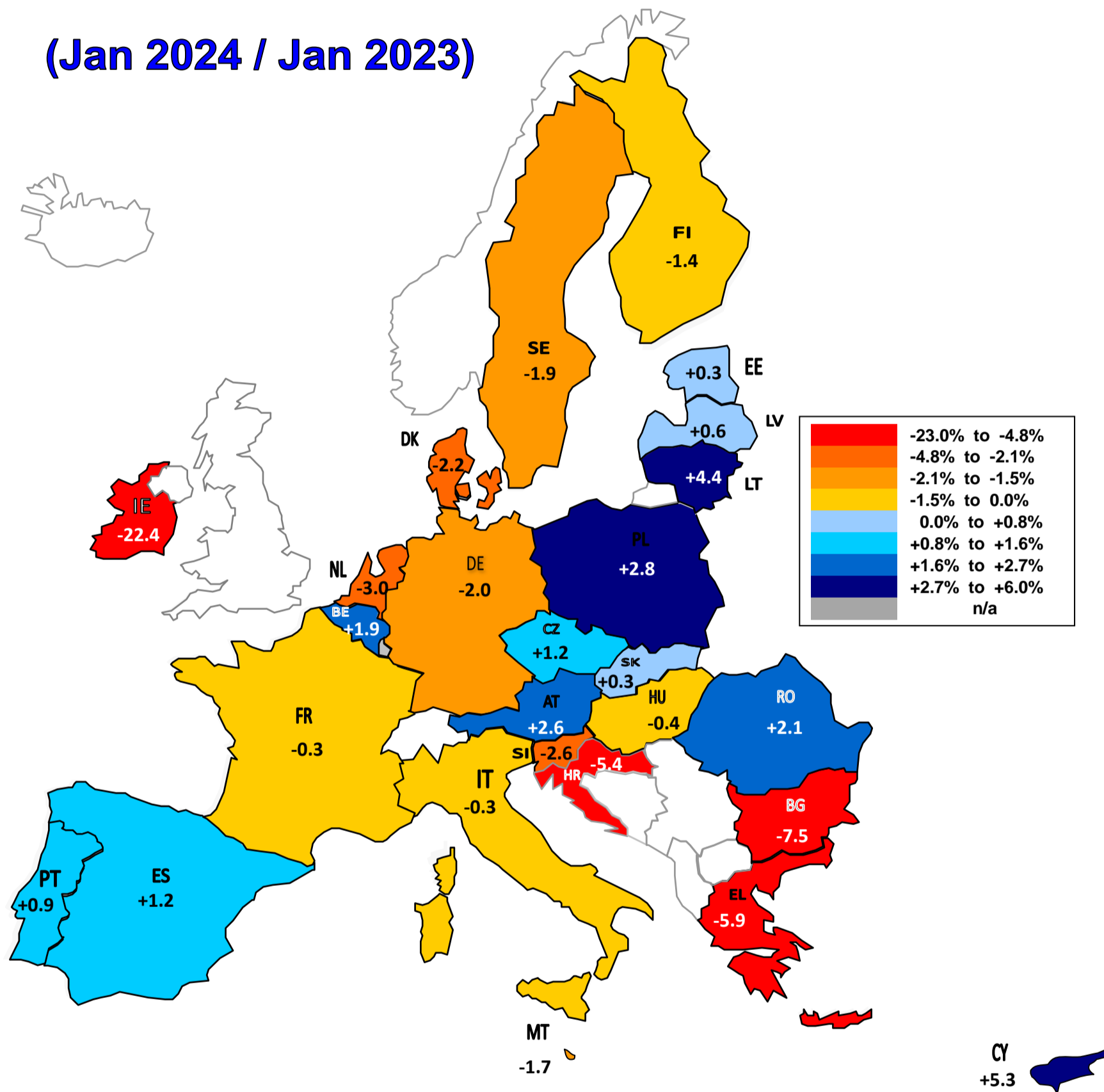
Jan 23 compared to Jan 22				
Rank	evolution in %		evolution in 1000 Tons	
	MS	%	MS	Tons
1.	RO	+ 12.1%	DE	+ 99
2.	BG	+ 5.4%	NL	+ 54
3.	BE	+ 4.8%	BE	+ 18
4.	NL	+ 4.7%	PL	+ 18
5.	DE	+ 3.7%	RO	+ 10
6.	EE	+ 3.2%	SE	+ 5
7.	SE	+ 2.0%	DK	+ 5
8.	PL	+ 1.6%	CZ	+ 3
9.	MT	+ 1.5%	BG	+ 3
10.	CY	+ 1.4%	EE	+ 2
11.	EL	+ 1.4%	EL	+ 1
12.	CZ	+ 1.3%	CY	+ 0
13.	DK	+ 1.0%	MT	+ 0
14.	AT	- 0.1%	LV	- 0
15.	LV	- 0.1%	AT	- 0
16.	IT	- 0.7%	SK	- 1
17.	PT	- 0.7%	SI	- 1
18.	SK	- 1.1%	PT	- 1
19.	FR	- 1.2%	HR	- 2
20.	ES	- 1.4%	IE	- 3
21.	IE	- 1.5%	FI	- 4
22.	SI	- 1.8%	LT	- 5
23.	FI	- 2.1%	IT	- 8
24.	LT	- 4.6%	HU	- 8
25.	HR	- 4.8%	ES	- 9
26.	HU	- 5.1%	FR	- 24
EU		+ 1.3%	EU	+ 153

Jan 22 compared to Jan 21				
Rank	evolution in %		evolution in 1000 Tons	
	MS	%	MS	Tons
1.	LT	+ 6.3%	PL	+ 29
2.	AT	+ 5.2%	IT	+ 26
3.	LV	+ 3.9%	AT	+ 14
4.	EE	+ 3.9%	ES	+ 11
5.	PL	+ 2.7%	LT	+ 6
6.	HU	+ 2.5%	CZ	+ 5
7.	IT	+ 2.3%	HU	+ 4
8.	ES	+ 1.8%	BE	+ 4
9.	CZ	+ 1.7%	EE	+ 3
10.	BE	+ 1.0%	LV	+ 2
11.	IE	+ 0.6%	IE	+ 1
12.	SI	+ 0.5%	DK	+ 1
13.	DK	+ 0.2%	SI	+ 0
14.	FR	- 1.2%	MT	- 0
15.	PT	- 1.2%	CY	- 1
16.	SK	- 1.4%	SK	- 1
17.	SE	- 1.9%	HR	- 1
18.	DE	- 2.1%	EL	- 1
19.	FI	- 2.2%	BG	- 2
20.	NL	- 2.5%	PT	- 2
21.	EL	- 2.6%	RO	- 2
22.	CY	- 2.6%	FI	- 4
23.	RO	- 2.6%	SE	- 5
24.	BG	- 2.9%	FR	- 26
25.	HR	- 3.8%	NL	- 30
26.	MT	- 7.4%	DE	- 56
EU		- 0.2%	EU	- 26

rem: LU not included (confidential data)

EU Milk Deliveries compared to last period (in %)

(Jan 2024 / Jan 2023)



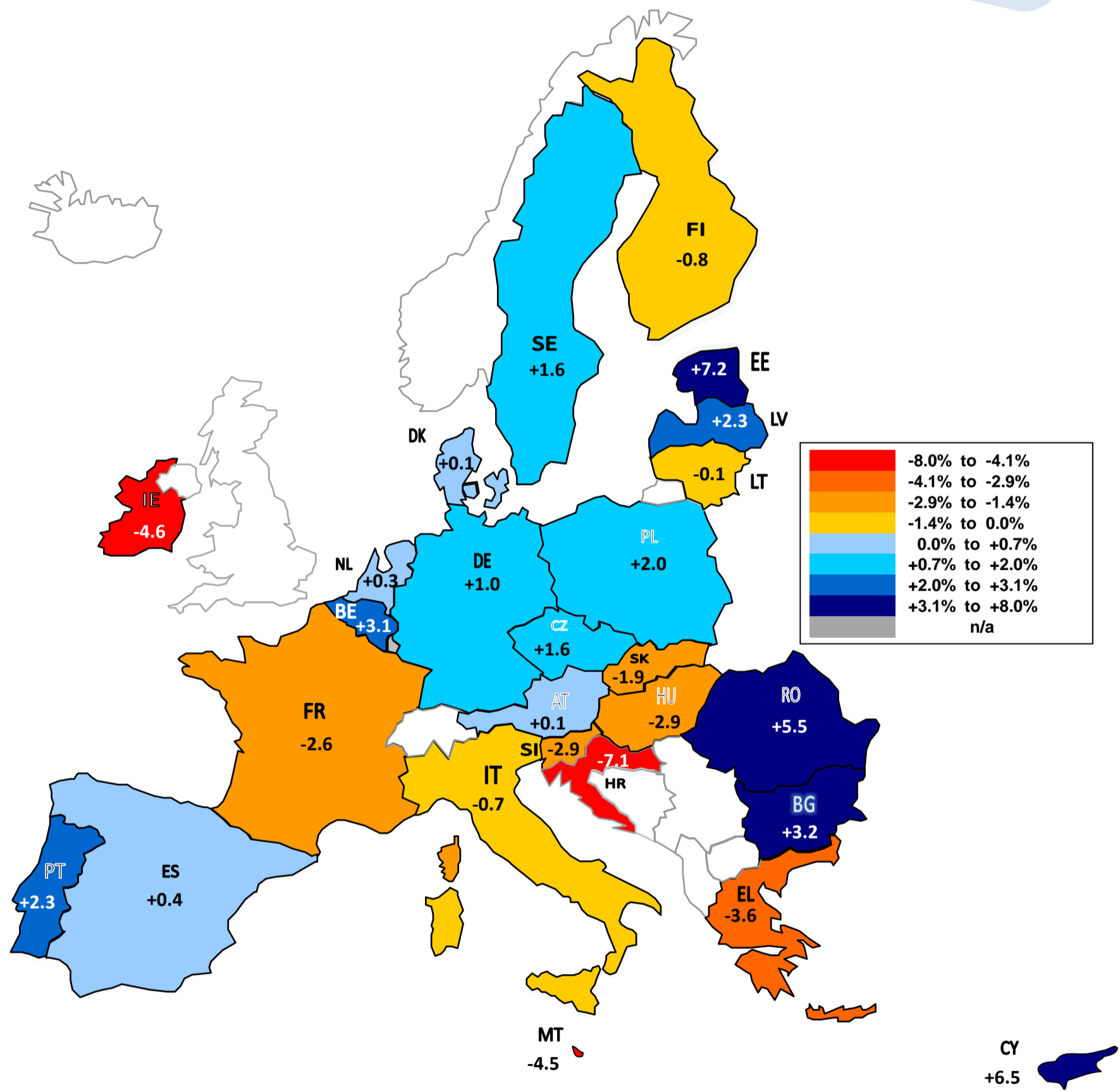
Source : MS' Communications to Eurostat, FEAGA, AGEA, Reg.479/2010.1(a)1

The designations employed and the presentation of material on the map do not imply the expression of any opinion whatsoever on the part of the European Union concerning the legal status of any country, territory or area or of its authorities, or concerning the delimitation of its frontiers or boundaries.

EU Milk Deliveries compared to last period (in %)

(Feb 2023 - Jan 2024 / Feb 2022 - Jan 2023)

Last 12 months



Source : MS' Communications to Eurostat, FEQA, AGEA, Reg.479/2010.1(a)1

The designations employed and the presentation of material on the map do not imply the expression of any opinion whatsoever on the part of the European Union concerning the legal status of any country, territory or area or of its authorities, or concerning the delimitation of its frontiers or boundaries.