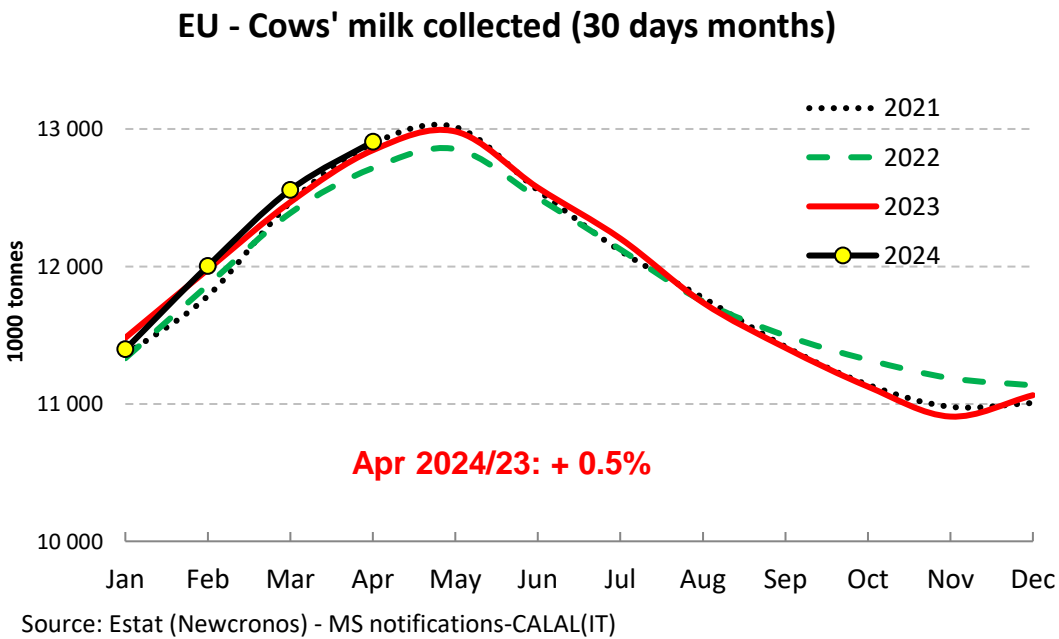
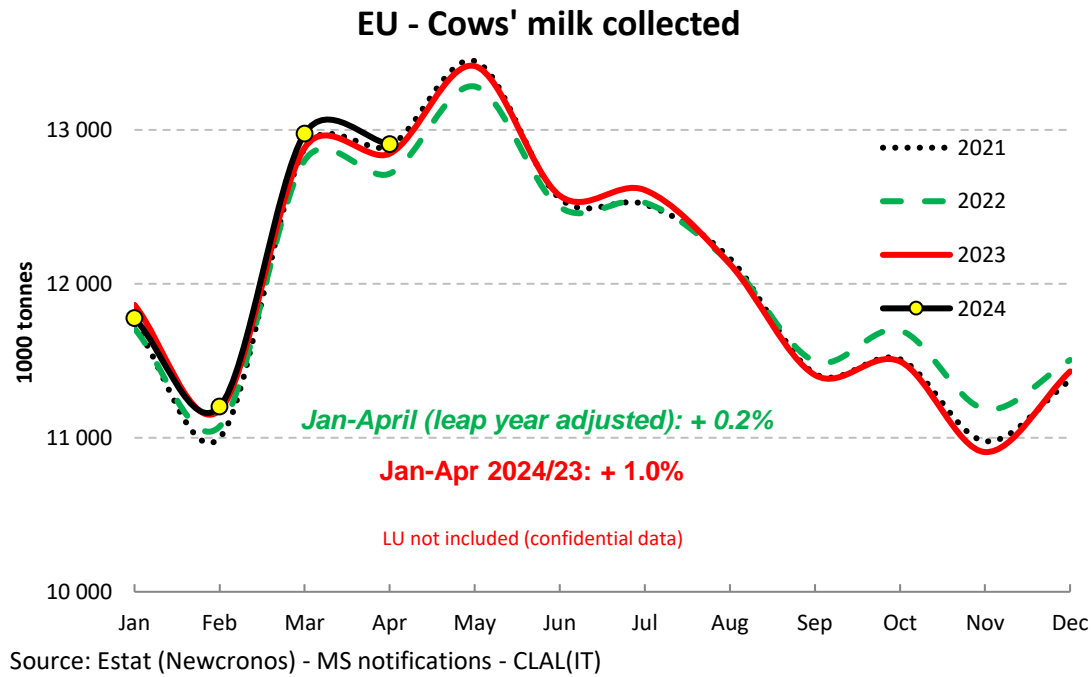
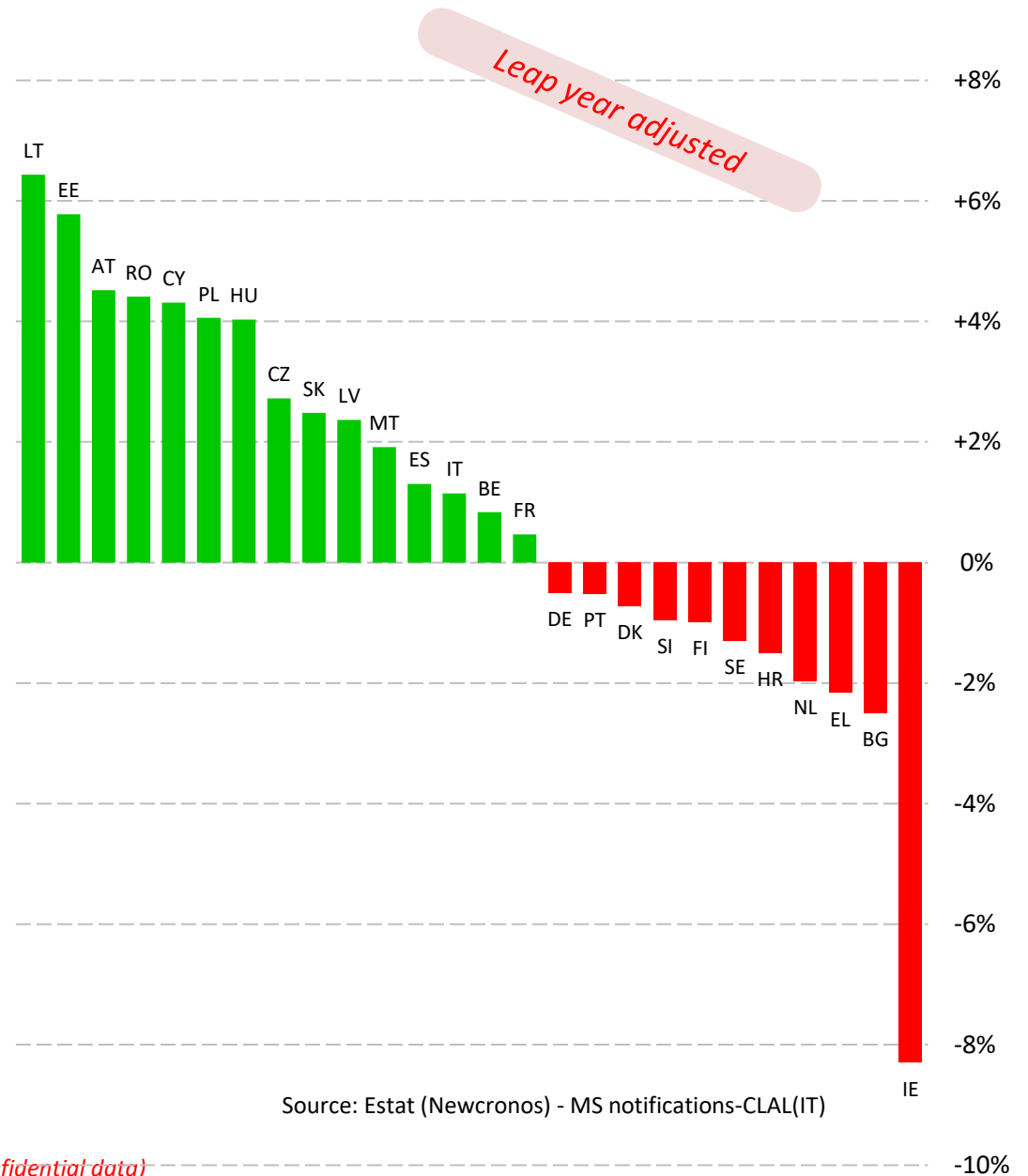


## EU Cow's Milk collected



### Cows' milk collected

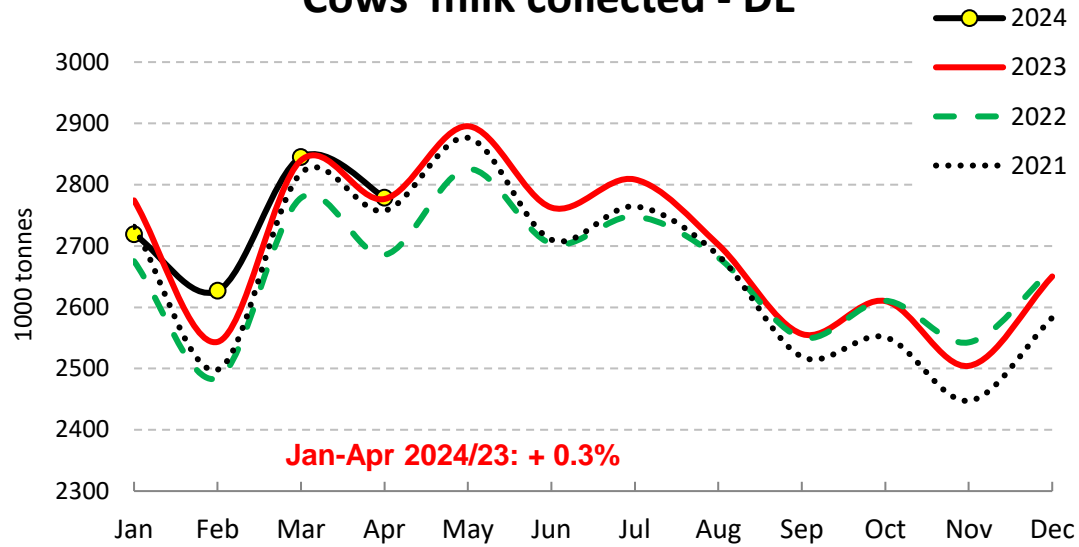
2024/23 Jan-Apr (y/y % chg)



Rem: not including LU (confidential data)

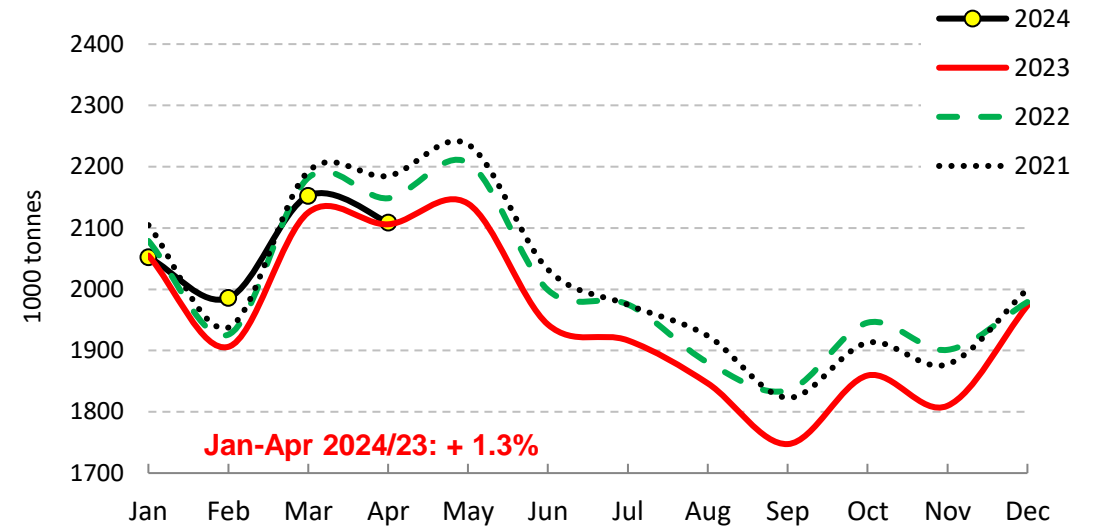
## EU Cows' milk collected - MAIN PRODUCERS (1/2)

### Cows' milk collected - DE



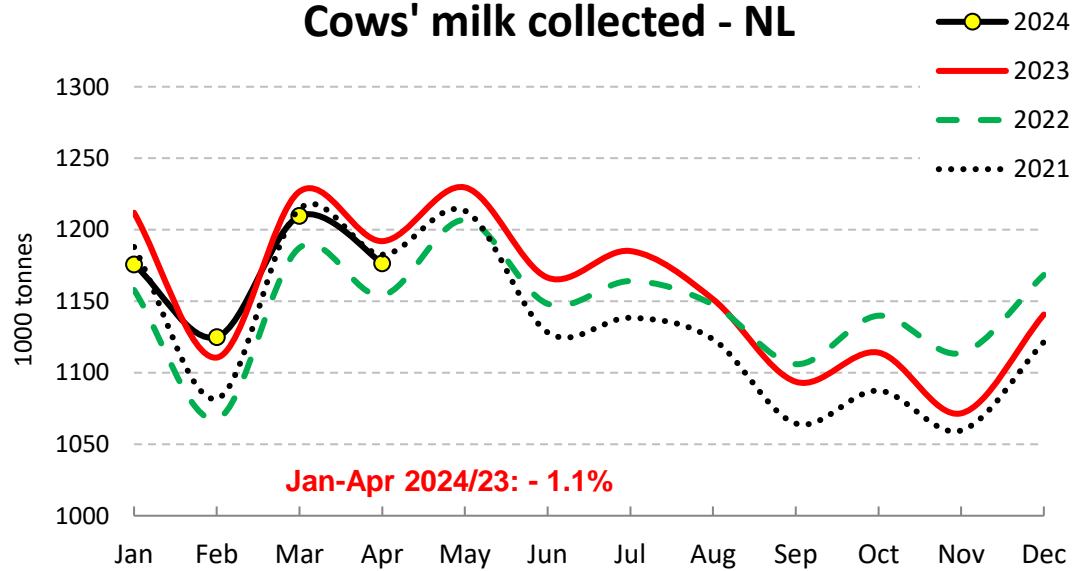
Source : Estat, Newcronos

### Cows' milk collected - FR



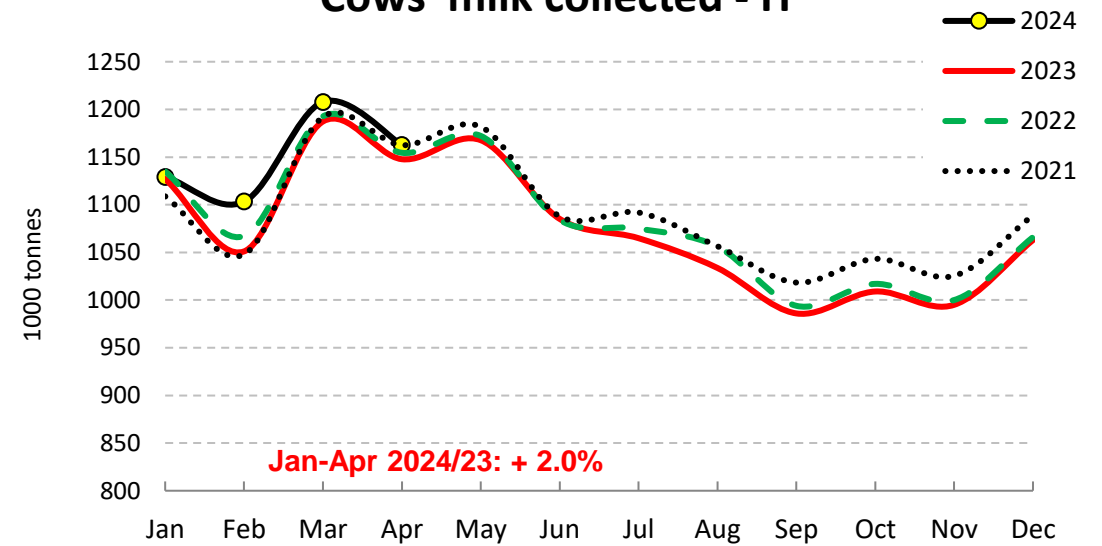
Source : Estat, Newcronos

### Cows' milk collected - NL



Source : Estat, Newcronos

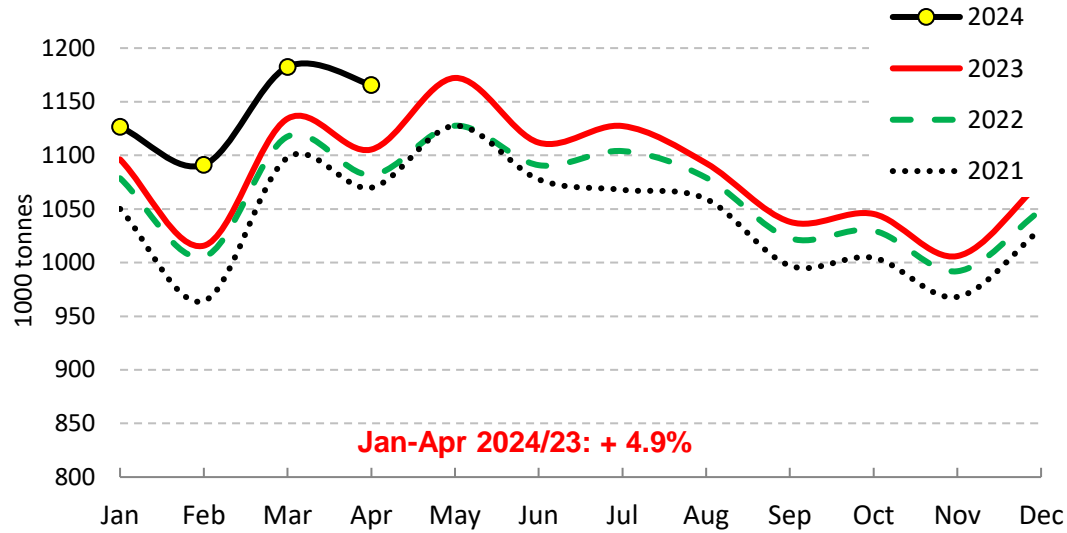
### Cows' milk collected - IT



Source: Estat, Newcronos, CLAL

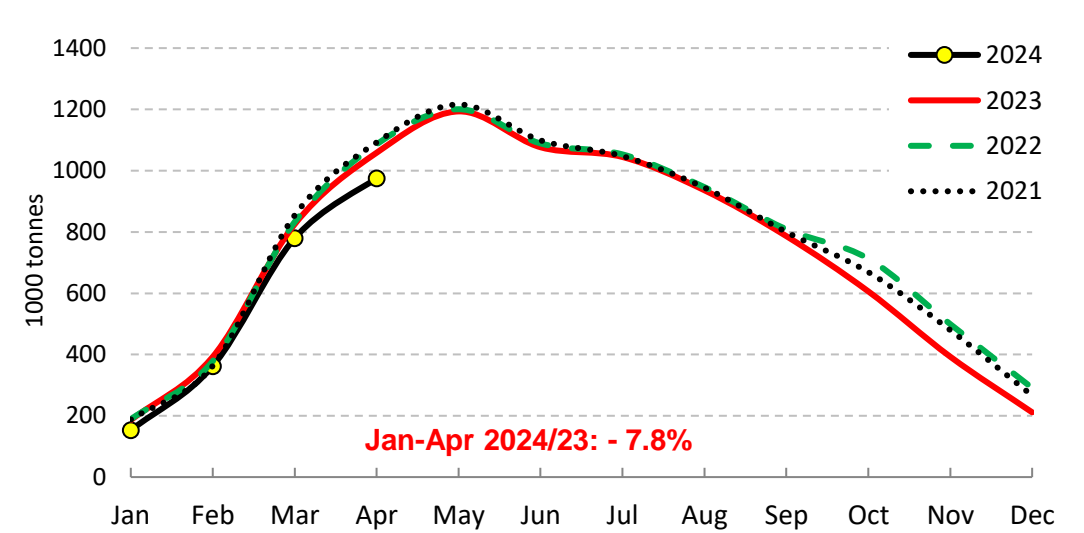
## EU Cows' milk collected - MAIN PRODUCERS (2/2)

### Cows' milk collected - PL



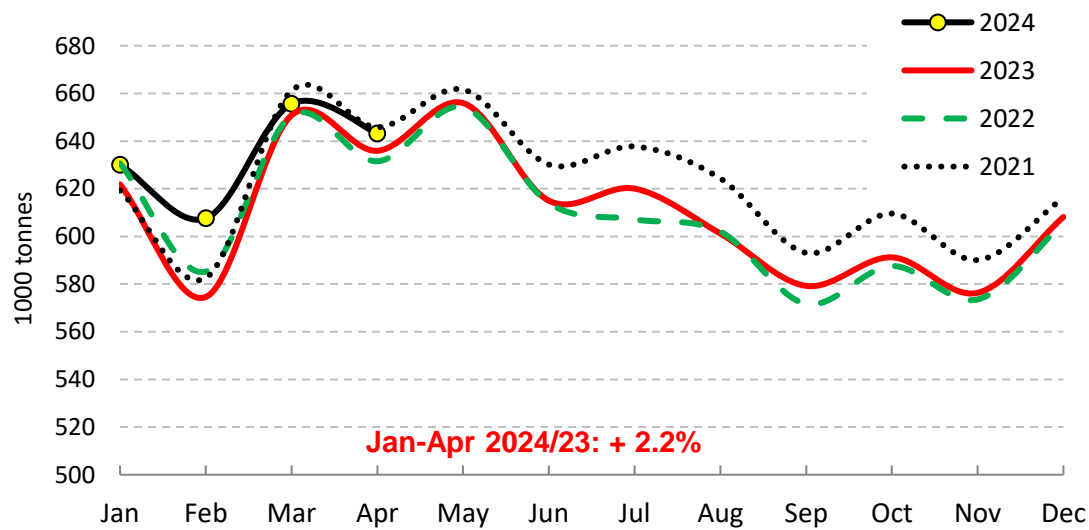
Source : Estat, Newcronos , AGEA

### Cows' milk collected - IE



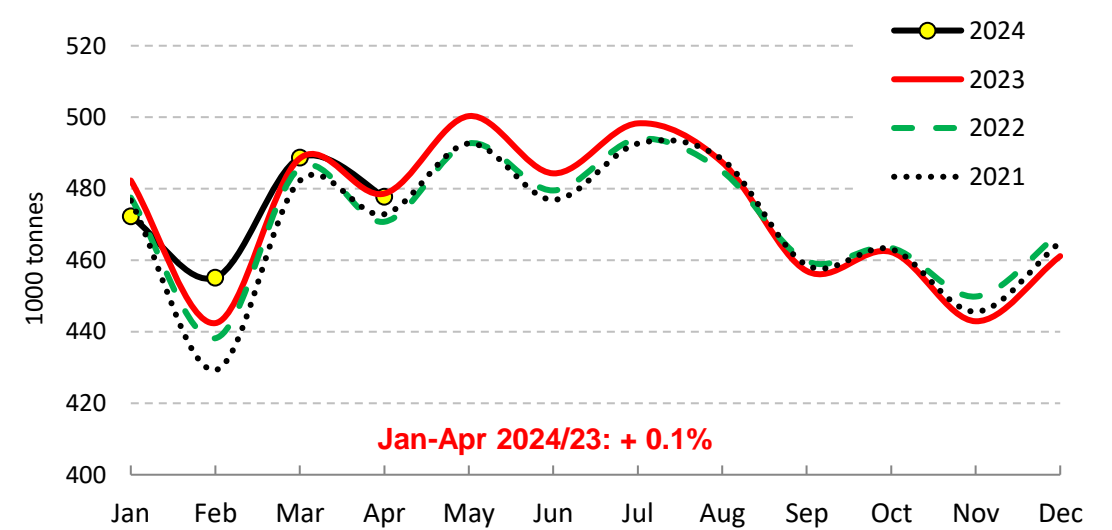
Source : Estat, Newcronos

### Cows' milk collected - ES



Source : Estat, Newcronos

### Cows' milk collected - DK



Source : Estat, Newcronos

# EU Cow's Milk collected

comparison of the last available month with the same month of the previous year

Apr 24 compared to Apr 23				
Rank	evolution in %		evolution in 1000 Tons	
	MS	%	MS	Tons
1.	HU	+ 9.7%	PL	+ 60
2.	RO	+ 9.0%	AT	+ 18
3.	LT	+ 8.1%	IT	+ 15
4.	EE	+ 6.7%	HU	+ 14
5.	AT	+ 6.0%	CZ	+ 13
6.	PL	+ 5.4%	RO	+ 9
7.	CZ	+ 4.6%	LT	+ 8
8.	LV	+ 4.1%	ES	+ 7
9.	CY	+ 3.9%	BE	+ 6
10.	SK	+ 3.9%	EE	+ 5
11.	MT	+ 3.4%	FR	+ 3
12.	BG	+ 2.6%	SK	+ 3
13.	HR	+ 1.9%	LV	+ 3
14.	BE	+ 1.4%	DE	+ 2
15.	IT	+ 1.3%	BG	+ 2
16.	EL	+ 1.2%	CY	+ 1
17.	ES	+ 1.1%	EL	+ 1
18.	FR	+ 0.1%	HR	+ 1
19.	SI	+ 0.1%	MT	+ 0
20.	DE	+ 0.1%	SI	+ 0
21.	DK	- 0.2%	DK	- 1
22.	FI	- 1.0%	FI	- 2
23.	SE	- 1.2%	SE	- 3
24.	NL	- 1.3%	PT	- 4
25.	PT	- 2.2%	NL	- 15
26.	IE	- 7.9%	IE	- 83
EU		+ 0.5%	EU	+ 61

Apr 23 compared to Apr 22				
Rank	evolution in %		evolution in 1000 Tons	
	MS	%	MS	Tons
1.	RO	+ 13.7%	DE	+ 91
2.	CY	+ 8.5%	NL	+ 38
3.	EE	+ 7.0%	PL	+ 24
4.	BG	+ 5.9%	BE	+ 19
5.	BE	+ 4.9%	RO	+ 12
6.	DE	+ 3.4%	DK	+ 8
7.	NL	+ 3.3%	SE	+ 6
8.	SE	+ 2.8%	EE	+ 5
9.	LV	+ 2.8%	ES	+ 4
10.	PT	+ 2.6%	PT	+ 4
11.	PL	+ 2.2%	BG	+ 3
12.	DK	+ 1.7%	CZ	+ 3
13.	CZ	+ 1.3%	CY	+ 2
14.	ES	+ 0.7%	LV	+ 2
15.	AT	+ 0.2%	AT	+ 0
16.	IT	- 0.6%	MT	- 0
17.	FI	- 1.2%	EL	- 1
18.	EL	- 1.6%	SI	- 1
19.	FR	- 2.0%	SK	- 1
20.	SK	- 2.1%	HR	- 2
21.	SI	- 2.5%	FI	- 2
22.	IE	- 2.5%	LT	- 3
23.	LT	- 2.7%	HU	- 5
24.	HU	- 3.5%	IT	- 7
25.	HR	- 6.0%	IE	- 27
26.	MT	- 6.4%	FR	- 42
EU		+ 1.0%	EU	+ 130

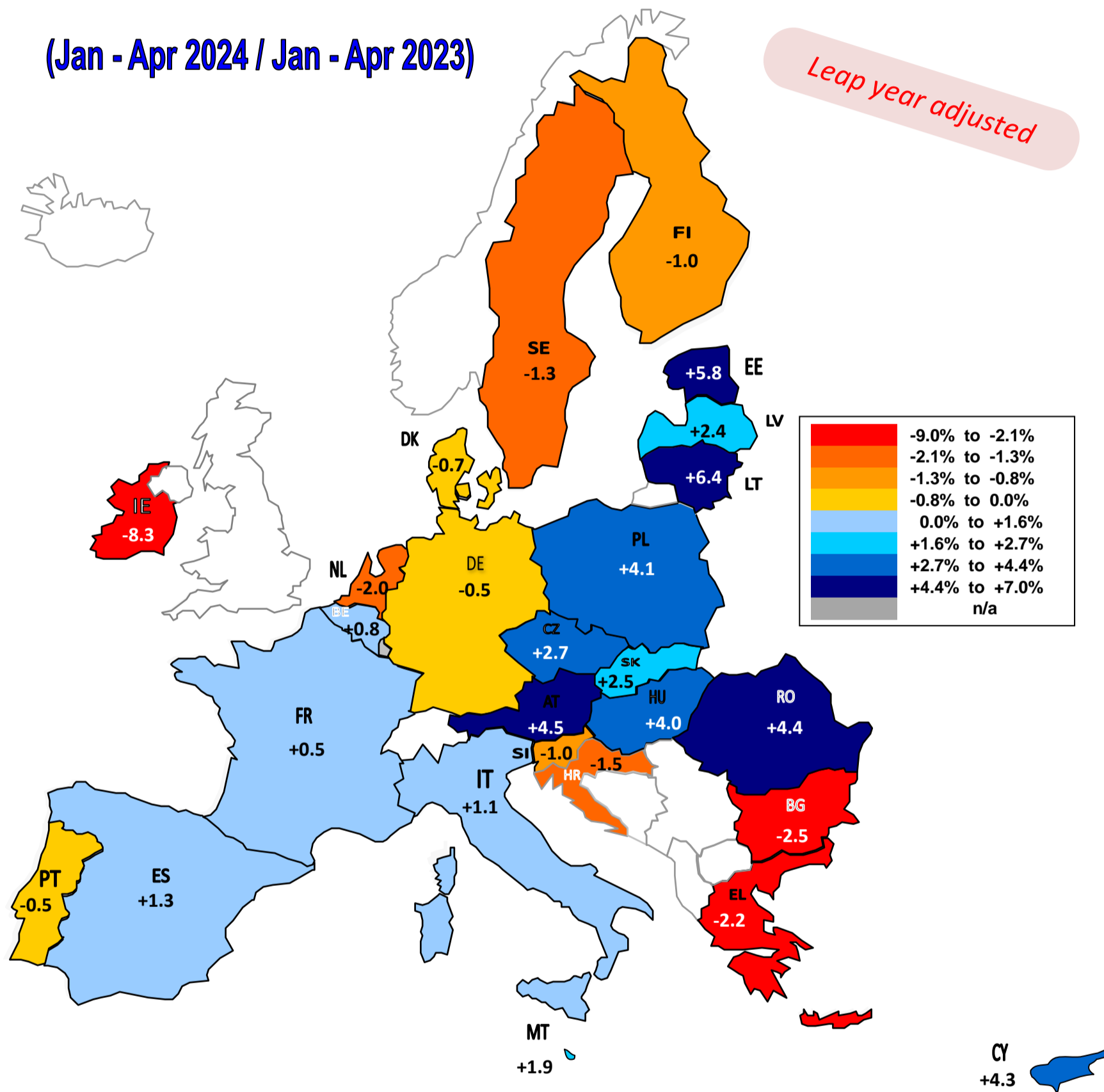
Apr 22 compared to Apr 21				
Rank	evolution in %		evolution in 1000 Tons	
	MS	%	MS	Tons
1.	AT	+ 3.7%	PL	+ 12
2.	LT	+ 2.2%	AT	+ 10
3.	CZ	+ 1.3%	CZ	+ 3
4.	PL	+ 1.1%	LT	+ 2
5.	LV	+ 0.7%	LV	+ 0
6.	EE	+ 0.5%	EE	+ 0
7.	BE	+ 0.1%	BE	+ 0
8.	DK	- 0.4%	MT	- 0
9.	IE	- 0.6%	SK	- 1
10.	IT	- 0.7%	SI	- 1
11.	SK	- 1.0%	EL	- 1
12.	FR	- 1.7%	CY	- 2
13.	SI	- 2.1%	DK	- 2
14.	EL	- 2.2%	HR	- 2
15.	ES	- 2.2%	PT	- 4
16.	NL	- 2.4%	HU	- 5
17.	PT	- 2.5%	RO	- 5
18.	SE	- 2.6%	BG	- 6
19.	DE	- 2.6%	FI	- 6
20.	FI	- 3.1%	IE	- 6
21.	HU	- 3.1%	SE	- 6
22.	RO	- 5.6%	IT	- 8
23.	CY	- 6.0%	ES	- 14
24.	HR	- 6.6%	NL	- 28
25.	MT	- 7.0%	FR	- 36
26.	BG	- 8.7%	DE	- 72
EU		- 1.4%	EU	- 178

rem: LU not included (confidential data)

# EU Milk Deliveries compared to last period (in %)

(Jan - Apr 2024 / Jan - Apr 2023)

Leap year adjusted



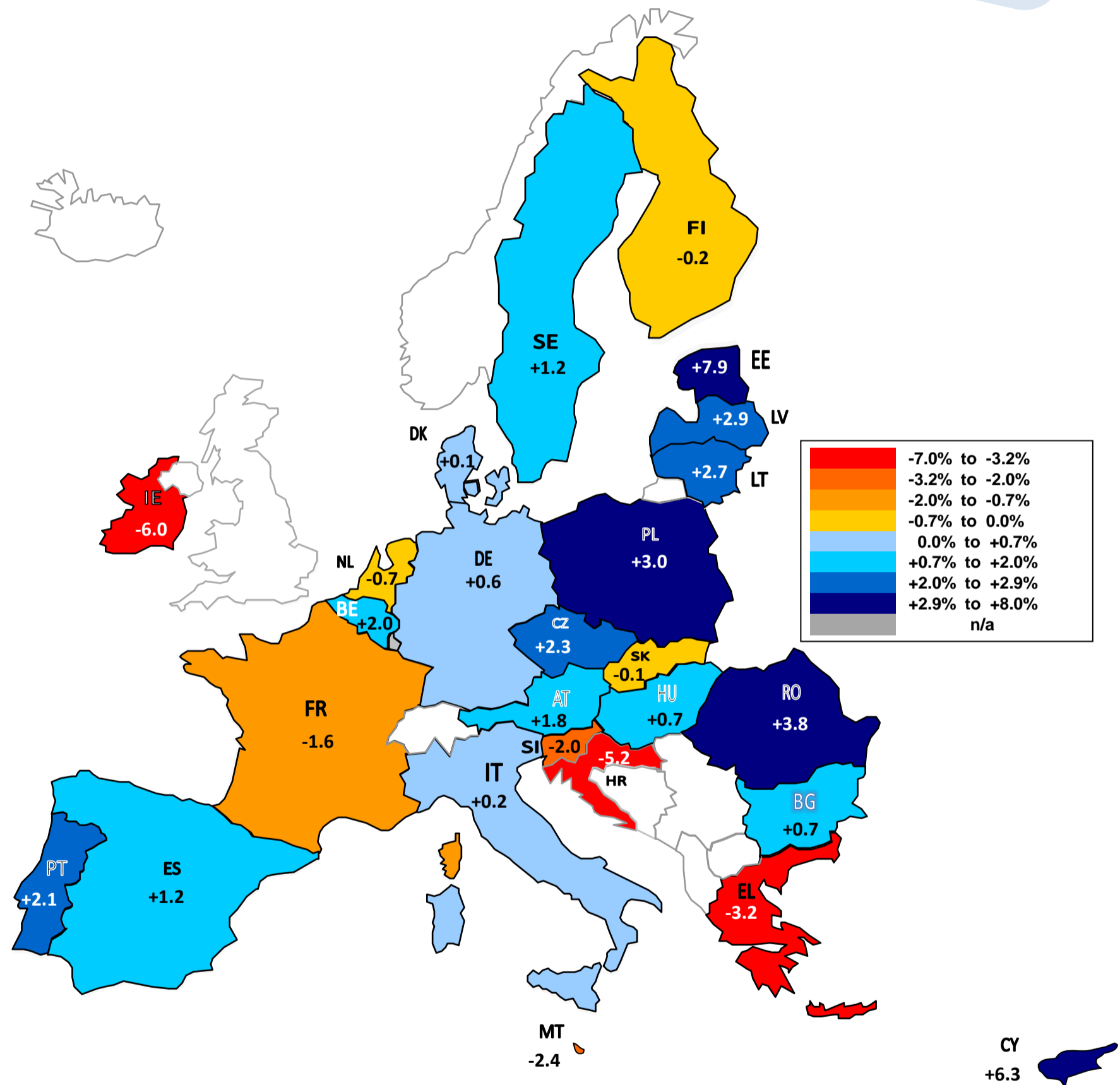
Source : MS' Communications to Eurostat, FEAGA, AGEA, Reg.479/2010.1(a)1

The designations employed and the presentation of material on the map do not imply the expression of any opinion whatsoever on the part of the European Union concerning the legal status of any country, territory or area or of its authorities, or concerning the delimitation of its frontiers or boundaries.

# EU Milk Deliveries compared to last period (in %)

( May 2023 - Apr 2024 / May 2022 - Apr 2023)

Last 12 months



Source : MS' Communications to Eurostat, FEAGA, AGEA, Reg.479/2010.1(a)1

The designations employed and the presentation of material on the map do not imply the expression of any opinion whatsoever on the part of the European Union concerning the legal status of any country, territory or area or of its authorities, or concerning the delimitation of its frontiers or boundaries.