

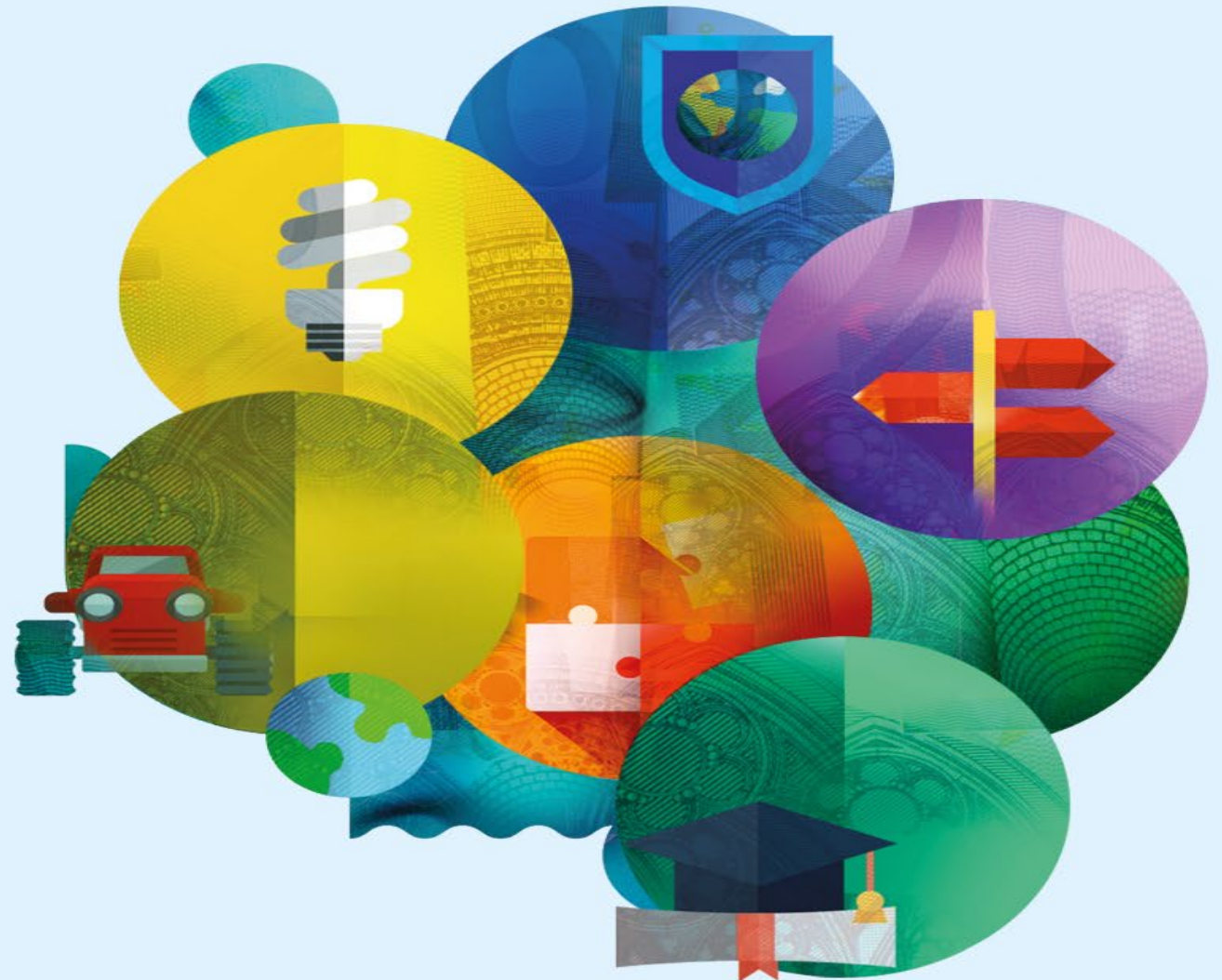
COMMON AGRICULTURAL POLICY

post-2020

*Landscape features, notably
trees, in agricultural parcels:
overview of eligibility related
rules*

**DG Agriculture and Rural
Development**

CDG Direct Payments and Greening
18 March 2022



More flexibility under the New Framework

- Current system (R.1307/2013 / R.1306/2013):
 - Detailed rules set at EU level in the basic act and delegated acts;
 - EU rules explicit on elements that MS must define and frame is strict.

- Strategic Plan regulation (SPR) (R. 2021/2115):
 - Focus on further improving the performance of the CAP in terms of economic, environment and social ambition;
 - Less details in EU legislation (only basic act, except for hemp);
 - More possibilities for MS to adapt rules to local specificities.

More flexibility to MS under Pillar I

Rule/framework	Current legal framework	Strategic Plan Regulation (SPR)
Agroforestry systems on agricultural areas	<ul style="list-style-type: none"> - No explicit rules; - Limit of 100 scattered trees. 	<ul style="list-style-type: none"> - Part of agricultural area; - for MS to define.
Permanent grassland definition	Pre-defined and certain limits, e.g. predominance of grass requirement.	For MS to: <ul style="list-style-type: none"> - define grass; - decide on inclusion of 'productive' shrubs/trees*
Other landscape features not under GAEC	Limits defined: <ul style="list-style-type: none"> - 100 m2 (LPIS guidelines); - 100 trees; - 2 m width of hedges, ditches. 	<ul style="list-style-type: none"> - No explicit limits; - For MS to define characteristics (e.g. size/width, parcel coverage).
Minimum share of AL under non-productive features/areas	Not included, but similar under Greening (EFA).	<ul style="list-style-type: none"> - For MS to define features/areas; - No agricultural activity requested.
Pro-rata application on PG	Pre-defined % of minimum reduction	<ul style="list-style-type: none"> - For MS to define principles on the area reduction.

Agroforestry systems in agricultural area in the SPR

➤ The aim:

- To protect existing systems;
- To incentivize the establishment of new systems.

➤ Possibilities:

- Criteria defined by MS could include elements such as: types of trees, maximum size, density (in relation to pedo-climatic conditions or management practices);
- Can be different per type of agricultural area;
- Non-agricultural areas, such as (occasionally grazed) forests could be supported under Pillar II.

Trees in definition of 'eligible hectare' and 'agricultural activity' in the SPR

➤ The aim:

- Balance between agricultural activity and the protection of LF, including trees.

➤ Eligible hectare:

- LF, including trees, not protected under GAEC – can be part of eligible hectare if:
 - Do not (significantly) hamper the agricultural activity;
 - Are not predominant.
- Link to GAEC 8 – trees subject to GAEC 8 retention / minimum share – part of eligible ha.

➤ Agricultural activity:

- Maintenance criteria to ensure adequate agricultural activity (no spontaneous trees/shrubs).