



# Animal Feed Market Situation

**Civil Dialogue Group on Animal Products**

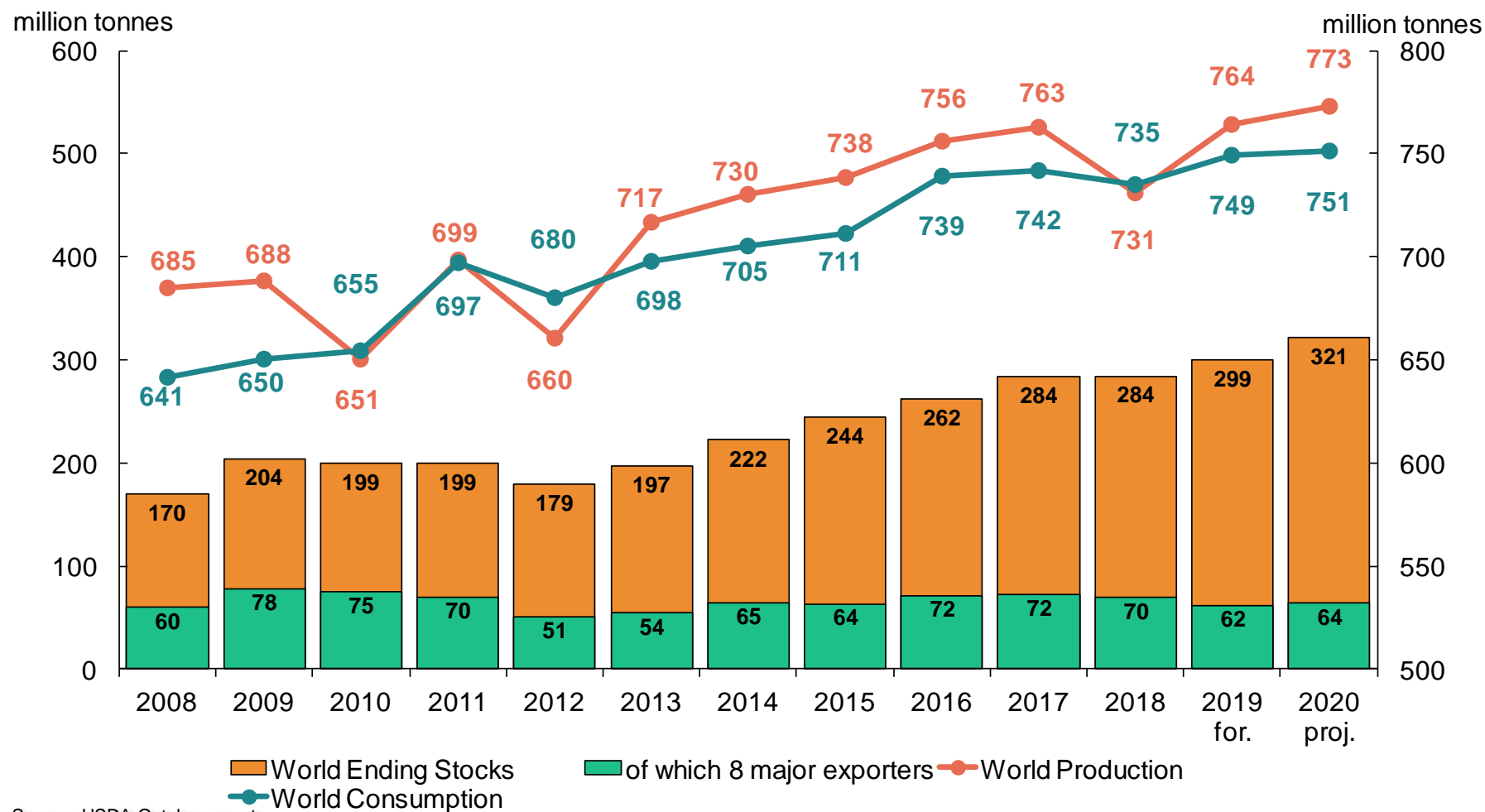
***Pig Meat Sector***

**DG AGRI G.4.**

*30 October 2020*

# World Cereals Forecasts and Prices

# World wheat: USDA



Source: USDA October report

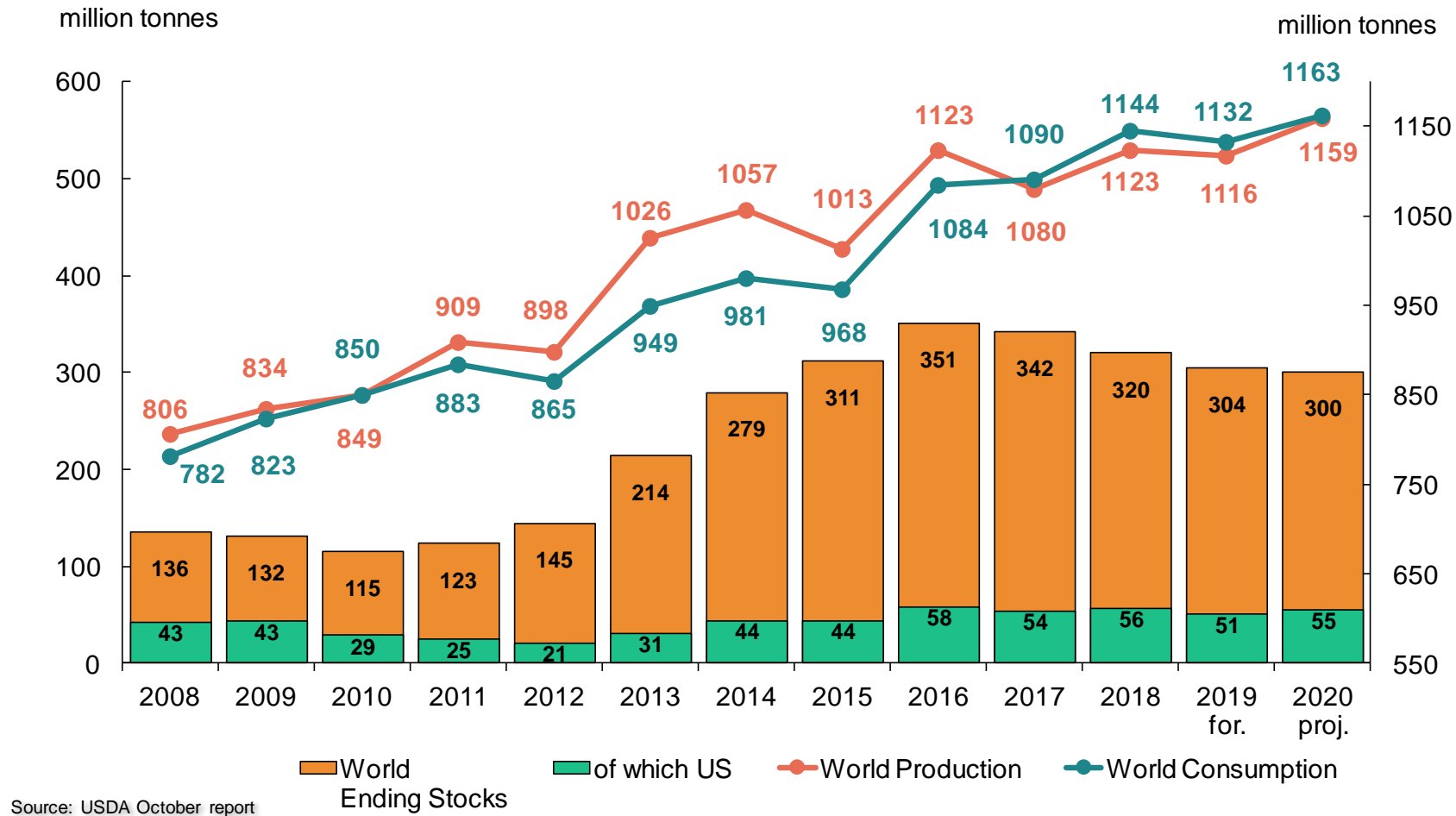
# USDA 2020/21 Supply and Demand Estimates

(WASDE – 605 of 9 October 2020)

Wheat production forecasts in selected countries (all wheat; million tonnes)

|            | 2020/21 | Share of total | 2019/20 | m/m change<br>(m t) | y/y change (%) |
|------------|---------|----------------|---------|---------------------|----------------|
| EU-27 + UK | 136.8   | 17.7%          | 154.9   | +0.6                | -11.7%         |
| USA        | 49.7    | 6.4%           | 52.6    | -0.3                | -5.5%          |
| Canada     | 35.0    | 4.5%           | 32.4    | -1.0                | +8.2%          |
| Russia     | 83.0    | 10.7%          | 73.6    | +5.0                | +12.8%         |
| Ukraine    | 25.5    | 3.3%           | 29.2    | -1.5                | -12.6%         |
| Australia  | 28.5    | 3.7%           | 15.2    | -                   | +87.5%         |
| Argentina  | 19.0    | 2.5%           | 19.8    | -0.5                | -3.8%          |
| China      | 136.0   | 17.6%          | 133.6   | -                   | +1.8%          |
| India      | 107.6   | 13.9%          | 103.6   | -                   | +3.9%          |
| World      | 773.1   | 100.0%         | 764.5   | +2.6                | +1.1%          |

# World maize: USDA



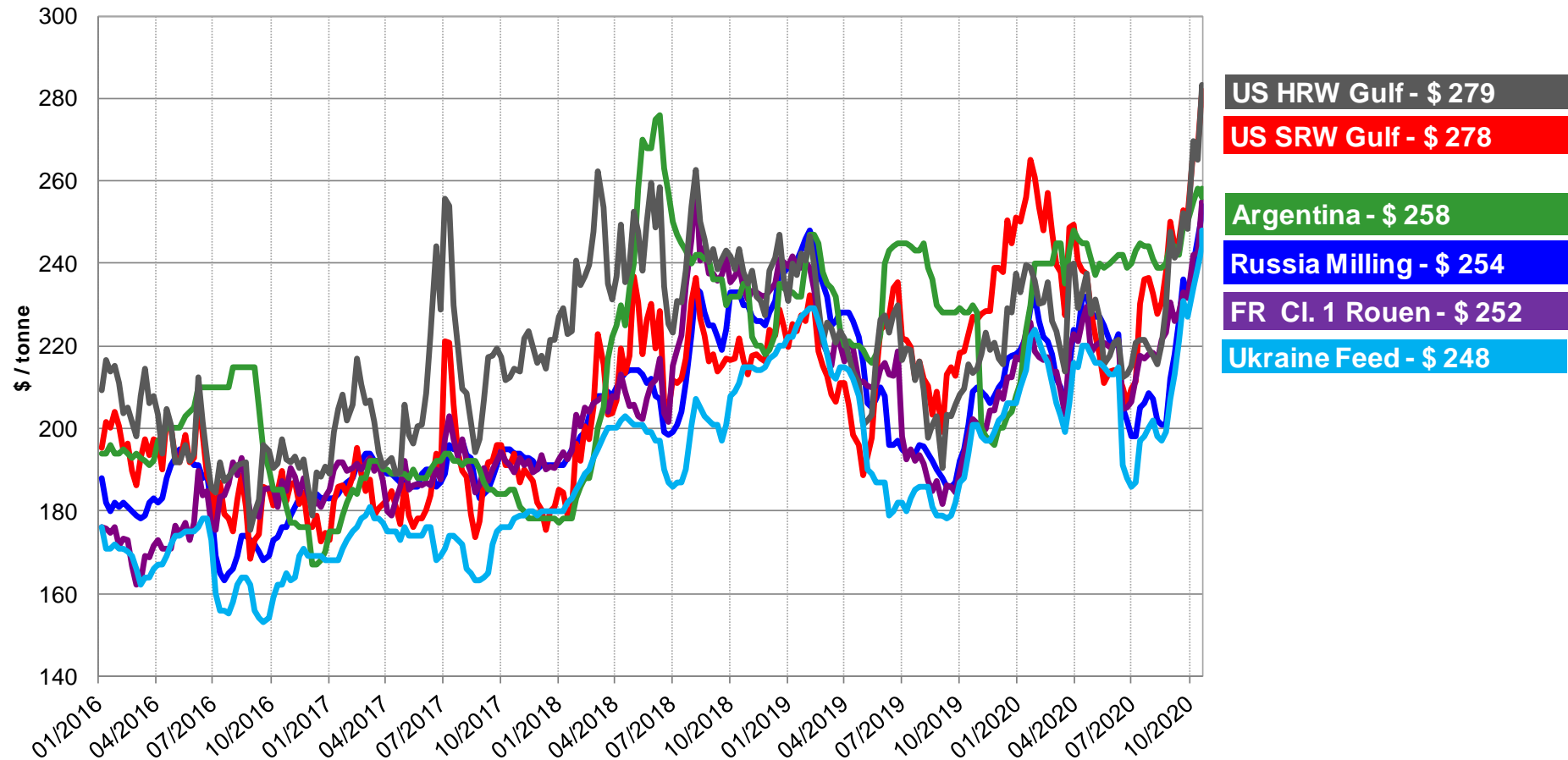
# USDA 2020/21 Supply and Demand Estimates

(WASDE – 605 of 9 October 2020)

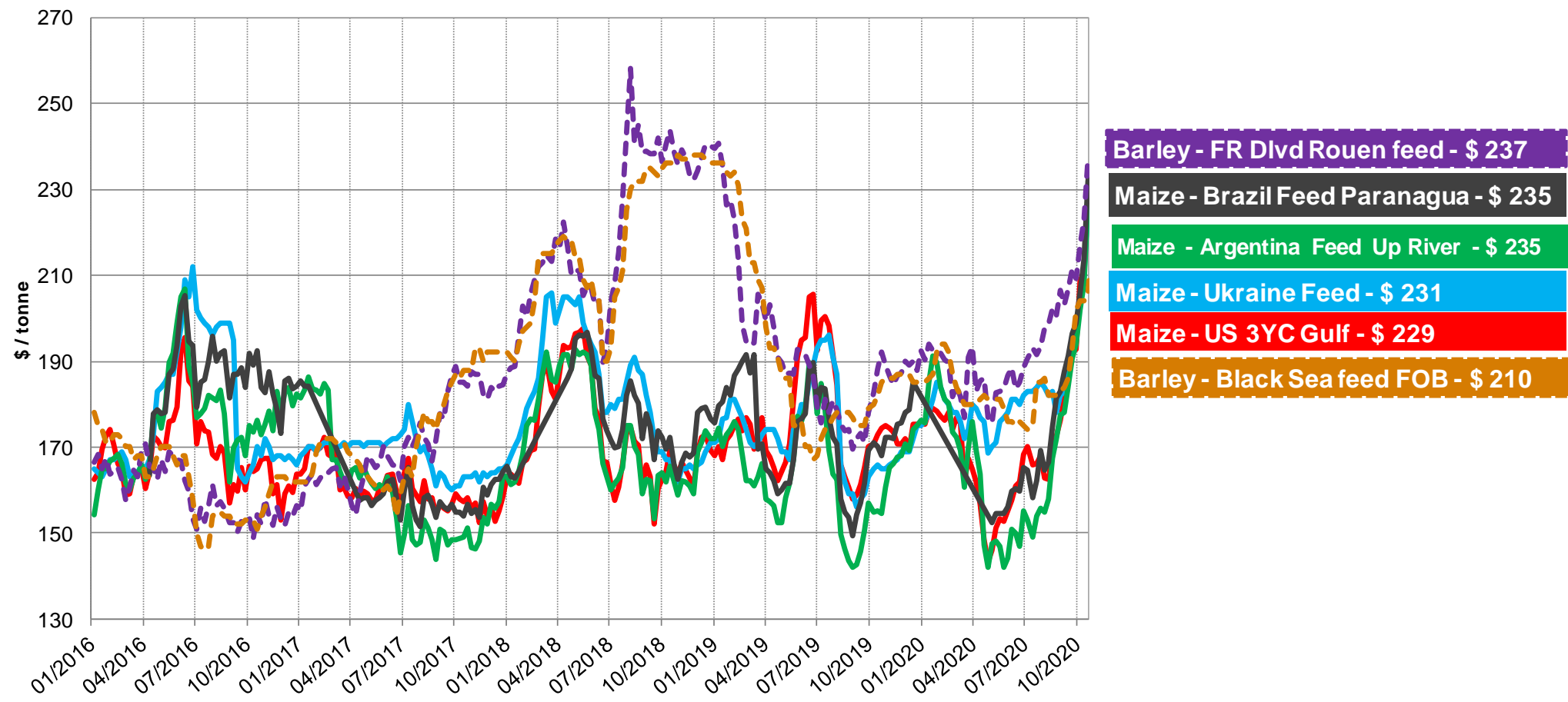
## Maize production forecasts in selected countries (million tonnes)

|              | 2020/21 | Share of total | 2019/20          | m/m change<br>(m t) | y/y change (%) |
|--------------|---------|----------------|------------------|---------------------|----------------|
| EU-27 + UK   | 66.1    | 5.7%           | 66.7             | -0.2                | -0.9%          |
| USA          | 374.0   | 32.3%          | 346.0            | -4.5                | +8.1%          |
| Ukraine      | 36.5    | 3.1%           | 35.9             | -2.0                | +1.7%          |
| Russia       | 15.0    | 1.3%           | 14.3             | -                   | +5.1%          |
| Brazil       | 110.0   | 9.5%           | 102.0            | -                   | +7.8%          |
| Argentina    | 50.0    | 4.3%           | 51.0 (+1.0m m/m) | -                   | -2.0%          |
| China        | 260.0   | 22.4%          | 260.8            | -                   | -0.3%          |
| South Africa | 14.0    | 1.2%           | 16.3             | -                   | -13.9%         |
| World        | 1,158.8 | 100%           | 1,116.3 (+3.5m)  | -3.6                | +3.8%          |

# World common wheat prices (\$/t)

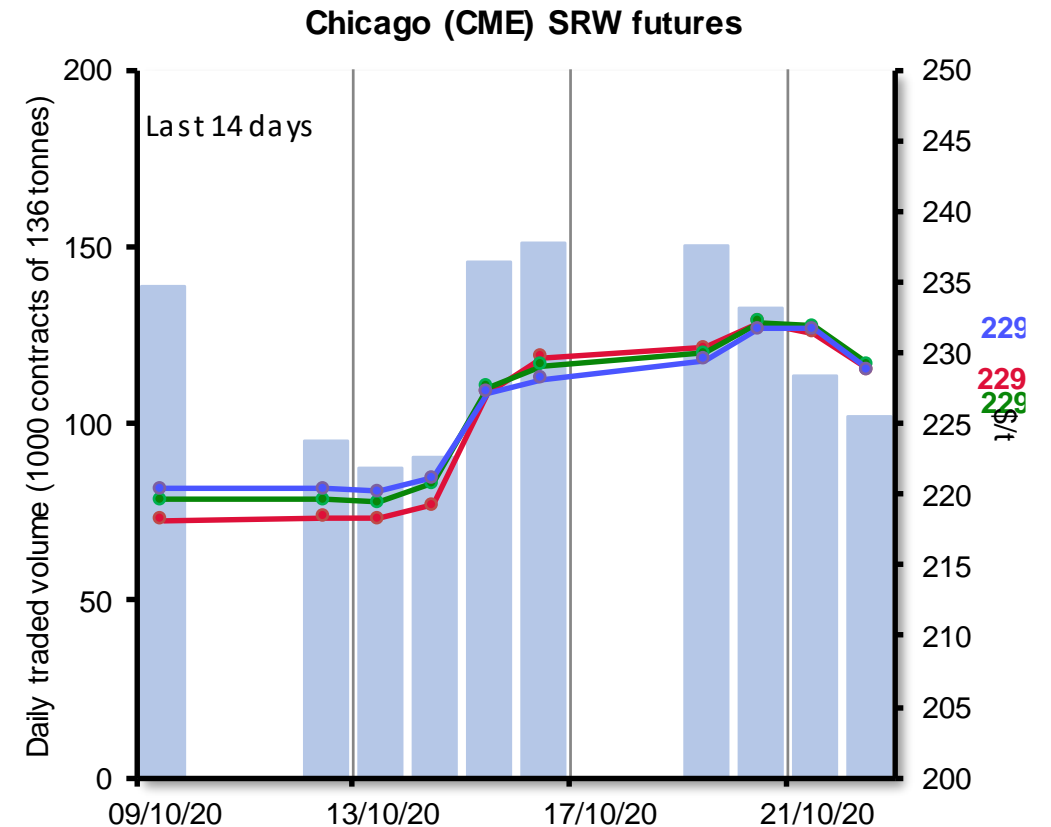
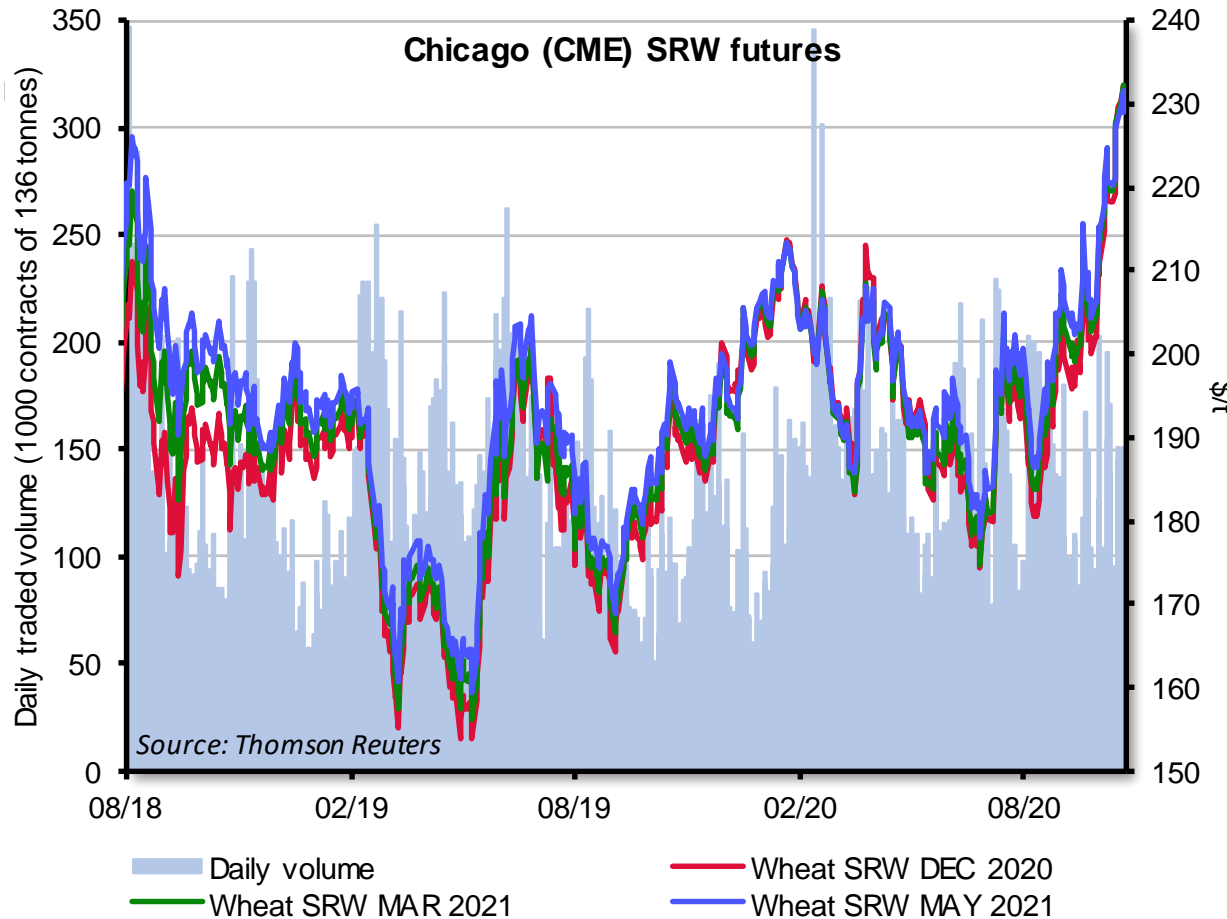


# World maize and barley prices (\$/t)

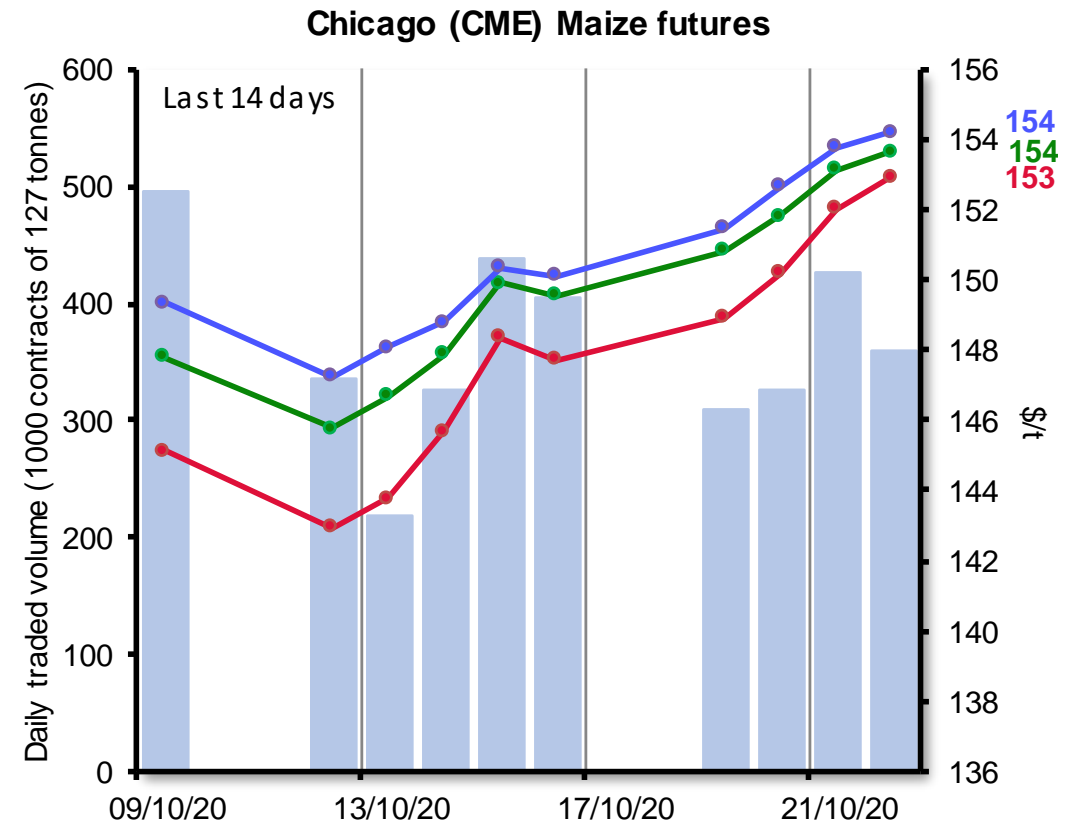
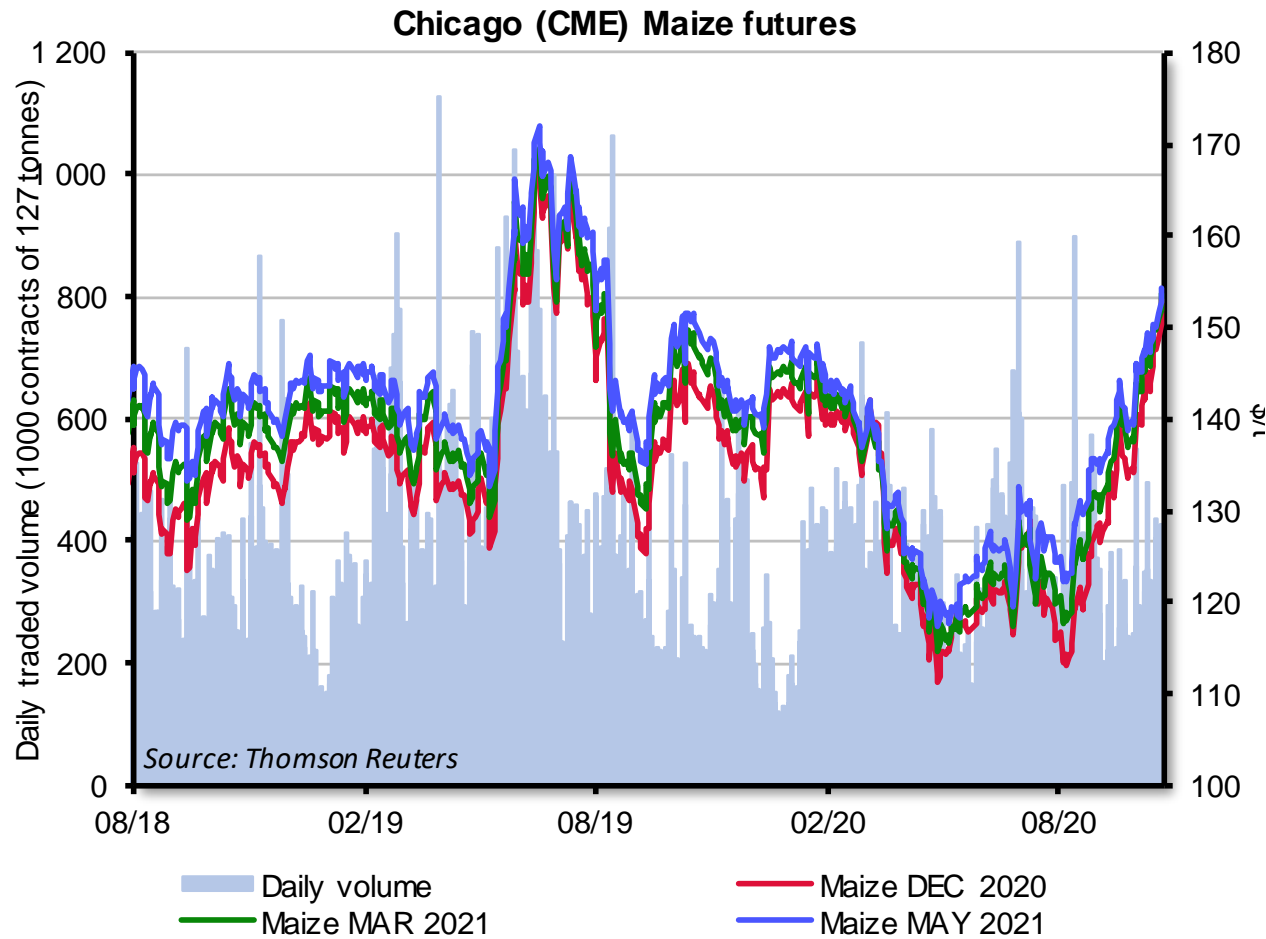




# US CME SRW wheat futures



# CME maize futures



# EU Cereals Forecasts, Balance Sheet and Prices

Marketing Year 2020/21

# EU : Production Forecasts

## EVOLUTION OF THE EU 27 CEREALS USABLE PRODUCTION

(million tonnes)

|              | 2018/19      | 2019/20      | 2020/21       |              |                   |
|--------------|--------------|--------------|---------------|--------------|-------------------|
|              |              |              | Sept Forecast | Oct Forecast | vs. 2019/2020 (%) |
| Soft wheat   | 114,8        | 131,2        | 115,5         | 115,9        | -11,7             |
| Durum wheat  | 8,7          | 7,4          | 7,3           | 7,2          | -2,7              |
| Barley       | 49,5         | 55,0         | 55,0          | 54,3         | -1,3              |
| Maize        | 69,0         | 70,1         | 63,1          | 60,2         | -14,1             |
| Rye          | 6,0          | 8,4          | 8,7           | 8,9          | 6,0               |
| Oats         | 6,8          | 7,1          | 8,1           | 8,1          | 14,1              |
| <b>Total</b> | <b>268,9</b> | <b>294,5</b> | <b>274,3</b>  | <b>271,5</b> | <b>-7,8</b>       |

Source: DG AGRI -G4

# EU Cereals Balance Sheet

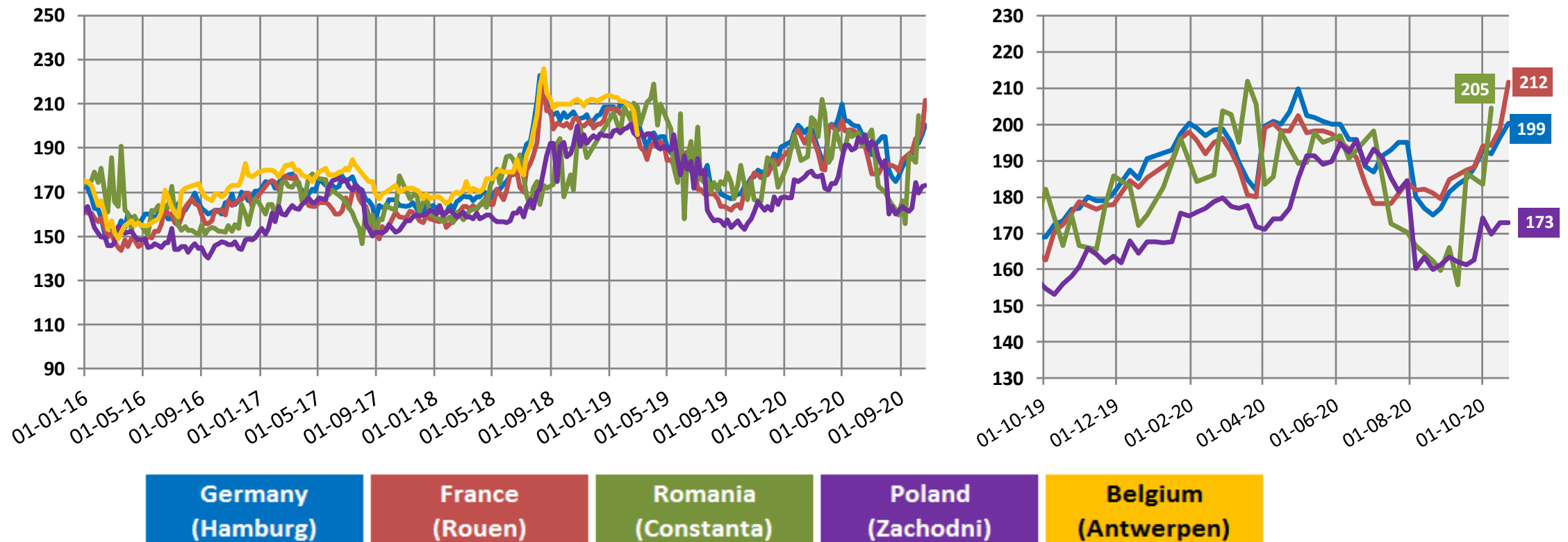
LAST UPDATED: 29/10/2020

|                                | 2020/21 (proj.) |        |             |         |       |         |       |           |        |               |
|--------------------------------|-----------------|--------|-------------|---------|-------|---------|-------|-----------|--------|---------------|
|                                | Common wheat    | Barley | Durum wheat | Maize   | Rye   | Sorghum | Oats  | Triticale | Others | TOTAL CEREALS |
| Beginning stocks               | 9.819           | 5.615  | 1.736       | 22.157  | 840   | 1.763   | 326   | 2.103     | 182    | 44.540        |
| Usable production              | 115.893         | 54.293 | 7.208       | 60.197  | 8.877 | 1.206   | 8.143 | 11.149    | 4.552  | 271.519       |
| Area (thousand ha)             | 20.802          | 11.328 | 2.165       | 8.893   | 2.177 | 228     | 2.583 | 2.650     | 1.571  | 52.397        |
| Yield (tonnes/ha)              | 6               | 5      | 3           | 7       | 4     | 5       | 3     | 4         | 3      | 5             |
| Imports (from third countries) | 3.500           | 1.000  | 2.500       | 22.000  | 45    | 100     | 55    | 1         | 161    | 29.361        |
| Total supply                   | 129.213         | 60.907 | 11.443      | 104.354 | 9.761 | 3.069   | 8.524 | 13.252    | 4.896  | 345.420       |
| Total domestic use             | 95.974          | 44.319 | 9.022       | 83.068  | 7.214 | 643     | 6.792 | 10.064    | 3.830  | 260.925       |
| Human consumption              | 41.462          | 363    | 8.083       | 4.705   | 2.961 | 155     | 992   | 52        | 23     | 58.795        |
| Seed                           | 4.600           | 2.131  | 400         | 402     | 300   | 29      | 350   | 500       | 270    | 8.981         |
| Industrial uses                | 9.717           | 6.700  | 95          | 11.100  | 1.300 |         | 101   | 445       | 170    | 29.628        |
| of which bioethanol/biofuel    | 3.740           | 437    |             | 6.164   | 700   |         |       | 344       | 14     | 11.398        |
| Animal feed                    | 39.500          | 34.800 | 400         | 66.500  | 2.600 | 452     | 5.300 | 9.000     | 3.340  | 161.892       |
| Losses                         | 695             | 326    | 43          | 361     | 53    | 7       | 49    | 67        | 27     | 1.629         |
| Exports (to third countries)   | 24.000          | 10.500 | 1.271       | 3.000   | 169   | 14      | 199   | 3         | 18     | 39.174        |
| Total use                      | 119.974         | 54.819 | 10.292      | 86.068  | 7.383 | 657     | 6.991 | 10.066    | 3.848  | 300.099       |
| Ending stocks**                | 9.238           | 6.089  | 1.151       | 18.286  | 2.378 | 2.412   | 1.533 | 3.186     | 1.048  | 45.321        |
| Change in stocks**             | -581            | 474    | -585        | -3.871  | 1.539 | 649     | 1.207 | 1.083     | 866    | 781           |

\* Marketing year: from July to June

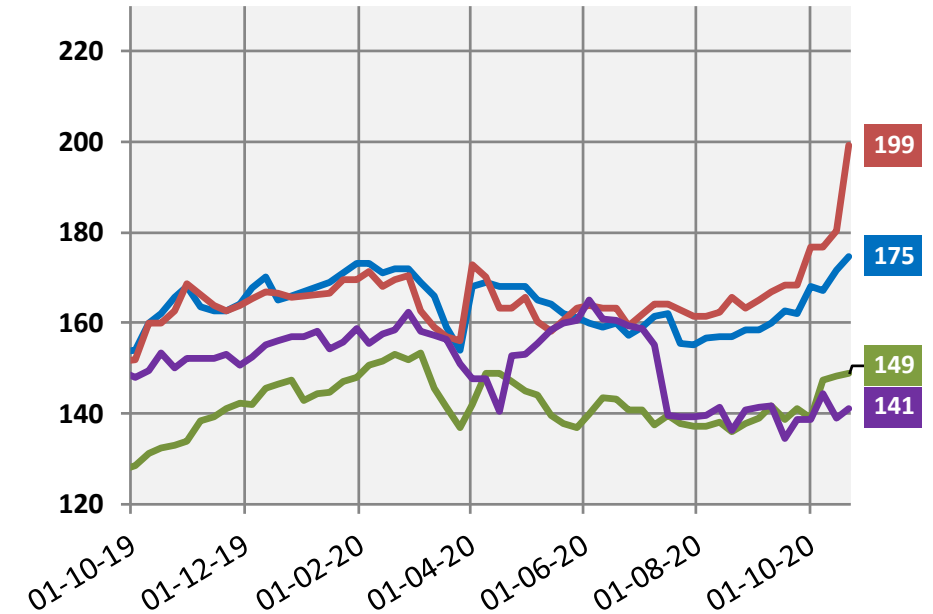
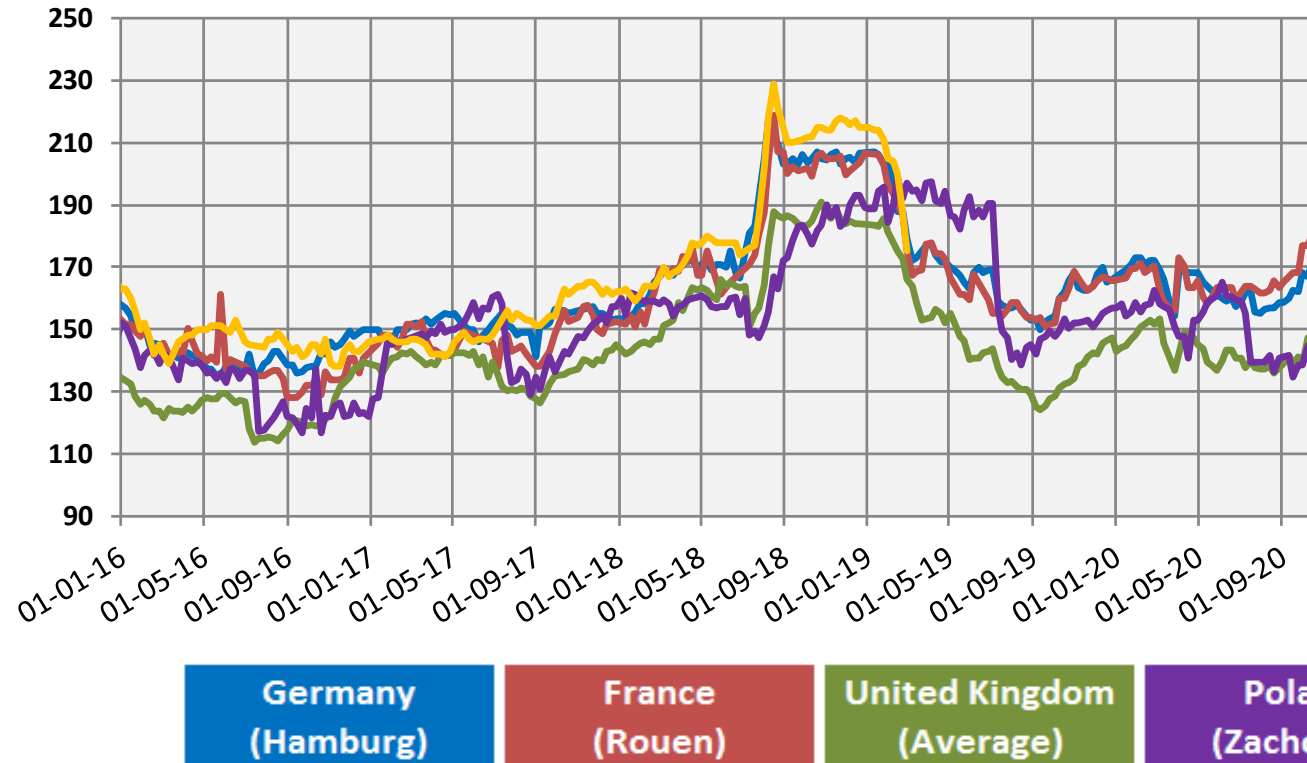
\*\* At the end of the marketing year

# EU market prices for milling wheat – (EUR per tonne)



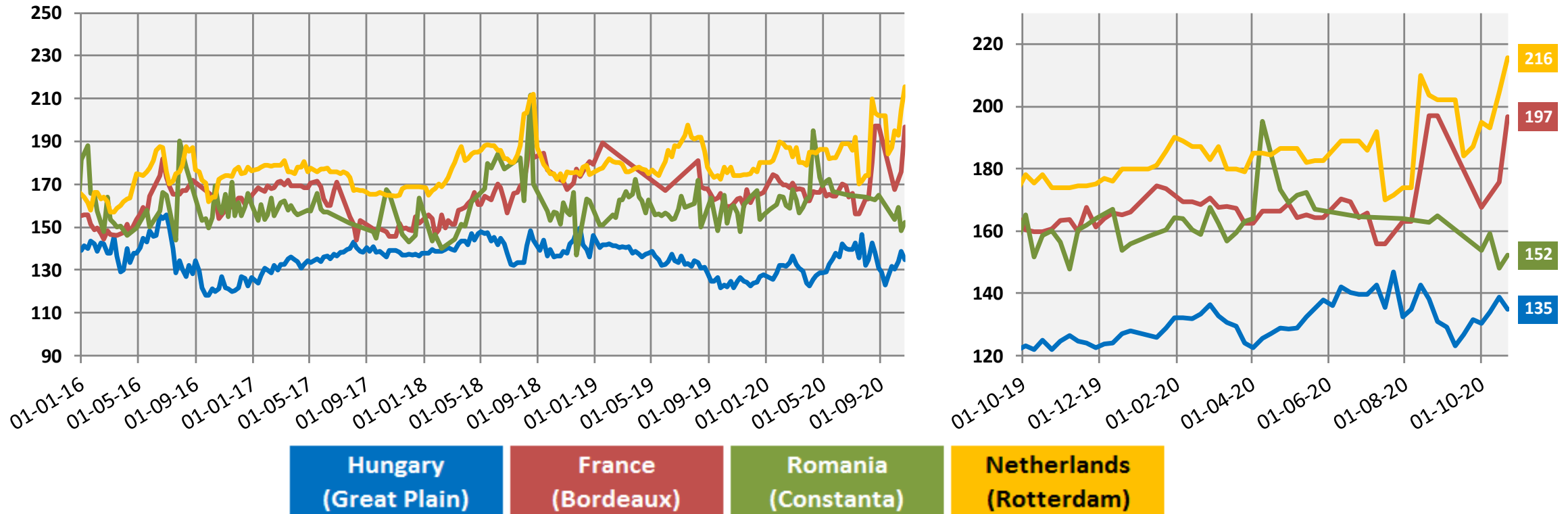
Source: Member States notification - Commission Implementing Regulation (EU) 2017/1185 Art.11, Annex I Point 1

# EU market prices for feed barley – (EUR per tonne)



Source: Member States notification - Commission Implementing Regulation (EU) 2017/1185 Art.11, Annex I Point 1

# EU market prices for maize – (EUR per tonne)

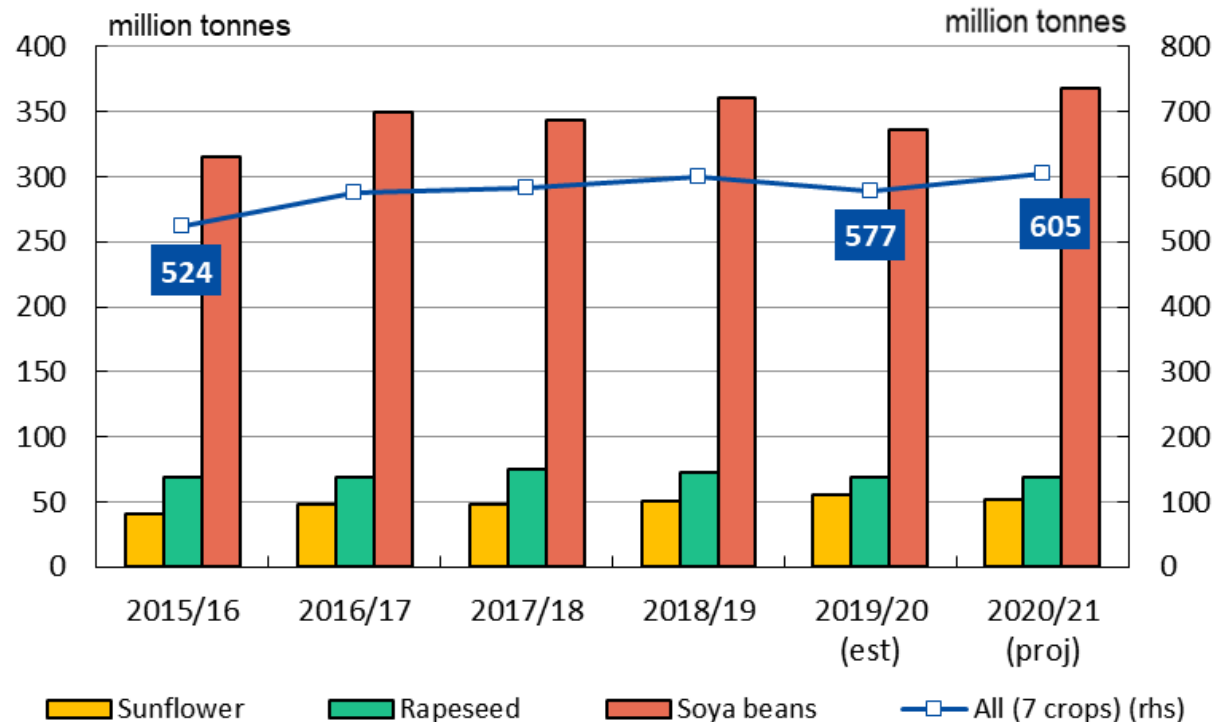


Source: Member States notification - Commission Implementing Regulation (EU) 2017/1185 Art.11, Annex I Point 1



# World and EU Oilseeds Forecasts and Prices

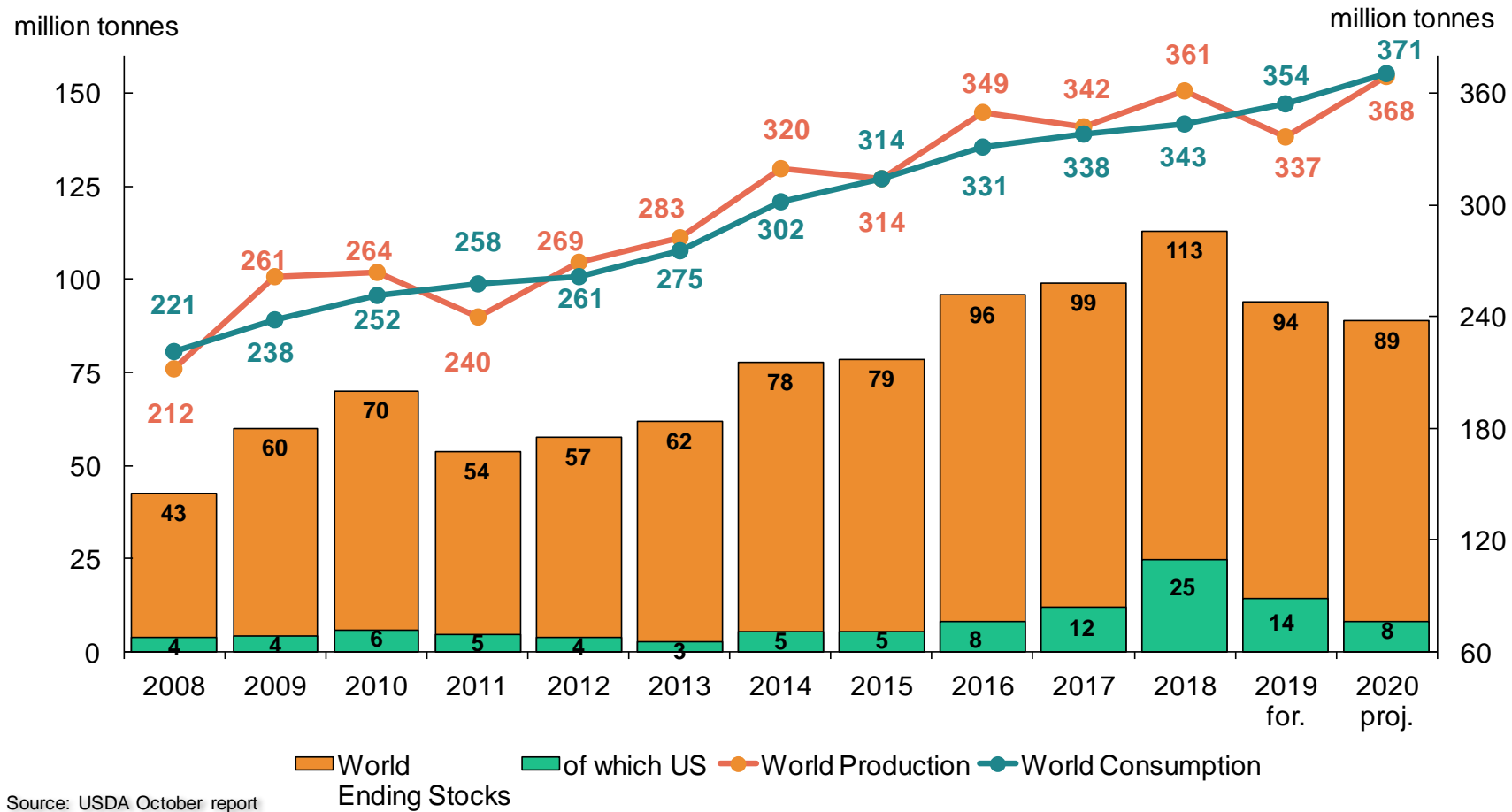
# 2020/21 World Oilseeds (USDA)



## 20/21 outlook (changes y/y):

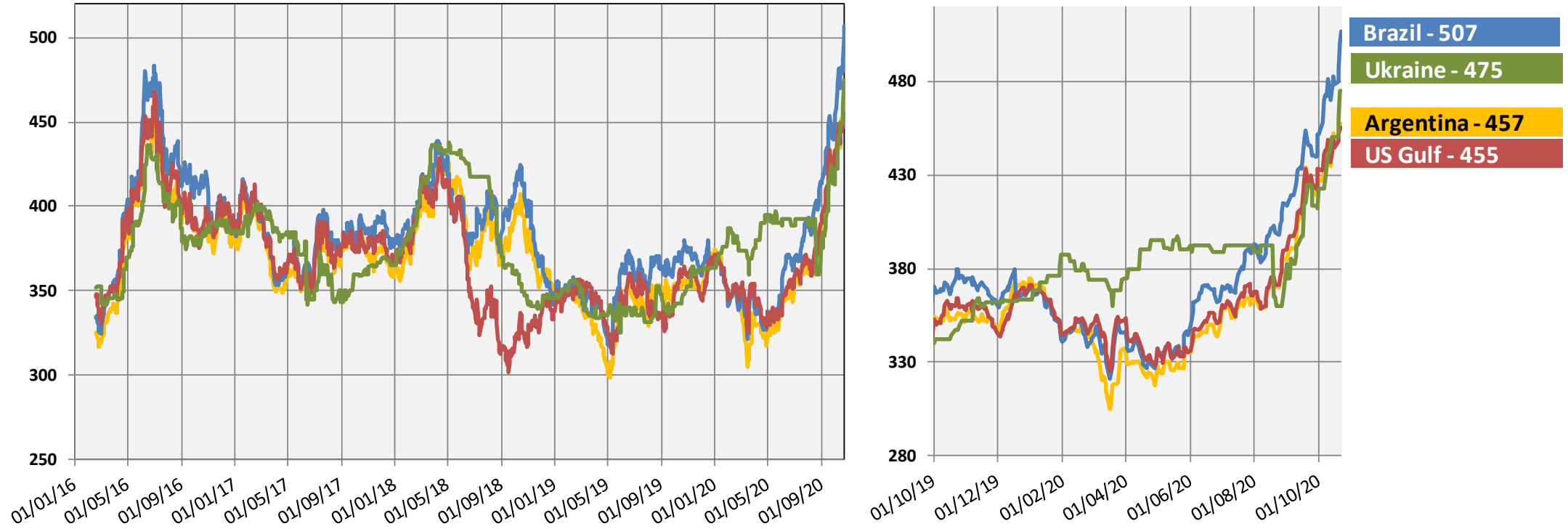
|                 |         |   |
|-----------------|---------|---|
| Total Oilseeds: | 605 m t | ↓ |
| • Soya beans:   | 368 m t | ↓ |
| • Rapeseed:     | 69 m t  | ↑ |
| • Sunflower:    | 51 m t  | ↓ |

# World soya: USDA



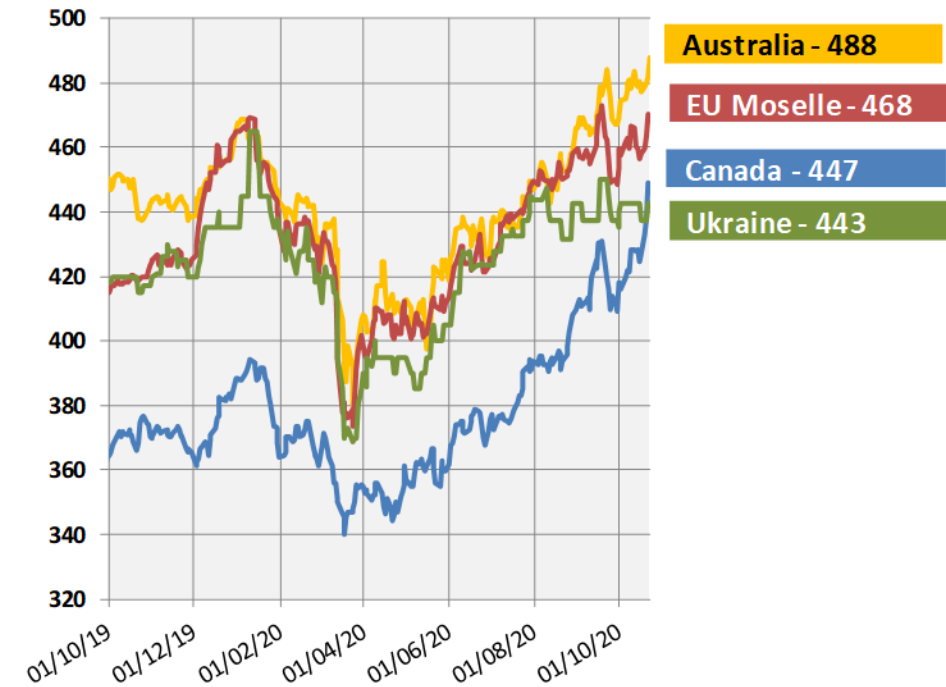
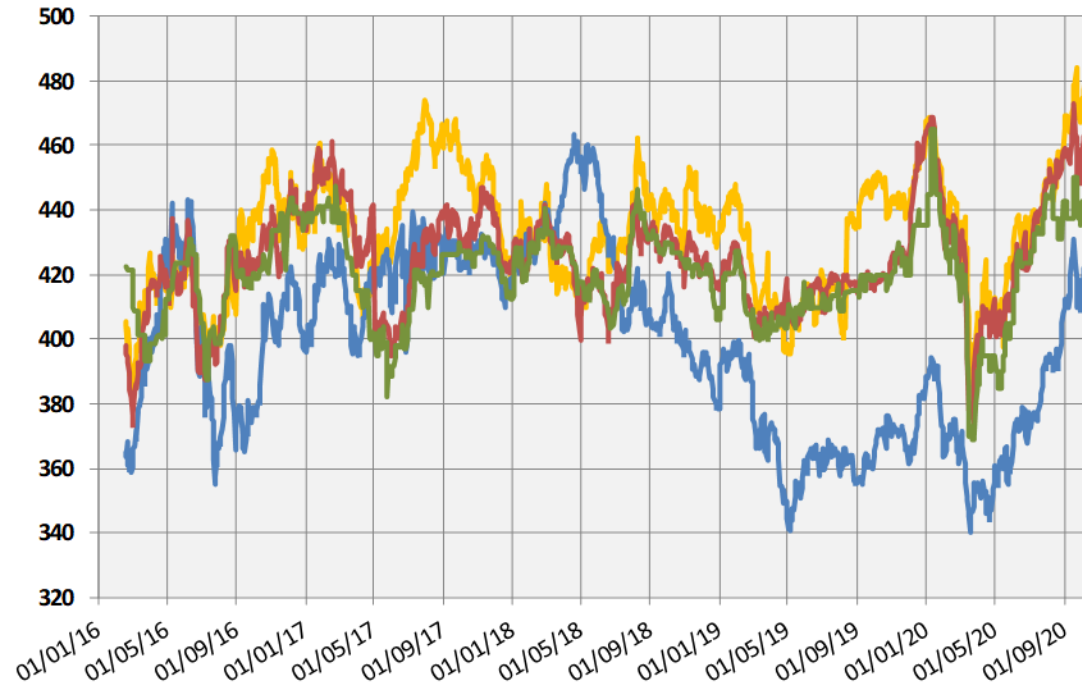
Source: USDA October report

# World export prices soya beans (USD/tonne)



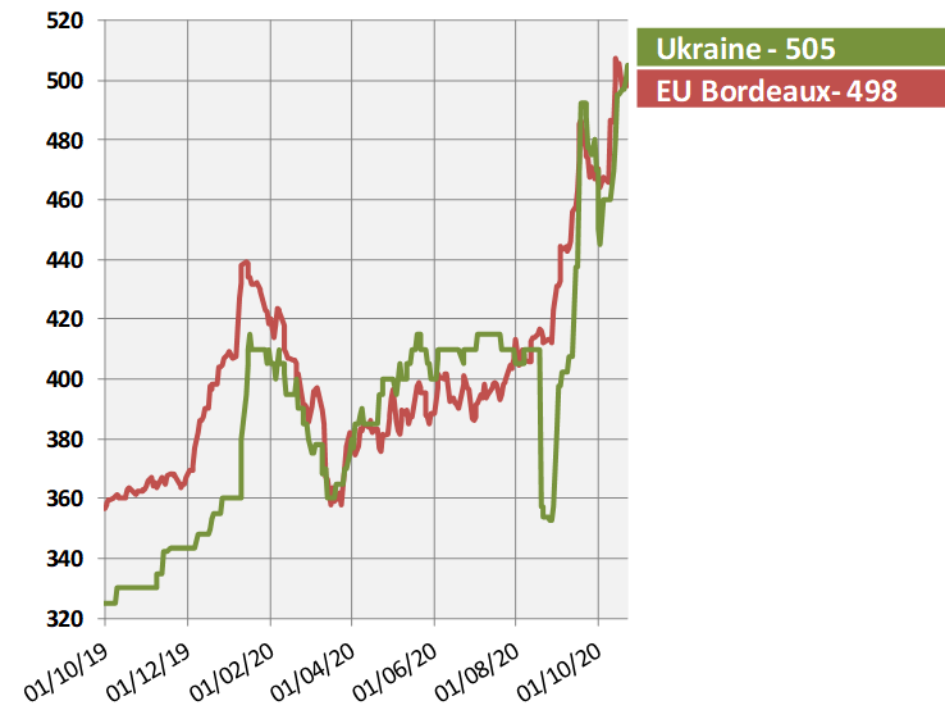
Source: International Grains Council

# World export prices for rapeseed – (USD/tonne)



Source: International Grains Council

# World export prices for sunflower – (USD/tonne)



Source: International Grains Council

# EU oilseeds 2020/21 forecast

## EU OILSEEDS AREA

(million hectares)

|              | 5-year trimmed average | 2019/20      | October      | 2020/21<br>vs. 2019/20 (%) | vs. 5-y AVG (%) |
|--------------|------------------------|--------------|--------------|----------------------------|-----------------|
| Rapeseed     | 6.06                   | 5.12         | 5.18         | 1.3                        | -14.5           |
| Sunflower    | 4.20                   | 4.34         | 4.44         | 2.4                        | 5.8             |
| Soya Beans   | 0.89                   | 0.91         | 0.94         | 3.6                        | 5.7             |
| <b>TOTAL</b> | <b>11.15</b>           | <b>10.37</b> | <b>10.57</b> | <b>2.0</b>                 | <b>-5.2</b>     |

## EU OILSEEDS PRODUCTION

(million tonnes)

|              | 5-year trimmed average | 2019/20      | October      | 2020/21<br>vs. 2019/20 (%) | vs. 5-y AVG (%) |
|--------------|------------------------|--------------|--------------|----------------------------|-----------------|
| Rapeseed     | 19.15                  | 15.32        | 15.90        | 3.8                        | -17.0           |
| Sunflower    | 9.33                   | 10.25        | 8.87         | -13.4                      | -4.9            |
| Soya Beans   | 2.50                   | 2.74         | 2.56         | -6.7                       | 2.5             |
| <b>TOTAL</b> | <b>30.65</b>           | <b>28.31</b> | <b>27.33</b> | <b>-3.5</b>                | <b>-11.8</b>    |

Sources : EC - DG AGRI.

# Oilseeds balance sheet (EU)

## OILSEEDS SUPPLY & DEMAND

(thousand metric tonnes)

|                                 | 2019/20 fc    |               |               |               | 2020/21 proj. |               |               |               |
|---------------------------------|---------------|---------------|---------------|---------------|---------------|---------------|---------------|---------------|
| <i>last updated: 29/10/2020</i> | Rapeseed      | Soya beans    | Sunflower     | TOTAL         | Rapeseed      | Soya beans    | Sunflower     | TOTAL         |
| <b>Beginning stocks</b>         | <b>1,372</b>  | <b>1,990</b>  | <b>900</b>    | <b>4,263</b>  | <b>500</b>    | <b>1,500</b>  | <b>1,200</b>  | <b>3,200</b>  |
| Usable production               | 15,321        | 2,743         | 10,247        | 28,311        | 15,904        | 2,558         | 8,870         | 27,332        |
| Area (thousand ha)              | 5,119         | 908           | 4,339         | 10,365        | 5,183         | 941           | 4,445         | 10,568        |
| Yield (tonnes/ha)               | 2.99          | 3.02          | 2.36          | 2.73          | 3.07          | 2.72          | 2.00          | 2.59          |
| Imports (from third countries)  | 6,235         | 14,729        | 971           | 21,935        | 5,000         | 15,700        | 1,000         | 21,700        |
| <b>Total supply</b>             | <b>22,929</b> | <b>19,462</b> | <b>12,118</b> | <b>54,509</b> | <b>21,404</b> | <b>19,758</b> | <b>11,070</b> | <b>52,232</b> |
| Domestic use                    | 22,098        | 17,721        | 10,356        | 50,175        | 20,404        | 18,627        | 9,427         | 48,458        |
| of which crushing               | (21,369)      | (15,572)      | (9,125)       | (46,066)      | (19,696)      | (16,441)      | (8,331)       | (44,467)      |
| Exports (to third countries)    | 330           | 241           | 562           | 1,133         | 200           | 231           | 543           | 974           |
| <b>Total use</b>                | <b>22,429</b> | <b>17,962</b> | <b>10,918</b> | <b>51,309</b> | <b>20,604</b> | <b>18,858</b> | <b>9,970</b>  | <b>49,432</b> |
| <b>Ending stocks</b>            | <b>500</b>    | <b>1,500</b>  | <b>1,200</b>  | <b>3,200</b>  | <b>800</b>    | <b>900</b>    | <b>1,100</b>  | <b>2,800</b>  |
| <b>Change in stocks</b>         | <b>-872</b>   | <b>-490</b>   | <b>300</b>    | <b>-1,063</b> | <b>300</b>    | <b>-600</b>   | <b>-100</b>   | <b>-400</b>   |



# EU Protein Crops and Feed Protein Balance Sheet

# EU protein crops 2020/21 forecast

## EU PROTEIN CROPS AREA

(million hectares)

|              | 5-year trimmed average | 2019/20     | 2020/21     |                 |                 |
|--------------|------------------------|-------------|-------------|-----------------|-----------------|
|              |                        |             | October     | vs. 2019/20 (%) | vs. 5-y AVG (%) |
| Field peas   | 0.80                   | 0.79        | 0.84        | 6.9             | 5.3             |
| Broad beans  | 0.47                   | 0.42        | 0.45        | 7.4             | -3.3            |
| Sweet lupins | 0.17                   | 0.17        | 0.18        | 6.4             | 7.6             |
| <b>TOTAL</b> | <b>1.46</b>            | <b>1.37</b> | <b>1.47</b> | <b>7.0</b>      | <b>0.6</b>      |

## EU PROTEIN CROPS PRODUCTION

(million tonnes)

|              | 5-year trimmed average | 2019/20     | 2020/21     |                 |                 |
|--------------|------------------------|-------------|-------------|-----------------|-----------------|
|              |                        |             | October     | vs. 2019/20 (%) | vs. 5-y AVG (%) |
| Field peas   | 1.97                   | 2.01        | 2.14        | 6.4             | 8.5             |
| Broad beans  | 1.16                   | 1.04        | 1.22        | 17.3            | 4.7             |
| Sweet lupins | 0.26                   | 0.21        | 0.24        | 11.2            | -7.1            |
| <b>TOTAL</b> | <b>3.43</b>            | <b>3.27</b> | <b>3.60</b> | <b>10.1</b>     | <b>5.0</b>      |

Sources : EC - DG AGRI.

# EU+UK Feed Protein Balance Sheet 2019/20

September 2020

## EU + UK Feed Protein Balance Sheet

| 2019/20                  | Million tonnes                |                      |                      |                                 |                             |                              | Protein content<br>(feed use)<br>(G) | Million tonnes<br>(crude protein)          |  |   |                        |
|--------------------------|-------------------------------|----------------------|----------------------|---------------------------------|-----------------------------|------------------------------|--------------------------------------|--|--|---|------------------------|
| Protein source           | Total EU<br>production<br>(A) | EU<br>imports<br>(B) | EU<br>exports<br>(C) | Total EU<br>domestic use<br>(D) | EU total<br>feed use<br>(E) | Feed use<br>EU origin<br>(F) |                                      | EU total<br>feed use<br>(H) = (E) *<br>(G) | Feed use<br>EU origin<br>(I) = (F) * (G) | % feed use<br>of EU origin<br>(I) / (H) | % of total<br>feed use |
| <b>CROPS</b>             |                               |                      |                      |                                 | 181.7                       | 162.0                        |                                      | 18.32                                      | 16.59                                    | 91%                                     | 22%                    |
| <b>CO-PRODUCTS</b>       |                               |                      |                      |                                 | 84.6                        | 45.4                         |                                      | 25.32                                      | 9.49                                     | 37%                                     | 31%                    |
| OILSEED MEALS            | 30.1                          | 23.0                 | 1.4                  | 51.7                            | 51.5                        | 14.3                         |                                      | 20.53                                      | 4.96                                     | 24%                                     | 25%                    |
| OTHERS CO-PRODUCTS       | 34.1                          | 3.8                  | 1.3                  | 36.6                            | 33.1                        | 31.1                         |                                      | 4.80                                       | 4.52                                     | 94%                                     | 6%                     |
| <b>NON-PLANT SOURCES</b> |                               |                      |                      |                                 | 8.2                         | 8.0                          |                                      | 2.15                                       | 2.02                                     | 94%                                     | 3%                     |
| <b>ROUGHAGE</b>          |                               |                      |                      |                                 | 1302                        | 1302                         |                                      | 37   | 37                                       | 100%                                    | 45%                    |
| <b>TOTAL</b>             |                               |                      |                      |                                 |                             |                              |                                      | 83   | 65                                       | 79%                                     |                        |

### Legend

|  |       |       |     |
|--|-------|-------|-----|
| Low-Pro: Less than 15% protein content | 55.36 | 53.64 | 97% |
| Medium-Pro: 15-30% protein content     | 4.41  | 3.89  | 88% |
| High-Pro: 30-50% protein content       | 20.65 | 5.51  | 27% |
| Super-Pro: Over 50% protein content    | 2.24  | 1.92  | 86% |

There is only limited inter-changeability between proteins from different categories, for instance between proteins from cereals and proteins from soya meal (due to its amino acid pattern, soya protein is used more efficiently than other plant proteins in animal nutrition).

# EU Feed Protein Balance Sheet 2020/21

October 2020

## EU Feed Protein Balance Sheet (forecast)

| 2020/21                  | Million tonnes          |                |                |                           |                       |                        | Protein content (feed use) (G) | Million tonnes (crude protein)    |                                    |                                   |                     |
|--------------------------|-------------------------|----------------|----------------|---------------------------|-----------------------|------------------------|--------------------------------|-----------------------------------|------------------------------------|-----------------------------------|---------------------|
| Protein source           | Total EU production (A) | EU imports (B) | EU exports (C) | Total EU domestic use (D) | EU total feed use (E) | Feed use EU origin (F) | (G)                            | EU total feed use (H) = (E) * (G) | Feed use EU origin (I) = (F) * (G) | % feed use of EU origin (I) / (H) | % of total feed use |
| <b>CROPS</b>             |                         |                |                |                           | 166.5                 | 142.8                  |                                | 16.70                             | 14.65                              | 88%                               | 23%                 |
| <b>CO-PRODUCTS</b>       |                         |                |                |                           | 77.9                  | 40.5                   |                                | 23.65                             | 8.50                               | 36%                               | 32%                 |
| OILSEED MEALS            | 28.4                    | 21.6           | 2.0            | 48.0                      | 47.8                  | 12.6                   |                                | 19.19                             | 4.37                               | 23%                               | 26%                 |
| OTHERS CO-PRODUCTS       | 30.9                    | 4.1            | 1.6            | 33.3                      | 30.1                  | 27.9                   |                                | 4.46                              | 4.14                               | 93%                               | 6%                  |
| <b>NON-PLANT SOURCES</b> |                         |                |                |                           | 8.0                   | 7.8                    |                                | 2.05                              | 1.91                               | 93%                               | 3%                  |
| <b>ROUGHAGE</b>          |                         |                |                |                           | 1062                  | 1062                   |                                | 31                                | 31                                 | 100%                              | 42%                 |
| <b>TOTAL</b>             |                         |                |                |                           |                       |                        |                                | 73                                | 56                                 | 76%                               |                     |

### Legend

Low-Pro: Less than 15% protein content

Medium-Pro: 15-30% protein content

High-Pro: 30-50% protein content

Super-Pro: Over 50% protein content

There is only limited inter-changeability between proteins from different categories, for instance between proteins from cereals and proteins from soya meal (due to its amino acid pattern, soya protein is used more efficiently than other plant proteins in animal nutrition).

|       |       |     |
|-------|-------|-----|
| 47.82 | 45.71 | 96% |
| 3.97  | 3.49  | 88% |
| 19.33 | 4.91  | 25% |
| 2.12  | 1.80  | 85% |



European  
Commission

# Thank you

Market data the for cereals, oilseeds and protein crops are available at the EU Crops Market Observatory

<https://ec.europa.eu/agriculture/market-observatory/crops>



© European Union 2020

Unless otherwise noted the reuse of this presentation is authorised under the [CC BY 4.0](https://creativecommons.org/licenses/by/4.0/) license. For any use or reproduction of elements that are not owned by the EU, permission may need to be sought directly from the respective right holders.



# Keep in touch



[ec.europa.eu/](https://ec.europa.eu/)



[europa.eu/](https://europa.eu/)



[@EU\\_Commission](https://twitter.com/EU_Commission)



[@EuropeanCommission](https://www.facebook.com/EuropeanCommission)



[European Commission](https://www.linkedin.com/company/european-commission)



[europeancommission](https://www.instagram.com/europeancommission)



[@EuropeanCommission](https://www.youtube.com/@EuropeanCommission)



[EUTube](https://www.youtube.com/EUTube)



[EU Spotify](https://open.spotify.com/playlist/37i9ZQAEWUwZu33333333)