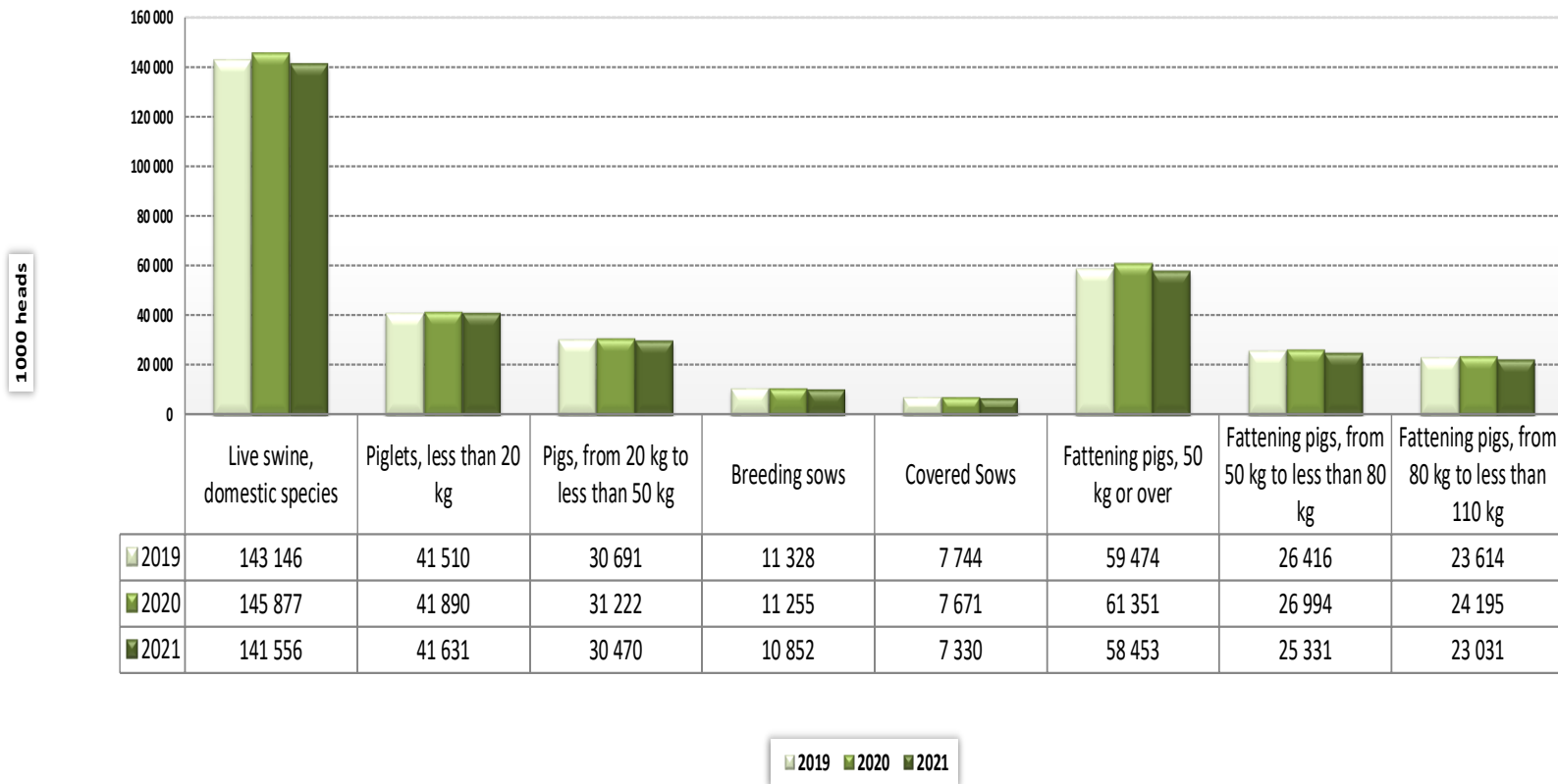




Working Group on Pigmeat
28 March 2022

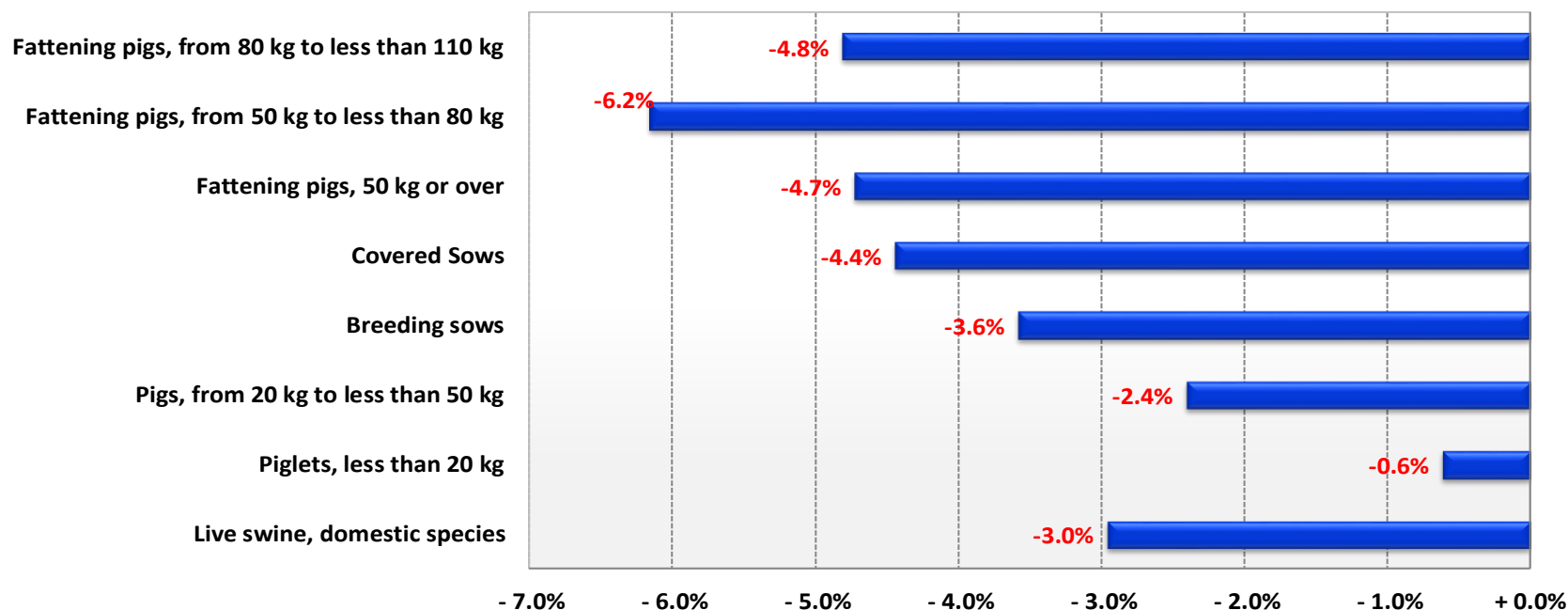
DECEMBER SURVEY (1000 Heads)

Pig population - Livestock survey December 2021



Source: Eurostat

Change in pig population - Livestock survey December 2021 compared to December 2020



Source: Eurostat



Pig population/Livestock survey - annual data (In 1 000 heads)

Source : Eurostat annual data (apro_mt_lspig)

	Live swine, domestic species				Piglets, less than 20 kg				Breeding pigs				Breeding sows				Covered sows			
				% Var 2021 2020				% Var 2021 2020				% Var 2021 2020				% Var 2021 2020				% Var 2021 2020
	2019	2020	2021		2019	2020	2021		2019	2020	2021		2019	2020	2021		2019	2020	2021	
BE	6 085	6 218	6 042	- 2.8%	1 585	1 650	1 623	- 1.6%	399	399	389	- 2.4%	396	395	386	- 2.3%	328	326	314	- 3.4%
BG	492	592	695	+ 17.3%	92	131	155	+ 18.4%	52	67	68	+ 1.3%	51	66	66	- 0.0%	27	36	39	+ 9.2%
CZ	1 509	1 546	1 493	- 3.4%	483	482	468	- 2.8%	132	136	128	- 5.8%	131	134	126	- 5.8%	84	87	80	- 8.5%
DK	12 728	13 391	13 152	- 1.8%	4 563	4 674	4 608	- 1.4%	1 254	1 286	1 245	- 3.2%	1 244	1 273	1 235	- 3.0%	785	787	777	- 1.3%
DE	26 053	26 070	23 620	- 9.4%	7 674	7 709	6 917	- 10.3%	1 806	1 714	1 591	- 7.2%	1 788	1 695	1 571	- 7.3%	1 292	1 224	1 120	- 8.5%
EE	302	317	308	- 2.7%	111	103	104	+ 0.7%	26	28	26	- 5.5%	26	27	26	- 5.9%	20	18	21	+ 16.5%
EL	733	743	650	- 12.5%	196	203	199	- 2.0%	99	97	75	- 22.7%	94	93	70	- 24.7%	51	51	45	- 11.8%
ES	31 246	32 796	34 454	+ 5.1%	8 341	8 484	9 639	+ 13.6%	2 604	2 666	2 712	+ 1.7%	2 577	2 635	2 685	+ 1.9%	1 732	1 740	1 759	+ 1.1%
FR	13 510	13 393	12 941	- 3.4%	4 982	4 933	4 731	- 4.1%	992	979	941	- 3.9%	984	965	928	- 3.8%	694	692	647	- 6.5%
HR	1 022	1 033	963	- 6.8%	265	273	271	- 0.7%	128	113	108	- 4.4%	125	110	105	- 4.5%	44	47	39	- 17.0%
IE	1 613	1 679	1 714	+ 2.1%	452	427	483	+ 13.0%	145	148	146	- 1.3%	144	147	145	- 1.4%	99	103	101	- 2.0%
IT	8 510	8 543	8 408	- 1.6%	1 412	1 424	1 384	- 2.8%	579	591	573	- 3.0%	556	569	551	- 3.1%	463	474	464	- 2.1%
CY	352	359	361	+ 0.4%	125	129	128	- 0.7%	33	33	31	- 3.6%	33	32	31	- 4.3%	28	27	26	- 3.1%
LV	314	307	325	+ 6.0%	59	56	59	+ 6.7%	35	35	40	+ 13.8%	34	35	40	+ 14.0%	15	16	15	- 6.8%
LT	551	580	574	- 1.1%	104	112	116	+ 3.9%	43	46	45	- 2.2%	43	45	44	- 2.2%	35	37	36	- 2.7%
LU	84	82	78	- 4.6%	17	17	12	- 28.0%	5	4	3	- 26.7%	5	4	3	- 26.8%	4	3	2	- 27.5%
HU	2 634	2 850	2 726	- 4.4%	656	717	703	- 1.9%	234	246	243	- 1.2%	231	243	241	- 0.9%	148	166	156	- 6.1%
MT	35	40	40	- 0.1%	7	10	10	- 1.2%	4	5	4	- 18.6%	4	4	4	- 17.2%	3	4	3	- 16.1%
NL	11 921	11 541	10 872	- 5.8%	5 002	4 872	4 773	- 2.0%	1 052	928	918	- 1.1%	1 047	923	910	- 1.4%	661	580	567	- 2.2%
AT	2 773	2 806	2 786	- 0.7%	651	664	655	- 1.4%	234	231	228	- 1.1%	230	227	224	- 1.2%	162	162	158	- 2.6%
PL	11 216	11 727	10 242	- 12.7%	2 288	2 377	2 145	- 9.7%	771	830	665	- 19.8%	757	815	654	- 19.7%	520	547	434	- 20.6%
PT	2 256	2 252	2 221	- 1.4%	807	821	817	- 0.4%	242	237	234	- 1.2%	237	232	230	- 1.1%	164	159	157	- 0.9%
RO	3 834	3 750	3 765	+ 0.4%	736	707	703	- 0.6%	316	316	322	+ 1.6%	309	308	313	+ 1.7%	199	193	197	+ 2.1%
SI	240	229	216	- 6.0%	51	50	42	- 17.0%	17	16	15	- 10.2%	17	16	14	- 9.4%	9	9	8	- 13.9%
SK	589	538	448	- 16.8%	202	203	176	- 13.3%	55	51	37	- 26.9%	54	50	37	- 26.5%	31	33	17	- 49.3%
FI	1 062	1 104	1 091	- 1.2%	272	300	338	+ 12.8%	94	90	94	+ 4.5%	92	89	93	+ 4.6%	66	66	68	+ 3.5%
SE	1 481	1 389	1 373	- 1.2%	378	362	371	+ 2.3%	122	124	122	- 1.1%	121	122	121	- 1.1%	82	85	80	- 6.1%
EU	143 146	145 877	141 556	- 3.0%	41 510	41 890	41 631	- 0.6%	11 473	11 415	11 004	- 3.6%	11 328	11 255	10 852	- 3.6%	7 744	7 671	7 330	- 4.4%

DECEMBER SURVEY (1000 Heads)



Pig population/Livestock survey - annual data (In 1 000 heads)

	Sows covered for the first time				% Var 2021 2020	Sows, not covered				% Var 2021 2020	Gilts not yet covered				% Var 2021 2020	Pigs, from 20 kg to less than 50 kg				% Var 2021 2020	Fattening pigs, 50 kg or over				% Var 2021 2020
	2019	2020	2021			2019	2020	2021			2019	2020	2021			2019	2020	2021			2019	2020	2021		
BE	60	60	54	- 10.6%		68	70	72	+ 3.1%		35	37	36	- 1.5%		1 240	1 086	1 213	+ 11.8%		2 861	3 084	2 816	- 8.7%	
BG	4	12	6	- 49.3%		24	30	26	- 11.3%		9	7	5	- 24.7%		134	129	197	+ 53.4%		215	266	274	+ 3.3%	
CZ	18	20	18	- 8.4%		47	47	47	- 0.6%		22	22	21	- 2.1%		331	362	329	- 8.9%		562	567	568	+ 0.2%	
DK	193	195	192	- 1.5%		459	486	458	- 5.8%		216	239	215	- 10.0%		3 908	4 087	4 032	- 1.3%		3 003	3 344	3 267	- 2.3%	
DE	210	196	181	- 7.4%		496	471	451	- 4.4%		210	197	196	- 0.7%		4 852	4 701	4 228	- 10.1%		11 721	11 946	10 883	- 8.9%	
EE	3	3	3	+ 0.0%		6	9	5	- 50.5%		3	5	4	- 20.0%		59	56	59	+ 5.8%		105	130	119	- 8.3%	
EL	15	15	12	- 20.0%		43	42	24	- 42.9%		10	10	7	- 30.0%		173	176	135	- 23.3%		265	267	241	- 9.7%	
ES	274	267	276	+ 3.5%		845	895	926	+ 3.5%		308	318	358	+ 12.7%		7 020	7 534	8 016	+ 6.4%		13 281	14 111	14 087	- 0.2%	
FR	121	106	114	+ 7.5%		290	273	281	+ 2.9%		108	86	110	+ 27.9%		2 075	2 138	1 961	- 8.3%		5 461	5 343	5 309	- 0.6%	
HR	11	9	8	- 11.1%		81	63	66	+ 4.8%		15	13	15	+ 15.4%		178	191	158	- 17.3%		451	456	426	- 6.6%	
IE	20	21	21	- 0.6%		45	44	44	- 0.1%		16	17	17	- 0.2%		418	436	423	- 3.2%		599	667	663	- 0.7%	
IT	94	94	81	- 14.1%		93	95	87	- 7.9%		42	47	42	- 9.2%		1 622	1 620	1 611	- 0.5%		4 898	4 908	4 839	- 1.4%	
CY	5	5	4	- 18.1%		5	5	5	- 10.3%		4	4	3	- 15.5%		71	71	73	+ 2.9%		125	126	128	+ 1.4%	
LV	4	5	4	- 8.0%		20	18	24	+ 32.3%		11	11	16	+ 43.3%		88	92	97	+ 5.6%		133	124	129	+ 3.7%	
LT	7	7	6	- 13.9%		8	9	9	+ 0.0%		5	6	6	- 1.7%		153	158	152	- 3.7%		251	265	261	- 1.6%	
LU	1	0	0	- 37.8%		1	1	1	- 24.8%		0	0	0	- 50.0%		24	24	21	- 12.3%		38	37	42	+ 13.2%	
HU	32	37	36	- 4.1%		84	78	85	+ 8.7%		44	35	37	+ 4.3%		563	565	585	+ 3.5%		1 182	1 322	1 195	- 9.6%	
MT	0	1	0	- 33.3%		0	1	0	- 23.8%		0	1	0	- 23.8%		11	10	10	+ 0.2%		14	15	16	+ 6.1%	
NL	117	111	107	- 3.6%		386	343	343	+ 0.0%		160	152	145	- 4.6%		1 704	1 696	1 549	- 8.7%		4 163	4 045	3 632	- 10.2%	
AT	24	24	23	- 5.0%		68	65	66	+ 2.4%		23	22	22	+ 1.0%		722	740	728	- 1.6%		1 166	1 172	1 175	+ 0.2%	
PL	93	90	70	- 21.6%		237	268	220	- 18.0%		45	51	42	- 17.9%		3 339	3 444	3 041	- 11.7%		4 818	5 077	4 391	- 13.5%	
PT	29	32	31	- 4.1%		73	73	72	- 1.6%		24	26	25	- 2.3%		477	426	418	- 2.0%		730	768	752	- 2.1%	
RO	41	40	40	- 0.7%		110	116	117	+ 1.0%		35	37	37	- 1.9%		727	728	737	+ 1.3%		2 056	2 000	2 004	+ 0.2%	
SI	2	2	2	- 23.8%		7	6	6	- 2.7%		2	2	2	- 13.0%		49	44	40	- 8.5%		122	119	119	+ 0.2%	
SK	7	7	2	- 77.6%		23	17	20	+ 19.0%		9	9	7	- 20.4%		131	98	71	- 27.8%		202	186	164	- 12.1%	
FI	11	13	14	+ 3.8%		27	23	25	+ 7.8%		17	12	15	+ 25.9%		258	264	255	- 3.2%		439	451	403	- 10.5%	
SE	57	58	58	+ 0.2%		39	37	41	+ 10.3%		24	22	26	+ 15.9%		365	348	330	- 5.3%		616	555	550	- 1.0%	
EU	1 452	1 431	1 363	- 4.7%		3 586	3 585	3 520	- 1.8%		1 399	1 386	1 409	+ 1.6%		30 691	31 222	30 470	- 2.4%		59 474	61 351	58 453	- 4.7%	

DECEMBER SURVEY (1000 Heads)



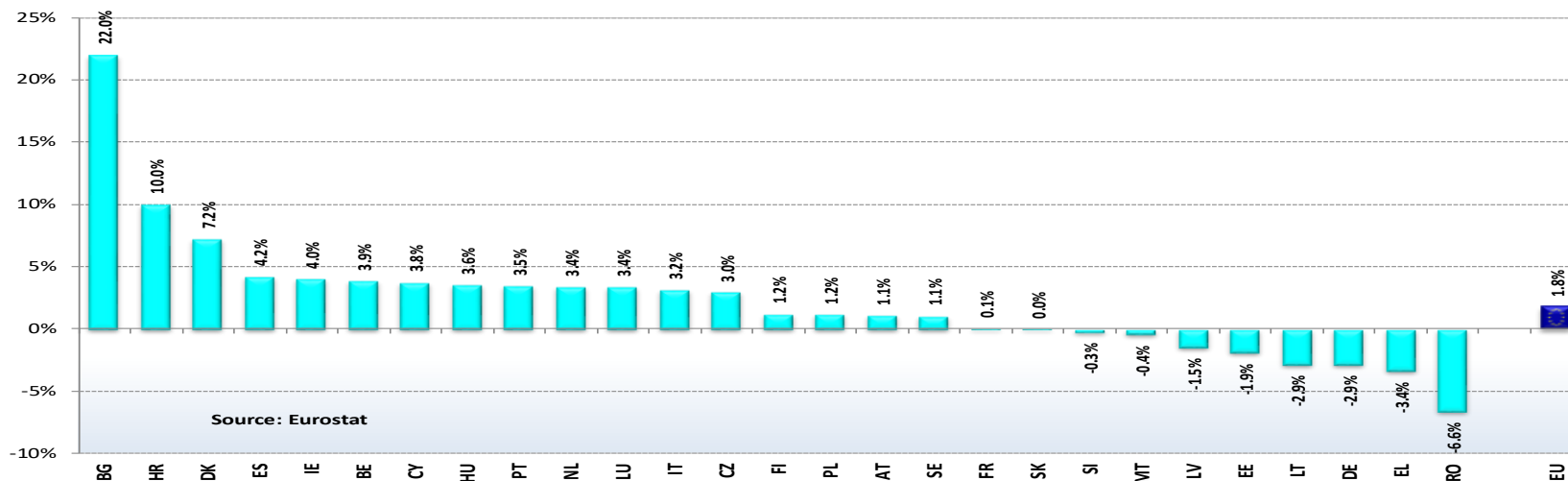
Pig population/Livestock survey - annual data (In 1 000 heads)

	Fattening pigs, from 50 kg to less than 80 kg				% Var 2021 2020	Fattening pigs, from 80 kg to less than 110 kg				% Var 2021 2020	Fattening pigs, 110 kg or over				% Var 2021 2020	Breeding boars				% Var 2021 2020
	2019	2020	2021			2019	2020	2021			2019	2020	2021			2019	2020	2021		
BE	1 366	1 438	1 298	- 9.7%		1 249	1 332	1 222	- 8.3%		246	315	296	- 5.8%		3	4	3	- 15.8%	
BG	98	145	170	+ 17.5%		114	112	99	- 11.3%		2	9	5	- 43.8%		1	1	2	+ 98.9%	
CZ	260	259	268	+ 3.5%		226	228	231	+ 1.2%		76	80	69	- 13.3%		2	2	2	- 6.5%	
DK	2 398	2 669	2 608	- 2.3%		599	667	652	- 2.2%		6	8	7	- 12.5%		10	13	10	- 23.1%	
DE	5 315	5 121	4 785	- 6.6%		5 118	5 156	4 739	- 8.1%		1 288	1 669	1 360	- 18.5%		19	20	21	+ 4.6%	
EE	53	58	55	- 4.5%		43	55	45	- 18.4%		9	17	19	+ 10.7%		0	0	0	- 33.3%	
EL	131	136	111	- 18.4%		103	102	96	- 5.9%		30	29	35	+ 20.7%		5	5	5	+ 0.0%	
ES	5 646	6 020	5 311	- 11.8%		5 642	6 071	6 172	+ 1.7%		1 993	2 021	2 604	+ 28.8%		27	31	28	- 11.8%	
FR	2 461	2 403	2 418	+ 0.6%		2 293	2 221	2 133	- 4.0%		707	719	758	+ 5.4%		8	13	12	- 7.7%	
HR	134	170	166	- 2.4%		148	133	119	- 10.5%		169	153	141	- 7.8%		3	3	3	+ 0.0%	
IE	310	341	339	- 0.7%		266	278	282	+ 1.6%		23	49	42	- 14.8%		1	1	1	+ 9.5%	
IT	1 275	1 277	1 329	+ 4.1%		1 433	1 436	1 383	- 3.7%		2 189	2 195	2 128	- 3.1%		23	22	22	- 0.8%	
CY	65	66	65	- 1.9%		59	58	60	+ 2.2%		1	2	3	+ 103.6%		0	0	0	+ 4.8%	
LV	75	69	71	+ 2.9%		55	52	54	+ 2.5%		3	2	4	+ 59.2%		0	0	0	- 2.3%	
LT	118	128	132	+ 2.5%		103	110	107	- 2.5%		30	27	23	- 17.2%		0	0	0	+ 0.0%	
LU	15	16	19	+ 19.4%		17	15	15	+ 2.3%		7	6	8	+ 22.9%		0	0	0	- 14.3%	
HU	459	473	467	- 1.3%		454	528	471	- 10.9%		269	322	258	- 20.0%		2	3	2	- 23.3%	
MT	8	10	10	- 0.3%		5	5	5	+ 17.4%		1	1	1	+ 16.9%		0	0	0	- 47.6%	
NL	1 755	1 731	1 587	- 8.3%		1 743	1 653	1 439	- 12.9%		666	661	606	- 8.3%		5	5	8	+ 60.0%	
AT	558	558	537	- 3.7%		470	463	484	+ 4.4%		138	150	153	+ 2.1%		4	4	4	+ 4.8%	
PL	2 333	2 334	2 069	- 11.3%		1 932	2 054	1 794	- 12.7%		553	689	528	- 23.3%		14	15	11	- 23.8%	
PT	387	382	405	+ 6.0%		307	324	294	- 9.0%		37	62	53	- 15.6%		5	5	5	- 2.4%	
RO	609	597	598	+ 0.2%		683	658	659	+ 0.1%		764	745	747	+ 0.3%		7	8	8	+ 1.3%	
SI	31	31	30	- 2.8%		38	33	34	+ 4.5%		53	55	55	- 0.7%		1	0	0		
SK	86	89	68	- 23.2%		90	68	65	- 4.1%		26	29	30	+ 3.5%		1	1	1	- 46.7%	
FI	217	241	184	- 23.4%		178	169	160	- 5.5%		43	41	59	+ 45.2%		1	1	1	- 9.1%	
SE	254	232	230	- 0.7%		246	214	218	+ 1.8%		116	109	101	- 7.1%		1	1	1	+ 7.7%	
EU	26 416	26 994	25 331	- 6.2%		23 614	24 195	23 031	- 4.8%		9 444	10 163	10 091	- 0.7%		144	159	151	- 5.3%	

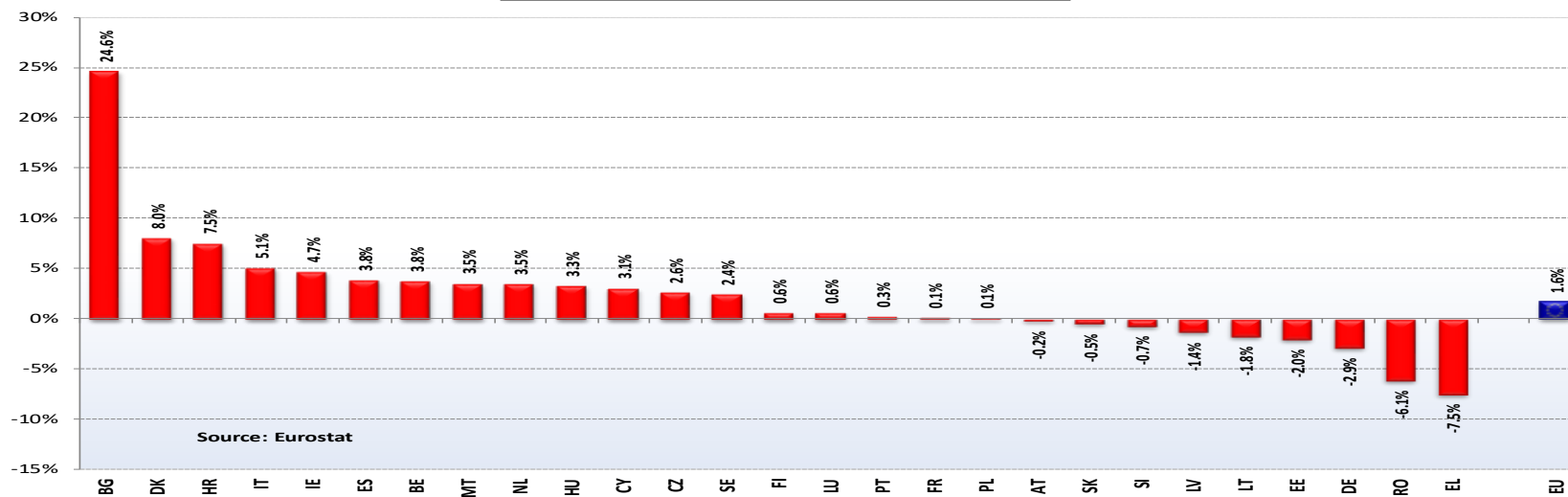
PRODUCTION

% EVOLUTION IN HEADS & TONNES

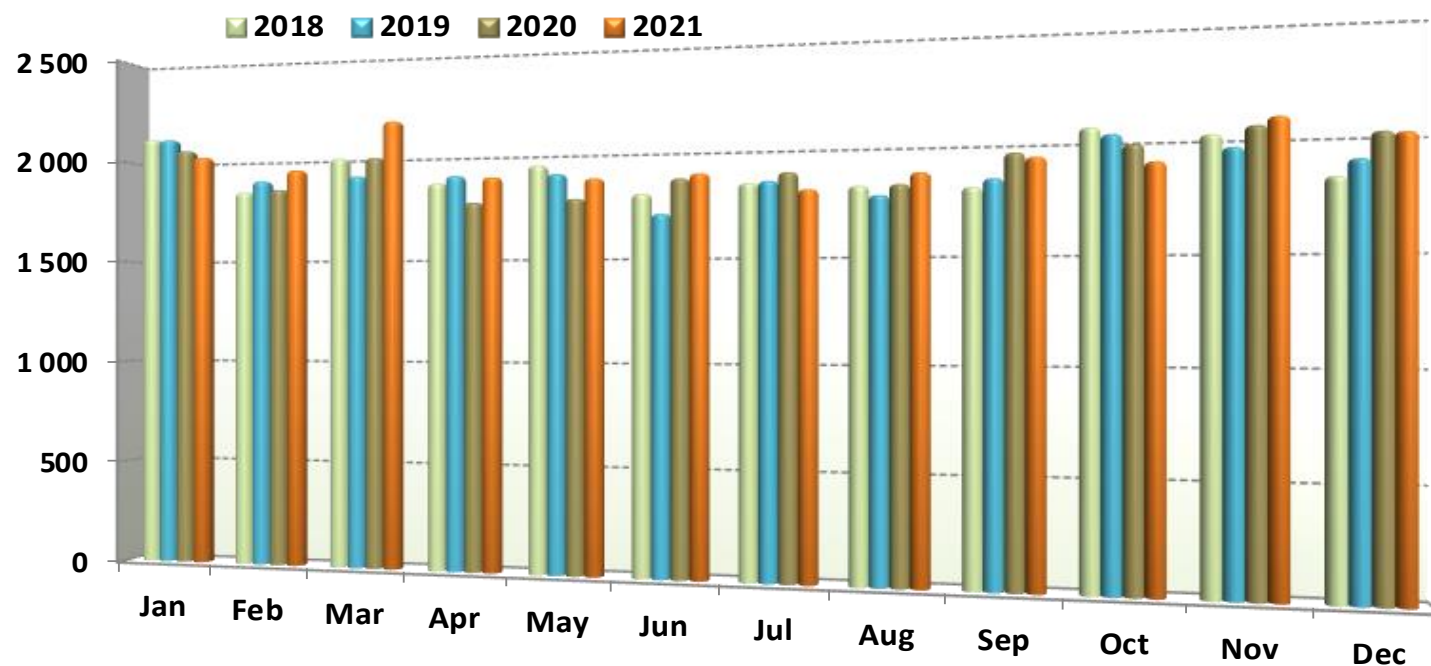
**Change in Pig Slaughter ('000 Heads)
2021/2020 (up to December)**



**Change in Pig Slaughter ('000 tonnes)
2021/2020 (up to December)**



Pig Production (EU Slaughtering) - Tonnes



Source: Eurostat

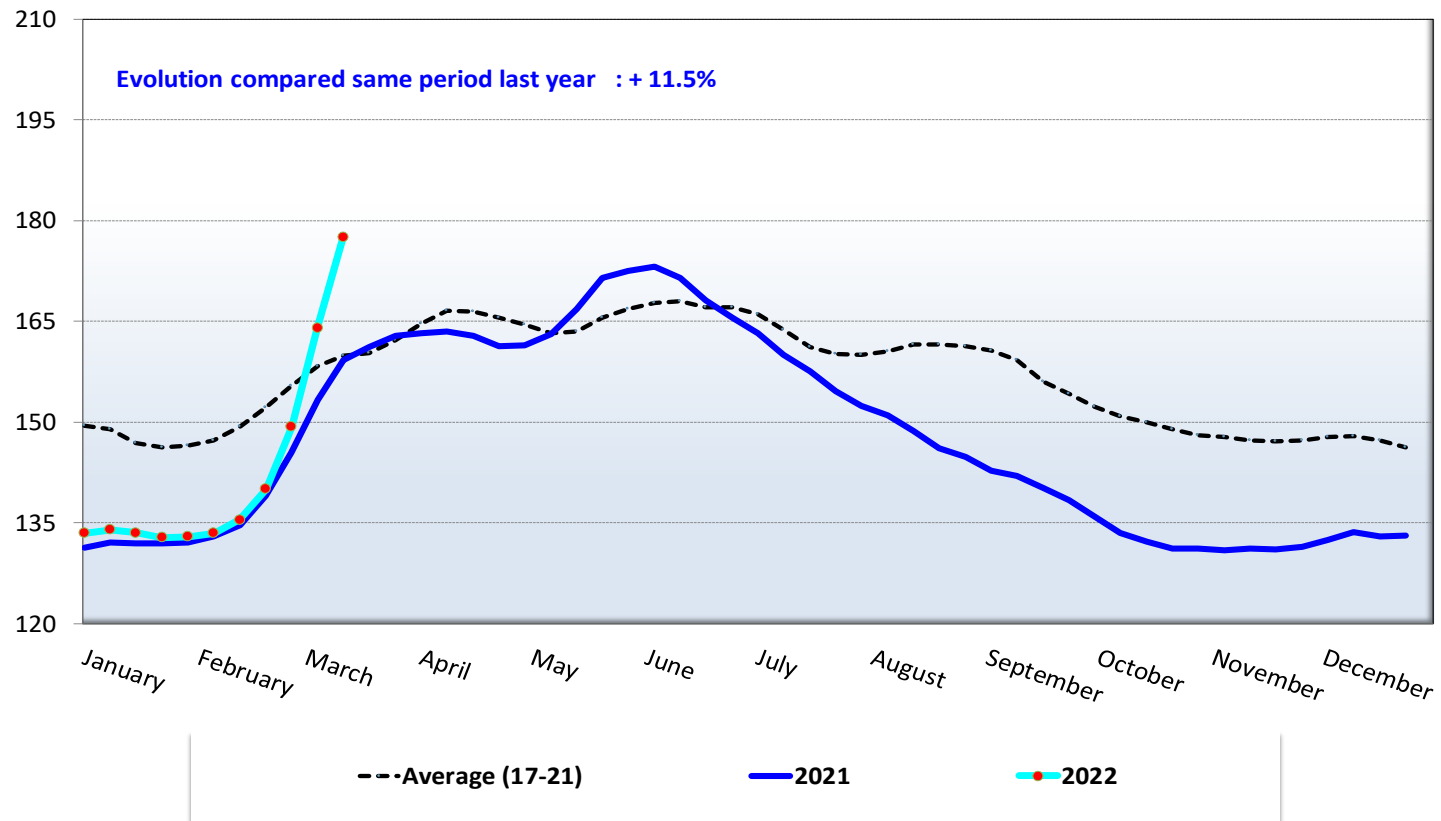
EU Prices	Week 11		Evolution since last week	Evolution since last month	Evolution since last year
Average (S-E)	177.5	€/100 kg carcass weight	+ 8.2%	+ 31.0%	+ 11.5%
Class S	178.4		+ 7.9%	+ 29.8%	+ 10.7%
Class E	175.7		+ 9.0%	+ 33.6%	+ 13.1%
Piglet	53.5	€/head	+ 15.2%	+ 46.5%	+ 5.9%

PRICES CARCASSES

EU EVOLUTION AVERAGE CLASSES S & E

Evolution of the EU pig **carcass prices** (average class E & S)

Week 11 latest price ==> 177.51 EUR/100 kg/cw

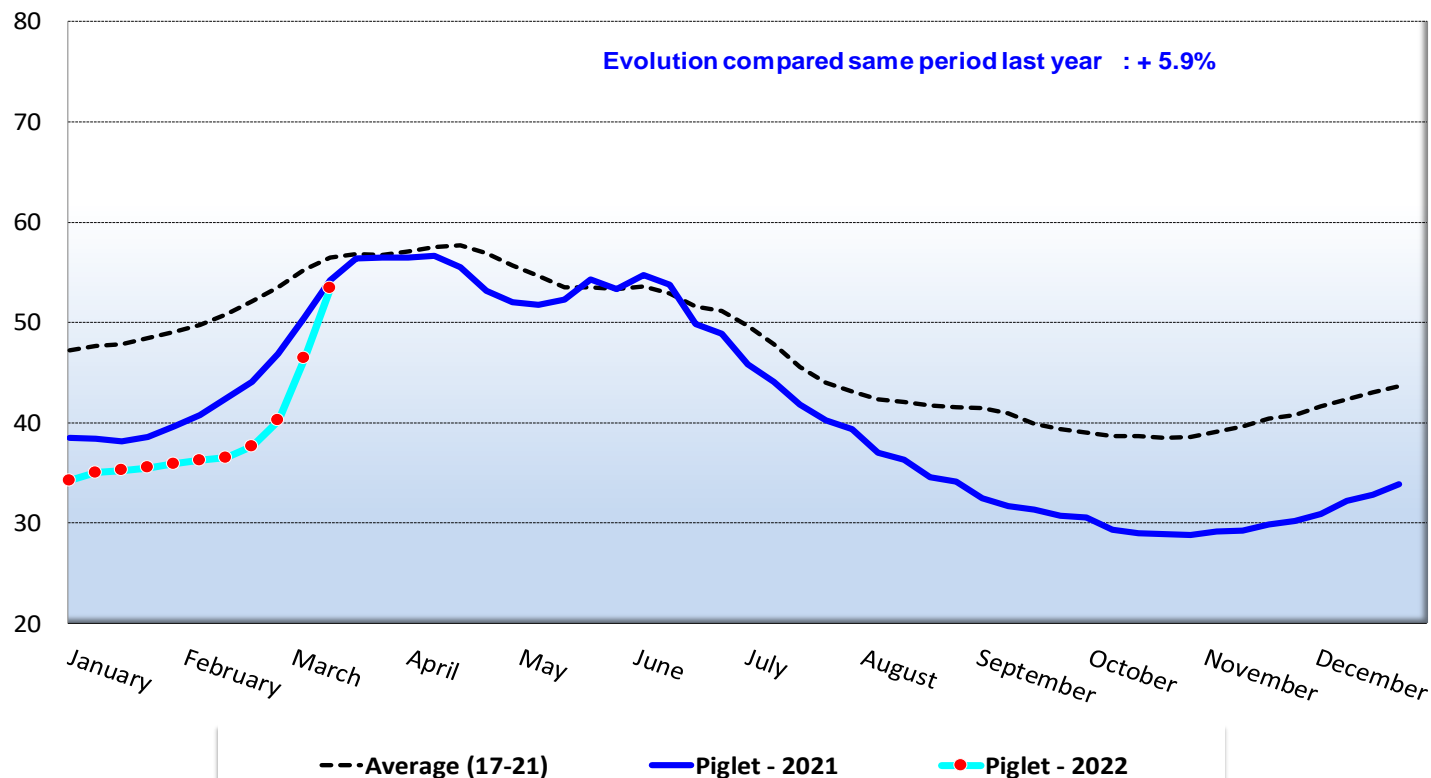


PRICES PIGLET

EU EVOLUTION

Evolution of the EU average piglet prices
(€/head)

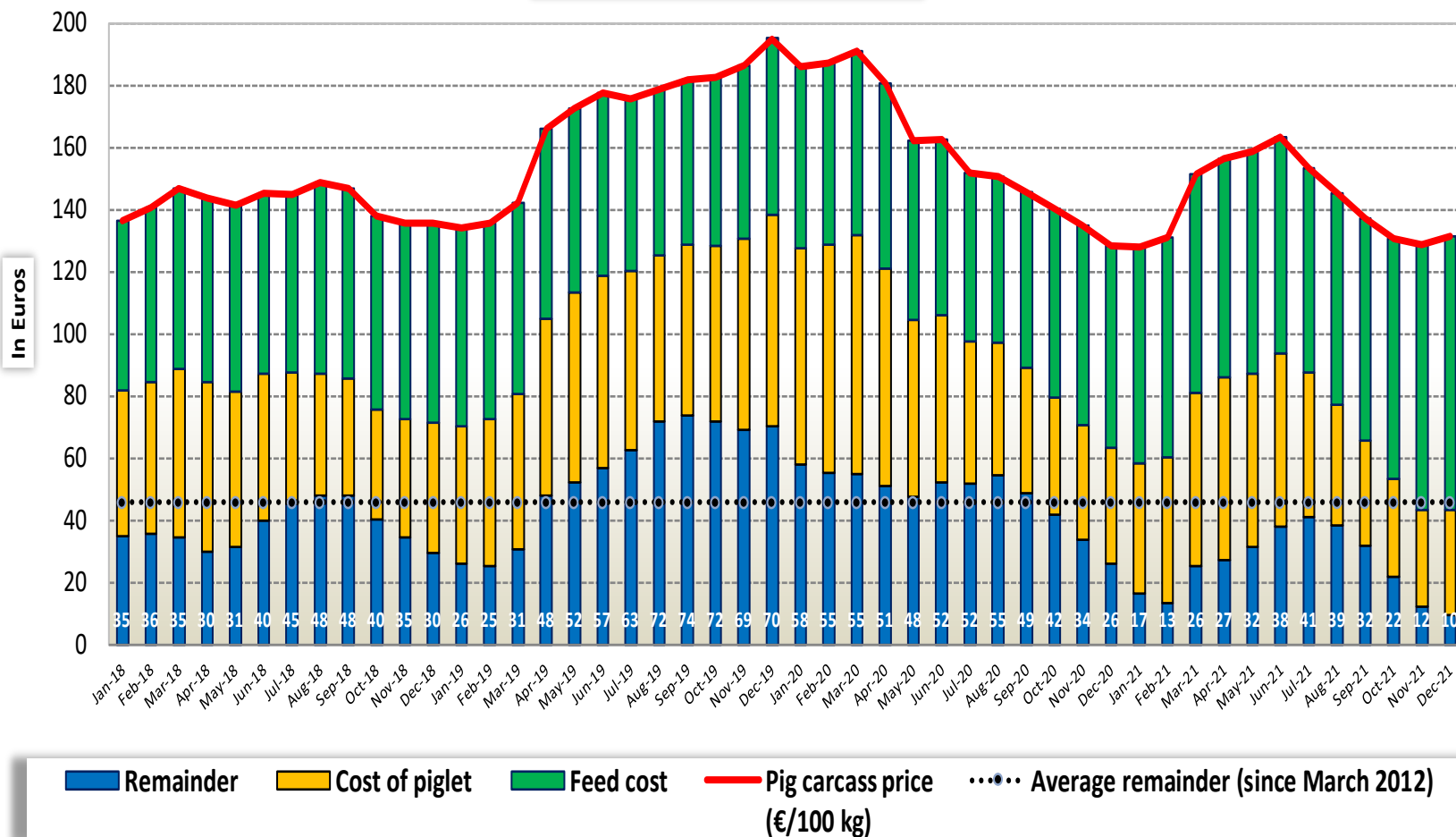
Week 11 latest price ==> 53.45 EUR/head



REMAINDER PIG

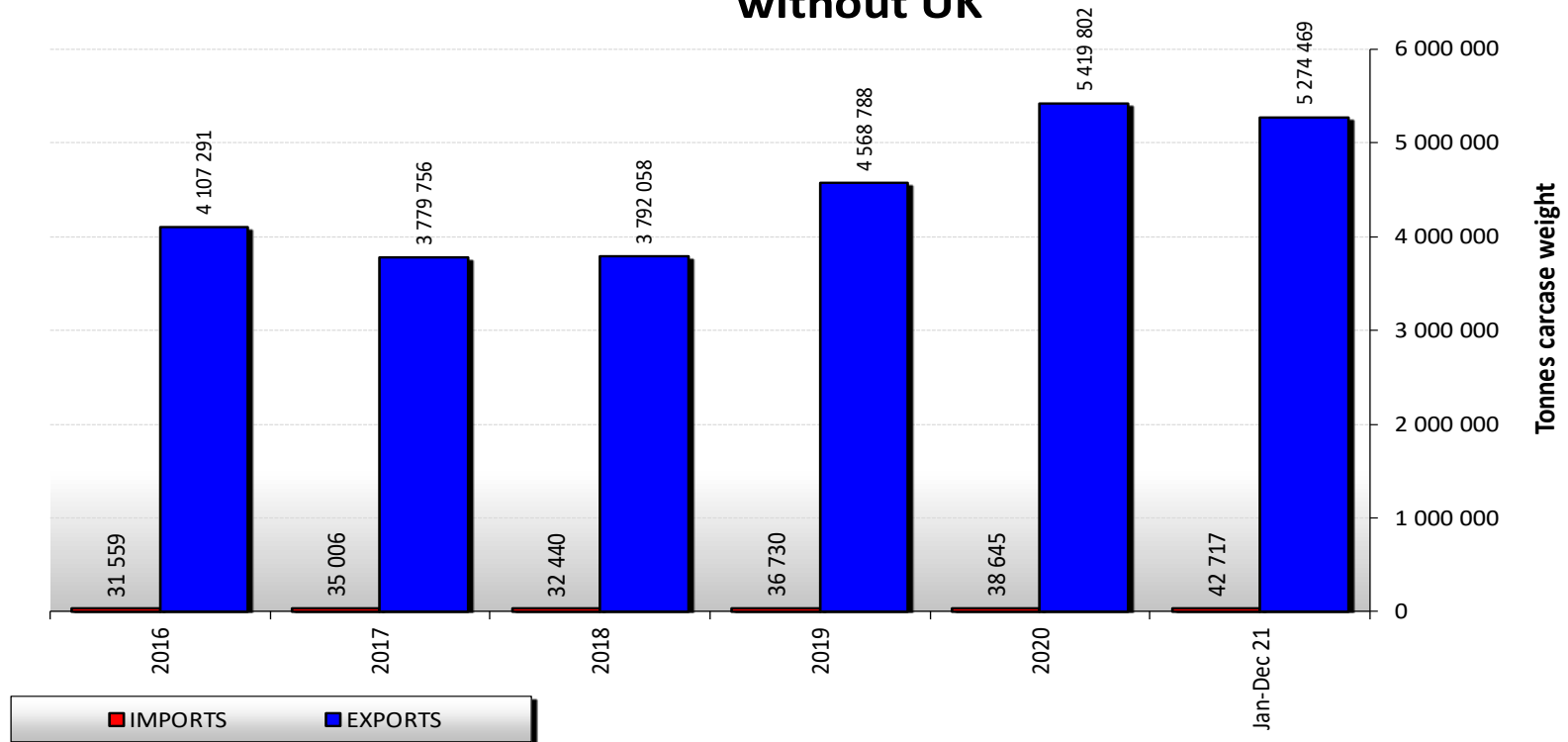
EU EVOLUTION

Remainder for pig fattening



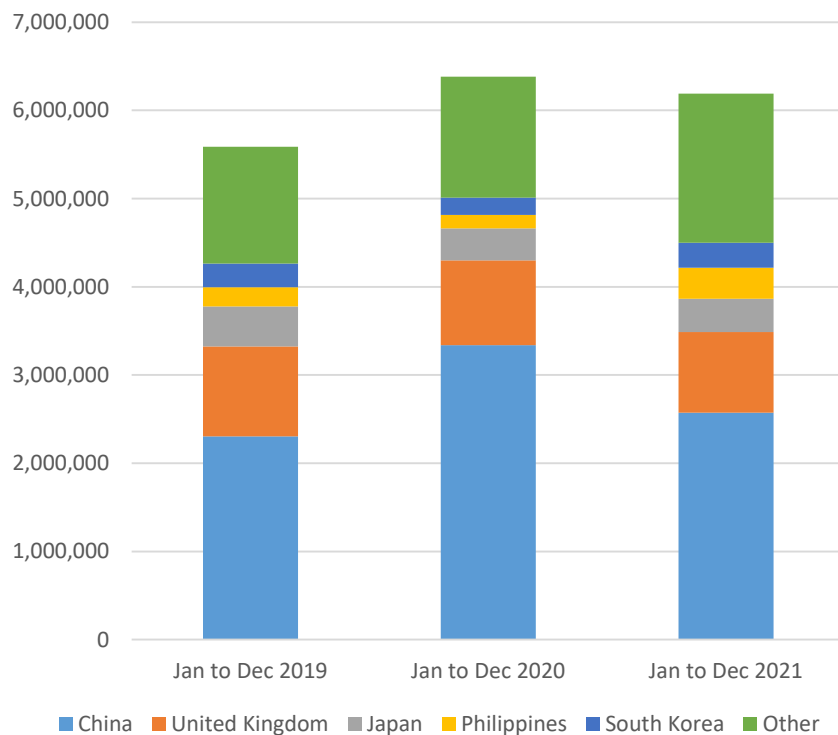
EU trade of PIG products

EU Trade of PIG products (Quantity) without UK

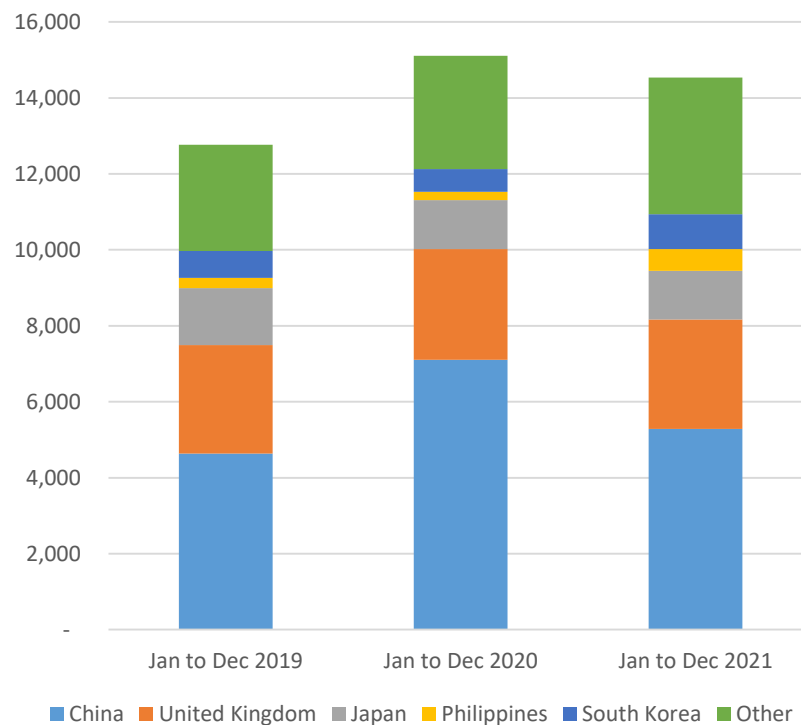


EU exports of selected PIG products Trade figures (COMEXT)

EU EXPORTS of PIGS and PIG MEAT
(in Tons of Carcase Weight)



EU EXPORTS of PIGS and PIG MEAT
(in Millions EUR)



EU exports of selected PIG products: Trade figures (COMEXT – tonnes carcass weight)

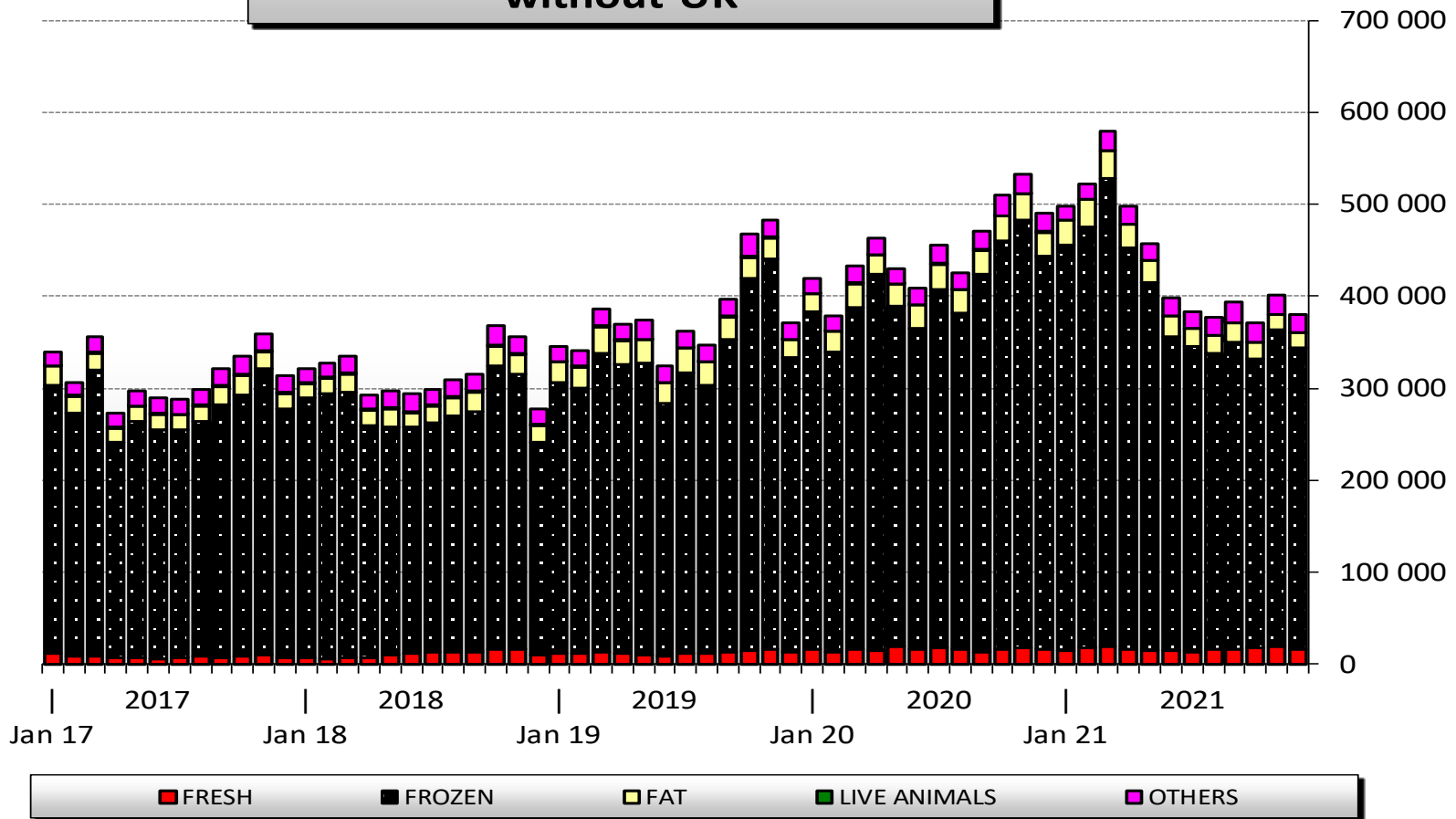
EU Export of PIGS to Main Partners

In Tons of Carcase Weight

	2019		2020		Jan to Dec 2021		Compared to Jan to Dec 2020
	Tons	% Extra EU	Tons	% Extra EU	Tons	% Extra EU	
China	2 305 217	41.3%	3 337 588	52.3%	2 572 364	41.6%	-22.9%
United Kingdom	1 017 681	18.2%	963 538	15.1%	913 971	14.8%	-5.1%
Japan	453 879	8.1%	360 096	5.6%	380 296	6.1%	+5.6%
Philippines	220 143	3.9%	152 947	2.4%	350 170	5.7%	+++
South Korea	265 629	4.8%	195 115	3.1%	284 215	4.6%	+45.7%
Hong Kong	202 951	3.6%	283 590	4.4%	154 001	2.5%	-45.7%
USA	120 363	2.2%	104 388	1.6%	144 431	2.3%	+38.4%
Australia	109 941	2.0%	83 920	1.3%	133 787	2.2%	+59.4%
Vietnam	94 298	1.7%	96 366	1.5%	130 418	2.1%	+35.3%
Ukraine	88 879	1.6%	82 619	1.3%	95 521	1.5%	+15.6%
Ivory Coast	45 896	0.8%	59 578	0.9%	90 311	1.5%	+51.6%
Other Destination	661 435	11.8%	663 595	10.4%	939 399	15.2%	+41.6%
Extra-EU	5 586 312		6 383 340		6 188 884		-3.0%
% Change				+14.3%			

EU Exports of selected PIG products without UK

in Tonnes
(carcase weight)



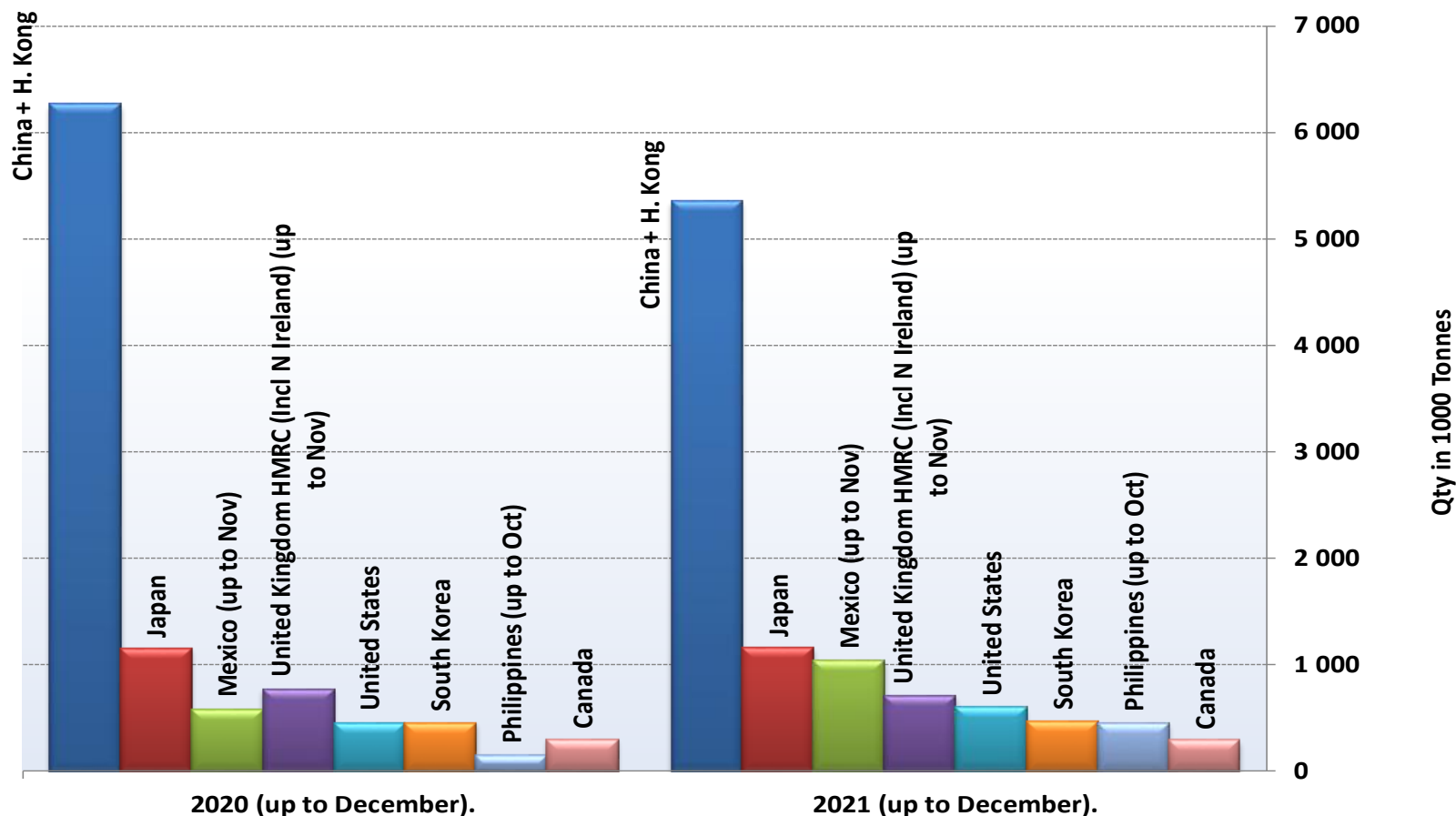
EU imports of selected PIG products
Trade figures (COMEXT – tonnes carcass weight)

EU Import of PIGS from Main Partners

In Tons of Carcase Weight

	2019		2020		Jan to Dec 2021		Compared to Jan to Dec 2020
	Tons	% Extra EU	Tons	% Extra EU	Tons	% Extra EU	
United Kingdom	184 419	83.4%	176 878	82.1%	110 714	72.1%	-37.4%
Switzerland	18 695	8.5%	19 296	9.0%	19 957	13.0%	+3.4%
Serbia	5 046	2.3%	6 108	2.8%	5 728	3.7%	-6.2%
Norway	4 889	2.2%	5 426	2.5%	5 590	3.6%	+3.0%
Extra-EU	221 149		215 522		153 596		-28.7%
% Change				-2.5%			

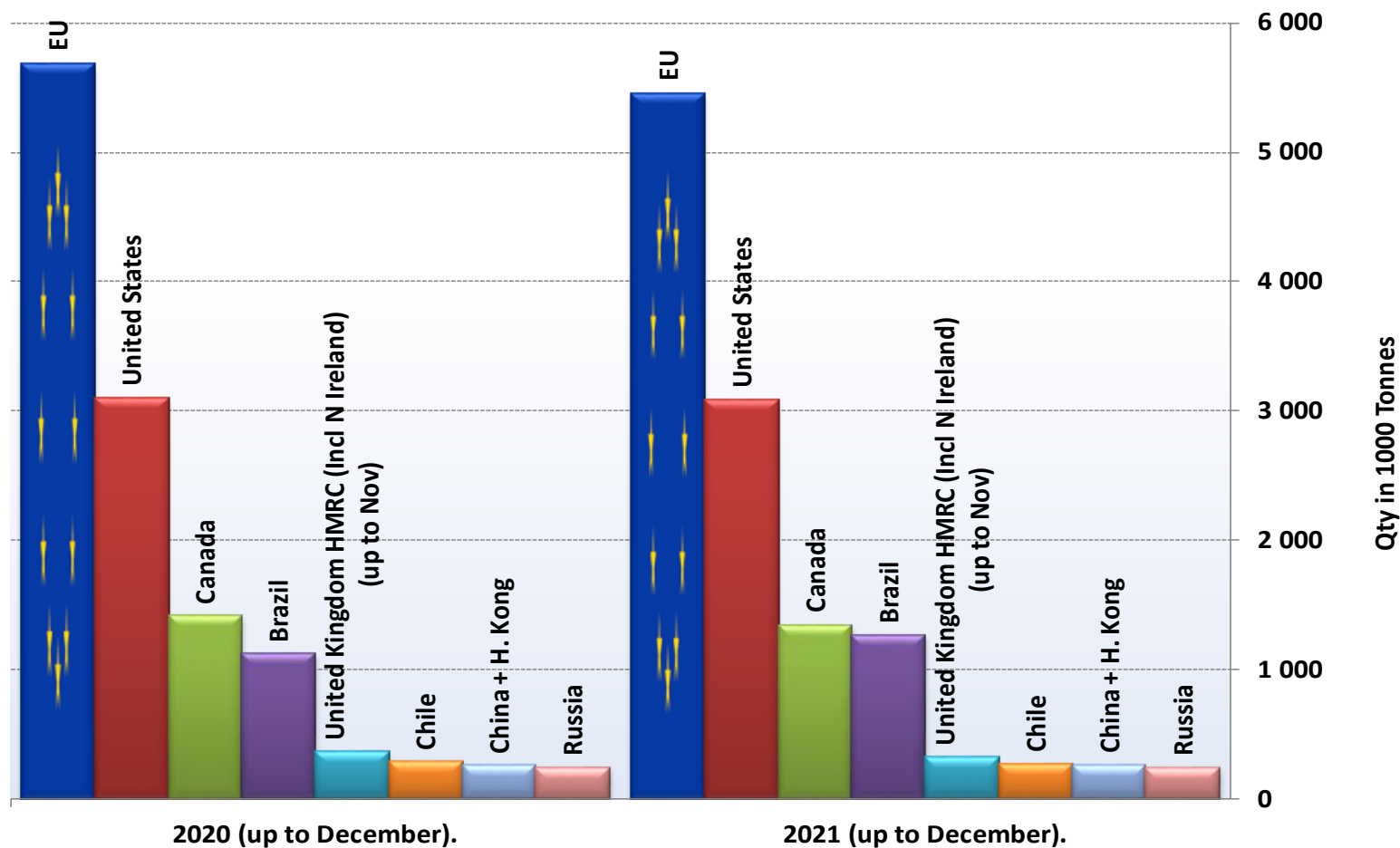
Main Importers of PIG Products (up to December).



Source : GTA

Excl. Live animals

Main Exporters of PIG Products (up to December).



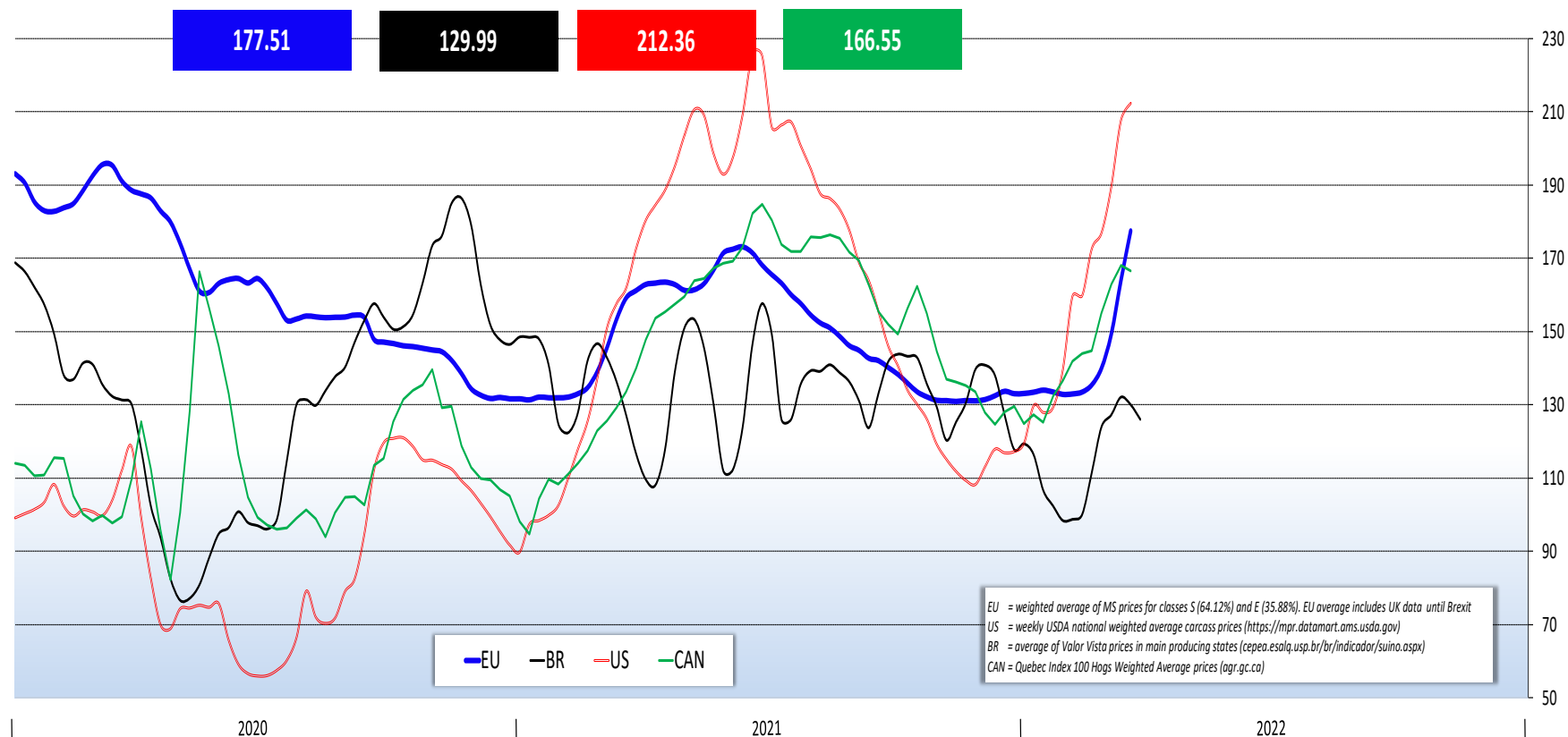
Source : GTA

Excl. Live animals

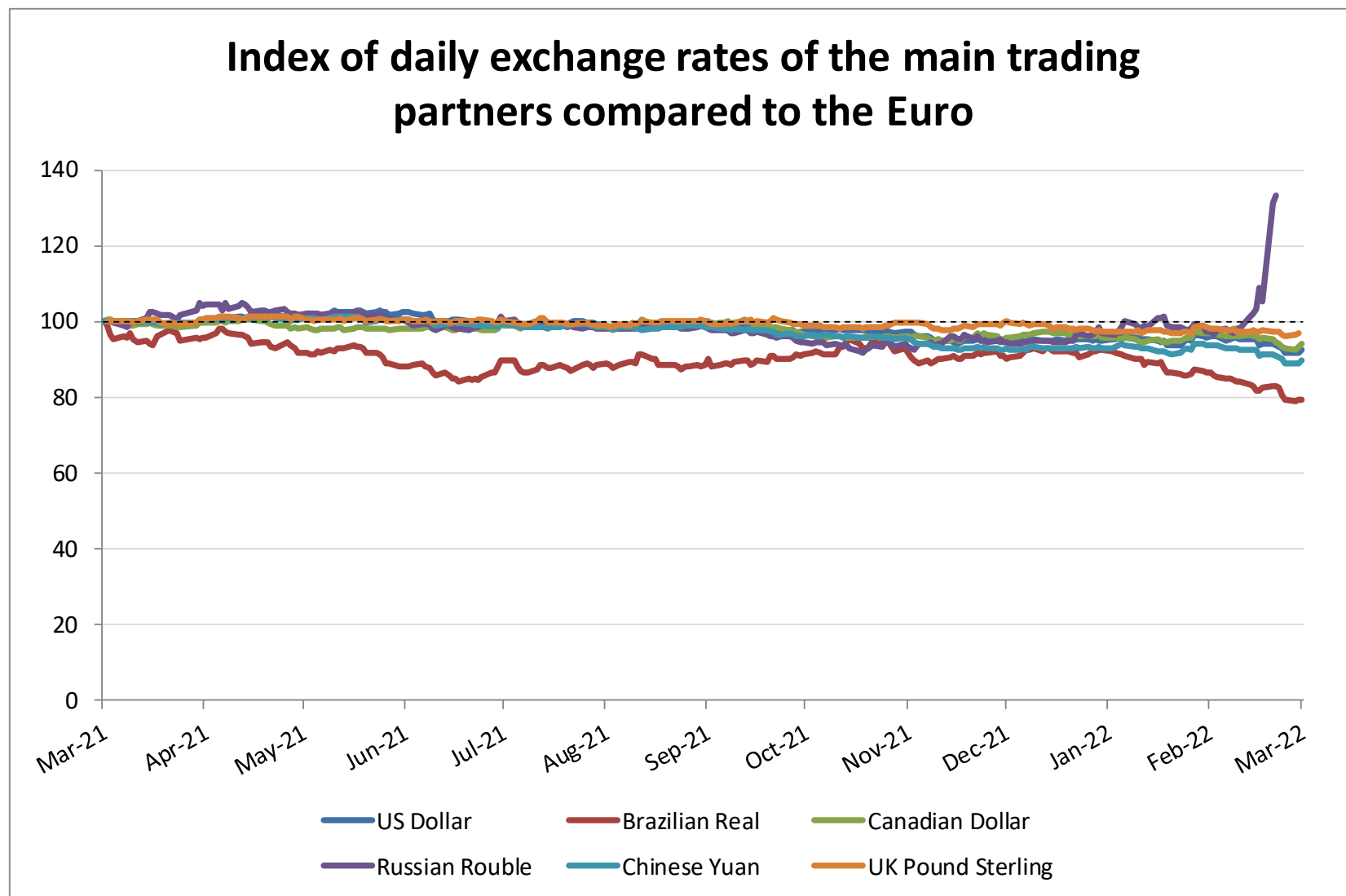
WORLD PIG MARKET

PIG PRICES EU, BR, US, CAN

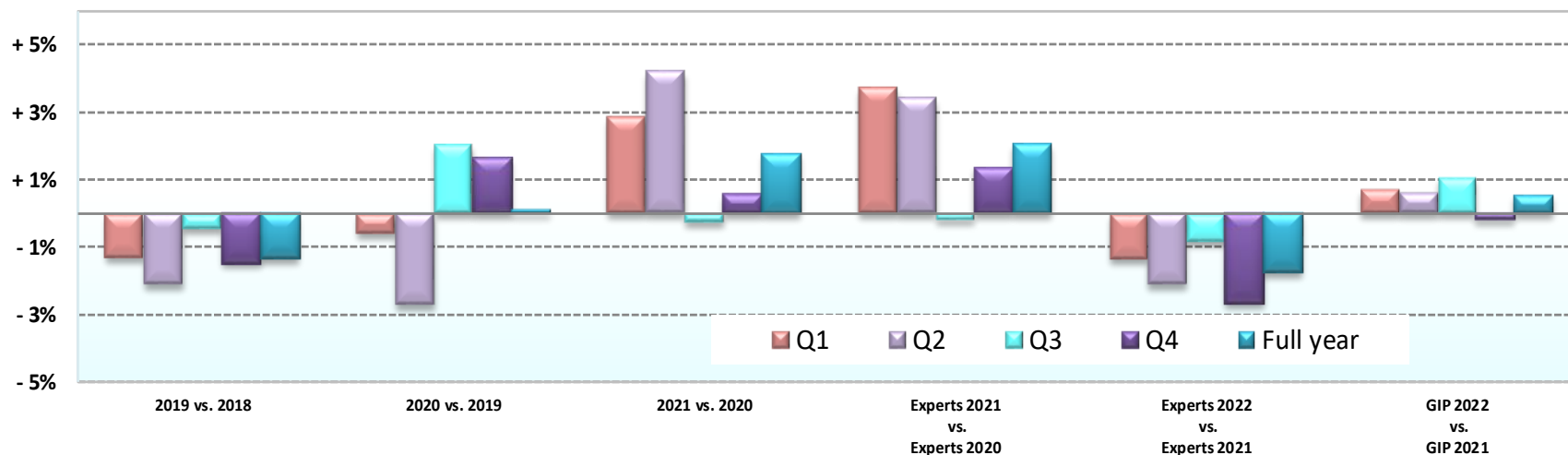
World weekly average Pig prices 2019 - 2021 in Euro / 100 kg carcass weight
(EU, Brazil, USA and Canada)



Exchange rate index / Euro



Change in EU pigmeat slaughter (heads)
(2022 forecast based on GIP and experts estimations)



	Real Slaughter			Experts 2021 vs. Experts 2020	Experts 2022 vs. Experts 2021	GIP 2022 vs. GIP 2021
	2019 vs. 2018	2020 vs. 2019	2021 vs. 2020			
Q1	- 1.3%	- 0.6%	+ 2.8%	+ 3.7%	- 1.4%	+ 0.7%
Q2	- 2.1%	- 2.7%	+ 4.2%	+ 3.4%	- 2.1%	+ 0.6%
Q3	- 0.5%	+ 2.0%	- 0.3%	- 0.2%	- 0.8%	+ 1.1%
Q4	- 1.5%	+ 1.6%	+ 0.6%	+ 1.4%	- 2.7%	- 0.2%
Full year	↑ - 1.4%	↓ + 0.1%	↑ + 1.8%	↑ + 2.1%	↓ - 1.8%	↗ + 0.5%

Follow market updates via the Meat Market Observatory

http://ec.europa.eu/agriculture/market-observatory/meat/index_en.htm > Pigmeat

and check the latest data on the Agri-Food Data Portal:

http://agridata.ec.europa.eu/extensions/DataPortal/agricultural_markets.html > Pigmeat