



# BEEF & VEAL MARKET SITUATION



GREX-19 October 2023

# LIVESTOCK

DECEMBER SURVEY

# EU EVOLUTION TOTAL BOVINE

Dec 1000 Hd	TOTAL LIVESTOCK				%Var 2022 2021	BOVINE < 1 Year				%Var 2022 2021	BOVINE 1-2 Year				%Var 2022 2021	BOVINE > 2 Year				%Var 2022 2021
	2019	2020	2021	2022		2019	2020	2021	2022		2019	2020	2021	2022		2019	2020	2021	2022	
BE	2 373	2 335	2 310	2 286	-1.1%	722	712	713	694	-2.7%	464	461	454	454	-0.0%	1 188	1 163	1 143	1 138	-0.5%
BG	527	589	611	580	-5.1%	100	112	121	108	-11.0%	58	71	67	70	+3.8%	369	406	423	402	-4.8%
CZ	1 367	1 340	1 359	1 390	+2.3%	411	405	408	407	-0.4%	299	295	296	314	+6.1%	657	640	655	669	+2.2%
DK	1 500	1 500	1 480	1 466	-0.9%	522	524	516	510	-1.2%	280	279	280	281	+0.4%	698	697	684	675	-1.3%
DE	11 640	11 302	11 040	10 997	-0.4%	3 485	3 405	3 355	3 308	-1.4%	2 751	2 639	2 569	2 600	+1.2%	5 403	5 258	5 116	5 089	-0.5%
EE	254	253	251	250	-0.5%	71	72	69	69	+0.4%	50	49	51	49	-3.7%	133	132	131	132	+0.3%
IE	6 560	6 529	6 649	6 552	-1.5%	1 962	2 057	2 108	1 995	-5.3%	1 741	1 708	1 775	1 810	+2.0%	2 856	2 765	2 766	2 746	-0.7%
EL	530	632	614	582	-5.3%	157	162	176	156	-11.5%	91	145	114	107	-6.2%	283	325	324	319	-1.6%
ES	6 600	6 636	6 576	6 455	-1.8%	2 529	2 541	2 319	2 489	+7.3%	857	853	1 016	785	-22.8%	3 214	3 242	3 240	3 181	-1.8%
FR	18 173	17 816	17 330	16 986	-2.0%	5 125	5 119	4 945	4 868	-1.6%	3 183	3 063	3 021	2 992	-1.0%	9 865	9 634	9 364	9 127	-2.5%
HR	420	423	428	422	-1.4%	151	146	156	149	-4.5%	107	111	107	112	+4.7%	162	166	165	161	-2.4%
IT	6 377	6 400	6 280	6 049	-3.7%	1 759	1 774	1 722	1 563	-9.2%	1 588	1 595	1 562	1 520	-2.7%	3 030	3 031	2 997	2 966	-1.0%
CY	74	83	85	81	-3.7%	25	27	27	25	-7.4%	12	14	15	15	-2.8%	38	42	43	42	-1.8%
LV	395	399	393	391	-0.5%	108	112	107	107	+0.4%	65	65	68	66	-3.3%	222	222	219	219	-0.1%
LT	635	630	629	642	+2.1%	167	169	166	173	+4.4%	132	129	135	130	-3.6%	336	332	328	339	+3.3%
LU	192	191	187	186	-0.6%	50	50	49	48	-2.1%	41	41	40	41	+0.1%	101	100	98	98	-0.1%
HU	909	933	910	894	-1.7%	258	266	269	258	-4.2%	193	195	153	159	+3.6%	458	472	487	477	-2.1%
MT	14	14	14	14	+1.3%	4	4	4	4	+1.6%	3	3	3	3	-3.3%	7	7	7	7	+3.3%
NL	3 721	3 691	3 705	3 751	+1.2%	1 528	1 510	1 519	1 536	+1.1%	440	465	482	496	+2.9%	1 752	1 716	1 704	1 719	+0.9%
AT	1 880	1 855	1 870	1 861	-0.5%	605	599	611	597	-2.3%	426	414	421	430	+2.1%	848	842	838	834	-0.5%
PL	6 262	6 279	6 379	6 448	+1.1%	1 748	1 735	1 802	1 929	+7.0%	1 757	1 800	1 915	1 699	-11.3%	2 758	2 744	2 662	2 821	+6.0%
PT	1 675	1 691	1 641	1 579	-3.7%	531	526	528	516	-2.2%	240	257	214	201	-6.2%	903	909	899	862	-4.0%
RO	1 923	1 875	1 827	1 834	+0.4%	400	369	347	347	-0.1%	223	225	222	228	+2.8%	1 300	1 281	1 258	1 259	+0.1%
SI	483	486	483	465	-3.7%	151	153	157	149	-4.8%	136	133	131	130	-0.6%	197	199	195	186	-4.8%
SK	432	442	434	433	-0.2%	122	126	125	124	-0.1%	83	87	82	83	+1.7%	227	229	228	225	-0.9%
FI	841	835	830	822	-1.0%	287	292	287	283	-1.3%	205	199	205	203	-1.1%	349	344	338	336	-0.6%
SE	1 405	1 391	1 390	1 391	+0.0%	453	464	460	461	+0.2%	339	323	334	333	-0.4%	613	603	596	597	+0.2%
EU	77 161	76 551	75 705	74 808	-1.2%	23 431	23 428	23 065	22 872	-0.8%	15 764	15 621	15 732	15 308	-2.7%	37 966	37 503	36 908	36 627	-0.8%

Source : EStat Newcronos

EU %Var is calculated considering only countries available in 2021 AND 2022

# LIVESTOCK

DECEMBER SURVEY

# EU EVOLUTION COWS

Dec 1000 Hd	TOTAL COWS				%Var 2022 2021	DAIRY COWS				%Var 2022 2021	OTHER COWS				%Var 2022 2021
	2019	2020	2021	2022		2019	2020	2021	2022		2019	2020	2021	2022	
BE	939	921	917	913	-0.4%	538	538	537	544	+1.2%	401	383	379	370	-2.6%
BG	343	382	397	376	-5.2%	227	242	230	213	-7.6%	116	140	166	163	-1.8%
CZ	570	560	574	579	+0.9%	361	357	362	357	-1.6%	209	203	212	223	+5.2%
DK	645	646	635	627	-1.3%	563	565	559	556	-0.5%	83	80	76	70	-7.9%
DE	4 651	4 548	4 445	4 420	-0.6%	4 012	3 921	3 833	3 810	-0.6%	640	626	612	610	-0.3%
EE	116	116	115	114	-0.4%	85	84	84	84	+0.0%	31	32	31	31	-1.8%
IE	2 383	2 379	2 395	2 372	-1.0%	1 426	1 456	1 505	1 510	+0.3%	957	923	890	862	-3.1%
EL	242	210	213	227	+6.4%	86	90	91	81	-11.8%	156	120	122	147	+20.1%
ES	2 881	2 909	2 900	2 888	-0.4%	813	811	809	810	+0.1%	2 068	2 099	2 091	2 078	-0.6%
FR	7 505	7 379	7 204	7 020	-2.6%	3 491	3 406	3 322	3 231	-2.7%	4 014	3 974	3 882	3 790	-2.4%
HR	142	144	142	138	-2.8%	130	110	102	79	-22.5%	12	34	40	59	+47.5%
IT	2 237	2 243	2 193	2 348	+7.1%	1 876	1 871	1 844	1 865	+1.1%	362	372	349	483	+38.6%
CY	35	40	40	38	-3.5%	35	39	39	38	-1.8%	0	0	1	0	-93.2%
LV	195	196	193	191	-1.0%	138	136	131	128	-2.6%	56	60	61	63	+2.4%
LT	299	295	290	291	+0.4%	241	233	225	224	-0.5%	58	62	65	67	+3.4%
LU	79	78	78	77	-0.5%	54	54	55	55	+1.4%	25	24	23	22	-4.9%
HU	412	414	423	421	-0.4%	243	247	281	278	-1.1%	169	167	142	143	+0.8%
MT	6	6	6	6	+3.4%	6	6	6	6	+4.3%	0	0	0	0	-13.6%
NL	1 633	1 612	1 599	1 614	+0.9%	1 590	1 569	1 554	1 570	+1.0%	43	43	45	44	-2.2%
AT	720	715	712	708	-0.5%	524	525	526	551	+4.6%	195	191	186	158	-15.0%
PL	2 406	2 391	2 289	2 172	-5.1%	2 167	2 126	2 035	2 037	+0.1%	239	266	254	135	-47.0%
PT	731	739	739	715	-3.3%	234	233	230	222	-3.7%	497	507	509	493	-3.1%
RO	1 166	1 145	1 116	1 112	-0.3%	1 139	1 122	1 082	1 076	-0.6%	27	23	34	36	+8.0%
SI	166	167	165	158	-4.8%	101	99	101	93	-7.6%	65	68	65	64	-0.4%
SK	192	192	191	190	-0.6%	126	122	120	117	-2.6%	66	69	71	73	+2.7%
FI	318	316	311	306	-1.4%	259	256	249	243	-2.2%	59	61	62	63	+2.0%
SE	500	499	497	496	-0.1%	301	304	300	298	-0.6%	198	194	197	199	+0.7%
EU	31 513	31 241	30 778	30 519	-0.8%	20 766	20 522	20 213	20 074	-0.7%	10 748	10 718	10 565	10 445	-1.1%

Source : EStat Newcronos

EU %Var is calculated considering only countries available in 2021 AND 2022

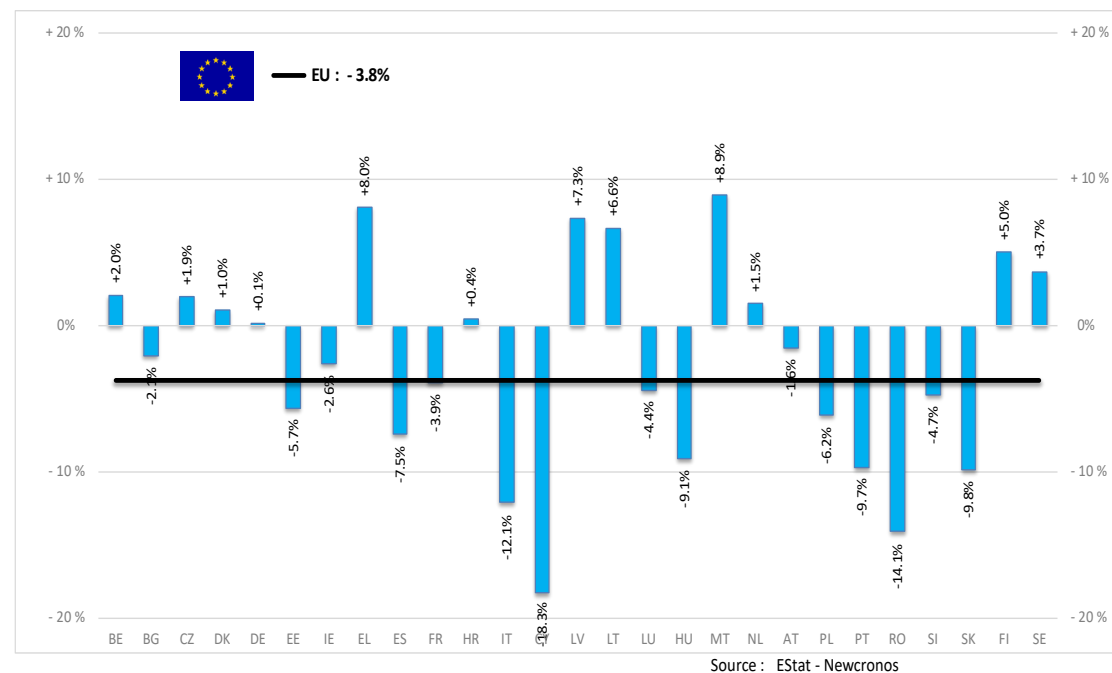
19 October 2023

# PRODUCTION

# % EVOLUTION HEADS

HEADS	Jan-Jul 23/22
<b>EU</b>	<b>-3.8%</b>
Bull	-4.4%
Bullock	-1.0%
Cow	-3.9%
Heifer	-3.7%
Calve	-3.5%
Young cattle	-4.0%
Meat of bovine animals	-3.8%

Estimates for last month of period :

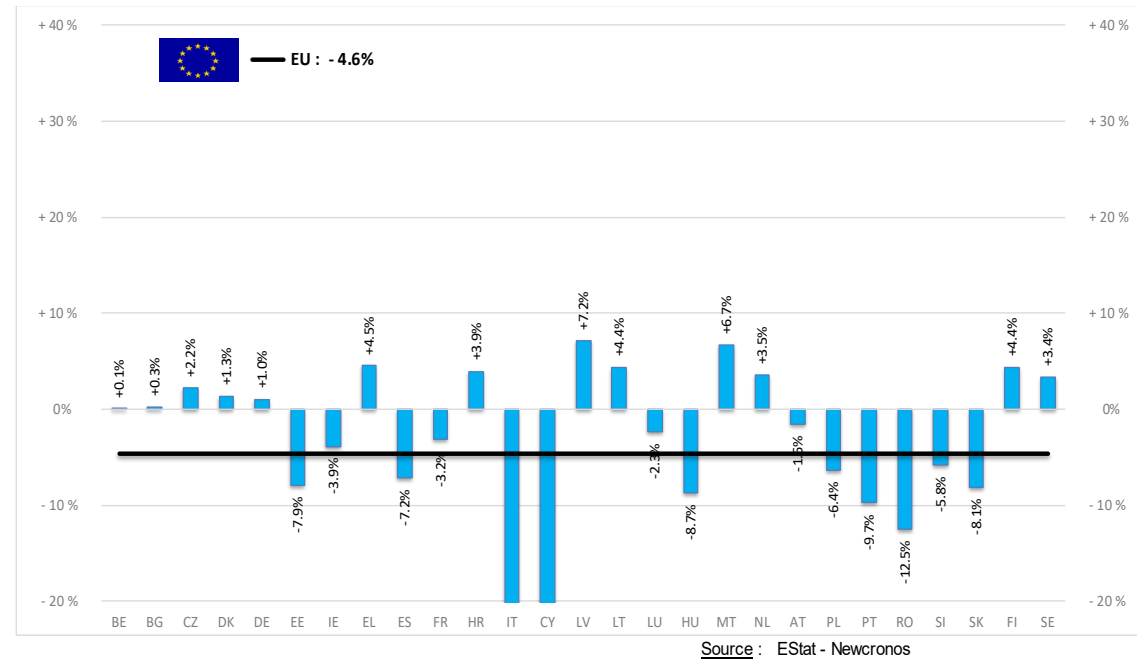


# PRODUCTION

# % EVOLUTION TONNES

TONNES	Jan-Jul 23/22
<b>EU</b>	<b>-4.6%</b>
Bull	-4.1%
Bullock	-2.3%
Cow	-4.2%
Heifer	-5.9%
Calve	-5.7%
Young cattle	-6.0%
<b>Meat of bovine animals</b>	<b>-4.6%</b>

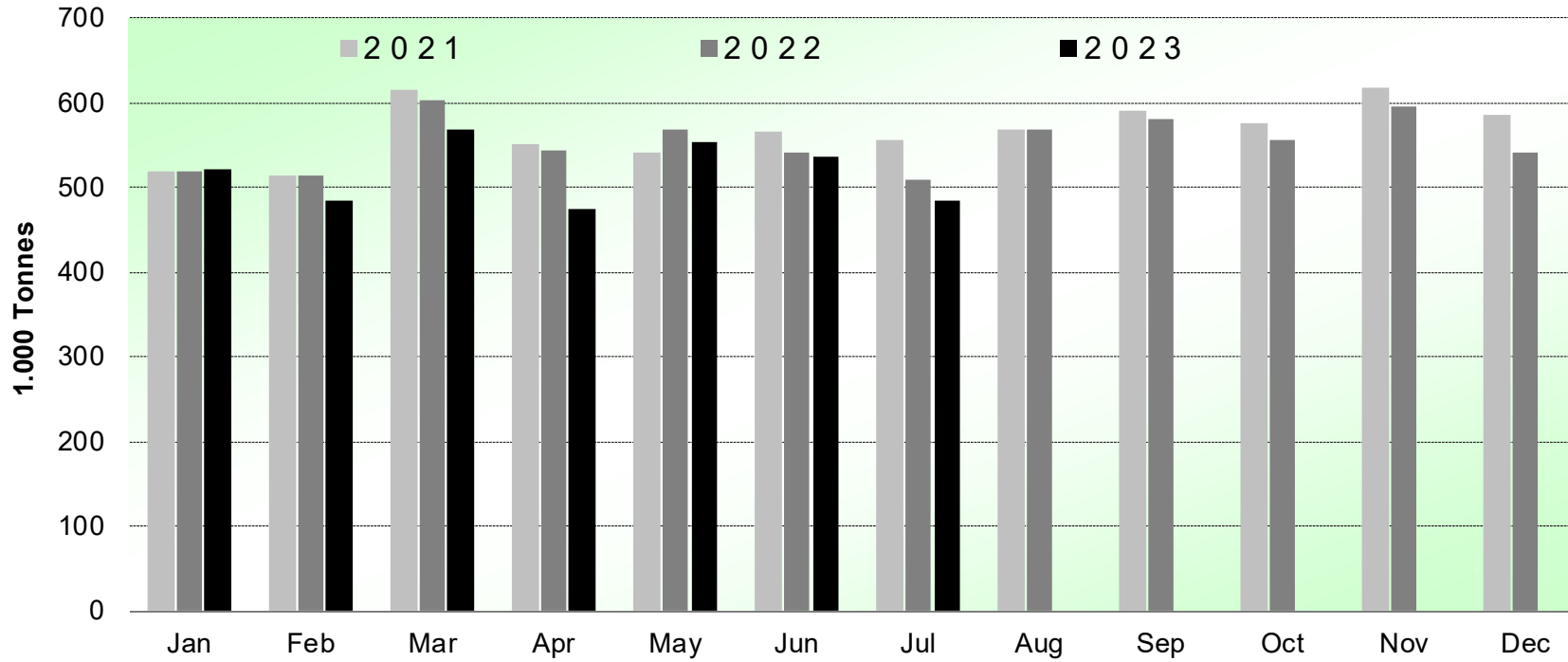
Estimates for last month of period :



# PRODUCTION

# HISTORIC TONNES

## Beef & Veal Production (EU Slaughtering) - Tonnes



Source : EStat-Newcronos

# PRICES CARCASSES

Dashboard

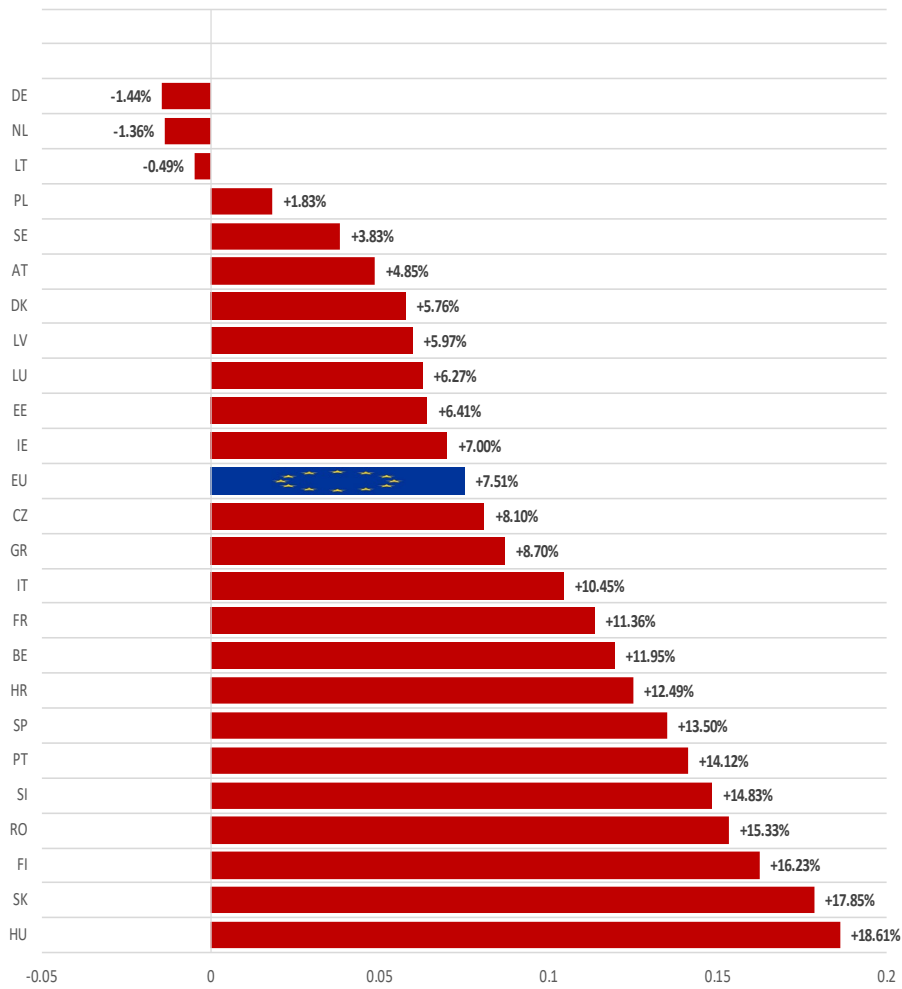
EU Prices week		40	Evolution since last week	Evolution since last month	Evolution since last year
<b>Carcasse</b>	Average A/C/Z-R3	484.5	+ 0.2%	- 0.3%	- 1.8%
	Young Bovines (Z)	497.8	+ 0.5%	+ 0.0%	+ 0.8%
	Young Bulls (A)	482.2	+ 0.3%	- 0.2%	- 2.6%
	Steers (C)	478.2	- 1.1%	- 1.3%	- 1.1%
	Cows (D)	404.8	- 0.5%	- 2.4%	- 6.4%
	Heifers (E)	506.6	+ 0.2%	+ 0.3%	- 0.5%
	Calves slaughtered <8M	598.0	- 0.0%	- 8.3%	- 4.8%
<b>Live Animals</b>	Male Calves Dairy Type	108.3	- 2.4%	- 9.1%	+ 27.6%
	Male Calves Beef Type	241.1	- 1.6%	- 4.5%	+ 6.7%
	Young Store Cattle	3.21	- 1.5%	- 0.1%	+ 2.9%
	Yearling Male Store Cattle	3.56	- 1.1%	+ 1.7%	+ 7.3%
	Yearling Female Store Cattle	2.76	- 1.6%	- 1.7%	+ 0.0%

Sources : MSs notifications (Regulation (EU) 1182/2017 and 1184/2017)

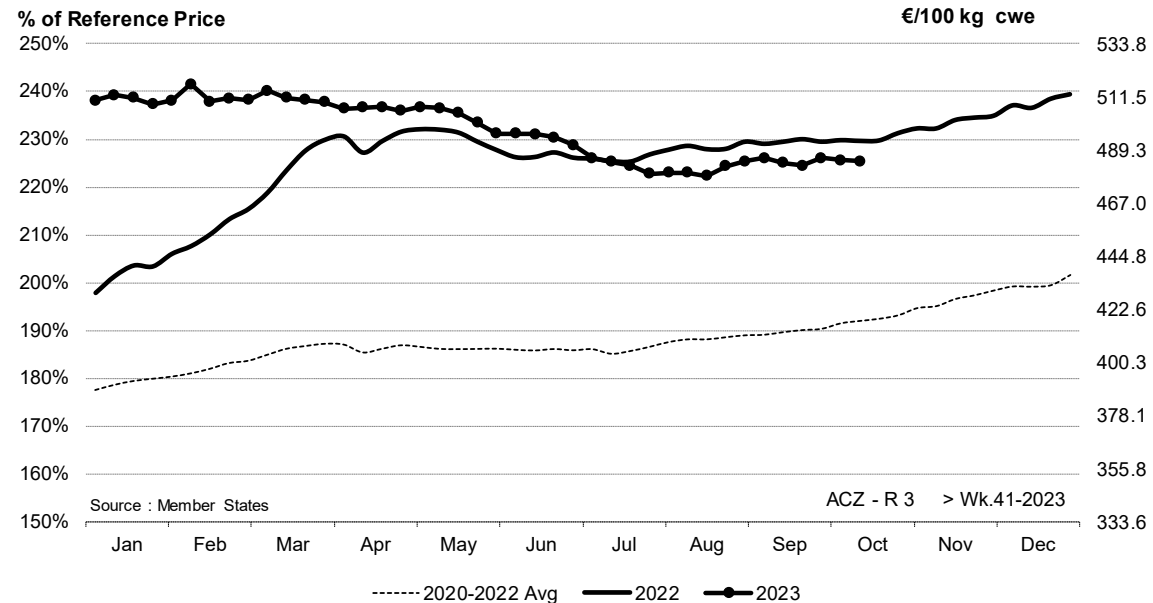
# PRICES CARCASSES

# EU EVOLUTION A/C/Z.R3

EU ACZ R3 Price Comparison between average monthly price October 2022 - September 2023 compared to October 2021 - September 2022



ACZ - R 3 > Wk.41-2023

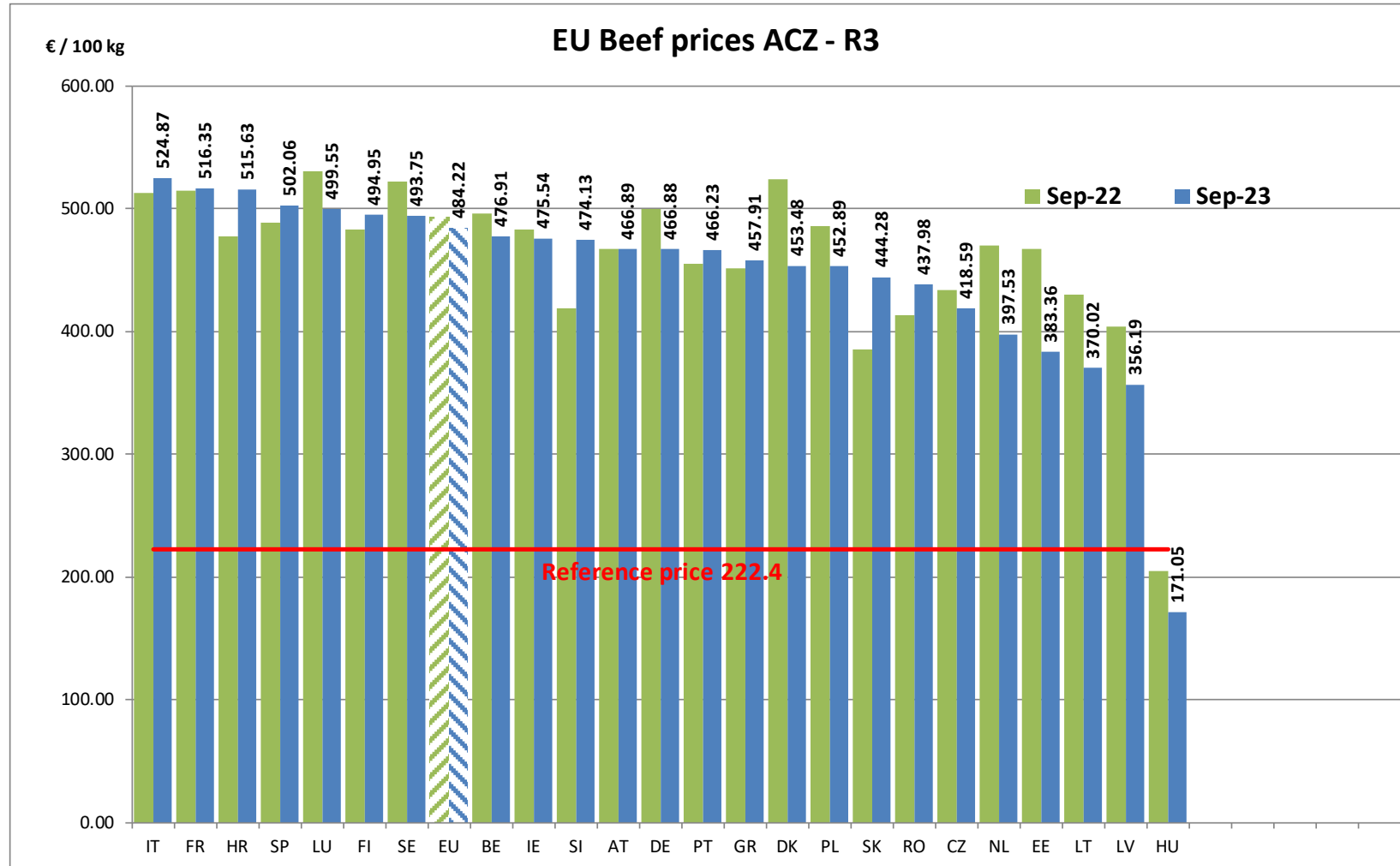


Price in week 41 :	<b>484.77</b>	Average price in September 2023 :	<b>484.66</b>
% change y/y :	<b>-1.70%</b>	% change y/y :	<b>-1.66%</b>
% Ref. Price in wk 0 :	<b>218.0%</b>		



# PRICES CARCASSES

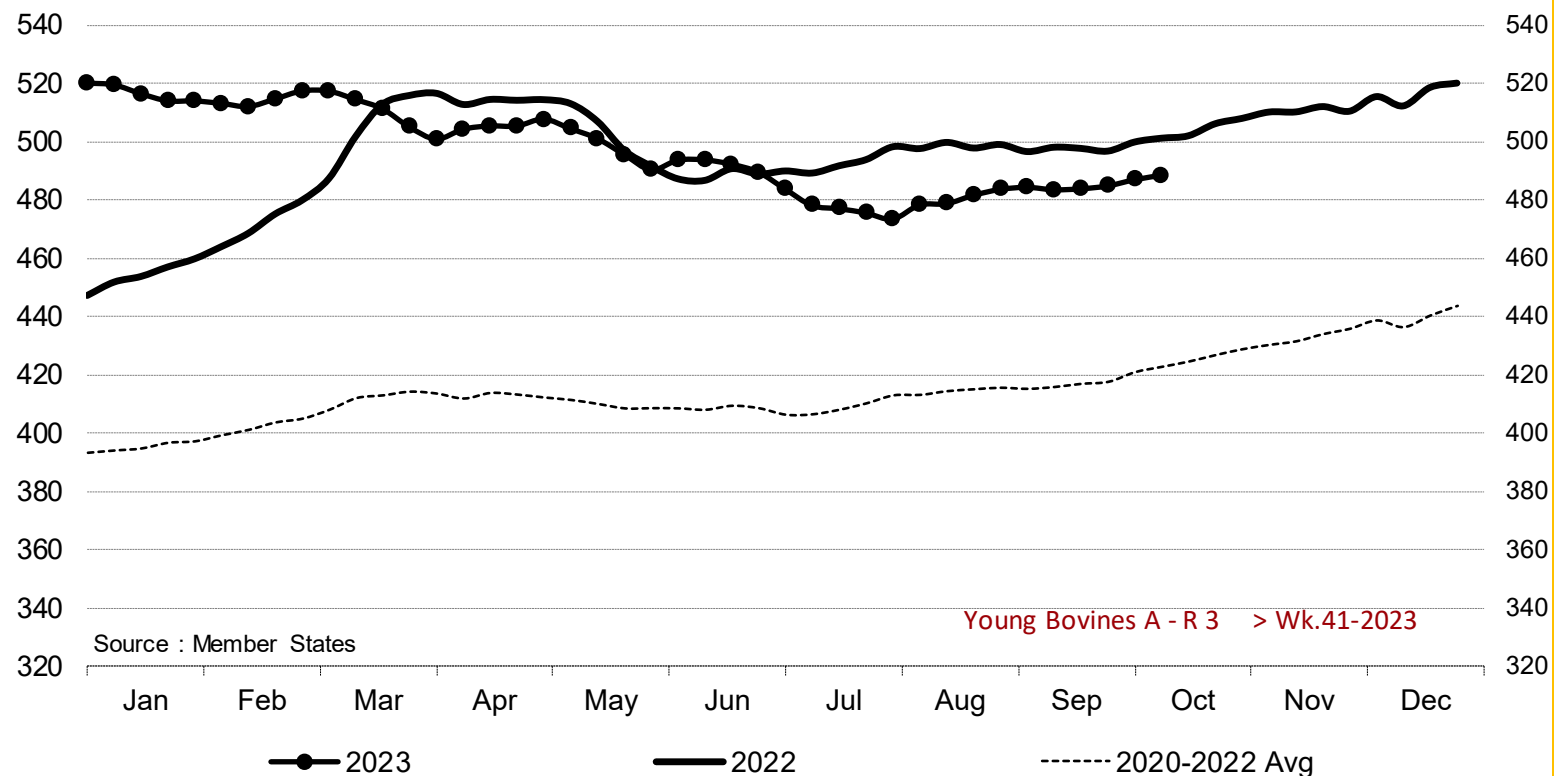
## EU EVOLUTION A/C/Z.R3



# PRICES CARCASSES

# EU EVOLUTION YOUNG BULL – A.R3

Young Bovines A - R 3 > Wk.41-2023



Price in week 41 : **488.62**  
 % change y/y : **- 2.5%**

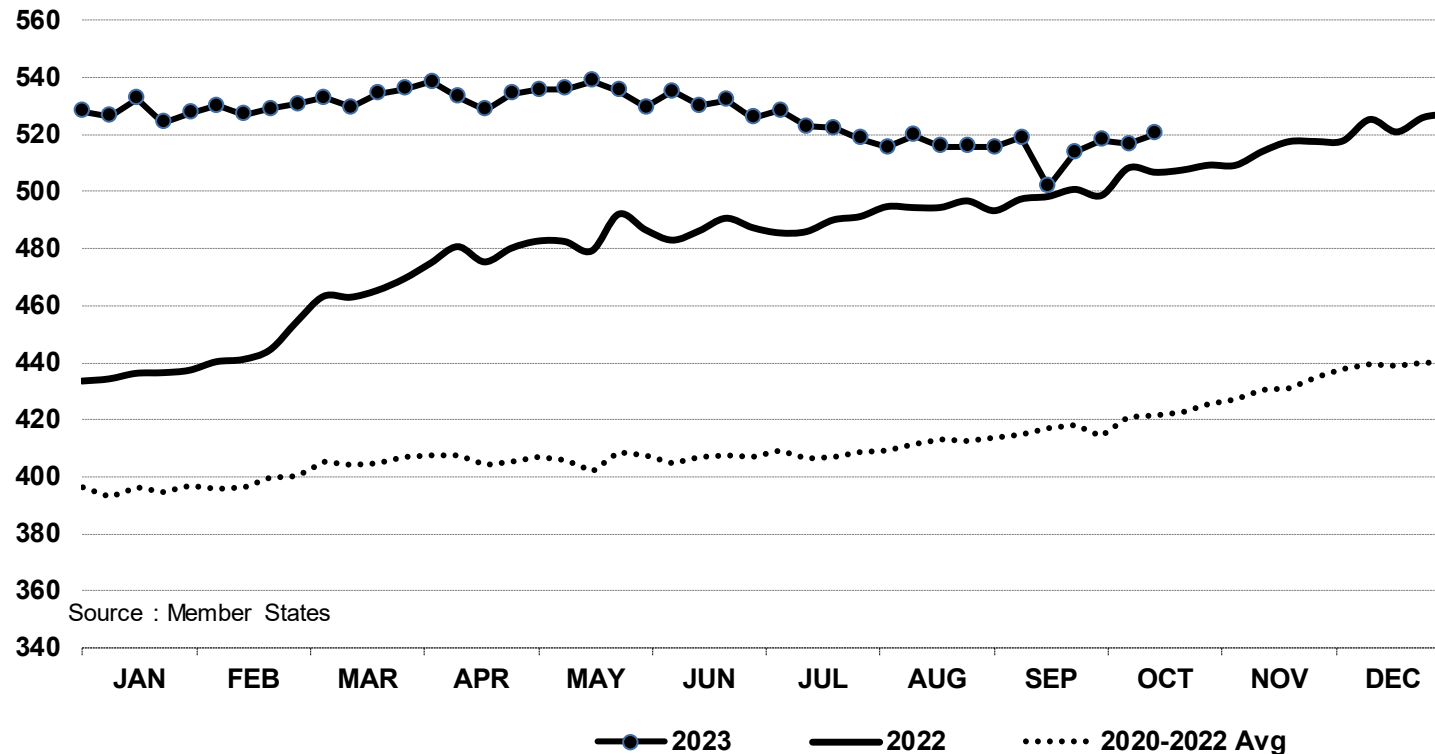
Average price in September 2023 : **484.22**  
 % change y/y : **- 2.7%**

# PRICES CARCASSES

## E.U. EVOLUTION YOUNG BOVINE 8-12M- Z.R3

In € / 100 kg

Young Bovines 8-12m Z - R 3 > Wk.41-2023



Price in week 41 : **520.20**

14/09/2023

Average price in September 2023 : **513.28**

% change y/y : **+ 2.6%**

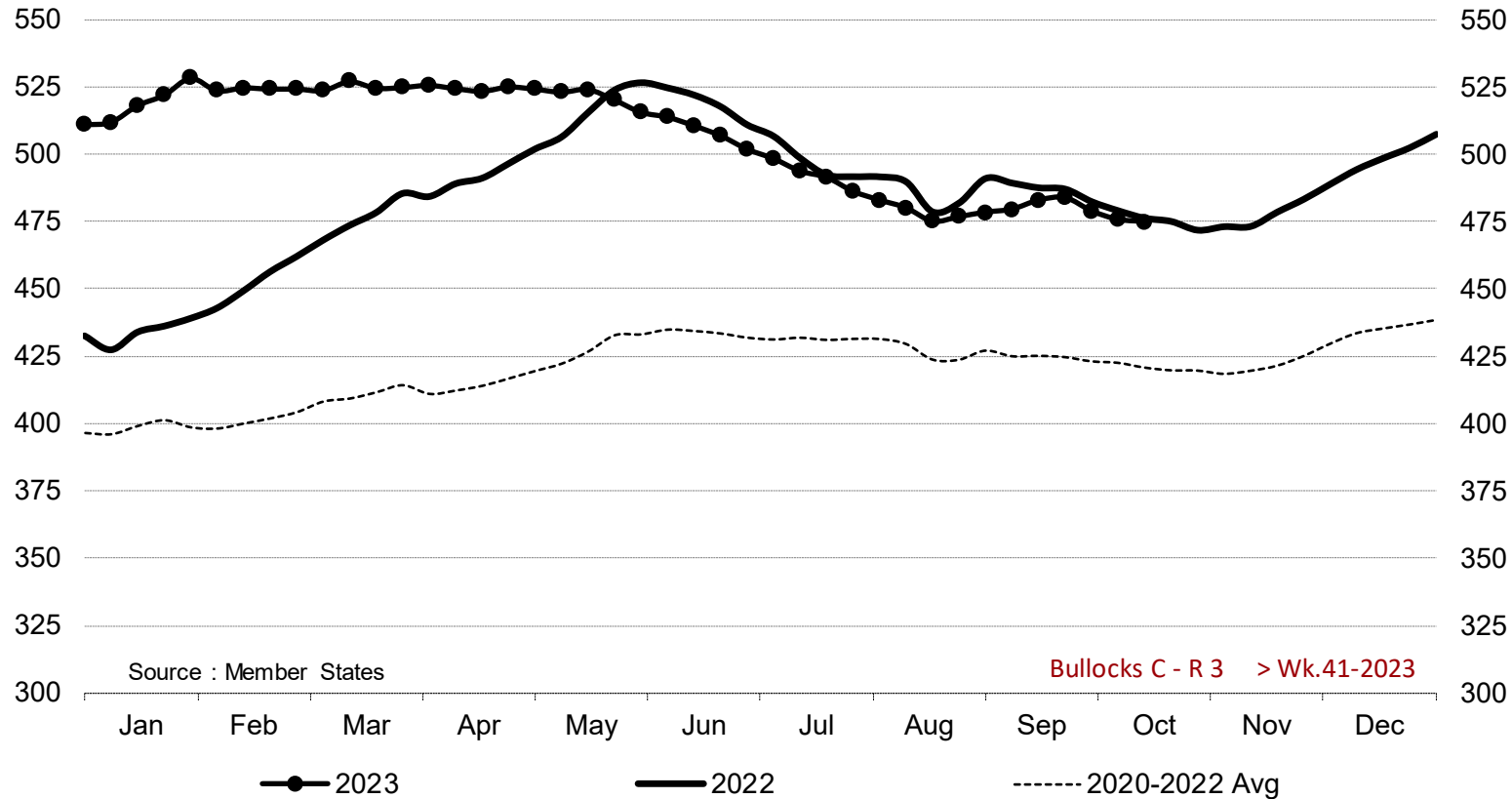
% change y/y : **+ 3.0%**

19 October 2023

# PRICES CARCASSES

## E.U. EVOLUTION STEER – C.R3

Bullocks C - R 3 > Wk.41-2023



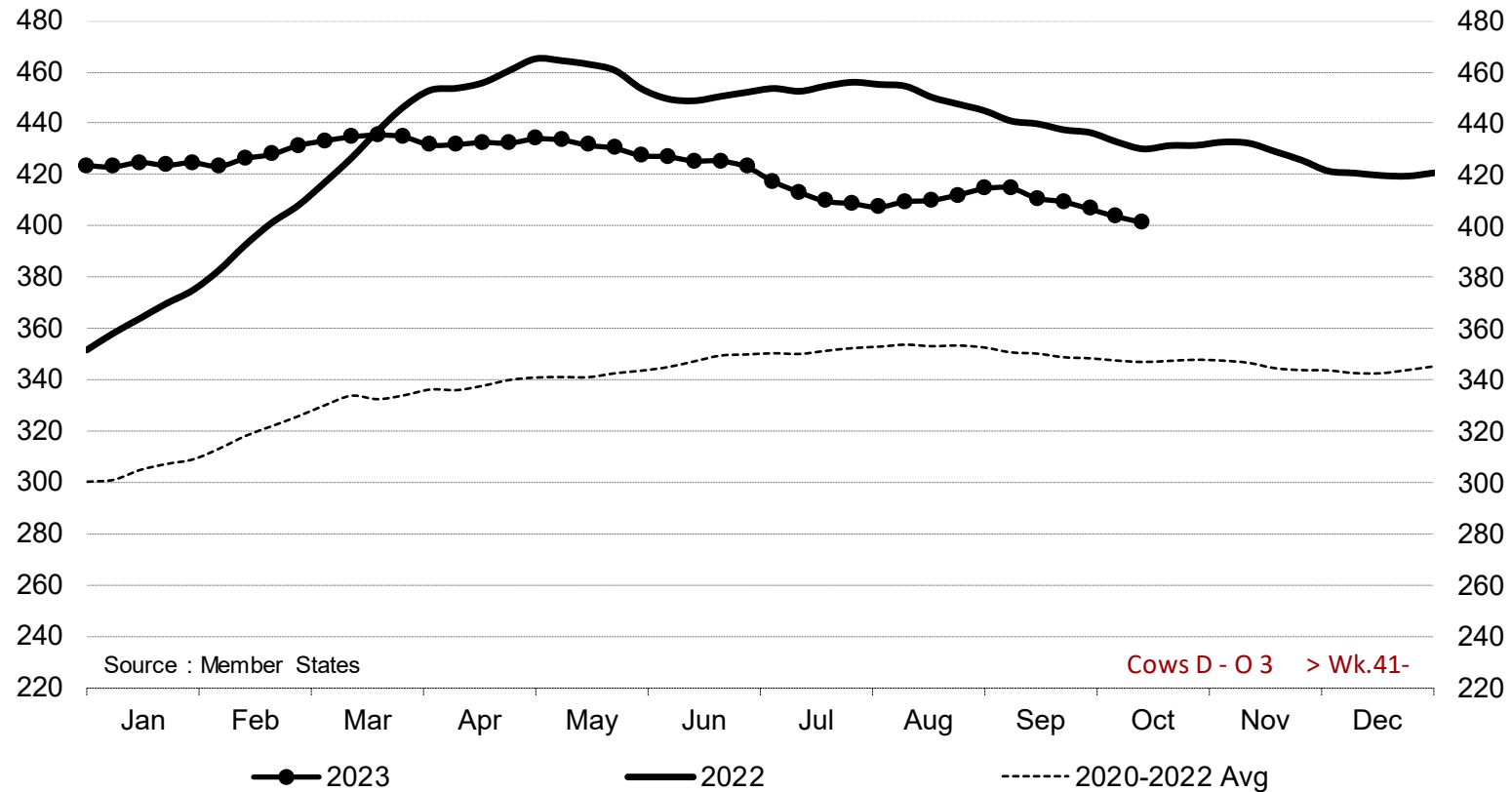
Price in week 41 : **474.81**  
 % change y/y : **- 0.3%**

Average price in September 2023 : **480.93**  
 % change y/y : **- 1.3%**

# PRICES CARCASSES

E.U. EVOLUTION  
COW – D.03

Cows D - O 3 > Wk.41-2023



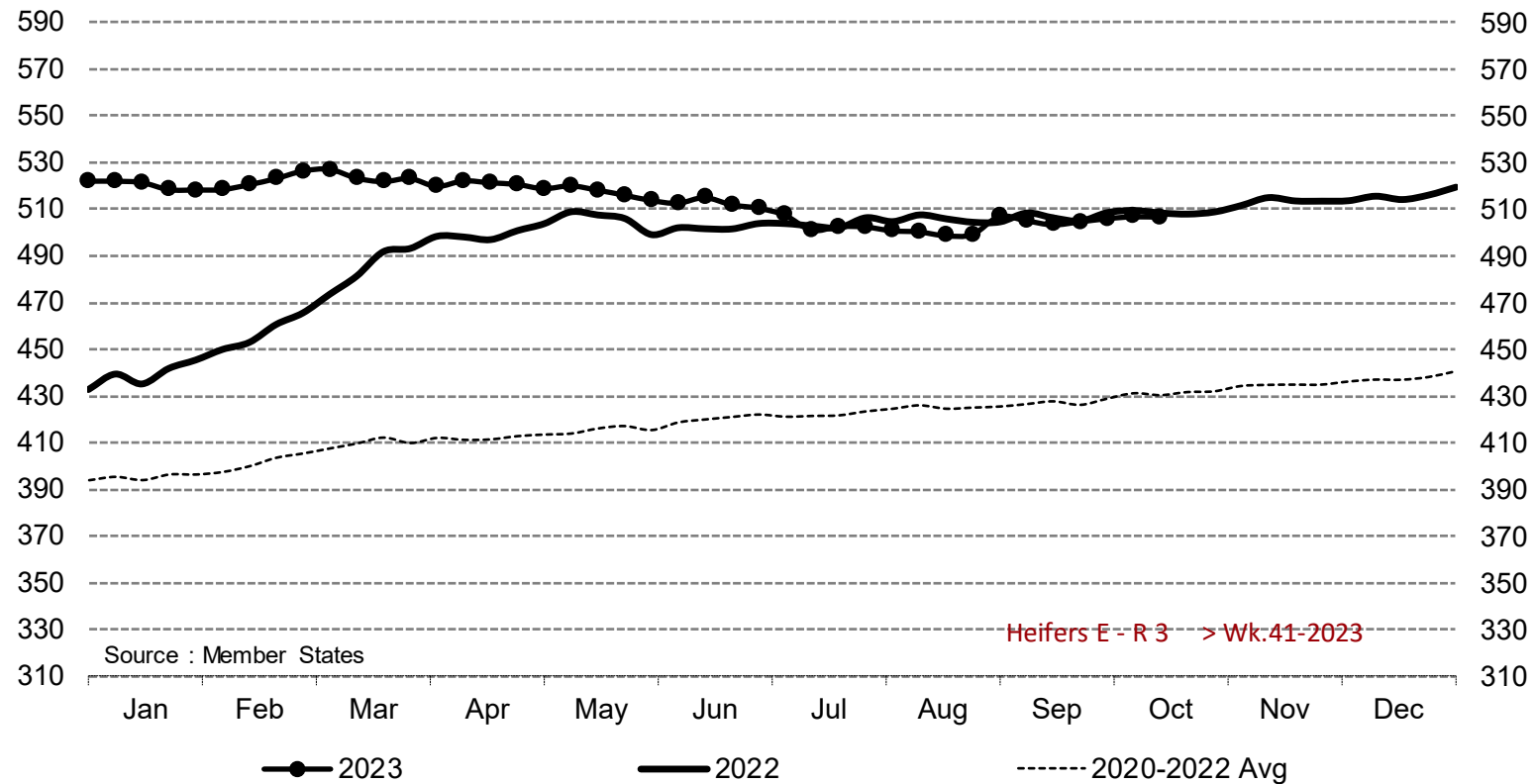
Price in week 41 : **401.44**  
% change y/y : **- 6.6%**

Average price in September 2023 : **410.98**  
% change y/y : **- 6.5%**

# PRICES CARCASSES

## EU EVOLUTION HEIFER - E.R3

Heifers E - R 3 > Wk.41-2023

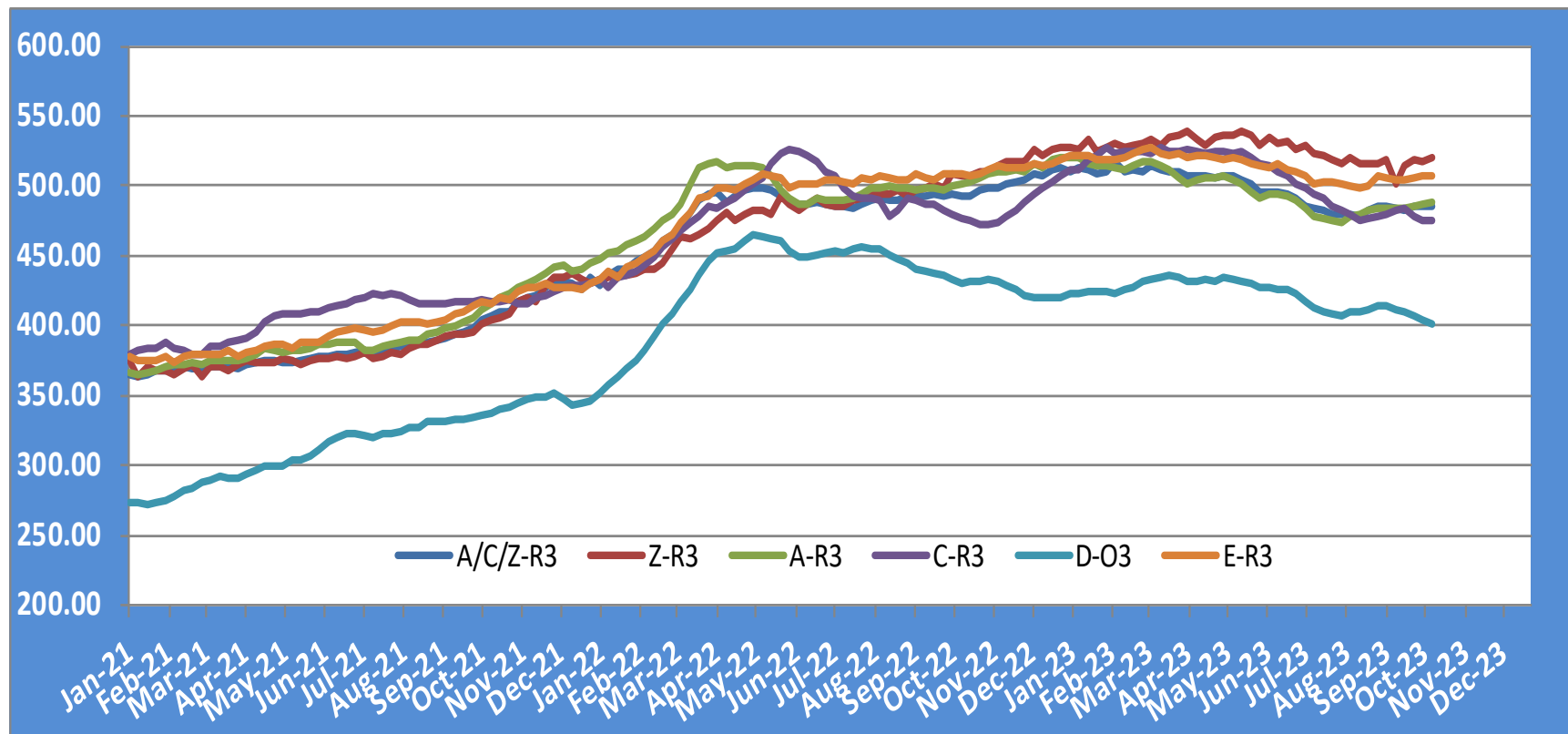


Price in week 41 : **506.75**  
% change y/y : **- 0.3%**

Average price in September 2023 : **505.14**  
% change y/y : **- 0.3%**

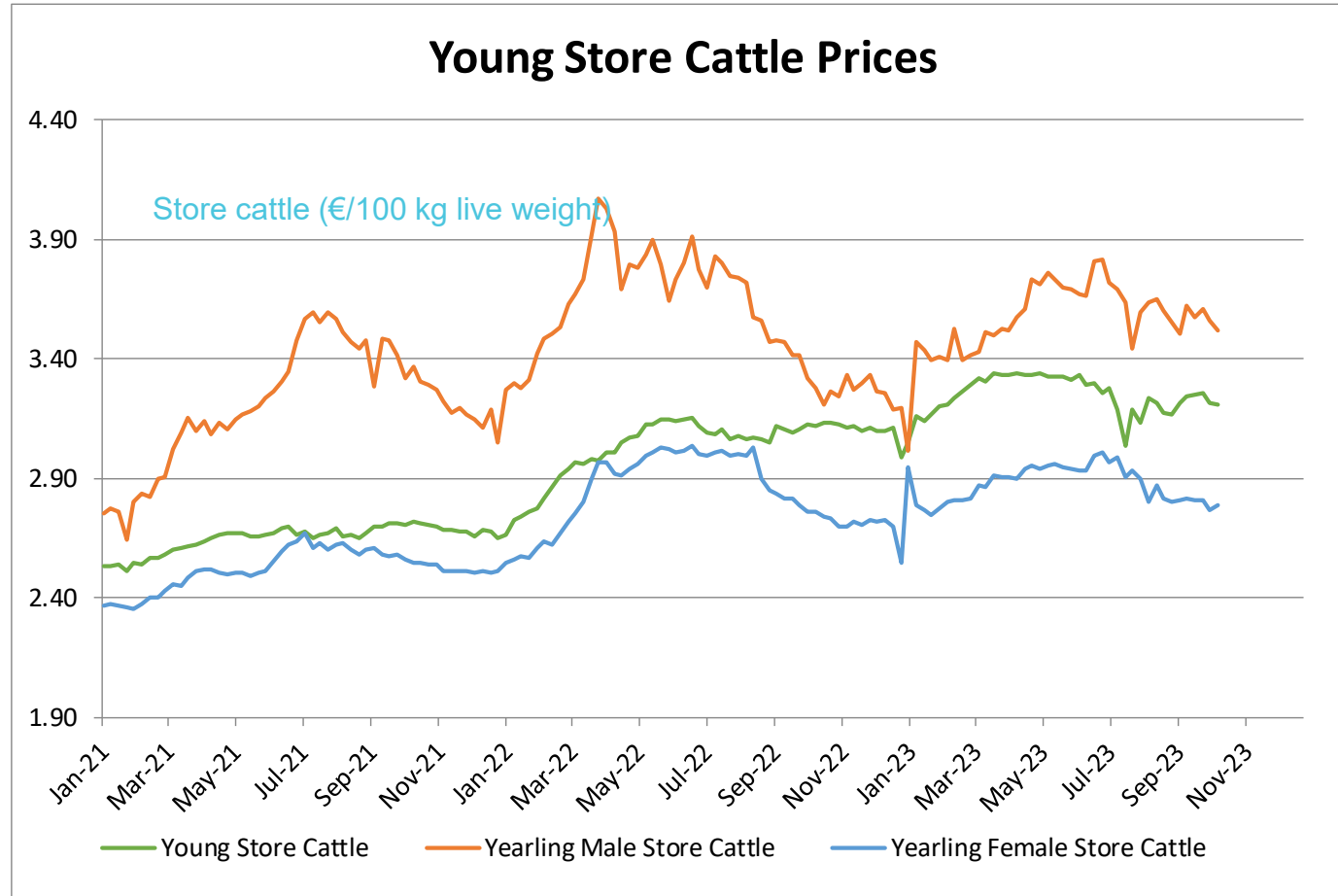
# PRICES CARCASSES

## EU EVOLUTION ALL CAT GLOBAL VIEW



# PRICES LIVE BOVINES

## EU EVOLUTION STORE CATTLE



<b>Young Store Cattle Price in</b>	<b>Week 41</b>	<b>3.21</b>	<b>Yearling Male Store Cattle Price</b>	<b>3.52</b>
	Change y/y	+2.9%	Change y/y	+7.3%
<b>Yearling Female Store Cattle Price</b>		<b>2.79</b>		
	Change y/y	+0.9%		

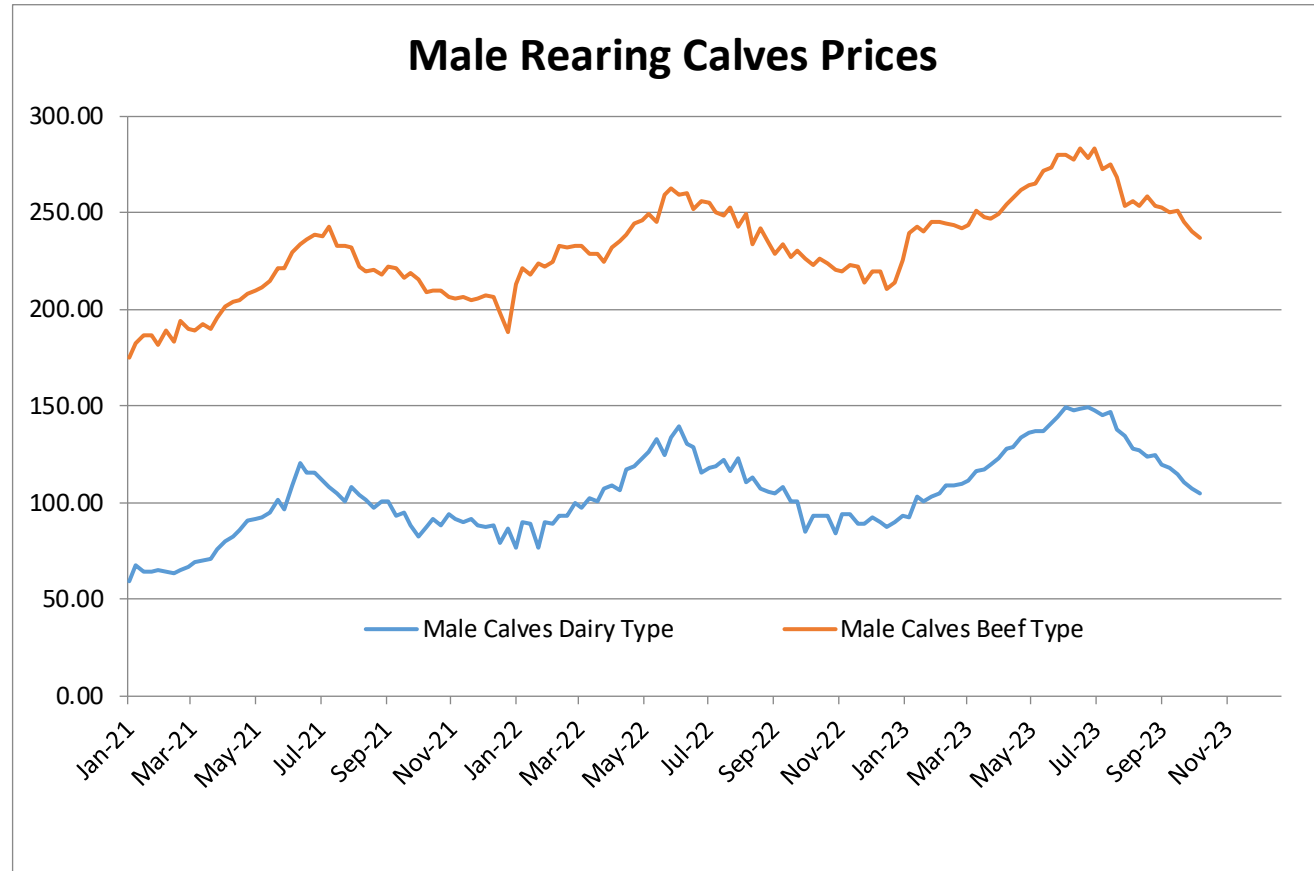
19 October 2023



# PRICES LIVE BOVINES

## EU EVOLUTION Male Calves – 8D4W

Male calves aged between 8 days and 4 weeks (€/head)



**Male Rearing Calves Beef type**

Price in Week 41 **237.06**  
Change y/y **+6.4%**

**Male Rearing Calves Dairy type**

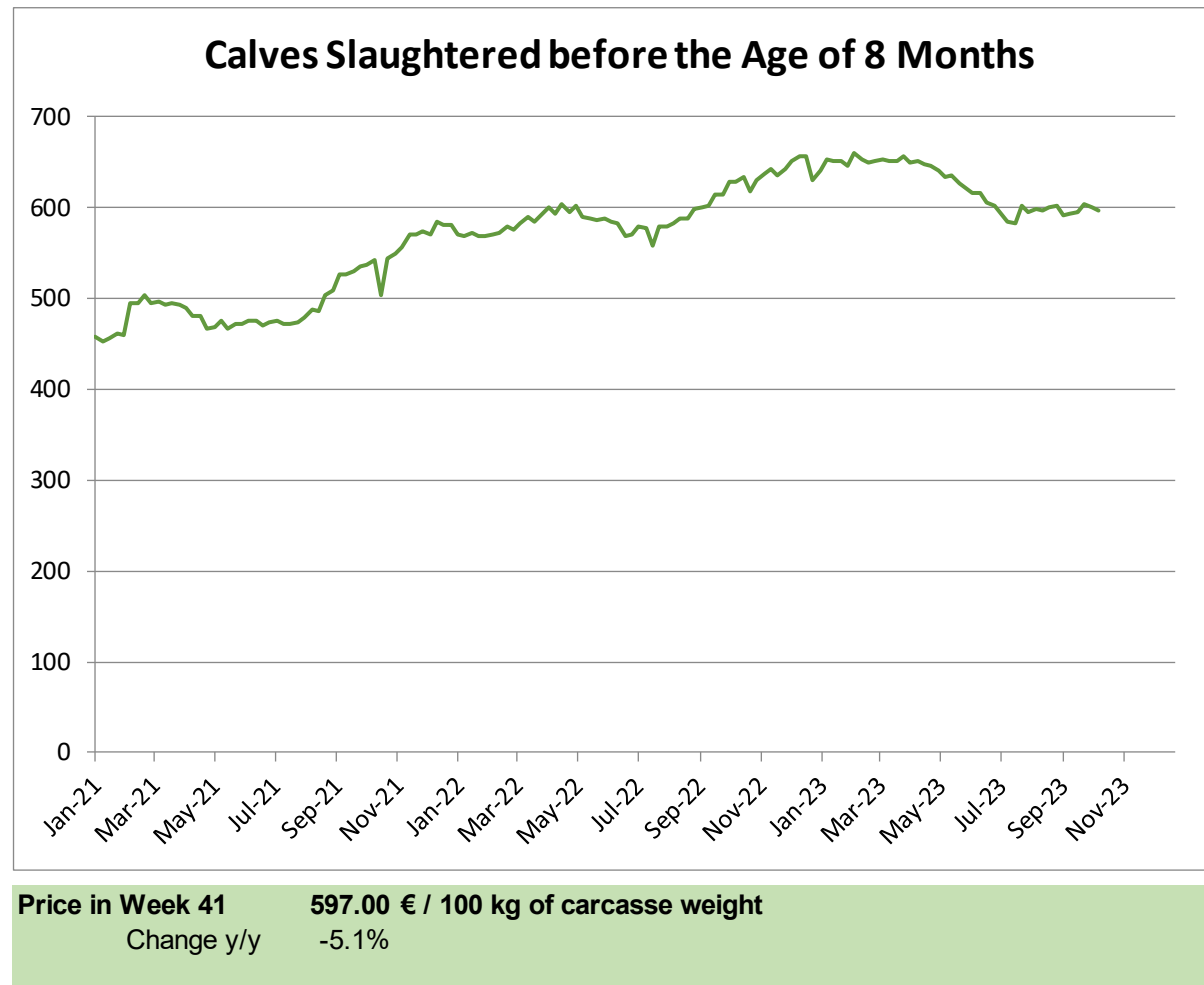
Price in Week 41 **105.02**  
Change y/y **+12.7%**

19 October 2023

# PRICES LIVE BOVINES

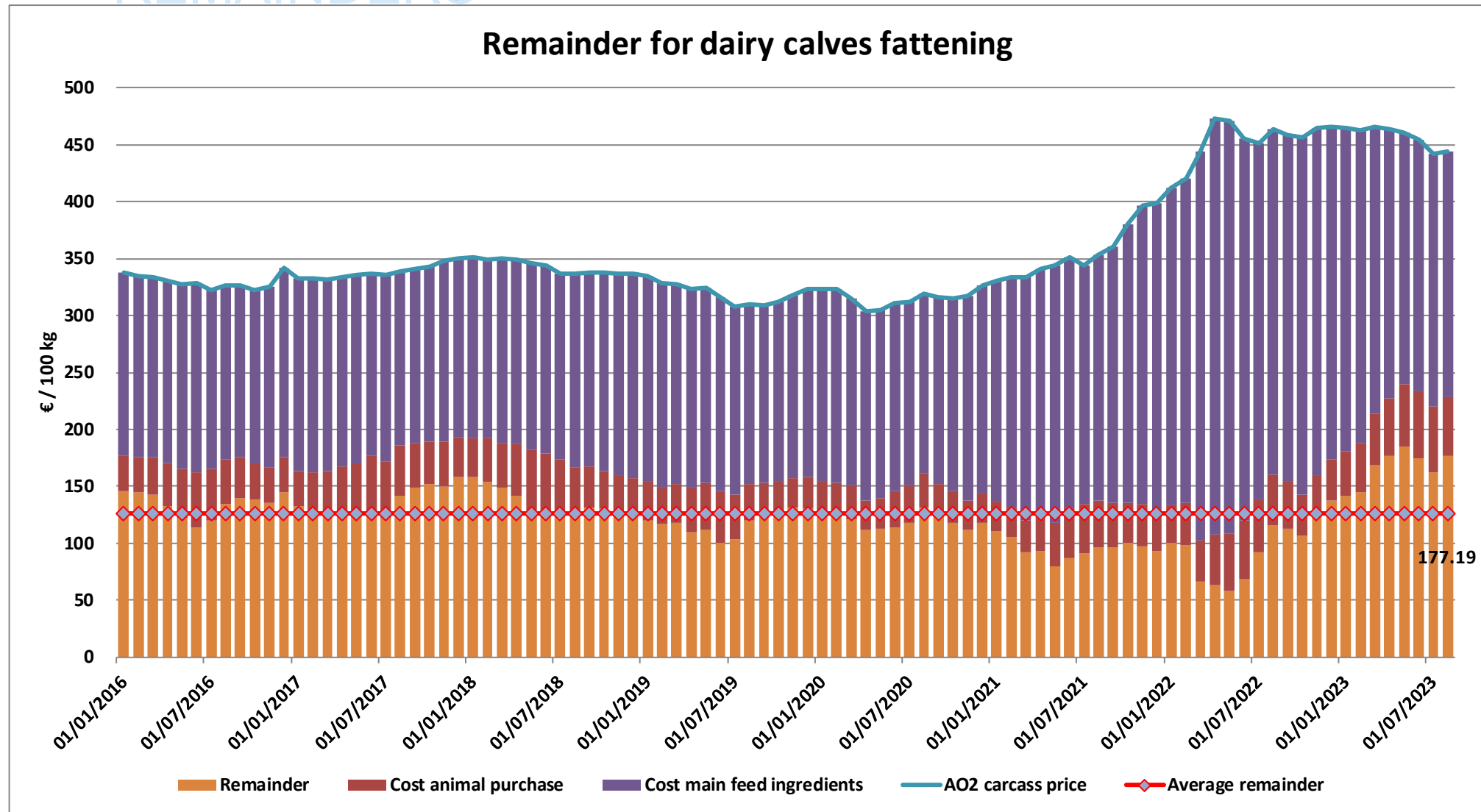
## EU EVOLUTION Butcher Calves

Calves slaughtered before the age of less than 8 months  
(€/100 kg cw)

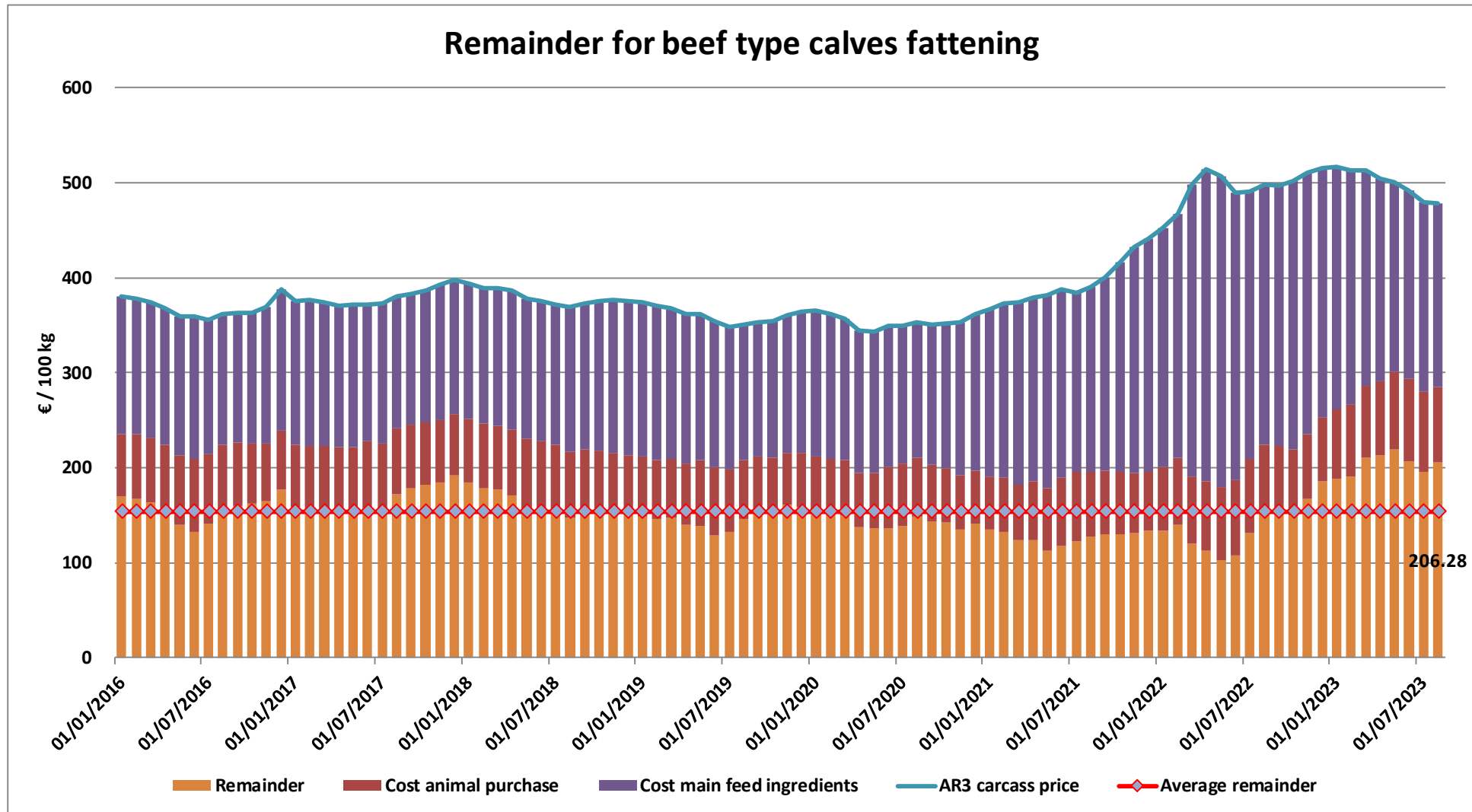


19 October 2023

# REMAINDERS

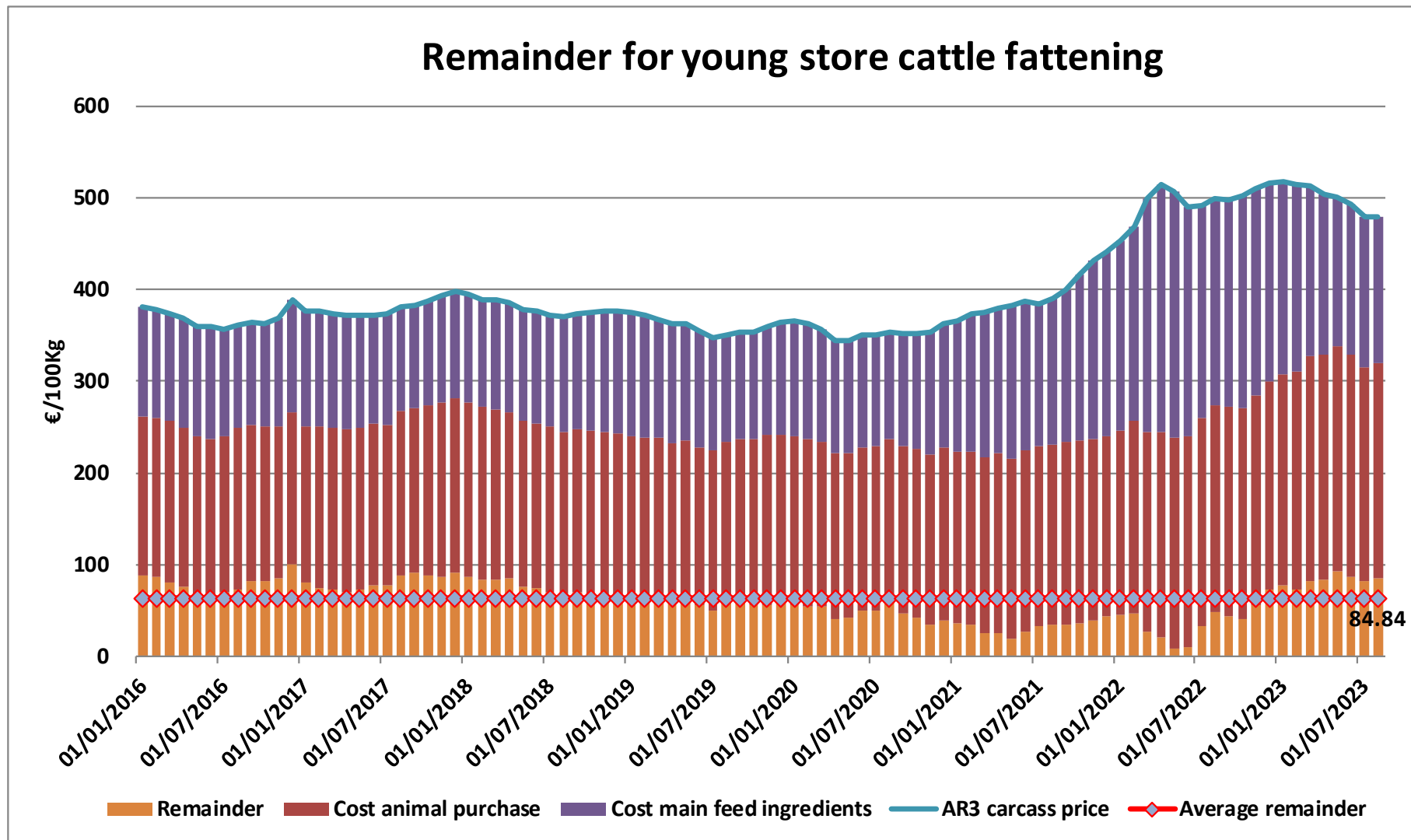


# REMAINDERS



206.28

# REMAINDERS



# TRADE

## EU EXPORTS

### Beef & Live Animals

#### EU Exports of Beef and Live Animals (excluding fats): Trade figures (COMEXT – tonnes cwe)

Destinations	2019		2020		2021		2022		Jan-Jul 23		Compared to
	tonnes	%	tonnes	%	tonnes	%	tonnes	%	tonnes	%	
United Kingdom	433 401	38.7%	450 442	39.5%	344 633	33.4%	360 533	38.5%	206 157	38.3%	+ 0.9%
Turkey	34 555	3.1%	22 338	2.0%	14 953	1.5%	13 422	1.4%	50 656	9.4%	+++
Israel	48 505	4.3%	56 139	4.9%	66 022	6.4%	63 598	6.8%	31 363	5.8%	- 15.7%
Bosnia-Herz.	40 013	3.6%	34 896	3.1%	40 504	3.9%	38 801	4.1%	23 679	4.4%	+ 14.4%
Ghana	39 196	3.5%	47 344	4.2%	47 618	4.6%	31 762	3.4%	19 516	3.6%	- 11.4%
Ivory Coast	33 396	3.0%	32 433	2.8%	29 187	2.8%	29 879	3.2%	16 653	3.1%	- 6.3%
Morocco	12 982	1.2%	10 049	0.9%	11 868	1.2%	8 273	0.9%	13 987	2.6%	+ 196.3%
Hong Kong	46 639	4.2%	56 713	5.0%	44 769	4.3%	10 494	1.1%	12 724	2.4%	+ 90.3%
Switzerland	21 398	1.9%	26 223	2.3%	28 717	2.8%	25 000	2.7%	11 523	2.1%	- 24.0%
Kosovo	9 896	0.9%	10 391	0.9%	16 478	1.6%	17 070	1.8%	11 069	2.1%	+ 25.2%
Lebanon	36 221	3.2%	33 709	3.0%	19 527	1.9%	21 042	2.2%	10 298	1.9%	- 30.0%
Philippines	31 302	2.8%	33 650	3.0%	34 671	3.4%	29 703	3.2%	9 299	1.7%	- 48.5%
Algeria	57 152	5.1%	39 396	3.5%	24 111	2.3%	25 459	2.7%	8 047	1.5%	- 30.5%
Canada	6 756	0.6%	20 450	1.8%	20 670	2.0%	19 795	2.1%	7 909	1.5%	- 30.9%
Japan	7 982	0.7%	11 885	1.0%	21 888	2.1%	19 935	2.1%	7 213	1.3%	- 44.0%
Libya	12 885	1.2%	22 352	2.0%	19 784	1.9%	10 670	1.1%	5 909	1.1%	- 3.6%
Other Destinations	247 797	22.1%	230 968	20.3%	245 578	23.8%	211 517	22.6%	91 653	17.0%	
<b>Total</b>	<b>1 120 078</b>		<b>1 139 378</b>		<b>1 030 978</b>		<b>936 953</b>		<b>537 653</b>		
% change			+ 2%		- 10%		- 9%		- 1.0%		

# TRADE

# EU EXPORTS

## Beef

### EU Exports of Beef (excluding fats): Trade figures (COMEXT – tonnes cwe)

Destinations	2019		2020		2021		2022		Jan-Jul 23		Compared to
	tonnes	%	tonnes	%	tonnes	%	tonnes	%	tonnes	%	
United Kingdom	422 733	47.8%	429 367	47.5%	329 539	40.5%	347 164	47.0%	198 854	48.2%	+ 1.0%
Bosnia-Herz.	37 700	4.3%	32 596	3.6%	37 581	4.6%	35 522	4.8%	21 654	5.3%	+ 14.4%
Turkey	1 326	0.1%	349	0.0%	608	0.1%	641	0.1%	19 520	4.7%	+++
Ghana	39 196	4.4%	47 344	5.2%	47 618	5.9%	31 762	4.3%	19 516	4.7%	- 11.4%
Ivory Coast	33 396	3.8%	32 433	3.6%	29 187	3.6%	29 879	4.0%	16 653	4.0%	- 6.3%
Hong Kong	46 639	5.3%	56 713	6.3%	44 769	5.5%	10 494	1.4%	12 724	3.1%	+ 90.3%
Israel	21 902	2.5%	21 131	2.3%	20 548	2.5%	20 876	2.8%	11 083	2.7%	- 13.9%
Switzerland	20 320	2.3%	25 170	2.8%	27 394	3.4%	23 776	3.2%	10 907	2.6%	- 23.9%
Philippines	31 302	3.5%	33 650	3.7%	34 671	4.3%	29 703	4.0%	9 299	2.3%	- 48.5%
Canada	6 756	0.8%	20 450	2.3%	20 670	2.5%	19 795	2.7%	7 909	1.9%	- 30.9%
Japan	7 982	0.9%	11 885	1.3%	21 888	2.7%	19 935	2.7%	7 213	1.7%	- 44.0%
Ukraine	12 684	1.4%	13 992	1.5%	13 681	1.7%	11 525	1.6%	5 546	1.3%	- 23.8%
North Macedonia	10 744	1.2%	10 034	1.1%	12 777	1.6%	9 492	1.3%	5 428	1.3%	- 6.4%
USA	7 866	0.9%	12 308	1.4%	11 430	1.4%	9 585	1.3%	4 052	1.0%	- 34.7%
Angola	8 410	1.0%	9 324	1.0%	7 600	0.9%	8 057	1.1%	3 808	0.9%	+ 18.5%
<i>Other Destinations</i>	<i>170 278</i>	<i>19.3%</i>	<i>142 975</i>	<i>15.8%</i>	<i>148 943</i>	<i>18.3%</i>	<i>125 189</i>	<i>16.9%</i>	<i>54 707</i>	<i>13.3%</i>	
Extra-EU	884 483		904 349		813 435		738 712		412 351		
<b>Total (without UK)</b>	<b>884 483</b>		<b>904 349</b>		<b>813 435</b>		<b>738 712</b>		<b>412 351</b>		
% change			+ 2%		- 10%		- 9%		- 5.2%		

# TRADE

# EU EXPORTS

## Beef

### EU Exports of Beef Fats: Trade figures (COMEXT – tonnes cwe)

Destinations	2021		2022		Jan to Jul 2023		Compared to Jan to Jul 2022
	Tons	% Extra EU	Tons	% Extra EU	Tons	% Extra EU	
United Kingdom	10 518	32.4%	7 642	31.9%	3 200	30.9%	-35.3%
Switzerland	5 198	16.0%	5 072	21.2%	2 049	19.8%	-26.9%
Ukraine	1 506	4.6%	964	4.0%	1 749	16.9%	+++
Serbia	571	1.8%	1 177	4.9%	1 011	9.8%	+++
Philippines	10 542	32.5%	5 521	23.1%	888	8.6%	-77.4%
Bosnia-Herz.	947	2.9%	1 672	7.0%	508	4.9%	-24.4%
Israel	524	1.6%	634	2.7%	474	4.6%	+39.3%
North Macedonia	464	1.4%	496	2.1%	195	1.9%	-43.2%
Norway	21	0.1%	150	0.6%	100	1.0%	+43.1%
Hong Kong	283	0.9%	40	0.2%	64	0.6%	+58.5%
Kosovo	283	0.9%	125	0.5%	40	0.4%	-52.3%
Other Destinations	1 620	5.0%	428	1.8%	84	0.8%	-69.5%
Extra-EU	32 477		23 920		10 361		-26.8%
% Change				-26.4%			

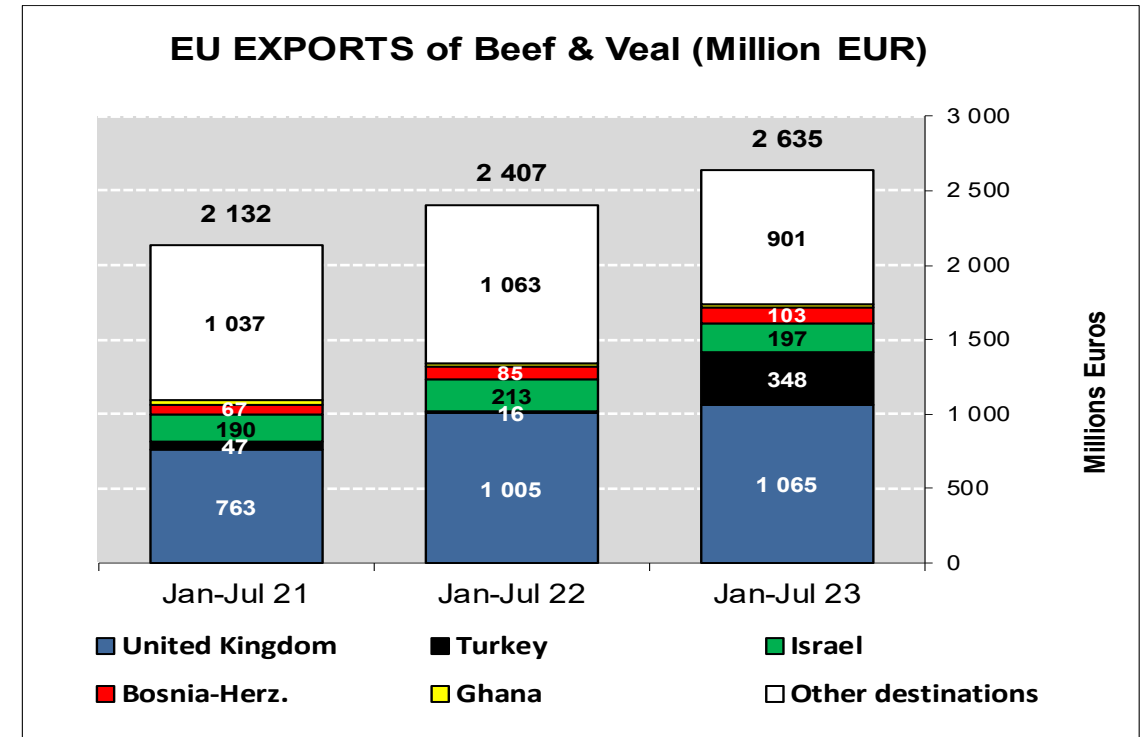
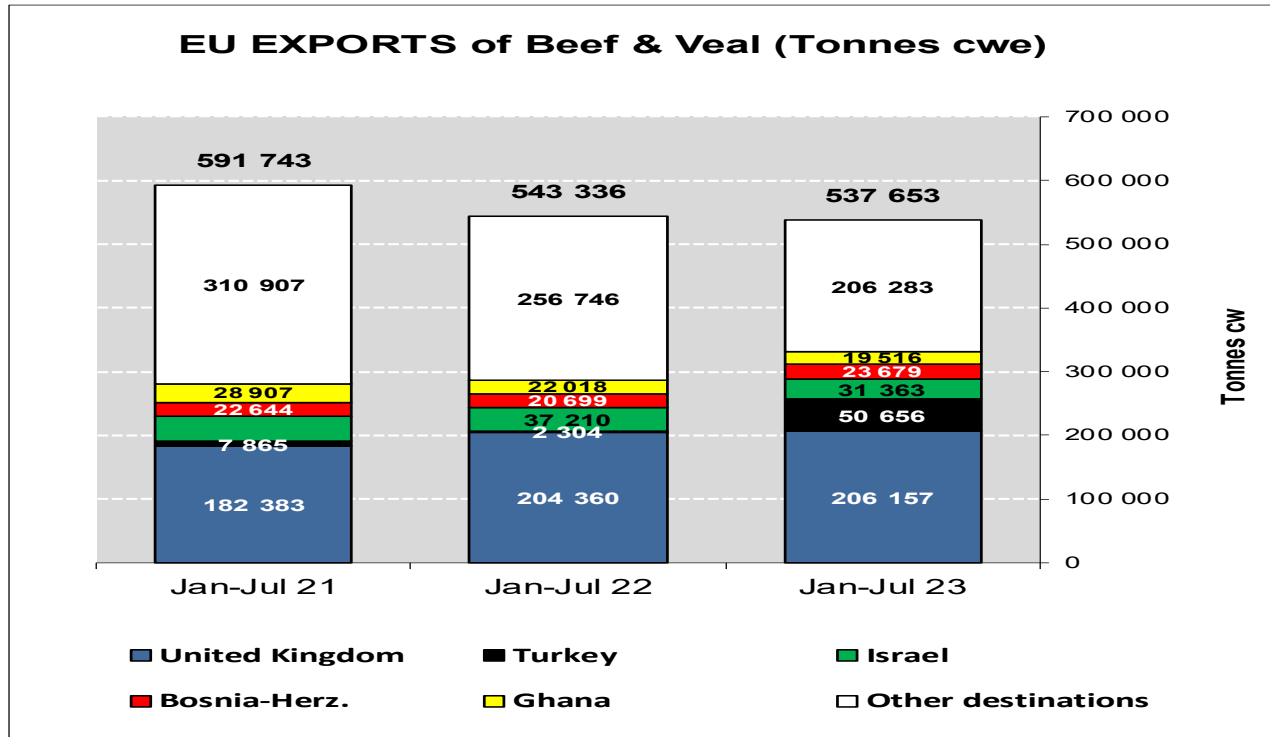


# TRADE

EU Exports of Beef and Live Animals:  
(Excl Fats) Trade figures (COMEXT)

# EU EXPORTS

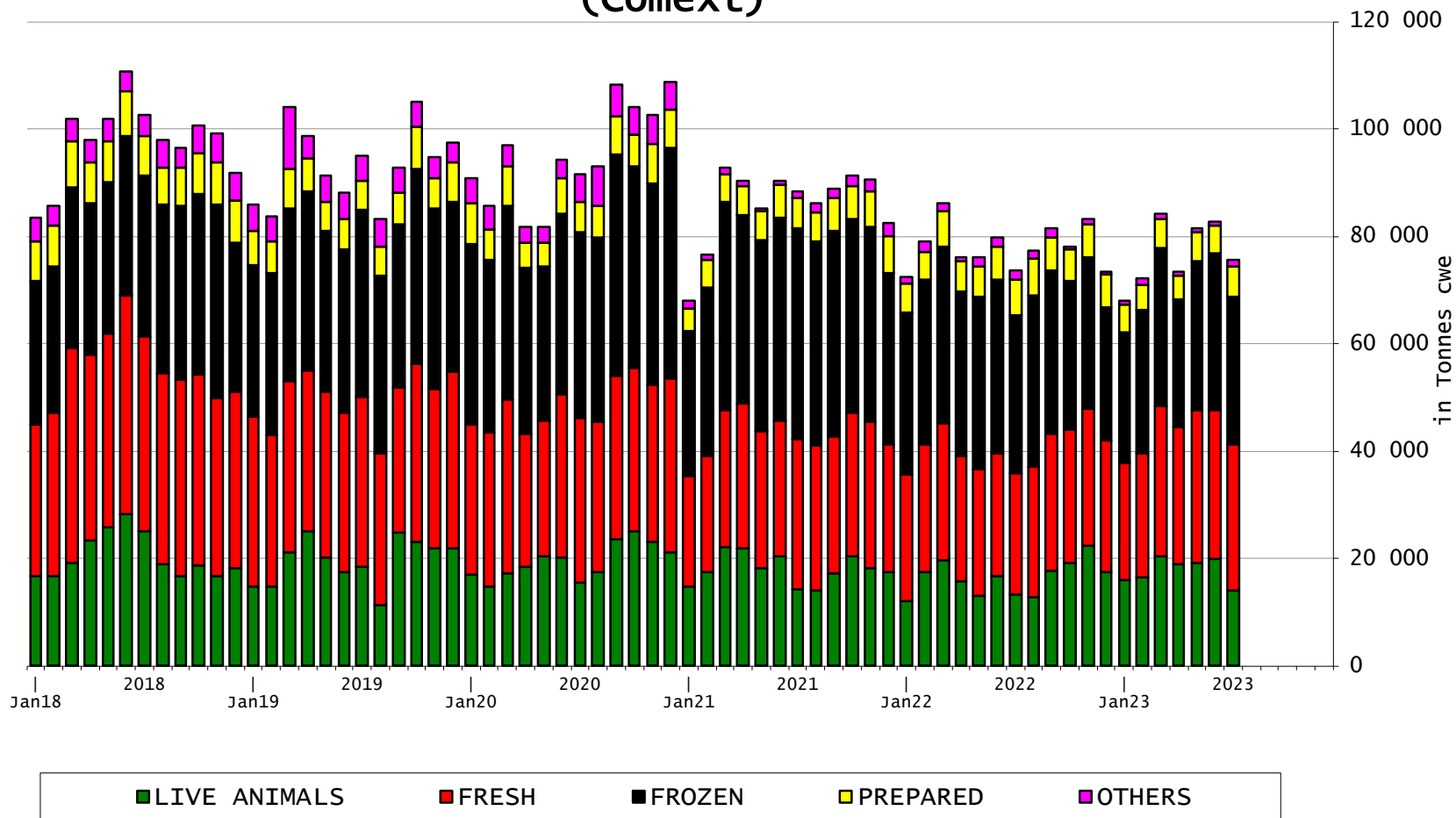
Beef & Live Animals (Excl Fats)



# TRADE

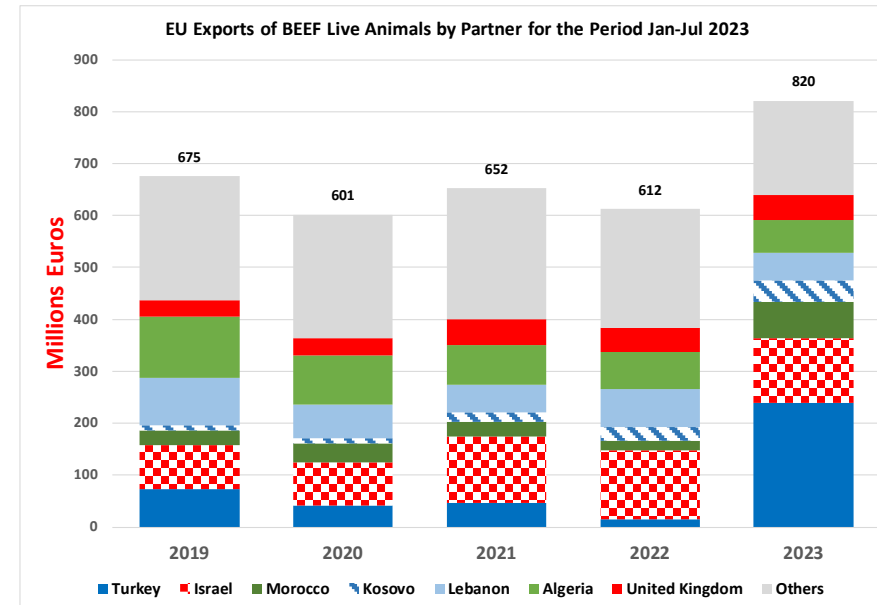
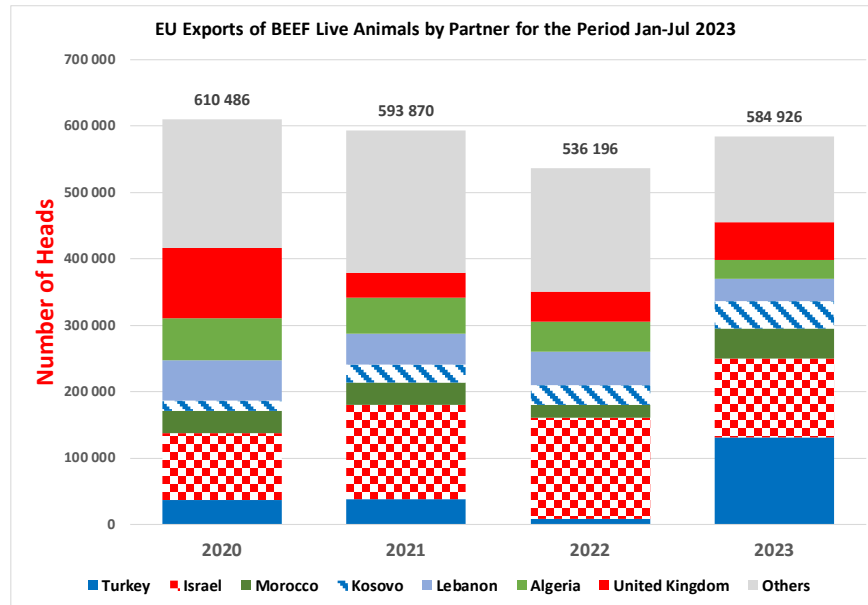
## EU EXPORTS Beef Products

### EU Exports of BEEF products (Comext)



# TRADE

# EU EXPORTS Live Animals



# TRADE

## EU IMPORTS Beef & Live Animals

### EU Imports of Beef and Live Animals (Excl Fats): Trade Figures (COMEXT – tonnes cwe)

Origins	2019		2020		2021		2022		Jan-Jul 23		Compared to
	tonnes	%	tonnes	%	tonnes	%	tonnes	%	tonnes	%	
United Kingdom	150 838	35.6%	120 733	35.1%	87 599	28.3%	142 454	37.0%	57 908	27.6%	- 25.6%
Brazil	99 569	23.5%	84 139	24.4%	81 737	26.4%	86 551	22.5%	57 280	27.3%	+ 13.0%
Argentina	65 324	15.4%	56 421	16.4%	52 300	16.9%	62 605	16.3%	37 643	17.9%	+ 6.8%
Uruguay	40 483	9.5%	34 611	10.0%	42 669	13.8%	37 669	9.8%	26 519	12.6%	+ 1.0%
USA	16 852	4.0%	16 532	4.8%	14 910	4.8%	17 269	4.5%	10 733	5.1%	+ 8.4%
Australia	16 432	3.9%	11 058	3.2%	8 925	2.9%	8 385	2.2%	4 818	2.3%	- 15.0%
Namibia	7 706	1.8%	1 445	0.4%	1 996	0.6%	5 168	1.3%	3 935	1.9%	+ 87.9%
Paraguay	5 203	1.2%	4 234	1.2%	3 933	1.3%	5 404	1.4%	3 364	1.6%	+ 17.1%
New Zealand	6 712	1.6%	6 116	1.8%	4 380	1.4%	5 527	1.4%	2 725	1.3%	- 14.7%
Switzerland	4 393	1.0%	4 187	1.2%	4 714	1.5%	4 730	1.2%	1 871	0.9%	- 12.2%
Canada	2 518	0.6%	1 550	0.5%	1 816	0.6%	2 176	0.6%	941	0.4%	- 11.0%
Botswana	4 950	1.2%	788	0.2%	331	0.1%	928	0.2%	602	0.3%	- 11.2%
Serbia	1 062	0.3%	931	0.3%	963	0.3%	1 058	0.3%	553	0.3%	- 18.1%
Japan	997	0.2%	789	0.2%	1 478	0.5%	3 114	0.8%	499	0.2%	- 78.4%
Norway	125	0.0%	335	0.1%	571	0.2%	705	0.2%	389	0.2%	- 0.2%
Chile	392	0.1%	168	0.0%	238	0.1%	404	0.1%	230	0.1%	- 12.7%
<i>Other Destinations</i>	483	0.1%	357	0.1%	710	0.2%	961	0.2%	99	0.0%	
<b>Total</b>	<b>424 040</b>		<b>344 393</b>		<b>309 270</b>		<b>385 109</b>		<b>210 109</b>		
% change			- 19%		- 10%		+ 25%		- 5.2%		

# TRADE

# EU IMPORTS

## Beef

### EU Imports of Beef (Excl Fats): Trade Figures (COMEXT – tonnes cwe)

Origins	2019		2020		2021		2022		Jan-Jul 23		Compared to
	tonnes	%	tonnes	%	tonnes	%	tonnes	%	tonnes	%	
United Kingdom	148 616	35.2%	118 528	34.6%	86 867	28.2%	141 865	36.9%	57 854	27.6%	- 25.3%
Brazil	99 569	23.6%	84 139	24.6%	81 737	26.5%	86 551	22.5%	57 280	27.3%	+ 13.0%
Argentina	65 324	15.5%	56 421	16.5%	52 300	17.0%	62 605	16.3%	37 643	17.9%	+ 6.8%
Uruguay	40 483	9.6%	34 611	10.1%	42 669	13.8%	37 669	9.8%	26 519	12.6%	+ 1.0%
USA	16 852	4.0%	16 532	4.8%	14 910	4.8%	17 269	4.5%	10 733	5.1%	+ 8.4%
Australia	16 432	3.9%	11 058	3.2%	8 925	2.9%	8 385	2.2%	4 818	2.3%	- 15.0%
Namibia	7 706	1.8%	1 445	0.4%	1 996	0.6%	5 168	1.3%	3 935	1.9%	+ 87.9%
Paraguay	5 203	1.2%	4 234	1.2%	3 933	1.3%	5 404	1.4%	3 364	1.6%	+ 17.1%
New Zealand	6 712	1.6%	6 116	1.8%	4 380	1.4%	5 527	1.4%	2 725	1.3%	- 14.7%
Switzerland	4 353	1.0%	4 153	1.2%	4 680	1.5%	4 641	1.2%	1 851	0.9%	- 11.6%
Canada	2 518	0.6%	1 550	0.5%	1 816	0.6%	2 175	0.6%	939	0.4%	- 11.2%
Botswana	4 950	1.2%	788	0.2%	331	0.1%	928	0.2%	602	0.3%	- 11.2%
Serbia	1 052	0.2%	931	0.3%	934	0.3%	1 047	0.3%	532	0.3%	- 19.9%
Japan	997	0.2%	789	0.2%	1 478	0.5%	3 114	0.8%	499	0.2%	- 78.4%
Norway	125	0.0%	335	0.1%	565	0.2%	705	0.2%	389	0.2%	- 0.2%
Chile	392	0.1%	168	0.0%	238	0.1%	404	0.1%	230	0.1%	- 12.7%
<i>Other Destinations</i>	404	0.1%	317	0.1%	659	0.2%	701	0.2%	79	0.0%	
<b>Total to Third Countries</b>	<b>421 689</b>		<b>342 114</b>		<b>308 419</b>		<b>384 157</b>		<b>209 992</b>		
% change			- 19%		- 10%		+ 25%		- 5.1%		

### EU Imports of Beef Fats): Trade Figures (COMEXT – tonnes cwe)

*In Tons of Carcase Weight*

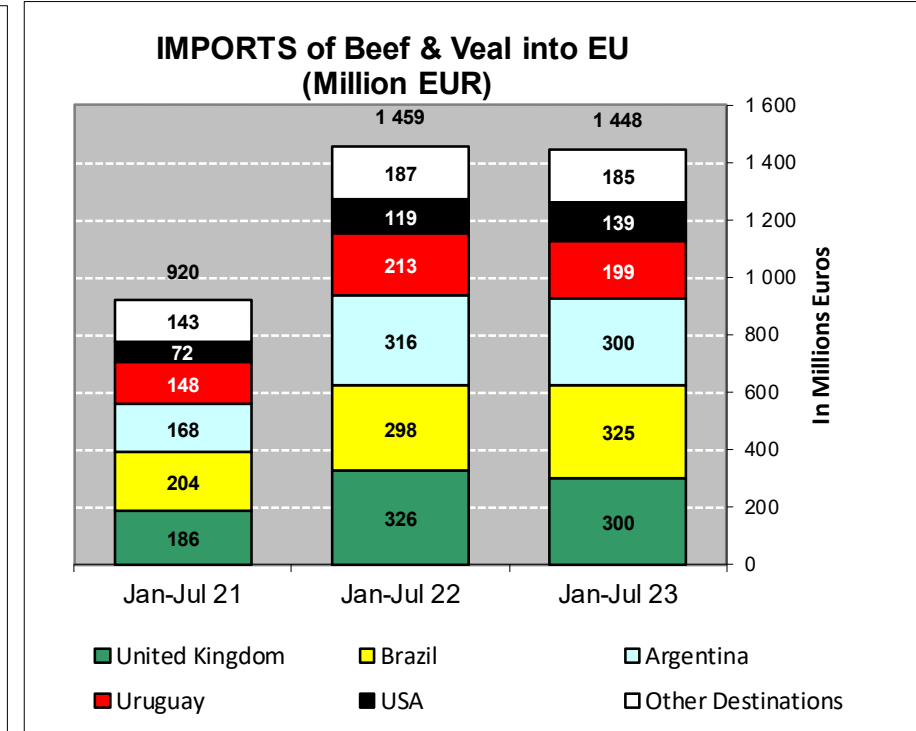
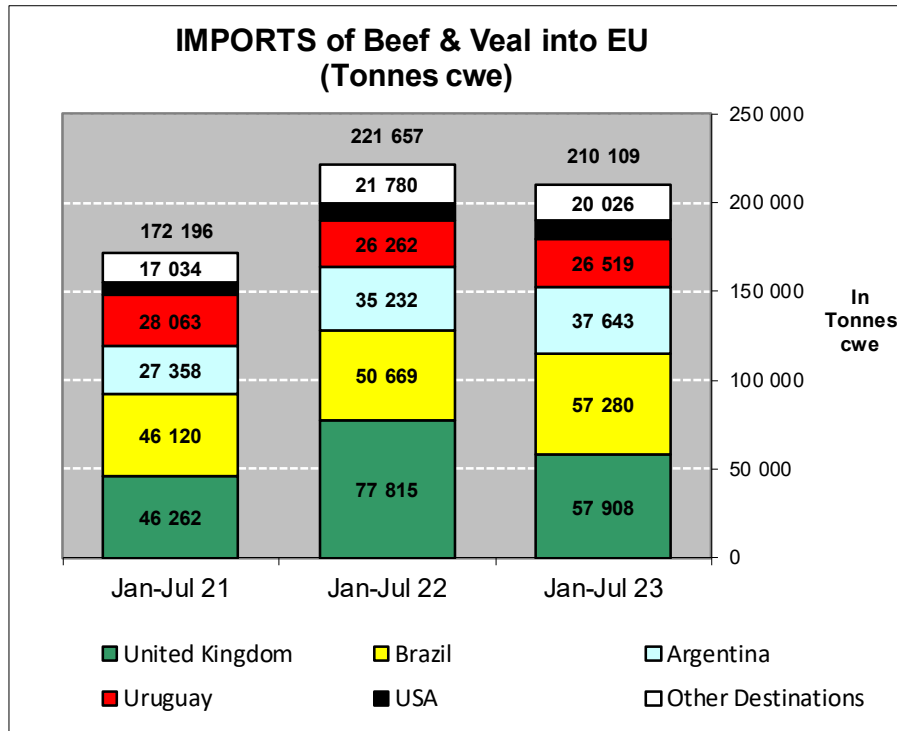
Origins	2021		2022		Jan to Jul 2023		Compared to Jan to Jul 2022
	Tons	% Extra EU	Tons	% Extra EU	Tons	% Extra EU	
United Kingdom	11 505	21.6%	9 720	29.7%	5 009	89.6%	-19.3%
Switzerland	519	1.0%	612	1.9%	354	6.3%	-14.8%
Uruguay	17 065	32.0%	7 512	23.0%	216	3.9%	-97.1%
New Zealand	14	0.0%	14	0.0%	14	0.3%	+0.0%
Australia	12	0.0%	0	0.0%	0	0.0%	+++
India	-	0.0%	0	0.0%	0	0.0%	
Brazil	0	0.0%	0	0.0%	0	0.0%	-43.1%
USA	0	0.0%	0	0.0%	0	0.0%	+++
Norway	158	0.3%	-	0.0%	0	0.0%	
Other Destinations	23 991	45.0%	14 816	45.3%	0	0.0%	
Extra-EU	53 264		32 675		5 593		-80.6%
% Change				-38.7%			

# TRADE

EU Imports of Beef and Live Animals (Excl Fats):  
Trade Figures (COMEXT)

# EU IMPORTS

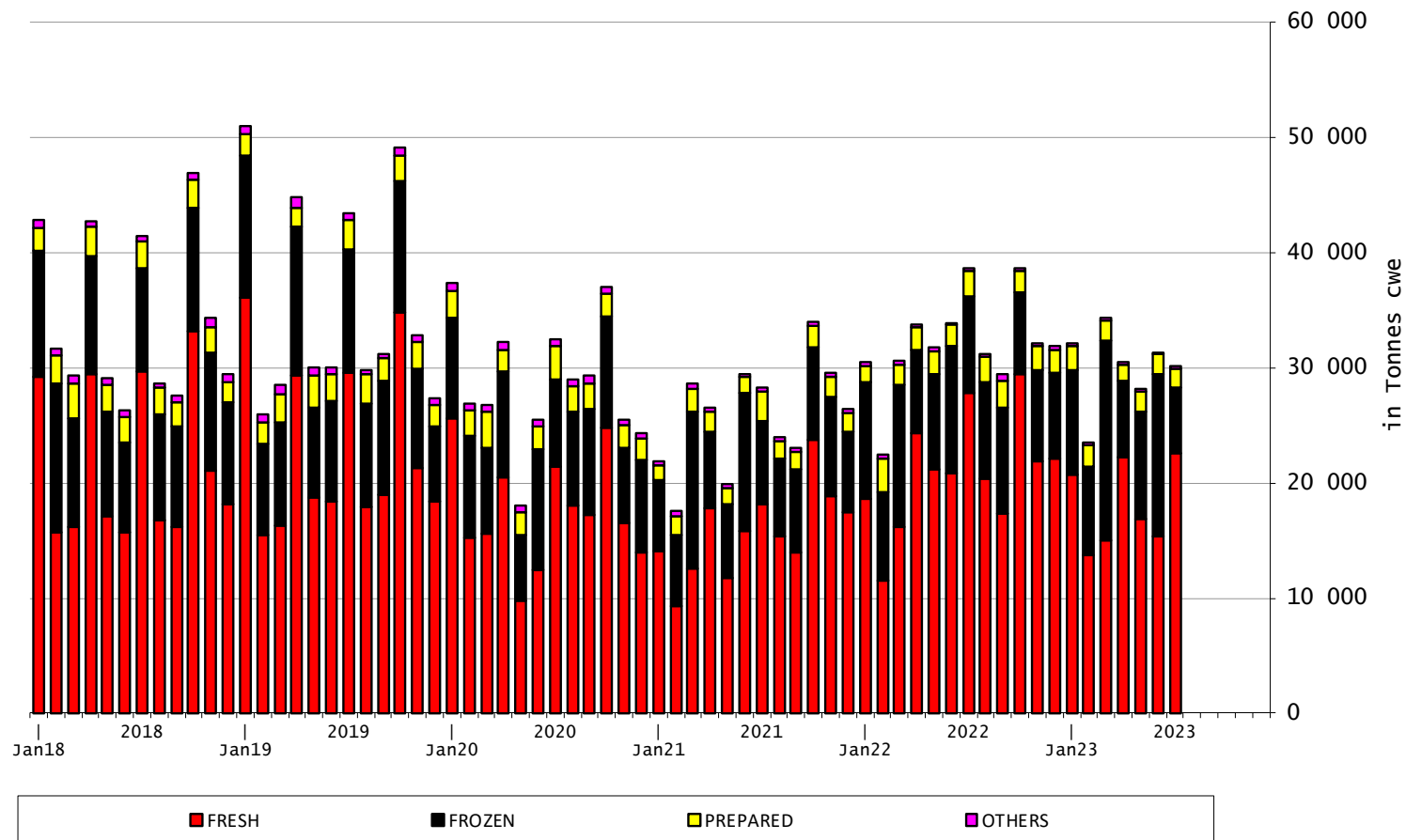
Beef & Live Animals (Excl Fats)



# TRADE

## EU IMPORTS Beef Products

### EU Imports of BEEF products



19 October 2023



# EU TRADE with UK

# EU EXPORTS Beef Products

## EU Export of BEEF (excluding fats) to UK by Products from Jan to Jul

*In Tons of Carcase Weight*

	2021			2022			2023			% 2023/2022	
	United Kingdom	Extra-EU	%	United Kingdom	Extra-EU	%	United Kingdom	Extra-EU	%	United Kingdom	Extra-EU
<b>Live Animals</b>	<b>8 981</b>	<b>129 841</b>	<b>6.9%</b>	<b>7 503</b>	<b>108 280</b>	<b>6.9%</b>	<b>7 303</b>	<b>125 303</b>	<b>5.8%</b>	<b>-2.7%</b>	<b>+15.7%</b>
<b>Meats</b>	<b>173 402</b>	<b>461 902</b>	<b>37.5%</b>	<b>196 857</b>	<b>435 056</b>	<b>45.2%</b>	<b>198 854</b>	<b>412 351</b>	<b>48.2%</b>	<b>+1.0%</b>	<b>-5.2%</b>
Fresh	102 699	168 854	60.8%	103 182	159 418	64.7%	108 927	175 864	61.9%	+5.6%	+10.3%
Frozen	38 809	144 507	26.9%	58 011	134 068	43.3%	56 511	109 258	51.7%	-2.6%	-18.5%
Salted Meat	395	1 225	32.3%	251	1 710	14.7%	273	1 860	14.7%	+8.6%	+8.8%
Prepared	21 376	36 827	58.0%	24 724	41 260	59.9%	22 907	35 468	64.6%	-7.3%	-14.0%
Fresh Offals	2 928	4 447	65.8%	4 265	5 939	71.8%	3 868	5 939	65.1%	-9.3%	-0.0%
Frozen Offals	6 862	99 882	6.9%	6 101	83 715	7.3%	6 105	79 103	7.7%	+0.1%	-5.5%
Salted Offals	152	5 876	2.6%	115	8 592	1.3%	109	4 612	2.4%	-5.4%	-46.3%
Prepared Offal	182	283	64.4%	208	353	59.0%	154	246	62.4%	-26.3%	-30.3%
<b>Total Beef</b>	<b>182 383</b>	<b>591 743</b>	<b>30.8%</b>	<b>204 360</b>	<b>543 336</b>	<b>37.6%</b>	<b>206 157</b>	<b>537 653</b>	<b>38.3%</b>	<b>+0.9%</b>	<b>-1.0%</b>

Source : Comext

19 October 2023

# EU TRADE with UK

# EU IMPORTS Beef Products

## EU Import of BEEF (excluding fats) from UK by Products from Jan to Jul

*In Tons of Carcase Weight*

	2021			2022			2023			% 2023/2022	
	United Kingdom	Extra-EU	%	United Kingdom	Extra-EU	%	United Kingdom	Extra-EU	%	United Kingdom	Extra-EU
<b>Live Animals</b>	<b>547</b>	<b>638</b>	<b>85.8%</b>	<b>397</b>	<b>449</b>	<b>88.3%</b>	<b>54</b>	<b>117</b>	<b>46.5%</b>	<b>-86.3%</b>	<b>-74.0%</b>
<b>Meats</b>	<b>45 715</b>	<b>171 558</b>	<b>26.6%</b>	<b>77 418</b>	<b>221 208</b>	<b>35.0%</b>	<b>57 854</b>	<b>209 992</b>	<b>27.6%</b>	<b>-25.3%</b>	<b>-5.1%</b>
Fresh	28 256	96 547	29.3%	55 236	137 417	40.2%	39 015	123 082	31.7%	-29.4%	-10.4%
Frozen	10 820	57 050	19.0%	12 597	62 634	20.1%	10 216	67 358	15.2%	-18.9%	+7.5%
Salted Meat	148	1 830	8.1%	163	1 537	10.6%	221	1 321	16.7%	+35.7%	-14.0%
Prepared	3 727	12 017	31.0%	5 323	14 008	38.0%	4 003	12 285	32.6%	-24.8%	-12.3%
Fresh Offals	2 186	2 905	75.2%	2 453	3 141	78.1%	2 659	3 388	78.5%	+8.4%	+7.8%
Frozen Offals	556	1 176	47.3%	1 618	2 405	67.3%	1 717	2 503	68.6%	+6.1%	+4.0%
Salted Offals	15	18	81.6%	19	24	77.0%	20	42	48.7%	+9.1%	+72.6%
Prepared Offal	7	14	47.4%	8	41	19.9%	3	13	21.0%	-66.4%	-68.2%
<b>Total Beef</b>	<b>46 262</b>	<b>172 196</b>	<b>26.9%</b>	<b>77 815</b>	<b>221 657</b>	<b>35.1%</b>	<b>57 908</b>	<b>210 109</b>	<b>27.6%</b>	<b>-25.6%</b>	<b>-5.2%</b>

Source : Estat - Comext

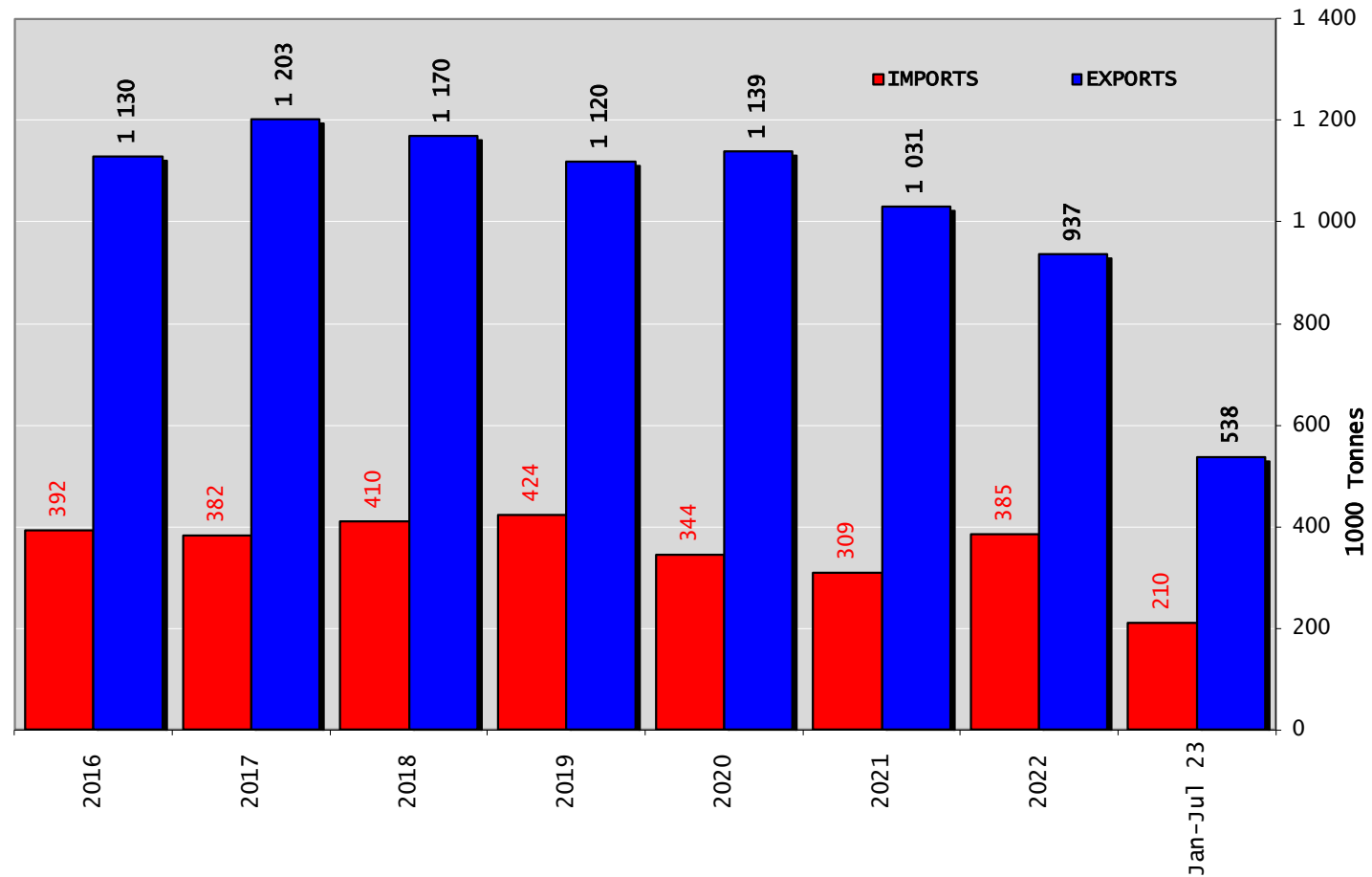
19 October 2023

# TRADE

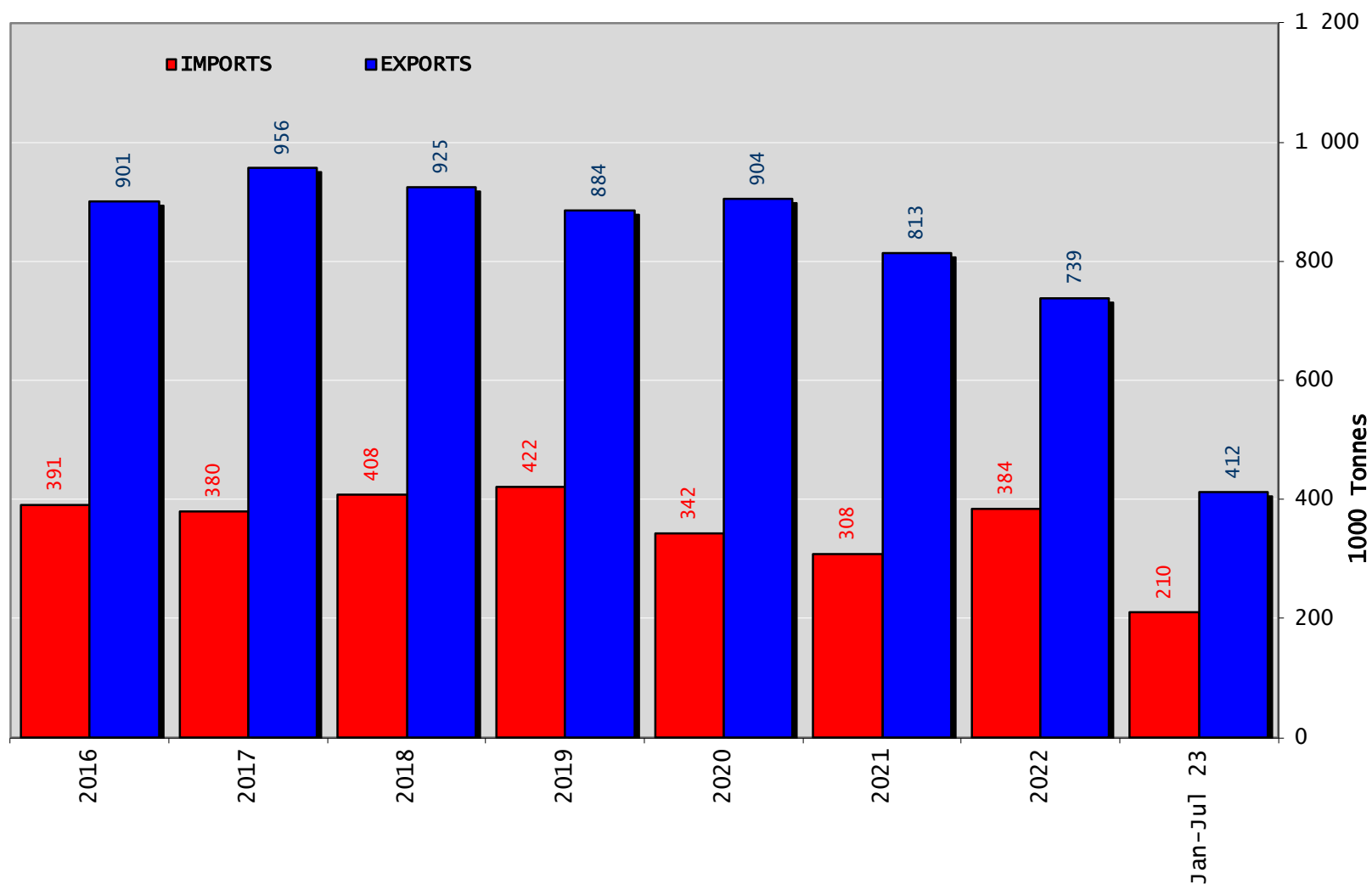
# EUTRADE BALANCE

## Beef & Live Animals

### Trade Balance of Beef Products and Live Animals



## Trade Balance of Beef Products (not including Fats) (Except Live Animals)

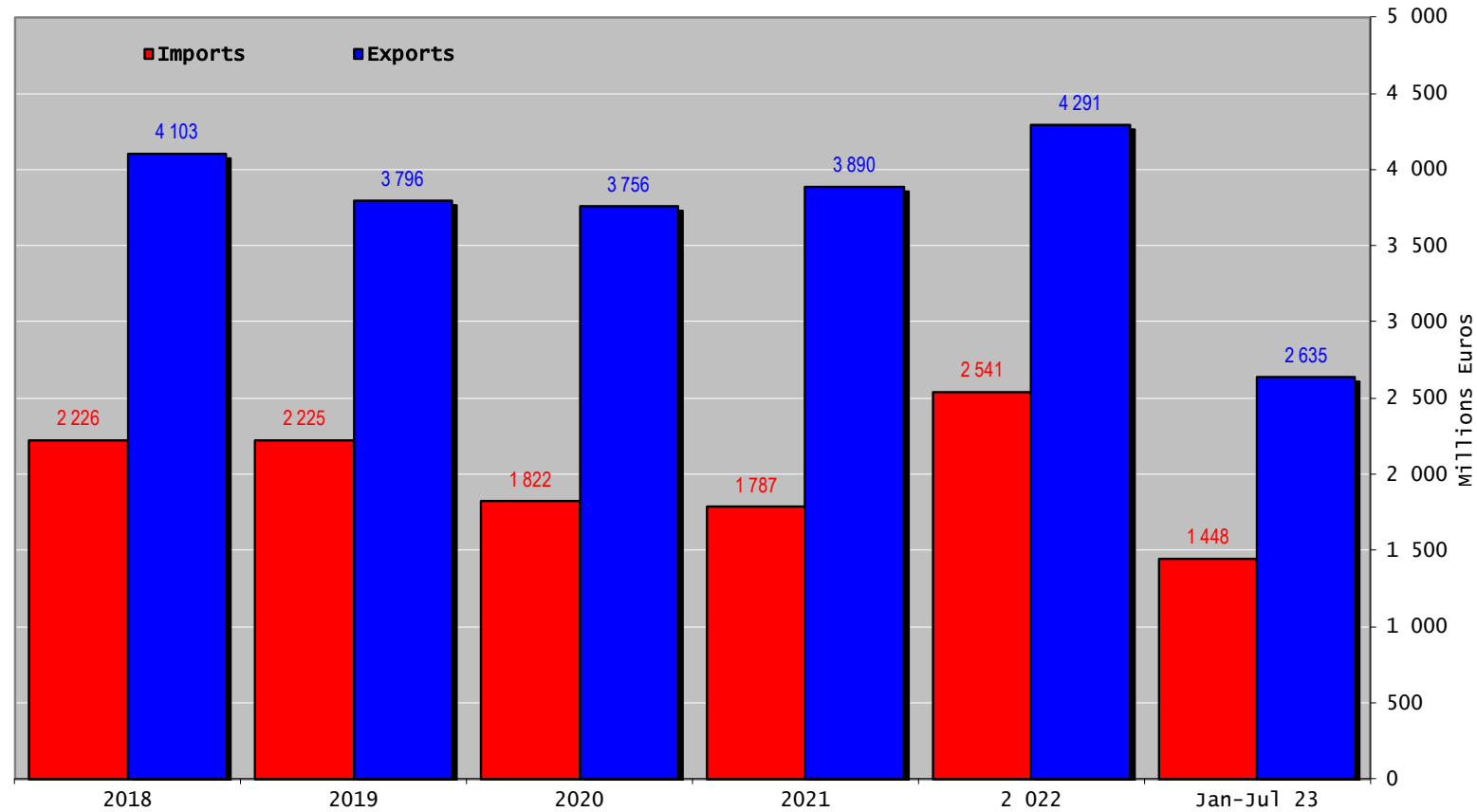


# TRADE

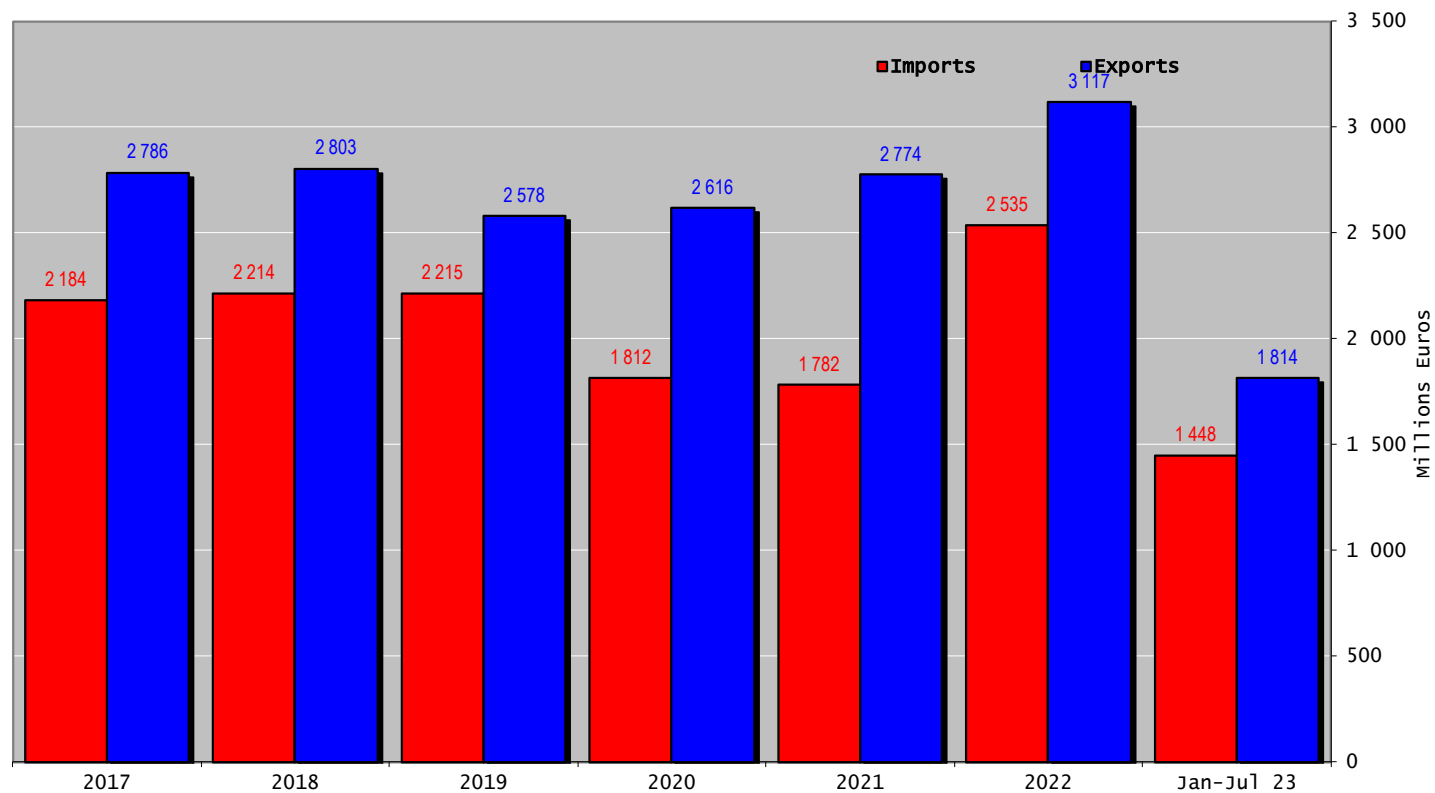
## EU TRADE BALANCE

### Beef & Live Animals

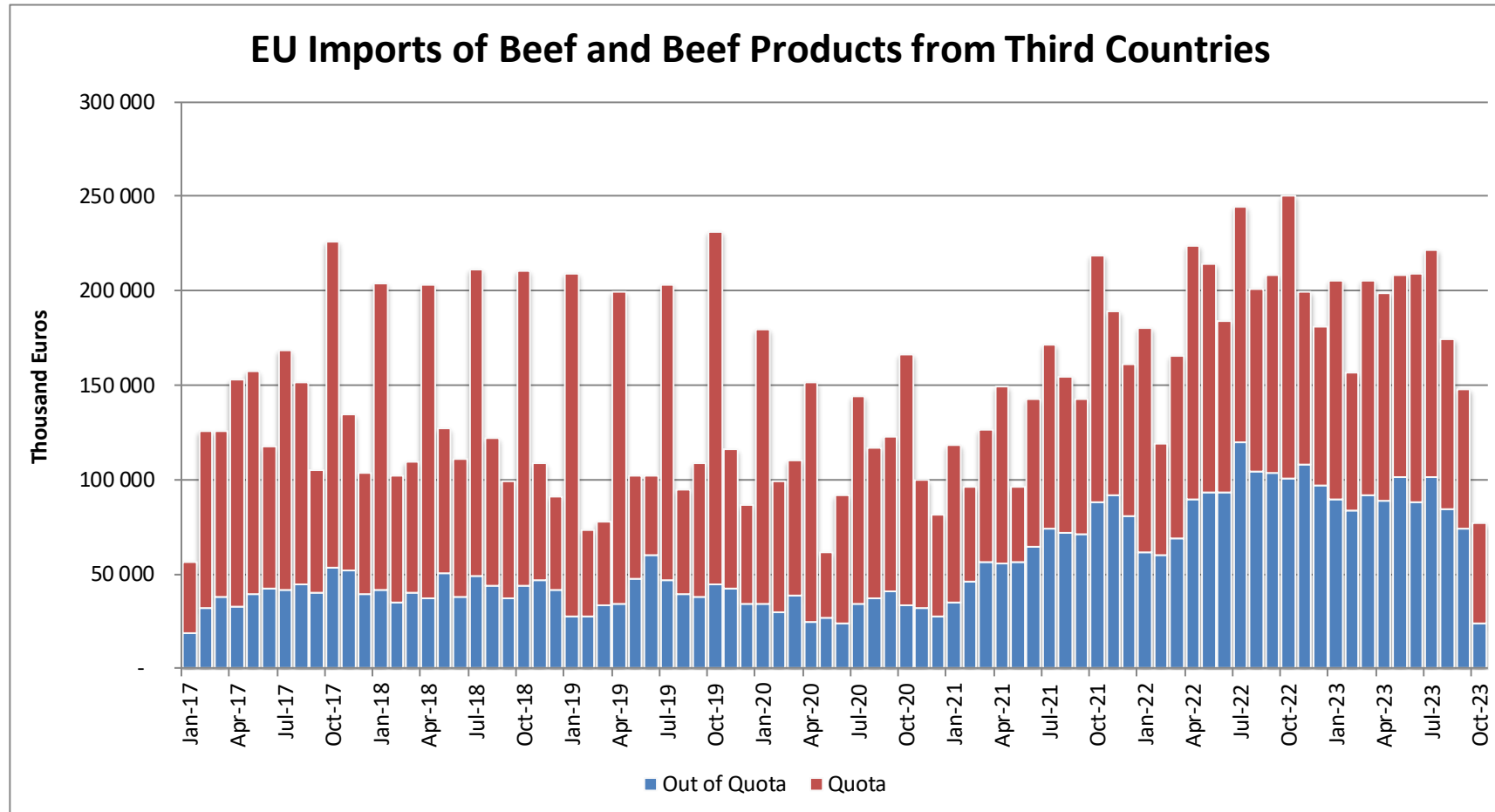
#### Trade Balance of Beef Products and Live Animals



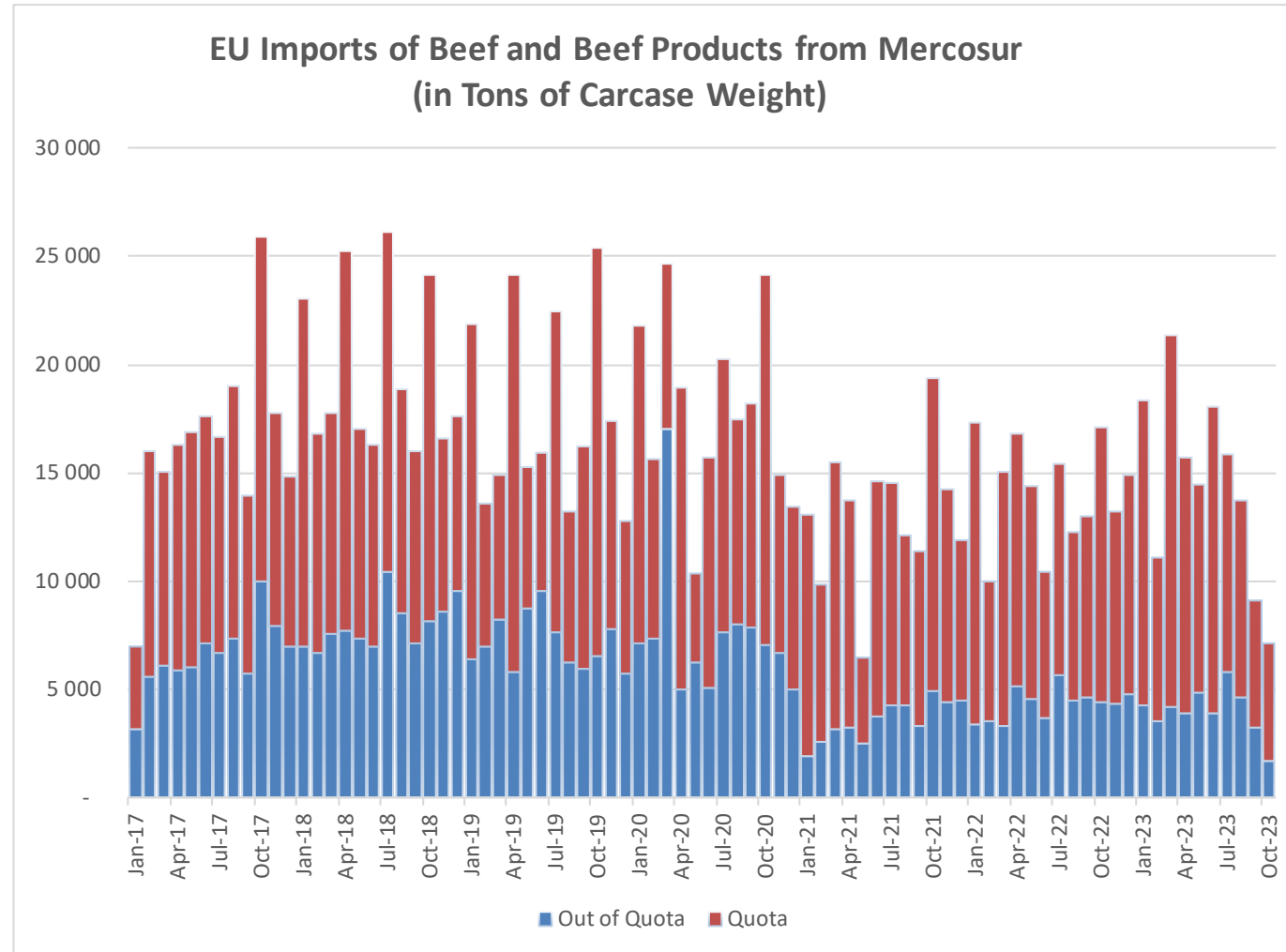
## Trade Balance of Beef Products (not including Fats) (Except Live Animals)



# Imports in and out of TRQs

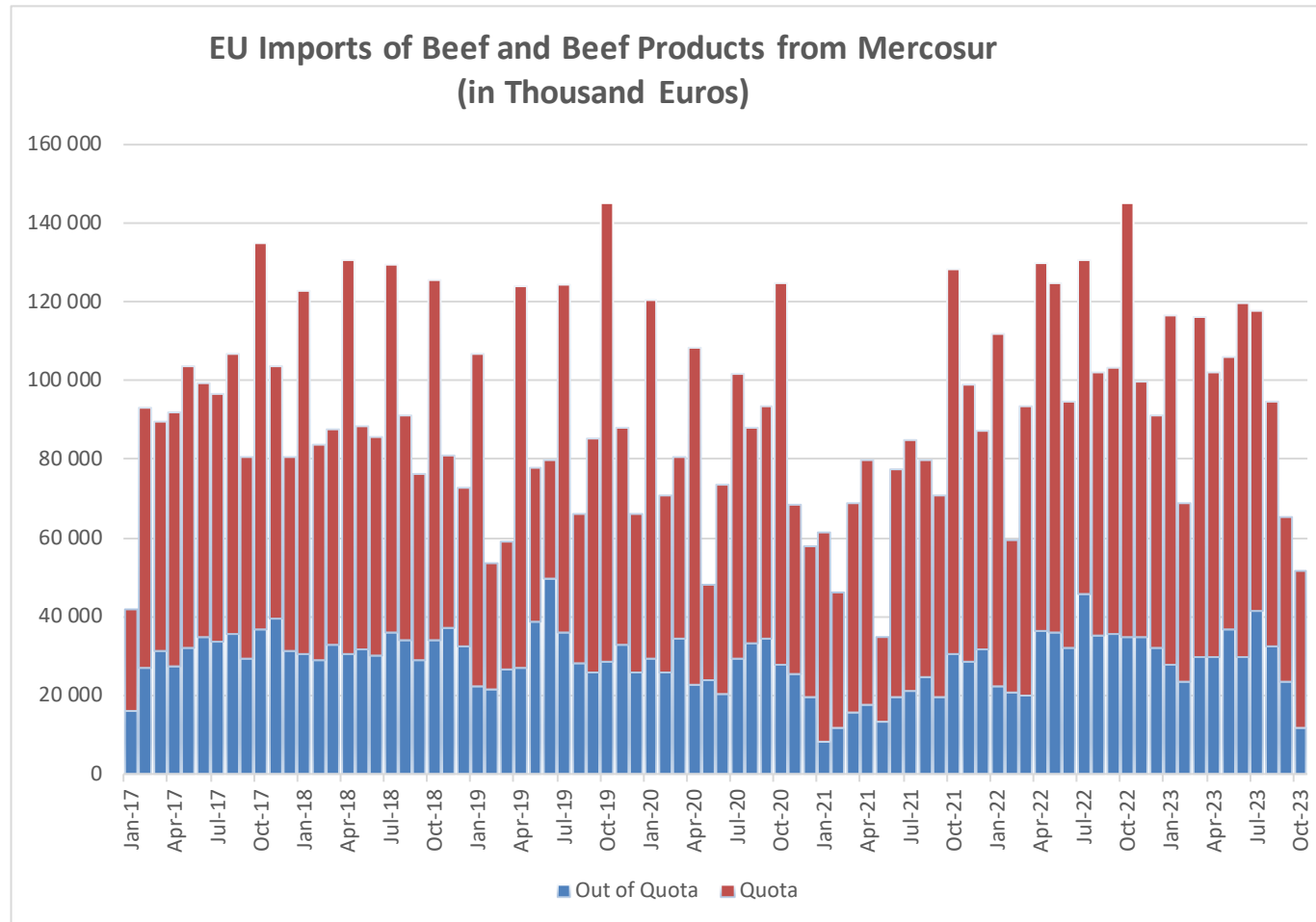


# Imports in and out of TRQs





# Imports in and out of TRQs



# High Quality Beef Import Quotas

Quota erga omnes

Regulation (EU) No 481/2012

	2021-Q3	2021-Q4	2022-Q1	2022-Q2	TOTAL
Period 2021-2022	5 502	5 587	4 938	4 956	20 983
Available	5 500	5 500	4 900	4 900	20 800
Use	100.00%	100.00%	100.00%	100.00%	100.88%
Available after transfer	5 500	5 498	4 813	4 862	
	100.00%	100.00%	100.00%	100.00%	

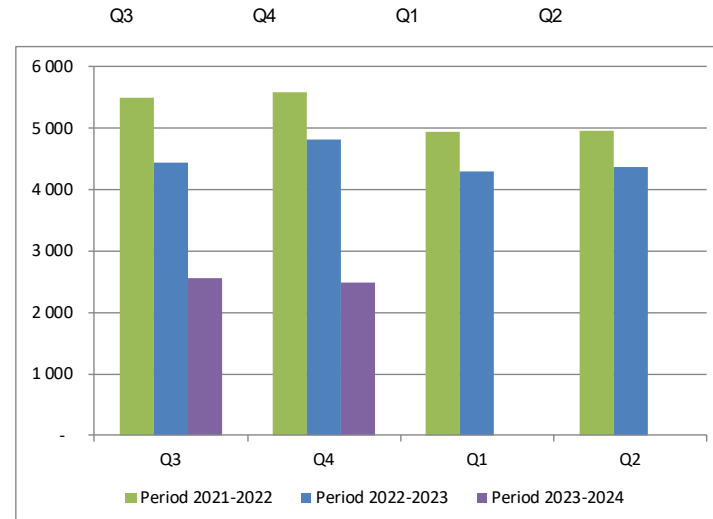
  

	2022-Q3	2022-Q4	2023-Q1	2023-Q2*	TOTAL
Period 2022-2023	4 436	4 811	4 302	4 372	17 922
Available	4 900	4 900	4 901	4 901	19 602
Use	90.53%	98.19%	87.78%	89.21%	91.43%
Available after transfer	4 900	4 900	4 901	4 901	
	90.53%	98.19%	87.78%	89.21%	

	2023-Q3	2023-Q4*	2024-Q1	2024-Q2	TOTAL
Period 2023-2024	2 553	2 480			5 032
Available	4 900	4 900			9 800
Use	52.10%	50.60%			51.35%
Available after transfer	4 900	4 900			
	52.10%	50.60%			

Origin

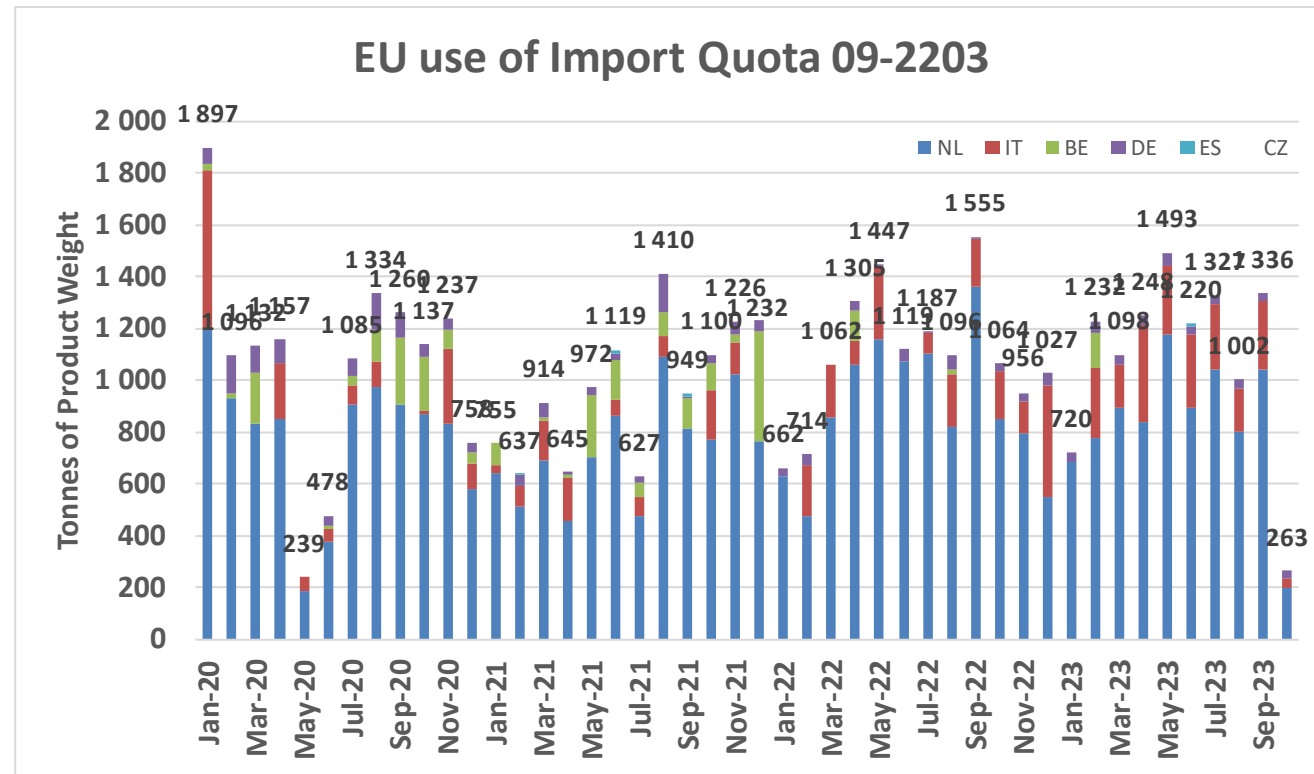


# High Quality Beef Import Quotas

Origin	GATT 2022-2023				
	2022-Q3	2022-Q4	2023-Q1	2023-Q2	Total
NL	3 283	2 201	2 355	2 910	10 749
IT	473	730	436	922	2 561
BE	18	-	134	-	152
DE	64	109	116	113	403
ES	-	-	-	15	15
CZ	-	7	7	-	15
<b>Total import within Quota</b>	<b>3 838</b>	<b>3 047</b>	<b>3 049</b>	<b>3 961</b>	<b>13 895</b>
Available	6 350	6 350	6 350	6 350	25 400
Use	60.44%	47.99%	48.01%	62.37%	54.70%
After transfer		8 862	9 653	9 651	
Use		34.39%	31.59%	41.04%	

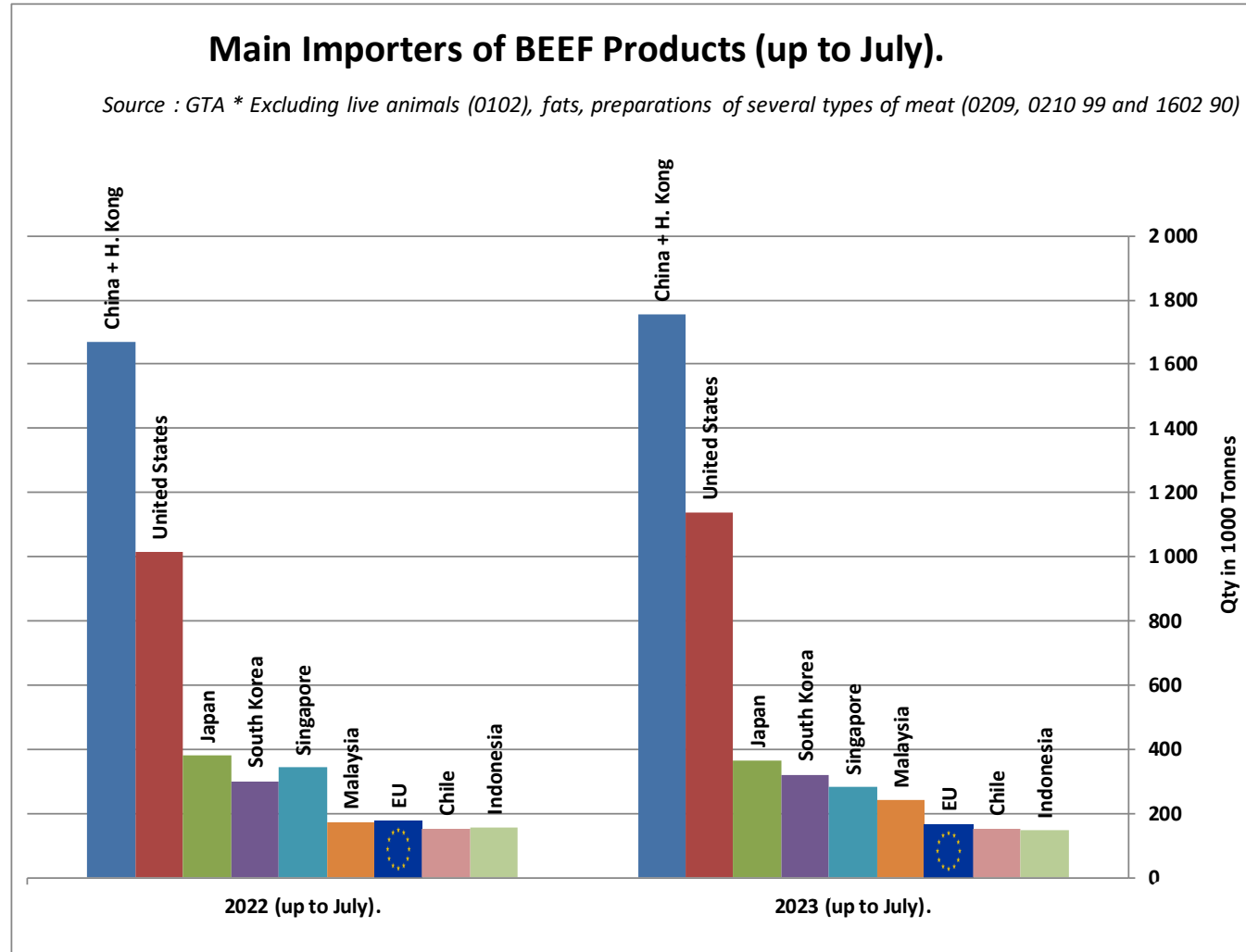
  

Origin	GATT 2023-2024				
	2023-Q3	2023-Q4	2024-Q1	2024-Q2	Total
NL	2 882	196			3 078
IT	686	38			723
BE	-	-			-
DE	96	30			126
ES	-	-			-
CZ	-	-			-
<b>Total import within Quota</b>	<b>3 664</b>	<b>263</b>	<b>-</b>	<b>-</b>	<b>3 927</b>
Available	6 950	6 950			13 900
Use	52.72%	3.79%			28.25%
After transfer		10 236			
Use		2.57%			



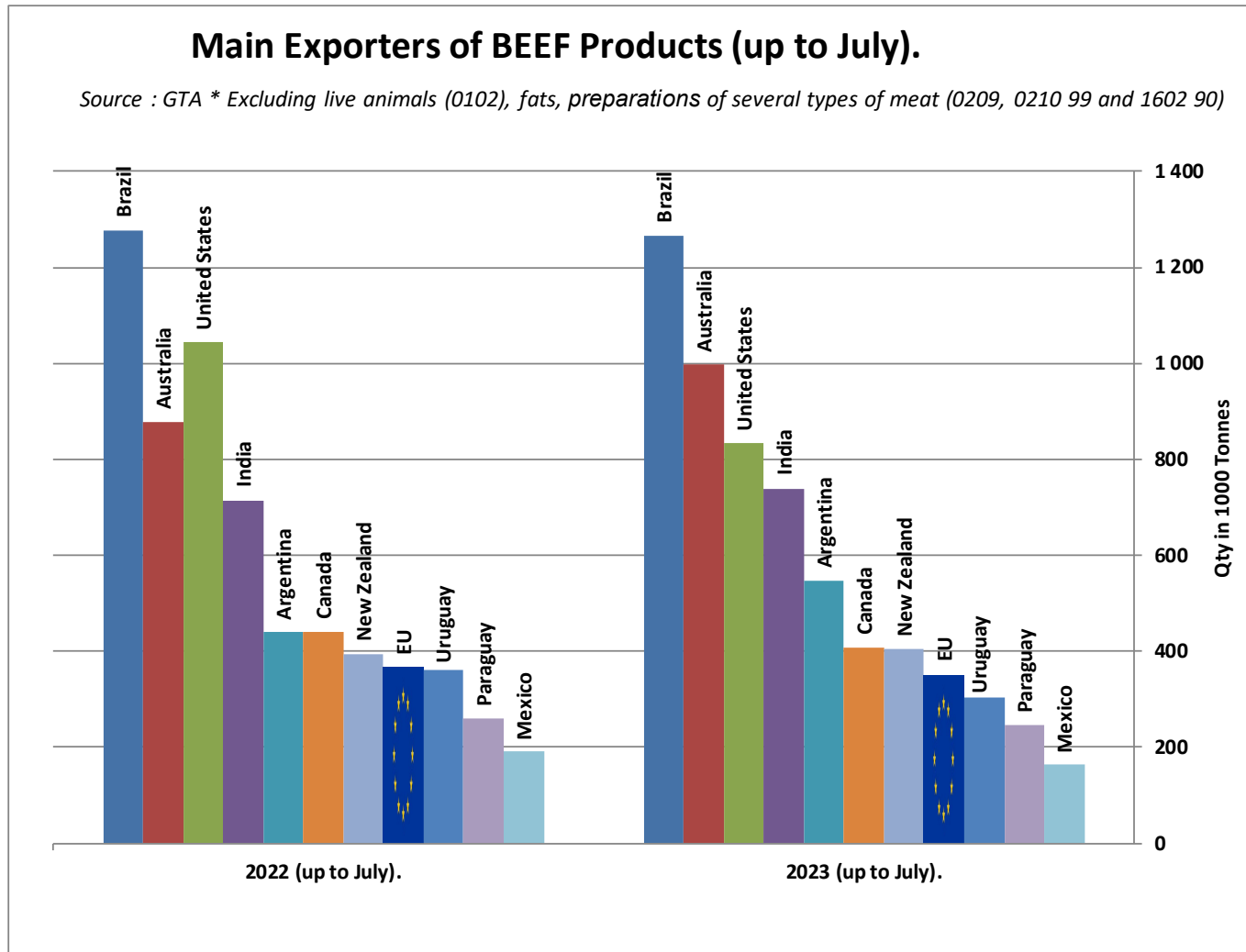
# WORLD BEEF MARKET

## E.U. + UK IMPORTS BEEF MAIN IMPORTERS



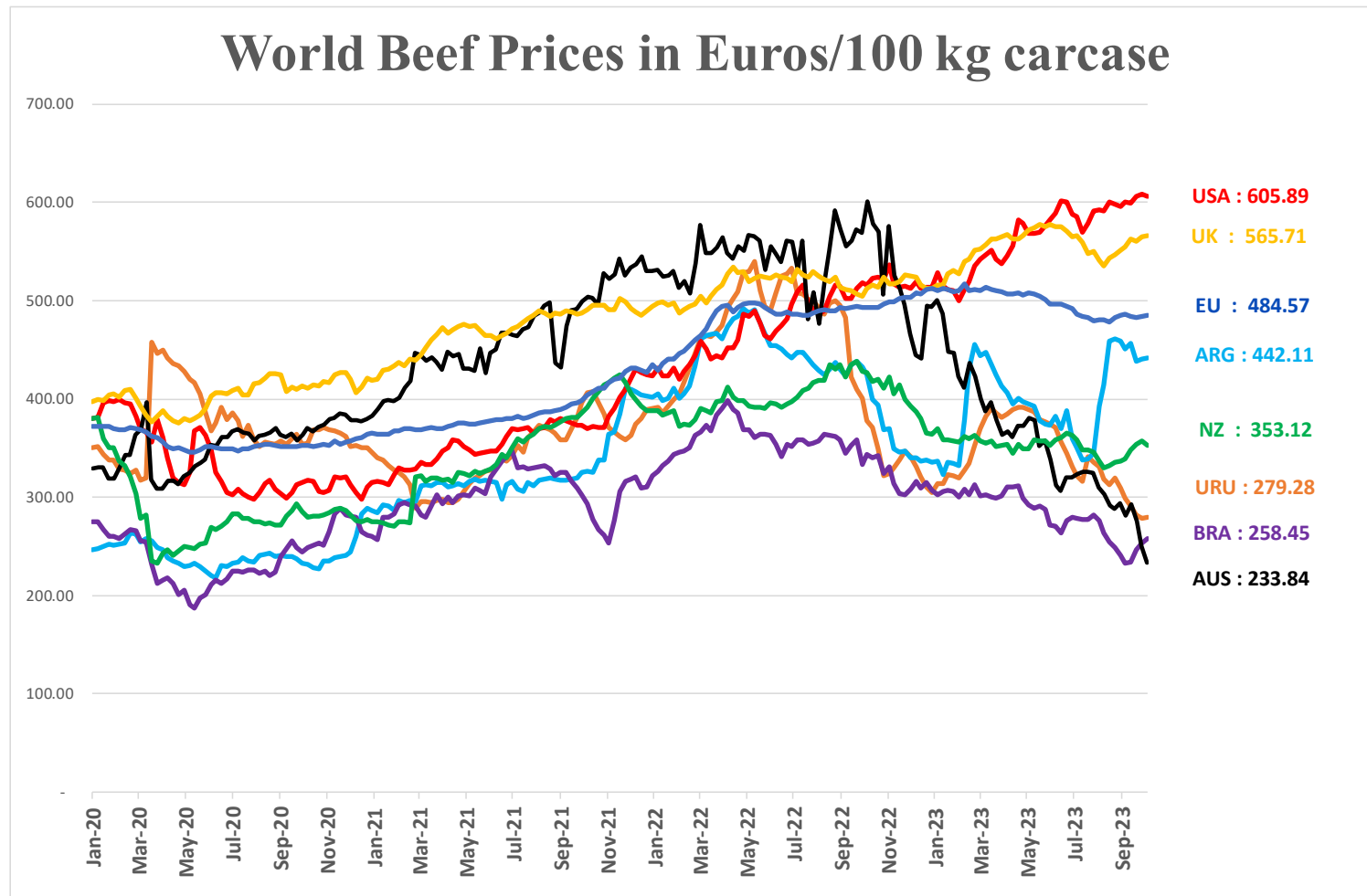
# WORLD BEEF MARKET

## E.U. + UK EXPORTS BEEF MAIN EXPORTERS



# WORLD BEEF MARKET

## STEER PRICES EU, US, AUS, NZ



USA, AUS, URU, ARG, NZ, BRA [World Beef Report](#)  
GB <https://ahdb.org.uk/beef/gb-deadweight-cattle-prices-by-region>  
EU [Member States Communication](#)

# Farm Structure Survey

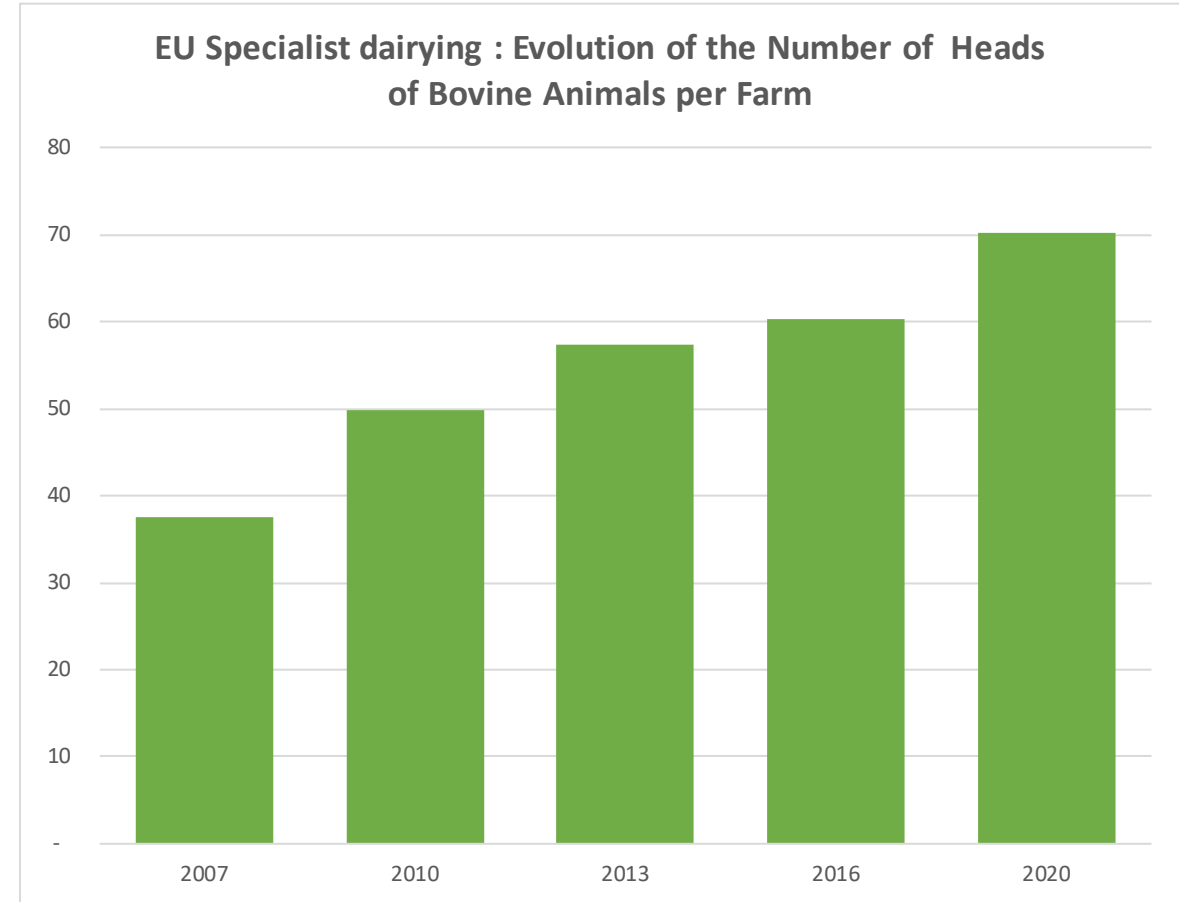
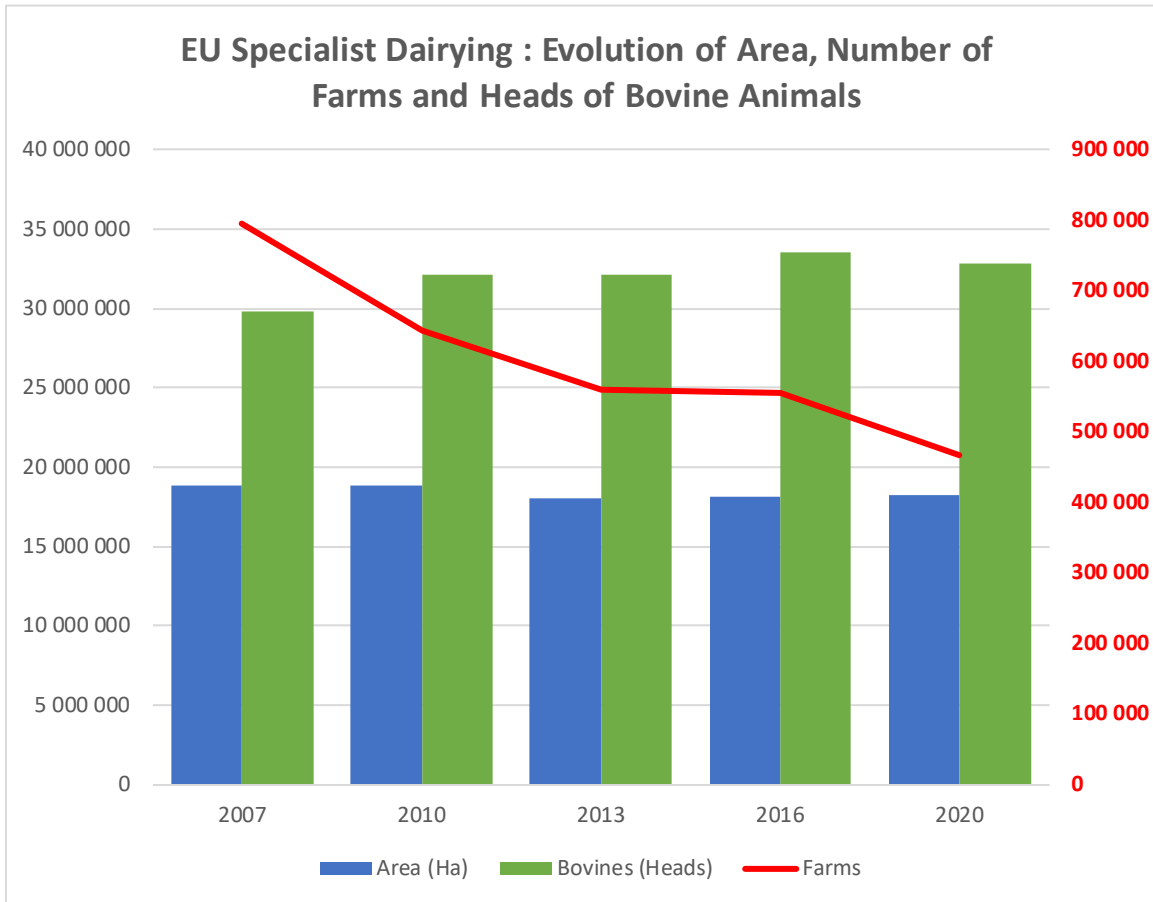
The **livestock unit**, abbreviated as **LSU** (or sometimes as **LU**), is a reference unit which facilitates the aggregation of livestock from various species and age as per convention, via the use of specific coefficients established initially on the basis of the nutritional or feed requirement of each type of animal (see table below for an overview of the most commonly used coefficients).

The reference unit used for the calculation of livestock units (=1 LSU) is the grazing equivalent of one adult **dairy cow** producing 3 000 kg of milk annually, without additional concentrated foodstuffs.

## Livestock unit coefficients

<b>Bovine animals</b>	Under 1 year old	0,400
	1 but less than 2 years old	0,700
	Male, 2 years old and over	1,000
	<b>Heifers</b> , 2 years old and over	0,800
	<b>Dairy cows</b>	<b>1,000</b>
	Other cows, 2 years old and over	0,800

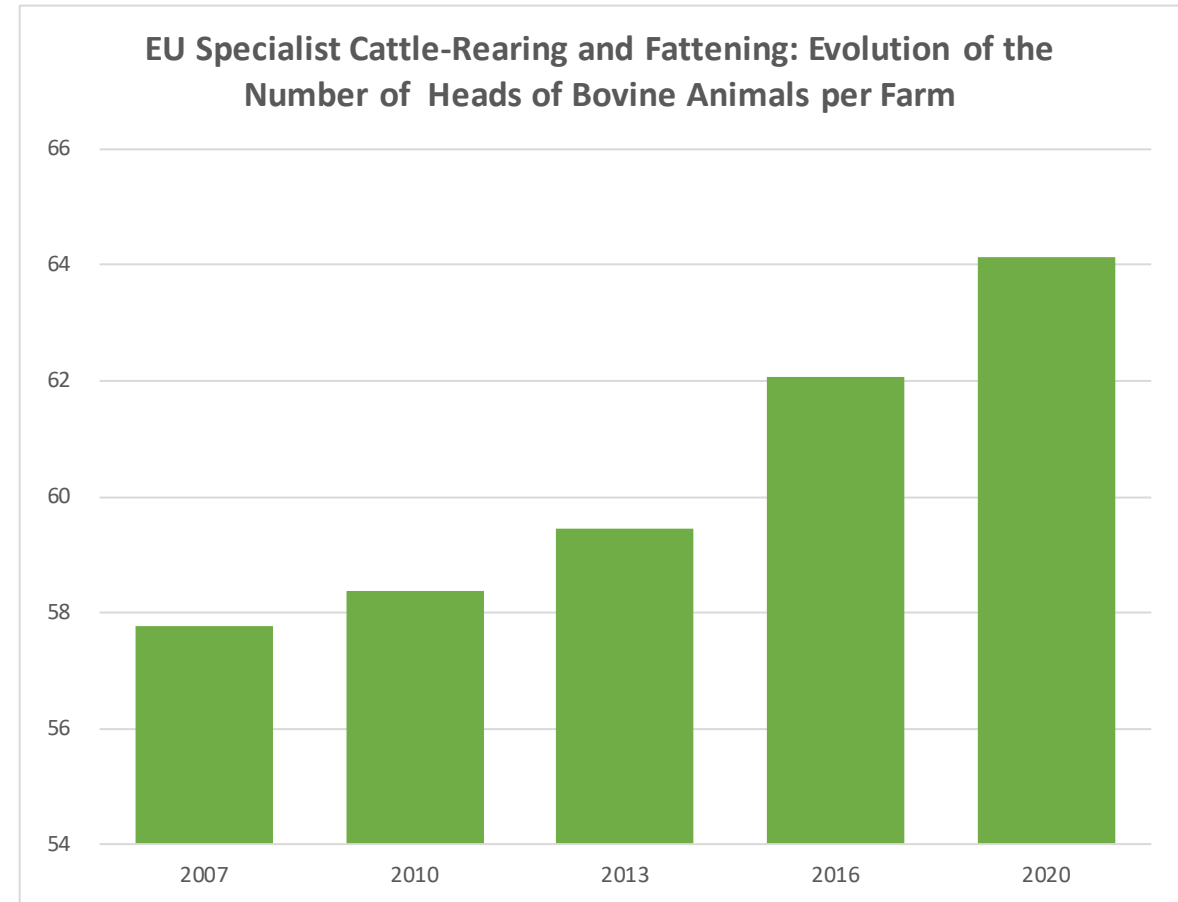
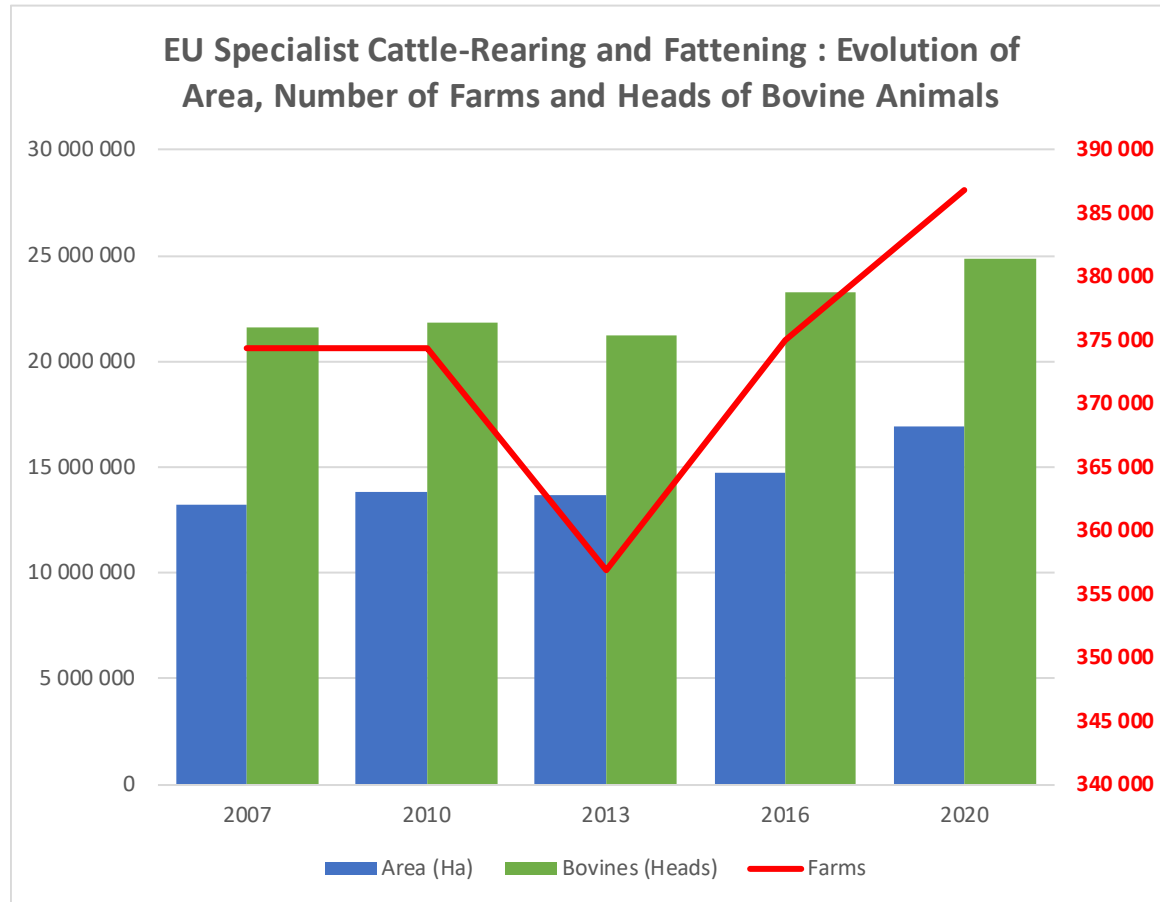
# Farm Structure Survey



19 October 2023

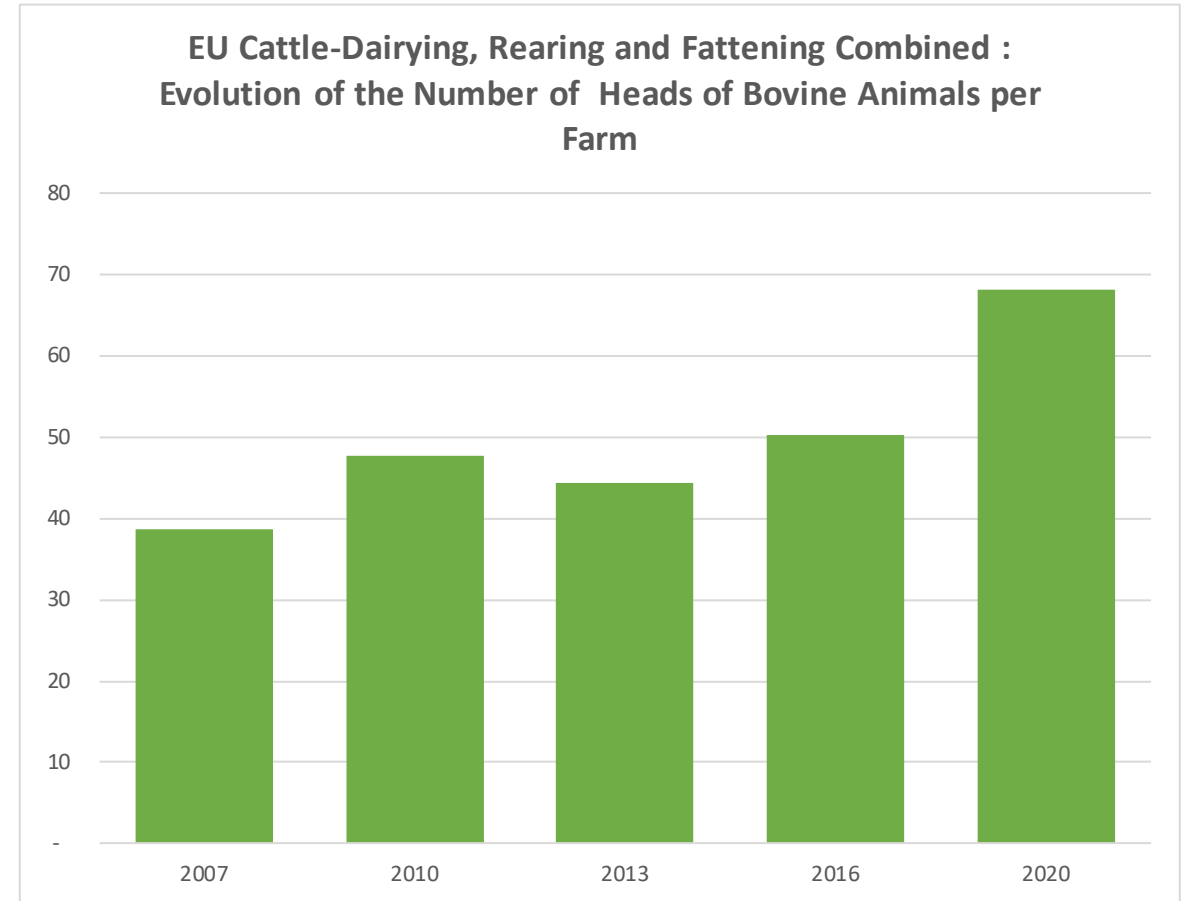
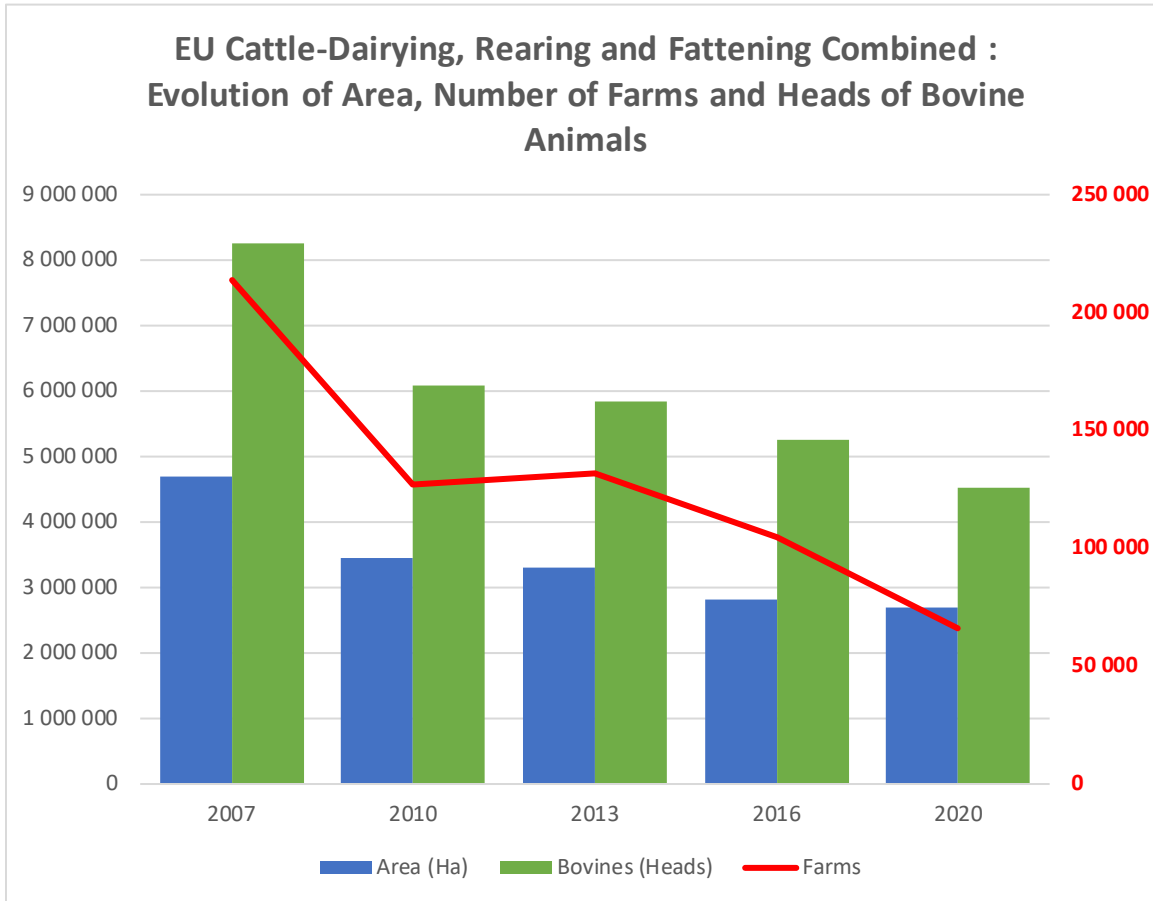


# Farm Structure Survey



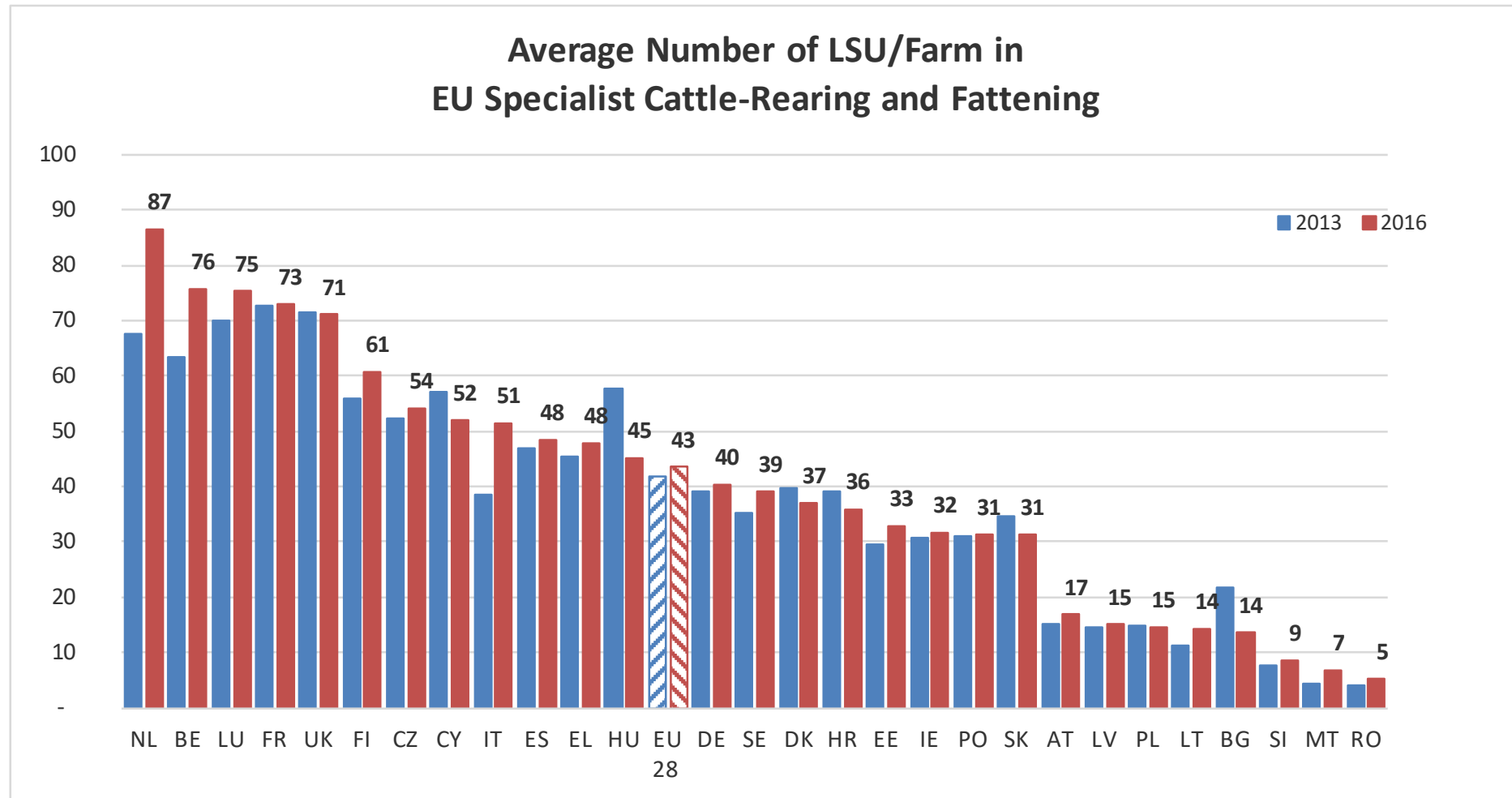
19 October 2023

# Farm Structure Survey



19 October 2023

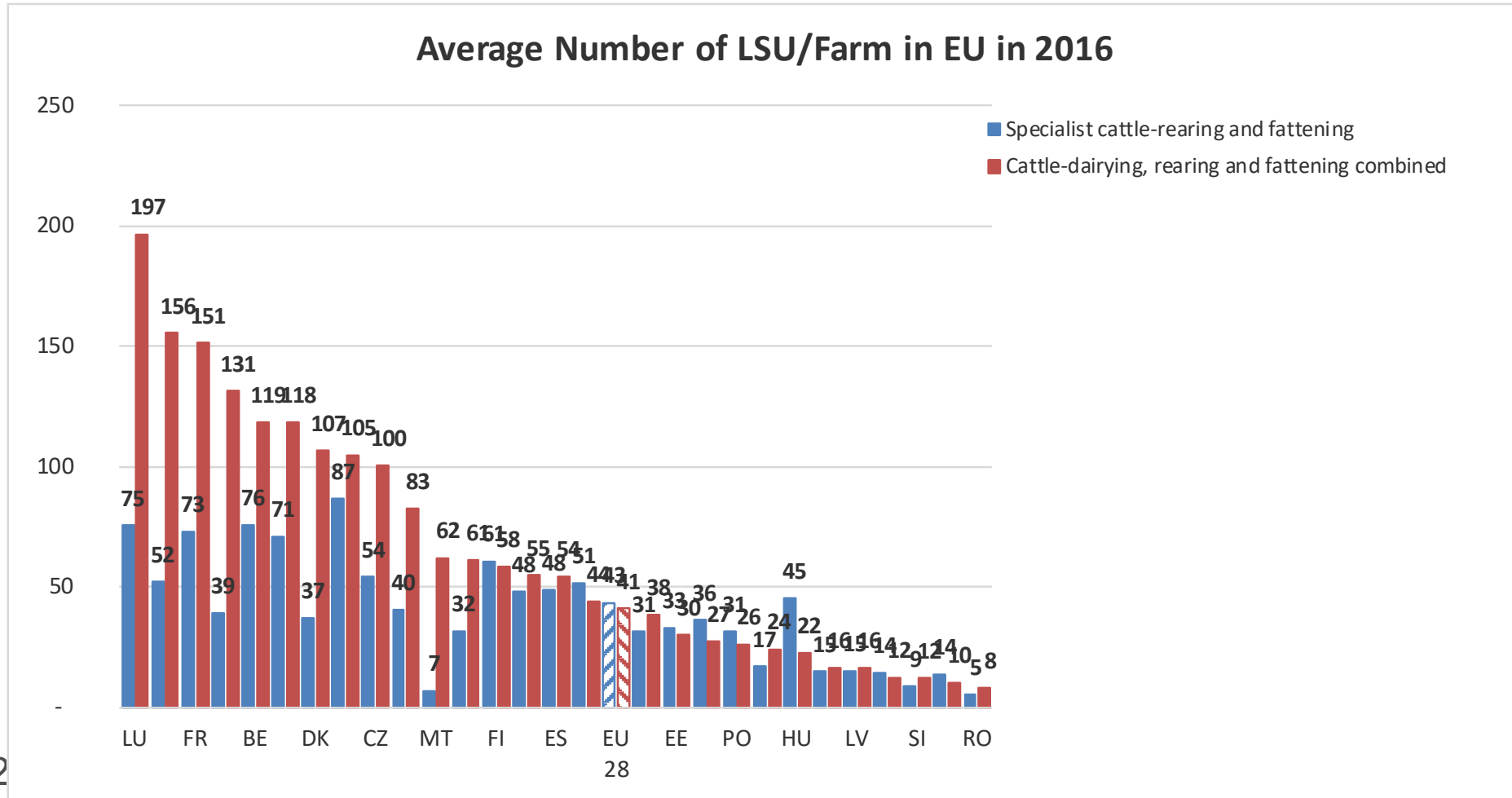
# Farm Structure Survey



19 October 2023

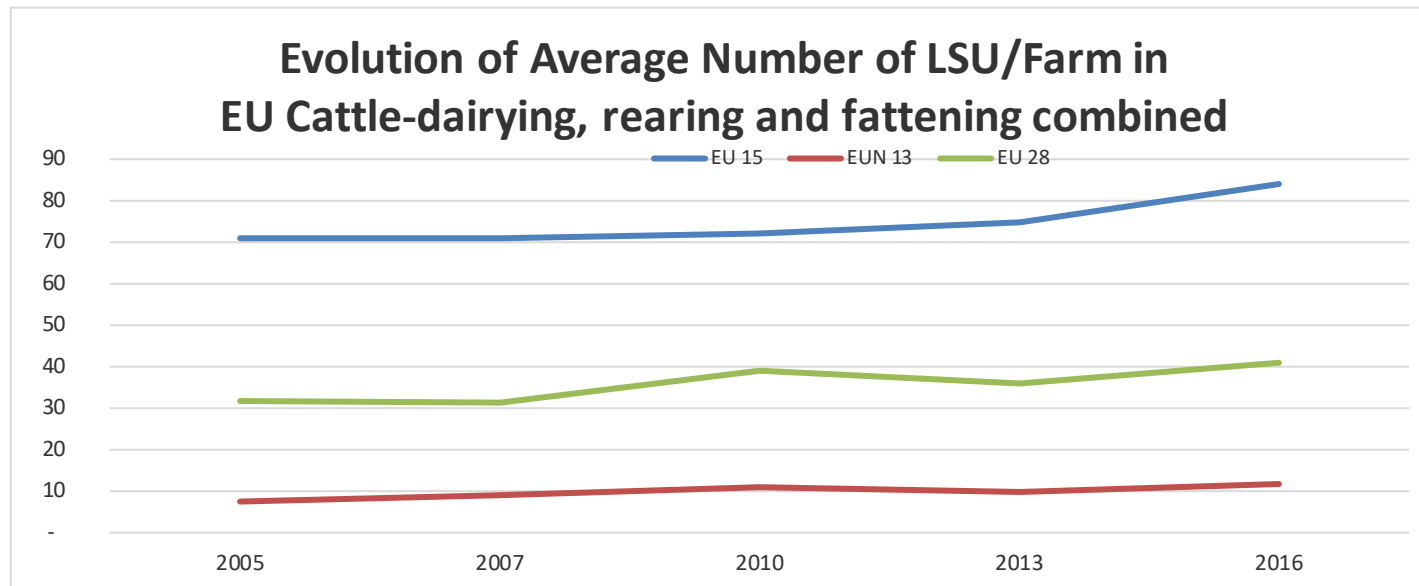
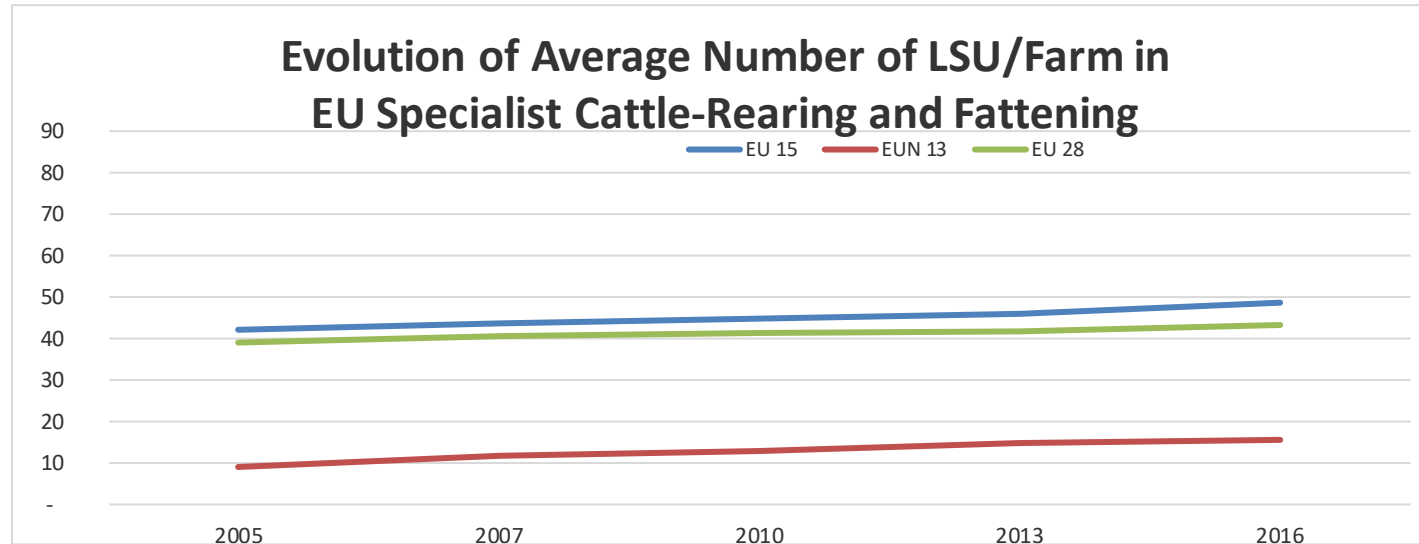
# Farm Structure Survey

Average Number of LSU/Farm in EU in 2016



19 October 202

# Farm Structure Survey



19 October 2023

THANK YOU VERY MUCH

More Information at:

EU Market Observatory

[https://ec.europa.eu/agriculture/market-observatory/meat\\_en](https://ec.europa.eu/agriculture/market-observatory/meat_en)

And

Agri-FOOD data portal:

<http://agridata.ec.europa.eu/>

# Thank you



© European Union 2020

Unless otherwise noted the reuse of this presentation is authorised under the [CC BY 4.0](https://creativecommons.org/licenses/by/4.0/) license. For any use or reproduction of elements that are not owned by the EU, permission may need to be sought directly from the respective right holders.

Slide xx: **element concerned**, source: [e.g. Fotolia.com](https://www.fotolia.com/); Slide xx: **element concerned**, source: [e.g. iStock.com](https://www.istock.com/)

