



EU Beekeeping Sector

National Apiculture Programmes 2020-2022





National Apiculture Programmes (NAP)

- Basic act: Single CMO Regulation (EU) No 1308/2013 (Art. 55-57)
- NAPs run for three years; the apiculture year runs from 1 August – 31 July
- Union/Member States contribute 50% each to the expenditure borne by MSs
- EU funding allocated based on number of beehives in the MSs
- Union contribution for 2020-2022 programmes is EUR 40 millions/year; an increase by 11% from the 2017-2019 programmes
- Programmes include a study of the production and marketing structure in the beekeeping sector
- Eight measures may be included in the apiculture programmes

Eligible measures

- Technical assistance
- Combating **beehive invaders and diseases**, particularly varroasis
- Rationalisation of transhumance
- Measures to support laboratories for the analysis of **apiculture products**
- Restocking of hives
- Implementation of applied research programmes
- **Market monitoring**
- **Enhancement of product quality with a view to exploiting the potential products on the market**

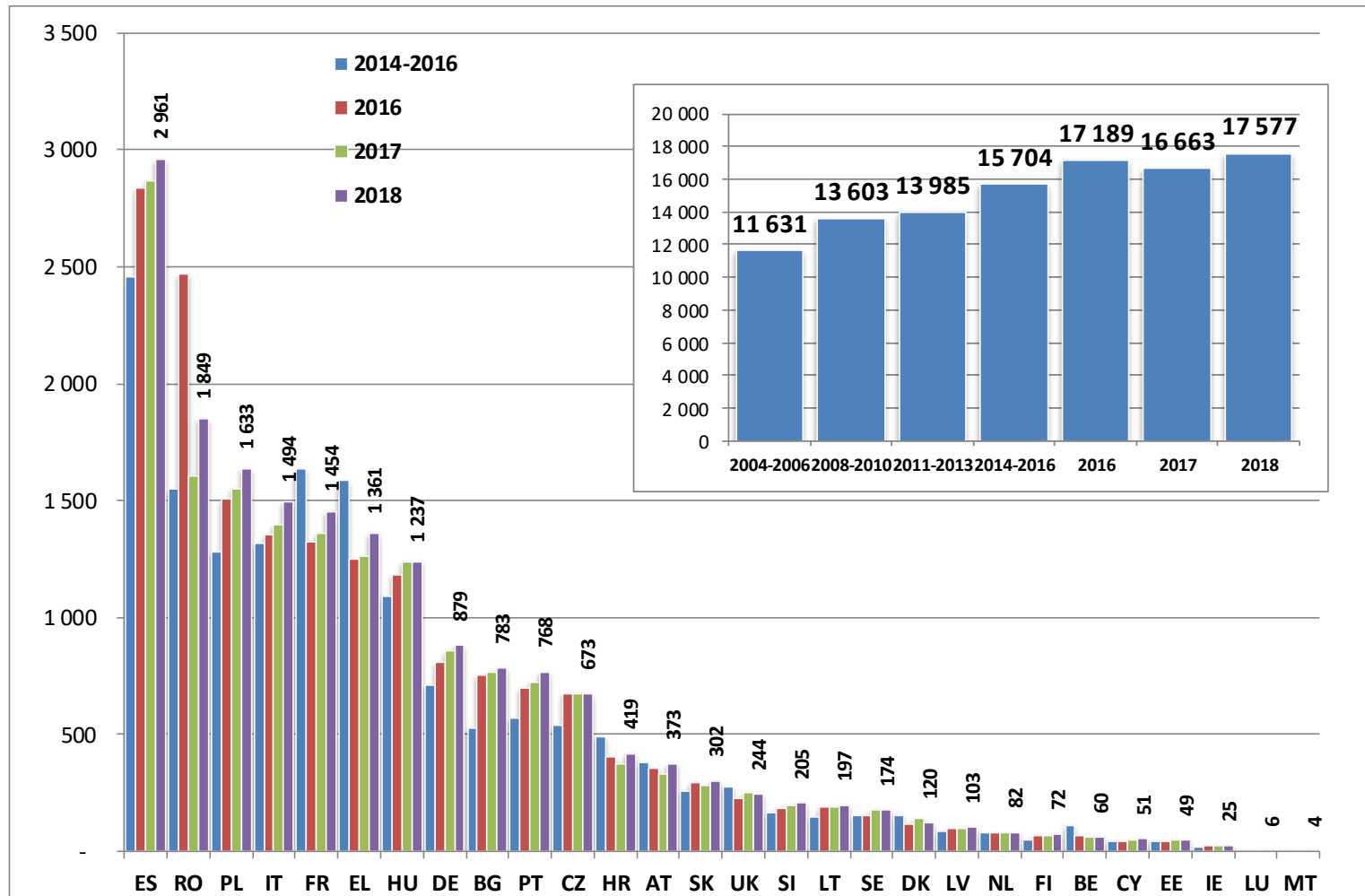
Number of hives (in thousands)



	2003	2004-2006	2008-2010	2011-2013	2014-2016	2016	2017	2018	
ES	2 398	2 465	2 321	2 459	2 459	2 834	2 868	2 961	+3.2%
RO			975	1 280	1 550	2 472	1 603	1 849	+15.3%
PL		949	1 092	1 123	1 281	1 505	1 553	1 633	+5.2%
IT	1 100	1 100	1 157	1 128	1 317	1 356	1 396	1 494	+7.0%
FR	1 297	1 150	1 361	1 339	1 636	1 322	1 360	1 454	+6.9%
EL	1 380	1 388	1 468	1 502	1 584	1 248	1 264	1 361	+7.6%
HU		873	900	900	1 089	1 184	1 239	1 237	-0.2%
DE	900	893	751	712	711	807	859	879	+2.3%
BG		-	672	617	526	754	766	783	+2.3%
PT	633	590	555	563	567	700	721	768	+6.4%
CZ		478	526	498	541	671	671	673	+0.4%
HR	-	-	-	-	492	406	371	419	+12.7%
AT	344	327	311	368	376	354	329	373	+13.2%
SK		192	246	236	255	292	279	302	+8.4%
UK	274	274	274	274	274	223	247	244	-1.2%
SI		143	171	143	167	181	195	205	+4.9%
LT		84	85	118	145	186	192	197	+2.8%
SE	145	145	150	150	150	154	174	174	+0.0%
DK	155	160	170	170	150	115	141	120	-14.9%
LV		54	62	64	84	97	96	103	+6.8%
NL	80	80	80	80	80	79	78	82	+4.6%
FI	42	47	56	46	50	64	67	72	+7.9%
BE	100	111	110	112	108	65	59	60	+0.8%
CY		46	44	44	45	43	50	51	+3.2%
EE		51	33	25	41	44	50	49	-2.4%
IE	20	20	22	24	16	21	23	25	+5.8%
LU	10	11	9	8	8	6	6	6	-1.5%
MT		2	2	3	3	4	4	4	+2.8%
EU	8 877	11 631	13 603	13 985	15 704	17 189	16 663	17 577	+5.5%

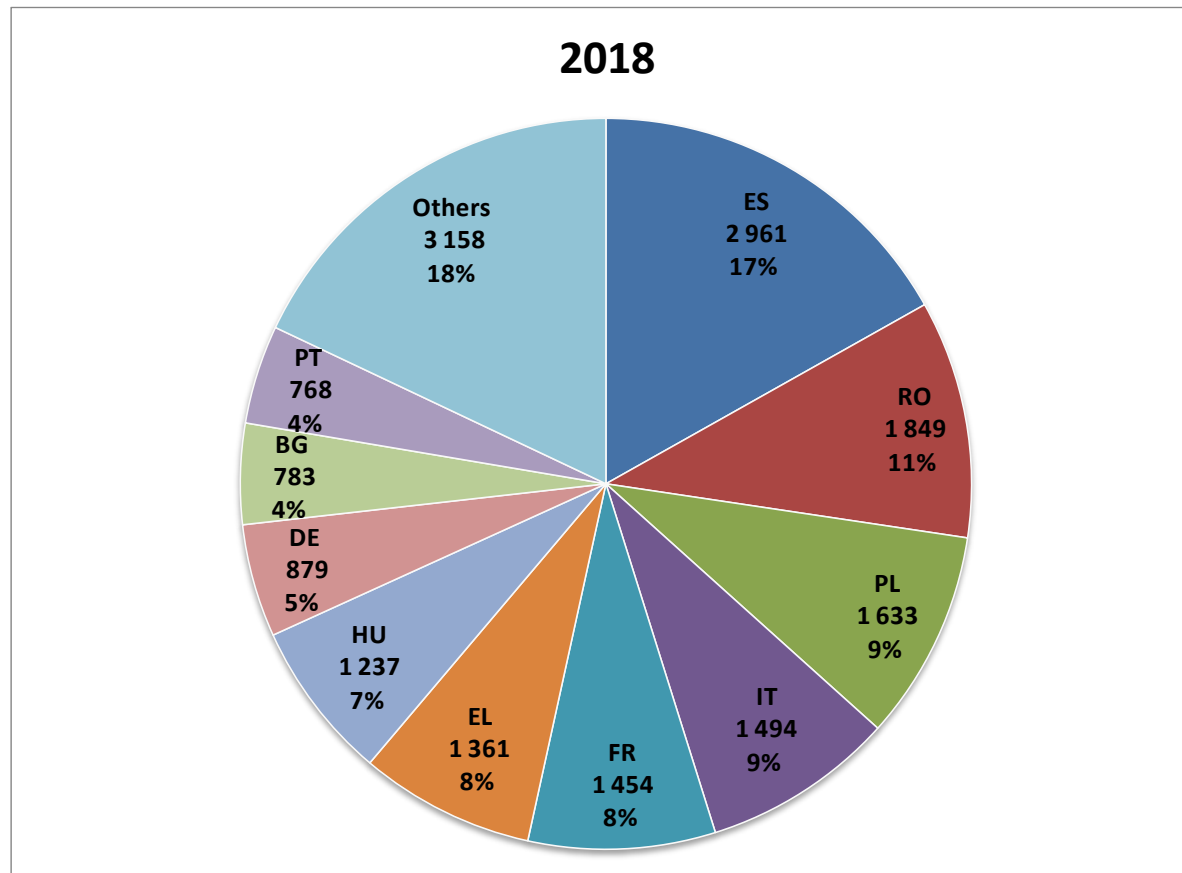
source: MSs notifications under
Reg. 2015/1366

Evolution of the number of hives (in thousands)



source: MSs notifications under Reg. 2015/1366

Beehives in the EU: Member States' Repartition



source: MSs notifications
under Reg. 2015/1366

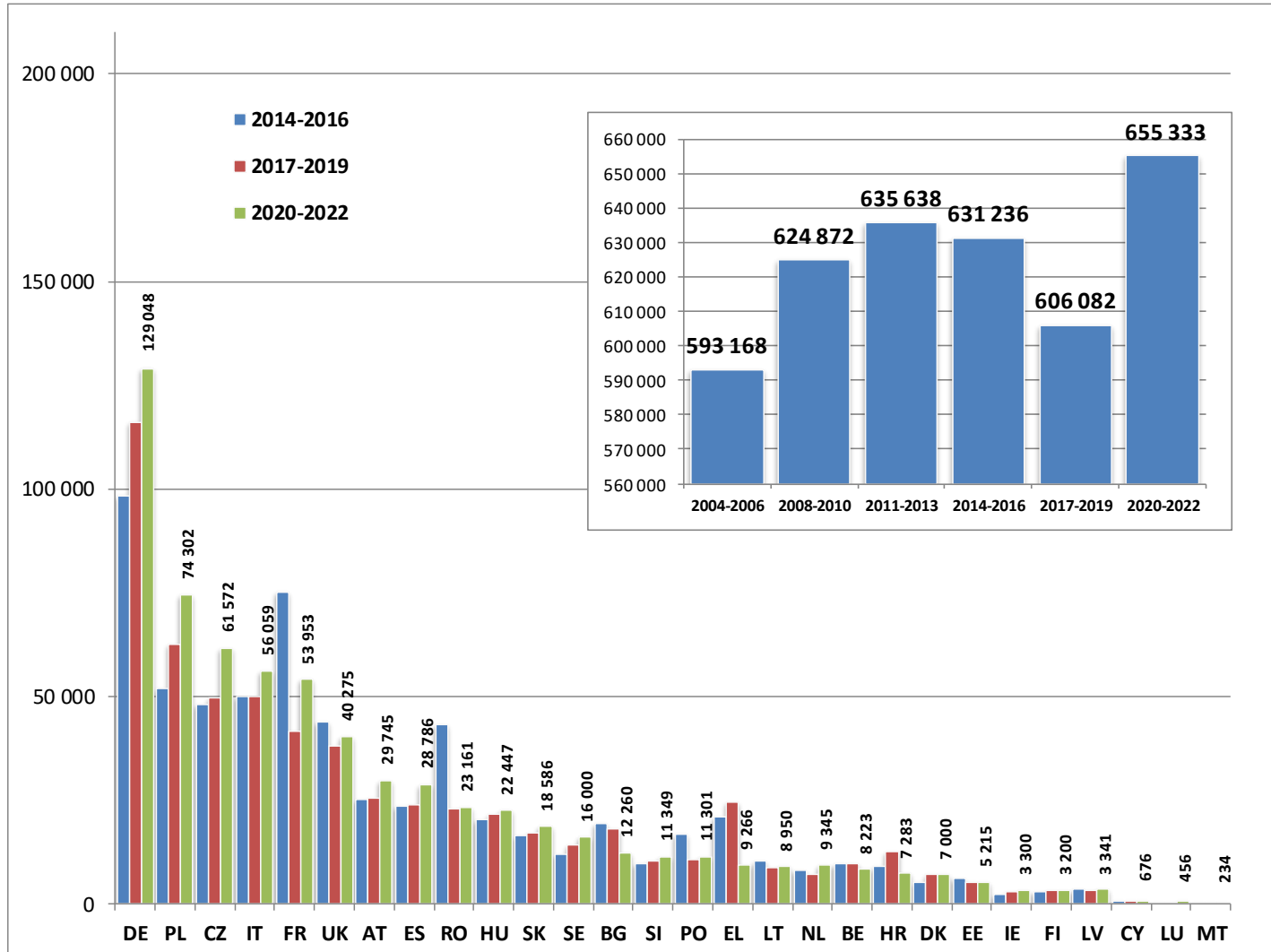
Number of beekeepers



	2003	2004-2006	2008-2010	2011-2013	2014-2016	2017-2019	2020-2022
DE	103 600	103 600	103 600	103 600 *	98 297	116 000	129 048
PL		42 800	39 410	44 999	51 778	62 575	74 302
CZ		49 734	48 678	46 033	48 132	49 486	61 572
IT	75 000	50 000	70 000	70 000	50 000	50 000	56 059
FR	100 000	100 000	69 600	73 500	75 000	41 560	53 953
UK	43 600	43 600	43 900	43 900	43 900	37 888	40 275
AT	25 027	24 421	23 000	24 451	25 099	25 277	29 745
ES	27 420	24 606	23 265	23 816	23 473	23 816	28 786
RO			36 800	40 000 *	43 200	22 930	23 161
HU		15 302	16 000	16 000	20 410	21 565	22 447
SK		18 123	14 339	14 699	16 338	17 171	18 586
SE	14 000	14 000	15 000	15 000	12 000	14 000	16 000
BG			29 097 *	29 097	19 179	17 969	12 260
SI		7 955	7 620	8 838	9 638	10 145	11 349
PO	26 000	22 000	15 267	17 291	16 774	10 698	11 301
EL	22 000	19 560	19 814	19 392	21 031	24 582	9 266
LT		11 000	10 923	13 000	10 132	8 536	8 950
NL	10 000	10 000	10 000	8 000	8 000	7 000	9 345
BE	11 000	7 715	7 000	7 600	9 500	9 490	8 223
HR					8 953	12 526	7 283
DK	6 000	5 000	4 278	4 300	5 000	7 000	7 000
EE		7 600	7 400	2 416	5 934	5 250	5 215
IE	2 300	2 200	2 200	2 388	2 326	3 000	3 300
FI	4 200	4 200	3 300	2 500	2 700	3 100	3 200
LV		8 300	3 300	3 700	3 346	3 282	3 341
CY		634	544	588	550	691	676
LU	650	650	369	348	331	337	456
MT		168	168	182	215	208	234
EU	470 797	593 168	624 872	635 638	631 236	606 082	655 333

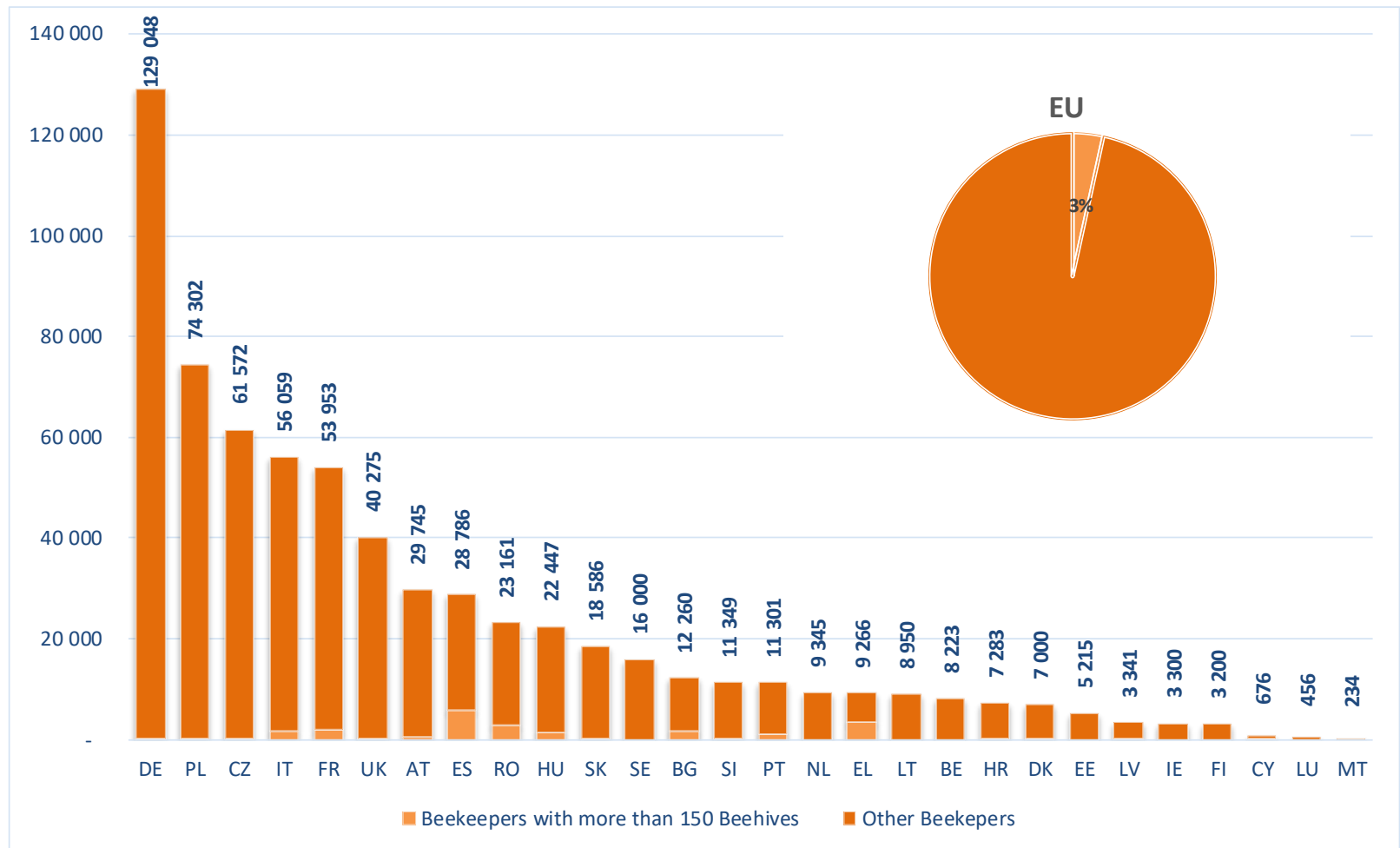
source: MSs national apiculture programmes (NAPs); Reg. 2015/1368

Evolution of the Number of beekeepers

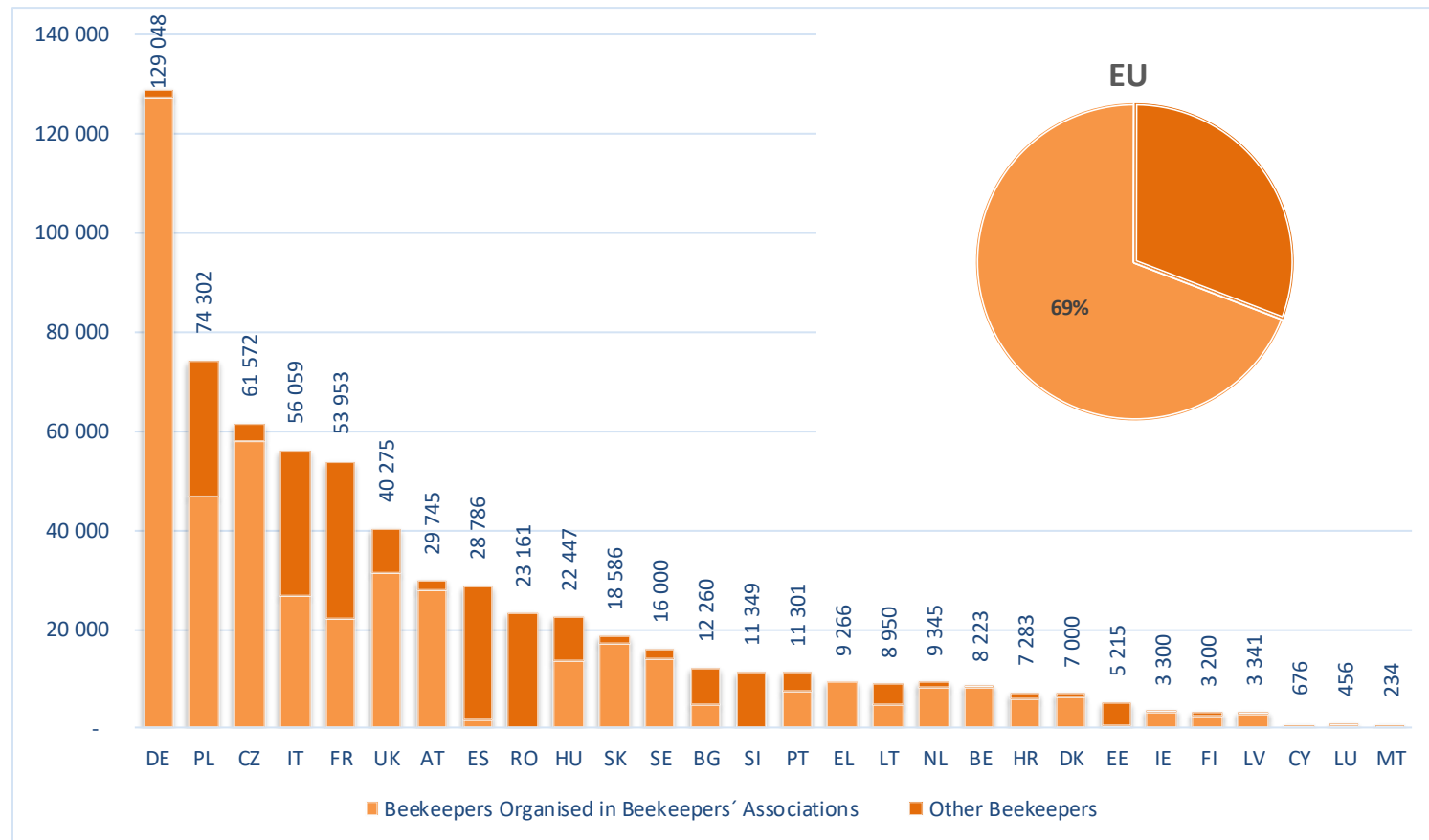


Source: MSs national apiculture programmes (NAPs); Reg. 2015/1368

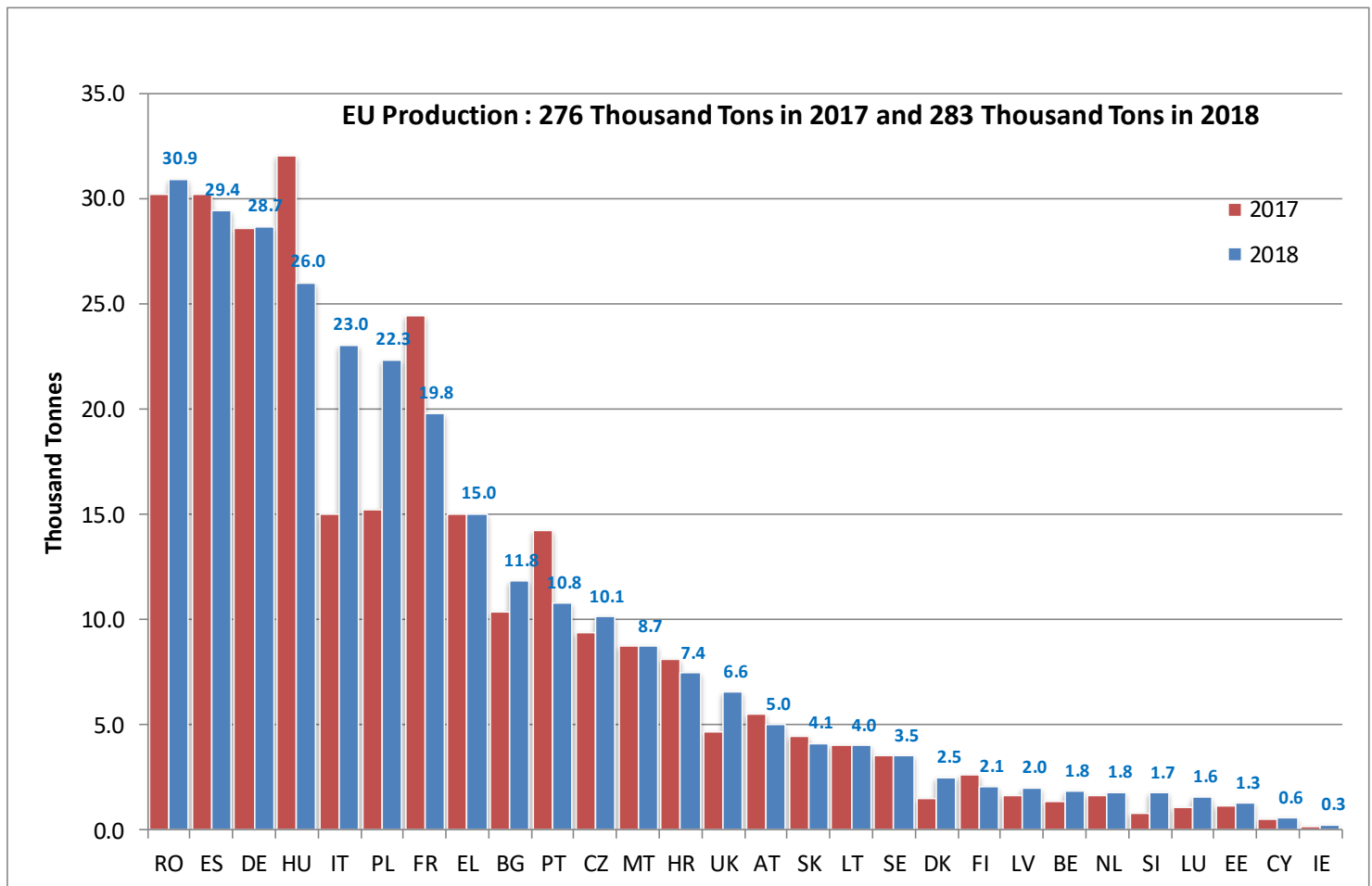
Beekeepers with more than 150 Beehives (2017-2018)



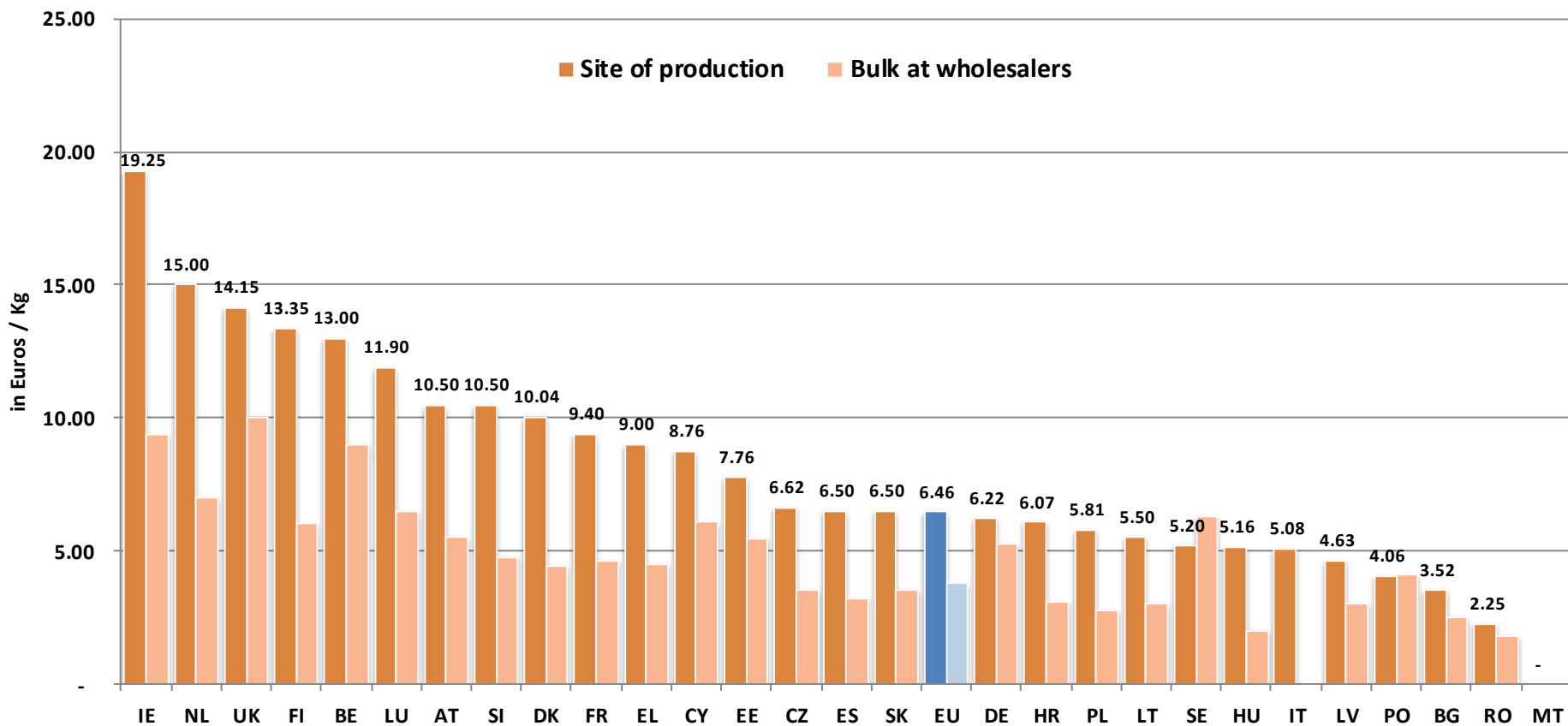
Beekeepers Organised in Beekeepers' Associations (2017-2018)



EU Honey Production

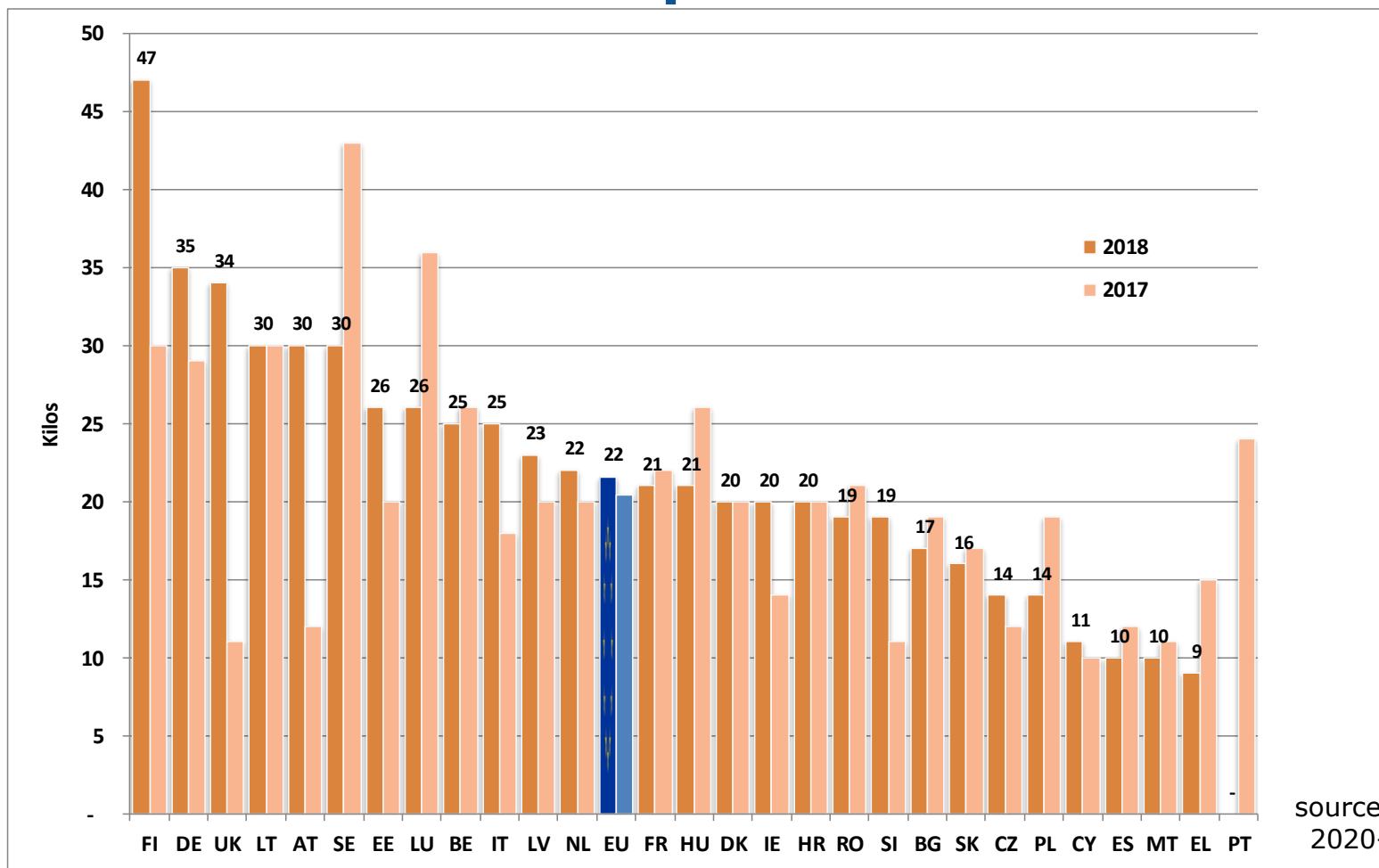


Average Prices for Multi-floral Honey (2017-2018)



source: NAPs 2020-2022

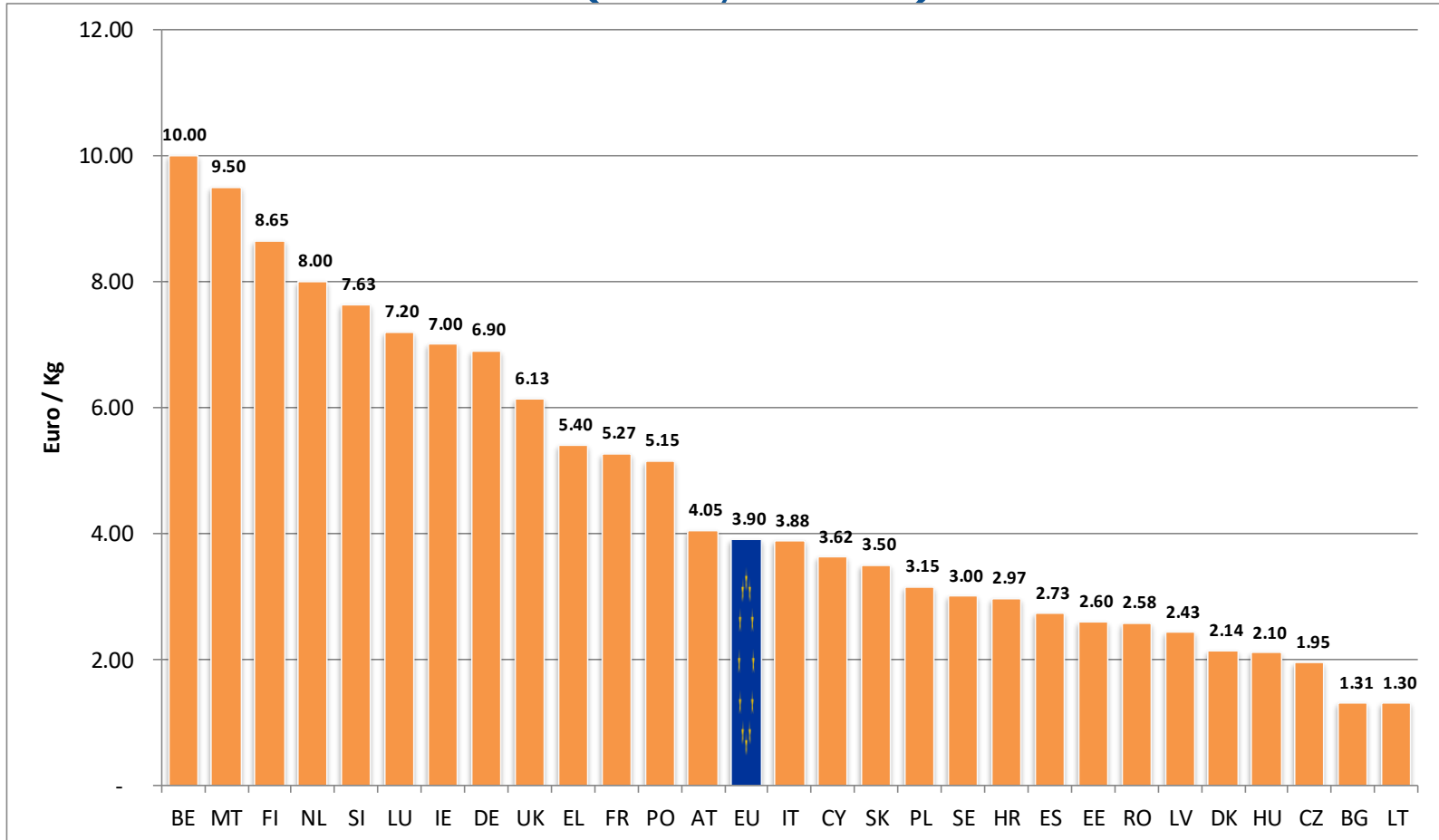
Estimate Average Yield in Kg of Honey per Beehive and per Year



source: NAPs
2020-2022

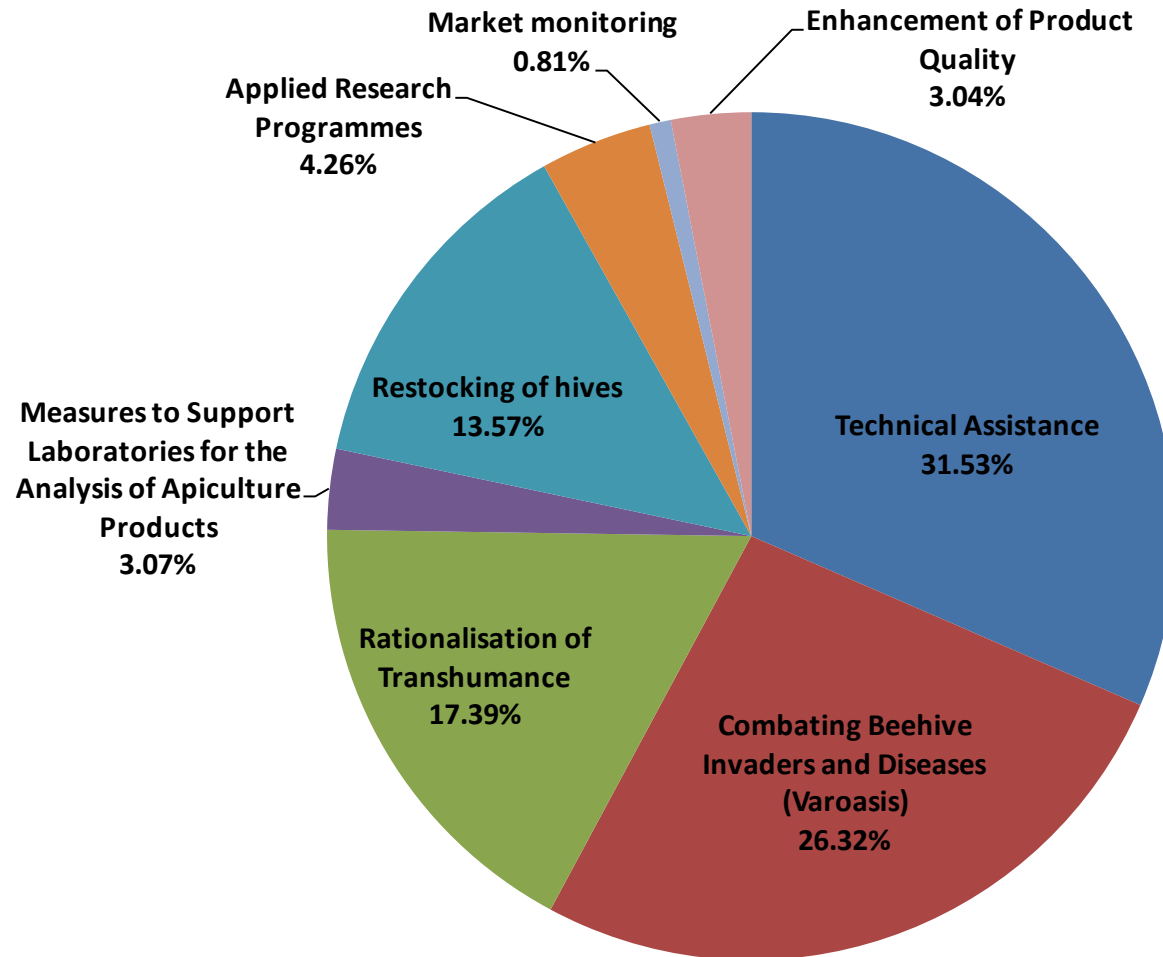


Average Production Cost per Kg of Honey Produced (2017-2018)

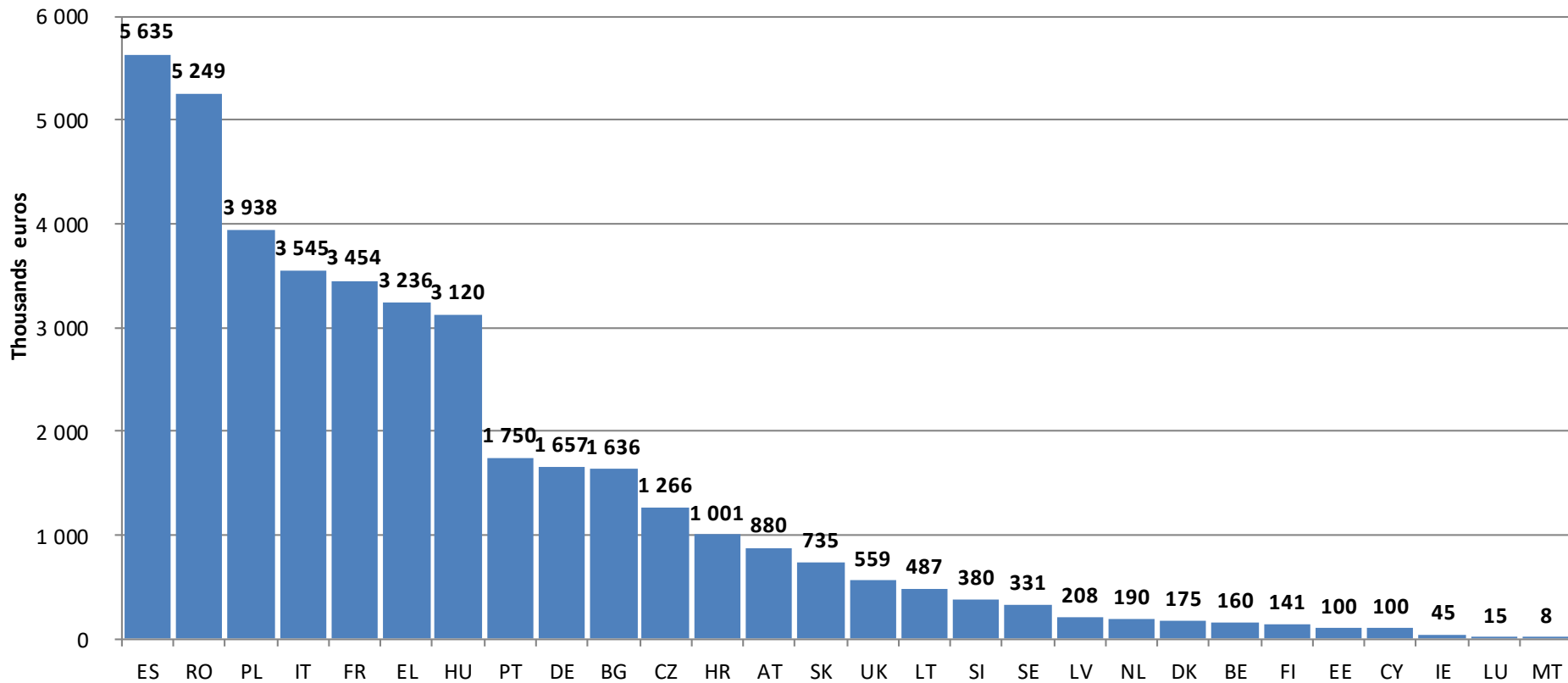


source: NAPs 2020-2022

Budget as planned by MSs per measure for 2020



Budget Allocated by Member State for 2020



source: Commission Decision 2019/974

Where to find data:

- http://ec.europa.eu/agriculture/markets/index_en.htm
- **Click on link: Honey-Beekeeping**

Main source: Member States' national apiculture programmes for apiculture years 2020-2022.



Legislation

- Regulation (EU) No 1308/2013 establishing a common market organisation (the CMO) <https://eur-lex.europa.eu/legal-content/EN/TXT/?qid=1565695003272&uri=CELEX:32013R1308>
- Commission Regulation (EU) 2015/1366 with regard to aid in the apiculture sector (*MSs notifications of number of beehives*); <https://eur-lex.europa.eu/legal-content/EN/TXT/?qid=1565605138034&uri=CELEX:32015R1366>
- Commission Regulation (EU) 2015/1368 with regard to aid in the apiculture sector <https://eur-lex.europa.eu/legal-content/EN/TXT/?qid=1565605181573&uri=CELEX:32015R1368>
- Commission Implementing Decision (EU) 2019/974 approving the national apiculture programmes; <https://eur-lex.europa.eu/legal-content/EN/TXT/?qid=1565605289756&uri=CELEX:32019D0974>