

Table B1 Effective minimum sugar revenues per tonne in Belgium

1 Year	2 Intervention Price (ECU/t)	3 Regional premium ECU/t	4 Product. levies (% of IP)	5 National support	6 Effective minimum revenue (in agr. ECU/t)	7 Agric. exchange rate	8 Effective minimum revenue (nat. currency)	9 Financial exchange rate	10 Effective minimum revenue (fin ECU/t)	11 Index column 8	12 GDP deflator	13 Index column 8 constant values	14 Index column 10
1981/82	469.5	-	7.3	-	435.2	41.1328	17,902	42.6901	419.3	80	78	102	82
1982/83	514.1	-	8.6	-	469.7	43.1417	20,265	44.7163	453.2	91	83	109	88
1983/84	534.7	-	8.6	-	488.6	44.9008	21,937	45.4431	482.7	98	88	112	94
1984/85	534.7	-	8.6	-	488.6	46.4118	22,675	45.2733	500.9	101	93	109	98
1985/86	541.8	-	8.6	-	495.1	46.4118	22,976	44.5324	515.9	103	97	106	101
1986/87	541.8	-	12.0	-	476.9	46.8712	22,351	43.5615	513.1	100	100	100	100
1987/88	541.8	-	10.1	-	486.8	48.0658	23,400	43.1623	542.1	105	102	103	106
1988/89	541.8	-	11.0	-	482.4	48.1754	23,241	43.4144	535.3	104	106	99	104
1989/90	531.0	-	6.0	-	498.9	48.2869	24,090	43.0869	559.1	108	110	98	109
1990/91	530.1	-	8.8	-	483.3	48.4810	23,429	42.4761	551.6	105	113	93	108
1991/92	530.1	-	7.4	-	491.0	48.5563	23,842	42.2022	564.9	107	117	91	110
1992/93	530.1	-	8.2	-	486.6	48.5563	23,628	41.2224	573.2	106	121	87	112
1993/94	523.3	-	9.9	-	471.7	49.0910	23,158	40.0972	577.5	104	125	83	113
1994/95	523.3	-	9.1	-	475.6	49.3070	23,451	39.3003	596.7	105	128	82	116
1995/96	631.9	-	7.9	-	582.2	39.5239	23,010	38.8867	591.7	103	130	79	115
1996/97	631.9	-	8.5	-	578.5	39.9728	23,124	39.6904	582.6	103	132	78	114
1997/98	631.9	-	8.5	-	578.0	40.9112	23,649	40.5254	583.6	106	134	79	114
1998/99	631.9	-	10.1	-	568.1	40.6384	23,086	40.3399	572.3	103	136	76	112

Note 1: Intervention prices from 1984/85-1994/95 in agricultural ECUs. Deviation from financial ECUs increased from 1.033651 to 1.207509 (switch over factor). Switch over factors are incorporated in the agricultural exchange rates. Intervention price of 1995/96 = 1.207509 x Interv. Price 1994/95.

Note 2: Exchange rates are averages of the year, except the agricultural exchange rate of 1994/95, which is the average of 1/7/94 to 1/2/95, because of the switch over from agric. ECUs to financial ECUs per 1/2/95.

Figure B1

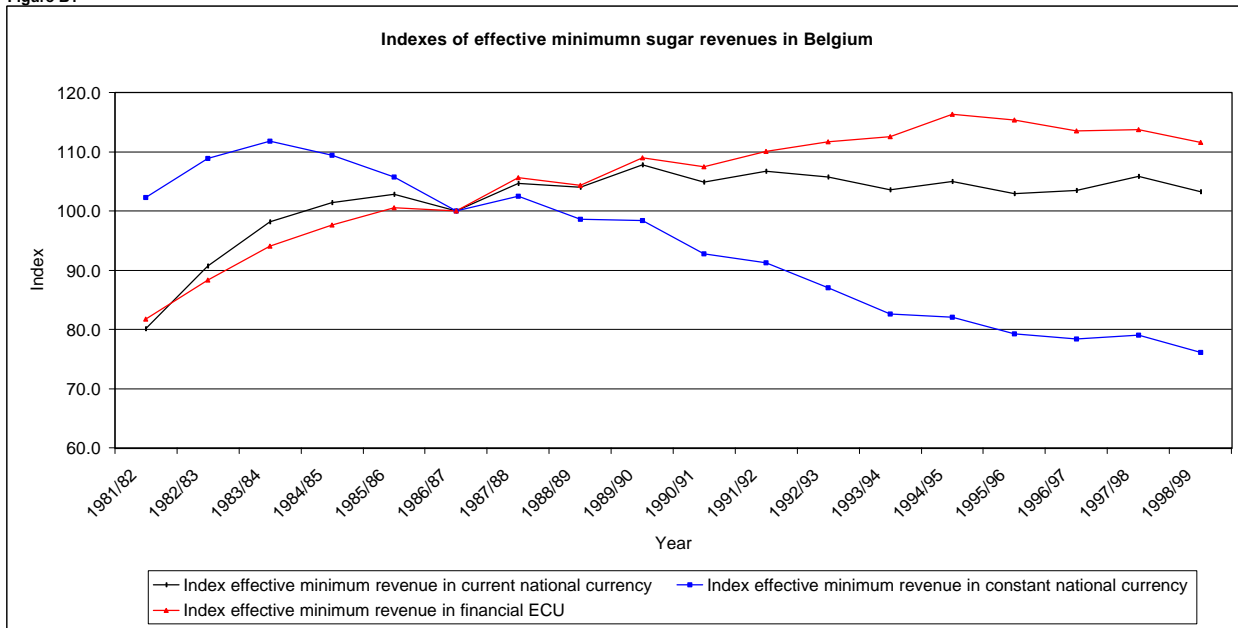


Table B2 Effective minimum sugar revenues per tonne in Denmark

1 Year	2 Intervention Price (ECU/t)	3 Regional premium ECU/t	4 Product. levies (% of IP)	5 National support	6 Effective minimum revenue (in agr. ECU/t)	7 Agric. exchange rate	8 Effective minimum revenue (nat. currency)	9 Financial exchange rate	10 Effective minimum revenue (fin ECU/t)	11 Index column 8	12 GDP deflator	13 Index column 8 constant values	14 Index column 10
1981/82	469.5	-	8.8	-	428.1	7.9723	3,413	8.0159	425.7	86	75	115	85
1982/83	514.1	-	10.5	-	459.9	8.2340	3,787	8.1309	465.8	96	82	117	93
1983/84	534.7	-	10.5	-	478.4	8.2340	3,939	8.1507	483.3	100	87	114	97
1984/85	534.7	-	10.5	-	478.4	8.4150	4,026	8.0983	497.1	102	91	111	99
1985/86	541.8	-	10.5	-	484.7	8.4150	4,079	7.9923	510.4	103	96	108	102
1986/87	541.8	-	14.6	-	462.5	8.5406	3,950	7.9014	499.9	100	100	100	100
1987/88	541.8	-	12.4	-	474.7	8.7550	4,156	7.8968	526.3	105	104	101	105
1988/89	541.8	-	13.4	-	469.3	8.7980	4,129	7.9958	516.4	105	108	97	103
1989/90	531.0	-	7.2	-	492.7	8.9301	4,400	7.9712	552.0	111	112	100	110
1990/91	530.1	-	10.8	-	472.9	8.9660	4,240	7.8921	537.3	107	114	94	107
1991/92	530.1	-	8.9	-	482.8	8.9799	4,336	7.8981	549.0	110	118	93	110
1992/93	530.1	-	10.0	-	477.2	8.9799	4,285	7.7364	553.9	108	120	91	111
1993/94	523.3	-	12.0	-	460.4	9.3034	4,283	7.5554	566.9	108	121	90	113
1994/95	523.3	-	11.1	-	465.1	9.3481	4,348	7.4779	581.4	110	123	89	116
1995/96	631.9	-	9.6	-	571.5	7.5152	4,295	7.3585	583.7	109	126	87	117
1996/97	631.9	-	10.3	-	566.8	7.5000	4,251	7.3732	576.5	108	129	84	115
1997/98	631.9	-	10.4	-	566.2	7.5500	4,275	7.4770	571.7	108	132	82	114
1998/99	631.9	-	12.3	-	554.2	7.4989	4,156			105	136	78	

Note 1: Intervention prices from 1984/85-1994/95 in agricultural ECUs. Deviation from financial ECUs increased from 1.033651 to 1.207509 (switch over factor). Switch over factors are incorporated in the agricultural exchange rates. Intervention price of 1995/96 = 1.207509 x Interv. Price 1994/95.

Note 2: Exchange rates are averages of the year, except the agricultural exchange rate of 1994/95, which is the average of 1/7/94 to 1/2/95, because of the switch over from agric. ECUs to financial ECUs per 1/2/95.

Figure B2

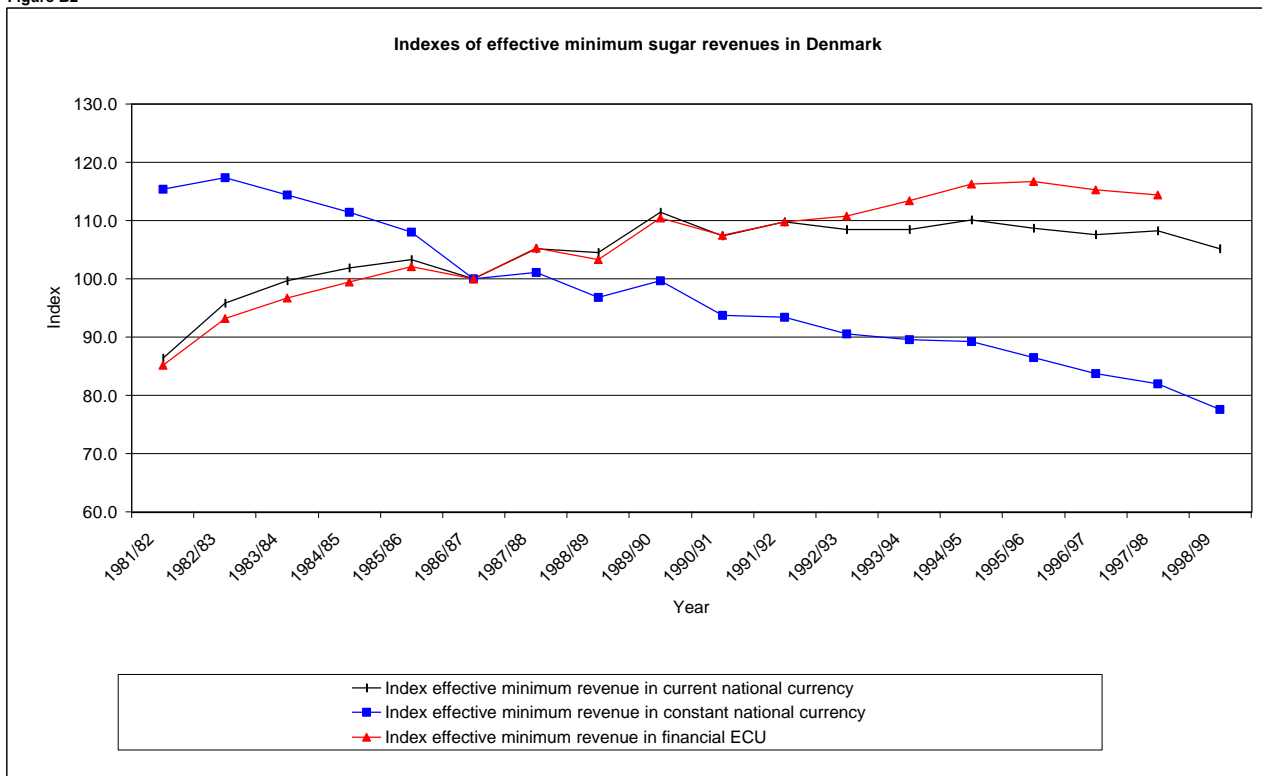


Table B3 Effective minimum sugar revenues per tonne in France

1 Year	2 Intervention Price (ECU/t)	3 Regional premium ECU/t	4 Product. levies (% of IP)	5 National support	6 Effective minimum revenue (in agr. ECU/t)	7 Agric. exchange rate	8 Effective minimum revenue (nat. currency)	9 Financial exchange rate	10 Effective minimum revenue (fin ECU/t)	11 Index column 8	12 GDP deflator	13 Index column 8 constant values	14 Index column 10
1981/82	469.5	-	8.5	-	429.7	6.0775	2,612	6.1929	421.7	79	71	111	87
1982/83	514.1	-	9.9	-	463.0	6.1956	2,868	6.5433	438.4	87	79	110	90
1983/84	534.7	-	9.9	-	481.5	6.4921	3,126	6.7917	460.3	94	85	110	95
1984/85	534.7	-	9.9	-	481.5	6.8687	3,307	6.8470	483.0	100	91	110	100
1985/86	541.8	-	9.9	-	487.9	7.0009	3,416	6.7966	502.6	103	96	107	104
1986/87	541.8	-	13.8	-	466.9	7.0997	3,315	6.8361	484.9	100	100	100	100
1987/88	541.8	-	11.7	-	478.4	7.4759	3,577	6.9431	515.1	108	103	105	106
1988/89	541.8	-	12.6	-	473.3	7.5296	3,564	7.0299	507.0	108	106	102	105
1989/90	531.0	-	6.9	-	494.6	7.6979	3,807	7.0001	543.9	115	109	105	112
1990/91	530.1	-	10.2	-	476.1	7.8834	3,753	6.9458	540.4	113	113	101	111
1991/92	530.1	-	8.4	-	485.3	7.8956	3,832	6.9476	551.6	116	116	100	114
1992/93	530.1	-	9.4	-	480.1	7.8956	3,790	6.7896	558.3	114	118	97	115
1993/94	523.3	-	11.4	-	463.8	7.9715	3,698	6.6185	558.7	112	121	92	115
1994/95	523.3	-	10.5	-	468.3	7.9819	3,738	6.5741	568.6	113	123	92	117
1995/96	631.9	-	9.0	-	574.8	6.6102	3,800	6.5180	582.9	115	124	92	120
1996/97	631.9	-	9.7	-	570.4	6.6102	3,770	6.5322	577.2	114	125	91	119
1997/98	631.9	-	9.8	-	569.8	6.6847	3,809	6.5936	577.7	115	127	91	119
1998/99	631.9	-	11.6	-	558.6	6.6242	3,700	6.5596	564.1	112	129	87	116

Note 1: Intervention prices from 1984/85-1994/95 in agricultural ECUs. Deviation from financial ECUs increased from 1.033651 to 1.207509 (switch over factor). Switch over factors are incorporated in the agricultural exchange rates. Intervention price of 1995/96 = 1.207509 x Interv. Price 1994/95.

Note 2: Exchange rates are averages of the year, except the agricultural exchange rate of 1994/95, which is the average of 1/7/94 to 1/2/95, because of the switch over from agric. ECUs to financial ECUs per 1/2/95.

Figure B3

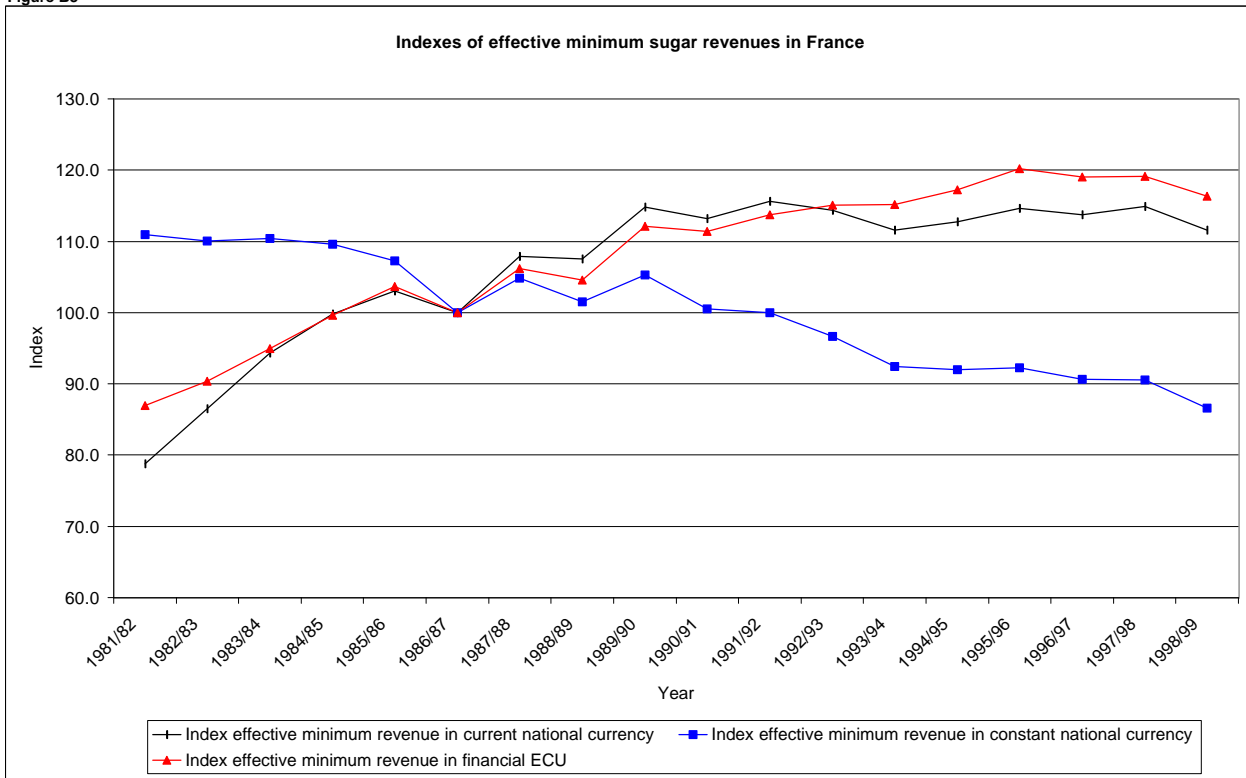


Table B4 Effective minimum sugar revenues per tonne in Germany

1 Year	2 Intervention Price (ECU/t)	3 Regional premium ECU/t	4 Product. levies (% of IP)	5 National support	6 Effective minimum revenue (in agr. ECU/t)	7 Agric. exchange rate	8 Effective minimum revenue (nat. currency)	9 Financial exchange rate	10 Effective minimum revenue (fin ECU/t)	11 Index column 8	12 GDP deflator	13 Index column 8 constant values	14 Index column 10
1981/82	469.5	-	9.1	-	427.0	2.6566	1,134	2.4583	461.4	103	87	118	89
1982/83	514.1	-	10.8	-	458.5	2.5752	1,181	2.3345	505.7	108	91	119	97
1983/84	534.7	-	10.8	-	476.8	2.5146	1,199	2.2615	530.2	109	93	117	102
1984/85	534.7	-	10.8	-	476.8	2.4504	1,168	2.2366	522.4	106	95	112	100
1985/86	541.8	-	10.8	-	483.2	2.3852	1,152	2.1873	526.9	105	98	108	101
1986/87	541.8	-	15.0	-	460.3	2.3852	1,098	2.1093	520.6	100	100	100	100
1987/88	541.8	-	12.7	-	472.8	2.3852	1,128	2.0730	544.0	103	102	101	105
1988/89	541.8	-	13.7	-	467.3	2.3611	1,103	2.0746	531.9	100	104	97	102
1989/90	531.0	-	7.4	-	491.8	2.3611	1,161	2.0657	562.1	106	107	99	108
1990/91	530.1	-	11.1	-	471.3	2.3556	1,110	2.0540	540.5	101	110	92	104
1991/92	530.1	-	9.2	-	481.6	2.3542	1,134	2.0491	553.3	103	116	89	106
1992/93	530.1	-	10.3	-	475.7	2.3542	1,120	1.9980	560.5	102	121	84	108
1993/94	523.3	-	12.4	-	458.6	2.3542	1,080	1.9398	556.6	98	125	79	107
1994/95	523.3	-	11.4	-	463.5	2.3542	1,091	1.9112	570.9	99	128	78	110
1995/96	631.9	-	9.8	-	569.9	1.9070	1,087	1.8934	574.0	99	130	76	110
1996/97	631.9	-	10.6	-	565.0	1.9384	1,095	1.9202	570.3	100	131	76	110
1997/98	631.9	-	10.7	-	564.4	1.9819	1,119	1.9602	570.6	102	132	77	110
1998/99	631.9	-	12.6	-	552.3	1.9700	1,088	1.9558	556.3	99	134	74	107

Note 1: Intervention prices from 1984/85-1994/95 in agricultural ECUs. Deviation from financial ECUs increased from 1.033651 to 1.207509 (switch over factor). Switch over factors are incorporated in the agricultural exchange rates. Intervention price of 1995/96 = 1.207509 x Interv. Price 1994/95.

Note 2: Exchange rates are averages of the year, except the agricultural exchange rate of 1994/95, which is the average of 1/7/94 to 1/2/95, because of the switch over from agric. ECUs to financial ECUs per 1/2/95.

Figure B4

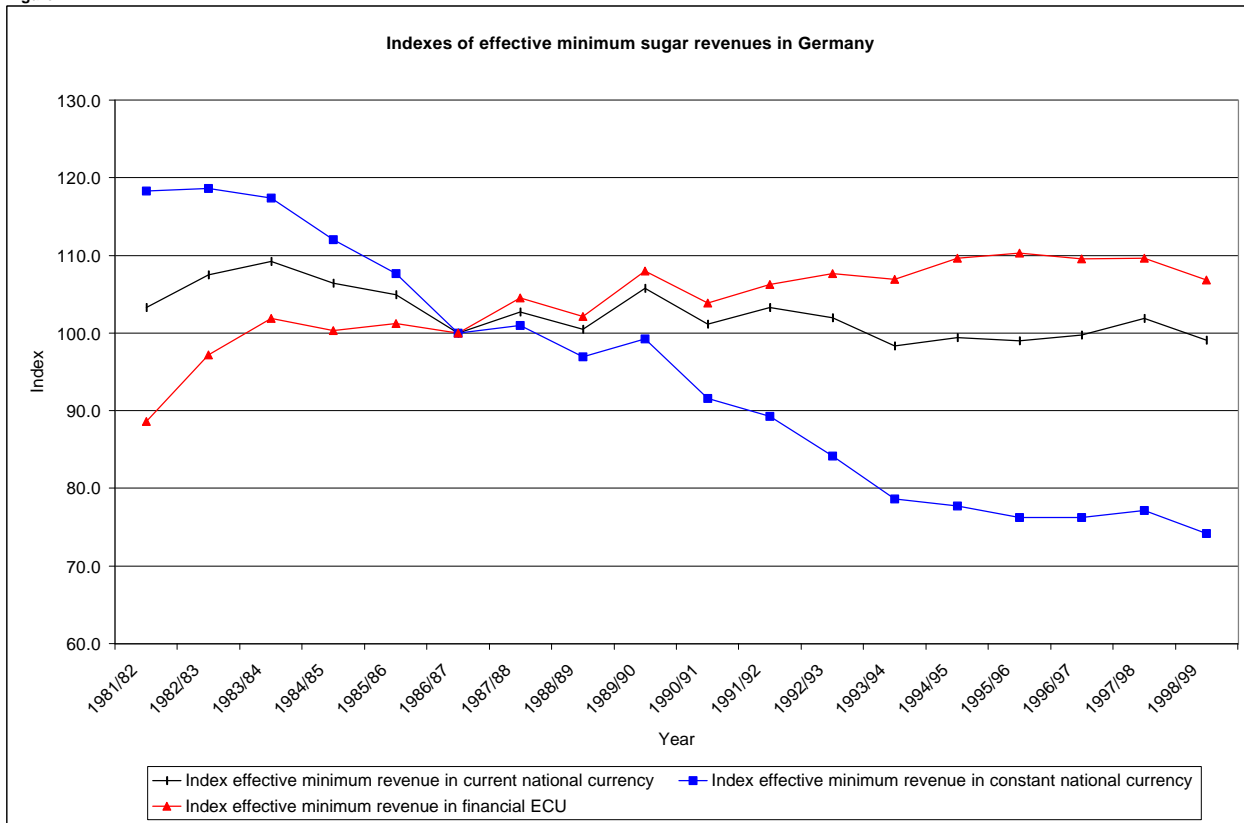


Table B5 Effective minimum sugar revenues per tonne in Greece

1 Year	2 Intervention Price (ECU/t)	3 Regional premium ECU/t	4 Product. levies (% of IP)	5 National support	6 Effective minimum revenue (in agr. ECU/t)	7 Agric. exchange rate	8 Effective minimum revenue (nat. currency)	9 Financial exchange rate	10 Effective minimum revenue (fin ECU/t)	11 Index column 8	12 GDP deflator	13 Index column 8 constant values	14 Index column 10
1981/82	469.5	-	4.7	n.d.	447.3	61.9455	27,709	63.3311	437.5	47	42	112	108
1982/83	514.1	-	5.4	n.d.	486.3	68.6249	33,372	70.5525	473.0	57	52	111	116
1983/84	534.7	-	5.4	n.d.	505.8	77.2479	39,070	81.3682	480.2	67	62	108	118
1984/85	534.7	-	5.4	n.d.	505.8	90.5281	45,787	94.0014	487.1	78	73	107	120
1985/86	541.8	-	5.4	n.d.	512.5	102.3450	52,451	118.2830	443.4	90	86	104	109
1986/87	541.8	-	7.5	n.d.	501.1	116.6730	58,464	143.9280	406.2	100	100	100	100
1987/88	541.8	-	6.4	n.d.	507.3	134.1740	68,071	158.5585	429.3	116	115	101	106
1988/89	541.8	-	6.9	n.d.	504.6	158.5620	80,007	169.3980	472.3	137	132	104	116
1989/90	531.0	-	4.1	n.d.	509.3	197.2770	100,478	182.9070	549.3	172	155	111	135
1990/91	530.1	-	5.5	n.d.	500.7	228.8650	114,601	203.6445	562.8	196	187	105	139
1991/92	530.1	-	4.8	n.d.	504.8	252.1210	127,283	226.0405	563.1	218	219	99	139
1992/93	530.1	-	5.2	n.d.	502.6	298.3040	149,923	248.3780	603.6	256	251	102	149
1993/94	523.3	-	6.2	n.d.	491.0	330.4420	162,239	271.4580	597.7	278	283	98	147
1994/95	523.3	-	5.7	n.d.	493.4	350.7230	173,050	290.5265	595.6	296	312	95	147
1995/96	631.9	-	5.0	-	600.2	308.7030	185,280	302.9465	611.6	317	340	93	151
1996/97	631.9	-	5.3	-	598.3	311.7880	186,541	307.1400	607.3	319	366	87	150
1997/98	631.9	-	5.4	-	598.1	322.6700	192,978	312.6265	617.3	330	385	86	152
1998/99	631.9	-	6.3	-	592.1	331.7750	196,441			336	401	84	

Note 1: Intervention prices from 1984/85-1994/95 in agricultural ECUs. Deviation from financial ECUs increased from 1.033651 to 1.207509 (switch over factor). Switch over factors are incorporated in the agricultural exchange rates. Intervention price of 1995/96 = 1.207509 x Interv. Price 1994/95.

Note 2: Exchange rates are averages of the year, except the agricultural exchange rate of 1994/95, which is the average of 1/7/94 to 1/2/95, because of the switch over from agric. ECUs to financial ECUs per 1/2/95.

Note 3: No detailed information on national support. See Court of Auditors 1991, par.2.62. No national support mentioned in Council Reg. 2038/1999 for years 95/96-99/00.

Figure B5

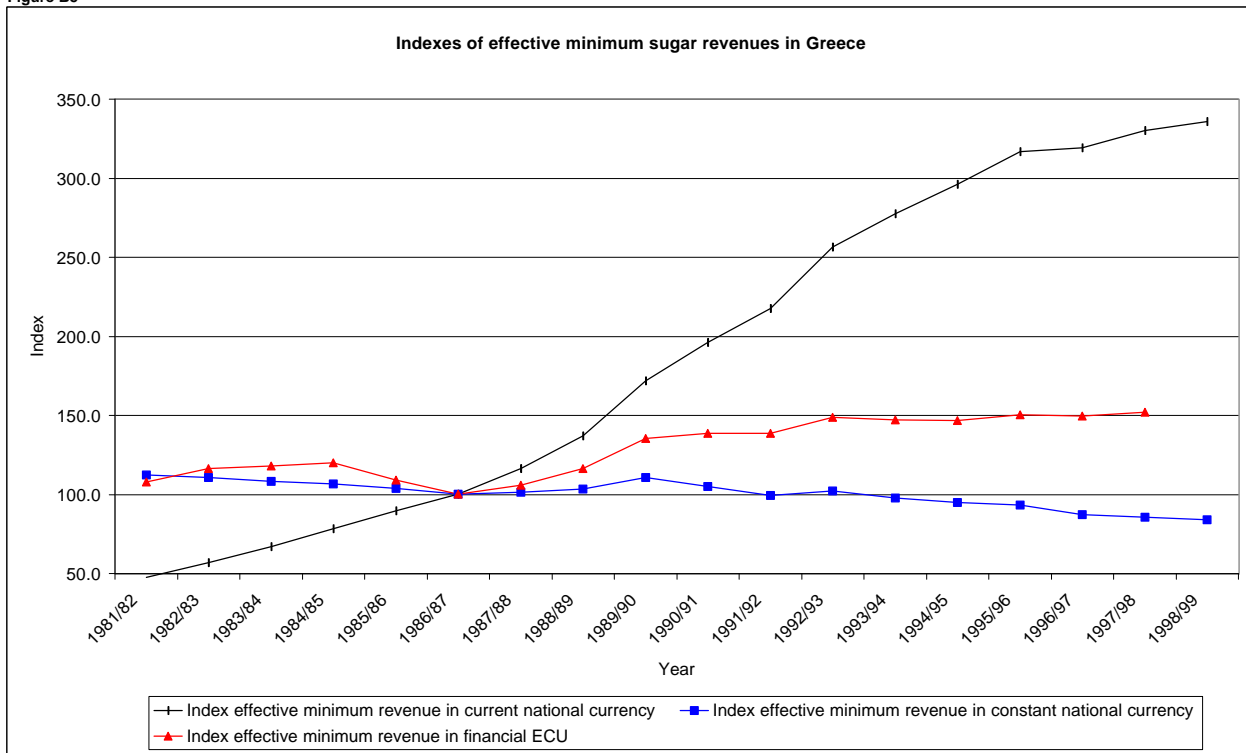


Table B6 Effective minimum sugar revenues per tonne in Ireland

1 Year	2 Intervention Price (ECU/t)	3 Regional premium ECU/t	4 Product. levies (% of IP)	5 National support	6 Effective minimum revenue (in agr. ECU/t)	7 Agric. exchange rate	8 Effective minimum revenue (nat. currency)	9 Financial exchange rate	10 Effective minimum revenue (fin ECU/t)	11 Index column 8	12 GDP deflator	13 Index column 8 constant values	14 Index column 10
1981/82	469.5	10.8	4.7	0	458.1	0.6852	314	0.6898	455.0	79	70	112	86
1982/83	514.1	11.9	5.4	0	498.2	0.6940	346	0.6992	494.5	87	79	109	93
1983/84	534.7	12.4	5.4	0	518.2	0.7257	376	0.7181	523.6	94	86	109	98
1984/85	534.7	12.4	5.4	0	518.2	0.7501	389	0.7214	538.8	97	91	107	101
1985/86	541.8	12.5	5.4	0	525.0	0.7501	394	0.7219	545.5	99	96	103	103
1986/87	541.8	12.5	7.5	0	513.6	0.7776	399	0.7506	532.1	100	100	100	100
1987/88	541.8	12.5	6.4	0	519.8	0.8314	432	0.7744	558.1	108	103	105	105
1988/89	541.8	12.5	6.9	0	517.1	0.8375	433	0.7759	558.2	108	107	101	105
1989/90	531.0	12.3	4.1	0	521.6	0.8568	447	0.7731	578.1	112	110	102	109
1990/91	530.1	12.1	5.5	0	512.8	0.8774	450	0.7694	584.8	113	111	102	110
1991/92	530.1	12.1	4.8	0	516.9	0.8788	454	0.7676	591.8	114	113	101	111
1992/93	530.1	12.1	5.2	0	514.7	0.9109	469	0.7717	607.5	117	116	101	114
1993/94	523.3	12.1	6.2	0	503.1	0.9764	491	0.7854	625.4	123	119	103	118
1994/95	523.3	12.1	5.7	0	505.5	0.9764	494	0.8022	615.3	124	120	103	116
1995/96	631.9	14.6	5.0	0	614.8	0.8295	510	0.8066	632.2	128	121	105	119
1996/97	631.9	14.6	5.3	0	612.9	0.7973	489	0.7752	630.3	122	123	99	118
1997/98	631.9	14.6	5.4	0	612.7	0.7757	475	0.7639	622.1	119	126	94	117
1998/99	631.9	14.6	6.3	0	606.7	0.7921	481	0.7876	610.1	120	129	93	115

Note 1: Intervention prices from 1984/85-1994/95 in agricultural ECUs. Deviation from financial ECUs increased from 1.033651 to 1.207509 (switch over factor). Switch over factors are incorporated in the agricultural exchange rates. Intervention price of 1995/96 = 1.207509 x Interv. Price 1994/95.

Note 2: Regional premiums 81/82-89/90 have to be verified. Assumed to be 2.31% of IP.

Note 3: Exchange rates are averages of the year, except the agricultural exchange rate of 1994/95, which is the average of 1/7/94 to 1/2/95, because of the switch over from agric. ECUs to financial ECUs per 1/2/95.

Figure B6

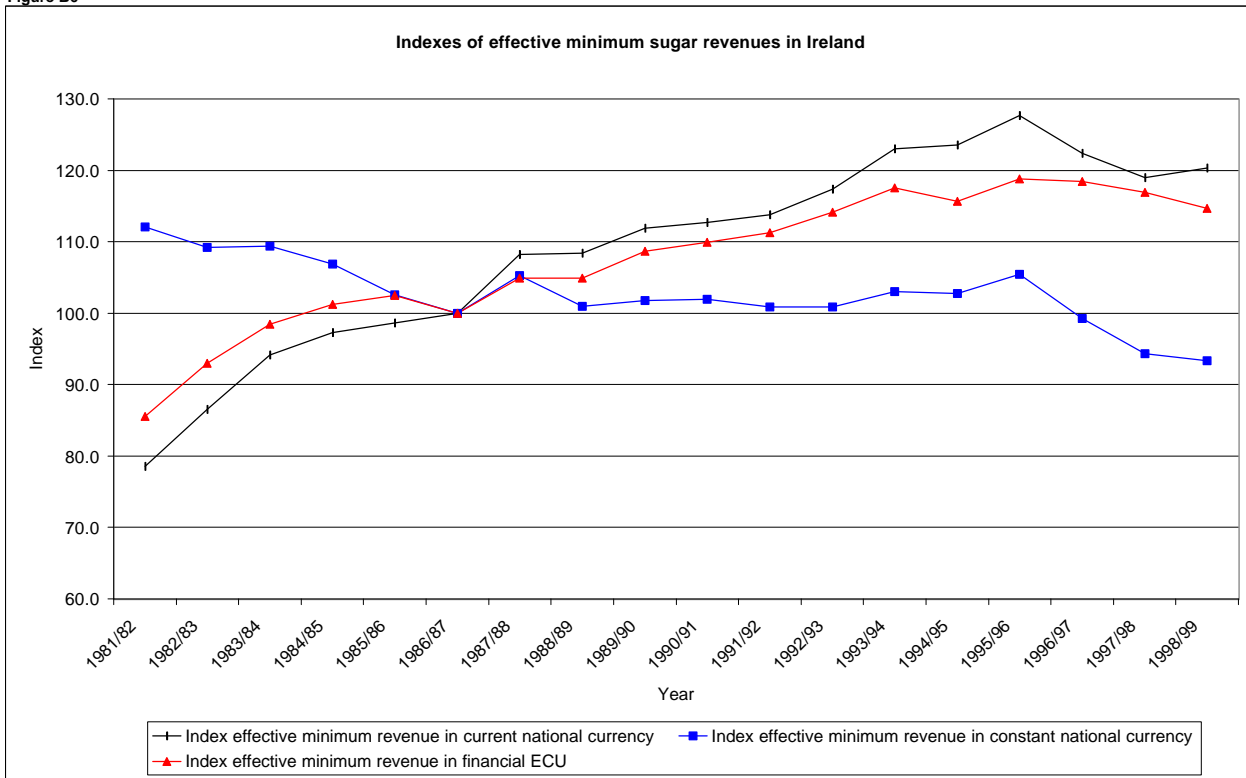


Table B7 Effective minimum sugar revenues per tonne in Italy

1 Year	2 Intervention Price (ECU/t)	3 Regional premium ECU/t	4 Product. levies (% of IP)	5 National support	6 Effective minimum revenue (in agr. ECU/t)	7 Agric. exchange rate	8 Effective minimum revenue (nat. currency)	9 Financial exchange rate	10 Effective minimum revenue (fin ECU/t)	11 Index column 8	12 GDP deflator	13 Index column 8 constant values	14 Index column 10
1981/82	469.5	17.4	6.7	111	566.2	1,227	694,744	1,283	541.7	71	59	119	81
1982/83	514.1	19	7.9	121.5	613.8	1,295	794,601	1,331	596.8	81	69	118	90
1983/84	534.7	19.8	7.9	126.4	638.5	1,341	856,182	1,362	628.6	87	78	112	94
1984/85	534.7	19.8	7.9	126.4	638.5	1,432	914,282	1,402	652.4	93	86	108	98
1985/86	541.8	20	7.9	128.1	646.9	1,482	958,709	1,446	662.8	98	94	105	100
1986/87	541.8	20	11.0	128.1	630.2	1,554	979,293	1,471	665.9	100	100	100	100
1987/88	541.8	20	9.3	128.1	639.3	1,613	1,031,246	1,498	688.3	105	106	99	103
1988/89	541.8	20	10.1	128.1	635.3	1,632	1,037,013	1,525	679.9	106	113	93	102
1989/90	531.0	19.6	5.6	113	633.7	1,695	1,073,953	1,518	707.6	110	121	90	106
1990/91	530.1	19.4	8.1	100.3	606.7	1,759	1,067,052	1,522	700.9	109	131	83	105
1991/92	530.1	19.4	6.8	87.7	601.1	1,761	1,058,787	1,538	688.5	108	139	78	103
1992/93	530.1	19.4	7.6	87.7	597.1	2,010	1,200,206	1,659	723.6	123	145	85	109
1993/94	523.3	19.4	9.1	86.6	581.9	2,232	1,298,827	1,841	705.6	133	151	88	106
1994/95	523.3	19.4	8.4	86.6	585.4	2,341	1,370,268	1,982	691.4	140	157	89	104
1995/96	631.9	23.4	7.3	81.5	691.0	2,137	1,476,289	2,041	723.4	151	165	91	109
1996/97	631.9	23.4	7.8	54.3	660.5	1,988	1,313,084	1,971	666.4	134	171	78	100
1997/98	631.9	23.4	7.8	38	643.8	1,974	1,270,721	1,930	658.5	130	176	74	99
1998/99	631.9	23.4	9.2	21.7	618.9	1,955	1,210,036	1,936	624.9	124	179	69	94

Note 1: Intervention prices from 1984/85-1994/95 in agricultural ECUs. Deviation from financial ECUs increased from 1.033651 to 1.207509 (switch over factor). Switch over factors are incorporated in the agricultural exchange rates. Intervention price of 1995/96 = 1.207509 x Interv. Price 1994/95.

Note 2: Regional premiums 81/82-89/90 have to be verified. Assumed to be 3.70 % of IP.

Note 3: National aid 1995/96 to 1999/2000 derived from Council Reg. 2038/1999.

Note 4: National aid in Central Italy from 1997/98 to 1999/2000 was respectively 43.5, 32.6 and 21.7 ECU/t.

Note 5: National aid in Southern Italy from 1996/97 to 1999/2000 was respectively 76.1, 70.6, 65.2, 59.8 and 54.3 ECU/t.

Note 6: National aid 1981/82-88/89 assumed to be 23.64 % of IP; in 89/90 90% of 23.64% of IP; in 90/91 80% of 23.64% of IP, and in 91/92 to 94/95 70% of 23.64% of IP. See Court of Auditors, 1999, par. 2.52.

Note 7: Late eighties 73% of national support for farmers (see Court of Auditors 1999, par.2.49). Since 1995/96 all national support for farmers, except in Southern Italy (see Council Reg.2038/1999).

Note 8: Exchange rates are averages of the year, except the agricultural exchange rate of 1994/95, which is the average of 1/7/94 to 1/2/95, because of the switch over from agric. ECUs to financial ECUs per 1/2/95.

Figure B7

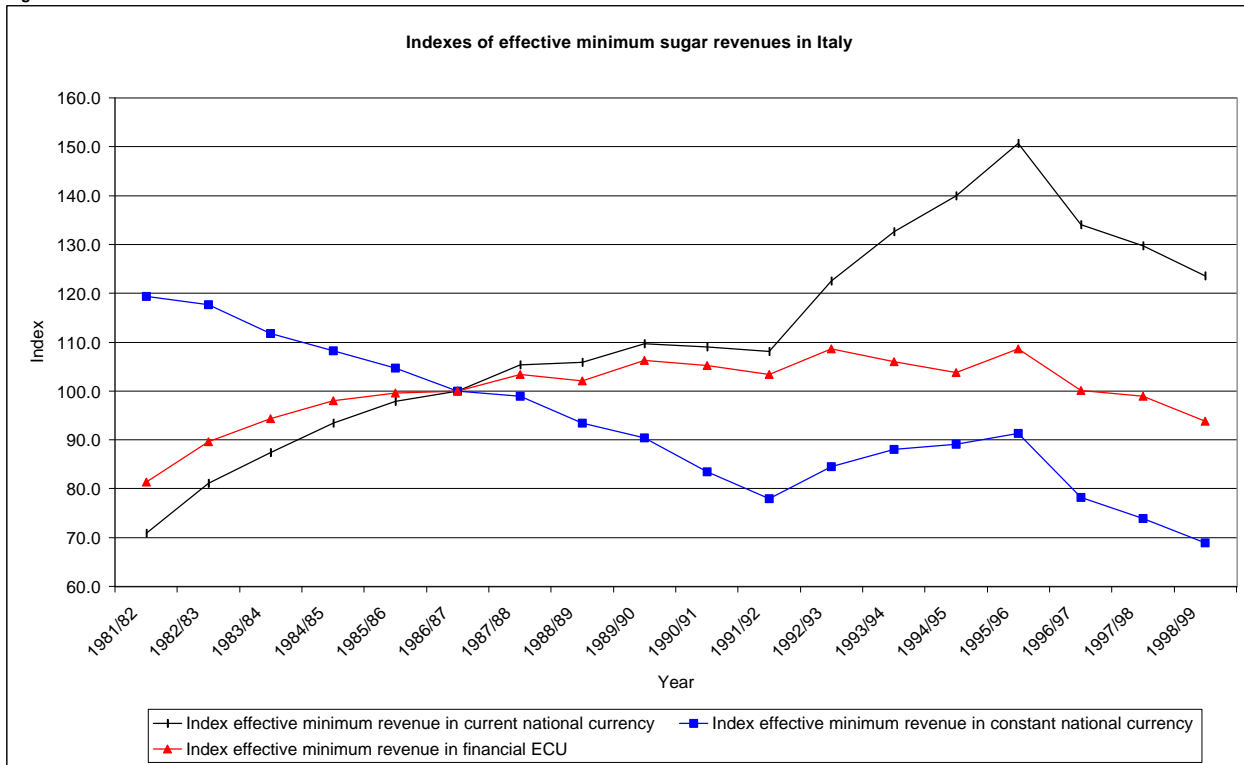


Table B8 Effective minimum sugar revenues per tonne in the Netherlands

1 Year	2 Intervention Price (ECU/t)	3 Regional premium ECU/t	4 Product. levies (% of IP)	5 National support	6 Effective minimum revenue (in agr. ECU/t)	7 Agric. exchange rate	8 Effective minimum revenue (nat. currency)	9 Financial exchange rate	10 Effective minimum revenue (fin ECU/t)	11 Index column 8	12 GDP deflator	13 Index column 8 constant values	14 Index column 10
1981/82	469.5	-	8.3	-	430.7	2.8132	1,212	2.7131	446.6	96	93	104	84
1982/83	514.1	-	9.8	-	463.6	2.7556	1,277	2.5828	494.6	102	96	106	94
1983/84	534.7	-	9.8	-	482.2	2.7098	1,307	2.5318	516.1	104	98	106	98
1984/85	534.7	-	9.8	-	482.2	2.6987	1,301	2.5216	516.0	103	99	104	98
1985/86	541.8	-	9.8	-	488.6	2.6875	1,313	2.4665	532.3	104	100	104	101
1986/87	541.8	-	13.6	-	467.8	2.6875	1,257	2.3779	528.8	100	100	100	100
1987/88	541.8	-	11.6	-	479.2	2.6739	1,281	2.3347	548.8	102	100	102	104
1988/89	541.8	-	12.5	-	474.2	2.6470	1,255	2.3365	537.2	100	101	98	102
1989/90	531.0	-	6.8	-	495.0	2.6379	1,306	2.3284	560.8	104	103	101	106
1990/91	530.1	-	10.1	-	476.8	2.6485	1,263	2.3148	545.5	100	106	95	103
1991/92	530.1	-	8.3	-	485.9	2.6526	1,289	2.3101	557.9	103	108	95	106
1992/93	530.1	-	9.3	-	480.7	2.6526	1,275	2.2515	566.3	101	111	92	107
1993/94	523.3	-	11.2	-	464.6	2.6526	1,232	2.1803	565.2	98	113	87	107
1994/95	523.3	-	10.4	-	469.0	2.6526	1,244	2.1341	582.9	99	115	86	110
1995/96	631.9	-	8.9	-	575.5	2.1404	1,232	2.1170	581.8	98	117	84	110
1996/97	631.9	-	9.6	-	571.1	2.1766	1,243	2.1651	574.1	99	119	83	109
1997/98	631.9	-	9.7	-	570.6	2.2323	1,274	2.2123	575.8	101	121	83	109
1998/99	631.9	-	11.4	-	559.9	2.2200	1,243	2.2037	564.0	99	124	80	107

Note 1: Intervention prices from 1984/85-1994/95 in agricultural ECUs. Deviation from financial ECUs increased from 1.033651 to 1.207509 (switch over factor). Switch over factors are incorporated in the agricultural exchange rates. Intervention price of 1995/96 = 1.207509 x Interv. Price 1994/95.

Note 2: Exchange rates are averages of the year, except the agricultural exchange rate of 1994/95, which is the average of 1/7/94 to 1/2/95, because of the switch over from agric. ECUs to financial ECUs per 1/2/95.

Figure B8

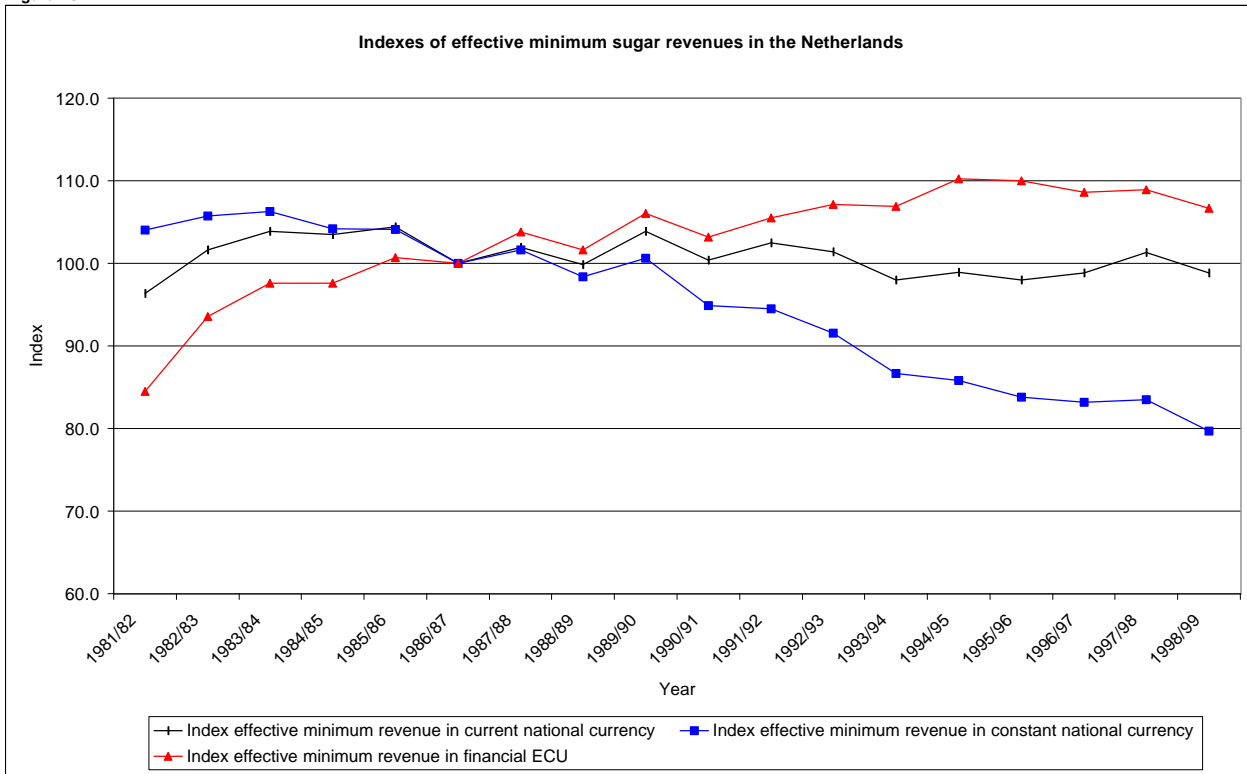


Table B9 Effective minimum sugar revenues per tonne in the United Kingdom

1 Year	2 Intervention Price (ECU/t)	3 Regional premium ECU/t	4 Product. levies (% of IP)	5 National support	6 Effective minimum revenue (in agr. ECU/t)	7 Agric. exchange rate	8 Effective minimum revenue (nat. currency)	9 Financial exchange rate	10 Effective minimum revenue (fin ECU/t)	11 Index column 8	12 GDP deflator	13 Index column 8 constant values	14 Index column 10
1981/82	469.5	10.8	4.7	0	458.1	0.6187	283	0.5573	508.5	88	78	113	108
1982/83	514.1	11.9	5.4	0	498.2	0.6187	308	0.5722	538.6	96	83	115	114
1983/84	534.7	12.4	5.4	0	518.2	0.6187	321	0.5853	547.7	100	87	114	116
1984/85	534.7	12.4	5.4	0	518.2	0.6187	321	0.5860	547.0	100	92	108	116
1985/86	541.8	12.5	5.4	0	525.0	0.6187	325	0.6180	525.6	101	96	105	112
1986/87	541.8	12.5	7.5	0	513.6	0.6270	322	0.6836	471.1	100	100	100	100
1987/88	541.8	12.5	6.4	0	519.8	0.6561	341	0.6988	488.1	106	106	100	104
1988/89	541.8	12.5	6.9	0	517.1	0.6655	344	0.6665	516.3	107	113	95	110
1989/90	531.0	12.3	4.1	0	521.6	0.7028	367	0.6823	537.2	114	120	95	114
1990/91	530.1	12.1	5.5	0	512.8	0.7796	400	0.7048	567.2	124	128	97	120
1991/92	530.1	12.1	4.8	0	516.9	0.7954	411	0.7037	584.3	128	135	95	124
1992/93	530.1	12.1	5.2	0	514.7	0.8952	461	0.7470	616.9	143	140	102	131
1993/94	523.3	12.1	6.2	0	503.1	0.9228	464	0.7763	598.1	144	144	100	127
1994/95	523.3	12.1	5.7	0	505.5	0.9536	482	0.7871	612.4	150	147	102	130
1995/96	631.9	14.6	5.0	0	614.8	0.8508	523	0.8189	638.7	162	151	108	136
1996/97	631.9	14.6	5.3	0	612.9	0.7914	485	0.7754	625.5	151	155	97	133
1997/98	631.9	14.6	5.4	0	612.7	0.6963	427	0.6970	612.0	132	159	84	130
1998/99	631.9	14.6	6.3	0	606.7	0.6800	413			128	162	79	

Note 1: Intervention prices from 1984/85-1994/95 in agricultural ECUs. Deviation from financial ECUs increased from 1.033651 to 1.207509 (switch over factor). Switch over factors are incorporated in the agricultural exchange rates. Intervention price of 1995/96 = 1.207509 x Interv. Price 1994/95.

Note 2: Regional premiums 81/82-89/90 have to be verified. Assumed to be 2.31% of IP.

Note 3: Exchange rates are averages of the year, except the agricultural exchange rate of 1994/95, which is the average of 1/7/94 to 1/2/95, because of the switch over from agric. ECUs to financial ECUs per 1/2/95.

Figure B9

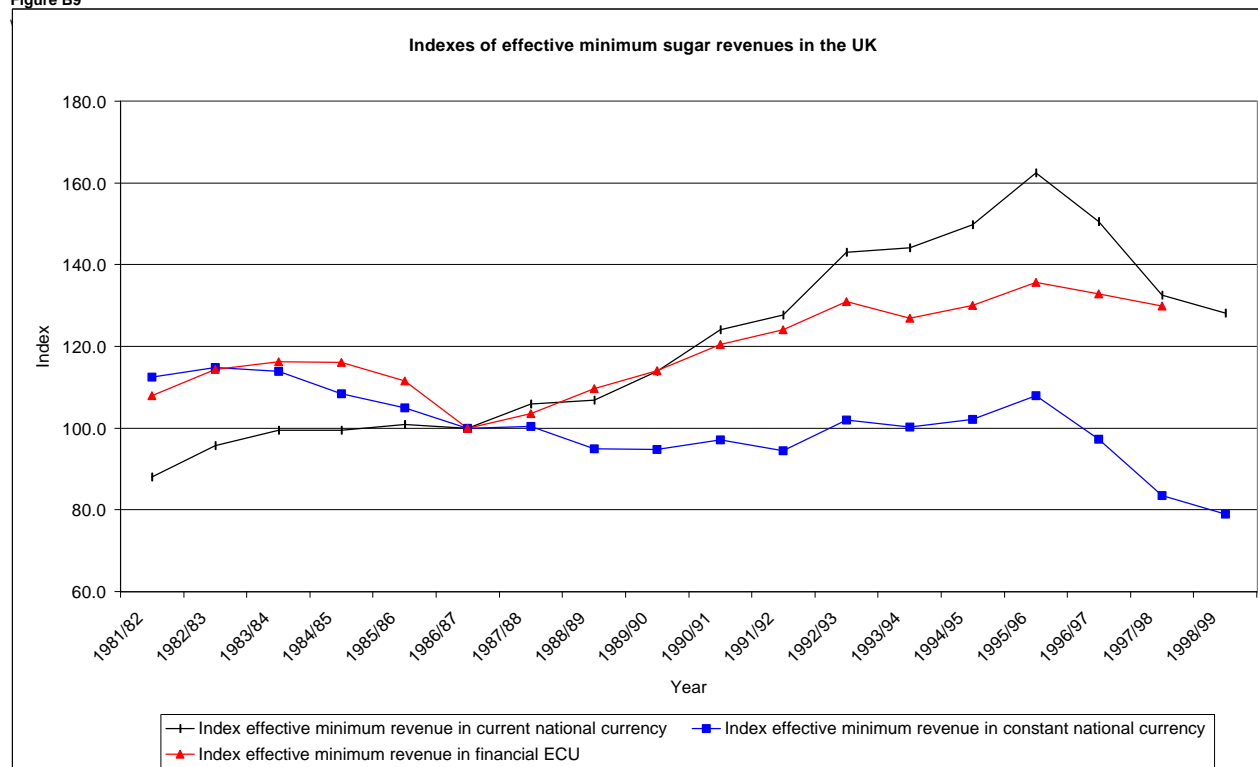


Table B10 **Effective minimum sugar revenues per tonne in Portugal**

1 Year	2 Intervention Price (ECU/t)	3 Regional premium ECU/t	4 Product. levies (% of IP)	5 National support	6 Effective minimum revenue (in agr. ECU/t)	7 Agric. exchange rate	8 Effective minimum revenue (nat. currency)	9 Financial exchange rate	10 Effective minimum revenue (fin ECU/t)	11 Index column 8	12 GDP deflator	13 Index column 8 constant values	14 Index column 10
1981/82													
1982/83													
1983/84													
1984/85													
1985/86													
1986/87	541.8	12.5	7.5	0	513.6	151.8120	77,970	156.2590	499.0	100	100	100	100
1987/88	541.8	12.5	6.4	0	519.8	171.7250	89,269	164.1600	543.8	114	111	103	109
1988/89	541.8	12.5	6.9	0	517.1	186.9360	96,661	170.0815	568.3	124	124	100	114
1989/90	531.0	12.3	4.1	0	521.6	195.6370	102,049	175.4135	581.8	131	140	94	117
1990/91	530.1	12.1	5.5	0	512.8	208.1800	106,763	179.1390	596.0	137	157	87	119
1991/92	530.1	12.1	4.8	0	516.9	208.6760	107,875	177.4590	607.9	138	174	79	122
1992/93	530.1	12.1	5.2	0	514.7	210.4960	108,339	178.1030	608.3	139	189	74	122
1993/94	523.3	12.1	6.2	0	503.1	236.0740	118,763	188.9560	628.5	152	200	76	126
1994/95	523.3	12.1	5.7	0	505.5	239.3310	120,984	196.6197	615.3	155	211	73	123
1995/96	631.9	14.6	5.0	0	614.8	198.2020	121,853	196.0906	621.4	156	219	71	125
1996/97	631.9	14.6	5.3	0	612.9	198.2020	121,477	196.4437	618.4	156	224	70	124
1997/98	631.9	14.6	5.4	0	612.7	201.3010	123,330	199.2038	619.1	158	229	69	124
1998/99	631.9	14.6	6.3	0	606.7	201.8440	122,457	200.482	610.8	157	236	67	122

Note 1: Intervention prices from 1984/85-1994/95 in agricultural ECUs. Deviation from financial ECUs increased from 1.033651 to 1.207509 (switch over factor). Switch over factors are incorporated in the agricultural exchange rates. Intervention price of 1995/96 = 1.207509 x Interv. Price 1994/95.

Note 2: Regional premiums 86/87-94/95 have to be verified. Assumed to be 2.31% of IP.

Note 3: According to Council Reg. 2038/1999 no national support for period 95/96-99/00. For other years no information available. See also Court of Auditors, 1991, par. 2.57-2.59.

Note 4: Exchange rates are averages of the year, except the agricultural exchange rate of 1994/95, which is the average of 1/7/94 to 1/2/95, because of the switch over from agric. ECUs to financial ECUs per 1/2/95.

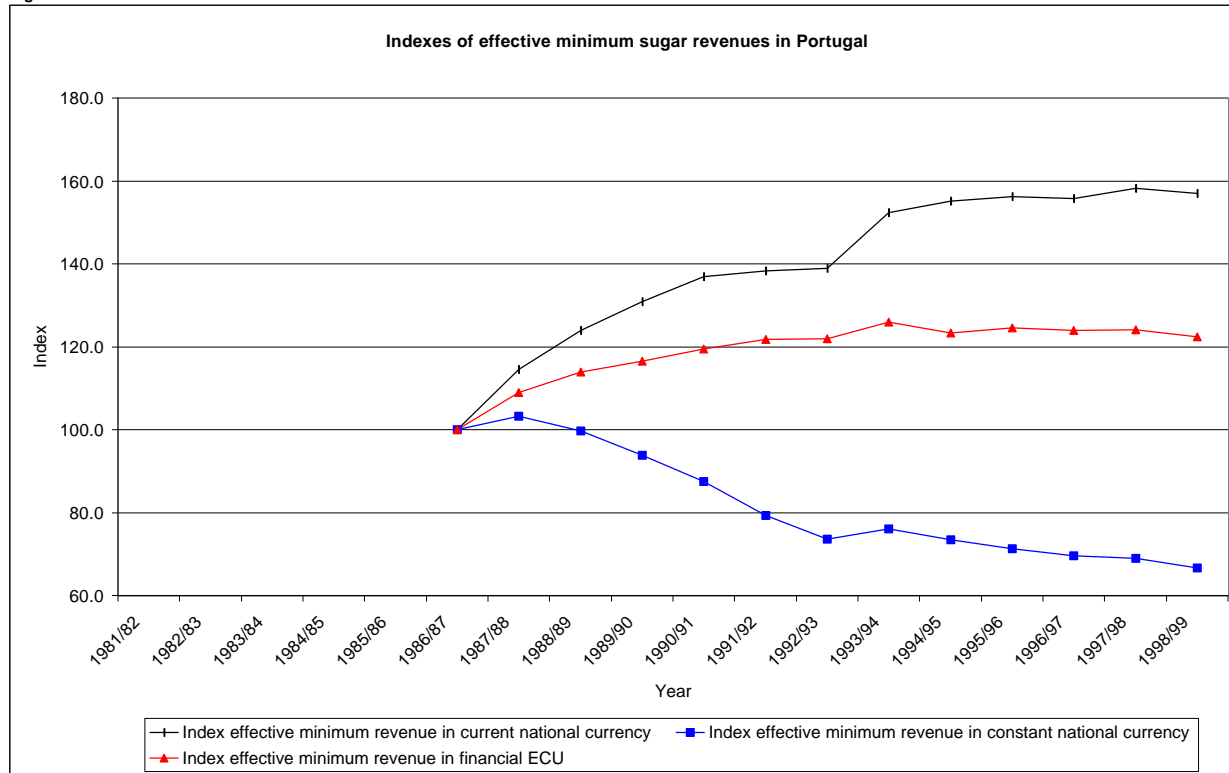
Figure B10


Table B11 Effective minimum sugar revenues per tonne in Spain

1 Year	2 Intervention Price (ECU/t)	3 Regional premium ECU/t	4 Product. levies (% of IP)	5 National support	6 Effective minimum revenue (in agr. ECU/t)	7 Agric. exchange rate	8 Effective minimum revenue (nat. currency)	9 Financial exchange rate	10 Effective minimum revenue (fin ECU/t)	11 Index column 8	12 GDP deflator	13 Index column 8 constant values	14 Index column 10
1981/82													
1982/83													
1983/84													
1984/85													
1985/86													
1986/87	541.8	14.5	4.9	128.1	658.1	145.7960	95,943	140.4355	683.2	100	100	100	100
1987/88	541.8	14.5	4.1	128.1	662.1	154.2130	102,104	140.6315	726.0	106	106	101	106
1988/89	541.8	14.5	4.4	128.1	660.3	154.2130	101,829	135.3145	752.5	106	113	94	110
1989/90	531.0	14.2	2.9	113	642.7	154.2130	99,115	130.8990	757.2	103	121	86	111
1990/91	530.1	14.2	3.6	100.3	625.6	153.6780	96,141	128.9755	745.4	100	129	77	109
1991/92	530.1	14.2	3.2	87.7	615.0	153.4980	94,394	128.9480	732.0	98	138	71	107
1992/93	530.1	14.2	3.4	87.7	614.0	161.9345	99,421	136.7125	727.2	104	146	71	106
1993/94	523.3	14	4.0	86.6	603.0	190.6632	114,967	151.5425	758.6	120	152	79	111
1994/95	523.3	14	3.7	86.6	604.6	193.6830	117,093	160.4795	729.6	122	159	77	107
1995/96	631.9	16.9	3.3	86.7	714.5	165.5100	118,252	161.0815	734.1	123	165	75	107
1996/97	631.9	16.9	3.5	54.3	681.2	165.3280	112,627	162.1730	694.5	117	170	69	102
1997/98	631.9	16.9	3.5	43.5	670.3	167.4120	112,222	165.6960	677.3	117	174	67	99
1998/99	631.9	16.9	4.1	32.6	655.5	167.3690	109,709	166.386	659.4	114	178	64	97

Note 1: Intervention prices from 1984/85-1994/95 in agricultural ECUs. Deviation from financial ECUs increased from 1.033651 to 1.207509 (switch over factor). Switch over factors are incorporated in the agricultural exchange rates. Intervention price of 1995/96 = 1.207509 x Interv. Price 1994/95.

Note 2: Regional premiums 86/87-94/95 have to be verified. Assumed to be 2.67% of IP. Report Court of Auditors (1991, par. 2.22) mentions that regional premium was 15.9% in 1996/97, which had to be reduced in 7 years to a normal level.

Note 3: National support 95/96 - 99/2000 see Council Reg. 2038/1999. Support entirely for beet growers.

Note 4: National support 1986/87-88/89 assumed to be 23.64 % of IP; in 89/90 90% of 23.64% of IP; in 90/91 80% of 23.64% of IP, and in 91/92 to 94/95 70% of 23.64% of IP. See Court of Auditors, 1991, par. 2.56 (Spain) and 2.52 (Italy).

Note 5: Spain is allowed to support sugar producing undertakings with ECU 45.65 million during 93/94 till 96/97. See Council Reg. 2038/1999, art.53.6. That is not included in this table.

Note 6: Exchange rates are averages of the year, except the agricultural exchange rate of 1994/95, which is the average of 1/7/94 to 1/2/95, because of the switch over from agric. ECUs to financial ECUs per 1/2/95.

Figure B11

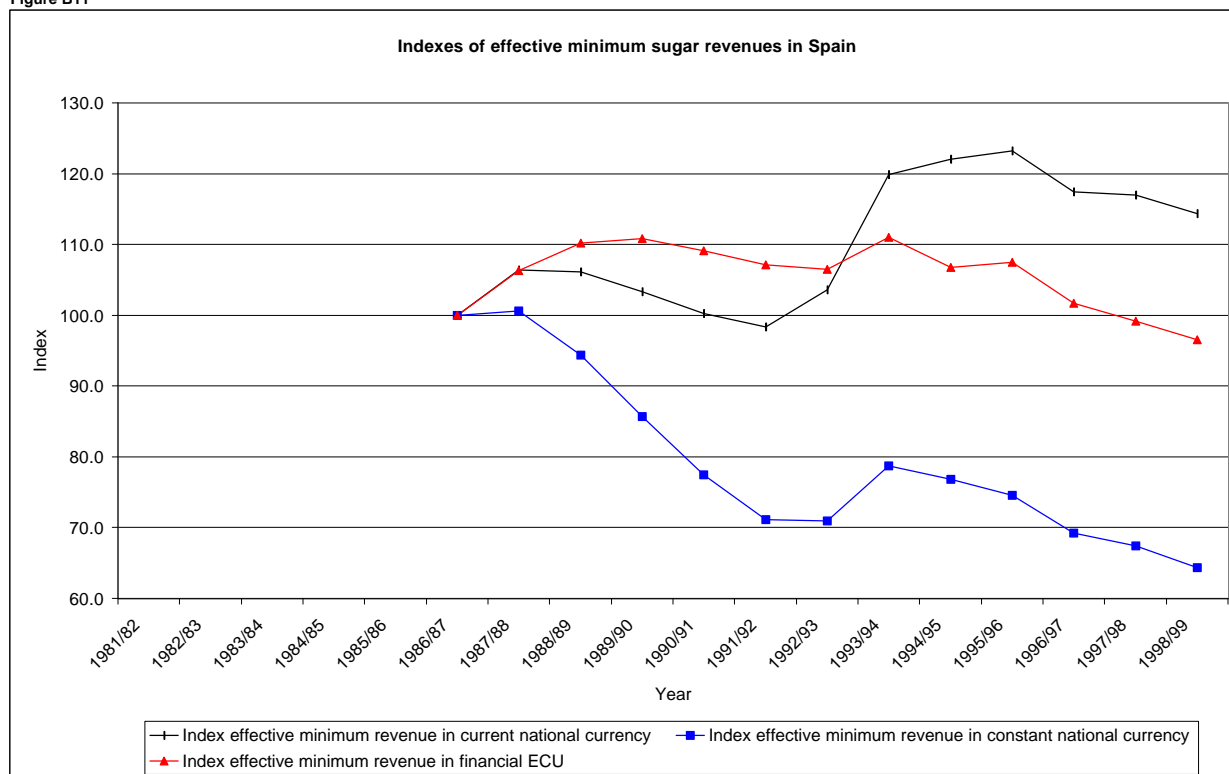


Table B12 Effective minimum sugar revenues per tonne in Austria

1 Year	2 Intervention Price (ECU/t)	3 Regional premium ECU/t	4 Product. levies (% of IP)	5 National support	6 Effective minimum revenue (in agr. ECU/t)	7 Agric. exchange rate	8 Effective minimum revenue (nat. currency)	9 Financial exchange rate	10 Effective minimum revenue (fin ECU/t)	11 Index column 8	12 GDP deflator	13 Index column 8 constant values	14 Index column 10
1986/87											100		
1987/88											102		
1988/89											104		
1989/90											107		
1990/91											111		
1991/92											115		
1992/93											120		
1993/94											123		
1994/95											126		
1995/96	631.9	0	8.3	0	579.6	13.4148	7,775	13.2813	585.4	100	129	100	100
1996/97	631.9	0	8.9	0	575.6	13.6405	7,852	13.5679	578.7	101	131	99	99
1997/98	631.9	0	9.0	0	575.1	13.9442	8,020	13.7981	581.2	103	133	100	99
1998/99	631.9	0	10.6	0	564.9	13.8598	7,830	13.7603	569.0	101	135	96	97

Note 1: Exchange rates are averages of the year.

Table B13 Effective minimum sugar revenues per tonne in Finland

1 Year	2 Intervention Price (ECU/t)	3 Regional premium ECU/t	4 Product. levies (% of IP)	5 National support	6 Effective minimum revenue (in agr. ECU/t)	7 Agric. exchange rate	8 Effective minimum revenue (nat. currency)	9 Financial exchange rate	10 Effective minimum revenue (fin ECU/t)	11 Index column 8	12 GDP deflator	13 Index column 8 constant values	14 Index column 10
1986/87					0.0						100		
1987/88					0.0						106		
1988/89					0.0						113		
1989/90					0.0						119		
1990/91					0.0						124		
1991/92					0.0						126		
1992/93					0.0						128		
1993/94					0.0						131		
1994/95					0.0						133		
1995/96	631.9	14.6	5.0	0	614.8	5.9077	3,632	5.7013	637.1	100	136	100	100
1996/97	631.9	14.6	5.3	0	612.9	6.0281	3,695	5.7860	638.5	102	137	100	100
1997/98	631.9	14.6	5.4	0	612.7	6.0281	3,693	5.9074	625.2	102	140	99	98
1998/99	631.9	14.6	6.3	0	606.7	5.9873	3,632	5.9457	610.9	100	142	95	96

Note 1: Regional premium 2.31% of IP.

Note 2: Exchange rates are averages of the year.

Table B14 Effective minimum sugar revenues per tonne in Sweden

1 Year	2 Intervention Price (ECU/t)	3 Regional premium ECU/t	4 Product. levies (% of IP)	5 National support	6 Effective minimum revenue (in agr. ECU/t)	7 Agric. exchange rate	8 Effective minimum revenue (nat. currency)	9 Financial exchange rate	10 Effective minimum revenue (fin ECU/t)	11 Index column 8	12 GDP deflator	13 Index column 8 constant values	14 Index column 10
1986/87											100		
1987/88											106		
1988/89											113		
1989/90											123		
1990/91											133		
1991/92											139		
1992/93											141		
1993/94											145		
1994/95											149		
1995/96	631.9	0	5.0	0	600.2	9.2767	5,568	8.9687	620.8	100	153	100	100
1996/97	631.9	0	5.3	0	598.3	8.7170	5,215	8.5922	607.0	94	154	93	98
1997/98	631.9	0	5.4	0	598.1	8.7748	5,248	8.6368	607.6	94	157	92	98
1998/99	631.9	0	6.3	0	592.1	9.0192	5,340			96	160	92	

Note 1: Exchange rates are averages of the year.