



BEEF & VEAL MARKET SITUATION



Meat Market Observatory
06 March 2018

LIVESTOCK

EU EVOLUTION TOTAL BOVINE

JUNE SURVEY



May/Jun 1000 Hd	TOT LIVESTOCK				%Var 2017 2016	BOVINE < 1 Year				%Var 2017 2016	BOVINE 1-2 Year				%Var 2017 2016	BOVINE > 2 Year				%Var 2017 2016
	2014	2015	2016	2017		2014	2015	2016	2017		2014	2015	2016	2017		2014	2015	2016	2017	
BE	2 521	2 531	2 555	2 454	-3.9%	734	744	750	717	-4.5%	506	504	512	500	-2.2%	1 282	1 283	1 293	1 237	-4.3%
BG																				
CZ																				
DK	1 585	1 568	1 583	1 565	-1.1%	528	524	547	527	-3.7%	318	316	307	311	+1.3%	739	728	730	727	-0.4%
DE	12 702	12 653	12 563	12 366	-1.6%	3 874	3 846	3 805	3 723	-2.2%	3 004	3 002	2 983	2 948	-1.2%	5 824	5 805	5 775	5 694	-1.4%
EE																				
IE	6 926	6 964	7 221	7 364	+2.0%	1 878	2 042	2 126	2 131	+0.2%	1 767	1 705	1 853	1 914	+3.3%	3 280	3 216	3 242	3 319	+2.4%
EL																				
ES	6 008	6 234	6 451	6 588	+2.1%	2 172	2 281	2 413	2 480	+2.7%	795	898	896	927	+3.5%	3 041	3 055	3 141	3 181	+1.3%
FR	19 286	19 463	19 559	19 433	-0.6%	5 530	5 603	5 638	5 542	-1.7%	3 476	3 540	3 561	3 523	-1.1%	10 280	10 319	10 362	10 367	+0.1%
HR																				
IT	6 197	6 146	6 183	6 118	-1.0%	1 703	1 670	1 702	1 723	+1.2%	1 445	1 370	1 502	1 472	-2.0%	3 049	3 107	2 979	2 923	-1.9%
CY																				
LV																				
LT																				
LU																				
HU																				
MT																				
NL	4 068	4 134	4 245	4 093	-3.6%	1 643	1 624	1 692	1 602	-5.3%	634	672	630	600	-4.7%	1 791	1 838	1 923	1 892	-1.7%
AT	1 937	1 950	1 933	1 938	+0.3%	613	622	605	620	+2.4%	424	437	441	431	-2.3%	901	891	887	888	+0.2%
PL	5 920	5 961	5 939	6 143	+3.4%	1 609	1 669	1 728	1 721	-0.4%	1 433	1 529	1 576	1 701	+7.9%	2 879	2 763	2 635	2 721	+3.3%
PT			1 664	1 722	+3.5%			521	537	+3.0%			264	281	+6.6%			879	904	+2.8%
RO	2 069	2 078	2 081	2 012	-3.3%	479	477	481	454	-5.5%	236	235	240	229	-4.6%	1 354	1 366	1 360	1 329	-2.3%
SI																				
SK																				
FI																				
SE	1 493	1 476	1 489	1 501	+0.8%	472	466	475	472	-0.6%	370	372	375	385	+2.6%	651	638	639	644	+0.9%
UK	9 837	9 919	10 033	10 004	-0.3%	2 801	2 912	2 989	2 940	-1.6%	2 384	2 380	2 474	2 516	+1.7%	4 652	4 626	4 569	4 548	-0.5%
EU	80 550	81 076	83 499	83 301	-0.2%	24 035	24 481	25 473	25 189	-1.1%	16 792	16 959	17 613	17 739	+0.7%	39 722	39 635	40 414	40 373	-0.1%

Source : EStat Newcronos

EU %Var is calculated considering only countries available in 2016 AND 2017

06 March 2018

Agriculture
and Rural
Development

LIVESTOCK

EU EVOLUTION TOTAL BOVINE

JUNE SURVEY



European
Commission

May/Jun 1000 Hd	TOTAL COWS				%Var 2017 2016	DAIRY COWS				%Var 2017 2016	OTHER COWS				%Var 2017 2016
	2014	2015	2016	2017		2014	2015	2016	2017		2014	2015	2016	2017	
BE	971	987	1 005	970	-3.5%	522	524	536	521	-2.7%	449	463	469	449	-4.3%
BG															
CZ															
DK	664	661	669	665	-0.6%	563	561	572	570	-0.3%	101	99	97	95	-2.1%
DE	4 981	4 969	4 957	4 885	-1.5%	4 311	4 287	4 272	4 214	-1.4%	670	682	685	670	-2.1%
EE															
IE	2 355	2 372	2 502	2 514	+0.5%	1 226	1 296	1 398	1 433	+2.5%	1 129	1 076	1 104	1 081	-2.1%
EL															
ES	2 716	2 678	2 801	2 832	+1.1%	876	853	827	825	-0.3%	1 840	1 825	1 973	2 007	+1.7%
FR	7 759	7 809	7 838	7 811	-0.3%	3 615	3 606	3 576	3 552	-0.7%	4 144	4 203	4 263	4 259	-0.1%
HR															
IT	2 382	2 375	2 245	2 187	-2.6%	2 053	2 061	1 948	1 907	-2.1%	329	314	297	280	-5.9%
CY															
LV															
LT															
LU															
HU															
MT															
NL	1 655	1 702	1 811	1 751	-3.3%	1 572	1 622	1 743	1 693	-2.9%	82	80	68	59	-13.8%
AT	770	762	755	755	+0.0%	534	540	536	540	+0.7%	236	222	218	215	-1.6%
PL	2 479	2 444	2 332	2 374	+1.8%	2 310	2 279	2 146	2 154	+0.4%	169	165	186	220	+18.3%
PT			736	747	+1.5%			246	244	-0.9%			490	504	+2.7%
RO	1 224	1 233	1 228	1 199	-2.3%	1 207	1 216	1 216	1 184	-2.6%	17	17	12	15	+28.3%
SI															
SK															
FI															
SE	531	523	524	530	+1.0%	344	338	331	322	-2.7%	186	184	194	208	+7.2%
UK	3 411	3 472	3 493	3 481	-0.3%	1 841	1 895	1 897	1 891	-0.3%	1 569	1 576	1 596	1 589	-0.4%
EU	31 899	31 987	32 895	32 700	-0.6%	20 976	21 078	21 243	21 049	-0.9%	10 922	10 907	11 652	11 650	-0.0%

Source : EStat Newcrons

EU %Var is calculated considering only countries available in 2016 AND 2017

06 March 2018

Agriculture
and Rural
Development

LIVESTOCK

EU EVOLUTION TOTAL BOVINE

DECEMBER SURVEY



European
Commission

Dec 1000 Hd	TOTAL LIVESTOCK				%Var 2017 2016	BOVINE < 1 Year				%Var 2017 2016	BOVINE 1-2 Year				%Var 2017 2016	BOVINE > 2 Year				%Var 2017 2016
	2014	2015	2016	2017		2014	2015	2016	2017		2014	2015	2016	2017		2014	2015	2016	2017	
BE	2 477	2 503	2 501	2 386	-4.6%	745	749	748	700	-6.5%	490	493	492	484	-1.6%	1 243	1 261	1 261	1 202	-4.7%
BG	562	561	570	552	-3.1%	121	109	120	110	-8.4%	65	64	63	57	-10.2%	376	388	387	386	-0.4%
CZ	1 373	1 366	1 340	1 366	+2.0%	413	403	397	407	+2.4%	311	309	295	299	+1.4%	649	654	648	660	+2.0%
DK	1 553	1 566	1 554	1 558	+0.3%	534	538	540	541	+0.2%	307	302	298	294	-1.3%	713	726	715	723	+1.1%
DE	12 742	12 635	12 467	12 281	-1.5%	3 909	3 836	3 795	3 704	-2.4%	3 011	2 993	2 960	2 904	-1.9%	5 823	5 806	5 712	5 673	-0.7%
EE	265	256	248	251	+1.2%	73	70	68	70	+2.5%	54	53	50	49	-2.0%	138	133	130	133	+1.8%
IE	6 243	6 422	6 613	6 674	+0.9%	1 886	2 026	2 077	2 087	+0.5%	1 649	1 660	1 778	1 792	+0.8%	2 709	2 737	2 759	2 795	+1.3%
EL	659	582	554	555	+0.2%	176	154	145	140	-3.4%	119	103	102	107	+4.9%	365	325	306	308	+0.7%
ES	6 079	6 183	6 318	6 467	+2.4%	2 302	2 325	2 404	2 492	+3.7%	746	786	804	822	+2.3%	3 031	3 072	3 110	3 153	+1.4%
FR	19 271	19 406	19 004	18 580	-2.2%	5 546	5 618	5 138	4 844	-5.7%	3 418	3 461	3 493	3 400	-2.7%	10 307	10 327	10 372	10 336	-0.3%
HR	441	455	462	470	+1.7%	132	148	154	156	+1.3%	88	88	89	99	+11.2%	221	219	219	215	-1.8%
IT			6 315	6 350	+0.6%	1 654	1 678	1 745	1 738	-0.4%	1 366	1 379	1 448	1 501	+3.6%	3 106	3 099	3 122	3 111	-0.3%
CY	60	59	63	67	+6.0%	22	21	22	23	+7.0%	10	9	10	11	+9.5%	28	29	32	33	+4.3%
LV	422	419	412	406	-1.6%	118	114	113	108	-4.2%	75	76	73	70	-3.9%	229	229	227	228	+0.5%
LT	737	723	695	676	-2.7%	192	185	179	180	+0.5%	149	152	143	135	-5.5%	395	385	373	362	-3.1%
LU	201	201	202	198	-2.1%	54	54	54	50	-7.1%	47	45	44	44	-0.3%	100	102	104	103	-0.3%
HU	802	821	852	870	+2.1%	219	220	239	243	+1.7%	176	180	176	179	+1.7%	407	421	438	448	+2.3%
MT	15	15	14	14	-1.3%	4	4	4	4	+7.7%	3	4	3	3	-3.4%	7	7	7	7	-4.9%
NL	4 169	4 315	4 294	4 030	-6.1%	1 676	1 707	1 666	1 594	-4.3%	657	660	644	575	-10.7%	1 836	1 948	1 985	1 860	-6.3%
AT	1 961	1 958	1 954	1 943	-0.6%	629	624	632	624	-1.4%	432	439	432	439	+1.5%	899	894	890	881	-1.0%
PL	5 660	5 763	5 970	6 036	+1.1%	1 450	1 617	1 718	1 713	-0.3%	1 445	1 532	1 637	1 669	+1.9%	2 765	2 614	2 615	2 654	+1.5%
PT	1 549	1 606	1 635	1 670	+2.1%	487	510	499	515	+3.1%	214	240	267	256	-4.1%	848	856	869	900	+3.5%
RO	2 069	2 092	2 050	1 989	-2.9%	463	475	447	431	-3.6%	254	261	251	244	-2.8%	1 352	1 357	1 352	1 315	-2.8%
SI	468	484	489	480	-1.9%	148	153	155	153	-1.2%	122	129	131	128	-1.8%	198	202	203	198	-2.4%
SK	466	457	446	440	-1.4%	130	130	130	125	-4.4%	93	91	84	84	+0.0%	243	236	231	231	-0.2%
FI	907	903	887	875	-1.4%	307	308	302	299	-1.1%	223	221	218	213	-2.5%	378	374	367	363	-1.1%
SE	1 436	1 428	1 436	1 449	+0.9%	473	467	468	474	+1.3%	334	342	344	342	-0.6%	629	619	624	633	+1.4%
UK	9 693	9 816	9 806	9 791	-0.2%	2 842	2 967	2 952	2 944	-0.3%	2 332	2 372	2 435	2 435	idem	4 520	4 477	4 419	4 412	-0.2%
EU	82 280	82 996	89 152	88 424	-0.8%	26 705	27 209	26 911	26 468	-1.6%	18 189	18 445	18 764	18 635	-0.7%	43 514	43 498	43 476	43 320	-0.4%

Source : EStat Newcronos

EU %Var is calculated considering only countries available in 2016 AND 2017

06 March 2018

Agriculture
and Rural
Development

LIVESTOCK

DECEMBER SURVEY



European
Commission

EU EVOLUTION COWS

Dec	TOTAL COWS					%Var 2017 2016	DAIRY COWS					%Var 2017 2016	OTHER COWS					%Var 2017 2016
1000 Hd	2014	2015	2016	2017			2014	2015	2016	2017			2014	2015	2016	2017		
BE	956	974	988	938	-5.1%		519	529	531	519	-2.2%		436	445	457	419	-8.4%	
BG	351	359	365	357	-2.2%		302	283	279	260	-6.7%		49	76	86	97	+12.4%	
CZ	566	566	561	571	+1.9%		372	369	367	365	-0.5%		194	197	193	206	+6.4%	
DK	643	664	657	664	+1.1%		547	570	565	575	+1.8%		96	94	92	89	-3.3%	
DE	4 969	4 966	4 887	4 859	-0.6%		4 296	4 285	4 218	4 199	-0.4%		674	681	670	660	-1.4%	
EE	118	116	114	116	+1.8%		96	91	86	86	+0.3%		23	25	28	30	+6.1%	
IE	2 169	2 293	2 337	2 362	+1.0%		1 128	1 240	1 295	1 343	+3.7%		1 041	1 053	1 042	1 018	-2.3%	
EL	305	274	241	244	+1.2%		135	111	106	103	-2.8%		169	163	135	141	+4.4%	
ES	2 669	2 763	2 785	2 823	+1.4%		845	844	834	824	-1.3%		1 824	1 919	1 950	1 999	+2.5%	
FR	7 841	7 872	7 856	7 745	-1.4%		3 699	3 661	3 630	3 595	-1.0%		4 142	4 211	4 225	4 151	-1.8%	
HR	180	171	167	161	-3.6%		159	152	147	139	-5.4%		21	19	20	22	+10.0%	
IT			2 365	2 338	-1.1%				2 060	2 040	-1.0%				305	298	-2.2%	
CY	25	26	29	30	+6.2%		25	26	28	30	+6.2%		0	0	0	0	-7.1%	
LV	200	201	199	199	+0.1%		166	162	154	150	-2.4%		34	39	45	49	+8.8%	
LT	351	343	333	323	-3.1%		314	301	286	273	-4.5%		37	43	47	50	+5.7%	
LU	75	77	80	78	-1.7%		47	49	52	52	+0.3%		29	28	28	26	-5.4%	
HU	359	368	383	395	+3.1%		255	250	244	244	idem		104	117	138	151	+9.4%	
MT	7	7	7	6	-5.1%		7	6	7	6	-5.5%		0	0	0	0	+16.7%	
NL	1 694	1 802	1 864	1 723	-7.6%		1 610	1 717	1 794	1 665	-7.2%		84	85	70	58	-17.1%	
AT	768	758	757	750	-0.8%		538	534	540	543	+0.7%		230	224	217	207	-4.5%	
PL	2 403	2 303	2 304	2 341	+1.6%		2 248	2 134	2 130	2 153	+1.1%		155	169	174	188	+8.2%	
PT	697	719	724	728	+0.6%		234	243	239	239	-0.1%		463	476	485	490	+1.0%	
RO	1 207	1 207	1 204	1 171	-2.8%		1 188	1 191	1 193	1 159	-2.8%		18	17	12	12	-1.7%	
SI	168	170	171	169	-1.5%		108	113	108	109	+0.9%		60	57	64	60	-5.7%	
SK	202	200	194	195	+0.3%		143	139	133	130	-2.1%		59	60	62	65	+5.3%	
FI	340	339	333	329	-1.2%		283	282	275	271	-1.7%		57	57	57	58	+1.1%	
SE	517	513	514	522	+1.7%		344	337	326	323	-0.8%		173	176	188	199	+6.0%	
UK	3 419	3 469	3 451	3 444	-0.2%		1 883	1 918	1 898	1 902	+0.2%		1 536	1 551	1 554	1 542	-0.8%	
EU	33 198	33 521	35 868	35 581	-0.8%		21 489	21 537	23 525	23 299	-1.0%		11 708	11 983	12 342	12 283	-0.5%	

06 March 2018

Source : EStat Newcronos

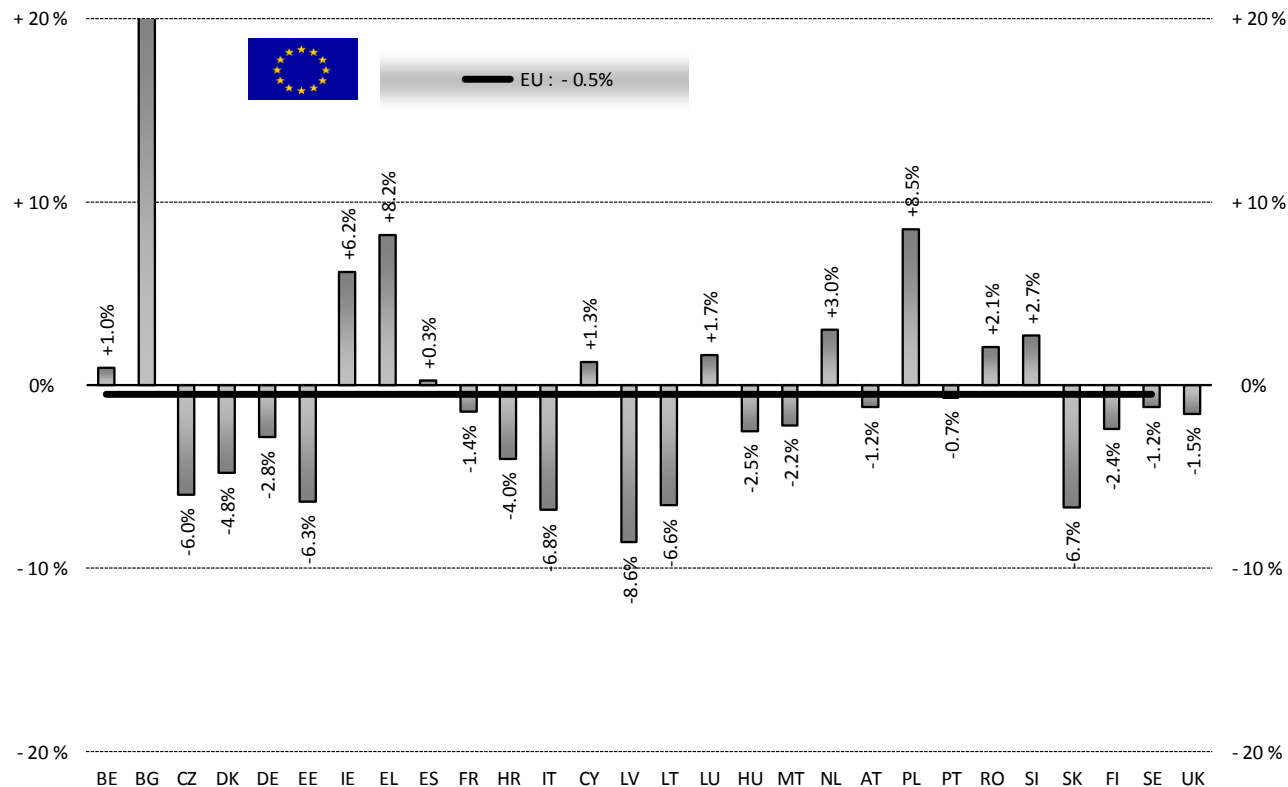
Agriculture
and Rural
Development

EU %Var is calculated considering only countries available in 2016 AND 2017



HEADS	Jan-Dec 16/17	
	EU15	EU28
Bull	-1.9%	-0.1%
Bullock	+2.9%	+2.8%
Cow	-4.1%	-3.5%
Heifer	+5.5%	+5.6%
Calve	-1.2%	-1.3%
Young cattle	-4.2%	-3.9%
Meat of bovine animals	-1.1%	-0.5%

Estimates for last month of period :



Source : EStat - Newcronos

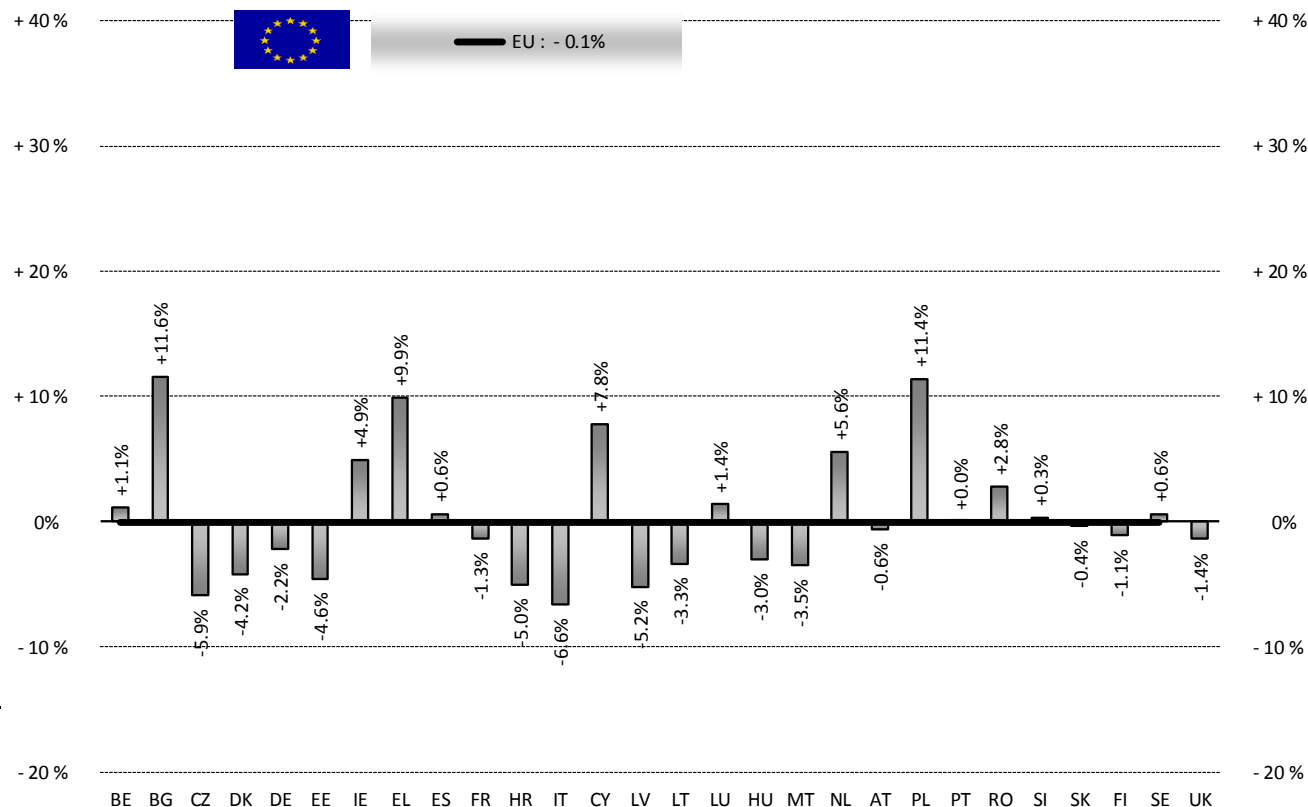
PRODUCTION

% EVOLUTION TONNES



TONNES	Jan-Dec 16/17	
	EU15	EU28
Bull	-1.8%	-0.0%
Bullock	+1.6%	+1.5%
Cow	-3.9%	-3.3%
Heifer	+6.8%	+7.1%
Calve	-0.4%	-0.4%
Young cattle	-4.1%	-3.3%
Meat of bovine animals	-0.8%	-0.1%

Estimates for last month of period :

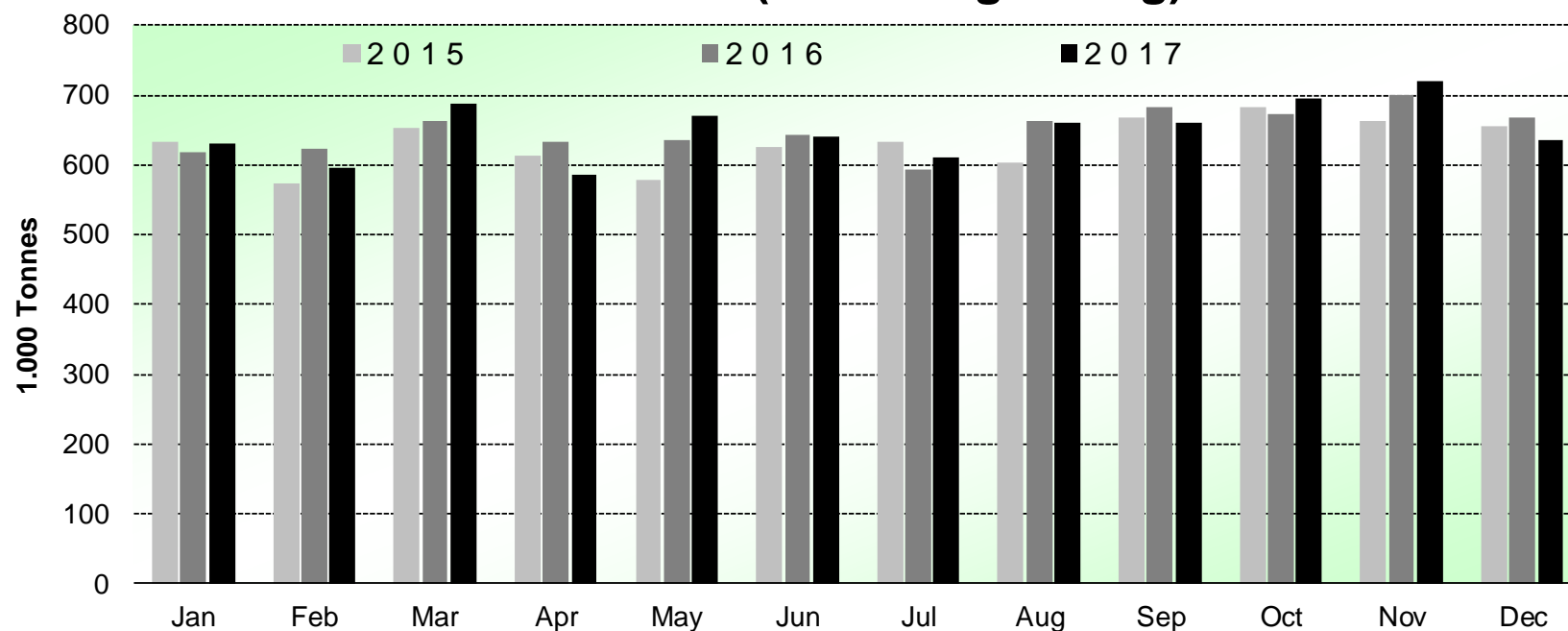


Source : EStat - Newcronos

06 March 2018



Beef & Veal Production (E28 Slaughtering) - Tonnes



Source : EStat-Newcronos

06 March 2018

PRICES CARCASSES

Dashboard

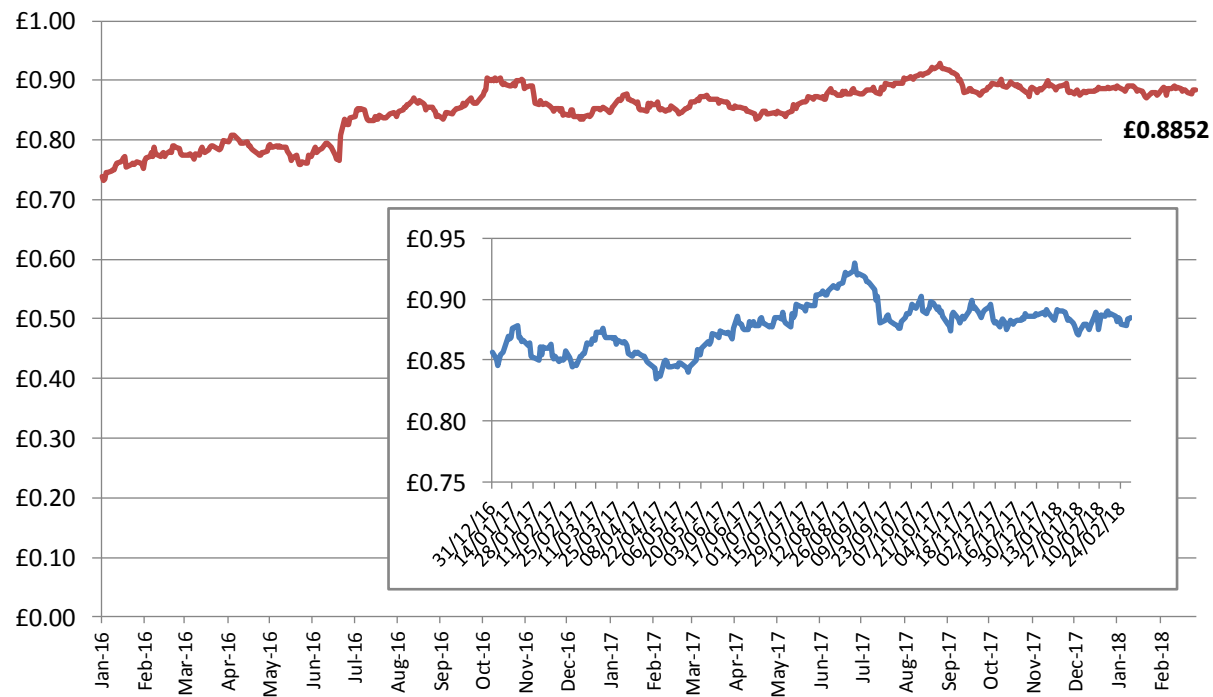


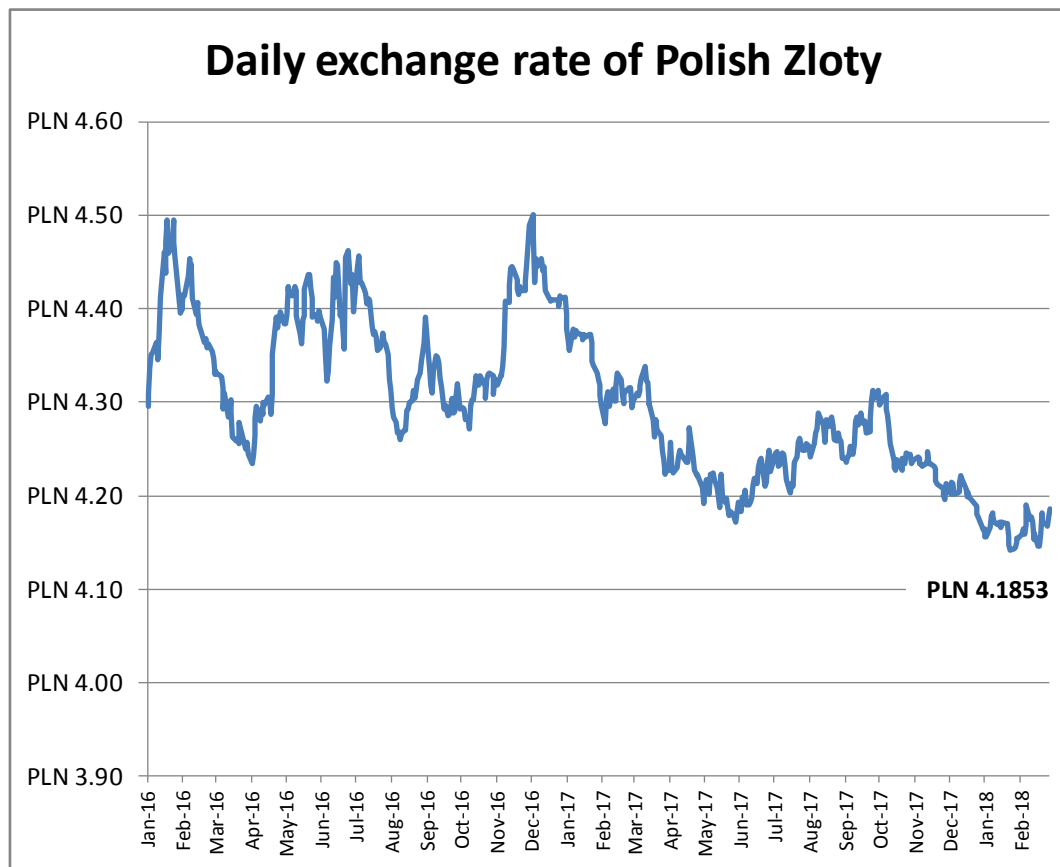
EU Prices week		8			
			Evolution since last week	Evolution since last month	Evolution since last year
Carcasse	Average A/C/Z -R3	384.7	- 0.0%	- 1.0%	+ 2.5%
	Young Bovines (Z)	398.1	- 1.1%	- 1.3%	- 1.1%
	Young Bulls (A)	387.8	+ 0.1%	- 1.1%	+ 3.2%
	Steers (C)	397.2	+ 0.3%	- 1.3%	- 0.2%
	Cows (D)	298.2	+ 0.4%	+ 1.1%	+ 7.1%
	Heifers (E)	388.8	+ 0.1%	- 0.4%	+ 1.7%
Live Animals	Male Calves Dairy Type	99.35	+ 3.4%	+ 14.7%	+ 17.1%
	Male Calves Beef Type	220.1	- 1.4%	+ 2.4%	- 1.4%
	Young Store Cattle	2.42	- 2.2%	- 0.2%	+ 1.9%
	Yearling Male Store Cattle	2.33	- 0.1%	+ 2.6%	+ 0.7%
	Yearling Female Store Cattle	2.38	+ 0.5%	+ 0.6%	+ 3.8%
	Calves slaughtered <8M	544.7	+ 0.0%	- 0.5%	+ 3.6%

Sources : MSs notifications (Regulation (EC) 1249/2008 and 807/2013)

06 March 2018

Daily exchange rate of Pound Sterling compared to the Euro





06 March 2018

PRICES CARCASSES

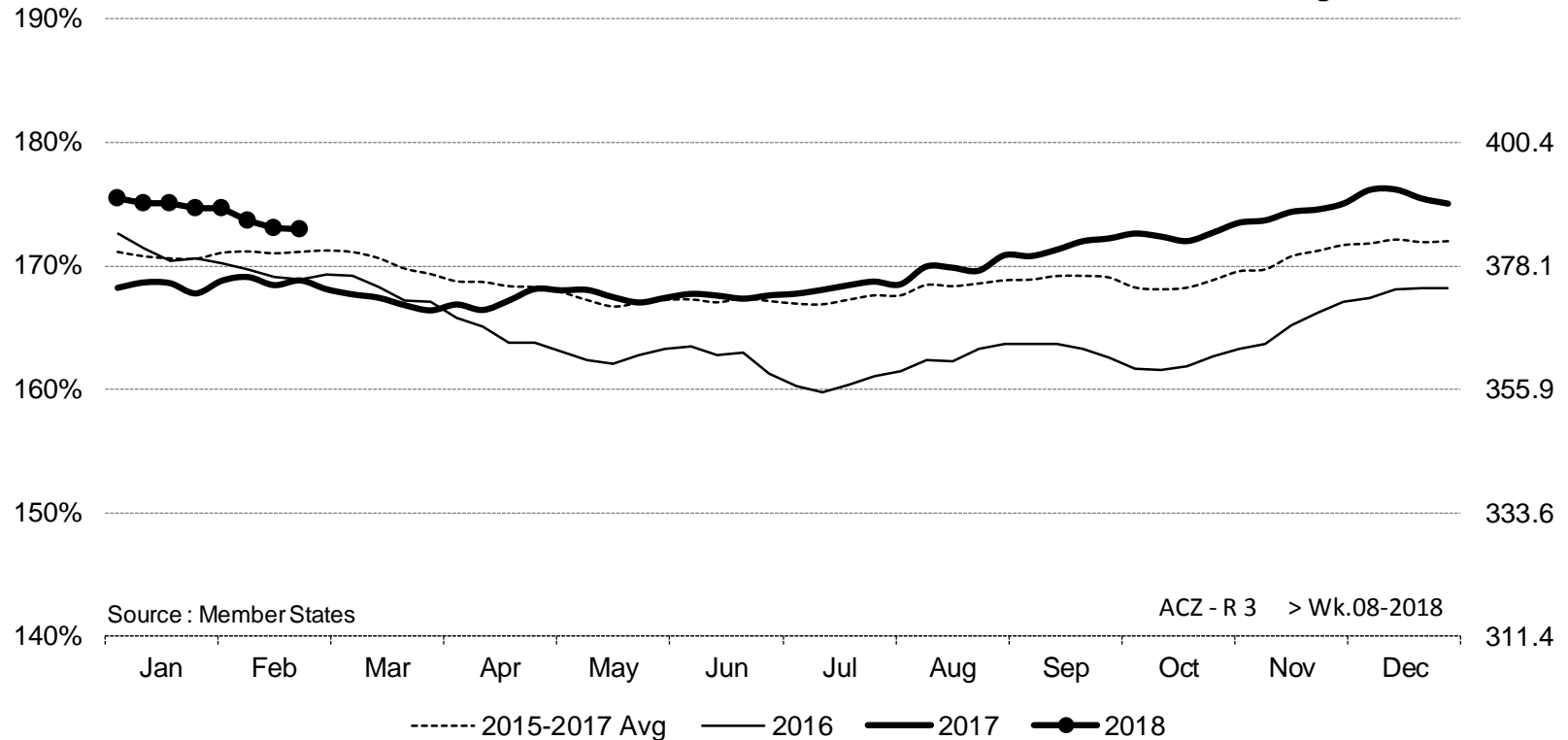


EU EVOLUTION A/C/Z.R3

ACZ - R 3 > Wk.08-2018

% of Reference Price

€/100 kg cwe



Price in week 08 : **384.70**

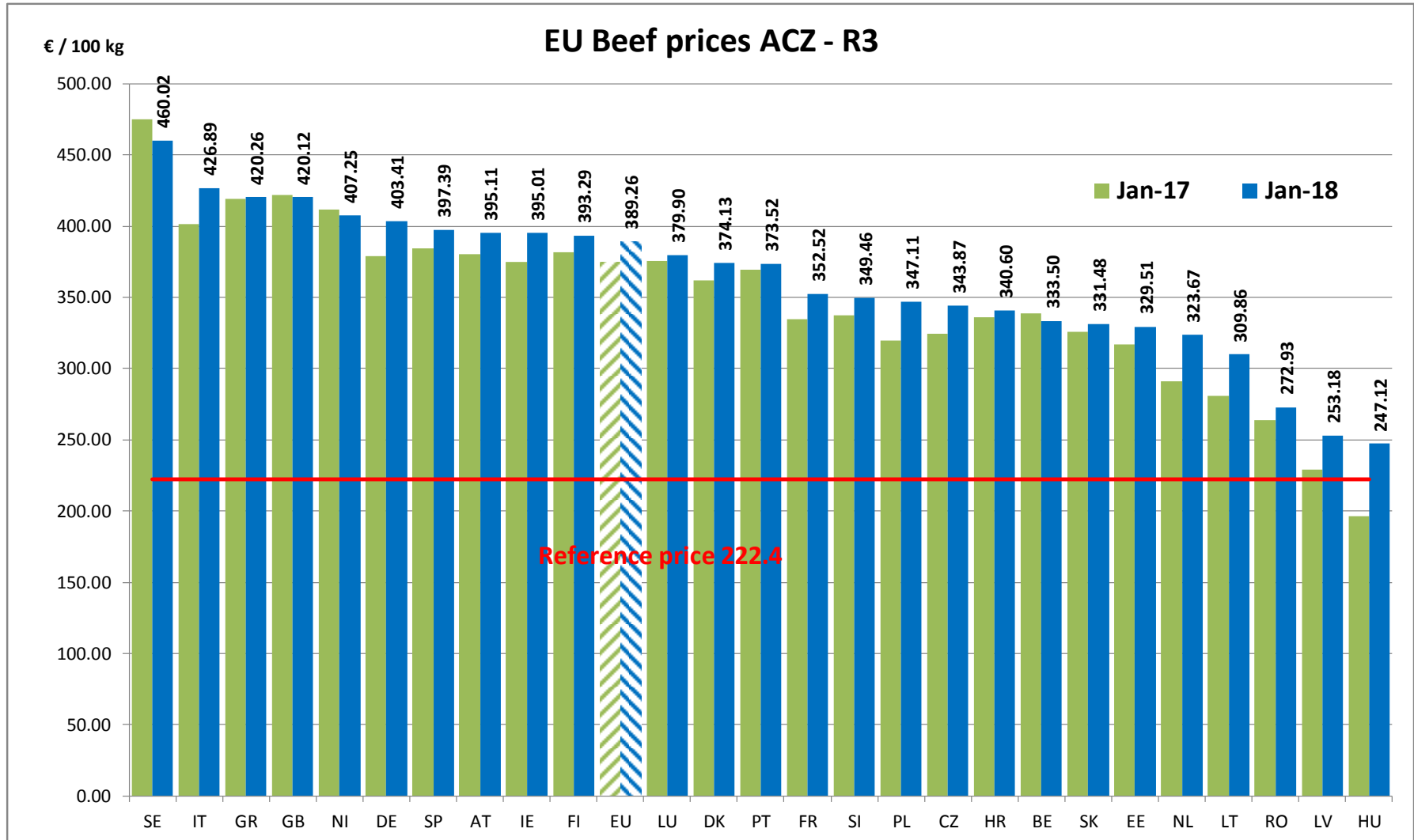
% change y/y : **+ 2.5%**

% Ref. Price in wk 8 : **168.8%**

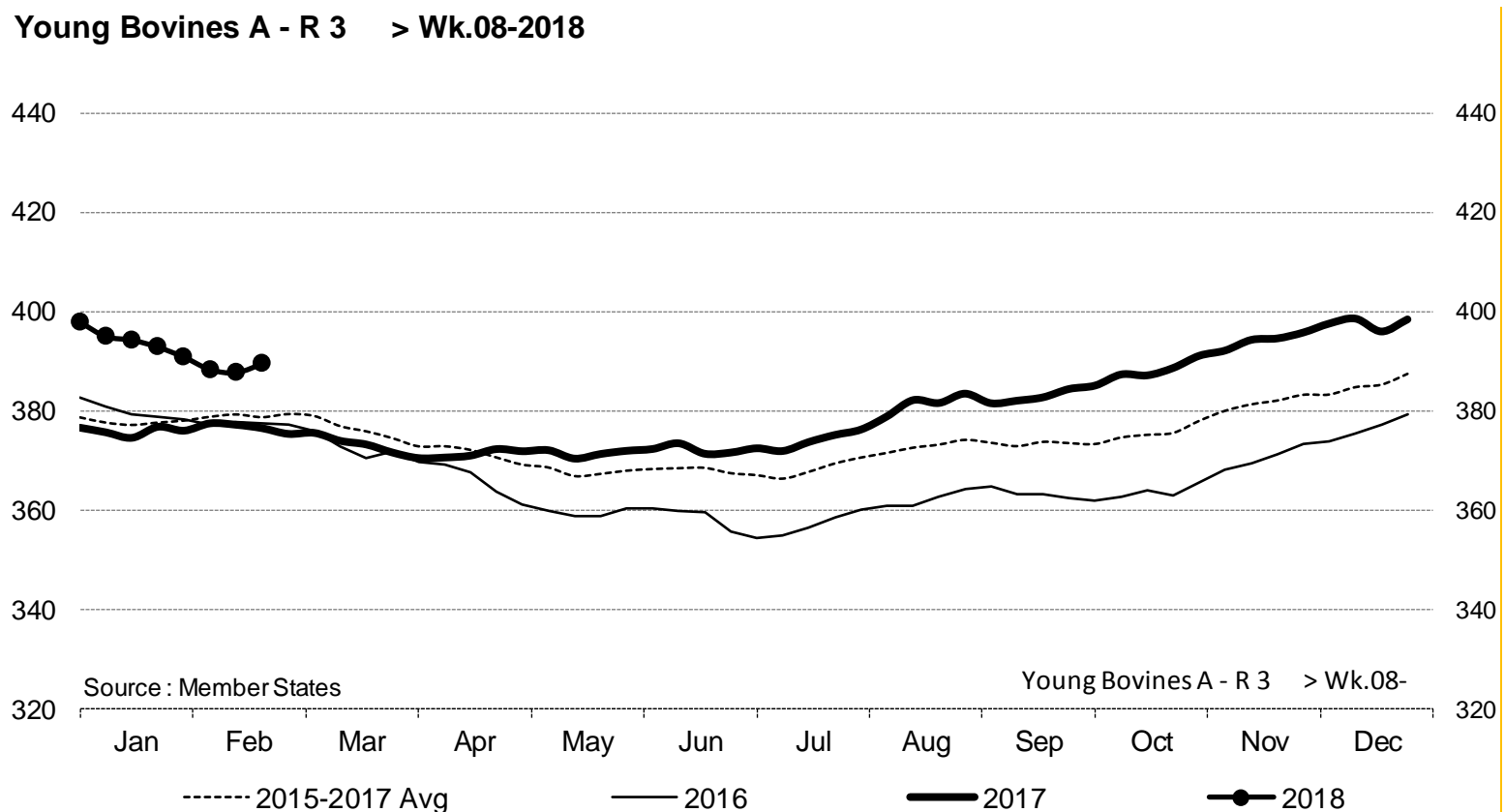
Average price in January 2018 : **389.26**

% change y/y : **+ 4.0%**

06 March 2018



Young Bovines A - R 3 > Wk.08-2018



Price in week 08 : **389.50**
% change y/y : **+ 3.4%**

Average price in January 2018 : **394.59**
% change y/y : **+ 4.9%**

06 March 2018

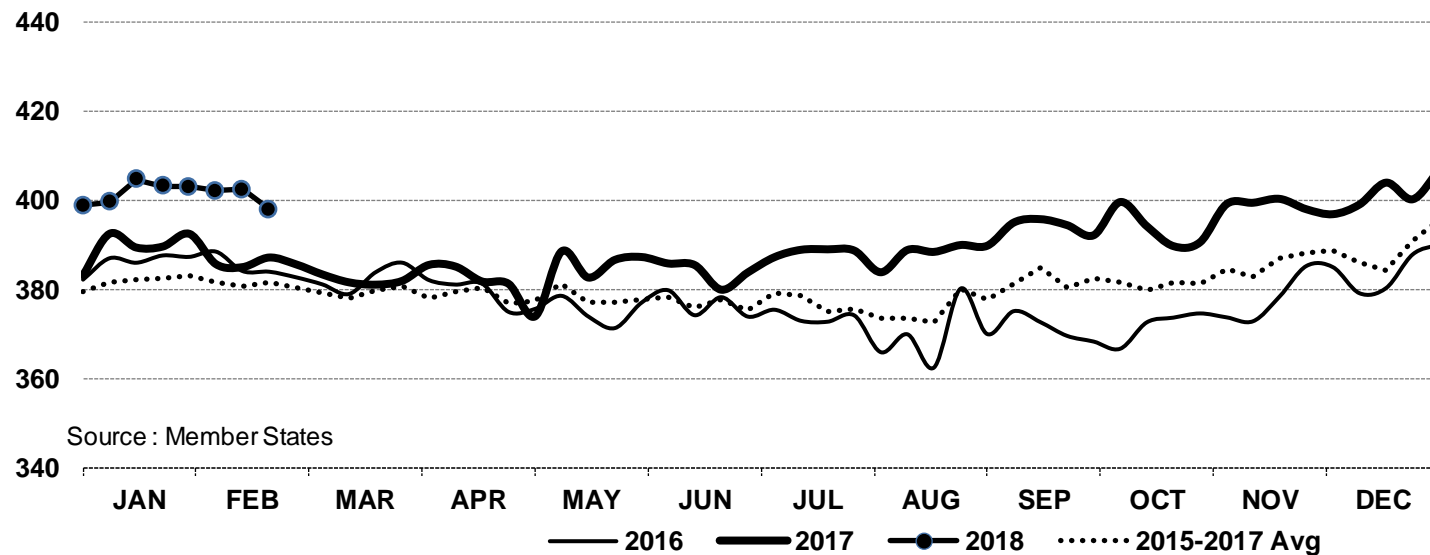
PRICES CARCASSES



E.U. EVOLUTION YOUNG BOVINE 8-12M- Z.R3

In € / 100 kg

Young Bovines 8-12m Z - R 3 > Wk.08-2018



Price in week 08 : **398.10**
% change y/y : **+ 2.8%**

26/01/2018

Average price in January 2018 : **401.83**
% change y/y : **+ 3.3%**

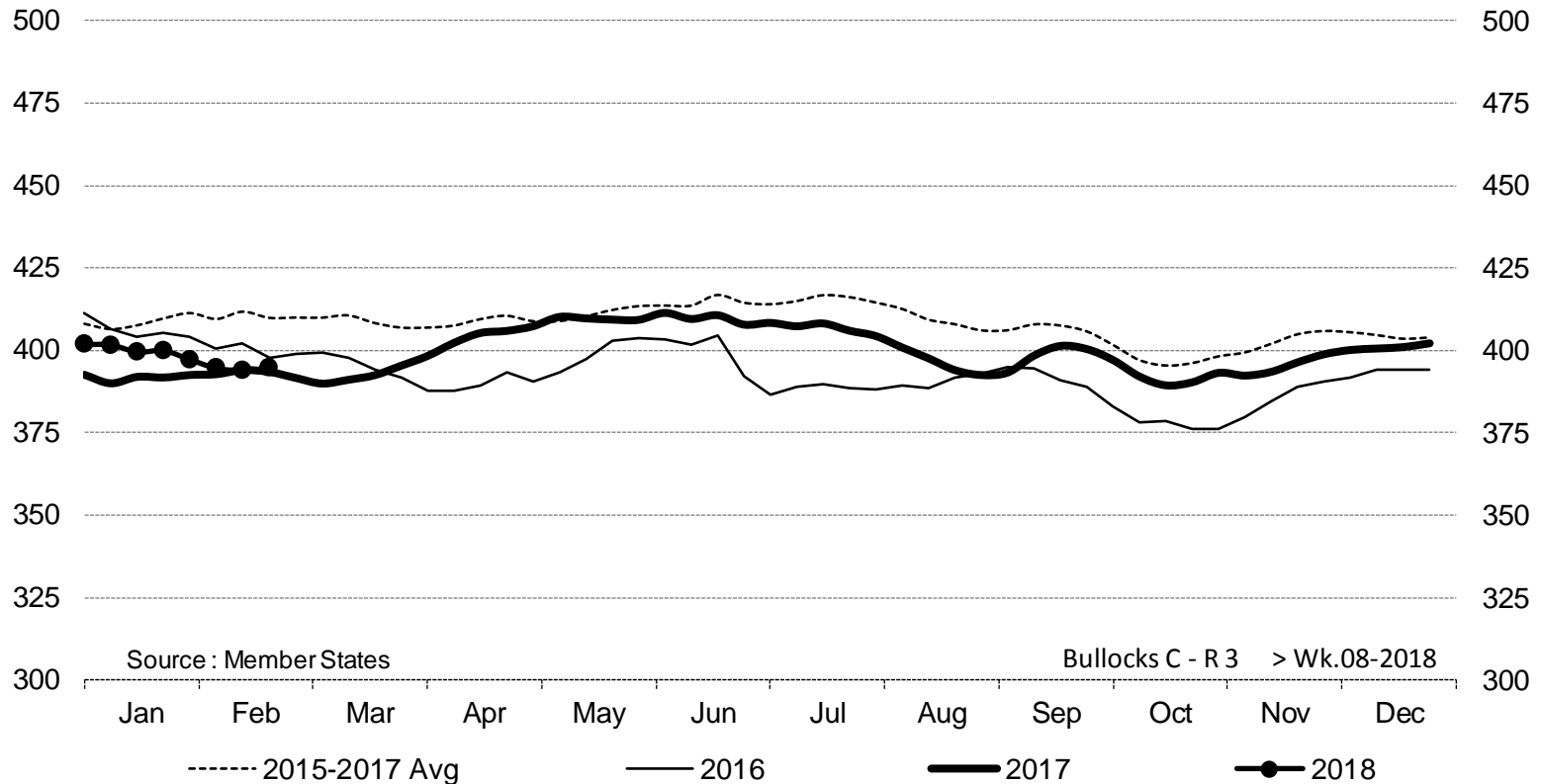
06 March 2018

PRICES CARCASSES



E.U. EVOLUTION STEER – C.R3

Bullocks C - R 3 > Wk.08-2018



Price in week 08 : **394.63**
% change y/y : **+ 0.3%**

Average price in January 2018 : **400.35**
% change y/y : **+ 2.2%**

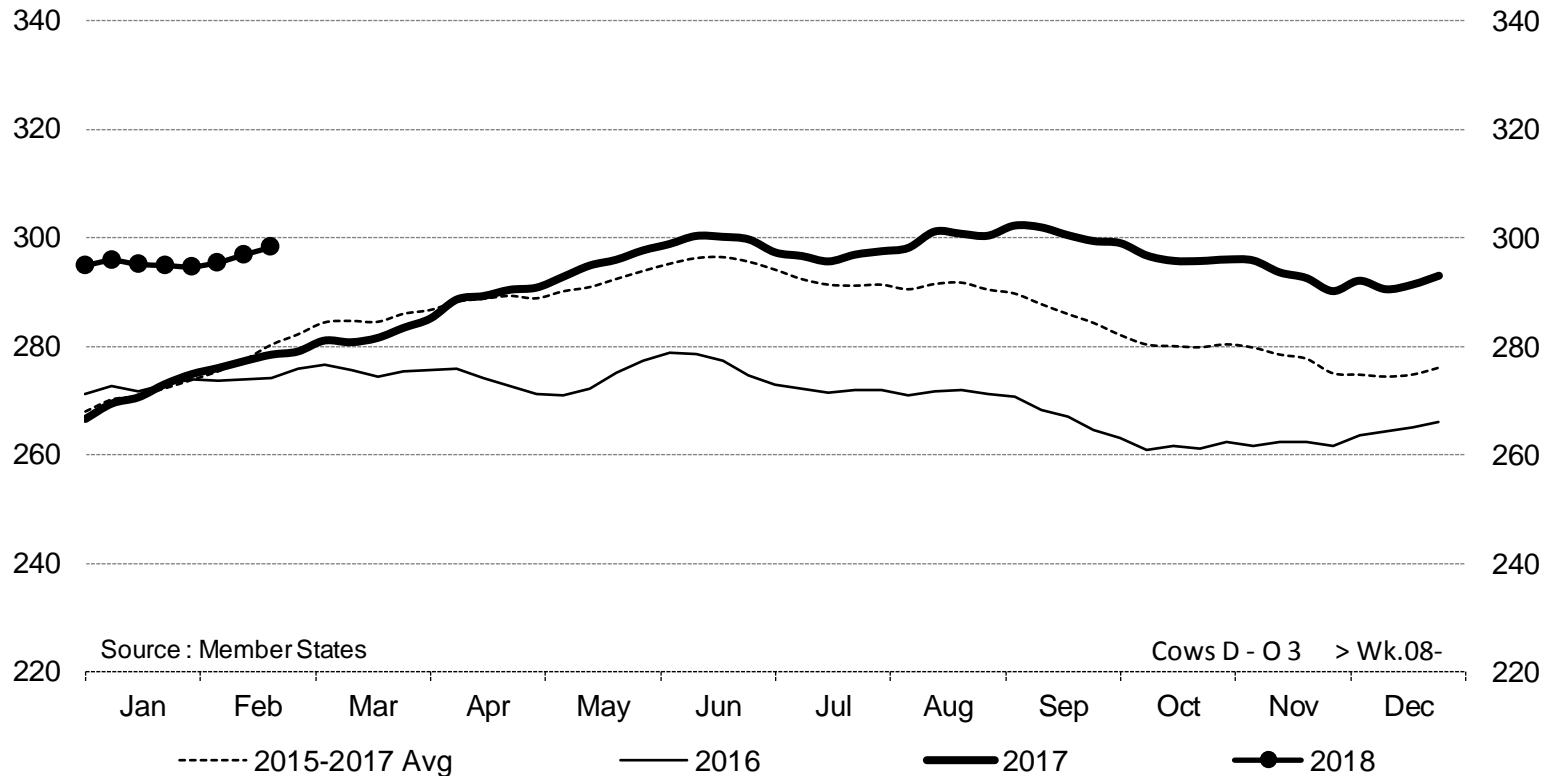
06 March 2018

PRICES CARCASSES



E.U. EVOLUTION COW – D.O3

Cows D - O 3 > Wk.08-2018

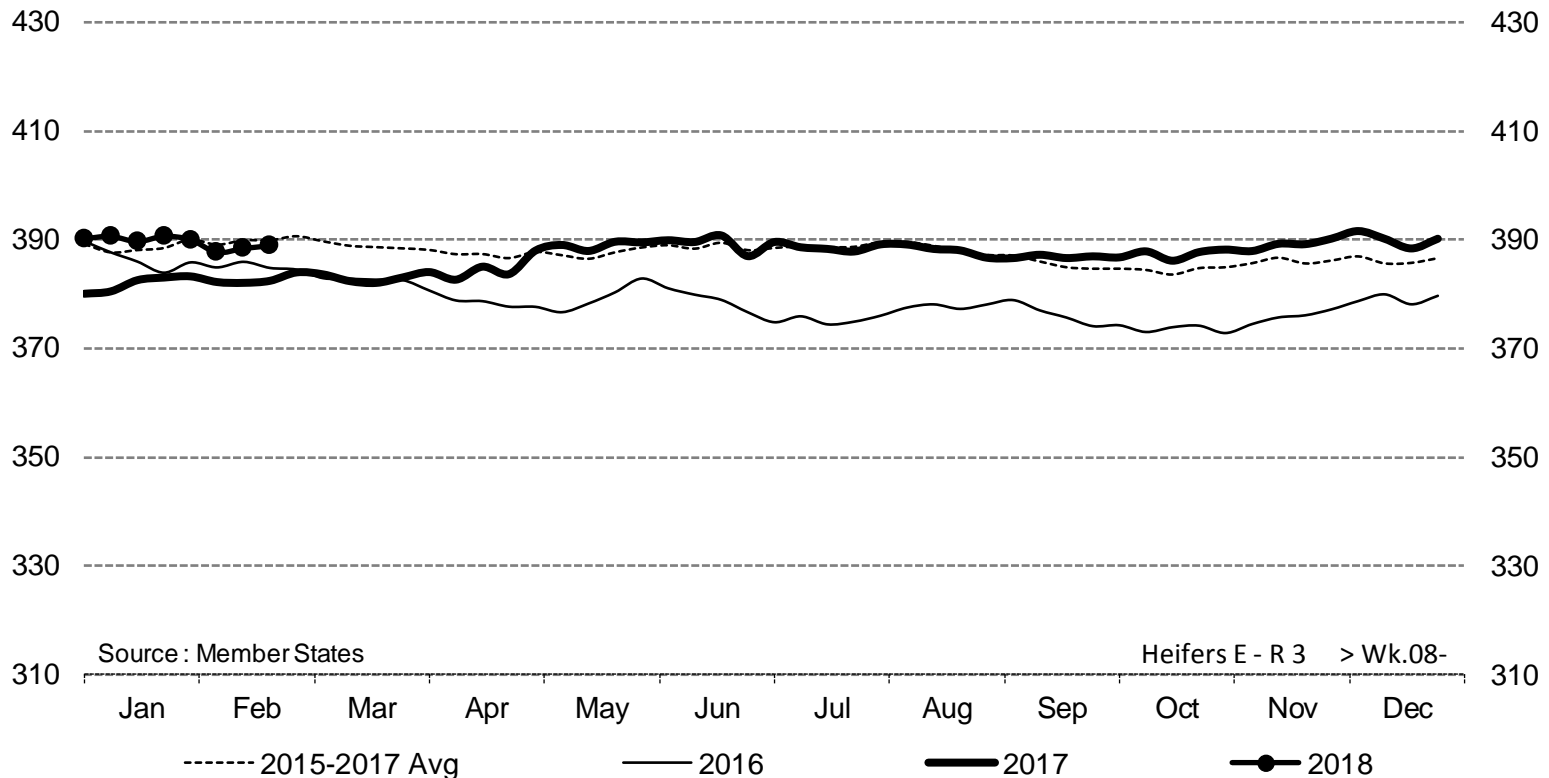


Price in week 08 : **298.29**
% change y/y : **+ 7.1%**

Average price in January 2018 : **295.17**
% change y/y : **+ 9.3%**

06 March 2018

Heifers E - R 3 > Wk.08-2018



Price in week 08 : **388.85**
% change y/y : **+ 1.7%**

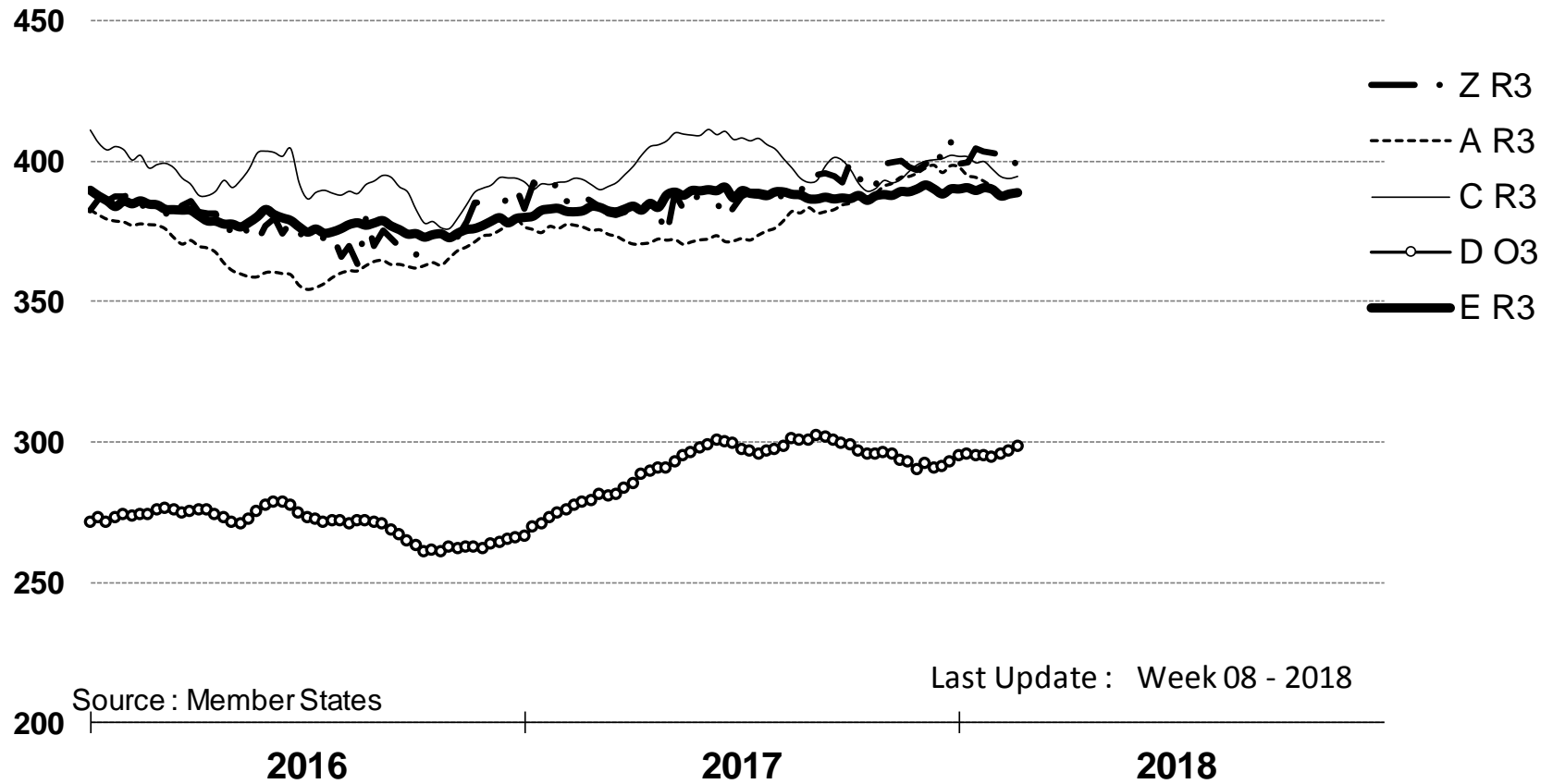
Average price in January 2018 : **390.22**
% change y/y : **+ 2.3%**

06 March 2018

PRICES CARCASSES

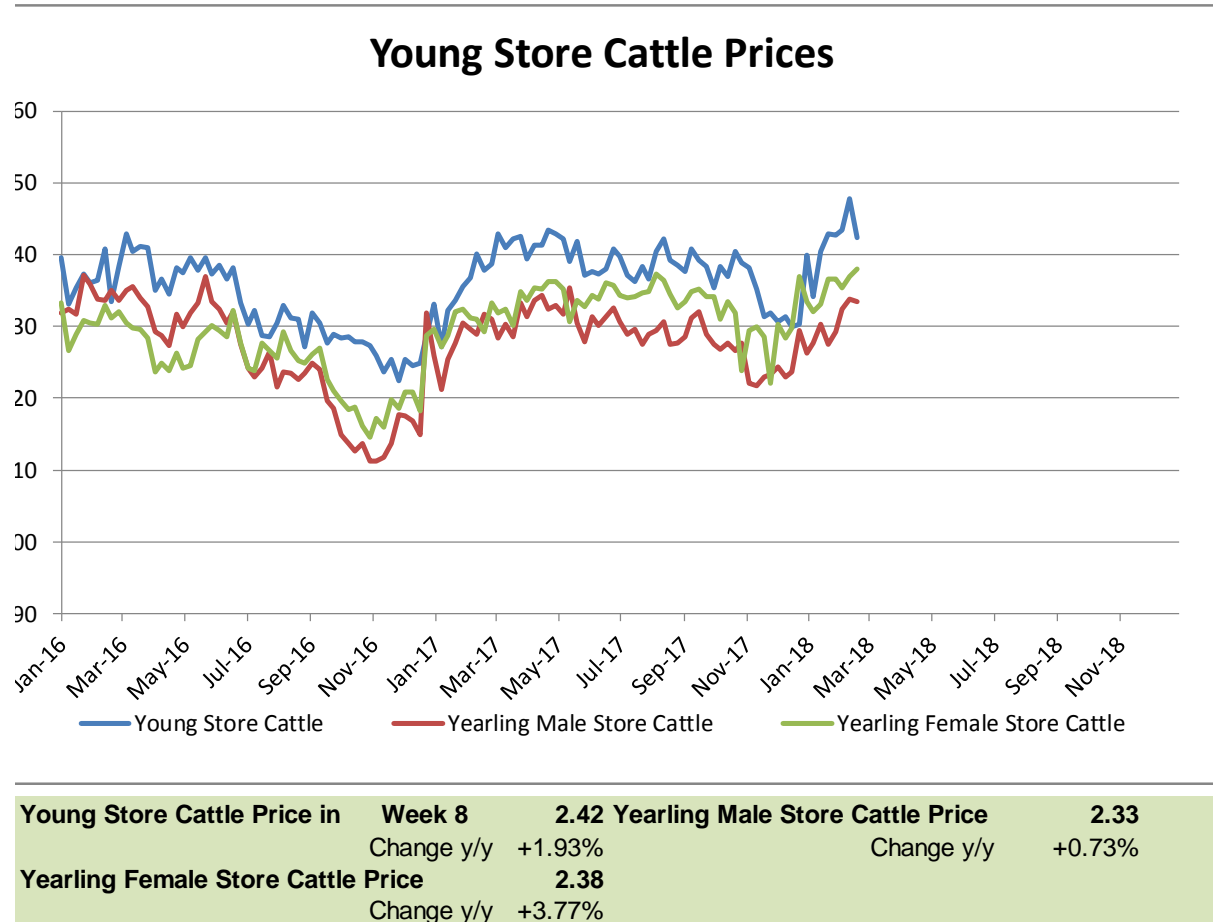


EU EVOLUTION All CAT GLOBAL VIEW



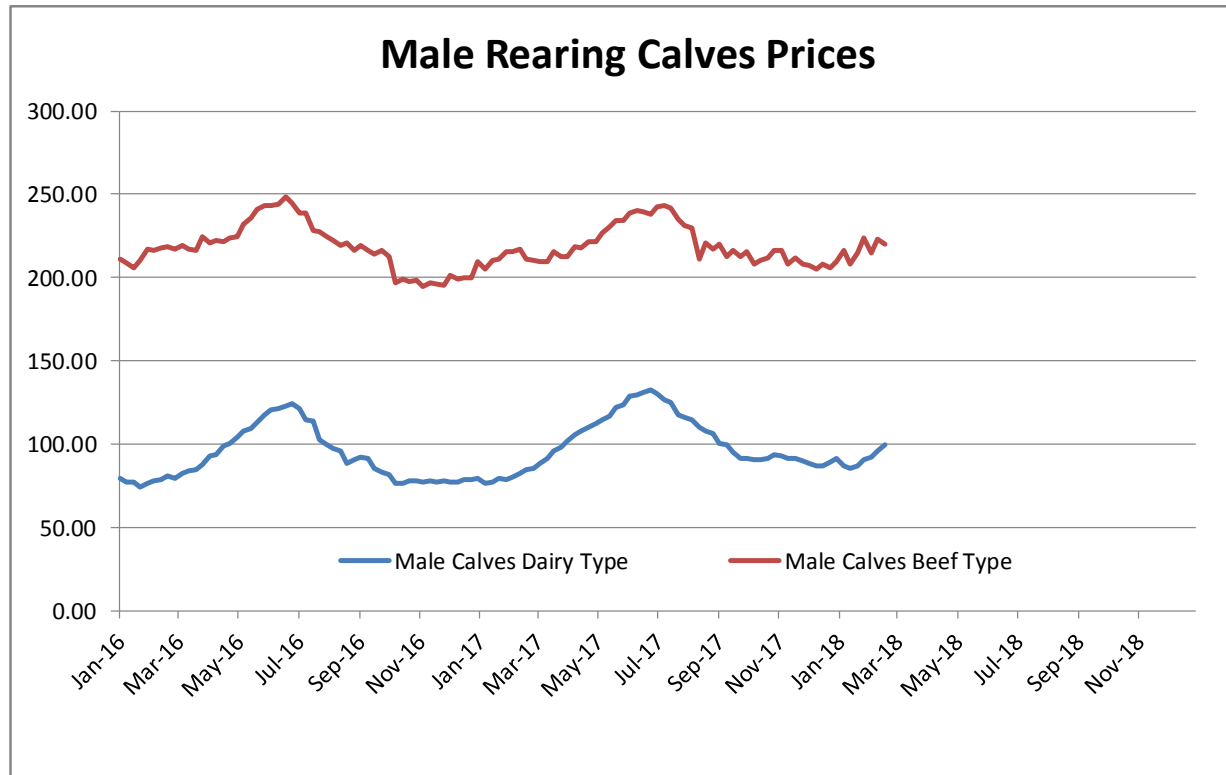
06 March 2018

Store cattle (€/100 kg live weight)



06 March 2018

Male calves aged between 8 days and 4 weeks (€/head)



Male Rearing Calves Beef type

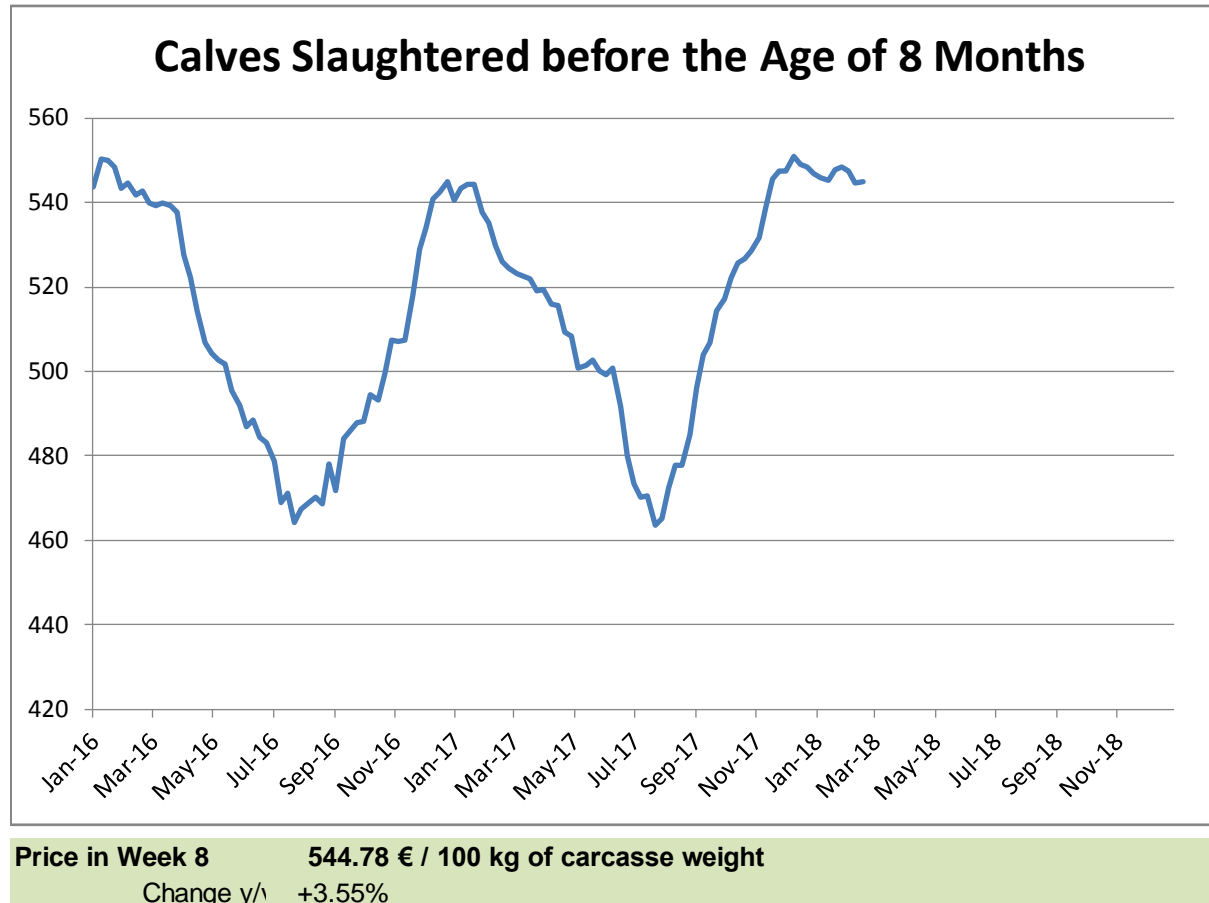
Price in Week 8 **220.14**
Change y/y **+4.33%**

Male Rearing Calves Dairy type

Price in Week 8 **99.35**
Change y/y **+17.07%**

06 March 2018

Calves slaughtered before the age of less than 8 months (€/100 kg cw)

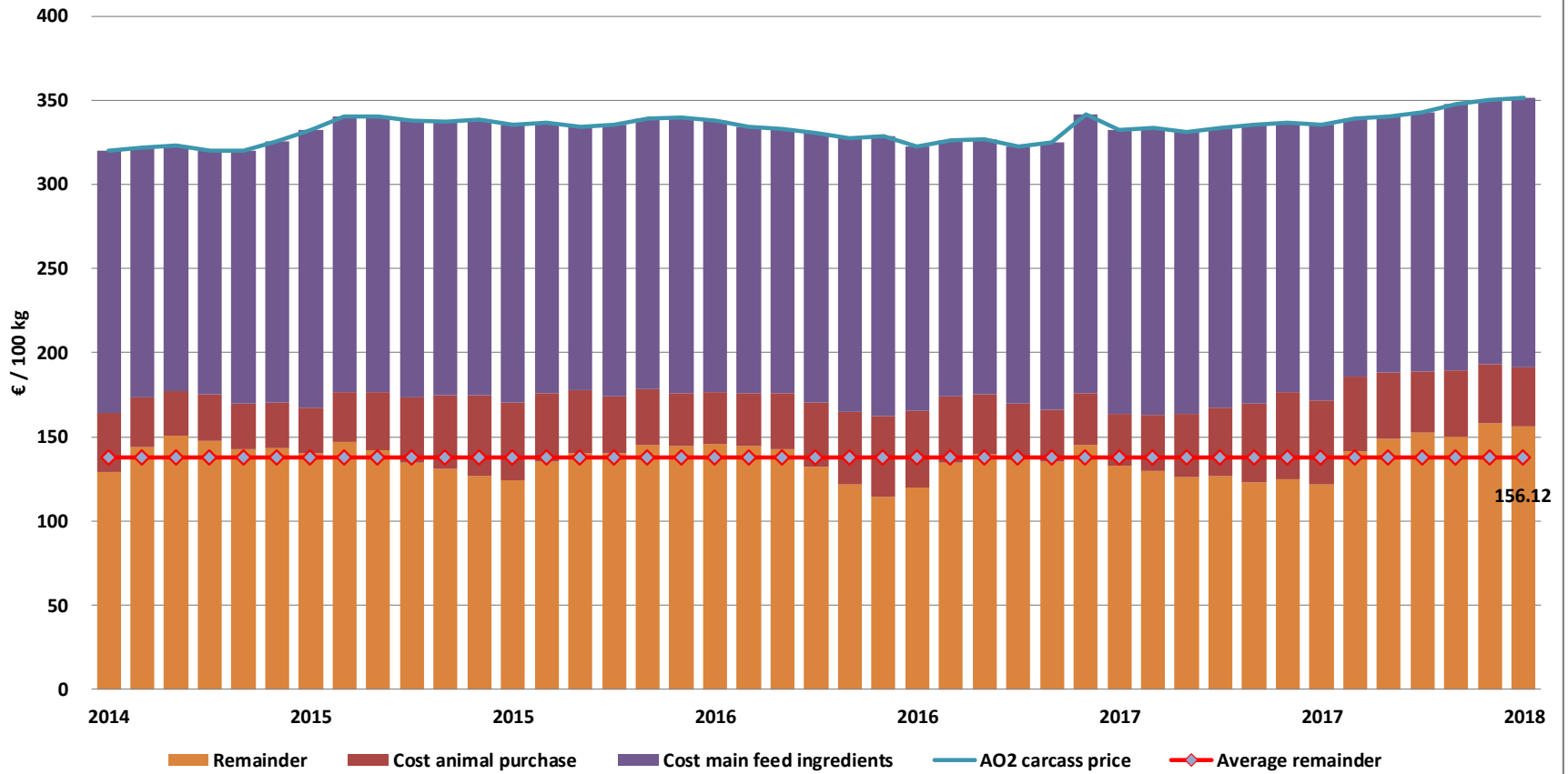


06 March 2018

REMAINDERS



Remainder for dairy calves fattening

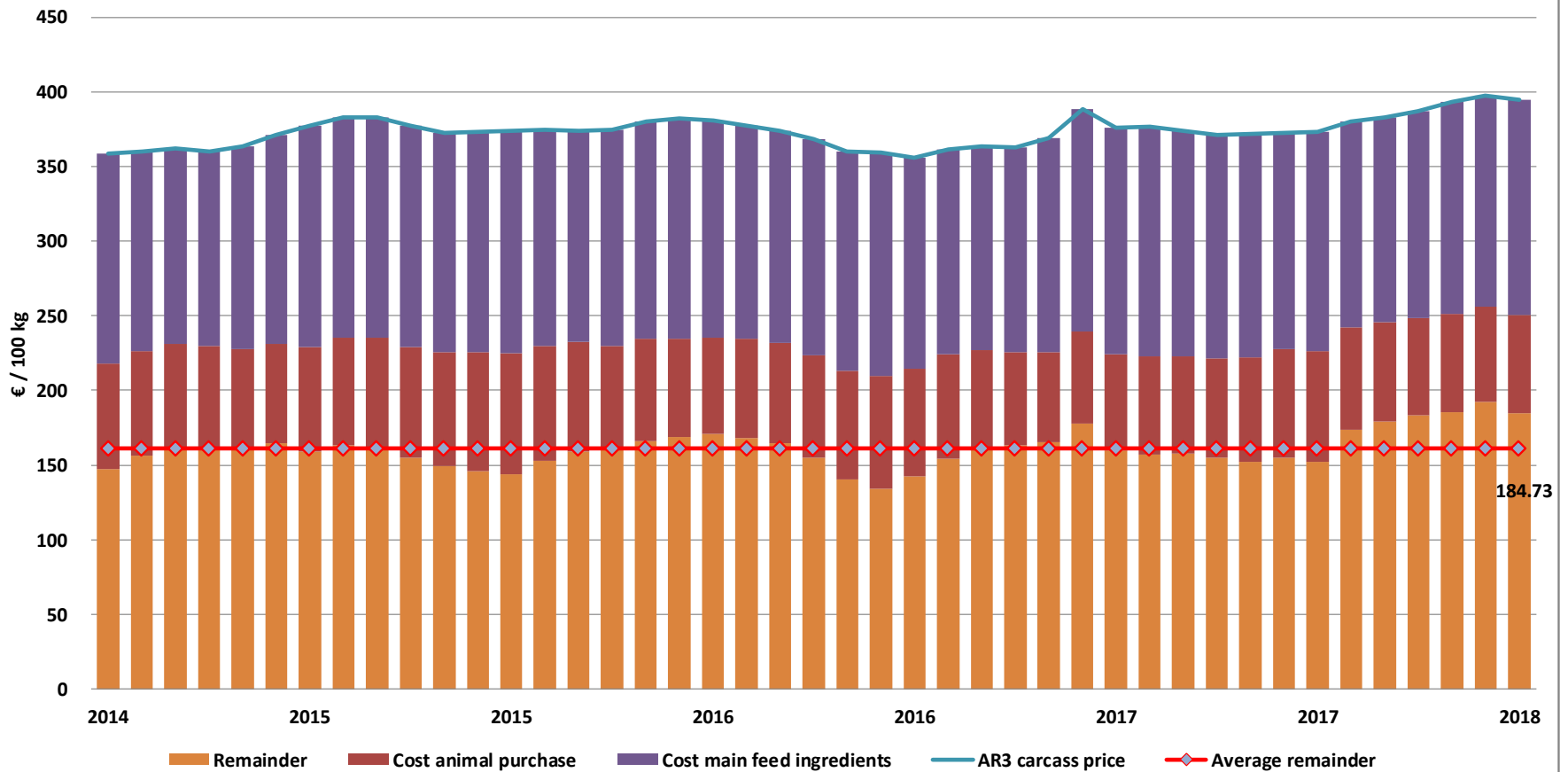


06 March 2018

REMAINDERS



Remainder for beef type calves fattening

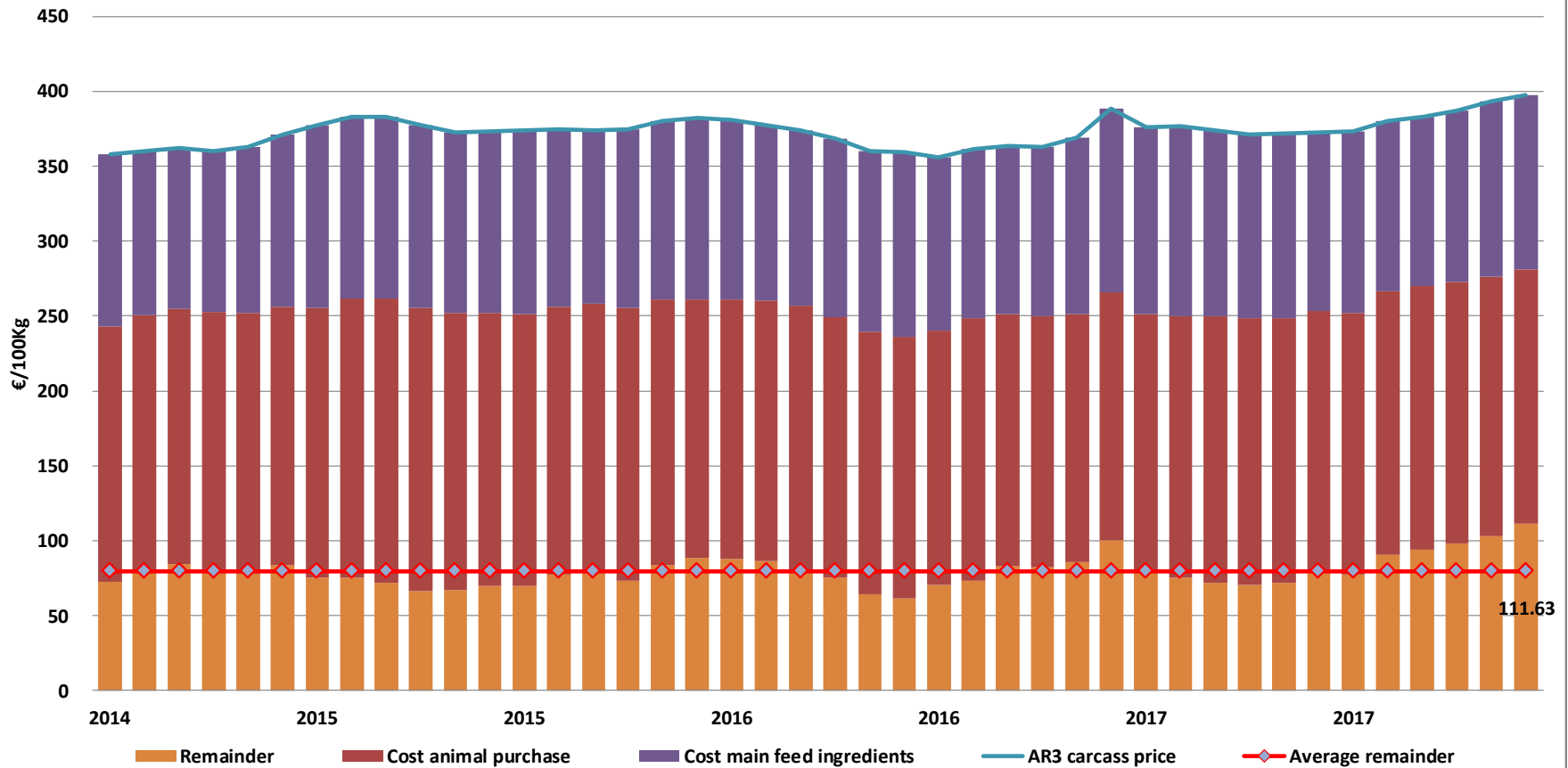


06 March 2018

REMAINDERS



Remainder for young store cattle fattening



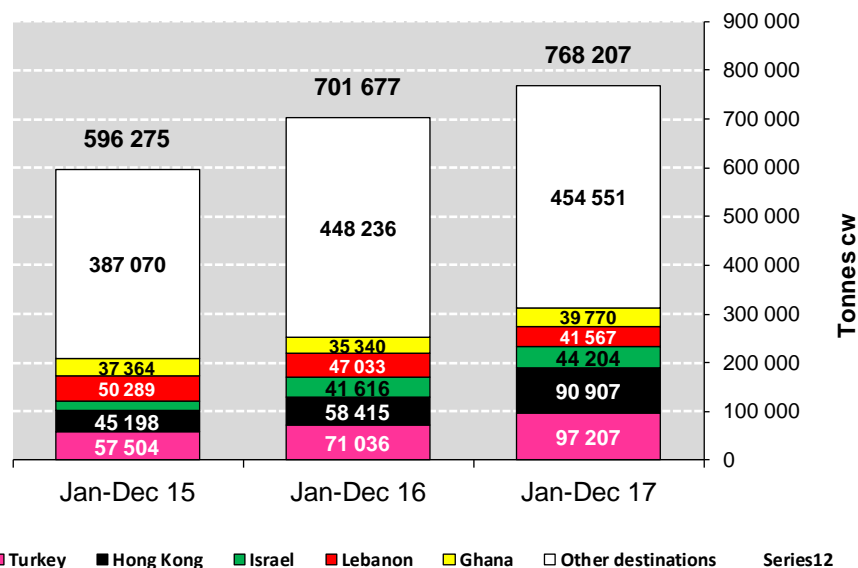
06 March 2018

EU exports of beef and live animals (1): Trade figures (COMEXT – tonnes cwe)

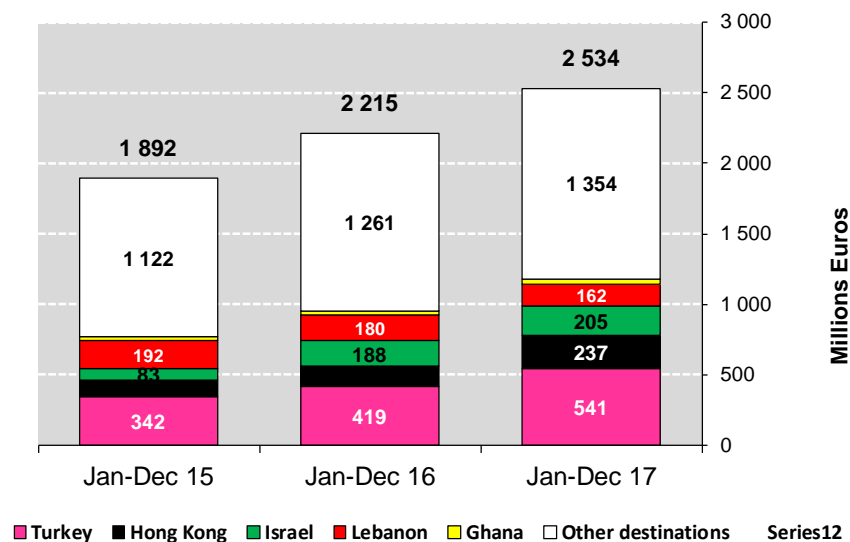
Destinations	2013		2014		2015		2016		Jan-Dec 17		Compared to Jan-Dec 16
	tonnes	%	tonnes	%	tonnes	%	tonnes	%	tonnes	%	
Turkey	5 086	1.1%	8 098	1.4%	57 504	9.6%	71 142	10.1%	97 207	12.7%	+ 36.8%
Hong Kong	28 573	6.3%	65 112	11.6%	45 198	7.6%	58 352	8.3%	90 907	11.8%	+ 55.6%
Israel	9 378	2.1%	8 353	1.5%	18 851	3.2%	41 616	5.9%	44 204	5.8%	+ 6.2%
Lebanon	24 007	5.3%	37 984	6.8%	50 288	8.4%	47 042	6.7%	41 567	5.4%	- 11.6%
Ghana	40 878	9.0%	33 255	5.9%	37 364	6.3%	35 340	5.0%	39 770	5.2%	+ 12.5%
Ivory Coast	21 619	4.8%	28 839	5.2%	35 742	6.0%	36 713	5.2%	38 685	5.0%	+ 5.4%
Philippines	2 730	0.6%	11 839	2.1%	13 053	2.2%	24 247	3.5%	38 452	5.0%	+ 58.6%
Bosnia-Herz.	24 068	5.3%	34 104	6.1%	39 896	6.7%	38 935	5.5%	34 748	4.5%	- 10.8%
Switzerland	26 347	5.8%	26 634	4.8%	26 019	4.4%	25 655	3.7%	27 567	3.6%	+ 7.6%
Libya	17 778	3.9%	14 280	2.6%	19 691	3.3%	29 714	4.2%	27 360	3.6%	- 8.0%
Algeria	25 911	5.7%	18 499	3.3%	16 085	2.7%	25 004	3.6%	26 461	3.4%	+ 5.8%
Russia	72 281	16.0%	96 928	17.3%	13 546	2.3%	16 433	2.3%	23 137	3.0%	+ 40.8%
Vietnam	3 175	0.7%	6 410	1.1%	11 627	1.9%	22 252	3.2%	14 172	1.8%	- 36.3%
Norway	10 222	2.3%	7 879	1.4%	19 123	3.2%	18 364	2.6%	12 915	1.7%	- 29.5%
Egypt	2 592	0.6%	2 763	0.5%	9 805	1.6%	15 958	2.3%	12 141	1.6%	- 23.9%
For.JRep.Mac	10 577	2.3%	11 370	2.0%	12 561	2.1%	11 781	1.7%	11 563	1.5%	- 1.8%
Angola	10 589	2.3%	14 587	2.6%	9 643	1.6%	13 549	1.9%	11 159	1.5%	- 17.6%
Other Destinations	116 726	25.8%	132 305	23.7%	160 282	26.9%	169 916	24.2%	176 192	22.9%	
Extra-EU	452 537		559 238		596 278		702 013		768 207		
% change			+ 24%		+ 7%		+ 18%		+ 9.5%		

EU exports of beef and live animals: Trade figures (COMEXT)

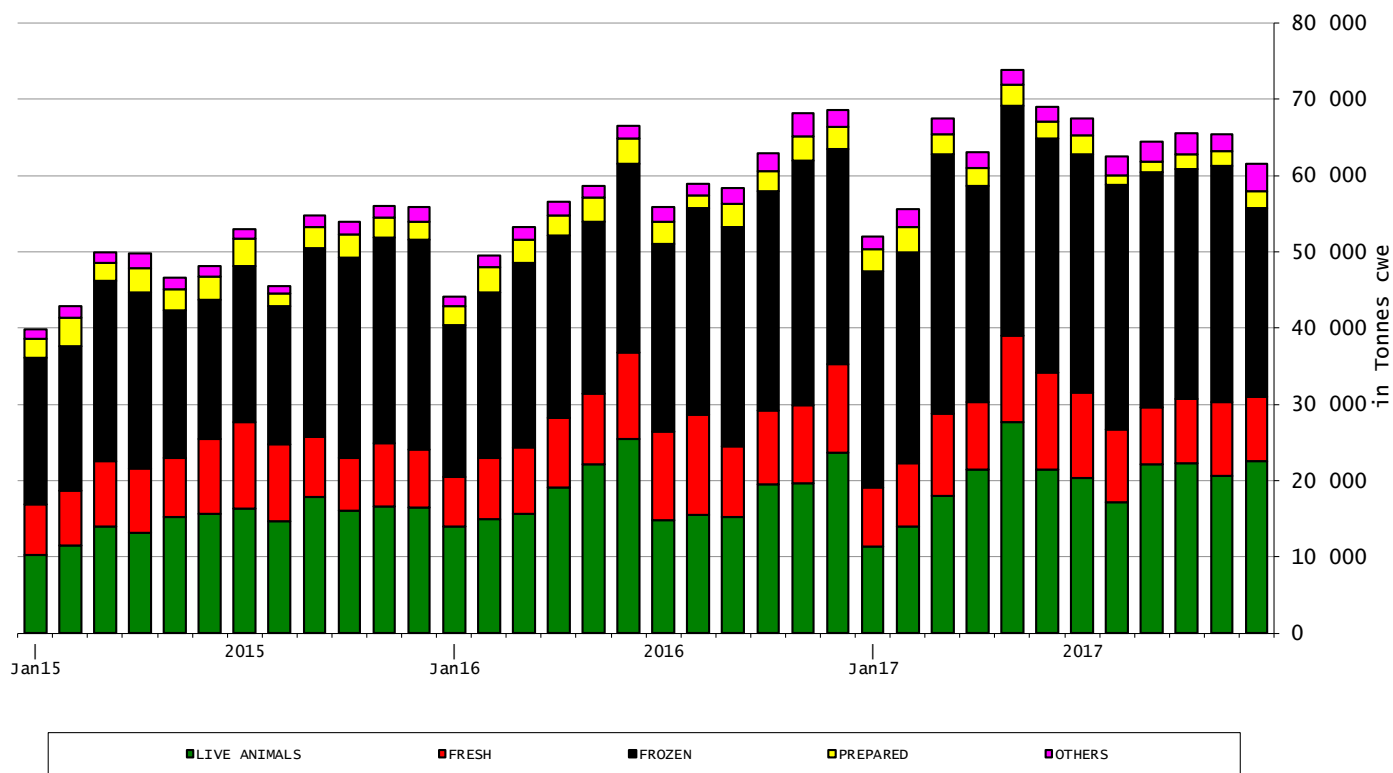
EU EXPORTS of Beef & Veal (Tonnes cwe)



EU EXPORTS of Beef & Veal (Millions EUR)



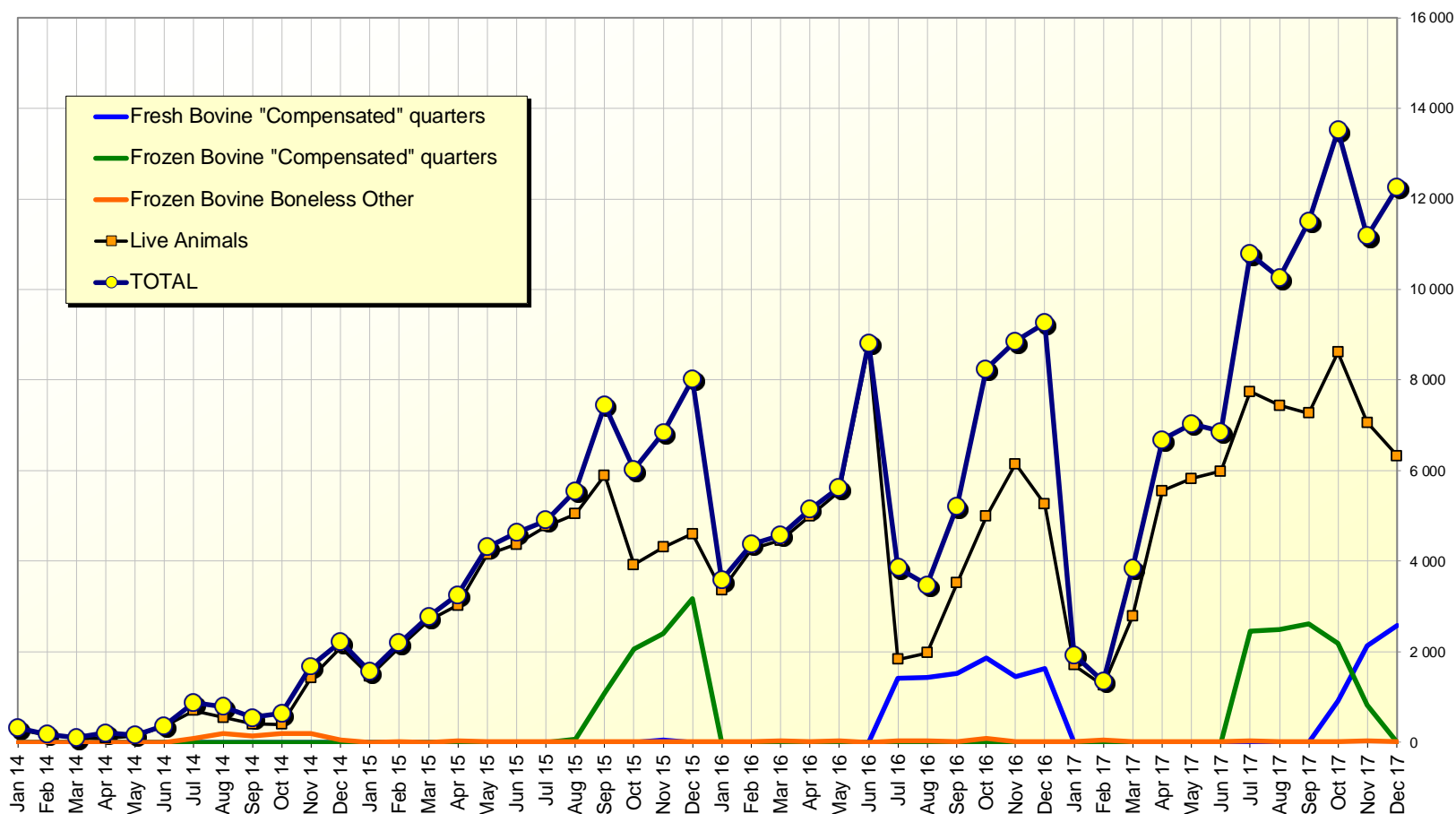
EU-28 Exports of BEEF products





European
Commission

EU beef Exports to TURKEY Trade figures (COMEXT data) *tonnes cwe*

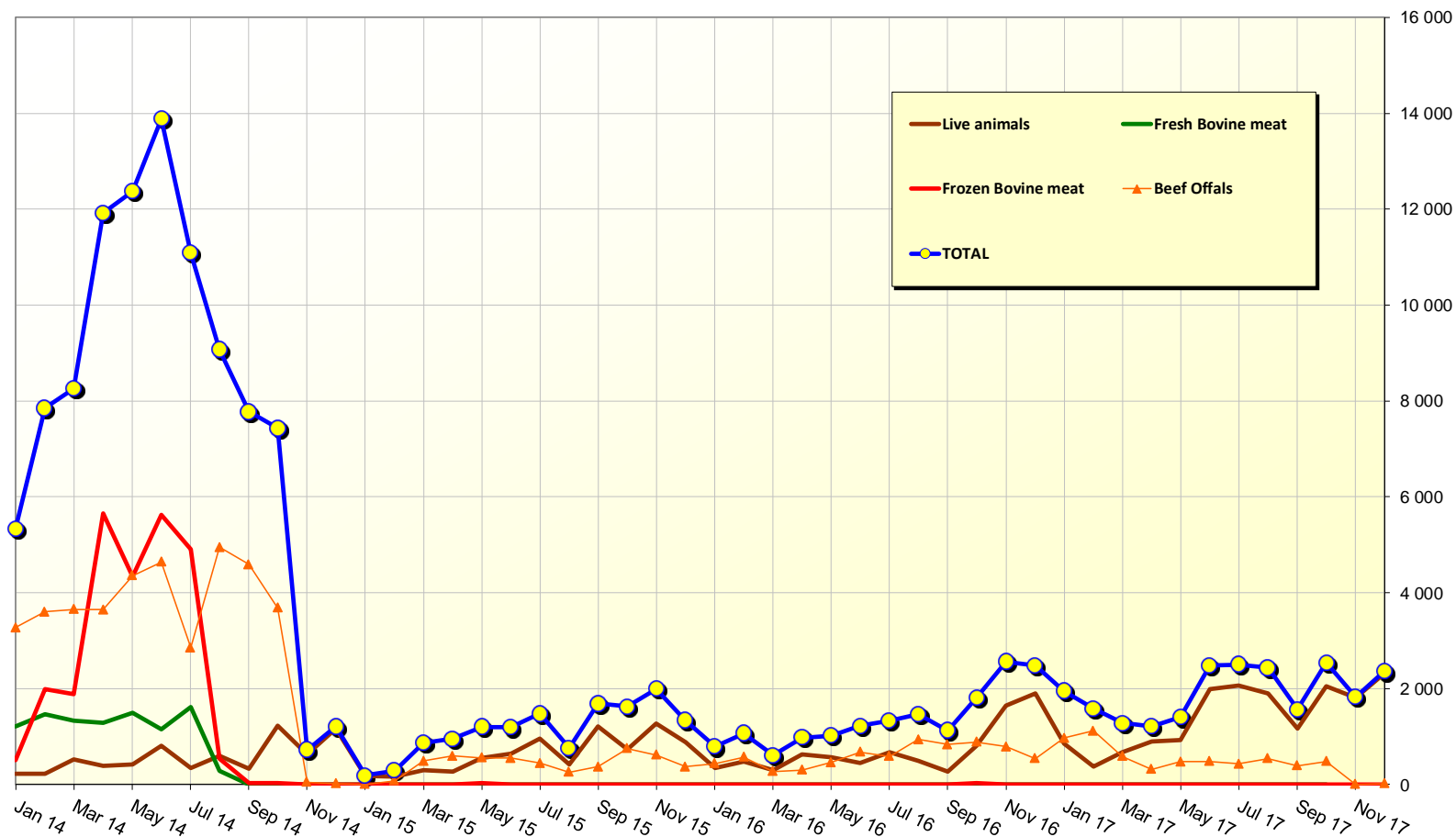


06 March 2018



European
Commission

EU beef Exports to RUSSIA Trade figures (COMEXT data) tonnes cwe

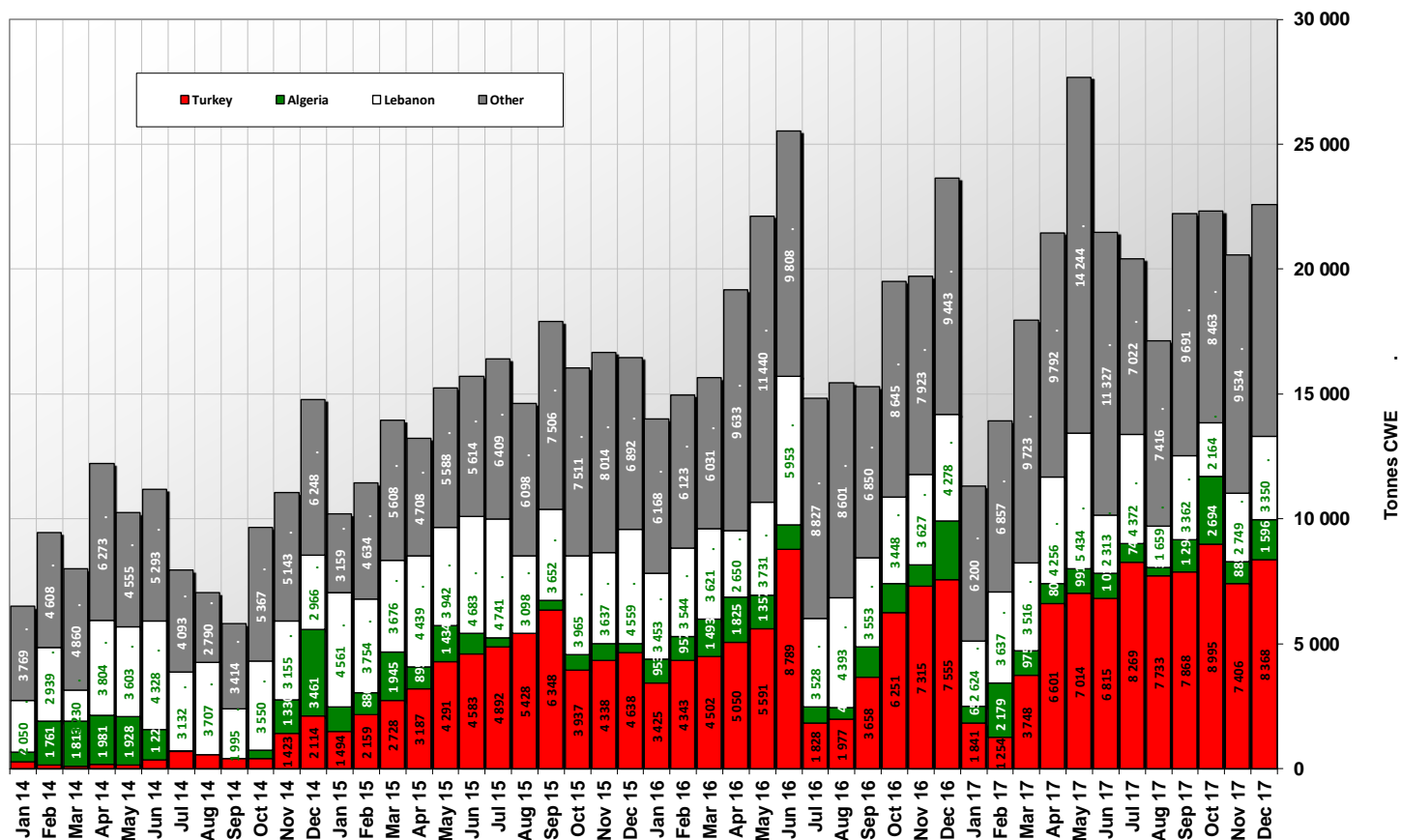


06 March 2018



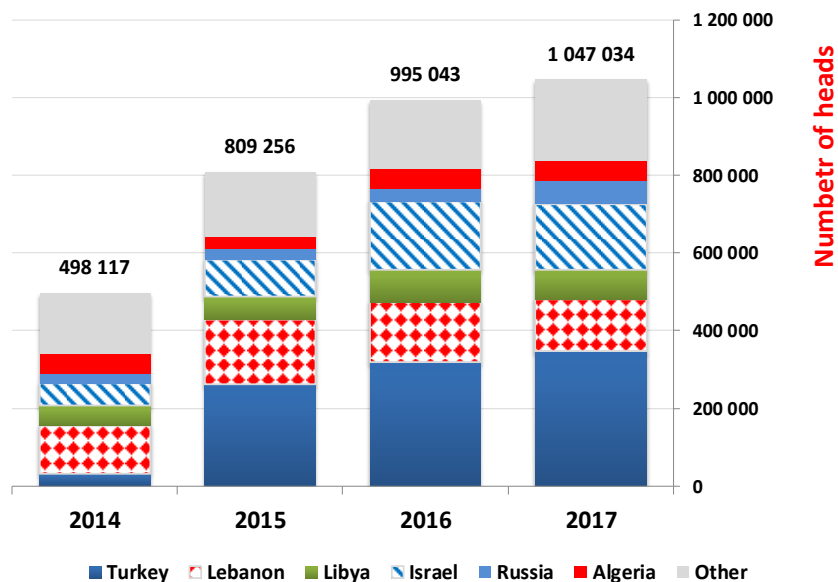
EU-28 Exports of LIVE Bovine Animals

(Source COMEXT - Tonnes cwe)

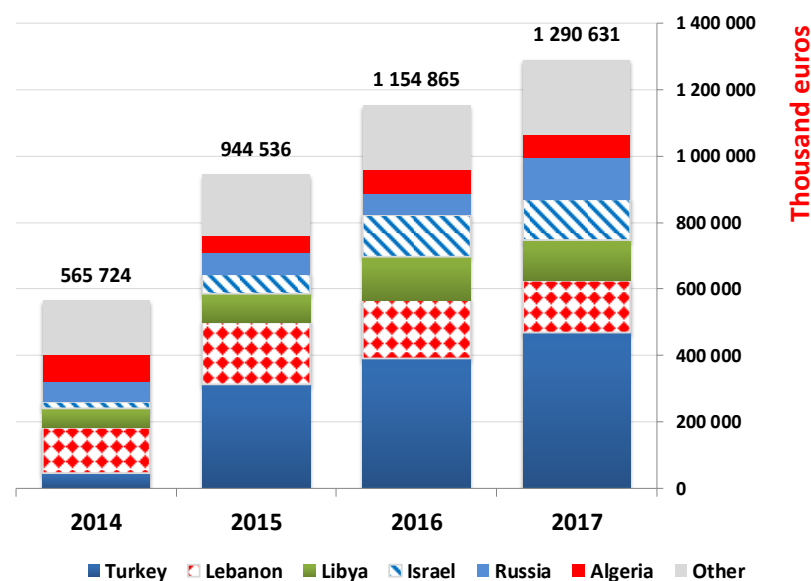


06 March 2018

EU Exports of BEEF live animals by partner for the period Jan-Dec 2017



EU Exports of BEEF live animals by partner for the period Jan-Dec 2017



EU imports of beef and live animals (1): Trade figures (COMEXT – tonnes cwe)

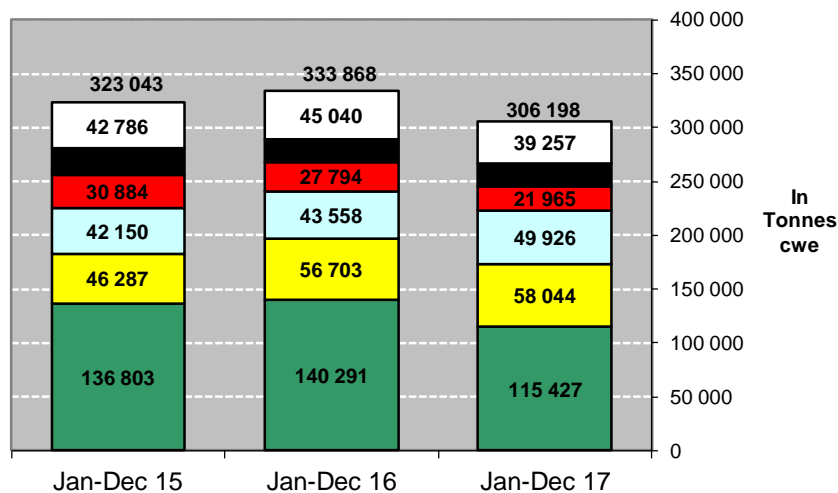
Origins	2013		2014		2015		2016		Jan-Dec 17		Compared to Jan-Dec 16
	tonnes	%	tonnes	%	tonnes	%	tonnes	%	tonnes	%	
Brazil	145 435	43.5%	144 259	43.4%	136 803	42.3%	140 592	42.1%	115 427	37.7%	- 17.7%
Uruguay	51 377	15.4%	49 043	14.8%	46 287	14.3%	56 708	17.0%	58 044	19.0%	+ 2.4%
Argentina	47 976	14.3%	42 074	12.7%	42 149	13.0%	43 557	13.0%	49 926	16.3%	+ 14.6%
Australia	28 074	8.4%	32 653	9.8%	30 884	9.6%	27 794	8.3%	21 965	7.2%	- 21.0%
USA	22 297	6.7%	23 234	7.0%	24 132	7.5%	20 503	6.1%	21 578	7.0%	+ 5.4%
New Zealand	13 827	4.1%	14 432	4.3%	11 380	3.5%	10 056	3.0%	8 112	2.6%	- 18.1%
Botswana	6 280	1.9%	6 424	1.9%	9 258	2.9%	9 382	2.8%	7 737	2.5%	- 17.5%
Namibia	11 113	3.3%	9 994	3.0%	12 112	3.7%	10 685	3.2%	7 705	2.5%	- 27.9%
Paraguay	0	0.0%	0	0.0%	1 915	0.6%	5 947	1.8%	6 914	2.3%	+ 16.3%
Switzerland	4 284	1.3%	5 456	1.6%	5 090	1.6%	5 498	1.6%	5 139	1.7%	- 6.6%
Japan	3	0.0%	100	0.0%	359	0.1%	578	0.2%	648	0.2%	+ 12.1%
Serbia	619	0.2%	425	0.1%	439	0.1%	557	0.2%	627	0.2%	+ 12.5%
Canada	965	0.3%	780	0.2%	428	0.1%	425	0.1%	513	0.2%	+ 21.7%
Norway	201	0.1%	347	0.1%	481	0.1%	277	0.1%	391	0.1%	+ 41.2%
Ukraine	0	0.0%	570	0.2%	20	0.0%	317	0.1%	374	0.1%	+ 18.0%
Chile	537	0.2%	875	0.3%	713	0.2%	606	0.2%	324	0.1%	- 46.5%
Russia	150	0.0%	941	0.3%	53	0.0%	31	0.0%	130	0.0%	+++
Other Origins	1 490	0.4%	755	0.2%	544	0.2%	818	0.2%	644	0.2%	
Extra-EU	334 630		332 362		323 043		334 331		306 198		
% change			- 1%		- 3%		+ 3%		- 8.3%		

06 March 2018



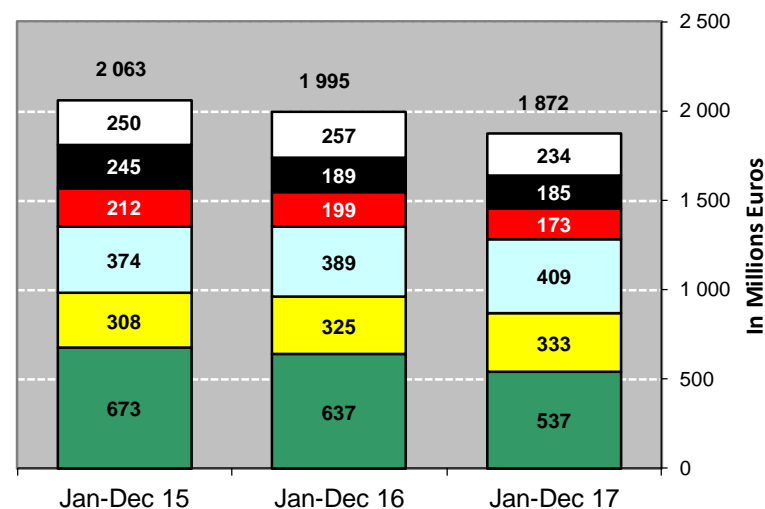
EU imports of beef and live animals (2): Trade figures (COMEXT)

IMPORTS of Beef & Veal into EU (Tonnes cwe)



■ Brazil ■ Uruguay ■ Argentina ■ Australia ■ USA ■ Other Destinations

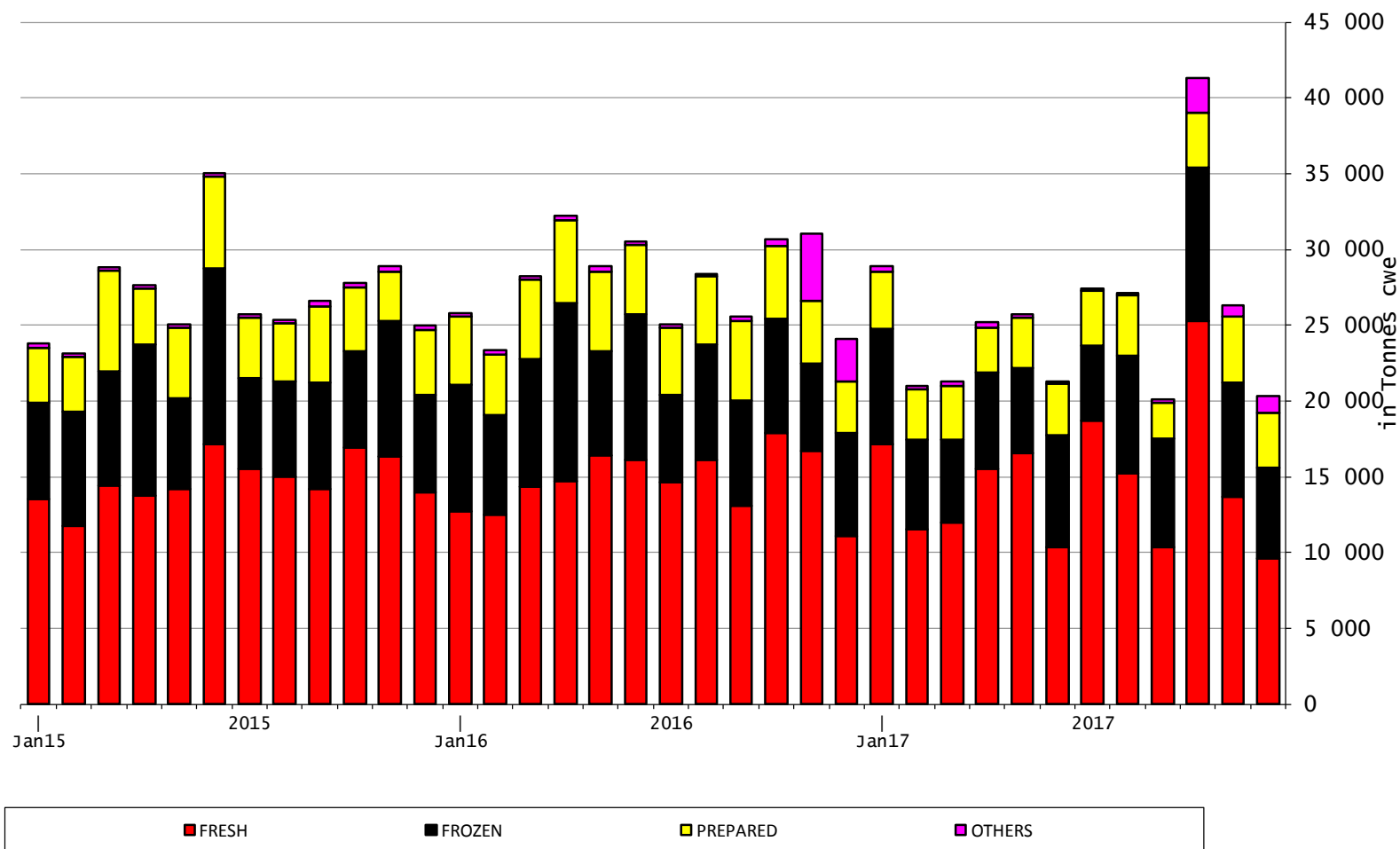
IMPORTS of Beef & Veal into EU (Millions EUR)



■ Brazil ■ Uruguay ■ Argentina ■ Australia ■ USA ■ Other Destinations



EU-28 Imports of BEEF products

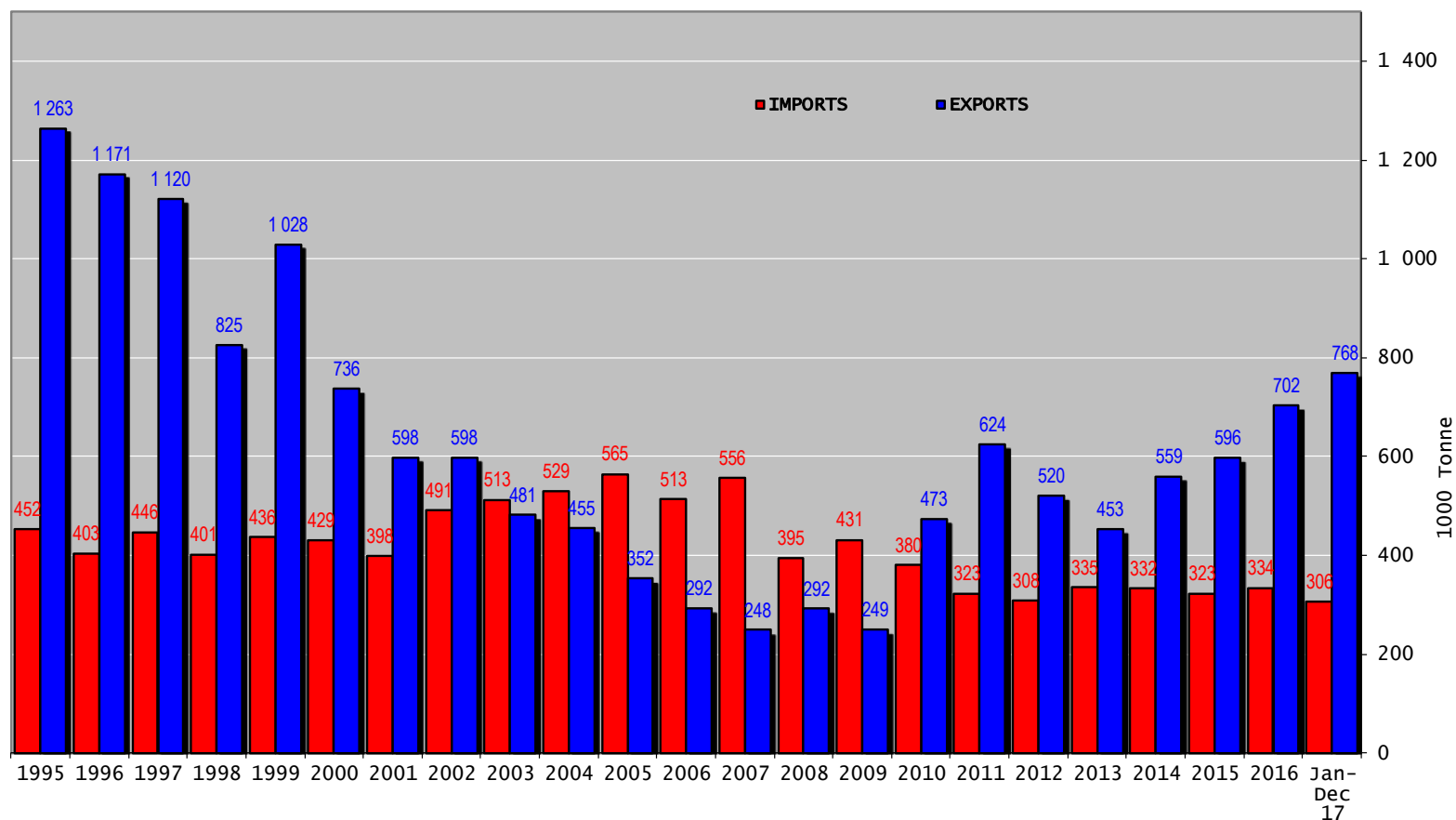


06 March 2018



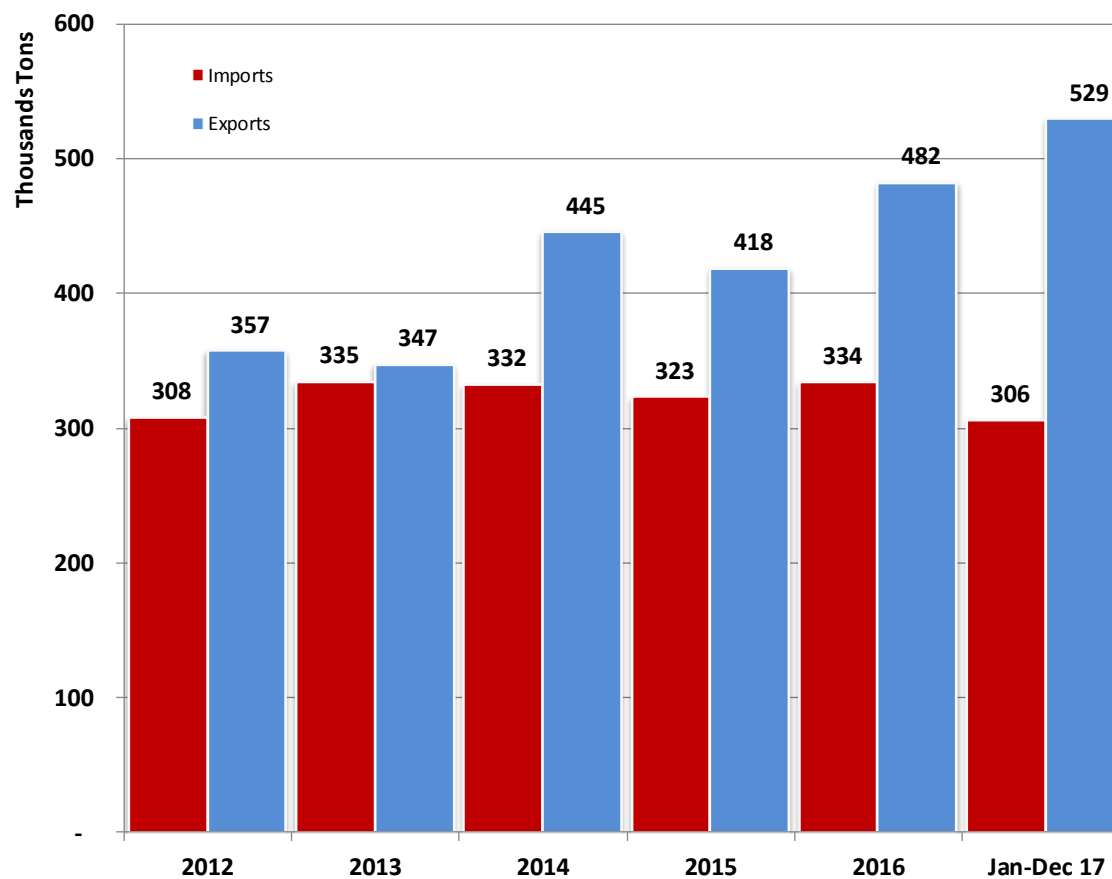
European
Commission

Trade balance of beef and live animals



06 March 2018

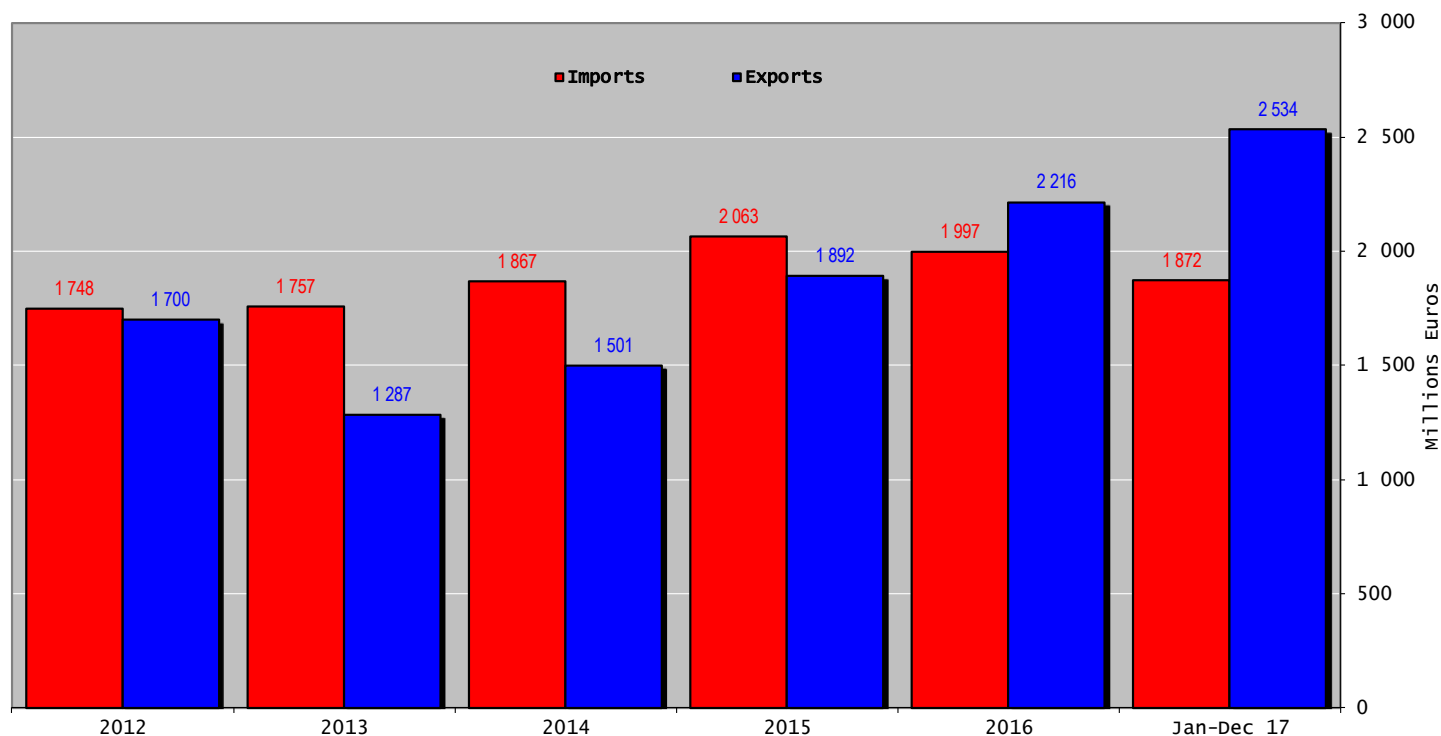
EU Trade of Beef Products (except Live Animals)



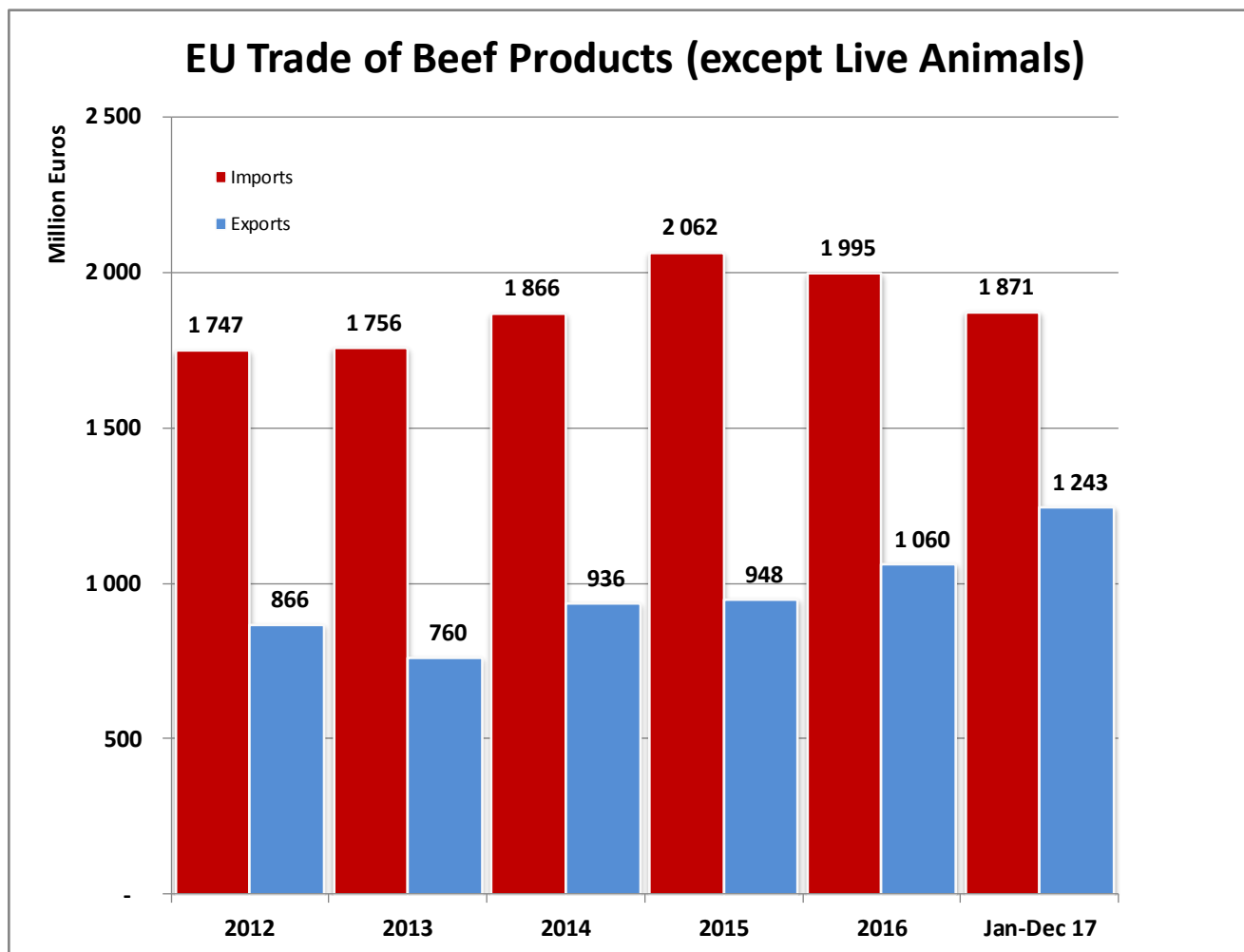
06 March 2018



Trade balance of beef and live animals

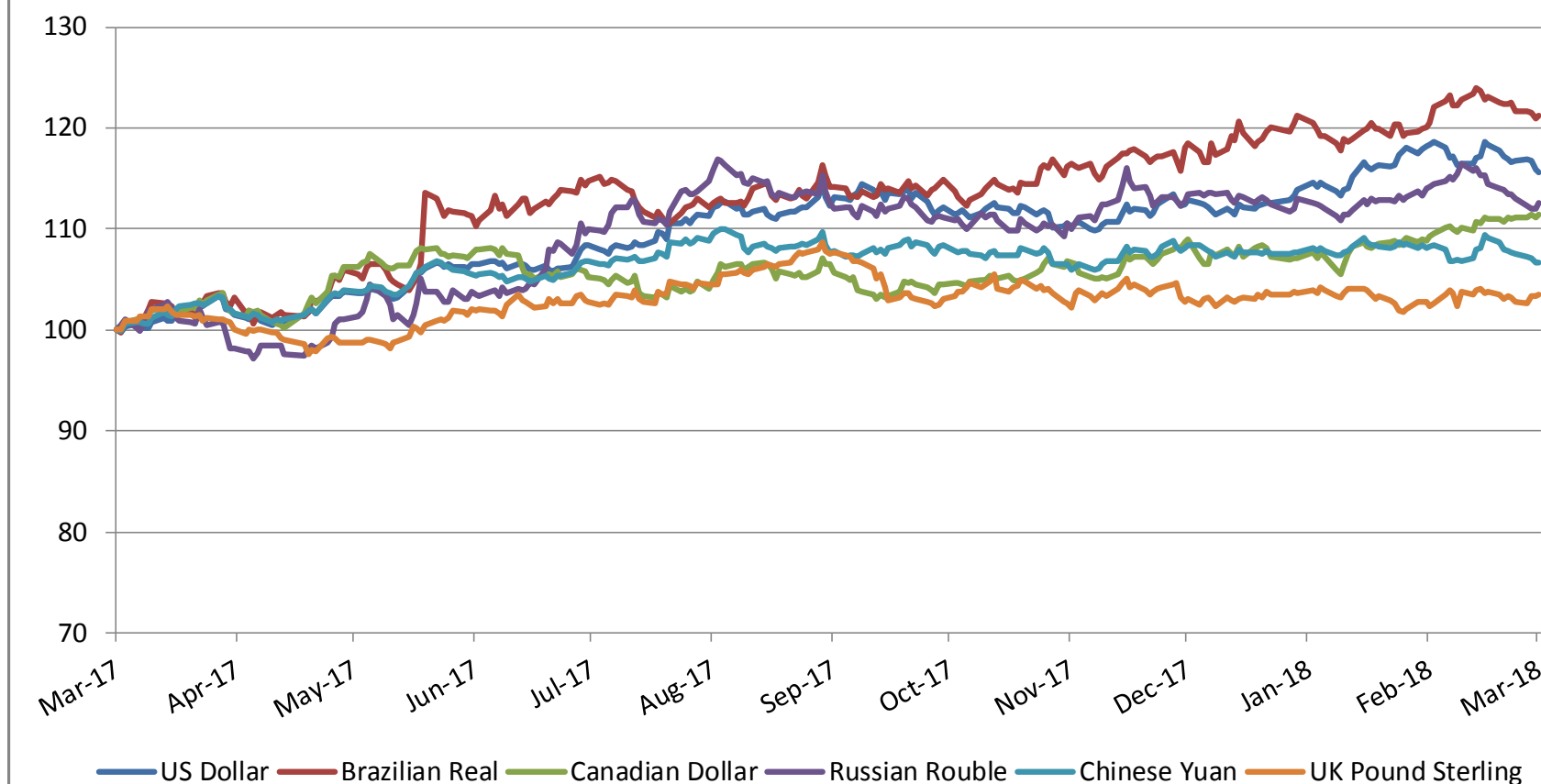


06 March 2018



06 March 2018

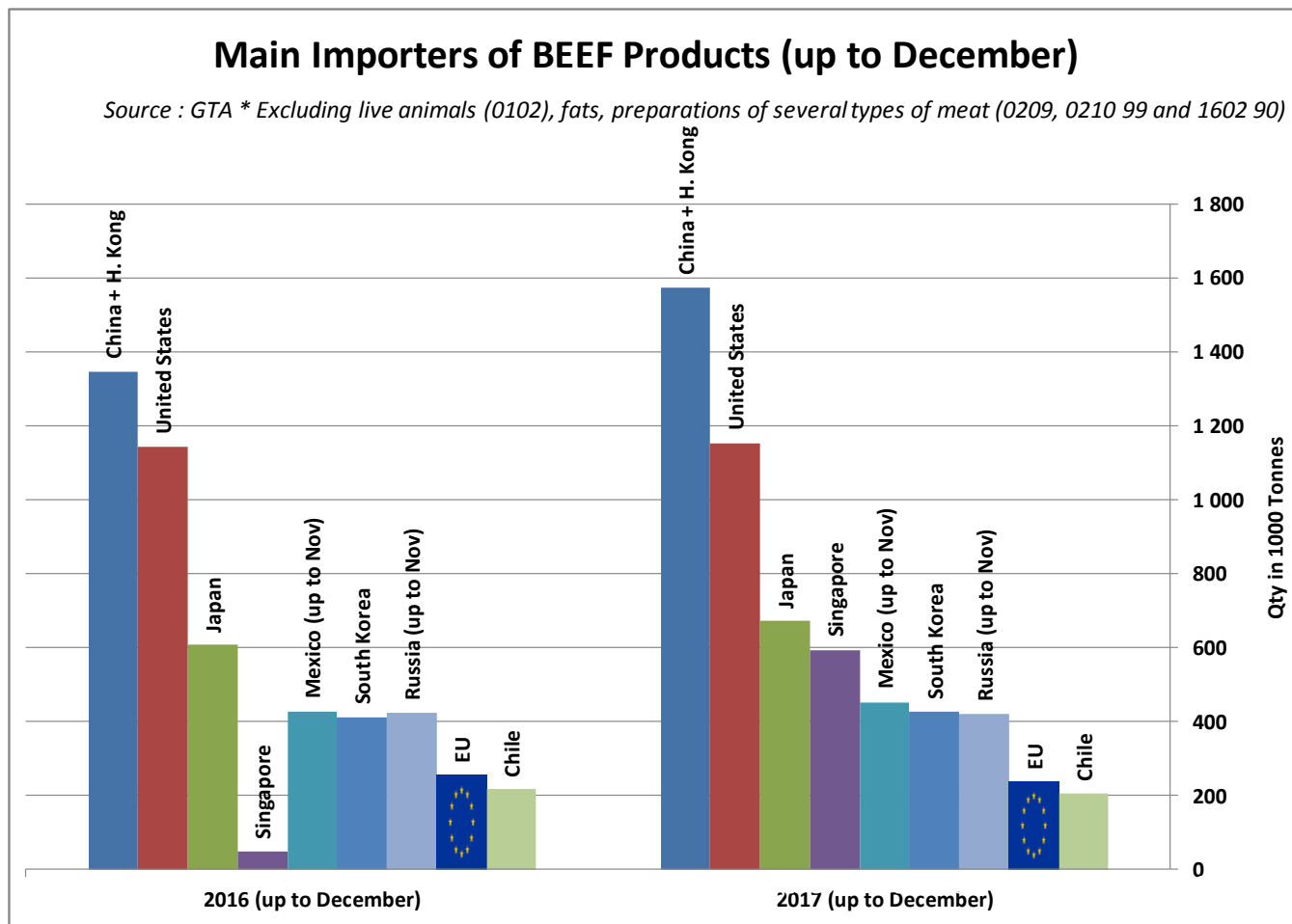
Index of daily exchange rates of the main trading partners compared to the Euro



06 March 2018

Source : GTA

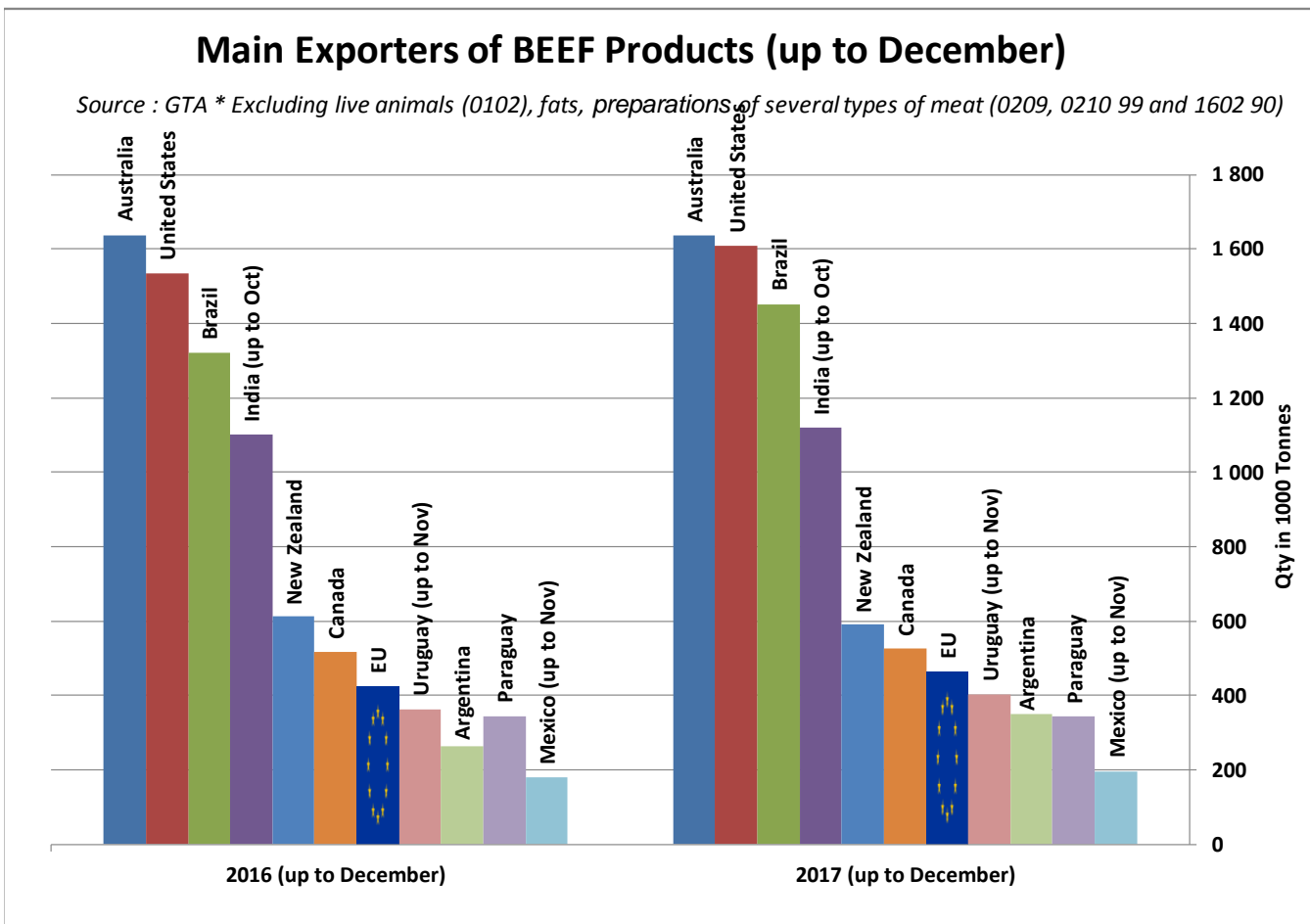
* Excluding live animals (0102), fats, preparations of several types of meat (0209, 0210 99 and 1602 90)



06 March 2018

Source : GTA

* Excluding live animals (0102), fats, preparations of several types of meat (0209, 0210 99 and 1602 90)

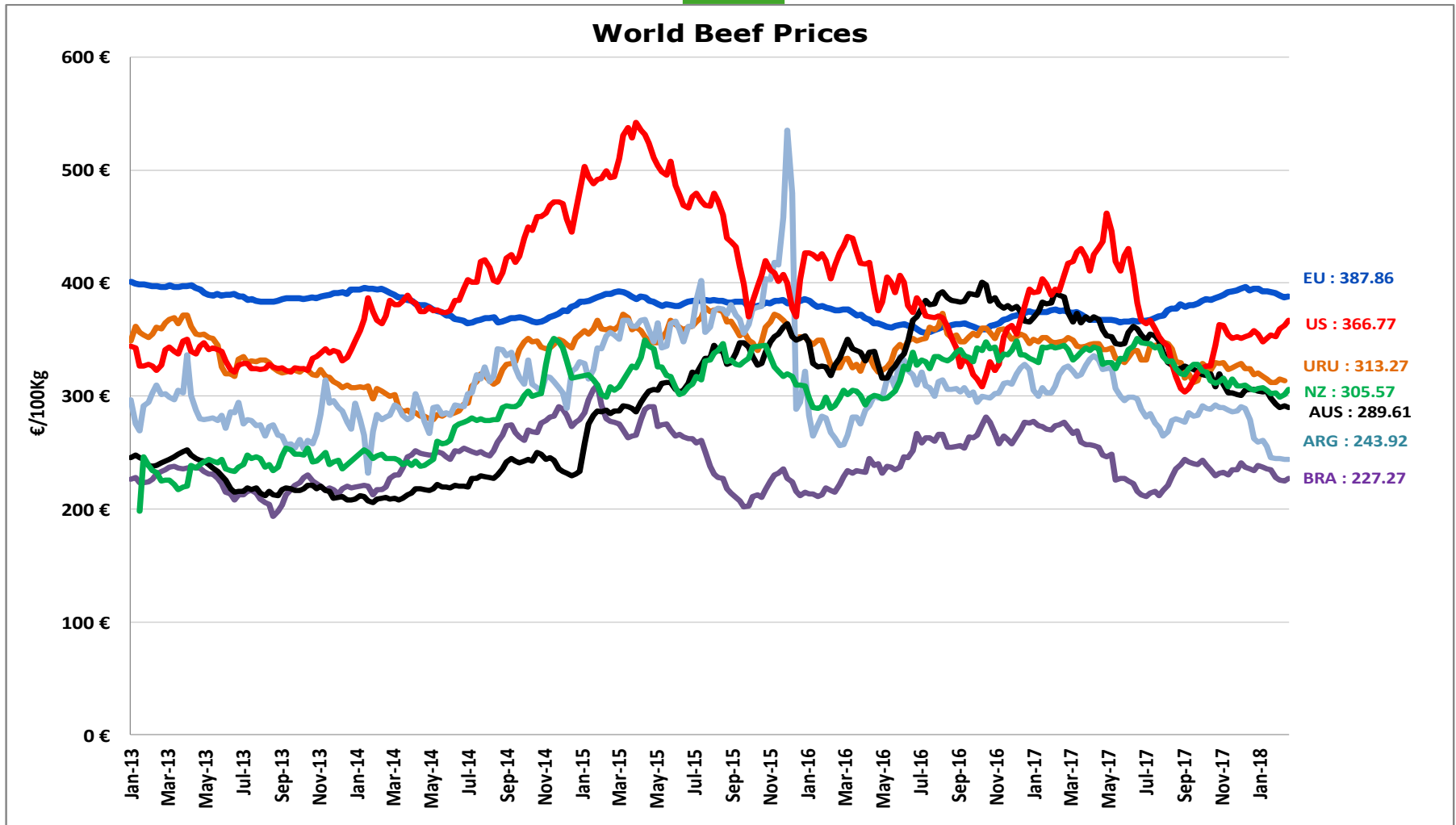


06 March 2018

WORLD BEEF MARKET



STEER PRICES EU, US, AUS, NZ



06 March 2018

NZ

http://www.abc-consorcio.com.ar/Estadisticas/detalle/117/precios_comparativos_del_novillo.html

High Quality Beef Import Quotas



Hilton Quota		Regulation (EU) N° 593/2013								
		Quantity allocated (Tons)	2014/2015		2015/2016		2016/2017		2017/2018*	
			Use		Use		Use		Use	
09.4001	Australia	2 250								
09.4004	Argentina	200	9.46	4.73%	12.21	6.11%	12.75	6.38%	9.01	4.51%
09.4450	Argentina	29 500	22 867.03	77.52%	22 350.61	75.76%	23 111.89	78.35%	14 231.16	48.24%
09.4451	Australia	7 150	6 815.93	95.33%	6 749.85	94.40%	4 051.04	56.66%	3 297.65	46.12%
09.4452	Uruguay	6 376	6 280.98	98.51%	6 249.09	98.01%	6 365.55	99.84%	3 611.74	56.65%
09.4453	Brazil	10 000	7 989.89	79.90%	9 289.17	92.89%	8 572.40	85.72%	3 796.15	37.96%
09.4454	New Zealand	1 300	1 299.45	99.96%	1 299.95	100.00%	1 161.63	89.36%	594.87	45.76%
09.4002	Canada/US	11 500	353.46	3.07%	292.16	2.54%	421.40	3.66%	1 242.17	10.80%
09.4455	Paraguay	1 000	12.13	1.21%	915.63	91.56%	982.60	98.26%	599.31	59.93%
Total Beef		66 826	45 618.87	68.27%	47 146.46	70.55%	44 666.51	66.84%	27 373.05	40.96%
Total Buffalo		2 450	9.46	0.39%	12.21	0.50%	12.75	0.52%	9.01	0.37%
Total		69 276	45 628.33	65.86%	47 158.67	68.07%	44 679.26	64.49%	27 382.06	39.53%

* up to 31/12/2017

06 March 2018

High Quality Beef Import Quotas



European
Commission

Quota erga omnes

Regulation (EU) No 481/2012

	2013-Q3	2013-Q4	2014-Q1	2014-Q2	TOTAL
Period 2013-2014	10 198 942	10 493 437	10 191 527	10 282 860	41 166 765
Available	12 050 000	12 050 000	12 050 000	12 050 000	48 200 000
Use	84.64%	87.08%	84.58%	85.33%	85.41%

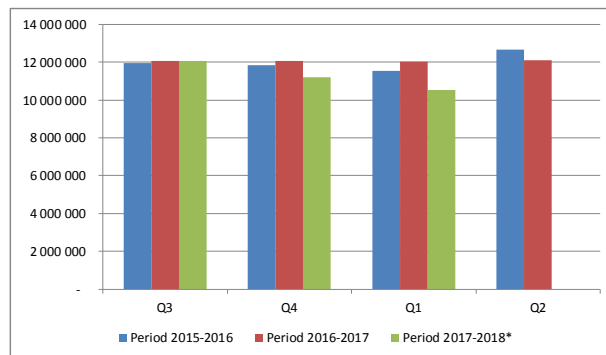
	2014-Q3	2014-Q4	2015-Q1	2015-Q2	TOTAL
Period 2014-2015	11 842 700	11 745 231	11 353 830	12 457 389	47 399 150
Available	12 050 000	12 050 000	12 050 000	12 050 000	48 200 000
Use	98.28%	97.47%	94.22%	103.38%	98.34%
Available after transfer	12 050 000	12 257 300	12 562 069	13 258 240	
	98.28%	95.82%	90.38%	93.96%	

	2015-Q3	2015-Q4	2016-Q1	2016-Q2	TOTAL
Period 2015-2016	11 952 185	11 851 187	11 535 011	12 664 673	48 003 056
Available	12 050 000	12 050 000	12 050 000	12 050 000	48 200 000
Use	99.19%	98.35%	95.73%	105.10%	99.59%
Available after transfer	12 050 000	12 147 815	12 346 627	12 861 617	
	99.19%	97.56%	93.43%	98.47%	

	2016-Q3	2016-Q4	2017-Q1	2017-Q2	TOTAL
Period 2016-2017	12 059 567	12 062 828	12 015 258	12 088 771	48 226 423
Available	12 050 000	12 050 000	12 050 000	12 050 000	48 200 000
Use	100.00%	100.00%	99.71%	100.00%	100.00%
Available after transfer	12 050 000	12 040 433	12 027 606	12 062 348	
	100.00%	100.00%	99.90%	100.00%	

	2017-Q3	2017-Q4	2018-Q1	2018-Q2	TOTAL
Period 2017-2018*	12 051 815	11 190 965	10 509 351		33 752 131
Available	12 050 000	11 161 000	11 250 000	11 250 000	48 200 000
Use	100.00%	100.00%	93.42%		70.03%
Available after transfer	12 050 000	11 159 185	11 220 035		
	100.00%	100.00%	93.67%		

* Until 15.02.2018




06 March 2018

CETA

Beef Import Quotas



<div></div> <div>Import quota Bovine meat sector Allocated and available quantities - Calendar year based quotas</div>															
Commission Regulation	Product	Order Nr	Origin	ANNUAL DATA			SUBPERIOD ALLOCATION			Available next allocation	SUBPERIOD ALLOCATION			Available next allocation	
				Available volume	Total allocated quantity	Allocated part of available volume	Available volume	Allocated quantity	Allocated part of available volume		Available volume	Allocated quantity	Allocated part of available volume		
JANUARY - DECEMBER 2018 MANAGEMENT PERIOD WITH QUARTERLY / MONTHLY ALLOCATION															
				(kgs)	(kgs)	(%)	Quota 09.4280 - BEEF Canada - fresh/chilled				Quota 09.4281 - BEEF Canada - frozen				
2015/1585	Beef (excl.bison) fresh/chilled	09.4280	Canada	14 440 000	238 500	1,7%	JANUARY - MARCH 2018								
	Beef (excl.bison) frozen	09.4281	Canada	5 000 000	0	0,0%	1 st allocation Jan - Mar 2018	3 610 000	97 000	2,7%	3 513 000	1 250 000	0	0,0%	1 250 000
							final allocation Jan - Mar 2018	3 513 000	1 500	0,0%	7 121 500	1 250 000	0	0,0%	2 500 000
							APRIL - JUNE 2018								
						1 st allocation Apr - Jun 2018	7 121 500	140 000	2,0%	6 981 500	2 500 000	0	0,0%	2 500 000	

06 March 2018