



European  
Commission

June 2021

## Statistical Factsheet

# Italy



### CONTENTS

Main figures	1
1. KEY DATA	2
2. POPULATION & ECONOMY	3-4
3. FINANCIAL ASPECTS	5-6
4. ECONOMIC ACCOUNTS	7-13
5. AGRICULTURAL TRADE	14-15
6. FARM STRUCTURE	16-18

Main figures - Year 2020		
Population (1 <sup>st</sup> January)	59 641 488	persons
Area*	302 073	km <sup>2</sup>
Currency	EUR	euro
Nominal GDP at current prices	1 651 595	million EUR
GDP per capita at current prices	27 084	EUR
GDP per capita at purchasing power	27 500	PPS
Harmonised index of consumer prices	-0.1%	change over previous year
Unemployment rate	9.9	% of labour force
Exports (goods & services)	466 072	million EUR (current prices)
Imports (goods & services)	421 846	million EUR (current prices)
Balance (goods & services)	44 227	million EUR (current prices)
Exports of agricultural products	46 158	million EUR (current prices)
Imports of agricultural products	38 676	million EUR (current prices)
Current account balance	2.9	% of GDP
General government balance	-10.8	% of GDP
General government gross debt	159.6	% of GDP

Sources: European Commission, Eurostat (Online Data Table: [urt\\_d3area](#), [urt\\_pjanaggr3](#)), and Directorate General for Economic and Financial Affairs.

\*Data refer to the year 2016

(e) Estimation

Updated: June 2021

## 1. KEY DATA

Macroeconomics				
<b>Population</b>				
<b>Total population (number of persons), of which:</b>	<b>2020</b>	<b>59 641 488</b>	<b>13.3%</b>	<b>of EU27_2020</b>
in predominantly rural regions	2020	9.9%	20.8%	in EU27_2020
in intermediate regions	2020	43.0%	38.9%	in EU27_2020
in predominantly urban regions	2020	47.2%	40.3%	in EU27_2020
<b>Population in Predominantly rural regions (Persons)</b>	<b>2020</b>	<b>5 885 082</b>	<b>6.3%</b>	<b>of EU27_2020</b>
<b>GDP (current basic prices)</b>				
Total (million EUR)	2020	1 651 595	12.4%	of EU27_2020
GDP per capita (EUR/person)	2020	27 084	29 355	in EU27_2020
GDP per capita (PPS/person)	2020	27 500	29 700	in EU27_2020
Real GDP growth rate (% change over previous year)	2020	-9.9%	-7.4%	in EU27_2020
<b>Gross value added</b>				
Agriculture, forestry and fishing (% of total GVA)	2020	2.2%	1.9%	in EU27_2020
<b>Financial aspects</b>				
<b>Common Agricultural Policy expenditure</b>				
<b>Total expenditure (million EUR), of which:</b>	<b>2020</b>	<b>5 778</b>	<b>10.6%</b>	<b>of EU27_2020</b>
Direct payments (%)	2020	62.3%	69.9%	in EU27_2020
Market measures (%)	2020	11.7%	4.6%	in EU27_2020
Rural development (%)	2020	26.0%	25.5%	in EU27_2020
<b>Economic accounts of agriculture</b>				
<b>Agricultural output (current basic prices)</b>				
<b>Agricultural output (million EUR), of which:</b>	<b>2020 (e)</b>	<b>51 802</b>	<b>13.1%</b>	<b>of EU27_2020</b>
<b>Crop output, of which:</b>		<b>60.6%</b>	<b>14.4%</b>	<b>of EU27_2020</b>
Cereals (including seeds)		7.5%	8.5%	of EU27_2020
Industrial crops		1.6%	4.4%	of EU27_2020
Forage plants		3.3%	6.9%	of EU27_2020
Vegetables and horticultural products		18.8%	16.9%	of EU27_2020
Potatoes		1.3%	5.4%	of EU27_2020
Fruits		10.0%	17.5%	of EU27_2020
Wine		14.9%	34.6%	of EU27_2020
Olive oil		2.6%	37.1%	of EU27_2020
<b>Animal output, of which:</b>		<b>29.7%</b>	<b>9.7%</b>	<b>of EU27_2020</b>
Cattle		5.4%	10.1%	of EU27_2020
Pigs		5.4%	7.1%	of EU27_2020
Sheep and goats		0.3%	4.1%	of EU27_2020
Poultry		4.7%	12.6%	of EU27_2020
Milk		9.8%	9.4%	of EU27_2020
Eggs		2.7%	15.2%	of EU27_2020
Gross value added at current prices (million EUR)	2020 (e)	31 449	17.8%	of EU27_2020
<b>Agricultural input (current basic prices)</b>				
Total intermediate consumption (million EUR)	2020 (e)	24 872	10.6%	of EU27_2020
<b>Agricultural income (real prices)</b>				
Agricultural Income*(% change over previous year, 2010=100)	2020 (e)	-4.9%	-1.2%	in EU27_2020
<b>Farm structure</b>				
<b>Holdings</b>				
<b>Total (No), of which:</b>	<b>2016</b>	<b>1145 710</b>	<b>11.1%</b>	<b>of EU27_2020</b>
UAA < 5 ha (%)	2016	61.9%	66.6%	in EU27_2020
Economic size < 4 000 €	2016	29.5%	54.9%	in EU27_2020
Holder < 35 years (%)	2016	4.1%	5.1%	in EU27_2020
Holder > 64 years (%)	2016	40.9%	32.8%	in EU27_2020
UAA per holding (ha)	2016	11.0	15.2	in EU27_2020
<b>Labour force</b>				
AWU (No)	2016	897 090	10.2%	of EU27_2020
Female farm holders (%)	2016	33.7%	30.7%	in EU27_2020
Male farm holders (%)	2016	66.3%	68.8%	in EU27_2020
Agriculture in % of total employment	2020	3.8%	4.0%	in EU27_2020

Sources: European Commission(Ameco), Eurostat(Online Data Table: urt\_pjanaggr3, aact\_eaa01, ef\_m\_farmleg, ef\_m\_farmang, ef\_if\_main, lfsa\_egan2) and Directorate General for Agriculture and Rural Development.

\*Indicator A- See definition at page 10

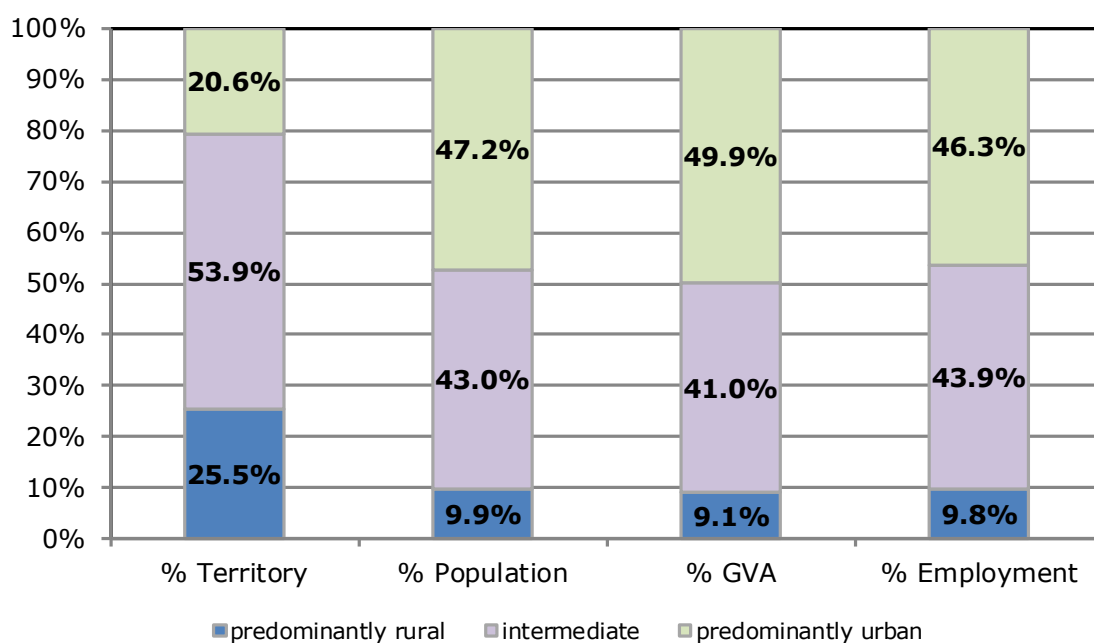
## 2. POPULATION AND ECONOMY

### Importance of rural areas

	Territory (km <sup>2</sup> )	Population (persons)	GVA (Million EUR)	Employment (persons)
Year	2016	2020	2018	2019
Predominantly Rural Regions	77 048	5 885 082	143 978	2 227 700
Intermediate Regions	162 876	25 623 499	651 296	9 961 800
Predominantly Urban Regions	62 149	28 132 907	792 593	10 497 600
<b>Total</b>	<b>302 073</b>	<b>59 641 488</b>	<b>1 587 867</b>	<b>22 687 100</b>

Source: Eurostat (Online Data Table: urt\_d3area, urt\_pjanagr3, urt\_10r\_3gva, urt\_lfe3emp)

Updated: June 2021



Degree of urbanisation	Share of land (%)	Share of population (%)
	2018	2018
Rural areas	61.3%	17.8%
Towns and suburbs	32.7%	47.6%
Cities	6.0%	34.6%

Source: Eurostat, GISCO

\*Based on 2011 population grid, LAU 2018 delineation and NUTS 2016.

## 2. POPULATION AND ECONOMY

## Economic forecast

Indicators	2013	2014	2015	2016	2017	2018	2019	2020	2021(f)	2022(f)
<b>GDP</b>										
In million EUR (current prices)	1 612 751	1 627 406	1 655 355	1 695 787	1 736 593	1 771 566	1 790 942	1 651 595	1 735 317	1 833 155
Per capita (in PPS; current prices)	26 000	25 900	26 500	27 700	28 600	29 200	29 600	27 500	29 100	30 800
<b>% change over previous period</b>										
GDP growth at constant prices (2015=100)	-1.8%	0.0%	0.8%	1.3%	1.7%	0.9%	0.3%	-9.9%	4.1%	2.8%
GDP deflator (2015=100)	1.1%	0.9%	0.9%	1.1%	0.7%	1.0%	0.7%	1.3%	1.0%	1.2%
Harmonised index of consumer prices	1.2%	0.2%	0.1%	-0.1%	1.3%	1.2%	0.6%	-0.1%	0.7%	1.0%
Exports (goods and services)	0.4%	2.6%	4.3%	1.9%	5.4%	2.2%	1.0%	-16.7%	10.3%	5.9%
Imports (goods and services)	-2.7%	3.5%	6.5%	3.9%	6.1%	3.5%	-0.6%	-14.1%	9.9%	6.4%
<b>Net exports of goods and services (million EUR)</b>	<b>38 688</b>	<b>47 122</b>	<b>49 889</b>	<b>55 761</b>	<b>49 724</b>	<b>42 336</b>	<b>54 613</b>	<b>44 227</b>	<b>51 939</b>	<b>55 734</b>
<b>% of total employment</b>										
Unemployment rate	12.2	12.7	11.9	11.7	11.2	10.6	10.0	9.9	11.6	11.1
<b>% of GDP</b>										
Current account balance	1.1	1.9	1.4	2.6	2.6	2.5	3.0	2.9	3.1	2.9
General government balance	-2.9	-3.0	-2.6	-2.4	-2.4	-2.2	-1.6	-10.8	-7.8	-6.0
General government gross debt	132.5	135.4	135.3	134.8	134.1	134.4	134.7	159.6	159.5	159.1

Source: European Commission, Directorate General for Economic and Financial Affairs

Updated: June 2021

f: forecast

## 3.1. AGRICULTURE: FINANCIAL ASPECTS

### CAP expenditure

Measures	2020		2020	
	1 000 EUR		% of total	% of heading
Decoupled direct aids	3 062 680		53.0%	85.1%
Other direct aids	499 672		8.6%	13.9%
Additional amounts of aid	0		0.0%	0.0%
Reimbursement of direct aids in relation to financial discipline	36 781		0.6%	1.0%
<b>Direct payments (Total)</b>	<b>3 599 133</b>		<b>62.3%</b>	<b>100.0%</b>
Olive oil	23138		0.4%	3.4%
Textile plants	0		0.0%	0.0%
Fruit and vegetables	274 753		4.8%	40.6%
Wine sector	321 174		5.6%	47.4%
Promotion	19 151		0.3%	2.8%
Other plant products/measures			0.0%	0.0%
Milk and milk products	107		0.0%	0.0%
Beef and veal	0		0.0%	0.0%
Sheepmeat and goatmeat	0		0.0%	0.0%
Pigmeat, eggs, poultry and other	17 026		0.3%	2.5%
School schemes*	22 166		0.4%	3.3%
<b>Market measures (Total)</b>	<b>677 514</b>		<b>11.7%</b>	<b>100%</b>
<b>Rural development (Total)</b>	<b>1 501 763</b>		<b>26.0%</b>	<b>100%</b>
<b>TOTAL</b>	<b>5 778 411</b>		<b>100.0%</b>	

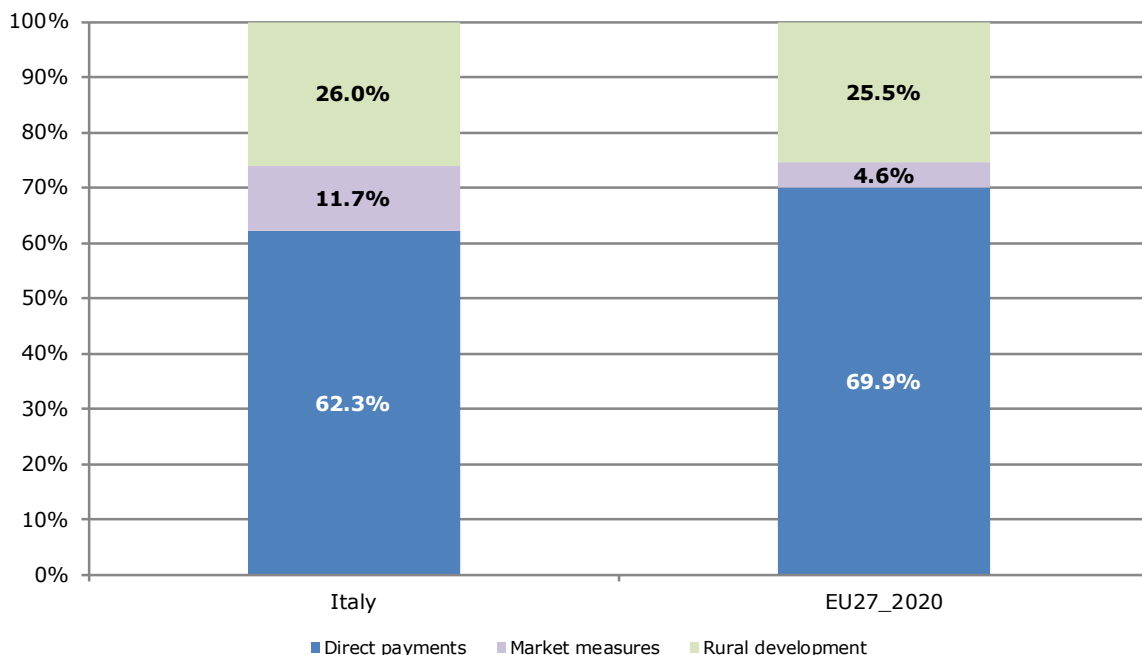
Note: Expenditure in commitments for direct payments and market measures; ceilings of support for rural development. Negative values represent beneficiaries that in total reimbursed money to the EAGF (recoveries, corrections, etc.)

\* Programme implementation based on school years; reimbursement possible in the next financial year

Source: European Commission, Directorate General for Agriculture and Rural Development

Updated: June 2021

### Distribution of CAP expenditure



## 3.2. AGRICULTURE: FINANCIAL ASPECTS

### Distribution of direct aids to the producers

Size-class of aid (all direct payments)	Financial year 2019*			
	Beneficiaries		Payments in EUR	
	x 1 000	% of total	x 1 000	% of total
< 0 €	0.68	0.09%	-492	0.0%
≥ 0 and < 500 €	142.49	17.92%	52 674	1.4%
≥ 500 and < 1 250 €	266.09	33.46%	217 861	6.0%
≥ 1 250 and < 2 000 €	94.66	11.90%	150 614	4.1%
≥ 2 000 and < 5 000 €	142.71	17.95%	451 350	12.4%
≥ 5 000 and < 10 000 €	70.27	8.84%	494 643	13.6%
≥ 10 000 and < 20 000 €	43.91	5.52%	612 897	16.8%
≥ 20 000 and < 50 000 €	25.34	3.19%	763 083	20.9%
≥ 50 000 and < 100 000 €	6.53	0.82%	442 358	12.1%
≥ 100 000 and < 150 000 €	1.46	0.18%	176 674	4.9%
≥ 150 000 and < 200 000 €	0.53	0.07%	90 077	2.5%
≥ 200 000 and < 250 000 €	0.23	0.03%	51 477	1.4%
≥ 250 000 and < 300 000 €	0.12	0.01%	32 084	0.9%
≥ 300 000 and < 500 000 €	0.13	0.02%	49 595	1.4%
≥ 500 000 €	0.06	0.01%	57 799	1.6%
<b>Total</b>	<b>795.19</b>	<b>100%</b>	<b>3 642 694</b>	<b>100%</b>

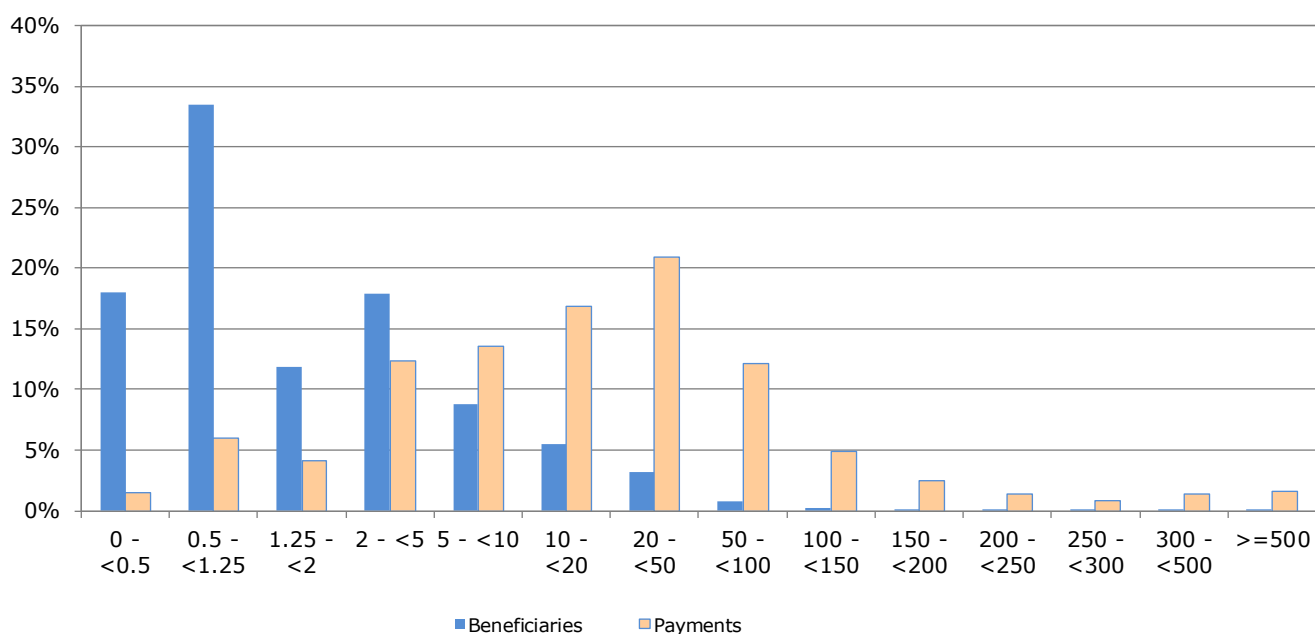
Source: European Commission, Directorate General for Agriculture and Rural Development.

\* Figures for financial year 2020 will become available during the second half of 2021. Negative values represent beneficiaries that in total reimbursed money to the EAGF (recoveries, corrections, etc.)

Note: In order to protect the anonymity of the beneficiaries, numbers less than 10 have been made invisible in this table.

Updated: June 2021

#### Indicative figures on the distribution of direct aid by size-class of aid (1 000 EUR)



## 4.1. AGRICULTURE: ECONOMIC ACCOUNTS

## Agricultural output

Output components (real prices)	2018	2019	2020 (e)		
	Million EUR	Million EUR	Million EUR	% of total	% of EU27_2020
<b>Cereals:</b>	<b>3364</b>	<b>3 339</b>	<b>3 500</b>	<b>8.3%</b>	<b>8.6%</b>
Wheat and spelt	1629	1 580	1 712	4%	9.0%
Rye and meslin	1	2	1	0%	0.1%
Barley	169	169	155	0%	2.1%
Oats and summer cereal mixtures	40	41	40	0%	2.8%
Grain maize	1074	1 043	1 126	3%	11.9%
Rice	265	309	287	1%	41.6%
Other cereals	185	195	180	0%	10.7%
<b>Industrial crops:</b>	<b>750</b>	<b>734</b>	<b>740</b>	<b>1.8%</b>	<b>4.5%</b>
Oil seeds and oleaginous fruits	349	298	314	1%	3.5%
Protein crops	148	163	157	0%	14.3%
Raw tobacco	152	181	179	0%	36.2%
Sugar beet	78	69	66	0%	3.9%
Other industrial crops	22	23	23	0%	0.6%
<b>Forage plants</b>	<b>1719</b>	<b>1 622</b>	<b>1 539</b>	<b>3.7%</b>	<b>7.0%</b>
<b>Vegetables and horticultural products</b>	<b>8278</b>	<b>8 916</b>	<b>8 744</b>	<b>20.8%</b>	<b>16.9%</b>
<b>Potatoes</b>	<b>532</b>	<b>619</b>	<b>592</b>	<b>1.4%</b>	<b>5.5%</b>
<b>Fruits</b>	<b>4673</b>	<b>4 190</b>	<b>4 659</b>	<b>11.1%</b>	<b>17.0%</b>
<b>Wine</b>	<b>8825</b>	<b>7 229</b>	<b>6 920</b>	<b>16%</b>	<b>34.6%</b>
<b>Olive oil</b>	<b>1245</b>	<b>1 603</b>	<b>1 220</b>	<b>3%</b>	<b>35.2%</b>
<b>Other crop products</b>	<b>248</b>	<b>251</b>	<b>247</b>	<b>1%</b>	<b>12.5%</b>
<b>Crop output</b>	<b>29 632</b>	<b>28 502</b>	<b>28 160</b>	<b>67.1%</b>	<b>14.5%</b>
<b>Animals:</b>	<b>8 657</b>	<b>8 519</b>	<b>7 962</b>	<b>19.0%</b>	<b>9.6%</b>
Cattle	2 723	2 642	2 503	6.0%	10.2%
Pigs	2 775	2 729	2 494	5.9%	7.1%
Equines	89	91	92	0.2%	10.6%
Sheep and goats	149	149	141	0.3%	4.0%
Poultry	2 288	2 284	2 177	5.2%	12.6%
Other animals	634	625	555	1.3%	27.2%
<b>Animal products:</b>	<b>5 660</b>	<b>5 826</b>	<b>5 839</b>	<b>13.9%</b>	<b>10.1%</b>
Milk	4 428	4 574	4 532	10.8%	9.5%
Eggs	1 166	1 183	1 237	2.9%	15.3%
Other animal products	66	68	70	0.2%	3.2%
<b>Animal output</b>	<b>14 317</b>	<b>14 345</b>	<b>13 801</b>	<b>32.9%</b>	<b>9.8%</b>
<b>Agricultural goods output</b>	<b>43 950</b>	<b>42 847</b>	<b>41 961</b>	<b>100.0%</b>	<b>12.5%</b>

(e) 2020 data are estimates and may still change.

Updated: June 2021

Source: Eurostat(Online Data Table: aact\_eaa04), Economic Accounts for Agriculture (Production value at basic price).

## 4.2. AGRICULTURE: ECONOMIC ACCOUNTS

## Agricultural input

Input components (real prices)	2018	2019	2020 (e)	2019/2018	2020 (e) /2019
	Million EUR			% Change	
Seeds and planting stock	1 278	1 332	1 382	4.2%	3.7%
Energy	2 965	3 005	2 753	1.4%	-8.4%
Fertilisers and soil improvers	1 311	1 333	1 290	1.7%	-3.2%
Plant protection products	874	910	917	4.2%	0.7%
Veterinary expenses	704	706	705	0.4%	-0.3%
Feedingstuffs	7 770	7 552	7 399	-2.8%	-2.0%
Maintenance of materials	778	789	789	1.4%	0.1%
Maintenance of buildings	319	318	318	-0.3%	-0.1%
Agricultural services	2 596	2 622	2 633	1.0%	0.4%
Other goods and services	3 631	3 750	3 816	3.3%	1.7%
<b>Total intermediate consumption</b>	<b>22 530</b>	<b>22 600</b>	<b>22 295</b>	<b>0.3%</b>	<b>-1.3%</b>
<b>Fixed capital consumption</b>	<b>9 213</b>	<b>9 166</b>	<b>9 034</b>	<b>-0.5%</b>	<b>-1.4%</b>

(e) 2020 data are estimates and may still change.

Source: Eurostat(Online Data Table: aact\_eaa04), Economic Accounts for Agriculture (Production value at basic price)

Updated: June 2021

## Agricultural income

By category of product (real prices)	2018	2019	2020 (e)	2019/2018	2020 (e) /2019
	Million EUR			% Change	
<b>Output of the agricultural "industry":</b>	<b>53 487</b>	<b>52 487</b>	<b>50 486</b>	<b>-1.9%</b>	<b>-3.8%</b>
Crop output	29 632	28 502	28 160	-3.8%	-1.2%
Animal output:	14 317	14 345	13 801	0.2%	-3.8%
<i>Animals</i>	8 657	8 519	7 962	-1.6%	-6.5%
<i>Animal products</i>	5 660	5 826	5 839	2.9%	0.2%
Agricultural services	4 574	4 649	4 475	1.7%	-3.8%
Secondary activities	4 964	4 991	4 050	0.5%	-18.8%
<b>- Intermediate consumption</b>	<b>22 530</b>	<b>22 600</b>	<b>22 295</b>	<b>0.3%</b>	<b>-1.3%</b>
<b>= Gross value added at basic prices</b>	<b>30 957</b>	<b>29 886</b>	<b>28 191</b>	<b>-3.5%</b>	<b>-5.7%</b>
- Consumption of fixed capital	9 213	9 166	9 034	-0.5%	-1.4%
- Taxes	556	550	548	-1.1%	-0.2%
+ Subsidies	4 492	4 479	4 437	-0.3%	-0.9%
<b>= Factor income</b>	<b>25 680</b>	<b>24 649</b>	<b>23 045</b>	<b>-4.0%</b>	<b>-6.5%</b>
<b>Agricultural income* (2010=100)</b>	<b>146.7</b>	<b>141.0</b>	<b>134.1</b>	<b>-3.9%</b>	<b>-4.9%</b>

(e) 2020 data are estimates and may still change.

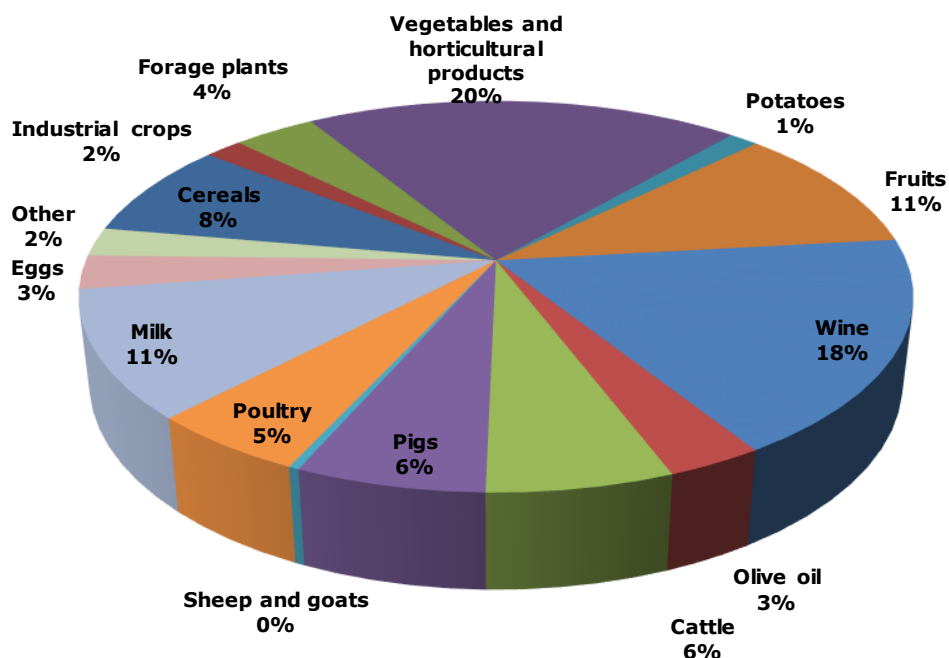
Updated: June 2021

Source: Eurostat(Online Data Table: aact\_eaa04 aact\_eaa06), Economic Accounts for Agriculture (Production value at basic price, Real Values, Index, 2010=100)

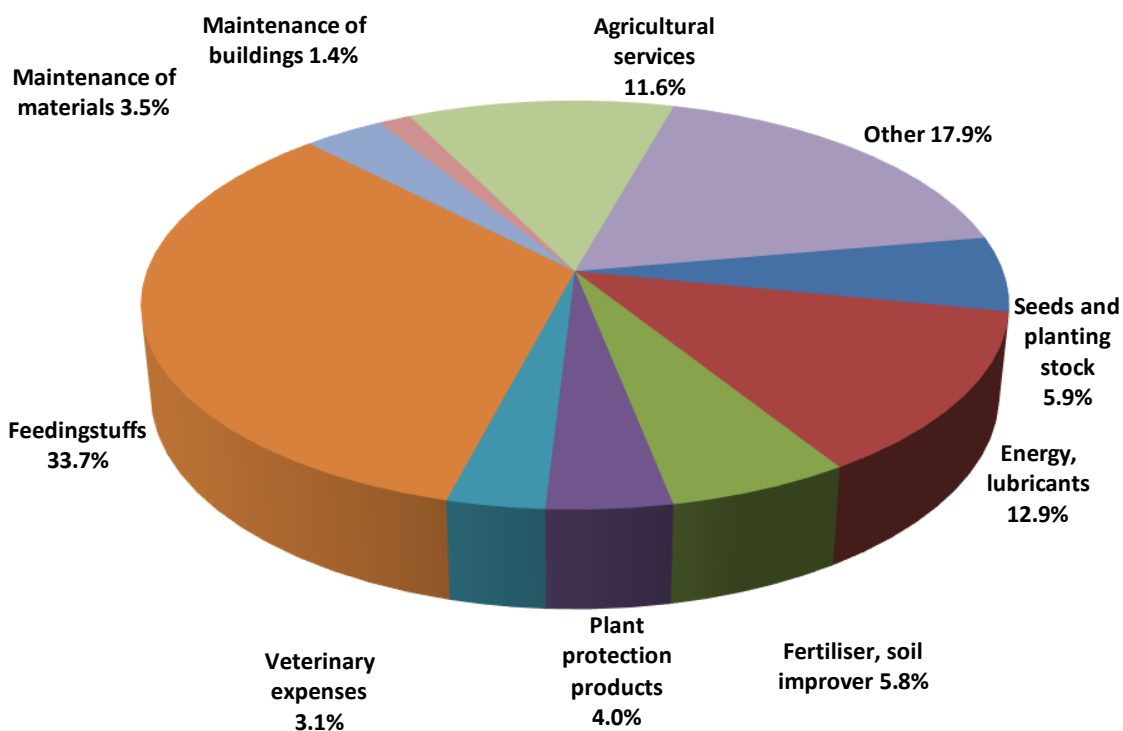


## 4.3. AGRICULTURE: ECONOMIC ACCOUNTS

### Output components (2018-2020 average)



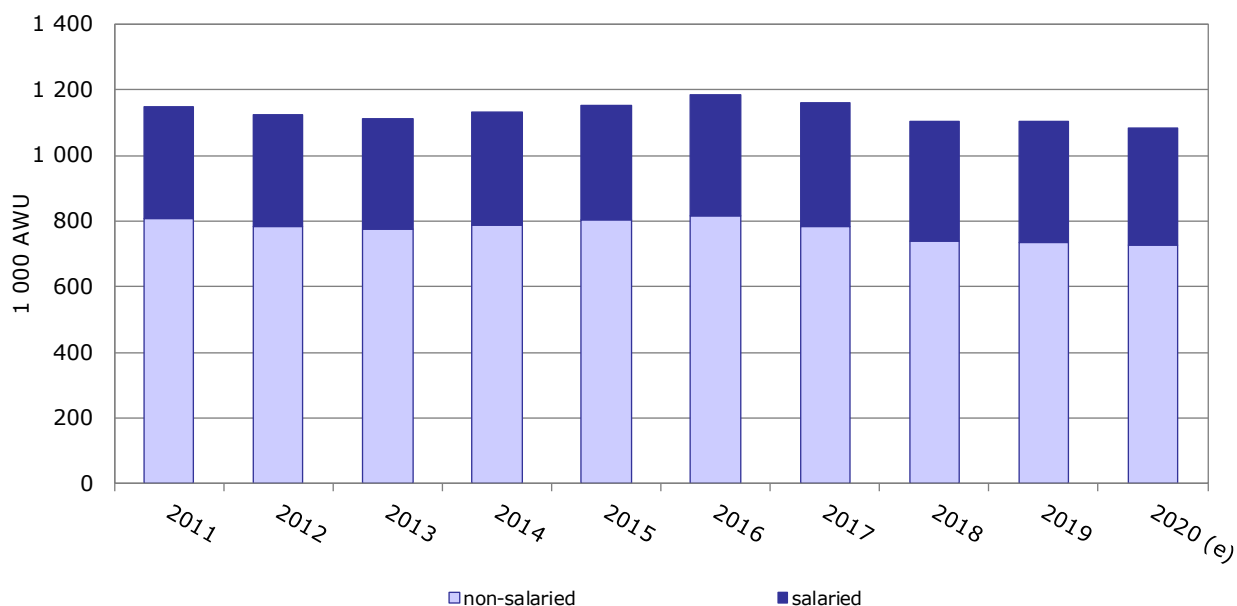
### Intermediate consumption (2018-2020 average)



Source: Eurostat (Online Data Table: aact\_eaa04) , Economic Accounts for Agriculture (values at real basic price)

## 4.4. AGRICULTURE: ECONOMIC ACCOUNTS

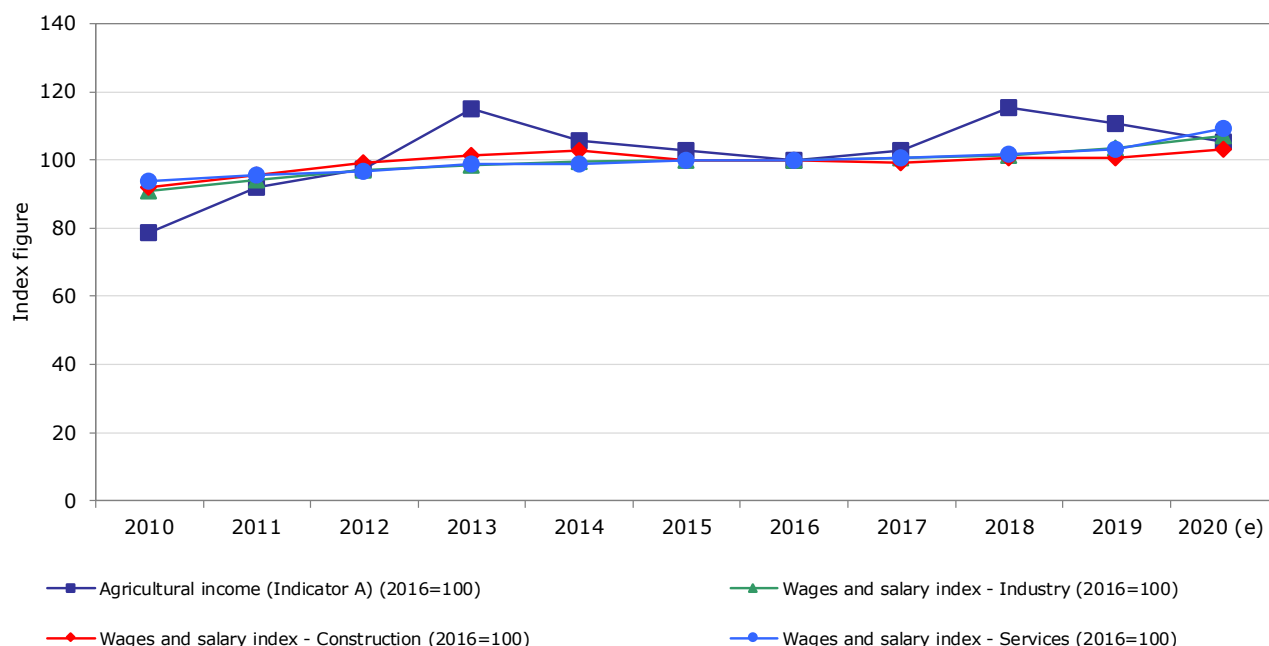
### Evolution of agricultural labour input



Source: Eurostat(Online Data Table: aact\_ali01)

Updated: June 2021

### Evolution of agricultural income (\*) compared to wages



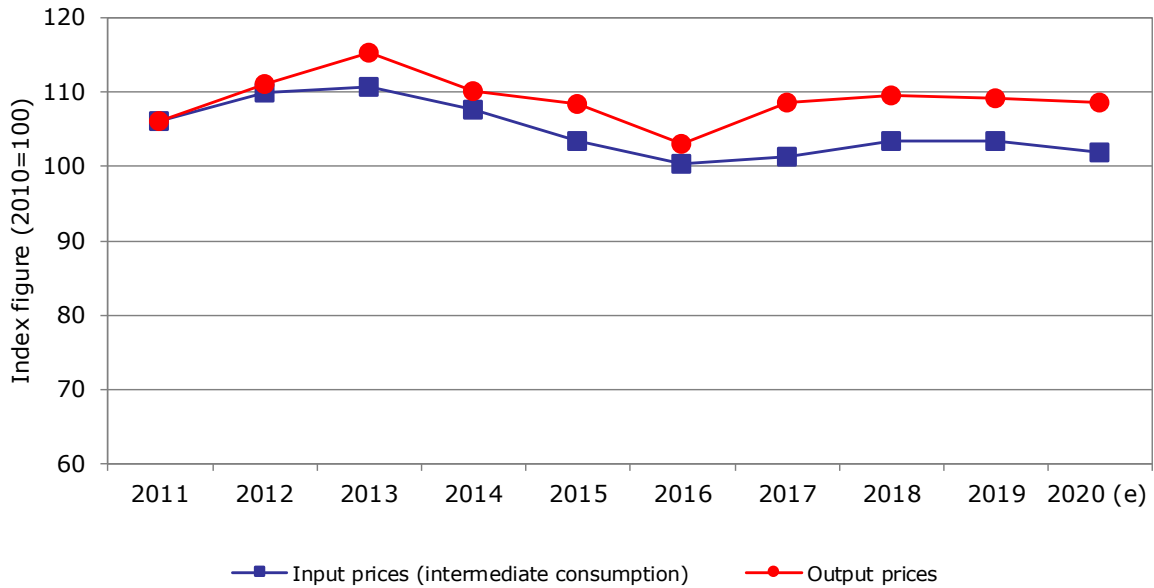
Source: Eurostat(Online Data Table: aact\_eaa06, lc\_lci\_r2\_a)

Updated: June 2021

(\*) The so-called indicator A is the real net value added at factor cost of agriculture per annual work unit (AWU). The net value added at factor cost (factor income) is calculated by subtracting the consumption of fixed capital from gross value added at basic prices and adding the value of subsidies less taxes. The AWU is defined as the work volume corresponding to one full-time employed worked.

## 4.5. AGRICULTURE: ECONOMIC ACCOUNTS

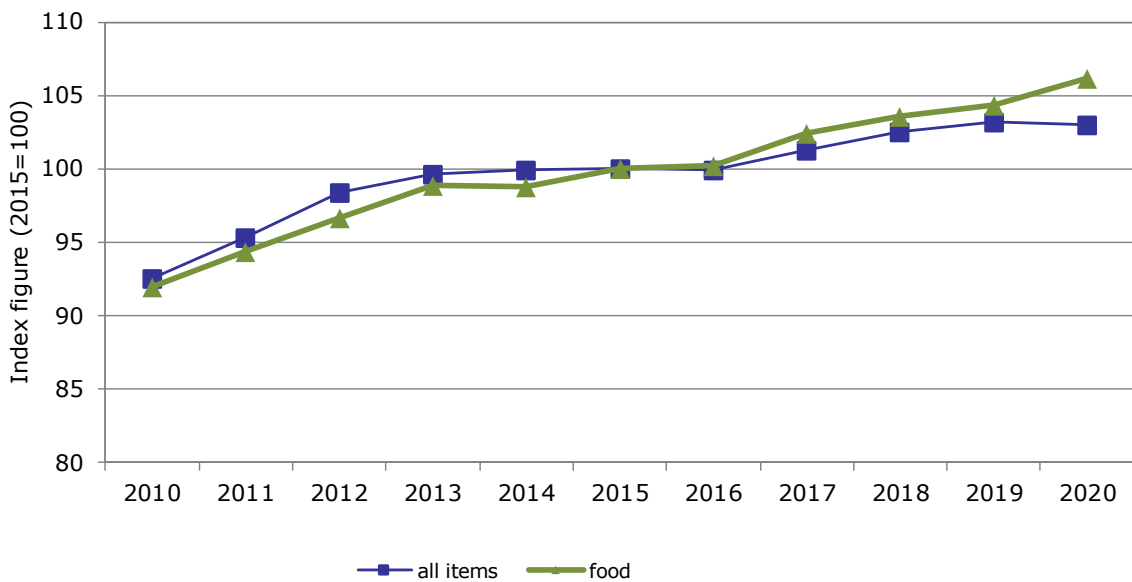
### Evolution of agricultural input and output prices



Source: Eurostat(Online data table: aact\_eaa05)

Updated: June 2021

### Evolution of harmonised indices of consumer prices

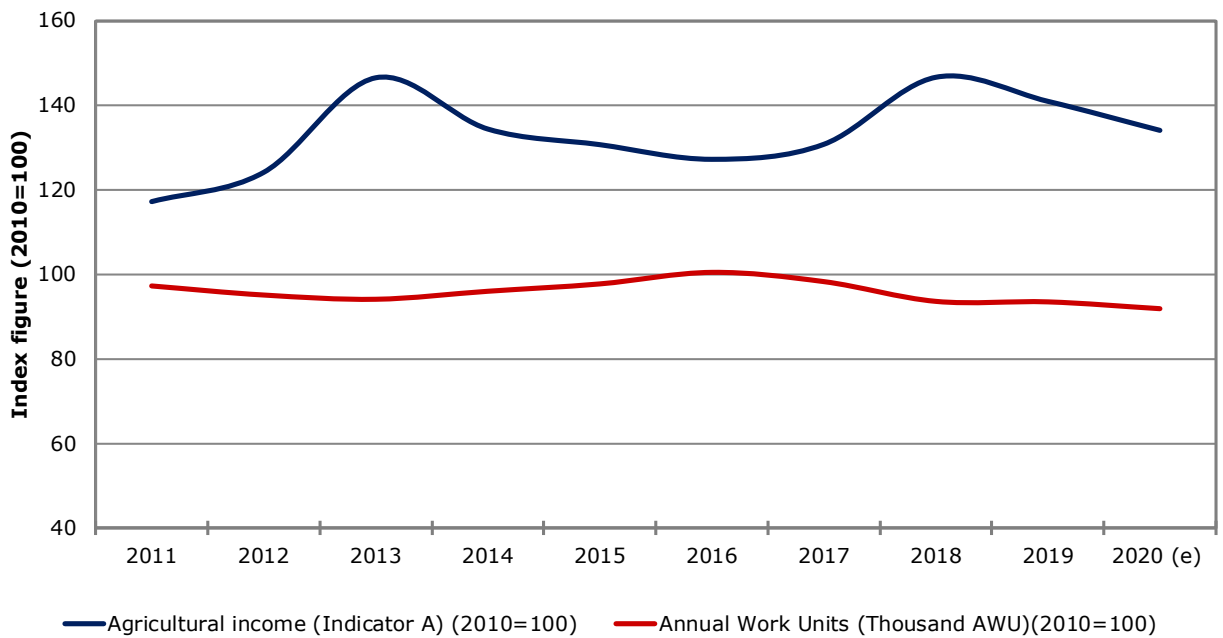


Source: Eurostat(Online Data Table: prc\_hicp\_aind)

Updated: June 2021

## 4.6. AGRICULTURE: ECONOMIC ACCOUNTS

### Farms' income and labour development index (real terms)

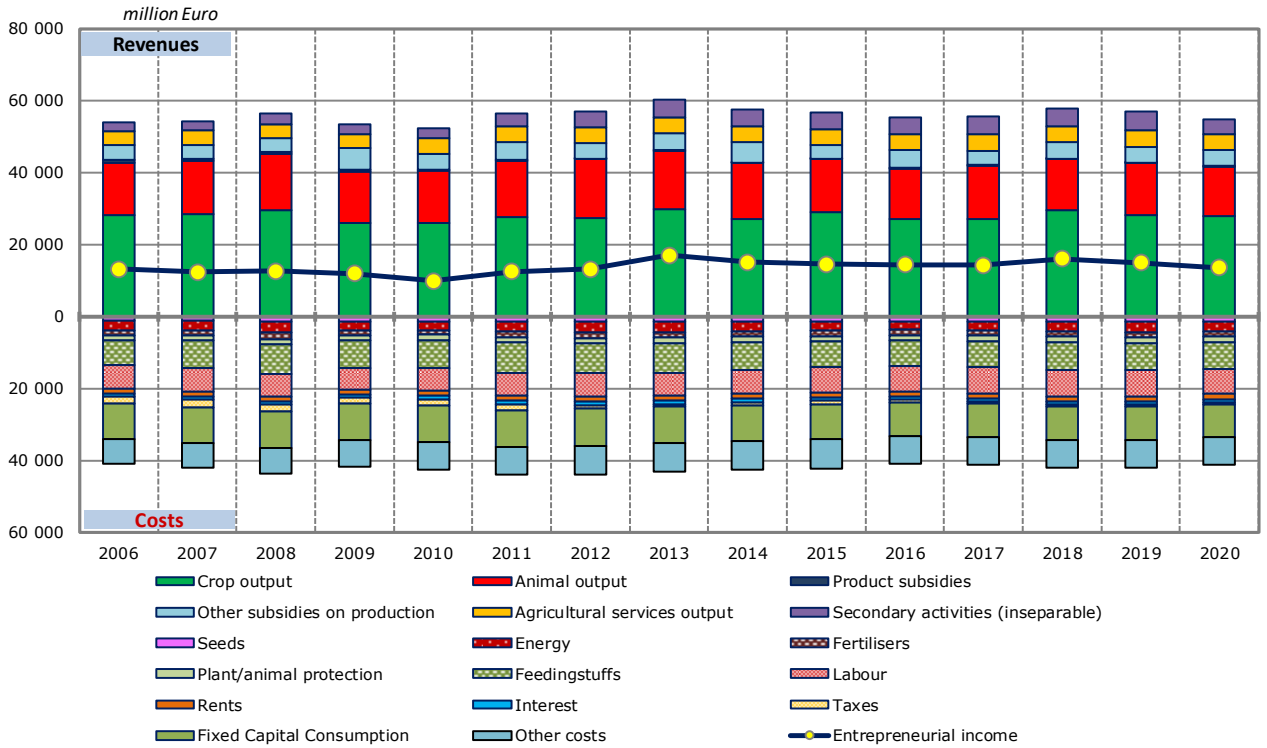


Source: Eurostat(Online Data Table: aact\_eaa06, aact\_ali01) and DG Agriculture and Rural Development

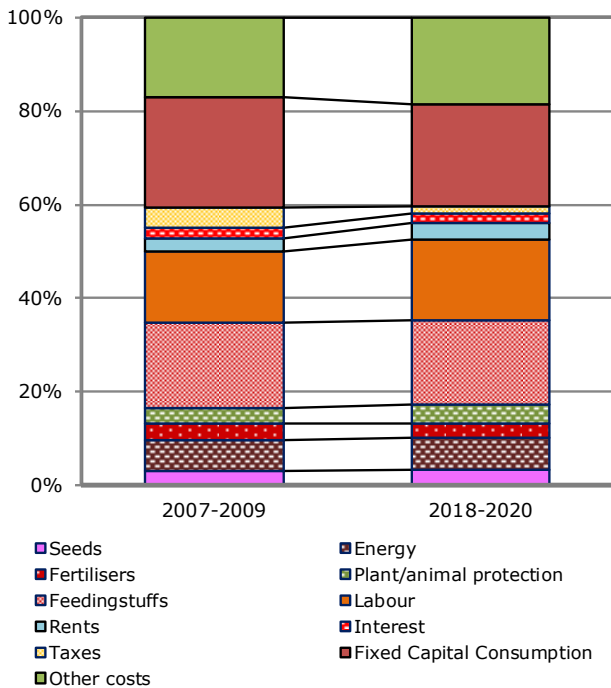
Updated: June 2021

## 4.7. AGRICULTURE: ECONOMIC ACCOUNTS

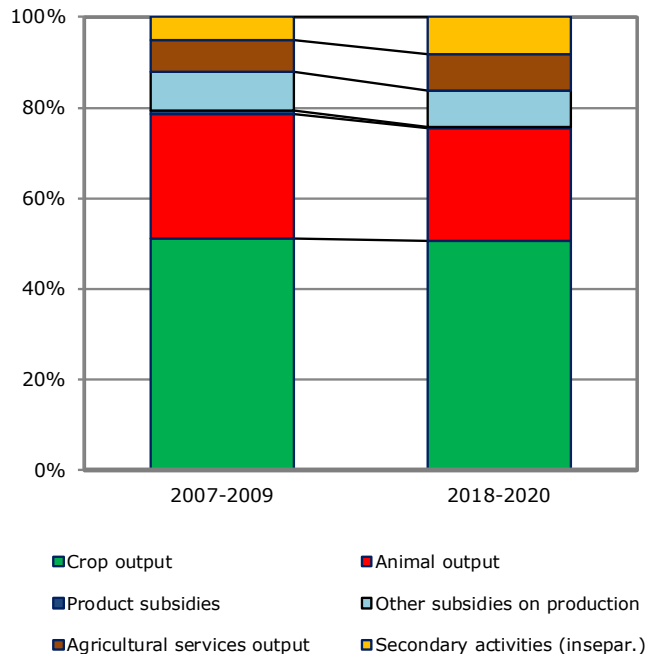
### Agricultural income (real prices)



#### Cost Structure



#### Revenue Structure



## 5.1. AGRICULTURAL TRADE

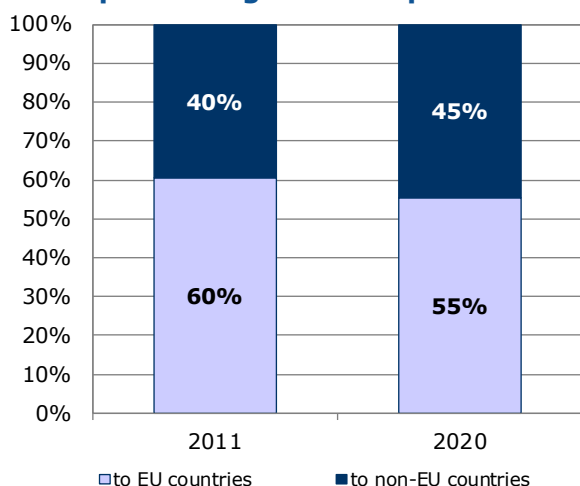
### Agricultural trade in 2020

By category of product	Total trade	Trade with EU countries		Trade with non-EU countries	
	Million EUR	Million EUR	% change 2020/2019	Million EUR	% change 2020/2019
<b>Exports</b>					
Commodities	3 064	1 965	1.8%	1 100	7.5%
Other primary products	6 835	5 125	1.4%	1 709	3.0%
Processed products	18 502	9 382	1.1%	9 120	0.0%
Food preparations	11 469	6 178	1.1%	5 291	11.1%
Beverages	2 474	1 158	-12.2%	1 315	-1.5%
Non edible	3 814	1 717	11.6%	2 071	6.4%
<b>Total agricultural products</b>	<b>46 158</b>	<b>25 525</b>	<b>0.4%</b>	<b>20 605</b>	<b>-9.8%</b>
as % of total exports	10.6%	11.5%		9.7%	
<b>Imports</b>					
Commodities	11 082	5 012	-1.2%	6 070	5.1%
Other primary products	12 223	9 205	-5.6%	3 018	2.6%
Processed products	5 146	4 589	-9.4%	557	3.8%
Food preparations	4 195	3 685	-2.1%	510	0.0%
Beverages	1 262	853	-16.9%	410	-13.7%
Non edible	4 767	3 775	-2.8%	992	-22.1%
<b>Total agricultural products</b>	<b>38 676</b>	<b>27 119</b>	<b>-5.1%</b>	<b>11 556</b>	<b>0.37%</b>
as % of total imports	10.5%	12.6%		7.5%	
<b>Balance</b>					
Commodities	-8 018	-3 047		-4 971	
Other primary products	-5 388	-4 079		-1 309	
Processed products	13 356	4 792		8 563	
Food preparations	7 273	2 493		4 781	
Beverages	1 211	306		905	
Non edible	- 952	-2 058		1 079	
<b>Total agricultural products</b>	<b>7 482</b>	<b>-1 594</b>		<b>9 049</b>	

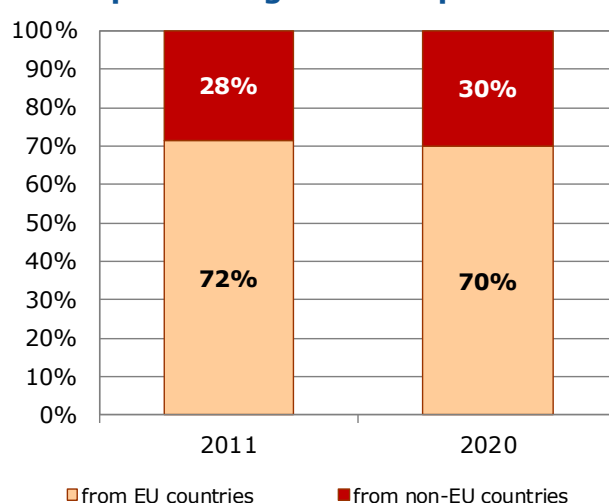
Source: Directorate General for Agriculture and Rural Development, based on COMEXT data

Updated: June 2021

#### Exports of agricultural products

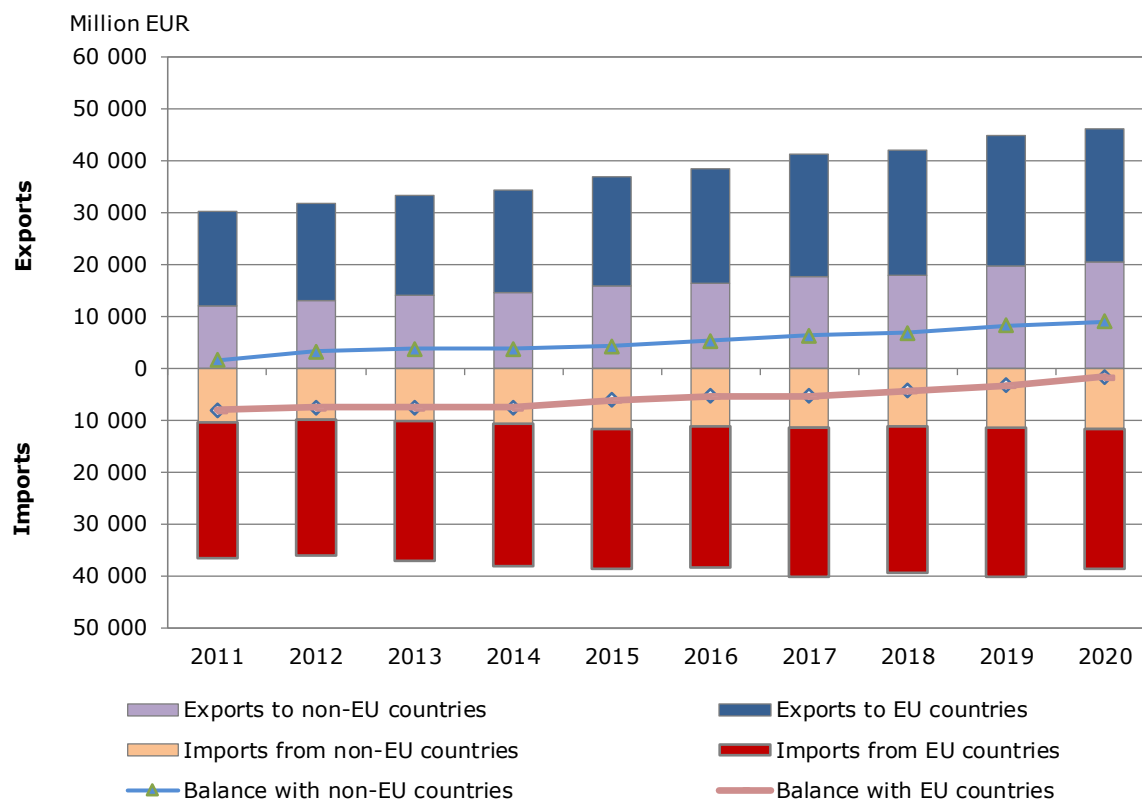


#### Imports of agricultural products

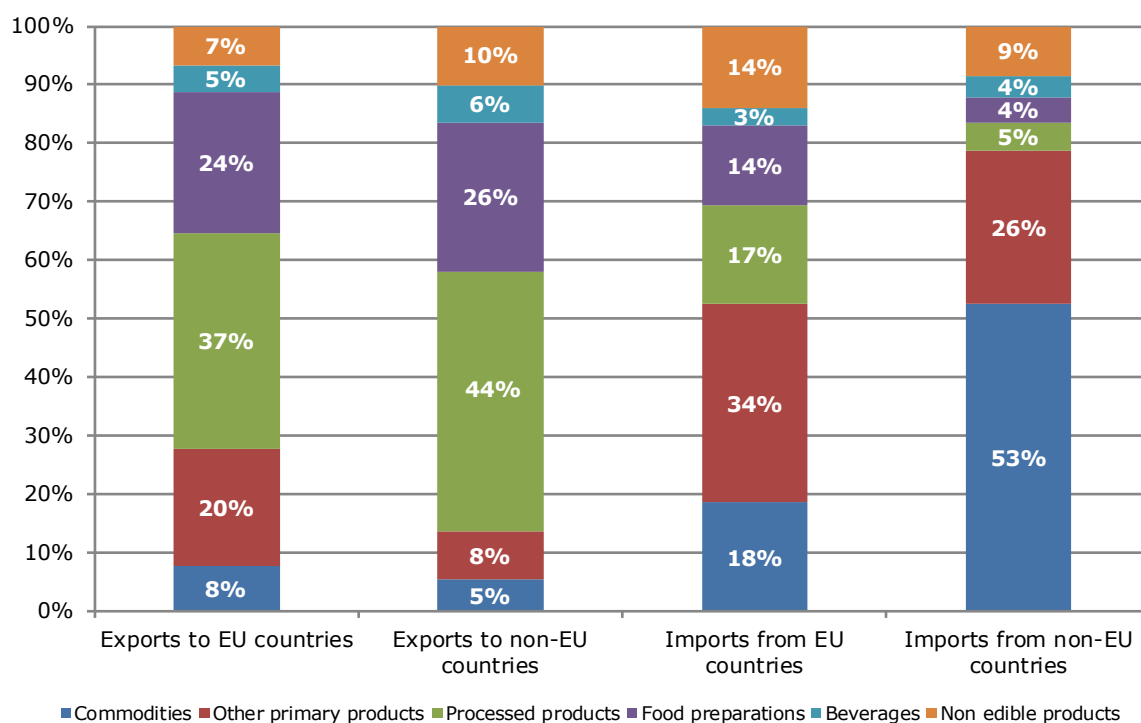


## 5.2. AGRICULTURAL TRADE

### Evolution of agricultural trade with EU and non-EU countries



### Structure of agricultural exports and imports



## 6.1. FARM STRUCTURE

### Structure of agricultural holdings

Holdings		2010		2016	
		Total	%	Total	%
By UAA (*)	< 5 ha	1 182 320	72.9%	709 560	61.9%
	5-10 ha	186 150	11.5%	179 960	15.7%
	10-20 ha	120 120	7.4%	119 540	10.4%
	20-30 ha	46 690	2.9%	47 180	4.1%
	30-50 ha	40 920	2.5%	42 670	3.7%
	50-100 ha	29 210	1.8%	29 960	2.6%
	> 100 ha	15 490	1.0%	16 840	1.5%
By economic size (**)	< 4 000 €	782 160	48.3%	390 870	34.1%
	< 8 000 €	236 340	14.6%	188 500	16.5%
	< 15 000 €	177 020	10.9%	152 830	13.3%
	< 25 000 €	119 510	7.4%	108 430	9.5%
	< 50 000 €	128 590	7.9%	117 560	10.3%
	< 100 000 €	88 660	5.5%	89 890	7.8%
	< 250 000 €	59 440	3.7%	65 800	5.7%
	< 500 000 €	17 410	1.1%	18 790	1.6%
=/> 500 000 €	11 770	0.7%	13 040	1.1%	
By LSU (***)	0	1 414 310	87.3%	994 560	86.8%
	0-5	83 410	5.1%	35 720	3.1%
	5-10	27 160	1.7%	21 090	1.8%
	10-15	16 960	1.0%	14 410	1.3%
	15-20	12 180	0.8%	11 350	1.0%
	20-50	34 750	2.1%	34 940	3.0%
	50-100	15 440	1.0%	16 160	1.4%
	100-500	13 770	0.8%	14 540	1.3%
	> 500	2 900	0.2%	2 930	0.3%
By age of holder	< 35 years	82 110	5.1%	46 510	4.1%
	35-44 years	203 480	12.6%	113 680	9.9%
	45-54 years	338 050	20.9%	241 280	21.1%
	55-64 years	393 860	24.3%	275 390	24.0%
	> 64 years	603 390	37.2%	468 850	40.9%
	not applicable	:	:	:	:
<b>Total</b>	<b>1 620 890</b>	<b>100%</b>	<b>1 145 710</b>	<b>100%</b>	
UAA in 1 000 ha	12 856		12 598		
UAA (ha) per holding	7.9		11		

Source: Eurostat (Online Data Table: ef\_m\_farmleg), Farm Structure Survey

Updated: June 2021

Approximately 1/3 of the reported farms number change between years 2010 and 2016 is due to the change of statistical survey threshold or coverage in Italy.

(\*) UAA = Utilised agricultural area.

(\*\*) Economic size: The standard output of an agricultural product (crop or livestock), abbreviated as SO, is the average monetary value of the agricultural output at farm-gate price, in euro per hectare or per head of livestock.

There is a regional SO coefficient for each product, as an average value over a reference period (5 years, except for the SO 2004 coefficient calculated using the average of 3 years). The sum of all the SO per hectare of crop and per head of livestock in a farm is a measure of its overall [economic size](#), expressed in euro.

(\*\*\*) LSU = Livestock units. A LSU is equivalent to a dairy cow. The number of animals (heads) is converted into LSU using a set of coefficients reflecting the feed requirements of the different animal categories.



## 6.2. FARM STRUCTURE

### Structure of farm labour force

2016			
Family labour force		Non family labour force	
persons:	1813 680	Data not available	
of which women:	34.6%		
AWUs (*):	622 650	AWUs:	111 180
Holders	Family members	Regular non family labour force	Non regular non family labour force
persons:	persons:	persons:	Data not available
1129 370	684 310	231 730	
of which women:	of which women:	of which women:	
33.7%	36.1%	27.3%	
AWUs:	AWUs:	AWUs:	AWUs:
415 090	207 560	111 180	163 260
<b>Total farm labour force (persons)</b>		2045 410	
<b>Total farm labour force (AWUs)</b>		897 090	

Source: Eurostat(Online Data Table: ef\_lf\_main), Farm Structure Survey

Updated: June 2021

\* AWUs = Annual work units. An AWU is equivalent to a worker employed on a full time basis for one year.

## 6.3. FARM STRUCTURE

## Structure of farm livestock

## Livestock and holdings with livestock in 2016

	Livestock unit (LSU)	Head (animal)	Thousand heads (animals)	Holding*	Percent structure	
					Livestock unit (LSU)	Holding*
<b>Livestock</b>	<b>9 467 720</b>	<b>:</b>	<b>:</b>	<b>154 680</b>	<b>100%</b>	<b>100%</b>
Live horses, asses, mules and hinnies	131 820	164 770	:	24 390	1%	16%
Live bovine animals	4 554 050	6 114 510	:	97 560	48%	63%
Live swine	2 036 140	8 375 520	:	24 950	22%	16%
Live sheep	702 650	7 026 540	:	50 650	7%	33%
Live goats	98 200	982 000	:	21 710	1%	14%
Live poultry	1 930 920	:	158 030	15 430	20%	10%
Rabbits, breeding females	13 930	696 560	:	4 220	0%	3%
Bees (hives)	:	484 300	:	4 750	:	3%
Other animals	:	:	:	7 420	:	5%

\*note that holdings can keep various animals at the same time so the number of holdings with "Livestock" is less than the sum of groups of holdings with particular animals

## Number of holdings with livestock herds by size class of livestock units, in 2016

ANIMALS/holdings*	Less than 5 LSU	From 5 to 9.9 LSU	From 10 to 14.9 LSU	From 15 to 19.9 LSU	From 20 to 49.9 LSU	From 50 to 99.9 LSU	From 100 to 499.9 LSU	500 LSU or over
<b>Livestock</b>	<b>35 720</b>	<b>21 090</b>	<b>14 410</b>	<b>11 350</b>	<b>34 940</b>	<b>16 160</b>	<b>14 540</b>	<b>2 930</b>
Live horses, asses, mules and hinnies	8 310	3 400	2 270	1 490	5 060	2 500	1 290	60
Live bovine animals	15 240	13 830	10 400	8 190	24 510	13 160	11 280	950
Live swine	4 420	3 480	2 100	1 750	6 550	3 160	2 290	1 180
Live sheep	12 170	7 170	5 140	4 750	14 810	5 230	1 340	50
Live goats	5 330	3 790	2 690	1 720	5 040	2 290	840	20
Live poultry	4 670	2 090	1 150	600	2 360	1 280	2 150	1 120
Rabbits, breeding females	1 740	570	300	510	790	150	140	:

\*note that holdings can keep various animals at the same time so the number of holdings with "Livestock" is less than the sum of groups of holdings with particular animals

## Number of livestock units in livestock herds by size classes of livestock units, in 2016

ANIMALS/LSU	Less than 5 LSU	From 5 to 9.9 LSU	From 10 to 14.9 LSU	From 15 to 19.9 LSU	From 20 to 49.9 LSU	From 50 to 99.9 LSU	From 100 to 499.9 LSU	500 LSU or over
<b>Livestock</b>	<b>90 820</b>	<b>149 970</b>	<b>174 590</b>	<b>195 560</b>	<b>1 116 020</b>	<b>1 117 820</b>	<b>2 958 510</b>	<b>3 664 430</b>
Live horses, asses, mules and hinnies	15 840	13 180	10 530	7 560	35 040	22 860	26 290	530
Live bovine animals	41 220	84 530	107 920	122 630	683 950	791 690	2 046 330	675 780
Live swine	5 110	7 890	6 240	4 340	38 960	52 550	325 490	1 595 570
Live sheep	19 140	31 340	35 800	53 090	304 900	179 250	77 910	1 210
Live goats	5 730	9 310	10 190	6 520	36 360	21 730	8 220	140
Live poultry	3 270	2 690	2 820	440	13 600	45 050	471 890	1 391 160
Rabbits, breeding females	510	1 020	1 090	:	3 220	4 690	:	:

Source: Eurostat online data tables ef\_m\_farmleg, ef\_lsk\_main.

Updated: September 2021

The data extracted in June and September 2021, for the most recent data see sources

This document does not necessarily represent the official views of the European Commission  
© European Union, 2020 - Reproduction authorised provided the source is acknowledged

Contact: DG Agriculture and Rural Development, Farm Economics Unit

Tel: +32-2-29 75471 / E-mail: [Agri-C3@ec.europa.eu](mailto:Agri-C3@ec.europa.eu)