

BEEF & VEAL MARKET SITUATION



Civil Dialogue Group
24 April 2018

LIVESTOCK

DECEMBER SURVEY

EU EVOLUTION TOTAL BOVINE

Dec 1000 Hd	TOTAL LIVESTOCK				%Var 2017 2016	BOVINE < 1 Year				%Var 2017 2016	BOVINE 1-2 Year				%Var 2017 2016	BOVINE > 2 Year				%Var 2017 2016
	2014	2015	2016	2017		2014	2015	2016	2017		2014	2015	2016	2017		2014	2015	2016	2017	
BE	2 477	2 503	2 501	2 386	-4.6%	745	749	748	700	-6.5%	490	493	492	484	-1.6%	1 243	1 261	1 261	1 202	-4.7%
BG	562	561	570	552	-3.1%	121	109	120	110	-8.4%	65	64	63	57	-10.2%	376	388	387	386	-0.4%
CZ	1 373	1 366	1 340	1 366	+2.0%	413	403	397	407	+2.4%	311	309	295	299	+1.4%	649	654	648	660	+2.0%
DK	1 553	1 566	1 554	1 558	+0.3%	534	538	540	541	+0.2%	307	302	298	294	-1.3%	713	726	715	723	+1.1%
DE	12 742	12 635	12 467	12 281	-1.5%	3 909	3 836	3 795	3 704	-2.4%	3 011	2 993	2 960	2 904	-1.9%	5 823	5 806	5 712	5 673	-0.7%
EE	265	256	248	251	+1.2%	73	70	68	70	+2.5%	54	53	50	49	-2.0%	138	133	130	133	+1.8%
IE	6 243	6 422	6 613	6 674	+0.9%	1 886	2 026	2 077	2 087	+0.5%	1 649	1 660	1 778	1 792	+0.8%	2 709	2 737	2 759	2 795	+1.3%
EL	659	582	554	555	+0.2%	176	154	145	140	-3.4%	119	103	102	107	+4.9%	365	325	306	308	+0.7%
ES	6 079	6 183	6 318	6 467	+2.4%	2 302	2 325	2 404	2 492	+3.7%	746	786	804	822	+2.3%	3 031	3 072	3 110	3 153	+1.4%
FR	19 271	19 406	19 004	18 580	-2.2%	5 546	5 618	5 138	4 844	-5.7%	3 418	3 461	3 493	3 400	-2.7%	10 307	10 327	10 372	10 336	-0.3%
HR	441	455	462	470	+1.7%	132	148	154	156	+1.3%	88	88	89	99	+11.2%	221	219	219	215	-1.8%
IT			6 315	6 350	+0.6%	1 654	1 678	1 745	1 738	-0.4%	1 366	1 379	1 448	1 501	+3.6%	3 106	3 099	3 122	3 111	-0.3%
CY	60	59	63	67	+6.0%	22	21	22	23	+7.0%	10	9	10	11	+9.5%	28	29	32	33	+4.3%
LV	422	419	412	406	-1.6%	118	114	113	108	-4.2%	75	76	73	70	-3.9%	229	229	227	228	+0.5%
LT	737	723	695	676	-2.7%	192	185	179	180	+0.5%	149	152	143	135	-5.5%	395	385	373	362	-3.1%
LU	201	201	202	198	-2.1%	54	54	54	50	-7.1%	47	45	44	44	-0.3%	100	102	104	103	-0.3%
HU	802	821	852	870	+2.1%	219	220	239	243	+1.7%	176	180	176	179	+1.7%	407	421	438	448	+2.3%
MT	15	15	14	14	-1.3%	4	4	4	4	+7.7%	3	4	3	3	-3.4%	7	7	7	7	-4.9%
NL	4 169	4 315	4 294	4 030	-6.1%	1 676	1 707	1 666	1 594	-4.3%	657	660	644	575	-10.7%	1 836	1 948	1 985	1 860	-6.3%
AT	1 961	1 958	1 954	1 943	-0.6%	629	624	632	624	-1.4%	432	439	432	439	+1.5%	899	894	890	881	-1.0%
PL	5 660	5 763	5 970	6 036	+1.1%	1 450	1 617	1 718	1 713	-0.3%	1 445	1 532	1 637	1 669	+1.9%	2 765	2 614	2 615	2 654	+1.5%
PT	1 549	1 606	1 635	1 670	+2.1%	487	510	499	515	+3.1%	214	240	267	256	-4.1%	848	856	869	900	+3.5%
RO	2 069	2 092	2 050	1 989	-2.9%	463	475	447	431	-3.6%	254	261	251	244	-2.8%	1 352	1 357	1 352	1 315	-2.8%
SI	468	484	489	480	-1.9%	148	153	155	153	-1.2%	122	129	131	128	-1.8%	198	202	203	198	-2.4%
SK	466	457	446	440	-1.4%	130	130	130	125	-4.4%	93	91	84	84	+0.0%	243	236	231	231	-0.2%
FI	907	903	887	875	-1.4%	307	308	302	299	-1.1%	223	221	218	213	-2.5%	378	374	367	363	-1.1%
SE	1 436	1 428	1 436	1 449	+0.9%	473	467	468	474	+1.3%	334	342	344	342	-0.6%	629	619	624	633	+1.4%
UK	9 693	9 816	9 806	9 791	-0.2%	2 842	2 967	2 952	2 944	-0.3%	2 332	2 372	2 435	2 435	idem	4 520	4 477	4 419	4 412	-0.2%
EU	82 280	82 996	89 152	88 424	-0.8%	26 705	27 209	26 911	26 468	-1.6%	18 189	18 445	18 764	18 635	-0.7%	43 514	43 498	43 476	43 320	-0.4%

Source : EStat Newcronos

EU %Var is calculated considering only countries available in 2016 AND 2017

19 April 2018

LIVESTOCK

DECEMBER SURVEY

EU EVOLUTION

COWS

Dec	TOTAL COWS				%Var 2017 2016	DAIRY COWS				%Var 2017 2016	OTHER COWS				%Var 2017 2016
1000 Hd	2014	2015	2016	2017		2014	2015	2016	2017		2014	2015	2016	2017	
BE	956	974	988	938	-5.1%	519	529	531	519	-2.2%	436	445	457	419	-8.4%
BG	351	359	365	357	-2.2%	302	283	279	260	-6.7%	49	76	86	97	+12.4%
CZ	566	566	561	571	+1.9%	372	369	367	365	-0.5%	194	197	193	206	+6.4%
DK	643	664	657	664	+1.1%	547	570	565	575	+1.8%	96	94	92	89	-3.3%
DE	4 969	4 966	4 887	4 859	-0.6%	4 296	4 285	4 218	4 199	-0.4%	674	681	670	660	-1.4%
EE	118	116	114	116	+1.8%	96	91	86	86	+0.3%	23	25	28	30	+6.1%
IE	2 169	2 293	2 337	2 362	+1.0%	1 128	1 240	1 295	1 343	+3.7%	1 041	1 053	1 042	1 018	-2.3%
EL	305	274	241	244	+1.2%	135	111	106	103	-2.8%	169	163	135	141	+4.4%
ES	2 669	2 763	2 785	2 823	+1.4%	845	844	834	824	-1.3%	1 824	1 919	1 950	1 999	+2.5%
FR	7 841	7 872	7 856	7 745	-1.4%	3 699	3 661	3 630	3 595	-1.0%	4 142	4 211	4 225	4 151	-1.8%
HR	180	171	167	161	-3.6%	159	152	147	139	-5.4%	21	19	20	22	+10.0%
IT			2 365	2 338	-1.1%			2 060	2 040	-1.0%			305	298	-2.2%
CY	25	26	29	30	+6.2%	25	26	28	30	+6.2%	0	0	0	0	-7.1%
LV	200	201	199	199	+0.1%	166	162	154	150	-2.4%	34	39	45	49	+8.8%
LT	351	343	333	323	-3.1%	314	301	286	273	-4.5%	37	43	47	50	+5.7%
LU	75	77	80	78	-1.7%	47	49	52	52	+0.3%	29	28	28	26	-5.4%
HU	359	368	383	395	+3.1%	255	250	244	244	idem	104	117	138	151	+9.4%
MT	7	7	7	6	-5.1%	7	6	7	6	-5.5%	0	0	0	0	+16.7%
NL	1 694	1 802	1 864	1 723	-7.6%	1 610	1 717	1 794	1 665	-7.2%	84	85	70	58	-17.1%
AT	768	758	757	750	-0.8%	538	534	540	543	+0.7%	230	224	217	207	-4.5%
PL	2 403	2 303	2 304	2 341	+1.6%	2 248	2 134	2 130	2 153	+1.1%	155	169	174	188	+8.2%
PT	697	719	724	728	+0.6%	234	243	239	239	-0.1%	463	476	485	490	+1.0%
RO	1 207	1 207	1 204	1 171	-2.8%	1 188	1 191	1 193	1 159	-2.8%	18	17	12	12	-1.7%
SI	168	170	171	169	-1.5%	108	113	108	109	+0.9%	60	57	64	60	-5.7%
SK	202	200	194	195	+0.3%	143	139	133	130	-2.1%	59	60	62	65	+5.3%
FI	340	339	333	329	-1.2%	283	282	275	271	-1.7%	57	57	57	58	+1.1%
SE	517	513	514	522	+1.7%	344	337	326	323	-0.8%	173	176	188	199	+6.0%
UK	3 419	3 469	3 451	3 444	-0.2%	1 883	1 918	1 898	1 902	+0.2%	1 536	1 551	1 554	1 542	-0.8%
EU	33 198	33 521	35 868	35 581	-0.8%	21 489	21 537	23 525	23 299	-1.0%	11 708	11 983	12 342	12 283	-0.5%

Source : EStat Newcronos

EU %Var is calculated considering only countries available in 2016 AND 2017

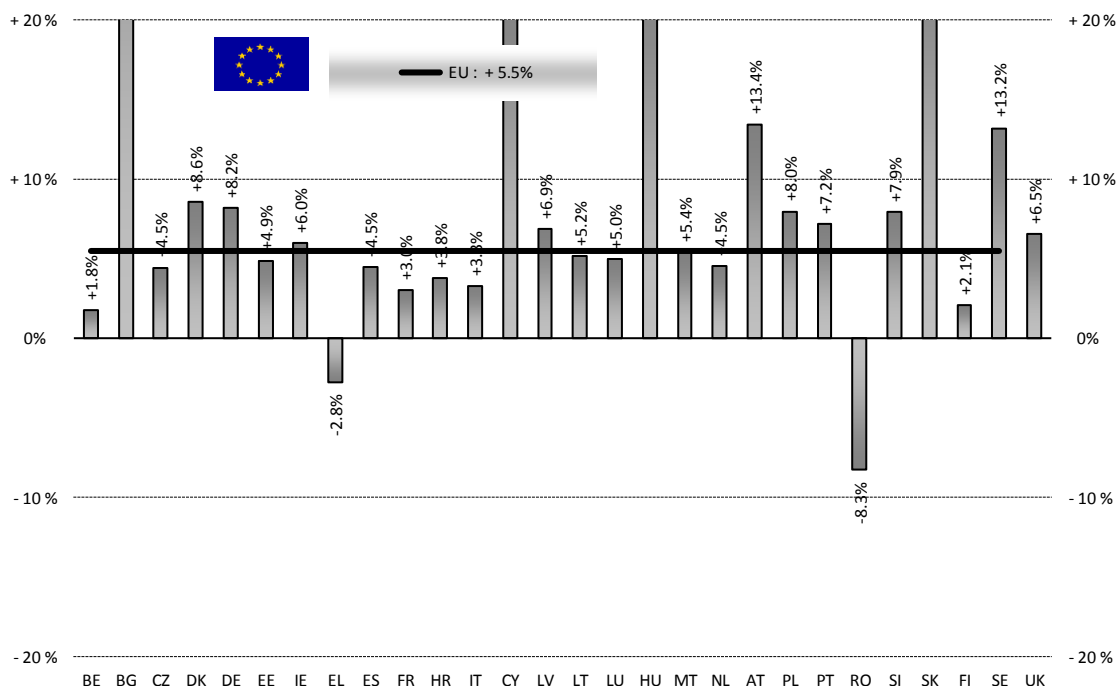
19 April 2018

PRODUCTION

% EVOLUTION HEADS

HEADS	Jan-Jan 17/18	
	EU15	EU28
Bull	+2.5%	+3.7%
Bullock	+6.7%	+6.6%
Cow	+8.4%	+8.2%
Heifer	+9.4%	+9.3%
Calve	-0.4%	-0.3%
Young cattle	+5.2%	+4.9%
Meat of bovine animals	+5.3%	+5.5%

Estimates for last month of period :



Source : EStat - Newcronos

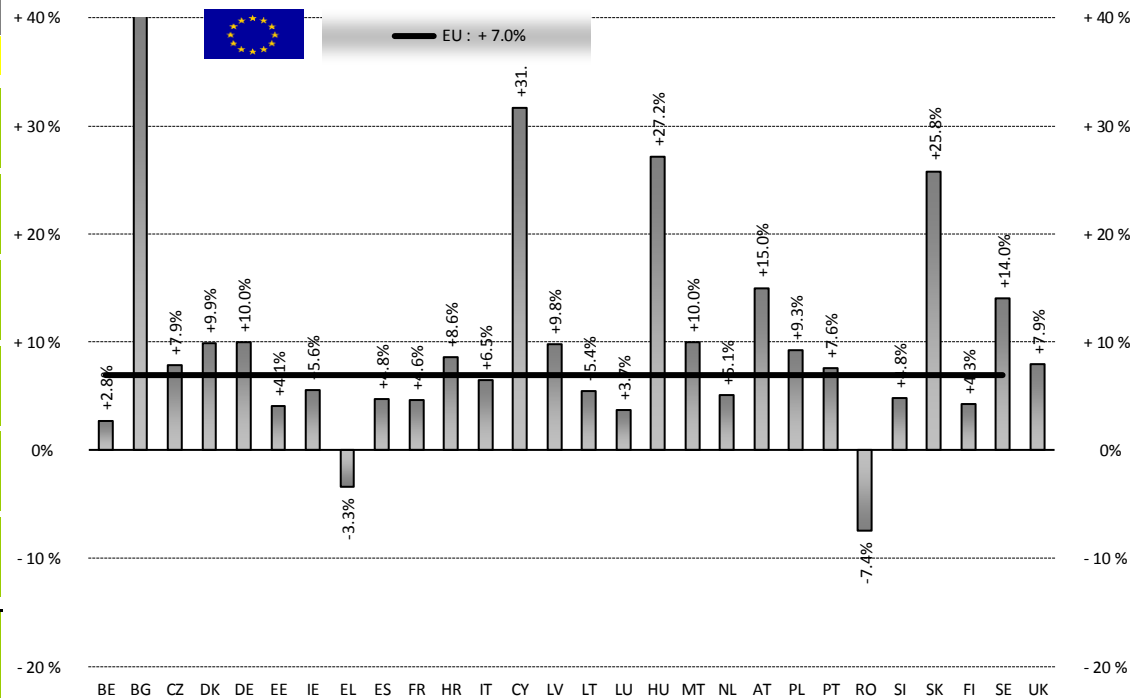
19 April 2018

PRODUCTION

% EVOLUTION TONNES

TONNES	Jan-Jan 17/18	
	EU15	EU28
Bull	+1.8%	+3.1%
Bullock	+6.7%	+6.6%
Cow	+10.4%	+10.3%
Heifer	+10.8%	+10.6%
Calve	+1.8%	+1.8%
Young cattle	+7.8%	+7.6%
Meat of bovine animals	+6.8%	+7.0%

Estimates for last month of period :

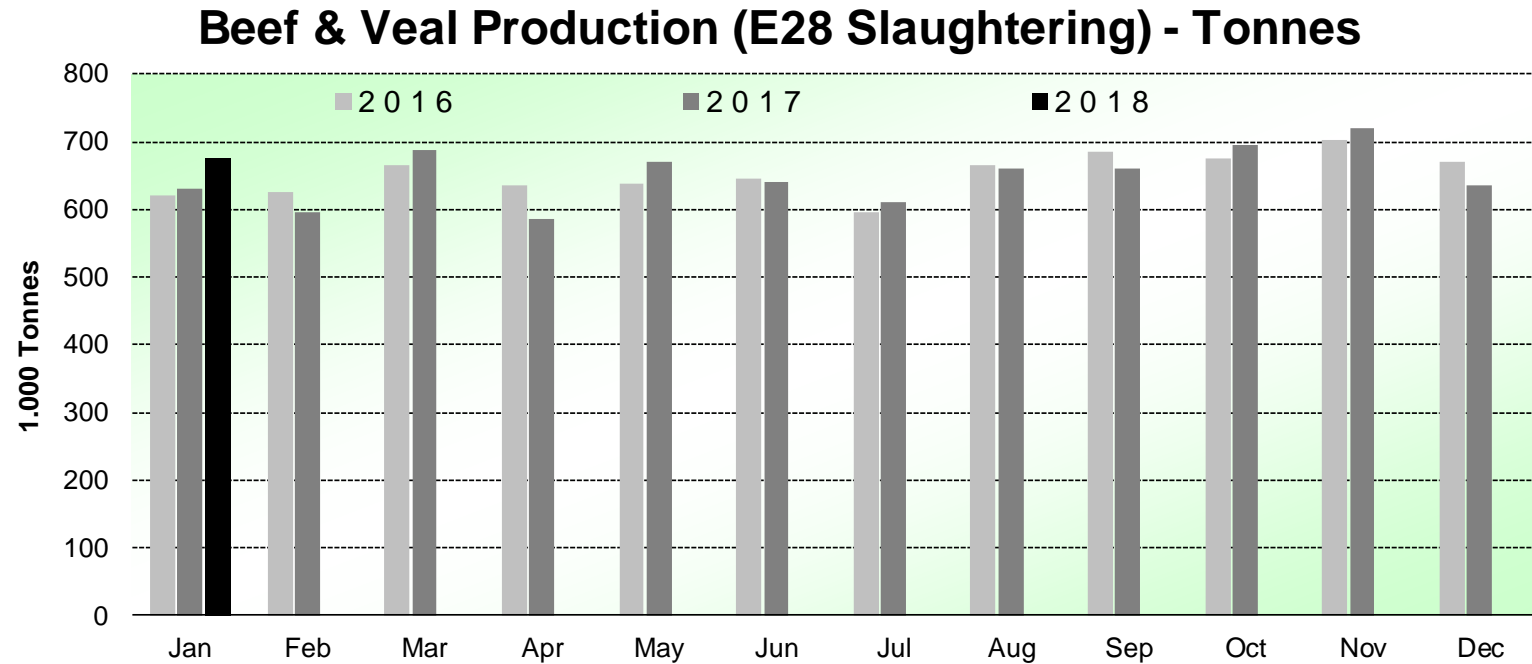


Source : EStat - Newcronos

19 April 2018

PRODUCTION

HISTORIC
TONNES



Source : EStat-Newcronos

19 April 2018

PRICES CARCASSES

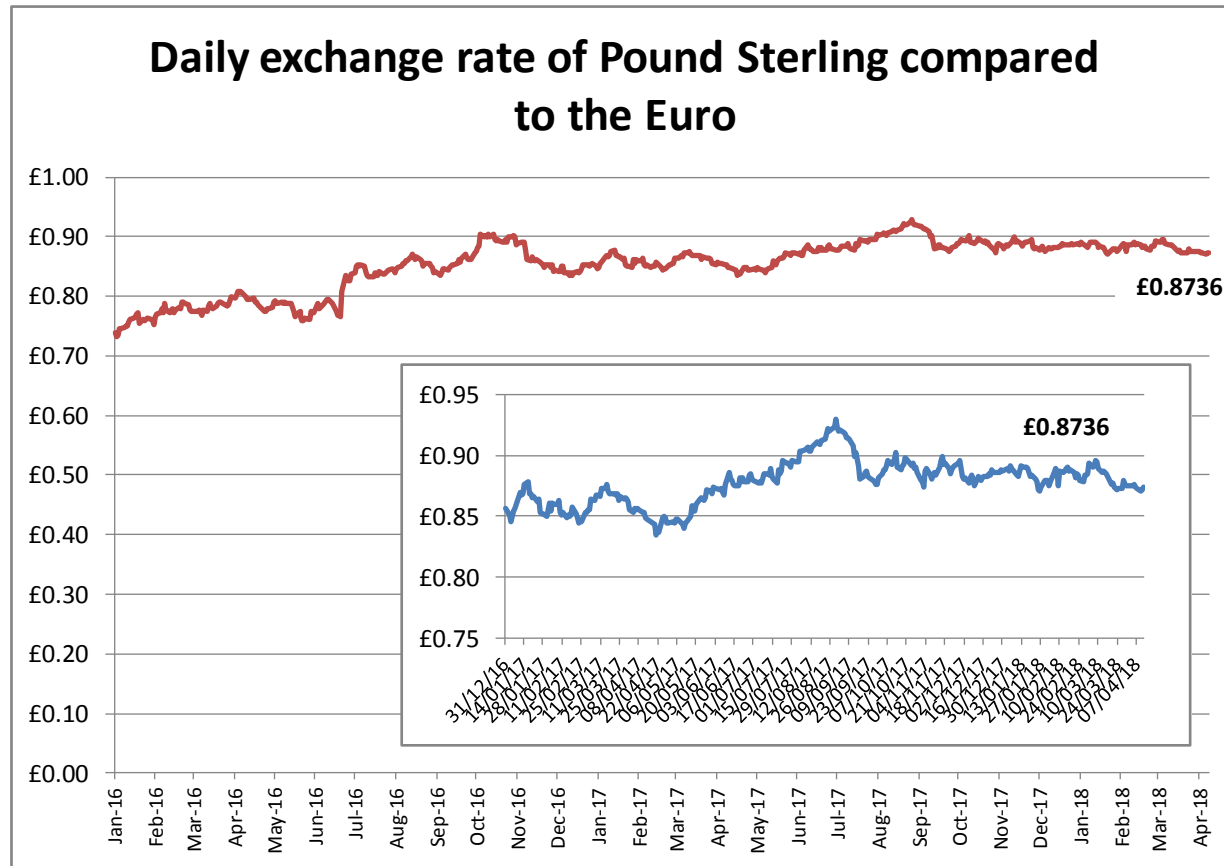
Dashboard

EU Prices week		15	Evolution since last week		Evolution since last month	Evolution since last year
Carcasse	Average A/C/Z -R3	384.0	€/100 kg	+ 0.2%	- 0.5%	+ 3.8%
	Young Bovines (Z)	395.5		+ 0.6%	- 1.0%	+ 0.6%
	Young Bulls (A)	383.3		- 0.3%	- 1.1%	+ 4.4%
	Steers (C)	408.4		+ 0.6%	+ 2.1%	+ 0.9%
	Cows (D)	303.2		- 0.3%	+ 0.6%	+ 5.1%
	Heifers (E)	391.7		- 0.2%	+ 0.4%	+ 2.4%
Live Animals	Male Calves Dairy Type	112.9	€/head	+ 4.5%	+ 16.7%	+ 7.3%
	Male Calves Beef Type	223.2		+ 2.3%	+ 4.8%	+ 2.3%
	Young Store Cattle	2.45	€/kg	+ 0.8%	- 1.3%	+ 1.6%
	Yearling Male Store Cattle	2.34		+ 0.3%	- 0.3%	+ 0.3%
	Yearling Female Store Cattle	2.36		+ 0.5%	- 1.0%	+ 0.3%
	Calves slaughtered <8M	522.6	€/100	- 2.2%	- 4.1%	+ 1.3%

Sources : MSs notifications (Regulation (EC) 1249/2008 and 807/2013)

19 April 2018

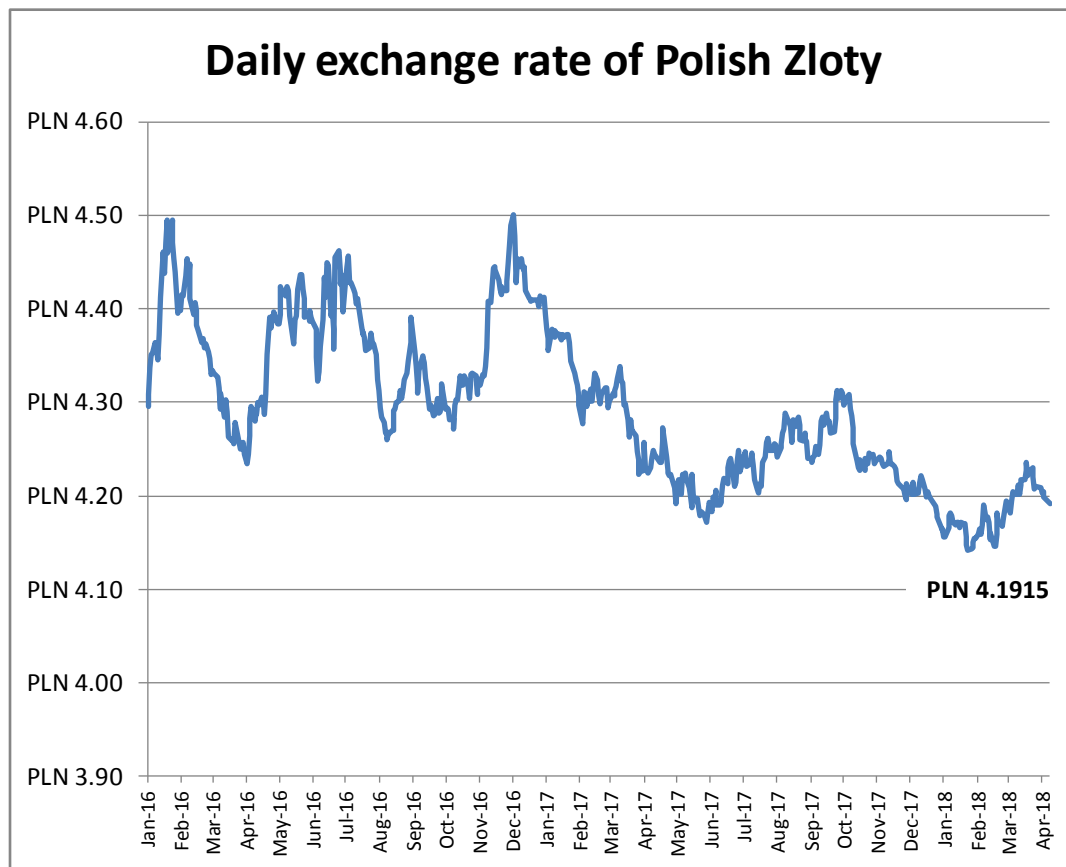
EXCHANGE RATE INDEX / Euro



Source : ECB

19 April 2018

EXCHANGE RATE INDEX / Euro



19 April 2018

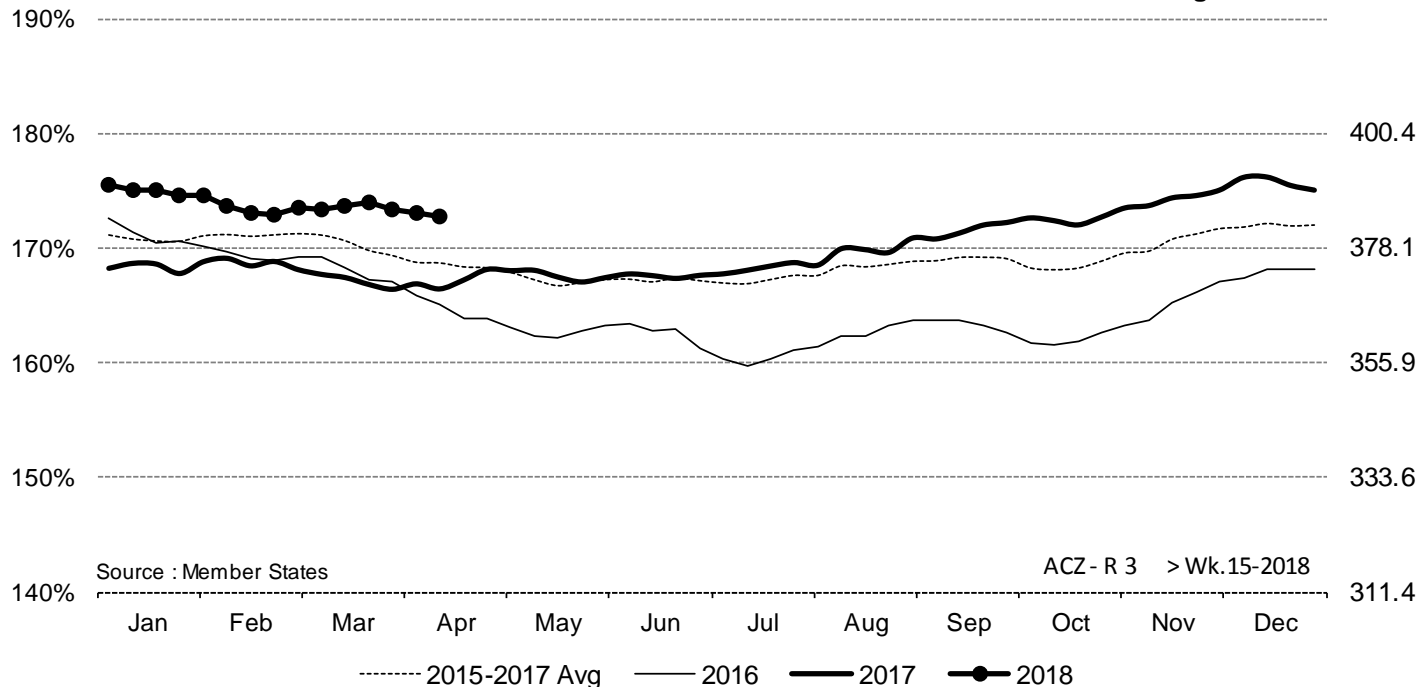
PRICES CARCASSES

EU EVOLUTION A/C/Z.R3

ACZ - R 3 > Wk.15-2018

% of Reference Price

€/100 kg cwe



Price in week 15 : **384.09**

% change y/y : **+ 3.8%**

% Ref. Price in wk 15 : **166.4%**

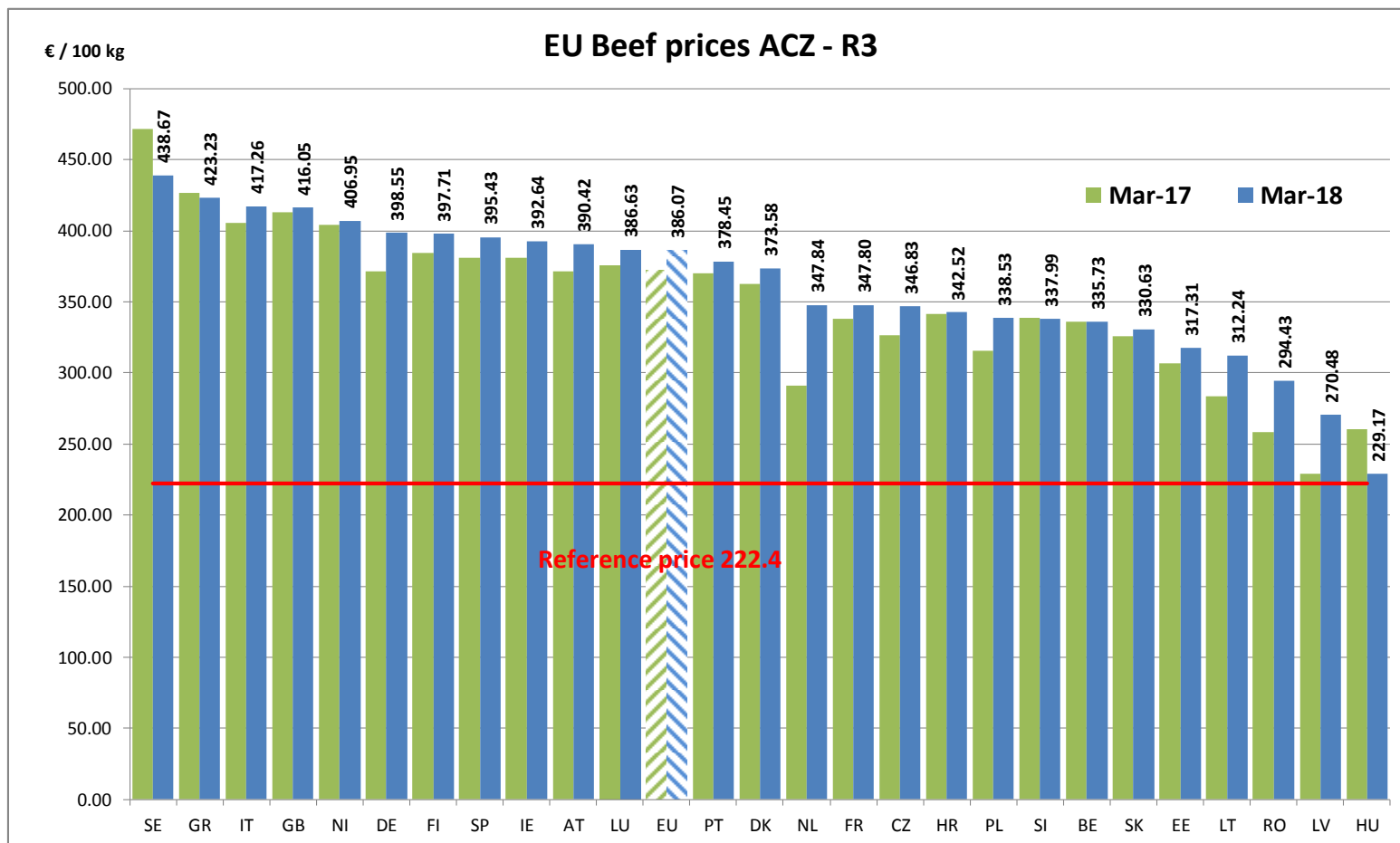
Average price in March 2018 : **386.07**

% change y/y : **+ 3.8%**

19 April 2018

PRICES CARCASSES

EU EVOLUTION
A/C/Z.R3

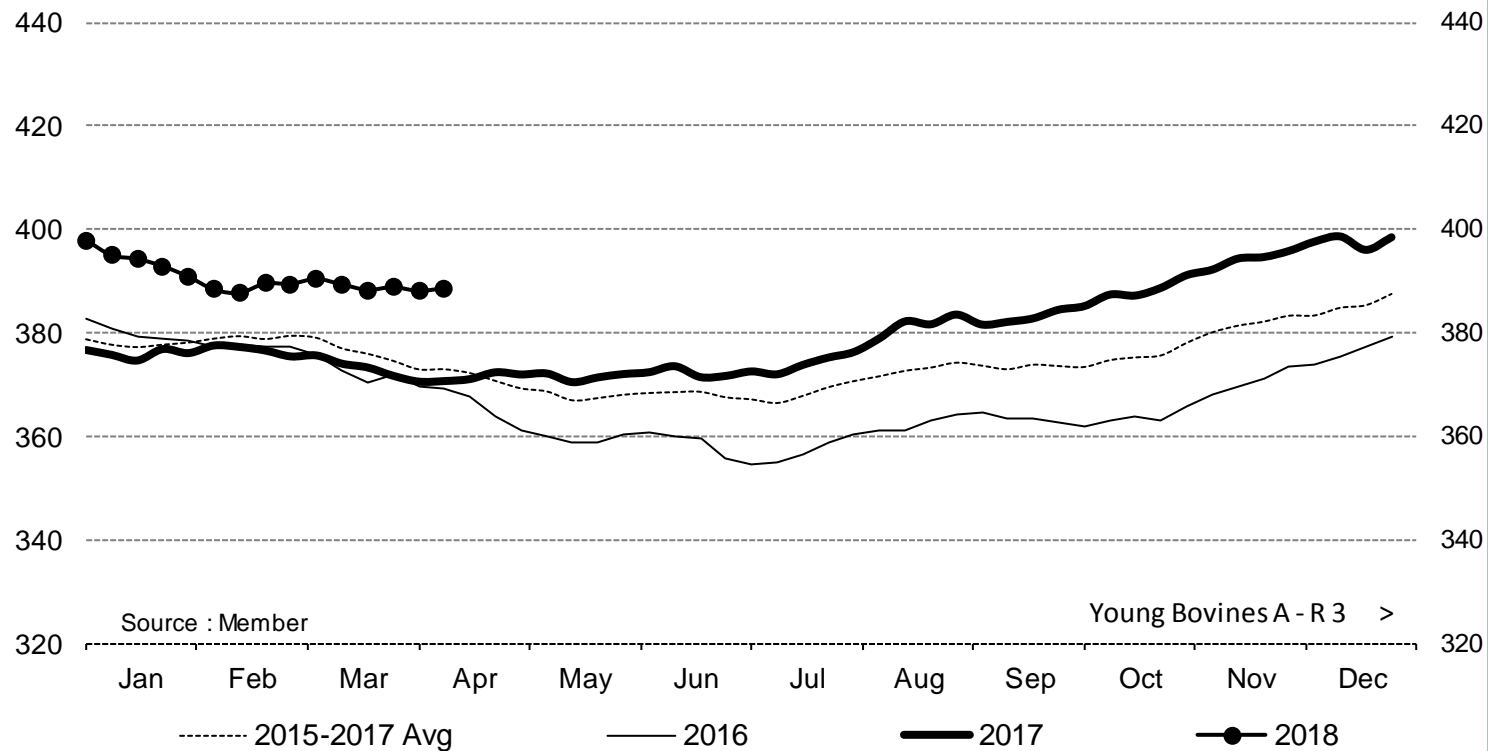


19 April 2018

PRICES CARCASSES

EU EVOLUTION YOUNG BULL - A.R3

Young Bovines A - R 3 > Wk.15-2018



Price in week 15 : **388.62**
% change y/y : **+ 4.9%**

Average price in March 2018 : **389.24**
% change y/y : **+ 4.1%**

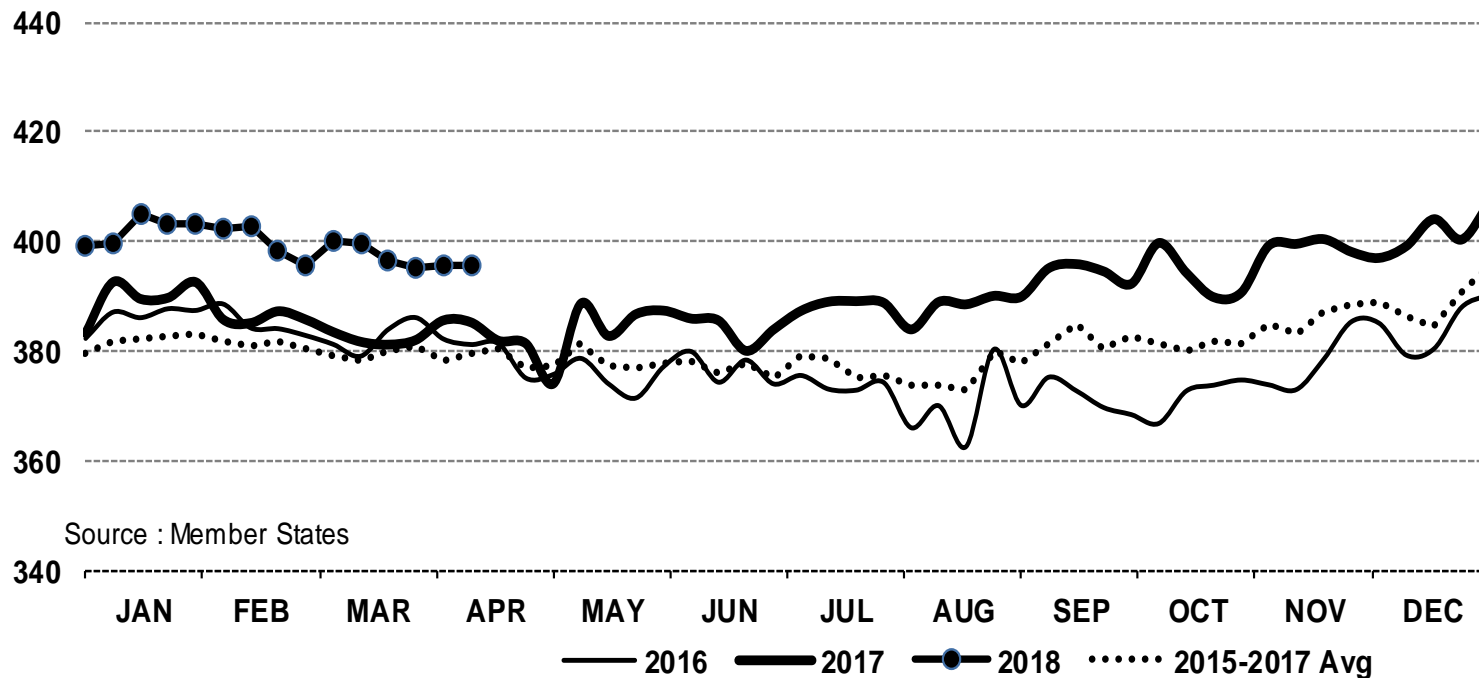
19 April 2018

PRICES CARCASSES

E.U. EVOLUTION YOUNG BOVINE 8-12M- Z.R3

In € / 100 kg

Young Bovines 8-12m Z - R 3 > Wk.15-2018



Price in week 15 : **395.50**
% change y/y : **+ 2.7%**

20/03/2018

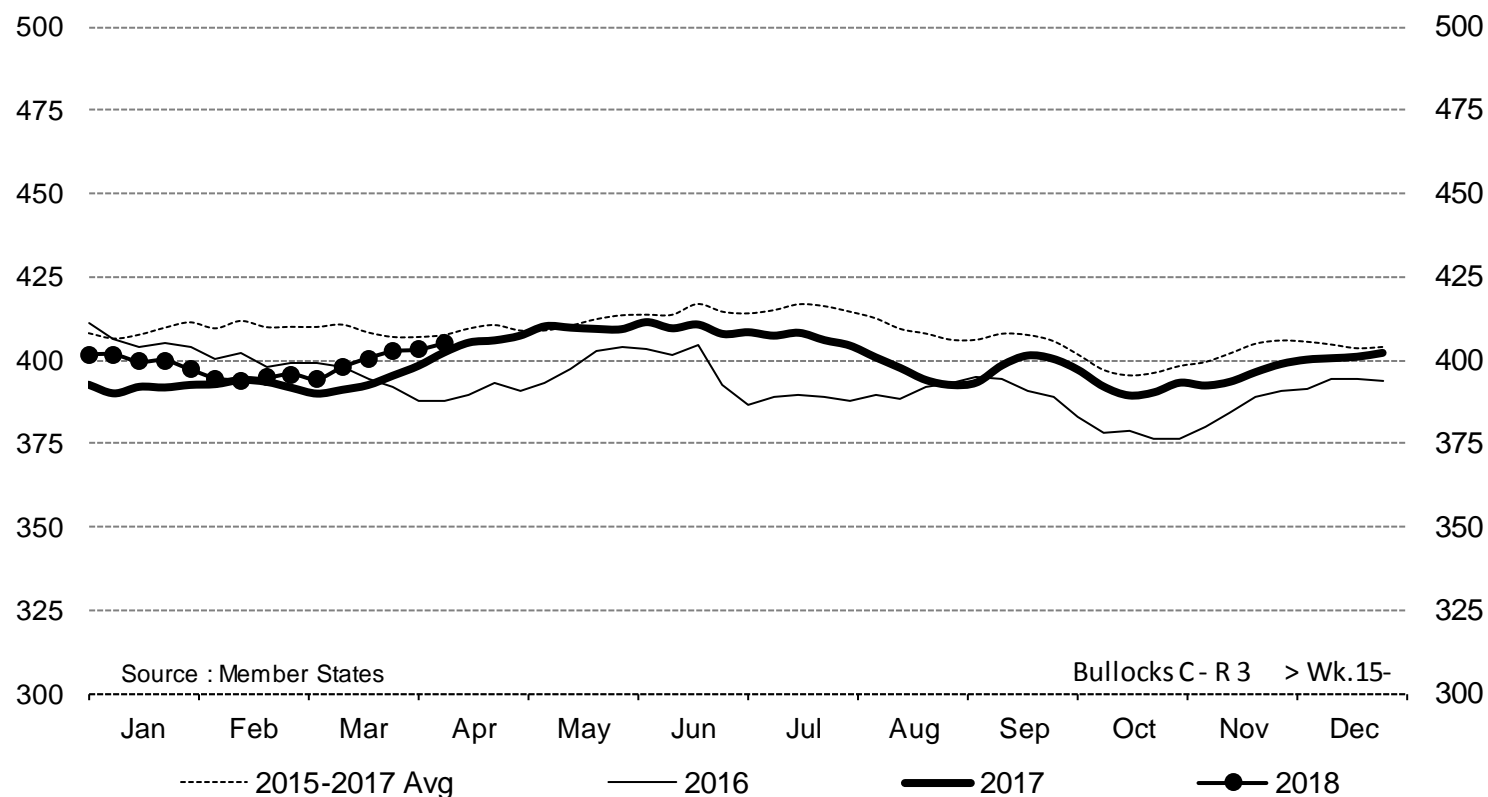
Average price in March 2018 : **397.65**
% change y/y : **+ 3.9%**

19 April 2018

PRICES CARCASSES

E.U. EVOLUTION STEER - C.R3

Bullocks C - R 3 > Wk.15-2018



Price in week 15 : **404.96**
% change y/y : **+ 0.7%**

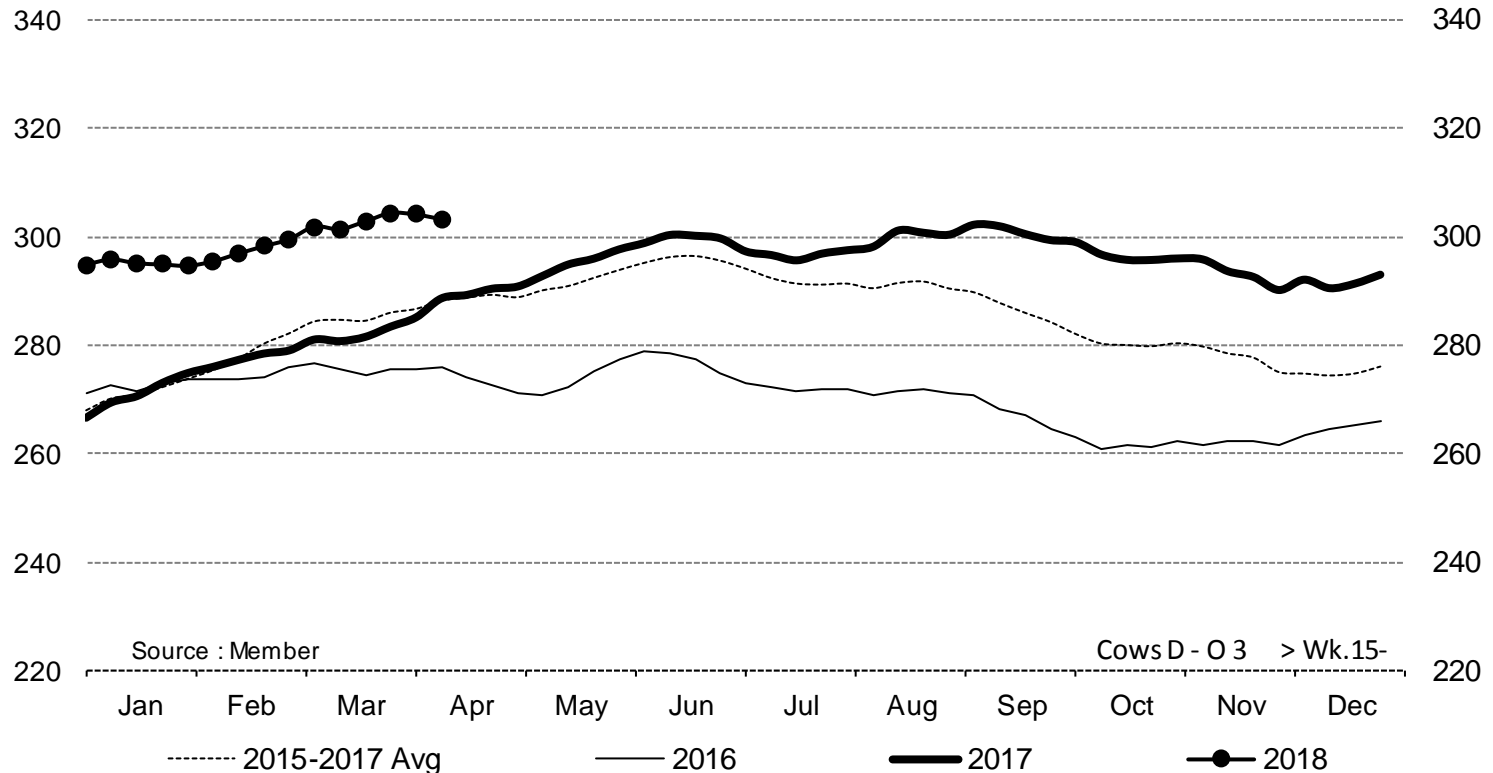
Average price in March 2018 : **398.30**
% change y/y : **+ 1.6%**

19 April 2018

PRICES CARCASSES

E.U. EVOLUTION COW - D.O3

Cows D - O 3 > Wk.15-2018



Price in week 15 : **303.28**
% change y/y : **+ 5.1%**

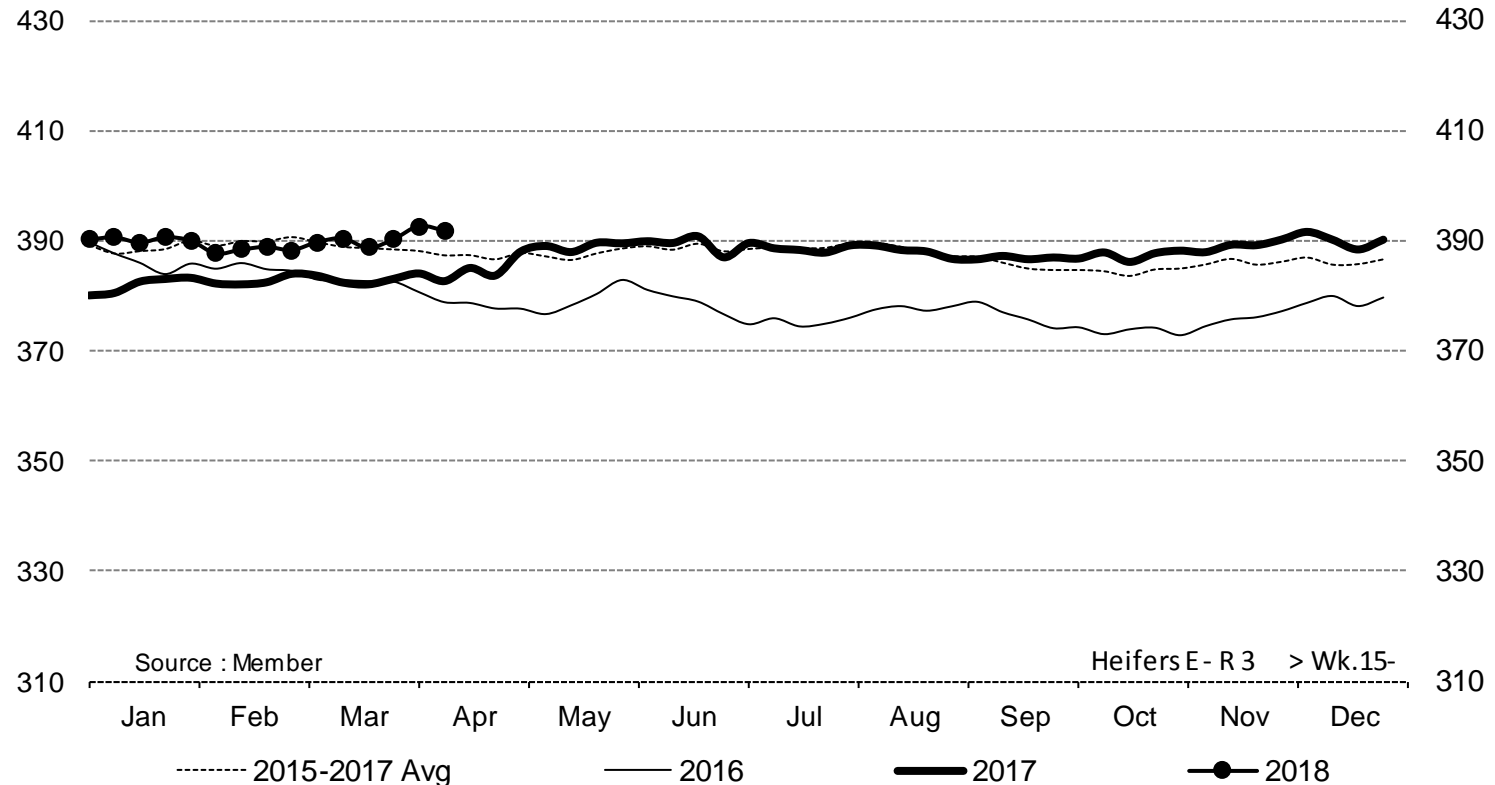
Average price in March 2018 : **302.21**
% change y/y : **+ 7.5%**

19 April 2018

PRICES CARCASSES

EU EVOLUTION HEIFER - E.R3

Heifers E - R 3 > Wk.15-2018



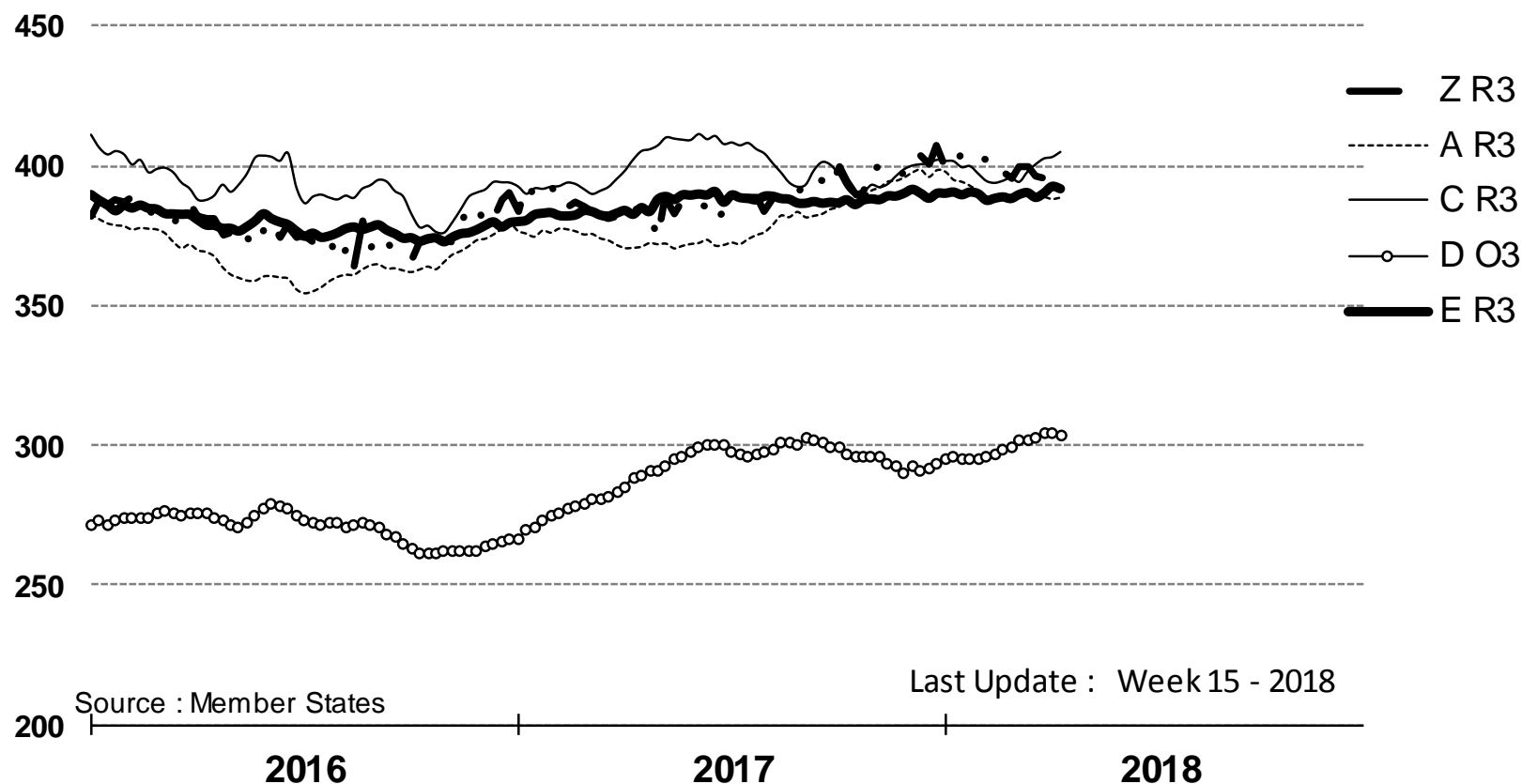
Price in week 15 : **391.76**
% change y/y : **+ 2.4%**

Average price in March 2018 : **389.55**
% change y/y : **+ 1.7%**

19 April 2018

PRICES CARCASSES

EU EVOLUTION All CAT GLOBAL VIEW

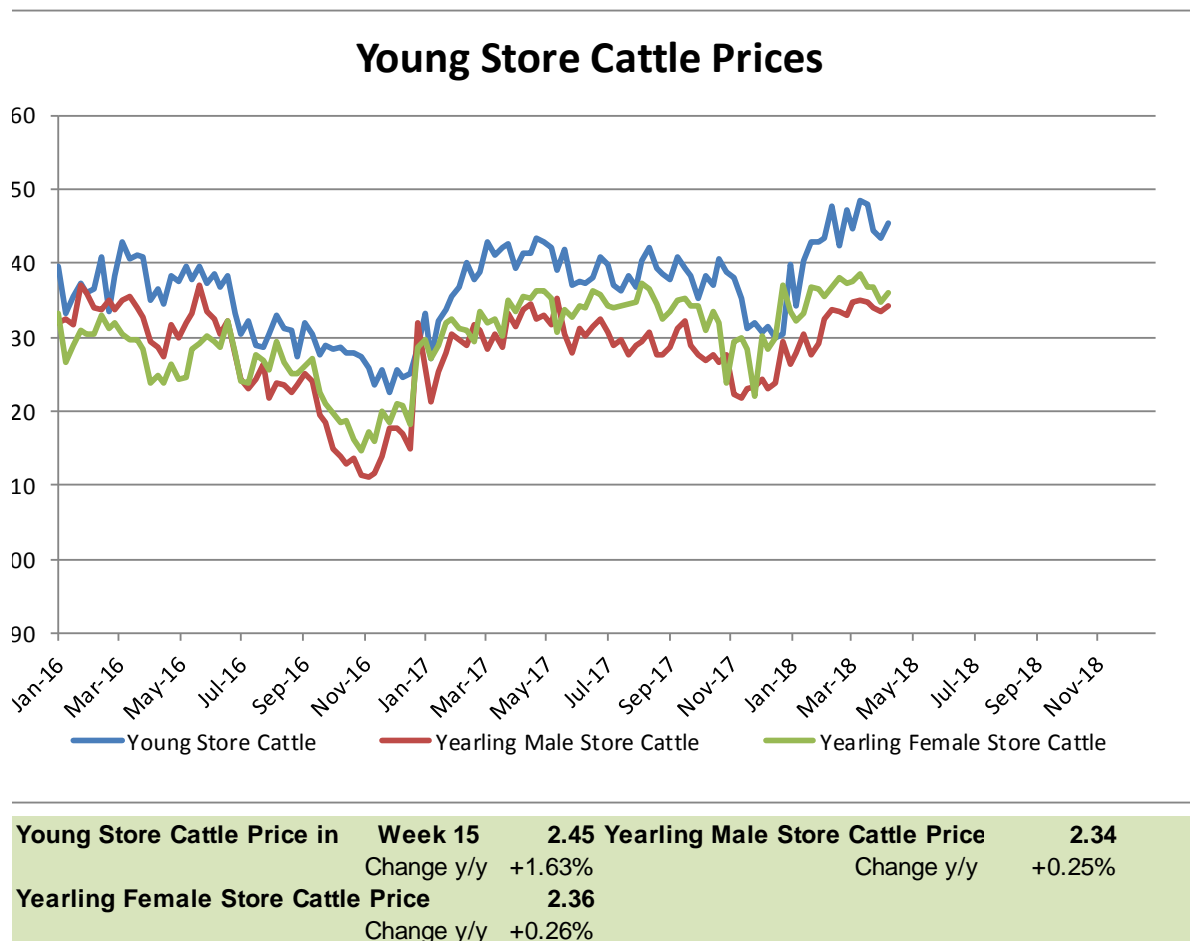


19 April 2018

PRICES LIVE BOVINES

EU EVOLUTION STORE CATTLE

Store cattle (€/100 kg live weight)

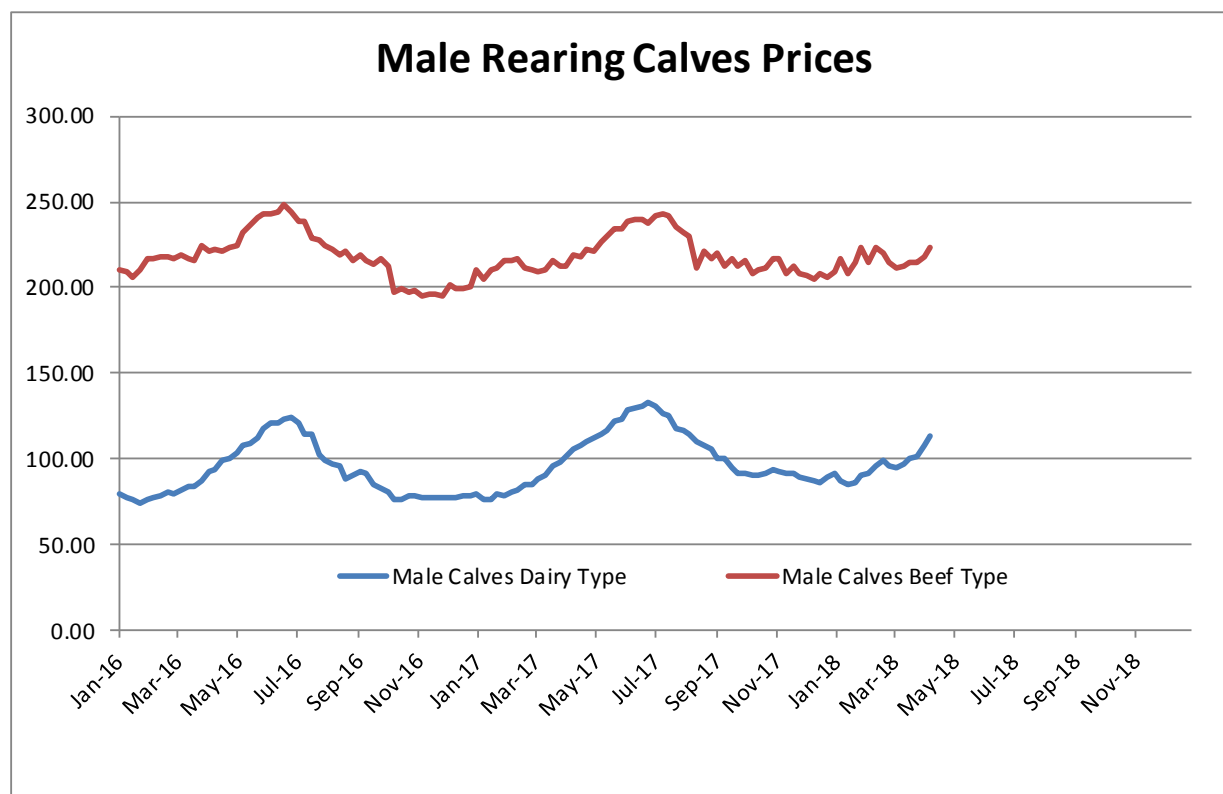


19 April 2018

PRICES LIVE BOVINES

EU EVOLUTION Male Calves – 8D4W

Male calves aged between 8 days and 4 weeks (€/head)



Male Rearing Calves Beef type

Price in Week 15 223.26
Change y/y +2.13%

Male Rearing Calves Dairy type

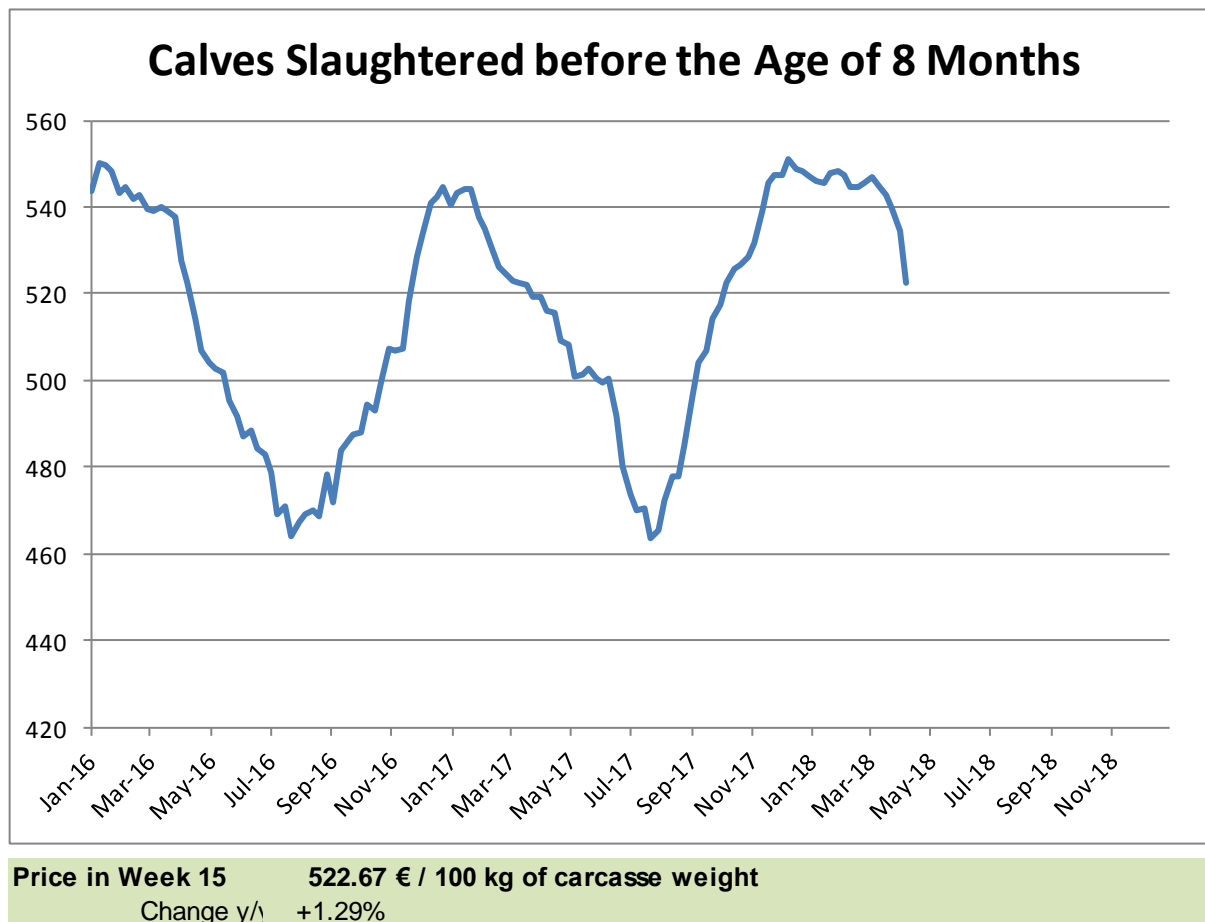
Price in Week 15 112.99
Change y/y +7.25%

19 April 2018

PRICES LIVE BOVINES

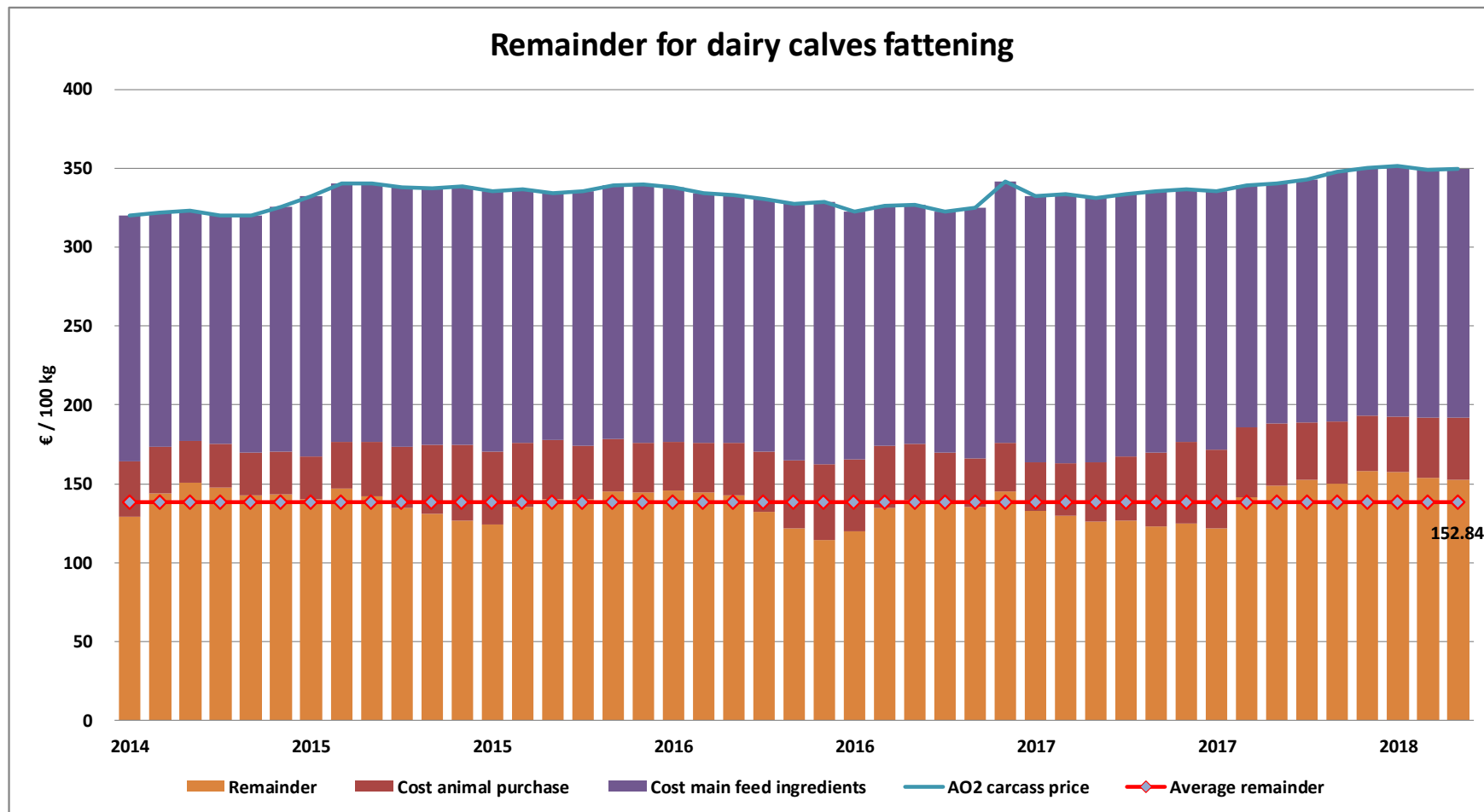
EU EVOLUTION Butcher Calves

Calves slaughtered before the age of less than 8 months
(€/100 kg cw)



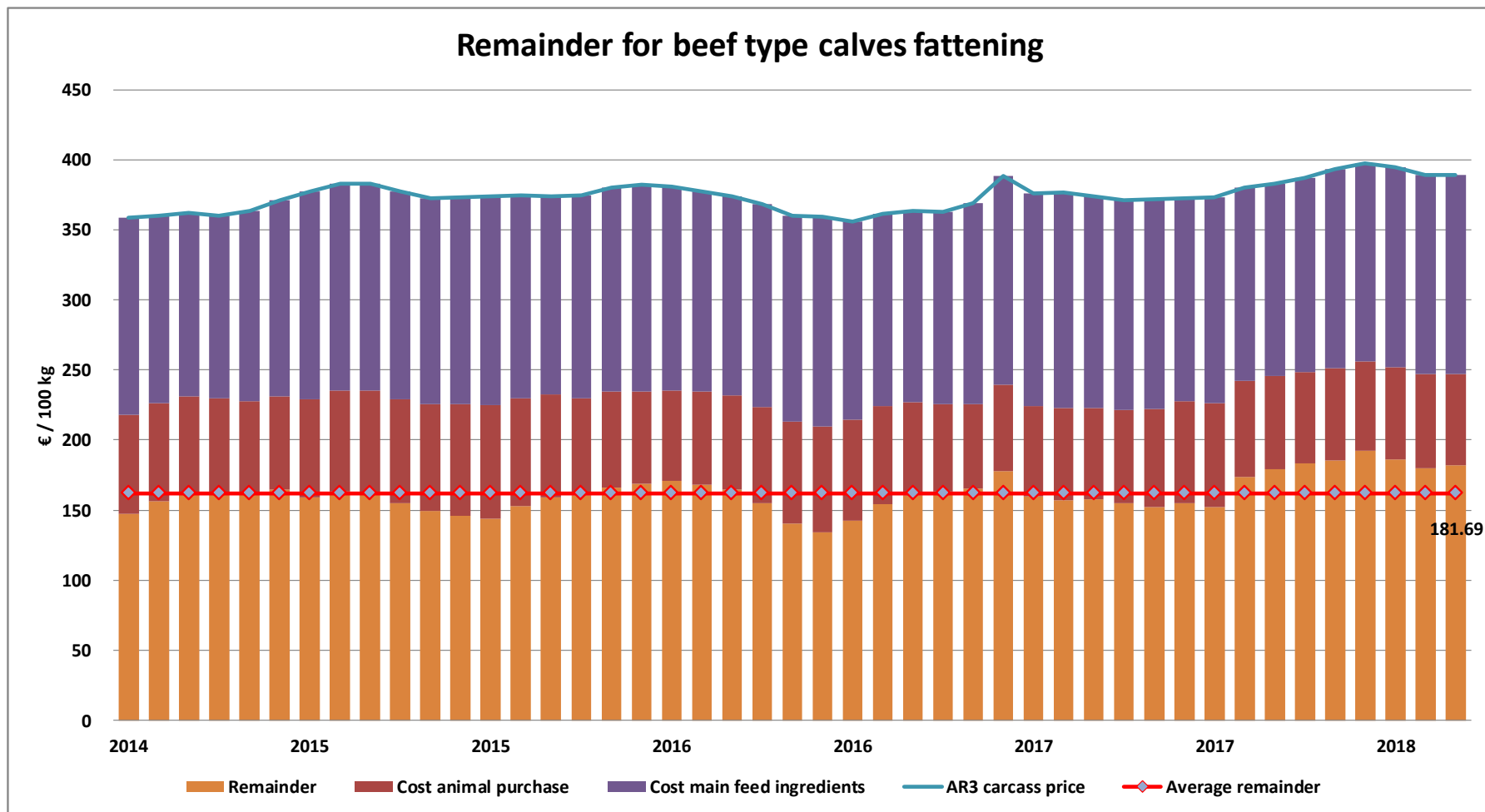
19 April 2018

REMAINDERS



19 April 2018

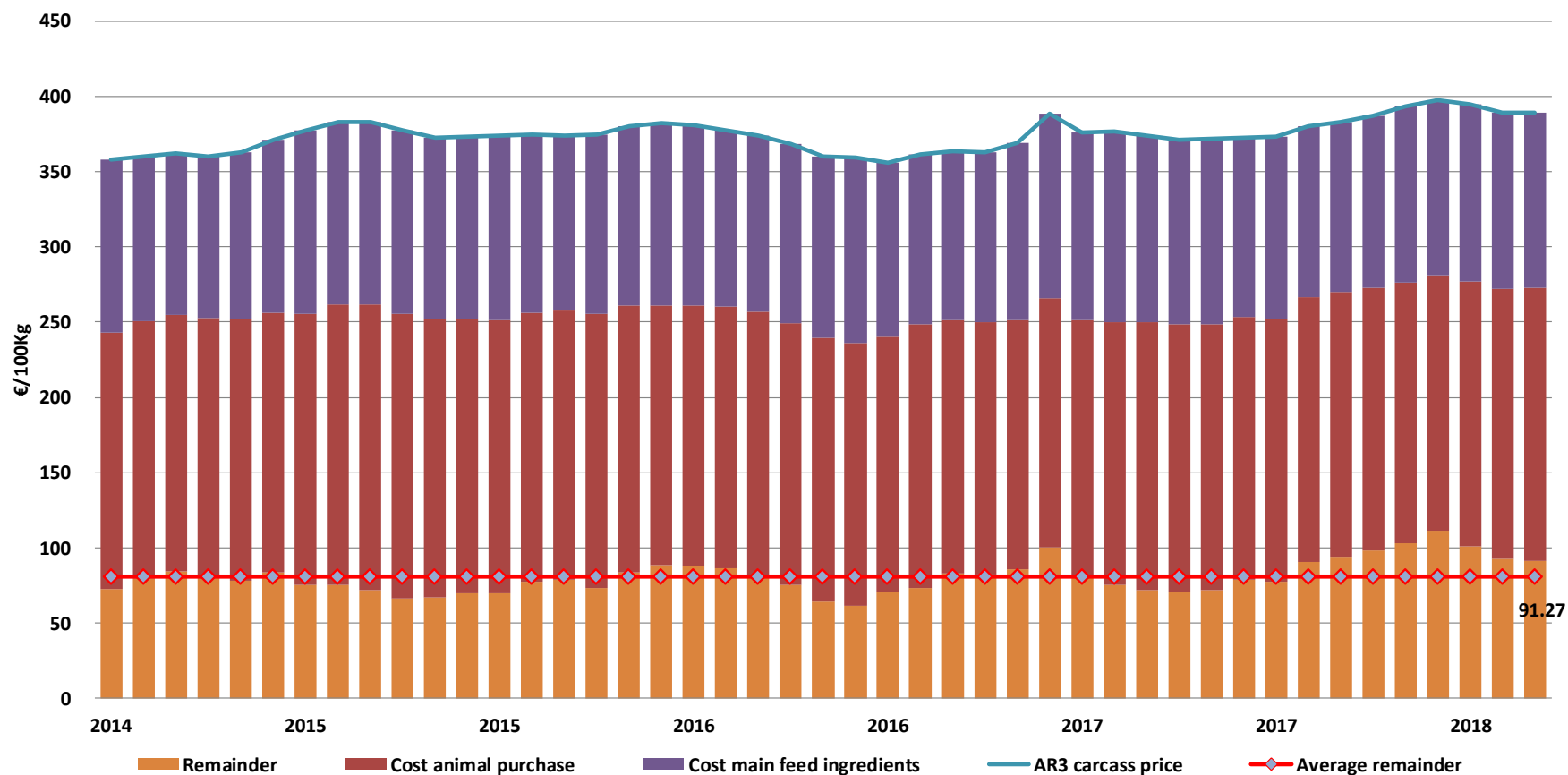
REMAINDERS



19 April 2018

REMAINDERS

Remainder for young store cattle fattening



19 April 2018

TRADE

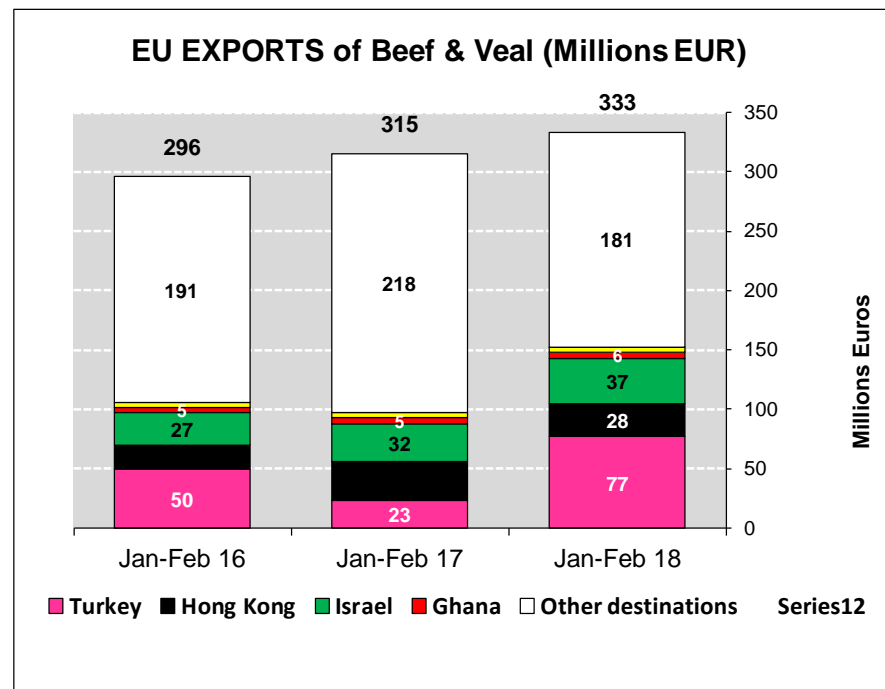
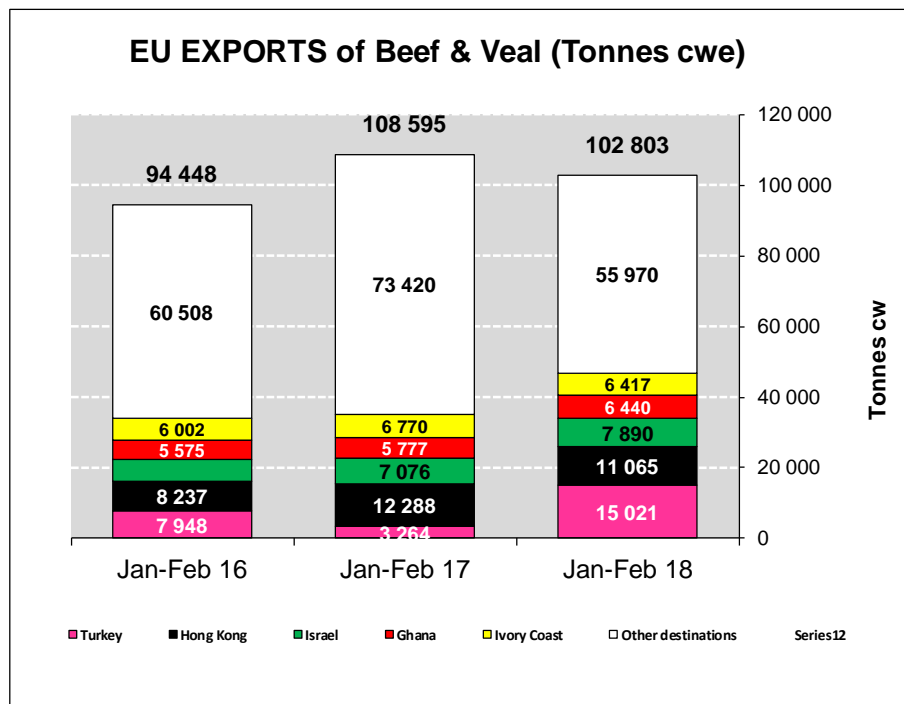
EU EXPORTS

Beef & Live Animals

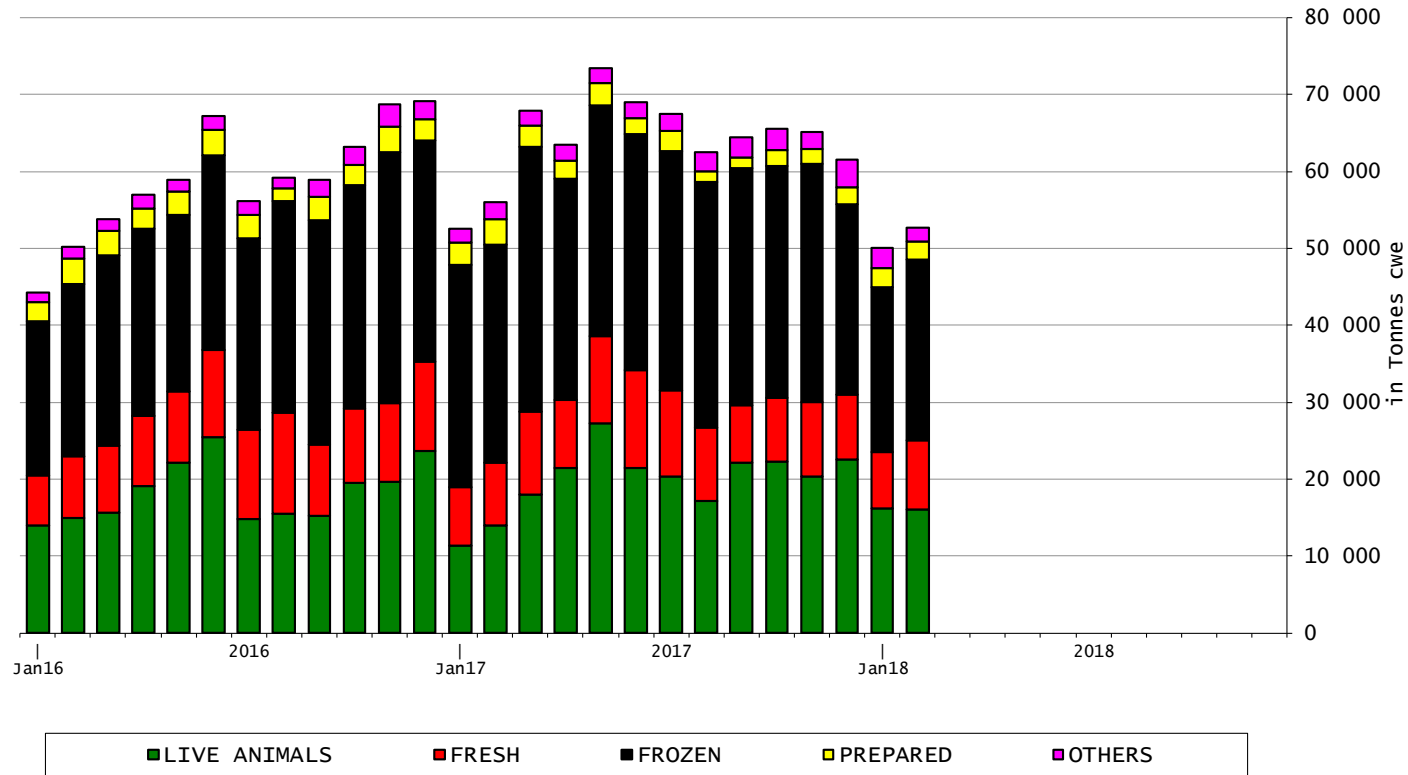
EU exports of beef and live animals (1): Trade figures (COMEXT – tonnes cwe)

Destinations	2014		2015		2016		2017		Jan-Feb 18		Compared to Jan-Feb 17
	tonnes	%	tonnes	%	tonnes	%	tonnes	%	tonnes	%	
Turkey	5 086	1.1%	8 098	1.4%	57 504	9.6%	71 035	10.1%	15 021	14.6%	+++
Hong Kong	28 573	6.3%	65 112	11.6%	45 198	7.6%	58 416	8.3%	11 065	10.8%	- 10.0%
Israel	9 378	2.1%	8 353	1.5%	18 851	3.2%	41 616	5.9%	7 890	7.7%	+ 11.5%
Ghana	40 878	9.0%	33 255	5.9%	37 364	6.3%	35 340	5.0%	6 440	6.3%	+ 11.5%
Ivory Coast	21 619	4.8%	28 839	5.2%	35 742	6.0%	36 713	5.2%	6 417	6.2%	- 5.2%
Lebanon	24 007	5.3%	37 984	6.8%	50 288	8.4%	47 033	6.7%	6 131	6.0%	- 7.1%
Algeria	25 911	5.7%	18 499	3.3%	16 085	2.7%	25 004	3.6%	5 031	4.9%	- 8.0%
Philippines	2 730	0.6%	11 839	2.1%	13 053	2.2%	24 247	3.5%	4 637	4.5%	- 3.6%
Bosnia-Herz.	24 068	5.3%	34 104	6.1%	39 896	6.7%	38 935	5.5%	3 769	3.7%	- 24.8%
Switzerland	26 347	5.8%	26 633	4.8%	26 019	4.4%	25 608	3.6%	3 517	3.4%	- 15.0%
Libya	17 778	3.9%	14 280	2.6%	19 691	3.3%	29 723	4.2%	2 273	2.2%	- 30.2%
Angola	10 589	2.3%	14 587	2.6%	9 643	1.6%	13 549	1.9%	1 915	1.9%	- 24.3%
Chile	1	0.0%	27	0.0%	50	0.0%	2 228	0.3%	1 655	1.6%	+ 24.8%
South Africa	3 339	0.7%	1 325	0.2%	7 481	1.3%	7 361	1.0%	1 543	1.5%	+ 20.2%
Ukraine	3 500	0.8%	2 922	0.5%	2 859	0.5%	7 875	1.1%	1 442	1.4%	+ 11.1%
For.JRep.Mac	10 577	2.3%	11 370	2.0%	12 561	2.1%	11 776	1.7%	1 375	1.3%	- 17.7%
Morocco	5 986	1.3%	7 652	1.4%	4 703	0.8%	7 517	1.1%	1 196	1.2%	- 1.1%
Other Destinations	192 171	42.5%	234 358	41.9%	199 289	33.4%	217 699	31.0%	21 485	20.9%	
Extra-EU	452 537		559 237		596 276		701 677		102 803		
% change			+ 24%		+ 7%		+ 18%		- 5.3%		

EU exports of beef and live animals: Trade figures (COMEXT)



EU-28 Exports of BEEF products

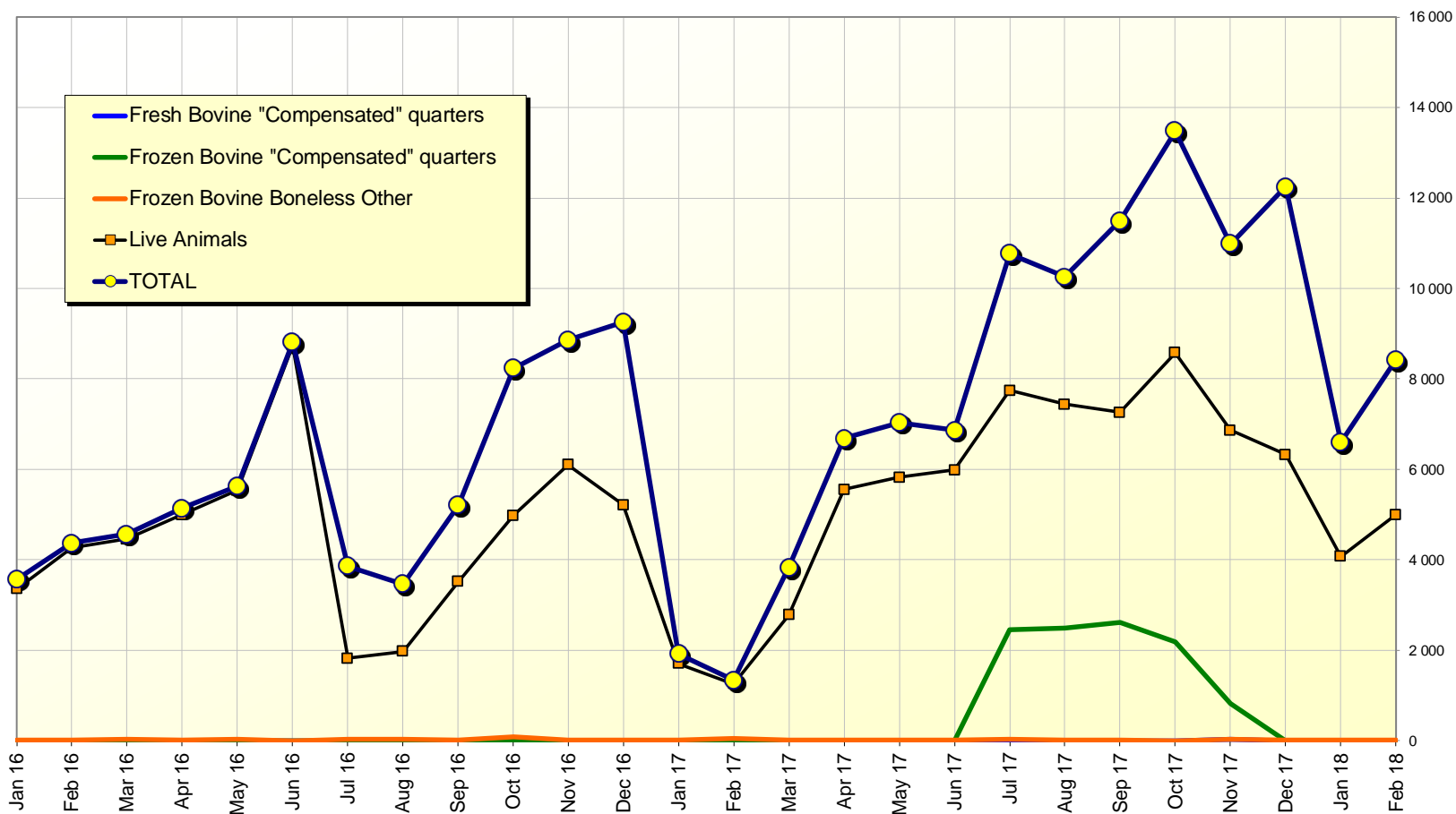


TRADE

EU EXPORTS

Beef to TURKEY

EU beef Exports to TURKEY
Trade figures (COMEXT data) *tonnes cwe*

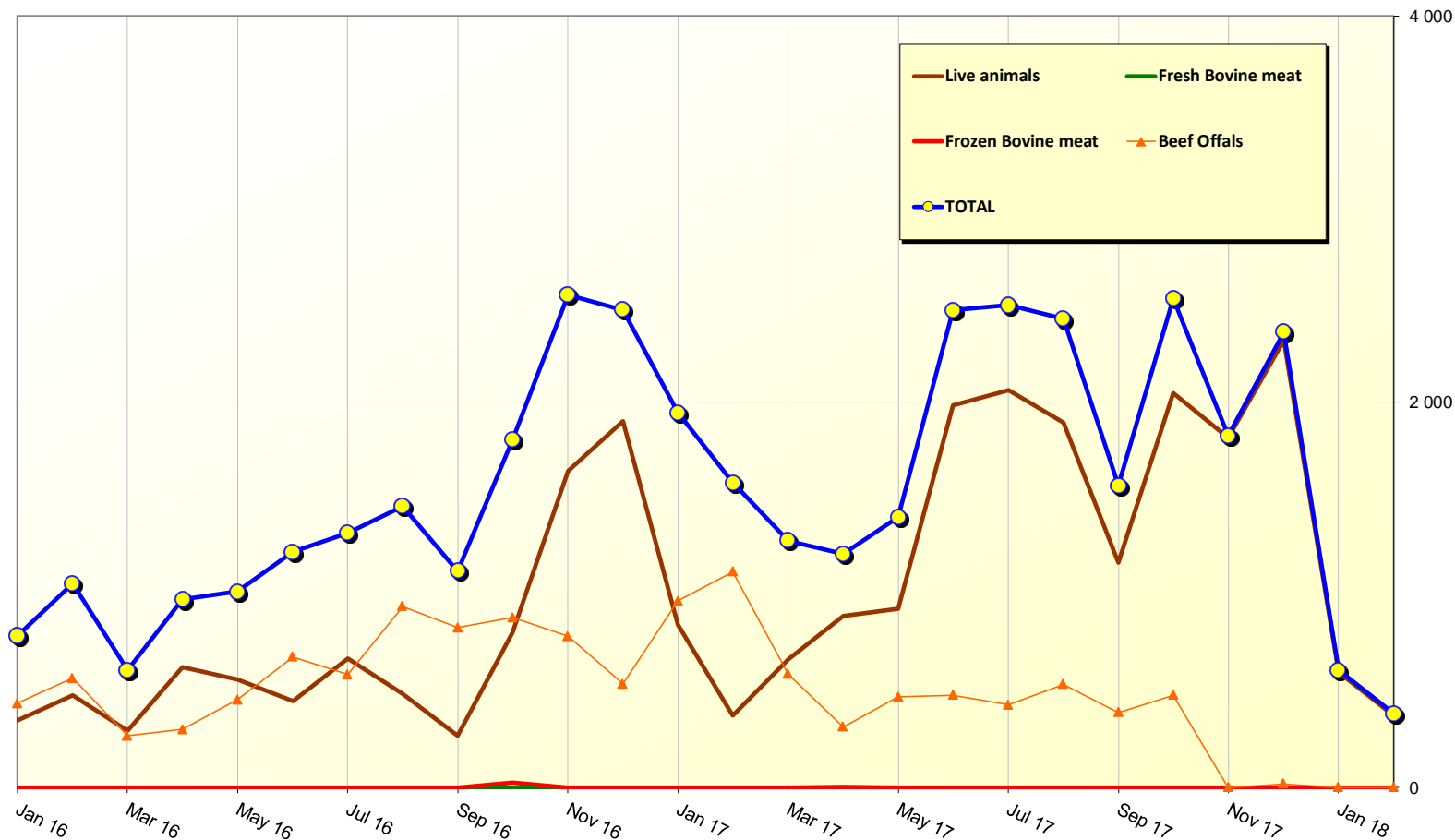


19 April 2018

TRADE

EU EXPORTS Beef to RUSSIA

EU beef Exports to RUSSIA
Trade figures (COMEXT data) *tonnes cwe*

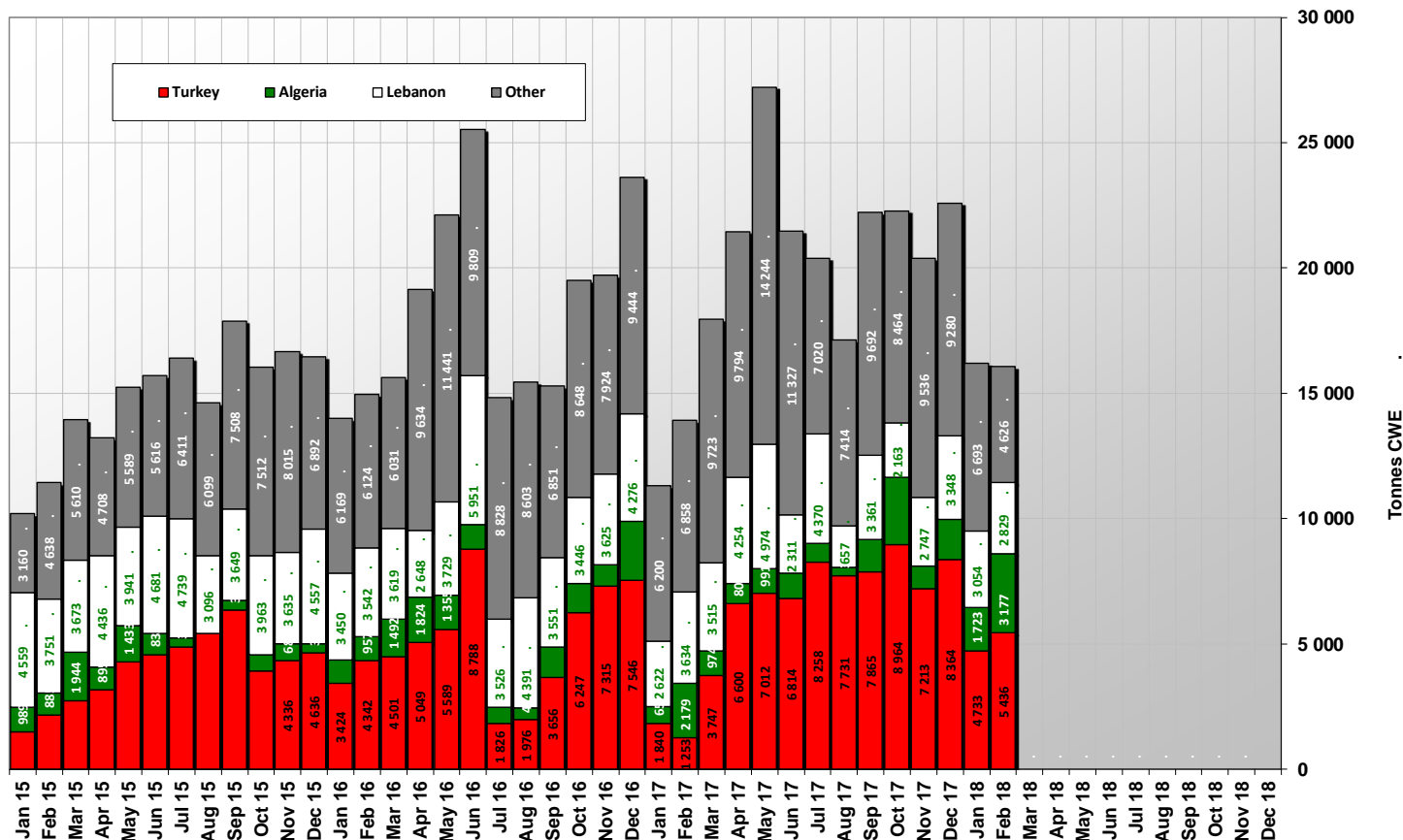


19 April 2018

TRADE

EU EXPORTS Live Animals

EU-28 Exports of LIVE Bovine Animals
(Source COMEXT - Tonnes cwe)

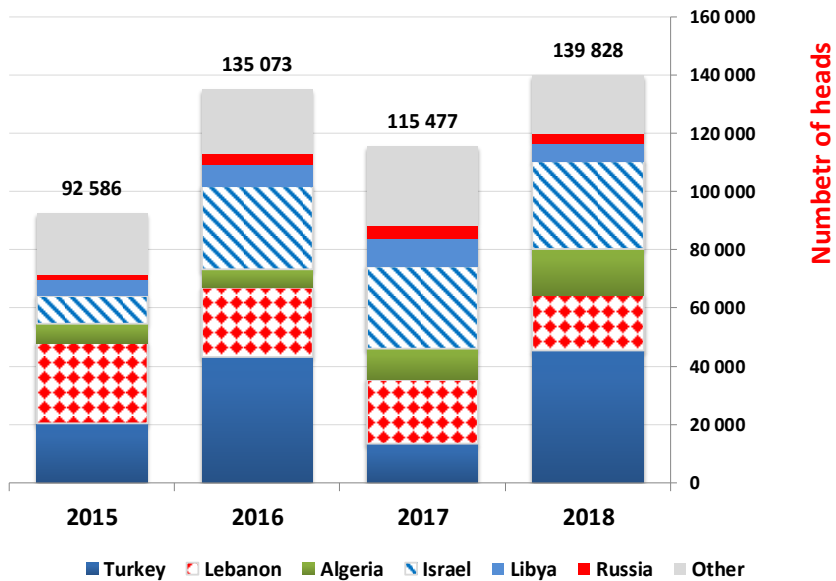


19 April 2018

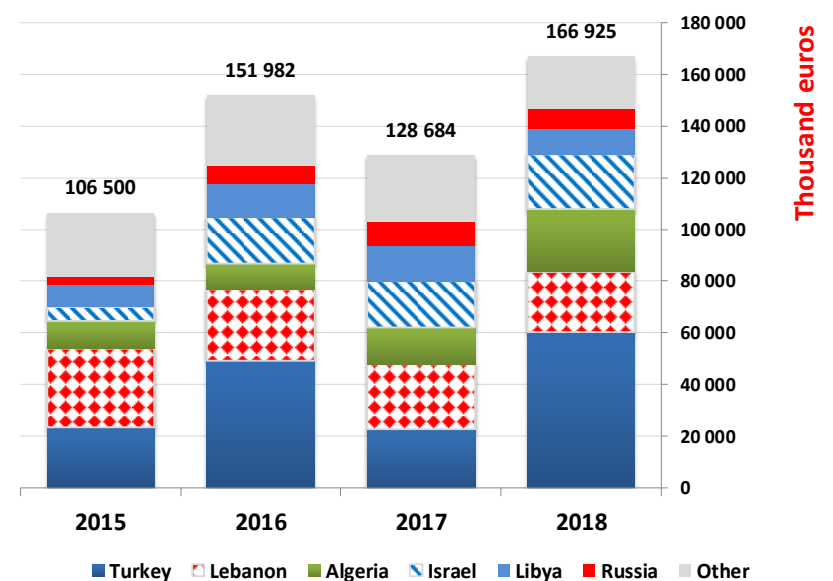
TRADE

EU EXPORTS Live Animals

EU Exports of BEEF live animals by partner for the period Jan-Feb 2018



EU Exports of BEEF live animals by partner for the period Jan-Feb 2018



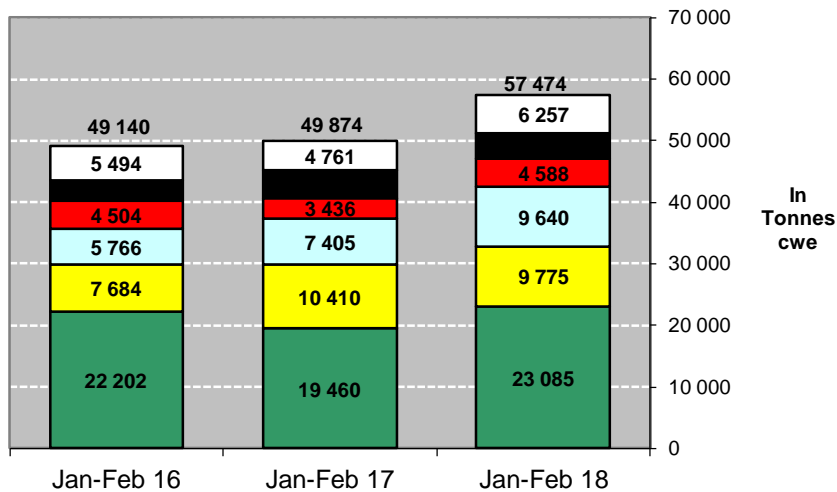
19 April 2018

EU imports of beef and live animals (1): Trade figures (COMEXT – tonnes cwe)

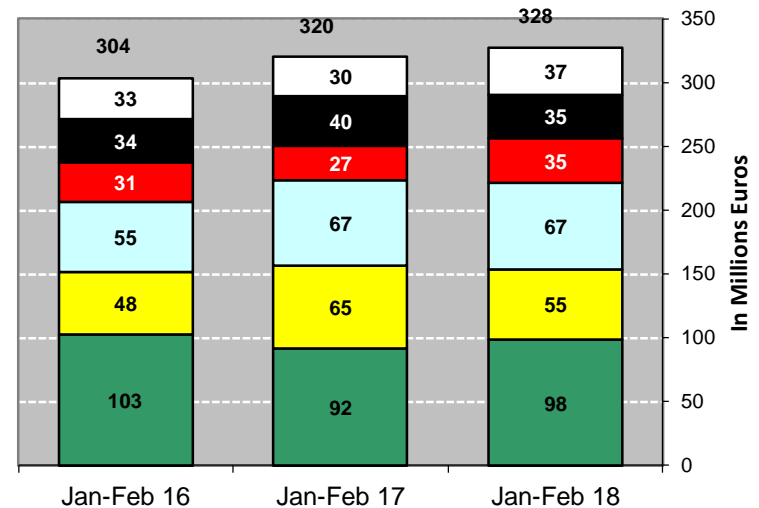
Origins	2014		2015		2016		2017		Jan-Feb 18		Compared to Jan-Feb 17
	tonnes	%	tonnes	%	tonnes	%	tonnes	%	tonnes	%	
Brazil	145 435	43.5%	144 259	43.4%	136 803	42.3%	140 291	42.0%	23 085	40.2%	+ 18.6%
Uruguay	51 377	15.4%	49 043	14.8%	46 287	14.3%	56 703	17.0%	9 775	17.0%	- 6.1%
Argentina	47 976	14.3%	42 074	12.7%	42 149	13.0%	43 558	13.0%	9 640	16.8%	+ 30.2%
Australia	28 074	8.4%	32 653	9.8%	30 884	9.6%	27 794	8.3%	4 588	8.0%	+ 33.5%
USA	22 297	6.7%	23 234	7.0%	24 132	7.5%	20 482	6.1%	4 129	7.2%	- 6.2%
New Zealand	13 827	4.1%	14 432	4.3%	11 380	3.5%	9 906	3.0%	1 484	2.6%	+ 22.3%
Paraguay	0	0.0%	0	0.0%	1 915	0.6%	5 947	1.8%	1 186	2.1%	+ 44.8%
Namibia	11 113	3.3%	9 994	3.0%	12 112	3.7%	10 685	3.2%	1 095	1.9%	+ 89.2%
Botswana	6 280	1.9%	6 424	1.9%	9 258	2.9%	9 382	2.8%	976	1.7%	+ 24.8%
Switzerland	4 284	1.3%	5 456	1.6%	5 090	1.6%	5 500	1.6%	883	1.5%	+ 2.5%
Serbia	619	0.2%	425	0.1%	439	0.1%	557	0.2%	147	0.3%	+ 44.5%
Canada	965	0.3%	780	0.2%	428	0.1%	421	0.1%	74	0.1%	+ 29.0%
Norway	201	0.1%	347	0.1%	481	0.1%	277	0.1%	64	0.1%	+++
Other Origins	2 181	0.7%	3 240	1.0%	1 687	0.5%	2 365	0.7%	349	0.6%	
Extra-EU	334 630		332 362		323 043		333 868		57 474		
% change			- 1%		- 3%		+ 3%		+ 15.2%		

EU imports of beef and live animals (2): Trade figures (COMEXT)

IMPORTS of Beef & Veal into EU (Tonnes cwe)



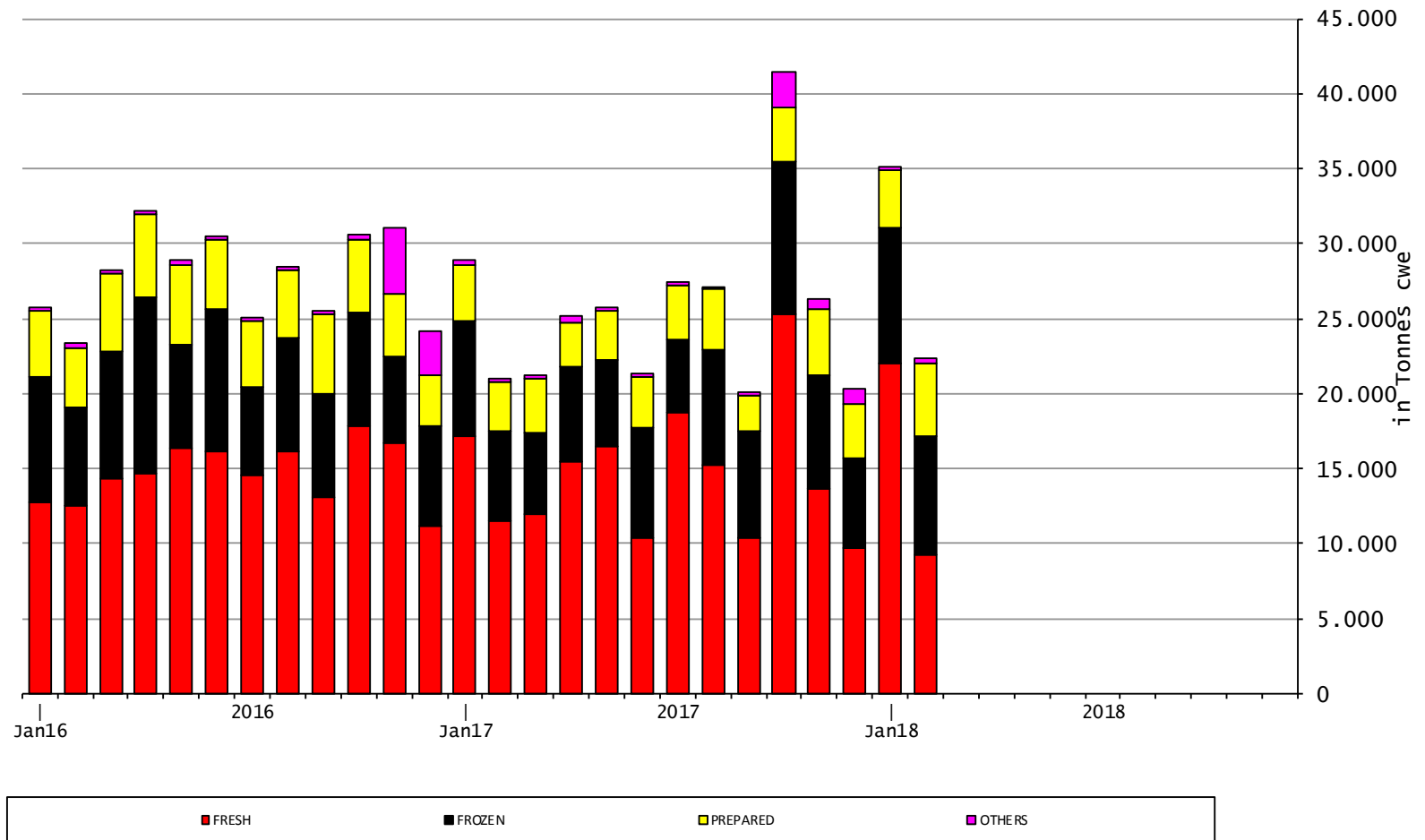
IMPORTS of Beef & Veal into EU (Millions EUR)



TRADE

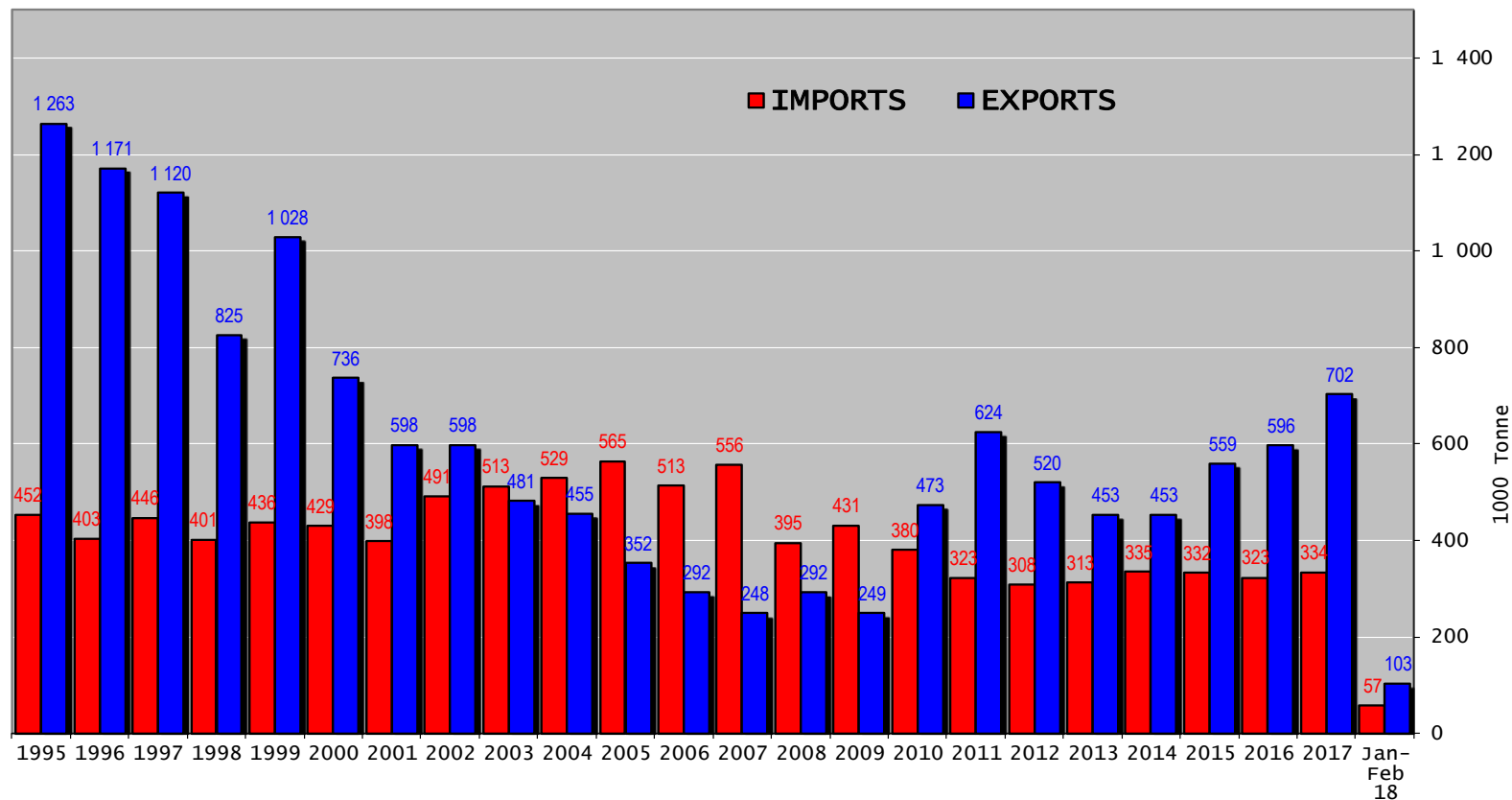
EU IMPORTS Beef Products

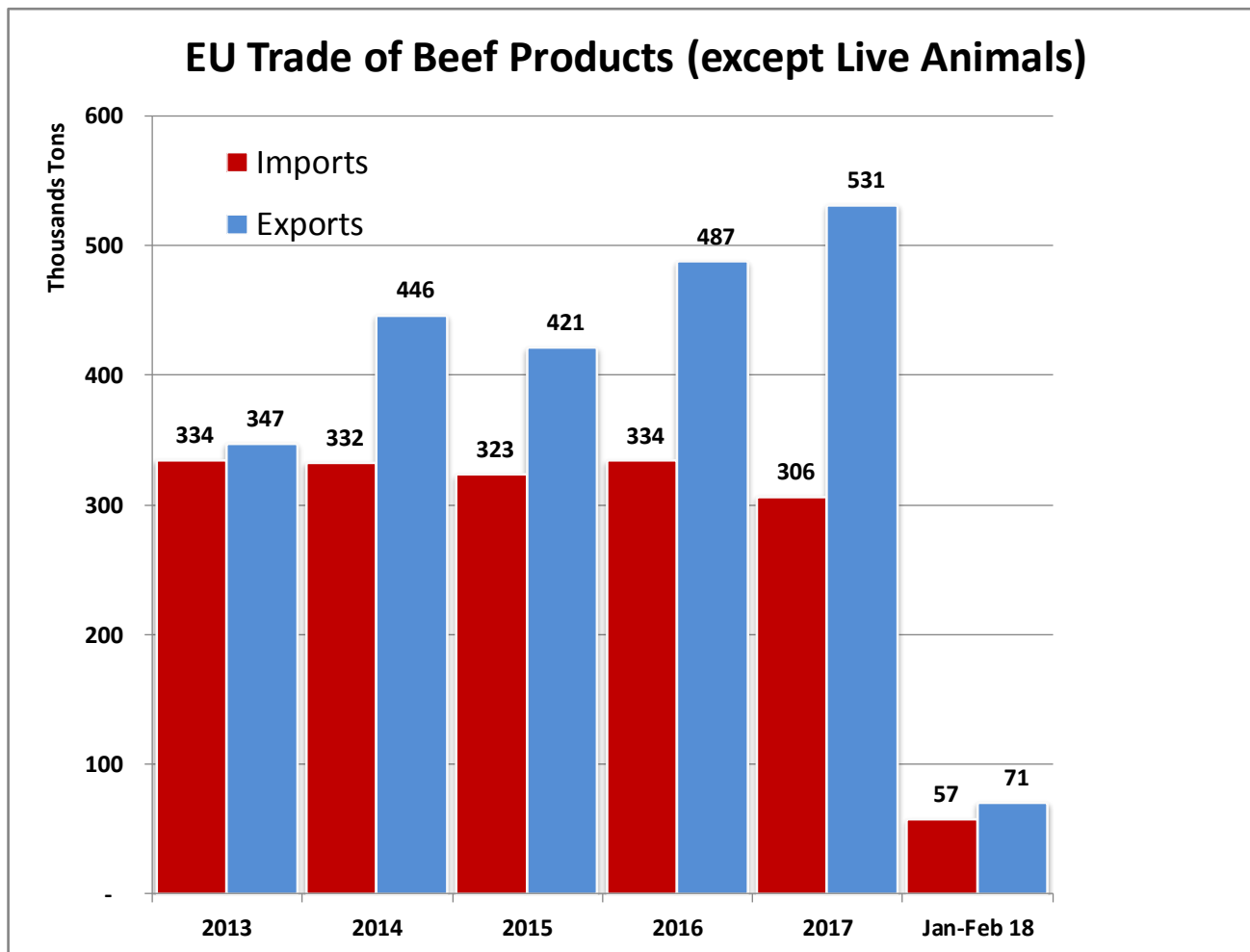
EU-28 Imports of BEEF products



19 April 2018

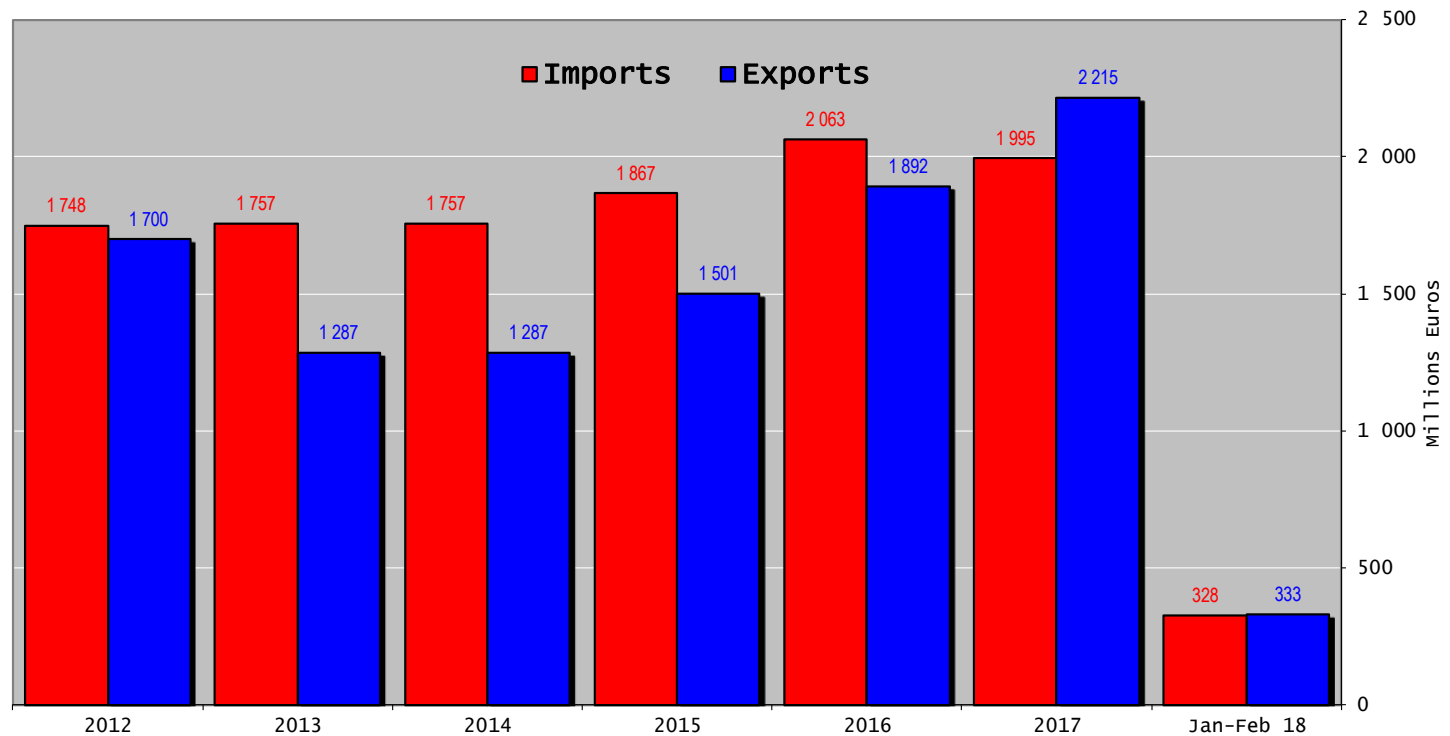
Trade balance of beef and live animals

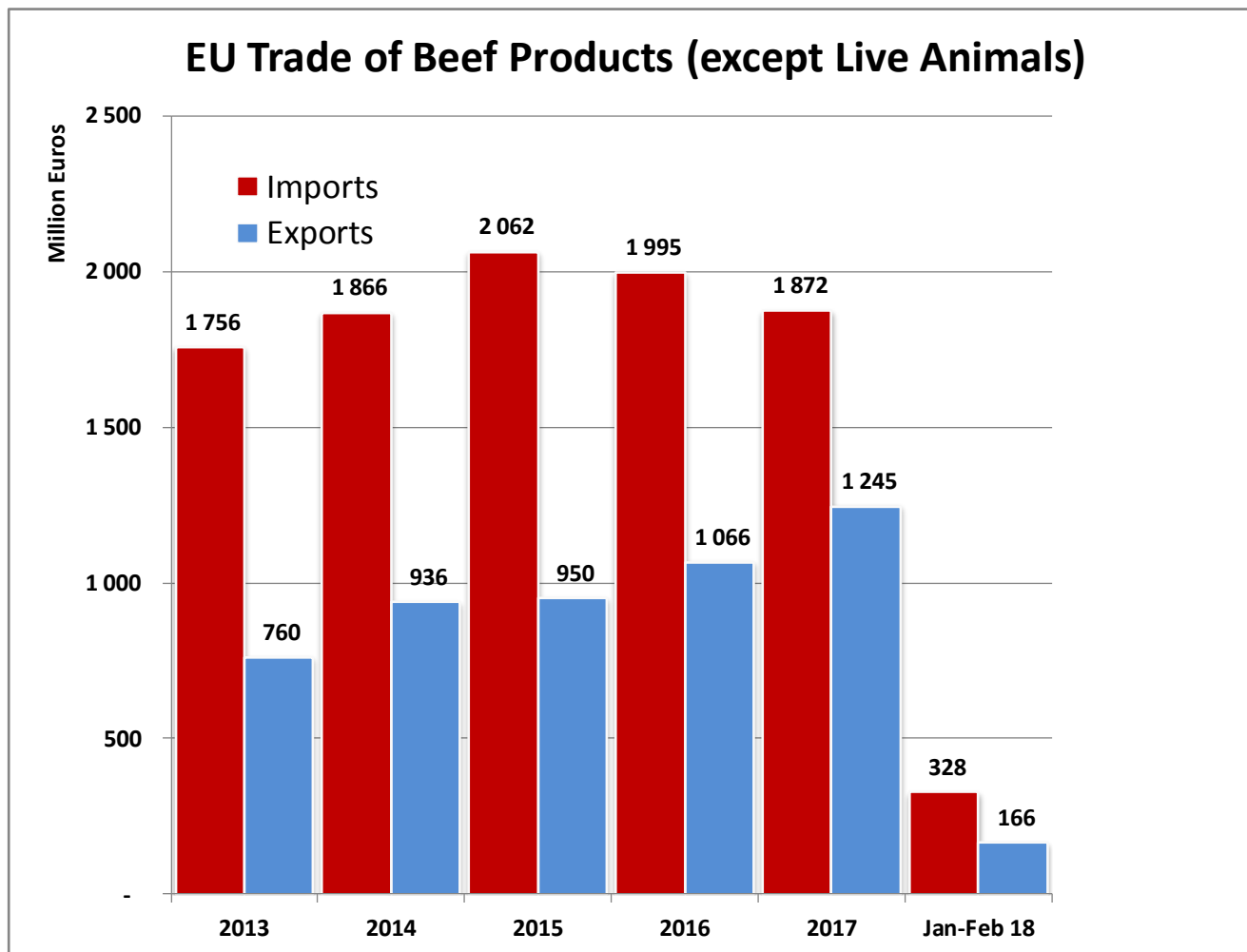




19 April 2018

Trade balance of beef and live animals



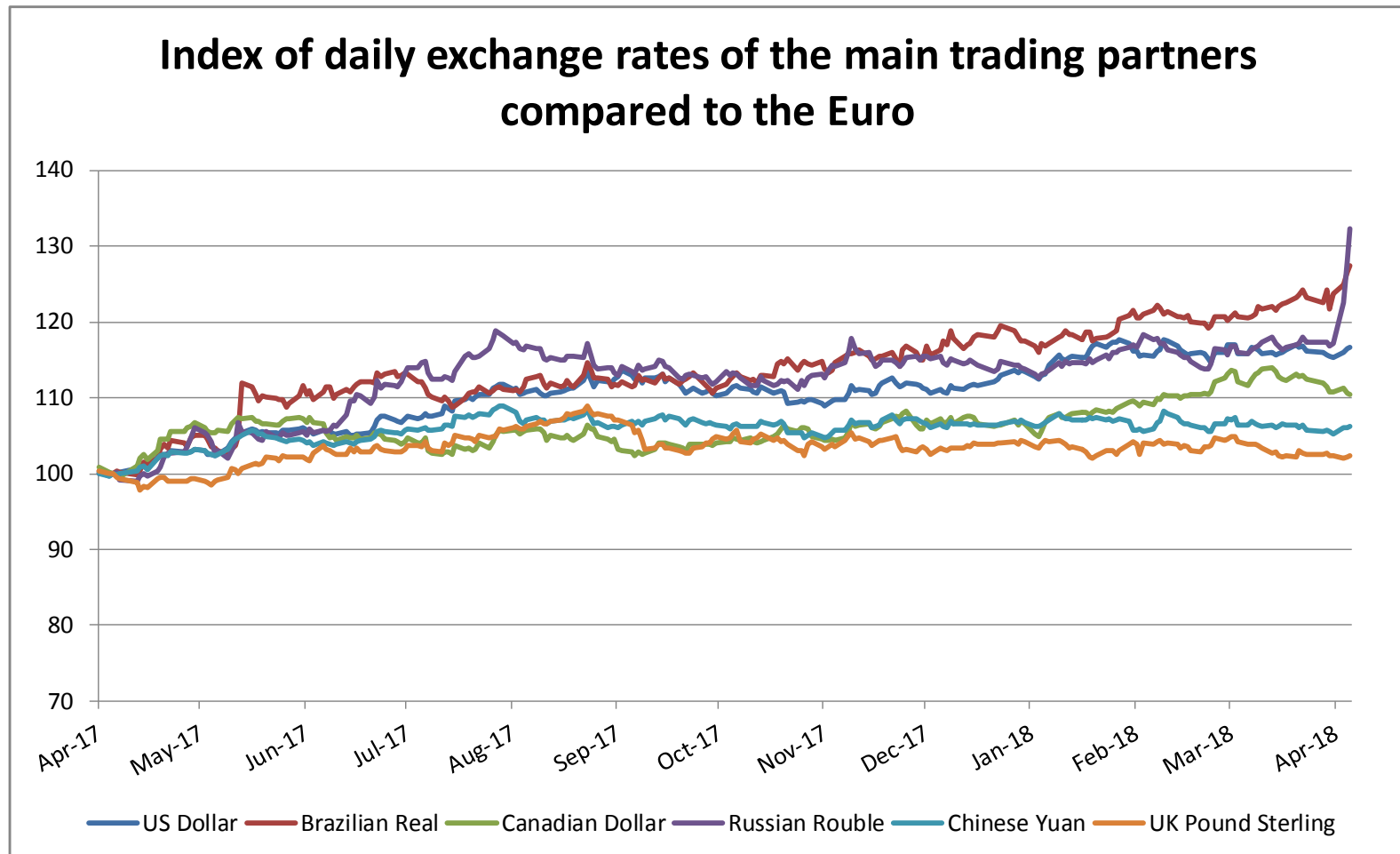


19 April 2018

WORLD BEEF MARKET

EXCHANGE RATE INDEX / Euro

Main Trading Partners



Source : ECB

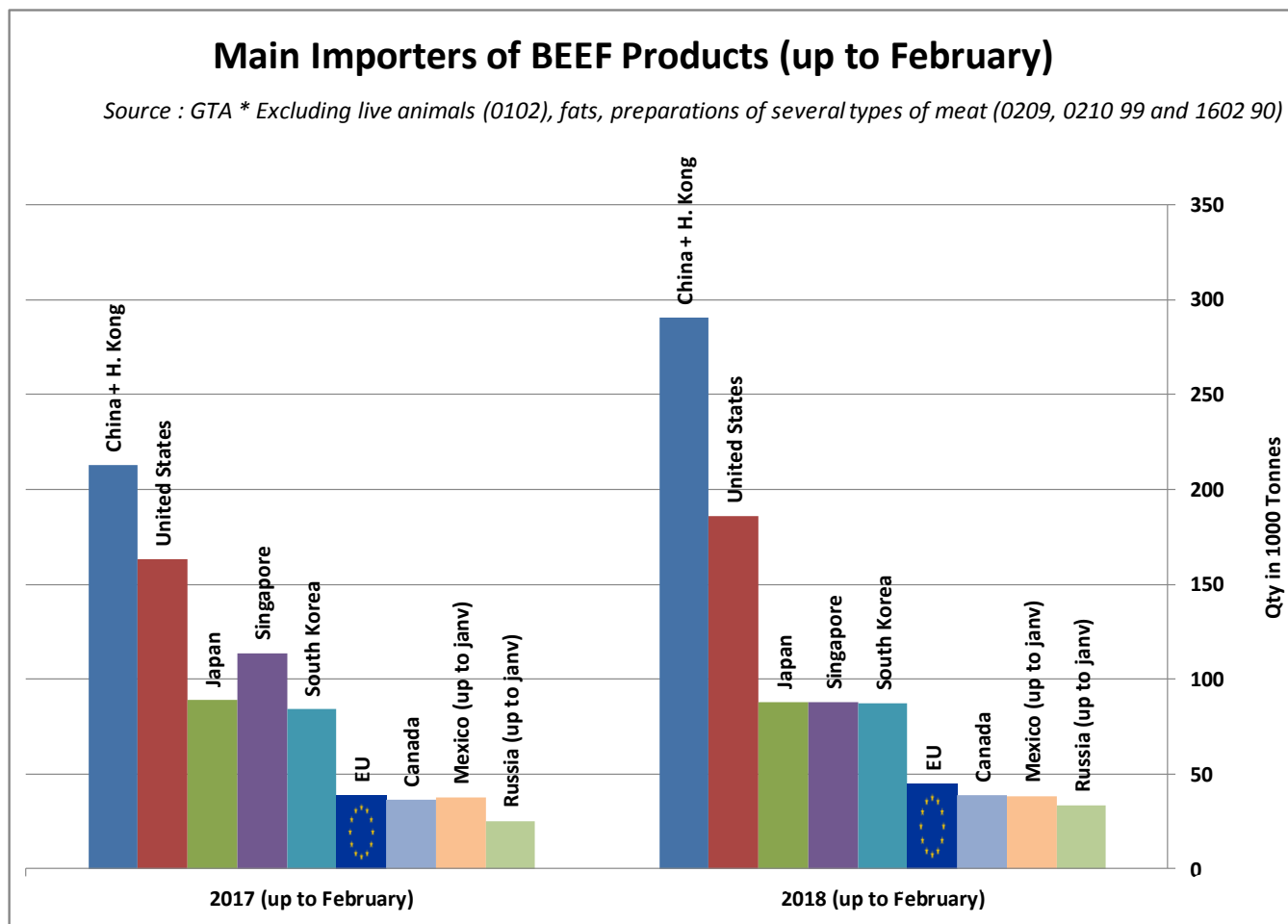
19 April 2018

WORLD BEEF MARKET

E.U. IMPORTS BEEF MAIN IMPORTERS

Source : GTA

* Excluding live animals (0102), fats, preparations of several types of meat (0209, 0210 99 and 1602 90)



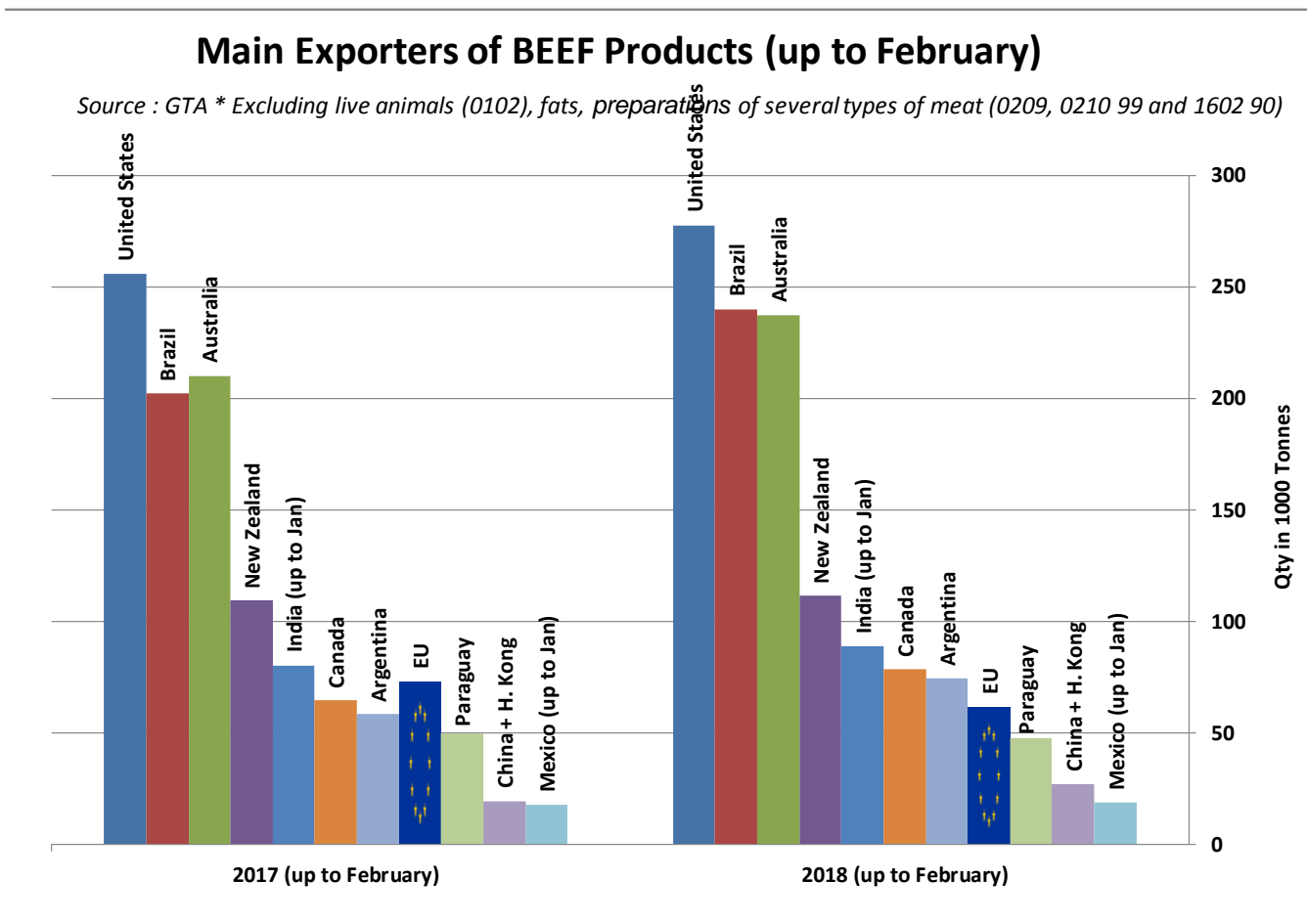
19 April 2018

WORLD BEEF MARKET

E.U. EXPORTS BEEF MAIN EXPORTERS

Source : GTA

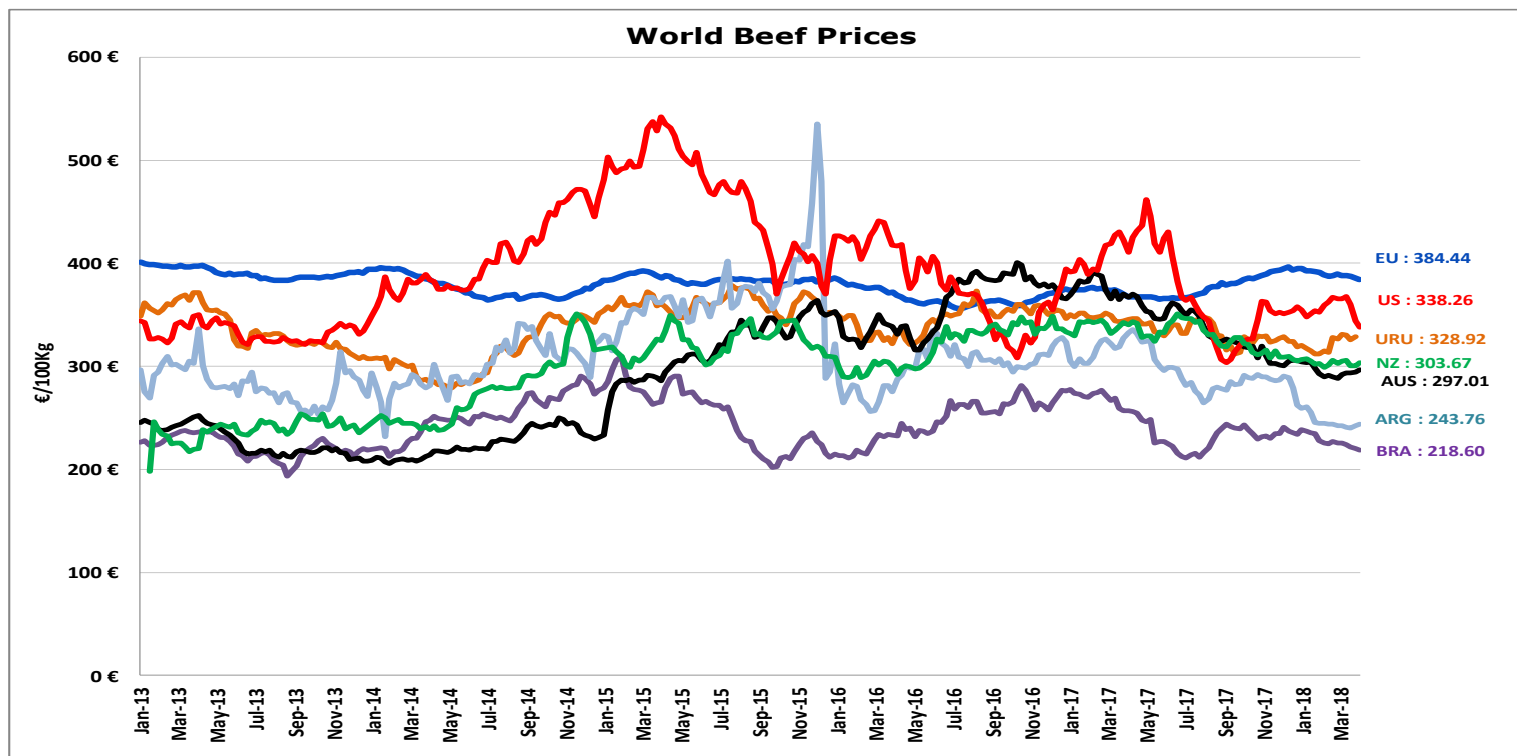
* Excluding live animals (0102), fats, preparations of several types of meat (0209, 0210 99 and 1602 90)



19 April 2018

WORLD BEEF MARKET

STEER PRICES EU, US, AUS, NZ



ECB <http://sdw.ecb.europa.eu/browse.do?node=2018794>
 US <https://www.marketnews.usda.gov/mnp/lis-home>
 AUS <http://statistics.mla.com.au/Report/RunReport/ae59d4ac-74e4-4c56-93bd-982a044d9760>
 UY <http://www.inac.gub.uy/innovaportal/v/11034/10/innova.front/indicadores-y-precios>
 ARG http://www.abc-consorcio.com.ar/Estadisticas/detalle/117/precios_comparativos_del_novillo.html
 BR <http://www.pecuaria.com.br/cotacoes.php>
 NZ http://www.abc-consorcio.com.ar/Estadisticas/detalle/117/precios_comparativos_del_novillo.html

19 April 2018

High Quality Beef Import Quotas

Hilton Quota

Regulation (EU) N° 593/2013

		Quantity allocated (Tons)	2014/2015		2015/2016		2016/2017		2017/2018*	
			Use		Use		Use		Use	
09.4001	Australia	2 250								
09.4004	Argentina	200	9.46	4.73%	12.21	6.11%	12.75	6.38%	9.89	4.95%
09.4450	Argentina	29 500	22 867.03	77.52%	22 350.61	75.76%	23 111.89	78.35%	18 755.04	63.58%
09.4451	Australia	7 150	6 815.93	95.33%	6 749.85	94.40%	4 051.04	56.66%	3 776.04	52.81%
09.4452	Uruguay	6 376	6 280.98	98.51%	6 249.09	98.01%	6 365.55	99.84%	4 762.62	74.70%
09.4453	Brazil	10 000	7 989.89	79.90%	9 289.17	92.89%	8 572.40	85.72%	4 255.08	42.55%
09.4454	New Zealand	1 300	1 299.45	99.96%	1 299.95	100.00%	1 161.63	89.36%	782.62	60.20%
09.4002	Canada/US	11 500	353.46	3.07%	292.16	2.54%	421.40	3.66%	1 768.17	15.38%
09.4455	Paraguay	1 000	12.13	1.21%	915.63	91.56%	982.60	98.26%	800.84	80.08%
Total Beef		66 826	45 618.87	68.27%	47 146.46	70.55%	44 666.51	66.84%	34 900.41	52.23%
Total Buffalo		2 450	9.46	0.39%	12.21	0.50%	12.75	0.52%	9.89	0.40%
Total		69 276	45 628.33	65.86%	47 158.67	68.07%	44 679.26	64.49%	34 910.30	50.39%

* up to 28/02/2018

High Quality Beef Import Quotas

Quota erga omnes

Regulation (EU) No 481/2012

	2013-Q3	2013-Q4	2014-Q1	2014-Q2	TOTAL
Period 2013-2014	10 198 942	10 493 437	10 191 527	10 282 860	41 166 765
Available	12 050 000	12 050 000	12 050 000	12 050 000	48 200 000
Use	84.64%	87.08%	84.58%	85.33%	85.41%

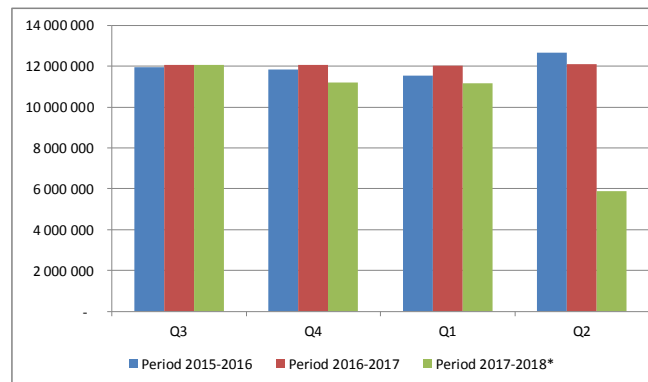
	2014-Q3	2014-Q4	2015-Q1	2015-Q2	TOTAL
Period 2014-2015	11 842 700	11 745 231	11 353 830	12 457 389	47 399 150
Available	12 050 000	12 050 000	12 050 000	12 050 000	48 200 000
Use	98.28%	97.47%	94.22%	103.38%	98.34%
Available after transfer	12 050 000	12 257 300	12 562 069	13 258 240	
	98.28%	95.82%	90.38%	93.96%	

	2015-Q3	2015-Q4	2016-Q1	2016-Q2	TOTAL
Period 2015-2016	11 952 185	11 851 187	11 535 011	12 664 673	48 003 056
Available	12 050 000	12 050 000	12 050 000	12 050 000	48 200 000
Use	99.19%	98.35%	95.73%	105.10%	99.59%
Available after transfer	12 050 000	12 147 815	12 346 627	12 861 617	
	99.19%	97.56%	93.43%	98.47%	

	2016-Q3	2016-Q4	2017-Q1	2017-Q2	TOTAL
Period 2016-2017	12 059 567	12 062 828	12 015 258	12 088 771	48 226 423
Available	12 050 000	12 050 000	12 050 000	12 050 000	48 200 000
Use	100.00%	100.00%	99.71%	100.00%	100.00%
Available after transfer	12 050 000	12 040 433	12 027 606	12 062 348	
	100.00%	100.00%	99.90%	100.00%	

	2017-Q3	2017-Q4	2018-Q1	2018-Q2	TOTAL
Period 2017-2018*	12 051 815	11 195 874	11 160 263	5 879 050	40 287 002
Available	12 050 000	11 161 000	11 250 000	11 250 000	45 711 000
Use	100.00%	100.00%	99.20%	52.26%	88.13%
Available after transfer	12 050 000	11 159 185	11 215 126	11 339 737	
	100.00%	100.00%	99.51%	51.84%	

* Until 12.04.2018



19 April 2018

Forecast Summary

		2016		2017		2018		2019
EU.15 PRODUCTION (1000T)	+ 2.35%	6 966	- 0.76%	6 913	- 0.44%	6 883	- 0.69%	6 835
EU.15 CONSUMPTION (1000T)	- 1.92%	6 559	+ 0.59%	6 598	+ 0.28%	6 617	+ 0.26%	6 634
BALANCE		407		315		266		201
EU.13 PRODUCTION (1000T)	+ 7.14%	832	+ 5.96%	882	+ 4.56%	922	+ 1.20%	933
EU.13 CONSUMPTION (1000T)	- 3.12%	396	+ 2.29%	405	+ 2.31%	415	+ 1.11%	419
BALANCE		436		477		508		514
EU.28 PRODUCTION (1000T)	+ 2.84%	7 798	- 0.04%	7 795	+ 0.13%	7 805	- 0.47%	7 768
EU.28 CONSUMPTION (1000T)	- 1.99%	6 955	+ 0.69%	7 003	+ 0.40%	7 031	+ 0.31%	7 053
BALANCE		843		792		774		715
EU - CARCASS PRICES		2016		2017		2018		2019
ADULT MALE BOVINES (€/100 kg)	- 4.3%	371.4	+ 2.56%	380.9	+ 1.31%	385.9	+ 0.48%	387.7
COWS (€/100 kg)	- 7.9%	268.6	+ 7.25%	288.1	+ 3.83%	299.2	- 0.52%	297.6

Sources : EStat New Cronos, Member States

19 April 2018