



AGRI.E2 - F&V - 2022

WORKING DOCUMENT

EU FRUIT AND VEGETABLES MARKET OBSERVATORY
PIP FRUIT subgroup



The apple market in the EU:
Vol. 2: prices

----- 26 September 2022 -----

Le marché de la pomme dans l'UE:
Vol. 2: Prix

Contact point:

European Commission - DG Agri E2

Exclusion of liability: this document of the European Commission aims to contribute to the analysis of the apple market situation in the EU.

The Commission accepts no responsibility for the information contained herein.

Data sources: data come mainly from experts and official statistics; they may have been supplemented with data from other types of sources.

Their reproduction or use is permitted with mention their source.

Clause de non-responsabilité: le présent document de la Commission européenne a pour objet de contribuer à l'analyse de la situation du marché de la pomme dans l'UE. La Commission n'assume aucune responsabilité quant aux informations qu'il contient.

Sources : les données proviennent dans l'essentiel des experts et des statistiques officielles; ils peuvent avoir été complétées avec d'autres sources.

Leur reproduction ou leur utilisation sont autorisées à condition de mentionner leur source.

INDEX OF GRAPHS AND TABLES

4. PRICES

- TABLE 4.1** : PRODUCER PRICES OF APPLES
- GRAPH 4.1** : PRODUCER PRICES OF APPLES - ITALY
- GRAPH 4.2** : PRODUCER PRICES OF APPLES - FRANCE
- GRAPH 4.3** : PRODUCER PRICES OF APPLES - GERMANY
- GRAPH 4.4** : PRODUCER PRICES OF APPLES- SPAIN
- GRAPH 4.5** : PRODUCER PRICES OF APPLES - HUNGARY
- GRAPH 4.6** : PRODUCER PRICES OF APPLES - POLAND
- TABLE 4.2** : PRODUCER PRICES OF APPLES IN MAIN EUROPEAN MARKETS - Gala
- GRAPH 4.7** : PRODUCER PRICES OF APPLES IN MAIN EUROPEAN MARKETS - Gala
- TABLE 4.3** : PRODUCER PRICES OF APPLES IN MAIN EUROPEAN MARKETS - Golden Delicious
- GRAPH 4.8** : PRODUCER PRICES OF APPLES IN MAIN EUROPEAN MARKETS - Golden Delicious
- TABLE 4.4** : PRODUCER PRICES OF APPLES IN MAIN EUROPEAN MARKETS - Idared
- GRAPH 4.9** : PRODUCER PRICES OF APPLES IN MAIN EUROPEAN MARKETS - Idared
- TABLE 4.5** : PRODUCER PRICES OF APPLES IN MAIN EUROPEAN MARKETS - Red Delicious
- GRAPH 4.10** : PRODUCER PRICES OF APPLES IN MAIN EUROPEAN MARKETS - Red Delicious

Table 4.1 : PRODUCER PRICES OF APPLES (€/100kg)

MONTH	SPAIN													FRANCE																	
	2007/08	2008/09	2009/10	2010/11	2011/12	2012/13	2013/14	2014/15	2015/16	2016/17	2017/18	2018/19	2019/20	2020/21	2021/22	2007/08	2008/09	2009/10	2010/11	2011/12	2012/13	2013/14	2014/15	2015/16	2016/17	2017/18	2018/19	2019/20	2020/21	2021/22	
Aug	72.40	57.09	46.22	57.30	58.11	59.77	86.88	49.62	59.02	57.79	53.55	76.06	76.93	89.15	85.08	66.42	73.48	65.32	98.00	98.25	99.05	121.44	71.00	85.25	86.00	107.22	124.22	115.72	113.82	149.49	
Sep	61.81	58.58	46.41	53.46	55.75	64.21	73.32	54.32	50.88	55.99	75.52	90.95	82.16	87.61	82.13	61.52	66.73	51.29	69.31	67.44	95.99	85.64	68.24	78.34	85.61	95.51	111.08	104.17	93.42	105.51	133.81
Oct	59.54	54.66	47.50	57.56	61.54	69.67	70.48	55.82	59.82	55.28	79.30	92.94	91.21	97.64	84.75	60.91	66.35	53.86	70.73	69.32	98.61	81.05	72.09	74.80	80.76	94.12	90.32	85.19	122.17	126.77	
Nov	56.03	56.21	47.51	59.18	61.54	68.91	69.49	54.32	57.12	53.91	77.11	81.80	86.07	93.19	80.04	60.11	66.48	56.19	69.92	69.36	99.38	77.48	72.56	75.53	82.03	90.15	89.25	84.73	121.38	123.01	
Dec	53.85	57.64	50.35	57.59	59.35	69.71	70.02	57.36	53.83	53.92	77.01	77.19	79.45	90.15	74.67	64.62	67.23	60.32	71.03	69.68	100.62	78.15	70.68	76.33	81.38	93.00	85.70	86.63	123.17	117.06	
Jan	55.08	55.13	46.92	57.50	60.38	73.25	68.74	57.23	54.37	54.80	75.12	72.09	72.72	82.55	74.66	72.79	68.07	62.43	72.47	70.86	100.83	76.11	72.18	70.75	78.80	95.12	87.20	88.73	126.29	118.17	
Feb	54.40	54.22	50.88	56.53	61.01	76.51	64.84	52.80	52.89	54.93	76.54	70.84	68.16	84.77	75.90	72.79	68.07	62.43	72.47	70.86	100.83	76.11	72.18	70.75	78.80	95.12	87.20	88.73	126.29	118.17	
Mar	54.87	52.86	52.42	56.82	62.42	84.85	64.30	53.03	53.91	54.29	76.10	68.23	66.49	83.06	73.66	75.12	67.48	64.79	75.36	72.42	102.85	78.80	74.56	71.54	78.61	97.36	87.94	95.10	122.50	117.09	
Apr	54.35	52.29	47.95	54.01	61.09	88.03	63.51	53.47	52.75	53.32	80.44	70.28	67.52	79.51	75.47	78.89	69.96	64.37	78.54	73.46	106.42	82.21	74.92	78.80	80.63	101.03	88.20	103.00	122.36	113.71	
May	54.93	60.91	56.14	52.87	58.58	89.93	62.25	56.27	54.99	53.54	87.87	78.20	79.83	84.89	80.72	80.00	64.45	59.54	65.62	77.63	111.84	73.04	75.22	83.18	89.23	110.18	92.87	101.13	126.50	112.59	
Jun	59.44	52.79	48.89	51.46	58.12	90.07	61.46	61.12	55.70	53.60	96.89	76.64	86.81	85.03	81.52	83.38	59.50	57.62	67.08	73.92	106.78	72.00	75.75	70.13	115.43	96.27	102.86	126.27	110.78		
Jul	58.94	43.97	49.75	52.25	57.24	93.63	62.25	55.55	53.58	88.53	77.72	82.45	85.35	80.33	104.25	58.00	56.00	69.75	75.00		68.08			70.50	118.25	110.00	83.00	126.88	114.60		

MONTH	ITALY													GERMANY																
	2007/08	2008/09	2009/10	2010/11	2011/12	2012/13	2013/14	2014/15	2015/16	2016/17	2017/18	2018/19	2019/20	2020/21	2021/22	2007/08	2008/09	2009/10	2010/11	2011/12	2012/13	2013/14	2014/15	2015/16	2016/17	2017/18	2018/19	2019/20	2020/21	2021/22
Aug			59.50	61.50	65.00	78.00	88.00	68.68	60.18	65.75	70.67	72.50	61.90	77.54	79.72	41.23	55.18	34.54	36.43	44.75	49.56	55.87	48.40	41.42	31.89	54.33	86.98	41.58	79.19	62.05
Sep	68.53	82.71	58.23	70.18	63.47	80.34	89.25	64.29	62.08	65.94	74.28	68.21	66.10	77.50	83.17	36.05	47.45	28.52	44.10	38.92	55.49	60.50	32.67	43.74	39.37	73.28	69.76	52.32	79.09	64.75
Oct	71.00	80.19	56.42	73.19	65.98	83.42	89.02	52.05	65.10	65.95	86.24	69.00	67.65	79.25	82.58	34.57	41.19	25.82	46.25	37.79	52.95	61.61	29.56	42.47	40.23	84.22	55.25	59.53	78.13	66.85
Nov	71.00	76.33	55.11	74.67	67.27	83.61	86.14	52.12	65.58	68.47	86.97	68.52	69.79	78.97	84.58	34.66	36.75	25.39	45.49	37.16	50.87	56.88	23.27	37.85	38.39	90.25	51.00	59.35	78.99	67.38
Dec	71.00	72.71	54.17	74.69	65.51	83.49	84.57	52.39	65.58	68.62	87.25	69.23	70.22	79.46	82.65	37.17	37.51	27.14	47.98	37.62	50.39	57.89	22.50	38.14	39.51	90.90	50.64	62.01	73.35	68.94
Jan	73.17	69.75	58.14	74.67	66.95	83.46	82.02	52.71	65.58	68.53	87.70	69.89	71.21	81.09	81.71	40.48	37.17	31.32	48.03	37.85	51.71	56.95	24.97	36.43	40.95	89.32	49.31	61.03	71.40	64.45
Feb	73.89	71.29	57.96	74.73	67.12	86.37	80.43	53.58	64.86	67.13	91.37	69.53	71.86	81.61	81.12	42.38	37.13	32.75	49.40	37.24	54.70	57.17	26.28	39.24	39.00	88.72	48.87	58.62	76.73	64.27
Mar	75.30	71.11	58.30	74.51	66.43	87.69	78.15	55.67	63.81	65.24	90.27	69.82	73.24	81.61	79.83	44.09	39.03	34.70	52.88	37.30	54.48	55.71	27.56	35.99	39.98	94.62	43.15	61.05	73.67	63.31
Apr	79.36	70.71	59.29	73.85	66.51	88.36	76.86	55.24	62.81	65.05	92.84	69.25	79.03	82.00	79.31	49.23	37.66	35.84	52.29	36.82	59.74	54.75	29.00	38.08	39.90	94.16	48.63	66.92	75.56	62.22
May	87.33	71.52	60.13	74.20	69.86	92.50	75.25	59.53	59.29	68.38	99.37	67.19	83.50	82.92	78.90	54.19	35.09	37.59	47.93	37.84	60.07	50.54	29.82	37.61	40.20	98.71	49.58	72.15	76.85	57.10
Jun	89.60	70.92	61.62	74.39	74.58	93.78	73.22	67.08	60.37	70.79	102.68	65.03	86.97	82.13	78.09	55.74	35.03	35.59	53.76	38.70	61.19	51.04	33.14	39.70	40.96	104.31	49.47	69.09	78.99	55.31
Jul	90.00	64.50	57.17	71.73	78.75	97.50	68.68	69.07	61.52	70.90	104.50	55.87	84.57	78.46	75.27	60.33	37.05	37.99	49.94	45.89	60.09	48.40	37.84	31.26	43.44	108.84	48.07	76.07	80.58	59.28

Source: AMIS II WEB (date of last extraction 07.09.2022 JLA) - prices on the representative markets communicated by Member States

NB: Prices in different Member States are not always comparable as MS may have chosen different methodology to register prices pursuant to Regulation (EC) No 877/2004 - since 2011 new regulation (EU) 543/2011

Table 4.1 : PRODUCER PRICES OF APPLES (€/100kg) (suite)

	BELGIUM													NETHERLANDS																
	2007/08	2008/09	2009/10	2010/11	2011/12	2012/13	2013/14	2014/15	2015/16	2016/17	2017/18	2018/19	2019/20	2020/21	2021/22	2007/08	2008/09	2009/10	2010/11	2011/12	2012/13	2013/14	2014/15	2015/16	2016/17	2017/18	2018/19	2019/20	2020/21	2021/22
Aug	81,71	120,94	94,20	85,01	80,03	95,68	78,55	54,70	39,96	39,50	45,87	75,78	51,37	81,74	62,21	41,84	81,17	40,48	71,34	53,22	75,62	127,24	59,06	78,18	56,15	77,35	65,06	65,44	119,09	116,43
Sep	62,92	70,70	70,30	67,97	59,34	86,92	61,21	47,23	51,10	48,23	58,42	48,53	53,65	79,50	67,07	40,57	54,11	33,27	56,27	46,31	68,28	66,17	47,53	50,55	44,55	75,43	43,49	49,60	75,12	74,62
Oct	43,48	58,79	45,79	46,22	48,88	72,76	49,19	34,19	38,79	36,03	68,77	44,33	48,19	60,31	50,62	44,64	43,79	32,98	51,55	37,91	56,31	49,98	32,49	36,53	32,86	64,23	33,14	51,18	62,79	61,30
Nov	47,43	57,77	45,06	46,71	53,57	69,92	51,52	31,14	39,60	39,31	75,28	41,43	49,01	63,74	43,23	41,85	46,43	34,24	55,14	39,06	55,15	46,35	31,04	36,40	37,84	68,21	42,32	60,77	52,75	52,77
Dec	53,16	54,02	56,19	51,21	47,35	74,42	45,70	32,94	38,40	38,22	70,88	42,73	46,58	56,98	42,11	42,75	47,25	31,49	41,07	40,38	47,45	47,10	33,30	30,42	30,77	68,44	36,92	48,06	65,26	54,86
Jan	61,60	56,71	52,28	52,66	55,79	62,45	52,41	36,65	45,53	44,76	75,57	44,30	54,88	60,46	47,07	47,72	39,37	38,03	47,54	38,65	62,99	53,52	31,60	34,84	37,70	76,68	42,49	41,23	50,20	56,86
Feb	70,83	61,67	54,09	56,98	48,62	55,99	49,40	39,89	41,23	36,49	83,07	37,26	54,14	68,66	42,75	44,19	35,68	39,75	59,86	37,41	59,88	49,98	31,22	34,59	40,87	81,42	38,67	45,86	82,92	57,66
Mar	74,06	61,71	45,81	59,80	56,91	63,39	45,73	34,29	38,57	46,50	83,62	43,64	49,63	63,92	39,23	47,14	40,93	36,22	58,41	44,13	195,29	47,68	32,19	37,46	47,90	99,34	41,41	41,93	86,25	59,78
Apr	95,74	67,92	69,56	73,57	72,46	60,13	51,71	39,61	28,39	45,12	95,04	35,84	37,20	54,42	42,20	57,28	40,47	55,40	59,97	46,01	74,52	47,21	32,48	34,89	47,17	80,23	48,35	45,36	95,73	55,70
May	94,14	90,77	77,37	86,76	59,88	63,91	60,75	30,50	32,65	49,92	93,93	45,36	46,50	50,23	34,42	75,50	41,24	36,16	58,76	50,16	94,56	51,73	38,62	36,18	49,19	86,90	55,27	65,50	92,01	57,88
Jun	97,95	74,04	66,98	71,79	75,40	48,45	45,65	32,81	26,73	48,60	100,07	54,79	66,64	59,49	32,97	66,31	35,19	32,37	61,43	53,22	74,50	43,58	44,78	46,22	54,88	113,59	63,16	73,51	97,16	56,77
Jul	118,24	78,34	76,94	97,34	77,34	75,30	54,70	37,94	24,28	53,06	104,92	28,89	58,98	55,06	32,86	87,58	28,90	39,09	55,90	67,70	123,25	59,06	43,63	63,14	72,89	134,54	70,21	87,34	109,22	59,36

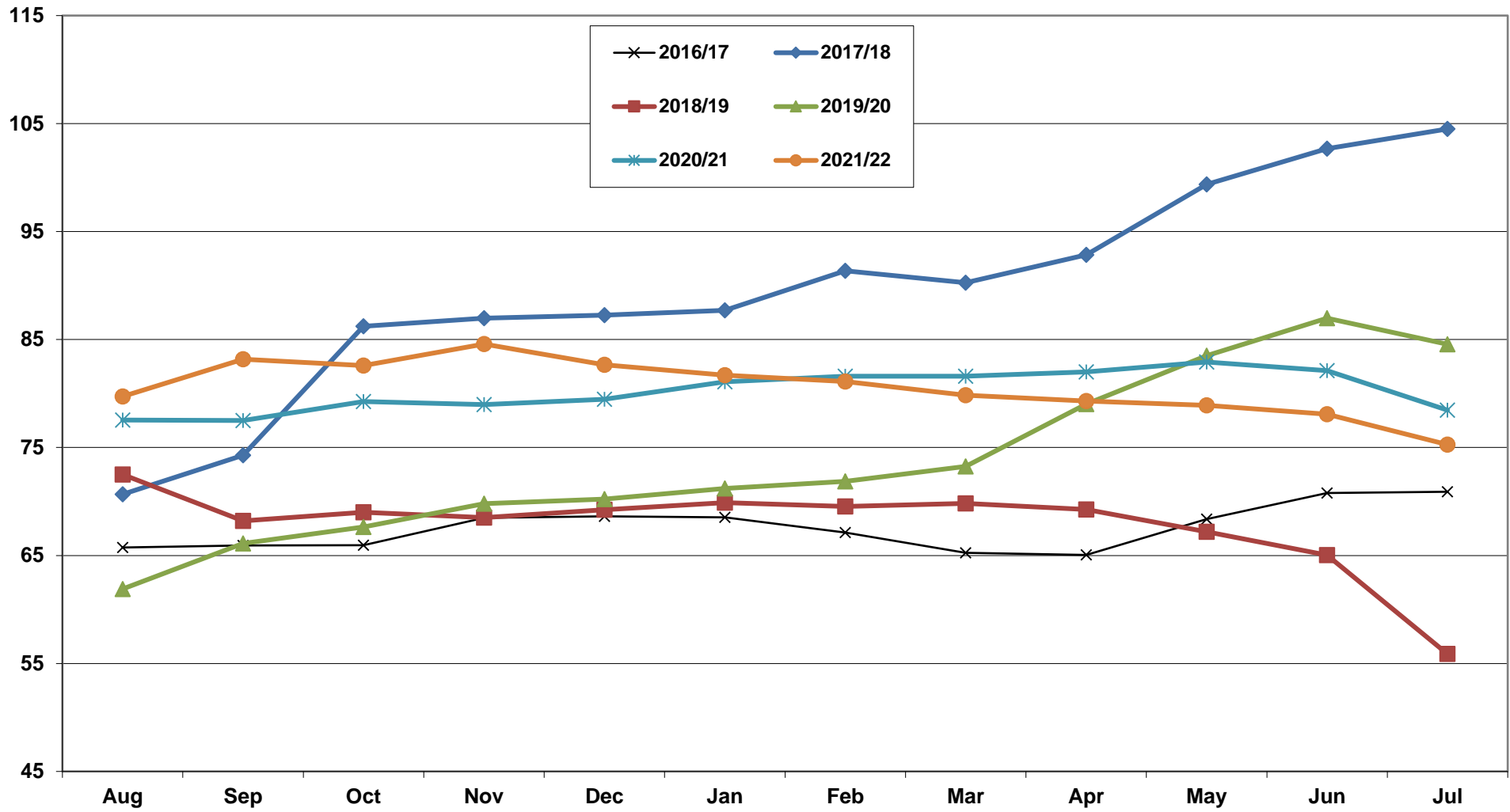
	HUNGARY													POLAND																
	2007/08	2008/09	2009/10	2010/11	2011/12	2012/13	2013/14	2014/15	2015/16	2016/17	2017/18	2018/19	2019/20	2020/21	2021/22	2007/08	2008/09	2009/10	2010/11	2011/12	2012/13	2013/14	2014/15	2015/16	2016/17	2017/18	2018/19	2019/20	2020/21	2021/22
Aug	63,57	56,94	35,87	56,73	60,01						51,34	50,88	90,95	64,54	18,51		27,82	24,34	29,40			24,15	48,12	25,87	30,46	30,40	13,95	79,21	21,34	
Sep	60,46	42,70	28,95	41,96	49,61	44,81	36,79		50,29	40,86	50,80	48,00	47,78	84,57	63,75	59,25	25,63	21,16	39,51	23,65	27,27	24,50	33,11	25,13	38,03	19,49	37,37	41,39	34,80	
Oct	62,25	35,85	25,85	48,70	49,14	46,28		34,87	48,37	43,85	51,63	43,46	48,11	89,89	64,12	48,48	21,20	19,04	38,64	24,12	24,03	30,97	19,65	23,18	23,35	39,49	13,56	39,36	37,51	26,59
Nov	62,81	33,05	28,03	48,41	47,92	47,07	38,21	34,55	47,96	46,01	53,53	44,08	48,09	80,02	63,42	47,31	19,68	19,02	38,29	24,69	25,37	33,74	14,21	22,80	19,47	40,47	12,13	37,62	38,40	23,43
Dec	64,57	34,35	30,57	50,47	45,24	48,07	37,63	33,98		55,38	43,09	52,62	64,48	64,80	50,61	18,27	16,30	41,57	28,32	27,70	15,33	22,35	23,51	38,10	10,44	35,03	40,27	23,13		
Jan	67,74	35,22	33,53	52,85	44,81	47,46	36,87	33,87		62,11	43,55	55,59	62,77	66,21	53,79	18,40	24,39	44,17	31,67	24,85	30,77	19,70	21,07	22,52	37,08	13,92	40,12	39,52	30,92	
Feb	70,44	34,43	34,64	55,73	49,25	48,24	38,22	34,70		61,89	46,07	55,87	73,43	66,24	58,83	16,56	23,33	46,93	37,76	26,76	33,59	19,57	20,31	25,33	40,73	15,58	44,32	38,26	33,03	
Mar	74,97	35,40	38,07	58,04	52,38	47,61	40,19	36,62		63,36	48,74	56,16	70,69	66,27	64,11	15,75	25,27	51,88	40,97	24,54	35,65	20,05	19,13	25,50	40,91	18,75	49,67	45,02	39,96	
Apr	82,28	40,60	40,27	62,81	51,61	46,76	46,26	43,49		65,69	47,76	54,66	73,06	70,22	67,34	22,90	22,31	62,16	40,98	34,73	26,83	27,57	17,73	26,19	43,70	9,85	57,41	49,19	41,26	
May	95,99	54,12	42,23	73,33	55,50	66,18	49,07	64,48			48,34	72,10	65,52	70,54	77,78	36,98	21,84	68,34	40,74	46,07	28,67	37,88	18,15	34,70	46,24	10,37	70,89	41,53	42,30	
Jun	57,58	47,54	75,79	53,17	63,57	48,37					49,05		76,33	70,88	79,66	39,34	21,94	65,18	51,46	47,21	31,18	46,85	17,46	30,45	39,05	44,37	109,14	39,01	45,22	
Jul	48,06	54,52									47,53				47,43	24,33	62,49	54,24	42,79	24,15	46,02	18,65	31,71	36,27	11,87	117,60	12,95	43,84		

	CZECHIA														
	2007/08	2008/09	2009/10	2010/11	2011/12	2012/13	2013/14	2014/15	2015/16	2016/17	2017/18	2018/19	2019/20	2020/21	2021/22
Aug				36,82	47,56	48,64		54,83	52,54	46,21	59,03	54,39	43,89	83,60	69,25
Sep	54,54	53,04	39,06	48,05	50,14	51,84	52,75		49,43	50,58	64,06	57,84	53,07	81,09	66,37
Oct	51,70	47,87	37,87	50,89	50,03	50,95	50,85	42,27	48,12	49,31	66,40	51,59	62,31	76,03	64,49
Nov	54,23	45,78	37,61	53,27	48,66	48,69	48,83	41,90	47,14	49,58	69,73	49,36	63,10	73,32	62,91
Dec	55,16	42,27	36,74	51,23	48,42	48,57	48,14	41,13	46,94	49,38	69,75	49,41	65,53	72,58	61,22
Jan	55,17	35,29	35,97	53,30	46,82	48,32	48,21	40,02	47,40	50,80	69,38	49,75	65,67	68,42	60,67
Feb	57,91	35,00	37,54	56,79	47,13	45,31	48,97	38,47	46,84	50,48	71,66	49,86	69,47	64,21	60,35
Mar	59,28	38,10	37,89	58,16	49,41	44,98	50,32	39,18	46,70	50,18	74,20	50,72	67,23	61,11	61,38
Apr	62,45	39,64	39,54	58,56	48,03	48,44	50,95	40,62	47,34	52,08	74,37	47,26	66,39	61,16	63,81
May	65,18	42,15	39,68	55,54	47,99	50,94	51,13	42,58	47,68	55,20	73,58	46,67	67,22	62,66	64,28
Jun	62,61	46,86	41,69	52,72	49,29	47,58	54,60	45,65	48,13	53,16	71,12	47,58	85,15	65,15	64,64
Jul	46,64	45,79			45,44		54,83	46,78	48,26	49,94	42,87	102,99	66,80		69,35

Source: AMIS II WEB (date of last extraction 07.09.2022 JLA) - prices on the representative markets communicated by Member States
 NB: Prices in different Member States are not always comparable as MS may have chosen different methodology to register prices pursuant to Regulation (EC) No 877/2004 - since 2011 new regulation (EU) 543/2011

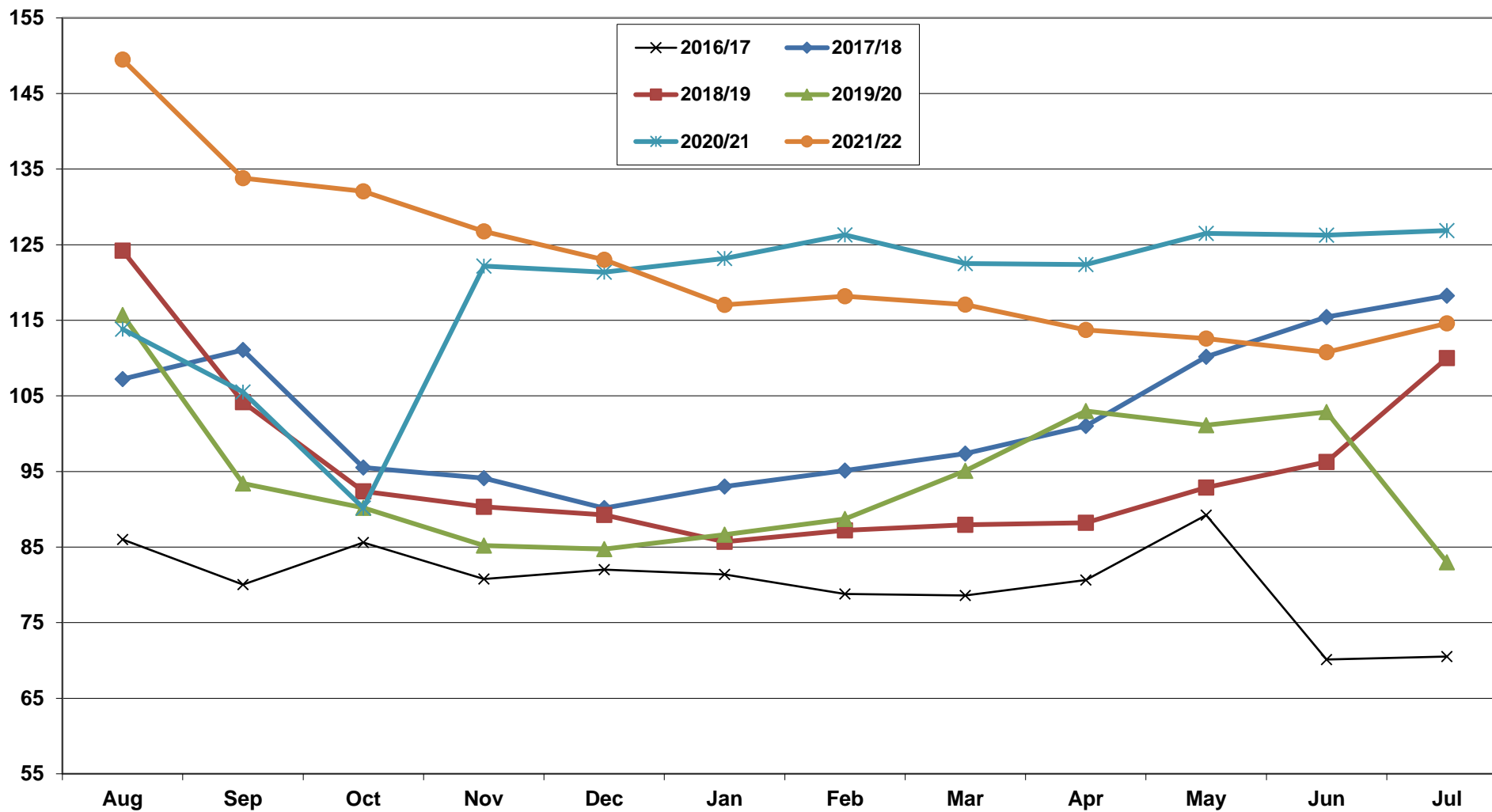
Graph 4.1

PRODUCER PRICES OF APPLES - ITALY (€/100 kg)



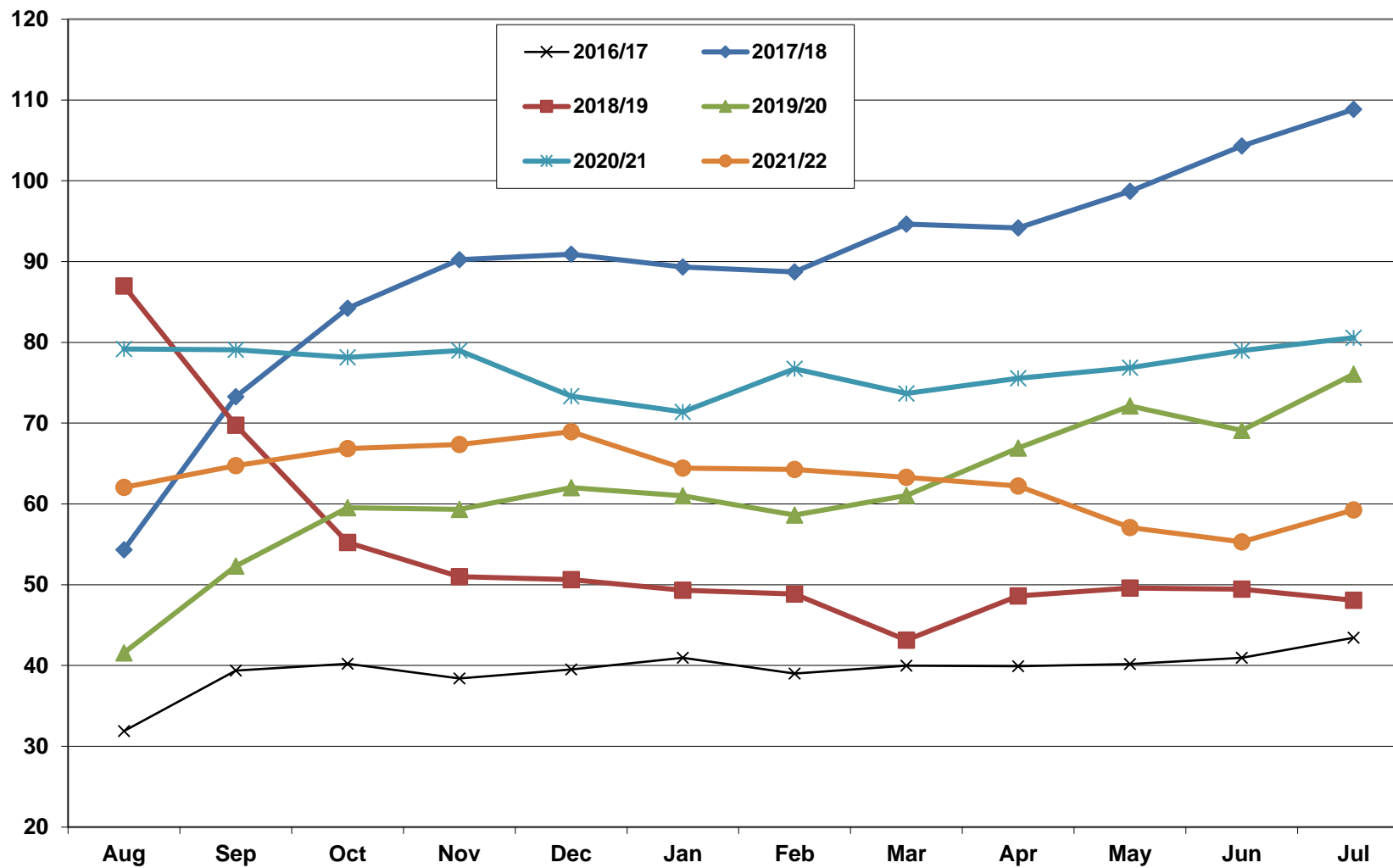
Graph 4.2

PRODUCER PRICES OF APPLES - FRANCE (€/100 kg)



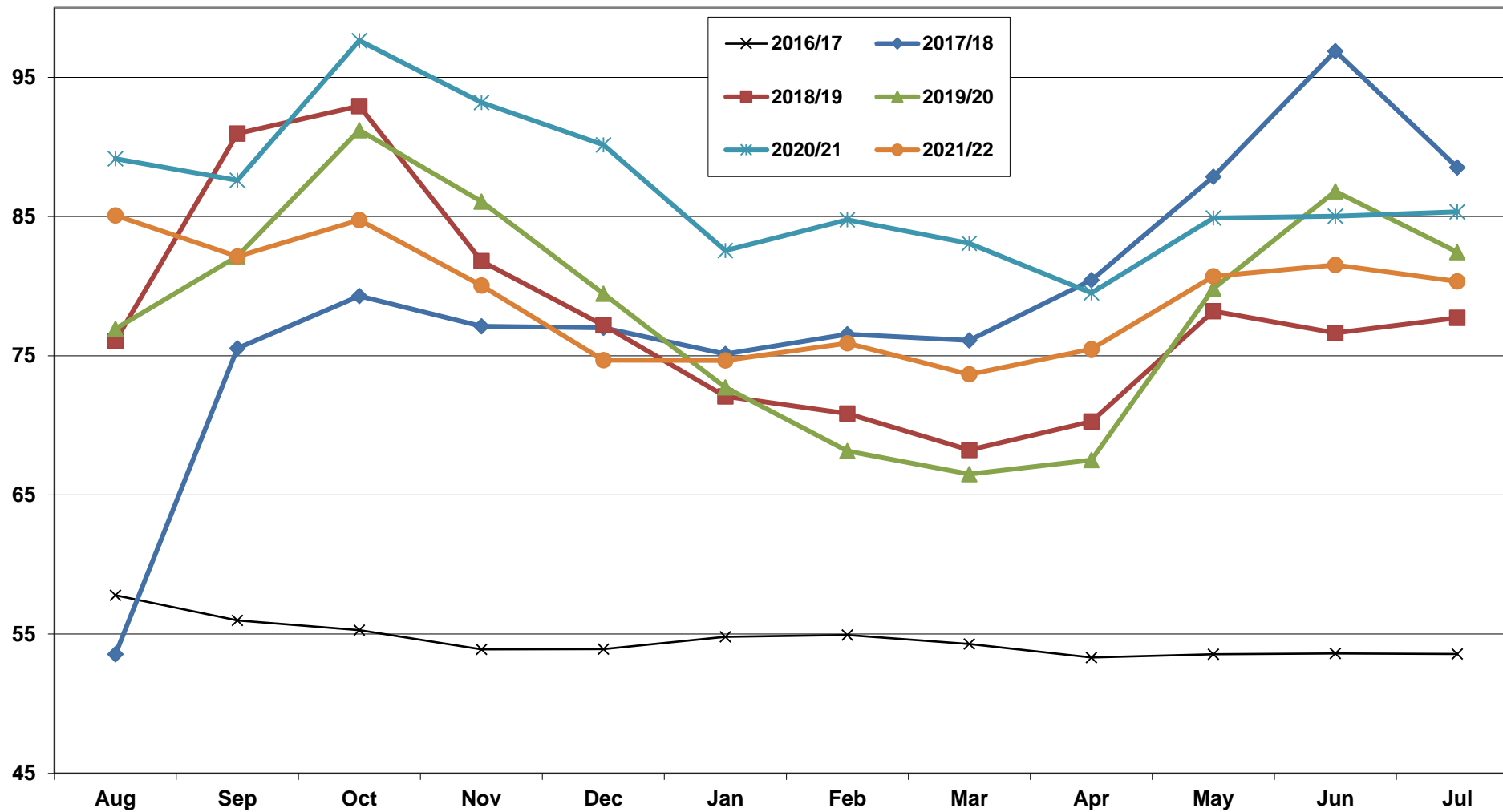
Graph 4.3

PRODUCER PRICES OF APPLES - GERMANY (€/100 kg)



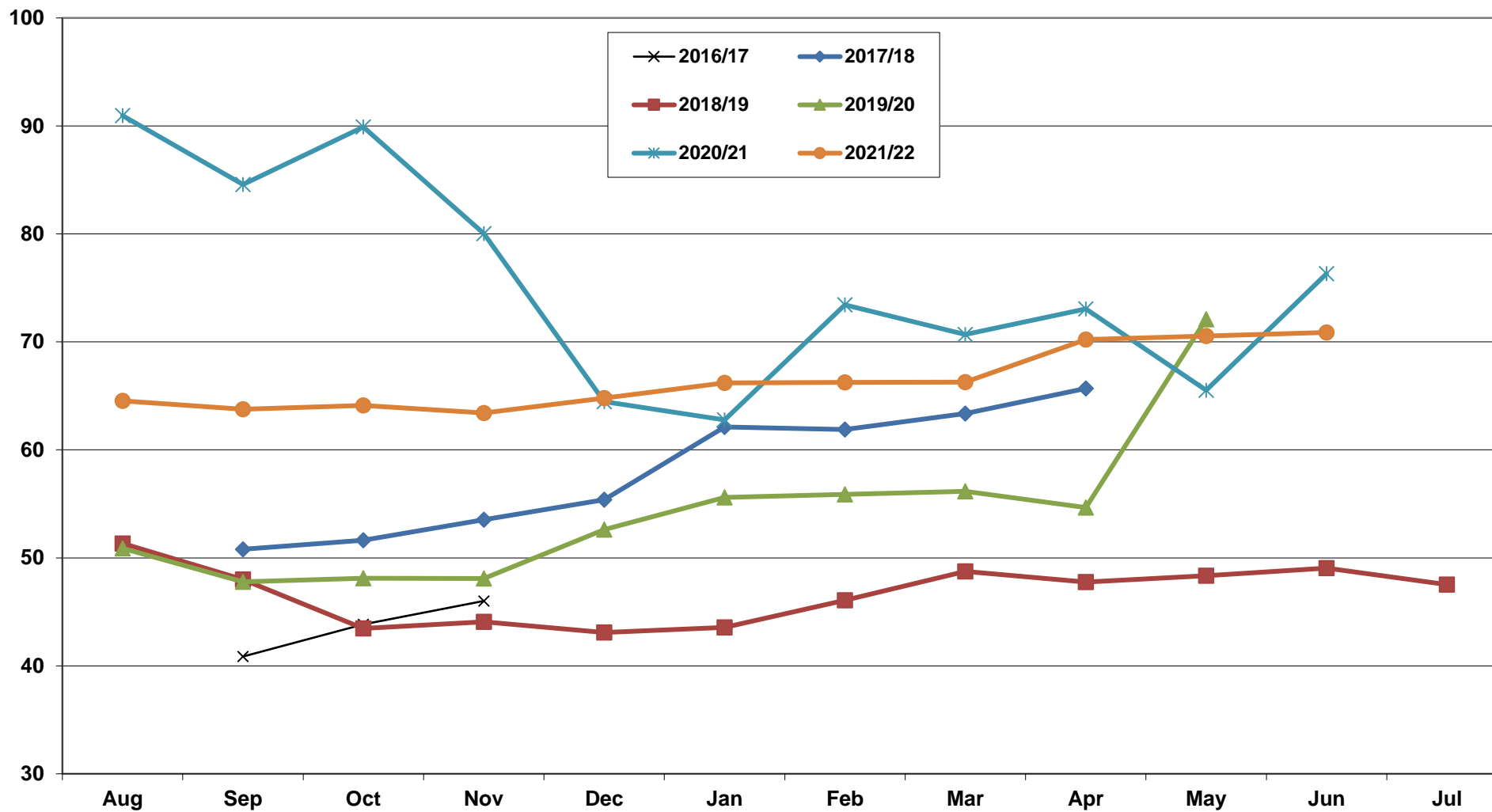
Graph 4.4

PRODUCER PRICES OF APPLES - SPAIN (€/100 kg)



Graph 4.5

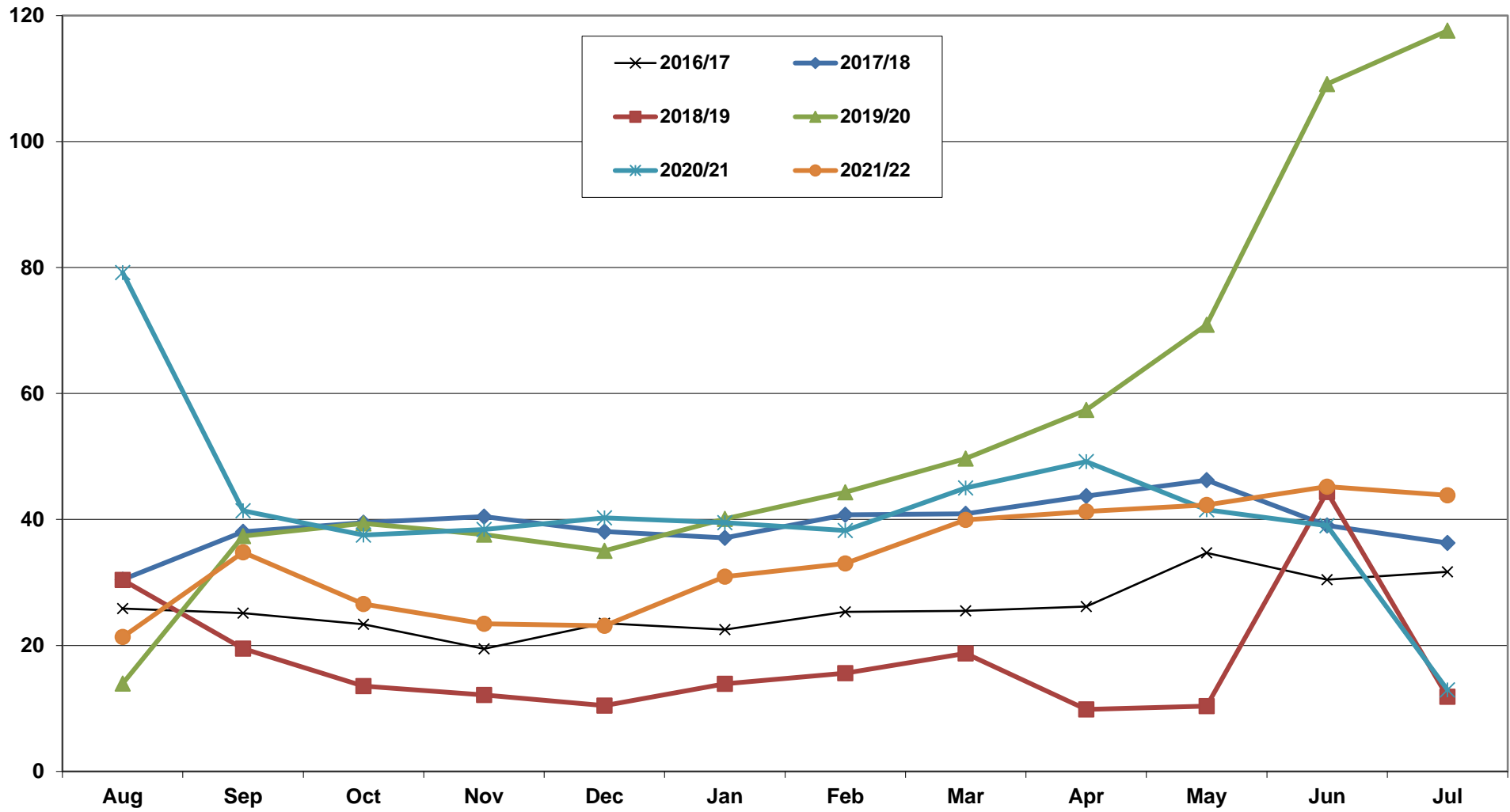
PRODUCER PRICES OF APPLES - HUNGARY (€/100 kg)



Source: AMIS

Graph 4.6

PRODUCER PRICES OF APPLES - POLAND (€/100 kg)



Source: AMIS

Table 4.2: PRODUCER PRICES OF APPLES IN MAIN EUROPEAN MARKETS - GALA CLASS I (€/100 kg)

(pursuant to the Regulation in force: before 09/2011 Regulation (EU) 877/2004 - since 09/2011 Commission Implementing Regulation (EU) 543/2011)

2021-2022	Jul. 2021	Aug. 2021	Sep. 2021	Oct. 2021	Nov. 2021	Dec. 2021	Jan. 2022	Feb. 2022	Mar. 2022	Apr. 2022	May. 2022	Jun. 2022	campaign
AT	111,61	112,85	98,17	97,05	116,86	119,47	122,08	114,64	109,82	109,35	103,89	99,56	109,61
BE (Flanders)		48,40	47,48	43,51	41,43	42,14	41,75	35,28	43,89	48,46	41,01	70,00	45,76
DE	82,55		79,23	69,80	67,13	69,16	68,53	67,81	63,73	69,00	66,98	58,51	69,31
ES		83,65	71,66	67,76	67,37	62,72	62,23	62,40	61,10	60,61	71,27	65,38	66,92
ES (Lleida)													
FR		145,53	125,44	114,06	112,68	108,77	108,74	112,14	117,84	123,12	124,97	125,00	119,85
FR (Sud-Ouest)													
FR (Val de Loire)													
HU (Budapest)		65,23	65,04	69,88	65,02	64,31	66,41	67,11	63,60	67,28			65,99
IT (Bolzano)		89,00	89,00	89,00	89,00	82,26	78,00	78,00	78,00	78,00	78,00		82,83
NL	120,00	116,65	91,32										109,32
PL (Grojecko-Warecki)	13,25				29,82								21,54
PL	13,25	24,28	24,17	22,65	26,86	23,29	35,61	38,81	47,70	48,77	51,48	55,22	34,34
PT		107,35	91,40	81,65	82,07	76,35	76,61	81,64	76,68	74,63	77,00	81,00	82,40

Source: AMIS - extraction 07/09/2022

2020-2021	Jul. 2020	Aug. 2020	Sep. 2020	Oct. 2020	Nov. 2020	Dec. 2020	Jan. 2021	Feb. 2021	Mar. 2021	Apr. 2021	May. 2021	Jun. 2021	campaign
AT (Gleisdorf)	91,58	88,45	90,84	88,74	84,90	84,42	97,77	97,94	104,52	99,75	98,13	100,84	93,99
BE (Sint Truiden)													
DE (Niedersachsen)	74,96		72,96	69,60	70,21	70,35	74,49	73,78	70,35	74,36	77,30	84,79	73,92
ES							76,53	76,72	73,81	73,36	72,92		
ES (Lleida)													
FR (Rhône-Méditerranée)		115,75	98,73	95,15			110,94	112,00	118,24	129,43	135,76	137,00	117,00
FR (Sud-Ouest)													
FR (Val de Loire)		89,75	84,47	83,00									85,74
HU (Budapest)		88,20	84,04	88,87	78,31	65,64	64,47	76,93	74,62	73,00			77,12
IT (Bolzano)		91,95	90,00	83,65	83,00	83,00	84,81	89,00	89,00	89,00	89,00		87,24
NL (Geldermalsen)													
PL (Grojecko-Warecki)			29,20		29,03	30,07	28,78	27,40	22,26	30,42	59,59		32,09
PL (Lubelsko-Sandomierski)													
PT (Oeste)	50,00		90,00				78,68	77,25	77,00	77,80	70,54	63,00	73,03

Source: AMIS - extraction 30/08/2021

2019-2020	Jul. 2019	Aug. 2019	Sep. 2019	Oct. 2019	Nov. 2019	Dec. 2019	Jan. 2020	Feb. 2020	Mar. 2020	Apr. 2020	May. 2020	Jun. 2020	campaign
AT (Gleisdorf)	69,87	58,25	65,13	66,66	65,78	70,67	69,07	72,03	74,19	80,34	86,43	93,65	72,67
BE (Sint Truiden)													
DE (Niedersachsen)	53,00		63,06	59,93	61,62	60,96	65,17	65,10	72,71	76,26	76,51	74,70	66,27
ES (Girona)													
ES (Lleida)													
FR (Rhône-Méditerranée)		103,94	98,01	88,47	90,47	93,42	97,50	100,00	117,50	133,75			102,56
FR (Sud-Ouest)													
FR (Val de Loire)			88,45	82,50	78,00	78,50	78,30	82,50	87,25	96,20	98,80	102,83	87,33
HU (Budapest)		50,88	49,20	48,48	47,81	50,22	54,95	50,91	54,22	54,30	76,37		53,73
IT (Bolzano)		73,00	80,33	79,00	79,00	79,00	85,00	87,00	87,83	90,00	90,00		83,02
NL (Geldermalsen)			12,00	12,00									12,00
PL (Grojecko-Warecki)	11,75		33,44	31,59	30,28	28,75	32,44	37,37			59,22		33,10
PL (Lubelsko-Sandomierski)													
PT (Oeste)				80,00	79,00	60,33	55,00	61,80	76,17	71,00	70,00	61,00	68,26

Source: AMIS - extraction 17/04/2020

2018-2019	Jul. 2018	Aug. 2018	Sep. 2018	Oct. 2018	Nov. 2018	Dec. 2018	Jan. 2019	Feb. 2019	Mar. 2019	Apr. 2019	May. 2019	Jun. 2019	campaign
AT (Gleisdorf)	69,23	68,00	60,60	48,60	40,67		57,60	44,12	58,25	59,00	60,80	65,00	57,44
BE (Sint Truiden)													
DE (Niedersachsen)			66,63	55,53	51,30	49,67	52,01	50,91	45,97	54,33	55,76	52,63	53,47
ES (Girona)													
ES (Lleida)													
FR (Rhône-Méditerranée)		125,56	96,67	95,00									105,74
FR (Sud-Ouest)													
FR (Val de Loire)			85,25	89,00	86,95	88,25	80,20	80,00	80,00	80,00	86,20	90,00	84,59
HU (Budapest)		49,39	47,52	45,63	43,95	43,82							46,06
IT (Bolzano)		87,50	83,20	77,40	80,50	82,50	81,00	75,00	73,80	73,00			79,32
NL(Geldermalsen)			7,00	7,00	31,78						55,50	61,00	32,46
PL (Grojecko-Warecki)			19,58	12,78	13,15	12,70	17,19	22,92	22,08	11,32	12,53	47,42	19,17
PL (Lubelsko-Sandomierski)													
PT (Oeste)			97,50	74,80	79,80	77,67	79,40	80,00	79,00	79,80	65,00		79,22

Source: AMIS - extraction 18/11/2019

2017-2018	Jul. 2017	Aug. 2017	Sep. 2017	Oct. 2017	Nov. 2017	Dec. 2017	Jan. 2018	Feb. 2018	Mar. 2018	Apr. 2018	May. 2018	Jun. 2018	campaign
AT (Gleisdorf)		69,00	86,50	77,00	81,40	78,00	82,60	79,60	81,80	90,17	92,40	92,00	82,77
BE (Sint Truiden)													
DE (Niedersachsen)			94,67	90,54	91,98	94,47	95,65	97,40	98,03	103,44	106,50	112,33	98,50
ES (Girona)													
ES (Lleida)													
FR (Rhône-Méditerranée)		119,67	108,60	108,08	110,00	113,75	124,00	125,00	127,50				117,08
FR (Sud-Ouest)													
FR (Val de Loire)			93,50	85,00	81,10	81,90	89,80	91,50	97,50	104,67	118,50	119,00	96,25
HU (Budapest)			50,80	51,63	53,53	55,38	62,11	61,89	63,52	65,69			58,07
IT (Bolzano)		83,00	83,00	87,17	88,00	88,00	89,20	96,80	98,40	95,00			89,84
NL(Geldermalsen)				52,83	58,00	58,00	54,50	51,50					54,97
PL (Grojecko-Warecki)			37,48	38,10	41,68	33,26	37,96	39,91	41,85	43,29	51,82		40,60
PL (Lubelsko-Sandomierski)	36,00												36,00
PT (Oeste)				60,00	56,00	50,00	55,00	55,00	51,00	50,00	53,00	55,00	53,89

Source: AMIS - extraction 06/04/2018

2016-2017	Jul. 2016	Aug. 2016	Sep. 2016	Oct. 2016	Nov. 2016	Dec. 2016	Jan. 2017	Feb. 2017	Mar. 2017	Apr. 2017	May. 2017	Jun. 2017	campaign
AT (Gleisdorf)	70,00					75,00	80,00	86,40	76,00			69,00	76,07
BE (Sint Truiden)													
DE (Niedersachsen)			43,75	43,90	42,75	45,00	48,00		45,00				44,73
ES (Girona)													
ES (Lleida)													
FR (Rhône-Méditerranée)		86,00	79,72	77,50	72,50	75,00							78,14
FR (Sud-Ouest)													
FR (Val de Loire)			80,14	80,00	84,00	85,00	84,23	82,70	83,00	89,00	104,00		85,79
HU (Budapest)			40,86	43,85	46,01								43,57
IT (Bolzano)		78,00	75,65	66,27	67,15	70,00	74,85	76,00	76,00	76,00	76,00		73,59
NL(Geldermalsen)				25,56	43,31	27,23	41,98	65,91	33,00				39,50
PL (Grojecko-Warecki)	13,60	28,13	21,23	18,92	20,59			30,14					22,10
PL (Lubelsko-Sandomierski)	27,08	26,95		23,14	19,55	23,93	24,71	29,62	27,87	25,19		37,15	26,52
PT (Oeste)					56,00	56,00	56,00	56,00	56,00	56,00			56,00

Source: AMIS - extraction 20/10/2017

2015-2016	Jul. 2015	Aug. 2015	Sep. 2015	Oct. 2015	Nov. 2015	Dec. 2015	Jan. 2016	Feb. 2016	Mar. 2016	Apr. 2016	May. 2016	Jun. 2016	campaign
AT (Gleisdorf)		72,00	62,50	74,40	74,00	72,67	62,50	66,00	66,33	65,80	63,20	68,67	68,01
BE (Sint Truiden)		72,00	62,50	74,40	74,00	72,67							71,11
DE (Niedersachsen)			45,50	44,38	39,20	35,83	62,50	66,00	66,33	65,80	63,20	68,67	55,74
ES (Girona)			45,50	44,38	39,20	35,83							41,23
ES (Lleida)		67,55											67,55
FR (Rhône-Méditerranée)		103,50											103,50
FR (Sud-Ouest)													
FR (Val de Loire)			84,54	75,50	71,80	76,60	82,82						78,25
HU (Budapest)				50,29	48,37	47,96	68,00	68,00	69,78	71,00			60,48
IT (Bolzano)		68,00	69,04	71,00	71,00	71,00	71,00	71,00	71,00	71,00			70,45
NL(Geldermalsen)		111,72		45,69	58,91	38,50		31,00			34,00		53,30
PL (Grojecko-Warecki)			33,11	28,22					16,41	16,26	16,77	16,89	21,28
PL (Lubelsko-Sandomierski)				28,22		28,00	27,27	27,27	27,94	27,88	27,26	27,31	27,64
PT (Oeste)				43,00	54,00	71,50	80,00	82,20	91,40	91,00	91,00		75,51

Source: AMIS - extraction 04/10/2016

2014-2015	Jul. 2014	Aug. 2014	Sep. 2014	Oct. 2014	Nov. 2014	Dec. 2014	Jan. 2015	Feb. 2015	Mar. 2015	Apr. 2015	May. 2015	Jun. 2015	campaign
AT (Gleisdorf)	66,17	64,00	62,00	53,50	51,40	47,00	57,50	57,00	62,60	63,33	66,00	65,40	59,66
BE (Sint Truiden)			33,67										33,67
DE (Niedersachsen)			31,00	20,17	23,75	29,17	31,50		31,25	30,00			28,12
ES (Girona)		56,02	60,13	57,93	57,16	56,87							57,62
ES (Lleida)		51,22	50,76	52,24	51,53	57,42							52,63
FR (Rhône-Méditerranée)		76,70	65,00										70,85
FR (Sud-Ouest)													
FR (Val de Loire)			62,88	64,64	68,17	71,31	77,46	80,00	81,23	82,00			73,46
HU (Budapest)			34,87	34,55	33,98	34,23	33,87	34,70	36,62	43,49	64,48		38,98
IT (Bolzano)		53,00	54,04	51,44	53,40	57,56	62,23	70,25	74,00	74,00	74,00		62,39
NL(Geldermalsen)		51,81	31,78	45,36	49,19			43,31	28,00				41,57
PL (Grojecko-Warecki)	19,33		15,12	16,65	17,81	22,46	22,49	24,51	27,78	64,12	63,60	42,06	30,54
PL (Lubelsko-Sandomierski)			28,73	22,77	17,55	18,02							21,77
PT (Oeste)	45,00												45,00

Source: AMIS - extraction 09/11/2015

2013-2014	Jul. 2013	Aug. 2013	Sep. 2013	Oct. 2013	Nov. 2013	Dec. 2013	Jan. 2014	Feb. 2014	Mar. 2014	Apr. 2014	May. 2014	Jun. 2014	campaign
AT (Gleisdorf)		86,00	95,00	76,50	75,60	74,67	70,40	70,40	71,40	63,80	68,80	66,80	74,49
BE (Sint Truiden)					44,00	40,00							42,00
DE (Niedersachsen)			60,00	59,42	54,66	50,00	57,25			60,00			56,89
ES (Girona)						73,51	73,51						73,51
ES (Lleida)		80,46	71,94	71,35	72,51	71,96	72,88	68,30	67,27	67,27			71,55
FR (Rhône-Méditerranée)		121,44	95,36										108,40
FR (Sud-Ouest)													
FR (Val de Loire)			94,00	83,75	80,00	80,25	84,69	86,42	90,86	98,80			87,35
HU (Budapest)			36,79		38,21	37,63	36,87	38,22	40,19	46,26	49,07		40,41
IT (Bolzano)		88,00	88,00	88,00	88,00	84,00	78,00	78,00	78,00	78,00	78,00		82,60
NL(Geldermalsen)			54,27	61,22	59,89	82,52							64,47
PL (Grojecko-Warecki)		46,68		28,38	31,45	42,96		40,40	42,96	36,94	27,17	29,74	36,30
PL (Lubelsko-Sandomierski)					38,83	37,87		31,71	40,47	40,76	33,95	30,94	36,36
PT (Oeste)					60,00	60,00	60,00	60,00	60,00	52,50	37,00	35,00	87,50

Source: AMIS - extraction 24/09/2014

2012-2013	Jul, 2012	Aug, 2012	Sep, 2012	Oct, 2012	Nov, 2012	Dec, 2012	Jan, 2013	Feb, 2013	Mar, 2013	Apr, 2013	May, 2013	Jun, 2013	campaign
AT (Gleisdorf)	65,50	70,00	71,75	70,00	69,60	73,33	69,80	71,60	72,75	74,00	74,33	74,00	71,39
BE (Sint Truiden)	108,50	124,33	87,00	119,33	115,33	120,00							112,42
DE (Niedersachsen)			49,22	51,03	50,64	48,55	48,45	55,00	55,00				51,13
ES (Girona)			63,62	68,58	70,77	72,65	72,84	75,50	83,39				72,48
ES (Lleida)		67,73	65,63	68,80	68,96	69,00							68,02
FR (Rhône-Méditerranée)		96,24	83,24										89,74
FR (Sud-Ouest)													
FR (Val de Loire)	105,00	97,85	96,64	98,23	101,00	103,77	105,92	109,23	117,25	121,00			105,59
HU (Budapest)			41,25	41,81	41,98	44,70	43,60	42,26					42,60
IT (Bolzano)		78,00	78,00	83,00	83,00	83,00	83,00	87,58	91,00	91,00			84,18
NL(Geldermalsen)			83,61	58,08	86,37	40,00	77,09			63,02			68,03
PL (Grojecko-Warecki)	52,22		35,80	29,46	34,14	45,16	41,30		35,61	48,78	49,49	52,40	42,44
PL (Lubelsko-Sandomierski)			27,17	24,64	21,78	19,60	24,43		29,05	40,31	50,28	56,13	32,60
PT (Oeste)	70,00		55,00	58,00	60,00	56,67	51,00	55,00	59,00	65,00	65,00		59,47

Source: AMIS - extraction 15/10/2013

2011-2012	Jul, 2011	Aug, 2011	Sep, 2011	Oct, 2011	Nov, 2011	Dec, 2011	Jan, 2012	Feb, 2012	Mar, 2012	Apr, 2012	May, 2012	Jun, 2012	campaign
AT (Gleisdorf)	70,00	71,00	54,67	54,60	54,20	56,40	52,60	54,80	56,80	62,60	65,17	66,60	59,95
BE (Sint Truiden)	115,00	95,00	82,14	80,20	68,33	90,50	90,00	90,00	95,00	103,00	114,00	116,75	94,99
DE (Niedersachsen)			36,89	37,34	37,74	40,44	39,53	39,28	39,14	38,00			38,55
ES (Girona)			54,93	59,44	60,92	60,46	65,16	64,61	65,40				61,56
ES (Lleida)			52,33	54,69	56,25	58,93	57,10	59,00	59,00				56,76
FR (Rhône-Méditerranée)		98,25		61,67	65,00								74,97
FR (Sud-Ouest)													
FR (Val de Loire)				65,00	65,00	66,08	70,08						66,54
HU (Budapest)		60,01	50,27	49,39	49,06	46,59	46,54	49,96	51,08	52,31			50,58
IT (Bolzano)			67,35	67,19	68,00	68,00	68,00	68,00	68,00				67,79
NL(Geldermalsen)	40,37	72,34	49,10	32,77	46,33	63,98	68,00			71,00			55,49
PL (Grojecko-Warecki)			22,01	22,70	27,52	32,34	38,65	47,64	49,21	43,07	57,02	69,03	40,92
PL (Lubelsko-Sandomierski)				24,97	23,55	29,33	31,58	35,78	44,33				31,59
PT (Oeste)			70,00	70,00	70,00	70,00	70,00	70,00	70,00	70,00	70,00	70,00	70,00

Source: AMIS - extraction 09/07/2012

Graph 4.7

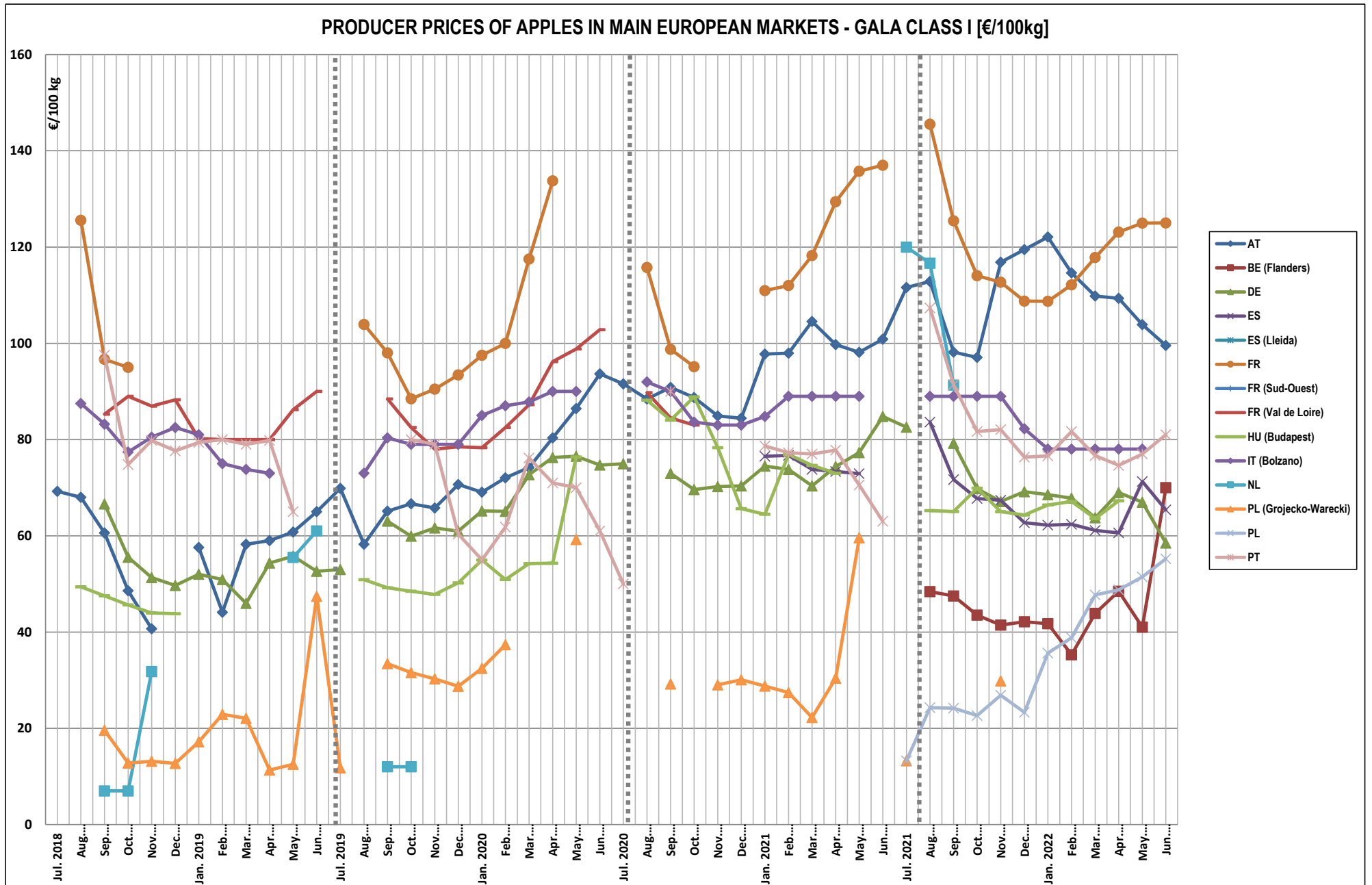


Table 4.3: PRODUCER PRICES OF APPLES IN MAIN EUROPEAN MARKETS- GOLDEN DELICIOUS CLASS I (€/100 kg)

2021-2022	Jul. 2021	Aug. 2021	Sep. 2021	Oct. 2021	Nov. 2021	Dec. 2021	Jan. 2022	Feb. 2022	Mar. 2022	Apr. 2022	May. 2022	Jun. 2022	campaign
AT	77,07	71,92	70,51	78,14	80,08	88,78	75,67	71,96	78,97	77,22	66,88	65,56	75,23
BE (Flanders)	43,73	47,51	60,42	46,93	41,08	38,92	38,10	40,97	39,25	39,76	36,63	35,56	42,41
CZ	70,48	85,64	67,62	67,86	66,61	66,53	66,61	66,97	65,04	67,22	62,81	59,02	67,70
DE	66,24	60,28		46,94	44,93	53,45	53,05	51,92	51,97	47,70	47,02	43,54	51,55
ES	89,48	88,62	87,61	84,75	75,10	68,68	67,25	67,66	62,62	63,55	75,63	76,81	75,65
ES (Lleida)													
FR	138,00	146,70	137,53	128,34	122,57	115,81	111,11	109,75	111,15	113,70	115,10	118,80	122,38
FR (Val de Loire)													
GR (Athina)				86,35	83,51	82,83	85,50	85,50	85,50				84,86
HU (Budapest)			64,20	57,90	60,03	64,37	65,19	64,97	62,28	67,51	70,47		64,10
IT (Bolzano)	82,00	82,00	91,00	91,00	91,00	87,32	84,94	82,96	79,58	79,00	79,00	74,30	83,68
NL (Geldermalsen)													
PL (Grojecko-Warecki)							24,08						24,08
PL	13,14	13,14			17,24	27,53	32,16	44,38	44,51	40,95	44,77	48,37	32,62
PT			74,24	74,78	65,97	67,65	68,81	66,93	65,68	64,57	68,00	68,00	68,46
RO			49,96	38,07	36,37	46,70	48,81	49,79	49,85	52,18	49,52		46,81

Source: AMIS - extraction 07/09/2022

2020-2021	Jul. 2020	Aug. 2020	Sep. 2020	Oct. 2020	Nov. 2020	Dec. 2020	Jan. 2021	Feb. 2021	Mar. 2021	Apr. 2021	May. 2021	Jun. 2021	campaign
AT (Gleisdorf)	83,10	86,18	79,73	88,67	85,70	83,65	84,19	84,36	78,57	76,59	81,70	79,82	82,69
BE (Sint Truiden)	55,18	46,11	59,93	52,37	48,25	50,66	54,38	52,60	48,90	55,63	54,83	51,11	52,49
CZ (Praha)	103,00		83,14	78,53	74,95	73,65	69,51	66,09	62,93	61,59	63,56	66,45	73,04
DE (Niedersachsen)	64,59	69,16		76,62	73,82	68,21	63,78	60,91	62,74	65,11	63,44	63,01	66,49
ES (Girona)													
ES (Lleida)	70,91	78,60	81,32	88,95	85,43	86,63	81,82	83,28	80,79	81,98	98,77	89,47	84,00
FR (Rhône-Méditerranée)		91,70	97,88	88,87			115,26	119,00	121,26	129,10	132,84	135,35	114,58
FR (Val de Loire)	83,00												83,00
GR (Athina)	88,26	97,20	90,00	86,66	83,25	79,55	79,33	95,07	103,50	103,50	103,50	103,50	92,78
HU (Budapest)		93,71	88,40	90,13	85,25	66,40	64,43	63,59	64,99	67,85			76,08
IT (Bolzano)	92,00	92,00	85,38	82,77	82,00	82,00	82,00	82,00	82,00	82,00	82,00	82,00	84,01
NL (Geldermalsen)													
PL (Grojecko-Warecki)	109,43				33,51	33,75	31,09	28,91			15,41		42,02
PL												13,28	
PT	73,00						67,39	72,75	74,65	80,50	75,00	75,00	74,04
RO (Bucharest)			63,62	61,03	51,41	45,90	44,42	41,03	42,98	42,85	44,14	44,71	48,21

Source: AMIS - extraction 30/08/2021

2019-2020	Jul. 2019	Aug. 2019	Sep. 2019	Oct. 2019	Nov. 2019	Dec. 2019	Jan. 2020	Feb. 2020	Mar. 2020	Apr. 2020	May. 2020	Jun. 2020	campaign
AT (Gleisdorf)	50,11	43,96	52,46	57,13	60,52	62,96	64,99	65,42	65,32	70,31	74,18	78,86	62,19
BE (Sint Truiden)	27,94	33,98	42,44	36,88	34,50	35,15	40,96	39,16	38,53	41,94	43,06	47,88	38,54
CZ (Praha)	44,37	41,27	55,38	64,23	64,56	65,59	64,64	68,73	67,54	67,06	72,31	95,77	64,29
DE (Niedersachsen)	54,73	35,60	40,53	60,89	54,86	54,93	59,22	60,00	60,38	62,01	69,65	59,81	56,05
ES (Girona)													
ES (Lleida)	67,50	66,74	70,15	81,12	73,04	66,08	60,92	61,35	61,71	63,74	72,65	76,89	68,49
FR (Rhône-Méditerranée)			83,06	83,40	80,20	80,00	83,50	82,40	85,83	95,00			84,17
FR (Val de Loire)				92,00	84,30	81,50	82,10	82,90	80,83	83,80	85,80	84,40	84,18
GR (Athina)			73,13	73,13	73,13	73,13	73,97	76,50	80,10	84,60	81,00	81,00	76,97
HU (Budapest)	51,19		48,35	47,64	47,34	49,35	54,12	56,75	56,94	54,30	74,07		54,00
IT (Bolzano)	55,00	55,00	56,50	61,40	66,20	67,00	68,80	70,00	71,17	77,00	87,00	91,20	68,86
NL (Geldermalsen)	28,17	36,83	43,63	42,46	38,47	43,14	45,32	53,95					41,50
PL (Grojecko-Warecki)	12,34		38,56	37,76	30,69	32,29	36,26	40,35	41,78	46,89	60,97	97,98	43,26
PL (Lubelsko-Sandomierski)													
PT (Oeste)				84,00	73,00	66,00	67,80	70,40	72,50	73,80	73,40	73,00	72,66
RO (Bucharest)			23,17	28,39	34,82	46,39	52,56	54,45	55,44	73,16			46,05

Source: AMIS - extraction 17/04/2020

2018-2019	Jul. 2018	Aug. 2018	Sep. 2018	Oct. 2018	Nov. 2018	Dec. 2018	Jan. 2019	Feb. 2019	Mar. 2019	Apr. 2019	May. 2019	Jun. 2019	campaign
AT (Gleisdorf)	52,15	77,00	62,25	48,40	43,33		50,80	37,09	50,63	53,20	52,20	50,40	52,50
BE (Sint Truiden)	80,45	67,30	45,74	33,92	35,62	32,82	42,28	38,96	36,76	33,00	36,30	31,08	42,85
CZ (Praha)			58,65	55,12	51,46	50,39	50,90	50,77	51,88	50,71	49,52	50,14	51,96
DE (Niedersachsen)	142,00	57,00	52,83	63,85	56,53	59,69	55,16	54,00	42,39	47,90	50,24	54,73	61,36
ES (Girona)													
ES (Lleida)	92,16	89,29	86,39	92,90	79,49	76,49	70,58	66,46	63,73	66,81	70,53	70,99	77,15
FR (Rhône-Méditerranée)													
FR (Val de Loire)	113,50			81,17	84,10	86,58	85,30	85,00	85,00	85,00	89,00	90,00	88,47
GR (Athina)	80,25	78,53	78,53	73,13	73,13	73,13	75,83	79,88	79,88	79,88	79,88		77,46
HU (Budapest)		53,29	49,69	44,23	44,19	42,91	43,12	46,10	47,56	46,30	47,17	47,76	46,58
IT (Bolzano)	118,00		73,00	75,60	80,00	80,00	78,20	71,00	71,00	67,00	61,20	55,80	75,53
NL (Geldermalsen)	70,34	59,90	43,24	31,73	46,82	40,85	48,91	43,43	42,58	49,57	48,31	47,29	47,75
PL (Grojecko-Warecki)	40,19	36,73	21,30	17,03	13,87	9,70	17,95	23,50	21,61	11,26	10,94	43,67	22,31
PL (Lubelsko-Sandomierski)													
PT (Oeste)	99,00		100,00	85,10	79,75	77,00	84,00	87,00	90,00	87,00	90,00		87,89
RO (Bucharest)				18,26	19,74	22,39	23,38	24,59	25,25	25,69	27,11	27,65	23,78

Source: AMIS - extraction 18/11/2019

2017-2018	Jul. 2017	Aug. 2017	Sep. 2017	Oct. 2017	Nov. 2017	Dec. 2017	Jan. 2018	Feb. 2018	Mar. 2018	Apr. 2018	May. 2018	Jun. 2018	campaign
AT (Gleisdorf)	57,33	55,40	60,20	59,17	62,60	68,80	62,20	60,00	68,40	73,67	81,20	88,00	66,41
BE (Sint Truiden)	34,38	46,58	53,18	54,65	57,66	46,36	60,72	59,60	58,78	68,43	64,84	57,78	55,25
CZ (Praha)			66,50	67,65	67,79	70,32	71,30	70,29	71,59	72,37	71,40	72,38	70,16
DE (Niedersachsen)	33,33	43,38	44,70	66,05	72,91	72,19	73,62	75,07	75,39	80,23	92,54	78,40	67,32
ES (Girona)													
ES (Lleida)	49,68	50,29	59,92	69,73	67,97	68,86	65,28	70,65	72,00	78,70	87,29	96,32	69,72
FR (Rhône-Méditerranée)													
FR (Val de Loire)	70,50	72,00		80,00	80,00	80,00	80,20	82,40	88,00	95,00	101,90	109,50	85,41
GR (Athina)		77,63	66,00	72,00	72,00		73,13	73,80	81,57	77,63	77,40	81,00	75,22
HU (Budapest)													
IT (Bolzano)	59,00	63,00	64,60	81,67	88,00	88,00	90,00	95,50	107,25	109,00	114,40	118,00	89,87
NL (Geldermalsen)	43,17	52,24	66,57	54,10	57,40	55,51	69,71	59,00	71,46	77,08	77,56	73,01	63,07
PL (Grojecko-Warecki)	33,75	35,72	39,10	39,85	40,92	39,55	35,79	39,12	41,14	43,53	42,64	39,35	39,20
PL (Lubelsko-Sandomierski)													
PT (Oeste)				65,00	65,00	65,00	65,00	65,00	65,00	65,00	74,00	80,00	
RO (Bucharest)			40,22	41,01	39,55	40,42	40,82	40,98	41,51	42,89	45,05	45,32	41,78

Source: AMIS - extraction 06/04/2018

2016-2017	Jul. 2016	Aug. 2016	Sep. 2016	Oct. 2016	Nov. 2016	Dec. 2016	Jan. 2017	Feb. 2017	Mar. 2017	Apr. 2017	May. 2017	Jun. 2017	campaign
AT (Gleisdorf)	46,4	50,00	48,20	50,17	60,00	57,75	49,17	47,60	50,60	52,80	50,50	52,80	51,33
BE (Sint Truiden)	25,2	27,60	32,60	24,67	36,80	36,60	41,00	36,80	38,80	41,60	38,60	38,20	34,87
CZ (Praha)	50,86	47,74	51,07	51,38	50,53	51,05	51,52	51,22	51,22	52,67	54,11	53,11	51,37
DE (Niedersachsen)					35,00	35,00		35,00	35,63	34,00	35,17	34,75	34,93
ES (Girona)													
ES (Lleida)	56,6	57,79	55,99	53,63	53,86	53,87	54,95	55,34	53,20	51,96	51,54	49,81	54,04
FR (Rhône-Méditerranée)													
FR (Val de Loire)				75,00	74,92	74,90	71,77	68,20	67,00	62,20	70,20	70,13	70,48
GR (Athina)			72,00	65,80	63,00	63,00	63,00	63,00	65,40	76,60	77,00		67,64
HU (Budapest)													
IT (Bolzano)	55	55,00	58,00	64,00	64,00	64,00	63,54	57,83	55,15	52,12	55,22	59,00	58,57
NL (Geldermalsen)	24,19	36,84	35,52	23,59	37,84	33,94	44,10	53,17	48,85	46,02	41,32	43,84	39,10
PL (Grojecko-Warecki)	13,885	26,49	27,38	27,89	23,49	27,25	21,36	25,82	22,98	27,19	38,89	26,09	25,73
PL (Lubelsko-Sandomierski)								23,21					23,21
PT (Oeste)													
RO (Bucharest)			47,42	42,29	39,16	39,76	40,03	40,11	41,11	42,89	44,58	44,70	42,20

Source: AMIS - extraction 20/10/2017

2015-2016	Jul. 2015	Aug. 2015	Sep. 2015	Oct. 2015	Nov. 2015	Dec. 2015	Jan. 2016	Feb. 2016	Mar. 2016	Apr. 2016	May. 2016	Jun. 2016	campaign
AT (Gleisdorf)	57,5	51,20	48,40	50,00	47,40	49,33	54,00	51,60	51,17	51,80	50,60	47,17	50,85
BE (Sint Truiden)	40	41,50	46,40	38,60	36,00	33,60	37,80	34,80	32,80	31,00	27,60	25,80	35,49
CZ (Praha)													
DE (Niedersachsen)							27,00		31,00	31,00	35,00		31,00
ES (Girona)													
ES (Lleida)	49,4364	50,49	50,88	50,66	51,86	50,28	49,63	49,95	50,35	51,34	54,09	55,77	51,23
FR (Rhône-Méditerranée)													
FR (Val de Loire)	67	67,00		71,20	67,70	65,00							67,58
GR (Athina)			63,00	65,80	64,40	63,00	63,00	63,00	63,83	71,20	72,00		65,47
HU (Budapest)													
IT (Bolzano)	58	58,00	63,00	63,00	63,00	63,00	63,00	62,84	59,00	57,62	55,92	55,00	60,11
NL (Geldermalsen)	39,5577	44,26	40,39	36,08	26,36	29,31	38,16	36,63	35,45	41,11	37,65	24,98	35,83
PL (Grojecko-Warecki)					23,58	17,78							20,68
PL (Lubelsko-Sandomierski)	48,0317	48,12											48,08
PT (Oeste)													
RO (Bucharest)							48,01	49,01	48,49	49,65	49,78	62,21	51,19

Source: AMIS - extraction 00/10/2016

2014-2015	Jul. 2014	Aug. 2014	Sep. 2014	Oct. 2014	Nov. 2014	Dec. 2014	Jan. 2015	Feb. 2015	Mar. 2015	Apr. 2015	May. 2015	Jun. 2015	campaign
AT (Gleisdorf)	62,5	60,40	57,80	49,33	45,60	39,00			46,00	42,67	45,00	56,60	50,49
BE (Sint Truiden)				23,50	27,60	27,75	29,50	28,50	29,20	29,60	34,80	39,80	30,03
CZ (Praha)													
DE (Niedersachsen)	32,145	27,33	30,00	26,25		24,50	24,25	30,13	28,80	29,20	32,10	34,50	29,02
ES (Girona)		53,00	53,47	53,21	54,31	53,01	50,28	51,13	51,81	55,65	57,53	60,55	53,99
ES (Lleida)	49,6243	47,11	46,01	44,28	44,96	43,12	40,13	40,55	40,74	40,33	42,98	46,21	43,84
FR (Rhône-Méditerranée)			68,62	65,00	65,00	65,00							65,90
FR (Val de Loire)	57			65,00	64,08	61,38	60,15	63,09	64,92	64,67	66,40	68,08	63,48
GR (Athina)	63	70,00	59,25	71,40	68,20	65,50	63,00	63,00	68,80	72,00	72,00	72,00	67,35
HU (Budapest)													
IT (Bolzano)	65		57,71	55,15	53,08	53,00	53,00	53,00	53,00	53,00	55,40	58,00	55,39
NL (Geldermalsen)	27,7786	27,70	30,24	27,94	27,99	20,81	28,22	28,02	31,12	27,74	42,25	35,52	29,61
PL (Grojecko-Warecki)					21,51	21,26	20,15	29,00	35,08	41,29	47,88	42,80	32,37
PL (Lubelsko-Sandomierski)							18,74	19,14	27,16	35,54	41,57	48,14	31,71
PT (Oeste)	50												50,00
RO (Bucharest)	54,268	53,92	44,90	38,69	36,13	35,02	37,53	37,22	37,27	40,91	42,06		41,63

Source: AMIS - extraction 09/11/2015

2013-2014	Jul. 2013	Aug. 2013	Sep. 2013	Oct. 2013	Nov. 2013	Dec. 2013	Jan. 2014	Feb. 2014	Mar. 2014	Apr. 2014	May. 2014	Jun. 2014	campaign
AT (Gleisdorf)	82,8	87,60	88,60	86,83	80,00	71,00	61,40	63,80	65,40	54,80	58,20	54,40	71,24
BE (Sint Truiden)			46,00		54,00		43,00			63,50	58,00		52,90
CZ (Praha)			54,26	52,67	49,65	49,54	49,49	50,70	51,60	53,33	54,38	58,94	52,46
DE (Niedersachsen)	55	47,00	47,00		50,00		48,53	48,73	44,95	37,94	31,72	32,56	44,34
ES (Girona)						62,89	62,89						62,89
ES (Lleida)	93,63	93,30	73,91	69,01	66,33	67,61	65,28	61,32	60,16	58,02	57,09	53,43	68,26
FR (Rhône-Méditerranée)		103,21	89,29										96,25
FR (Val de Loire)			82,67	72,50	65,17	64,08	61,33	61,38	62,42	61,33	59,00		65,54
GR (Athina)		72,00	72,00	69,33	63,00	63,00	63,00	63,00	63,00	63,00	63,00	63,00	65,21
HU (Budapest)													
IT (Bolzano)			83,00	83,00	83,00	81,00	78,00	76,61	76,00	76,00	70,67	67,88	77,52
NL (Geldermalsen)	87,7471	104,49	57,77	40,12	34,16	38,68	53,02	45,10	48,37	49,82	45,85	36,59	53,48
PL (Grojecko-Warecki)			19,94		35,80								27,87
PL (Lubelsko-Sandomierski)								34,04	38,11	34,80	32,13		34,77
PT (Oeste)				75,00	75,00	75,00	75,00	75,00	70,00	65,00	57,00	51,67	68,74
RO (Mures)	60,77			51,92	48,47	48,34	52,21	53,66	54,33	55,32	54,64	55,14	53,48

Source: AMIS - extraction 15/10/2013

2012-2013	Jul, 2012	Aug, 2012	Sep, 2012	Oct, 2012	Nov, 2012	Dec, 2012	Jan, 2013	Feb, 2013	Mar, 2013	Apr, 2013	May, 2013	Jun, 2013	campaign
AT (Gleisdorf)	55,6	56,67	57,60	65,20	73,60	71,33	70,80	70,80	70,60	70,00	68,67	75,80	67,22
BE (Sint Truiden)	73	79,33	90,50	103,00									86,46
CZ (Praha)			56,08	52,24	50,08	48,97	48,42	46,90	45,08	50,29	52,93		50,11
DE (Niedersachsen)				50,00	47,44	46,01	51,29	52,63	52,84	52,69	51,15	51,52	50,62
ES (Girona)	53,92		60,63	63,81	63,29	65,61	65,61	70,29	75,38	82,01	80,44		68,10
ES (Lleida)	49,34	51,80	55,63	57,28	59,72	60,40	62,11	67,47	70,77	71,69	79,55	90,07	64,65
FR (Rhône-Méditerranée)		98,50	79,00	80,00									85,83
FR (Val de Loire)	75		100,00	93,21	90,00	88,00	88,08	86,08	85,31	87,17	94,36	106,78	90,36
GR (Athina)		85,67	73,40	68,33	63,40	67,40	70,50	73,60	77,60	80,80	81,00	81,00	74,79
HU (Budapest)			40,01	41,11	41,64	41,94	40,02	42,91	42,67	46,51	74,11		45,66
IT (Bolzano)	66		78,00	78,00	78,00	78,00	78,00	79,25	81,00	81,00	84,15	87,44	78,99
NL (Geldermalsen)	51,58	49,91	53,62	45,22	43,58	38,87	51,66	56,79	46,34	50,06	66,46	65,27	51,61
PL (Grojecko-Warecki)	47,07					26,92	32,53	34,80	22,96	45,12	44,43	45,38	37,40
PL (Lubelsko-Sandomierski)					27,15	24,50	27,68		31,55	42,33	54,04	56,13	37,63
PT (Oeste)			60,00	62,00	64,00	64,17	51,40	58,00	65,60	70,00	70,00		62,80
RO (Mures)		80,36	72,26	60,53	58,71	61,82	72,63	69,39	67,55	64,10	62,58	59,65	66,33

Source: AMIS - extraction 15/10/2013

Graph 4.8

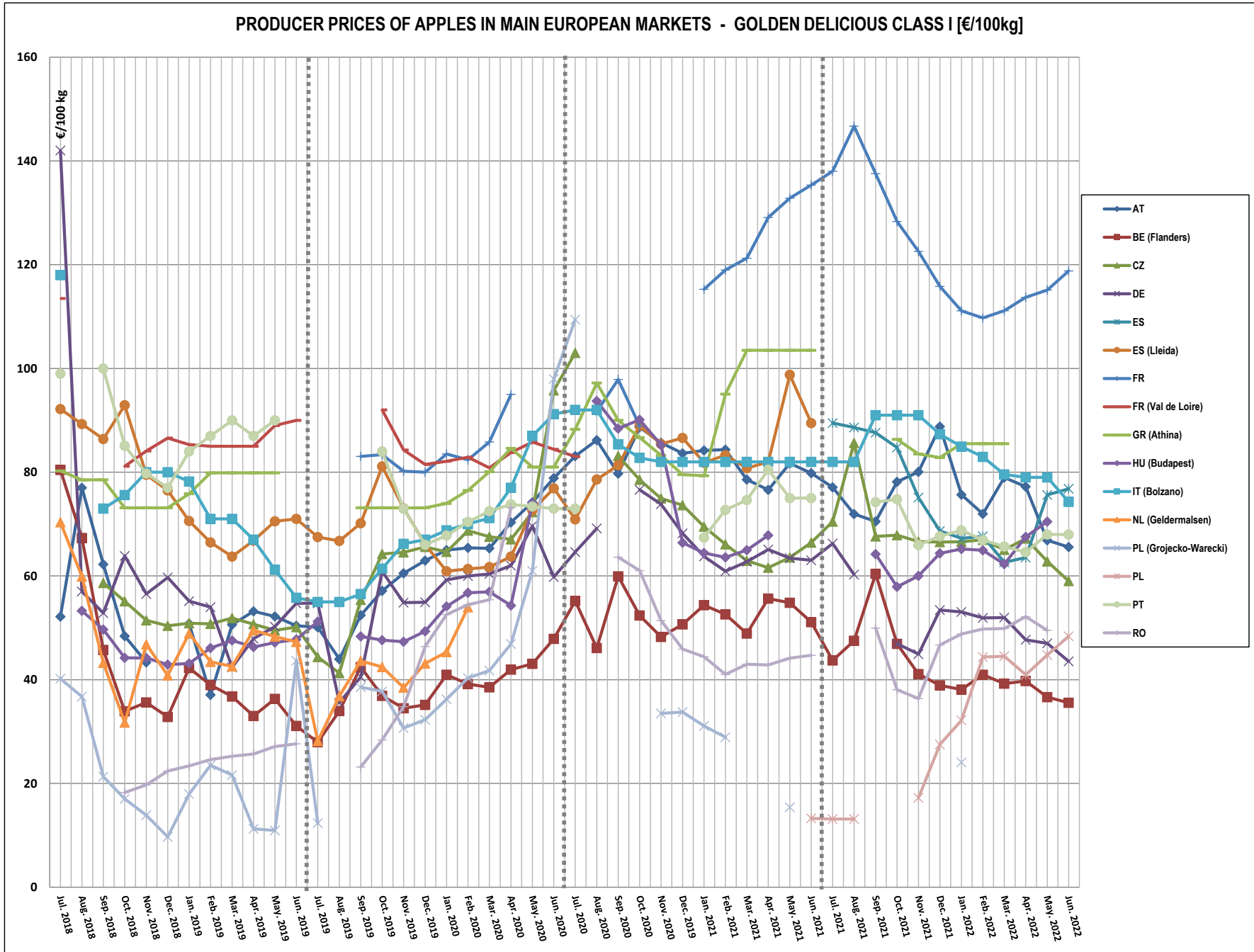


Table 4.4.: PRODUCER PRICES OF APPLES IN MAIN EUROPEAN MARKETS - IDARED CLASS I (€/100 kg)

(pursuant to the Regulation in force: before 09/2011 Regulation (EU) 877/2004 - since 09/2011 Commission Implementing Regulation (EU) 543/2011)

2021-2022	Jul. 2021	Aug. 2021	Sep. 2021	Oct. 2021	Nov. 2021	Dec. 2021	Jan. 2022	Feb. 2022	Mar. 2022	Apr. 2022	May. 2022	Jun. 2022	campaign
AT	83,43	97,49	114,89	114,37	124,72	133,91	152,43	107,64	250,31	169,68	140,39	81,40	130,89
BE (Sint Truiden)													
CZ	66,76	66,61		63,81	64,22	61,33	58,93	58,37	56,05	58,21	59,01	63,93	61,57
HU (Budapest)			59,18	56,79	54,76	57,75	61,07	57,81	57,07	59,32	58,68	59,90	58,23
NL (Geldermalsen)													
PL (Grojecko-Warecki)	13,25												13,25
PL	11,95	11,97					19,55	24,88	28,91	30,97	34,44	36,22	24,86
RO			30,49	30,02			50,00	52,50	52,09				43,02

Source: AMIS - extraction 07/09/2022

2020-2021	Jul. 2020	Aug. 2020	Sep. 2020	Oct. 2020	Nov. 2020	Dec. 2020	Jan. 2021	Feb. 2021	Mar. 2021	Apr. 2021	May. 2021	Jun. 2021	campaign
AT (Gleisdorf)	87,26	96,47				82,38	75,07	84,10	75,30	76,30	89,06	85,33	83,47
BE (Sint Truiden)													
CZ (Praha)				69,62	67,36	70,72	69,42	65,70	61,89	62,07	62,25	64,28	65,92
HU (Budapest)			81,27	88,79	76,50	61,40	59,42	58,81	59,58	60,42	66,19	76,33	68,87
NL (Geldermalsen)													
PL (Grojecko-Warecki)	107,22										19,75		63,48
PL												13,28	
RO (Bucharest)													

Source: AMIS - extraction 30/08/2021

2019-2020	Jul. 2019	Aug. 2019	Sep. 2019	Oct. 2019	Nov. 2019	Dec. 2019	Jan. 2020	Feb. 2020	Mar. 2020	Apr. 2020	May. 2020	Jun. 2020	campaign
AT (Gleisdorf)	19,27	22,45	34,85	79,33	117,20	98,34	66,53	66,23	61,83	68,75	76,74	82,96	66,21
BE (Sint Truiden)													
CZ (Praha)	42,80	41,04	40,61	62,72	66,83	68,73	65,59	67,06	64,13	64,64	65,56	74,54	60,35
HU (Budapest)	45,09		45,61	44,31	43,31	44,47	47,16	49,04	48,78	47,78	67,61		48,32
NL (Geldermalsen)													
PL (Grojecko-Warecki)	11,49	13,95	42,21		28,53	27,81	30,80	32,77	35,93	42,62	59,63	95,28	38,27
PL (Lubelsko-Sandomierski)													
RO (Bucharest)													

Source: AMIS - extraction 17/04/2020

2018-2019	Jul. 2018	Aug. 2018	Sep. 2018	Oct. 2018	Nov. 2018	Dec. 2018	Jan. 2019	Feb. 2019	Mar. 2019	Apr. 2019	May. 2019	Jun. 2019	campaign
AT (Gleisdorf)	50,46						25,00	38,50	48,13	43,40	36,80	28,60	38,70
BE (Sint Truiden)													
CZ (Praha)				50,22	48,38	48,07	47,86	48,60	47,63	44,71	43,60	44,84	47,10
HU (Budapest)			41,30	39,77	41,26	40,87	40,96	39,91	43,58	42,63	43,90	43,98	41,82
NL (Geldermalsen)	101,11	50,67											75,89
PL (Grojecko-Warecki)	33,57	24,56		5,80	11,16	9,69	9,18	10,32	10,37	8,93	9,45	43,20	16,02
PL (Lubelsko-Sandomierski)													
RO (Bucharest)													

Source: AMIS - extraction 18/11/2019

2017-2018	Jul. 2017	Aug. 2017	Sep. 2017	Oct. 2017	Nov. 2017	Dec. 2017	Jan. 2018	Feb. 2018	Mar. 2018	Apr. 2018	May. 2018	Jun. 2018	campaign
AT (Gleisdorf)	63,00		52,00	59,00	62,50	63,00	54,50	51,25	66,60	67,17	67,80	74,20	61,91
BE (Sint Truiden)													
CZ (Praha)	50,64			62,23	67,01	67,39	67,76	67,53	70,02	72,37	73,59	73,02	67,16
HU (Budapest)													
NL (Geldermalsen)				55,00	52,67	51,19	61,36	67,00	67,00		76,50	105,58	67,04
PL (Grojecko-Warecki)	27,52	29,35	35,32	38,68	34,76	32,41	31,71	35,28	36,38	41,15	46,48	39,31	35,70
PL (Lubelsko-Sandomierski)	28,62												28,62
RO (Bucharest)													

Source: AMIS - extraction 06/04/2018

2016-2017	Jul. 2016	Aug. 2016	Sep. 2016	Oct. 2016	Nov. 2016	Dec. 2016	Jan. 2017	Feb. 2017	Mar. 2017	Apr. 2017	May. 2017	Jun. 2017	campaign
AT (Gleisdorf)	45,80	46,00	50,75	53,60					67,00	70,00	58,40	56,20	55,97
BE (Sint Truiden)													
CZ (Praha)	45,98	38,67		46,54	49,19	49,01	49,44	49,52	49,29	50,21	53,97	53,64	48,68
HU (Budapest)													
NL (Geldermalsen)					24,67	22,26	21,00	20,81					22,18
PL (Grojecko-Warecki)	15,68	23,46	23,29	23,29	16,38		17,01	18,55					19,67
PL (Lubelsko-Sandomierski)	24,81	25,96	25,22		17,41	19,43	23,60	19,72	20,18	18,86	30,77	27,58	23,05
RO (Bucharest)													

Source: AMIS - extraction 20/10/2017

2015-2016	Jul. 2015	Aug. 2015	Sep. 2015	Oct. 2015	Nov. 2015	Dec. 2015	Jan. 2015	Feb. 2016	Mar. 2016	Apr. 2016	May. 2016	Jun. 2016	campaign
AT (Gleisdorf)	52,00	59,83	69,80	67,40	59,33	62,00	61,67	60,00	55,33	45,40	44,00	44,50	56,77
BE (Sint Truiden)													
CZ (Praha)													
HU (Budapest)													
NL (Geldermalsen)					31,93	23,67	24,10						26,57
PL (Grojecko-Warecki)								18,34	17,50	16,30	16,64	14,42	16,64
PL (Lubelsko-Sandomierski)	39,97	38,14			21,23	27,10	25,00	24,99	25,61	25,56	24,99	25,04	27,76
RO (Bucharest)	48,14	47,69			25,86	25,90	25,00	24,99	25,61	25,56	24,99	25,04	29,88

Source: AMIS - extraction 04/10/2016

2014-2015	Jul. 2014	Aug. 2014	Sep. 2014	Oct. 2014	Nov. 2014	Dec. 2014	Jan. 2015	Feb. 2015	Mar. 2015	Apr. 2015	May. 2015	Jun. 2015	campaign
AT (Gleisdorf)	33,67	26,40	25,60	34,33	38,50	29,00	42,25	35,00	41,40	37,33	52,80	52,00	37,36
BE (Sint Truiden)													
CZ (Praha)	54,83			41,67	41,47	39,95	38,45	38,12	38,48	39,69	41,23	38,34	41,22
HU (Budapest)													
NL (Geldermalsen)													
PL (Grojecko-Warecki)	19,33						16,56	15,54	25,44	43,78	51,32	39,97	30,28
PL (Lubelsko-Sandomierski)													
RO (Bucharest)													

Source: AMIS - extraction 09/11/2015

2013-2014	Jul. 2013	Aug. 2013	Sep. 2013	Oct. 2013	Nov. 2013	Dec. 2013	Jan. 2014	Feb. 2014	Mar. 2014	Apr. 2014	May. 2014	Jun. 2014	campaign
AT (Gleisdorf)	76,60	79,00	77,50			70,00	66,40	69,20	66,20	55,00	53,00	51,80	66,47
BE (Sint Truiden)									23,00				23,00
CZ (Praha)				49,83	48,25	46,08	46,44	46,77	47,64	47,28	47,82	49,85	47,77
HU (Budapest)													
NL (Geldermalsen)					30,63	23,12		34,50	38,99	37,00		17,00	30,21
PL (Grojecko-Warecki)	35,01				28,68		23,76	25,08	25,05	25,38	27,36	62,56	31,61
PL (Lubelsko-Sandomierski)							21,49	22,48	23,55	20,70	19,93	29,25	22,90
RO (Bucharest)													

Source: AMIS - extraction

2012-2013	Jul, 2012	Aug, 2012	Sep, 2012	Oct, 2012	Nov, 2012	Dec, 2012	Jan, 2013	Feb, 2013	Mar, 2013	Apr, 2013	May, 2013	Jun, 2013	campaign
AT (Gleisdorf)	58,40	62,83	65,75	65,00	65,00	68,00	71,40	70,20	70,40	69,80	71,83	75,20	67,82
BE (Sint Truiden)													
CZ (Praha)				48,80	47,39	47,38	44,90	44,47	44,61	44,79	46,09	47,58	46,22
HU (Budapest)			38,82	39,02	39,20	39,96	38,40	38,20	39,55	45,90	58,24	63,57	44,09
NL (Geldermalsen)										55,51	44,83	56,38	52,24
PL (Grojecko-Warecki)					24,28	22,58	22,91	22,20	20,04	28,31	37,82	37,53	26,96
PL (Lubelsko-Sandomierski)							21,10		18,53	29,28	43,08	47,96	31,99
RO (Bucharest)													

Source: AMIS - extraction 15/10/2013

Graph 4.9

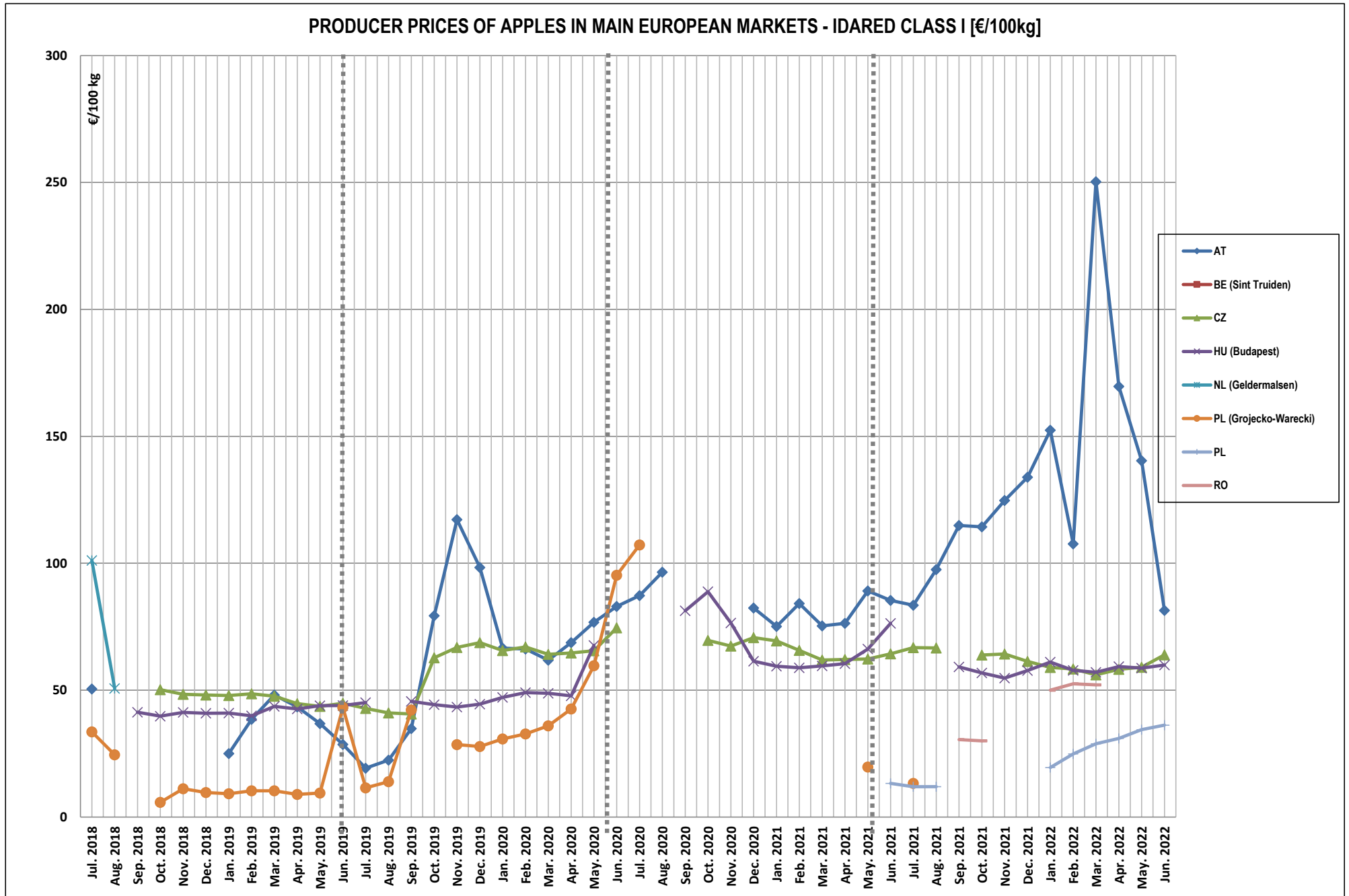


Table 4.5: PRODUCER PRICES OF APPLES IN MAIN EUROPEAN MARKETS - RED DELICIOUS CLASS I (€/100 kg)

(selon règlement en vigueur: avant 09/2011 Règlement (CE) 877/2004 - depuis 09/2011 Règlement d'exécution (UE) 543/2011 de la Commission)

2021-2022	Jul. 2021	Aug. 2021	Sep. 2021	Oct. 2021	Nov. 2021	Dec. 2021	Jan. 2022	Feb. 2022	Mar. 2022	Apr. 2022	May. 2022	Jun. 2022	campaign
AT					74,00		137,57	111,38	122,08	90,70	101,76	112,25	107,10
BE (Sint Truiden)													
ES	88,48	96,08	79,86	93,67	97,26	97,82	100,77	104,13	97,92	101,04	89,27	85,22	94,29
ES (Lleida)													
GR	102,11	107,10	94,72	81,00	79,01	76,90	81,00	81,00	81,00	81,00	81,00	81,00	85,57
IT (Bolzano)			90,00	90,00	90,00	89,39	88,87	85,00	80,97	80,00	80,00	79,33	85,36
PT			73,00	73,00	77,03	72,90	70,00	69,21	65,52	64,60	71,00	71,00	70,73

Source: AMIS - extraction 07/09/2022

2020-2021	Jul. 2020	Aug. 2020	Sep. 2020	Oct. 2020	Nov. 2020	Dec. 2020	Jan. 2021	Feb. 2021	Mar. 2021	Apr. 2021	May. 2021	Jun. 2021	campaign
AT													
BE (Sint Truiden)													
ES							98,77	104,85	101,73	83,47	77,73	76,97	
ES (Lleida)	80,29	88,72	104,80	104,93	106,43	114,71							99,98
GR (Athina)	98,28	109,89	92,25	83,78	77,82	79,11	82,60	78,75	78,75	78,94	79,88	79,99	85,00
IT (Bolzano)			85,75	84,00	84,00	84,00	84,00	84,00	84,00	84,00	84,00	84,00	84,18
PT (Oeste)	73,00						75,00	69,75	72,29	75,00	75,00	75,52	73,65

Source: AMIS - extraction 30/08/2021

2019-2020	Jul. 2019	Aug. 2019	Sep. 2019	Oct. 2019	Nov. 2019	Dec. 2019	Jan. 2020	Feb. 2020	Mar. 2020	Apr. 2020	May. 2020	Jun. 2020	campaign
AT (Gleisdorf)													
BE (Sint Truiden)													
ES (Girona)													
ES (Lleida)	75,54	76,74	87,00	95,90	97,11	93,04	79,84	64,64	63,62	63,29	74,36	80,36	79,29
GR (Athina)	74,37	75,17	75,42	74,25	74,25	72,28	73,41	74,25	76,86	81,73	82,13	86,63	76,73
IT (Bolzano)			68,00	68,00	68,00	68,00	69,20	70,00	71,50	76,80	84,00	88,50	73,20
PT (Oeste)					72,00	73,83	73,00	73,00	73,00	73,00	73,00	73,00	72,98

Source: AMIS - extraction 17/04/2020

2018-2019	juil-18	août-18	sept-18	oct-18	nov-18	déc-18	janv-19	févr-19	mars-19	avr-19	mai-19	juin-19	Saison
AT (Gleisdorf)													
BE (Sint Truiden)													
ES (Girona)													
ES (Lleida)			83,80	84,99	78,05	73,28	66,74	66,80	66,84	72,80	79,40	71,48	74,42
GR (Athina)	82,79	78,19	71,78	75,38	64,58	61,88	61,88	61,88	61,88	61,88	61,88	65,93	67,49
IT (Bolzano)			73,00	69,60	70,00	70,00	68,60	63,00	66,20	68,00	68,00	66,40	68,28
PT (Oeste)							90,00	90,00	90,00	90,00	90,00		90,00

Source: AMIS - extraction 18/11/2019

2017-2018	juil-17	août-17	sept-17	oct-17	nov-17	déc-17	janv-18	févr-18	mars-18	avr-18	mai-18	juin-18	Saison
AT (Gleisdorf)						62,00							62,00
BE (Sint Truiden)													
ES (Girona)													
ES (Lleida)	56,92	54,50	82,20	72,83	70,49	70,13	68,05	69,50	70,99	74,34	80,34	99,67	72,50
GR (Athina)	72,00	75,88			72,00		76,50	76,05	74,39	75,60	81,36	82,13	76,21
IT (Bolzano)	58,00	66,00	82,00	91,50	93,00	93,00	90,60	97,00	97,80	92,00	92,00	92,00	87,08
PT (Oeste)				65,00	65,00	65,00	70,00	70,00	66,00	65,00	68,00	70,00	67,11

Source: AMIS - extraction 06/04/2018

2016-2017	juil-16	août-16	sept-16	oct-16	nov-16	déc-16	janv-17	févr-17	mars-17	avr-17	mai-17	juin-17	Saison
AT (Gleisdorf)	79,33							48,00					63,67
BE (Sint Truiden)													
ES (Girona)													
ES (Lleida)				54,41	54,32	53,99	54,03	53,90	53,98	54,00	55,09	57,00	54,52
GR (Athina)	63,00	63,00	63,00	62,40	63,00	63,00	63,00	63,00	63,00	63,00	63,50	70,80	63,64
IT (Bolzano)	65,00		74,64	73,00	70,12	68,00	68,00	67,58	59,85	58,00	58,00	58,00	65,47
PT (Oeste)													

Source: AMIS - extraction 20/10/2017

2015-2016	juil-15	août-15	sept-15	oct-15	nov-15	déc-15	janv-16	févr-16	mars-16	avr-16	mai-16	juin-16	Saison
AT (Gleisdorf)	76,40	82,17	83,60	82,50	65,80	73,40	76,50	69,80	78,00	75,80	77,20	83,00	77,01
BE (Sint Truiden)													
ES (Girona)	64,25												64,25
ES (Lleida)	59,00						52,65	52,62	53,28	52,91	56,89	57,00	54,91
GR (Athina)	67,60	72,00	71,60	65,17	72,00	65,80	63,00	63,00	63,00	63,00	63,00	63,00	66,01
IT (Bolzano)	72,40	73,00		73,00	73,00	73,00	73,00	71,32	67,00	65,62	65,00	65,00	70,12
PT (Oeste)													

Source: AMIS - extraction 09/11/2015

2014-2015	juil-14	août-14	sept-14	oct-14	nov-14	déc-14	janv-15	févr-15	mars-15	avr-15	mai-15	juin-15	Saison
AT (Gleisdorf)	80,17	73,00	50,40	47,50	48,80	43,00	59,00	56,60	62,80	60,83	63,60	76,40	60,18
BE (Sint Truiden)													
ES (Girona)			60,18	57,29	58,37	60,17	58,09	57,04	56,45	61,97	65,11	64,25	59,89
ES (Lleida)					47,80	46,78	46,41	47,51	48,31	53,75	59,00	59,00	51,07
GR (Athina)	65,33	74,80	59,20	63,00	63,00	58,50	54,00	54,00	59,80	63,00	63,00	67,60	62,10
IT (Bolzano)	76,00		59,71	56,30	56,00	56,00	58,31	61,25	62,00	63,63	68,96	72,40	62,78
PT (Oeste)													

Source: AMIS - extraction 09/11/2015

2013-2014	juil-13	août-13	sept-13	oct-13	nov-13	déc-13	janv-14	févr-14	mars-14	avr-14	mai-14	juin-14	Saison
AT (Gleisdorf)	95,20	79,00	104,80	95,67	116,60	108,33	81,20	83,60	89,60	87,80	77,00	86,60	92,12
BE (Sint Truiden)			50,00										50,00
ES (Girona)						77,65	77,65						77,65
ES (Lleida)				66,11	66,21	68,66	69,34	65,98	64,19	63,59			66,30
GR (Athina)	81,00	78,40	72,00	69,33	63,00	63,00	63,00	63,00	63,00	63,00	63,00	63,00	67,06
IT (Bolzano)			95,00	95,00	95,00	92,20	88,00	84,52	83,00	83,00	81,67		88,60
PT (Oeste)													

Source: AMIS - extraction

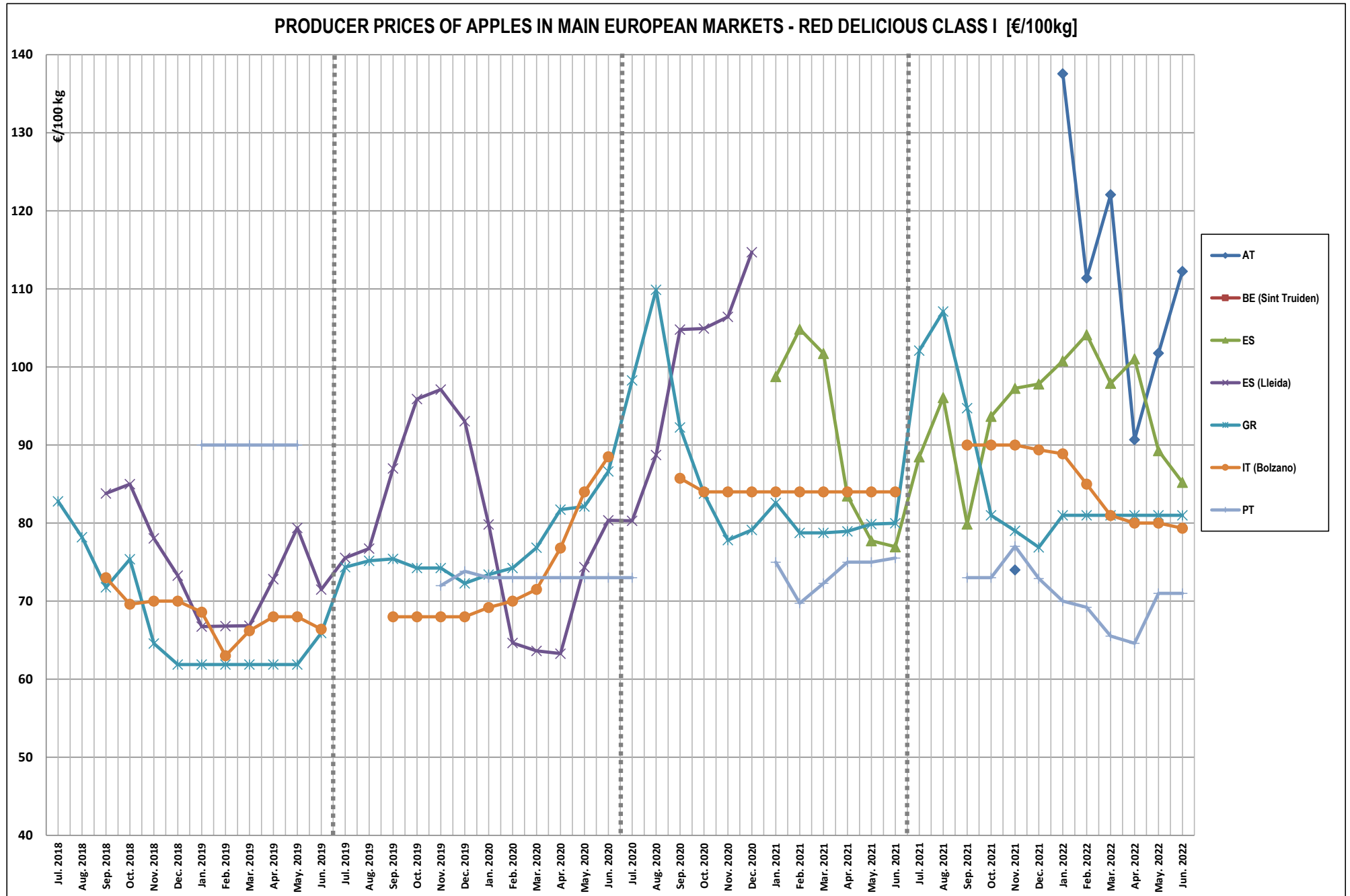
2012-2013	juil-12	août-12	sept-12	oct-12	nov-12	déc-12	janv-13	févr-13	mars-13	avr-13	mai-13	juin-13	Saison
AT (Gleisdorf)	66,60	70,00	76,60	82,00	88,20	91,67	77,60	81,80	82,80	82,20	86,33	91,00	81,40
BE (Sint Truiden)													
ES (Girona)						73,64	76,63	78,89	86,83	87,63	83,44		81,18
ES (Lleida)													
GR (Athina)		85,67	76,60	69,83	63,00	67,00	72,00	73,60	77,60	80,80	81,00	81,00	75,28
IT (Bolzano)	88,00		89,00	91,00	91,00	91,00	91,00	91,00	91,00	91,00	91,00	91,00	90,55
PT (Oeste)	70,00												70,00

Source: AMIS - extraction 15/10/2013

2011-2012	juil-11	août-11	sept-11	oct-11	nov-11	déc-11	janv-12	févr-12	mars-12	avr-12	mai-12	juin-12	Saison
AT (Gleisdorf)	74,80	81,60	70,00	70,40	87,00	84,80	70,40	63,60	67,00	67,20	64,67	65,00	72,21
BE (Sint Truiden)			38,50			47,00					20,00		35,17
ES (Girona)			62,97	61,72	63,88	60,43	65,91	64,88	66,66	65,41	60,57	57,54	63,00
ES (Lleida)													
GR (Athina)		80,00	74,00	68,60	70,20	63,00	66,00	80,80	81,00	81,00	81,00	81,00	75,15
IT (Bolzano)			67,00	67,73	70,88	73,00	73,00	73,00	73,00	73,00	82,23	88,00	74,08
PT (Oeste)				70,00	70,00	70,00	70,00	70,00	70,00	70,00	70,00	70,00	70,00

Source: AMIS - extraction 09/07/2012

Graph 4.10



The end

