



Making Eat Together

A participatory approach to research and policymaking

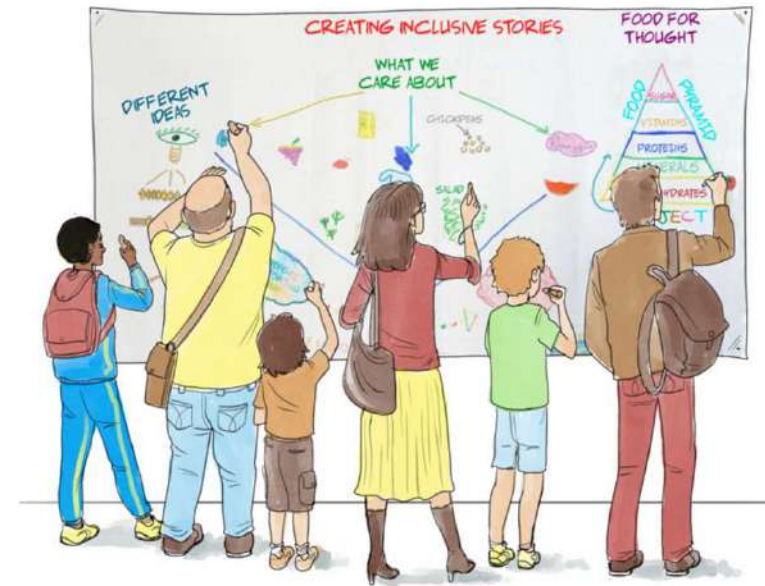
An EU Food Scheme Fit for the Future, November 24, 2022
Anna Paola Quaglia

The European Commission's Competence Centre on Participatory and Deliberative Democracy





Making Eat Together



JRC SCIENCE FOR POLICY REPORT

Imagining 'eat' together: the school meal.

Moving beyond nutrition dimensions alone through extended dialogues with school communities

Quaglia, A. F. & Guimarães Pereira, R. & Ghisla, A.

2022

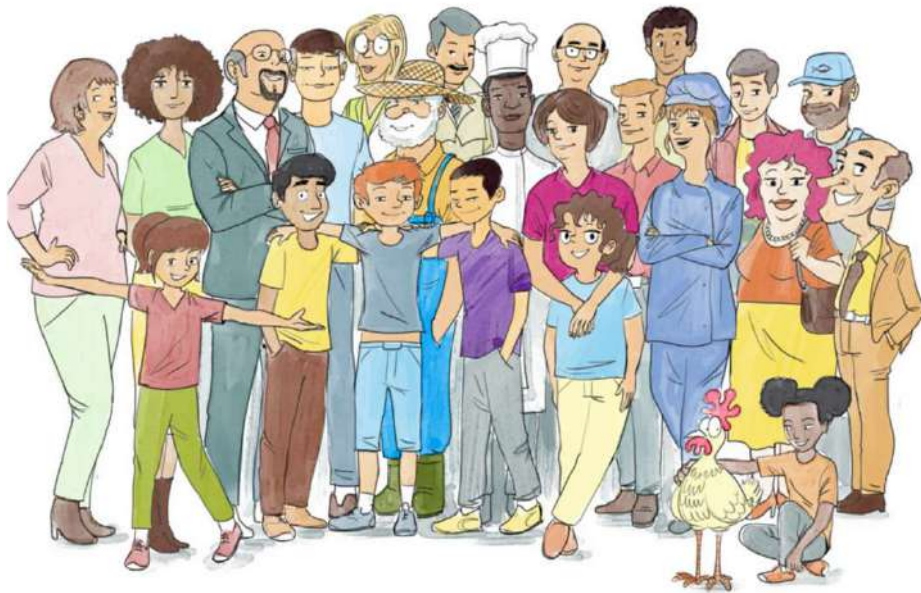


The policy issue



- “a perfectly designed nutritionally valid menu is useless if left on the plate” (Derqui, Fernandez and Fayos, 2018)
- **What is the school meal beyond nutrition?**

The qualitative methodology



- **Where?** Italy, Germany, Portugal
- **When?** Spring 2017 – Winter 2020
- **Who?** 7 primary and secondary schools, plus stakeholders (cooks, nutritionists, caterers, school directors, policy officers, researchers)
- **How?** Literature review; In-depth interviews (21), **ateliers** (10) and short-term ethnographic observations (4)

The approach



The results and lessons learnt



Eating is much more than energy intake & it is material



There is not just one issue-framing



Engage with those experiencing the policy, especially children



Implementation matters



**ENGAGING WITH FOOD,
PEOPLE AND PLACES**

A toolkit



**DIÁLOGOS SOBRE COMIDA,
PESSOAS E ESPAÇOS**

*Guia de
Atividades*



**PARTECIPARE DI GUSTO
DIALOGARE DI CIBO,
PERSONE E LUOGHI**

Un toolkit



**LEBENSMITTEL, MENSCHEN, RÄUME:
ZUSAMMENHÄNGE UND MÖGLICHKEITEN
DES DIALOGS**

Ein Toolkit



Contact and resources

✉ EU-CITIZEN-ENGAGEMENT@ec.europa.eu

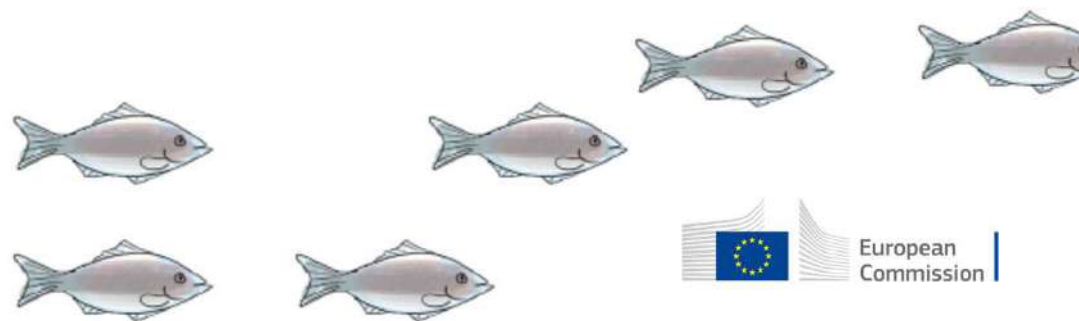
✉ annapaola.quaglia@ec.europa.eu



Check out
the Community of Practice!

Science for Policy Report **Imagining ‘eat’ together: the school meal** →
<https://publications.jrc.ec.europa.eu/repository/handle/JRC126058>

Engaging food, people and places. A toolkit →
<https://publications.jrc.ec.europa.eu/repository/handle/JRC121910>



Thank you



© European Union 2022

Unless otherwise noted the reuse of this presentation is authorised under the [CC BY 4.0](https://creativecommons.org/licenses/by/4.0/) license. For any use or reproduction of elements that are not owned by the EU, permission may need to be sought directly from the respective right holders.

Slides 3-8 illustrations and comics by La Bande Destinée - <http://www.labandedestinee.com/>, source: Quaglia, A. and Guimaraes Pereira, Â., Engaging with Food, People and Places, Publications Office of the European Union, Luxembourg, 2021, ISBN 978-92-76-19997-7, doi:10.2760/33273, JRC121910

