

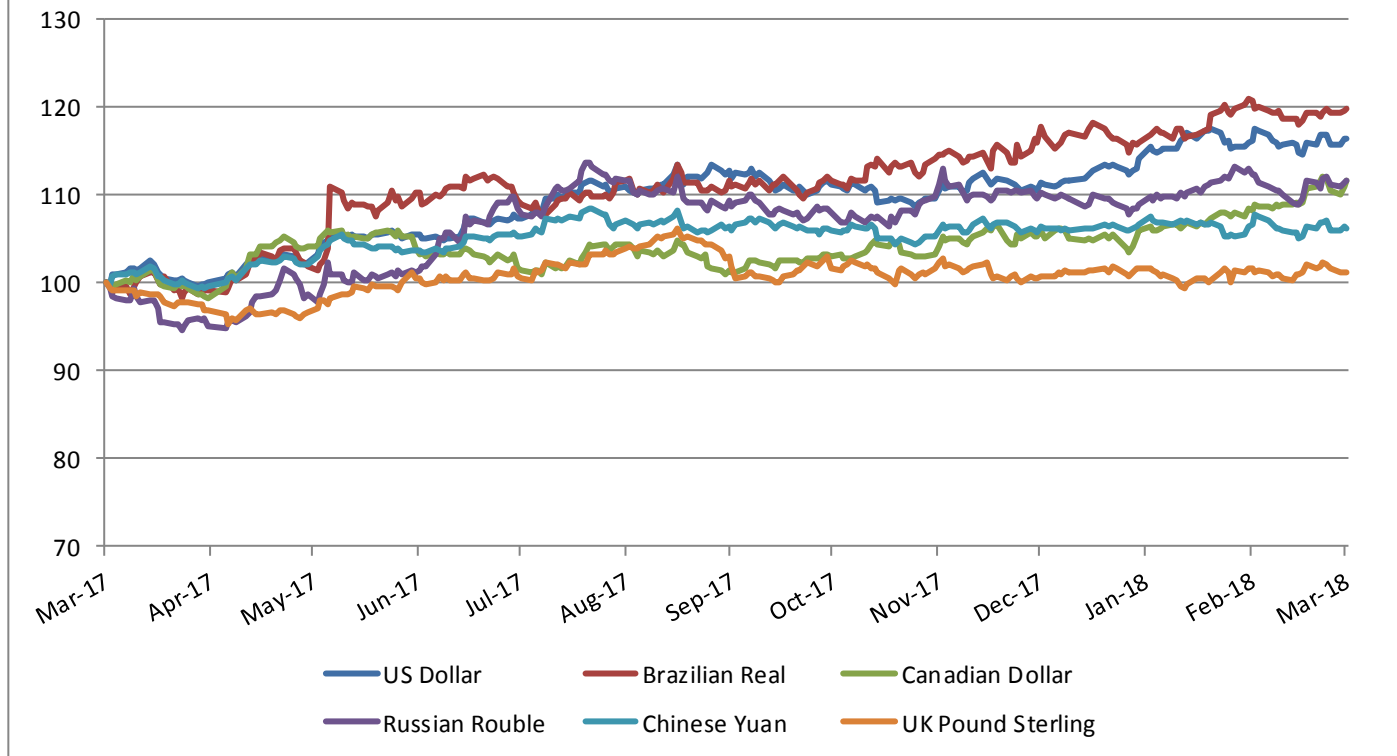


Working Group on Pigmeat
12 April 2018

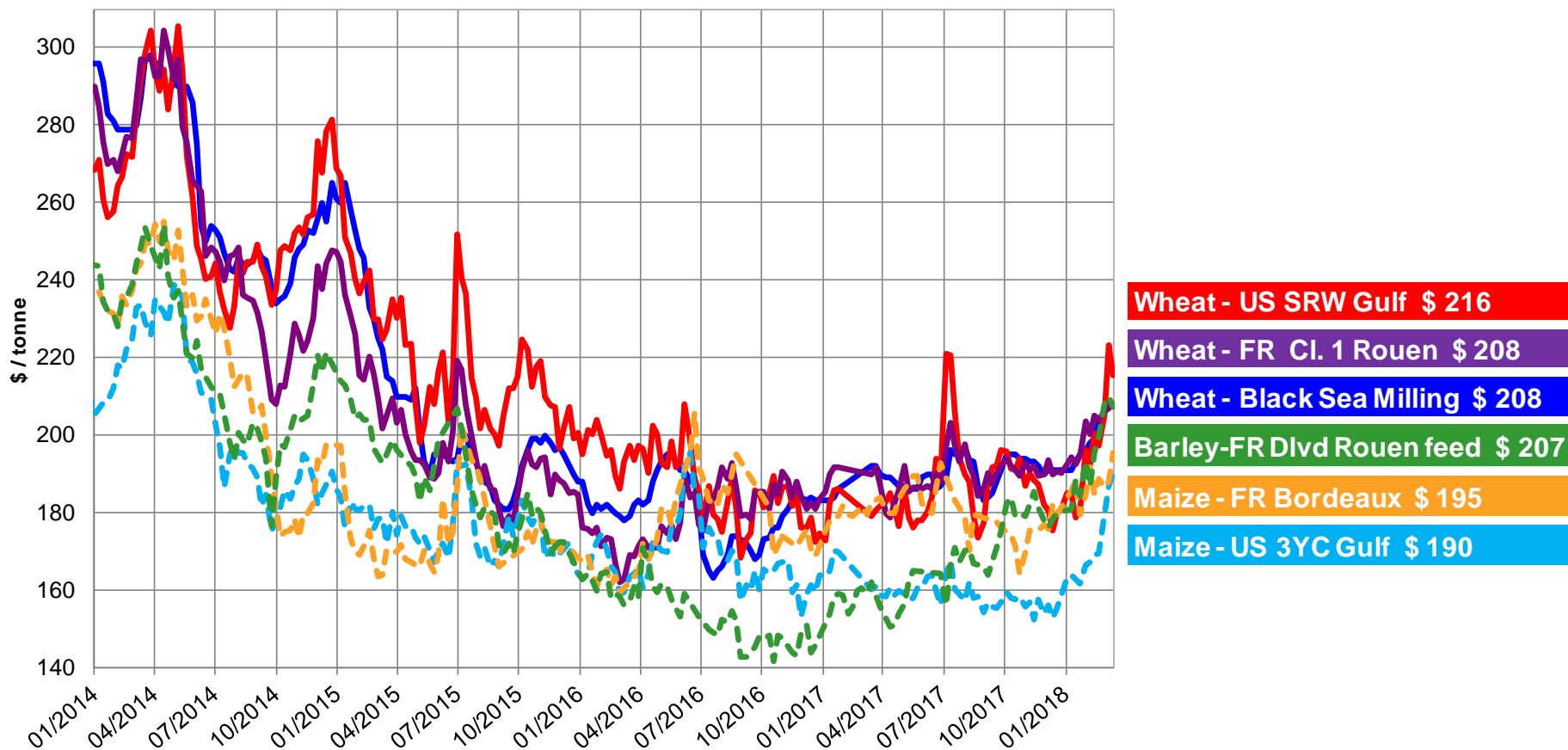
EXCHANGE RATE INDEX/EURO



Index of daily exchange rates of the main trading partners compared to the Euro



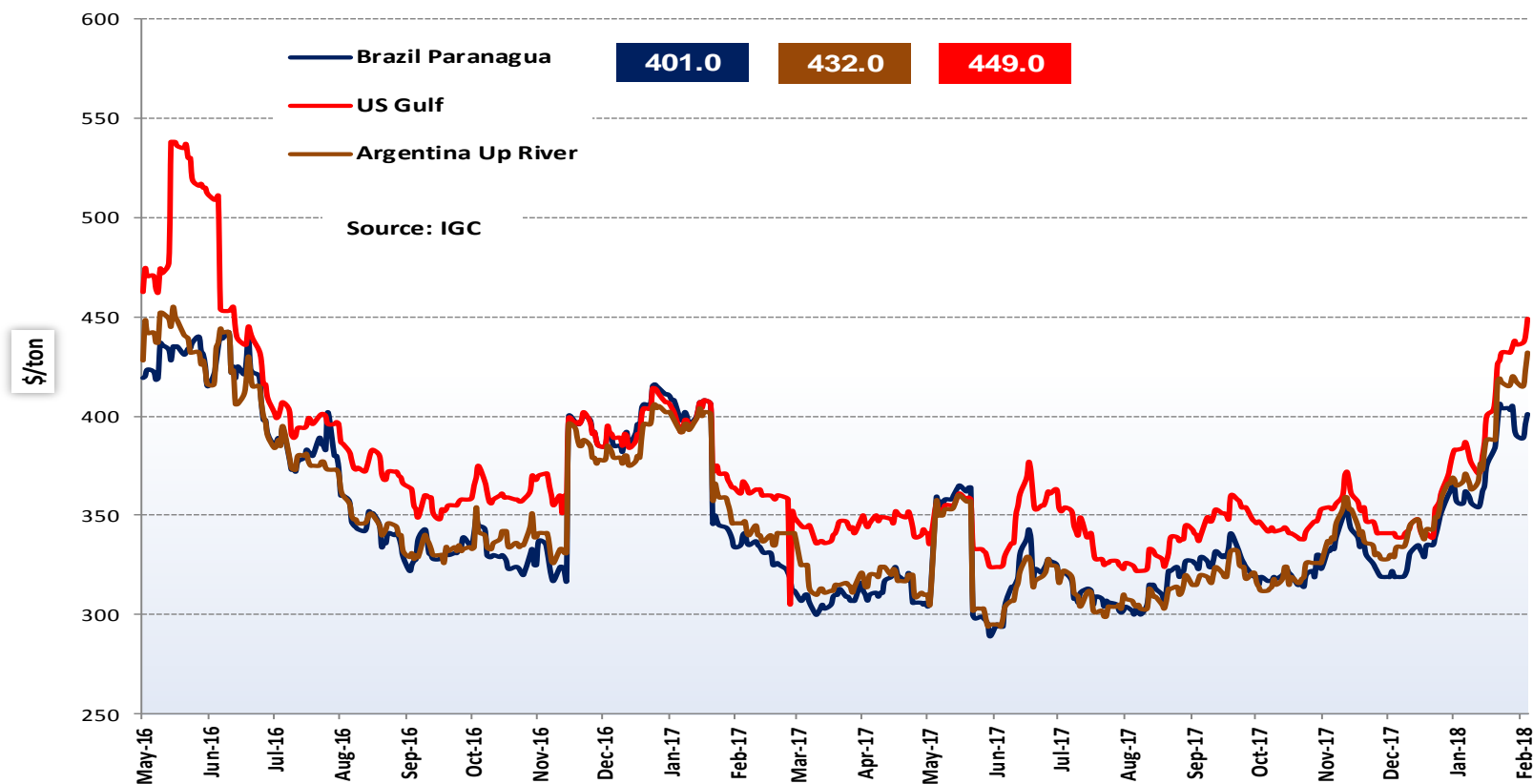
World cereal prices (\$/t)



Soyabeans export prices \$/ton (fob)

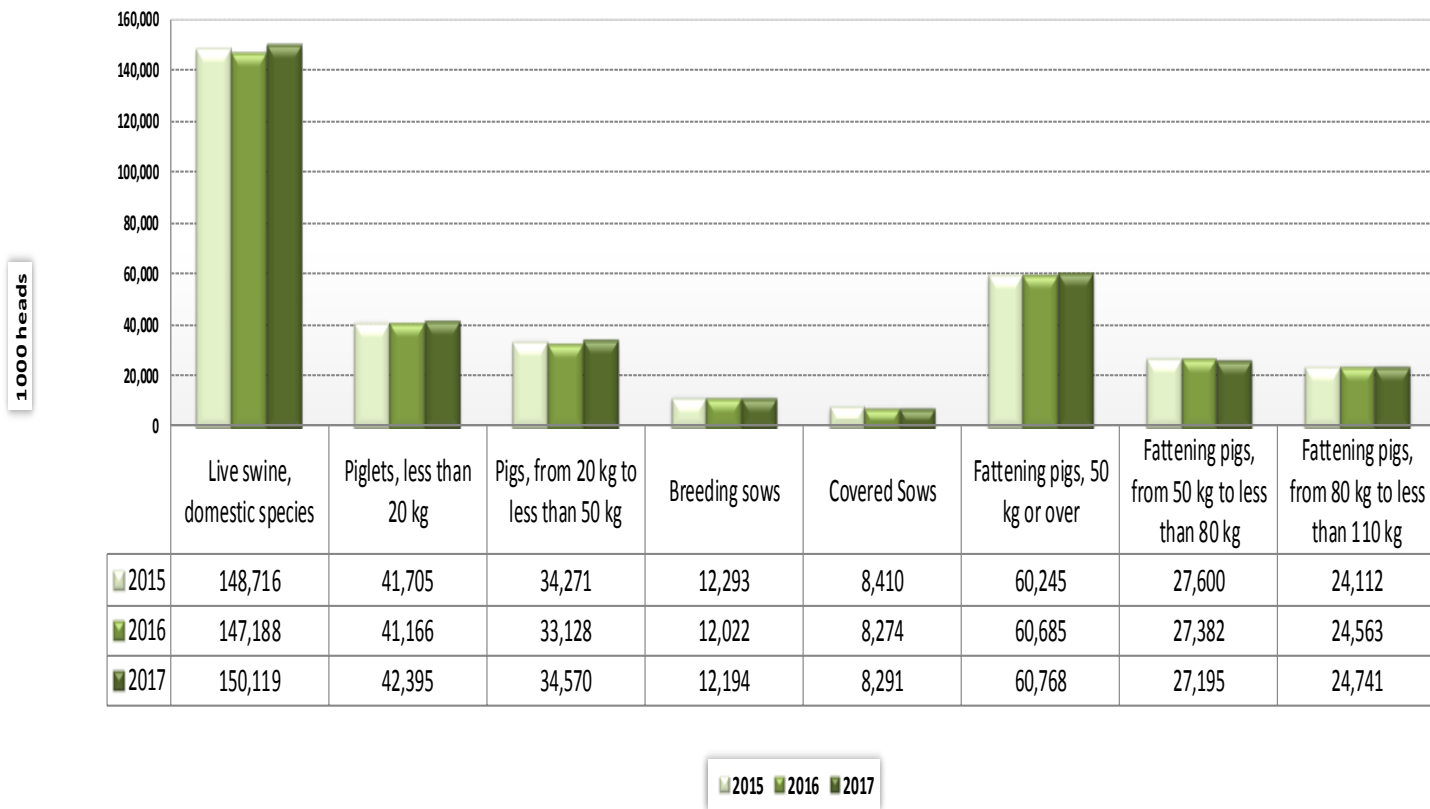


Soyameal world quotations \$/ton





Pig population Livestock survey December 2017

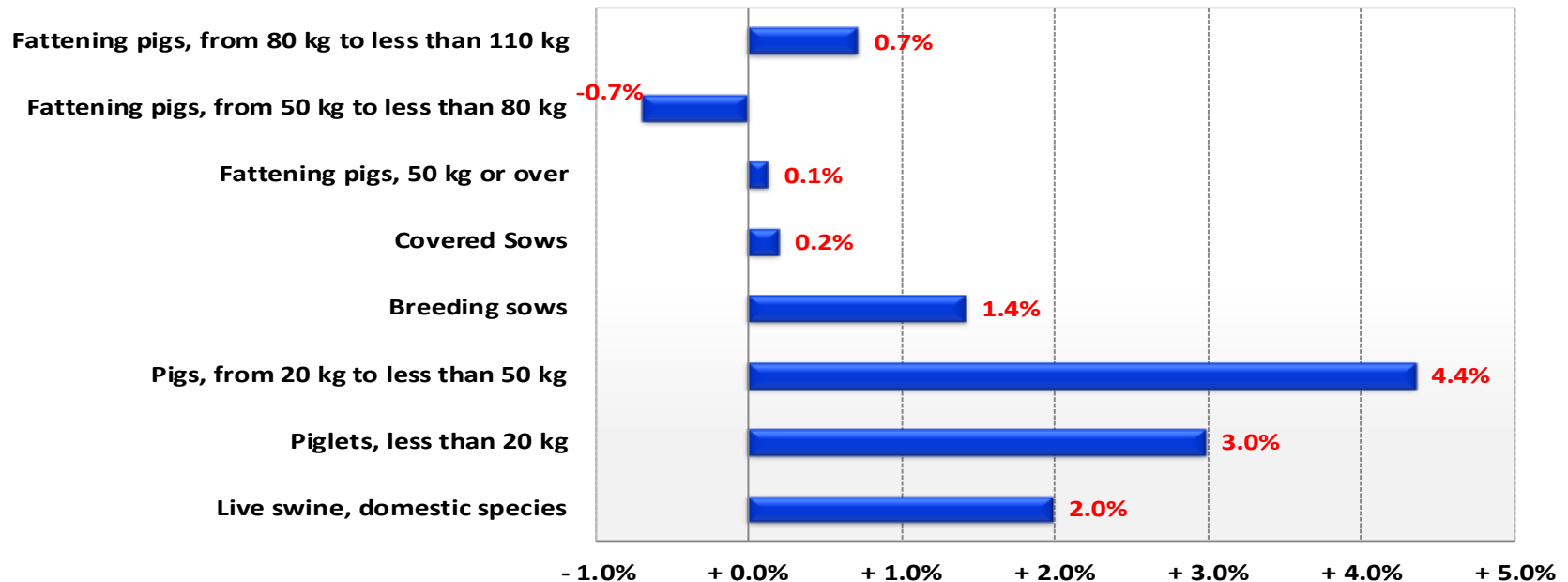


Source: Eurostat



Change in pig population

Livestock survey December 2017 compared to December 2016



Source: Eurostat

LIVESTOCK

EU EVOLUTION TOTAL PIG

DECEMBER 2017 SURVEY (1000 Heads)



European
Commission

Live swine, domestic species

% Var
2017
2016

Piglets, less than 20 kg

% Var
2017
2016

Breeding pigs

% Var
2017
2016

Breeding sows

% Var
2017
2016

Covered sows

% Var
2017
2016

BE	6,364	6,177	6,108	- 1.1%	1,631	1,577	1,564	- 0.8%	449	423	416	- 1.7%	443	420	413	- 1.5%	363	346	340	- 1.6%
BG	600	616	593	- 3.8%	129	121	133	+ 10.0%	60	66	63	- 3.9%	58	65	62	- 3.8%	33	40	39	- 2.8%
CZ	1,555	1,479	1,532	+ 3.5%	416	415	477	+ 14.9%	139	135	138	+ 2.1%	138	134	136	+ 1.8%	88	83	85	+ 2.8%
DK	12,702	12,281	12,832	+ 4.5%	4,416	4,337	4,582	+ 5.6%	1,248	1,247	1,271	+ 1.9%	1,237	1,236	1,260	+ 1.9%	777	765	786	+ 2.7%
DE	27,652	27,376	27,578	+ 0.7%	8,101	7,998	8,071	+ 0.9%	1,999	1,933	1,930	- 0.2%	1,973	1,908	1,905	- 0.2%	1,426	1,383	1,369	- 1.1%
EE	305	266	285	+ 7.0%	97	85	100	+ 17.3%	25	26	27	+ 3.9%	25	25	27	+ 4.7%	19	20	20	+ 3.6%
EL	877	743	759	+ 2.2%	217	195	195	+ 0.0%	148	114	128	+ 12.3%	137	106	118	+ 11.3%	66	58	62	+ 6.9%
ES	28,367	29,232	30,138	+ 3.1%	7,910	8,100	8,433	+ 4.1%	2,505	2,448	2,511	+ 2.6%	2,466	2,415	2,479	+ 2.6%	1,669	1,667	1,635	- 2.0%
FR	13,307	12,791	13,097	+ 2.4%	3,261	3,122	3,208	+ 2.8%	1,021	994	994	+ 0.0%	1,011	986	985	- 0.1%	717	698	691	- 1.0%
HR	1,167	1,163	1,121	- 3.6%	325	309	259	- 16.2%	122	123	128	+ 4.1%	118	120	125	+ 4.2%	38	39	39	+ 0.0%
IE	1,475	1,528	1,616	+ 5.8%	408	426	450	+ 5.6%	140	147	150	+ 2.4%	139	145	149	+ 2.4%	98	98	105	+ 7.7%
IT	8,675	8,478	8,571	+ 1.1%	1,408	1,375	1,385	+ 0.7%	611	587	591	+ 0.7%	582	558	562	+ 0.6%	481	464	465	+ 0.3%
CY	328	353	350	- 0.8%	127	124	124	+ 0.7%	36	33	33	+ 1.2%	35	33	33	+ 1.6%	24	28	28	+ 2.0%
LV	334	336	321	- 4.7%	74	76	63	- 16.8%	38	38	36	- 5.6%	38	38	35	- 6.0%	13	17	15	- 9.6%
LT	688	664	612	- 7.8%	120	124	119	- 4.7%	54	50	51	+ 3.0%	53	49	50	+ 3.1%	44	41	40	- 2.5%
LU	89	95	91	- 4.8%	8	12	9	- 20.1%	5	7	7	- 1.2%	5	7	7	- 1.2%	4	5	4	- 9.3%
HU	3,124	2,907	2,870	- 1.3%	712	668	654	- 2.1%	289	258	254	- 1.6%	285	255	250	- 2.0%	181	169	163	- 3.6%
MT	44	41	34	- 16.2%	10	10	8	- 17.0%	4	4	4	- 5.2%	4	4	3	- 5.5%	4	3	3	- 7.0%
NL	12,453	11,881	12,296	+ 3.5%	5,408	4,986	5,522	+ 10.8%	1,057	1,025	1,075	+ 4.9%	1,053	1,022	1,066	+ 4.3%	703	664	690	+ 3.9%
AT	2,845	2,793	2,820	+ 1.0%	683	661	668	+ 1.1%	250	241	244	+ 1.2%	245	236	239	+ 1.2%	171	168	170	+ 1.5%
PL	10,590	11,107	11,898	+ 7.1%	2,576	2,790	2,705	- 3.1%	831	876	926	+ 5.7%	814	859	909	+ 5.8%	537	582	618	+ 6.2%
PT	2,247	2,151	2,165	+ 0.7%	764	709	743	+ 4.8%	246	238	241	+ 1.4%	240	233	236	+ 1.0%	167	162	161	- 0.6%
RO	4,927	4,708	4,441	- 5.7%	797	786	745	- 5.2%	380	367	348	- 5.3%	375	361	342	- 5.3%	225	223	211	- 5.3%
SI	271	266	257	- 3.2%	60	58	59	+ 2.0%	21	20	21	+ 5.9%	20	19	20	+ 6.4%	12	11	12	+ 9.9%
SK	633	586	614	+ 4.9%	147	171	186	+ 9.3%	54	51	58	+ 12.9%	53	51	57	+ 12.7%	35	20	29	+ 48.8%
FI	1,239	1,197	1,108	- 7.4%	345	342	312	- 8.7%	118	110	101	- 8.4%	116	108	99	- 8.3%	86	78	70	- 9.5%
SE	1,435	1,436	1,382	- 3.8%	412	407	379	- 6.8%	144	142	133	- 6.5%	141	140	132	- 5.9%	99	98	90	- 7.9%
UK	4,422	4,538	4,630	+ 2.0%	1,144	1,184	1,242	+ 4.9%	501	505	508	+ 0.6%	488	490	494	+ 0.8%	331	346	348	+ 0.6%
EU	148,716	147,188	150,119	+ 2.0%	41,705	41,166	42,395	+ 3.0%	12,493	12,208	12,386	+ 1.5%	12,293	12,022	12,194	+ 1.4%	8,410	8,274	8,291	+ 0.2%

LIVESTOCK

DECEMBER 2017 SURVEY (1000 Heads)



European
Commission

EU EVOLUTION TOTAL PIG

Sows covered for the first time

% Var
2017
2016

Sows, not covered

% Var
2017
2016

Gilts not yet covered

% Var
2017
2016

Pigs, from 20 kg to less than 50 kg

% Var
2017
2016

Fattening pigs, 50 kg or over

% Var
2017
2016

	2015	2016	2017		2015	2016	2017		2015	2016	2017		2015	2016	2017		2015	2016	2017	
BE	69	68	63	- 7.4%	80	74	73	- 1.2%	40	37	36	- 2.0%	1,363	1,118	1,248	+ 11.6%	2,922	3,058	2,881	- 5.8%
BG	7	9	11	+ 14.8%	26	25	23	- 5.5%	5	8	7	- 15.0%	155	151	141	- 6.7%	255	278	256	- 8.2%
CZ	19	19	19	- 2.0%	50	50	51	+ 0.3%	23	23	23	- 1.8%	381	357	346	- 3.1%	619	572	571	- 0.2%
DK	191	187	192	+ 2.7%	460	471	474	+ 0.6%	221	234	225	- 3.8%	3,884	3,785	3,971	+ 4.9%	3,154	2,912	3,009	+ 3.3%
DE	231	225	221	- 1.6%	547	525	537	+ 2.2%	225	217	226	+ 4.2%	5,554	5,189	5,337	+ 2.9%	11,999	12,255	12,240	- 0.1%
EE	3	3	3	- 3.3%	6	6	6	+ 8.6%	3	4	5	+ 7.1%	76	60	50	- 16.6%	107	95	108	+ 13.6%
EL	21	15	20	+ 33.3%	70	48	57	+ 18.8%	22	11	17	+ 54.5%	202	164	173	+ 5.5%	309	270	263	- 2.6%
ES	238	250	269	+ 7.2%	797	748	844	+ 12.8%	262	247	302	+ 22.6%	6,595	6,397	7,069	+ 10.5%	11,358	12,285	12,126	- 1.3%
FR	121	121	123	+ 1.7%	294	288	294	+ 2.1%	106	108	113	+ 4.6%	3,637	3,504	3,580	+ 2.2%	5,388	5,171	5,315	+ 2.8%
HR	10	9	8	- 11.1%	80	81	86	+ 6.2%	19	11	15	+ 36.4%	201	248	252	+ 1.6%	519	483	482	- 0.2%
IE	20	19	21	+ 9.2%	41	48	44	- 8.5%	15	16	15	- 5.6%	397	410	417	+ 1.8%	529	545	599	+ 9.9%
IT	83	99	106	+ 6.9%	101	94	96	+ 2.3%	52	56	57	+ 2.1%	1,633	1,602	1,624	+ 1.3%	5,023	4,914	4,971	+ 1.2%
CY	5	5	5	- 1.7%	11	5	5	- 1.0%	5	3	3	- 4.6%	64	75	75	- 0.0%	102	121	117	- 3.3%
LV	4	5	4	- 8.7%	24	21	20	- 3.0%	13	11	10	- 7.2%	80	92	96	+ 4.5%	142	130	125	- 4.0%
LT	6	7	6	- 7.6%	10	8	11	+ 30.5%	6	6	7	+ 15.3%	183	174	167	- 4.1%	331	316	276	- 12.8%
LU	1	1	1	- 4.1%	1	2	2	+ 20.4%	0	1	1	+ 25.6%	36	36	35	- 2.7%	40	41	40	- 2.8%
HU	40	39	35	- 10.3%	103	86	87	+ 1.2%	48	38	44	+ 15.8%	708	624	601	- 3.7%	1,415	1,356	1,362	+ 0.4%
MT	0	0	0	+ 62.1%	1	0	0	+ 7.9%	1	0	0	+ 7.9%	10	9	8	- 11.8%	19	17	14	- 20.7%
NL	120	128	128	+ 0.0%	350	358	376	+ 5.0%	137	157	165	+ 5.1%	1,765	1,730	1,731	+ 0.1%	4,223	4,140	3,967	- 4.2%
AT	24	25	24	- 5.4%	74	68	69	+ 0.5%	25	22	23	+ 2.4%	744	744	737	- 0.9%	1,168	1,148	1,172	+ 2.1%
PL	85	98	104	+ 6.3%	277	277	291	+ 5.0%	47	45	51	+ 12.4%	2,970	3,170	3,509	+ 10.7%	4,214	4,271	4,758	+ 11.4%
PT	30	27	29	+ 5.2%	74	71	75	+ 4.6%	22	22	24	+ 10.0%	504	485	475	- 2.0%	734	719	705	- 1.9%
RO	64	50	48	- 5.6%	149	138	131	- 5.4%	58	54	52	- 4.8%	1,141	1,017	961	- 5.5%	2,610	2,538	2,388	- 5.9%
SI	2	2	2	+ 16.9%	9	8	8	+ 1.7%	2	2	2	+ 10.1%	52	51	47	- 7.7%	139	137	130	- 5.0%
SK	7	4	5	+ 41.9%	19	31	28	- 10.5%	8	11	15	+ 30.4%	173	161	156	- 3.4%	259	203	214	+ 5.7%
FI	17	14	13	- 7.2%	30	31	29	- 5.2%	17	16	19	+ 13.4%	275	256	249	- 2.7%	501	489	447	- 8.6%
SE	28	65	66	+ 1.1%	42	42	41	- 1.2%	23	25	24	- 3.7%	359	354	341	- 3.7%	520	534	530	- 0.8%
UK	54	59	59	+ 0.0%	156	145	146	+ 0.7%	87	82	84	+ 2.4%	1,130	1,165	1,176	+ 0.9%	1,647	1,685	1,704	+ 1.1%
EU	1,500	1,553	1,583	+ 1.9%	3,880	3,749	3,903	+ 4.1%	1,491	1,468	1,564	+ 6.5%	34,271	33,128	34,570	+ 4.4%	60,245	60,685	60,768	+ 0.1%

LIVESTOCK

EU EVOLUTION TOTAL PIG

DECEMBER 2017 SURVEY (1000 Heads)



Fattening pigs, from 50 kg to less

% Var
2017
2016

2015 2016 2017

Fattening pigs, from 80 kg to less

% Var
2017
2016

2015 2016 2017

Fattening pigs, 110 kg or over

% Var
2017
2016

2015 2016 2017

Breeding boars

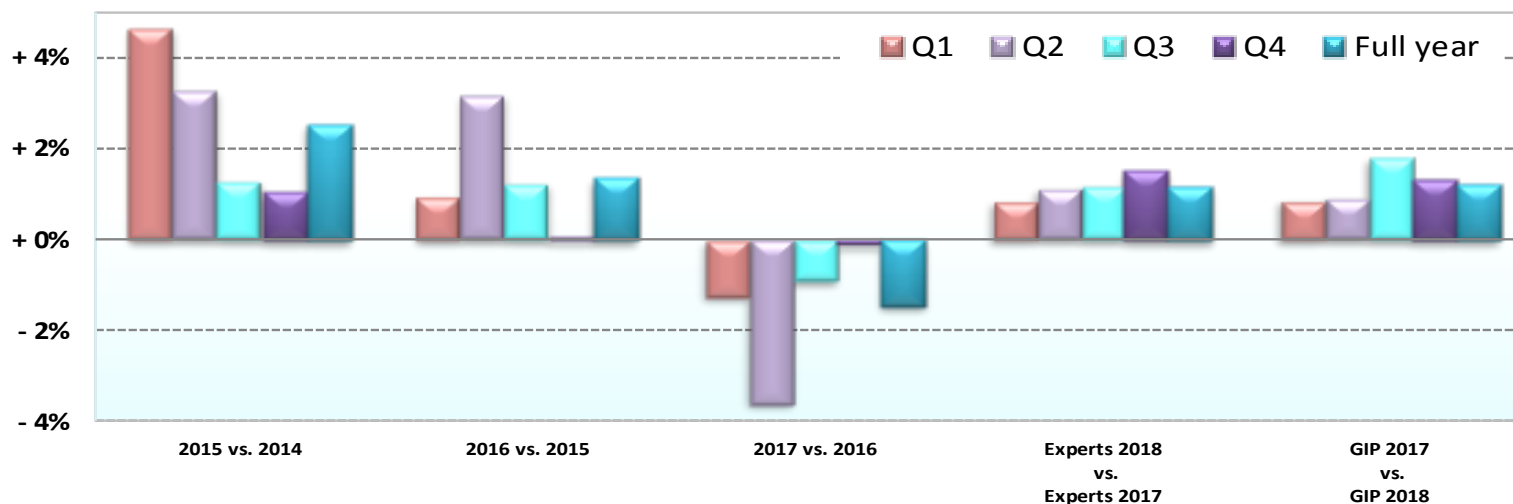
% Var
2017
2016

2015 2016 2017

	2015	2016	2017	% Var 2017 2016	2015	2016	2017	% Var 2017 2016	2015	2016	2017	% Var 2017 2016	2015	2016	2017	% Var 2017 2016
BE	1,467	1,490	1,342	- 10.0%	1,251	1,349	1,267	- 6.1%	204	218	272	+ 24.8%	5	4	3	- 27.9%
BG	112	132	125	- 5.5%	113	126	122	- 3.7%	30	20	9	- 54.9%	2	1	1	- 6.5%
CZ	299	291	264	- 9.4%	244	224	240	+ 7.0%	77	57	68	+ 17.7%	2	2	2	+ 18.3%
DK	2,518	2,325	2,402	+ 3.3%	629	581	600	+ 3.3%	7	6	7	+ 16.7%	11	11	11	+ 0.0%
DE	5,584	5,561	5,500	- 1.1%	5,305	5,465	5,516	+ 0.9%	1,110	1,229	1,224	- 0.4%	25	25	24	- 3.0%
EE	62	50	60	+ 20.8%	38	38	32	- 16.7%	6	7	16	+ 127.5%	1	1	0	- 40.0%
EL	154	131	130	- 0.8%	131	109	111	+ 1.8%	24	30	22	- 26.7%	11	8	10	+ 25.0%
ES	4,882	5,146	4,965	- 3.5%	5,039	5,577	5,579	+ 0.0%	1,438	1,563	1,582	+ 1.2%	38	33	32	- 2.6%
FR	2,492	2,418	2,401	- 0.7%	2,300	2,135	2,259	+ 5.8%	596	618	655	+ 6.0%	10	9	8	- 11.1%
HR	206	157	145	- 7.6%	126	149	153	+ 2.7%	187	177	184	+ 4.0%	4	3	3	+ 0.0%
IE	290	286	323	+ 13.0%	230	250	266	+ 6.3%	9	9	10	+ 11.8%	1	1	1	+ 0.0%
IT	1,314	1,211	1,254	+ 3.6%	1,472	1,452	1,464	+ 0.9%	2,237	2,251	2,253	+ 0.1%	28	29	29	+ 1.2%
CY	57	63	62	- 2.6%	46	57	55	- 3.3%	0	1	0	- 51.1%	0	0	0	- 36.4%
LV	95	77	62	- 18.5%	41	46	57	+ 25.5%	6	8	5	- 32.8%	1	1	1	+ 17.5%
LT	179	168	147	- 12.4%	105	100	86	- 14.5%	46	48	42	- 10.9%	1	1	1	+ 0.0%
LU	18	17	19	+ 15.8%	16	18	13	- 28.3%	5	7	8	+ 17.9%	0	0	0	+ 14.3%
HU	563	556	562	+ 1.1%	532	518	491	- 5.2%	320	283	309	+ 9.2%	4	4	4	+ 0.0%
MT	10	9	8	- 8.3%	7	7	4	- 36.8%	1	1	1	- 19.8%	0	0	0	+ 0.0%
NL	1,879	1,827	1,787	- 2.2%	1,781	1,711	1,618	- 5.4%	563	602	563	- 6.5%	4	3	9	+ 200.0%
AT	560	566	554	- 2.1%	484	458	488	+ 6.6%	125	124	130	+ 4.3%	5	4	4	+ 2.0%
PL	2,028	2,076	2,318	+ 11.7%	1,753	1,789	1,954	+ 9.3%	434	407	486	+ 19.4%	16	17	17	+ 1.2%
PT	404	377	372	- 1.5%	298	303	304	+ 0.1%	32	38	30	- 21.7%	5	5	6	+ 18.4%
RO	837	837	792	- 5.4%	986	955	897	- 6.1%	786	746	700	- 6.2%	6	6	6	- 4.9%
SI	39	36	34	- 5.6%	37	40	38	- 4.8%	63	62	59	- 4.9%	1	1	1	- 5.6%
SK	109	99	94	- 5.0%	121	83	98	+ 17.9%	28	21	23	+ 8.1%	1	1	1	+ 29.6%
FI	231	226	232	+ 2.7%	205	206	171	- 16.7%	65	58	44	- 24.3%	2	2	1	- 12.5%
SE	238	254	231	- 8.8%	199	182	218	+ 20.3%	83	99	80	- 18.9%	3	2	2	- 37.5%
UK	972	996	1,009	+ 1.3%	622	636	641	+ 0.8%	53	53	54	+ 1.9%	13	14	13	- 7.1%
EU	27,600	27,382	27,195	- 0.7%	24,112	24,563	24,741	+ 0.7%	8,535	8,741	8,833	+ 1.1%	200	187	191	+ 1.9%



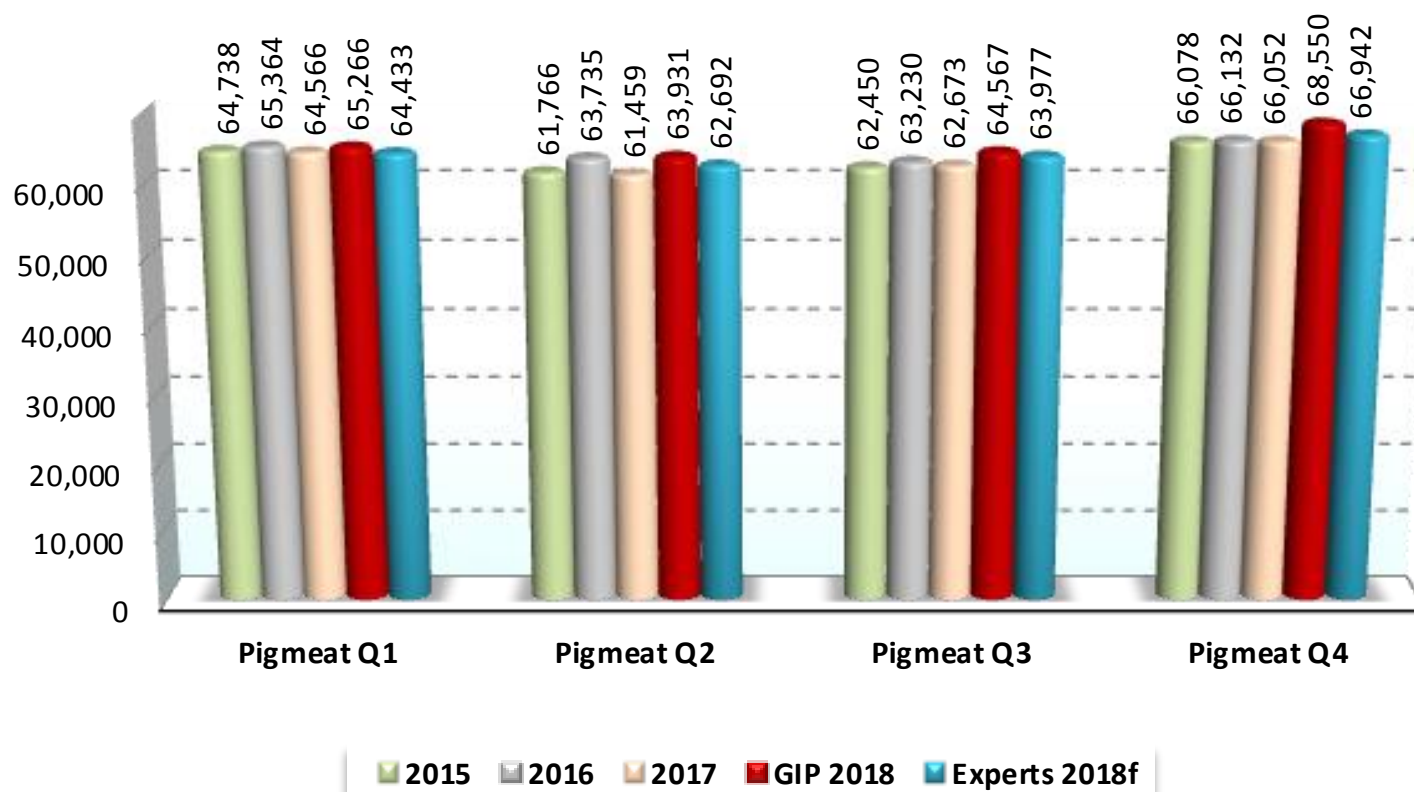
Change in EU pigmeat slaughter (2018 forecast based on GIP and experts estimations) ('000 heads)



	Real Slaughter			Experts 2018 vs. Experts 2017	GIP 2017 vs. GIP 2018
	2015 vs. 2014	2016 vs. 2015	2017 vs. 2016		
Q1	+ 4.6%	+ 1.0%	- 1.2%	+ 0.9%	+ 0.9%
Q2	+ 3.3%	+ 3.2%	- 3.6%	+ 1.1%	+ 0.9%
Q3	+ 1.3%	+ 1.2%	- 0.9%	+ 1.2%	+ 1.8%
Q4	+ 1.0%	+ 0.1%	- 0.1%	+ 1.5%	+ 1.3%
Full year	↑ + 2.5%	↗ + 1.3%	↓ - 1.4%	↗ + 1.2%	↗ + 1.2%

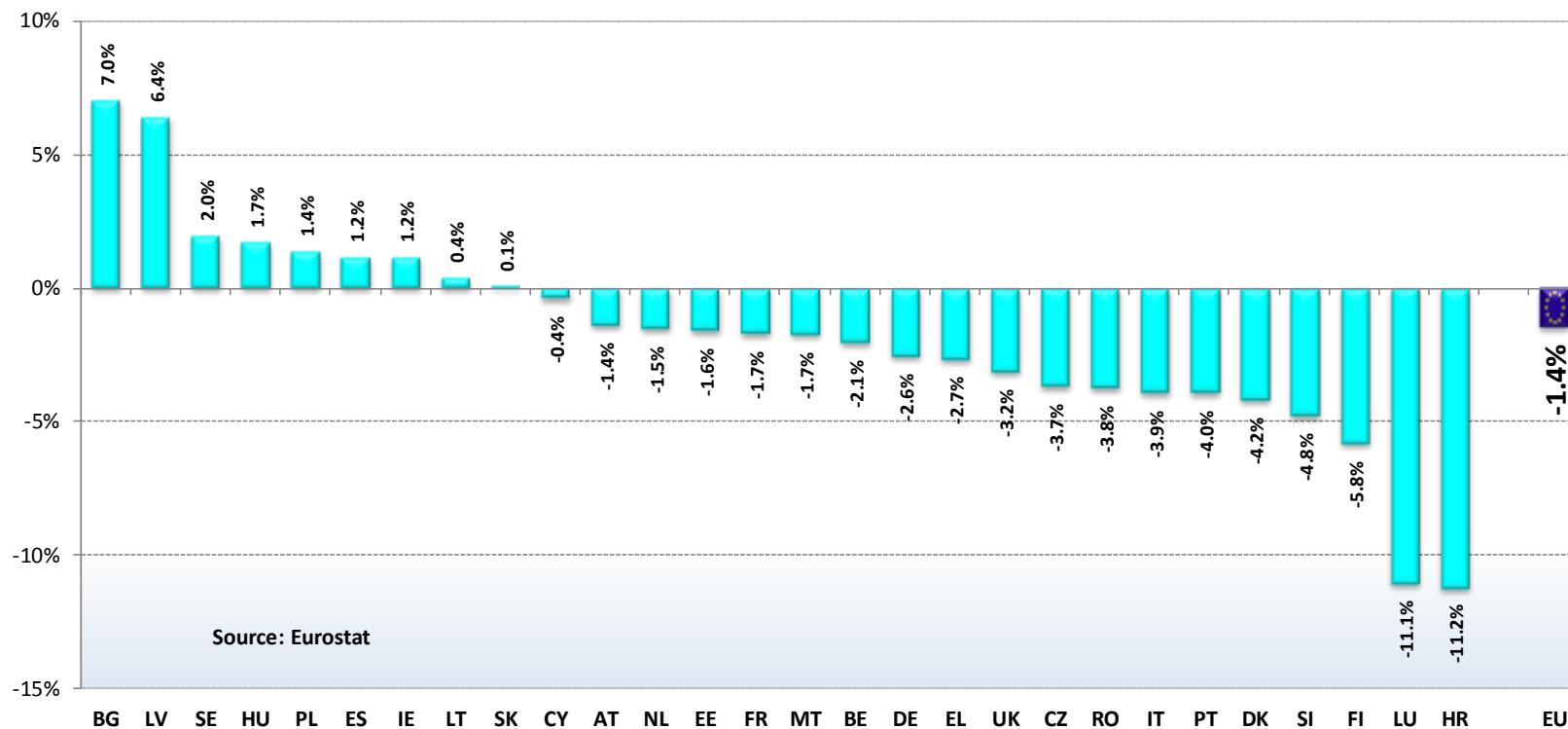


EU pigmeat slaughter in 2015-2017, GIP and expert estimations for 2018 ('000 heads)



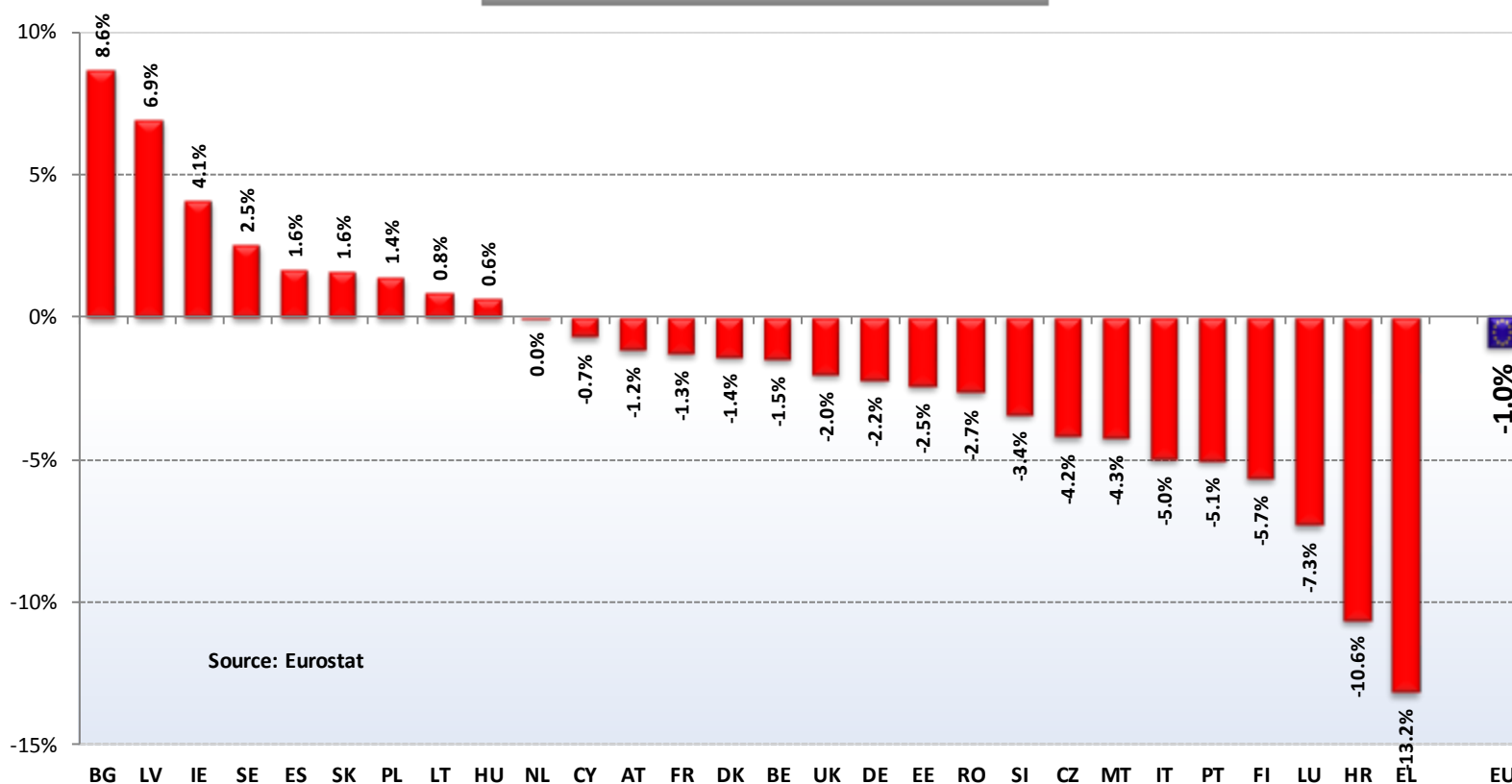


Change in Pig Slaughter ('000 Heads) 2017/2016 (up to December)

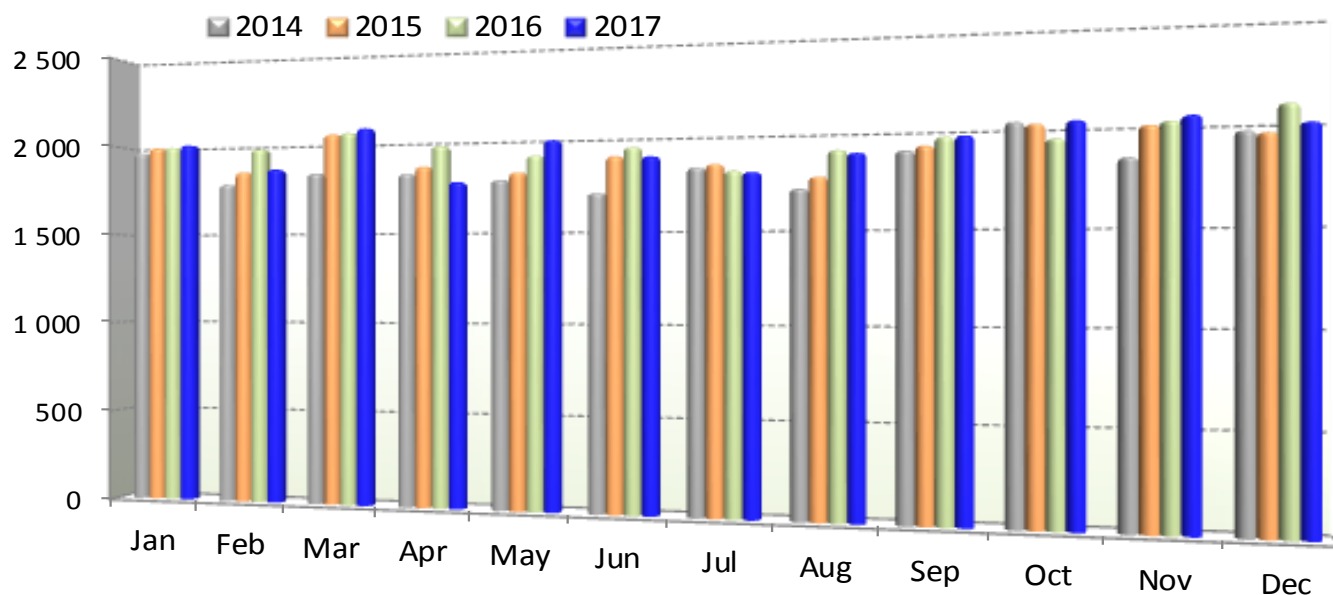




**Change in Pig Slaughter ('000 tonnes)
2017/2016 (up to December)**



Pig Production (E28 Slaughtering) - Tonnes



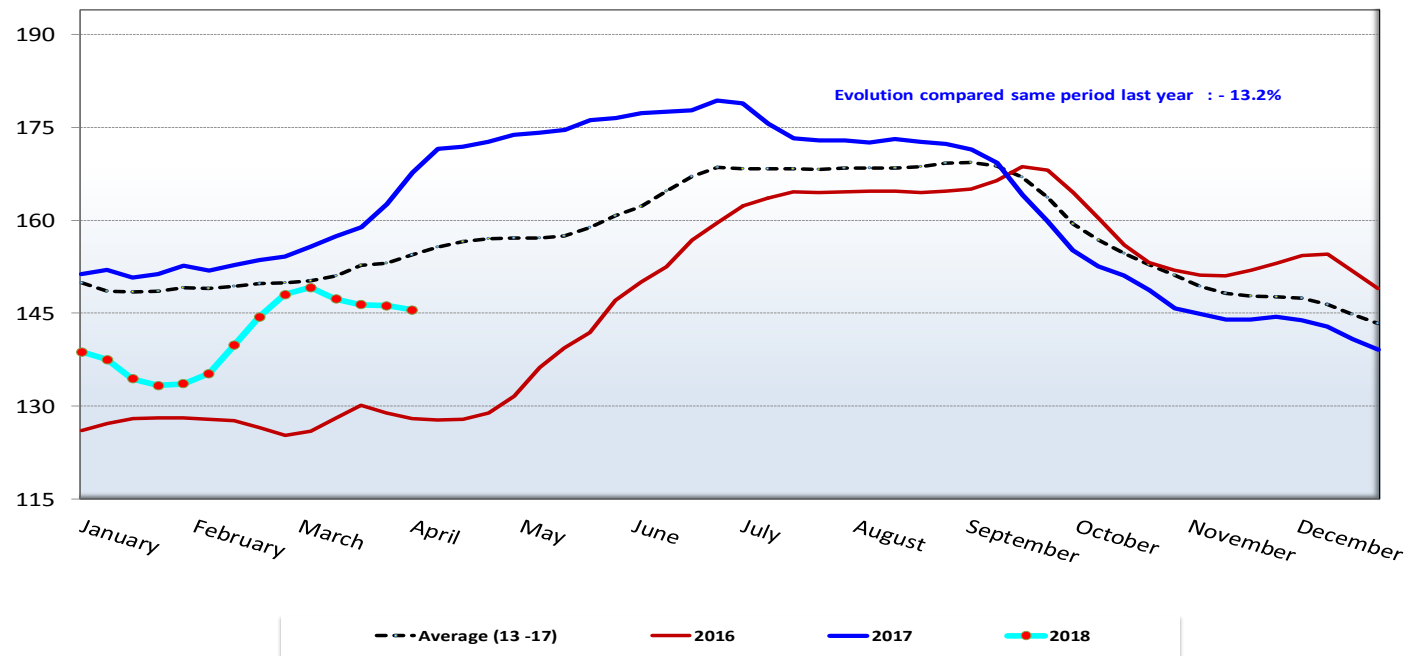
Source - Estat-Newcronos



EU Prices	EU Prices	14		Evolution since last week	Evolution since last month	Evolution since last year
	Average (S-E)	145.5	€/100 kg carcass weight	- 0.5%	- 2.4%	- 13.2%
	Class S	146.1		- 0.6%	- 2.0%	- 13.3%
	Class E	144.5		- 0.3%	- 3.1%	- 13.2%
	Piglet	52.1	€/head	+ 0.5%	+ 2.2%	- 10.5%

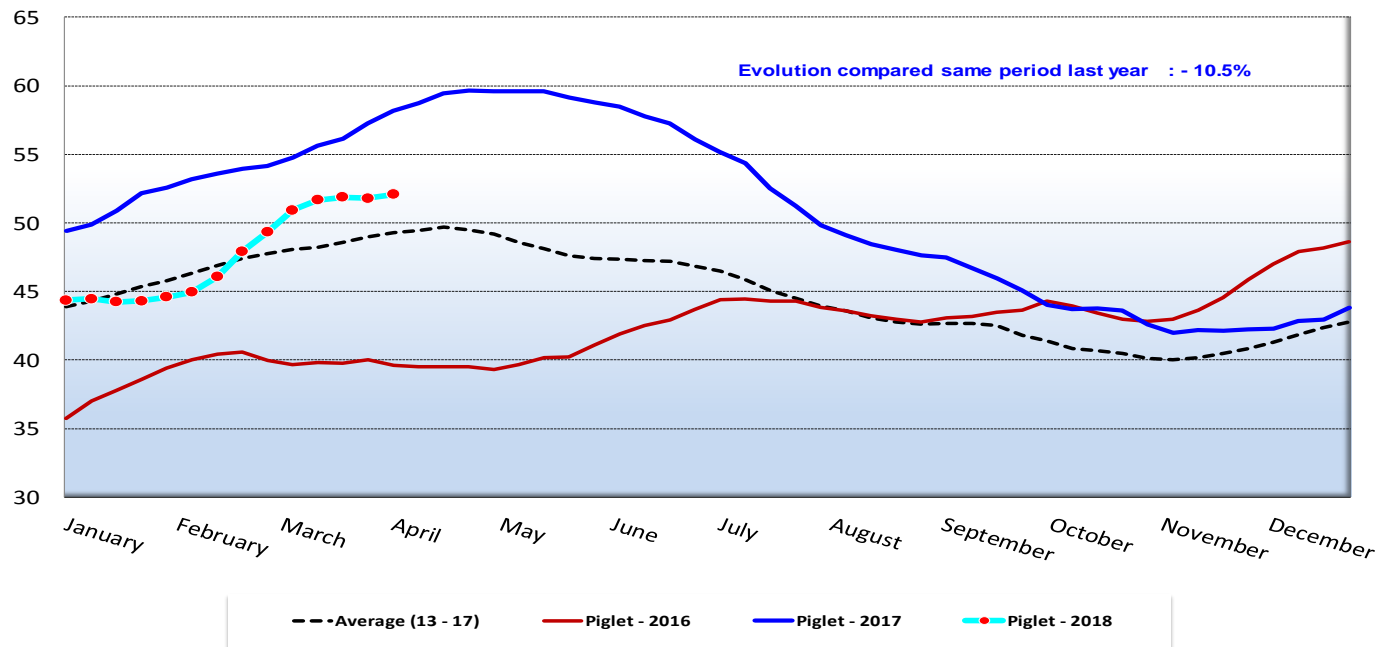
EU evolution of the EU pig carcass prices (average class E & S)
(€/ 100kg/cw)

Week 14 latest price ==> 145.52 EUR/100 kg/cw

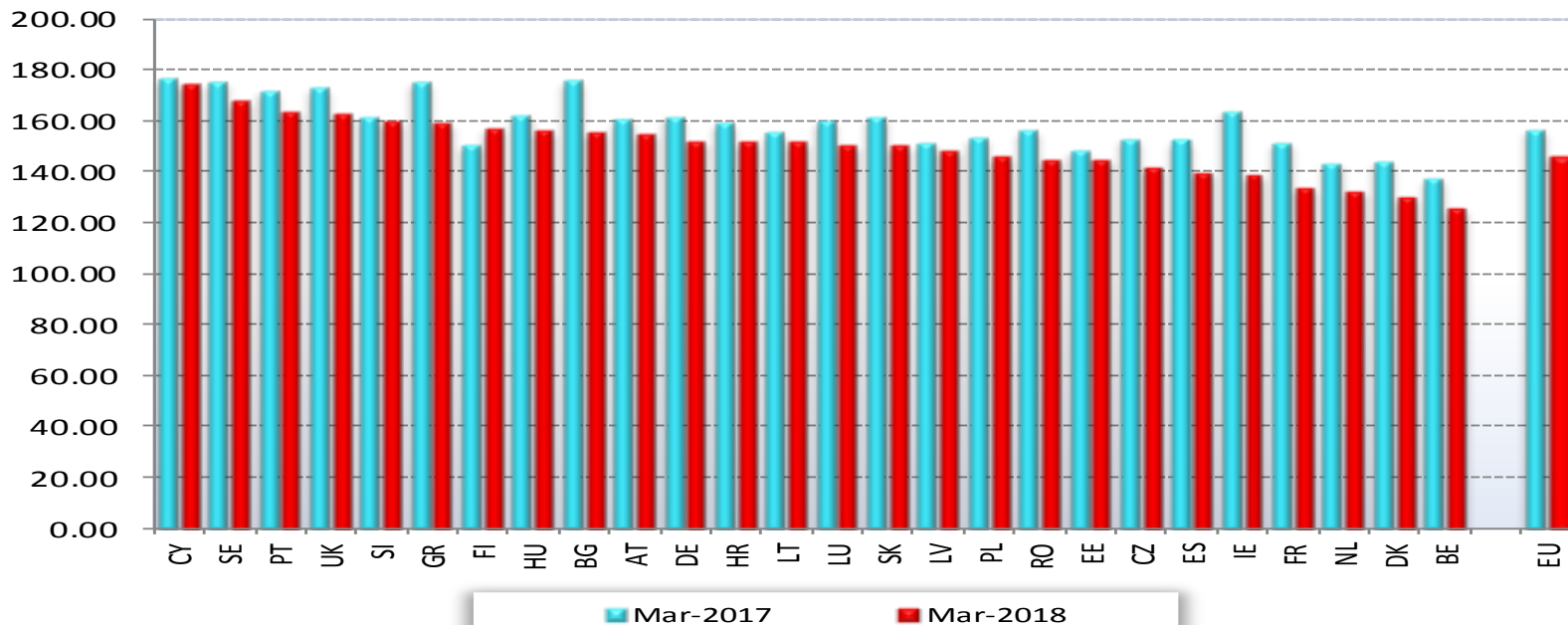


EU evolution of the EU average piglet prices (€/head)

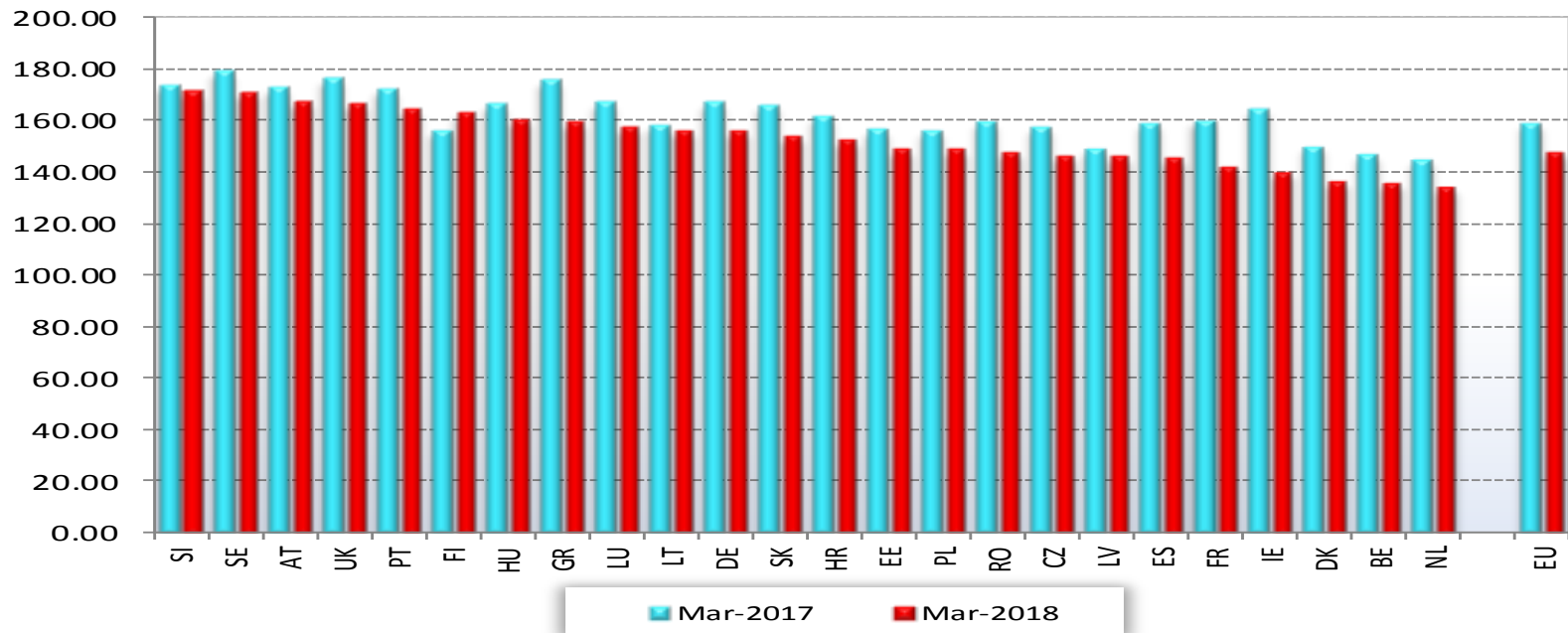
Week 14 latest price ==> 52.07 EUR/head



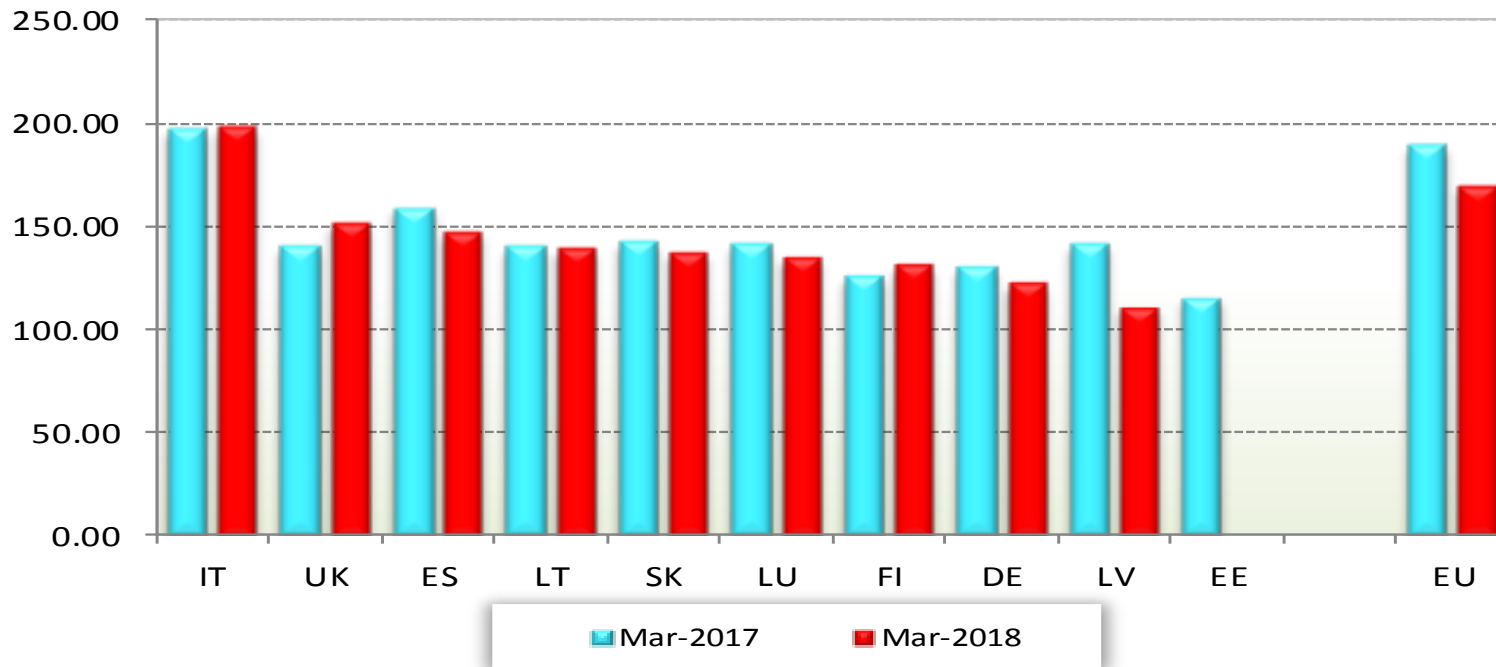
Class E (monthly prices) (€/100 kg)



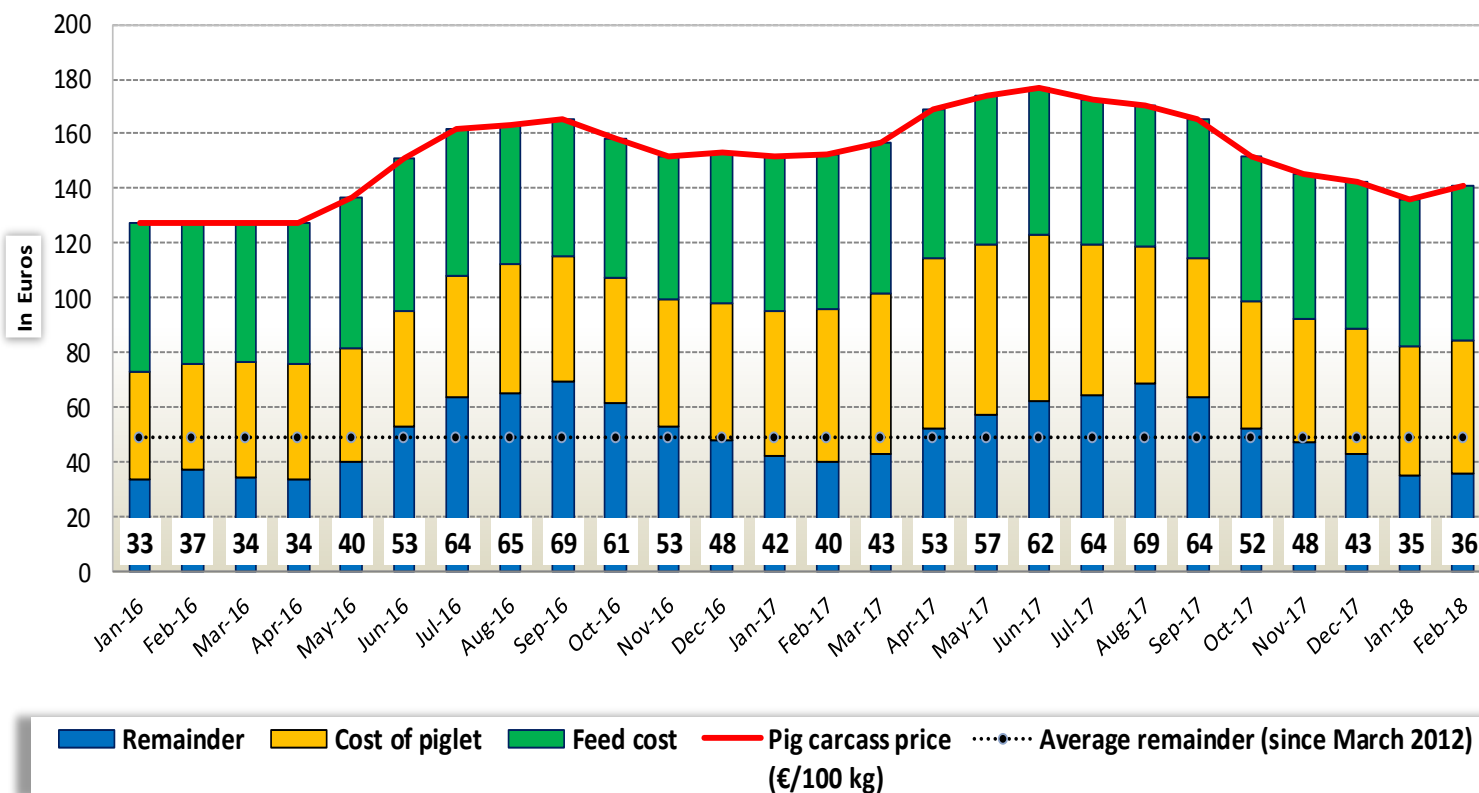
Class S (monthly prices) (€/100 kg)



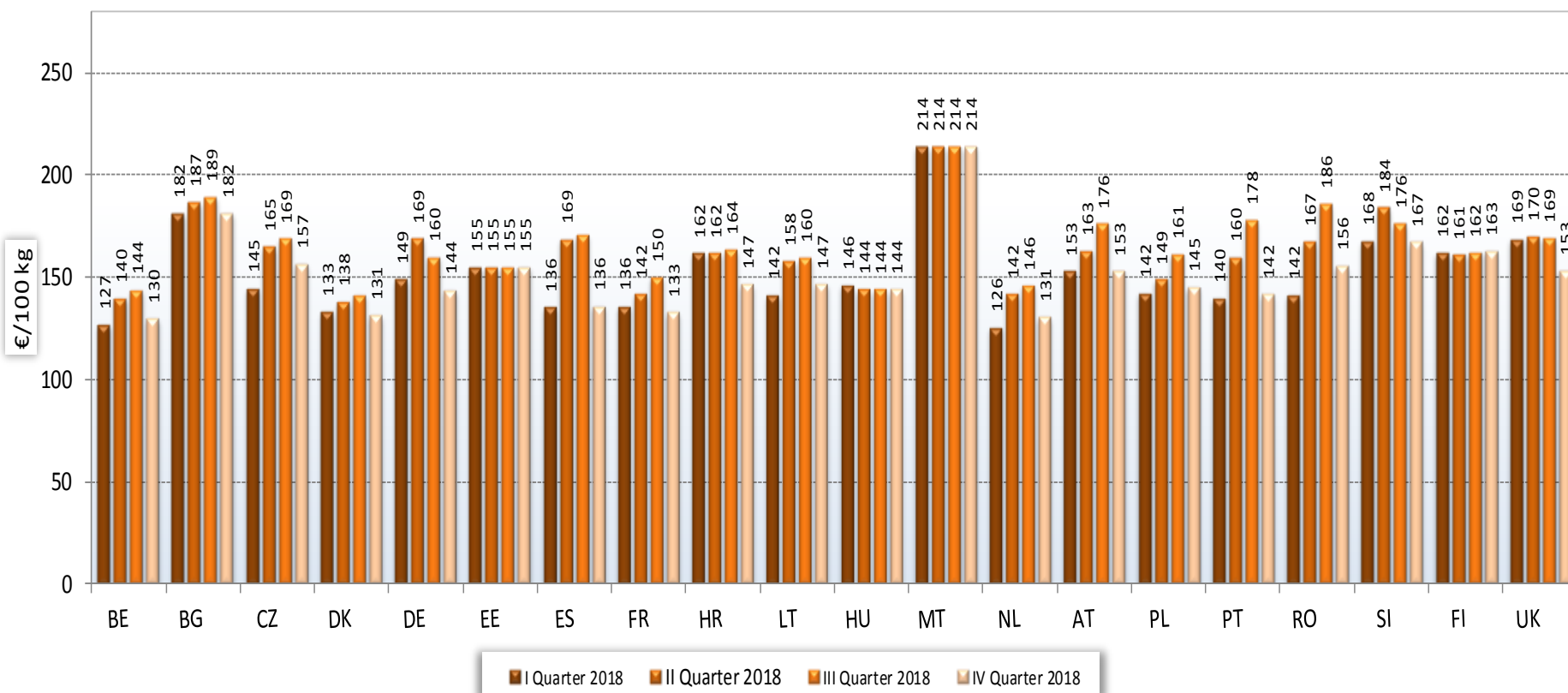
Class R (monthly prices) (€/100 kg)



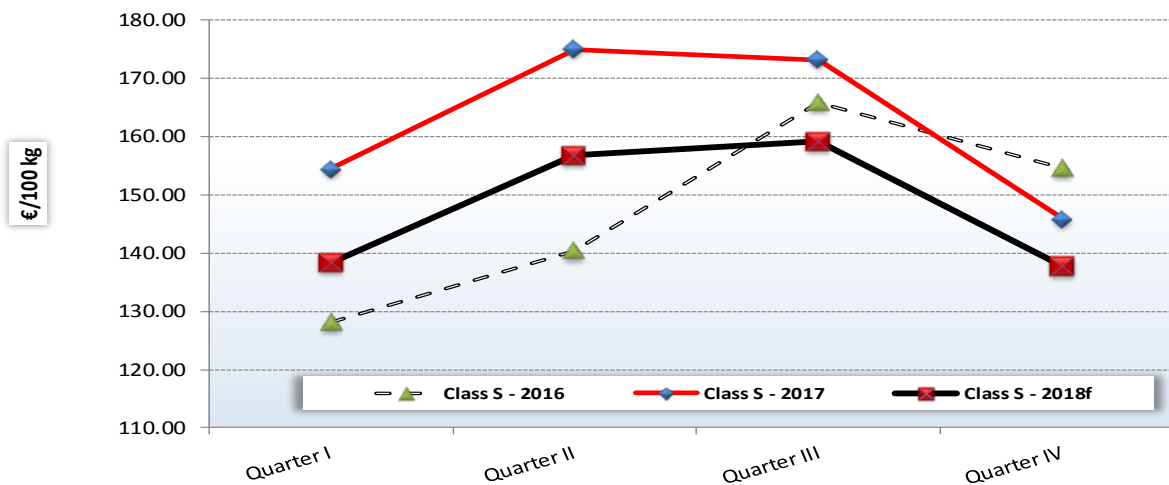
Remainder for pig fattening



Forecast price evolution **Class S** (By quarter)

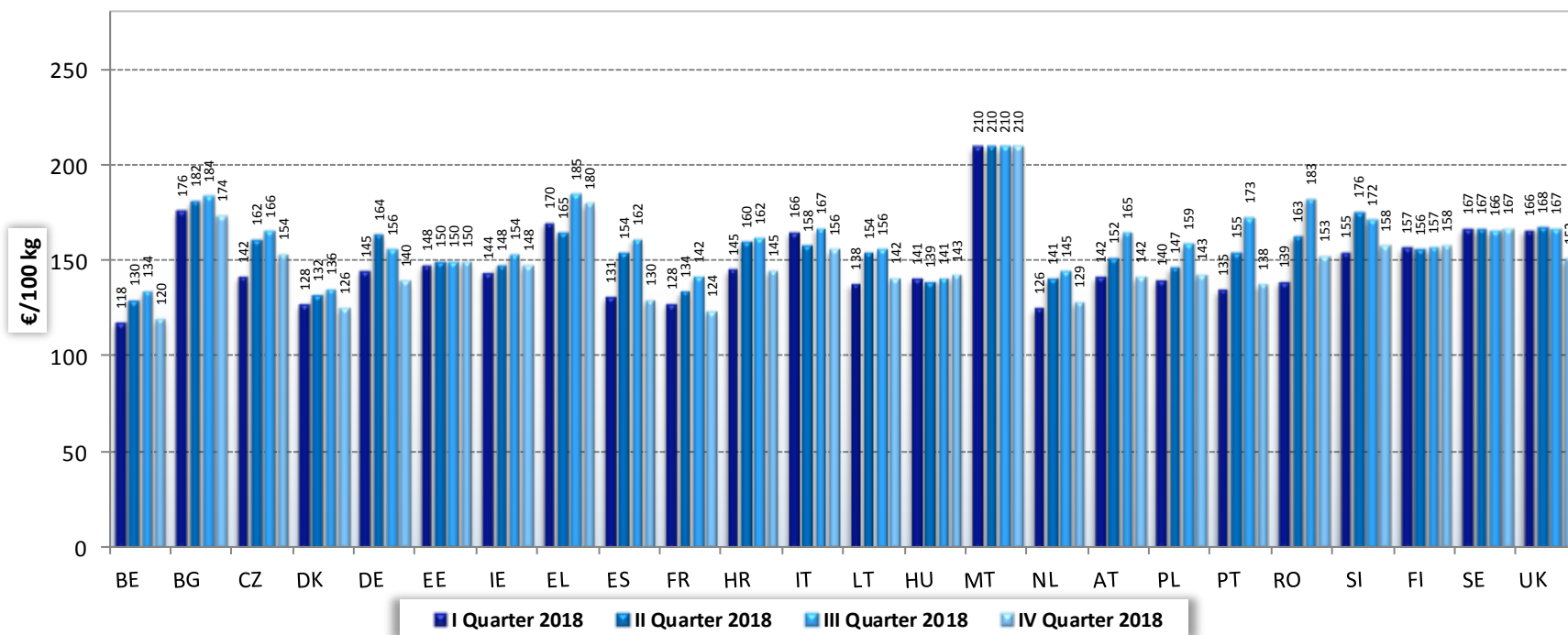


Development of the EU average price
for pig carcasses - **Class S**

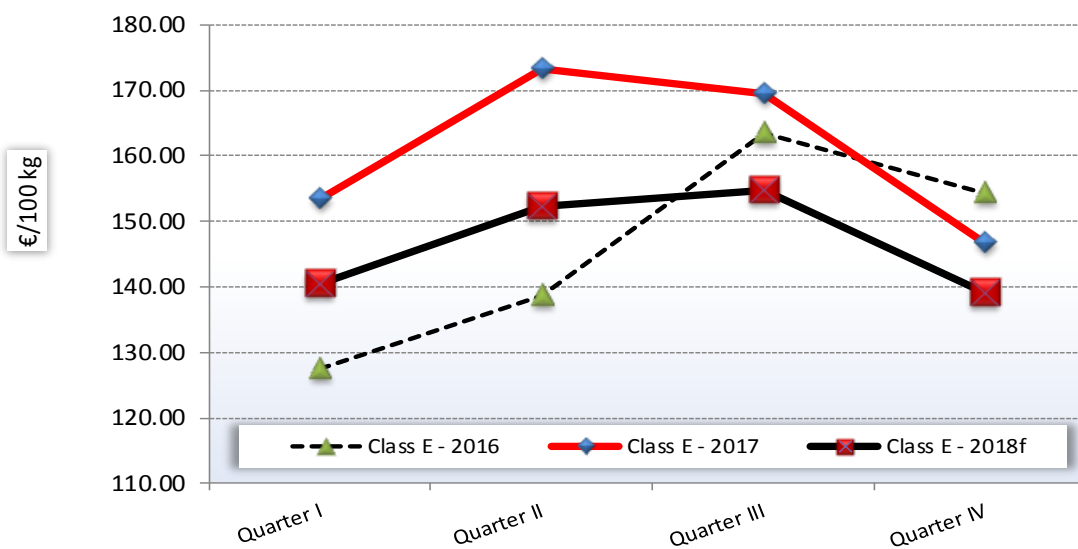


	Quarter I	Quarter II	Quarter III	Quarter IV
Class S - 2016	128.13	140.26	165.72	154.48
Class S - 2017	154.36	174.96	173.14	145.77
Class S - 2018f	138.36	156.65	159.10	137.76

Forecast price evolution **Class E** (By quarter)

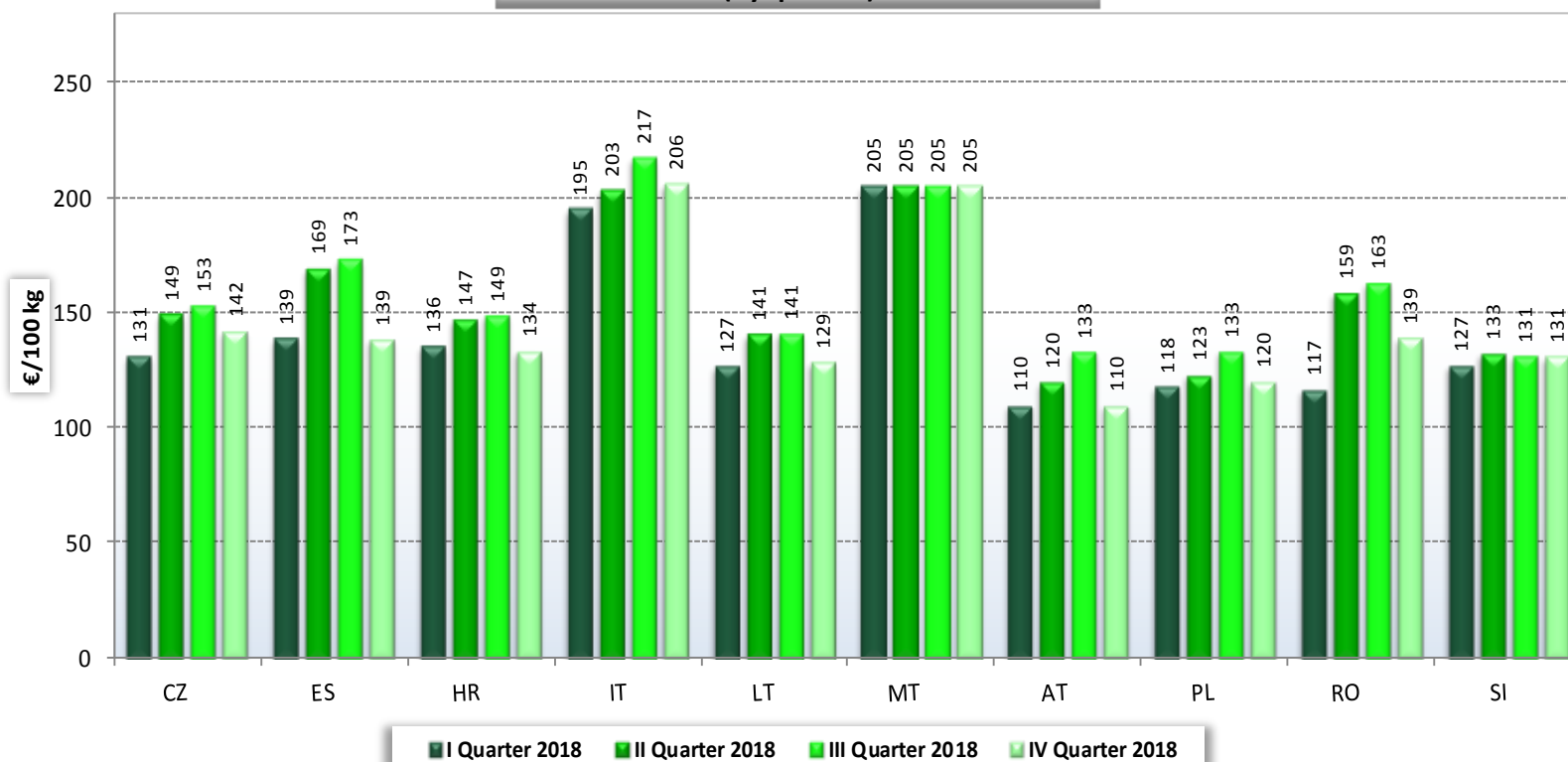


**Development of the EU average price
for pig carcasses - Class E**

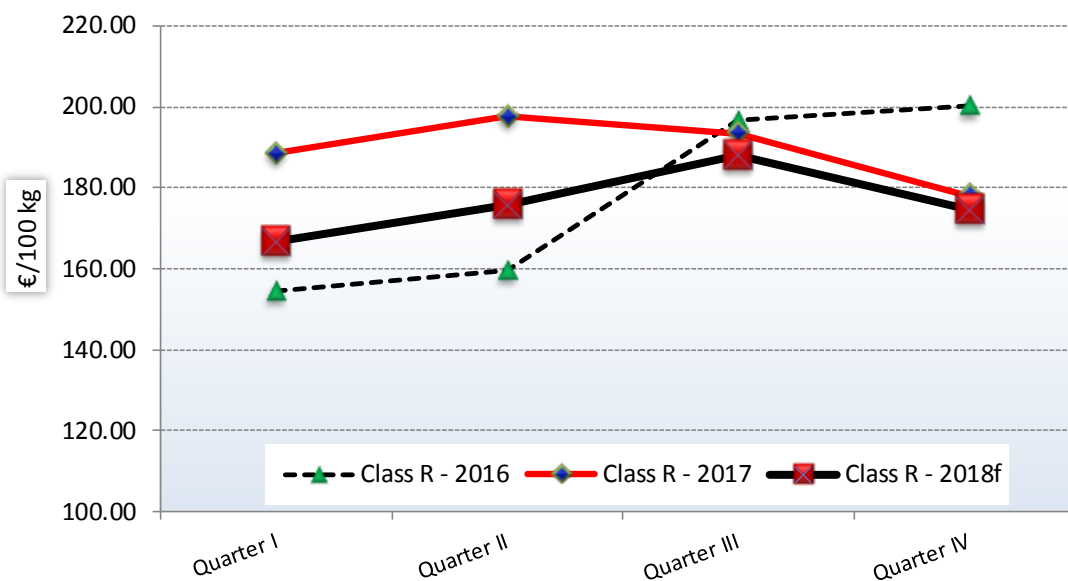


	Quarter I	Quarter II	Quarter III	Quarter IV
Class E - 2016	127.47	138.61	163.55	154.22
Class E - 2017	153.51	173.19	169.40	146.61
Class E - 2018f	140.36	152.19	154.77	139.05

Forecast price evolution **Class R** (By quarter)



Development of the EU average price for pig carcasses - **Class R**

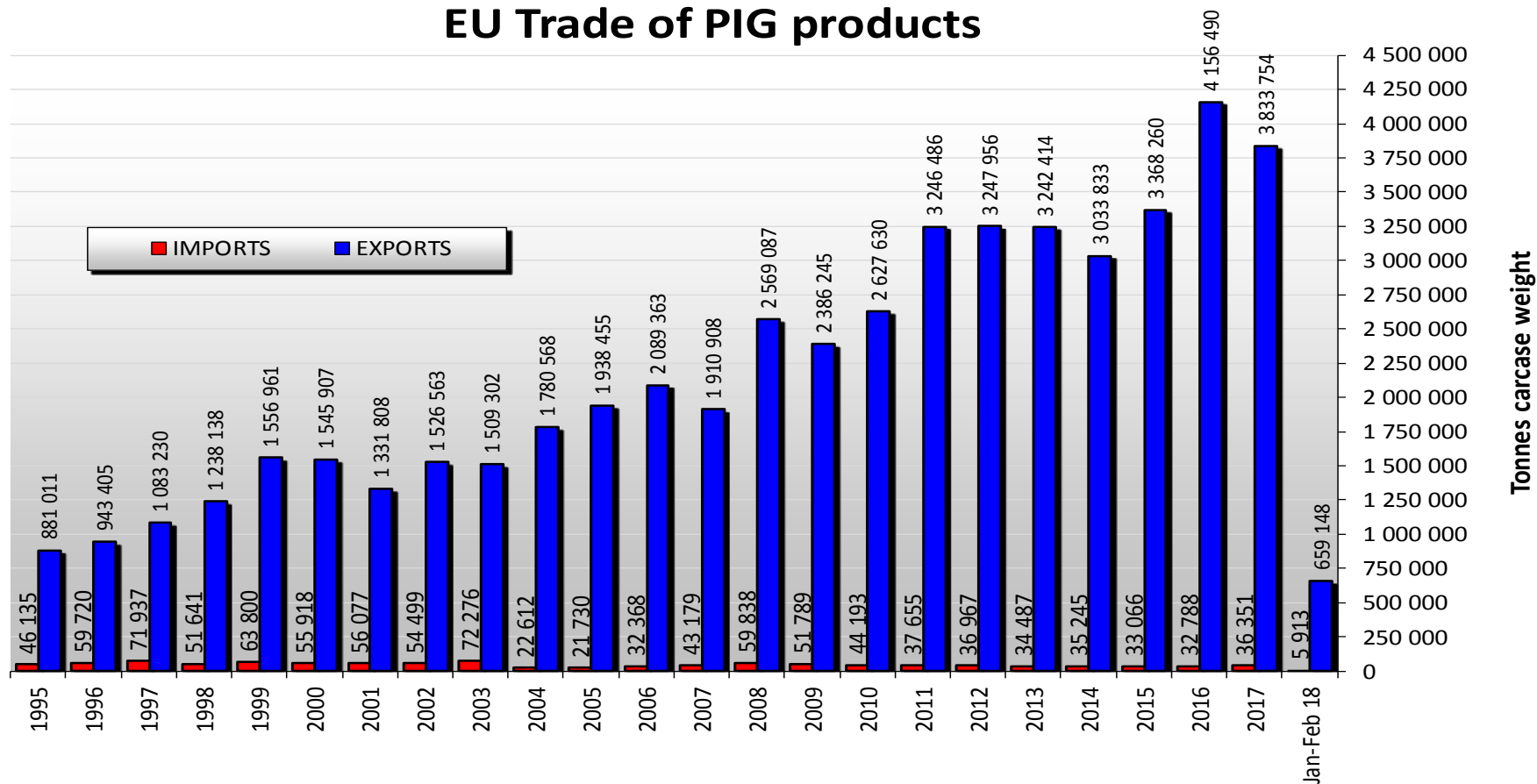


	Quarter I	Quarter II	Quarter III	Quarter IV
Class R - 2016	154.53	159.55	196.71	200.29
Class R - 2017	188.39	197.60	193.31	178.10
Class R - 2018f	166.79	175.86	187.91	174.69



EU trade of PIG products

EU Trade of PIG products



EU imports of selected PIG products

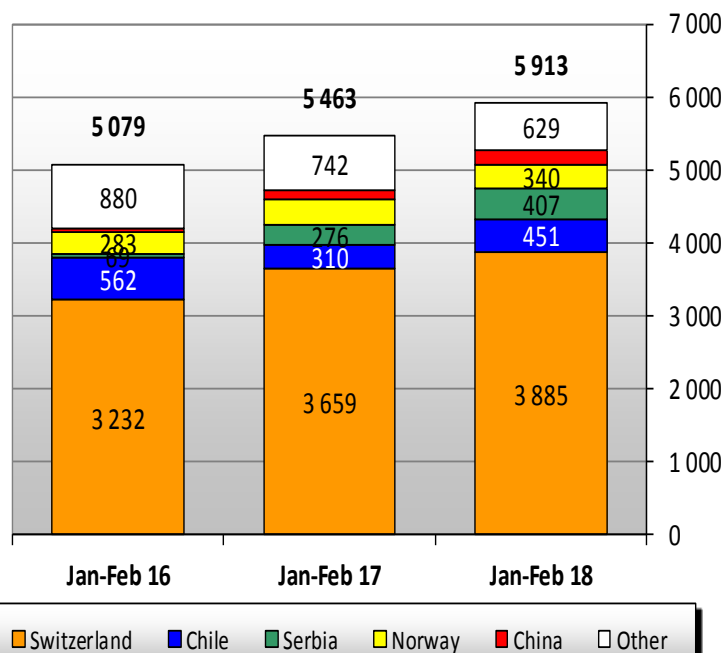
Trade figures (COMEXT – tonnes carcass weight)

IMPORT

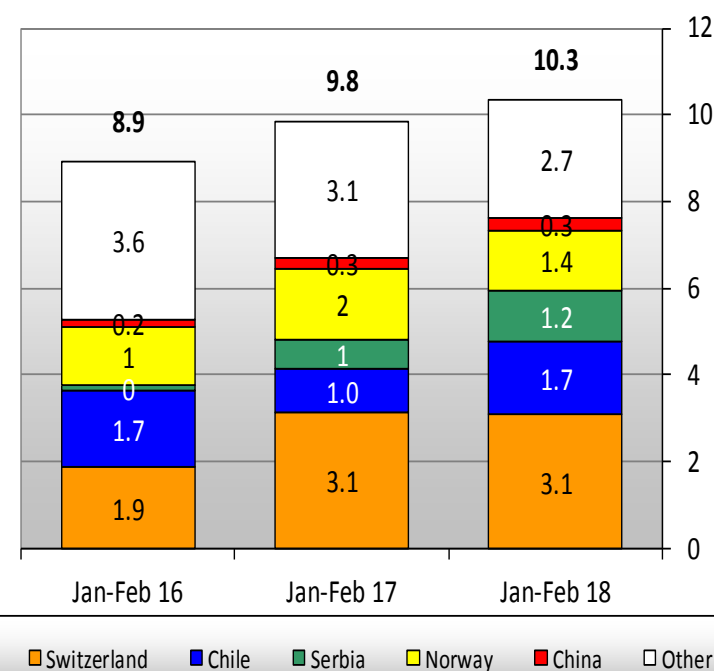
	2014		2015		2016		2017		Jan-Feb 18		Compared to Jan- Feb 17
	tonnes	%	tonnes	%	tonnes	%	tonnes	%	tonnes	%	
Switzerland	18 207	52%	20 225	61%	22 257	68%	22 922	63%	3 885	66%	6%
Chile	3 416	10%	2 896	9%	2 958	9%	2 434	7%	451	8%	46%
Serbia	3 662	10%	1 819	5%	614	2%	2 694	7%	407	7%	48%
Norway	3 192	9%	2 315	7%	1 989	6%	2 287	6%	340	6%	-1%
USA	1 498	4%	1 769	5%	1 711	5%	1 707	5%	230	4%	8%
China	917	3%	380	1%	250	1%	1 315	4%	202	3%	52%
Other	4 353	12%	3 663	11%	3 010	9%	2 994	8%	399	7%	
Extra-EU	35 245		33 066		32 788		36 351		5 913		
% change			- 6%		- 1%		+ 11%		+ 8.2%		

EU imports of selected PIG products Trade figures (COMEXT – tonnes carcass weight)

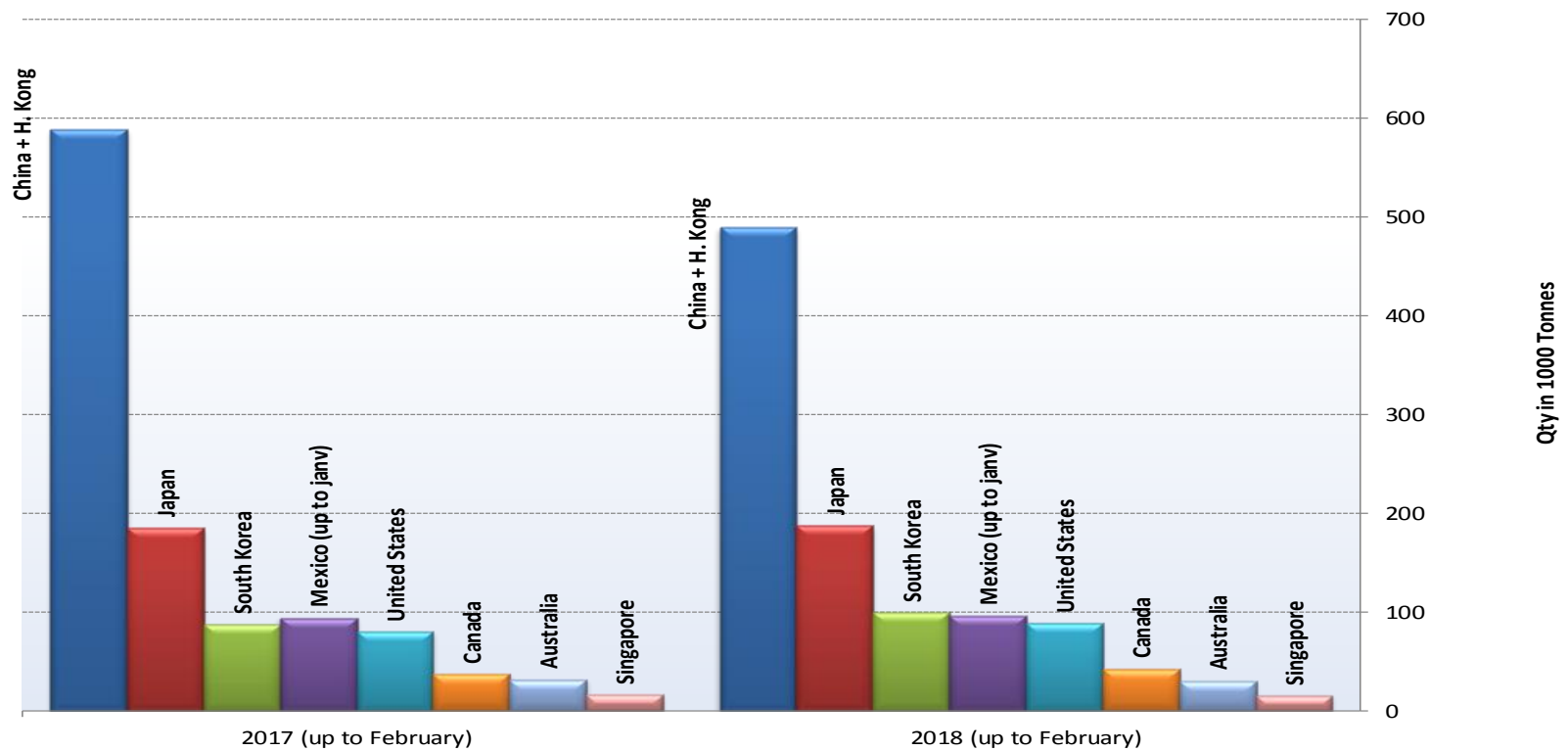
IMPORTS of PIG Meat into EU-28 (Tonnes c. weight)



IMPORTS of PIG Meat into EU-28 (Millions EUR)



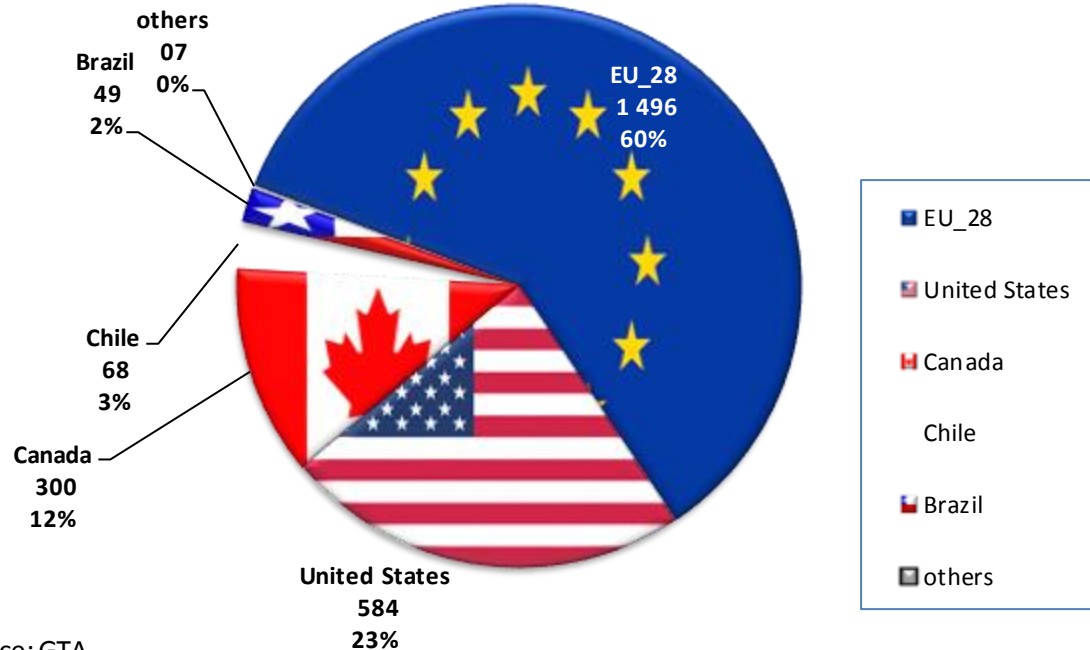
Main Importers of PIG Products (up to February)



Source : GTA

Excl. Live animals

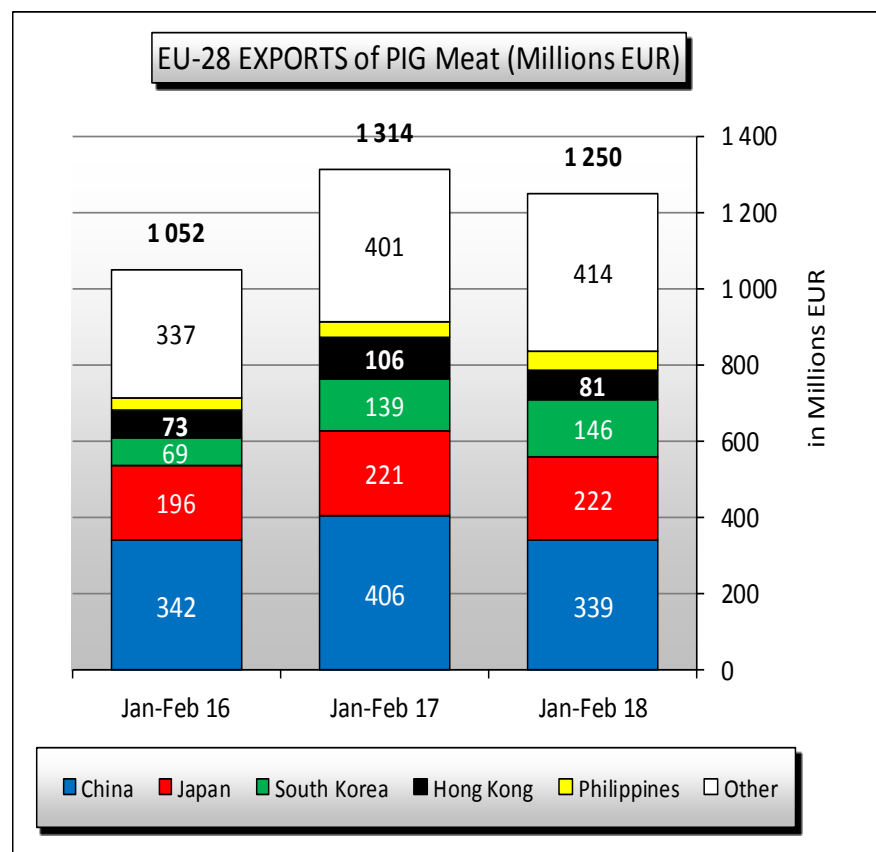
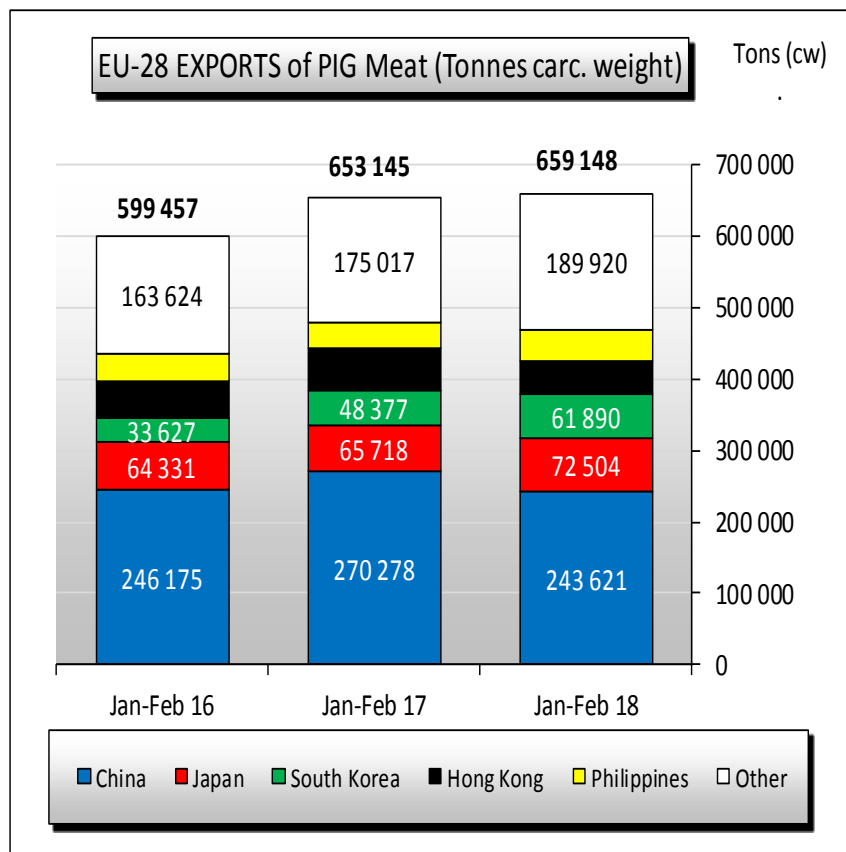
China pork imports, major exporting country shares, 2017 (^{'000 tonnes})

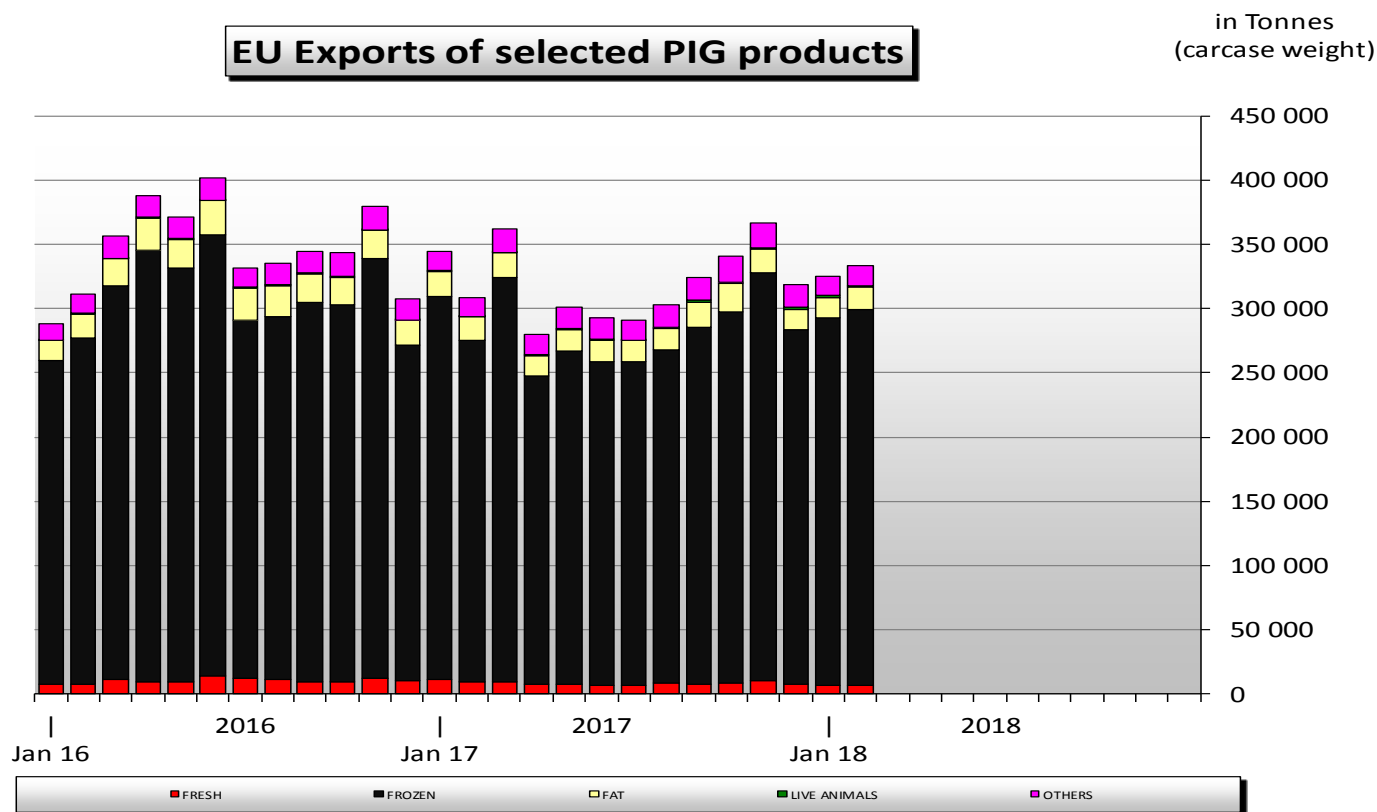


EU exports of selected PIG products: Trade figures (COMEXT – tonnes carcass weight)

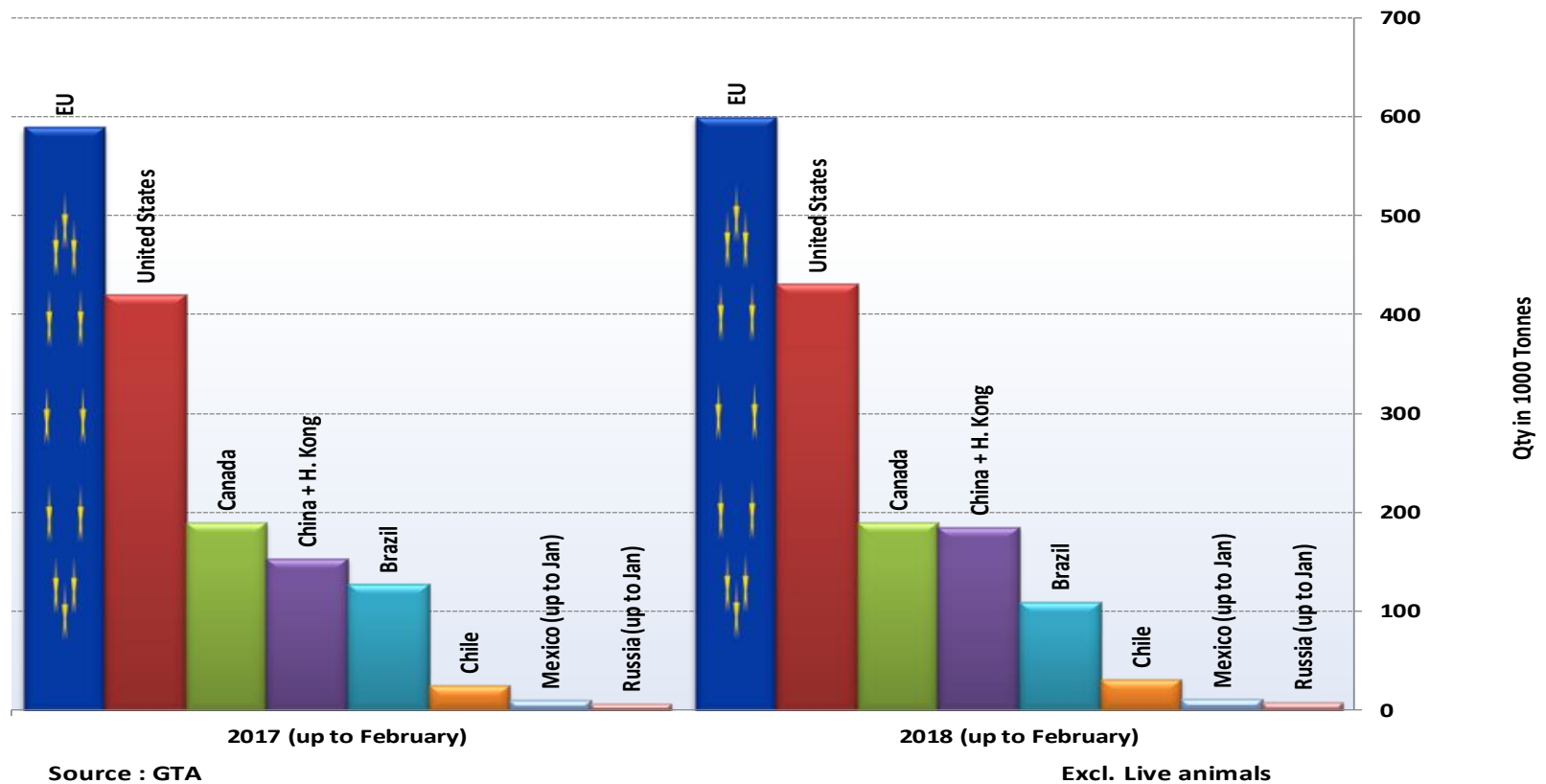
	2014		2015		2016		2017		Jan-Feb 18		Compared to
	tonnes	%	tonnes	%	tonnes	%	tonnes	%	tonnes	%	Jan-Feb 17
China	717,033	23.6%	1,141,325	33.9%	1,866,355	44.9%	1,398,470	36.5%	243,621	37.0%	- 10%
Japan	347,721	11.5%	364,746	10.8%	405,335	9.8%	425,910	11.1%	72,504	11.0%	+ 10%
South Korea	227,825	7.5%	241,569	7.2%	260,726	6.3%	274,966	7.2%	61,890	9.4%	+ 28%
Hong Kong	408,183	13.5%	292,391	8.7%	362,492	8.7%	381,013	9.9%	46,329	7.0%	- 20%
Philippines	202,522	6.7%	191,876	5.7%	216,022	5.2%	250,213	6.5%	44,884	6.8%	+ 24%
USA	90,985	3.0%	105,123	3.1%	116,806	2.8%	155,527	4.1%	29,556	4.5%	+ 30%
Australia	73,156	2.4%	102,645	3.0%	101,198	2.4%	95,308	2.5%	18,868	2.9%	- 6%
Ukraine	106,780	3.5%	96,631	2.9%	75,674	1.8%	88,106	2.3%	14,429	2.2%	+ 40%
Taiwan	52,970	1.7%	53,701	1.6%	47,865	1.2%	64,392	1.7%	12,296	1.9%	+ 26%
Serbia	62,905	2.1%	47,488	1.4%	41,128	1.0%	55,052	1.4%	12,193	1.8%	+ 75%
Ivory Coast	39,773	1.3%	49,766	1.5%	36,385	0.9%	41,433	1.1%	8,087	1.2%	+ 15%
Vietnam	16,056	0.5%	38,290	1.1%	53,483	1.3%	41,549	1.1%	7,833	1.2%	- 18%
Other	687,924	22.7%	642,711	19.1%	573,021	13.8%	561,815	14.7%	86,659	13.1%	
Extra-EU	3,033,833		3,368,260		4,156,490		3,833,754		659,148		
% change			+ 11%		+ 23%		- 8%		+ 0.9%		

EU exports of selected PIG products Trade figures (COMEXT – tonnes carcass weight)

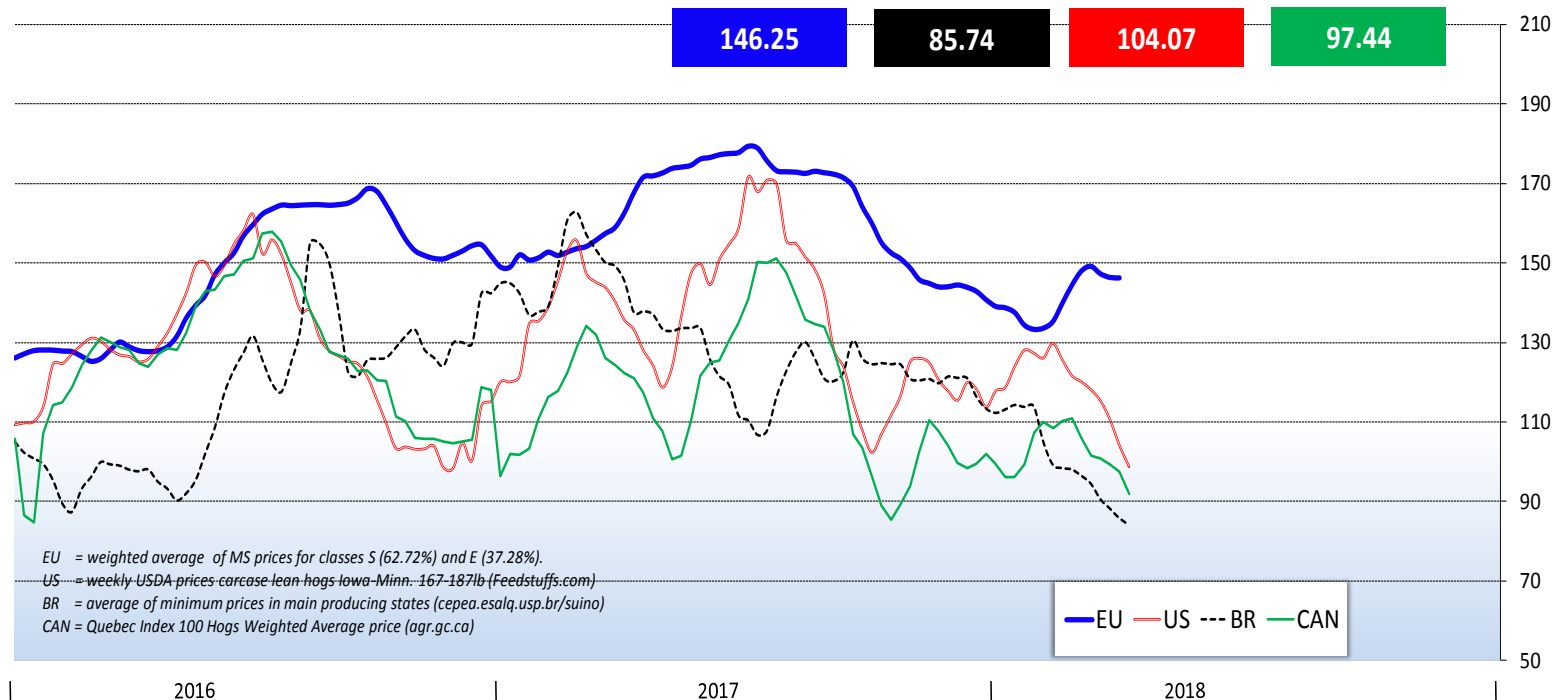




Main Exporters of PIG Products (up to February)



World weekly average Pig prices 2016 - 2018 in Euro/ 100kg carcase (EU, Brazil, Canada and USA)

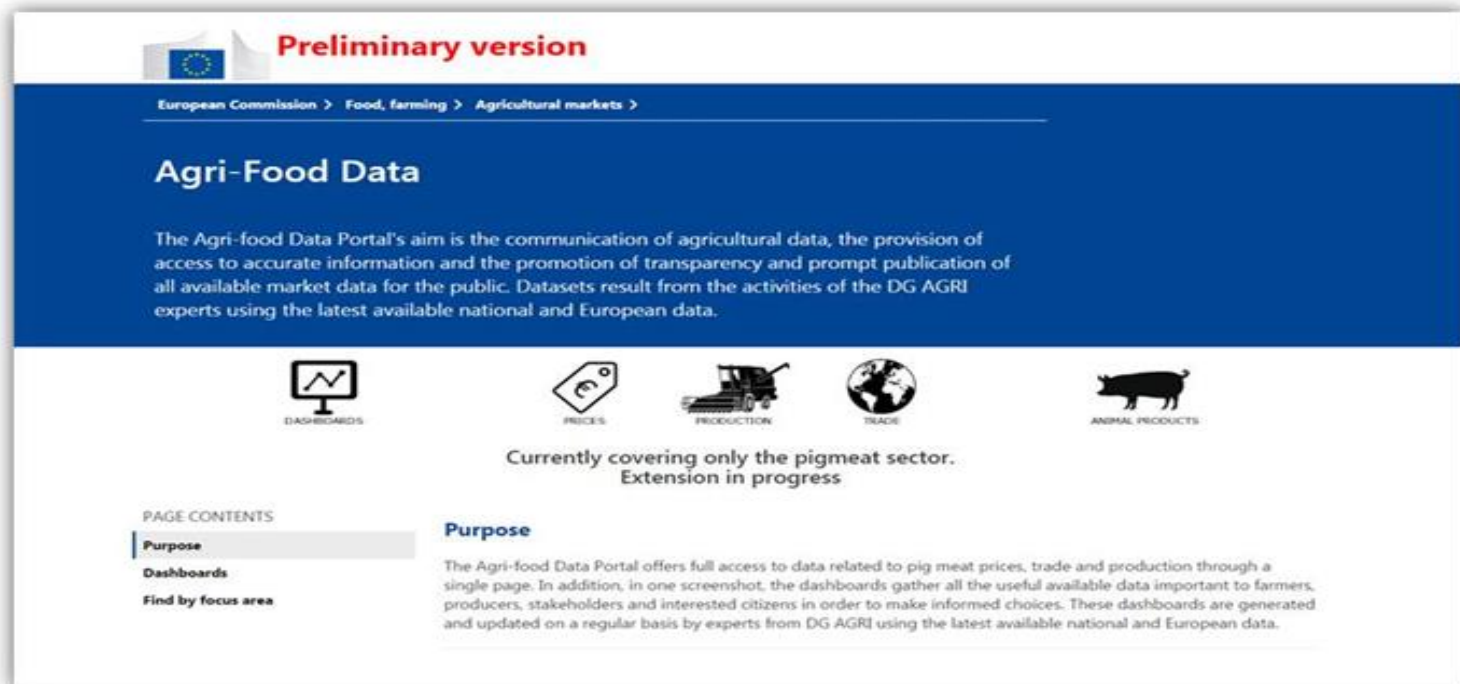




Follow market updates via the Meat Market Observatory

http://ec.europa.eu/agriculture/market-observatory/meat/index_en.htm > Pigmeat

Agri-Food Data portal



<http://agridata.ec.europa.eu/>