



# BEEF & VEAL MARKET SITUATION



Meat market observatory 16 October 2023

# LIVESTOCK

JUNE SURVEY

# EU EVOLUTION TOTAL BOVINE

May/Jun 1000 Hd	TOT LIVESTOCK				%Var 2023 2022	BOVINE < 1 Year				%Var 2023 2022	BOVINE 1-2 Year				%Var 2023 2022	BOVINE > 2 Year				%Var 2023 2022
	2020	2021	2022	2023		2020	2021	2022	2023		2020	2021	2022	2023		2020	2021	2022	2023	
BE	2 388	2 353	2 241	2 281	+1.8%	716	712	656	677	+3.2%	471	473	463	456	-1.5%	1 201	1 169	1 121	1 148	+2.4%
BG																				
CZ																				
DK	1 517	1 503	1 484	1 454	-2.1%	517	517	510	498	-2.4%	291	287	290	281	-2.9%	709	699	684	674	-1.4%
DE	11 423	11 176	10 986	10 937	-0.5%	3 410	3 398	3 296	3 260	-1.1%	2 683	2 591	2 620	2 595	-0.9%	5 330	5 188	5 071	5 082	+0.2%
EE																				
IE	7 314	7 359	7 396	7 341	-0.7%	2 117	2 146	2 134	2 074	-2.8%	1 807	1 910	1 949	1 922	-1.4%	3 390	3 303	3 313	3 346	+1.0%
EL																				
ES	6 715	6 923	6 754	6 529	-3.3%	2 488	2 634	2 569	2 410	-6.2%	930	973	902	926	+2.6%	3 297	3 316	3 283	3 192	-2.7%
FR	18 200	17 863	17 416	17 039	-2.2%	5 144	5 134	4 949	4 838	-2.2%	3 249	3 158	3 144	3 077	-2.2%	9 808	9 571	9 323	9 125	-2.1%
HR																				
IT	6 116	6 174	6 087	5 975	-1.8%	1 746	1 762	1 725	1 663	-3.6%	1 458	1 476	1 475	1 439	-2.4%	2 912	2 936	2 887	2 873	-0.5%
CY																				
LV																				
LT																				
LU																				
HU																				
MT																				
NL	3 766	3 732	3 766	3 749	-0.5%	1 558	1 523	1 546	1 506	-2.6%	446	479	493	506	+2.6%	1 762	1 729	1 726	1 736	+0.6%
AT	1 844	1 846	1 842	1 826	-0.9%	588	596	592	574	-3.1%	416	413	422	426	+0.9%	841	838	828	826	-0.2%
PL	6 344	6 401	6 444	6 354	-1.4%	1 729	1 789	1 916	1 855	-3.2%	1 796	1 856	1 674	1 670	-0.2%	2 819	2 756	2 855	2 828	-0.9%
PT	1 751	1 723	1 680	1 608	-4.3%	557	550	554	511	-7.9%	264	252	229	229	+0.2%	929	922	897	868	-3.3%
RO	1 915	1 864	1 852	1 833	-1.0%	418	386	379	370	-2.3%	217	207	220	224	+1.8%	1 280	1 271	1 254	1 239	-1.2%
SI																				
SK																				
FI																				
SE	1 453	1 453	1 449	1 444	-0.3%	462	465	458	458	+0.2%	362	369	374	371	-1.0%	629	619	617	615	-0.3%
EU	70 747	70 371	69 398	68 369	-1.5%	21 451	21 612	21 285	20 695	-2.8%	14 389	14 444	14 255	14 122	-0.9%	34 907	34 315	33 858	33 552	-0.9%

Source : EStat Newcronos

EU %Var is calculated considering only countries available in 2022 AND 2023

# LIVESTOCK

JUNE SURVEY

# EU EVOLUTION COWS

May/Jun 1000 Hd	TOTAL COWS				%Var 2023 2022	DAIRY COWS				%Var 2023 2022	OTHER COWS				%Var 2023 2022
	2020	2021	2022	2023		2020	2021	2022	2023		2020	2021	2022	2023	
BE	954	937	902	918	+1.7%	544	539	527	541	+2.7%	409	399	375	377	+0.4%
BG															
CZ															
DK	653	647	634	625	-1.4%	567	565	557	553	-0.7%	86	82	77	72	-6.7%
DE	4 609	4 517	4 430	4 399	-0.7%	3 969	3 892	3 817	3 775	-1.1%	640	626	612	623	+1.8%
EE															
IE	2 551	2 545	2 541	2 519	-0.9%	1 568	1 605	1 627	1 647	+1.2%	983	940	913	872	-4.5%
EL															
ES	2 927	2 987	2 951	2 878	-2.5%	810	828	816	791	-3.1%	2 117	2 159	2 135	2 087	-2.2%
FR	7 442	7 315	7 159	6 960	-2.8%	3 403	3 331	3 266	3 167	-3.0%	4 039	3 984	3 893	3 793	-2.6%
HR															
IT	2 130	2 161	2 130	2 123	-0.3%	1 844	1 852	1 821	1 798	-1.3%	286	309	309	325	+5.1%
CY															
LV															
LT															
LU															
HU															
MT															
NL	1 651	1 627	1 623	1 628	+0.3%	1 593	1 571	1 571	1 576	+0.3%	58	56	53	52	-1.4%
AT	716	715	710	704	-0.8%	523	531	549	546	-0.6%	193	184	161	158	-1.6%
PL	2 468	2 388	2 208	2 160	-2.2%	2 218	2 113	2 072	2 027	-2.2%	250	276	136	133	-1.7%
PT	757	757	742	718	-3.2%	239	236	227	224	-1.2%	517	521	515	494	-4.0%
RO	1 160	1 148	1 135	1 111	-2.1%	1 145	1 133	1 119	1 091	-2.4%	15	15	16	20	+23.5%
SI															
SK															
FI															
SE	510	512	510	506	-0.7%	303	302	297	295	-0.5%	207	210	213	211	-1.0%
EU	28 528	28 256	27 674	27 249	-1.5%	18 727	18 497	18 266	18 031	-1.3%	9 801	9 760	9 409	9 218	-2.0%

Source : EStat Newcronos

EU %Var is calculated considering only countries available in 2022 AND 2023

# LIVESTOCK

DECEMBER SURVEY

# EU EVOLUTION TOTAL BOVINE

Dec 1000 Hd	TOTAL LIVESTOCK				%Var 2022 2021	BOVINE < 1 Year				%Var 2022 2021	BOVINE 1-2 Year				%Var 2022 2021	BOVINE > 2 Year				%Var 2022 2021
	2019	2020	2021	2022		2019	2020	2021	2022		2019	2020	2021	2022		2019	2020	2021	2022	
BE	2 373	2 335	2 310	2 286	-1.1%	722	712	713	694	-2.7%	464	461	454	454	-0.0%	1 188	1 163	1 143	1 138	-0.5%
BG	527	589	611	579	-5.2%	100	112	121	108	-11.3%	58	71	67	69	+3.4%	369	406	423	402	-4.8%
CZ	1 367	1 340	1 359	1 390	+2.3%	411	405	408	407	-0.4%	299	295	296	314	+6.1%	657	640	655	669	+2.2%
DK	1 500	1 500	1 480	1 466	-0.9%	522	524	516	510	-1.2%	280	279	280	281	+0.4%	698	697	684	675	-1.3%
DE	11 640	11 302	11 040	10 997	-0.4%	3 485	3 405	3 355	3 308	-1.4%	2 751	2 639	2 569	2 600	+1.2%	5 403	5 258	5 116	5 089	-0.5%
EE	254	253	251	250	-0.5%	71	72	69	69	+0.3%	50	49	51	49	-3.7%	133	132	131	132	+0.4%
IE	6 560	6 529	6 649	6 552	-1.5%	1 962	2 057	2 108	1 995	-5.3%	1 741	1 708	1 775	1 810	+2.0%	2 856	2 765	2 766	2 746	-0.7%
EL	530	632	614	607	-1.2%	157	162	176	170	-3.5%	91	145	114	122	+7.7%	283	325	324	314	-3.0%
ES	6 600	6 636	6 576	6 456	-1.8%	2 529	2 541	2 319	2 487	+7.2%	857	853	1 016	786	-22.6%	3 214	3 242	3 240	3 182	-1.8%
FR	18 173	17 816	17 330	16 986	-2.0%	5 125	5 119	4 945	4 868	-1.6%	3 183	3 063	3 021	2 992	-1.0%	9 865	9 634	9 364	9 127	-2.5%
HR	420	423	428	422	-1.4%	151	146	156	149	-4.5%	107	111	107	112	+4.7%	162	166	165	161	-2.4%
IT	6 377	6 400	6 280	6 049	-3.7%	1 759	1 774	1 722	1 563	-9.2%	1 588	1 595	1 562	1 520	-2.7%	3 030	3 031	2 997	2 966	-1.0%
CY	74	83	85	81	-3.7%	25	27	27	25	-7.4%	12	14	15	15	-2.8%	38	42	43	42	-1.8%
LV	395	399	393	391	-0.5%	108	112	107	107	+0.4%	65	65	68	66	-3.3%	222	222	219	219	-0.1%
LT	635	630	629	642	+2.1%	167	169	166	173	+4.5%	132	129	135	130	-3.7%	336	332	328	339	+3.3%
LU	192	191	187	186	-0.6%	50	50	49	48	-2.1%	41	41	40	41	+0.1%	101	100	98	98	-0.1%
HU	909	933	910	894	-1.7%	258	266	269	258	-4.2%	193	195	153	159	+3.6%	458	472	487	477	-2.1%
MT	14	14	14	14	+1.3%	4	4	4	4	+1.6%	3	3	3	3	-3.3%	7	7	7	7	+3.3%
NL	3 721	3 691	3 705	3 751	+1.2%	1 528	1 510	1 519	1 536	+1.1%	440	465	482	496	+2.9%	1 752	1 716	1 704	1 719	+0.9%
AT	1 880	1 855	1 870	1 861	-0.5%	605	599	611	597	-2.3%	426	414	421	430	+2.1%	848	842	838	834	-0.5%
PL	6 262	6 279	6 379	6 448	+1.1%	1 748	1 735	1 802	1 929	+7.0%	1 757	1 800	1 915	1 699	-11.3%	2 758	2 744	2 662	2 821	+6.0%
PT	1 675	1 691	1 641	1 617	-1.4%	531	526	528	433	-18.0%	240	257	214	266	+24.0%	903	909	899	919	+2.2%
RO	1 923	1 875	1 827	1 825	-0.1%	400	369	347	346	-0.4%	223	225	222	222	+0.0%	1 300	1 281	1 258	1 258	-0.0%
SI	483	486	483	465	-3.7%	151	153	157	149	-4.9%	136	133	131	130	-0.6%	197	199	195	186	-4.8%
SK	432	442	434	426	-1.8%	122	126	125	122	-2.1%	83	87	82	82	-0.3%	227	229	228	222	-2.3%
FI	841	835	830	822	-1.0%	287	292	287	283	-1.3%	205	199	205	203	-1.1%	349	344	338	336	-0.6%
SE	1 405	1 391	1 390	1 391	+0.0%	453	464	460	461	+0.2%	339	323	334	333	-0.4%	613	603	596	597	+0.2%
EU	77 161	76 551	75 705	74 856	-1.1%	23 431	23 428	23 065	22 798	-1.2%	15 764	15 621	15 732	15 382	-2.2%	37 966	37 503	36 908	36 675	-0.6%
UK	9 459					2 860					2 335					4 264				

Source : EStat Newcronos

EU %Var is calculated considering only countries available in 2021 AND 2022

# LIVESTOCK

## DECEMBER SURVEY

# EU EVOLUTION COWS

Dec 1000 Hd	TOTAL COWS					%Var 2022 2021	DAIRY COWS					%Var 2022 2021	OTHER COWS					%Var 2022 2021
	2019	2020	2021	2022			2019	2020	2021	2022			2019	2020	2021	2022		
BE	939	921	917	913	-0.4%		538	538	537	544	+1.2%		401	383	379	370	-2.6%	
BG	343	382	397	377	-5.1%		227	242	230	213	-7.7%		116	140	166	164	-1.5%	
CZ	570	560	574	579	+0.9%		361	357	362	357	-1.6%		209	203	212	223	+5.2%	
DK	645	646	635	627	-1.3%		563	565	559	556	-0.5%		83	80	76	70	-7.9%	
DE	4 651	4 548	4 445	4 420	-0.6%		4 012	3 921	3 833	3 810	-0.6%		640	626	612	610	-0.3%	
EE	116	116	115	115	-0.4%		85	84	84	84	+0.1%		31	32	31	31	-1.6%	
IE	2 383	2 379	2 395	2 372	-1.0%		1 426	1 456	1 505	1 510	+0.3%		957	923	890	862	-3.1%	
EL	242	210	213	207	-3.0%		86	90	91	88	-3.8%		156	120	122	119	-2.5%	
ES	2 881	2 909	2 900	2 889	-0.4%		813	811	809	810	+0.2%		2 068	2 099	2 091	2 079	-0.6%	
FR	7 505	7 379	7 204	7 020	-2.6%		3 491	3 406	3 322	3 231	-2.7%		4 014	3 974	3 882	3 790	-2.4%	
HR	142	144	142	138	-2.8%		130	110	102	79	-22.5%		12	34	40	59	+47.5%	
IT	2 237	2 243	2 193	2 348	+7.1%		1 876	1 871	1 844	1 865	+1.1%		362	372	349	483	+38.6%	
CY	35	40	40	38	-3.5%		35	39	39	38	-1.6%		0	0	1	0	-100.0%	
LV	195	196	193	191	-1.0%		138	136	131	128	-2.6%		56	60	61	63	+2.4%	
LT	299	295	290	291	+0.4%		241	233	225	224	-0.5%		58	62	65	67	+3.4%	
LU	79	78	78	77	-0.5%		54	54	55	55	+1.4%		25	24	23	22	-4.9%	
HU	412	414	423	421	-0.4%		243	247	281	278	-1.1%		169	167	142	143	+0.8%	
MT	6	6	6	6	+3.4%		6	6	6	6	+4.3%		0	0	0	0	-13.6%	
NL	1 633	1 612	1 599	1 614	+0.9%		1 590	1 569	1 554	1 570	+1.0%		43	43	45	44	-2.2%	
AT	720	715	712	708	-0.5%		524	525	526	551	+4.6%		195	191	186	158	-15.0%	
PL	2 406	2 391	2 289	2 172	-5.1%		2 167	2 126	2 035	2 037	+0.1%		239	266	254	135	-47.0%	
PT	731	739	739	726	-1.8%		234	233	230	224	-2.5%		497	507	509	502	-1.4%	
RO	1 166	1 145	1 116	1 115	-0.1%		1 139	1 122	1 082	1 081	-0.1%		27	23	34	34	+0.6%	
SI	166	167	165	157	-4.8%		101	99	101	93	-7.6%		65	68	65	64	-0.4%	
SK	192	192	191	188	-1.7%		126	122	120	116	-3.4%		66	69	71	72	+1.2%	
FI	318	316	311	306	-1.4%		259	256	249	243	-2.2%		59	61	62	63	+2.0%	
SE	500	499	497	496	-0.1%		301	304	300	298	-0.6%		198	194	197	199	+0.7%	
EU	31 513	31 241	30 778	30 512	-0.9%		20 766	20 522	20 213	20 088	-0.6%		10 748	10 718	10 565	10 424	-1.3%	
UK	3 337						1 867						1 470					

Source : EStat Newcronos

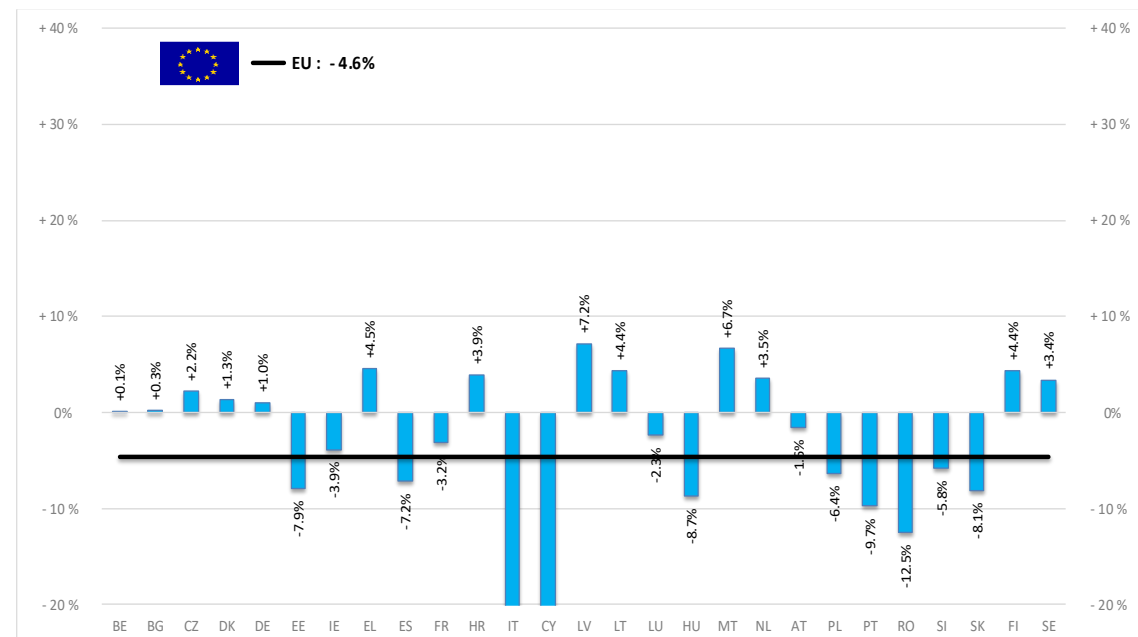
EU %Var is calculated considering only countries available in 2021 AND 2022

# PRODUCTION % EVOLUTION

HEADS	Jan-Jul 23/22	TONNES	Jan-Jul 23/22
	EU		EU
Bull	-4,4%	Bull	-4.1%
Bullock	-1,0%	Bullock	-2.3%
Cow	-3,9%	Cow	-4.2%
Heifer	-3,7%	Heifer	-5.9%
Calve	-3,5%	Calve	-5.7%
Young cattle	-4,0%	Young cattle	-6.0%
Meat of bovine animals	-3,8%	Meat of bovine animals	-4.6%

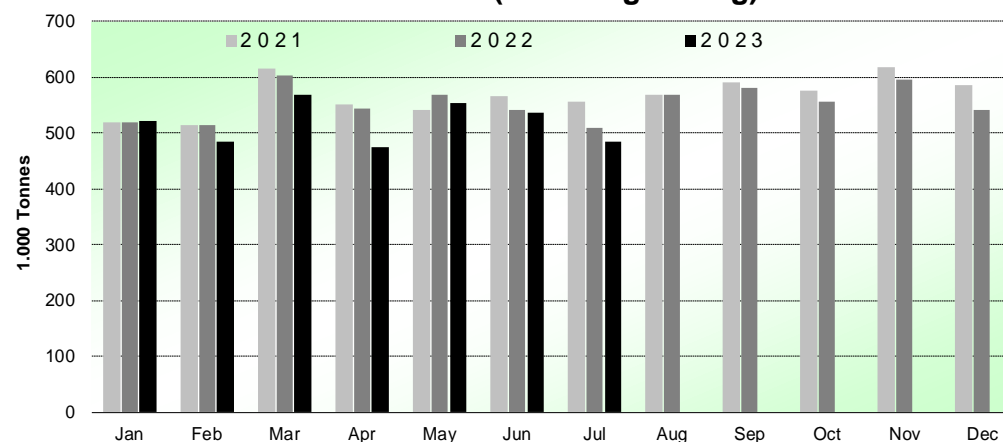
Estimates for last month of period

Estimates for last month of period :



Source : EStat - Newcronos

## Beef & Veal Production (EU Slaughtering) - Tonnes



Source : EStat-Newcronos

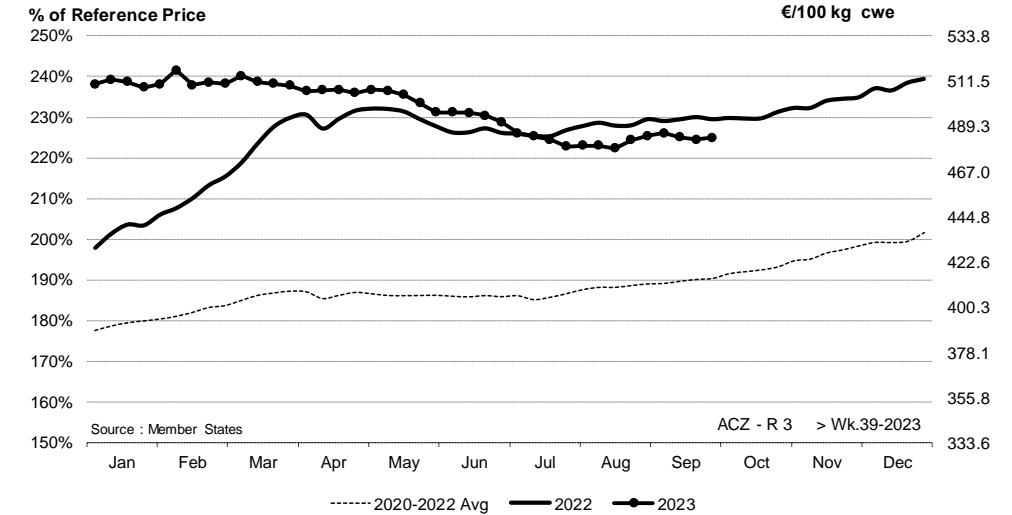
Sources : Member State notifications — Reg 2017/1185

# PRICES CARCASSES

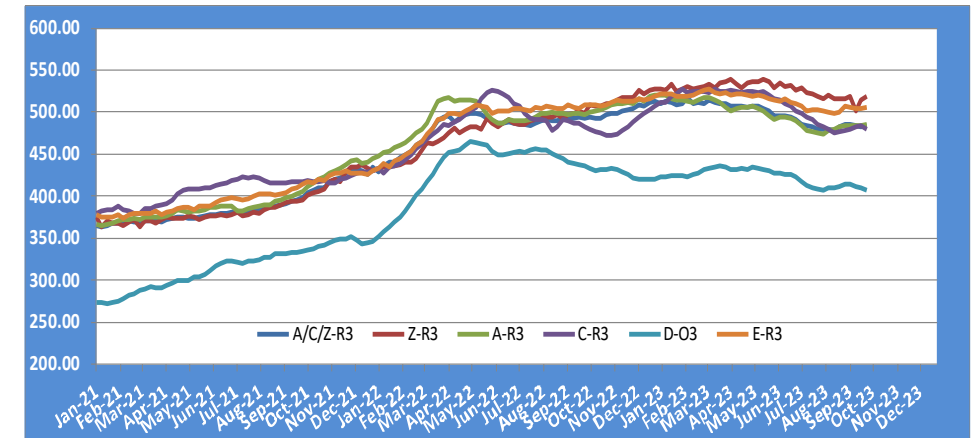
# EVOLUTION A/C/Z.R3

EU Prices week		39	Evolution since last week		Evolution since last month	Evolution since last year
Carcasse	Average A/C/Z-R3	483.7	€/100 kg	+ 0.2%	- 0.2%	- 1.8%
	Young Bovines (Z)	495.3		+ 0.7%	- 0.2%	+ 0.6%
	Young Bulls (A)	480.7		+ 0.1%	- 0.4%	- 2.7%
	Steers (C)	483.6		- 0.4%	+ 0.4%	- 0.7%
	Cows (D)	407.0		- 0.6%	- 1.8%	- 6.7%
	Heifers (E)	505.7		+ 0.2%	- 0.3%	- 0.5%
	Calves slaughtered <8M	598.0		+ 0.5%	- 8.3%	- 2.7%
Live Animals	Male Calves Dairy Type	111.0	€/head	- 3.5%	- 10.7%	+ 10.6%
	Male Calves Beef Type	245.0		- 2.2%	- 3.4%	+ 6.5%
	Young Store Cattle	3.26	€/kg	+ 0.4%	+ 2.9%	+ 5.1%
	Yearling Male Store Cattle	3.60		+ 0.9%	+ 1.3%	+ 5.6%
	Yearling Female Store Cattle	2.81		+ 0.1%	+ 0.2%	+ 0.7%

ACZ - R 3 > Wk.39-2023



## EU EVOLUTION ALL CAT GLOBAL VIEW

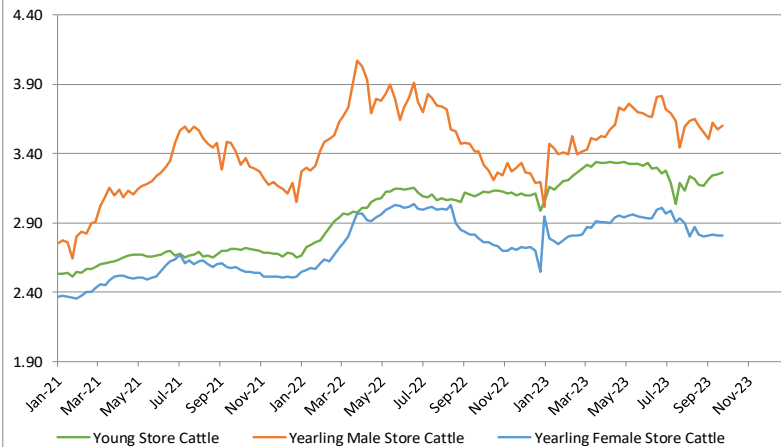


Sources : MSs notifications (Regulation (EU) 1182/2017 and 1184/2017)

# PRICES LIVE BOVINES AND CALVES

Store cattle (€/100 kg live weight)

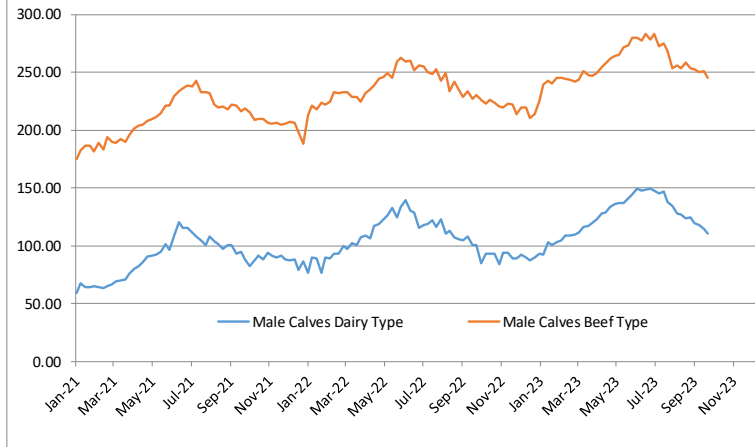
Young Store Cattle Prices



Young Store Cattle Price in	Week 39	3.26	Yearling Male Store Cattle Price	3.60
	Change y/y	+5.1%	Change y/y	+5.6%
Yearling Female Store Cattle Price		2.81		
	Change y/y	+0.7%		

Male calves aged between  
8 days and 4 weeks (€/head)

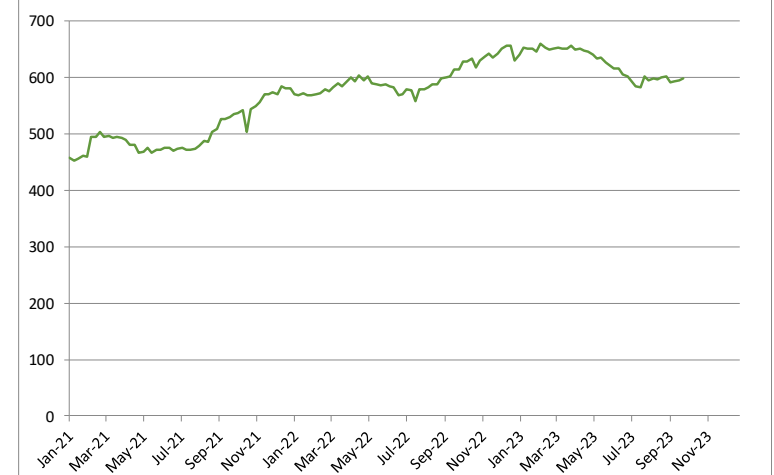
Male Rearing Calves Prices



Male Rearing Calves Beef type		Male Rearing Calves Dairy type	
Price in Week 39	245.05	Price in Week 39	111.00
Change y/y	+6.5%	Change y/y	+10.6%

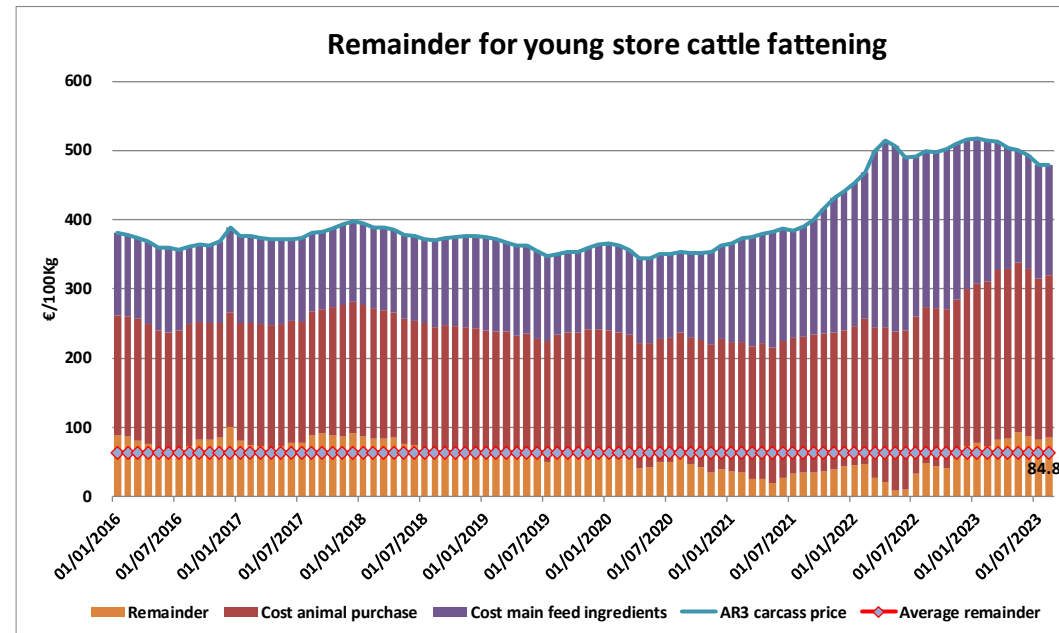
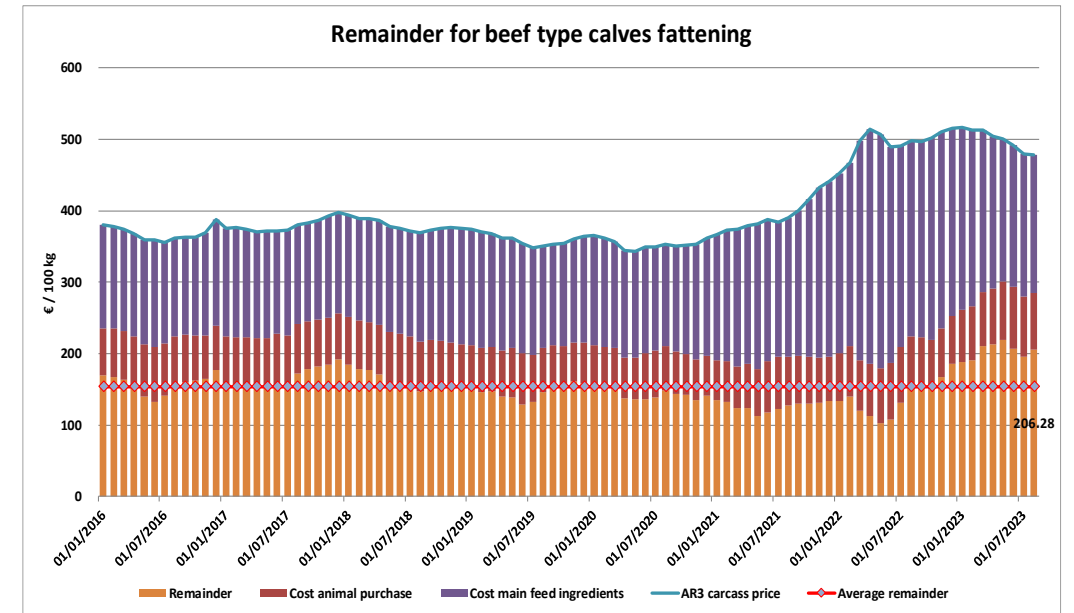
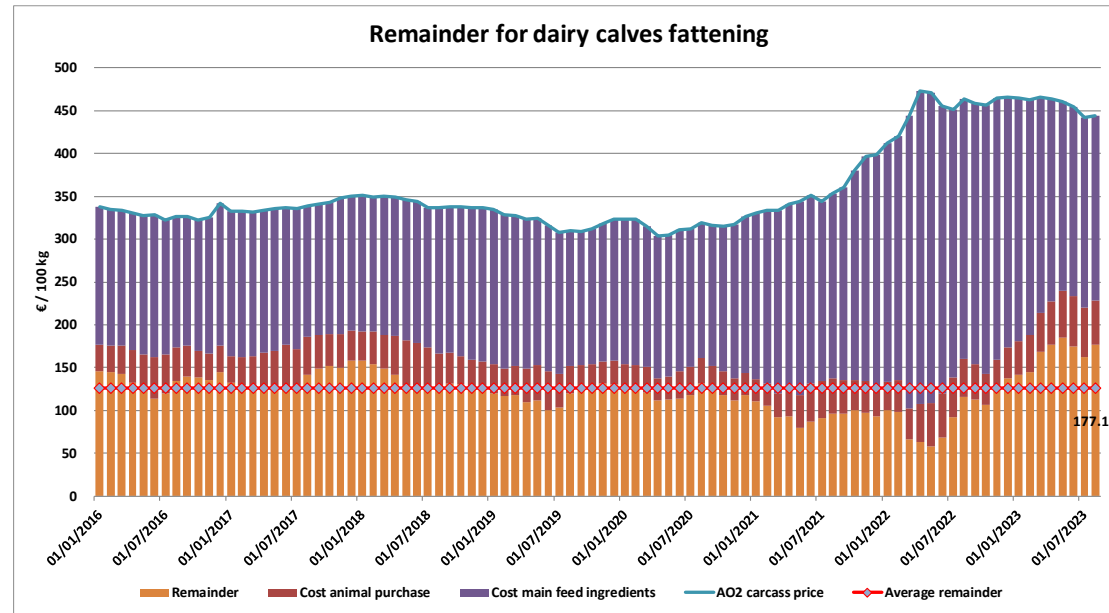
Calves slaughtered less than 8 months  
(€/100 kg cw)

Calves Slaughtered before the Age of 8 Months



Price in Week 39	598.07 € / 100 kg of carcasse weight
Change y/y	-2.7%

# REMAINDERS



# TRADE

# EU EXPORTS

## Beef & Live Animals

### EU Exports of Beef and Live Animals (excluding fats): Trade figures (COMEXT)

*In Tons of Carcase Weight*

Destinations	2021		2022		Jan to Jun 2023		Compared to Jan to Jun 2022
	Tons	% Extra EU	Tons	% Extra EU	Tons	% Extra EU	
United Kingdom	344.633	33,4%	360.535	38,5%	177.398	38,5%	+0,9%
Turkey	14.953	1,5%	13.452	1,4%	42.850	9,3%	+++
Israel	66.022	6,4%	63.598	6,8%	27.913	6,1%	-9,7%
Bosnia-Herz.	40.504	3,9%	38.801	4,1%	19.960	4,3%	+14,9%
Ghana	47.618	4,6%	31.762	3,4%	16.936	3,7%	-13,6%
Ivory Coast	29.187	2,8%	29.879	3,2%	14.169	3,1%	-7,5%
Morocco	11.868	1,2%	8.273	0,9%	11.959	2,6%	+++
Hong Kong	44.769	4,3%	10.494	1,1%	10.936	2,4%	+81,1%
Switzerland	28.717	2,8%	25.000	2,7%	9.840	2,1%	-26,8%
Kosovo	16.478	1,6%	17.086	1,8%	8.816	1,9%	+24,8%
Lebanon	19.527	1,9%	21.042	2,2%	8.634	1,9%	-32,2%
Other Destinations	366.696	35,6%	317.131	33,8%	111.610	24,2%	-32,5%
Extra-EU	1.030.974		937.052		461.021		-1,8%
% Change				-9,1%			

*In Thousand Euros*

	2021		2022		Jan to Jun 2023		Compared to Jan to Jun 2022
	1 000 EUR	% Extra EU	1 000 EUR	% Extra EU	1 000 EUR	% Extra EU	
United Kingdom	1.495.334	38,4%	1.788.823	41,7%	917.082	40,5%	+6,6%
Turkey	86.382	2,2%	96.786	2,3%	294.694	13,0%	+++
Israel	328.295	8,4%	377.934	8,8%	176.174	7,8%	+1,2%
Bosnia-Herz.	126.443	3,3%	161.208	3,8%	87.323	3,9%	+23,1%
Ghana	47.987	1,2%	35.528	0,8%	17.115	0,8%	-21,3%
Ivory Coast	25.645	0,7%	25.506	0,6%	12.101	0,5%	-4,9%
Morocco	60.639	1,6%	48.107	1,1%	71.722	3,2%	+++
Hong Kong	118.737	3,1%	33.178	0,8%	19.357	0,9%	+6,2%
Switzerland	171.272	4,4%	188.978	4,4%	75.436	3,3%	-22,9%
Kosovo	43.776	1,1%	60.917	1,4%	35.893	1,6%	+54,4%
Lebanon	80.664	2,1%	110.119	2,6%	46.536	2,1%	-29,0%
Other Destinations	1.304.359	33,5%	1.364.716	31,8%	513.618	22,7%	-25,0%
Extra-EU	3.889.533		4.291.801		2.267.049		+9,7%
% Change				+10,3%			

# TRADE

# EU IMPORTS

## Beef & Live Animals

## EU Imports of Beef and Live Animals (Excl Fats): Trade Figures (COMEXT – tonnes cwe)

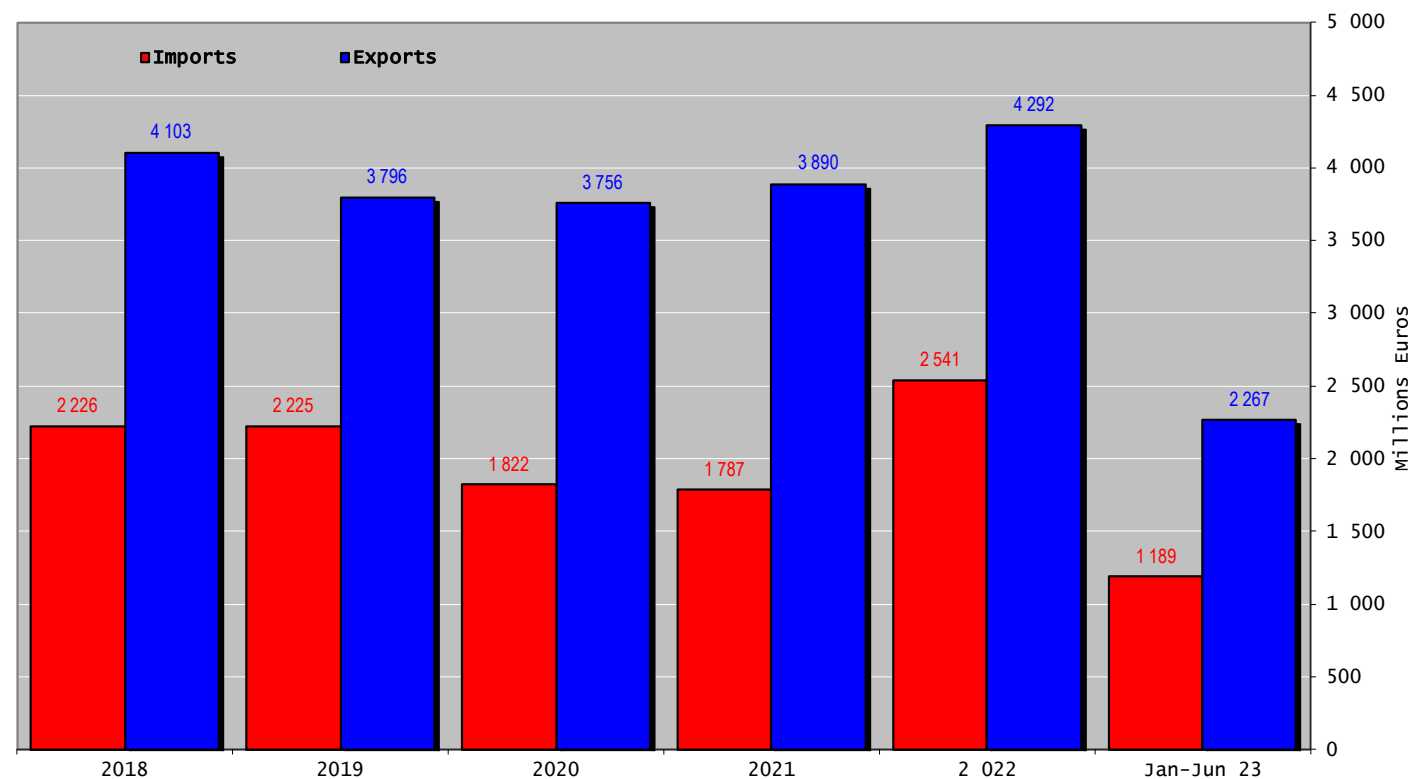
*In Tons of Carcase Weight*

Origins	2021		2022		Jan to Jun 2023		Compared to Jan to Jun 2022
	Tons	% Extra EU	Tons	% Extra EU	Tons	% Extra EU	
United Kingdom	87.599	28,3%	142.454	37,0%	54.037	30,5%	-15,9%
Brazil	81.737	26,4%	86.551	22,5%	47.731	26,9%	+6,2%
Argentina	52.300	16,9%	62.605	16,3%	30.844	17,4%	+11,3%
Uruguay	42.669	13,8%	37.669	9,8%	19.858	11,2%	-2,9%
USA	14.910	4,8%	17.269	4,5%	8.993	5,1%	+10,3%
Australia	8.925	2,9%	8.385	2,2%	3.279	1,8%	-16,3%
Namibia	1.996	0,6%	5.168	1,3%	3.098	1,7%	+82,8%
Paraguay	3.933	1,3%	5.404	1,4%	2.735	1,5%	+8,2%
New Zealand	4.380	1,4%	5.527	1,4%	2.395	1,4%	-7,9%
Switzerland	4.714	1,5%	4.729	1,2%	1.616	0,9%	-14,3%
Canada	1.816	0,6%	2.176	0,6%	814	0,5%	-11,9%
Other Destinations	4.290	1,4%	7.171	1,9%	1.862	1,1%	-52,1%
Extra-EU	309.270		385.107		177.261		-3,1%
% Change				+24,5%			

*In Thousand Euros*

	2021		2022		Jan to Jun 2023		Compared to Jan to Jun 2022
	1 000 EUR	% Extra EU	1 000 EUR	% Extra EU	1 000 EUR	% Extra EU	
United Kingdom	360.517	20,2%	569.534	22,4%	257.358	21,6%	-5,9%
Brazil	387.194	21,7%	542.614	21,4%	272.862	22,9%	+5,7%
Argentina	376.658	21,1%	550.718	21,7%	247.936	20,8%	-1,5%
Uruguay	246.910	13,8%	321.519	12,7%	149.693	12,6%	-6,4%
USA	156.708	8,8%	214.772	8,5%	115.517	9,7%	+18,1%
Australia	90.481	5,1%	101.737	4,0%	40.841	3,4%	-9,1%
Namibia	6.902	0,4%	24.570	1,0%	12.579	1,1%	+75,1%
Paraguay	20.419	1,1%	35.579	1,4%	15.484	1,3%	-5,3%
New Zealand	31.669	1,8%	50.317	2,0%	25.148	2,1%	+19,1%
Switzerland	53.477	3,0%	55.346	2,2%	18.010	1,5%	-19,9%
Canada	18.559	1,0%	21.873	0,9%	10.641	0,9%	+15,3%
Other Destinations	37.331	2,1%	52.847	2,1%	23.281	2,0%	-5,2%
Extra-EU	1.786.825		2.541.424		1.189.349		+0,2%
% Change				+42,2%			

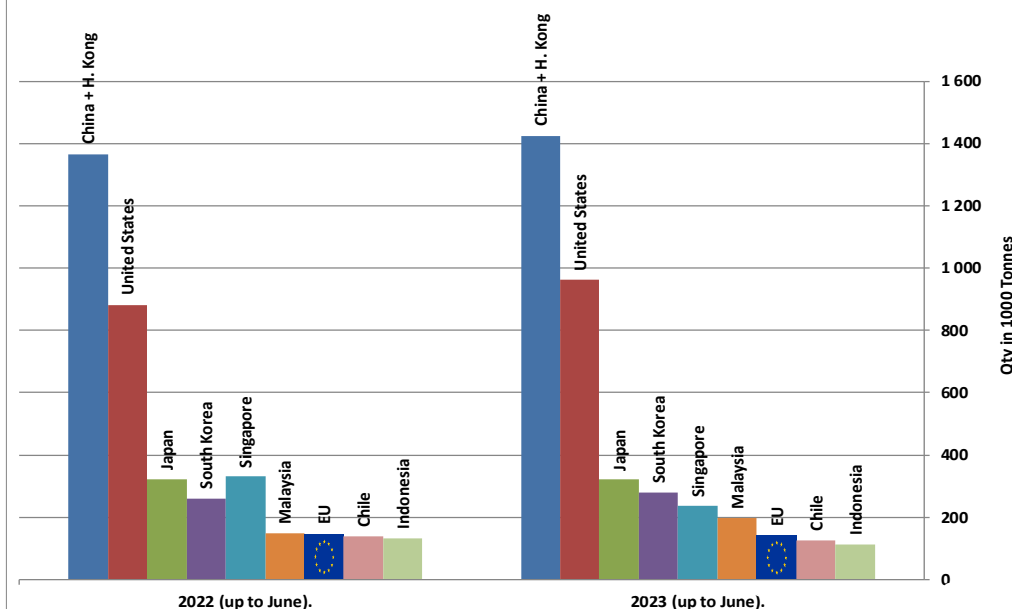
## Trade Balance of Beef Products and Live Animals



# WORLD BEEF MARKET

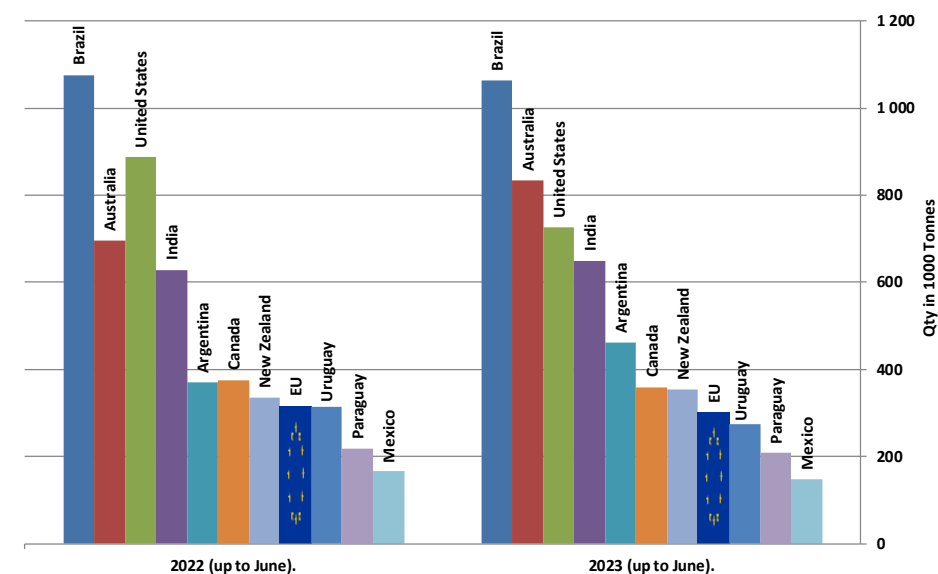
## Main Importers of BEEF Products (up to June).

Source : GTA \* Excluding live animals (0102), fats, preparations of several types of meat (0209, 0210 99 and 1602 90)

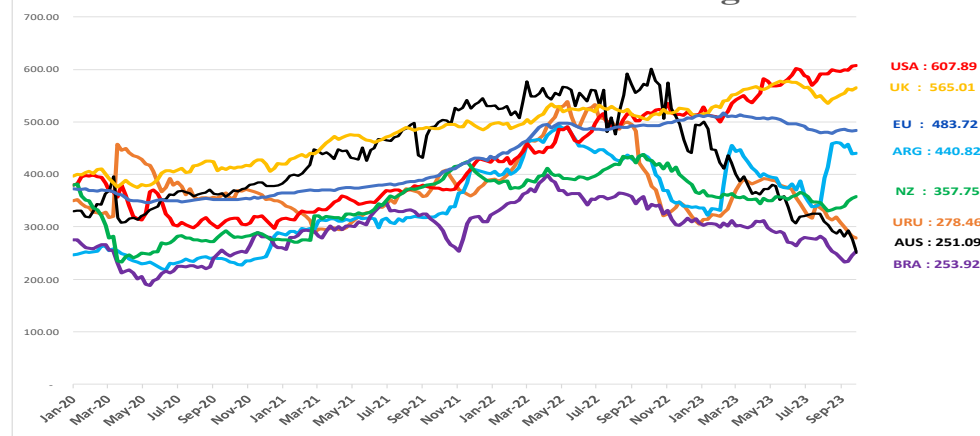


## Main Exporters of BEEF Products (up to June).

Source : GTA \* Excluding live animals (0102), fats, preparations of several types of meat (0209, 0210 99 and 1602 90)

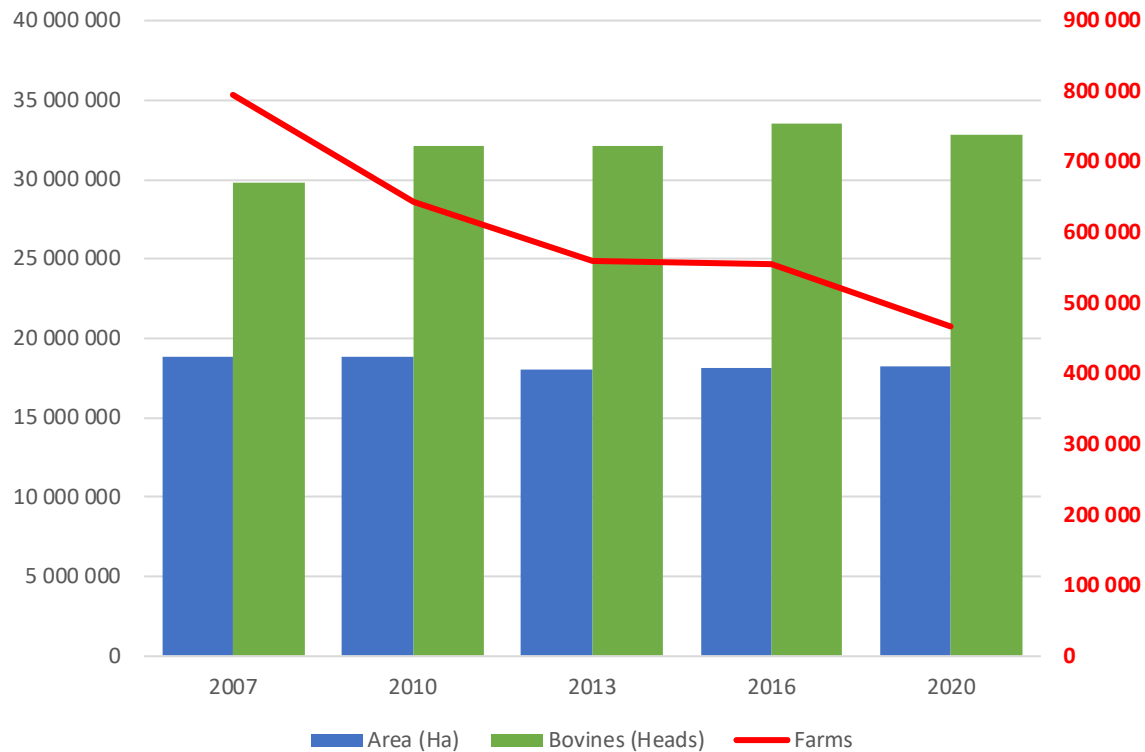


## World Beef Prices in Euros/100 kg carcase

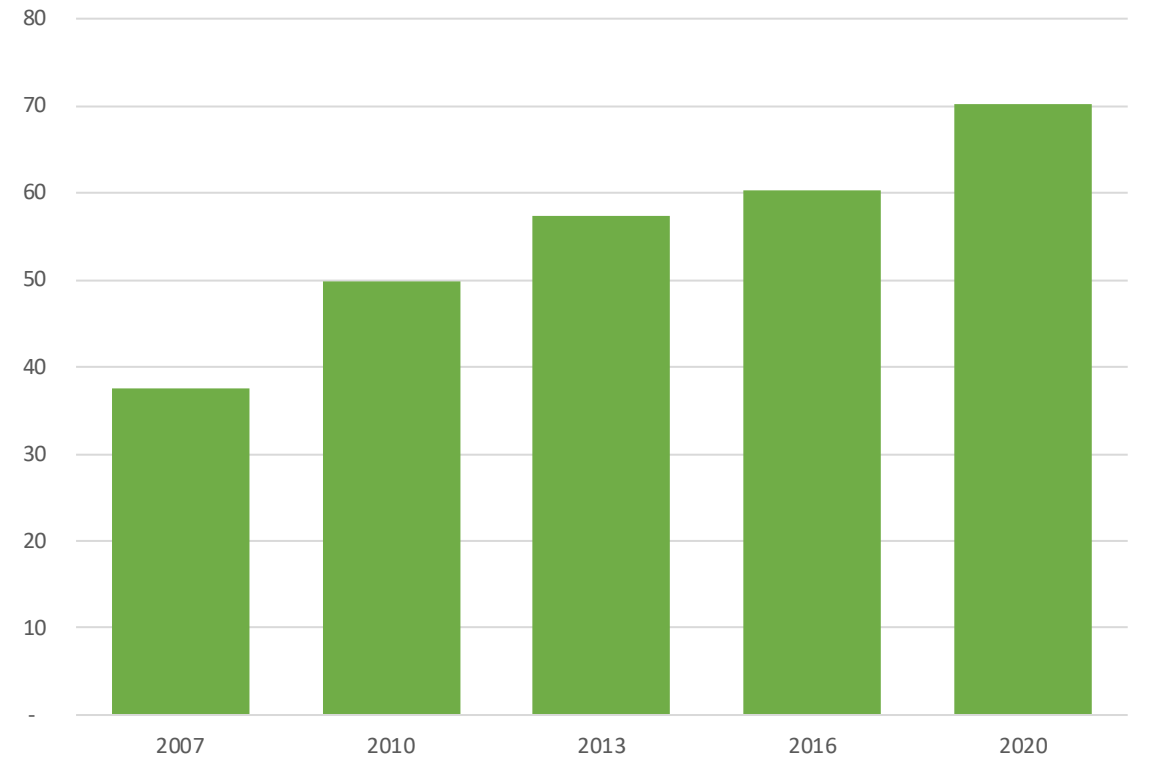


# Farm Structure Survey

EU Specialist Dairying : Evolution of Area, Number of Farms and Heads of Bovine Animals

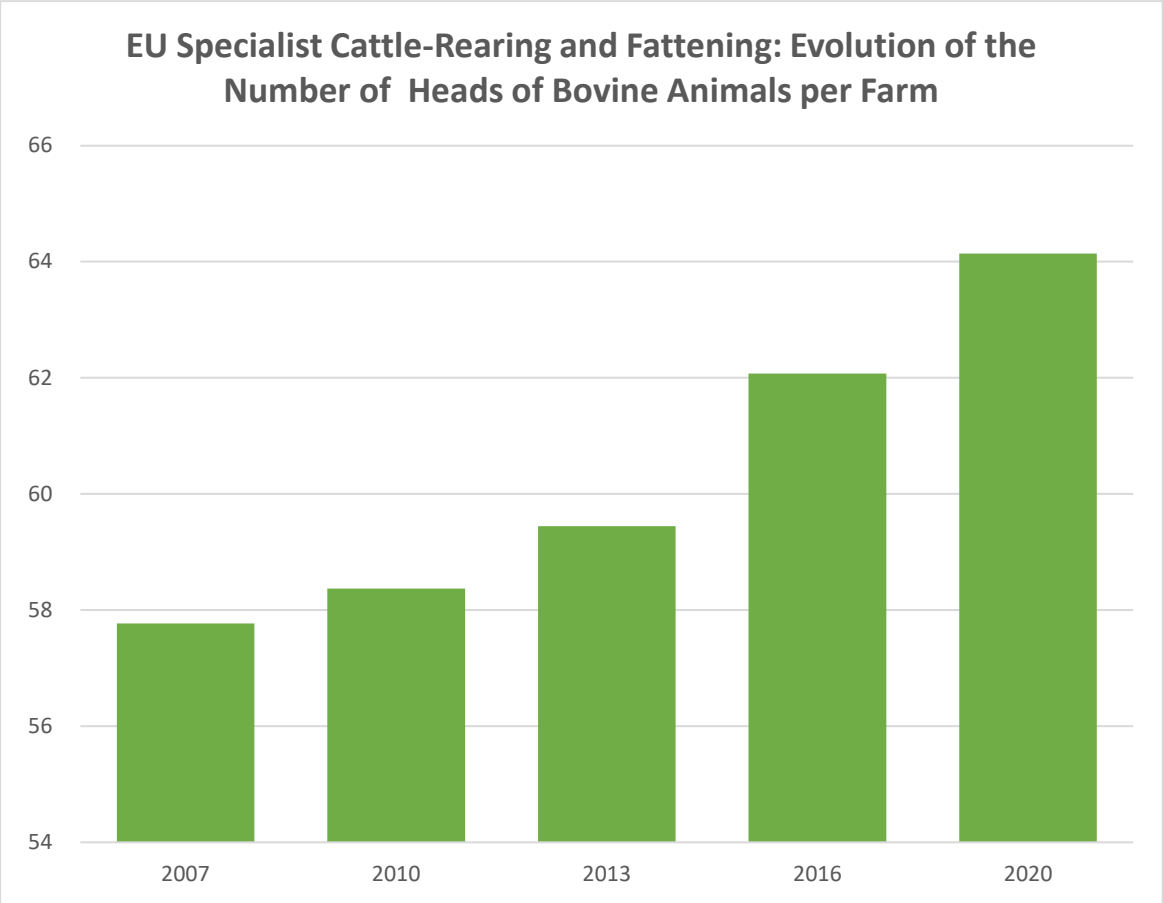
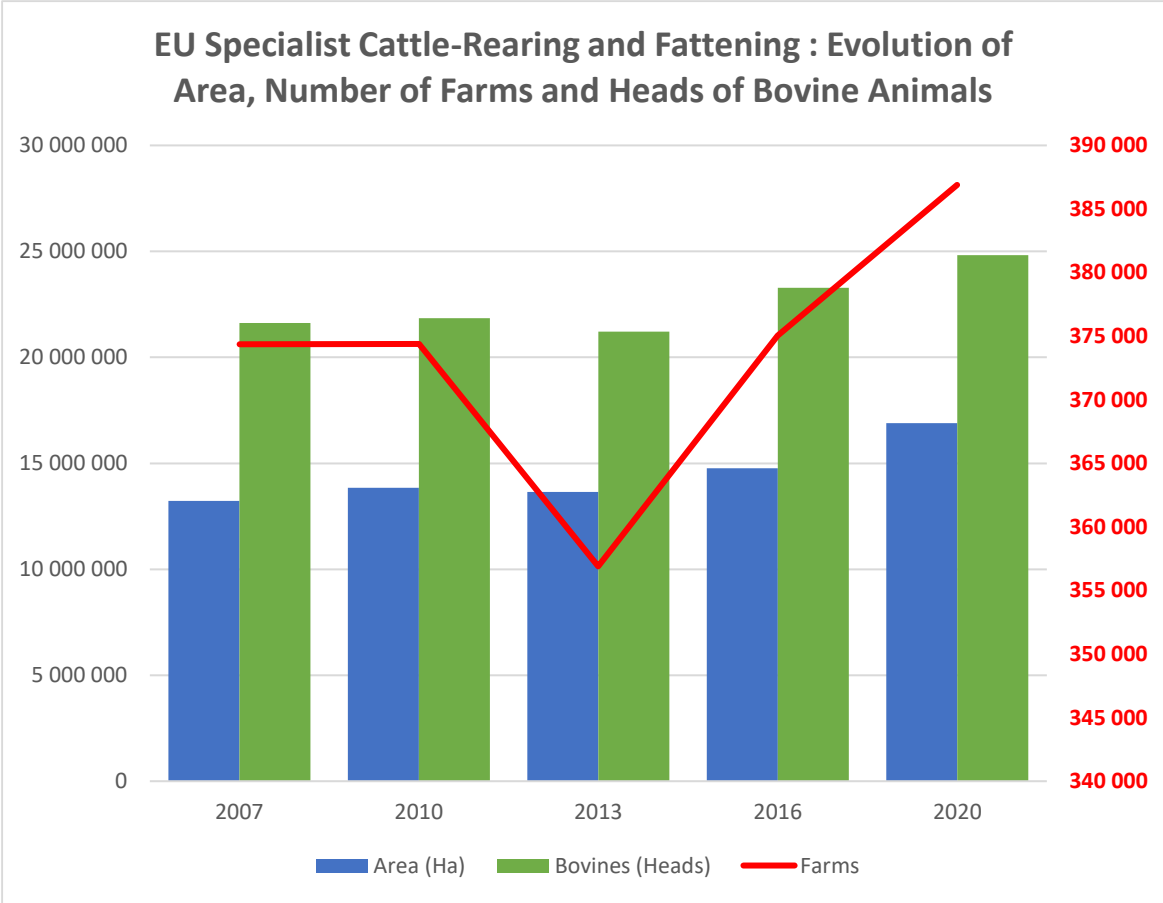


EU Specialist dairying : Evolution of the Number of Heads of Bovine Animals per Farm



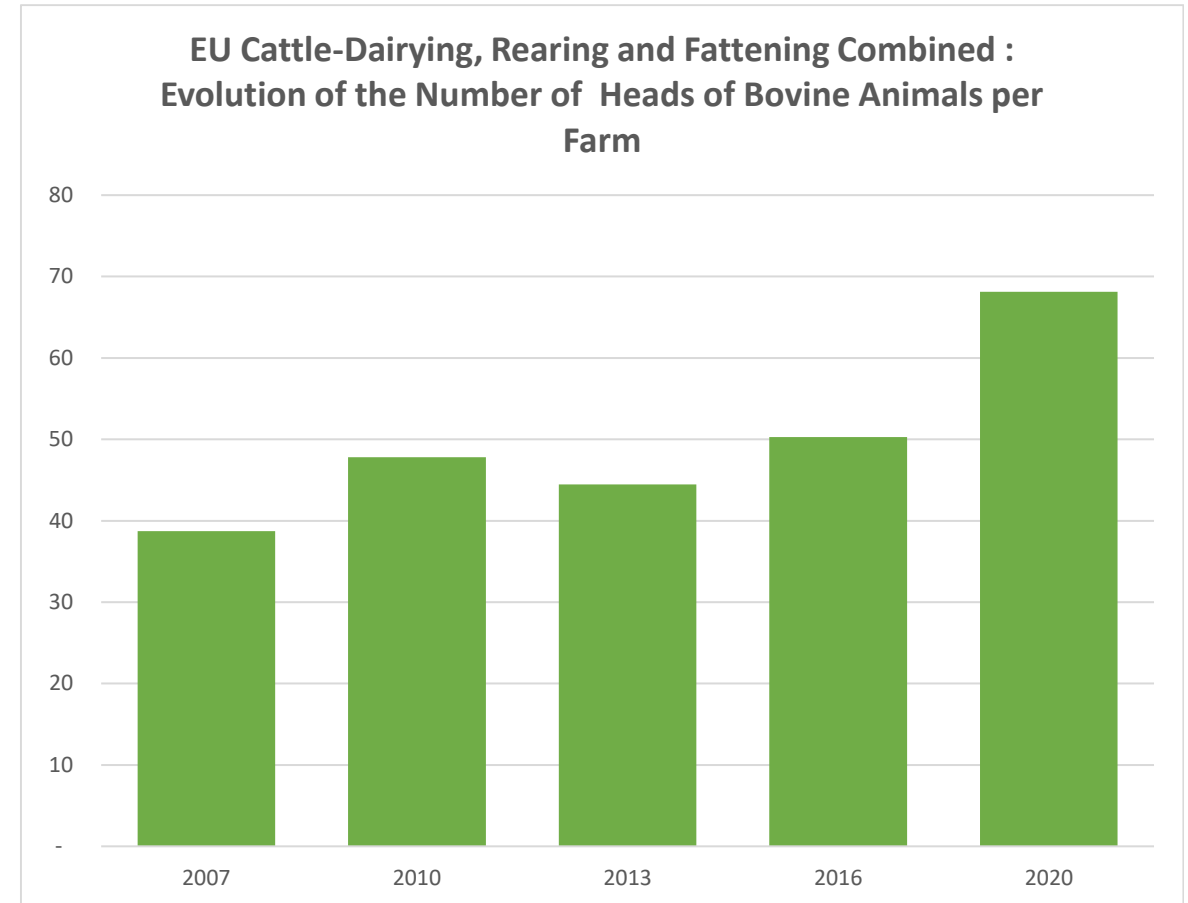
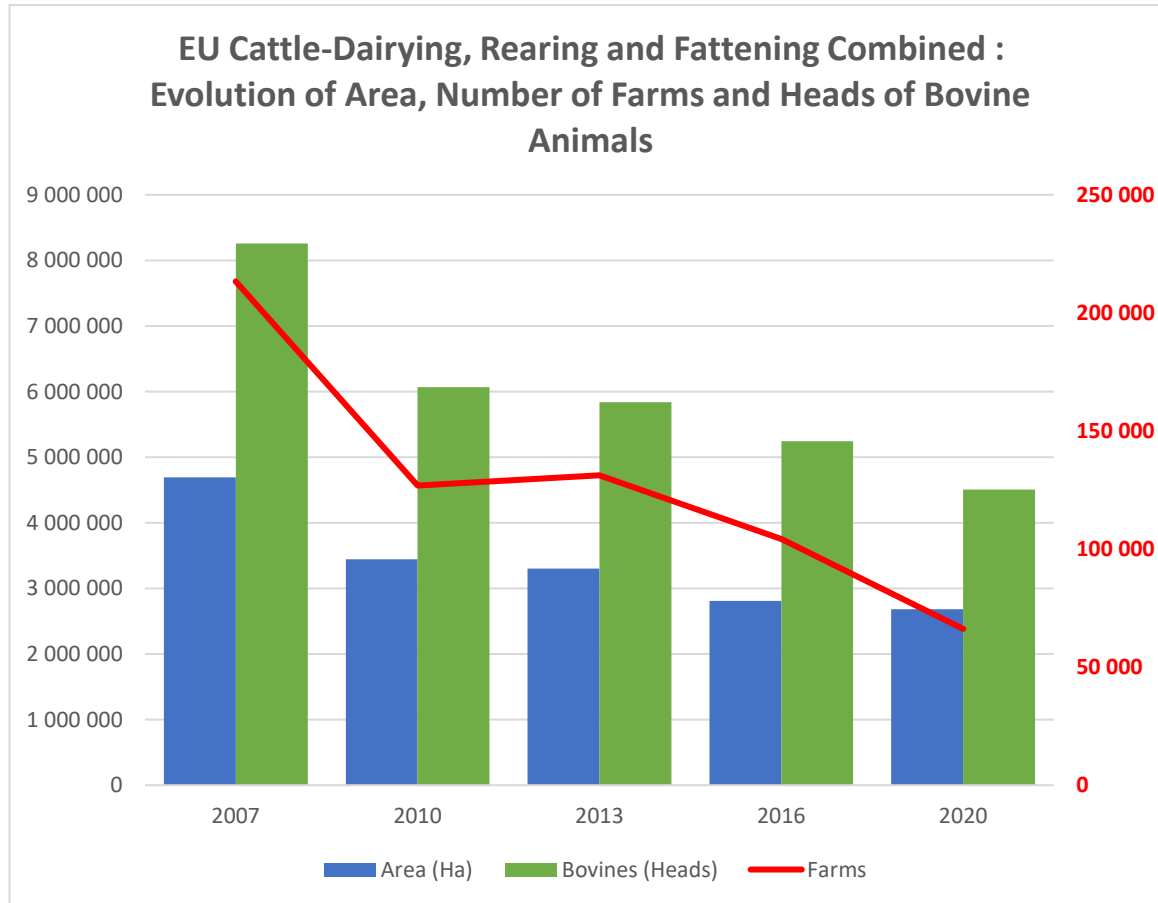
16 October 2023

# Farm Structure Survey



16 October 2023

# Farm Structure Survey



16 October 2023

THANK YOU VERY MUCH

More Information at:

EU Market Observatory

[https://ec.europa.eu/agriculture/market-observatory/meat\\_en](https://ec.europa.eu/agriculture/market-observatory/meat_en)

And

Agri-FOOD data portal:

<http://agridata.ec.europa.eu/>

# Thank you



© European Union 2020

Unless otherwise noted the reuse of this presentation is authorised under the [CC BY 4.0](https://creativecommons.org/licenses/by/4.0/) license. For any use or reproduction of elements that are not owned by the EU, permission may need to be sought directly from the respective right holders.

Slide xx: element concerned, source: e.g. Fotolia.com; Slide xx: element concerned, source: e.g. iStock.com

