

# The EU school fruit, vegetables and milk scheme



## Annual monitoring report

2017/2018 school year

*Country:* **GERMANY - Bremen**

*Received on:* **30-01-2019**

Information by the country's competent authorities. The report is sent to, but not approved by, the Commission that may make comments.

Non-mandatory information, nevertheless recommended for the quality of the report, in grey.

Figures on budget execution (31 December 2018) are preliminary: corrections are possible and payments may still be made.

# 1. Budget execution

## 1.1. Expenditure for the supply/distribution of products (EUR)

|                          | School fruit and vegetables |           |                | School milk                             |  |   | Total         |                              |
|--------------------------|-----------------------------|-----------|----------------|---|--|---|---------------|------------------------------|
|                          | Fresh                       | Processed | in annex       | Drinking milk and lactose-free versions | Cheese, curd, yoghurt and other milk products with no added flavouring, fruit, nuts or cocoa | Milk products with added flavouring, fruit, nuts or cocoa |               | Total milk and milk products |
| <b>EU aid</b>            | 227.817                     |           | <b>227.817</b> | 42.674                                  |  |   | <b>42.674</b> | <b>270.491</b>               |
| <b>National Funds</b>    |                             |           |                |   |  |   |               |                              |
| <i>of which: Public</i>  |                             |           |                |   |  |   |               |                              |
| <i>of which: Private</i> |                             |           |                |   |  |   |               |                              |
| <b>Comments</b>          |                             |           |                |   |  |   |               |                              |

## 1.2. Expenditure for the educational measures (EUR)

|                          | On school fruit and vegetables | On school milk | Total |
|--------------------------|--------------------------------|----------------|-------|
| <b>EU aid</b>            |                                |                |       |
| <b>National Funds</b>    |                                |                |       |
| <i>of which: Public</i>  |                                |                |       |
| <i>of which: Private</i> |                                |                |       |
| <b>Comments</b>          |                                |                |       |

## 1.3. Expenditure for information, monitoring and evaluation (EUR)

|                          | On school fruit and vegetables | On school milk | Total |
|--------------------------|--------------------------------|----------------|-------|
| <b>EU aid</b>            |                                |                |       |
| <b>National Funds</b>    |                                |                |       |
| <i>of which: Public</i>  |                                |                |       |
| <i>of which: Private</i> |                                |                |       |
| <b>Comments</b>          |                                |                |       |

## 2.1 Participating children

|                              | Participating children |   |              |
|------------------------------|------------------------|---|--------------|
|                              | Number of children     | Number of children who participated in the school fruit and vegetables part | in annex     |
| <b>Nurseries/Pre-schools</b> | 3.890                  |   | 3.890        |
| <i>Of which: Nurseries</i>   |                        |   |              |
| <i>Of which: Pre-schools</i> |                        |   |              |
| <b>Primary schools</b>       | 6.988                  | 6.988   |              |
| <b>Secondary schools</b>     |                        |   |              |
| <b>Total</b>                 | <b>10.878</b>          | <b>6.988</b>  | <b>3.890</b> |
| <b>Comments</b>              |                        |   |              |

## 2.2 Number of children in the target group

|                              | Number of children in the target group set out in the strategy |
|------------------------------|--|
| <b>Nurseries/Pre-schools</b> | 18.500   |
| <i>Of which: Nurseries</i>   | 18.500   |
| <i>Of which: Pre-schools</i> |  |
| <b>Primary schools</b>       | 21.000   |
| <b>Secondary schools</b>     |  |
| <b>Total</b>                 | <b>39.500</b>  |
| <b>Comments</b>              | <i>approximate number</i>                                      |



## 2.3 Total number of children

|                              | Number of children eligible for the EU school fruit, vegetables and milk scheme |
|------------------------------|---|
| <b>Nurseries/Pre-schools</b> | 18.500  |
| <i>Of which: Nurseries</i>   | 18.500  |
| <i>Of which: Pre-schools</i> |   |
| <b>Primary schools</b>       | 21.000  |
| <b>Secondary schools</b>     |   |
| <b>Total</b>                 | <b>39.500</b>   |
| <b>Comments</b>              | <i>approximate number</i>   |



### 3.1 Participating schools

|                              | Participating schools |   |           |
|------------------------------|-----------------------|---|-----------|
|                              | Number of schools     | Number of schools that participated in the school fruit and vegetables part | in annex  |
| <b>Nurseries/Pre-schools</b> | 46                    |   | 46        |
| <i>Of which: Nurseries</i>   | 46                    |   | 46        |
| <i>Of which: Pre-schools</i> |                       |   |           |
| <b>Primary schools</b>       | 29                    | 29  |           |
| <b>Secondary schools</b>     |                       |   |           |
| <b>Total</b>                 | <b>75</b>             | <b>29</b>   | <b>46</b> |
| <b>Comments</b>              |                       |   |           |

### 3.2 Number of schools in the target group

|                              | Number of schools in the target group    | School fruit and vegetables part of the scheme | School milk part of the scheme |
|------------------------------|--|--|--------------------------------|
| <b>Nurseries/Pre-schools</b> | 312                                      |  | 312                            |
| <i>Of which: Nurseries</i>   | 312                                      |  | 312                            |
| <i>Of which: Pre-schools</i> |  |  |                                |
| <b>Primary schools</b>       | 96                                       | 96   |                                |
| <b>Secondary schools</b>     |  |  |                                |
| <b>Total</b>                 | <b>408</b>                               | <b>96</b>                                      | <b>312</b>                     |
| <b>Comments</b>              | <i>for nurseries, approximate number</i> |  |                                |

### 3.3 Total number of schools

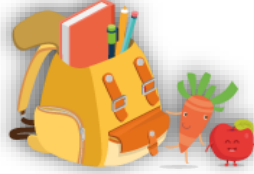
|                              |  |
|------------------------------|--|
| <b>Nurseries/Pre-schools</b> | 312                                      |
| <i>Of which: Nurseries</i>   | 312                                      |
| <i>Of which: Pre-schools</i> |  |
| <b>Primary schools</b>       | 96                                       |
| <b>Secondary schools</b>     |  |
| <b>Total</b>                 | <b>408</b>                               |
| <b>Comments</b>              | <i>for nurseries, approximate number</i> |



## 4.1 Products supplied/distributed to schoolchildren and, if applicable, tasted by schoolchildren as part of educational measures

### 4.1.1 Fresh fruit

|                    | List                               |
|--------------------|------------------------------------|
| Apples             | ✓                                  |
| Apricots           | ✓                                  |
| Aromatic Herbs     |                                    |
| Avocados           |                                    |
| Bananas            | ✓                                  |
| Berries            |                                    |
| Cherries           |                                    |
| Citrus Fruit       | ✓                                  |
| Figs               |                                    |
| Grapes             | ✓                                  |
| Guavas/Mangoes     |                                    |
| Kiwis              | ✓                                  |
| Melons             | ✓                                  |
| Nuts               |                                    |
| Peaches/Nectarines | ✓                                  |
| Pears              | ✓                                  |
| Pineapples         |                                    |
| Plums              | ✓                                  |
| Quinces            |                                    |
| Strawberries       |                                    |
| Watermelons        | ✓                                  |
| Comments           | <i>supplied in the school year</i> |

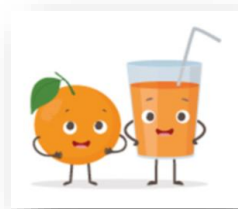


### 4.1.2 Fresh vegetables

|                | List                               |
|----------------|------------------------------------|
| in annex       |                                    |
| Asparagus      |                                    |
| Aubergines     |                                    |
| Beet           |                                    |
| Broccoli       |                                    |
| Cabbages       |                                    |
| Carrots        | ✓                                  |
| Cauliflowers   |                                    |
| Celery         |                                    |
| Chicory        |                                    |
| Courgettes     |                                    |
| Cucumbers      | ✓                                  |
| Fennel         |                                    |
| Kohlrabi       | ✓                                  |
| Kale           |                                    |
| Garlic         |                                    |
| Gherkins       |                                    |
| Leeks          |                                    |
| Lettuce        |                                    |
| Mushrooms      |                                    |
| Onions         |                                    |
| Parsnips       |                                    |
| Peas           |                                    |
| Peppers        |                                    |
| Pulses         |                                    |
| Pumpkins       |                                    |
| Radishes       |                                    |
| Rutabagas      |                                    |
| Salad beetroot |                                    |
| Salsifis       |                                    |
| Spinach        |                                    |
| Tomatoes       | ✓                                  |
| Turnips        |                                    |
| Comments       | <i>supplied in the school year</i> |

### 4.1.3 Processed fruit and vegetables

|                       | List |
|-----------------------|------|
| Fruit Juices          |      |
| Fruit Purées/Compotes |      |
| Jams/Marmalades       |      |
| Dried Fruits          |      |
| Vegetable Juices      |      |
| Vegetables Soups      |      |
| Other:                |      |
| Comments              |      |



#### 4.1.4 Milk and milk products

|   | List |
|---|------|
| Drinking milk or lactose-free versions  | ✓    |
| Cheese and curd   |      |
| Plain yoghurt   |      |
| Milk products without added sugar, flavouring, fruit, nuts or cocoa                       |      |
| Milk products without fruit juice, naturally flavoured                                    |      |
| Milk products with fruit juice, naturally flavoured or non-flavoured                      |      |
| Milk-based drinks with cocoa, with fruit juice or naturally flavoured                     |      |
| Fermented or non-fermented milk products with fruit, naturally flavoured or non-flavoured |      |
| Comments  |      |



#### 4.1.5 Other agricultural products that children tasted as part of educational measures

|              | List |
|--------------|------|
| Table olives |      |
| Olive oil    |      |
| Honey        |      |
| Other:       |      |
| Comments     |      |



#### 4.1.a) Priorities for the choice of school fruit, vegetables and milk

|                           | Yes/No | Comments                   |
|---------------------------|--------|----------------------------|
| Local/regional purchasing | Yes    |                            |
| Organic products          | Yes    | <i>as much as possible</i> |
| Short supply chains       | Yes    |                            |
| Quality schemes           |        |                            |
| Fair trade                |        |                            |
| Other:                    |        |                            |

#### 4.2 Average size of portion of school fruit, vegetables and milk (Kg/Lt)

|          | School fruit and vegetables               | School milk                       |
|----------|---|-----------------------------------|
| Kg       | 0,10                                      |                                   |
| Liters   |   | 0,23                              |
| Comments | <i>Bio: 0,0992 / Conventional: 0,1000</i> | <i>Bio: 0,2040 / Conv: 0,2380</i> |

#### 4.3 Average cost of portion of school fruit, vegetables and milk (EUR)

|                               | School fruit and vegetables | School milk              |
|-------------------------------|-----------------------------|--------------------------|
| EU aid                        | 0,33                        | 0,31                     |
| National aid (private/public) |                             |                          |
| Comments                      | Bio: 0,347/ Conv: 0,290     | Bio: 0,301 / Conv: 0,308 |

#### 4.3.a Average cost of portion of apples in bulk (EUR)

|                               | Portion of apples in bulk |
|-------------------------------|---------------------------|
| EU aid                        |                           |
| National aid (private/public) |                           |
| Comments                      |                           |

#### 4.3.b Average cost of portion of drinking milk (EUR)

|                               | Portion of drinking milk |
|-------------------------------|--------------------------|
| EU aid                        |                          |
| National aid (private/public) |                          |
| Comments                      |                          |

#### 4.4. Frequency of supply/distribution of school fruit, vegetables and milk

|                      | School fruit and vegetables | School milk |
|----------------------|-----------------------------|-------------|
| Once per week        |                             | ✓           |
| Twice per week       |                             |             |
| Three times per week | ✓                           |             |
| Four times per week  |                             |             |
| Daily                |                             |             |
| Other:               |                             |             |
| Comments             |                             |             |



#### 4.5. Duration of supply/distribution of fruit, vegetables and milk

|                                      | School fruit and vegetables | School milk |
|--------------------------------------|-----------------------------|-------------|
| ≤ 2 weeks                            |                             |             |
| > 2 and ≤ 4 weeks                    |                             |             |
| > 4 and ≤ 12 weeks                   |                             |             |
| > 12 and ≤ 24 weeks                  |                             |             |
| > 24 and ≤ 36 weeks                  |                             |             |
| Entire school year                   | ✓                           | ✓           |
| Other: please specify under comments |                             |             |
| Comments                             |                             |             |

**4.6. Quantities of school fruit, vegetables and milk supplied/distributed and, if applicable, of other agricultural products that children tasted under educational measures**

**4.6.1 Fresh fruit and vegetables**

|                                   |                       | Quantity | Comments        |
|-----------------------------------|-----------------------|----------|-----------------|
| <b>Fresh fruit and vegetables</b> | <b>Quantity in kg</b> | 68.639   | <i>in annex</i> |
| <i>Of which: Fruit</i>            | <i>Quantity in kg</i> |          |                 |
| <i>Of which: Vegetables</i>       | <i>Quantity in kg</i> |          |                 |

**4.6.2 Processed fruit and vegetables**

|  |                           | Quantity | Comments |
|--|---------------------------|----------|----------|
| <b>Processed fruit and vegetables</b>  | <b>Quantity in kg</b>     |          |          |
|  | <b>Quantity in litres</b> |          |          |
| <i>Of which: Fruit juices</i>          | <i>Quantity in litres</i> |          |          |
| <i>Of which: Fruit purees/compotes</i> | <i>Quantity in kg</i>     |          |          |
| <i>Of which: Dried fruits</i>          | <i>Quantity in kg</i>     |          |          |
| <i>Of which: Vegetable juices</i>      | <i>Quantity in litres</i> |          |          |
| <i>Of which: Vegetable soups</i>       | <i>Quantity in litres</i> |          |          |
| <i>Of which: Other</i>                 | <i>Quantity in kg</i>     |          |          |

**4.6.3 Milk and milk products**

|  |                           | Quantity | Comments |
|--|---------------------------|----------|----------|
| <b>Drinking milk and lactose-free versions</b>                               | <b>Quantity in litres</b> | 32.355   |          |
| <b>Cheese and curd</b>   | <b>Quantity in kg</b>     |          |          |
| <b>Plain yoghurt</b>   | <b>Quantity in kg</b>     |          |          |
| <b>Milk products without added sugar, flavouring, fruit, nuts or cocoa</b>   | <b>Quantity in kg</b>     |          |          |
| <b>Milk products without fruit juice, naturally flavoured</b>                | <b>Quantity in kg</b>     |          |          |
| <b>Milk products with fruit juice, naturally flavoured or non-flavoured</b>  | <b>Quantity in kg</b>     |          |          |
| <b>Milk-based drinks with cocoa, with fruit juice or naturally flavoured</b> | <b>Quantity in litres</b> |          |          |
| <b>Milk products with fruit, naturally flavoured or non-flavoured</b>        | <b>Quantity in kg</b>     |          |          |

**4.6.4 Other agricultural products**

|                        |                           | Quantity | Comments |
|------------------------|---------------------------|----------|----------|
| <b>Olive/olive oil</b> | <b>Quantity in kg</b>     |          |          |
|                        | <b>Quantity in litres</b> |          |          |
| <b>Honey</b>           | <b>Quantity in kg</b>     |          |          |
| <b>Others:</b>         | <b>Quantity in kg</b>     |          |          |



## 5.1 Educational measures carried out

|                 |  | Number of schoolchildren | Comments   |
|-----------------|--|--------------------------|--|
| Type of measure | School gardens   | 4.700                    | <i>in annex</i>                                      |
|                 | Visits to farms, dairies, famers' markets and similar activities | 5.000                    | <i>approximate number</i>                            |
|                 | Tasting classes, cooking workshops, other                        | 6.800                    | <i>breakfast, approximate number</i>                 |
|                 | Lessons, lectures, workshops                                     | 5.000                    | <i>cooking classes, approximate information</i>      |
|                 | Other activities: competitions, games, themed periods ...        | 3.900                    | <i>Project day, Project week, approximate number</i> |

## 5.2 Theme(s) of the educational measures carried out

|          |   | Yes/No | Comments |
|----------|---|--------|----------|
| Theme(s) | Reconnection of children to agriculture | Yes    |          |
|          | Healthy eating habits                   | Yes    |          |
|          | Local food chains                       | Yes    |          |
|          | Organic                                 | Yes    |          |
|          | Sustainable production                  | Yes    |          |
|          | Food waste                              | Yes    |          |
|          | Other: please specify under comments    |        |          |



## 6. Communication activities carried out

|                                |  | Yes/No | Comments        |
|--------------------------------|--|--------|-----------------|
| Activity carried out/tool used | Poster at school premises                                    | Yes    | <i>in annex</i> |
|                                | Poster at other relevant places                              | No     |                 |
|                                | Dedicated website(s)   | No     |                 |
|                                | Informative graphic material                                 | Yes    |                 |
|                                | Information and awareness campaign (TV, radio, social media) | No     |                 |
|                                | Others (e.g. networking activities)                          | No     |                 |



## 7. Authorities and stakeholders involved

|  |                      | Name        | Involved in Planning                    | Involved in Implementation | Involved in Monitoring | Involved in Evaluation | How |  |
|--|----------------------|-------------|---|----------------------------|------------------------|------------------------|-----|--|
| Public authority/<br>Private stakeholder | Agriculture          | Authority   |   |                            |                        |                        |     |  |
|  |                      | Stakeholder |   |                            |                        |                        |     |  |
|  | Health and Nutrition | Authority   |   |                            |                        |                        |     |  |
|  |                      | Stakeholder |   |                            |                        |                        |     |  |
|  | Education            | Authority   | Senatorin für Kinder und Bildung Bremen | Yes                        | Yes                    | No                     | No  | <i>The authority carries out the selection procedure. Monitoring and evaluation is handled by Lower Saxony.</i>    |
|  |                      | Stakeholder | Primary Schools, Nurseries              | No                         | Yes                    | No                     | No  | <i>The selected schools and nurseries include the distribution and consumption of the products in the lessons.</i> |
|  | Other                | Authority   |   |                            |                        |                        |     |  |
|  |                      | Stakeholder |   |                            |                        |                        |     |  |

Annex: EU school scheme poster



