



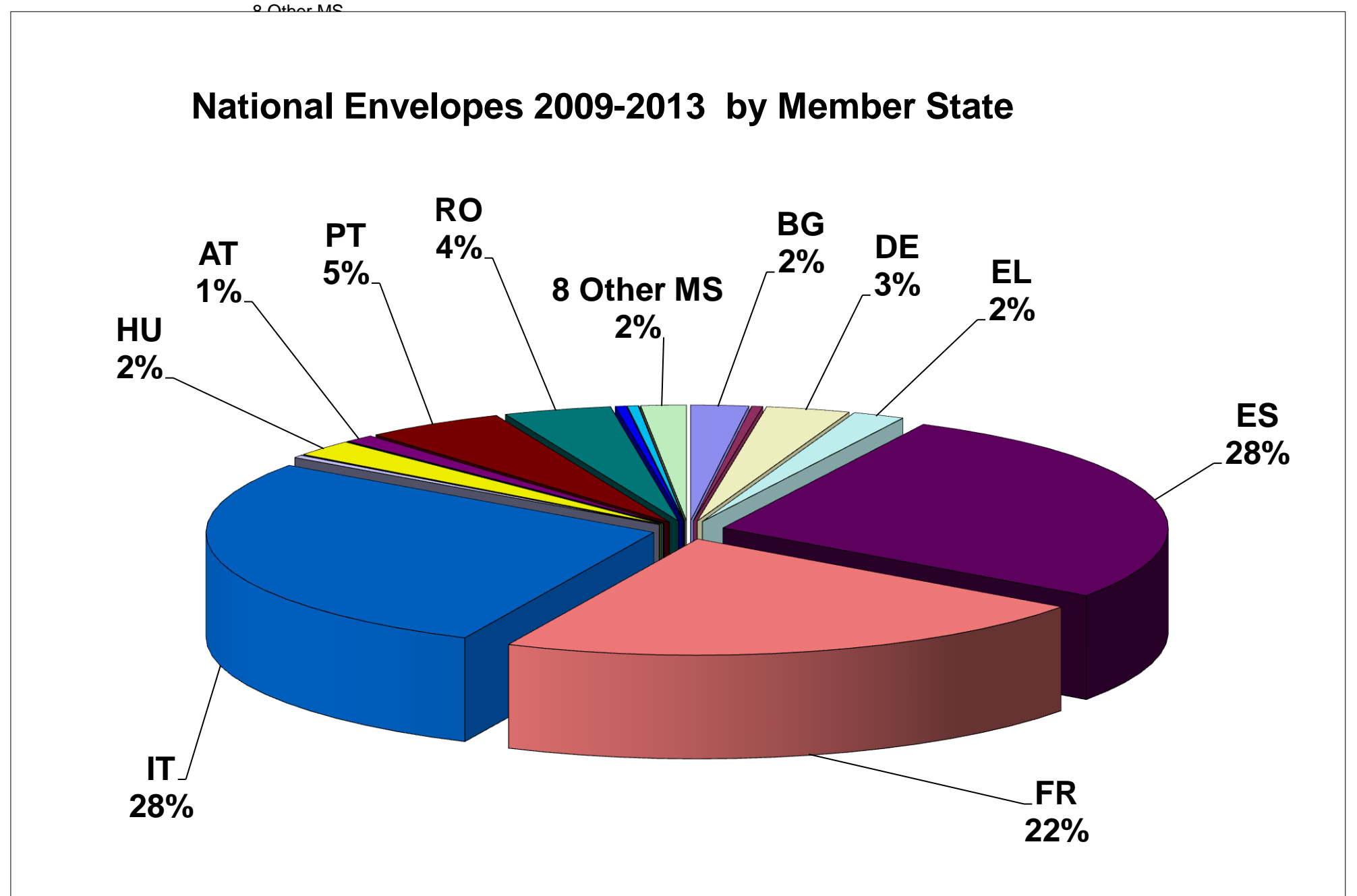
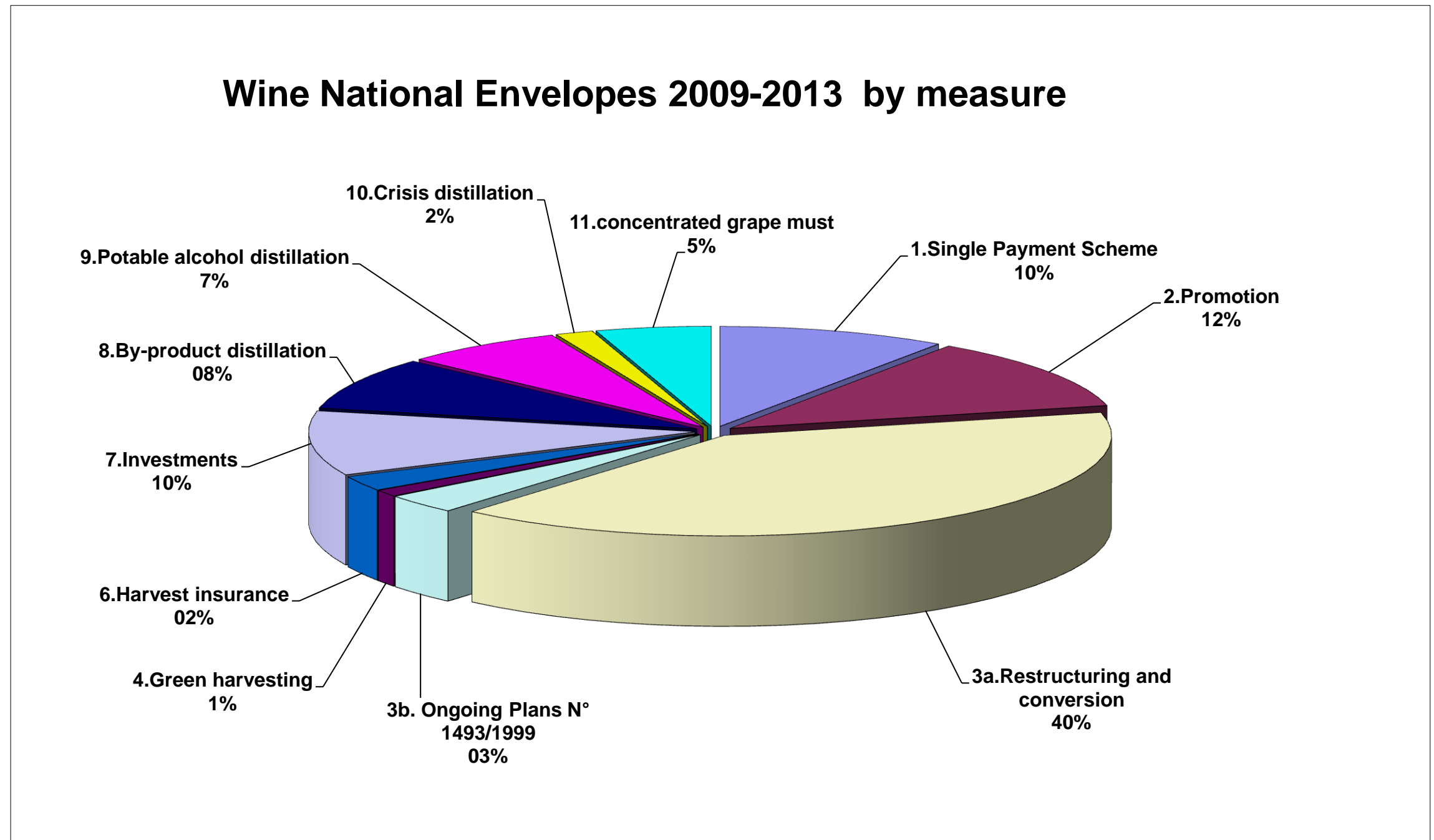
Destinee: European Commission DG Agriculture & Rural development Unit: AGRI-C3 Filing: V ... email: AGRI-C3@Ec.Europa.Eu fax: (00) 322 295.92.52	Wine CMO : Submission of financial table of the national support programme Council Regulation EC 479/2008 Article 6€ Commission Regulation EC 555/2008 Annex IV	2009-2013	
--	---	------------------	--

SITUATION AU 30 juin 2013

Measure : (*)	Member STATES ToTal (in 1000 euros)											Member STATE ToTal (in 1000 euros)						Total E.U. 2009-2013 (in 1000 euros)		
	BG	CZ	DE	EL	ES	FR	IT	CY	LT	LU	HU	MT	AT	PT	RO	SI	SK			UK
(1) (2)																				
1.Single Payment Scheme support in accordance with Article 9				58 000	447 754					2 134		1 455						372	509.715	9,6%
2.Promotion in accordance with Article 10	4 870		6 640	18 167	166 836	136 300	232 312		202				7 000	43 289	3 617	4 444	70		623.747	11,7%
3a.Restructuring and conversion of vineyard in accordance with Article 11	93 173	15 173	70 885	23 151	402 643	440 800	572 352	12 924		114	92 257		13 606	179 781	189 786	16 005	1 794		2.124.443	40,0%
3b. Ongoing Plans in accordance with Regulation EC N° 1493/1999	8 039		2 781		61 065	55 400							4 740	2 970	15 446		16 600		167.041	3,1%
4.Green harvesting in accordance with Article 12								55 440	845							550			56.834	1,1%
5.Mutual funds in accordance with Article 13																			-	
6.Harvest insurance in accordance with Article 14	6 601		6 633				1 700	95 750	585					15 720	1 408		720		129.116	2,4%
7.Investments in enterprises in accordance with Article 15		6 467	74 041		300	290 000	125 510	5 233			17 250		32 417				1 725		552.943	10,4%
8.By-product distillation in accordance with Article 16					159 421	171 300	98 054				8 342			14 582					451.699	8,5%
9.Potable alcohol distillation in accordance with Article 17					249 832		95 507				2 195			10 975					358.509	6,7%
10.Crisis distillation in accordance with Article 18						36 700	47 517												84.217	1,6%
11.Use of concentrated grape must in accordance with Article 19			3 227	2 157		55 200	186 090			230	2 131			6 719	243	390	441		256.828	4,8%
Total:	112 683	21 640	164 207	101 475	1 487 851	1 187 400	1 508 531	19 586	202	2 478	122 175	1 455	57 763	274 036	210 500	21 389	21 349	372	5.315.092	100%
If relevant:	2%	0%	3%	2%	28%	22%	28%	0%	0%	0%	2%	0%	1%	5%	4%	0%	0%	0%	-	
10a.Crisis distillation Article 18(5) State Aid:				-																
New transfer to Rural Development				-												4 200		800		5 000
Regulation (EC) No. 479/2008 Annex II Budget	112 683	21 640	164.252	101 475	1 487 851	1 187 388	1 508 531	19 586	202	2 478	122 175	1 687	57 763	274 035	210 500	25 589	21 349	1 172	5 320 356	

(*) : All the articles indicated in this Annex refer to Regulation (EC) No. 479/2008

V 04.01





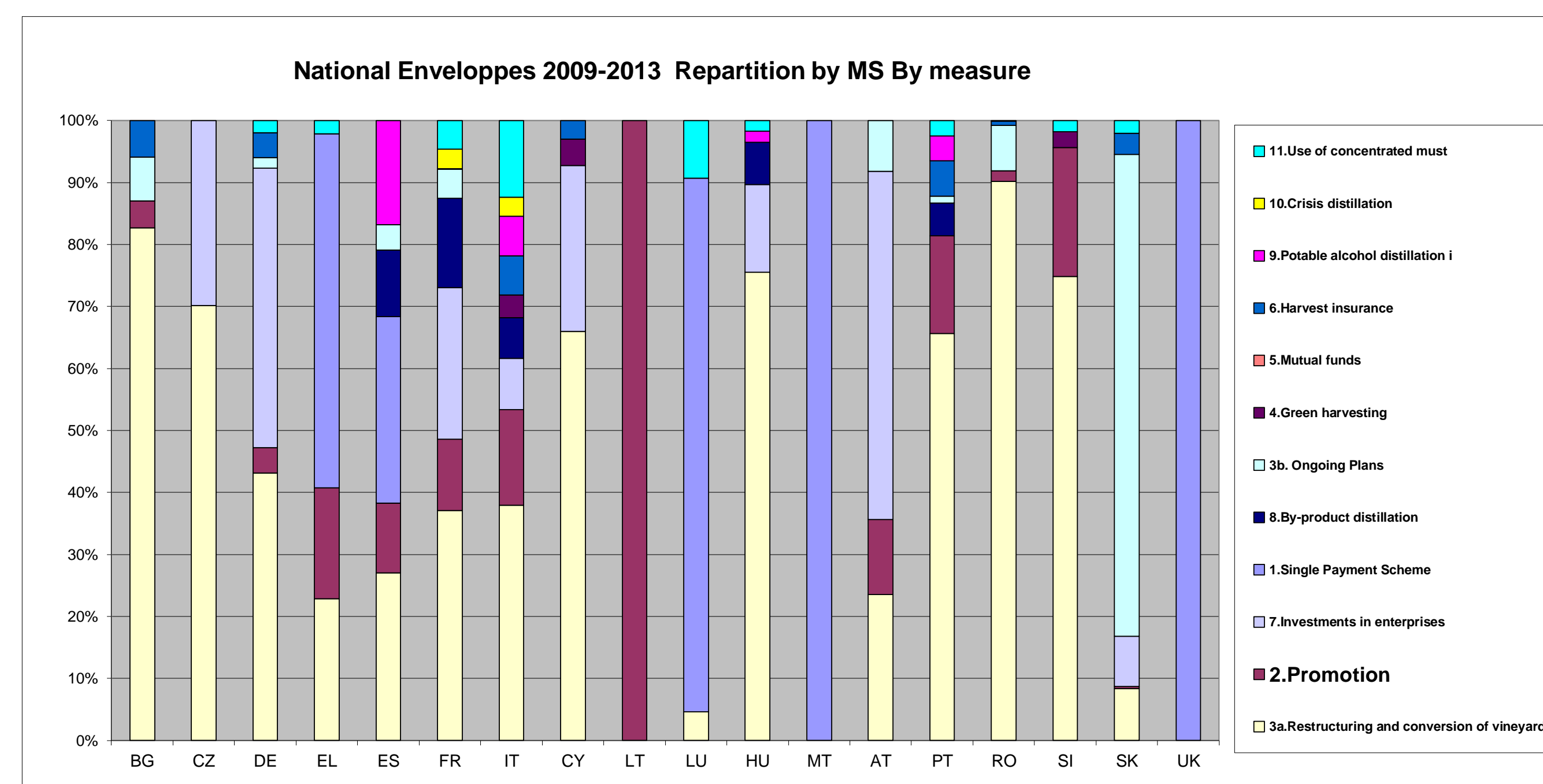
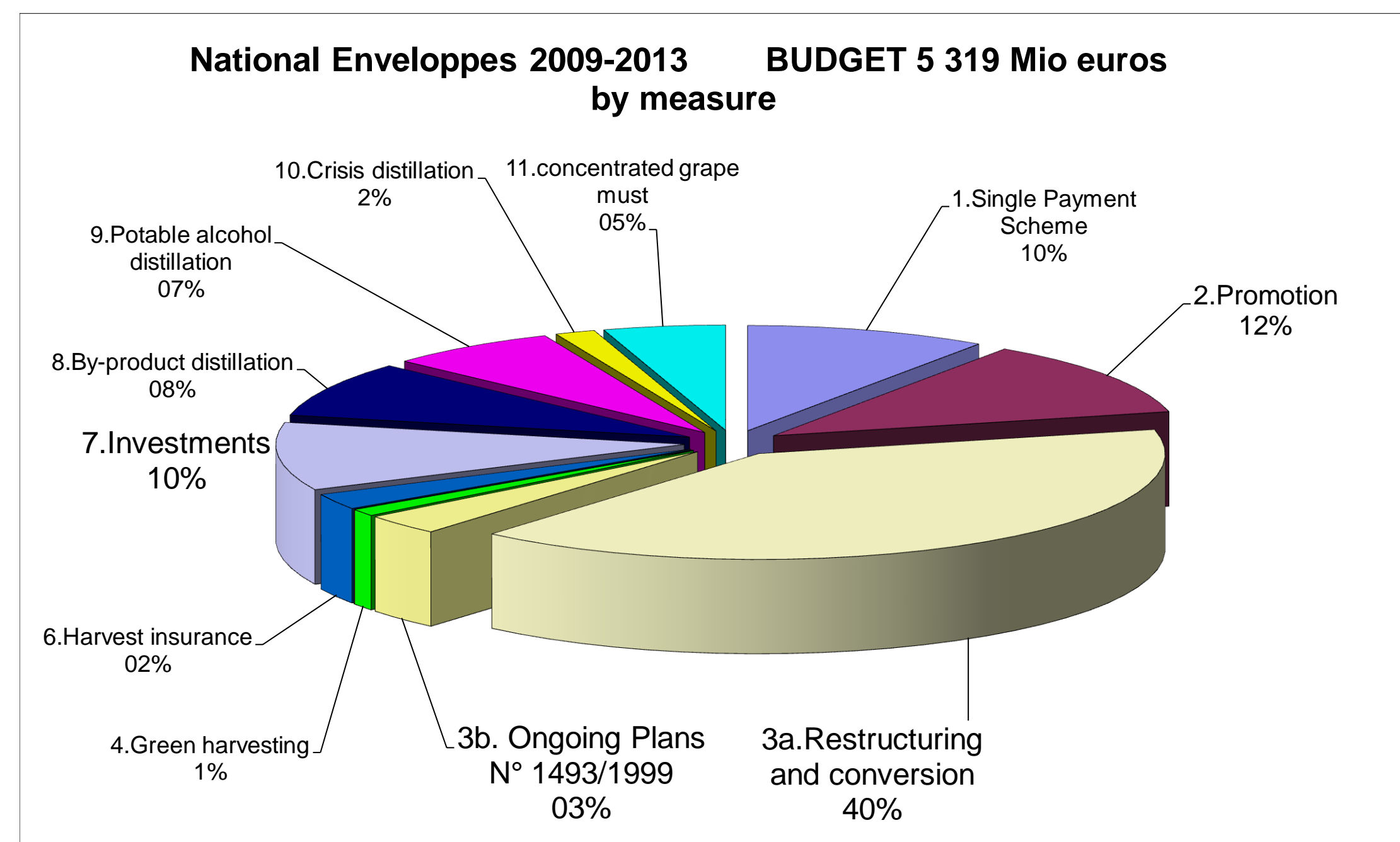
Destinee: European Commission DG Agriculture & Rural development Unit: AGRI-C3 Filing: V... email: AGRI-C3@Ec.Europa.Eu fax: (00) 322 295.92.52	Wine CMO : Submission of financial table of the national support programme Council Regulation EC 479/2008 Article 6€ Commission Regulation EC 555/2008 Annex IV	Destinee: European Commission DG Agriculture & Rural development Unit: AGRI-C3 Filing: V... email: AGRI-C3@Ec.Europa.Eu fax: (00) 322 295.92.52
--	---	--

SITUATION AU 30 juin 2013

Measure : (*)	Member STATES ToTal (in 1000 euros)											Member STATE ToTal (in 1000 euros)							Total E.U. 2009-2013 (in 1000 euros)	Measure : (*)
	BG	CZ	DE	EL	ES	FR	IT	CY	LT	LU	HU	MT	AT	PT	RO	SI	SK	UK		
(1) (2)																				
1.Single Payment Scheme support in accordance with Article 9				57%	30%					86%			86%					32%	10%	
2.Promotion in accordance with Article 10	4%		4%	18%	11%	11%	15%		100%				12%	16%	2%	17%	0%		12%	
3a.Restructuring and conversion of vineyard in accordance with Article 11	83%	70%	43%	23%	27%	37%	38%	66%		5%	76%		24%	66%	90%	63%	8%		40%	
3b. Ongoing Plans in accordance with Regulation EC N° 1493/1999	7%		2%		4%	5%							8%	1%	7%		78%		3%	
4.Green harvesting in accordance with Article 12								4%	4%							2%			1%	
5.Mutual funds in accordance with Article 13																				
6.Harvest insurance in accordance with Article 14	6%		4,0%			0%	6%	3%						6%	1%		3%		2%	
7.Investments in enterprises in accordance with Article 15		30%	45%		0%	24%	8%	27%			14%		56%				8%		10%	
8.By-product distillation in accordance with Article 16					11%	14%	6%				7%			5%					8%	
9.Potable alcohol distillation in accordance with Article 17					17%		6%				2%			4%					7%	
10.Crisis distillation in accordance with Article 18						3%	3%												2%	
11.Use of concentrated grape must in accordance with Article 19			2%	2%		5%	12%			9%	2%			2%	0,1%	2%	2%		5%	
Total:	100%	100%	100%	100%	100%	100%	100%	100%	100%	100%	100%	86%	100%	100%	100%	84%	100%	32%	100%	
If relevant:	0%	0%	0%	0%	0%	0%	0%	0%	0%	0%	0%	0%	0%	0%	0%	0%	0%	0%		
10a.Crisis distillation Article 18(5) State Aid:																				
New transfer to Rural Development																16%		68%	0,09%	
Regulation (EC) No. 479/2008 Annex II Budget	100%	100%	100%	100%	100%	100%	100%	100%	100%	100%	100%	100%	100%	100%	100%	100%	100%	100%	100%	

(*) : All the articles indicated in this Annex refer to Regulation (EC) No. 479/2008

V 04.01





COMMON AGRICULTURAL POLICY
EUROPEAN WINE SECTOR



COMMON AGRICULTURA
EUROPEAN WINE S

Destinee: European Commission DG Agriculture & Rural development Unit: AGRI-C3 Filing: V... email: AGRI-C3@Ec.Europa.Eu fax: (00) 322 295.92.52	Wine CMO : Submission of financial table of the national support programme Council Regulation EC 479/2008 Article 6€ Commission Regulation EC 555/2008 Annex II & IV	2009	
---	--	-------------	--

SITUATION AU 30 juin 2013

Measure : (*)	Member STATES ToTal (in 1000 euros)											Member STATE ToTal (in 1000 euros)						Total E.U. 2009 (in 1000 euros)	
	BG	CZ	DE	EL	ES	FR	IT	CY	LT	LU	HU	MT	AT	PT	RO	SI	SK		UK
(1) (2)																			
1.Single Payment Scheme support in accordance with Article 9																			
2.Promotion in accordance with Article 10			460		10 836	23 000	6 376		30				1 000	2 987	54	544			
3a.Restructuring and conversion of vineyard in accordance with Article 11	9 750	2 979	12 562	12 129	20 066	16 500	83 292	1 851		114	13 802		1 000	26 794	30 381	2 738			
3b. Ongoing Plans in accordance with Regulation EC N° 1493/1999	5 227		2 738		37 265	42 000							3 000	2 970	11 312		2 571		
4.Green harvesting in accordance with Article 12																150			
5.Mutual funds in accordance with Article 13																			
6.Harvest insurance in accordance with Article 14	631		84			1 300									323		60		
7.Investments in enterprises in accordance with Article 15			3 819			11 500		898					3 038						
8.By-product distillation in accordance with Article 16					31 521	35 000	18 000				1 964			2 000					
9.Potable alcohol distillation in accordance with Article 17					114 132		43 635				438			1 149					
10.Crisis distillation in accordance with Article 18						26 000	27 011												
11.Use of concentrated grape must in accordance with Article 19			3 227	2 157		16 700	59 909			230	612			1 902	30	90	307		
Total:	15 608	2 979	22 890	14 286	213 820	172 000	238 223	2 749	30	344	16 816		8 038	37 802	42 100	3 522	2 938		
If relevant:																			
10a.Crisis distillation Article 18(5) State Aid:			-																
New transfer to Rural Development			-															160	
Regulation (EC) No. 479/2008 Annex II Budget	15 608	2 979	22.891	14 286	213 820	171 909	238 223	2 749	30	344	16 816	232	8 038	37 802	42 100	3 522	2 938	160	

(*) : All the articles indicated in this Annex refer to Regulation (EC) No. 479/2008



COMMON AGRICULTURAL POLICY
EUROPEAN WINE SECTOR



COMMON AGRICULTURAL POLICY
EUROPEAN WINE SECTOR

Destinee: European Commission DG Agriculture & Rural development Unit: AGRI-C3 Filing: V ... email: AGRI-C3@Ec.Europa.Eu fax: (00) 322 295.92.52	Wine CMO : Submission of financial table of the national support programme 2010 Council Regulation EC 479/2008 Article 6€ Commission Regulation EC 555/2008 Annex IV	
---	---	--

SITUATION AU 30 juin 2013

Measure : (*)	Member STATES ToTal (in 1000 euros)											Member STATE ToTal (in 1000 euros)							Total E.U. 2010 (in 1000 euros)
	BG	CZ	DE	EL	ES	FR	IT	CY	LT	LU	HU	MT	AT	PT	RO	SI	SK	UK	
(1) (2)																			
1.Single Payment Scheme support in accordance with Article 9				13 000	19 507					467		318						61	
2.Promotion in accordance with Article 10			690	6 167	28 000	27 000	25 296		37				1 500	5 595	109	900			
3a.Restricturing and conversion of vineyard in accordance with Article 11	17 302	3 076	14 967		59 412	97 000	93 827	1 491		19 110			3 000	38 232	37 414	2 670	44		
3b. Ongoing Plans in accordance with Regulation EC N° 1493/1999	1 932		43		11 300	6 000							1 000		4 134		3 669		
4.Green harvesting in accordance with Article 12									18 226	256						100			
5.Mutual funds in accordance with Article 13																			
6.Harvest insurance in accordance with Article 14	2 000		1 300			200	30 861	83							361		100		
7.Investments in enterprises in accordance with Article 15		1 000	13 961			41 000		1 874					5 388				75		
8.By-product distillation in accordance with Article 16					31 000	36 000	23 586			1 628				3 200					
9.Potable alcohol distillation in accordance with Article 17					135 000		29 320			1 757				3 400					
10.Crisis distillation in accordance with Article 18						7 600	12 197												
11.Use of concentrated grape must in accordance with Article 19						12 000	64 951			519				1 200	81	100	134		
Total:	21 234	4 076	30 961	19 167	284 219	226 800	298 263	3 704	37	467	23 014	318	10 888	51 627	42 100	3 770	4 022	61	
If relevant:																			
10a.Crisis distillation Article 18(5) State Aid:				-															
New transfer to Rural Development				-											1 050		160		
Regulation (EC) No. 479/2008 Annex II Budget	21 234	4 076	30.963	19 167	284 219	226 814	298 263	3 704	37	467	23 014	318	10 888	51 627	42 100	4 820	4 022	221	

(*) : All the articles indicated in this Annex refer to Regulation (EC) No. 479/2008



COMMON AGRICULTURAL POLICY
EUROPEAN WINE SECTOR



COMMON AGRICULTURAL POLICY
EUROPEAN WINE SECTOR

Destinee: European Commission DG Agriculture & Rural development Unit: AGRI-C3 Filing: V... email: AGRI-C3@Ec.Europa.Eu fax: (00) 322 295.92.52	Wine CMO : Submission of financial table of the national support programme	2011	
---	---	-------------	--

SITUATION AU 30 juin 2013

Measure : (*)	Member STATES ToTal (in 1000 euros)											Member STATE ToTal (in 1000 euros)							Total E.U. 2011 (in 1000 euros)
	BG	CZ	DE	EL	ES	FR	IT	CY	LT	LU	HU	MT	AT	PT	RO	SI	SK	UK	
(1) (2)																			
1.Single Payment Scheme support in accordance with Article 9				13 000	142 749					485		329						67	156.630
2.Promotion in accordance with Article 10	2 200		1 790	4 000	38 000	30 000	49 236		45				1 500	14 407	806	900			142.884
3a.Restructuring and conversion of vineyard in accordance with Article 11	16 892	2 907	14 247	2 840	54 789	112 000	97 472	2 474			13 809		3 000	29 945	40 953	2 837	200		394.364
3b. Ongoing Plans in accordance with Regulation EC N° 1493/1999	880				11 500	3 700							500				3 580		20.160
4.Green harvesting in accordance with Article 12							26 819	523								100			27.442
5.Mutual funds in accordance with Article 13																			-
6.Harvest insurance in accordance with Article 14	2 050		1 902			200	24 889	115							265		100		29.521
7.Investments in enterprises in accordance with Article 15		1 310	14 162			37 500	19 409	690			7 500		6 313				280		87.163
8.By-product distillation in accordance with Article 16					31 300	26 000	20 000			2 000				2 580					81.880
9.Potable alcohol distillation in accordance with Article 17					700		12 914							4 288					17.902
10.Crisis distillation in accordance with Article 18						3 100	8 309												11.409
11.Use of concentrated grape must in accordance with Article 19						11 500	35 087				500			2 237	77	100			49.501
Total:	22 022	4 217	32 101	19 840	279 038	224 000	294 135	3 801	45	485	23 809	329	11 313	53 457	42 100	3 937	4 160	67	1.018.856
If relevant:																			-
10a.Crisis distillation Article 18(5) State Aid:				-															
New transfer to Rural Development				-												1 050		160	1.210
Regulation (EC) No. 479/2008 Annex II Budget	22 022	4 217	32 190	19 840	279 038	224 055	294 135	3 801	45	485	23 809	329	11 313	53 457	42 100	4 987	4 160	227	1.020.210

(*) : All the articles indicated in this Annex refer to Regulation (EC) No. 479/2008



COMMON AGRICULTURAL POLICY
EUROPEAN WINE SECTOR



Destinee: European Commission DG Agriculture & Rural development Unit: AGRI-C3 Filing: V... email: AGRI-C3@Ec.Europa.Eu fax: (00) 322 295.92.52	Wine CMO : Submission of financial table of the national support programme	2012	
---	---	-------------	--

SITUATION AU 30 juin 2013

Measure : (*)	Member STATES ToTal (in 1000 euros)											Member STATE ToTal (in 1000 euros)						Total E.U. 2012 (in 1000 euros)	
	BG	CZ	DE	EL	ES	FR	IT	CY	LT	LU	HU	MT	AT	PT	RO	SI	SK		UK
(1) (2)																			
1.Single Payment Scheme support in accordance with Article 9				16 000	142 749					595		407						124	159.875
2.Promotion in accordance with Article 10			1 980	4 000	44 000	40 000	66 099		45				1 500	9 500	1 159	1 000	20		169.303
3a.Restricting and conversion of vineyard in accordance with Article 11	26 127	3 087	18 065	4 237	136 651	103 000	154 183	3 471			22 955		5 146	39 986	40 657	3 919	300		561.783
3b. Ongoing Plans in accordance with Regulation EC N° 1493/1999					500	2 000							200				4 007		6.707
4.Green harvesting in accordance with Article 12							8 935	66								100			9.101
5.Mutual funds in accordance with Article 13																			-
6.Harvest insurance in accordance with Article 14	950		1 975				20 000	201						9 739	229		200		33.293
7.Investments in enterprises in accordance with Article 15		2 130	17 302		300	80 000	34 708	952			4 000		7 000				620		147.012
8.By-product distillation in accordance with Article 16					33 800	44 300	21 468				2 000			3 247					104.815
9.Potable alcohol distillation in accordance with Article 17							9 638							2 138					11.776
10.Crisis distillation in accordance with Article 18																			-
11.Use of concentrated grape must in accordance with Article 19						15 000	26 143				500			1 380	56	100			43.179
Total:	27 077	5 217	39 322	24 237	358 000	284 300	341 174	4 689	45	595	29 455	407	13 846	65 990	42 100	5 119	5 147	124	1.246.844
If relevant:																			
10a.Crisis distillation Article 18(5) State Aid:																			
New transfer to Rural Development																1 050		160	1.210
Regulation (EC) No. 479/2008 Annex II Budget	27 077	5 217	39.341	24 237	358 000	284 299	341 174	4 689	45	595	29 455	407	13 846	65 989	42 100	6 169	5 147	284	1.248.071

(*) : All the articles indicated in this Annex refer to Regulation (EC) No. 479/2008



COMMON AGRICULTURAL POLICY
EUROPEAN WINE SECTOR



COMMON AGRICULTURAL POLICY
EUROPEAN WINE SECTOR

	Wine CMO : Submission of financial table of the national support programme Council Regulation EC 479/2008 Article 6€ Commission Regulation EC 555/2008 Annex IV	2013	
--	--	------	--

SITUATION AU 30 juin 2013

Measure : (*)	Member STATES ToTal (in 1000 euros)											Member STATE ToTal (in 1000 euros)						Total E.U. 2013 (in 1000 euros)	
	BG	CZ	DE	EL	ES	FR	IT	CY	LT	LU	HU	MT	AT	PT	RO	SI	SK		UK
(1) (2)																			
1.Single Payment Scheme support in accordance with Article 9				16 000	142 749					587		401						120	159.857
2.Promotion in accordance with Article 10	2 670		1 720	4 000	46 000	16 300	85 305		45				1 500	10 800	1 489	1 100	50		170.979
3a.Restricturing and conversion of vineyard in accordance with Article 11	23 102	3 124	11 044	3 945	131 725	112 300	143 578	3 637			22 581		1 460	44 824	40 381	3 841	1 250		546.792
3b. Ongoing Plans in accordance with Regulation EC N° 1493/1999					500	1 700							40				2 772		5.012
4.Green harvesting in accordance with Article 12							1 459									100	0		1.559
5.Mutual funds in accordance with Article 13																	0		-
6.Harvest insurance in accordance with Article 14	970		1 372				20 000	187						5 981	230		260		29.000
7.Investments in enterprises in accordance with Article 15		2 027	24 797				120 000	71 393	820		5 750		10 678				750		236.215
8.By-product distillation in accordance with Article 16					31 800	30 000	15 000				750			3 555					81.105
9.Potable alcohol distillation in accordance with Article 17																			-
10.Crisis distillation in accordance with Article 18																			-
11.Use of concentrated grape must in accordance with Article 19																			-
Total:	26 742	5 151	38 933	23 945	352 774	280 300	336 736	4 643	45	587	29 081	401	13 678	65 160	42 100	5 041	5 082	120	1.230.519
If relevant:																			-
10a.Crisis distillation Article 18(5) State Aid:																			
New transfer to Rural Development																1 050		160	1.210
Regulation (EC) No. 479/2008 Annex II Budget	26 742	5 151	38.867	23 945	352 774	280 311	336 736	4 643	45	587	29 081	401	13 678	65 160	42 100	6 091	5 082	280	1.231.674

(*) : All the articles indicated in this Annex refer to Regulation (EC) No. 479/2008

V 01.00



COMMON AGRICULTURAL POLICY

EUROPEAN WINE SECTOR



Destinee: European Commission DG Agriculture & Rural development Unit: AGRI-C3 Filing: V ... email: AGRI-C3@Ec.Europa.Eu	Wine CMO : Submission of financial table of the national support programme 2009-2013 Council Regulation EC 479/2008 Article 6€ Commission Regulation EC 555/2008 Annex IV
--	--

SITUATION AU 30 juin 2013

in 1000 euros		Total 2009	Total 2010	Total 2011	Total 2012	Total 2013	Total 2009-2013	
(1) (2)								
1.Single Payment Scheme			33 353	156 630	159 875	159 857	509 715	10%
2.Promotion		45 288	95 294	142 884	169 303	170 979	623 747	12%
3a.Restricturing and conversion		233 958	387 545	394 364	561 783	546 792	2 124 443	40%
3b. Ongoing Plans N° 1493/1999		107 083	28 079	20 160	6 707	5 012	167 041	3%
4.Green harvesting		150	18 582	27 442	9 101	1 559	56 834	1%
5.Mutual funds								
6.Harvest insurance		2 398	34 904	29 521	33 293	29 000	129 116	2%
7.Investments		19 255	63 298	87 163	147 012	236 215	552 943	10%
8.By-product distillation		88 485	95 414	81 880	104 815	81 105	451 699	8%
9.Potable alcohol distillation		159 354	169 477	17 902	11 776		358 509	7%
10.Crisis distillation		53 011	19 797	11 409			84 217	2%
11.concentrated grape must		85 163	78 985	49 501	43 179		256 828	5%
Total 1-11		794 145	1 024 728	1 018 856	1 246 844	1 230 519	5 315 092	100%
New transfer to Rural Development		160	1 210	1 210	1 210	1 210	5 000	0,1%
Total:		794 305	1 025 938	1 020 066	1 248 054	1 231 729	5 320 092	100%

If relevant:

10a.Crisis distillation Article 18(5) State Aid:						1071 872	
--	--	--	--	--	--	----------	--

Financial limits (Dec 2007 compromise)		794 447	1 025 953	1 020 212	1 248 069	1 231 674	5 320 355
utilisation %		100,0%	100,0%	100,0%	100,0%	100,0%	100,0%



COMMON AGRICULTURAL POLICY

EUROPEAN WINE SECTOR



Destinee: European Commission DG Agriculture & Rural development Unit: AGRI-C3 Filing: V ... email: AGRI-C3@Ec.Europa.Eu	Wine CMO : Submission of financial table of the national support programme Council Regulation EC 479/2008 Article 6€ Commission Regulation EC 555/2008 Annex IV	2009-2013
--	---	------------------

SITUATION AU 30 juin 2013

in Mio euros	Total 2009	Total 2010	Total 2011	Total 2012	Total 2013	Total 2009-2013	
(1) (2)							
1.Single Payment Scheme		33	157	160	160	510	10%
2.Promotion	45	95	143	169	171	624	12%
3.Restructuring and conversion	341	416	415	568	552	2 291	43%
7.Investments	19	63	87	147	236	553	10%
8.Distillations	301	285	111	117	81	894	17%
others	88	132	106	86	31	443	8%
Total 1-11	794	1 025	1 019	1 247	1 231	5 315	100%



COMMON AGRICULTURAL POLICY

EUROPEAN WINE SECTOR



Destinee: European Commission DG Agriculture & Rural development Unit: AGRI-C3 Filing: V ... email: AGRI-C3@Ec.Europa.Eu fax: (00) 322 295.92.52	Wine CMO : Submission of financial table of the national support programme 2009-2013 Council Regulation EC 479/2008 Article 6€ Commission Regulation EC 555/2008 Annex IV
---	--

SITUATION AU 30 juin 2013

70	Total 2009 (in 1000 euros)	Total 2010 (in 1000 euros)	Total 2011 (in 1000 euros)	Total 2012 (in 1000 euros)	Total 2013 (in 1000 euros)	Total 2009-2013 (in 1000 euros)
(1) (2)						
1.Single Payment Scheme		3%	15%	13%	13%	10%
2.Promotion	6%	9%	14%	14%	14%	12%
3a.Restructuring and conversion	29%	38%	39%	45%	44%	40%
3b. Ongoing Plans N° 1493/1999	13%	3%	2%	1%	0%	3%
4.Green harvesting	0%	2%	3%	1%	0%	1%
5.Mutual funds						
6.Harvest insurance	0%	3%	3%	3%	2%	2%
7.Investments	2%	6%	9%	12%	19%	10%
8.By-product distillation	11%	9%	8%	8%	7%	8%
9.Potable alcohol distillation	20%	17%	2%	1%		7%
10.Crisis distillation	7%	2%	1%			2%
11.concentrated grape must	11%	8%	5%	3%		5%
Total 1-11	100%	100%	100%	100%	100%	100%
New transfer to Rural Development	0%	0%	0%	0%	0%	0%
Total:	100%	100%	100%	100%	100%	100%



COMMON AGRICULTURAL POLICY

EUROPEAN WINE SECTOR



Destinee: European Commission DG Agriculture & Rural development Unit: AGRI-C3 Filing: V ... email: AGRI-C3@Ec.Europa.Eu fax: (00) 322 295.92.52	Wine CMO : Submission of financial table of the national support programme 2009-2013 Council Regulation EC 479/2008 Article 6€ Commission Regulation EC 555/2008 Annex IV
---	---

SITUATION AU 30 juin 2013

Distillation Measures		Total 2009 (in 1000 euros)	Total 2010 (in 1000 euros)	Total 2011 (in 1000 euros)	Total 2012 (in 1000 euros)	Total 2013 (in 1000 euros)	Total 2009-2013 (in 1000 euros)	
8.By-product distillation	ES	31 521	31 000	31 300	33 800	#REF!	159 421	
	FR	35 000	36 000	26 000	44 300	30 000	171 300	
	IT	18 000	23 586	20 000	21 468	15 000	98 054	
	Others	3 964	4 828	4 580	5 247	#REF!	22 924	
	EU-27	88 485	95 414	81 880	104 815	81 105	451 699	8%
9.Potable alcohol distillation	ES	114 132	135 000	700			249 832	
	FR							
	IT	43 635	29 320	12 914	9 638		95 507	
	Others	1 587	5 157	4 288	2 138		13 170	
	EU-27	159 354	169 477	17 902	11 776		358 509	7%
10.Crisis distillation	ES							
	FR	26 000	7 600	3 100			36 700	
	IT	27 011	12 197	8 309			47 517	
	Others							
	EU-27	53 011	19 797	11 409			84 217	2%
Total Distillation measures		300 850	284 688	111 191	116 591	81 105	894 425	17%



COMMON AGRICULTURAL POLICY EUROPEAN WINE SECTOR

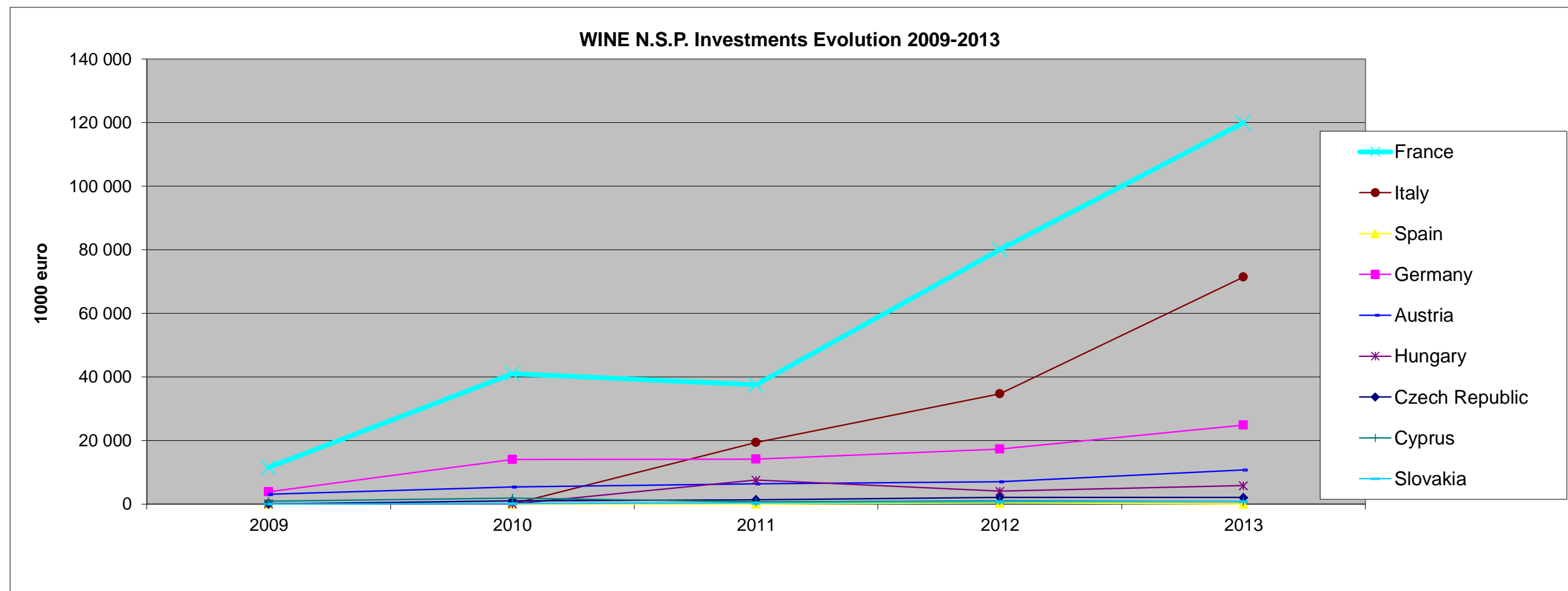


Wine CMO : financial table of the national support programme 2009-2013
 Council Regulation EC 479/2008 Article 6€ Commission Regulation EC 555/2008 Annex IV

in 1000 euros	Total 2009	Total 2010	Total 2011	Total 2012	Total 2013	Total 2009-2013	% of N.S..P
7.Investments	19 255	63 298	87 163	147 012	236 215	552 943	10%

Czech Republic
 Germany
 Spain
 France
 Hungary
 Italy
 Cyprus
 Austria
 Slovakia

	1 000	1 310	2 130	2 027	6 467	30%
3 819	13 961	14 162	17 302	24 797	74 041	45%
			300		300	0%
11 500	41 000	37 500	80 000	120 000	290 000	24%
		7 500	4 000	5 750	17 250	14%
		19 409	34 708	71 393	125 510	8%
898	1 874	690	952	820	5 233	27%
3 038	5 388	6 313	7 000	10 678	32 417	56%
	75	280	620	750	1 725	8%





COMMON AGRICULTURAL POLICY
EUROPEAN WINE SECTOR



AGRI-C3 Filing: VR 22	Wine CMO :Financial table of the national support programme 2009-2013 Art. 10 Promotion ANNEX IV
--------------------------	---

SITUATION AU 30 juin 2013

	Total 2009 (in 1000 euros)	Total 2010 (in 1000 euros)	Total 2011 (in 1000 euros)	Total 2012 (in 1000 euros)	Total 2013 (in 1000 euros)	Total 2009-2013 (in 1000 euros)	
BG			2 200		2 670	4 870	1%
CZ							
DE	460	690	1 790	1 980	1 720	6 640	1%
EL		6 167	4 000	4 000	4 000	18 167	3%
ES	10 836	28 000	38 000	44 000	46 000	166 836	27%
FR	23 000	27 000	30 000	40 000	16 300	136 300	22%
IT	6 376	25 296	49 236	66 099	85 305	232 312	37%
CY							
LT	30	37	45	45	45	202	0%
LU							
HU							
MT							
AT	1 000	1 500	1 500	1 500	1 500	7 000	1%
PT	2 987	5 595	14 407	9 500	10 800	43 289	
RO	54	109	806	1 159	1 489	3 617	
SI	544	900	900	1 000	1 100	4 444	
SK				20	50	70	
UK							
Total EU-27:	45 288	95 294	142 884	169 303	170 979	623 747	100%



COMMON AGRICULTURAL POLICY EUROPEAN WINE SECTOR

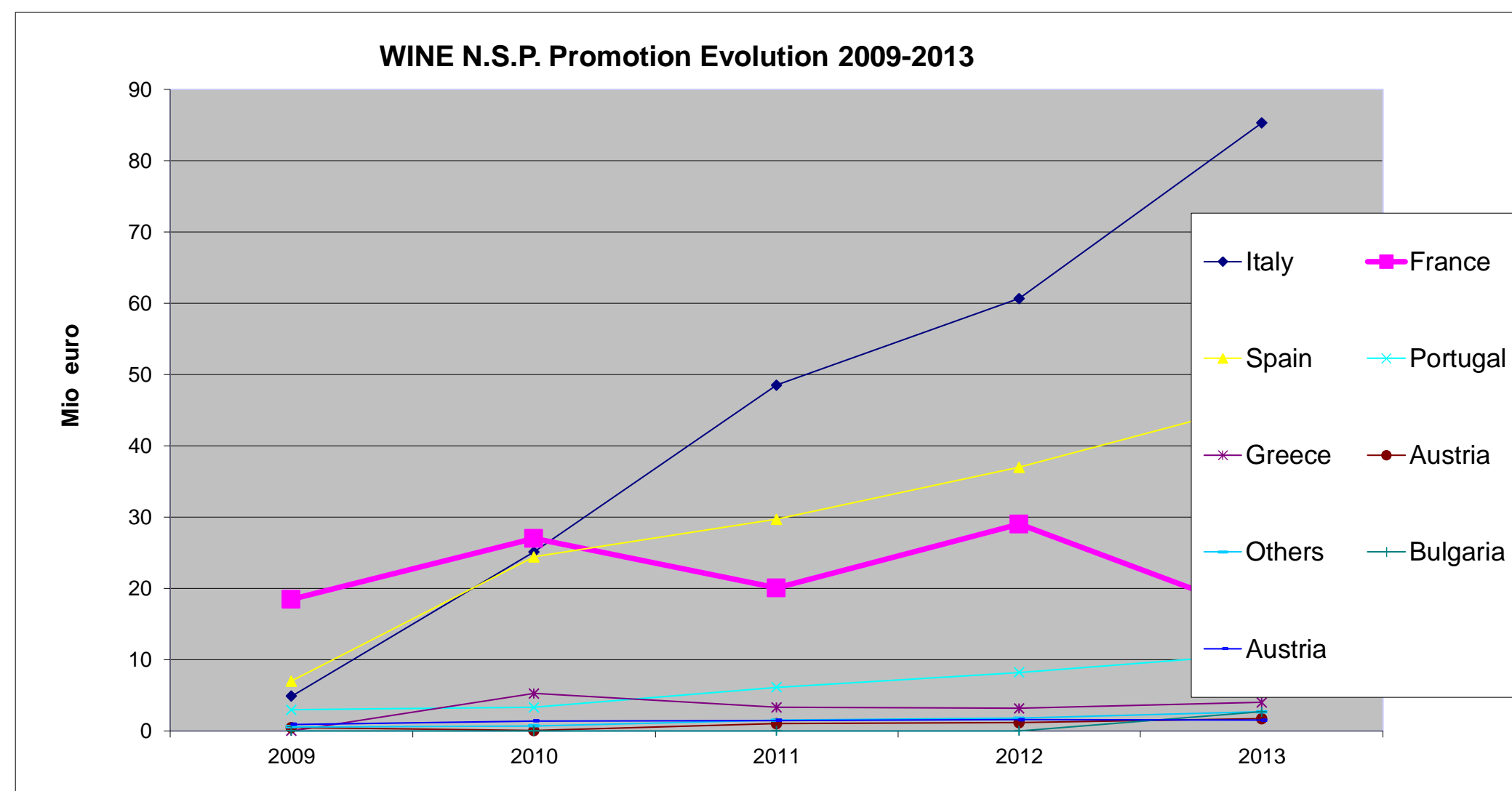


Wine CMO : financial table of the national support programme 2009-2013
 Council Regulation EC 479/2008 Article 6€ Commission Regulation EC 555/2008 Annex IV

in Mio euros	Total 2009 execution	Total 2010 execution	Total 2011	Total 2012	Total 2013	Total 2009-2013	% of N.S..P
PROMOTION	35	87	112	143	171	548	12%

SITUATION AU 30 juin 2010

Italy	5	25	49	61	85	224	15%
France	18	27	20	29	16	111	9%
Spain	7	24	30	37	46	144	10%
Portugal	3	3	6	8	11	31	11%
Austria	1	1	1	2	2	7	12%
Greece		5	3	3	4	16	13%
Bulgaria					3	3	2%
Austria	0	0	1	1	2	4	4%
Others	1	1	2	2	3	7	1%





COMMON AGRICULTURAL POLICY
EUROPEAN WINE SECTOR



Wine CMO : financial table of the national support programme 2009-2013
Council Regulation EC 479/2008 Article 6€ Commission Regulation EC 555/2008 Annex IV

in 1000 euros	Total 2009	Total 2010	Total 2011	Total 2012	Total 2013	Total 2009-2013	% of N.S..P
Green Harvesting	150	18 582	27 442	9 101	1 559	56 834	1,1%

Italy		18 226	26 819	8 935	1 459	55 440	3,7%
Cyprus		256	523	66		845	4,3%
Slovenia	150	100	100	100	100	550	2,6%



COMMON AGRICULTURAL POLICY EUROPEAN WINE SECTOR

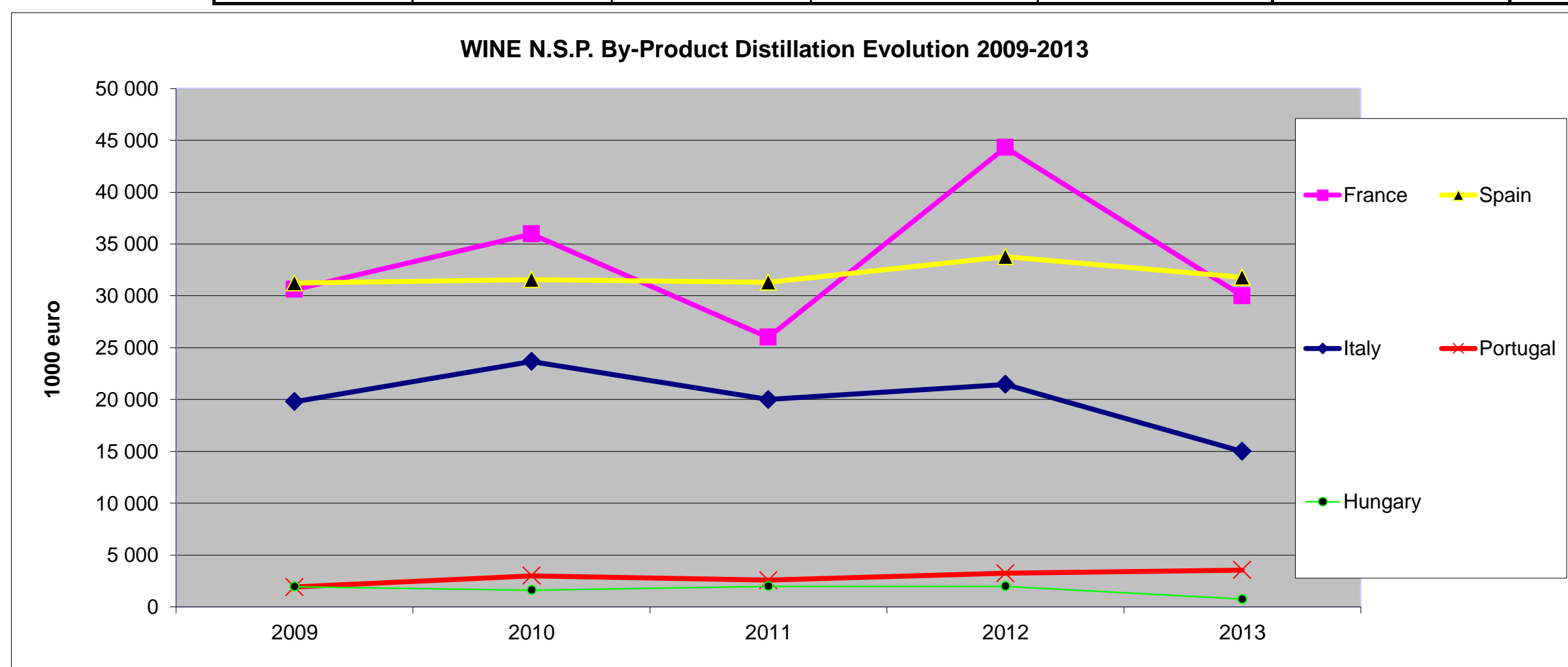


Wine CMO : financial table of the national support programme 2009-2013
Council Regulation EC 479/2008 Article 6€ Commission Regulation EC 555/2008 Annex IV

in 1000 euros	Total 2009 execution	Total 2010 execution	Total 2011	Total 2012	Total 2013	Total 2009-2013	% of N.S..P
By-Product Distillation	85 493	95 856	81 880	104 815	81 105	449 149	12%

SITUATION AU 30 juin 2010

France	30 594	35 970	26 000	44 300	30 000	166 863	14%
Spain	31 219	31 558	31 300	33 800	31 800	159 676	11%
Italy	19 800	23 688	20 000	21 468	15 000	99 956	7%
Portugal	1 918	3 012	2 580	3 247	3 555	14 312	5%
Hungary	1 963	1 628	2 000	2 000	750	8 341	3%
Germany							
Bulgaria							
Austria							
Hungary							



Wine CMO : Submission of financial table of the national support programmes

NATIONAL SUPPORT PROGRAMMES
 Commission Regulation EC 555/2008 Art. 3

Annex IV -- TRANSFERS OF FUNDS TO S.P.S.

ToTal (in euros)	2010	2011	2012	2013	ToTAL	% NSP
BG						
CZ						
DE						
EL	13 000 000	13 000 000	16 000 000	16 000 000	58 000 000	57%
ES	19 507 000	142 749 000	142 749 000	142 749 000	447 754 000	30%
FR						
IT						
CY						
LT						
LU	467 000	485 000	595 000	587 000	2 134 000	86%
HU						
MT	318 000	329 000	407 000	401 000	1 455 000	100%
AT						
PT						
RO						
SI						
SK						
UK	61 000	67 000	124 000	120 000	372 000	100%
EU-27	33 353 000	156 630 000	159 875 000	159 857 000	509 715 000	10%



COMMON AGRICULTURAL POLICY
EUROPEAN WINE SECTOR



AGRI-C3 Filing: VR 22	Wine CMO :Financial table of the national support programme 2009-2013 Council Regulation EC 479/2008 Transfers to R.D.
--------------------------	--

SITUATION AU 30 juin 2013

	Total 2009 (in 1000 euros)	Total 2010 (in 1000 euros)	Total 2011 (in 1000 euros)	Total 2012 (in 1000 euros)	Total 2013 (in 1000 euros)	Total 2009-2013 (in 1000 euros)	
BG							
CZ							
DE							
EL							
ES	15 491	30 950	46 441	46 441	46 441	185 764	38%
FR	11 849	23 663	35 512	35 512	35 512	142 048	29%
IT	13 160	26 287	39 447	39 447	39 447	157 788	32%
CY							
LT							
LU							
HU							
MT							
AT							
PT							
RO							
SI		1 050	1 050	1 050	1 050	4 200	
SK							
UK	160	160	160	160	160	800	0,2%
Total EU-27:	40 660	82 110	122 610	122 610	122 610	490 600	100%



COMMON AGRICULTURAL POLICY
EUROPEAN WINE SECTOR



Destinee: European Commission
DG Agriculture & Rural development
Unit: AGRI-C3 Filing: V ...
email: AGRI-C3@Ec.Europa.Eu
fax: (00) 322 295.92.52

**Wine CMO : Submission of financial table
of the national support programme**
Council Regulation EC 479/2008 Article 6(e)
Commission Regulation EC 555/2008 Annex IV

Bulgaria

SITUATION AU 30 juin 2013

Measure : (*)	Financial Year:					Total (in 1000 euros)
	2009	2010	2011	2012	2013	
(1) (2)	(3)	(4)	(5)	(6)	(7)	(8)
1.Single Payment Scheme support in accordance with Article 9						
2.Promotion in accordance with Article 10			2 200		2 670	4 870
3a.Restructuring and conversion of vineyard in accordance with Article 11	9 750	17 302	16 892	26 127	23 102	93 173
3b. Ongoing Plans in accordance with Regulation EC N° 1493/1999	5 227	1 932	880			8 039
4.Green harvesting in accordance with Article 12						
5.Mutual funds in accordance with Article 13						
6.Harvest insurance in accordance with Article 14	631	2 000	2 050	950	970	6 601
7.Investments in enterprises in accordance with Article 15						
8.By-product distillation in accordance with Article 16						
9.Potable alcohol distillation in accordance with Article 17						
10.Crisis distillation in accordance with Article 18						
11.Use of concentrated grape must in accordance with Article 19						
Total:	15 608	21 234	22 022	27 077	26 742	112 683

If relevant:

10a.Crisis distillation Article 18(5) State Aid:	0	0	0	0	0	0
--	---	---	---	---	---	---

Sender: Responsible Organisation: Ministry of Agriculture/ Paying Agency
Direction/Unit:
Address:
Contact Person1: email:
Contact Person2: email:

Print

(*) : All the articles indicated in this Annex refer to Regulation (EC) No. 479/2008



COMMON AGRICULTURAL POLICY
EUROPEAN WINE SECTOR



Destinee: European Commission
DG Agriculture & Rural development
Unit: AGRI-C3 Filing: V ...
email: AGRI-C3@Ec.Europa.Eu
fax: (00) 322 295.92.52

**Wine CMO : Submission of financial table
of the national support programme**
Council Regulation EC 479/2008 Article 6(e)
Commission Regulation EC 555/2008 Annex IV

Czech Republic

SITUATION AU 30 juin 2013

Measure : (*)	Financial Year:					Total (in 1000 euros)
	2009	2010	2011	2012	2013	
(1) (2)	(3)	(4)	(5)	(6)	(7)	(8)
1.Single Payment Scheme support in accordance with Article 9						,
2.Promotion in accordance with Article 10						,
3a.Restructuring and conversion of vineyard in accordance with Article 11	2 979,	3 076,	2 907,09	3087	3 123,95	15 173,04
3b. Ongoing Plans in accordance with Regulation EC N° 1493/1999	,	,	,			,
4.Green harvesting in accordance with Article 12						,
5.Mutual funds in accordance with Article 13						,
6.Harvest insurance in accordance with Article 14						,
7.Investments in enterprises in accordance with Article 15	,	1 000,	1 309,91	2130,00	2 027,05	6 466,96
8.By-product distillation in accordance with Article 16						,
9.Potable alcohol distillation in accordance with Article 17						,
10.Crisis distillation in accordance with Article 18						,
11.Use of concentrated grape must in accordance with Article 19					,	,
Total:	2 979,	4 076,	4 217,	5 217	5 151,	21 640,

If relevant:

10a.Crisis distillation Article 18(5) State Aid:	0	0	0	0	0	0
--	---	---	---	---	---	---

Sender: Responsible Organisation: Ministry of Agriculture/ Paying Agency
Direction/Unit:
Address:
Contact Person1: email:
Contact Person2: email:

Print

(*) : All the articles indicated in this Annex refer to Regulation (EC) No. 479/2008



COMMON AGRICULTURAL POLICY EUROPEAN WINE SECTOR

Destinee: European Commission DG Agriculture & Rural development Unit: AGRI-C3 Filing: V ... email: AGRI-C3@Ec.Europa.Eu fax: (00) 322 295.92.52	Wine CMO : Submission of financial table of the national support programme Council Regulation EC 479/2008
	<div style="border: 1px solid black; width: 100px; height: 20px; margin-bottom: 5px;"></div> Germany

SITUATION AU 30 juin 2013						
Measure : (*)	Financial Year:					Total (in 1000 euros)
	2009	2010	2011	2012	2013	
(1) (2)	(3)	(4)	(5)	(6)	(7)	(8)
1.Single Payment Scheme support in accordance with Article 9						
2.Promotion in accordance with Article 10	460	690	1 790	1 980	1 720	6 640
3a.Restructuring and conversion of vineyard in accordance with Article 11	12 562	14 967	14 247	18 065	11 044	70 885
3b. Ongoing Plans in accordance with Regulation EC N° 1493/1999	2 738	43				2 781
4.Green harvesting in accordance with Article 12						
5.Mutual funds in accordance with Article 13						
6.Harvest insurance in accordance with Article 14	84	1 300	1 902	1 975	1 372	6 633
7.Investments in enterprises in accordance with Article 15	3 819	13 961	14 162	17 302	24 797	74 041
8.By-product distillation in accordance with Article 16						
9.Potable alcohol distillation in accordance with Article 17						
10.Crisis distillation in accordance with Article 18						
11.Use of concentrated grape must in accordance with Article 19	3 227					3 227
Total:	22 890	30 961	32 101	39 322	38 933	164 207

If relevant:

10a.Crisis distillation Article 18(5) State Aid:	0	0	0	0	0	0
--	---	---	---	---	---	---

Sender: Responsible Organisation: Ministry of Agriculture/ Paying Agency Direction/Unit: Address: Contact Person1: email: Contact Person2: email:	<div style="border: 1px solid black; width: 100px; height: 20px; margin: 0 auto;"></div>
--	--

Print

(*) : All the articles indicated in this Annex refer to Regulation (EC) No. 479/2008

V 03.01



COMMON AGRICULTURAL POLICY
EUROPEAN WINE SECTOR



Destinee: European Commission DG Agriculture & Rural development Unit: AGRI-C3 Filing: V ... email: AGRI-C3@Ec.Europa.Eu fax: (00) 322 295.92.52	Wine CMO : Submission of financial table of the national support programme Council Regulation EC 479/2008 Article 6(e) Commission Regulation EC 555/2008 Annex IV	<div style="border: 1px solid black; height: 20px; width: 100%;"></div> Greece
---	--	---

SITUATION AU 30 juin 2013						
Measure : (*)	Financial Year:					Total (in 1000 euros)
	2009	2010	2011	2012	2013	
(1) (2)	(3)	(4)	(5)	(6)	(7)	(8)
1.Single Payment Scheme support in accordance with Article 9		13 000,	13 000,	16 000,	16 000,	58 000,
2.Promotion in accordance with Article 10	,	6 167,	4 000,	4 000,	4 000,	18 167,
3a.Restructuring and conversion of vineyard in accordance with Article 11	12 129,	,	2 840,	4 237,	3 945,	23 151,
3b. Ongoing Plans in accordance with Regulation EC N° 1493/1999	,	,	,	,	,	,
4.Green harvesting in accordance with Article 12	,	,	,	,	,	,
5.Mutual funds in accordance with Article 13	,	,	,	,	,	,
6.Harvest insurance in accordance with Article 14	,	,	,	,	,	,
7.Investments in enterprises in accordance with Article 15	,	,	,	,	,	,
8.By-product distillation in accordance with Article 16	,	,	,	,	,	,
9.Potable alcohol distillation in accordance with Article 17	,	,	,	,	,	,
10.Crisis distillation in accordance with Article 18	,	,	,	,	,	,
11.Use of concentrated grape must in accordance with Article 19	2 157,	,	,	,	,	2 157,
Total:	14 286,	19 167,	19 840,	24 237,	23 945,	101 475,

If relevant:

10a.Crisis distillation Article 18(5) State Aid:	0	0	0	0	0	0
--	---	---	---	---	---	---

Sender: Responsible Organisation: Ministry of Agriculture/ Paying Agency Direction/Unit: Address: Contact Person1: email: Contact Person2: email:	<div style="border: 1px solid black; padding: 5px; display: inline-block;">Print</div>
--	--

(*) : All the articles indicated in this Annex refer to Regulation (EC) No. 479/2008

V 03.01



COMMON AGRICULTURAL POLICY
EUROPEAN WINE SECTOR



<p>Destinee: European Commission DG Agriculture & Rural development Unit: AGRI-C3 Filing: V ... email: AGRI-C3@Ec.Europa.Eu fax: (00) 322 295.92.52</p>	<p>Wine CMO : Submission of financial table of the national support programme Council Regulation EC 479/2008 Article 6(e) Commission Regulation EC 555/2008 Annex IV</p>
Spain	

SITUATION AU 30 juin 2013						
Measure : (*) (1) (2)	Financial Year:					Total (in 1000 euros) (8)
	2009 (3)	2010 (4)	2011 (5)	2012 (6)	2013 (7)	
1.Single Payment Scheme support in accordance with Article 9		19.507	142.749	142.749	142.749	447 754
2.Promotion in accordance with Article 10	10 836	28 000	38 000	44 000	46 000	166 836
3a.Restructuring and conversion of vineyard in accordance with Article 11	20 066	59 412	54 789	136 651	131 725	402 643
3b. Ongoing Plans in accordance with Regulation EC N° 1493/1999	37 265	11 300	11 500	500	500	61 065
4.Green harvesting in accordance with Article 12						
5.Mutual funds in accordance with Article 13						
6.Harvest insurance in accordance with Article 14						
7.Investments in enterprises in accordance with Article 15				300		300
8.By-product distillation in accordance with Article 16	31 521	31 000	31 300	33 800	31 800	159 421
9.Potable alcohol distillation in accordance with Article 17	114 132	135 000	700			249 832
10.Crisis distillation in accordance with Article 18						
11.Use of concentrated grape must in accordance with Article 19						
Total:	213 820	284 219	279 038	358 000	352 774	1 487 851
If relevant:	0	0	0	0	0	0
10a.Crisis distillation Article 18(5) State Aid:	0	0	0	0	0	0

Sender: Responsible Organisation: Ministry of Agriculture/ Paying Agency

Direction/Unit:
 Address:
 Contact Person1: email:
 Contact Person2: email:

Print

(*) : All the articles indicated in this Annex refer to Regulation (EC) No. 479/2008



COMMON AGRICULTURAL POLICY
EUROPEAN WINE SECTOR



Wine CMO : Submission of financial table of the national support programme Council Regulation EC 479/2008 Article 6€ Commission Regulation EC 555/2008 Annex IV	<div style="border: 1px solid black; width: 100px; height: 20px; margin: 0 auto;"></div> France
--	--

SITUATION AU 30 juin 2013						
Measure : (*)	Financial Year:					Total (in 1000 euros)
	2009	2010	2011	2012	2013	
(1) (2)	(3)	(4)	(5)	(6)	(7)	(8)
1.Single Payment Scheme support		0	0	0	0	0
2.Promotion	23000	27000	30000	40 000	16300	136 300
3a.Restructuring and conversion of vineyard	16500	97000	112000	103 000	112300	440 800
3b. Ongoing Plans in accordance with Regulation EC N° 1493/1999	42 000	6 000	3 700	2 000	1 700	55 400
4.Green harvesting	0	0	0	0	0	0
5.Mutual funds	0	0	0	0	0	0
6.Harvest insurance	1300	200	200	0	0	1 700
7.Investments in enterprises	11500	41000	37500	80 000	120000	290 000
8.By-product distillation	35000	36000	26000	44 300	30000	171 300
9.Potable alcohol distillation in accordance with Article 17	0	0	0	0	0	0
10.Crisis distillation	26 000	7 600	3 100	0	0	36 700
11.Use of concentrated grape must in accordance with Article 19	16700	12000	11500	15 000	0	55 200
Total:	172 000	226 800	224 000	284 300	280 300	1 187 400

If relevant:

10a.Crisis distillation Article 18(5) State Aid:	0	0	0	0	0	0
--	---	---	---	---	---	---

Sender: Responsible Organisation: Ministry of Agriculture/ Paying Agency Direction/Unit: Address: Contact Person1: email: Contact Person2: email:	<div style="border: 1px solid black; width: 100px; height: 20px; margin: 0 auto;">Print</div>
--	---



COMMON AGRICULTURAL POLICY
EUROPEAN WINE SECTOR



Destinee: European Commission
 DG Agriculture & Rural development
 Unit: AGRI-C3 Filing: V ...
 email: AGRI-C3@Ec.Europa.Eu
 fax: (00) 322 295.92.52

Wine CMO : Submission of financial table
of the national support programme
 Council Regulation EC 479/2008 Article 6(e)
Commission Regulation EC 555/2008
Annex IV

Italy

SITUATION AU 30 juin 2013						
Measure : (*)	Financial Year:					Total (in 1000 euros)
	2009	2010	2011	2012	2013	
(1) (2)	(3)	(4)	(5)	(6)	(7)	(8)
1.Single Payment Scheme						
2.Promotion	6 376	25 296	49 236	66 099	85 305	232 312
3a.Restructuring and conversion of vineyard	83 292	93 827	97 472	154 183	143 578	572 352
3b. Ongoing Plans						
4.Green harvesting		18 226	26 819	8 935	1 459	55 440
5.Mutual funds						
6.Harvest insurance		30 861	24 889	20 000	20 000	95 750
7.Investments in enterprises			19 409	34 708	71 393	125 510
8.By-product distillation	18 000	23 586	20 000	21 468	15 000	98 054
9.Potable alcohol distillation i	43 635	29 320	12 914	9 638		95 507
10.Crisis distillation	27 011	12 197	8 309			47 517
11.Use of concentrated must	59 909	64 951	35 087	26 143		186 090
Total:	238 223	298 263	294 135	341 174	336 736	1 508 531

If relevant:

10a.Crisis distillation Article 18(5) State Aid:	0	0	0	0	0	0
--	---	---	---	---	---	---

Sender: Responsible Organisation: Ministry of Agriculture/ Paying Agency

Direction/Unit:

Address:

Contact Person1: email:

Contact Person2: email:

(*) : All the articles indicated in this Annex refer to Regulation (EC) No. 479/2008



COMMON AGRICULTURAL POLICY
EUROPEAN WINE SECTOR



Destinee: European Commission
DG Agriculture & Rural development
Unit: AGRI-C3 Filing: V ...
email: AGRI-C3@Ec.Europa.Eu
fax: (00) 322 295.92.52

**Wine CMO : Submission of financial table
of the national support programme**
Council Regulation EC 479/2008 Article 6(e)
Commission Regulation EC 555/2008 Annex IV

Cyprus

SITUATION AU 30 juin 2013						
Measure : (*)	Financial Year:					Total (in 1000 euros)
	2009	2010	2011	2012	2013	
(1) (2)	(3)	(4)	(5)	(6)	(7)	(8)
1.Single Payment Scheme support in accordance with Article 9						
2.Promotion in accordance with Article 10						
3a.Restructuring and conversion of vineyard in accordance with Article 11	1 851,22	1 491,46	2 473,61	3 470,64	3 636,72	12 923,65
3b. Ongoing Plans in accordance with Regulation EC N° 1493/1999						
4.Green harvesting in accordance with Article 12		256,	522,85	65,75		844,6
5.Mutual funds in accordance with Article 13						
6.Harvest insurance in accordance with Article 14		82,67	115,04	200,56	186,65	584,92
7.Investments in enterprises in accordance with Article 15	897,78	1 873,87	689,5	952,06	819,63	5 232,84
8.By-product distillation in accordance with Article 16						
9.Potable alcohol distillation in accordance with Article 17						
10.Crisis distillation in accordance with Article 18						
11.Use of concentrated grape must in accordance with Article 19						
Total:	2 749,	3 704,	3 801,	4 689,01	4 643,	19 586,01

If relevant:

10a.Crisis distillation Article 18(5) State Aid:	0	0	0	0	0	0
--	---	---	---	---	---	---

Sender: Responsible Organisation: Ministry of Agriculture/ Paying Agency
Direction/Unit:
Address:
Contact Person1: email:
Contact Person2: email:

Print

(*) : All the articles indicated in this Annex refer to Regulation (EC) No. 479/2008



COMMON AGRICULTURAL POLICY
EUROPEAN WINE SECTOR



<p>Destinee: European Commission DG Agriculture & Rural development Unit: AGRI-C3 Filing: V ... email: AGRI-C3@Ec.Europa.Eu fax: (00) 322 295.92.52</p>	<p>Wine CMO : Submission of financial table of the national support programme Council Regulation EC 479/2008 Article 6(e) Commission Regulation EC 555/2008 Annex IV</p>	<div style="border: 1px solid black; width: 100%; height: 20px; margin-bottom: 5px;"></div> <p>Lithuania</p>
--	---	---

SITUATION AU 30 juin 2013						
Measure : (*)	Financial Year:					Total (in 1000 euros)
	2009	2010	2011	2012	2013	
(1) (2)	(3)	(4)	(5)	(6)	(7)	(8)
1.Single Payment Scheme support in accordance with Article 9		0	0	0	0	0
2.Promotion in accordance with Article 10	30	37	45	45	45	202
3a.Restructuring and conversion of vineyard in accordance with Article 11	0	0	0	0	0	0
3b. Ongoing Plans in accordance with Regulation EC N° 1493/1999	0	0	0	0	0	0
4.Green harvesting in accordance with Article 12	0	0	0	0	0	0
5.Mutual funds in accordance with Article 13	0	0	0	0	0	0
6.Harvest insurance in accordance with Article 14	0	0	0	0	0	0
7.Investments in enterprises in accordance with Article 15	0	0	0	0	0	0
8.By-product distillation in accordance with Article 16	0	0	0	0	0	0
9.Potable alcohol distillation in accordance with Article 17	0	0	0	0	0	0
10.Crisis distillation in accordance with Article 18	0	0	0	0	0	0
11.Use of concentrated grape must in accordance with Article 19	0	0	0	0	0	0
Total:	30	37	45	45	45	202

If relevant:

10a.Crisis distillation Article 18(5) State Aid:	0	0	0	0	0	0
--	---	---	---	---	---	---

Sender: Responsible Organisation: Ministry of Agriculture/ Paying Agency	
Direction/Unit:	
Address:	
Contact Person1:	email:
Contact Person2:	email:

Name:
Function:
Date:
Signature:
<input type="button" value="Print"/> <input type="button" value="Send"/>

(*) : All the articles indicated in this Annex refer to Regulation (EC) No. 479/2008



COMMON AGRICULTURAL POLICY
EUROPEAN WINE SECTOR



<p>Destinee: European Commission DG Agriculture & Rural development Unit: AGRI-C3 Filing: V ... email: AGRI-C3@Ec.Europa.Eu fax: (00) 322 295.92.52</p>	<p>Wine CMO : Submission of financial table of the national support programme Council Regulation EC 479/2008 Article 6(e) Commission Regulation EC 555/2008 Annex IV</p>	<div style="border: 1px solid black; width: 100%; height: 20px; margin-bottom: 5px;"></div> <p>Luxembourg</p>
--	--	--

SITUATION AU 30 juin 2013						
Measure : (*)	Financial Year:					Total (in 1000 euros)
	2009	2010	2011	2012	2013	
(1) (2)	(3)	(4)	(5)	(6)	(7)	(8)
1.Single Payment Scheme support in accordance with Article 9		467	485	595	587	2 134
2.Promotion in accordance with Article 10	0	0	0	0	0	0
3a.Restructuring and conversion of vineyard in accordance with Article 11	114	0	0	0	0	114
3b. Ongoing Plans in accordance with Regulation EC N° 1493/1999	0	0	0	0	0	0
4.Green harvesting in accordance with Article 12	0	0	0	0	0	0
5.Mutual funds in accordance with Article 13	0	0	0	0	0	0
6.Harvest insurance in accordance with Article 14	0	0	0	0	0	0
7.Investments in enterprises in accordance with Article 15	0	0	0	0	0	0
8.By-product distillation in accordance with Article 16	0	0	0	0	0	0
9.Potable alcohol distillation in accordance with Article 17	0	0	0	0	0	0
10.Crisis distillation in accordance with Article 18	0	0	0	0	0	0
11.Use of concentrated grape must in accordance with Article 19	230	0	0	0	0	230
Total:	344	467	485	595	587	2 478

If relevant:

10a.Crisis distillation Article 18(5) State Aid:	0	0	0	0	0	0
--	---	---	---	---	---	---

Sender: Responsible Organisation: Ministry of Agriculture/ Paying Agency	
Direction/Unit:	
Address:	
Contact Person1:	email:
Contact Person2:	email:

Name:
Function:
Date:
Signature:
<input type="button" value="Print"/> <input type="button" value="Send"/>

(*) : All the articles indicated in this Annex refer to Regulation (EC) No. 479/2008



COMMON AGRICULTURAL POLICY
EUROPEAN WINE SECTOR



Destinee: European Commission
DG Agriculture & Rural development
Unit: AGRI-C3 Filing: V ...
email: AGRI-C3@Ec.Europa.Eu
fax: (00) 322 295.92.52

**Wine CMO : Submission of financial table
of the national support programme**
Council Regulation EC 479/2008 Article 6(e)
Commission Regulation EC 555/2008 Annex IV

Hungary

SITUATION AU 30 juin 2013

Measure : (*)	Financial Year:					Total (in 1000 euros)
	2009	2010	2011	2012	2013	
(1) (2)	(3)	(4)	(5)	(6)	(7)	(8)
1.Single Payment Scheme support in accordance with Article 9						
2.Promotion in accordance with Article 10						
3a.Restructuring and conversion of vineyard in accordance with Article 11	13 802,	19 110,	13 809,	22 955,	22 581,	92 257,
3b. Ongoing Plans in accordance with Regulation EC N° 1493/1999						
4.Green harvesting in accordance with Article 12						
5.Mutual funds in accordance with Article 13						
6.Harvest insurance in accordance with Article 14						
7.Investments in enterprises in accordance with Article 15			7 500,	4 000,	5 750,	17 250,
8.By-product distillation in accordance with Article 16	1 964,	1 628,	2 000,	2 000,	750,	8 342,
9.Potable alcohol distillation in accordance with Article 17	438,	1 757,				2 195,
10.Crisis distillation in accordance with Article 18						
11.Use of concentrated grape must in accordance with Article 19	612,	519,	500,	500,		2 131,
Total:	16 816,	23 014,	23 809,	29 455,	29 081,	122 175,

If relevant:

10a.Crisis distillation Article 18(5) State Aid:	0	0	0	0	0	0
--	---	---	---	---	---	---

Sender: Responsible Organisation: Ministry of Agriculture/ Paying Agency
Direction/Unit:
Address:
Contact Person1: email:
Contact Person2: email:

Print

(*) : All the articles indicated in this Annex refer to Regulation (EC) No. 479/2008



COMMON AGRICULTURAL POLICY
EUROPEAN WINE SECTOR



<p>Destinee: European Commission DG Agriculture & Rural development Unit: AGRI-C3 Filing: V ... email: AGRI-C3@Ec.Europa.Eu fax: (00) 322 295.92.52</p>	<p>Wine CMO : Submission of financial table of the national support programme Council Regulation EC 479/2008 Article 6(e) Commission Regulation EC 555/2008 Annex IV</p>	<p>Select Member State: <input type="text"/></p>
--	---	--

SITUATION AU 30 juin 2013						
Measure : (*)	Financial Year:					Total (in 1000 euros)
	2009	2010	2011	2012	2013	
(1) (2)	(3)	(4)	(5)	(6)	(7)	(8)
1.Single Payment Scheme support in accordance with Article 9		318	329	407	401	1 455
2.Promotion in accordance with Article 10	0	0	0	0	0	0
3a.Restructuring and conversion of vineyard in accordance with Article 11	0	0	0	0	0	0
3b. Ongoing Plans in accordance with Regulation EC N° 1493/1999	0	0	0	0	0	0
4.Green harvesting in accordance with Article 12	0	0	0	0	0	0
5.Mutual funds in accordance with Article 13	0	0	0	0	0	0
6.Harvest insurance in accordance with Article 14	0	0	0	0	0	0
7.Investments in enterprises in accordance with Article 15	0	0	0	0	0	0
8.By-product distillation in accordance with Article 16	0	0	0	0	0	0
9.Potable alcohol distillation in accordance with Article 17	0	0	0	0	0	0
10.Crisis distillation in accordance with Article 18	0	0	0	0	0	0
11.Use of concentrated grape must in accordance with Article 19	0	0	0	0	0	0
Total:	0	318	329	407	401	1 455

If relevant:

10a.Crisis distillation Article 18(5) State Aid:	0	0	0	0	0	0
--	---	---	---	---	---	---

Sender: Responsible Organisation: Ministry of Agriculture/ Paying Agency	
Direction/Unit:	
Address:	
Contact Person1:	email:
Contact Person2:	email:

Name:
Function:
Date:
Signature:
<input type="button" value="Print"/> <input type="button" value="Send"/>

(*) : All the articles indicated in this Annex refer to Regulation (EC) No. 479/2008



COMMON AGRICULTURAL POLICY
EUROPEAN WINE SECTOR



<p>Destinee: European Commission DG Agriculture & Rural development Unit: AGRI-C3 Filing: V ... email: AGRI-C3@Ec.Europa.Eu fax: (00) 322 295.92.52</p>	<p>Wine CMO : Submission of financial table of the national support programme Council Regulation EC 479/2008 Article 6(e) Commission Regulation EC 555/2008 Annex IV</p>	<div style="border: 1px solid black; padding: 2px; width: 100%;"> <input type="text" value="Austria"/> </div>
--	---	---

SITUATION AU 30 juin 2013						
Measure : (*)	Financial Year:					Total (in 1000 euros)
	2009	2010	2011	2012	2013	
(1) (2)	(3)	(4)	(5)	(6)	(7)	(8)
1.Single Payment Scheme support in accordance with Article 9		0	0	0	0	0
2.Promotion in accordance with Article 10	1.000	1.500	1 500	1 500	1.500	7 000
3a.Restructuring and conversion of vineyard in accordance with Article 11	1000	3000	3000	5146	1.460	13 606
3b. Ongoing Plans in accordance with Regulation EC N° 1493/1999	3.000	1.000	500	200	40	4 740
4.Green harvesting in accordance with Article 12	0	0	0	0	0	0
5.Mutual funds in accordance with Article 13	0	0	0	0	0	0
6.Harvest insurance in accordance with Article 14	0	0	0	0	0	0
7.Investments in enterprises in accordance with Article 15	3038	5388	6313	7000	10.678	32 417
8.By-product distillation in accordance with Article 16	0	0	0	0	0	0
9.Potable alcohol distillation in accordance with Article 17	0	0	0	0	0	0
10.Crisis distillation in accordance with Article 18	0	0	0	0	0	0
11.Use of concentrated grape must in accordance with Article 19	0	0	0	0	0	0
Total:	8 038	10 888	11 313	13 846	13 678	57 763

If relevant:

10a.Crisis distillation Article 18(5) State Aid:	0	0	0	0	0	0
--	---	---	---	---	---	---

Sender: Responsible Organisation: Ministry of Agriculture/ Paying Agency	
Direction/Unit:	
Address:	
Contact Person1:	email:
Contact Person2:	email:

Name:
Function:
Date:
Signature:
<input type="button" value="Print"/> <input type="button" value="Send"/>

(*) : All the articles indicated in this Annex refer to Regulation (EC) No. 479/2008



COMMON AGRICULTURAL POLICY
EUROPEAN WINE SECTOR



Destinee: European Commission
DG Agriculture & Rural development
Unit: AGRI-C3 Filing: V ...
email: AGRI-C3@Ec.Europa.Eu
fax: (00) 322 295.92.52

**Wine CMO : Submission of financial table
of the national support programme**
Council Regulation EC 479/2008 Article 6(e)
Commission Regulation EC 555/2008 Annex IV

Portugal

SITUATION AU 30 juin 2013						
Measure : (*)	Financial Year:					Total (in 1000 euros)
	2009	2010	2011	2012	2013	
(1) (2)	(3)	(4)	(5)	(6)	(7)	(8)
1.Single Payment Scheme support in accordance with Article 9		0	0	0	0	0
2.Promotion in accordance with Article 10	2.987	5.595	14.407	9.500	10800	43 289
3a.Restructuring and conversion of vineyard in accordance with Article 11	26.794	38.232	29.945	39.986	44824	179 781
3b. Ongoing Plans in accordance with Regulation EC N° 1493/1999	2.970	0	0	0	0	2 970
4.Green harvesting in accordance with Article 12	0	0	0	0	0	0
5.Mutual funds in accordance with Article 13	0	0	0	0	0	0
6.Harvest insurance in accordance with Article 14	0	0	0	9.739	5981	15 720
7.Investments in enterprises in accordance with Article 15	0	0	0	0	0	0
8.By-product distillation in accordance with Article 16	2.000	3.200	2.580	3.247	3555	14 582
9.Potable alcohol distillation in accordance with Article 17	1.149	3.400	4.288	2.138	0	10 975
10.Crisis distillation in accordance with Article 18	0	0	0	0	0	0
11.Use of concentrated grape must in accordance with Article 19	1.902	1.200	2.237	1.380	0	6 719
Total:	37 802	51 627	53 457	65 990	65 160	274 036

If relevant:

10a.Crisis distillation Article 18(5) State Aid:	0	0	0	0	0	0
--	---	---	---	---	---	---

Sender: Responsible Organisation: Ministry of Agriculture/ Paying Agency
Direction/Unit:
Address:
Contact Person1: email:
Contact Person2: email:

Print

(*) : All the articles indicated in this Annex refer to Regulation (EC) No. 479/2008

V 03.01



COMMON AGRICULTURAL POLICY
EUROPEAN WINE SECTOR



Destinee: European Commission
DG Agriculture & Rural development
Unit: AGRI-C3 Filing: V ...
email: AGRI-C3@Ec.Europa.Eu
fax: (00) 322 295.92.52

**Wine CMO : Submission of financial table
of the national support programme**
Council Regulation EC 479/2008 Article 6(e)
Commission Regulation EC 555/2008 Annex IV

Romania

SITUATION AU 30 juin 2013

Measure : (*)	Financial Year:					Total (in 1000 euros)
	2009	2010	2011	2012	2013	
(1) (2)	(3)	(4)	(5)	(6)	(7)	(8)
1.Single Payment Scheme support in accordance with Article 9						
2.Promotion in accordance with Article 10	54,4	109,48	805,9	1.158,81	1 488,59	3 617,18
3a.Restructuring and conversion of vineyard in accordance with Article 11	30 381,1	37 414,27	40 952,64	40.656,68	40 381,41	189 786,1
3b. Ongoing Plans in accordance with Regulation EC N° 1493/1999	11 311,6	4 134,31				15 445,91
4.Green harvesting in accordance with Article 12						
5.Mutual funds in accordance with Article 13						
6.Harvest insurance in accordance with Article 14	323,4	360,66	265,	228,50	230,	1 407,56
7.Investments in enterprises in accordance with Article 15						
8.By-product distillation in accordance with Article 16						
9.Potable alcohol distillation in accordance with Article 17						
10.Crisis distillation in accordance with Article 18						
11.Use of concentrated grape must in accordance with Article 19	29,5	81,28	76,5	56,01		243,29
Total:	42 100,	42 100,	42 100,04	42.100,00	42 100,	210 500,04

If relevant:

10a.Crisis distillation Article 18(5) State Aid:	0	0	0	0	0	0
--	---	---	---	---	---	---

Sender: Responsible Organisation: Ministry of Agriculture/ Paying Agency
Direction/Unit:
Address:
Contact Person1: email:
Contact Person2: email:

Print

(*) : All the articles indicated in this Annex refer to Regulation (EC) No. 479/2008



COMMON AGRICULTURAL POLICY
EUROPEAN WINE SECTOR



<p>Destinee: European Commission DG Agriculture & Rural development Unit: AGRI-C3 Filing: V ... email: AGRI-C3@Ec.Europa.Eu fax: (00) 322 295.92.52</p>	<p>Wine CMO : Submission of financial table of the national support programme Council Regulation EC 479/2008 Article 6(e) Commission Regulation EC 555/2008 Annex IV</p>	<p>Slovenia</p>
--	---	------------------------

SITUATION AU 30 juin 2013

Measure : (*)	Financial Year:					Total (in 1000 euros)
	2009	2010	2011	2012	2013	
(1) (2)	(3)	(4)	(5)	(6)	(7)	(8)
1.Single Payment Scheme support in accordance with Article 9						
2.Promotion in accordance with Article 10	544,	900,	900,	1 000,	1 100,	4 444,
3a.Restructuring and conversion of vineyard in accordance with Article 11	2 738,	2 670,	2 837,	3 919,	3 841,	16 005,
3b. Ongoing Plans in accordance with Regulation EC N° 1493/1999	,	,	,	,	,	,
4.Green harvesting in accordance with Article 12	150,	100,	100,	100,	100,	550,
5.Mutual funds in accordance with Article 13	,	,	,	,	,	,
6.Harvest insurance in accordance with Article 14	,	,	,	,	,	,
7.Investments in enterprises in accordance with Article 15	,	,	,	,	,	,
8.By-product distillation in accordance with Article 16	,	,	,	,	,	,
9.Potable alcohol distillation in accordance with Article 17	,	,	,	,	,	,
10.Crisis distillation in accordance with Article 18	,	,	,	,	,	,
11.Use of concentrated grape must in accordance with Article 19	90,	100,	100,	100,	,	390,
Total:	3 522,	3 770,	3 937,	5 119,	5 041,	21 389,

If relevant:

10a.Crisis distillation Article 18(5) State Aid:	0	0	0	0	0	0
New transfer to Rural Development	0	1 050	1 050	1 050	1 050	4 200

<p>Sender: Responsible Organisation: Ministry of Agriculture/ Paying Agency</p> <p>Direction/Unit:</p> <p>Address:</p> <p>Contact Person1: email:</p> <p>Contact Person2: email:</p>	<p><input type="button" value="Print"/></p>
---	---



COMMON AGRICULTURAL POLICY
EUROPEAN WINE SECTOR



Destinee: European Commission
DG Agriculture & Rural development
Unit: AGRI-C3 Filing: V ...
email: AGRI-C3@Ec.Europa.Eu
fax: (00) 322 295.92.52

**Wine CMO : Submission of financial table
of the national support programme**
Council Regulation EC 479/2008 Article 6(e)
Commission Regulation EC 555/2008 Annex IV

Slovakia

SITUATION AU 30 juin 2013

Measure : (*)	Financial Year:					Total (in 1000 euros)
	2009	2010	2011	2012	2013	
(1) (2)	(3)	(4)	(5)	(6)	(7)	(8)
1.Single Payment Scheme support in accordance with Article 9						
2.Promotion in accordance with Article 10				20,	50,	70,
3a.Restructuring and conversion of vineyard in accordance with Article 11		43,5	200,	300,	1 250,	1 793,5
3b. Ongoing Plans in accordance with Regulation EC N° 1493/1999	2 571,3	3 669,42	3 580,	4 007,	2 772,	16 599,72
4.Green harvesting in accordance with Article 12					0	
5.Mutual funds in accordance with Article 13					0	
6.Harvest insurance in accordance with Article 14	60,	100,	100,	200,	260,	720,
7.Investments in enterprises in accordance with Article 15		75,	280,	620,	750,	1 725,
8.By-product distillation in accordance with Article 16						
9.Potable alcohol distillation in accordance with Article 17						
10.Crisis distillation in accordance with Article 18						
11.Use of concentrated grape must in accordance with Article 19	306,7	134,08				440,78
Total:	2 938,	4 022,	4 160,	5 147,	5 082,	21 349,

If relevant:

10a.Crisis distillation Article 18(5) State Aid:	0	0	0	0	0	0
--	---	---	---	---	---	---

Sender: Responsible Organisation: Ministry of Agriculture/ Paying Agency
Direction/Unit:
Address:
Contact Person1: email:
Contact Person2: email:

Print

(*) : All the articles indicated in this Annex refer to Regulation (EC) No. 479/2008



COMMON AGRICULTURAL POLICY
EUROPEAN WINE SECTOR



<p>Destinee: European Commission DG Agriculture & Rural development Unit: AGRI-C3 Filing: V ... email: AGRI-C3@Ec.Europa.Eu fax: (00) 322 295.92.52</p>	<p>Wine CMO : Submission of financial table of the national support programme Council Regulation EC 479/2008 Article 6(e) Commission Regulation EC 555/2008 Annex IV</p>	<div style="border: 1px solid black; width: 100%; height: 20px; margin-bottom: 5px;"></div> <p>United Kingdom</p>
--	---	--

SITUATION AU 30 juin 2013

Measure : (*)	Financial Year:					Total (in 1000 euros)
	2009	2010	2011	2012	2013	
(1) (2)	(3)	(4)	(5)	(6)	(7)	(8)
1.Single Payment Scheme support in accordance with Article 9		61	67	124	120	372
2.Promotion in accordance with Article 10	0	0	0	0	0	0
3a.Restructuring and conversion of vineyard in accordance with Article 11	0	0	0	0	0	0
3b. Ongoing Plans in accordance with Regulation EC N° 1493/1999	0	0	0	0	0	0
4.Green harvesting in accordance with Article 12	0	0	0	0	0	0
5.Mutual funds in accordance with Article 13	0	0	0	0	0	0
6.Harvest insurance in accordance with Article 14	0	0	0	0	0	0
7.Investments in enterprises in accordance with Article 15	0	0	0	0	0	0
8.By-product distillation in accordance with Article 16	0	0	0	0	0	0
9.Potable alcohol distillation in accordance with Article 17	0	0	0	0	0	0
10.Crisis distillation in accordance with Article 18	0	0	0	0	0	0
11.Use of concentrated grape must in accordance with Article 19	0	0	0	0	0	0
Total:	0	61	67	124	120	372

If relevant:

10a.Crisis distillation Article 18(5) State Aid:	0	0	0	0	0	0
New transfer to Rural Development	160	160	160	160	160	800

<p>Sender: Responsible Organisation: Ministry of Agriculture/ Paying Agency</p> <p>Direction/Unit: Address: Contact Person1: email: Contact Person2: email:</p>	<p>Name: Function: Date: Signature:</p> <p style="text-align: center;"> <input type="button" value="Print"/> <input type="button" value="Send"/> </p>
---	--