



State of play of *Xylella fastidiosa* in the EU

CDG HOS – Olives Sector

Brussels, 6 November 2017

Outline

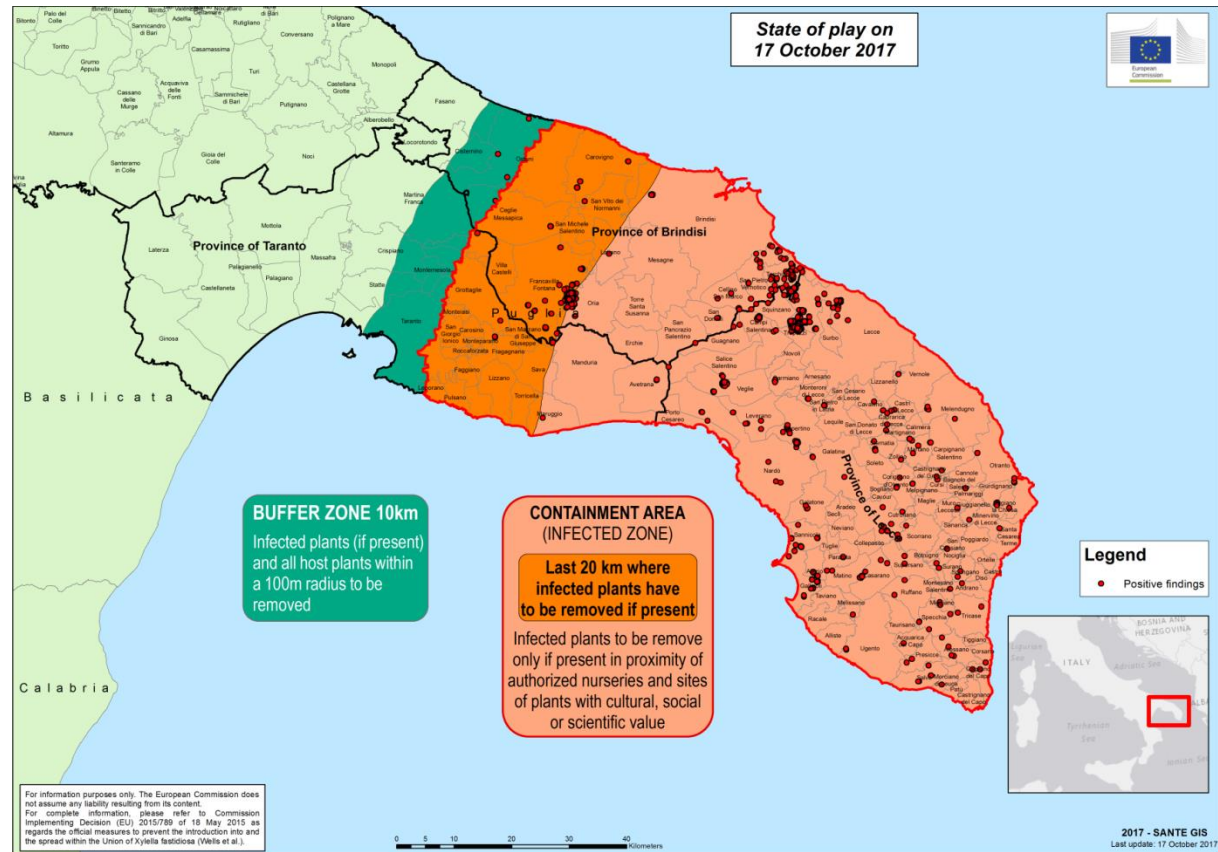
1. Situation in the Union territory

2. Latest review of Decision (EU) 2015/789

ITALY

(Apulia, containment)

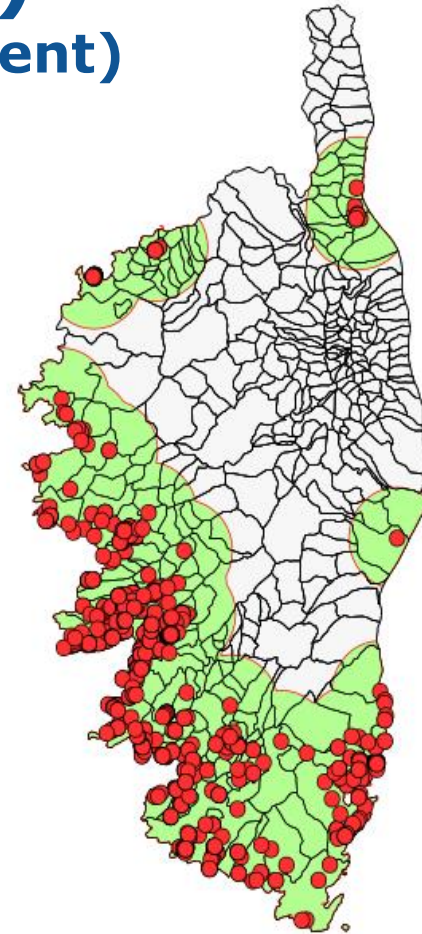
- *Xf subsp. pauca*
- Infected olive plants detected in the BZ – felling delays;
- Surveys of the last 20 km IZ ongoing;
- Movement restrictions;



FRANCE (I)

(Corsica, containment)

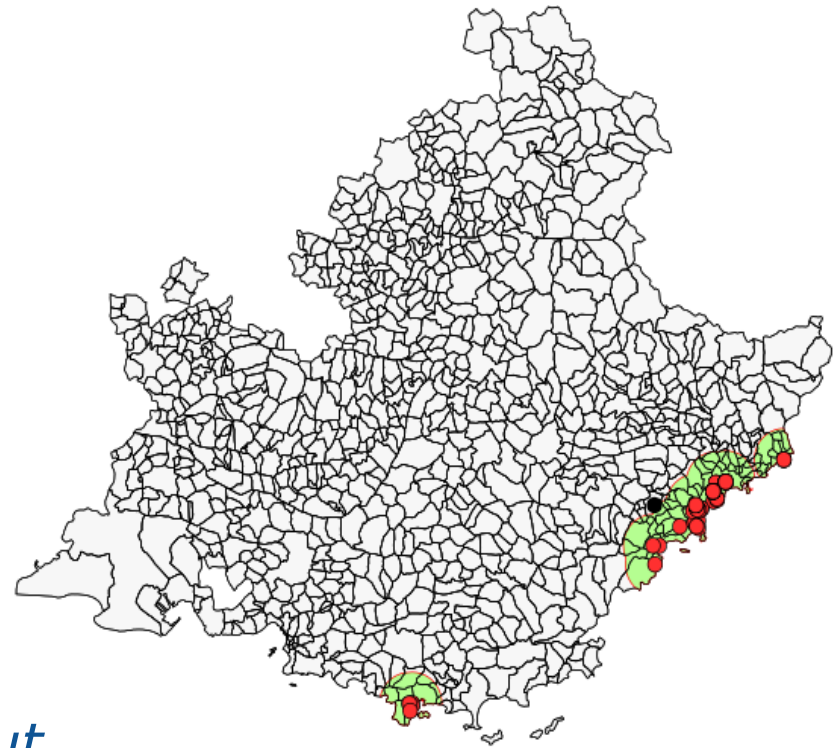
- *Xf subsp. multiplex*
- Over 340 outbreaks;
- Entire island declared as containment area;
- Movement restrictions in place;
- Mostly infected: ornamentals;



FRANCE (II)

(PACA, eradication)

- 25 outbreaks of *Xf subsp. multiplex*
- 1 outbreak of *Xf subsp. pauca* (Menton);
- Movement restrictions in place, controls to step-up;
- Mostly infected: ornamentals, but also almond, cherry and quercus suber;



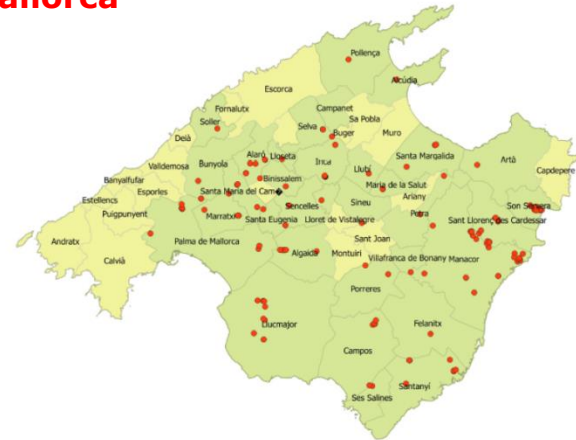
SPAIN (I)

(Balears, containment)



- *Area under containment;*
- *Xf subsp. multiplex
fastidiosa
pauca*
- *Movement restrictions in place;*

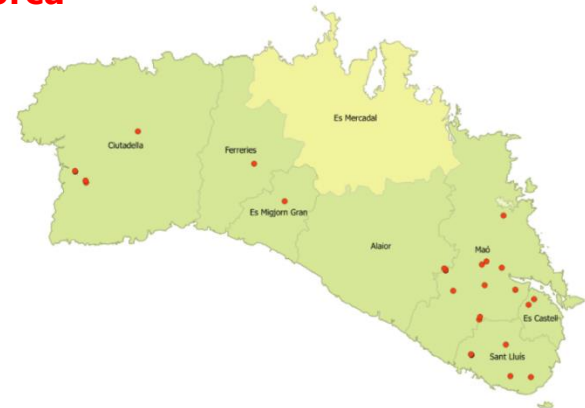
Mallorca



Ibiza-Formentera



Menorca

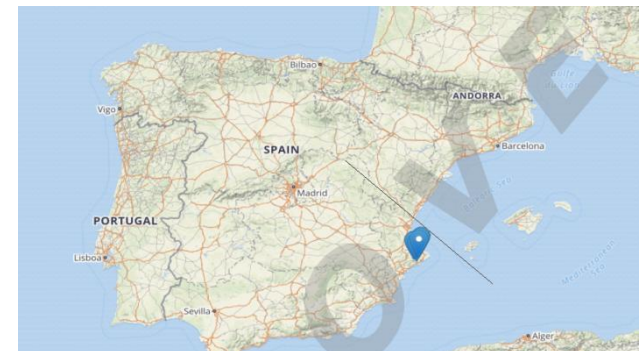


SPAIN (II)

(Valencia, eradication)



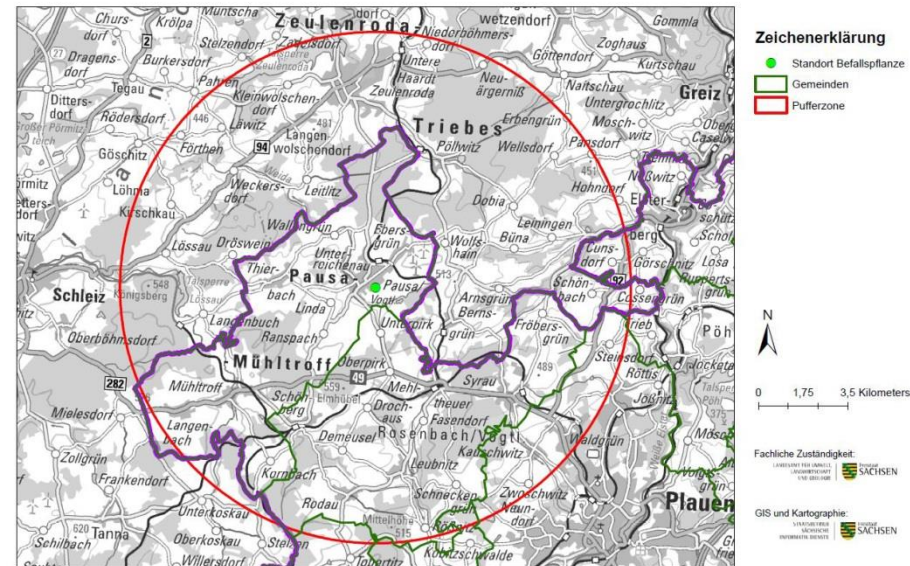
- *Xf subsp. multiplex*
- 86 almond trees found infected (28 parcels);
- Surveys ongoing;
- No infections on olive;
- Eradication measures being applied;
- Movement restrictions in place;



Germany

(Saxony, eradication)

- *Xf subsp. fastidiosa*
- 4 infected ornamental plants in a small nursery;
- Eradication measures being taken;
- Movement restrictions in place;



Latest review of Decision (EU) 2015/789

Latest revision of Decision (EU) 2015/789

- *Endorsed by PAFF on 19 October 2017; COM adoption expected soon;*

MAIN POINTS

- *Corsica and Baleares declared as **containment areas**;*
- *Harmonised **diagnostic tests** to be applied within and outside the demarcated areas;*
- *Specific control measures in case of **isolated cases** where no natural spread occurred;*
- ***Reduced buffer zone** for outbreaks subject to eradication measures;*

Latest revision of Decision (EU) 2015/789

- Possibility for MS to authorise **planting of host plants**, and preferably those varieties less susceptible to Xf, in some parts of the containment areas (e.g. Apulia, Corsica and Balears).
- **Felling exemptions** for monumental non-infected trees located in the clear cut area (100 m) subject to physical isolation;
- Revised **survey grids** applied in the buffer zones;
- De-listing of three **grapevine varieties** proven to be resistant to the Apulia strain of Xf

Latest revision of Decision (EU) 2015/789

- *Stricter requirement for internal movement of **plant species, which have been regularly found infected** in the EU, such as Coffea, Landula dentata, Nerium oleander, Olea europea, Polygala myrtifolia, Prunus dulcis when grown in areas of the EU or non-EU territory free from Xf.*

EFSA Conference on Xylella Palma de Mallorca, 13-15 Nov. 2017



European conference on
Xylella fastidiosa | 20
17



https://efsa.eventscase.com/EN/xylella_conference_2017

Further information on

[https://ec.europa.eu/food/plant/plant health bio security/legislation/emergency measures/xylella-fastidiosa en](https://ec.europa.eu/food/plant/plant_health_biosecurity/legislation/emergency_measures/xylella-fastidiosa_en)